



**HAL**  
open science

## **Acetobacter cibirongensis Bacteremia in Human**

Anne Gouby, Corinne Teyssier, Frédérique Vecina, Hélène Marchandin, Céline Granolleras, Isabelle Zorgniotti, Estelle Jumas-Bilak

► **To cite this version:**

Anne Gouby, Corinne Teyssier, Frédérique Vecina, Hélène Marchandin, Céline Granolleras, et al..  
Acetobacter cibirongensis Bacteremia in Human. 2007, pp.784-785. 10.3201/eid1305.060532 . hal-04330085

**HAL Id: hal-04330085**

**<https://hal.umontpellier.fr/hal-04330085>**

Submitted on 7 Dec 2023

**HAL** is a multi-disciplinary open access archive for the deposit and dissemination of scientific research documents, whether they are published or not. The documents may come from teaching and research institutions in France or abroad, or from public or private research centers.

L'archive ouverte pluridisciplinaire **HAL**, est destinée au dépôt et à la diffusion de documents scientifiques de niveau recherche, publiés ou non, émanant des établissements d'enseignement et de recherche français ou étrangers, des laboratoires publics ou privés.

## *Acetobacter cibinongensis* Bacteremia in Human

**To the Editor:** The genus *Acetobacter* belongs to the group of acetic acid bacteria that oxidize alcohols or sugars incompletely, leading to the accumulation of acetic acid. Acetic acid bacteria are of great industrial interest because of their use to produce vinegar from spirits, wine, beer, and cider in temperate regions of Europe, the Americas, and Japan. Several species seem to be associated with tropical climates. In Southeast Asia, *Acetobacter* spp. have been found in fermented foods such as tea fungus beverage, palm vinegar, palm wine, nata de coco, and pickles (1). *A. cibinongensis* is mainly found in tropical fruits and flowers (2). We describe a case of human infection with a member of the genus *Acetobacter*.

The patient was an HIV-seronegative, 40-year-old man who for 1 year had been receiving chronic hemodialysis for end-stage renal failure. He had a history of intravenous drug use, and continued use was suspected. In February 2005, when admitted for a routine dialysis session, he had fever (38°C) and bronchitis and was receiving empiric treatment with amoxicillin (2 g/day). His respiratory status improved slightly, but fever persisted after 48 hours. On his right forearm, he had a large inflammatory skin lesion that followed the course of an arteriovenous fistula, suggestive of staphylococcal infection. Treatment was switched to pristinamycin (2 g/day for 4 days). The patient's leukocyte count was within normal limits, but his C-reactive protein level was elevated (50 mg/L). Two blood samples were drawn, 1 through a subclavian catheter implanted in 2004 and the other through the arteriovenous fistula. After 4 days, a gram-variable polymorphic rod, named nîmes373,

grew from both aerobic culture vials and yielded very small polymorphic colonies on Columbia sheep blood and blood-chocolate agar plates (Bio-Rad, Marnes-la-Coquette, France). Enhanced growth was observed on *Legionella* agar (AES Chemunex, Bruz, France) and on R2A agar plates (BD-BBL, Le Pont de Claix, France). Biotyping of this catalase-positive, oxidase-negative rod with API 20NE and API 20E strips (bioMérieux, Marcy l'Étoile, France) and with the ID-GNB card system on a VITEK 2 apparatus (bioMérieux) did not identify the bacterium. Positive reactions were obtained for acetoin production and citrate assimilation. Antimicrobial drug-susceptibility pattern could not be validated owing to the lack of interassay reproducibility. Pristinamycin was replaced by broad-spectrum antimicrobial therapy consisting of cefazolin (1 g every 48 hours) and tobramycin (225 mg after each hemodialysis session). After 3 courses of this regimen, treatment was changed to amoxicillin (2 g/day, plus 1 g after each dialysis session) for 4 weeks. The local inflammation and fever subsided, the C-reactive protein level returned to normal, and the patient's clinical status improved with no recurrence of infection.

A 1389-bp 16S rDNA sequence was obtained for strain nîmes373, as described (3). The sequence matched those of *A. cibinongensis* deposited in the GenBank database (>99.6% identity). The 16S rDNA-based phylogeny confirmed the affiliation of strain nîmes373 to the species *A. cibinongensis* in the family *Acetobacteraceae* (Figure). The growth of nîmes373 on 0.7% calcium carbonate agar plates with 7% ethanol (pH 3.5) cleared calcium carbonate. This indicated tolerance of the isolate to acidic conditions and ability to produce organic acids from alcohol, thereby proving its affiliation to the acetic acid bacteria group.

Currently, 6 genera of acetic acid bacteria are recognized in the Al-

pha Proteobacteria lineage (Figure). Only the main genera (*Acetobacter*, *Gluconacetobacter*, *Gluconobacter*) are discriminated by analytic methods, such as high-performance liquid chromatography, which are not used in routine microbiology (4). The tree showed that 16S rDNA sequencing was effective for genus and species identification of acetic acid bacteria (Figure). This method is also rapid and convenient for use in a medical microbiology laboratory.

Bacteria have been used in food processing and have thus been ingested, live or dead, throughout human history. The safety of lactic and acetic acid bacteria has been confirmed over the years (5). However, in recent years, lactic acid bacteria belonging to the genera *Lactobacillus*, *Leuconostoc*, *Pediococcus*, or *Bifidobacterium* have been isolated from a variety of clinical samples, generally from patients with diabetes, cancer, or immunosuppression (6). As lactic acid bacteria are part of the normal human flora, their clinical relevance is often difficult to establish. In contrast, acetic acid bacteria have never been isolated from human flora; recently, the pathogenicity of an unknown bacterium that probably belonged to acetic acid bacteria, *Granulobacter bethesdensis*, was found in a patient with lymphadenitis (7).

Our patient denied travel outside France and had no exotic dietary habits. He was probably infected by direct inoculation, possible during intravenous drug injection or after unnoticed injury when he worked in vineyards. For hemodialysis patients, vascular access infections are a major cause of illness and death (8). Also for these patients, unusual bacteria with low inherent pathogenicity are increasingly reported as potential causes of bacteremia (9). The decreased phagocytic activity of neutrophils and monocytes associated with chronic renal failure may increase susceptibility to bacteria that would otherwise have low patho-

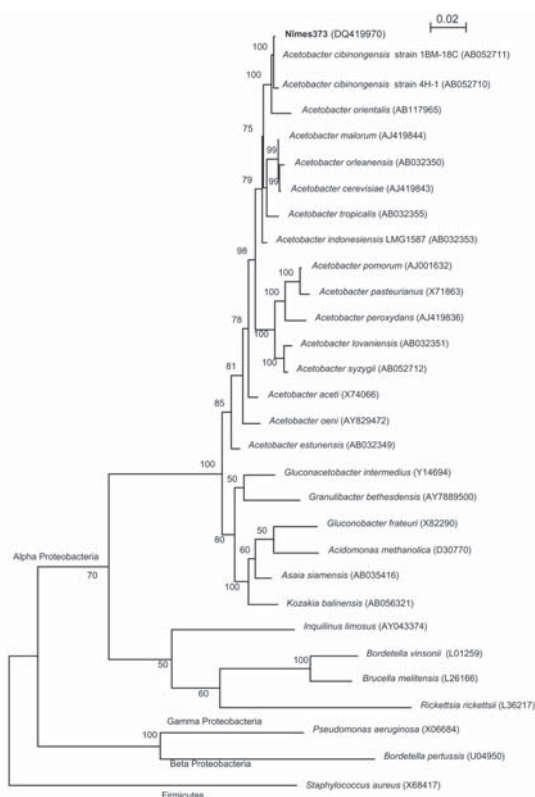


Figure. 16S rDNA maximum-likelihood phylogenetic tree showing the relationships of the isolate nîmes373 with 15 species of the genus *Acetobacter* and 6 strains representative of the 6 other genera of acetic acid bacteria in the Alpha Proteobacteria. Sequences of Alpha, Beta, and Gamma Proteobacteria of clinical relevance were also included in the tree. *Staphylococcus aureus* (Firmicutes) 16S rDNA was used as an outgroup. The 16S rDNA sequences used to reconstruct this tree were obtained from the GenBank database, and their accession numbers are indicated in brackets. The tree was reconstructed using DNAML from the PHYLIP package v. 3.6.6, on the basis of the F84 (+ gamma distribution + invariant sites) substitution model. The scale bar indicates 0.02 substitutions per nucleotide position. Numbers given at the nodes represent bootstrap percentages calculated on 100 replicates.

genicity (10). This second known report of human infection with acetic acid bacteria should alert clinicians to the risk for opportunistic infections with these bacteria, which are broadly used in food processing.

**Anne Gouby,\* Corinne Teyssier,† Frédérique Vecina,\* Hélène Marchandin,‡ Céline Granolleras,\* Isabelle Zorogniotti,† and Estelle Jumas-Bilak†**

\*Hôpital Carémeau, Nîmes, France; †Université Montpellier 1, Montpellier, France; and ‡Hôpital Arnaud de Villeneuve, Montpellier, France

## References

1. Yamada Y, Hosono R, Lisdiyanti P, Widyastuti Y, Saono S, Uchimura T, et al. Identification of acetic acid bacteria isolated from Indonesian sources, especially of isolates classified in the genus *Gluconobacter*. *J Gen Appl Microbiol*. 1999;45:23–8.
2. Lisdiyanti P, Kawasaki H, Seki T, Yamada Y, Uchimura T, Komagata K. Identification of *Acetobacter* strains isolated from Indonesian sources, and proposals of *Acetobacter syzygii* sp. nov., *Acetobacter cibinongensis* sp. nov., and *Acetobacter orientalis* sp. nov. *J Gen Appl Microbiol*. 2001;47:119–31.
3. Teyssier C, Marchandin H, Jean-Pierre H, Diego I, Darbas H, Jeannot JL, et al. Molecular and phenotypic features for identification of the opportunistic pathogens *Ochrobactrum* spp. *J Med Microbiol*. 2005;54:945–53.
4. Swings J. The genera *Acetobacter* and *Gluconobacter*. In: Balows A, Trüper HG, Dworkin M, Harder W, Schleifer KH, editors. *The prokaryotes*, 2nd ed. New York: Springer-Verlag; 1992. p. 2268–86.
5. Pasteur L. Mémoire sur la fermentation acétique. *Annales Scientifiques de l'École Normale Supérieure Paris*. 1864;1:113–58.
6. Ishibashi N, Yamazaki S. Probiotics and safety. *Am J Clin Nutr*. 2001;73:465S–70S.
7. Greenberg DE, Ding L, Zelazny AM, Stock F, Wong A, Anderson VL, et al. A novel bacterium associated with lymphadenitis in a patient with chronic granulomatous disease. *PLoS Pathog*. 2006;2:260–7.
8. Blankstijn PJ. Treatment and prevention of catheter-related infections in haemodialysis. *Nephrol Dial Transplant*. 2001;16:1975–8.
9. Daxboeck F, Zitta S, Assadian O, Krause R, Wenisch C, Kovarik J. *Ochrobactrum anthropi* bloodstream infection complicating hemodialysis. *Am J Kidney Dis*. 2002;40:E17.
10. Muniz-Junqueira MI, Braga Lopes C, Magalhaes CA, Schleicher CC, Veiga JP. Acute and chronic influence of hemodialysis according to the membrane used on phagocytic function of neutrophils and monocytes and pro-inflammatory cytokines production in chronic renal failure patients. *Life Sci*. 2005;77:3141–55.

Address for correspondence: Estelle Jumas-Bilak, Université Montpellier 1, Laboratoire de Bactériologie, EA 3755, Faculté de Pharmacie, 15 avenue Charles Flahault, BP 14491, 34093 Montpellier CEDEX 5, France; email: ebilak@univ-montp1.fr

## Risk for Epidemics after Natural Disasters

**To the Editor:** Myths that disaster-affected populations are at high risk for outbreaks and that dead bodies contribute to this risk are common (1). Conversely, some experts deny high, short-term risk after disasters (2).

We agree with Watson et al. (3) that the risk for communicable diseases