



HAL
open science

β -Synuclein as a candidate blood biomarker for synaptic degeneration in Alzheimer's disease

Pablo Mohaupt, Marie-Laure Pons, Jérôme Vialaret, Constance Delaby,
Christophe Hirtz, Sylvain Lehmann

► To cite this version:

Pablo Mohaupt, Marie-Laure Pons, Jérôme Vialaret, Constance Delaby, Christophe Hirtz, et al.. β -Synuclein as a candidate blood biomarker for synaptic degeneration in Alzheimer's disease. *Alzheimer's Research and Therapy*, 2022, 14 (1), pp.179. 10.1186/s13195-022-01125-1 . hal-04258435

HAL Id: hal-04258435

<https://hal.umontpellier.fr/hal-04258435>

Submitted on 30 Oct 2023

HAL is a multi-disciplinary open access archive for the deposit and dissemination of scientific research documents, whether they are published or not. The documents may come from teaching and research institutions in France or abroad, or from public or private research centers.

L'archive ouverte pluridisciplinaire **HAL**, est destinée au dépôt et à la diffusion de documents scientifiques de niveau recherche, publiés ou non, émanant des établissements d'enseignement et de recherche français ou étrangers, des laboratoires publics ou privés.

MINI REVIEW

Open Access



β -Synuclein as a candidate blood biomarker for synaptic degeneration in Alzheimer's disease

Pablo Mohaupt¹, Marie-Laure Pons¹, Jérôme Vialaret¹, Constance Delaby^{1,2}, Christophe Hirtz^{1*} and Sylvain Lehmann¹

Abstract

Synaptic degeneration is an early event closely associated with the course of Alzheimer's disease (AD). The identification of synaptic blood biomarkers is, therefore, of great interest and clinical relevance. The levels of most synaptic proteins are increased in the cerebrospinal fluid (CSF) of patients with AD, but their detection in blood is hitherto either unavailable or not very informative. This paradigm is related to their low concentration, their peripheral origin, or the presence of highly abundant blood proteins that hinder detection. In recent years, significant progress has been made in detecting the presynaptic protein β -synuclein. This mini-review summarizes the results that highlight the role of β -synuclein as a candidate blood marker for synaptic degeneration in AD.

Keywords: β -Synuclein, Alzheimer's disease, Blood biomarker, Synaptic dysfunction

Background

The etiology of Alzheimer's disease (AD) remains controversial, despite recent developments in genetics and cell biology. AD is characterized by neuronal loss, extracellular amyloid- β plaques, and neurofibrillary tangles consisting of strings of hyperphosphorylated tau located within neurons [1]. Until recently, only therapies were available to treat the symptoms of AD, and clinical trials building on the amyloid cascade theorem struggled to halt or delay disease progression [2, 3]. Anti-tau antibodies have so far been unsuccessful, whereas the anti-amyloid-beta antibody aducanumab was approved by the Food and Drug Administration (FDA). This treatment is supposed to target the underlying disease process of AD, while its effectiveness is moderate but controversial [4]. Thus, there is still a need for more effective or targeted approaches and to unravel the pathophysiological subtypes of AD [5]. As treatments become available, there is

also a clinical need for biomarkers that detect AD in its earliest stages and predict and monitor disease progression [6]. Synaptic degeneration is the neuropathological hallmark most highly correlated with cognitive impairment in AD; hence, the interest in synaptic biomarkers that may complement the amyloid and tau panels already in use (Fig. 1) [7]. Synaptic degeneration in AD can already be determined by quantifying post- and pre-synaptic proteins in CSF and by measuring the levels of SV2A with positron emission tomography (PET) [8, 9]. The measurement of brain-specific synaptic proteins in blood is currently not available but can be of great relevance for clinical trials, disease monitoring, and early diagnosis. Here, we summarize recent findings and outline the rationale that the presynaptic protein β -synuclein is an early and prognostic blood marker for AD.

β -Synuclein in Alzheimer's disease

β -Synuclein is a presynaptic protein encoded by the synuclein Beta locus (SNCB) and is predominantly expressed in the brain. β -Synuclein forms, together with α -synuclein and γ -synuclein, a group of proteins dubbed "Synucleins" and is shown to inhibit α -synuclein

*Correspondence: christophe.hirtz@umontpellier.fr

¹ LBPC-PPC, Université de Montpellier, IRMB CHU de Montpellier, INM INSERM, Montpellier, France

Full list of author information is available at the end of the article



© The Author(s) 2022. **Open Access** This article is licensed under a Creative Commons Attribution 4.0 International License, which permits use, sharing, adaptation, distribution and reproduction in any medium or format, as long as you give appropriate credit to the original author(s) and the source, provide a link to the Creative Commons licence, and indicate if changes were made. The images or other third party material in this article are included in the article's Creative Commons licence, unless indicated otherwise in a credit line to the material. If material is not included in the article's Creative Commons licence and your intended use is not permitted by statutory regulation or exceeds the permitted use, you will need to obtain permission directly from the copyright holder. To view a copy of this licence, visit <http://creativecommons.org/licenses/by/4.0/>. The Creative Commons Public Domain Dedication waiver (<http://creativecommons.org/publicdomain/zero/1.0/>) applies to the data made available in this article, unless otherwise stated in a credit line to the data.

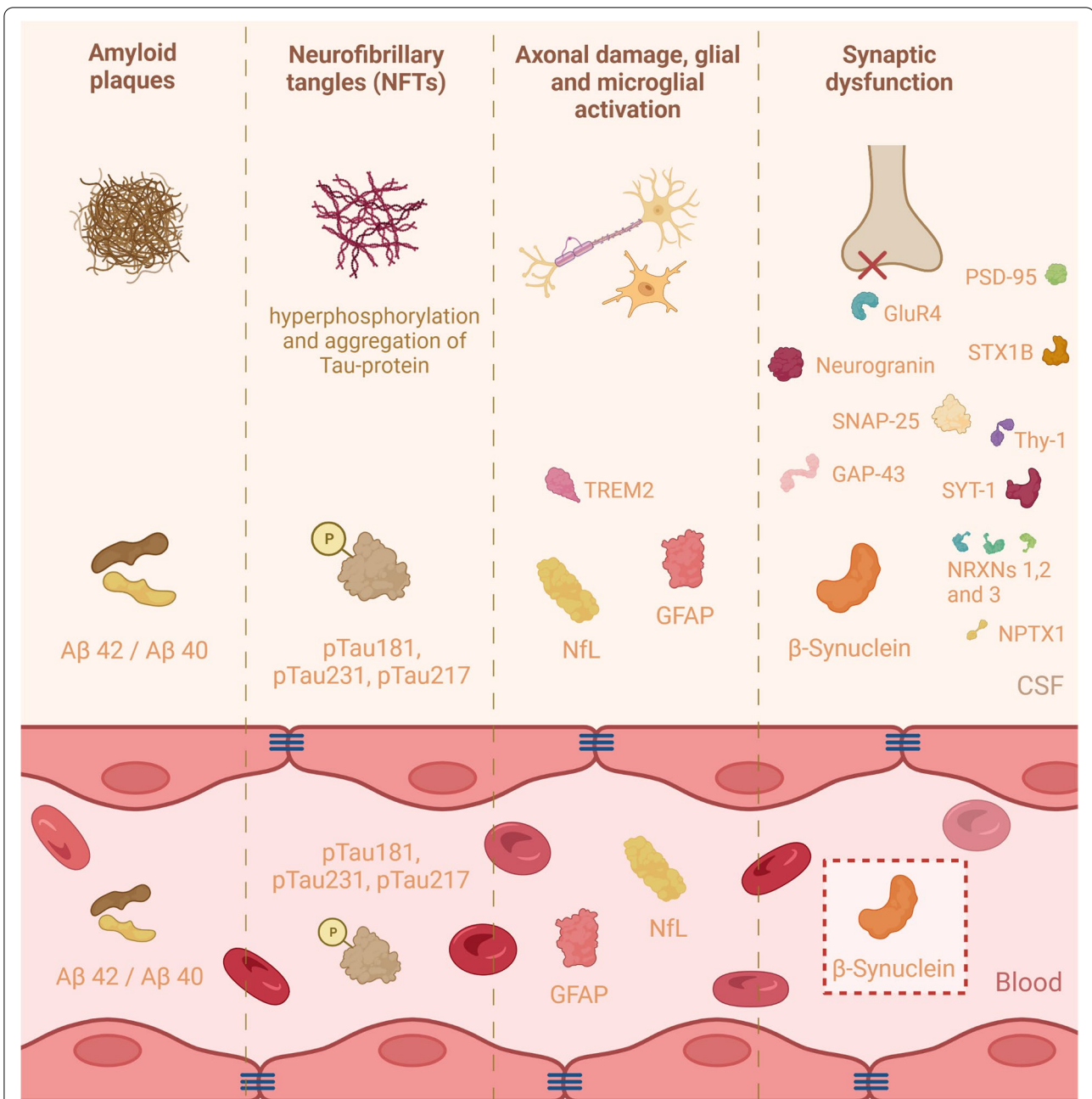


Fig. 1 Pathophysiological hallmarks of Alzheimer's disease and its associated biomarkers in either blood or cerebrospinal fluid. Alzheimer's disease is characterized by amyloid plaques, neurofibrillary tangles, axonal damage, microglial activation, and synaptic dysfunction. These pathophysiological hallmarks are responsible for significant modification of CSF Amyloid- β 42/40 ratio, levels of tau with abnormal phosphorylation at positions 181, 231, and 217, neurofilament light chain (NfL), and glial fibrillary acidic protein (GFAP) levels. These variations are also detected in the blood of AD patients. The levels of numerous proteins involved in synaptic function vary in CSF in (preclinical) AD. Proteins originating from the central nervous system are often present in low concentrations that are difficult to detect. A fraction of synaptic proteins is also expressed in other tissues and are therefore not suitable as specific blood biomarkers for synaptic dysfunction. To date, β -synuclein, whose expression is brain-specific, is the only synaptic protein that is determined to be significantly increased in the blood of AD patients

aggregation [10]. α -Synuclein is extensively researched to assess its biomarker potential in synucleinopathies such as Parkinson's disease (PD), dementia with Lewy bodies

(DLB), and multiple system atrophy (MSA), which are characterized by abnormal accumulation of α -synuclein aggregates [11]. As such, the presence of elevated

β -synuclein in the CSF of AD patients was first detected serendipitously in an endeavor to identify abnormalities specific to a particular synucleinopathy [12]. A significant increase with a high correlation with CSF tau was observed in AD and Creutzfeldt-Jakob disease (CJD). Of note, β -synuclein was slightly higher in dementia with DLB and PD-related dementia compared with controls and PD without dementia, suggesting that β -synuclein may be more associated with cognitive impairment than with motor impairment. The increase of β -synuclein in AD CSF was also observed in a study targeting synaptic proteins with mass spectrometry and was confirmed in an immunodetection study [13, 14]. The latter suggests that β -synuclein is altered more specifically in amyloidopathies, as no changes were observed in non-amyloid pathologies such as frontotemporal dementia (FTD). Furthermore, the increase was already present in prodromal patients with mild cognitive impairment (MCI-AD), highlighting its potential as an early diagnostic and prognostic biomarker candidate. The AD-specific increase was also observed in a study researching synaptic dysfunction in different neurodegenerative diseases [15]. A major step in assessing the value of β -synuclein as a biomarker for AD was the development of an immunoprecipitation mass spectrometry (IP-MS) method that can be applied in both CSF and blood [16]. This novel assay confirmed the previous results obtained in CSF and, in particular, showed that the levels of β -synuclein were also significantly higher in the blood of AD patients. This study positioned β -synuclein as the first synaptic blood biomarker for AD. The increase in MCI-AD was more moderate and did not reach significance, but this is likely due to the small cohort size. The increase was also confirmed in a study in adults with Down syndrome (DS), who are at high risk of developing AD due to overexpression of the APP gene located on chromosome 21 [17]. Of particular note, β -synuclein was already altered in pre-clinical AD and was elevated earlier than pTau181, confirming its early diagnostic and prognostic interest. More recently, blood β -synuclein levels were found to correlate with cognitive impairment and brain atrophy in AD, which indicates its association with disease severity [18].

The IP-MS analytical approach is innovative but requires large blood sample volumes and has low turnover, hindering the analysis of large cohorts and routine use. Recently, an ultrasensitive immunodetection assay with Simoa was developed to target β -synuclein in blood [19]. So far, this test has been applied to CJD and it has yet to be determined if this assay can match the clinical performance of IP-MS in AD-related cohorts.

There is no comparison of blood β -synuclein with other synaptic markers such as SNAP-25, SYT-1, neuronal pentraxins (NPTXs), or neurogranin (Ng). Indeed,

the presynaptic SYT-1 and SNAP-25, the postsynaptic Ng, and NPTXs which are present in both pre- and post-synapses all show altered levels in CSF [20–23]. Nonetheless, most synaptic proteins are not yet assayable in the blood, even with ultrasensitive methods as tested recently for SNAP-25 [24]. Ng can be detected in blood, but its expression is not restricted to the brain; therefore, the changes observed in CSF are not specifically reflected in the blood [9].

The combined results outlined in this mini-review show that β -synuclein could potentially complement the panel of blood biomarkers for AD as a marker for synaptic degeneration, whereas phosphorylated tau biomarkers reflect amyloidopathy and tau-pathology.

Conclusion

In conclusion, β -synuclein is to date the only detectable blood biomarker for synaptic degeneration in AD. The switch from mass spectrometry to an immunodetection method increases the accessibility of β -synuclein quantification in larger research cohorts. Its value as a marker for AD will have to be tested in cohorts and compared with blood markers such as pTau217 and pTau231, whose performances remain unmatched to date [25].

Abbreviations

A β 40: Amyloid- β 40; A β 42: Amyloid- β 42; AD: Alzheimer's disease; CJD: Creutzfeldt-Jakob disease; CSF: Cerebrospinal fluid; DS: Down syndrome; FDA: Food and Drug Administration; GAP-43: Axonal membrane protein GAP-43; GFAP: Glial fibrillary acidic protein; GluR4: Glutamate receptor 4; IP-MS: Immunoprecipitation followed by mass spectrometry; MCI-AD: Mild cognitive impairment due to AD; NfL: Neurofilament light chain; Ng: Neurogranin; NPTX1: Neuronal pentraxin-1; NPTXs: Neuronal pentraxins; NRXN: Neurexin; PD: Parkinson's disease; PET: Positron emission tomography; PSD-95: Postsynaptic density protein 95; pTau181: Tau with phosphorylation at positions 181; pTau217: Tau with phosphorylation at positions 217; pTau231: Tau with phosphorylation at positions 231; SNAP-25: Synaptosomal-associated protein 25; SNCB: Synuclein Beta locus; SV2A: Synaptic vesicle glycoprotein 2A; STX1B: Syntaxin-1B; SYT-1: Synaptotagmin-1; Thy-1: Thy-1 membrane glycoprotein; TREM2: Triggering receptor expressed on myeloid cells 2.

Acknowledgements

Not applicable.

Authors' contributions

P.M. and S.L. conceptually designed the work. P.M., M.P., J.V., C.D., and S.L. wrote the manuscript. P.M. made the illustration. C.H. and S.L. reviewed the manuscript. All authors read, approved and commented on the manuscript.

Funding

This project has received funding (support for PM and the laboratory) from the European Union's Horizon 2020 research and innovation program under the Marie Skłodowska-Curie grant agreement No 860197 MIRIADE.

Availability of data and materials

Not applicable.

Declarations

Ethics approval and consent to participate

Not applicable.

Consent for publication

The figure is original, created with [BioRender.com](https://www.biorender.com).

Competing interests

The authors declare no competing interests.

Author details

¹LBPC-PPC, Université de Montpellier, IRMB CHU de Montpellier, INM INSERM, Montpellier, France. ²Sant Pau Memory Unit, Hospital de la Santa Creu i Sant Pau - Biomedical Research Institute Sant Pau - Universitat Autònoma de Barcelona, Barcelona, Spain.

Received: 6 September 2022 Accepted: 17 November 2022

Published online: 30 November 2022

References

- Hardy JA, Higgins GA. Alzheimer's disease: the amyloid cascade hypothesis. *Science*. 1992;256:184–5.
- Huang L-K, Chao S-P, Hu C-J. Clinical trials of new drugs for Alzheimer disease. *J Biomed Sci*. 2020;27:18.
- Mangialasche F, Solomon A, Winblad B, Mecocci P, Kivipelto M. Alzheimer's disease: clinical trials and drug development. *Lancet Neurol*. 2010;9:702–16.
- Kuller LH, Lopez OL. ENGAGE and EMERGE: truth and consequences? *Alzheimers Dement*. 2021;17:692–5.
- Tijms BM, Gobom J, Reus L, Jansen I, Hong S, Dobricic V, et al. Pathophysiological subtypes of Alzheimer's disease based on cerebrospinal fluid proteomics. *Brain*. 2020;143:3776–92.
- Mavrina E, Kimble L, Waury K, Gogishvili D, de San G, José N, et al. Multi-omics interdisciplinary research integration to accelerate dementia biomarker development (MIRIADE). *Front Neurol*. 2022;13:890638
- Terry RD, Masliah E, Salmon DP, Butters N, DeTeresa R, Hill R, et al. Physical basis of cognitive alterations in Alzheimer's disease: synapse loss is the major correlate of cognitive impairment. *Ann Neurol*. 1991;30:572–80.
- Chen M-K, Mecca AP, Naganawa M, Finnema SJ, Toyonaga T, Lin S-F, et al. Assessing synaptic density in Alzheimer disease with synaptic vesicle glycoprotein 2A positron emission tomographic imaging. *JAMA Neurol*. 2018;75:1215–24.
- Kvartsberg H, Portelius E, Andreasson U, Brinkmalm G, Hellwig K, Lehtala N, et al. Characterization of the postsynaptic protein neurogranin in paired cerebrospinal fluid and plasma samples from Alzheimer's disease patients and healthy controls. *Alzheimers Res Ther*. 2015;7:40.
- Hashimoto M, Rockenstein E, Mante M, Mallory M, Masliah E. β -Synuclein inhibits α -synuclein aggregation: a possible role as an anti-parkinsonian factor. *Neuron*. 2001;32:213–23.
- Pons M-L, Loftus N, Vialaret J, Moreau S, Lehmann S, Hirtz C. Proteomics challenges for the assessment of synuclein proteoforms as clinical biomarkers in Parkinson's disease. *Front Aging Neurosci*. 2022;14:818606.
- Oeckl P, Metzger F, Nagl M, von Arnim CAF, Halbgebauer S, Steinacker P, et al. Alpha-, beta-, and gamma-synuclein quantification in cerebrospinal fluid by multiple reaction monitoring reveals increased concentrations in Alzheimer's and Creutzfeldt-Jakob disease but no alteration in synucleinopathies. *Mol Cell Proteomics*. 2016;15:3126–38.
- Halbgebauer S, Oeckl P, Steinacker P, Yilmazer-Hanke D, Anderl-Straub S, von Arnim C, et al. Beta-synuclein in cerebrospinal fluid as an early diagnostic marker of Alzheimer's disease. *J Neurol Neurosurg Psychiatry*. 2021;92:349–56.
- Nilsson J, Gobom J, Sjödin S, Brinkmalm G, Ashton NJ, Svensson J, et al. Cerebrospinal fluid biomarker panel for synaptic dysfunction in Alzheimer's disease. *Alzheimers Dementia*. 2021;13:e12179.
- Nilsson J, Cousins KAQ, Gobom J, Portelius E, Chen-Plotkin A, Shaw LM, et al. Cerebrospinal fluid biomarker panel of synaptic dysfunction in Alzheimer's disease and other neurodegenerative disorders. *Alzheimers Dement*. 2022;1–10.
- Oeckl P, Halbgebauer S, Anderl-Straub S, von Arnim CAF, Diehl-Schmid J, Froelich L, et al. Targeted mass spectrometry suggests beta-synuclein as synaptic blood marker in Alzheimer's disease. *J Proteome Res*. 2020;19:1310–8.
- Oeckl P, Wagemann O, Halbgebauer S, Anderl-Straub S, Nuebling G, Prix C, et al. Serum beta-synuclein is higher in Down syndrome and precedes rise of pTau181. *Ann Neurol*. 2022;92:6–10.
- Oeckl P, Anderl-Straub S, Danek A, Diehl-Schmid J, Fassbender K, Fliessbach K, et al. Relationship of serum beta-synuclein with blood biomarkers and brain atrophy. *Alzheimers Dementia*. 2022;1–14.
- Halbgebauer S, Abu-Rumeileh S, Oeckl P, Steinacker P, Roselli F, Wiesner D, et al. Blood β -synuclein and neurofilament light chain during the course of prion disease. *Neurology*. 2022;98:e1434–45.
- Brinkmalm A, Brinkmalm G, Honer WG, Frölich L, Hausner L, Minthon L, et al. SNAP-25 is a promising novel cerebrospinal fluid biomarker for synapse degeneration in Alzheimer's disease. *Mol Neurodegener*. 2014;9:53.
- Öhrfelt A, Brinkmalm A, Dumurgier J, Brinkmalm G, Hansson O, Zetterberg H, et al. The pre-synaptic vesicle protein synaptotagmin is a novel biomarker for Alzheimer's disease. *Alzheimers Res Ther*. 2016;8:41.
- Mavroudis IA, Petridis F, Chatzikonstantinou S, Kazis D. A meta-analysis on CSF neurogranin levels for the diagnosis of Alzheimer's disease and mild cognitive impairment. *Aging Clin Exp Res*. 2020;32:1639–46.
- de San G, José N, Massa F, Halbgebauer S, Oeckl P, Steinacker P, et al. Neuronal pentraxins as biomarkers of synaptic activity: from physiological functions to pathological changes in neurodegeneration. *J Neural Transm*. 2022;129:207–30.
- Nilsson J, Ashton NJ, Benedet AL, Montoliu-Gaya L, Gobom J, Pascoal TA, et al. Quantification of SNAP-25 with mass spectrometry and Simoa: a method comparison in Alzheimer's disease. *Alzheimers Res Ther*. 2022;14:78.
- Milà-Alomà M, Ashton NJ, Shekari M, Salvadó G, Ortiz-Romero P, Montoliu-Gaya L, et al. Plasma p-tau231 and p-tau217 as state markers of amyloid- β pathology in preclinical Alzheimer's disease. *Nat Med*. 2022;28(9):1797–801.

Publisher's Note

Springer Nature remains neutral with regard to jurisdictional claims in published maps and institutional affiliations.

Ready to submit your research? Choose BMC and benefit from:

- fast, convenient online submission
- thorough peer review by experienced researchers in your field
- rapid publication on acceptance
- support for research data, including large and complex data types
- gold Open Access which fosters wider collaboration and increased citations
- maximum visibility for your research: over 100M website views per year

At BMC, research is always in progress.

Learn more biomedcentral.com/submissions

