



**HAL**  
open science

# A prospective, randomized, phase II study to assess the schemas of retreatment with Lutathera® in patients with new progression of an intestinal, well-differentiated neuroendocrine tumor (ReLUTH)

Emmanuel Deshayes, Eric Assenat, Laetitia Meignant, Manuel Bardiès, Lore Santoro, Sophie Gourgou

## ► To cite this version:

Emmanuel Deshayes, Eric Assenat, Laetitia Meignant, Manuel Bardiès, Lore Santoro, et al.. A prospective, randomized, phase II study to assess the schemas of retreatment with Lutathera® in patients with new progression of an intestinal, well-differentiated neuroendocrine tumor (ReLUTH). BMC Cancer, 2022, 22 (1), pp.1346. 10.1186/s12885-022-10443-4 . hal-04238912

**HAL Id: hal-04238912**

**<https://hal.umontpellier.fr/hal-04238912>**

Submitted on 15 Nov 2023

**HAL** is a multi-disciplinary open access archive for the deposit and dissemination of scientific research documents, whether they are published or not. The documents may come from teaching and research institutions in France or abroad, or from public or private research centers.

L'archive ouverte pluridisciplinaire **HAL**, est destinée au dépôt et à la diffusion de documents scientifiques de niveau recherche, publiés ou non, émanant des établissements d'enseignement et de recherche français ou étrangers, des laboratoires publics ou privés.



Distributed under a Creative Commons Attribution 4.0 International License

STUDY PROTOCOL

Open Access



# A prospective, randomized, phase II study to assess the schemas of retreatment with Lutathera<sup>®</sup> in patients with new progression of an intestinal, well-differentiated neuroendocrine tumor (ReLUTH)

Emmanuel Deshayes<sup>1,2\*</sup>, Eric Assenat<sup>3,4</sup>, Laetitia Meignant<sup>5</sup>, Manuel Bardiès<sup>1,2</sup>, Lore Santoro<sup>1,2</sup> and Sophie Gourgu<sup>6</sup>

## Abstract

**Background:** Although neuroendocrine tumors (NET) are classed as rare, they have a high prevalence and their incidence is increasing. Effective treatment with lutetium <sup>177</sup>-[177Lu]Lu-oxodotreotide (Lutathera<sup>®</sup>) is possible in patients with well-differentiated NET, improving progression-free survival (PFS), overall survival (OS), and quality of life (QoL). However, progression does occur. Retreatment with additional Lutathera<sup>®</sup> cycles is an option to extend PFS and OS. Two retreatment cycles are usually proposed. We aim to compare four versus two Lutathera<sup>®</sup> retreatment cycles in patients with new progression of a well-differentiated intestinal NET.

**Methods:** This will be a multicenter, randomized, controlled, open-label, phase II study in France (ReLUTH). The aim is to evaluate the efficacy of retreatment with Lutathera<sup>®</sup> in patients with progressive intestinal NET (determined by somatostatin-receptor positive imaging) after previous treatment with two cycles of Lutathera<sup>®</sup>. Before randomization, all patients will have already received two Lutathera<sup>®</sup> retreatment cycles (7.4 GBq infusion each, 8 weeks apart). A total of 146 patients will be randomized (1:1) to two additional cycles of Lutathera<sup>®</sup> (7.4 GBq infusion each, separated by 8 weeks) or to no treatment (active surveillance). Primary objective: efficacy of two additional Lutathera<sup>®</sup> retreatment cycles compared to active surveillance over 6 months. Primary endpoint: disease control rate at 6 months from randomization (defined as Complete Response, Partial Response, and Stable Disease in the Response Evaluation Criteria In Solid Tumours) with an evaluation every 2 months. A secondary objective will be the safety, as well as the PFS, OS, and QoL. It is expected that the efficacy of retreatment will increase after two additional Lutathera<sup>®</sup> cycles, with no increased safety concerns.

**Discussion:** Our prospective, randomized controlled study may lead to new recommendations for the use of Lutathera<sup>®</sup> in patients with intestinal progressive NET, and should confirm that four cycles will be more effective than

\*Correspondence: emmanuel.deshayes@icm.unicancer.fr

<sup>1</sup> Nuclear Medicine Department, Montpellier Cancer Institute (ICM), University of Montpellier, 208 Avenue des Apothicaires, 34298 Montpellier, France  
Full list of author information is available at the end of the article



© The Author(s) 2022. **Open Access** This article is licensed under a Creative Commons Attribution 4.0 International License, which permits use, sharing, adaptation, distribution and reproduction in any medium or format, as long as you give appropriate credit to the original author(s) and the source, provide a link to the Creative Commons licence, and indicate if changes were made. The images or other third party material in this article are included in the article's Creative Commons licence, unless indicated otherwise in a credit line to the material. If material is not included in the article's Creative Commons licence and your intended use is not permitted by statutory regulation or exceeds the permitted use, you will need to obtain permission directly from the copyright holder. To view a copy of this licence, visit <http://creativecommons.org/licenses/by/4.0/>. The Creative Commons Public Domain Dedication waiver (<http://creativecommons.org/publicdomain/zero/1.0/>) applies to the data made available in this article, unless otherwise stated in a credit line to the data.

two, with limited adverse impact on safety. Four Lutathera<sup>®</sup> treatment cycles have the potential to prolong life and improve quality of life in patients.

**Trial registration:** ClinicalTrials.gov: NCT04954820.

**Keywords:** 177Lu-DOTA-TATE, PRRT, Neuroendocrine tumor, Overall survival, Progression-free survival, Quality of life

## Background

Neuroendocrine tumors (NET) arise from neuroendocrine cells in the endocrine and central nervous systems. They are classified as a rare disease with a low incidence, but are becoming increasingly common. In the USA, for example, the incidence per 100,000 people has risen from 1.09 in 1973 to 6.98 in 2012 [1]. Due to the slow-growing nature of NET, they have a high prevalence, affecting 35 out of 100,000 people [1]. Two-thirds of NET occur in the gastrointestinal tract [1].

In the NETTER-1 clinical trial [2], peptide receptor radionuclide therapy (PRRT) with Lutathera<sup>®</sup> (<sup>177</sup>Lu) Lu-DOTA-TATE or [<sup>177</sup>Lu]Lu-oxodotréotide every 8 weeks (four doses) plus 30 mg octreotide LAR was compared with high-dose octreotide LAR (60 mg) every 4 weeks in patients with progressive and unresectable midgut, well-differentiated (grade [G]1, G2) NET with somatostatin-receptor positive imaging (SSTRi+). At follow-up (42 months), Lutathera had improved both the median progression-free survival (PFS) (28.4 vs. 8.5 months) and median overall survival (OS) (“not reached” vs. 27.4 months). The health-related quality of life in the NETTER-1 patients showed that Lutathera had a strong, positive impact on quality of life (global health status, hazard ratio [HR] 0.406), physical functioning (HR 0.518), role functioning (HR 0.580), fatigue (HR 0.621), pain (HR 0.566), diarrhea (HR 0.473), disease-related worries (HR 0.572), and body image (HR 0.425) [3]. Therefore, Lutathera treatment was approved by the European Medicines Agency and is now reimbursed in France for this specific indication, with four intravenous injections of 7.4 GBq of Lutathera<sup>®</sup> (delivered every 2 months. More recently [4], overall survival and long-term safety results have shown that Lutathera<sup>®</sup> did not significantly improve median overall survival versus high-dose, long-acting octreotide, but the 11.7-month difference may be considered clinically relevant. Long-term follow-up did not show any new toxicity concerns.

Despite these promising results, progression will occur within a variable time in most patients, leaving limited treatment options. Retreatment with additional cycles of Lutathera<sup>®</sup> may be a possibility. A few cohort studies have been published concerning retreatment. The most recent and largest one from Van der Zwan et al. [5] showed that in patients with gastroenteropancreatic (GEP)-NET ( $n=168$ ) and bronchial

NET ( $n=181$ ), the median PFS was 14.6 months after retreatment with two additional cycles of [<sup>177</sup>Lu]Lu-DOTA-TATE and the OS was significantly longer than in the non-randomized control group. Only patients with a PFS of  $\geq 18.0$  months from the first administration of initial PRRT were considered eligible for retreatment PRRT. The median PFS was 14.6, 14.7, and 20 months, respectively, for the foregut, midgut, and hindgut, while the OS was 33.9, 23.1, and 56.9 months. Interestingly, safety was similar between the salvage and initial PRRT groups: no grade 3/4 renal toxicity occurred, and hematological toxicities (acute myeloid leukemia and myelodysplastic syndrome) were similar to the group of patients who received the initial treatment (four cycles). Smaller cohort studies [6–10] showed that retreatment with [<sup>177</sup>Lu]Lu-DOTA-TATE led to an improvement in survival with an acceptable safety profile (in particular, there was no increase in the incidence of renal or hematotoxicity compared to “first PRRT”), even in patients who received eight or more cycles of [<sup>177</sup>Lu]Lu-DOTA-TATE.

Clinical practice regarding the number of new cycles is heterogeneous and most teams perform only two additional cycles (every 8 weeks), which were recently showed to be safe and effective [5]. The few studies to evaluate retreatment have been cohort studies. There is a need for a prospective trial to assess the effectiveness, safety, and quality of life after four cycles of retreatment with Lutathera<sup>®</sup> in patients with intestinal progressive SSTRi+NET, with the objective of a higher disease control rate. Accordingly, we plan to study the impact of two additional cycles compared to a controlled arm in active surveillance in the ReLUTH (retreatment with Lutathera<sup>®</sup>) trial. Different stratification factors will be used in the study, as follows: (a) the time of disease control after the “first” PRRT ( $< 18$  months vs.  $\geq 18$  months) – patients with a history of a durable PFS after initial PRRT tend to have long-lasting PFS after salvage treatment ( $p=0.04$ ) [9]; (b) type of progression (radiologic vs. no radiologic); (c) renal function (glomerular filtration rate (GFR)  $< 60$  mL/min vs.  $\geq 60$  mL/min), as it may have an impact on disease control [9] and OS [6]; (d) intercurrent line of treatment between “first” and “second” PRRT, as it is currently unclear (Yes vs. No).

The results of our prospective, randomized, controlled study may lead to new recommendations for

the use of PRRT in patients with intestinal progressive SSTRi + NET. ReLUTH would provide strong statistical data to confirm that in patients retreated for intestinal progressive NET, two additional cycles of Lutathera® will be safe and effective compared to only two cycles and will have a beneficial impact on quality of life. If our hypothesis is confirmed, the results of our study would be able to prolong life and improve quality of life in patients.

**Methods**

**Study design and objectives**

ReLUTH will be a prospective, multicenter, randomized, controlled, open-label, phase II trial performed throughout France (Fig. 1 and Additional file 1). The primary objective will be to evaluate the efficacy of two additional cycles of Lutathera® (one injection every two months) compared to active surveillance during 6 months in patients who have already been retreated with two cycles. The primary endpoint will be the disease control rate (DCR) at 6 months from randomization (defined as Complete Response, Partial Response, and Stable Disease in the Response Evaluation Criteria In Solid Tumours (RECIST) v1.1) with an evaluation every 2 months.

As secondary objectives, we intend to evaluate the safety (using National Cancer Institute-Common Terminology Criteria (NCI-CTCAE) v5.0), rPFS (defined as the time from randomization until documented disease progression on radiological tumor assessment (as evaluated by an independent central review by radiologists blinded to the treatment assignments according to RECIST v1.1) or death from any cause, whichever occurs first) and PFS

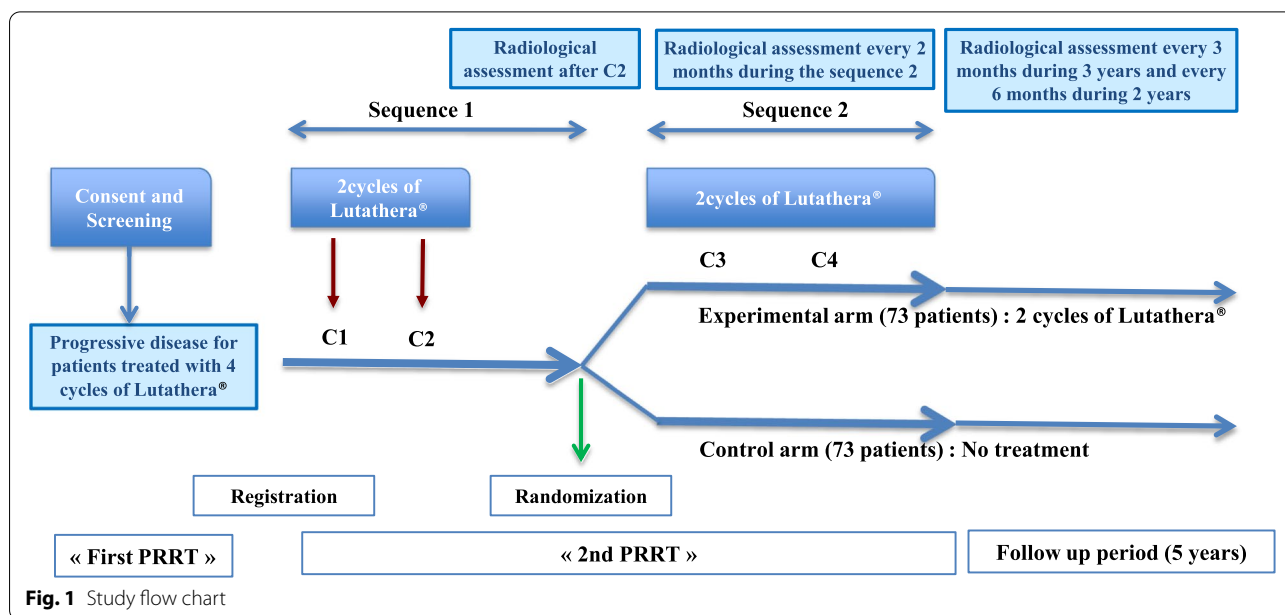
(defined as the time from randomization until documented disease progression on radiological tumor assessment, as evaluated in an independent central review by radiologists blinded to the treatment assignments according to RECIST v1.1), and OS (defined as the time from randomization until death from any cause). Quality of life (QoL) will also be assessed during and after treatment in both arms (assessed using the European Organization for Research and Treatment of Cancer (EORTC) QLQ-C30 and GLNET21 questionnaires).

The expected benefit will be an increase in the efficacy of retreatment after two additional cycles of Lutathera® compared to active surveillance in patients with an intestinal NET in relapse. The risk-benefit balance of the study will be continuously evaluated by the ICM Clinical Research Pharmacovigilance Unit and discussed in the periodic safety reports.

The study was approved by a national Ethics Committee and will be performed according to Good Clinical Practice and the Declaration of Helsinki. The trial was prospectively registered on ClinicalTrials.gov: NCT04954820. The study protocol adheres to SPIRIT guidelines.

**Patients**

Recruitment began in October 2021 and will be ongoing for 3 years. The intention is to recruit 176 patients with an intestinal NET previously treated by four cycles of Lutathera® who are presenting progression (clinic, biologic, and/or radiologic) and whose retreatment with Lutathera® has been decided by a multidisciplinary tumor board (RENATEN). This number will allow 146



**Fig. 1** Study flow chart

patients to be randomized. All patients will be followed for 60 months.

The principal inclusion criteria will be as follows: age  $\geq 18$  years; histologically-proven intestinal G1 or G2 NET; previous treatment with four cycles of Lutathera<sup>®</sup> (defined as “First PRRT”) and disease control after “First PRRT”  $\geq 12$  months; presentation of disease progression (clinic, biologic, and/or radiologic) after the first PRRT; decision to retreat with Lutathera<sup>®</sup> (defined as “Second PRRT”) validated by RENATEN and/or a multidisciplinary tumor board and in the scope of the French reimbursement process; Eastern Cooperative Oncology Group (ECOG) performance status 0–2; life expectancy  $\geq 6$  months, as prognosticated by the physician; SSTRi+disease within 4 months prior to randomization (may be positron emission tomography imaging [<sup>68</sup>Ga-based SSTR analogues] or scintigraphy imaging [<sup>111</sup>In-pentetreotide or <sup>99m</sup>Tc-octreotide];  $\geq 90\%$  of lesions must be SSTRi+with a significant uptake [beyond liver or surrounding tissue], measurable disease per RECIST 1.1 (Additional file 1); on CT/MRI scans, defined as  $\geq 1$  lesion with  $\geq 1$  cm in longest diameter, and  $\geq 2$  radiological tumor lesions in total; adequate bone marrow reserve [Hb  $> 8$  g/dl, neutrophils  $\geq 1500/\text{mm}^3$ , and platelets  $\geq 80\,000/\text{mm}^3$ ). All patients will be required to sign an informed consent before inclusion.

Principal exclusion criteria will include: no response (i.e., no complete response [CR], partial response [PR], or stable disease [SD]) to “first PRRT”; radiological progression after two cycles of “Second PRRT” according to RECIST version 1.1; G4 hematotoxicity and/or nephrotoxicity during the initial PRRT, or unresolved adverse events categorized as G2 or higher (as per the CTCAE v5.0 from previous PRRT cycles or any other therapy for NET, excluding alopecia and peripheral neuropathy); pancreatic NET; neuroendocrine carcinoma; patients with prior external beam radiation therapy to  $> 25\%$  of the bone marrow; severe renal impairment (GFR according to the Modification of Diet in Renal Disease  $< 40$  mL/min or nephrotic syndrome) or hepatic insufficiency (alanine aminotransferase/aspartate aminotransferase  $> 2.5$  x the upper limit of normal [ULN], or  $> 5$  x ULN if liver function abnormalities are due to the underlying malignancy, and/or total serum bilirubin  $> 2.5$  x ULN); any other uncontrolled concomitant disease or brain metastases (unless they have been treated and stabilized for at least 24 weeks prior to enrolment in the study; patients with a history of brain metastases must have had a head CT scan with contrast or MRI to document stable disease prior to enrolment in the study); history of another solid tumor in the 5 years before inclusion, apart from treated and controlled cancer in the cervix and skin cancer (basal or squamous cell).

## Treatments

Before randomization, all patients will have received two retreatment cycles of Lutathera<sup>®</sup> (7.4 GBq infusion each, separated by 8 weeks) (Fig. 1). A radiological tumor assessment will be performed after two cycles. Patients with progression during the first sequence of Lutathera<sup>®</sup> retreatment will be considered as screen failure and will be followed until the end of the study.

## Randomization and masking

Randomization (1:1) will be performed using Ennov-Clinical software. Patients will be randomized to the experimental arm, consisting of two additional cycles of Lutathera<sup>®</sup> (7.4 GBq infusion each, separated by 8 weeks), or the control arm with no treatment (active surveillance) (Fig. 1).

## Statistical considerations

A median PFS of 15 months [11] after two cycles of Lutathera<sup>®</sup> for retreatment corresponds to around a 65% disease control rate 6 and 10 months from randomization and inclusion, respectively. To detect a minimal difference of 20% in disease control rate at 6 months post-randomization (65% vs. 85%) between the control and experimental groups, respectively, with a power of 80% and a 5% two-sided significance level, a total of 146 patients is required for randomization (73 patients per arm). Non-evaluable patients will be considered as failure. We estimate that around 176 patients will need to be included to ensure that 146 patients are randomized.

All analyses will be performed on an intention-to-treat (ITT) basis, defined as all randomized patients, while the safety population will comprise all treated patients who received at least one dose of treatment after inclusion. The primary endpoint will also be analyzed in the per-protocol (PP) population, defined as all eligible patients (patients with no major violations of the inclusion/non-inclusion criteria) and evaluable patients (randomized treated patients with a minimum of two evaluations).

Categorical variables will be reported with numbers and frequencies and continuous variables with medians and ranges. Qualitative variables will be compared using chi-square or Fisher’s exact tests, while quantitative variables will be compared using the Kruskal-Wallis test. The DCR will be reported using percentages and 95% confidence intervals (CI) (binomial exact method). Event-free survival (PFS, OS) will be estimated using the Kaplan-Meier method and compared using the stratified log-rank test. Statistical analyses will be performed using STATA 16.0 (StatCorp, College Station, TX, USA) and SAS 9.4 software.

### Ancillary study

There is a growing interest in dosimetry, to document the irradiation delivered and potentially allow treatment personalization [12]. Indeed, the amount of radioactivity injected into patients is fixed (7.4 GBq), but the dose deposit to organs and tumors may present with large variations related to different pharmacokinetics between patients. Two studies have either been completed or are ongoing [13, 14] and preliminary results are promising [11]. Performing clinical dosimetry requires acquiring imaging data on dose limiting organs (especially the kidney and bone marrow) and tumors in a salvage PRRT setting. This ancillary study will collect data from around 50 patients in centers that already perform dosimetry for Lutathera<sup>®</sup>. Correlation with clinical outcomes (disease control rate and toxicity) will be studied. This will allow assessment of the absorbed dose-effect relationship in patients treated with up to eight Lutathera<sup>®</sup> cycles.

### Availability of data and materials

The database will be hosted by the Institut du Cancer Montpellier, Montpellier, France. Participant data will be available upon reasonable request and with the completion of a contract between the sponsor and the applicant.

### Role of the funding sources

The study was funded by the Direction Generale de l'Offre de Soins (reference no. PHRC-K 20-034) after international review by an expert board. The funder had no role in study design, collection, analysis or interpretation of data, writing of the report or decision to submit the paper for publication.

### Discussion

No prospective trial has evaluated retreatment with Lutathera<sup>®</sup>. Our prospective, randomized controlled study may lead to new recommendations for the reuse of Lutathera<sup>®</sup> in patients with intestinal progressive NET. Four additional cycles should be more effective than two in terms of survival and quality of life, with constant monitoring of toxicities.

One of the challenges of this study will be to obtain a sufficient number of randomized patients to receive the expected number of cycles. Indeed, withdrawal of patients due to toxicities or disease progression during the first two cycles of treatment is a distinct possibility. Another challenge is the large number of participating centers ( $n=22$ ), many of which opened within the 6 first

months of the study. However, this number will allow us to include the required number of patients.

The ancillary dosimetric study will be of great importance. Although treatment will be based on fixed infusions (7.4 GBq) in every cycle, there will be a wide variability in dose deposit to tumors and organs in each patient. The dose-effect relationship is not obvious and more data has to be collected to better understand how the dose to tumors affects response, and how the dose to healthy organs may cause toxicities. Coordinating a multicentric ancillary dosimetry study will be difficult, however. Issues may arise concerning, for example, preliminary assessment of the qualification of each associated center, standardization of acquisition and reconstruction procedures (performed locally by each participating center), definition of quality assurance and quality control adapted to the purpose, image transfer in a format that allows centralized dosimetry, and ensuring that the anonymization process (performed locally by each participating center) does not prevent performance of the dosimetry study [15]. Communication between medical physicists in each center was a prerequisite for the successful implementation of this ancillary study. Image acquisition and dosimetry protocols have been standardized as much as possible, taking into account the specificities of each nuclear medicine department.

### Abbreviations

CI: confidence interval; CR: complete response; DCR: disease control rate; ECOG: Eastern Cooperative Oncology Group; EORTC: European Organization for Research and Treatment of Cancer; G: grade; GEP: gastroenteropancreatic; GFR: glomerular filtration rate; HR: hazard ratio; ITT: intention-to-treat; NCI-CTCAE: National Cancer Institute-Common Terminology Criteria for Adverse Events; NCI-CTC: National Cancer Institute-Common Terminology Criteria; ORR: overall response rate; OS: overall survival; PFS: progression-free survival; PP: per protocol; PR: partial response; PRRT: peptide receptor radionuclide therapy; RECIST: Response Evaluation Criteria In Solid Tumours; RT: radiotherapy; SD: stable disease; SSTRI+: somatostatin-receptor positive imaging; ULN: upper limit of normal.

### Supplementary Information

The online version contains supplementary material available at <https://doi.org/10.1186/s12885-022-10443-4>.

**Additional file 1.** Schedule of enrolment, interventions, and assessments.

### Acknowledgements

We thank David Taieb, Frederic Courbon, and Elif Hindie for their help in the conception of the study design. The manuscript was reviewed by a native English speaker and professional medical writer (Deborah Nock, Medical WriteAway, Norwich, UK).

### Authors' contributions

ED developed the study concept and protocol. EA, LS, MB, SG and LM were major contributors in further development of the protocol. All authors will be involved in the conduct of the clinical trial. All authors have read and approved the final manuscript for the study protocol.

### Funding

The study will be funded by the Direction Generale de l'Offre de Soins (reference no. PHRC-K 20–034). The funder will have no role in study design, collection, analysis, or interpretation of data, writing of the report, or decision to submit the paper for publication.

### Availability of data and materials

Not applicable.

### Declarations

#### Ethics approval and consent to participate

This study received ethical approval from both the "Comité de Protection des Personnes Ile de France 3" in July 2021 (project reference 3940-I) and the National Agency for Medical and Health Products Safety (project reference 2021-001306-30) in September 2021. All patients will give their written informed consent before any study-related assessment begins.

#### Consent for publication

Not applicable.

#### Competing interests

The authors declare no conflicts of interest.

#### Author details

<sup>1</sup>Nuclear Medicine Department, Montpellier Cancer Institute (ICM), University of Montpellier, 208 Avenue des Apothicaires, 34298 Montpellier, France.

<sup>2</sup>Institut de Recherche en Cancérologie de Montpellier (IRCM), INSERM U1194, University of Montpellier, Montpellier, France. <sup>3</sup>Medical Oncology Department, Montpellier Cancer Institute (ICM), University of Montpellier, Montpellier, France. <sup>4</sup>Medical Oncology Department, CHU Montpellier, University of Montpellier, Montpellier, France. <sup>5</sup>Clinical Research and Innovation Department, Montpellier Cancer Institute (ICM), University of Montpellier, Montpellier, France. <sup>6</sup>Biometrics Unit, Montpellier Cancer Institute (ICM), University of Montpellier, Montpellier, France.

Received: 8 November 2022 Accepted: 13 December 2022

Published online: 22 December 2022

### References

1. Yao JC, Hassan M, Phan A, Dagohoy C, Leary C, Mares JE, et al. One hundred years after "carcinoid": epidemiology of and prognostic factors for neuroendocrine tumors in 35,825 cases in the United States. *J Clin Oncol*. 2008;26(18):3063–72.
2. Strosberg J, El-Haddad G, Wolin E, Hendifar A, Yao J, Chasen B, et al. Phase 3 trial of (177)Lu-Dotatate for Midgut neuroendocrine tumors. *N Engl J Med*. 2017;376(2):125–35.
3. Strosberg J, Wolin E, Chasen B, Kulke M, Bushnell D, Caplin M, et al. Health-Related quality of life in patients with Progressive Midgut neuroendocrine tumors treated with (177)Lu-Dotatate in the phase III NETTER-1 trial. *J Clin Oncol*. 2018;36(25):2578–84.
4. Strosberg JR, Caplin ME, Kunz PL, Ruszniewski PB, Bodei L, Hendifar A, et al. (177)Lu-Dotatate plus long-acting octreotide versus high-dose long-acting octreotide in patients with midgut neuroendocrine tumours (NETTER-1): final overall survival and long-term safety results from an open-label, randomised, controlled, phase 3 trial. *Lancet Oncol*. 2021;22(12):1752–63.
5. van der Zwan WA, Brabander T, Kam BLR, Teunissen JJM, Feelders RA, Hofland J, Krenning EP, de Herder WW. Salvage peptide receptor radionuclide therapy with [(177)Lu-DOTA,tyr(3)]octreotate in patients with bronchial and gastroenteropancreatic neuroendocrine tumours. *Eur J Nucl Med Mol Imaging*. 2019;46(3):704–17.
6. Rudisile S, Gosewisch A, Wenter V, Unterrainer M, Boning G, Gildehaus FJ, et al. Salvage PRRT with (177)Lu-DOTA-octreotate in extensively pre-treated patients with metastatic neuroendocrine tumor (NET): dosimetry, toxicity, efficacy, and survival. *BMC Cancer*. 2019;19(1):788.
7. Vaughan E, Machta J, Walker M, Toumpanakis C, Caplin M, Navalkissoor S. Retreatment with peptide receptor radionuclide therapy in patients with

- progressing neuroendocrine tumours: efficacy and prognostic factors for response. *Br J Radiol*. 2018;91(1091):20180041.
8. Yordanova A, Mayer K, Brossart P, Gonzalez-Carmona MA, Strassburg CP, Essler M, Ahmadzadehfar H. Safety of multiple repeated cycles of (177)Lu-octreotate in patients with recurrent neuroendocrine tumour. *Eur J Nucl Med Mol Imaging*. 2017;44(7):1207–14.
  9. Sabet A, Haslerud T, Pape UF, Sabet A, Ahmadzadehfar H, Grunwald F, Guhlke S, Biersack HJ, Ezziddin S. Outcome and toxicity of salvage therapy with 177Lu-octreotate in patients with metastatic gastroenteropancreatic neuroendocrine tumours. *Eur J Nucl Med Mol Imaging*. 2014;41(2):205–10.
  10. van Essen M, Krenning EP, Kam BL, de Herder WW, Feelders RA, Kwekkeboom DJ. Salvage therapy with (177)Lu-octreotate in patients with bronchial and gastroenteropancreatic neuroendocrine tumors. *J Nucl Med*. 2010;51(3):383–90.
  11. Sundlöv A, Gleisner KS, Tennvall J, Ljungberg M, Warfvinge CF, Holgersson K, Hallqvist A, Bernhardt P, Svensson J. Phase II trial demonstrates the efficacy and safety of individualized, dosimetry-based 177Lu-DOTATATE treatment of NET patients. *Eur J Nucl Med Mol Imaging*. 2022;49(11):3830–40.
  12. Sjögreen Gleisner K, Chouin N, Gabina PM, Cicone F, Gnesin S, Stokke C, et al. EANM dosimetry committee recommendations for dosimetry of 177Lu-labelled somatostatin-receptor- and PSMA-targeting ligands. *Eur J Nucl Med Mol Imaging*. 2022;49(6):1778–809.
  13. Sundlöv A, Sjögreen-Gleisner K, Svensson J, Ljungberg M, Olsson T, Bernhardt P, Tennvall J. Individualised (177)Lu-DOTATATE treatment of neuroendocrine tumours based on kidney dosimetry. *Eur J Nucl Med Mol Imaging*. 2017;44(9):1480–9.
  14. Del Prete M, Buteau FA, Arsenaault F, Saighi N, Bouchard LO, Beaulieu A, Beaugregard JM. Personalized (177)Lu-octreotate peptide receptor radionuclide therapy of neuroendocrine tumours: initial results from the P-PRRT trial. *Eur J Nucl Med Mol Imaging*. 2019;46(3):728–42.
  15. Taprogge J, Wadsley J, Miles E, Flux GD. Recommendations for Multicentre clinical trials involving Dosimetry for Molecular Radiotherapy. *Clin Oncol*. 2021;33(2):131–6.

### Publisher's Note

Springer Nature remains neutral with regard to jurisdictional claims in published maps and institutional affiliations.

Ready to submit your research? Choose BMC and benefit from:

- fast, convenient online submission
- thorough peer review by experienced researchers in your field
- rapid publication on acceptance
- support for research data, including large and complex data types
- gold Open Access which fosters wider collaboration and increased citations
- maximum visibility for your research: over 100M website views per year

At BMC, research is always in progress.

Learn more [biomedcentral.com/submissions](https://biomedcentral.com/submissions)

