



HAL
open science

Maternal diet in pregnancy and child's respiratory outcomes: an individual participant data meta-analysis of 18000 children

Sara Mensink-Bout, Evelien van Meel, Johan de Jongste, Isabella Annesi-maesano, Adrien M Aubert, Jonathan Y. Bernard, Ling-Wei Chen, Cyrus Cooper, Sarah Crozier, Wojciech Hanke, et al.

► To cite this version:

Sara Mensink-Bout, Evelien van Meel, Johan de Jongste, Isabella Annesi-maesano, Adrien M Aubert, et al.. Maternal diet in pregnancy and child's respiratory outcomes: an individual participant data meta-analysis of 18000 children. *European Respiratory Journal*, 2022, 59 (4), pp.2101315. 10.1183/13993003.01315-2021 . hal-03676074

HAL Id: hal-03676074

<https://hal.umontpellier.fr/hal-03676074>

Submitted on 23 May 2022

HAL is a multi-disciplinary open access archive for the deposit and dissemination of scientific research documents, whether they are published or not. The documents may come from teaching and research institutions in France or abroad, or from public or private research centers.




L'archive ouverte pluridisciplinaire **HAL**, est destinée au dépôt et à la diffusion de documents scientifiques de niveau recherche, publiés ou non, émanant des établissements d'enseignement et de recherche français ou étrangers, des laboratoires publics ou privés.



Distributed under a Creative Commons Attribution - NonCommercial | 4.0 International License



Maternal diet in pregnancy and child's respiratory outcomes: an individual participant data meta-analysis of 18 000 children

Sara M. Mensink-Bout ^{1,2}, Evelien R. van Meel^{1,2}, Johan C. de Jongste², Isabella Annesi-Maesano ³, Adrien M. Aubert⁴, Jonathan Y. Bernard ^{4,5}, Ling-Wei Chen⁶, Cyrus Cooper^{7,8}, Sarah R. Crozier⁷, Wojciech Hanke⁹, Nicholas C. Harvey^{7,8}, James R. Hébert^{10,11}, Barbara Heude⁴, Joanna Jerzynska¹², Cecily C. Kelleher⁶, John Mehegan⁶, Fionnuala M. McAuliffe¹³, Catherine M. Phillips ⁶, Kinga Polanska⁹, Caroline L. Relton¹⁴, Nitin Shivappa^{10,11}, Matthew Suderman¹⁴, Vincent W.V. Jaddoe^{1,15} and Liesbeth Duijts ^{1,2,16}

¹The Generation R Study Group, Erasmus MC, University Medical Center, Rotterdam, The Netherlands. ²Department of Pediatrics, Division of Respiratory Medicine and Allergology, Erasmus MC, University Medical Center, Rotterdam, The Netherlands. ³Institute of Epidemiology and Public Health, EPAR, Sorbonne Université, Paris, France. ⁴Centre for Research in Epidemiology and Statistics (CRESS), Université de Paris, Paris, France. ⁵Singapore Institute for Clinical Sciences (SICS), Agency for Science, Technology and Research (A*STAR), Singapore. ⁶HRB Centre for Health and Diet Research, School of Public Health, Physiotherapy, and Sports Science, University College Dublin, Dublin, Ireland. ⁷MRC Lifecourse Epidemiology Unit, University of Southampton, Southampton General Hospital, Southampton, UK. ⁸NHR Southampton Nutrition Biomedical Research Centre, University of Southampton and University Hospital Southampton NHS Foundation Trust, Southampton, UK. ⁹Department of Environmental Epidemiology, Nofer Institute of Occupational Medicine, Lodz, Poland. ¹⁰Cancer Prevention and Control Program and Department of Epidemiology and Biostatistics, Arnold School of Public Health, University of South Carolina, Columbia, SC, USA. ¹¹Department of Nutrition Connecting Health Innovations LLC, Columbia, SC, USA. ¹²Department of Pediatrics and Allergy, Medical University of Lodz, Copernicus Memorial Hospital, Lodz, Poland. ¹³UCD Perinatal Research Centre, School of Medicine, University College Dublin, National Maternity Hospital, Dublin, Ireland. ¹⁴MRC Integrative Epidemiology Unit, Population Health Sciences, Bristol Medical School, University of Bristol, Bristol, UK. ¹⁵Department of Pediatrics, Erasmus MC, University Medical Center, Rotterdam, The Netherlands. ¹⁶Department of Pediatrics, Division of Neonatology, Erasmus MC, University Medical Center, Rotterdam, The Netherlands.

Corresponding author: Liesbeth Duijts (l.duijts@erasmusmc.nl)



Shareable abstract (@ERSpublications)

A suboptimal maternal diet in pregnancy, as defined by a higher inflammatory potential or low quality of the diet, does not play an important role in the development of respiratory diseases in childhood <https://bit.ly/38dj3jU>

Cite this article as: Mensink-Bout SM, van Meel ER, de Jongste JC, *et al.* Maternal diet in pregnancy and child's respiratory outcomes: an individual participant data meta-analysis of 18 000 children. *Eur Respir J* 2022; 59: 2101315 [DOI: 10.1183/13993003.01315-2021].

Copyright ©The authors 2022.

This version is distributed under the terms of the Creative Commons Attribution Non-Commercial Licence 4.0. For commercial reproduction rights and permissions contact permissions@ersnet.org

Received: 28 Aug 2020
Accepted: 20 Aug 2021



Abstract

Rationale Severe fetal malnutrition has been related to an increased risk of respiratory diseases later in life, but evidence for the association of a suboptimal diet during pregnancy with respiratory outcomes in childhood is conflicting. We aimed to examine whether a pro-inflammatory or low-quality maternal diet during pregnancy was associated with child's respiratory health.

Methods We performed an individual participant meta-analysis among 18 326 mother–child pairs from seven European birth cohorts. Maternal pro-inflammatory and low-quality diets were estimated by energy-adjusted Dietary Inflammatory Index (E-DII) and Dietary Approaches to Stop Hypertension (DASH) scores. Preschool wheezing and school-age asthma were measured using questionnaires and lung function by spirometry.

Results After adjustment for lifestyle and sociodemographic factors, we observed that a higher maternal E-DII score (a more pro-inflammatory diet) during pregnancy was associated only with a lower forced vital capacity (FVC) in children (z-score difference -0.05 , 95% CI -0.08 – -0.02 , per interquartile range increase). No linear associations of the maternal E-DII or DASH score with child's wheezing or asthma were observed. In an exploratory examination of the extremes, a very low DASH score (<10th percentile) (a very low dietary quality) was associated with an increased risk of preschool wheezing and a low forced expiratory volume in 1 s/FVC (z-score <-1.64) (OR 1.20, 95% CI 1.06–1.36 and z-score difference 1.40,

95% CI 1.06–1.85, compared to ≥ 10 th percentile), with corresponding population attributable risk fractions of 1.7% and 3.3%, respectively.

Conclusion The main results from this individual participant data meta-analysis do not support the hypothesis that maternal pro-inflammatory or low-quality diet in pregnancy are related to respiratory diseases in childhood.

Introduction

Asthma is a common disorder in childhood, and is associated with respiratory health problems in adulthood [1, 2]. Therefore, it is important to identify early-life modifiable risk factors. Fetal exposure to a suboptimal diet during pregnancy might affect the maturation of the lungs and immune system, leading to a lower lung function and a higher risk of wheezing and asthma in childhood [3]. Severe malnutrition in pregnancy has previously been associated with an increased risk of respiratory diseases later in life [4]. Studies examining maternal diet during pregnancy and childhood respiratory health mainly focused on the intake of specific nutrients or food groups [5]. However, examining the overall diet might take the interactions within the diet into account and be better translatable to dietary guidelines [6]. The energy-adjusted Dietary Inflammatory Index (E-DII) [7] and Dietary Approaches to Stop Hypertension (DASH) [8] provide dietary scores for the inflammatory potential and overall quality of the diet, respectively. Cohort studies showed that a higher maternal E-DII in pregnancy was associated with a higher risk of an early wheeze trajectory and a lower mid-expiratory flow or a higher risk of asthma in childhood [9, 10]. The relationship of the DASH score with respiratory outcomes has been studied only in adults, where a DASH-promoting behavioural intervention seemed to improve asthma control [11]. To date, a pooled analysis across cohorts which examines the relationship of the inflammatory potential and overall quality of maternal diet during pregnancy with child's respiratory health is lacking.

We performed an individual participant data meta-analysis among 18326 children, participating in seven European birth cohort studies. We assessed the associations of maternal diet during pregnancy, as summarised by the E-DII and DASH score, with preschool wheezing, school-age asthma and lung function, and estimated the impact of these associations on the general population by calculating the population attributable fraction.

Methods

This meta-analysis was performed among seven European prospective birth cohorts participating in the ALPHABET consortium, which aims to examine the early-life nutritional programming of noncommunicable diseases (supplementary methods) [12, 13]. We included 18326 mother-child pairs for the current analyses (supplementary methods).

Maternal diet

Information obtained from food frequency questionnaires (FFQs) before or during pregnancy was used to generate the maternal E-DII and DASH scores (supplementary tables S1 and S2), as described previously (supplementary methods) [7, 13]. To control for the effect of the total energy intake, the E-DII, calculated per 1000 kcal of food consumed, was used. The E-DII in ALPHABET was generated from 20–28 dietary parameters, out of 44 possible parameters. A higher E-DII score characterises a more pro-inflammatory diet [7]. For the seven cohorts in the ALPHABET project, a DASH score was generated. This score was composed of eight food components, based mainly on the Fung method with a scoring system based on quintile rankings in each cohort [8, 13]. A lower DASH score characterises a lower dietary quality. For the main analyses, we used data collected at one time point, preferably in early pregnancy (first or second trimester) (Generation R, Lifeways, REPRO_PL, ROLO and the Southampton Women's Survey (SWS) cohorts), since this period is of specific importance for lung disease development later in life [14], or, if not available, in late pregnancy (third trimester) (Avon Longitudinal Study of Parents and Children (ALSPAC) and EDEN cohorts).

Respiratory health

Data on preschool wheezing and school-age asthma was mainly obtained from questions adapted from the International Study of Asthma and Allergies in Childhood questionnaire [15]. We defined preschool wheezing as “ever reported wheezing during the first 4 years of life” and school-age asthma as “asthma diagnosis reported between 5 and 10 years” [16]. Cohort-specific information is shown in the supplementary methods and supplementary table S1. All cohorts obtained lung function measures by spirometry according to the American Thoracic Society/European Respiratory Society guidelines [17]. Lung function measures included forced expiratory volume in 1 s (FEV₁), forced vital capacity (FVC), FEV₁/FVC ratio and forced expiratory flow at 25–75% of FVC (FEF_{25–75}), and were converted into sex-, age-, height- and ethnicity-adjusted z-scores based on the Global Lung Initiative reference values [18].

Covariates

Information on lifestyle- and sociodemographic-related confounders, intermediates and effect modifiers was mainly obtained by questionnaires or clinical examinations at the research centre (supplementary methods and table S1).

Statistical analyses

Dietary scores were analysed as continuous variables to study the linear associations, and additionally as dichotomous variables to explore the effect of the extremes. We first conducted one-stage meta-analyses by using multilevel linear regression models or multilevel logistic regression models to study the associations of the maternal E-DII and DASH scores with child's respiratory outcomes. In these models, individual participant data from all cohorts were combined and modelled simultaneously, taking into account clustering of participants within cohorts [19]. We included a random intercept at cohort level, which allows intercepts to vary across cohorts. More information on the used models is provided in the supplementary methods. As explorative analyses to examine the effect of an extreme adverse diet in pregnancy, we additionally studied the dichotomous relationships and examined the associations of a very high E-DII score (>90th percentile) or low DASH score (<10th percentile) with wheezing and asthma, and with lung function below the lower limit of normal (LLN) (<5th percentile, equals z-score of -1.64). The highest and lowest 10th percentile cut-off for the dietary scores is a common epidemiological approach, in the absence of clinical cut-offs. If consistent associations were observed, we subsequently calculated the population attributable risk fraction based on the adjusted odds ratio and the prevalence of a high E-DII or low DASH score, which indicates the proportion of wheezing, asthma or lung function measures below the LLN attributable to a high E-DII or low DASH score [20]. We considered the linear confounder models as the main models and applied several additional analyses to these models, as described in the supplementary methods.

P-values are two-tailed and statistical significance was defined at $p < 0.05$. We did not adjust for multiple testing, since respiratory outcomes are strongly interrelated [21]. Statistical analyses were performed using SPSS version 24.0 (IBM, Armonk, NY, USA) and RevMan version 5.3 (Nordic Cochrane Centre, Copenhagen, Denmark) and R version 3.6.1 ("mediation" package; www.r-project.org).

Ethical approvals

Specific cohort approvals are for ALSPAC by the ALSPAC ethics and law committee (IRB00003312) and local research ethics committees; informed consent for the use of data collected *via* questionnaires and clinics was obtained from participants following the recommendations of the ALSPAC ethics and law committee at the time; for EDEN by the ethics committee and the Commission Nationale Informatique et Liberté, the French data privacy institution; for Generation R by the medical ethical committee of the Erasmus Medical Center (Rotterdam, the Netherlands); for Lifeways by the University College Dublin research ethics committee and St Vincent's University Hospital research ethics committee; for REPRO_PL by the ethical committee of the Nofer Institute of Occupational Medicine (Łódź, Poland; decision numbers 7/2007, 3/2008, 22/2014); for ROLO by the ethics committee of the National Maternity Hospital (Dublin, Ireland); and for SWS by the Southampton and South West Hampshire research ethics committee.

Results

Subject characteristics

Table 1 shows the main characteristics, maternal dietary scores and child's respiratory outcomes of the cohorts, and supplementary tables S3 and S4 show the corresponding information on maternal and child-related baseline characteristics. The median age of the included children at lung function measurement was 8.6 years (95% range 5.4–10.2 years). Of all participants, 51.9% ($n=8018$) had preschool wheezing and 15.6% ($n=2193$) had school-age asthma. The correlation between the E-DII and DASH score was moderate (Pearson r range -0.49 to -0.60 , $p < 0.001$).

Maternal E-DII and DASH score and child's respiratory outcomes

Table 2 shows that after adjustment for confounders, only an association of a higher maternal E-DII score during pregnancy with a lower FVC in the children was observed (z-score difference -0.05 , 95% CI -0.08 – -0.02). A lower DASH score was not associated with preschool wheezing, school-age asthma or lung function measures. We observed no consistent associations for both the maternal E-DII and DASH score with FEF_{25-75} (results not shown).

When exploratively examining the extremes, we observed no associations of a very high maternal E-DII score (>90th percentile) with child's respiratory outcomes compared to a normal maternal E-DII score (≤ 90 th percentile) after adjustment for confounders (figure 1). A very low DASH score (<10th percentile)

TABLE 1 Characteristics of participating cohorts

	ALSPAC (UK)	EDEN (France)	Generation R (the Netherlands)	Lifeways (Ireland)	REPRO_PL (Poland)	ROLO (Ireland)	SWS (UK)
Total participants	10 130	843	4263	224	523	301	2042
Inclusion years	1990–1992	2003–2006	2002–2006	2001–2003	2007–2011	2007–2011	1998–2002
Pregnancy							
FFQ (GA in weeks)[#]	32	24–28 Birth	<24	12–16	20–24	≤28	PP 11 34
FFQ assessed period	LP	PP LP	EP	EP	EP	EP	PP EP LP
E-DII score	0.51±1.82	0.76±1.65	−0.43±1.10	−0.12±1.43	−1.10±1.54	0.12±1.74	0.27±1.49
DASH score	24.1±4.0	24.3±4.1	24.4±4.4	25.2±4.5	24.1±4.4	24.2±4.1	24.1±4.3
Preschool wheezing							
Participants	9313	840	2876	NA	370	NA	2037
Age (years) [#]	0–3.5	0–4	1–4	NA	1–2	NA	0–3
Yes % (n)	54.4 (5070)	36.8 (309)	49.7 (1429)	NA	18.4 (68)	NA	56.1 (1142)
School-age asthma							
Participants n	7506	842	3510	224	275	301	1421
Age (years) [#]	8	5–8	9	9	7–8	5	5
Yes % (n)	20.3 (1525)	12.1 (102)	8.9 (312)	5.4 (12)	6.2 (17)	7.6 (23)	14.2 (202)
Lung function							
Participants n	5766	838	3651	NA	264	NA	730
Age (years)	8.6 (8.3–9.5)	5.6 (5.4–6.0)	9.8 (9.4–10.7)	NA	7.2 (7.0–8.8)	NA	6.5 (6.2–6.9)
FEV ₁ (z-score)	−0.03±1.01	−0.70±1.45	0.17±0.98	NA	−0.32±1.74	NA	0.09±0.98
FVC (z-score)	−0.04±1.02	−1.00±1.48	0.21±0.93	NA	−0.44±1.85	NA	0.15±1.06
FEV ₁ /FVC (z-score)	0.05±1.07	0.87±1.06	−0.11±0.95	NA	0.30±1.25	NA	−0.08±1.06
FEF _{25–75} (z-score)	−0.15±1.02	−0.39±1.09	0.43±1.08	NA	−0.14±1.01	NA	−0.25±0.92

Data are presented as n, mean±SD, median (95% range) or valid percentages (absolute numbers). ALSPAC: Avon Longitudinal Study of Parents and Children; SWS: Southampton Women's Survey; FFQ: food frequency questionnaire; GA: gestational age; E-DII: energy-adjusted Dietary Inflammatory Index; DASH: Dietary Approaches to Stop Hypertension; FEV₁: forced expiratory volume in 1 s; FVC: forced vital capacity; FEF_{25–75}: forced expiratory flow at 25–75% of FVC; PP: pre-pregnancy; LP: late pregnancy (third trimester); EP: early pregnancy (first or second trimester); NA: not available. #: time period of questionnaire assessment.

was associated with a higher risk of preschool wheezing and an FEV₁/FVC below the LLN, and borderline associated with a higher risk of asthma (OR 1.20, 95% CI 1.06–1.36; z-score 1.40, 95% CI 1.06–1.85; OR 1.17, 95% CI 1.00–1.39, respectively, as compared to a DASH score ≥10th percentile). The estimated proportions of wheezing, FEV₁/FVC below the LLN and asthma attributable to a low DASH score were 1.7%, 3.3% and 1.4%, respectively.

Additional analyses

Additional adjustment for early growth factors, lower respiratory tract infections, child's body mass index (BMI) or child's E-DII score did not materially change the effects (results not shown). Further mediation analyses showed that early growth factors and child's E-DII score only explained 6.2% (95% CI 2.3–21.0%) and 17.8% (95% CI 2.6–48.0%) of the association of the E-DII score with FVC. We observed a consistent interaction between the maternal DASH score and child's sex (interaction terms p-value range <0.001–0.549), but not between maternal dietary scores and child's atopic predisposition. After stratification by sex, no consistent differences between boys and girls in the association of the maternal E-DII or DASH score with child's respiratory outcomes were observed (supplementary table S5). The two-stage random-effect meta-analyses indicated at most moderate heterogeneity (range I² 0–52%) and similar effects as the one-stage meta-analyses (supplementary figures S2 and S3). When we examined the dietary scores per time period of assessment in pregnancy, directions of the associations with respiratory outcomes were similar for all time periods (supplementary table S6). Examining the associations of maternal dietary scores with lung function measures in age groups of children showed that among children aged ≥8 years, a higher maternal E-DII score was associated with a lower FEV₁ and FVC, and a lower maternal DASH score with a lower FEV₁ (supplementary table S7). We repeated the main models restricted to complete cases, to mothers with a European birthplace/ethnic background, and excluding one

TABLE 2 Linear associations of maternal energy-adjusted Dietary Inflammatory Index (E-DII) and Dietary Approaches to Stop Hypertension (DASH) score with preschool wheezing and school-age asthma and lung function

	Preschool wheezing OR (95% CI)	School-age asthma OR (95% CI)	FEV ₁ z-score change (95% CI)	FVC z-score change (95% CI)	FEV ₁ /FVC z-score change (95% CI)
Participants, n	15436	14079	11249	11249	11249
E-DII score, per IQR increase					
Basic model [#]	1.14 (1.09–1.20)**	1.07 (1.00–1.15)*	−0.03 (−0.05–0.00)	−0.04 (−0.07– −0.01)*	0.02 (−0.01–0.05)
p-value	<0.001	0.047	0.082	0.010	0.11
Confounder model [¶]	1.02 (0.97–1.07)	1.00 (0.93–1.07)	−0.03 (−0.06–0.00)	−0.05 (−0.08– −0.02)**	0.03 (−0.00–0.06)
p-value	0.484	0.883	0.057	0.003	0.051
DASH score, per IQR decrease					
Basic model [†]	1.15 (1.10–1.21)**	1.16 (1.08–1.24)**	−0.01 (−0.04–0.02)	−0.01 (−0.04–0.02)	−0.02 (−0.05–0.01)
p-value	<0.001	<0.001	0.421	0.865	0.122
Confounder model [¶]	1.04 (0.98–1.09)	1.06 (0.99–1.14)	−0.02 (−0.05–0.01)	−0.01 (−0.04–0.02)	−0.02 (−0.05–0.01)
p-value	0.180	0.123	0.250	0.506	0.170

Values are derived from multilevel logistic or linear regression models and reflect odds ratios or changes in z-scores with their corresponding 95% confidence intervals per interquartile range (IQR) increase in the E-DII score or per IQR decrease in the DASH score. Bold type represents statistical significance. FEV₁: forced expiratory volume in 1 s; FVC: forced vital capacity. [#]: adjusted for child's sex; [¶]: additionally adjusted for maternal body mass index, education, birthplace/ethnic background, smoking during pregnancy and parity and child's breastfeeding; [†]: adjusted for child's sex and maternal energy intake. *: p<0.05; **: p<0.01.

cohort at a time, and mainly observed similar sizes and directions of the effect estimates (supplementary tables S7, S8a and S8b). Excluding only the intervention arm of the ROLO study did not materially change our results (results not shown).

Discussion

In this individual participant data meta-analysis among 18326 children from seven European birth cohorts, we observed that only a more pro-inflammatory diet during pregnancy was associated with a lower FVC in childhood. When studying the extremes, a very low maternal dietary quality was associated with a higher risk of preschool wheezing and a FEV₁/FVC below the LLN in the children, and borderline higher risk of school-age asthma.

Comparison with previous studies

To our best knowledge, our study is the first individual participant meta-analysis of prospective birth cohorts to examine the associations of the maternal E-DII score with child's respiratory outcomes. Previous studies showed that a higher E-DII score during pregnancy or in childhood was associated with a higher risk of early wheezing, wheezing trajectories or asthma, and a lower FEF_{25–75}, but not with other lung function measures or in high-risk children only [9, 10, 22]. Differences between results of these studies and our meta-analysis might be due to other definitions of respiratory outcomes. Asthma is difficult to diagnose in children aged <5 years, and the wheezing pathogenesis including the role of specific viruses in the development of a lower lung function and asthma might differ between age periods [23, 24]. Therefore, we used both preschool wheezing and school-age asthma as outcomes. The association of the E-DII with a lower FVC did not attenuate after additional adjustment for lower respiratory tract infections. However, further studies on the effect of the maternal E-DII score on harmonised longitudinal asthma-symptom phenotypes in the children are needed.

Our study showed no linear associations of the maternal DASH score with child's respiratory outcomes, but a very low-quality diet, defined by a very low DASH score capturing the intake of multiple food groups, was associated with a higher risk of wheezing and airway obstruction. A Mediterranean diet in pregnancy partly overlaps with the high DASH score diet (DASH diet) and has been associated with a lower risk of wheezing, whereas other dietary patterns, defined based on principal component analysis, were not associated with respiratory outcomes [25, 26]. The advantage of the DASH diet, as compared to these approaches, is that it might better reflect the dietary habits in a non-Mediterranean population and is easy to translate into public health guidelines [6].

Interpretation of the results

The E-DII score takes many food parameters into account, of which the main pro-inflammatory components are trans fat, saturated fat and cholesterol, and the main anti-inflammatory components are

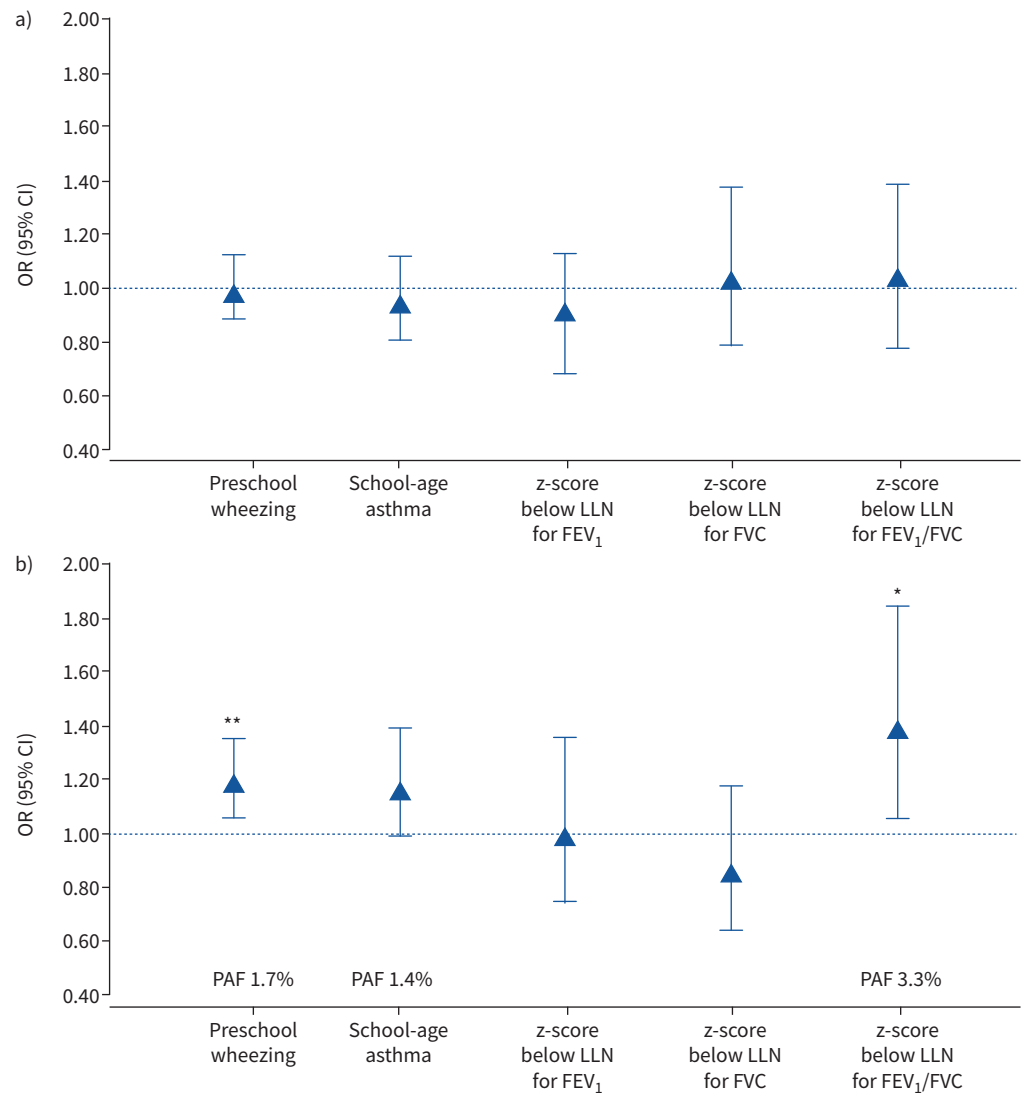


FIGURE 1 Associations of a) high energy-adjusted Dietary Inflammatory Index (E-DII) and b) low Dietary Approaches to Stop Hypertension (DASH) score in pregnancy with preschool wheezing and school-age asthma and lung function. Values are derived from multilevel logistic regression models and reflect odds ratios or changes in z-scores with 95% confidence intervals as compared to the reference group (≤ 90 th percentile for the E-DII score and ≥ 10 th percentile for the DASH score). The population attributable risk fractions (PAFs) indicate the proportion of preschool wheezing, school-age asthma or forced expiratory volume in 1 s (FEV₁)/forced vital capacity (FVC) below the lower limit of normal (LLN) attributable to a low DASH score. LLN is defined as z-score for lung function outcome < 1.64 . The models are adjusted for maternal body mass index, education, birthplace/ethnic background, smoking during pregnancy and parity, and child's sex and breastfeeding, and the models with DASH as exposure are additionally adjusted for maternal energy intake. *: $p < 0.05$; **: $p < 0.01$.

nutrients derived from fruits and vegetables and n-3 fatty acids [7]. Underlying mechanisms might be that a high-fat maternal diet leads to fetal lung inflammation and remodelling, which could make the lungs more susceptible to developing asthma later in childhood [27]. Obesity is another factor that is associated with inflammation [28], and this might be the reason why the associations with wheezing and asthma attenuated after adjustment for lifestyle factors including maternal BMI. In addition, an indirect effect through early growth factors may play a role in the association of the maternal E-DII score with child's FVC as shown by the moderate percentage of change of the effect estimates [29]. However, the effect of the association of the maternal E-DII score with child's FVC was small, and might therefore reflect a subclinical change or chance finding.

A DASH diet is mainly characterised by a high intake of fruits and vegetables, which are rich in antioxidants, and a low intake of added sugars and sodium [13]. Antioxidants might make the lungs less vulnerable to oxidative stress, and thereby may reduce the risk of asthma and airway obstruction [30]. The DASH diet has also been shown to lower blood pressure [31]. A higher blood pressure in pregnancy, which might reflect poorer vascular health, has been associated with a higher risk of wheezing and asthma and a lower FEV₁/FVC in children [32, 33]. We only observed in our explorative analyses that a very low DASH score was associated with a higher risk of preschool wheezing, airway obstruction and borderline with asthma. However, we were not able to take the DASH score of child's current diet into consideration. Additionally, the effect of maternal diet on child's respiratory outcomes may differ between different periods of pregnancy. Since lung development already starts in the fourth week of pregnancy, adverse exposures in early pregnancy are considered to be specifically important for lung disease development later in life [14]. Further research is needed to understand the effect of maternal diet at different gestational ages during pregnancy and in different periods of early life after birth on lung development across the life course.

Although previous studies showed that high maternal intake of single nutrients including vitamin D and n-3 fatty acids may be beneficial for child's respiratory health [34, 35], we observed no consistent association of the maternal E-DII or DASH score with respiratory outcomes. This suggests that specific supplements may have greater importance than a balanced diet for asthma development.

The moderate correlation between the E-DII and DASH scores suggest that these scores partly represent different factors of the diet. The scores differ in concept as the E-DII is mainly nutrient based and focuses on the inflammatory effects of the diet, whereas the DASH score defines the overall quality of the diet based on food components. Our hypothesis for the effect of maternal diet on child's respiratory outcomes was based on a population with an extremely adverse diet [4]. The distribution of maternal diet during pregnancy in Western countries might be within optimal ranges, and any potential adverse effect might lay in the extremes. Therefore, we studied the extremes by using a common epidemiological cut-off approach, the highest and lowest 10th percentiles, since clinical cut-offs are lacking. Categorisation is prone to bias and our analyses are explorative and should be considered as hypothesis-generating. Therefore, results suggesting that the associations of an adverse diet with clinically relevant respiratory outcomes only exist in those exposed to an extremely adverse diet should be carefully interpreted. In addition, if we assume that these relationships are causal, the average proportions of wheezing, asthma and an FEV₁/FVC below the LLN attributable to a low DASH are tenuous. Targeting maternal diet, in addition to other lifestyle and sociodemographic factors, to improve child's respiratory outcomes could be the subject for future intervention trials, but in a population of mothers with an extremely adverse diet only.

Strengths and limitations

A major strength of this meta-analysis is the use of individual participant data. This resulted in a large sample size and enabled us to harmonise the data, and to reduce the risk of publication bias. However, some limitations do apply. First, dietary scores as well as wheezing and asthma were defined based on questionnaires, which could have led to reporting errors. In addition, FFQs may not adequately assess the intake of specific nutrients, such as sodium, a component of the DASH score or the specific food parameters for the E-DII score. Furthermore, missing data in the FFQs might have biased the estimation of the dietary scores. Clearly, we cannot know the effect of foods eaten that are not on the FFQ. Nevertheless, most cohorts used validated questionnaires [13, 15]. Second, although the dietary scores were calculated in all cohorts according to the same methods, there were differences in the included food parameters, length and content of the FFQs, assessed time periods in pregnancy and assessment years. However, two-stage meta-analyses gave similar results and showed limited heterogeneity between the cohort estimates. Although none of the cohorts had information on all 44 possible parameters for the E-DII score, a previous validation study showed that an DII score based on 28 parameters had a good predictive ability, and an additional study showed that a score based on 17 parameters was related to inflammatory markers [36, 37]. Thus, our E-DII score gives a valid, if imprecise, estimation of the inflammatory potential of the diet. We were not able to take potential changes in a mother's diet due to seasonal variation or food aversions into consideration, and we did not have information for all cohorts on the exact gestational age at which diet was assessed. However, FFQs are considered an adequate method to measure the usual dietary intake over an extensive period of time, and dietary patterns are suggested not to change much during pregnancy [38, 39]. Thus, our dietary measurements across cohorts were appropriate and support our findings. Third, although the participating cohorts were carefully selected based on *a priori* power calculations, data availability, and spread throughout Europe, most participants come from two cohorts and have a European birthplace/ethnic background. Therefore, results may not be generalisable to mothers in other geographical regions. Fourth, we did not measure changes in the associations of maternal

diet with child's respiratory outcomes over time. Fifth, to date, no validated method to calculate child's DASH score is available. Although results remained similar after adjustment for child's BMI, potential mediating effect of child's DASH score cannot be fully ruled out. Last, we adjusted for major potential confounders, but, as in all observational studies, residual confounding due to unmeasured or insufficiently harmonised factors, such as other sociodemographic factors, environmental pollution, the use of supplements or medication in pregnancy or the duration of breastfeeding remains an issue. Future randomised controlled intervention trials might minimise the risk of confounding factors influencing the results, but should be carefully considered given the absence of a consistent association in our current study.

Conclusion

A more pro-inflammatory diet of mothers during pregnancy was only related to a lower FVC in childhood. Both the inflammatory potential and quality of the diet were not consistently related to wheezing or asthma in childhood. The main results from this individual participant data meta-analysis do not support the hypothesis that maternal pro-inflammatory or low-quality diet in pregnancy are related to respiratory diseases in childhood.

Acknowledgements: *ALPHABET:* Authors acknowledge all investigators working on the JPI-HDHL (<http://www.healthydietforhealthylife.eu>) ALPHABET project and are grateful to all the participating families in England, France, the Netherlands, Poland and Republic of Ireland, who take part in this ongoing cohort study. *ALSPAC:* We are extremely grateful to all the families who took part in this study, the midwives for their help in recruiting them, and the whole ALSPAC team, which includes interviewers, computer and laboratory technicians, clerical workers, research scientists, volunteers, managers, receptionists and nurses. Please note that the ALSPAC study website contains details of all the data that is available through a fully searchable data dictionary and variable search tool (<http://www.bristol.ac.uk/alspac/researchers/our-data/>). *EDEN:* The authors thank the EDEN mother-child cohort study group, whose members are I. Annesi-Maesano, J.Y. Bernard, J. Botton, M.A. Charles, P. Dargent-Molina, B. de Lauzon-Guillain, P. Ducimetière, M. de Agostini, B. Foliguet, A. Forhan, X. Fritel, A. Germa, V. Goua, R. Hankard, B. Heude, M. Kaminski, B. Larroquet, N. Lelong, J. Lepeule, G. Magnin, L. Marchand, C. Nabet, F. Pierre, R. Slama, M.J. Saurel-Cubizolles, M. Schweitzer, and O. Thiebaugeorges. *Generation R:* The Generation R Study is conducted by the Erasmus Medical Centre in close collaboration with the School of Law and the Faculty of Social Sciences at the Erasmus University, Rotterdam, the Municipal Health Service, Rotterdam area, and the Stichting Trombosedienst and Artsenlaboratorium Rijnmond (Star-MDC), Rotterdam. We gratefully acknowledge the contribution of children and their parents, general practitioners, hospitals, midwives and pharmacies in Rotterdam. *Lifeways:* We would like to thank all members of the Lifeways cohort for their valuable contribution to the study. The participation of families is much appreciated. *REPRO_PL:* We gratefully acknowledge the contribution of children and their parents, hospitals, physicians, and midwives. *ROLO:* We are grateful to the participating mothers, children, and to the research and clinical staff who enabled us recruit this pregnancy and birth cohort. *SWS:* We are grateful to the women of Southampton and their children, who gave their time to take part in this study, and to the research nurses and other staff who collected and processed the data.

Author contributions: S.M. Mensink-Bout, E.R. van Meel, V.W.V. Jaddoe and L. Duijts contributed to the conception and design, acquisition of data, analyses and interpretation of the data, drafted the article, revised it critically for important intellectual content, and gave final approval of the version to be published. J.C. de Jongste, I. Annesi-Maesano, A.M. Aubert, J.Y. Bernard, L-W. Chen, C. Cooper, S.R. Crozier, W. Hanke, N.C. Harvey, J.R. Hébert, B. Heude, J. Jerzynska, C.C. Kelleher, J. Mehegan, F.M. McAuliffe, C.M. Phillips, K. Polanska, C.L. Relton, N. Shivappa and M. Suderman contributed to the conception and design, acquisition of local data, revised the drafted manuscript critically for important intellectual content, and gave final approval of the version to be published. This publication is the work of the authors and M. Suderman will serve as guarantor for the contents of this paper.

Conflict of interest: S.M. Mensink-Bout has nothing to disclose. E.R. van Meel has nothing to disclose. J.C. de Jongste has nothing to disclose. I. Annesi-Maesano has nothing to disclose. A.M. Aubert has nothing to disclose. J.Y. Bernard has nothing to disclose. L-W. Chen has nothing to disclose. C. Cooper reports personal fees from Alliance for Better Bone Health, Amgen, Eli Lilly, GSK, Medtronic, Merck, Novartis, Pfizer, Roche, Servier, Takeda and UCB. S.R. Crozier has nothing to disclose. W. Hanke has nothing to disclose. N.C. Harvey has nothing to disclose. J.R. Hébert reports grants and other from Connecting Health Innovations LLC (CHI), outside the submitted work; and has IP protection *via* federally registered trademark for the DII with royalties paid to CHI; the subject matter of this paper will not have any direct bearing on that work, nor has that activity exerted any influence on this project. B. Heude has nothing to disclose. J. Jerzynska has nothing to disclose. C.C. Kelleher has

nothing to disclose. J. Mehegan has nothing to disclose. F.M. McAuliffe has nothing to disclose. C.M. Phillips has nothing to disclose. K. Polanska has nothing to disclose. C.L. Relton has nothing to disclose. N. Shivappa is an employee of Connecting Health Innovations LLC; the subject matter of this paper will not have any direct bearing on that work, nor has that activity exerted any influence on this project. M. Suderman has nothing to disclose. V.W. V. Jaddoe has nothing to disclose. L. Duijts reports grants from European Union's Horizon 2020 research and innovation programme, and grants from European Union's Horizon 2020 co-funded programme ERA-Net on Biomarkers for Nutrition and Health (ERA HDHL) and ZonMW, during the conduct of the study.

Support statement: *ALPHABET*: This work was supported by an award from the European Union's Horizon 2020 research and innovation programme under the ERA-Net Cofund of the Joint Programming Initiative Healthy Diet for Healthy Life (JPI-HDHL) (<http://www.healthydietforhealthylife.eu>) action number 696295 (Biomarkers for Nutrition and Health). Co-funding was provided by Science Foundation Ireland, Ireland (grant number SFI/16/ERA-HDHL/3360), the UK Biotechnology and Biological Sciences Research Council (ERA-HDHL Biomarkers: BBSRC: BB/P028179/1 and BB/P028187/1), the Polish National Centre for Research and Development (ERA-HDHL/01/ALPHABET/1/2017), ZonMW The Netherlands (number 529051014; 2017), ALPHABET project (number 696295; 2017), and the French National Agency of Research (reference AnrR16227KK). *ALSPAC*: The UK Medical Research Council and Wellcome (grant ref: 102215/2/13/2) and the University of Bristol provide core support for ALSPAC. *EDEN*: The EDEN study was supported by Foundation for Medical Research (FRM), National Agency for Research (ANR), National Institute for Research in Public health (IRESP: TGIR cohorte santé 2008 programme), French Ministry of Health (DGS), French Ministry of Research, INSERM Bone and Joint Diseases National Research (PRO-A) and Human Nutrition National Research Programs, Paris-Sud University, Nestlé, French National Institute for Population Health Surveillance (InVS), French National Institute for Health Education (INPES), the European Union FP7 programmes (FP7/2007–2013, HELIX, ESCAPE, ENRIECO, Medall projects), Diabetes National Research Program (through a collaboration with the French Association of Diabetic Patients (AFD)), French Agency for Environmental Health Safety (now ANSES), Mutuelle Générale de l'Education Nationale complementary health insurance (MGEN), French national agency for food security, French-speaking association for the study of diabetes and metabolism (ALFEDIAM). *Generation R*: The Generation R Study is made possible by financial support from the Erasmus Medical Centre, Rotterdam, the Erasmus University Rotterdam and The Netherlands Organization for Health Research and Development. This project received funding for projects from the European Union's Horizon 2020 research and innovation programme (LIFECYCLE, grant agreement number 733206, 2016; EUCAN-Connect grant agreement number 824989; ATHLETE, grant agreement number 874583). *Lifeways*: The Lifeways Cross-Generation Cohort Study is funded by the Irish Health Research Board (reference HRC/2007/13). *REPRO_PL*: The REPRO_PL cohort was mainly supported by the Ministry of Science and Higher Education, Poland (PBZ-MEIN-/8/2//2006; contract number K140/P01/2007/1.3.1.1); by the grant PNRF-218-AI-1/07 from Norway through the Norwegian Financial Mechanism within the Polish-Norwegian Research Fund, National Science Centre under the call JPI HDHL Nutrition and Cognitive Function (2015/17/Z/NZ7/04273), and National Science Centre, Poland (DEC-2014/15/B/NZ7/00998). *ROLO*: The ROLO study is supported by Health Research Board Health Research Centre for Diet and Health Research Ireland and The National Maternity Hospital Medical Fund, and The European Union's Seventh Framework Programme (FP7/2007–2013). *SWS*: This work was supported by grants from the Medical Research Council, British Heart Foundation, Arthritis Research UK, Food Standards Agency, and the European Union's Seventh Framework (FP7/2007–2013), projects EarlyNutrition and ODIN under grant agreement numbers 289346 and 613977. The study sponsors had no role in the study design, data analysis, interpretation of data or writing of this report. Funding information for this article has been deposited with the Crossref Funder Registry.

References

- 1 Asher MI, Montefort S, Björkstén B, *et al.* Worldwide time trends in the prevalence of symptoms of asthma, allergic rhinoconjunctivitis, and eczema in childhood: ISAAC phases one and three repeat multicountry cross-sectional surveys. *Lancet* 2006; 368: 733–743.
- 2 Bui DS, Lodge CJ, Burgess JA, *et al.* Childhood predictors of lung function trajectories and future COPD risk: a prospective cohort study from the first to the sixth decade of life. *Lancet Respir Med* 2018; 6: 535–544.
- 3 Devereux G, Seaton A. Diet as a risk factor for atopy and asthma. *J Allergy Clin Immunol* 2005; 115: 1109–1117.
- 4 Lopuhaä CE, Roseboom TJ, Osmond C, *et al.* Atopy, lung function, and obstructive airways disease after prenatal exposure to famine. *Thorax* 2000; 55: 555–561.
- 5 Beckhaus AA, Garcia-Marcos L, Forno E, *et al.* Maternal nutrition during pregnancy and risk of asthma, wheeze, and atopic diseases during childhood: a systematic review and meta-analysis. *Allergy* 2015; 70: 1588–1604.
- 6 Hu FB. Dietary pattern analysis: a new direction in nutritional epidemiology. *Curr Opin Lipidol* 2002; 13: 3–9.
- 7 Shivappa N, Steck SE, Hurley TG, *et al.* Designing and developing a literature-derived, population-based dietary inflammatory index. *Public Health Nutr* 2014; 17: 1689–1696.

- 8 Fung TT, Rimm EB, Spiegelman D, *et al.* Association between dietary patterns and plasma biomarkers of obesity and cardiovascular disease risk. *Am J Clin Nutr* 2001; 73: 61–67.
- 9 Hanson C, Rifas-Shiman SL, Shivappa N, *et al.* Associations of prenatal dietary inflammatory potential with childhood respiratory outcomes in Project Viva. *J Allergy Clin Immunol Pract* 2020; 8: 945–952.
- 10 Chen LW, Lyons B, Navarro P, *et al.* Maternal dietary inflammatory potential and quality are associated with offspring asthma risk over 10-year follow-up: the Lifeways Cross-Generation Cohort Study. *Am J Clin Nutr* 2020; 111: 440–447.
- 11 Ma J, Strub P, Lv N, *et al.* Pilot randomised trial of a healthy eating behavioural intervention in uncontrolled asthma. *Eur Respir J* 2016; 47: 122–132.
- 12 Phillips CM, Chen LW, Heude B, *et al.* Dietary inflammatory index and non-communicable disease risk: a narrative review. *Nutrients* 2019; 11: 1873.
- 13 Aubert AM, Forhan A, de Lauzon-Guillain B, *et al.* Deriving the Dietary Approaches to Stop Hypertension (DASH) score in women from seven pregnancy cohorts from the European ALPHABET consortium. *Nutrients* 2019; 11: 2706.
- 14 Mullasery D, Smith NP. Lung development. *Semin Pediatr Surg* 2015; 24: 152–155.
- 15 Asher MI, Keil U, Anderson HR, *et al.* International Study of Asthma and Allergies in Childhood (ISAAC): rationale and methods. *Eur Respir J* 1995; 8: 483–491.
- 16 Sonnenschein-van der Voort AM, Arends LR, de Jongste JC, *et al.* Preterm birth, infant weight gain, and childhood asthma risk: a meta-analysis of 147,000 European children. *J Allergy Clin Immunol* 2014; 133: 1317–1329.
- 17 Miller MR, Hankinson J, Brusasco V, *et al.* Standardisation of spirometry. *Eur Respir J* 2005; 26: 319–338.
- 18 Quanjer PH, Stanojevic S, Cole TJ, *et al.* Multi-ethnic reference values for spirometry for the 3–95-yr age range: the global lung function 2012 equations. *Eur Respir J* 2012; 40: 1324–1343.
- 19 Debray TP, Moons KG, Abo-Zaid GM, *et al.* Individual participant data meta-analysis for a binary outcome: one-stage or two-stage? *PLoS One* 2013; 8: e60650.
- 20 Flegal KM, Graubard BI, Williamson DF. Methods of calculating deaths attributable to obesity. *Am J Epidemiol* 2004; 160: 331–338.
- 21 Rothman KJ. No adjustments are needed for multiple comparisons. *Epidemiology* 1990; 1: 43–46.
- 22 Han YY, Forno E, Shivappa N, *et al.* The Dietary Inflammatory Index and current wheeze among children and adults in the United States. *J Allergy Clin Immunol Pract* 2018; 6: 834–841.
- 23 Martinez FD, Wright AL, Taussig LM, *et al.* Asthma and wheezing in the first six years of life. *N Engl J Med* 1995; 332: 133–138.
- 24 van Meel ER, den Dekker HT, Elbert NJ, *et al.* A population-based prospective cohort study examining the influence of early-life respiratory tract infections on school-age lung function and asthma. *Thorax* 2018; 73: 167–173.
- 25 Shaheen SO, Northstone K, Newson RB, *et al.* Dietary patterns in pregnancy and respiratory and atopic outcomes in childhood. *Thorax* 2009; 64: 411–417.
- 26 Chatzi L, Torrent M, Romieu I, *et al.* Mediterranean diet in pregnancy is protective for wheeze and atopy in childhood. *Thorax* 2008; 63: 507–513.
- 27 Heyob KM, Mieth S, Sugar SS, *et al.* Maternal high-fat diet alters lung development and function in the offspring. *Am J Physiol Lung Cell Mol Physiol* 2019; 317: L167–L174.
- 28 Timpson NJ, Nordestgaard BG, Harbord RM, *et al.* C-reactive protein levels and body mass index: elucidating direction of causation through reciprocal Mendelian randomization. *Int J Obes* 2011; 35: 300–308.
- 29 Sen S, Rifas-Shiman SL, Shivappa N, *et al.* Dietary inflammatory potential during pregnancy is associated with lower fetal growth and breastfeeding failure: results from Project Viva. *J Nutr* 2016; 146: 728–736.
- 30 Caramori G, Papi A. Oxidants and asthma. *Thorax* 2004; 59: 170–173.
- 31 Appel LJ, Moore TJ, Obarzanek E, *et al.* A clinical trial of the effects of dietary patterns on blood pressure. *N Engl J Med* 1997; 336: 1117–1124.
- 32 Tang JR, Karumanchi SA, Seedorf G, *et al.* Excess soluble vascular endothelial growth factor receptor-1 in amniotic fluid impairs lung growth in rats: linking preeclampsia with bronchopulmonary dysplasia. *Am J Physiol Lung Cell Mol Physiol* 2012; 302: L36–L46.
- 33 Wilkink FA, den Dekker HT, de Jongste JC, *et al.* Maternal blood pressure and hypertensive disorders during pregnancy and childhood respiratory morbidity: the Generation R Study. *Eur Respir J* 2018; 52: 1800378.
- 34 Bisgaard H, Stokholm J, Chawes BL, *et al.* Fish oil-derived fatty acids in pregnancy and wheeze and asthma in offspring. *N Engl J Med* 2016; 375: 2530–2539.
- 35 Wolsk HM, Chawes BL, Litonjua AA, *et al.* Prenatal vitamin D supplementation reduces risk of asthma/recurrent wheeze in early childhood: a combined analysis of two randomized controlled trials. *PLoS One* 2017; 12: e0186657.
- 36 Shivappa N, Steck SE, Hurley TG, *et al.* A population-based dietary inflammatory index predicts levels of C-reactive protein in the Seasonal Variation of Blood Cholesterol Study (SEASONS). *Public Health Nutr* 2014; 17: 1825–1833.

- 37 Shivappa N, Hébert JR, Rietzschel ER, *et al.* Associations between dietary inflammatory index and inflammatory markers in the Asklepios Study. *Br J Nutr* 2015; 113: 665–671.
- 38 Willett W. Nutritional epidemiology: issues and challenges. *Int J Epidemiol* 1987; 16: 312–317.
- 39 Crozier SR, Robinson SM, Godfrey KM, *et al.* Women’s dietary patterns change little from before to during pregnancy. *J Nutr* 2009; 139: 1956–1963.