



HAL
open science

Using species distribution models only may underestimate climate change impacts on future marine biodiversity

Fabien Moullec, Nicolas Barrier, Sabrine Drira, Francois Guilhaumon, Tarek Hattab, Myron A. Peck, Yunne-Jai Shin

► To cite this version:

Fabien Moullec, Nicolas Barrier, Sabrine Drira, Francois Guilhaumon, Tarek Hattab, et al.. Using species distribution models only may underestimate climate change impacts on future marine biodiversity. *Ecological Modelling*, 2022, 464, pp.109826. 10.1016/j.ecolmodel.2021.109826 . hal-03566639

HAL Id: hal-03566639

<https://hal.umontpellier.fr/hal-03566639>

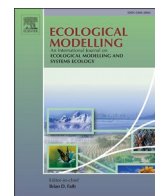
Submitted on 3 Jun 2022

HAL is a multi-disciplinary open access archive for the deposit and dissemination of scientific research documents, whether they are published or not. The documents may come from teaching and research institutions in France or abroad, or from public or private research centers.

L'archive ouverte pluridisciplinaire **HAL**, est destinée au dépôt et à la diffusion de documents scientifiques de niveau recherche, publiés ou non, émanant des établissements d'enseignement et de recherche français ou étrangers, des laboratoires publics ou privés.



Distributed under a Creative Commons Attribution 4.0 International License



Using species distribution models only may underestimate climate change impacts on future marine biodiversity

Fabien Moulec^{1,2,3,*}, Nicolas Barrier⁴, Sabine Drira⁴, François Guilhaumon^{3,5}, Tarek Hattab⁴, Myron A. Peck¹, Yunne-Jai Shin^{3,6}

¹ Department of Coastal Systems, Royal Netherlands Institute for Sea Research, P.O. Box 59, 1790 AB Den Burg, Texel, The Netherlands

² Institute for Marine Ecosystem and Fisheries Science (IFM), Center for Earth System Research and Sustainability, (CEN), University of Hamburg, Große Elbstrasse 133, 22767 Hamburg, Germany

³ MARBEC, Univ Montpellier, IRD, CNRS, Ifremer, Montpellier, France

⁴ MARBEC, Univ Montpellier, Ifremer, IRD, CNRS, Sète, France

⁵ IRD, La Réunion, France

⁶ Marine Research (MA-RE) Institute and Department of Biological Sciences, University of Cape Town, Private Bag X3, Rondebosch 7701, South Africa

ARTICLE INFO

Keywords:

Beta diversity
Climate change
End-to-end model
Osmose model
Species distribution model
Mediterranean sea

ABSTRACT

In face of global changes, projecting and mapping biodiversity changes are of critical importance to support management and conservation measures of marine ecosystems. Despite the development of a wide variety of ecosystem models capable of integrating an increasing number of ecological processes, most projections of climate-induced changes in marine biodiversity are based on species distribution models (SDMs). These correlative models present a significant advantage when the lack of knowledge on the species physiology is counterbalanced by the availability of relevant environmental variables over the species geographical range. However, correlative SDMs neglect intra- and inter-specific interactions and thereby can lead to biased projections of changes in biodiversity distribution. To evaluate the influence of trophic interactions on projections of species richness and assemblage composition under climate change scenarios, we compared biodiversity projections derived from an ensemble of different SDMs to projections derived from a hybrid model coupling SDMs and a multispecies trophic model in the Mediterranean Sea. Our results show that accounting for trophic interactions modifies projections of future biodiversity in the Mediterranean Sea. Under the RCP8.5 scenario, SDMs tended to overestimate the gains and underestimate the losses of species richness by the end of the 21st century, with marked local differences in projections, both in terms of magnitude and trend, in some biodiversity hotspots. In both SDMs and hybrid approaches, nestedness with gains in species richness was the main pattern driving dissimilarity between present and future fish and macro-invertebrate species assemblages at the Mediterranean basin scale. However, at local scale, we highlighted some differences in the relative contribution of nestedness vs replacement in driving dissimilarity. Our results call for the development of integrated modelling tools that can mechanistically consider multiple biotic and abiotic drivers to improve projections of future marine biodiversity.

1. Introduction

Given the ongoing growth of human population, anthropogenic pressures on ecosystems such as exploitation, pollution, habitat fragmentation and loss, and biological invasions are expected to intensify in the future, especially in a business-as-usual scenario (Bellard et al., 2012; Leadley et al., 2010; Shin et al., 2019; Steffen et al., 2018). Associated with climate change, such pressures are expected to

exacerbate the deleterious impacts already observed on world's ecosystems with potentially dramatic cascading consequences for human societies (Bindoff et al., 2019; Díaz et al., 2019; Doney et al., 2012; Lotze et al., 2019; Serpetti et al., 2017; Thiault et al., 2019; Tittensor et al., 2019). Climate-induced changes on marine ecosystems have been accelerating at such a rapid pace that they may dominate impacts resulting from other drivers of change in the coming decades (Cheng et al., 2019; IPCC, 2019; Pinsky et al., 2019). In response to climate

* Correspondence: Fabien Moulec

E-mail address: fabien.moulec@nioz.nl (F. Moulec).

<https://doi.org/10.1016/j.ecolmodel.2021.109826>

Received 5 July 2021; Received in revised form 5 October 2021; Accepted 8 November 2021

Available online 17 November 2021

0304-3800/© 2021 The Author(s). Published by Elsevier B.V. This is an open access article under the CC BY license (<http://creativecommons.org/licenses/by/4.0/>).

change, species adapt, shift their geographical range or face local extinction, this causes substantial changes in species composition, abundance and biotic interactions (e.g., trophic interactions) and leads to profound reshuffles of marine ecosystem structure and functioning (Blowes et al., 2019; Bryndum-Buchholz et al., 2019; Du Pontavice et al., 2019; Pereira et al., 2010; Román-Palacios and Wiens, 2020). Fish and other marine species have already altered their geographical distributions to stay within suitable environmental conditions (Lenoir et al., 2020), and these shifts will likely continue or accelerate in the future (Baudron et al., 2020; Cheung et al., 2009, 2016; García Molinos et al., 2016; Pecl et al., 2017; Pinsky et al., 2020; Poloczanska et al., 2013). It is, therefore, critical to develop our capacity to project and map biodiversity changes to support management and conservation measures of marine ecosystems (Bellard et al., 2012; IPBES, 2016; Parmesan et al., 2011), a major challenge for the mitigation of current biodiversity losses and the achievement of the United Nation's Sustainable Development Goal 14 (Pinsky et al., 2018; Singh et al., 2019).

Despite the development of increasingly sophisticated models that are able to integrate an increasing number of ecological processes, a majority - 64% according to the recent global assessment of the Inter-governmental Science-Policy Platform on Biodiversity and Ecosystem Services (IPBES) - of global and regional scale scenarios of climate-induced changes in marine biodiversity rely solely on correlative approaches (Gavish et al., 2017; IPBES, 2019). Such approaches, based on the ecological niche conceptualised by Hutchinson (1957) and commonly named Species Distribution Models (SDMs) or Environmental niche models (ENMs), are empirical statistical models relating species distribution data (occurrences or abundances) to a set of environmental descriptors to predict where a species is likely to be present in unsampled locations or time periods (see Guisan and Thuiller 2005 or Elith and Leathwick 2009 for a review). SDMs have become very popular to project past, present and future diversity distributions under various climate change scenarios (Bellard et al., 2012; Gavish et al., 2017; Guisan and Thuiller, 2005). The development of ready-to-use and generic software has greatly contributed to the widespread use of SDMs in ecology (e.g., Biomod R package (Thuiller et al., 2009, 2016), as well as the accessibility to global occurrence datasets for an increasing number of taxa. With the growing number of studies involving the use of SDMs, however, came a growing recognition of their limitations in projecting future distributions under new environmental conditions (Araújo and Luoto, 2007; Davis et al., 1998; Dormann, 2007; Elith and Leathwick, 2009; Heikkinen et al., 2006; Hof et al., 2012; Morin and Lechowicz, 2008). In particular, and even though observed presence-absence data result from complex processes, SDMs do not explicitly consider key ecological processes such as species interactions (e.g., predation, competition, mutualism or facilitation), adaptation (e.g., phenotypic plasticity), or population dynamics which greatly influence the distribution of species at local to global scales (Araújo et al., 2014; Araújo and Luoto, 2007; Elith and Leathwick, 2009; Giannini et al., 2013; Guisan and Thuiller, 2005; Lavergne et al., 2010; Palacio and Girini, 2018; Wisz et al., 2013). De facto, by ignoring biotic interactions and most often relying on presence-absence data rather than abundance data, SDMs may under- or overestimate the number of species that can coexist at a given location, time and environmental condition, and thus lead to distorted spatial projections of future biodiversity (Engelhardt et al., 2020; Gavish et al., 2017; Gilman et al., 2010; Urban et al., 2013). While the role of biotic interactions, population dynamics and life history processes in shaping distributions and species assemblages is well recognized, very few studies and essentially all in the terrestrial realm, have attempted to investigate the effects of considering biotic interactions on projections of climate change effects on species richness and community composition (Araújo and Luoto, 2007; Hof et al., 2012; Kissling et al., 2010). So far, the inclusion of biotic interactions (e.g., using patterns of species co-occurrence (Wisz et al., 2013)) has been shown to affect SDMs' performance but we still lack an understanding of how such interactions, when explicitly

considered in the modelling of species distributions, will alter projections of biodiversity distribution under climate change. In addition, when biotic interactions were considered, they were, in most cases, assumed to be static in time and space, an assumption often unverified in Nature (Davis et al., 1998; Klanderud and Totland, 2005).

The Mediterranean Sea is rare in that it is both a biodiversity and global change hotspot (Coll et al., 2012, 2010; Cramer et al., 2018; Giorgi, 2006; Soto-Navarro et al., 2020). Several studies have projected that fish, invertebrates and zoo- and phyto-plankton species will shift their distribution under climate change leading to local changes in species richness and composition, alterations in food web structure and decreases in functional and phylogenetic diversity (Ben Rais Lasram and Moullot 2009; Ben Rais Lasram et al. 2010; (Albouy et al., 2012, 2015a, a,b; Hattab et al., 2016; Benedetti et al., 2018, 2019). These studies, however, invariably relied on environmental niche modelling that either overlooked intra- and inter-specific interactions or considered trophic links and food web structure emerging from SDM projections of co-occurrence and not from climate-driven processes driving individual species distributions and dynamics (Albouy et al., 2014b; Hattab et al., 2016).

In this study, we evaluated and quantified the influence of considering trophic interactions on changes in species richness and assemblage composition under climate change by comparing biodiversity projections (α and β diversities) derived from an ensemble of SDMs and those from a hybrid model coupling SDMs and a multispecies trophic model in the Mediterranean Sea, under the "no mitigation" climate change scenario (RCP8.5). We used a new hybrid model, OSMOSE-MED, which allows to represent the spatial dynamics of interacting marine fishes and macroinvertebrates in the Mediterranean Sea (Moulléc et al., 2019a, 2019b), including key life history processes such as growth, reproduction and mortality.

2. Materials and methods

We used SDMs to estimate present-day (2006–2013) and future (2071–2100) climatic suitability (here after called species distributions) of one hundred species currently inhabiting the Mediterranean Sea (Appendix A1 in Supplementary data) under the high emission, "no mitigation policy" IPCC Representative Concentration Pathway (RCP) 8.5 scenario. The distribution maps produced by the SDMs were then used to force the spatial distribution of species within the OSMOSE-MED hybrid model (Fig. 1). As the development and calibration of SDMs and OSMOSE-MED hybrid model are fully described in Moulléc et al. (2019b) and Moulléc et al. (2019a), only a brief presentation of the models is given here.

2.1. Species distribution modelling

The spatial occurrence data of each species were compiled and merged from multiple databases: the Global Biodiversity Information System (GBIF), the Ocean Biogeographic Information System (OBIS), the Food and Agriculture Organization's Geonetwork portal (www.fao.org/geonetwork) and the FishMed database (Albouy et al., 2015a). Only occurrences recorded since 1975 were kept. Decadal climatologies of temperature and salinity within 40 depth layers were used to generate predictor variables used to calibrate SDMs. These data were extracted from the global World Ocean Database 2013 Version 2 at a spatial resolution of $1/4^\circ$ and were then interpolated by bilinear methods on a $1/12$ th (ca. 7 km in the Mediterranean Sea) grid. In order to take into account environment experienced by differences in the vertical distribution of species in the water column, six environmental metrics were derived from temperature and salinity climatologies from 1975 to 2012: average sea surface temperature and salinity (0–50 m depth), average vertical temperature and salinity (0–200 m depth), and average sea bottom temperature and salinity (bottom 50 m depth). We used temperature and salinity to calibrate SDMs (i.e., environmental niche

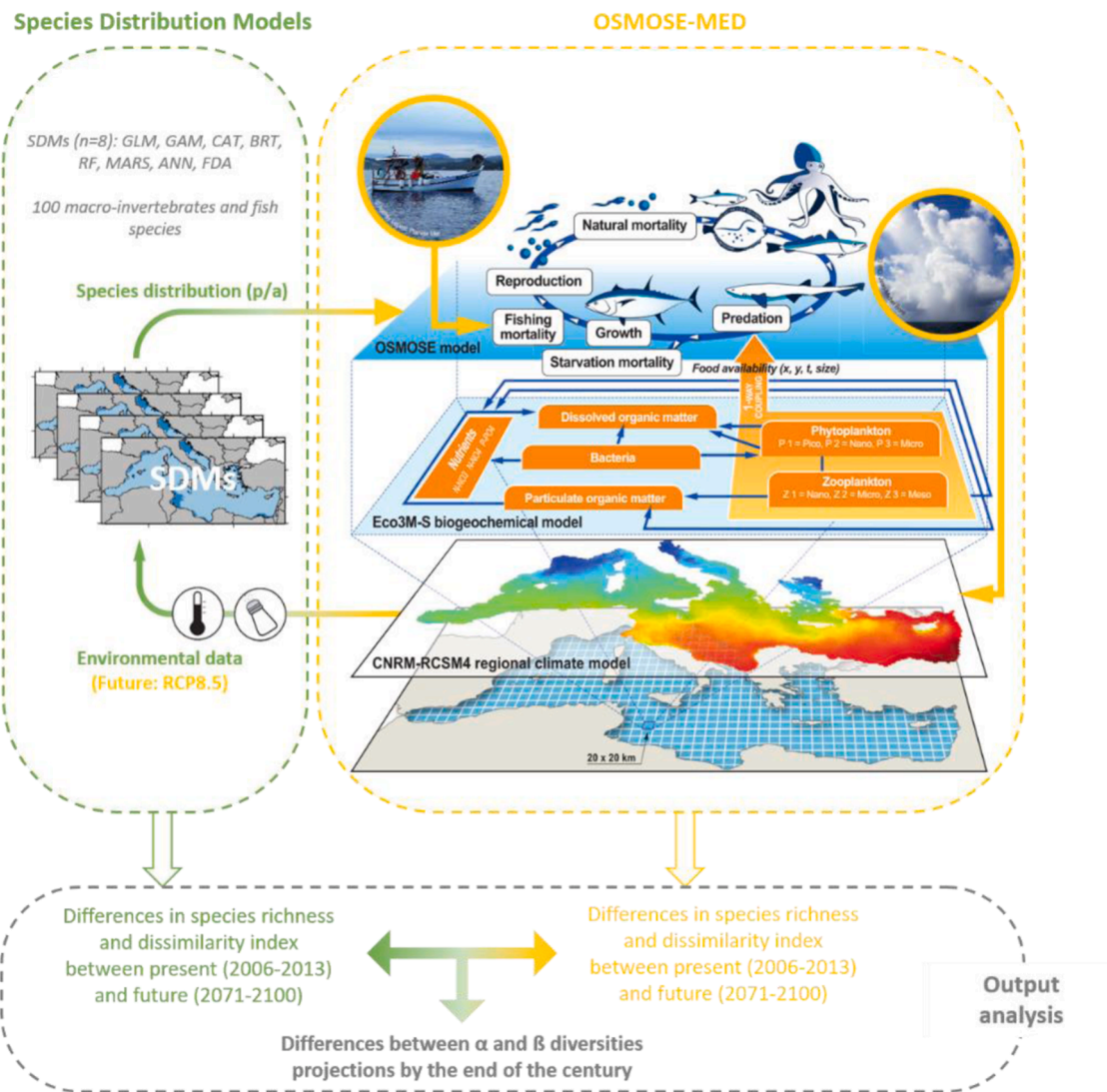


Fig. 1. Conceptual representation of the modelling and analytical frameworks adopted in the study. Species distribution models (SDMs) were independently calibrated for one hundred marine species and derived species binary maps (presence/absence; p/a) were used as inputs to drive species spatial distributions in the food web model OSMOSE. Future environmental data (temperature and salinity climatologies under RCP8.5 scenario) used to project future species distributions were derived from the CNRM-RCSM4 model. CNRM-RCSM4 drove the Eco3M-S biogeochemical model, its outputs (planktonic biomass) serving as potential prey field for species in OSMOSE. Changes in species richness and composition were calculated between the present period (2006–2013) and the end of the 21st century (2071–2100) using outputs from both modelling approaches. Differences between projections were then compared.

models) as these climatic variables are typically the major factors determining large-scale patterns of species distribution and are commonly used as explanatory variables in SDMs in the Mediterranean Sea and across the world’s oceans (Albouy et al., 2013; Ben Rais Lasram et al., 2010; Benedetti et al., 2019; Cheung et al., 2009; Schickele et al., 2020).

To account for the uncertainty associated with the choice of a particular correlative statistical method for climatic niche modelling, we used an ensemble forecasting approach implementing a set of eight different methods (generalized linear models, generalized additive models, classification tree analysis, boosted regression trees, random forests, multivariate adaptive regression splines, artificial neural networks and flexible discriminant analysis) embedded in the BIOMOD2 multi-model platform (Thuiller et al., 2016). Models were calibrated using data with a global coverage to capture all climate conditions encountered by the species and avoid truncated climate niche (Thuiller et al., 2004). Pseudo-absences were randomly generated in order to better characterize the environmental conditions experienced by species within their current ranges (see (Hattab et al., 2013, 2014) for

methodology and Moullec et al., 2019b for more details). Models were evaluated according to the True Skill Statistic criterion (TSS; Allouche et al. 2006) with a three-fold cross-validation. First, only models with a TSS higher than 0.6 were kept for each species. Second, the consensus distribution was obtained with an ensemble forecast approach, meaning that results were weighted according to the TSS. Finally, consensus distributions were transformed into presence/absence maps by using the probability threshold that maximizes the model’s TSS, meaning that the occurrence probability for grid cells under this threshold was set to zero.

SDMs calibrated under present-day conditions were then used to make projections of the spatial distribution of species in 2071–2100 based on projected future environmental predictors (Moullec et al., 2019a). Sea temperature and salinity values at different depths were acquired for the historical period (1970–2005) and the end of the century (2071–2100, under RCP8.5 scenario) from the regional climate system model CNRM-RCSM4 (Sevault et al., 2014) that was driven by atmosphere and ocean boundary conditions extracted from the general circulation model CNRM-CM5 (Voldoire et al., 2013). CNRM-RCSM4 showed high skill in reproducing the interannual to decadal

Mediterranean variability for sea surface temperature and salinity (Sevault et al., 2014). Anomalies between the historical simulated period (1970–2005) and the future period (2071–2100) were calculated and added to present climate and salinity climatologies to project future species geographical distribution (Moullec et al., 2019a).

To match the spatial resolution of the OSMOSE-MED hybrid model, all species distribution layers were resampled on a regular grid of 20×20 km using nearest neighbour interpolation.

2.2. The osmose-med hybrid model

OSMOSE-MED, considered as a “hybrid model” in this paper, is a consistent, end-to-end modelling chain, including a general circulation model (CNRM-CM5; Voldoire et al., 2013), a regional climate model (CNRM-RCSM4; Sevault et al., 2014), a regional biogeochemistry model (Eco3M-S; Auger et al., 2011) and a multispecies trophic model (OSMOSE; Moullec et al., 2019b). Eco3M-S simulates the lower trophic part of the food web (i.e., phyto- and zoo-plankton groups) and is driven one-way by the ocean and atmosphere outputs of CNRM-RCSM4. The food web model OSMOSE, which simulates the higher trophic level part of the food web (i.e., fish, cephalopods, crustaceans), is in turn driven by the biogeochemistry outputs of Eco3M-S (phyto- and zoo-plankton biomass). The modelling chain has been implemented under the RCP8.5 climate change scenario, allowing to consider not only potential changes in species distribution (from SDMs outputs) but also changes in planktonic productivity by the end of the 21st century in the Mediterranean Sea (Moullec et al., 2019a).

OSMOSE is a multispecies and individual-based model, spatially explicit and representing the whole life cycle of several interacting marine fish and macro-invertebrates species from eggs to adult stages (Shin and Cury, 2004, 2001). Major ecological processes of the life cycle, namely growth, predation, reproduction, various sources of mortality (including fishing mortality), are modelled step by step (15 days in our study) (Appendix A2 in Supplementary data and see osmose-model.org for a full description of the OSMOSE model). OSMOSE assumes opportunistic predation based on spatio-temporal co-occurrence and size adequacy between a predator and its prey, allowing the emergence of complex trophic interactions. The model is forced by species-specific spatial distribution maps (one unique map per species throughout its life cycle) built from the SDMs approach described above (see Section 2.1). Our application covered the whole Mediterranean Sea on a regular grid of 20×20 km (6229 cells) and modelled the same one hundred marine species (mainly fish (85 species) but also cephalopods (5 species) and crustaceans (10 species)) than in the SDMs approach. Overall, the species represent around 95% of total declared catches in the region over the 2006–2013 period. A full description of the parameterization and calibration of OSMOSE-MED can be found in Moullec et al. (2019b).

To our knowledge, despite its complexity and associated uncertainty, the modelling chain used in the present study is the first able to project climate change and fishing effects on Mediterranean marine biodiversity in an integrated way, i.e., considering explicit and consistent changes in regional climate, ocean dynamics, nutrient cycle, plankton production, shifts in species distributions, their life cycles and their trophodynamic interactions (Moullec et al., 2019a).

2.3. Comparing projections of species richness and assemblage composition between SDMs and the osmose-med hybrid model

Following Albouy et al. (2012); Benedetti et al. (2018) and Le Marchand et al. (2020), we used species richness and the β ratio to characterize temporal community change related to α and β diversities. The two diversity indices obtained within each grid cell using the SDMs approach were then compared with those obtained using the OSMOSE-MED approach, i.e., additionally constraining the trophic interactions and the whole species life cycle.

α diversity was calculated by tailing species numbers for each time

period (present and future) and modelling approach (SDMs and OSMOSE-MED) by stacking all the presence/absence maps (0/1) and counting the number of present species within each grid cell. To derive presence/absence maps from OSMOSE-MED outputs, we transformed abundance distribution map per species in presence/absence map, a species with a null abundance in a cell being considered as absent from this cell. Differences in species richness were computed as the difference between the future (2071–2100, with climate change) and present species richness (2006–2013).

In a second step, we computed the β ratio index in order to quantify the relative contribution of species replacement (i.e., turnover) vs. nestedness (i.e., species loss or gain) in temporal changes in community composition (Baselga, 2012). Disentangling the contribution of these two components of β -diversity patterns is indeed fundamental to understanding how communities react to spatial, environmental and temporal changes (Carvalho et al., 2012). To calculate the β ratio, we computed the pairwise Jaccard's dissimilarity measure and calculated the ratio between its two additive components: the dissimilarity due to species replacement (or turnover (β_{tu})) and the dissimilarity due to nestedness (β_{ne}) (see Baselga, 2010, 2012). A β ratio value smaller than 0.5 indicates that dissimilarity in assemblage is mainly driven by species replacement and a β ratio value higher than 0.5 indicates that dissimilarity is mainly driven by nestedness. Furthermore, as any β ratio value can be associated with either gains or losses in species richness (Baselga, 2010), to simultaneously analyse changes in species richness and assemblage composition, we analysed and mapped the β ratio values and related changes in species richness (Albouy et al., 2012; Benedetti et al., 2018).

In a final step, α and β diversity projections were compared between the SDMs and OSMOSE-MED approaches, at different spatial scales: Geographical Sub-Areas (GSAs, the spatial scale used for assessment and management of fisheries resources in the Mediterranean Sea), marine ecoregions (as listed in the Marine Strategy Framework Directive; MSFD) and the whole Mediterranean basin (Appendix A2 in Supplementary data).

All analyses were performed with R (R version 3.5.1, R Core Team 2018), using the *betapart* package for β diversity analyses (Baselga and Orme, 2012).

3. Results

3.1. Projecting changes in species richness

Under the RCP8.5 climate change scenario, 16 and 15 species are projected to increase their geographic range by the end of the century (2071–2100), with average gains in range area of ca. 163% and ca. 131% according to SDMs and OSMOSE-MED, respectively. On the contrary, the range of 25 (SDMs) and 27 (OSMOSE-MED) species is expected to shrink, with average losses in range area of ca. 29% (SDMs) and ca. 37% (OSMOSE-MED). amongst the loser species, 3 species are projected to become extinct (no more presence) in OSMOSE-MED while SDMs projected only a reduction of their climate suitable areas (in average -45%).

At the scale of the whole Mediterranean basin, the average differences in species richness (SR) between the present and future periods (RCP8.5 scenario) were 0.37 species per grid cell when running the SDMs only (mean SR for the present period being 28.45 species per grid cell) and -0.37 species per grid cell when running OSMOSE-MED (mean SR for the present period being 28.1 species per grid cell). With both modelling approaches, a contrasted spatial pattern emerged from the simulations between the western Mediterranean Sea, characterized by an overall decrease in SR, and the central and eastern Mediterranean Sea, characterized by an overall increase in SR. The differences between SR projections from SDMs and OSMOSE-MED were predominantly localized on the continental shelf with some exceptions, e.g., in the Levantine Sea (Fig. 2). At both marine ecoregions and Geographical Sub-

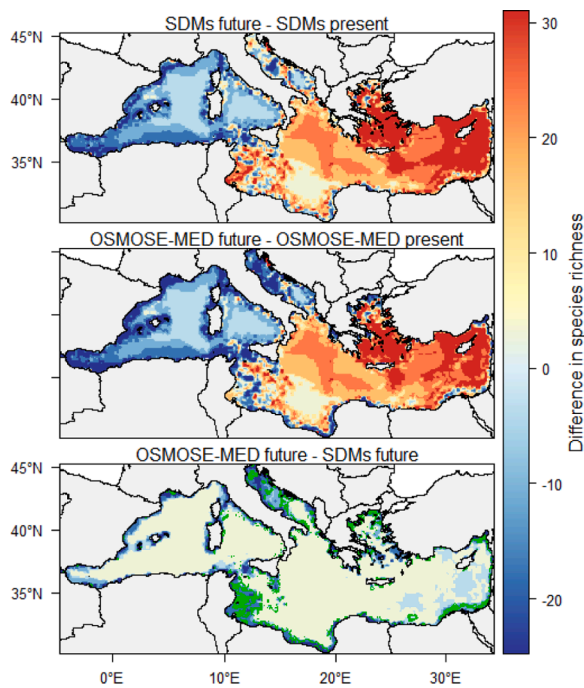


Fig. 2. Net difference in species richness between the present period (2006–2013) and the future (2071–2100) (upper panel, middle panel) from SDMs (upper panel) and OSMOSE-MED (middle panel) projections under RCP8.5 scenario. Net difference in species richness projection between SDMs and OSMOSE-MED for the future time period (2071–2100) under RCP8.5 (bottom panel). Green points on the bottom panel indicate pixels where there was no consensus in the direction of change in species richness between OSMOSE-MED and SDMs.

Areas scales, significant differences between SR projections from SDMs and OSMOSE-MED were apparent, however under different orders of magnitude (Appendix A3 in Supplementary data). Projected changes in SR diverged the most between SDMs and OSMOSE-MED in the Tunisian Gulfs of Hammamet and Gabes, the northern Adriatic Sea, the north Aegean Sea and along the Egyptian coasts. In the northern Adriatic Sea (GSA 17), the average loss in SR was -0.61 species per grid cell in SDMs while it was -3.4 species per grid cell according to OSMOSE-MED. In the Gulfs of Hammamet and Gabes (GSA 13 and 14), SDMs projected average gains in SR of 0.34 and 1.18 species per grid cell respectively and OSMOSE-MED, on the contrary projected corresponding losses in SR of -1.85 and -1.1 species per grid cell.

At the Mediterranean Sea scale, 44.15% and 48.93% of the cells (mainly in the central and eastern Mediterranean Sea) exhibited an increase in SR by the end of the century according to SDMs and OSMOSE-MED, respectively. On the contrary, cells showing a decrease in SR represented 39.75% of the Mediterranean Sea in SDMs and 47.09% in OSMOSE-MED and were mainly located on the continental shelf of the western Mediterranean Sea and in the Adriatic Sea. Net differences in SR result from gains and losses in SR that spatially differed between OSMOSE-MED and SDMs (Fig. 2 and Appendix A4 in Supplementary data). Using SDMs, higher gains in species richness were projected by the end of the century in the Gulfs of Hammamet and Gabes (on average 2.7 and 4.1 times more, respectively, $p < 0.05$), in the northern Adriatic Sea (on average 1.9 times more, $p < 0.05$), in the Levantine Sea (on average 1.2 times more, $p < 0.05$) and to a lesser extent in the Aegean Sea (on average 1.12 times more, $p < 0.05$). On the other hand, lower losses in SR were projected by SDMs on the continental slope of the Gulf of Gabes (on average 3.7 times less, $p < 0.05$), in the northern Adriatic Sea (on average 2.6 times less, $p < 0.05$), the Gulf of Lions (on average 1.4 times less, $p < 0.05$), the continental shelf of the Catalan Sea (on average 1.3 times less, $p < 0.05$) and the Alboran Sea (on average 1.24 times less,

$p < 0.05$). In the Adriatic Sea, for example, the number of cells affected by a decrease in SR was ca. 29% lower in SDMs compared to OSMOSE-MED. In the Gulf of Gabes, ca. 41% more cells were concerned by gains in SR in SDMs compared to OSMOSE-MED. In other words, under climate change scenario, SDMs overestimated the gains and underestimated the losses in species richness compared to OSMOSE-MED.

3.2. Projecting changes in species composition

Comparing projections of simultaneous changes in species richness (α diversity) and species composition (β diversity) from SDMs and OSMOSE-MED revealed similar changes in species composition between SDMs and OSMOSE-MED at the Mediterranean scale (mean β Jaccard = 0.02), albeit with more than 35.6% of the cells showing a non-zero dissimilarity. At a finer spatial scale (GSAs), dissimilarities in species composition by the end of the century between the two approaches were more apparent (Fig. 3 and Fig. 4 and Appendix A5 in Supplementary data), notably in the southern Alboran Sea, the Gulf of Gabes, the Adriatic Sea and the Levantine Sea. For both modelling approaches, species nestedness (i.e., β ratio > 0.5) accompanied by gains in species richness contributed more than other patterns in driving dissimilarity between present and future assemblages (nestedness with gains in SR represented ca. 37% and ca. 34% of the Mediterranean Sea surface according to SDMs and OSMOSE-MED, respectively) (Fig. 3 and Appendix A5 in Supplementary data). In both approaches, nestedness represented ca. 64% of the whole Mediterranean Sea but with marked local differences in projections through a west-east gradient: the western Mediterranean Sea was dominated by nestedness and a clear decrease in species richness (mean β ratio = 0.76 and 0.77 for SDMs and OSMOSE-MED, respectively, $p > 0.05$), the central Mediterranean Sea (Gulfs of Gabes and Sidra) showed a combination of nestedness and replacement with gains and losses in SR (mean β ratio = 0.24 and 0.23 for SDMs and OSMOSE-MED, respectively, $p > 0.05$) and the eastern Mediterranean Sea was characterized by nestedness associated to a net increase in species richness (mean β ratio = 0.78 for both SDMs and OSMOSE-MED, $p > 0.05$). Whether for nestedness or replacement, SDMs projected greater gains and lower losses in species richness compared to OSMOSE-MED. When analysing beta-diversity patterns at a finer spatial scale (i.e., at the GSAs scale), the relative contribution of nestedness and replacement did not drastically differ between SDMs and OSMOSE-MED projections (Appendix A5 in Supplementary data). However, in the Gulf of Gabes, SDMs projected that species replacement with increases in species richness was the main pattern driving dissimilarity between time periods (but with many local patches on the continental shelf where nestedness associated to gains in SR was the main driver) while OSMOSE-MED projected a decrease in SR associated with species replacement (only 10% of the cells in SDMs and three-fold less (3%) in OSMOSE-MED were associated with nestedness). Projections also markedly differed in the southern Alboran Sea (28% of the cells in SDMs and 50% in OSMOSE-MED were associated with nestedness), the northern Adriatic Sea (7% of the cells in SDMs and almost double in OSMOSE-MED (13%) were associated with nestedness), the northernmost parts of the Aegean Sea and at the mouth of the Nile.

4. Discussion

Most studies projecting climate change impacts on species assemblages have used environmental niche modelling approaches that overlook key biological mechanisms such as demography, dispersal, eco-evolution, and species interactions shaping the distribution and productivity of species (Bellard et al., 2012; Urban et al., 2016). Our analysis suggested that SDMs represent a relevant and parsimonious statistical tool to project the environmental suitability of species at large spatial scales. At local scales, however, projections from SDMs alone and from a model using SDMs to drive biotic (trophic) interactions markedly differed. At the local scale (geographical sub-area in our study),

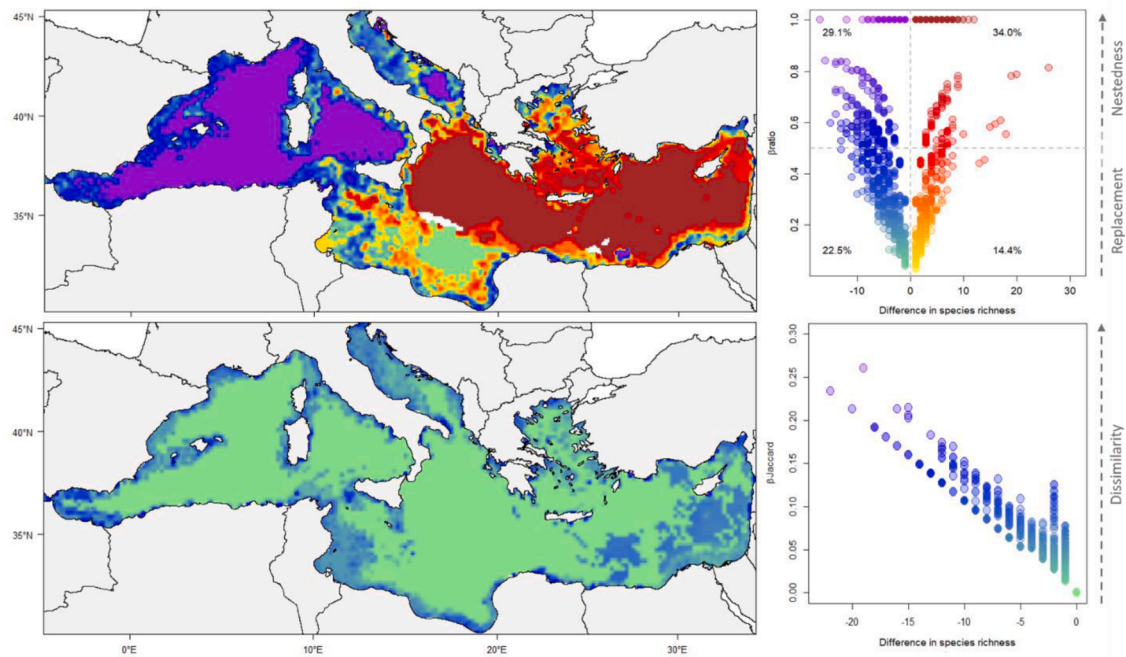


Fig. 3. Changes in species richness and composition between the present period (2006–2013) and the future (2071–2100) for the fish and macro-invertebrate assemblages of the Mediterranean Sea according to OSMOSE-MED, under RCP8.5 scenario (top left and top right panels). Temporal change in species composition was quantified using the β_{ratio} index. Grid cells with a $\beta_{ratio} < 0.5$ were dominated by the replacement process while grid cells with a $\beta_{ratio} > 0.5$ were dominated by the nestedness process. White colour on the map represents a Jaccard dissimilarity index equal to zero (meaning no change in species composition between time periods), in this case β_{ratio} was not defined. The green to blue to purple colour gradient (matching the 0, 0.5 and 1 β_{ratio} values) was used for grid cells showing a decrease in species richness while the yellow to red to brown colour gradient was used for grid cells showing an increase in species richness. Numbers represent the proportion of the Mediterranean Sea concerned by the corresponding change in species richness and composition (top right panel). Changes in species richness and composition between OSMOSE-MED and SDMs for the future period (2071–2100) (bottom left and bottom right panels). Dissimilarity between OSMOSE-MED and SDMs projections by the end of the century was quantified using the Jaccard's dissimilarity index ($\beta_{Jaccard}$). Colors on the maps (left panels) correspond to colors on the scatterplots (right panels).

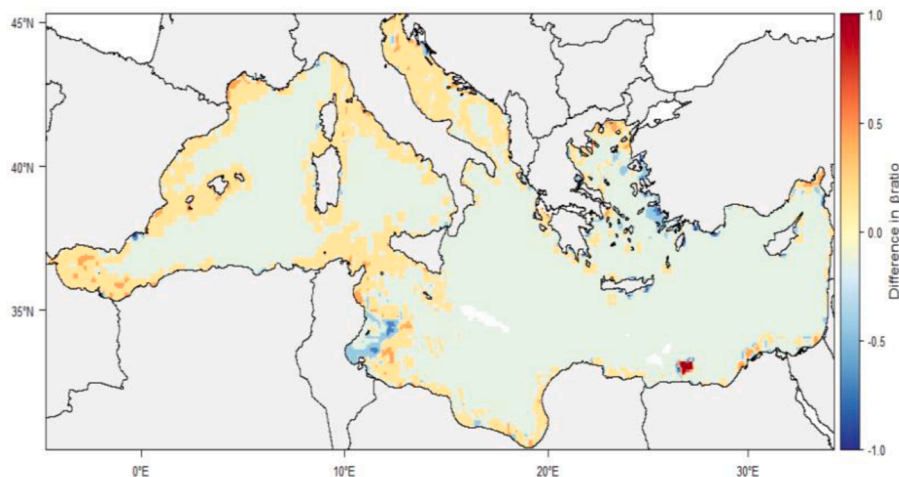


Fig. 4. Difference in β_{ratio} projection between OSMOSE-MED and SDMs for the future time period (2071–2100) under RCP8.5 scenario.

projections of climate-driven changes in assemblage composition and richness were both qualitatively and quantitatively different when species interactions were considered in the modelling of species distributions. When applied alone, SDMs produced more optimistic projections of climate-induced changes in species richness in the Mediterranean Sea, overestimating gains and underestimating losses of species richness compared to the model including trophodynamics. In particular, important differences were found in some areas of high conservation interest such as the northern Adriatic Sea and the Gulf of

Gabes, both recognized as biodiversity hotspots in the Mediterranean Sea (Ben Rais Lasram et al., 2009; Coll et al., 2010; Moullot et al., 2011). Our results agree with other studies showing that species interactions may slow climate tracking and produce more extinctions than in environmental niche models (see Urban et al., 2013). In addition, changes in species composition and single-species extinctions may modify the web of interactions within a community and may lead to cascading effects and potential coextinctions, processes not reflected in SDMs but captured by OSMOSE-MED (Bellard et al., 2012; Brook et al., 2008).

The projected extent of expansion or contraction of geographical ranges of species by the end of the century differed depending on whether species interactions were considered, with lower gains and higher losses in our model including trophodynamic interactions. Various theoretical modelling studies have suggested that changes in intensity and nature of biotic interactions such as an increase in predation or a release of competition, modulate not only the direction but also the magnitude of species range shifts (Lenoir et al., 2010; Svenning et al., 2014; Urban et al., 2013). In the OSMOSE model, the presence of a species in a given grid cell (i.e., at least one individual) is based on the one hand, by specific distribution maps (from SDMs) and, on the other hand, by its ability to maintain itself in its suitable climatic space by feeding, competing, displaying somatic growth, reproducing and resisting natural and anthropogenic pressures (i.e., fishing mortality). These added processes can cause more rapid changes in the sizes of home ranges compared to spatial changes predicted merely by SDMs that consider only the suitability of abiotic factors. For example, sea warming could lead to the arrival of new species in an area which could directly compete with and displace native species (Alexander et al., 2018). However, there is still no consensus on whether considering trophic interactions produces more pessimistic climate-induced shifts in biodiversity distribution. For example, Fernandes et al., (2013) showed that the inclusion of trophic interactions in the species-based Dynamic Bioclimate Envelope Model (DBEM) led to lower projected poleward latitudinal shifts in the distribution of marine fish, especially for pelagic species, while Engelhardt et al., (2020) reported that ignoring trophic interactions tended to overestimate the effects of climate-induced changes in species distributions.

Climate change directly impacts species physiology and spatial distribution, but also engage species in novel interactions such as competition for food, with potential feedbacks on species distribution (Araújo and Luoto, 2007; Araújo and Rozenfeld, 2014; Gallardo et al., 2016; McKnight et al., 2017; Valiente-Banuet et al., 2015; Wiens, 2016). Even if it is still an immense challenge for ecologists and modellers, mechanistically considering these interactions is essential to explore the effects of future climate change on biodiversity distribution (Jackson et al., 2009; Pellissier et al., 2013; Van der Putten et al., 2010; Wisz et al., 2013). The OSMOSE-MED model explicitly considers the whole life cycle of species. Climate change can have different and potentially more severe effects on specific life stages. For example, the recruitment (year-class success) of marine fish is normally established by processes impacting early life stages such as eggs and larvae that are planktonic (free-floating) and more sensitive than juveniles and adults to changes in abiotic factors and prone to higher rates of mortality due to starvation and/or predation (Durant et al., 2007; Llopiz et al., 2014). Furthermore, predation is modelled as a size-based and opportunistic process in OSMOSE-MED (not predefined based on diet matrices of species), making it a powerful tool to predict potential interactions of species that do not currently co-occur or interact, but may do so in the future. With all these processes represented, our OSMOSE-MED hybrid model intends to better capture the future realized niche of the species for producing more robust biodiversity projections.

Our results pointed that in both SDMs and OSMOSE-MED approaches, at the Mediterranean Sea scale, dissimilarity between present-day and future assemblages was mainly driven by nestedness with increases in species richness. In contrast to what has been suggested for endemic species by Ben Rais Lasram et al. (2010), climate change might thus increase or decrease the richness of the initial assemblage without a total turnover of assemblages. The projected patterns were spatially contrasted, with for instance, in the Gulf of Gabes, three times as many grid cells concerned by nestedness in the SDMs compared to OSMOSE-MED. In this area, while SDMs projected changes in species composition almost entirely driven by species replacement with gains in richness, OSMOSE-MED projected that changes could be mainly caused by replacement with species losses.

Depending on the spatial scale considered, our results can highly

differ from previous studies in the region that focused on projections based on environmental niche modelling approaches (Albouy et al., 2012, 2013; Ben Rais Lasram et al., 2010; Benedetti et al., 2019, 2018). For instance, under the SRES A2 scenario, (Albouy et al., 2012) found that species replacement was the dominant pattern of change projected in Mediterranean coastal fish assemblages (accounting for 98% of the continental shelf). In contrast and in agreement with our estimates, Benedetti et al., (2018) found that nestedness was the main pattern driving dissimilarity between present and future copepod assemblages. Our results also differed from Albouy et al., (2013) who projected that ca. 70% of the continental shelf could experience a decrease and ca. 27% an increase in species richness by the end of the century (47% and 44%, respectively, at the whole Mediterranean Sea scale, according to OSMOSE-MED). Compared to (Albouy et al., 2012) and Benedetti et al., (2019), the average rate of change in species richness that we found at the Mediterranean Sea scale was also much lower, with higher losses in the western regions and lower losses in the eastern ones. This pattern was partly related to the large increase in abundance of thermophilic and/or exotic species in the eastern Mediterranean and to the decrease in abundance of some species of high commercial interest in the western part (see Moulllec et al., (2019a) for an extended discussion on climate change consequences on the structure and functioning of the Mediterranean Sea by the end of the 21st century). There are several explanations for the differences in projections. First, the environmental niche models used by (Albouy et al., 2012, 2013) were not trained at the global scale but at the Mediterranean Sea scale which can lead to truncated environmental niches and overestimation of extinction rates (Thuiller et al., 2004). Second, not the same set of species (endemic species vs. one hundred miscellaneous species in our study) and the area (continental shelf vs. whole Mediterranean Sea in our study) were modelled which could also contribute to the discrepancies between the studies. Third, previous studies used a different IPCC climate change scenario, namely the Special Report on Emission Scenario (SRES) A2 (vs the RCP8.5 scenario), and an older version of the regional circulation model CNRM-RCSM4 (IPCC, 2014; Rogelj et al., 2012). Fourth, in contrast to previous niche modelling approaches, the end-to-end model OSMOSE-MED that we developed is fully integrated and considers, for the first time in the region, major biotic and abiotic processes that drive changes in population dynamics and community structure and composition.

Despite attempts to make projections more realistic and credible, several caveats persist in our approach. For example, we did not consider other drivers of fish distribution (e.g., seafloor, oxygen concentration) that may prevail at local scales to prevent life-cycle closure and population persistence (Petitgas et al., 2013) and which will most likely be impacted by future anthropogenic pressures. We also did not consider the potential arrivals of thermophilic non-native species from the Atlantic or the Red Sea which will likely influence the future biodiversity in the Mediterranean Sea (Ben Rais Lasram and Mouillot, 2009; Parravicini et al., 2015) and could dramatically affect future assemblages (Edelist et al., 2013). Another limit in our projections was that phenotypic plasticity and genetic evolution were not included into OSMOSE-MED to mechanistically depict the potential eco-evolutionary dynamics shaping future communities and food webs (Peck et al., 2018). Yet, these adaptive processes might allow species to evolve in a new ecological niche, thus dampening climate change impacts on marine organisms and ecosystems (Beaugrand and Kirby, 2018; Cotto et al., 2017). Although our end-to-end approach considers two major components of global change (climate change and fishing pressure), we neglected other anthropogenic pressures such as pollution or habitat destruction which can act in synergy and exacerbate the vulnerability of species, ultimately accelerating changes in species composition and richness and making the estimates from our projections conservative in terms of biodiversity loss. Finally, for practical and pragmatic reasons (Moulllec et al., 2019a, 2019b) and, similar to most studies conducted in the region, we did not thoroughly investigate the uncertainty associated

with our projections. Although some aspects of structural uncertainty were addressed by using an ensemble estimate of SDMs, other sources of uncertainty stemming from differences amongst scenarios, global climate models, and regional physical-biogeochemical models were not included (Peck et al., 2020). This is clearly one of the future challenges that need to be addressed when tackling biodiversity projections, especially with increasingly complex models (IPBES 2016; Tang et al., 2018; Thuiller et al., 2019).

Author contributions

FM and YJS conceived and designed the research. FM developed the models and performed the analyses. SD, FG, TH, MP and YJS helped in data analyses and/or interpretation. SD and FG helped in the development of species distribution models. NB helped with programming the code of OSMOSE and the use of the HPC cluster DATARMOR. All authors contributed to the writing of the article and approved the submitted version.

Funding

This work was partly funded by the *USBIO* project of the LabEx CeMEB, an ANR "Investissements d'avenir" program (ANR-10-LABX-04-01), the 2017–2018 Belmont Forum and BiodivERSa joint call for research proposals, under the BiodivScen ERA-Net COFUND programme, and with the funding organisations ANR (ANR-18-EBI4-0003-01), DFG, MINECO-AEI, NSERC, OUC, and TÜBITAK and the European Union's Horizon 2020 research and innovation program under grant agreement N°869,300 (FutureMARES project). YJS acknowledges funding support from the Pew marine fellows programme.

Data availability statement

The raw data supporting the conclusions of this manuscript will be made available by the authors, without undue reservation, to any qualified researcher.

Declaration of Competing Interest

The authors declare that the research was conducted in the absence of any commercial or financial relationships that could be construed as a potential conflict of interest.

Acknowledgments

The authors acknowledge the Pôle de Calcul et de Données Marines (PCDM) for providing DATARMOR computational resources (<http://www.ifremer.fr/pcdm>). The authors also acknowledge the CNRM for making the physical data available and Caroline Ulses from the Laboratoire d'Aérodynamique (Toulouse, France) for providing biogeochemical data. The climatic simulations used in this work were downloaded from the Med-CORDEX database (www.medcordex.eu).

Supplementary materials

Supplementary material associated with this article can be found, in the online version, at [doi:10.1016/j.ecolmodel.2021.109826](https://doi.org/10.1016/j.ecolmodel.2021.109826).

References

- Albouy, C., Ben Rais Lasram, F., Velez, L., Guilhaumon, F., Meynard, C.N., Boyer, S., Benestan, L., Mouquet, N., Douzery, E., Aznar, R., Troussellier, M., Somot, S., Leprieur, F., Le Loc'h, F., Mouillot, D., 2015a. FishMed: traits, phylogeny, current and projected species distribution of Mediterranean fishes, and environmental data. *Ecology* 96, 2312–2313. <https://doi.org/10.1890/14-2279.1>
- Albouy, C., Guilhaumon, F., Araújo, M.B., Mouillot, D., Leprieur, F., 2012. Combining projected changes in species richness and composition reveals climate change impacts on coastal Mediterranean fish assemblages. *Glob. Change Biol.* 18, 2995–3003. <https://doi.org/10.1111/j.1365-2486.2012.02772.x>
- Albouy, C., Guilhaumon, F., Leprieur, F., Ben Rais Lasram, F., Somot, S., Aznar, R., Velez, L., Le Loc'h, F., Mouillot, D., 2013. Projected climate change and the changing biogeography of coastal Mediterranean fishes. *J. Biogeogr.* 40, 534–547. <https://doi.org/10.1111/jbi.12013>
- Albouy, C., Leprieur, F., Le Loc'h, F., Mouquet, N., Meynard, C.N., Douzery, E.J.P., Mouillot, D., 2015b. Projected impacts of climate warming on the functional and phylogenetic components of coastal Mediterranean fish biodiversity. *Ecography* 38, 681–689. <https://doi.org/10.1111/ecog.01254>
- Albouy, C., Velez, L., Coll, M., Colloca, F., Le Loc'h, F., Mouillot, D., Gravel, D., 2014a. From projected species distribution to food-web structure under climate change. *Glob. Change Biol.* 20, 730–741. <https://doi.org/10.1111/gcb.12467>
- Albouy, C., Velez, L., Coll, M., Colloca, F., Le Loc'h, F., Mouillot, D., Gravel, D., 2014b. From projected species distribution to food-web structure under climate change. *Glob. Change Biol.* 20, 730–741. <https://doi.org/10.1111/gcb.12467>
- Alexander, J.M., Chalmardrier, L., Lenoir, J., Burgess, T.I., Essl, F., Haider, S., Kueffer, C., McDougall, K., Milbau, A., Nuñez, M.A., Pauchard, A., Rabitsch, W., Rew, L.J., Sanders, N.J., Pellissier, L., 2018. Lags in the response of mountain plant communities to climate change. *Glob. Change Biol.* 24, 563–579. <https://doi.org/10.1111/gcb.13976>
- Araújo, C.B.de, Marcondes-Machado, L.O., Costa, G.C., 2014. The importance of biotic interactions in species distribution models: a test of the Eltonian noise hypothesis using parrots. *J. Biogeogr.* 41, 513–523. <https://doi.org/10.1111/jbi.12234>
- Araújo, M.B., Luoto, M., 2007. The importance of biotic interactions for modelling species distributions under climate change. *Glob. Ecol. Biogeogr.* 16, 743–753. <https://doi.org/10.1111/j.1466-8238.2007.00359.x>
- Araújo, M.B., Rozenfeld, A., 2014. The geographic scaling of biotic interactions. *Ecography* 37, 406–415. <https://doi.org/10.1111/j.1600-0587.2013.00643.x>
- Auger, P.A., Diaz, F., Ulses, C., Estournel, C., Neveux, J., Joux, F., Pujo-Pay, M., Naudin, J.J., 2011. Functioning of the planktonic ecosystem on the Gulf of Lions shelf (NW Mediterranean) during spring and its impact on the carbon deposition: a field data and 3-D modelling combined approach. *Biogeosciences* 8, 3231–3261. <https://doi.org/10.5194/bg-8-3231-2011>
- Baselga, A., 2012. The relationship between species replacement, dissimilarity derived from nestedness, and nestedness. *Glob. Ecol. Biogeogr.* 21, 1223–1232. <https://doi.org/10.1111/j.1466-8238.2011.00756.x>
- Baselga, A., 2010. Partitioning the turnover and nestedness components of beta diversity. *Glob. Ecol. Biogeogr.* 19, 134–143. <https://doi.org/10.1111/j.1466-8238.2009.00490.x>
- Baselga, A., Orme, C.D.L., 2012. betapart: an R package for the study of beta diversity. *Methods Ecol. Evol.* 3, 808–812. <https://doi.org/10.1111/j.2041-210X.2012.00224.x>
- Baudron, A.R., Brunel, T., Blanchet, M., Hidalgo, M., Chust, G., Brown, E.J., Kleisner, K. M., Millar, C., MacKenzie, B.R., Nikolaidakis, N., Fernandes, J.A., Fernandes, P.G., 2020. Changing fish distributions challenge the effective management of European fisheries. *Ecography* ecog 04864. <https://doi.org/10.1111/ecog.04864>
- Beaugrand, G., Kirby, R.R., 2018. How Do Marine Pelagic Species Respond to Climate Change? Theories and Observations. *Annu. Rev. Mar. Sci.* 10, 169–197. <https://doi.org/10.1146/annurev-marine-121916-063304>
- Bellard, C., Bertelsmeier, C., Leadley, P., Thuiller, W., Courchamp, F., 2012. Impacts of climate change on the future of biodiversity. *Ecol. Lett.* 15, 365–377. <https://doi.org/10.1111/j.1461-0248.2011.01736.x>
- Ben Rais Lasram, F., Guilhaumon, F., Albouy, C., Somot, S., Thuiller, W., Mouillot, D., 2010. The Mediterranean Sea as a 'cul-de-sac' for endemic fishes facing climate change. *Glob. Change Biol.* 16, 3233–3245. <https://doi.org/10.1111/j.1365-2486.2010.02224.x>
- Ben Rais Lasram, F., Guilhaumon, F., Mouillot, D., 2009. Fish diversity patterns in the Mediterranean Sea: deviations from a mid-domain model. *Mar. Ecol. Prog. Ser.* 376, 253–267. <https://doi.org/10.3354/meps07786>
- Ben Rais Lasram, F., Mouillot, D., 2009. Increasing southern invasion enhances congruence between endemic and exotic Mediterranean fish fauna. *Biol. Invasions* 11, 697. <https://doi.org/10.1007/s10530-008-9284-4>
- Benedetti, F., Ayata, S.-D., Irissou, J.-O., Adloff, F., Guilhaumon, F., 2019. Climate change may have minor impact on zooplankton functional diversity in the Mediterranean Sea. *Divers. Distrib.* 25, 568–581. <https://doi.org/10.1111/ddi.12857>
- Benedetti, F., Guilhaumon, F., Adloff, F., Ayata, S.-D., 2018. Investigating uncertainties in zooplankton composition shifts under climate change scenarios in the Mediterranean Sea. *Ecography* 41, 345–360. <https://doi.org/10.1111/ecog.02434>
- Bindoff, N.L., Cheung, W.W.L., Kairo, J.G., Aristegui, J., Gunder, V.A., Hallberg, R., Hilmi, N., Jiao, N., Karim, M.S., Levin, L., O'Donoghue, S., Purca Cuicupusa, S.R., Rinkevich, B., Suga, T., Tagliabue, A., Williamson, P., 2019. Changing Ocean, Marine Ecosystems, and Dependent Communities. In: Pörtner, H.O., Roberts, D.C., Masson-Delmotte, V., Zhai, P., Tignor, M., Poloczanska, E., Mintenbeck, K., Alegría, A., Nicolai, M., Okem, A., Petzold, J., Rama, B., Weyer, N.M. (Eds.), *IPCC Special Report On the Ocean and Cryosphere in a Changing Climate*. In press.
- Blowes, S.A., Supp, S.R., Antão, L.H., Bates, A., Bruelheide, H., Chase, J.M., Moyes, F., Magurran, A., McGill, B., Myers-Smith, I.H., Winter, M., Bjorkman, A.D., Bowler, D. E., Byrnes, J.E.K., Gonzalez, A., Hines, J., Isbell, F., Jones, H.P., Navarro, L.M., Thompson, P.L., Vellend, M., Waldo, C., Dornelas, M., 2019. The geography of biodiversity change in marine and terrestrial assemblages. *Science* 366, 339–345. <https://doi.org/10.1126/science.aaw1620>
- Brook, B.W., Sodhi, N.S., Bradshaw, C.J.A., 2008. Synergies among extinction drivers under global change. *Trends Ecol. Evol.* 23, 453–460. <https://doi.org/10.1016/j.tree.2008.03.011>

- Bryndum-Buchholz, A., Tittensor, D.P., Blanchard, J.L., Cheung, W.W.L., Coll, M., Galbraith, E.D., Jennings, S., Maury, O., Lotze, H.K., 2019. Twenty-first-century climate change impacts on marine animal biomass and ecosystem structure across ocean basins. *Glob. Change Biol.* 25, 459–472. <https://doi.org/10.1111/gcb.14512>.
- Carvalho, J.C., Cardoso, P., Gomes, P., 2012. Determining the relative roles of species replacement and species richness differences in generating beta-diversity patterns: partitioning beta diversity. *Glob. Ecol. Biogeogr.* 21, 760–771. <https://doi.org/10.1111/j.1466-8238.2011.00694.x>.
- Cheng, L., Abraham, J., Hausfather, Z., Trenberth, K.E., 2019. How fast are the oceans warming? *Science* 363, 128–129. <https://doi.org/10.1126/science.aav7619>.
- Cheung, W.W.L., Lam, V.W.Y., Sarmiento, J.L., Kearney, K., Watson, R., Pauly, D., 2009. Projecting global marine biodiversity impacts under climate change scenarios. *Fish Fish* 10, 235–251. <https://doi.org/10.1111/j.1467-2979.2008.00315.x>.
- Cheung, W.W.L., Reygondeau, G., Frölicher, T.L., 2016. Large benefits to marine fisheries of meeting the 1.5 °C global warming target. *Science* 354, 1591–1594. <https://doi.org/10.1126/science.aag2331>.
- Coll, M., Piroddi, C., Albouy, C., Ben Rais Lasram, F., Cheung, W.W.L., Christensen, V., Karpouzli, V.S., Guilhaumon, F., Mouillot, D., Paleczny, M., Palomares, M.L., Steenbeek, J., Trujillo, P., Watson, R., Pauly, D., 2012. The Mediterranean Sea under siege: spatial overlap between marine biodiversity, cumulative threats and marine reserves. *Glob. Ecol. Biogeogr.* 21, 465–480. <https://doi.org/10.1111/j.1466-8238.2011.00697.x>.
- Coll, M., Piroddi, C., Steenbeek, J., Kaschner, K., Lasram, Ben Rais, F., Aguzzi, J., Ballesteros, E., Bianchi, C.N., Corbera, J., Dailianis, T., Danovaro, R., Estrada, M., Froggia, C., Galil, B.S., Gasol, J.M., Gertwagen, R., Gil, J., Guilhaumon, F., Kesner-Reyes, K., Kitsos, M.-S., Koukouras, A., Lampadariou, N., Laxamana, E., Cuadra, de la, C. M.L.-F., Lotze, H.K., Martin, D., Mouillot, D., Oro, D., Raicevich, S., Rivas-Barile, J., Saiz-Salinas, J.I., Vicente, C.S., Somot, S., Templado, J., Turon, X., Vafidis, D., Villanueva, R., Voultsiadou, E., 2010. The Biodiversity of the Mediterranean Sea: estimates, Patterns, and Threats. *PLoS ONE* 5, e11842. <https://doi.org/10.1371/journal.pone.0011842>.
- Cotto, O., Wessely, J., Georges, D., Klöner, G., Schmid, M., Dullinger, S., Thuiller, W., Guillaume, F., 2017. A dynamic eco-evolutionary model predicts slow response of alpine plants to climate warming. *Nat. Commun.* 8, 1–9. <https://doi.org/10.1038/ncomms15399>.
- Cramer, W., Guiot, J., Fader, M., Garrabou, J., Gattuso, J.-P., Iglesias, A., Lange, M.A., Lionello, P., Llasat, M.C., Paz, S., Peñuelas, J., Snoussi, M., Toreti, A., Tsimplis, M.N., Xoplaki, E., 2018. Climate change and interconnected risks to sustainable development in the Mediterranean. *Nat. Clim. Change* 8, 972. <https://doi.org/10.1038/s41558-018-0299-2>.
- Davis, A.J., Jenkinson, L.S., Lawton, J.H., Shorrocks, B., Wood, S., 1998. Making mistakes when predicting shifts in species range in response to global warming. *Nature* 391, 783–786. <https://doi.org/10.1038/35842>.
- Díaz, S., Settele, J., Brondizio, E.S., Ngo, H.T., Agard, J., Arneith, A., Balvanera, L., Brauman, K.A., Butchart, S.H.M., Chan, K.M.A., Garibaldi, L.A., Ichii, K., Liu, J., Subramanian, S.M., Midgley, G.F., Miloslavich, P., Molnár, Z., Obura, D., Pfaff, A., Polasky, S., Purvis, A., Razaque, J., Reyers, B., Chowdhury, R.R., Shin, Y.-J., Visseren-Hamakers, I., Willis, K.J., Zayas, C.N., 2019. Pervasive human-driven decline of life on Earth points to the need for transformative change. *Science* 366. <https://doi.org/10.1126/science.aax3100>.
- Doney, S.C., Ruckelshaus, M., Emmett Duffy, J., Barry, J.P., Chan, F., English, C.A., Galindo, H.M., Grebmeier, J.M., Hollowed, A.B., Knowlton, N., Polovina, J., Rabalais, N.N., Sydeman, W.J., Talley, L.D., 2012. Climate Change Impacts on Marine Ecosystems. *Annu. Rev. Mar. Sci.* 4, 11–37. <https://doi.org/10.1146/annurev-marine-041911-111611>.
- Dormann, C.F., 2007. Promising the future? Global change projections of species distributions. *Basic Appl. Ecol.* 8, 387–397. <https://doi.org/10.1016/j.baee.2006.11.001>.
- Du Pontavice, H., Gascuel, D., Reygondeau, G., Maureaud, A., Cheung, W.W.L., 2019. Climate change undermines the global functioning of marine food webs. *Glob. Change Biol.* n/a. <https://doi.org/10.1111/gcb.14944>.
- Durant, J.M., Hjermann, D.Ø., Ottersen, G., Stenseth, N.C., 2007. Climate and the match or mismatch between predator requirements and resource availability. *Clim. Res.* 33, 271–283. <https://doi.org/10.3354/cr033271>.
- Edelst, D., Rilov, G., Golani, D., Carlton, J.T., Spanier, E., 2013. Restructuring the Sea: profound shifts in the world's most invaded marine ecosystem. *Divers. Distrib.* 19, 69–77. <https://doi.org/10.1111/ddi.12002>.
- Elith, J., Leathwick, J.R., 2009. Species Distribution Models: ecological Explanation and Prediction Across Space and Time. *Annu. Rev. Ecol. Syst.* 40, 677–697. <https://doi.org/10.1146/annurev.ecolsys.110308.120159>.
- Engelhardt, E.K., Neuschulz, E.L., Hof, C., 2020. Ignoring biotic interactions overestimates climate change effects: the potential response of the spotted nutcracker to changes in climate and resource plants. *J. Biogeogr.* 47, 143–154. <https://doi.org/10.1111/jbi.13699>.
- Fernandes, J.A., Cheung, W.W.L., Jennings, S., Butenschön, M., Mora, L.de, Frölicher, T. L., Barange, M., Grant, A., 2013. Modelling the effects of climate change on the distribution and production of marine fishes: accounting for trophic interactions in a dynamic bioclimate envelope model. *Glob. Change Biol.* 19, 2596–2607. <https://doi.org/10.1111/gcb.12231>.
- Gallardo, B., Clavero, M., Sánchez, M.I., Vilà, M., 2016. Global ecological impacts of invasive species in aquatic ecosystems. *Glob. Change Biol.* 22, 151–163. <https://doi.org/10.1111/gcb.13004>.
- García Molinos, J., Halpern, B.S., Schoeman, D.S., Brown, C.J., Kiessling, W., Moore, P.J., Pandolfi, J.M., Poloczanska, E.S., Richardson, A.J., Burrows, M.T., 2016. Climate velocity and the future global redistribution of marine biodiversity. *Nat. Clim. Change* 6, 83–88. <https://doi.org/10.1038/nclimate2769>.
- Gavish, Y., Marsh, C.J., Kuemmerlen, M., Stoll, S., Haase, P., Kunin, W.E., 2017. Accounting for biotic interactions through alpha-diversity constraints in stacked species distribution models. *Methods Ecol. Evol.* 8, 1092–1102. <https://doi.org/10.1111/2041-210X.12731>.
- Giannini, T.C., Chapman, D.S., Saraiva, A.M., Alves-dos-Santos, I., Biesmeijer, J.C., 2013. Improving species distribution models using biotic interactions: a case study of parasites, pollinators and plants. *Ecography* 36, 649–656. <https://doi.org/10.1111/j.1600-0587.2012.07191.x>.
- Gilman, S.E., Urban, M.C., Tewksbury, J., Gilchrist, G.W., Holt, R.D., 2010. A framework for community interactions under climate change. *Trends Ecol. Evol.* 25, 325–331. <https://doi.org/10.1016/j.tree.2010.03.002>.
- Giorgi, F., 2006. Climate change hot-spots. *Geophys. Res. Lett.* 33, L08707. <https://doi.org/10.1029/2006GL025734>.
- Guisan, A., Thuiller, W., 2005. Predicting species distribution: offering more than simple habitat models. *Ecol. Lett.* 8, 993–1009. <https://doi.org/10.1111/j.1461-0248.2005.00792.x>.
- Hattab, T., Albouy, C., Ben Rais Lasram, F., Somot, S., Le Loc'h, F., Leprieur, F., 2014. Towards a better understanding of potential impacts of climate change on marine species distribution: a multiscale modelling approach. *Glob. Ecol. Biogeogr.* 23, 1417–1429. <https://doi.org/10.1111/gcb.12217>.
- Hattab, T., Ben Rais Lasram, F., Albouy, C., Sammari, C., Romdhane, M.S., Cury, P., Leprieur, F., Loc'h, F.L., 2013. The Use of a Predictive Habitat Model and a Fuzzy Logic Approach for Marine Management and Planning. *PLoS ONE* 8, e76430. <https://doi.org/10.1371/journal.pone.0076430>.
- Hattab, T., Leprieur, F., Ben Rais Lasram, F., Gravel, D., Le Loc'h, F., Albouy, C., 2016. Forecasting fine-scale changes in the food-web structure of coastal marine communities under climate change. *Ecography* 39, 1227–1237. <https://doi.org/10.1111/ecog.01937>.
- Heikkinen, R.K., Luoto, M., Araújo, M.B., Virkkala, R., Thuiller, W., Sykes, M.T., 2006. Methods and uncertainties in bioclimatic envelope modelling under climate change. *Prog. Phys. Geogr. Earth Environ.* 30, 751–777. <https://doi.org/10.1177/0309133306071957>.
- Hof, A.R., Jansson, R., Nilsson, C., 2012. How biotic interactions may alter future predictions of species distributions: future threats to the persistence of the arctic fox in Fennoscandia. *Divers. Distrib.* 18, 554–562. <https://doi.org/10.1111/j.1472-4642.2011.00876.x>.
- Hutchinson, G.E., 1957. Concluding Remarks. *Cold Spring Harb. Symp. Quant. Biol.* 22, 415–427. <https://doi.org/10.1101/SQB.1957.022.01.039>.
- IPBES, 2019. *Global Assessment Report on Biodiversity and Ecosystem Services*. Secretariat of the Intergovernmental Science-Policy Platform on Biodiversity and Ecosystem Services, Bonn, Germany.
- IPBES, 2016. In: Ferrier, S., Ninan, K.N., Leadley, P., Alkemade, R., Acosta, L.A., Akçakaya, H.R., Brotons, L., Cheung, W.W.L., Christensen, V., Harhash, K.A., Kabubo-Mariara, J., Lundquist, C., Obersteiner, M., Pereira, H.M., Peterson, G., Pichs-Madruga, R., Ravindranath, N., Rondinini, C., Wintle, B.A. (Eds.), *The Methodological Assessment Report On Scenarios and Models of Biodiversity and Ecosystem Services*. Secretariat of the Intergovernmental Science-Policy Platform on Biodiversity and Ecosystem Services, Bonn, Germany, p. 348 pages.
- IPCC, 2019. In: Pörtner, H.O., Roberts, D.C., Masson-Delmotte, V., Zhai, P., Tignor, M., Poloczanska, E., Mintenbeck, K., Alegria, A., Nicolai, M., Okem, A., Petzold, J., Rama, B., Weyer, N.M. (Eds.), *IPCC Special Report On the Ocean and Cryosphere in a Changing Climate*. In press.
- IPCC, 2014. *Climate Change 2014: synthesis Report*. In: Core Writing Team, Pachauri, R. K., Meyer, L.A. (Eds.), *Contribution of Working Groups I, II and III to the Fifth Assessment Report of the Intergovernmental Panel On Climate Change*. IPCC, Geneva, Switzerland, p. 151 (eds.).
- Jackson, S.T., Betancourt, J.L., Booth, R.K., Gray, S.T., 2009. Ecology and the ratchet of events: climate variability, niche dimensions, and species distributions. *Proc. Natl. Acad. Sci.* 106, 19685–19692. <https://doi.org/10.1073/pnas.0901644106>.
- Kissling, W.D., Field, R., Kornthuer, H., Heyder, U., Böhning-Gaese, K., 2010. Woody plants and the prediction of climate-change impacts on bird diversity. *Philos. Trans. R. Soc. B Biol. Sci.* 365, 2035–2045. <https://doi.org/10.1098/rstb.2010.0008>.
- Klanderud, K., Totland, Ø., 2005. Simulated Climate Change Altered Dominance Hierarchies and Diversity of an Alpine Biodiversity Hotspot. *Ecology* 86, 2047–2054. <https://doi.org/10.1890/04-1563>.
- Lavergne, S., Mouquet, N., Thuiller, W., Ronce, O., 2010. Biodiversity and Climate Change: integrating Evolutionary and Ecological Responses of Species and Communities. *Annu. Rev. Ecol. Syst.* 41, 321–350. <https://doi.org/10.1146/annurev-ecolsys-102209-144628>.
- Le Marchand, M., Hattab, T., Niquil, N., Albouy, C., Loc'h, F.L., Lasram, F.B.R., 2020. Climate change in the Bay of Biscay: changes in spatial biodiversity patterns could be driven by the arrivals of southern species. *Mar. Ecol. Prog. Ser.* 647, 17–31. <https://doi.org/10.3354/meps13401>.
- Leadley, P., Pereira, H.M., Alkemade, R., Fernandez-Manjarrés, Proença, V., Scharlemann, J.P.W., Walpole, M., 2010. *Biodiversity Scenarios: projections of 21st century change in biodiversity and associated ecosystem services*. Secretariat of the Convention on Biological Diversity, Montreal (50), 132. Technical Seriespages.
- Lenoir, J., Bertrand, R., Comte, L., Bourgeaud, L., Hattab, T., Murielle, J., Grenouillet, G., 2020. Species better track climate warming in the oceans than on land. *Nat. Ecol. Evol.* 4, 1044–1059. <https://doi.org/10.1038/s41559-020-1198-2>.
- Lenoir, J., Gégout, J.-C., Guisan, A., Vittoz, P., Wohlgemuth, T., Zimmermann, N.E., Dullinger, S., Pauli, H., Willner, W., Svenning, J.-C., 2010. Going against the flow: potential mechanisms for unexpected downslope range shifts in a warming climate. *Ecography* 33, 295–303. <https://doi.org/10.1111/j.1600-0587.2010.06279.x>.

- Llopiz, J.K., Cowen, R.K., Hauff, M.J., Ji, R., Munday, P.L., Muhling, B.A., Peck, M.A., Richardson, D.E., Sogard, S., Sponaugle, S., 2014. Early Life History and Fisheries Oceanography: new Questions in a Changing World. *Oceanography* 27, 26–41.
- Lotze, H.K., Tittensor, D.P., Bryndum-Buchholz, A., Eddy, T.D., Cheung, W.W.L., Galbraith, E.D., Barange, M., Barrier, N., Bianchi, D., Blanchard, J.L., Bopp, L., Büchner, M., Bulman, C.M., Carozza, D.A., Christensen, V., Coll, M., Dunne, J.P., Fulton, E.A., Jennings, S., Jones, M.C., Mackinson, S., Maury, O., Niiranen, S., Oliveros-Ramos, R., Roy, T., Fernandes, J.A., Schewe, J., Shin, Y.-J., Silva, T.A.M., Steenbeek, J., Stock, C.A., Verley, P., Volkholz, J., Walker, N.D., Worm, B., 2019. Global ensemble projections reveal trophic amplification of ocean biomass declines with climate change. *Proc. Natl. Acad. Sci.*, 201900194 <https://doi.org/10.1073/pnas.1900194116>.
- McKnight, E., García-Berthou, E., Srean, P., Rius, M., 2017. Global meta-analysis of native and nonindigenous trophic traits in aquatic ecosystems. *Glob. Change Biol.* 23, 1861–1870. <https://doi.org/10.1111/gcb.13524>.
- Morin, X., Lechowicz, M.J., 2008. Contemporary perspectives on the niche that can improve models of species range shifts under climate change. *Biol. Lett.* 4, 573–576. <https://doi.org/10.1098/rsbl.2008.0181>.
- Mouillot, D., Albouy, C., Guilhaumon, F., Ben Rais Lasram, F., Coll, M., Devictor, V., Meynard, C.N., Pauly, D., Tomasini, J.A., Troussellier, M., Velez, L., Watson, R., Douzery, E.J.P., Mouquet, N., 2011. Protected and Threatened Components of Fish Biodiversity in the Mediterranean Sea. *Curr. Biol.* 21, 1044–1050. <https://doi.org/10.1016/j.cub.2011.05.005>.
- Moulic, F., Barrier, N., Drira, S., Guilhaumon, F., Marsaleix, P., Somot, S., Ulses, C., Velez, L., Shin, Y.-J., 2019a. An End-to-End model reveals losers and winners in a warming Mediterranean Sea. *Front. Mar. Sci.* 6 <https://doi.org/10.3389/fmars.2019.00345>.
- Moulic, F., Velez, L., Verley, P., Barrier, N., Ulses, C., Carbonara, P., Esteban, A., Follesa, C., Gristina, M., Jadaud, A., Ligas, A., Díaz, E.L., Maiorano, P., Peristeraki, P., Spedicato, P.M.T., Thasitis, I., Valls, M., Guilhaumon, F., Shin, Y.-J., 2019b. Capturing the big picture of Mediterranean marine biodiversity with an end-to-end model of climate and fishing impacts. *Prog. Oceanogr.* 178, 102179 <https://doi.org/10.1016/j.pcean.2019.102179>.
- Palacio, F.X., Girini, J.M., 2018. Biotic interactions in species distribution models enhance model performance and shed light on natural history of rare birds: a case study using the straight-billed reedhaunter *Limnocittes rectirostris*. *J. Avian Biol.* 49, e01743. <https://doi.org/10.1111/jav.01743>.
- Parnes, C., Duarte, C., Poloczanska, E., Richardson, A.J., Singer, M.C., 2011. Overstretching attribution. *Nat. Clim. Change* 1, 2–4. <https://doi.org/10.1038/nclimate1056>.
- Parravicini, V., Azzurro, E., Kulbicki, M., Belmaker, J., 2015. Niche shift can impair the ability to predict invasion risk in the marine realm: an illustration using Mediterranean fish invaders. *Ecol. Lett.* 18, 246–253. <https://doi.org/10.1111/ele.12401>.
- Peck, M., Catalán, I., Damalas, D., Elliott, M., Ferreira, J., Hamon, K., Kamermans, P., Kay, S., Kreib, C., Pinnegar, J., Sailley, S., Taylor, N., 2020. Climate Change and European Fisheries and Aquaculture: “CERES” Project Synthesis Report. Universität Hamburg. <https://doi.org/10.25592/UHHFDM.804>.
- Peck, M.A., Arvanitidis, C., Butenschon, M., Canu, D.M., Chatziniolaou, E., Cucco, A., Domenici, P., Fernandes, J.A., Gasche, L., Huebert, K.B., Hufnagl, M., Jones, M.C., Kempf, A., Keyl, F., Maar, M., Mahevas, S., Marchal, P., Nicolas, D., Pinnegar, J.K., Rivot, E., Rochette, S., Sell, A.F., Sinerchia, M., Solidoro, C., Somerfield, P.J., Teal, L.R., Travers-Trolet, M., van de Wolfshaar, K.E., 2018. Projecting changes in the distribution and productivity of living marine resources: a critical review of the suite of modelling approaches used in the large European project VECTORS. *Estuar. Coast. Shelf Sci.* 201, 40–55. <https://doi.org/10.1016/j.eccs.2016.05.019>.
- Pecl, G.T., Araújo, M.B., Bell, J.D., Blanchard, J., Bonebrake, T.C., Chen, I.-C., Clark, T. D., Colwell, R.K., Danielsen, F., Evengård, B., Falconi, L., Ferrier, S., Frusher, S., Garcia, R.A., Griffis, R.B., Hobday, A.J., Janion-Scheepers, C., Jarzyna, M.A., Jennings, S., Lenoir, J., Linnetved, H.L., Martin, V.Y., McCormack, P.C., McDonald, J., Mitchell, N.J., Mustonen, T., Pandolfi, J.M., Pettorelli, N., Popova, E., Robinson, S.A., Scheffers, B.R., Shaw, J.D., Sorte, C.J.B., Strugnelli, J.M., Sunday, J. M., Tuanmu, M.-N., Vergés, A., Villanueva, C., Wernberg, T., Wapstra, E., Williams, S.E., 2017. Biodiversity redistribution under climate change: impacts on ecosystems and human well-being. *Science* 355, eaai9214. <https://doi.org/10.1126/science.aai9214>.
- Pellissier, L., Rohr, R.P., Ndiribe, C., Pradervand, J.-N., Salamin, N., Guisan, A., Wisz, M., 2013. Combining food web and species distribution models for improved community projections. *Ecol. Evol.* 3, 4572–4583. <https://doi.org/10.1002/ece3.843>.
- Pereira, H.M., Leadley, P.W., Proença, V., Alkemade, R., Scharlemann, J.P.W., Fernandez-Manjarres, J.F., Araújo, M.B., Balvanera, P., Biggs, R., Cheung, W.W.L., Chini, L., Cooper, H.D., Gilman, E.L., Guénette, S., Hurr, G.C., Huntington, H.P., Mace, G.M., Oberdorff, T., Revenga, C., Rodrigues, P., Scholes, R.J., Sumaila, U.R., Walpole, M., 2010. Scenarios for Global Biodiversity in the 21st Century. *Science* 330, 1496–1501. <https://doi.org/10.1126/science.1196624>.
- Petitgas, P., Rijnsdorp, A.D., Dickey-Collas, M., Engelhard, G.H., Peck, M.A., Pinnegar, J. K., Drinkwater, K., Huret, M., Nash, R.D.M., 2013. Impacts of climate change on the complex life cycles of fish. *Fish. Oceanogr.* 22, 121–139. <https://doi.org/10.1111/fog.12010>.
- Pinsky, M.L., Eikeset, A.M., McCauley, D.J., Payne, J.L., Sunday, J.M., 2019. Greater vulnerability to warming of marine versus terrestrial ectotherms. *Nature* 569, 108–111. <https://doi.org/10.1038/s41586-019-1132-4>.
- Pinsky, M.L., Reygondeau, G., Caddell, R., Palacios-Abrantes, J., Spijkers, J., Cheung, W. W.L., 2018. Preparing ocean governance for species on the move. *Science* 360, 1189–1191. <https://doi.org/10.1126/science.aat2360>.
- Pinsky, M.L., Selden, R.L., Kitchel, Z.J., 2020. Climate-Driven Shifts in Marine Species Ranges: scaling from Organisms to Communities. *Annu. Rev. Mar. Sci.* 12, 153–179. <https://doi.org/10.1146/annurev-marine-010419-010916>.
- Poloczanska, E.S., Brown, C.J., Sydeman, W.J., Kiessling, W., Schoeman, D.S., Moore, P. J., Brander, K., Bruno, J.F., Buckley, L.B., Burrows, M.T., Duarte, C.M., Halpern, B.S., Holding, J., Kappel, C.V., O’Connor, M.I., Pandolfi, J.M., Parmesan, C., Schwing, F., Thompson, S.A., Richardson, A.J., 2013. Global imprint of climate change on marine life. *Nat. Clim. Change* 3, 919–925. <https://doi.org/10.1038/nclimate1958>.
- R Core Team, 2018. R: A language and Environment For Statistical Computing. R Foundation for Statistical Computing, Vienna, Austria. URL <https://www.R-project.org/>.
- Rogelj, J., Meinshausen, M., Knutti, R., 2012. Global warming under old and new scenarios using IPCC climate sensitivity range estimates. *Nat. Clim. Change* 2, 248–253. <https://doi.org/10.1038/nclimate1385>.
- Román-Palacios, C., Wiens, J.J., 2020. Recent responses to climate change reveal the drivers of species extinction and survival. In: *Proc. Natl. Acad. Sci.* <https://doi.org/10.1073/pnas.1913007117>.
- Schickele, A., Leroy, B., Beaugrand, G., Goberville, E., Hattab, T., Francour, P., Raybaud, V., 2020. Modelling European small pelagic fish distribution: methodological insights. *Ecol. Model.* 416, 108902 <https://doi.org/10.1016/j.ecolmodel.2019.108902>.
- Serpenti, N., Baudron, A.R., Burrows, M.T., Payne, B.L., Helaouët, P., Fernandes, P.G., Heymans, J.J., 2017. Impact of ocean warming on sustainable fisheries management informs the Ecosystem Approach to Fisheries. *Sci. Rep.* 7 <https://doi.org/10.1038/s41598-017-13220-7>.
- Sevaut, F., Somot, S., Alias, A., Dubois, C., Lebeauin-Brossier, C., Nabat, P., Adloff, F., Déqué, M., Decharme, B., 2014. A fully coupled Mediterranean regional climate system model: design and evaluation of the ocean component for the 1980–2012 period. *Tellus Dyn. Meteorol. Oceanogr.* 66, 23967. <https://doi.org/10.3402/tellusa.v66.23967>.
- Shin, Y.-J., Arnett, A., Roy Chowdhury, R., Midgley, G.F., Leadley, P., Agyeman Bofo, Y., Basher, Z., Bukvareva, E., Heinemann, A., Horcea-Milcu, A.L., Kindlmann, P., Kolb, M., Krenova, Z., Oberdorff, T., Osano, P., Palomo, I., Pichs Madruga, R., Pliscoff, P., Rondinini, C., Saito, O., Sathyapalan, J., Yue, T., 2019. Chapter 4: plausible futures of nature, its contributions to people and their good quality of life. In: Brondízio, E.S., Díaz, S., Settle, J., Ngo, H.T. (Eds.), *Global Assessment Report of the Intergovernmental Science-Policy Platform on Biodiversity and Ecosystem Services*. IPBES secretariat, Bonn, Germany. <https://doi.org/10.5281/zenodo.3832074>.
- Shin, Y.-J., Cury, P., 2004. Using an individual-based model of fish assemblages to study the response of size spectra to changes in fishing. *Can. J. Fish. Aquat. Sci.* 61, 414–431. <https://doi.org/10.1139/f03-154>.
- Shin, Y.-J., Cury, P., 2001. Exploring fish community dynamics through size-dependent trophic interactions using a spatialized individual-based model. *Aquat. Living Resour.* 14, 65–80. [https://doi.org/10.1016/S0990-7440\(01\)01106-8](https://doi.org/10.1016/S0990-7440(01)01106-8).
- Singh, G.G., Hilmi, N., Bernhardt, J.R., Montemayor, A.M.C., Cashion, M., Ota, Y., Acar, S., Brown, J.M., Cottrell, R., Djoundourian, S., González-Espinoza, P.C., Lam, V., Marshall, N., Neumann, B., Pascal, N., Reygondeau, G., Rocklöv, J., Safa, A., Virto, L.R., Cheung, W., 2019. Climate impacts on the ocean are making the Sustainable Development Goals a moving target travelling away from us. *People Nat* 1, 317–330. <https://doi.org/10.1002/pan3.26>.
- Soto-Navarro, J., Jordá, G., Amores, A., Cabos, W., Somot, S., Sevaut, F., Macías, D., Djurdjevic, V., Sannino, G., Li, L., Sein, D., 2020. Evolution of Mediterranean Sea water properties under climate change scenarios in the Med-CORDEX ensemble. *Clim. Dyn.* <https://doi.org/10.1007/s00382-019-05105-4>.
- Steffen, W., Rockström, J., Richardson, K., Lenton, T.M., Folke, C., Liverman, D., Summerhayes, C.P., Barnosky, A.D., Cornell, S.E., Crucifix, M., Donges, J.F., Fetzer, I., Lade, S.J., Scheffer, M., Winkelmann, R., Schellnhuber, H.J., 2018. Trajectories of the Earth System in the Anthropocene. *Proc. Natl. Acad. Sci.* 201810141 <https://doi.org/10.1073/pnas.1810141115>.
- Svenning, J.-C., Gravel, D., Holt, R.D., Schurr, F.M., Thuiller, W., Münkemüller, T., Schiffrers, K.H., Dullinger, S., Edwards, T.C., Hickler, T., Higgins, S.L., Nabel, J.E.M. S., Pagel, J., Normand, S., 2014. The influence of interspecific interactions on species range expansion rates. *Ecography* 37, 1198–1209. <https://doi.org/10.1111/j.1600-0587.2013.00574.x>.
- Tang, Y., Winkler, J.A., Viña, A., Liu, J., Zhang, Y., Zhang, X., Li, X., Wang, F., Zhang, J., Zhao, Z., 2018. Uncertainty of future projections of species distributions in mountainous regions. *PLoS ONE* 13, e0189496. <https://doi.org/10.1371/journal.pone.0189496>.
- Thiault, L., Mora, C., Cinner, J.E., Cheung, W.W.L., Graham, N.A.J., Januchowski-Hartley, F.A., Mouillot, D., Sumaila, U.R., Claudet, J., 2019. Escaping the perfect storm of simultaneous climate change impacts on agriculture and marine fisheries. *Sci. Adv.* 5, eaaw9976. <https://doi.org/10.1126/sciadv.aaw9976>.
- Thuiller, W., Brotons, L., Araújo, M.B., Lavorel, S., 2004. Effects of restricting environmental range of data to project current and future species distributions. *Ecography* 27, 165–172. <https://doi.org/10.1111/j.0906-7590.2004.03673.x>.
- Thuiller, W., Georges, D., Engler, R., Breiner, F., 2016. Ensemble platform for species distribution modelling. *R-Forge Repository*.
- Thuiller, W., Guéguen, M., Renaud, J., Karger, D.N., Zimmermann, N.E., 2019. Uncertainty in ensembles of global biodiversity scenarios. *Nat. Commun.* 10, 1446. <https://doi.org/10.1038/s41467-019-09519-w>.
- Thuiller, W., Lafourcade, B., Engler, R., Araújo, M.B., 2009. BIOMOD – a platform for ensemble forecasting of species distributions. *Ecography* 32, 369–373. <https://doi.org/10.1111/j.1600-0587.2008.05742.x>.
- Tittensor, D.P., Beger, M., Boerder, K., Boyce, D.G., Cavanagh, R.D., Cosandey-Godin, A., Crespo, G.O., Dunn, D.C., Ghiffary, W., Grant, S.M., Hannah, L., Halpin, P.N.,

- Harfoot, M., Heaslip, S.G., Jeffery, N.W., Kingston, N., Lotze, H.K., McGowan, J., McLeod, E., McOwen, C.J., O'Leary, B.C., Schiller, L., Stanley, R.R.E., Westhead, M., Wilson, K.L., Worm, B., 2019. Integrating climate adaptation and biodiversity conservation in the global ocean. *Sci. Adv.* 5, eaay9969. <https://doi.org/10.1126/sciadv.aay9969>.
- Urban, M.C., Bocedi, G., Hendry, A.P., Mihoub, J.-B., Pe'er, G., Singer, A., Bridle, J.R., Crozier, L.G., Meester, L.D., Godsoe, W., Gonzalez, A., Hellmann, J.J., Holt, R.D., Huth, A., Johst, K., Krug, C.B., Leadley, P.W., Palmer, S.C.F., Pantel, J.H., Schmitz, A., Zollner, P.A., Travis, J.M.J., 2016. Improving the forecast for biodiversity under climate change. *Science* 353, aad8466. <https://doi.org/10.1126/science.aad8466>.
- Urban, M.C., Zarnetske, P.L., Skelly, D.K., 2013. Moving forward: dispersal and species interactions determine biotic responses to climate change. *Ann. N. Y. Acad. Sci.* 1297, 44–60. <https://doi.org/10.1111/nyas.12184>.
- Valiente-Banuet, A., Aizen, M.A., Alcántara, J.M., Arroyo, J., Cocucci, A., Galetti, M., García, M.B., García, D., Gómez, J.M., Jordano, P., Medel, R., Navarro, L., Obeso, J. R., Oviedo, R., Ramírez, N., Rey, P.J., Traveset, A., Verdú, M., Zamora, R., 2015. Beyond species loss: the extinction of ecological interactions in a changing world. *Funct. Ecol.* 29, 299–307. <https://doi.org/10.1111/1365-2435.12356>.
- Van der Putten, W.H., Macel, M., Visser, M.E., 2010. Predicting species distribution and abundance responses to climate change: why it is essential to include biotic interactions across trophic levels. *Philos. Trans. R. Soc. B Biol. Sci.* 365, 2025–2034. <https://doi.org/10.1098/rstb.2010.0037>.
- Voldoire, A., Sanchez-Gomez, E., Salas y Mélia, D., Decharme, B., Cassou, C., Sénési, S., Valcke, S., Beau, I., Alias, A., Chevallier, M., Déqué, M., Deshayes, J., Douville, H., Fernandez, E., Madec, G., Maisonnave, E., Moine, M.-P., Planton, S., Saint-Martin, D., Szopa, S., Tyteca, S., Alkama, R., Belamari, S., Braun, A., Coquart, L., Chauvin, F., 2013. The CNRM-CM5.1 global climate model: description and basic evaluation. *Clim. Dyn.* 40, 2091–2121. <https://doi.org/10.1007/s00382-011-1259-y>.
- Wiens, J.J., 2016. Climate-Related Local Extinctions Are Already Widespread among Plant and Animal Species. *PLOS Biol* 14, e2001104. <https://doi.org/10.1371/journal.pbio.2001104>.
- Wis, M.S., Pottier, J., Kissling, W.D., Pellissier, L., Lenoir, J., Damgaard, C.F., Dormann, C.F., Forchhammer, M.C., Grytnes, J.-A., Guisan, A., Heikkinen, R.K., Høye, T.T., Kühn, I., Luoto, M., Maiorano, L., Nilsson, M.-C., Normand, S., Öckinger, E., Schmidt, N.M., Termansen, M., Timmermann, A., Wardle, D.A., Aastrup, P., Svenning, J.-C., 2013. The role of biotic interactions in shaping distributions and realised assemblages of species: implications for species distribution modelling. *Biol. Rev. Camb. Philos. Soc.* 88, 15–30. <https://doi.org/10.1111/j.1469-185X.2012.00235.x>.