



## Improved electrochemical conversion of CO<sub>2</sub> to multicarbon products by using molecular doping

Huali Wu, Ji Li, Kun Qi, Yang Zhang, Eddy Petit, Wensen Wang, Valérie Flaud, Nicolas Onofrio, Bertrand Rebiere, Lingqi Huang, et al.

### ► To cite this version:

Huali Wu, Ji Li, Kun Qi, Yang Zhang, Eddy Petit, et al.. Improved electrochemical conversion of CO<sub>2</sub> to multicarbon products by using molecular doping. Nature Communications, 2021, 12 (1), pp.7210. 10.1038/s41467-021-27456-5 . hal-03501147

**HAL Id: hal-03501147**

**<https://hal.umontpellier.fr/hal-03501147>**

Submitted on 15 Jun 2022

**HAL** is a multi-disciplinary open access archive for the deposit and dissemination of scientific research documents, whether they are published or not. The documents may come from teaching and research institutions in France or abroad, or from public or private research centers.

L'archive ouverte pluridisciplinaire **HAL**, est destinée au dépôt et à la diffusion de documents scientifiques de niveau recherche, publiés ou non, émanant des établissements d'enseignement et de recherche français ou étrangers, des laboratoires publics ou privés.



Distributed under a Creative Commons Attribution 4.0 International License

## ARTICLE


<https://doi.org/10.1038/s41467-021-27456-5>

OPEN

# Improved electrochemical conversion of CO<sub>2</sub> to multicarbon products by using molecular doping

Huali Wu<sup>1</sup>, Ji Li<sup>1,2</sup>, Kun Qi<sup>1</sup>, Yang Zhang<sup>1</sup>, Eddy Petit<sup>1</sup>, Wensen Wang<sup>1</sup>, Valérie Flaud<sup>3</sup>, Nicolas Onofrio<sup>1</sup>, Bertrand Rebiere<sup>3</sup>, Lingqi Huang<sup>4</sup>, Chrystelle Salameh<sup>1</sup>, Luc Lajaunie<sup>5,6</sup>, Philippe Miele<sup>1,7</sup> & Damien Voiry<sup>1</sup>✉

The conversion of CO<sub>2</sub> into desirable multicarbon products via the electrochemical reduction reaction holds promise to achieve a circular carbon economy. Here, we report a strategy in which we modify the surface of bimetallic silver-copper catalyst with aromatic heterocycles such as thiadiazole and triazole derivatives to increase the conversion of CO<sub>2</sub> into hydrocarbon molecules. By combining operando Raman and X-ray absorption spectroscopy with electrocatalytic measurements and analysis of the reaction products, we identified that the electron withdrawing nature of functional groups orients the reaction pathway towards the production of C<sub>2+</sub> species (ethanol and ethylene) and enhances the reaction rate on the surface of the catalyst by adjusting the electronic state of surface copper atoms. As a result, we achieve a high Faradaic efficiency for the C<sub>2+</sub> formation of ≈80% and full-cell energy efficiency of 20.3% with a specific current density of 261.4 mA cm<sup>-2</sup> for C<sub>2+</sub> products.

<sup>1</sup>Institut Européen des Membranes, IEM, UMR 5635, Université Montpellier, ENSCM, CNRS, Montpellier 34000, France. <sup>2</sup>College of Bioresources and Materials Engineering, Shaanxi University of Science & Technology, 710021 Xi'an, People's Republic of China. <sup>3</sup>Institut Charles Gerhardt, ICGM, UMR 5253, University of Montpellier, ENSCM, CNRS, 34095 Montpellier Cedex 5, France. <sup>4</sup>School of Science and Engineering, The Chinese University of Hong Kong, 518172 Shenzhen, Guangdong, People's Republic of China. <sup>5</sup>Departamento de Ciencia de los Materiales e Ingeniería Metalúrgica y Química Inorgánica, Facultad de Ciencias, Universidad de Cádiz, Campus Río San Pedro S/N, Puerto Real, 11510 Cádiz, Spain. <sup>6</sup>Instituto Universitario de Investigación de Microscopía Electrónica y Materiales (IMEYMAT), Facultad de Ciencias, Universidad de Cádiz, Campus Río San Pedro S/N, Puerto Real, 11510 Cádiz, Spain. <sup>7</sup>Institut Universitaire de France (IUF), 1 rue Descartes, 75231 Paris Cedex 05, France. ✉email: [damien.voiry@umontpellier.fr](mailto:damien.voiry@umontpellier.fr)

The rapid increase in the atmospheric carbon dioxide ( $\text{CO}_2$ ) levels has motivated the development of carbon capture, utilization, and storage (CCUS) technologies. In this context, the electrochemical reduction of  $\text{CO}_2$  to hydrocarbons using renewable energy is regarded as an effective way to close the carbon cycle via the conversion of  $\text{CO}_2$  into chemical precursors or fuels<sup>1,2</sup>. The electrochemical  $\text{CO}_2$  reduction reaction ( $\text{CO}_2\text{RR}$ ) toward single carbon products has achieved enormous progress<sup>3</sup>, especially for the production of  $\text{C}_1$  molecules such as carbon monoxide (CO) or methane ( $\text{CH}_4$ )<sup>4–7</sup>. Copper (Cu) is one of the few transition metals that can efficiently catalyze the electrolysis of  $\text{CO}_2$  to multicarbon products such as ethylene, ethanol, acetate, propanol<sup>8</sup>. Because multicarbon products possess higher market values and are more energy concentrated<sup>1</sup>, intensive efforts have been devoted to improve the reaction selectivity towards the production of  $\text{C}_2$  and  $\text{C}_{2+}$  molecules. Examples of strategies for optimizing the Faradaic efficiency towards the production of  $\text{C}_{2+}$  species include alloying<sup>9–12</sup>, surface doping<sup>13,14</sup>, ligand modification<sup>15,16</sup>, and interface engineering<sup>17–20</sup>.

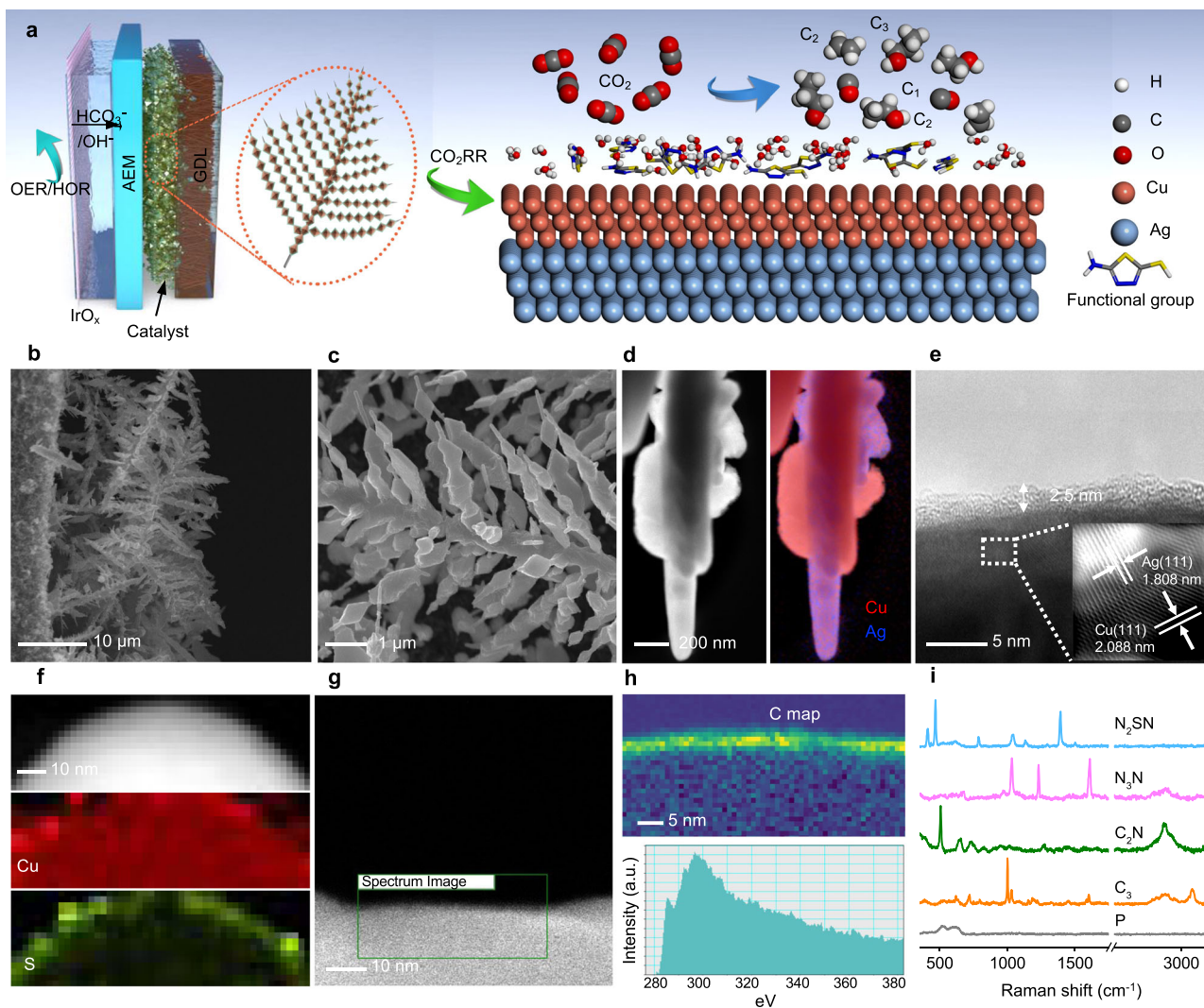
Designing Cu-based catalysts by adapting some of the concepts of molecular catalysts in order to finely tailor the behavior of the active sites of metallic surfaces is currently regarded as the long-standing interest for the controlled design of novel electrocatalytic materials. Increasing the oxidation state of copper has been suggested to improve the  $\text{CO}_2\text{RR}$  performance and notably the formation of  $\text{C}_{2+}$  species<sup>14,21,22</sup>. Various strategies are being explored to prepare  $\text{Cu}^{\delta+}$  by using controlled oxidation via plasma treatments or doping with boron and halides<sup>14,23–25</sup>. Alternatively, molecular engineering of either the electrolyte or the catalyst surface has recently been proposed for orienting the selectivity of the reaction by stabilizing intermediates, inhibiting proton diffusion, or acting as redox mediators during the electrochemical  $\text{CO}_2$  reduction reaction ( $\text{CO}_2\text{RR}$ )<sup>26–30</sup>. Organic species such as N-aryl pyridinium salts<sup>31,32</sup>, imidazole<sup>33–35</sup>, thiol<sup>36,37</sup>, and cysteamine<sup>38</sup> have been reported as an effective lever to tune the reaction selectivity toward the formation of specific products by stabilizing key reaction intermediates. Functionalization of alkyl chains can also lead to better  $\text{CO}_2\text{RR}$  performance by suppressing the competitive hydrogen evolution reaction (HER) via the creation of hydrophobic regions on the surface of the catalyst<sup>37,39,40</sup>.

Here we present an effective strategy to control the surface oxidation state of bimetallic Ag–Cu electrodes by using functionalization for tuning the oxidation state of  $\text{Cu}^{\delta+}$ . By combining Auger and X-ray absorption spectroscopies (XAS), we identified that the grafting of aromatic heterocyclic functional groups can efficiently dope the surface of Cu by withdrawing electrons from the metal surface leading to the formation of  $\text{Cu}^{\delta+}$  species. Compared to pristine non-functionalized and alkyl-functionalized electrodes, the modified electrodes display a clear improvement of the reaction rates and Faradaic efficiency towards the production of  $\text{C}_{2+}$  products. Operando Raman and X-ray absorption spectroscopy (XAS) suggest that the presence of  $\text{Cu}^{\delta+}$  with  $0 < \delta < 1$ —due to the *p*-doping of the Cu surface—favors the formation of adsorbed CO with the atop conformation which is a known key intermediate species involved in the C–C coupling step associated with the formation of multicarbon products. When assembled in a membrane electrode-assembly electrolyzer, the catalyst delivers a Faradaic efficiency (FE) for  $\text{C}_{2+}$  products of  $80 \pm 1\%$  and a total  $\text{C}_{2+}$  energy efficiency (EE) of 20.3% for the full cell.

## Results

**Catalyst design and characterization.** We fabricated the functionalized bimetallic catalyst by using a two-step strategy based

on the controlled electrodeposition of Ag and Cu followed by the modification of the catalyst surface via functionalization (Fig. 1a). The Ag–Cu electrodes were prepared by firstly depositing Ag on gas diffusion electrodes (GDE) using pulsed electrodeposition. The silver structure grows in the form of a dendritic fish-bone structure with sharp Ag nanoneedles (Supplementary Fig. 1). The Ag layer was then used as a scaffold for the deposition of copper. The final structure of the catalyst on the GDE electrodes is found to be porous where Cu is preferentially deposited on Ag (Fig. 1b, c and Supplementary Fig. 2). The catalytic performance of pure Cu and Ag–Cu electrodes were systematically investigated (Supplementary Figs. 2 and 3), and our results indicated that appropriate loading of Ag contributes to the enhancement of the formation of CO, which may further facilitate  $\text{C}_{2+}$  production on copper. And the optimum composition is 15%<sub>at.</sub> Ag in Ag–Cu (labeled as 15%<sub>at.</sub> Ag–Cu). To control the oxidation state of Cu, we sought to functionalize the catalyst with thiol molecules via dip coating. We selected thiadiazole ( $\text{N}_2\text{SN}$ ) and triazole ( $\text{N}_3\text{N}$ ) derivatives as electron-deficient functional molecules to react with the surface of the catalyst<sup>41–44</sup> (Supplementary Fig. 4). For comparison, the bimetallic electrodes were also modified with 1-propanethiol ( $\text{C}_3$ ) and cysteamine ( $\text{C}_2\text{N}$ ) as model short alkyl and alkyl amine functional groups (Supplementary Fig. 4 and Supplementary Figs. 5c, d). The modification of the electrode is clearly visible from the change of the water contact angle that varies between  $86^\circ$  and  $129^\circ$  depending on the nature of the functional groups compared to  $84^\circ$  for the pristine catalyst (Supplementary Fig. 6). To verify the presence of the functional groups, we performed energy-dispersive X-ray spectroscopy (EDS) analyses in a SEM. The corresponding elemental maps at low magnification show the uniform distribution of S, N, and C on Ag–Cu electrode. A thin amorphous layer is observed under high-resolution TEM at the surface of the catalyst with a thickness of  $\approx 2.5$  nm which also corresponds to an increase of the S signal in the corresponding EDS elemental map (Figs. 1d–f and Supplementary Fig. 7). The existence of an organic layer on the Ag–Cu electrodes is further confirmed by the high-angle annular dark-field scanning transmission electron microscopy (HAADF-STEM) and the electron energy-loss spectroscopy (EELS) mapping of the carbon element. Remarkably, the EELS spectrum of the C–K edge displays fine structural characteristics of carbon linked to heteroatoms at  $\approx 292$  eV (Figs. 1g, h and Supplementary Fig. 8). Raman and Fourier transformed infrared (FTIR) spectroscopies were also used to further confirm the successful attachment of the functional groups on the surface of the catalyst (Fig. 1i and Supplementary Fig. 9). The Raman signatures of the different grafted molecules were detected on the surface of the Ag–Cu electrodes, while strong FTIR bands at 1303, 1584, and  $1622\text{ cm}^{-1}$  are only presented on  $\text{N}_2\text{SN}$ -,  $\text{N}_3\text{N}$ - and  $\text{C}_2\text{N}$ -functionalized Ag–Cu electrodes and attributed to the C–C or C–N stretching, the  $\text{NH}_2$  scissor and the C–N stretching modes respectively<sup>45–47</sup> (Supplementary Fig. 9). The successful functionalization with thiadiazole and triazole is further confirmed from the deconvolution of the X-ray photoelectron spectra from the  $\text{S}2p$  and  $\text{N}1s$  regions respectively (Supplementary Figs. 10b, c). The peak of  $\text{S}2p$  was deconvoluted into three doublets at 162.75, 164.23, and 168.31 eV for the  $\text{S}2p_{3/2}$ , corresponding to S–H and S–C bonds on both thiadiazole and triazole, respectively<sup>48</sup>. Analogously, the  $\text{N}1s$  spectrum (Supplementary Fig. 10c) can be divided into three components at 398.24, 399.63, and 400.70 eV, which reflects the existence of N–N, C–N, and N–H bonds on the surface of functionalized electrodes. The presence of crystalline Ag and Cu on the gas diffusion electrode was further observed from the X-ray diffraction patterns, whereas the presence of distinct peaks from the Ag and Cu facets agrees with the absence of alloy structure of the bimetallic catalyst (Supplementary Fig. 11). To



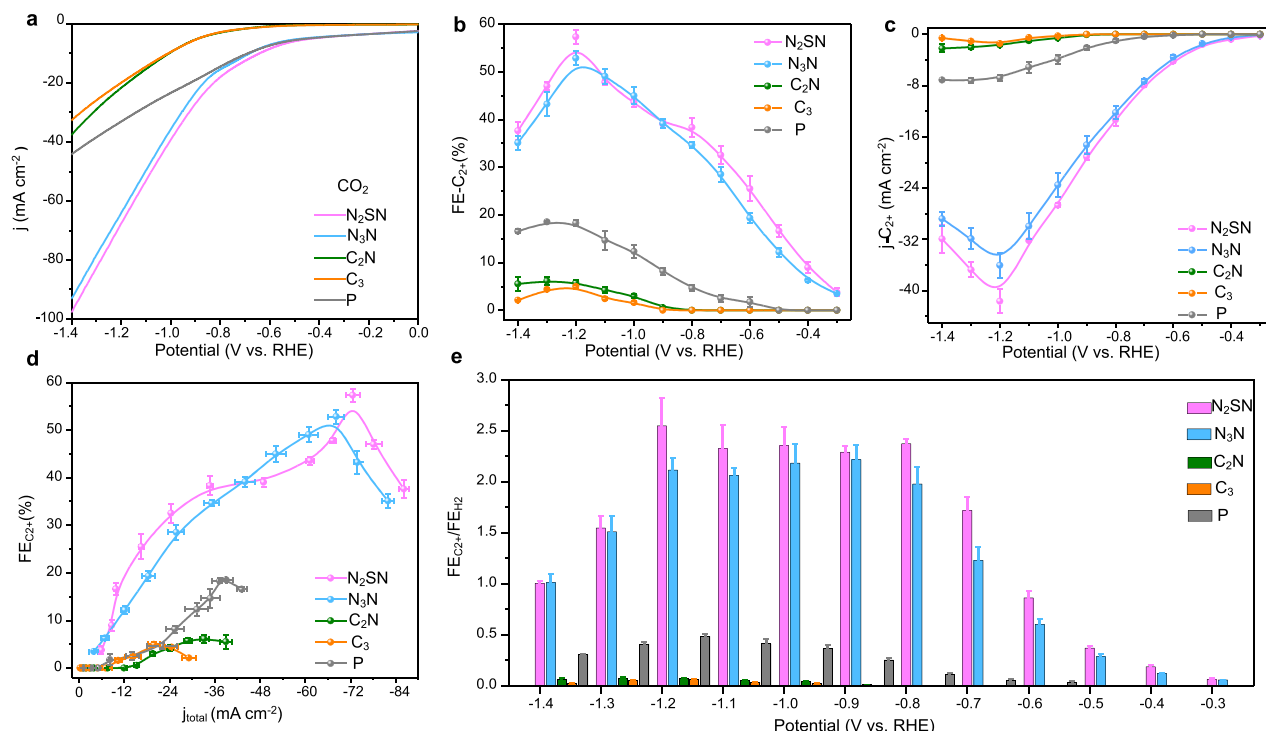
**Fig. 1 Structural and elemental composition of the functionalized Ag-Cu catalysts.** **a** Schematic representation of the functionalized Ag-Cu electrodes in a membrane electrode assembly. **b, c** Cross-section (**b**) and top-view (**c**) scanning electron microscope (SEM) images of the functionalized hierarchical Ag-Cu catalyst on a gas diffusion electrode (GDE). **d** High-angle annular dark-field scanning transmission electron microscopy (HAADF-STEM) image (left) and corresponding Cu (red) and Ag (blue) EDS elemental maps of N<sub>2</sub>SN-functionalized Ag-Cu (right). **e** High-resolution transmission electron microscope (HR-TEM) micrograph of the N<sub>2</sub>SN-functionalized electrode (**e**). **f** HAADF-STEM image and the corresponding Cu and S EDS elemental maps taken from a section of Cu surface on the N<sub>2</sub>SN-functionalized Ag-Cu electrode. **g** HAADF-STEM image of the Cu surface of N<sub>2</sub>SN-functionalized Ag-Cu. **h** (top), Electron energy-loss spectroscopy (EELS) elemental mapping of C taken from the area marked by the box in **g**. **h** (bottom), EELS spectrum of the C-K edge with fine structures characteristics of carbon linked to heteroatoms from N<sub>2</sub>SN layer on the Cu surface. **i** Raman spectra of pristine (non-functionalized) Ag-Cu (gray), C<sub>3</sub>-functionalized Ag-Cu (orange), C<sub>2</sub>N-functionalized Ag-Cu (green), N<sub>3</sub>N-functionalized Ag-Cu (purple) and N<sub>2</sub>SN-functionalized Ag-Cu (blue).

clarify the orientation of the aromatic heterocycles on the catalyst surface, we carried out density functional theory (DFT) calculations to estimate the total energy and the binding energy of thiadiazole on Cu using a model with 5 Cu (111) slabs (Supplementary Figs. 12 and 13). Among the different configurations tested, the adsorption of thiadiazole is more stable when the N<sub>2</sub>-N<sub>3</sub> nitrogen atoms of the diazole sit on Cu (111) and the binding energy is estimated to be  $-1.08$  eV—at least  $0.37$  eV lower than for the other configurations (Supplementary Table 1).

**CO<sub>2</sub> electroreduction performance in H cell.** The functionalized electrodes were electrochemically tested in a H-cell reactor using Argon and CO<sub>2</sub>-saturated  $0.5$  M KHCO<sub>3</sub> electrolyte solutions. Figure 2a shows that thiadiazole (N<sub>2</sub>SN) and triazole (N<sub>3</sub>N) functionalized electrodes exhibit the highest current density and lowest onset potential in CO<sub>2</sub>-saturated solution. We then

evaluated the Faradaic efficiency (FE) by using nuclear magnetic resonance (NMR) and gas chromatography (GC) (See details in the Methods section). H<sub>2</sub>, CO, formate, CH<sub>4</sub>, and C<sub>2+</sub> products were formed on the bimetallic electrode (Supplementary Fig. 14). Remarkably, the Faradaic efficiency for C<sub>1</sub> and H<sub>2</sub>—obtained via the CO<sub>2</sub>RR and HER—decreased after functionalization with thiazole and thiadiazole, while the FE for C<sub>2+</sub> products sharply increases (Fig. 2b). Ethylene and ethanol are the major C<sub>2+</sub> products detected, together with a trace amount of acetate and n-propanol (Supplementary Figs. 14 and 15). The FE for C<sub>2+</sub> on N<sub>2</sub>SN- and N<sub>3</sub>N-functionalized electrodes are estimated to 57.3% and 51.0% at  $-1.2$  V versus the reversible hydrogen electrode (vs. RHE) compared to only 18% for the pristine catalyst corresponding to enhancements of 3.1 and 2.8 folds respectively (Fig. 2b). The selectivity towards the formation of C<sub>2+</sub> products for both thiazole and thiadiazole functional groups increases





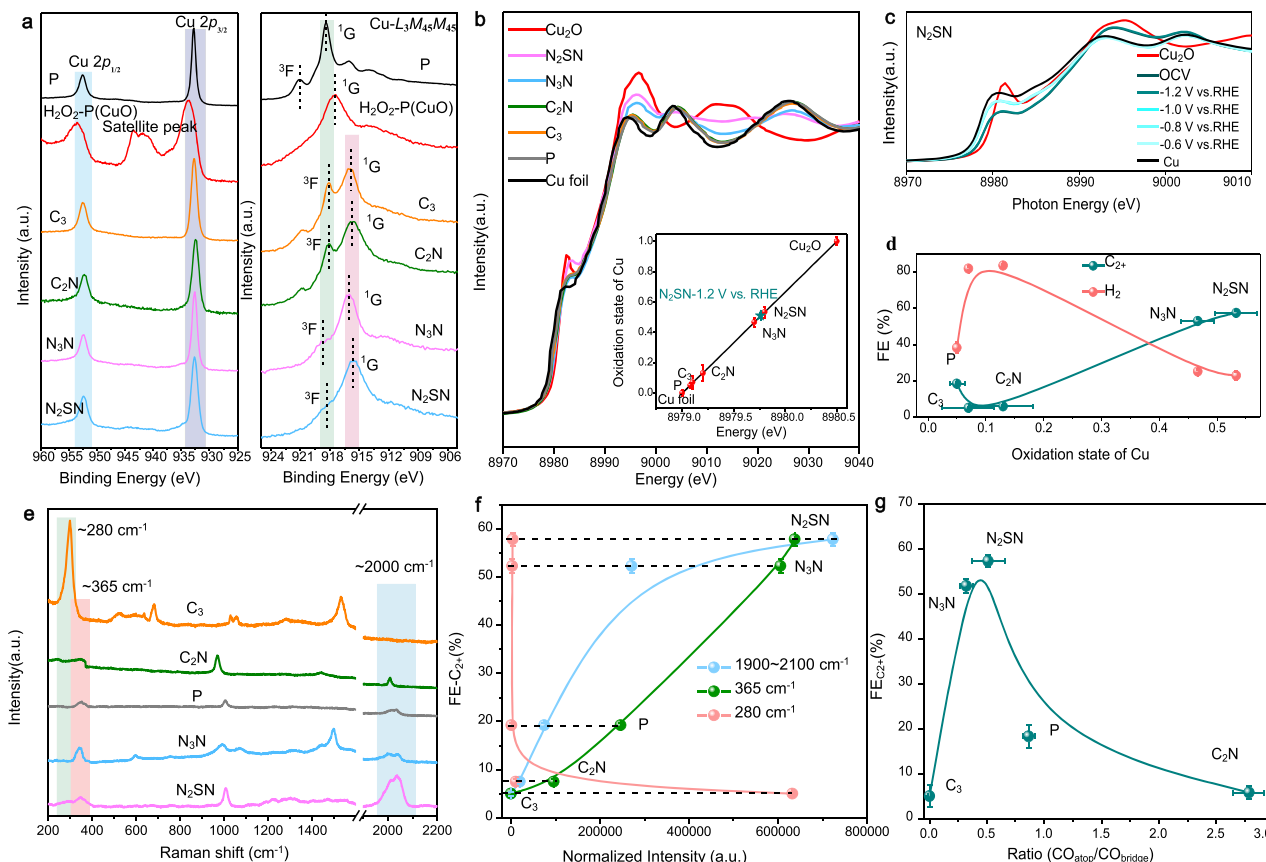
**Fig. 2** CO<sub>2</sub>RR performance of the functionalized Ag-Cu electrodes in a H-cell. **a** Linear scan voltammetry (LSV) curves measured for different samples: N<sub>2</sub>SN, N<sub>3</sub>N, C<sub>2</sub>N, C<sub>3</sub> functionalized Ag-Cu compared to pristine (P) Ag-Cu in CO<sub>2</sub>-saturated 0.5 M KHCO<sub>3</sub> at electrochemical potential (V) from 0 to -1.4 V vs. RHE. Scan rate, 20 mV s<sup>-1</sup>. **b** Faradaic efficiency (FE) values for C<sub>2+</sub> products on different samples at various potentials ranging from -0.3 to -1.4 V vs. RHE and measured in 0.5 M KHCO<sub>3</sub>. **c** j-V plots of the partial current densities for the C<sub>2+</sub> products (ethylene and ethanol). **d** Relationships between the FE for C<sub>2+</sub> and the total current density for all the catalysts. **(e)**, Selectivity for C<sub>2+</sub> products over hydrogen based on the ratio in FEs of C<sub>2+</sub> and hydrogen. The error bars in **b-e** correspond to the standard deviation of three independent measurements.

continuously with increasing voltage from -0.3 to -1.2 V vs. RHE and starts decreasing after -1.3 V, whereas the values of FE for C<sub>1</sub> products and H<sub>2</sub> exhibit a volcano-shaped dependence with the applied potentials (Supplementary Figs. 16a, b). This leads to an obvious enhancement of the specific current density for C<sub>2+</sub> products ( $j_{C_{2+}}$ ) up to 5 folds at -1.2 V vs. RHE (Fig. 2c). Conversely, the functionalization of the Ag-Cu electrodes with short alkyl or aminoalkyl chains does not suppress the HER pathway nor improve the CO<sub>2</sub>RR activity (Fig. 2d). C<sub>2</sub>N- and C<sub>3</sub>-modified catalysts clearly display lower activities towards the CO<sub>2</sub>RR, notably with minimal production of C<sub>2+</sub> species and a relatively large FE for the evolution of H<sub>2</sub>. Our results, therefore, highlight the importance of the nature of the functional groups on the CO<sub>2</sub>RR performance. To better evaluate the selectivity of C<sub>2+</sub> products on thiadiazole- and triazole-functionalized Ag-Cu electrodes, we calculated the ratio in FE for C<sub>2+</sub> products and hydrogen ( $FE_{C_{2+}}/FE_{H_2}$ ) (Fig. 2e). Compared with pristine and alkyl-functionalized electrodes, both N<sub>2</sub>SN and N<sub>3</sub>N functional groups present the largest  $FE_{C_{2+}}/FE_{H_2}$  ratios—illustrating that the functionalization with aromatic heterocycles efficiently directs the reaction pathway towards the formation of C<sub>2+</sub> products while suppressing the HER. To get a more accurate estimation of the intrinsic CO<sub>2</sub>RR performance of the functionalized Ag-Cu electrodes, we estimated the electrochemically active surface area of Cu (Cu ECSA) and Ag (Ag ECSA) for the 15 at.% Ag-Cu and the N<sub>2</sub>SN-15 at.% Ag-Cu catalysts using Pb underpotential deposition (Pb UPD) (Supplementary Figs. 17, 18 and Supplementary Table 2). The partial current densities for C<sub>2+</sub> products measured in H-cell were normalized by the ECSA values for Cu. Remarkably, we found that the ECSA-normalized partial current density on N<sub>2</sub>SN functionalized Ag-Cu is 5.3 mA cm<sup>-2</sup>, which is around

five times larger than that for the pristine 15 at.% Ag-Cu catalyst (Supplementary Fig. 18). Electrochemical impedance spectroscopy (EIS) measurements were performed to explore the charge transfer processes on the surface of the different electrodes during the electrolysis of CO<sub>2</sub>. The charge transfer resistance of the N<sub>2</sub>SN- and N<sub>3</sub>N- functionalized electrodes is not substantially perturbed compared to that of the pristine bimetallic catalyst (Supplementary Fig. 19). On the contrary, the resistance is significantly larger in the case of electrodes functionalized with 1-propanthiol and cysteamine indicating that the charge transfer is strongly affected; likely due to the strong hydrophobicity of the surface of the alkyl-functionalized catalyst.

To gauge the stability of the functionalization, we operated the electrodes at a potential of -1.2 V vs. RHE for more than 20 h in the H-cell reactor, while recording the current density and continuously analyzing the products of the reaction (Supplementary Fig. 20). The N<sub>2</sub>SN- and N<sub>3</sub>N-functionalized electrodes demonstrated stable performance with a retention of the current density of 94% and 91% respectively—sharply improved compared to that of pristine Ag-Cu at 78%. The FE for C<sub>2+</sub> of N<sub>2</sub>SN and N<sub>3</sub>N functionalized Ag-Cu electrodes remains as high as 54% and 46.5% after 20 h, which demonstrates that the selectivity for the reaction pathway on the surface of the electrode is not modified during electrolysis. To further confirm the apparent stability of the functionalized electrode, we performed XPS spectroscopy to evaluate the N:Cu ratio after 30 min, 1 h, 24 h, and 100 h. The ratio is found to be virtually constant suggesting a robust grafting of the functional groups on the catalyst surface (Supplementary Figs. 21, 22 and Supplementary Table 3).

**Ex situ and in situ mechanistic investigations.** Next, we sought to explain the fundamental mechanism responsible for the



**Fig. 3 Physical characterizations of the functionalized electrodes using XPS and operando Raman and XAS spectroscopy.** **a** High-resolution spectra of the Cu 2p regions and Cu  $L_{3}M_{45}M_{45}$  Auger transition modes measured by ex situ X-ray photoelectron spectroscopy (XPS) of pristine Ag-Cu sample (P),  $H_2O_2$ -treated Ag-Cu ( $H_2O_2$ -P),  $C_3$ -,  $C_2N$ -,  $N_3N$ - and  $N_2SN$ - functionalized Ag-Cu electrodes. The different colored shading areas represent the peaks of Cu  $2p_{1/2}$  (blue), Cu  $2p_{3/2}$  (light purple),  $^1G$  (pink) and  $^3F$  (light green), respectively. **b** Ex situ and operando Copper K-edge X-ray absorption near-edge structure (XANES) spectra of pristine and functionalized Ag-Cu electrodes. Inset: Average oxidation state of copper for the corresponding electrodes. **c** Operando Cu K-edge XANES spectra of  $N_2SN$ - functionalized Ag-Cu electrode during  $CO_2RR$ . The measurements were performed after holding the applied potential for 30 min. **d** Evolution of the Faradaic efficiency for  $C_{2+}$  and  $H_2$  measured at  $-1.2$  V vs. RHE with the oxidation state of Cu. **e** Operando Raman spectra for pristine,  $C_3$ -,  $C_2N$ -,  $N_3N$ - and  $N_2SN$ -, functionalized Ag-Cu during  $CO_2RR$  at a fixed potential of  $-1.2$  V vs. RHE. The different colored shading areas represent the peaks of  $280\text{ cm}^{-1}$  (light green),  $365\text{ cm}^{-1}$  (pink), and  $2000\text{ cm}^{-1}$  (blue), respectively. The spectra for all the other potentials are presented in Supplementary Fig. 26. **f** Relationship between the FE for  $C_{2+}$  products and the Raman peak areas of the frustrated rotational mode of CO at  $280\text{ cm}^{-1}$ , the Cu-CO stretch at  $365\text{ cm}^{-1}$ , and the  $C\equiv O$  stretch at  $1900\text{--}2120\text{ cm}^{-1}$ , respectively. **g** Relationship between the FE for  $C_{2+}$  molecules and the ratio of  $CO_{atop}$  and  $CO_{bridge}$  on different Ag-Cu electrodes. The ratio was obtained from the integrated areas of the deconvoluted peaks of the Raman spectra (Supplementary Fig. 27). The error bars in **b**, **d**, **f**, and **g** correspond to the standard deviation of three independent measurements.

improved  $CO_2RR$  properties using ex situ X-ray photoelectron spectroscopy (XPS) and operando XAS. XPS was firstly used to characterize the surface composition and determine the oxidation state of Cu. From the Cu2p region, no significant change of the oxidation state of Cu can be detected from the functionalized catalysts (Fig. 3a, left). For comparison, after exposure to  $H_2O_2$ , the electrodes are clearly oxidized as confirmed by the apparition of Cu $2p_{3/2}$  signals at binding energy at 934.6 eV and the satellite peak at 942.6 eV, which is attributed to the formation of  $Cu^{2+}$ <sup>48</sup>. Our XPS results confirm that functionalization does not lead to a dramatic modification of the oxidation state of the surface of the Cu since there were no evident oxidation peaks in Cu2p. It is well-known that the small change of binding energy between  $Cu^{1+}$  and  $Cu^0$  makes the precise identification of  $Cu^{1+}$  impossible from the Cu2p regions<sup>22</sup>. To overcome this limitation, we, therefore, used the Cu Auger  $L_{3}M_{45}M_{45}$  transition to qualitatively discuss the presence of  $Cu^{1+}$  in functionalized Ag-Cu as this mode is known to be more sensitive to the modification of the electron density on the d-band of the metals<sup>49,50</sup>. It is well-known that the formation of Cu Auger  $L_{3}M_{45}M_{45}$  transition comes from

the  $L_3$  ( $2p_{3/2}$ ) core-hole decay during the Auger process, in which two  $M_{45}$  ( $3d$ ) electrons are responsible for the formation of a final  $3d^8$  configuration of Cu<sup>51–54</sup>. The right panel of Fig. 3a presents the two final-state terms splitting from L–S coupling  $^1G$  and  $^3F$ , whose peak energy positions provide information on the valence configuration of Cu<sup>22,51</sup>. According to the previous investigations, the peak energy positions of  $^1G$  for the different oxidation states copper are detected at 917.1, 915.8, and 918.0 eV for CuO,  $Cu_2O$ , and Cu, respectively<sup>51–53</sup>. Such differences are mainly due to the modification of the  $3d$  and  $O2p$  electron configurations<sup>54</sup>. Compared with  $Cu^0$ , the  $^1G$  peak in copper oxide is downshifted in energy and presents a broader shape, while the  $^3F$  peak is solely visible in the case of  $Cu^0$ <sup>22,55</sup>. For pristine and  $C_3$ - and  $C_2N$ -functionalized Ag-Cu, we observed that the energy positions of the  $^1G$  peak are located at 918.3 eV (pristine), 915.9 eV ( $C_3$  and  $C_2N$ ), respectively, while the distinct  $^3F$  peak is detected at 918.2 eV for both  $C_3$ - and  $C_2N$ -Ag-Cu, in agreement with the existence of  $Cu^0$  (Supplementary Table 4). Conversely, in the case of the  $N_2SN$ - and  $N_3N$  samples, the  $^1G$  peak is identified at 915.8 and 916.0 eV, respectively, which is lower than that for  $Cu^0$  and

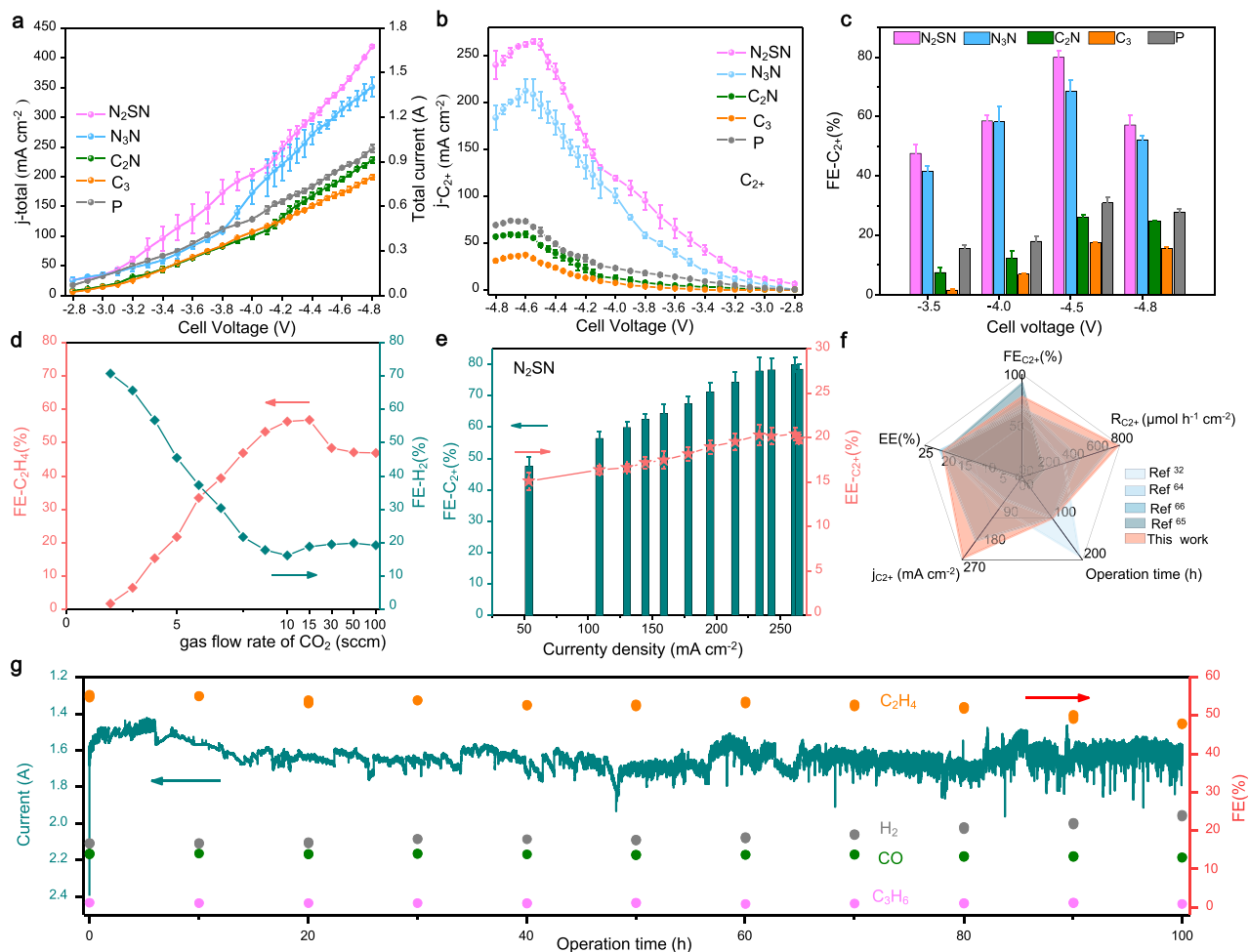
$\text{Cu}^{2+}$  and close to that of  $\text{Cu}^{1+}$  (915.8 eV). We also note that the  $^{3}\text{F}$  peak is also visible for both samples pointing out the presence of  $\text{Cu}^0$ . These results indicate that the valence state of the  $\text{N}_2\text{SN}$  and  $\text{N}_3\text{N}$  samples may be  $\text{Cu}^{\delta+}$  with  $0 < \delta < 1$ .

To precisely evaluate the electronic states of copper on functionalized Ag–Cu electrodes and eliminate the air effect on the electrode, we then performed in situ X-ray absorption near-edge spectroscopy (XANES). The absorption edges of functionalized catalysts reside between those of copper metal ( $\text{Cu}^0$ ) and  $\text{Cu}_2\text{O}$  ( $\text{Cu}^{1+}$ ) used as references (Fig. 3b). To better compare the influence of the different functional groups, we estimated the copper oxidation state as a function of copper K-edge energy shift (Fig. 3b). The oxidation state of copper in the  $\text{N}_2\text{SN}$ - and  $\text{N}_3\text{N}$ -functionalized Ag–Cu was found to be +0.53 and +0.47 respectively—pointing out the withdrawing properties of the selected heterocycles (Supplementary Table 5). Remarkably,  $\text{C}_3$ - and  $\text{C}_2\text{N}$ -functionalized samples displayed a minimal shift by comparing with pristine Ag–Cu electrode and the Cu reference, suggesting the alkyl groups are not prone to modulate the oxidation state nor the coordination environment of Cu. To explore the stability of the electron-withdrawing ability of the grafted heterocycles, we measured the oxidation state of Cu post  $\text{CO}_2\text{RR}$  using in situ XANES. After 30 min of operation at  $-1.2$  V vs. RHE in the testing cell, the oxidation state of copper was estimated be +0.51 (inset Figs. 3b, c). This value is similar to that obtained from the freshly prepared samples: +0.53, which demonstrates the stability of the oxidation state of the functionalized Ag–Cu electrodes. Similarly, no obvious shift of the Cu K-edge was observed from the in situ XANES measurements at increasing applied potential up to  $-1.2$  V vs. RHE and the spectra virtually overlap. This confirms the robustness of the oxidation state of the Cu thanks to the stable attachment of the functional groups (Fig. 3c and Supplementary Fig. 23). To better understand the role of  $\text{Cu}^{\delta+}$  on the  $\text{CO}_2\text{RR}$  properties, we investigated the influence of the copper oxidation state on the FE for  $\text{C}_{2+}$  and  $\text{H}_2$  (Fig. 3d). Remarkably, we identified a strong correlation between the oxidation state and the FE for  $\text{C}_{2+}$ , which points out that the larger oxidation state of Cu benefits the  $\text{CO}_2\text{RR}$  properties and the formation of  $\text{C}_{2+}$  products in line with recent findings from the literature<sup>51,56</sup>. To finally exclude any hydrophobicity effect on the enhanced selectivity for formation of  $\text{C}_{2+}$  products, we sought to prepare functionalized electrodes with similar water contact angles as for pristine Cu counterparts. We identified 1,3,4-thiadiazole-2,5-dithiol,  $\text{N}_2\text{SS}$ , that shares the same thiadiazole structure but exhibits a water contact angle of  $81^\circ$  compared to  $83.9^\circ$  for pristine non-functionalized Cu. In H-cell configuration, the Faradaic efficiency for the formation of  $\text{C}_{2+}$  molecules on  $\text{N}_2\text{SS}$ -Ag–Cu reaches 43.7% at  $-1.2$  V vs. RHE compared to only 18.3% for Ag–Cu (Supplementary Fig. 24). To further demonstrate that the water contact angle has limited influence on the improved  $\text{C}_{2+}$  selectivity, we plotted the Faradaic efficiency as a function of the water contact angle. No relationship is clearly observed, emphasizing that the origin of the improved selectivity for  $\text{C}_{2+}$  is not primarily due to the surface properties of the Cu electrodes but rather the electron-withdrawing nature of the aromatic heterocycles as evidenced by our operando X-ray absorption spectroscopy measurements (Supplementary Figs. 6, 24 and 25).

It is well-known that the formation of multicarbon products in  $\text{CO}_2\text{RR}$  proceeds via the formation of the  $^*\text{CO}$  intermediate, and its subsequent dimerization in  $\text{CO}=\text{CO}$  or  $^*\text{CO}-\text{COH}$  intermediates<sup>57–59</sup>. To gain insight into the C–C coupling mechanism on functionalized and pristine Ag–Cu during  $\text{CO}_2\text{RR}$ , the surface of the catalysts was probed using operando Raman spectroscopy in order to elucidate the interactions between the

catalyst surface and the adsorbed  $^*\text{CO}$  intermediate (Fig. 3e and Supplementary Fig. 26, and Supplementary Table 7). The presence of the surface-adsorbed  $^*\text{CO}$  was identified from the vibration modes at  $\approx 280$  and  $\approx 365\text{ cm}^{-1}$  that originate from the Cu–CO frustrated rotation and Cu–CO stretch, respectively<sup>60,61</sup>. The broadband in the range of  $1900\text{--}2120\text{ cm}^{-1}$  was assigned to the  $\text{C}\equiv\text{O}$  stretch. To confirm that the detected signals are solely due to the  $\text{CO}_2\text{RR}$ , the Raman spectra were also recorded using Ar-saturated  $\text{K}_2\text{SO}_4$  as a controlled experiment and no peaks were detected at these frequencies (Supplementary Fig. 26f). The Raman vibration modes around  $1900\text{--}2120\text{ cm}^{-1}$  have recently been the focus of several studies and there is currently a general agreement that the high frequency region ( $>2000\text{ cm}^{-1}$ ) and the low-frequency region ( $1900\text{--}2000\text{ cm}^{-1}$ ) originates to atop-bound CO and bridge-bound CO. Atop ( $\text{CO}_{\text{atop}}$ ) and bridge ( $\text{CO}_{\text{bridge}}$ ) configurations correspond to a CO bound on top of one Cu atom and between two Cu atoms, respectively<sup>50,62,63</sup>. Compared to pristine as well as 1-propanthiol- and cysteamine-functionalized electrodes,  $\text{N}_2\text{SN}$ - and  $\text{N}_3\text{N}$ -functionalized Ag–Cu exhibit the relatively intense signals at 365 and  $1900\text{--}2000\text{ cm}^{-1}$ . Our systematic investigations revealed that the intensities of both regions are also found to increase with the overpotentials<sup>32</sup> (Supplementary Fig. 26a, b). Importantly, we observed that there is an obvious relationship between the peaks at  $365\text{ cm}^{-1}$  and  $1900\text{--}2100\text{ cm}^{-1}$  and the Faradaic efficiency towards the formation of  $\text{C}_{2+}$  products (Fig. 3f) by following literatures to fit these peaks area<sup>32,50</sup>. These results, therefore, point out the strong correlation between the density of adsorbed  $^*\text{CO}$  on the catalyst surface and the formation of C–C bonds in agreement with the  $^*\text{CO}$  being the key intermediate involved in the dimerization reaction and the formation of  $\text{C}_{2+}$  products. We note that 1-propanethiol functionalized Ag–Cu electrodes display the most intense peak at  $280\text{ cm}^{-1}$  whereas no peak is detected at  $1900\text{--}2120\text{ cm}^{-1}$ . This indicates the adsorbed  $^*\text{CO}$  is not present in the form of  $\text{CO}_{\text{atop}}$  nor  $\text{CO}_{\text{bridge}}$  configurations. We speculate that the hydrophobic surface of the 1-propanethiol functionalized Ag–Cu induces the existence of a high energy barrier for the protons to reach the surface of the catalyst that prevents the stabilization of the  $^*\text{CO}$  in these bound configurations as previously proposed for other transition metals<sup>50</sup>. Interestingly, we observed a volcano-shaped relationship between the Faradaic efficiency for  $\text{C}_{2+}$  products and the ratio of atop-bound CO to bridge-bound CO on the surface of Ag–Cu (Fig. 4g and Supplementary Fig. 27). The Faradaic efficiency reaches a maximum for a ratio of  $\text{CO}_{\text{atop}}$  to  $\text{CO}_{\text{bridge}}$  of 0.4–0.5 corresponding to thiadiazole and triazole-functionalized catalysts, while the ratio decreases for 1-propanethiol and increases for pristine and cysteamine respectively. We hypothesized that the density of  $\text{CO}_{\text{atop}}$  and  $\text{CO}_{\text{bridge}}$  on the surface of the catalysts is influenced by the electron-withdrawing ability of the heterocycles as suggested by the volcano-shaped relationship between the oxidation state of Cu and the ratio of  $\text{CO}_{\text{atop}}$  to  $\text{CO}_{\text{bridge}}$  (Supplementary Fig. 28). Overall our ex situ and operando characterizations of the modified bimetallic catalyst establish an obvious correlation between the electron-withdrawing ability of the functional groups and the oxidation state of Cu, which translate into a larger concentration of adsorbed  $^*\text{CO}$  on the electrode surface and ultimately a higher probability for  $^*\text{CO}$  to dimerize.

**$\text{CO}_2\text{RR}$  using a membrane electrode-assembly (MEA) flow electrolyzer.** To evaluate the potential of our approach for practical applications towards the electrosynthesis of  $\text{C}_{2+}$  products, we integrated the different functionalized bimetallic



**Fig. 4** CO<sub>2</sub>RR performance of the functionalized Ag-Cu electrodes measured in MEA electrolyzers. **a** Relationship between the current and cell voltage relationship of pristine, C<sub>3</sub>-, C<sub>2</sub>N-, N<sub>3</sub>N- and N<sub>2</sub>SN-functionalized electrodes. The CO<sub>2</sub>RR electrolysis was operated using CO<sub>2</sub> with a flow rate of 10 sccm, 0.1 M KHCO<sub>3</sub> anolyte with a flow rate of 30 mL min<sup>-1</sup>. **b** Corresponding partial current density for the C<sub>2</sub><sup>+</sup> products. **c** Comparison of FEs for C<sub>2</sub><sup>+</sup> on the different Ag-Cu electrodes measured at full-cell potentials ranging between -3.5 and -4.8 V. **d** Evolution of the Faradaic efficiency for C<sub>2</sub><sup>+</sup> and H<sub>2</sub> with the CO<sub>2</sub> flow rate. **e** Evolution of the FEs and full-cell energy efficiency (EE) for C<sub>2</sub><sup>+</sup> as a function of specific current densities for C<sub>2</sub><sup>+</sup> on the N<sub>2</sub>SN-functionalized Ag-Cu electrode. The error bars represent the standard deviation of three independent samples measured under different current densities. **f** Comparison of the performance metrics of the MEA electrolyzers based on N<sub>2</sub>SN-functionalized Ag-Cu cathodes with literature benchmark. For each report, the plotted values are those corresponding to the longest duration test<sup>32, 65–67</sup>. The references are from refs. 32, 65, 66, and 67. **g** CO<sub>2</sub>RR performance of N<sub>2</sub>SN-Ag-Cu catalyst at a full-cell potential of -4.55 V and with a 10 sccm feed in CO<sub>2</sub> over 100 h. The anolyte consisted in a 0.1 M KHCO<sub>3</sub> solution with a flow rate of 30 mL min<sup>-1</sup>. The blue line represents the current recorded during the extended CO<sub>2</sub>RR experiment (primary y axis). Each orange, gray, green, and purple spheres represent the FEs for C<sub>2</sub>H<sub>4</sub>, H<sub>2</sub>, CO and C<sub>3</sub>H<sub>6</sub> averaged from three independent measurements (secondary y axis). The error bars in **a**, **b**, **c**, and **e** represent the standard deviation of three independent measurements.

electrodes into 4 cm<sup>2</sup> membrane electrode-assembly (MEA) flow electrolyzers (Supplementary Fig. 29). The synthesized liquid products at the cathode were collected by using a cold trap connected to the cathode gas outlet. We also analyzed the liquid products in the anolyte to detect liquid products that may have crossed over the membrane electrolyte. We firstly scrutinized the activity of N<sub>2</sub>SN-functionalized Ag-Cu in a MEA electrolyzer by flowing Ar (used as a blank experiment) and CO<sub>2</sub> in the cathode compartment (Supplementary Fig. 30) and found that the catalyst can convert CO<sub>2</sub> when operating in a catholyte-free MEA system. We then characterized the current-voltage response of all the functionalized catalysts between -2.8 and -4.8 V and a constant flow of CO<sub>2</sub> of 10 standard cubic centimeters per minute (sccm) (Fig. 4a). The total current for the different Ag-Cu electrodes increased from 4·10<sup>-2</sup> A up to over 1.6 A. The N<sub>2</sub>SN-functionalized electrodes displayed the largest specific current density for C<sub>2</sub><sup>+</sup> at 261 mA cm<sup>-2</sup> together with the maximum FE

for C<sub>2</sub><sup>+</sup> products and the lowest FE for H<sub>2</sub> at ~80% and 14%, respectively (Fig. 4b and Supplementary Figs. 31a, 32a). Remarkably the selectivity for the C<sub>2</sub><sup>+</sup> products increases together with the electrolysis response when increasing the operating potential of the full cell. The catalytic activity towards the competitive HER concurrently decreases up to -4.55 V (Fig. 4b and Supplementary Fig. 32c). Compared to pristine Ag-Cu, the FE for C<sub>2</sub><sup>+</sup> products from N<sub>2</sub>SN- and N<sub>3</sub>N-functionalized electrodes demonstrated an average enhancement for C<sub>2</sub><sup>+</sup> of 3.1 and 2.6 folds respectively over the extended range of full-cell potentials (Fig. 4c and Supplementary Fig. 33). To further assess the performance of the functionalized Ag-Cu electrodes in the MEA devices, we calculated the ratio of  $j_{C_2^+}$  to  $j_{C_1}$  for the different potentials. We found that Ag-Cu functionalized with thiadiazole displays the largest values and the ratio reaches at a maximum value of ~10 at a current density of 261.4 mA cm<sup>-2</sup> (Supplementary Fig. 34). These results demonstrate that the controlled



orientation of the reaction pathways towards the synthesis of ethanol and ethylene observed in the H-cell reactors can be transposed to the MEA devices (Supplementary Fig. 29). We also found that the total FE for gaseous products gradually decreased with the increase of the full-cell voltage indicating a shift toward the formation of liquid products at high operating potential. The Faradaic efficiency for ethanol and n-propanol reached 16.5% and 6.1% at a voltage of  $-4.4$  V (Supplementary Fig. 31a).

To better understand the influence of operating conditions on the CO<sub>2</sub>RR performance of the MEA device, we varied the CO<sub>2</sub> flow rate from 3 to 100 sccm at a constant full-cell potential of  $-4.55$  V. When using N<sub>2</sub>SN-functionalized Ag–Cu electrodes, the FE for ethylene reached a peak at 56% at  $\sim 10$  sccm (Fig. 4d) together with a sharply reduced FE for H<sub>2</sub> at only 15.2%. The selectivity for ethylene rapidly drops down to only  $\sim 5\%$  for a CO<sub>2</sub> flow rate of 3 sccm, suggesting that the feed in CO<sub>2</sub> is not sufficient to produce enough \*CO to dimerize on the surface of the catalyst. The relationships between CO<sub>2</sub> flow rates, cell voltages and Faradaic efficiencies for the main gas products (H<sub>2</sub>, CO and C<sub>2</sub>H<sub>4</sub>) were explored on N<sub>2</sub>SN-functionalized Ag–Cu electrodes and we found that the FE<sub>C<sub>2</sub>H<sub>4</sub></sub> decreases when increasing the CO<sub>2</sub> flow rate and the optimal flow rate is 10 sccm even when operating under high voltage and high current density (Supplementary Fig. 35). Conversely, the Faradaic efficiency for H<sub>2</sub> increases when increasing the CO<sub>2</sub> flow rate, which further demonstrates that the decrease in the C<sub>2</sub><sup>+</sup> performance is not caused by insufficient feed in CO<sub>2</sub>. We also estimated the full-cell energy efficiency (EE<sub>full-cell</sub>) for N<sub>2</sub>SN-functionalized Ag–Cu for the different operating potential. Both the FE and EE<sub>full-cell</sub> values for C<sub>2</sub><sup>+</sup> products increased with the increase of the current density and achieved a maximum FE<sub>C<sub>2</sub><sup>+</sup></sub> of  $\approx 80 \pm 1\%$  and an EE<sub>full-cell</sub> of 20.3% at a specific current density larger than 260 mA cm<sup>-2</sup> for the production of C<sub>2</sub><sup>+</sup> (Fig. 4e). By comparing the performance metrics of N<sub>2</sub>SN-functionalized Ag–Cu with previous literature benchmarks based on MEA devices, we observed that thiadiazole-functionalized Ag–Cu allows achieving outstanding performance notably thanks to a high CO<sub>2</sub>-to-C<sub>2</sub><sup>+</sup> conversion rate of 785  $\mu\text{mol h}^{-1} \text{cm}^{-2}$  (Fig. 4f).

We finally examined the stability of the N<sub>2</sub>SN-functionalized Ag–Cu electrodes in a full-cell MEA electrolyzer under continuous operation at a CO<sub>2</sub> flow rate of 10 sccm and a cell voltage of  $-4.55$  V. The performance of the cell was found to be stable over 100 h with an average FE of 51% for ethylene and an average current of around 1.6 A (Fig. 4g). After 100 h, the retention of the FE for ethylene and the current were estimated to be 48% and 1.58 A corresponding to retentions of 94% and 99%, respectively. The stability of the CO<sub>2</sub>RR properties is further accompanied by a high stability of the catalyst morphology and microstructure (Supplementary Fig. 36).

## Discussion

Our study describes an original and robust molecular engineering strategy to tune the oxidation state of Cu electrodes via functionalization. We identified that strong electron-withdrawing groups based on aromatic heterocycles can effectively orient the pathway of the CO<sub>2</sub>RR reactions towards the synthesis of C<sub>2</sub><sup>+</sup> molecules. Functionalization of the surface of a bimetallic Ag–Cu catalyst with thiadiazole and triazole derivatives led to an enhancement of the FE<sub>C<sub>2</sub><sup>+</sup></sub> up to  $\approx 80 \pm 1\%$ , corresponding to ratios of FE<sub>C<sub>2</sub><sup>+</sup></sub> to FE<sub>C<sub>1</sub></sub> and FE<sub>C<sub>2</sub><sup>+</sup></sub> to FE<sub>H<sub>2</sub></sub> of 10 and 5.3, respectively. By combining Auger and XANES spectroscopy we identified that the superior performance towards the CO<sub>2</sub>-to-C<sub>2</sub><sup>+</sup> conversion originates from the controlled p-doping of the Cu and presence of Cu<sup>δ+</sup> with  $0 < \delta < 1$ . The functionalized Ag–Cu electrodes were found stable, which translates into a prolonged production of C<sub>2</sub><sup>+</sup> products for  $>100$  h.

## Methods

**Chemicals.** Copper sulfates (CuSO<sub>4</sub>, 99%), silver nitrate (AgNO<sub>3</sub>, 99%), ammonium sulfate (99%), ethylenediamine (NH<sub>2</sub>CH<sub>2</sub>CH<sub>2</sub>NH<sub>2</sub>, 99.5%), potassium hydroxide (KOH, 90%), potassium bicarbonate (KHCO<sub>3</sub>, 99.7%), sulfuric acid (H<sub>2</sub>SO<sub>4</sub>, 99.99%), Iridium (III) chloride hydrate (IrCl<sub>3</sub>·xH<sub>2</sub>O, 99.9%), 5-Amino-1,3,4-thiadiazole-2-thiol (C<sub>2</sub>H<sub>3</sub>N<sub>3</sub>S<sub>2</sub>, 95%), 3-amino-1,2,4-triazole-5-thiol (C<sub>2</sub>H<sub>4</sub>N<sub>4</sub>S, 99%), cysteamine (C<sub>2</sub>H<sub>7</sub>NS, 99%) and 1-Propanethiol (C<sub>3</sub>H<sub>8</sub>S, 99%) were purchased from Sigma Aldrich. Nafion 117 and anion exchange membrane (Fumapem FAA-3-50), gas diffusion layer (Freudenberg, H23C6), and titanium mesh were obtained from Fuel Cell Store. All chemicals were used as received. All aqueous solutions were prepared using deionized water with a resistivity of 18.2 MΩ cm<sup>-1</sup>.

**Electrodes preparation.** Before depositing catalysts, gas diffusion electrode (GDE) was treated with sulfuric acid by sonicating 20 min. After acid treatment, the remaining acid was rinsed with deionized water for 5 min three times, and gas diffusion layer was dried at room temperature. To obtain the working electrodes, 15%<sub>at</sub> Ag–Cu catalysts were prepared through a pulse electrodeposition approach under CO<sub>2</sub> bubbling condition. Firstly, electrochemical deposition of the Ag catalyst was performed using a potentiostat (VSP potentiostat from Bio-Logic Science Instruments). The electrolyte used was composed of 0.01 M AgNO<sub>3</sub>, 0.6 M (NH<sub>4</sub>)<sub>2</sub>SO<sub>4</sub>, and 0.04 M ethylenediamine. Ag catalyst was electrodeposited on GDE at a current density of 15 mA cm<sup>-2</sup> with on- and off-time pulsing parameters of 0.25 and 3 s, respectively. Then, the Cu was electrodeposited on Ag at a constant current density of  $-400$  mA cm<sup>-2</sup> for 45 s to obtain the 15%<sub>at</sub> Ag–Cu electrode. The solution consisted of 0.2 M CuSO<sub>4</sub> and 1 M H<sub>2</sub>SO<sub>4</sub> with continuous CO<sub>2</sub> bubbling.

**Functionalization of the Ag–Cu electrodes.** The different functional groups (organic chemicals (5-Amino-1,3,4-thiadiazole-2-thiol (N<sub>2</sub>SN), 1,3,4-thiadiazole-2,5-dithiol (N<sub>2</sub>SS), 3-amino-1,2,4-triazole-5-thiol (N<sub>3</sub>N), cysteamine (C<sub>2</sub>N) and 1-Propanethiol (C<sub>3</sub>)) were dissolved in ethanol to a fixed concentration of 5 mM. The Ag–Cu electrodes were treated by the different functional solutions via drop-casting 20  $\mu\text{L}$  of the solution containing the different thiol reagents on the GDE. After 5 min, the electrode was washed with ethanol and dried under argon flow.

**Physical characterizations.** A field emission scanning electron microscope (TESCAN Mira3) was employed to observe the morphology of samples. Aberration-corrected high-resolution (scanning) TEM imaging (HR-(S)TEM), energy-dispersive X-ray spectroscopy (EDS) and spatially-resolved electron energy-loss spectroscopy (SR-EELS) were performed using a FEI Titan Cubed Themis microscope which was operated at 80 kV. The Themis is equipped with a double Cs aberration corrector, a monochromator, an X-FEG gun, a super EDS detector, and an Ultra High Resolution Energy Filter (Gatan Quantum ERS) which allows for working in Dual-EELS mode. HR-STEM imaging was performed by using high-angle annular dark-field (HAADF) and annular dark-field (ADF) detectors. SR-EELS spectra were acquired with the monochromator excited allowing an energy resolution of 1.1 eV with an energy dispersion of 0.4 eV pixel<sup>-1</sup>. Liquid products were quantified by 1H NMR spectroscopy (600 MHz Avance III Buker with a cryoprobe Prodigy TCI) using deionized water with 0.1% (w/w) of DSS (Sodium trimethylsilyl propane sulfonate) like internal standard for the quantification of the ethanol and formate. An 1D sequence water suppression with excitation sculpting with gradients (zgpg30) was used for the acquisition (Number of scan = 32, Delay D1 = 30 s). X-ray photoelectron spectroscopy (XPS) measurements were carried out on Thermo Electron ESCALAB 250 System using Al K $\alpha$  X-ray radiation (1486.6 eV) for excitation. Raman measurements were conducted using a Renishaw in Via Raman microscope and an  $\times 50$  objective (Leica) equipped with a 633 nm laser. Operando Raman measurements were carried out using a modified liquid-electrolyte flow cell. The spectra were recorded and processed using the Renishaw WiRe software (version 4.4). An Ag/AgCl electrode and a Pt plate were used as the reference and counter electrodes respectively. Ex situ X-ray absorption spectra at the copper K-edges and Operando X-ray absorption spectroscopy (XAS) measurements at the copper K-edges were collected at Beijing Synchrotron Radiation Facility (BSRF) on beamline 1W1B and the SOLEIL synchrotron SAMBA beamline, respectively.

**Operando X-ray absorption spectroscopy (XAS).** Operando XAS measurements at the copper K-edges were collected at Beijing Synchrotron Radiation Facility (BSRF) on beamline 1W1B and the SOLEIL synchrotron SAMBA beamline, respectively. Operando XAS measurements of functionalized Ag–Cu electrodes were obtained by using a Si (111) monochromator at the Cu K-edge for energy selection with the beam size of  $1 \times 0.5$  mm. A 13-channel Ge detector was used to collect the signals in fluorescence mode. An ionization chamber (I<sub>0</sub>) filled with a mixture of N<sub>2</sub>/He was used to measure the intensity of the incident radiation. While the measurements in transmission mode were operated in other ionization chambers which were filled with the mixture of N<sub>2</sub> and Ar in I<sub>1</sub> chamber. A modified electrochemical cell was used for operando XAS measurements. The applied potential was controlled by a VSP potentiostat (Bio-Logic Science Instruments). A platinum wire and Ag/AgCl electrode (3 M KCl) were used as counter and reference electrodes, respectively. For the XAS studies, 15%<sub>at</sub> Ag–Cu was

firstly electrodeposited on gas diffusion layer (GDL, Sigracet 22 BB, Fuel Cell Store) used as gas diffusion electrode (GDE) and then functional solutions were drop-coated on the catalyst side, while the other side of the GDL was covered with polyamide tape. The GDL was then tape on a graphite foil and subsequently, the electrode was mounted in an operando cell with the graphite foil acting as a working electrode and window. A 0.5 M solution of  $\text{KHCO}_3$  was used as electrolyte for the  $\text{CO}_2\text{RR}$  and the cell was continuously purged with  $\text{CO}_2$  during the measurements. All measurements were performed at constant potentials of  $-1.2\text{ V}$ ,  $-1.1\text{ V}$ ,  $-1.0\text{ V}$  and  $-0.9\text{ V}$  vs. RHE. Time-resolved spectra were recorded every 30 min until no further changes were observed under  $\text{CO}_2\text{RR}$  conditions.

Data alignment and normalization of the X-ray absorption near-edge structure (XANES) spectra were conducted by using the Athena software. To fit the Cu K-edge extended X-ray absorption fine structure (EXAFS) spectra  $\chi(k)k^2$ , the range of parameter  $R$  in  $R$ -space from  $R_{\min} = 1\text{ \AA}$  up to  $R_{\max} = 2.1\text{ \AA}$  was used for the freshly prepared catalysts, while  $R_{\min} = 1.0\text{ \AA}$  to  $R_{\max} = 3.0\text{ \AA}$  was used for the reductive catalysts. The  $k$ -range from  $3.0\text{ \AA}^{-1}$  to  $10.0\text{ \AA}^{-1}$  with a  $k$ -weighting of 1, 2, and 3 were applied in the Fourier transforms. All fitting parameters including the coordination numbers  $N$ , interatomic distances  $R$ , disorder factors  $\sigma^2$  for Cu–O and Cu–Cu paths, as well as the corrections to the photoelectron reference energies  $\Delta E_0$  were obtained. The  $S_0^2$  factors were set to 0.831.

**Computational details.** All density functional theory (DFT) calculations were carried out in the Vienna Ab-initio Simulation Package (VASP) code with the projector augmented-wave (PAW) method. The exchange–correlation energy was treated using a general gradient approximation (GGA) with the Perdew–Burke–Ernzerhof (PBE) formalism. A plane-wave basis with a kinetic energy cutoff of 500 eV was chosen to expand the electronic wave functions. To investigate the possible binding modes between functional molecular and catalysts, a 5 layers of Cu (111) slab ( $7.7386\text{ \AA} \times 7.7386\text{ \AA}$ ), in which the two bottom layers were kept fixed during relaxation, was built with a vacuum space of about 20  $\text{\AA}$ . For the geometrical optimizations, all atoms were fully relaxed to the ground state with the convergence of energy and forces setting to  $1.0 \times 10^{-5}\text{ eV}$  and  $0.01\text{ eV \AA}^{-1}$ , where a  $3 \times 3 \times 1$   $\Gamma$ -centered Monkhorst-Pack scheme  $k$ -mesh was used to sample the first Brillouin zone. To compare the bond strength between each group of functional molecular and Cu (111), the adsorption energy ( $E_{\text{ads}}$ ) is calculated by using the following formula:

$$E_{\text{ads}} = E_{\text{Cu/FM}} - E_{\text{Cu}} - E_{\text{FM}} \quad (1)$$

where  $E_{\text{Cu/FM}}$ ,  $E_{\text{Cu}}$ , and  $E_{\text{FM}}$  denote the total electronic energies of an adsorbed system, a clean Cu (111) surface, and the free functional molecular, respectively.

**Electrochemical in H-cell and MEA configuration.** All electrochemical measurements were carried out at an ambient temperature and pressure using a VSP electrochemical station from Bio-Logic Science Instruments equipped with a 5 A booster and FRA32 module. The cell voltages reported in all figures were recorded without iR correction. All the potentials in the H-cell were converted to values with reference to the RHE using:

$$E_{\text{RHE}} = E_{\text{Ag/AgCl}} + 0.197\text{ V} + 0.0591 \times \text{pH} \quad (2)$$

In the H-cell configuration, Ag/AgCl reference electrode (3 M KCl) and Pt plate were used as a reference and counter electrodes, respectively. The electrolyte consisted of a 0.5 M  $\text{KHCO}_3$  solution (99.9%, Sigma Aldrich), which was saturated with alternatively  $\text{CO}_2$  ( $\geq 99.998\%$ , Linde) or Ar (5.0, Linde). Prior to any experiment, the electrolyte solutions were saturated by bubbling  $\text{CO}_2$  or Ar for at least 20 min.

The electrochemically active surface area (ECSA) of the different catalysts was determined using Pb underpotential deposition in H-cell. An Ar-saturated solution of 100 mM  $\text{HClO}_4$  + 1 mM  $\text{Pb}(\text{ClO}_4)_2$  was used as an electrolyte. The working electrode was held at  $-0.7\text{ V}$  vs. Ag/AgCl for 10 min and then cyclic voltammetry was recorded between  $-0.7$  and  $0.7\text{ V}$  vs. Ag/AgCl at  $10\text{ mV s}^{-1}$ . Pt foil was used as the counter electrode, while Ar (Linde, 99.998%) was continuously supplied to the electrolyte. The ECSA values for Cu and Ag were calculated assuming the deposition of a monolayer of Pb atoms over Cu and Ag surface with a conversion factor of 310 and  $260\text{ mC cm}^{-2}$ , respectively<sup>64</sup>.

The MEA electrolyzer (Dioxide Materials) was comprised of the Ag–Cu cathode, a Ti– $\text{IrO}_x$  mesh anode, and an anion exchange membrane (AEM, Fumapem FAA-3-50, Fuel cell store). The anode and cathode flow fields are made of titanium and stainless steel with geometric active areas of  $4\text{ cm}^2$ , respectively. The anode was prepared by following previous work through depositing  $\text{IrO}_x$  on a titanium support (0.002" thickness, Fuel Cell Store) with a loading of  $2\text{ mg cm}^{-2}$  by using a dip coating method followed by thermal annealing<sup>65</sup>.

The MEA was prepared by hot-pressing the anion exchange membrane (AEM, Fumapem FAA-3-50, Dioxide Materials) between the Ag–Cu cathode and Ti– $\text{IrO}_x$  anode. The cell was assembled with flow fields for the anode and the cathode, which were separated by the AEM. Anode and cathode gaskets were used to ensure good sealing of the electrolyzer (Supplementary Fig. 29). A 0.1 M  $\text{KHCO}_3$  anolyte and humidified  $\text{CO}_2$  gas were fed to the anode and cathode at constant flow rates of  $30\text{ mL min}^{-1}$  and 10 standard cubic centimeters per minute (sccm), respectively. The voltage of the electrolyzer was progressively increased from  $-2.8\text{ V}$  with increments of 50 or 100 mV. After 15–20 min of stable operation under constant full-cell potentials, the products were collected and analyzed.

**Quantification of the  $\text{CO}_2\text{RR}$  products.** The electrochemical data were recorded while simultaneously collecting the  $\text{CO}_2\text{RR}$  gas products by using an automatic sampler connected to the cathode outlet. A cold trap was used to collect the liquid products before the sampler. For each applied potential, the gas products were collected at least three times with proper time intervals. The gas aliquots were then injected into an online gas chromatograph (Agilent, Micro GC-490) equipped with a TCD detector and Molsieve 5 A column continuously. Hydrogen and argon (99.9999%) were used as the carrier gases. Liquid products were quantified by  $^1\text{H}$  NMR spectroscopy (600 Mhz Avance III Buker with a cryoprobe Prodigy TCI) using deionized water with 0.1% (w/w) of DSS (Sodium trimethylsilylpropane-sulfonate) like internal standard for the quantification of the ethanol and formate. An 1D sequence water suppression with excitation sculpting with gradients (zgpgp) was used for the acquisition (Number of scan = 32, Delay D1 = 30 s). Owing to the liquid product crossover, the FE values of the liquid products were calculated based on the total amount of the products collected on the anode and cathode sides during the same period.

**Stability measurements in the MEA configuration.** For the stability test, the MEA electrolyzer was operated at a constant voltage of  $-4.55\text{ V}$  with continuous feeding in  $\text{CO}_2$ . The gas products were collected at frequent time intervals. The FE values were calculated from the average value obtained from three successive injections. As for the liquid products, the total liquid products were collected at the end of the experiments.

**Faradaic efficiency and energy efficiency calculations.** The Faradaic efficiency (FE) of each gas product was calculated as follows:

$$\text{FE}_{\text{gas}} = g_i \times v \times \frac{z_i}{RT} \text{FP}_0 \times \frac{1}{I_{\text{total}}} \times 100\% \quad (3)$$

The Faradaic efficiency (FE) of each liquid product was calculated as follows:

$$\text{FE}_{\text{liquid}} = l_i \times \frac{z_i}{Q_{\text{total}}} \times F \times 100\% \quad (4)$$

The formation rate ( $R$ ) for each species ( $i$ ) was calculated as follows:

$$R_i = \frac{Q_{\text{total}} \times \text{FE}_i}{96,485 \times z_i \times t \times S} \quad (5)$$

The full-cell energy efficiencies (EE) was calculated as follows:

$$\text{EE} = \frac{(1.23 - E_i) \times \text{FE}_i}{E_{\text{cell}}} \quad (6)$$

where  $g_i$  represents the volume fraction of gas product  $i$ ;  $v$  represents the gas flow rate at the outlet in sccm;  $z_i$  represents the number of electrons required to produce one molecule of product  $i$ ;  $I_{\text{total}}$  represents the total current;  $l_i$  represents the number of moles of liquid product  $i$ ; and  $Q_{\text{total}}$  represents the charge passed while the liquid products are being collected.  $P_0 = 1.01 \times 10^5\text{ Pa}$ ,  $T = 273.15\text{ K}$ ,  $F = 96,485\text{ C mol}^{-1}$  and  $R = 8.314\text{ J mol}^{-1}\text{ K}^{-1}$ ;  $t$  represents the electrolysis time ( $h$ );  $S$  represents the geometric area of the electrode ( $\text{cm}^2$ );  $E_i$  represents the thermodynamic potential (versus RHE) for  $\text{CO}_2\text{RR}$  to species  $i$  and  $E_{\text{cell}}$  represents the cell voltage in two-electrode setup.

## Data availability

The authors declare that all data supporting the results of this study are available within the paper and its Supplementary Information files or from the corresponding authors upon reasonable request.

Received: 11 August 2021; Accepted: 12 November 2021;

Published online: 10 December 2021

## References

- Bushuyev, O. S. et al. What should we make with  $\text{CO}_2$  and how can we make it? *Joule* **2**, 825–832 (2018).
- Whipple, D. T. & Kenis, P. J. Prospects of  $\text{CO}_2$  utilization via direct heterogeneous electrochemical reduction. *J. Phys. Chem. Lett.* **1**, 3451–3458 (2010).
- Ross, M. B. et al. Designing materials for electrochemical carbon dioxide recycling. *Nat. Catal.* **2**, 648–658 (2019).
- Ross, M. B. et al. Electrocatalytic rate alignment enhances syngas generation. *Joule* **3**, 257–264 (2019).
- Ren, S. et al. Molecular electrocatalysts can mediate fast, selective  $\text{CO}_2$  reduction in a flow cell. *Science* **365**, 367–369 (2019).
- Gu, J. et al. Atomically dispersed  $\text{Fe}^{3+}$  sites catalyze efficient  $\text{CO}_2$  electroreduction to CO. *Science* **364**, 1091–1094 (2019).
- Liu, M. et al. Enhanced electrocatalytic  $\text{CO}_2$  reduction via field-induced reagent concentration. *Nature* **537**, 382–386 (2016).

8. Hori, Y., Murata, A. & Takahashi, R. Formation of hydrocarbons in the electrochemical reduction of carbon dioxide at a copper electrode in aqueous solution. *J. Chem. Soc. Faraday Trans.* **85**, 2309–2326 (1989).
9. Hoang, T. T. et al. Nanoporous copper–silver alloys by additive-controlled electrodeposition for the selective electroreduction of CO<sub>2</sub> to ethylene and ethanol. *J. Am. Chem. Soc.* **140**, 5791–5797 (2018).
10. Li, Y. C. et al. Binding site diversity promotes CO<sub>2</sub> electroreduction to ethanol. *J. Am. Chem. Soc.* **141**, 8584–8591 (2019).
11. Lee, S., Park, G. & Lee, J. Importance of Ag–Cu biphasic boundaries for selective electrochemical reduction of CO<sub>2</sub> to ethanol. *ACS Catal.* **7**, 8594–8604 (2017).
12. Chen, C. et al. Cu–Ag tandem catalysts for high-rate CO<sub>2</sub> electrolysis toward multicarbons. *Joule* **4**, 1688–1699 (2020).
13. Clark, E. L., Hahn, C., Jaramillo, T. F. & Bell, A. T. Electrochemical CO<sub>2</sub> reduction over compressively strained CuAg surface alloys with enhanced multi-carbon oxygenate selectivity. *J. Am. Chem. Soc.* **139**, 15848–15857 (2017).
14. Zhou, Y. et al. Dopant-induced electron localization drives CO<sub>2</sub> reduction to C<sub>2</sub> hydrocarbons. *Nat. Chem.* **10**, 974–980 (2018).
15. Buckley, A. K. et al. Electrocatalysis at organic–metal interfaces: identification of structure–reactivity relationships for CO<sub>2</sub> reduction at modified Cu surfaces. *J. Am. Chem. Soc.* **141**, 7355–7364 (2019).
16. Han, Z. et al. CO<sub>2</sub> reduction selective for C ≥ 2 products on polycrystalline copper with N-substituted pyridinium additives. *ACS Cent. Sci.* **3**, 853–859 (2017).
17. Cui, W. G. & Hu, T. L. Incorporation of active metal species in crystalline porous materials for highly efficient synergetic catalysis. *Small* **17**, e2003971 (2020).
18. Bai, S. et al. Highly active and selective hydrogenation of CO<sub>2</sub> to ethanol by ordered Pd–Cu nanoparticles. *J. Am. Chem. Soc.* **139**, 6827–6830 (2017).
19. Huang, J. et al. Structural sensitivities in bimetallic catalysts for electrochemical CO<sub>2</sub> reduction revealed by Ag–Cu nanodimers. *J. Am. Chem. Soc.* **141**, 2490–2499 (2019).
20. Varandili, S. B. et al. Synthesis of Cu/CeO<sub>2-x</sub> nanocrystalline heterodimers with interfacial active sites to promote CO<sub>2</sub> electroreduction. *ACS Catal.* **9**, 5035–5046 (2019).
21. Chou, T.-C. et al. Controlling the oxidation state of the Cu electrode and reaction intermediates for electrochemical CO<sub>2</sub> reduction to ethylene. *J. Am. Chem. Soc.* **142**, 2857–2867 (2020).
22. Zhang, W. et al. Atypical oxygen-bearing copper boosts ethylene selectivity toward electrocatalytic CO<sub>2</sub> reduction. *J. Am. Chem. Soc.* **142**, 11417–11427 (2020).
23. Yang, P.-P. et al. Protecting copper oxidation state via intermediate confinement for selective CO<sub>2</sub> electroreduction to C<sub>2+</sub> fuels. *J. Am. Chem. Soc.* **142**, 6400–6408 (2020).
24. Gao, D. et al. Selective CO<sub>2</sub> electroreduction to ethylene and multicarbon alcohols via electrolyte-driven nanostructuring. *Angew. Chem. Int. Ed.* **58**, 17047–17053 (2019).
25. Wang, H. et al. Rapid and scalable synthesis of cuprous halide-derived copper nano-architectures for selective electrochemical reduction of carbon dioxide. *Nano Lett.* **19**, 3925–3932 (2019).
26. Cui, X. et al. Bridging homogeneous and heterogeneous catalysis by heterogeneous single-metal-site catalysts. *Nat. Catal.* **1**, 385–397 (2018).
27. Copéret, C. et al. Eine Brücke zwischen industriellen und wohldefinierten Trägerkatalysatoren. *Angew. Chem. Int. Ed.* **130**, 6506–6551 (2018).
28. Copéret, C., Chabanas, M., Petroff Saint-Arroman, R. & Basset, J. M. Homogeneous and heterogeneous catalysis: bridging the gap through surface organometallic chemistry. *Angew. Chem. Int. Ed.* **42**, 156–181 (2003).
29. Pelletier, J. R. M. D. & Basset, J.-M. Catalysis by design: well-defined single-site heterogeneous catalysts. *Acc. Chem. Res.* **49**, 664–677 (2016).
30. Copéret, C. et al. Bridging the gap between industrial and well-defined supported. *Catal. Angew. Chem. Int. Ed.* **57**, 6398–6440 (2018).
31. Thevenon, A., Rosas-Hernández, A., Peters, J. C. & Agapie, T. In-situ nanostructuring and stabilization of polycrystalline copper by an organic salt additive promotes electrocatalytic CO<sub>2</sub> reduction to ethylene. *Angew. Chem. Int. Ed.* **58**, 16952–16958 (2019).
32. Li, F. et al. Molecular tuning of CO<sub>2</sub>-to-ethylene conversion. *Nature* **577**, 509–513 (2020).
33. Rosen, B. A. et al. Ionic liquid-mediated selective conversion of CO<sub>2</sub> to CO at low overpotentials. *Science* **334**, 643–644 (2011).
34. Cao, Z. et al. Chelating N-heterocyclic carbene ligands enable tuning of electrocatalytic CO<sub>2</sub> reduction to formate and carbon monoxide: surface organometallic chemistry. *Angew. Chem. Int. Ed.* **130**, 5075–5079 (2018).
35. Lau, G. P. et al. New insights into the role of imidazolium-based promoters for the electroreduction of CO<sub>2</sub> on a silver electrode. *J. Am. Chem. Soc.* **138**, 7820–7823 (2016).
36. Kim, C. et al. Achieving selective and efficient electrocatalytic activity for CO<sub>2</sub> reduction using immobilized silver nanoparticles. *J. Am. Chem. Soc.* **137**, 13844–13850 (2015).
37. Wakerley, D. et al. Bio-inspired hydrophobicity promotes CO<sub>2</sub> reduction on a Cu surface. *Nat. Mater.* **18**, 1222–1227 (2019).
38. Kim, C. et al. Insight into electrochemical CO<sub>2</sub> reduction on surface-molecule-mediated Ag nanoparticles. *ACS Catal.* **7**, 779–785 (2017).
39. Fang, Y. & Flake, J. C. Electrochemical reduction of CO<sub>2</sub> at functionalized Au electrodes. *J. Am. Chem. Soc.* **139**, 3399–3405 (2017).
40. Zhong, Y. et al. An artificial electrode/electrolyte interface for CO<sub>2</sub> electroreduction by cation surfactant self-assembly. *Angew. Chem. Int. Ed.* **132**, 19257–19263 (2020).
41. Dena, A. S. A., Muhammad, Z. A. & Hassan, W. M. Spectroscopic, DFT studies and electronic properties of novel functionalized bis-1, 3, 4-thiadiazoles. *Chem. Pap.* **73**, 2803–2812 (2019).
42. Sherif, E.-S. M., Erasmus, R. & Comins, J. Corrosion of copper in aerated acidic pickling solutions and its inhibition by 3-amino-1, 2, 4-triazole-5-thiol. *J. Colloid Interface Sci.* **306**, 96–104 (2007).
43. Pan, Y.-C. et al. 2-Amino-5-(4-pyridinyl)-1, 3, 4-thiadiazole monolayers on copper surface: observation of the relationship between its corrosion inhibition and adsorption structure. *Corros. Sci.* **73**, 274–280 (2013).
44. Sherif, E. & Park, S.-M. Effects of 2-amino-5-ethylthio-1, 3, 4-thiadiazole on copper corrosion as a corrosion inhibitor in aerated acidic pickling solutions. *Electrochim. Acta* **51**, 6556–6562 (2006).
45. Ren, D. et al. Selective electrochemical reduction of carbon dioxide to ethylene and ethanol on copper (I) oxide catalysts. *ACS Catal.* **5**, 2814–2821 (2015).
46. Deng, Y. & Yeo, B. S. Characterization of electrocatalytic water splitting and CO<sub>2</sub> reduction reactions using in situ/operando Raman spectroscopy. *ACS Catal.* **7**, 7873–7889 (2017).
47. Kan, M. et al. 2-Aminobenzenethiol-functionalized silver-decorated nanoporous silicon photoelectrodes for selective CO<sub>2</sub> reduction. *Angew. Chem. Int. Ed.* **132**, 11559–11566 (2020).
48. Dilimon, V., Denayer, J., Delhalle, J. & Mekhalif, Z. Electrochemical and spectroscopic study of the self-assembling mechanism of normal and chelating alkanethiols on copper. *Langmuir* **28**, 6857–6865 (2012).
49. Biesinger, M. C. Advanced analysis of copper X-ray photoelectron spectra. *Surf. Interface Anal.* **49**, 1325–1334 (2017).
50. Fielicke, A., Gruene, P., Meijer, G. & Rayner, D. M. The adsorption of CO on transition metal clusters: a case study of cluster surface chemistry. *Surf. Sci.* **603**, 1427–1433 (2009).
51. Arán-Ais, R. M. et al. The role of in situ generated morphological motifs and Cu (i) species in C<sub>2+</sub> product selectivity during CO<sub>2</sub> pulsed electroreduction. *Nat. Energy* **5**, 317–325 (2020).
52. Favaro, M. et al. Subsurface oxide plays a critical role in CO<sub>2</sub> activation by Cu (111) surfaces to form chemisorbed CO<sub>2</sub>, the first step in reduction of CO<sub>2</sub>. *Proc. Natl Acad. Sci. USA* **114**, 6706–6711 (2017).
53. Pauly, N., Tougaard, S. & Yubero, F. LMM Auger primary excitation spectra of copper. *Surf. Sci.* **630**, 294–299 (2014).
54. Tahir, D. & Tougaard, S. Electronic and optical properties of Cu, CuO and Cu<sub>2</sub>O studied by electron spectroscopy. *J. Phys. Condens. Matter* **24**, 175002 (2012).
55. Barman, S. & Sarma, D. Investigation of the L<sub>3</sub>-M<sub>45</sub>M<sub>45</sub> Auger spectra of Cu, Cu<sub>2</sub>O and CuO. *J. Phys. Condens. Matter* **4**, 7607 (1992).
56. Raciti, D. & Wang, C. Recent advances in CO<sub>2</sub> reduction electrocatalysis on copper. *ACS Energy Lett.* **3**, 1545–1556 (2018).
57. Cheng, T., Xiao, H. & Goddard, W. A. Full atomistic reaction mechanism with kinetics for CO reduction on Cu (100) from ab initio molecular dynamics free-energy calculations at 298K. *Proc. Nat. Acad. Sci. USA* **114**, 1795–1800 (2017).
58. Kortlever, R. et al. Catalysts and reaction pathways for the electrochemical reduction of carbon dioxide. *J. Phys. Chem. Lett.* **6**, 4073–4082 (2015).
59. Montoya, J. H., Shi, C., Chan, K. & Nørskov, J. K. Theoretical insights into a CO dimerization mechanism in CO<sub>2</sub> electroreduction. *J. Phys. Chem. Lett.* **6**, 2032–2037 (2015).
60. Chernyshova, I. V., Somasundaran, P. & Ponnuram, S. On the origin of the elusive first intermediate of CO<sub>2</sub> electroreduction. *Proc. Nat. Acad. Sci. USA* **115**, E9261–E9270 (2018).
61. Akemann, W. & Otto, A. Vibrational modes of CO adsorbed on disordered copper films. *J. Raman Spectrosc.* **22**, 797–803 (1991).
62. Gunathunge, C. M. et al. Spectroscopic observation of reversible surface reconstruction of copper electrodes under CO<sub>2</sub> reduction. *J. Phys. Chem. C* **121**, 12337–12344 (2017).
63. Clark, R. J. H. & Hester, R. E. *Spectroscopy for Surface Science* (John Wiley & Sons, 1998).
64. Wang, X. et al. Efficient electrically powered CO<sub>2</sub>-to-ethanol via suppression of deoxygenation. *Nat. Energy* **5**, 478–486 (2020).



65. Gabardo, C. M. et al. Continuous carbon dioxide electroreduction to concentrated multi-carbon products using a membrane electrode assembly. *Joule* **3**, 2777–2791 (2019).
66. Merino-Garcia, I. et al. Cu oxide/ZnO-based surfaces for a selective ethylene production from gas-phase CO<sub>2</sub> electroconversion. *J. CO<sub>2</sub> Util.* **31**, 135–142 (2019).
67. Ozden, A. et al. High-rate and efficient ethylene electrosynthesis using a catalyst/promoter/transport layer. *ACS Energy Let.* **5**, 2811–2818 (2020).

## Acknowledgements

D.V., K.Q., and H.L.W. acknowledge funding from the European Research Council (ERC) under the European Union's Horizon 2020 research and innovation program (grant agreement no. 804320). L.L., D.V., and H.L.W. acknowledge the use of TEM instrumentation provided by the Nation Facility ELECMI ICTS ('Division de Microscopia Electronica', Universidad de Cadiz, DME-UCA). L.L. acknowledges funding from the Andalusian regional government (FEDER-UCA-18-106613), the European Union's Horizon 2020 research and innovation program (grant agreement 823717-ESTEEM3), and the Spanish Ministerio de Economia y Competitividad (PID2019-107578GA-I00). K.Q. and Y.Z. acknowledge financial support from the China Postdoctoral Science Foundation (2018M633127) and the Natural Science Foundation of Guangdong Province (2018A030310602). J.L. acknowledge financial support from the National Natural Science Foundation of China (21808134). We thank Soleil Synchrotron and Andrea Zitolo for allocating beamtime at beamline Samba within the proposal 20200732.

## Author contributions

D.V. conceived the idea, designed the experiments, and wrote the manuscript. H.W. designed the experiments with D.V., prepared the electrodes and performed the electrochemical measurements, and analyzed the results with D.V. H.W. and D.V. analyzed the data and wrote the manuscript. J.L. discussed the data with H.W. and performed the DFT calculations. E.P., C.S., and V.F. carried out the liquid NMR spectroscopy measurements and the XPS/Auger measurements. K.Q., Y.Z., assisted H.W. with the electrochemical and the XANES/EXAFS measurements. N.O. discussed the reaction mechanism with D.V. and H.W. L.H. and W.W. assisted H.W. with the physical characterizations of the Ag–Cu electrodes. B.R. performed SEM/EDXL. L.L. performed high-resolution TEM on the

functionalized Ag–Cu catalysts. P.M. discussed the results with D.V. and H.W. All of the authors edited the manuscript before submission.

## Competing interests

The authors declare no competing interests.

## Additional information

**Supplementary information** The online version contains supplementary material available at <https://doi.org/10.1038/s41467-021-27456-5>.

**Correspondence** and requests for materials should be addressed to Damien Voiry.

**Peer review information** *Nature Communications* thanks John Flake, Miao Zhong, and the other anonymous reviewer(s) for their contribution to the peer review of this work.

**Reprints and permission information** is available at <http://www.nature.com/reprints>

**Publisher's note** Springer Nature remains neutral with regard to jurisdictional claims in published maps and institutional affiliations.



**Open Access** This article is licensed under a Creative Commons Attribution 4.0 International License, which permits use, sharing, adaptation, distribution and reproduction in any medium or format, as long as you give appropriate credit to the original author(s) and the source, provide a link to the Creative Commons license, and indicate if changes were made. The images or other third party material in this article are included in the article's Creative Commons license, unless indicated otherwise in a credit line to the material. If material is not included in the article's Creative Commons license and your intended use is not permitted by statutory regulation or exceeds the permitted use, you will need to obtain permission directly from the copyright holder. To view a copy of this license, visit <http://creativecommons.org/licenses/by/4.0/>.

© The Author(s) 2021