



HAL
open science

Differential expression of two ATPases revealed by lipid raft isolation from gills of euryhaline teleosts with different salinity preferences

Yu-Ting Lin, Yau-Chung Hu, Yu-Chun Wang, Man-Yun Hsiao, Catherine Lorin-Nebel, Tsung-Han Lee

► To cite this version:

Yu-Ting Lin, Yau-Chung Hu, Yu-Chun Wang, Man-Yun Hsiao, Catherine Lorin-Nebel, et al.. Differential expression of two ATPases revealed by lipid raft isolation from gills of euryhaline teleosts with different salinity preferences. *Comparative Biochemistry and Physiology - Part B: Biochemistry and Molecular Biology*, 2021, 253, pp.110562. 10.1016/j.cbpb.2021.110562 . hal-03413617

HAL Id: hal-03413617

<https://hal.umontpellier.fr/hal-03413617v1>

Submitted on 3 Feb 2023

HAL is a multi-disciplinary open access archive for the deposit and dissemination of scientific research documents, whether they are published or not. The documents may come from teaching and research institutions in France or abroad, or from public or private research centers.

L'archive ouverte pluridisciplinaire **HAL**, est destinée au dépôt et à la diffusion de documents scientifiques de niveau recherche, publiés ou non, émanant des établissements d'enseignement et de recherche français ou étrangers, des laboratoires publics ou privés.



Distributed under a Creative Commons Attribution - NonCommercial 4.0 International License

1 *Submitted to Comparative Biochemistry and Physiology B*

2 **Differential expression of two ATPases revealed by lipid raft isolation**
3 **from gills of euryhaline teleosts with different salinity preferences**

4 Yu-Ting Lin^{1,2,#}, Yau-Chung Hu^{1,2,#}, Yu-Chun Wang³, Man-Yun Hsiao¹,

5 Catherine Lorin-Nebel^{4,*} and Tsung-Han Lee^{1,2,*}

6

7 ¹Department of Life Sciences, National Chung Hsing University, Taichung 402,
8 Taiwan

9 ²The iEGG and Animal Biotechnology Center, National Chung Hsing University,
10 Taichung 402, Taiwan

11 ³Planning and Information Division, Fisheries Research Institute, Keelung 202,
12 Taiwan

13 ⁴Univ. Montpellier, MARBEC (Univ. Montpellier, CNRS, IRD, IFREMER), 34095
14 Montpellier, France

15

16 #Y.T. Lin and Y.C. Hu contributed equally to this paper.

17 *Corresponding authors:

18 (1) T.H. Lee - Department of Life Sciences, National Chung Hsing University, 145
19 Xingda Road, Taichung 402, Taiwan.

20 Tel.: +886 4 2285 6141 Email: thlee@email.nchu.edu.tw

21 (2) C. Lorin-Nebel - Université Montpellier, MARBEC, cc 093, Place E. Bataillon,
22 34095 Montpellier cedex 5, France.

23 Tel: +33 4 67 14 93 91 Email: catherine.lorin@umontpellier.fr

24

25 Running title: Flotillin and ion transporter expression in lipid raft

26 Keywords: osmoregulation, flotillin, Na⁺, K⁺-ATPase, V-type H⁺-ATPase, euryhaline

27 teleosts

28

29

Abstract

30
31
32
33
34
35
36
37
38
39
40
41
42
43
44
45
46
47
48
49
50
51

In euryhaline teleosts, Na⁺, K⁺-ATPase (NKA) and V-type H⁺-ATPase A (VHA A) are important ion-transporters located in cell membrane. Lipid rafts (LR) are plasma membrane microdomains enriched in cholesterol, sphingolipids, and proteins (e.g., flotillin). Flotillin is a LR-associated protein, commonly used as the LR marker. Previous mammalian studies showed that LR may play a crucial role in ion exchanges. Meanwhile, studies on mammals and rainbow trout showed that NKA were found to be present mainly in LR. However, little is known about LR in fish. Therefore, the present study aimed to investigate the involvement of branchial LR in osmoregulation of tilapia and milkfish, two euryhaline teleosts with different salinity preferences, by (i) extracting LR from the gills of euryhaline teleosts; (ii) detecting the abundance of LR marker protein (flotillin-2) and ion-transporters (NKA and VHA A) in branchial LR and non-LR of fresh water- and seawater-acclimated milkfish and tilapia. The results indicated that the protein abundance of LR marker, flotillin-2, changed with environmental salinities in branchial LR of tilapia. In addition, flotillin-2 and NKA were only found in LR in both tilapia and milkfish gills, while VHA A were mainly present in non-LR. Relative protein abundance of NKA was found to be significantly higher in gills of freshwater milkfish and seawater tilapia, while VHA A was significantly higher in gills of freshwater tilapia and milkfish. This study illustrated differential distribution and salinity-dependent expression of NKA and VHA A in cell membrane of gill tissues of euryhaline teleosts with different salinity preferences.

52 **Introduction**

53 Lipid raft (LR) are membrane microdomains rich in cholesterol and
54 glycosphingolipids involved in the organization and aggregation of lipid bilayer
55 constituents including transmembrane proteins (Simons and Ikonen, 1997). LR have
56 been reported to be involved in virus entry (Nguyen and Hildreth, 2000; Ono and
57 Freed, 2001), protein trafficking (Brown and London, 1998), ion transport processes
58 (Tillman and Cascio, 2003) and cell signaling (Varma and Mayor, 1998). Because of
59 their high lipid content, i.e., high lipid-to-protein ratio (Brown and Rose, 1992) and
60 relatively low density, the LR fraction can be extracted following non-ionic detergent
61 treatment using density gradients. LR are highly dynamic, usually nanoscale
62 structures that can form bigger raft by means of fusion of small entities (Lingwood
63 and Simons, 2010). Levental et al. (2010) showed that S-acylation, referred to as
64 'palmitoylation' plays an important role in regulating raft affinity. The binding of
65 palmitate with cysteine residues of proteins promotes their insertion into the LR
66 fraction and suggests that palmitoylation plays a critical role in membrane targeting
67 mechanisms involving transmembrane proteins (Resh, 2006). According to Levental
68 et al. (2010) and Contreras et al. (2011), among plasma membrane proteins, about
69 65% were in the non-raft phase, whereas 12% required palmitoylation for raft phase
70 inclusion, 11% were glycosylphosphatidylinositol (GPI)-anchored in the raft, and the
71 other 11% could be bound to LR lipids such as cholesterol or sphingolipids (SLs).

72 Lipid compositions of the LR and non-LR fractions are considered to be different
73 as shown in common carp (*Cyprinus carpio*), i.e., the LR fraction contained a higher
74 percentage of cholesterol and non-polar lipids (Brogden et al., 2014). Non-ionic
75 detergents are thus used to extract LR (also called detergent-resistant membranes
76 (DRM)) from other cell membranes (Eckert et al., 2003; Dalskov et al., 2005;
77 Lingwood et al., 2005). Commonly used detergents for LR extraction in mammalian

78 studies include CHAPS, Tween 20, Triton X-100, Lubrol WX, Brij96, and Brij98, and
79 different detergents that may cause different result of lipid raft isolation due to the
80 dissolvability (Drevot et al., 2002; Madore et al., 1999; Röper et al., 2000; Schuck et
81 al., 2003). Among them, Triton X-100 is the most commonly used detergent for LR
82 extraction (Foster and Chan, 2007; Pike, 2006; Schroeder et al., 1998). Triton X-100
83 has also been applied in LR research with various protocols in skate (*Raja erinacea*;
84 Musch et al., 2004), rainbow trout (Lingwood et al., 2005), Atlantic cod (*Gadus*
85 *morhua*; Gylfason et al., 2010), goldfish (*Carassius auratus*; Garcia-Garcia et al.,
86 2012), and common carp (Brogden et al., 2014). Previous studies on fish have not
87 compared different detergents and have not quantified flotillin-2 following LR
88 isolation. Brogden et al. (2014) found that lipid composition of plasma membrane in
89 common carp was different from that in human, and the lipid components were
90 organ-dependent, whether in LR or non-LR regions. In their results, even 0.1% of
91 Triton X-100 cannot perfectly isolate flotillin-2 in LR from non-LR region in all
92 tissue. As a result, it is important to test different concentration of detergents.

93 Flotillins are LR-associated proteins commonly used as markers for LR. Plasma
94 membrane targeting and clustering of flotillins on LR mainly relies on acylation
95 (myristoylation or palmitoylation) (Banning et al., 2011). Furthermore, they have also
96 been shown to be involved in some basic functions such as trafficking and transport of
97 membrane materials and proteins (Stuermer, 2010). Flotillins are divided into two
98 isoforms. Flotillin-1 (previously named reggie-2) seems to associate with raft by
99 means of the first hydrophobic domain (Liu et al., 2005) and has also been shown to
100 be palmitoylated in Cys34, which is essential for flotillin-1 to locate on the
101 cytoplasmic side of the plasma membrane (Morrow et al., 2002). Flotillin-2
102 (previously named reggie-1) interacts with the plasma membrane through several sites
103 of palmitoylations and myristoylations, and plays a significant role in the maintenance

104 of membrane raft (Neumann-Giesen et al., 2004, Langhorst et al., 2006). Evidence of
105 flotillin function in fish is scarce. In zebrafish (*Danio rerio*), von Philipsborn et al.
106 (2005) suggested that flotillin might be involved in development.

107 The LR plays important roles in ionoregulation and osmoregulation, as shown by
108 proteins responsible for ion transport being localized to LR, including active transport
109 pumps/enzymes (i.e., ATPase) (Tillman and Cascio, 2003; Murtazina et al., 2006). For
110 example, the Na⁺, K⁺-ATPase (NKA) in fish branchial and renal cells (Lingwood et
111 al., 2005; Welker et al. 2007) and vacuolar-type H⁺-ATPase (VHA) in mammalian
112 cells (Lafourcade et al., 2008).

113 Membrane structure and transmembrane enzyme function are linked because the
114 lipid environment of the enzyme can constrain protein motions required for catalysis,
115 affecting the enzyme catalytic rate (Harris, 1985; Cossins et al., 1986). Among the
116 enzymes/transporters, the NKA catalyzes the transport of Na⁺ and Cl⁻ across epithelia
117 in both absorptive (fresh water; FW) and secretory (seawater; SW) modes in gills of
118 euryhaline teleosts (Marshall, 2002; Perry et al., 2003; Hirose et al., 2003). Changes
119 in branchial NKA activity in euryhaline fish are necessary for acclimation to
120 environmental salinity (Marshall and Bryson, 1998; Kelly et al., 1999; Marshall, 2002;
121 Mancera et al., 2002; Hirose et al., 2003; Lin et al., 2003; Scott et al., 2004).

122 Furthermore, NKA consists of α - and β -subunits (Scheiner-Bobis, 2002). The
123 α -subunit has a molecular weight of about 100 kDa and is considered the catalytic
124 center of the NKA, with binding sites for cations, ATP, and ouabain (NKA inhibitor).
125 The β -subunit, with a molecular weight of 40-60 kDa, can stabilize the structure and
126 regulate the cations affinity of the α -subunit on the plasma membrane (Skou and
127 Esmann, 1992; Abriel et al., 1999). Moreover, reciprocal interactions between NKA
128 and cholesterol or phospholipids have been proposed (Chen et al., 2011; Cornelius,
129 2008; Cornelius et al., 2015; Haviv et al., 2013; Kravtsova et al., 2015) and NKA

130 distribution on LR has been reported in previous studies on mammalian tissues
131 (Welker et al., 2007). Using the Brij 98 (as a non-ionic detergent) to extract the
132 granulocytes in the brain of rat also revealed the presence of NKA α -subunits in LR
133 (Dalskov et al., 2005). However, there are few studies focused on fish NKA in LR. In
134 gills of rainbow trout (*Oncorhynchus mykiss*), NKA are expressed in LR when
135 transferred to SW but not detected in LRs in FW individuals, indicating different
136 strategies in ionoregulation between FW- and SW-acclimated rainbow trout
137 (Lingwood et al., 2005). Most reports on NKA α -subunit, however, focused on their
138 localization on the basolateral plasma membrane and their expression when fish
139 encountered different environmental salinities (Lee et al., 2003; Lin et al., 2003). The
140 NKA α -subunit protein abundance in gills of FW-preference Mozambique tilapia
141 (*Oreochromis mossambicus*) was significantly higher in SW than in FW (Lee et al.
142 2003), while in gills of SW-preference milkfish (*chanos chanos*) it was significantly
143 higher in FW than in SW (Lin et al., 2003).

144 The VHA is a multi-subunit complex organized into two domains: the 650 kDa
145 cytosolic V_1 domain and the 260 kDa membrane-embedded V_0 domain (Nishi and
146 Forgac, 2002; Forgac, 2007; Toei et al., 2010). In previous mammalian studies,
147 deprivation of cholesterol from LR resulted in the decrease of electrogenic H^+ efflux
148 by VHA and in synaptic signaling deficiency (Yoshinaka et al., 2004). On frog and
149 insect epithelial cells, VHA contributed to acid-base regulation and osmoregulation
150 (Harvey et al., 1998). In the studies on rainbow trout gills, VHA activity and
151 immunoreactivity decreased when FW trout were acclimated to SW (Lin and Randall,
152 1993; Lin et al., 1994). In the Atlantic stingray (*Dasyatis sabina*) and killifish
153 (*Fundulus heteroclitus*), VHA expressed on the cell membrane was significantly
154 higher in FW than in SW (Piermarini and Evans, 2001; Katoh et al., 2003). As a result,
155 this consistently higher expression of VHA in FW environments is linked to its role in

156 generating an electrical gradient favoring Na⁺ uptake in FW-type ionocytes,
157 additional to its role in acid secretion. In tilapia, bafilomycin, an inhibitor of VHA,
158 has been shown to affect *in vivo* Na⁺ influx (Fenwick et al., 1999), indicating a key
159 role of this pump in freshwater osmoregulation in tilapia and suggesting an apical
160 location in ionocytes.

161 To date, most studies on NKA and VHA in fish focus on their relationship with
162 cell membrane, while the relationship between NKA and LR in fish was only reported
163 in the rainbow trout (Lingwood et al., 2005). On the other hands, there is no reference
164 reporting the associations of VHA and LR in fish. According to previous references,
165 this study hypothesized that NKA and VHA, the major ion pumps in fish gills, may be
166 mainly distributed in the LR to be involved in ionoregulation of euryhaline teleosts
167 when acclimated to environments of different salinities. As a result, the present study
168 aims to investigate the presence of LR and their exhibition of NKA and VHA in gills
169 of tilapia (the FW euryhaline teleost) and milkfish (the marine euryhaline teleost), by
170 (i) extracting membrane LR from gills of tilapia and milkfish, with fresh water (FW)
171 and seawater (SW) preferences, respectively, and (ii) assessing differential NKA and
172 VHA expression in branchial LR between FW- and SW-acclimated milkfish and
173 tilapia. This study provides the evidence for expression of critical ion transporters in
174 LR of euryhaline teleosts with different salinity preferences. Differential expression of
175 flotillin-2 (the LR marker) and two ATPases, the ATP-consuming NKA and VHA, in
176 gills of euryhaline fish will further clarify the ionoregulation roles of branchial LR in
177 environments of different salinities.

178

179

180

Materials and methods

181 Experimental fish and design

182 Mozambique tilapia (*Oreochromis mossambicus*), and juvenile milkfish (*Chanos*
183 *chanos*) were obtained from laboratory stocks and a local fish farm, respectively, with
184 average standard lengths of 5.5 ± 0.5 , and 10.6 ± 0.4 cm, respectively. Seawater (SW;
185 35 ‰) and brackish water (BW; 15 ‰) used in this study were prepared from aerated
186 tap water (FW) with artificial sea salt (Synthetic Sea Salt; Blue Treasure, Qingdao,
187 China). The water was continuously circulated through fabric-floss filters and quarter
188 of water was changed every two weeks. The ammonia contents were routinely
189 examined using the commercial API[®] ammonia test kit. Quarter of water was changed
190 when the ammonia level was higher than 0 ppm. Each species of fish was reared in
191 four separated tanks at $28 \pm 1^\circ\text{C}$ in BW for two weeks before transfer to either FW or
192 SW, with a daily 12 h photoperiod and a daily diet of commercial pellets. The holding
193 densities of tilapia and milkfish in each tank were 0.4 fish/L and 0.2 fish/L,
194 respectively.

195 For establishing the protocol of lipid raft (LR) extraction, tilapia and milkfish
196 were reared in FW and SW, respectively, for at least four weeks before sampling the
197 gills. Differential expression of NKA and VHA in branchial LR was further assessed
198 between FW and SW in each species after one-month acclimation. For subsequent
199 analyses, six individuals of either FW or SW groups were used for experiments and
200 four gill arches from the right opercular side of each fish were sampled. Before
201 sampling, experimental fish were not fed for one day and anesthetized in 500 $\mu\text{L/L}$
202 2-phenoxyethanol. The protocol used for the experimental fish was reviewed and
203 approved by the Institutional Animal Care and Use Committee of the National Chung
204 Hsing University (IACUC approval no. 102-09R and 105-130 to T.H. Lee).

205

206 **Preparation of crude membrane fractions, lipid raft and non-lipid raft fractions**

207 Gill tissues from the experimental fish were steeped in a mixture of
208 homogenization buffer (SEI buffer, 150 mM sucrose, 10 mM EDTA, 50 mM
209 imidazole, pH 7.4) with commercial protease inhibitor cocktail (Roche, Mannheim,
210 Germany; 1:50, v/v). Homogenization was performed with a Polytron PT1200E
211 (Kinematica, Lucerne, Switzerland). After the first centrifugation (1,500 g at 4°C for
212 10 min), the pellets were discarded and the supernatants were centrifuged again
213 (13,000 g at 4°C for 12 min). After the second centrifugation, the supernatants were
214 retained and centrifuged a third time (20,800 g at 4°C for 60 min). Then after the third
215 centrifugation, the supernatants as the cytosol was discarded. Meanwhile, the pelleted
216 fraction containing large fragments of the plasma membrane was retained and
217 considered as the crude membrane fraction (Tang and Lee, 2010). In this study, the
218 crude membrane fraction was further dissolved to obtain the lipid raft using SEI
219 buffer with 0.1% or 0.05% Triton X-100 or 0.05% Tween 20 (abbreviated as SEIT) at
220 4°C (Brogden et al., 2014). After dissolution in detergents at different time points (30,
221 60 and/or 120 min) to determine the best duration of digestion, the aliquots were
222 centrifuged (20,800 g at 4°C for 30 min). The supernatants of the fourth centrifugation
223 was considered as the detergent-soluble membrane (non-LR). The pellet as the
224 detergent-insoluble membrane (LR) was then dissolved by the protease inhibitor
225 cocktail (Roche) contained SEID buffer (150 mM sucrose, 10 mM EDTA, 50 mM
226 imidazole, 0.5% sodium deoxycholate, pH 7.4) because LR can be dissolved in
227 deoxycholate (McGuinn and Mahoney, 2014). Protein concentrations were measured
228 with reagents from the Pierce™ BCA protein assay kit (Thermo Fisher, Rockford, IL,
229 USA) using bovine serum albumin (Thermo Fisher) as standard.

230

231 **Antibodies**

232 The primary antibodies used in this study included (i) a mouse monoclonal
233 antibody (α 5, DHSB, Iowa City, IA, USA) raised against the avian NKA α -subunit
234 (Lin et al., 2003; Yang et al., 2015), (ii) a mouse monoclonal antibody (flotillin-2,
235 Santa Cruz, CA, USA) raised against the amino acids 150-240 of human flotillin-2
236 (XP_016879883.1) with approximately 83% similarity with milkfish flotillin-2
237 (XP_030648347.1) and 80% similarity with tilapia flotillin-2 (XP_003456181.1), and
238 (iii) a rabbit polyclonal antibody (MDBio, Taipei, Taiwan) raised against the specific
239 epitope (AEMPADSGYPAYLGARLA) of the pufferfish (*Tetraodon nigroviridis*)
240 VHA A (ABX80240.1) with 100 % similarity with milkfish VHA A isoform1 and
241 isoform 2, as well as tilapia VHA A (BAF94024.1). The sequences of two isoforms of
242 VHA A found in the milkfish transcriptome database (Hu et al., 2015) were showed in
243 Fig. S1. The specificities of the VHA A antibody to gills of tilapia and milkfish were
244 tested and showed in Fig. S2. According to the primary antibodies, the secondary
245 antibodies for immunoblots included the horseradish peroxidase-conjugated (i) rabbit
246 anti-mouse IgG, (ii) goat anti-rabbit IgG, and (iii) rabbit anti-goat IgG (GeneTex,
247 Irvine, CA, USA). The similarity between flotillin-2 with milkfish.

248

249 **Immunoblotting**

250 The sample mixture of 6x sample loading dye (0.06% bromophenol blue, 30%
251 glycerol, 12% SDS, 0.6 M dithiothreitol, and 62.5 mM Tris with pH 6.8) and gill
252 proteins (1:5, v/v) was heated at 65°C for 15 min to denature the proteins. Non-LR
253 and LR samples were separated by electrophoresis on a 7% SDS-polyacrylamide gel
254 (5 μ g of protein per lane) using a Mini-protein II electrophoresis cell (Bio-Rad,
255 Hercules, CA, USA). Then, the separated proteins were transferred to polyvinylidene
256 difluoride (PVDF) membranes (Millipore, Bedford, MA, USA). After incubation in
257 the non-specific blocking solution using phosphate buffer saline with Tween 20

258 (PBST; 2.68 mM potassium chloride, 10.1 mM disodium phosphate, 137 mM sodium
259 chloride, 1.76 mM potassium dihydrogen phosphate, and 0.2 % (v/v) Tween; pH 7.4)
260 containing 5% (w/v) nonfat dried milk for 2 h at room temperature (RT), the blots
261 were incubated overnight with the primary antibody (1:5000) at 4°C, followed by
262 washing the membranes with PBST. Then the membranes were incubated with the
263 secondary antibody (1:25000) for 1 h at RT. Images were developed with T-Pro
264 LumiLong Chemiluminescent Substrate Kit (Ji-Feng Biotechnology, New Taipei,
265 Taiwan) under a cooling-CCD (charge-couple device) camera (ChemiDoc XRS+,
266 Bio-Rad) with associated software (Quantity One version 4.6.8, Bio-Rad). The blot
267 bands were converted to numerical values by ImageLab 3.0 software (Bio-Rad) to
268 quantify and compare relative protein abundance of the immunoreactive bands.

269

270 **Statistics**

271 In this study, comparisons in flotillin-2, NKA- α or VHA A abundance between (i) LR
272 and non-LR fractions of gills in either SW or FW fish, or (ii) SW or FW groups in
273 either LR or non-LR fractions, respectively, were analyzed by the Student's *t-test*,
274 with $p < 0.05$ was set as the significant level. Values are expressed as means \pm S.E.M.
275 (standard error of the mean).

276

277

278 **Results**

279 **Separation and purification of LR from tilapia and milkfish gills**

280 In tilapia (Fig. 1), the crude membrane fraction was first reacted in the non-ionic
281 detergent Triton X-100. After 30, 60, and 120 minutes of reaction with this detergent
282 at 0.1% as well as 60 minutes of reaction at 0.05%, strong immunoreactive bands
283 were found in LR for NKA α -subunit and flotillin-2. However, faint immunoreactive
284 bands of both proteins were found in non-LR, indicating that dissolvability of 0.1 and
285 0.05% Triton X-100 may not be optimal for tilapia gill tissues (Fig. 1). Meanwhile,
286 the supernatant separated by reacting with 0.05% Tween-20 for 60 minutes did not
287 show immunoreactive bands of flotillin-2 in non-LR, indicating the better dissolution
288 of this protocol for extracting LR from tilapia gills (Fig. 1). Moreover, no band for
289 NKA α -subunit was observed in the non-LR fraction.

290 In milkfish (Fig. 2), similar results were observed at 30-minutes treatments with
291 the non-ionic detergent 0.1% Triton X-100 as tilapia reacted with Triton X-100 (Fig.
292 1). However, after 60 and 120 minutes of reaction with 0.1% Triton X-100, there was
293 no flotillin-2 and NKA α -subunit immunoreactive band found in the non-LR
294 membrane fraction, indicating that the LR of milkfish gills could be separated after
295 0.1% Triton X-100 dissolution following 60 minutes of incubation. The NKA
296 α -subunit abundance was high in the LR fraction (Fig. 2). Hence, extraction of LR by
297 0.1% Triton X-100 for 60 minutes is an appropriate procedure for LR purification
298 from milkfish gills.

299

300 **Comparisons of flotillin-2 and NKA in branchial LR and non-LR fractions** 301 **between FW and SW tilapia and milkfish**

302 As illustrated in Fig. 1, tilapia gills treated with 0.05% Tween-20 for 60 minutes
303 revealed better dissolvability in LR membrane fractions. This condition has thus been

304 used to compare salinity effects on LR and non-LR gill fractions of tilapia. Flotillin-2
305 and NKA α -subunit protein levels were only detected in the LR of both FW and SW
306 tilapia. The abundance of flotillin-2 in LR was significantly (2 times) higher in the
307 FW group than in the SW group (Fig. 3A). On the contrary, the abundance of NKA
308 α -subunit in LR of SW tilapia was 1.4 times higher than that of FW fish (Fig. 3B).

309 Similarly, flotillin-2 and NKA α -subunit protein levels were only detected in the
310 LR of both FW and SW milkfish using 0.1% Triton X-100 as detergent for 60 minutes
311 (Fig. 4). In milkfish LR, no significant difference was found in the abundance of
312 flotillin-2 between FW and SW groups (Fig. 4A). Significantly higher (4.4 times)
313 NKA α -subunit abundance was detected in LR of FW milkfish compared to the SW
314 LR group (Fig. 4B).

315

316 **Comparisons of VHA A abundance in branchial LR and non-LR fractions** 317 **between FW and SW tilapia and milkfish**

318 In tilapia, a specific immunoreactive band of 69 kDa was detected in branchial
319 LR and non-LR fractions (Fig. 5A). Most VHA A was located in the non-LR (mem)
320 compared to LR. In addition, significant higher VHA A abundance was detected in
321 both non-LR (mem) and LR fraction of the FW group compared to those of the SW
322 group. (Fig. 5B).

323 Two immunoreactive bands corresponding to 69 and 60 kDa were detected as the
324 isoform 1 and 2, respectively, of the VHA A subunit of milkfish gills (Fig. 6A).

325 Similar to tilapia VHA A, relative abundance of milkfish VHA A isoform 1 and 2 was
326 significantly higher in the non-LR fraction rather than the LR fraction (Fig. 6B, 6C).

327 Moreover, significantly higher amounts of both isoform 1 (about 2 times; Fig. 6B)
328 and isoform 2 (about 1.5 times; Fig. 6C) of milkfish VHA A subunit were found in
329 the non-LR fraction of the FW group compared to the SW group. In the LR fraction

330 of gills, however, no significant difference was found between FW and SW milkfish
331 in either isoform 1 (Fig. 6B) or isoform 2 (Fig. 6C) of VHA A subunit.
332

333 **Discussion**

334 This study revealed that Triton X-100 had better dissolvability for extracting LR
335 from gills of milkfish rather than tilapia due to the weakly immunoreactive bands of
336 flotillin and NKA found in the non-LR fractions of tilapia gills. LR and non-LR
337 membrane regions of tilapia were isolated more efficiently using Tween 20 as
338 detergent. LR extraction efficacy from Madin-Darby canine kidney (MDCK) cells has
339 been previously reported for various surfactants. It was found that the membrane
340 dissolving effects of Triton X-100 and CHAPS used to extract the LR-protein were 10
341 times higher than using Tween 20, Brij58, and Lubrol WX. Moreover, the
342 Madin-Darby canine kidney (MDCK) cell and MDCK cells expressing human PLAP
343 (MDCK-PLAP) cell revealed better results in LR extraction by using Triton X-100 as
344 a detergent compared to Tween 20, indicating that Triton X-100 had a higher ability to
345 dissolve lipid structures than Tween 20 (Schuck et al., 2003). The detergent efficacy
346 results in this study also showed that the strength of the detergents required for LR
347 extraction in various fish species differed and thus had to be adjusted for each species
348 in order to have optimal LR isolations. It has to be noted that when different
349 detergents are used, LR composition might be slightly different (Schuck et al., 2003).
350 Differences in SLs and cholesterol-rich fatty acids abundance found among various
351 species may lead to different efficacy of detergents (Schuck et al., 2003; Lingwood et
352 al., 2005; Brogden et al., 2014). As a result, different efficacy of detergents between
353 tilapia and milkfish found in this study might be attributed to more abundant SLs and
354 cholesterol-rich fatty acids in LR of milkfish than tilapia, requiring a more efficient
355 detergent to extract LR from other portions of the membranes.

356 LR are known to act as signaling and sorting platforms for numerous molecules
357 (Simons and Toomre, 2000; Smart et al., 1999), and proteins forming the scaffolding
358 of LR (Babuke et al., 2009). Flotillins have generally been used as marker proteins for

359 LR (Bickel et al., 1997; Neumann-Giesen et al., 2004, 2007). In addition, specific
360 GPI-anchored proteins have been observed to co-cluster with flotillins. So, flotillins
361 have been proposed to represent centers for GPI-anchored proteins' communication
362 with intracellular signal transduction molecules (Stuermer and Plattner, 2004). They
363 have also been reported to play the roles in trafficking and transport of membrane
364 proteins and materials (Stuermer, 2010). Our results in different species provided
365 evidence that LR are differentially expressed in different euryhaline fish regarding
366 salinity acclimation by assessing the expression patterns of the LR marker, flotillin-2.
367 LR abundance (i.e., flotillin-2 abundance) in gills was significantly higher in FW than
368 in SW tilapia while there was slightly but not significantly higher expression of
369 flotillin-2 in gills of FW compared to SW milkfish. Differential LR abundance might
370 affect transporter function, as the membrane lipid environment is essential for the
371 functioning of transporters and channels. Until now, evidence on the link between LR
372 and salinity acclimation was only reported in few species. In skate, the anion
373 exchanger 1, for example, was present in intracellular vesicles in detergent-insoluble
374 lipid raft in isotonic conditions and shifted to detergent-soluble plasma membrane
375 regions through exocytosis following hypotonicity treatment (Musch et al., 2004).

376 NKA α -subunit protein abundance (membrane fractions protein) in gills of
377 FW-preference tilapia was significantly higher in SW than in FW (Lee et al. 2003; Lin
378 et al., 2004), while in gills of SW-preference milkfish it was significantly higher in
379 FW than in SW (Lin et al., 2003). This study further revealed that average LR
380 abundance in tilapia gills was significantly higher (two folds) in the FW group than
381 the SW group, while in milkfish gills LR abundance was similar between FW and SW
382 individuals. In addition, the presence of NKA proteins in LR is positively correlated
383 to NKA activities because they were also reported to be higher in gills of the FW
384 milkfish (Lin et al., 2003) as well as SW tilapia (Uchida et al., 2000). Our results thus

385 echoed previous studies on NKA expression in membrane fractions of fish gills in
386 tilapia and milkfish (Lee et al. 2003; Lin et al., 2003; Lin et al., 2004).

387 The immunoblots of this study clearly showed high and low abundance of VHA
388 in the non-LR and LR fraction, respectively, of milkfish and tilapia. Contrary to NKA,
389 VHA is more abundant in non-lipid raft fractions and salinity modulation affects only
390 the expression of VHA in those membrane fractions. In FW non-LR fractions, VHA
391 expression was increased compared to SW non-LR fractions in both species.
392 Moreover, this study is the first to reveal the distribution of VHA in both LR and
393 non-LR regions of cell membrane in gills of euryhaline teleosts. The presence of VHA
394 mostly found in non-LR fractions may be due to differential membrane compositions
395 between apical and basolateral membranes with remains to be clarified in future
396 studies.

397

398 **Conclusion**

399 The present study set up the method of LR isolation by extracting the LR from
400 two species of euryhaline teleosts with different salinity preferences. The results
401 indicated that lipid raft isolation should be optimized in different species using
402 different detergents or detergent concentration. Accordingly, NKA was found to
403 distributed exclusively in the LR fraction of both tilapia and milkfish gills. The FW
404 euryhaline species (tilapia) has more abundant (two folds) LR in its native media and
405 about 25% lower NKA expression. The marine euryhaline species (milkfish), however,
406 does not alter LR abundance following salinity changes but increases massive
407 amounts of NKA in the LR fraction. Meanwhile, VHA was first found to be mostly
408 distributed in non-LR fraction where salinity-mediated alterations also occurred in
409 both euryhaline species. Relative VHA abundance in the non-LR fraction was
410 significantly higher in the FW group than the SW group of both euryhaline teleosts

411 regardless of their salinity preferences. With successful separation of LR and non-LR
412 fractions from the crude membrane of fish gills, this study deepened our
413 understanding in distribution of two important ion transporters, NKA and VHA, in
414 cell membranes of euryhaline fish gills under different salinities.

415

416

417 **Acknowledgements**

418 This work was financially supported in part by the Integrative Evolutionary Galliform
419 Genomics (iEGG) and Animal Biotechnology Center from The Feature Area
420 Research Center Program within the framework of the Higher Education Sprout
421 Project by the Ministry of Education (MOE), Taiwan (MOE-109-S-0023-A) to
422 T.H.L. This study was also financially supported in part by the MOST (Ministry of
423 Science and Technology, Taiwan) Research Project
424 (MOST-109-2313-B-005-005-MY3) to T.H.L. and the Taiwan-France ORCHID
425 grants (MOST-108-2911-I-005-507) to T.H.L. and C.L.N..

426

427 **Competing interests**

428 No competing interests declared.

429 **References**

- 430 Abriel H., Hasler U., Geering K., Horisberger J.D. 1999. Role of the intracellular
431 domain of the β subunit in Na,K pump function. *Biochim Biophys Acta-*
432 *Biomembranes* 1418:85-96.
- 433 Banning A., Tomasovic A., Tikkanen R. 2011. Functional aspects of membrane
434 association of reggie/flotillin proteins. *Curr Protein Pept Sci* 12:725-735.
- 435 Babuke, T., Ruonala, M., Meister, M., Amaddii, M., Genzler, C., Esposito, A.,
436 Tikkanen, R. 2009. Hetero-oligomerization of reggie-1/flotillin-2 and
437 reggie-2/flotillin-1 is required for their endocytosis. *Cellular signalling*, 21(8),
438 1287-1297.
- 439 Bickel P.E., Scherer P.E., Schnitzer J.E., Oh P., Lisanti M.P., Lodish H.F. 1997.
440 Flotillin and epidermal surface antigen define a new family of
441 caveolae-associated integral membrane proteins. *J Biol Chem*
442 272:13793-13802.
- 443 Brogden G., Propsting M., Adamek M., Naim H.Y., Steinhagen D. 2014. Isolation
444 and analysis of membrane lipids and lipid raft in common carp (*Cyprinus*
445 *carpio* L.). *Comp Biochem Physiol B Biochem Mol Biol* 169:9-15.
- 446 Brown D.A., London E. 1998. Functions of lipid raft in biological membranes. *Annu*
447 *Rev Cell Dev Biol* 14:111-136.
- 448 Brown D.A., Rose J.K. 1992. Sorting of GPI-anchored proteins to glycolipid-enriched
449 membrane subdomains during transport to the apical cell surface. *Cell*
450 68:533-544.
- 451 Chen Y., Li X., Ye Q., Tian J., Jing R., Xie Z. 2011. Regulation of $\alpha 1$ Na/K-ATPase
452 expression by cholesterol. *J Biol Chem* 286:15517–15524
- 453 Contreras F.X., Ernst A.M., Wieland F., Brugger B. 2011. Specificity of
454 intramembrane protein-lipid interactions. *Cold Spring Harb Perspect Biol*
455 3:a004705.
- 456 Cornelius F. 2008. Cholesterol-dependent interaction of polyunsaturated
457 phospholipids with Na,K-ATPase. *Biochemistry* 47:1652–1658.
- 458 Cornelius F, Habeck M, Kanai R, Toyoshima C, Karlisch SJ. 2015. General and
459 specific lipid-protein interactions in Na,K-ATPase. *Biochim Biophys Acta*
460 1848:1729 –1743.
- 461 Cossins A.R., Lee J.A.C., Lewis R.N., Bowler K. 1986. The adaptation to cold of
462 membrane order and (Na⁺/K⁺)-ATPase properties. In: Heller HC (Ed) *Living*
463 *in the Cold*. Elsevier Amsterdam pp:77–90.
- 464 Dalskov S.M., Immerdal L., Niels-Christiansen L.L., Hansen G.H., Schousboe A.,
465 Danielsen E.M. 2005. Lipid raft localization of GABAA receptor and Na⁺,
466 K⁺-ATPase in discrete microdomain clusters in rat cerebellar granule cells.

467 Neurochem Int 46:489-499.

468 Drevot P., Langlet C., Guo X.J., Bernard A.M., Colard O., Chauvin J.P., He H.T.
469 2002. TCR signal initiation machinery is pre-assembled and activated in a
470 subset of membrane raft. The EMBO journal 21:1899-1908.

471 Eckert G.P., Igbavboa U., Müller W.E., Wood W.G. 2003. Lipid raft of purified
472 mouse brain synaptosomes prepared with or without detergent reveal different
473 lipid and protein domains. Brain research 962:144-150.

474 Fenwick J. C., Bonga S. W., Flik G. 1999. In vivo bafilomycin-sensitive Na (+)
475 uptake in young freshwater fish. Journal of Experimental Biology, 202(24),
476 3659-3666.

477 Forgac M. 2007. Vacuolar ATPases: rotary proton pumps in physiology and
478 pathophysiology. Nat Rev Mol Cell Biol 8:917-929.

479 Foster L.J., Chan Q.W. 2007. Lipid raft proteomics: more than just detergent-resistant
480 membranes. Subcell Biochem 43:35-47.

481 Garcia-Garcia E., Grayfer L., Stafford J.L., Belosevic M. 2012. Evidence for the
482 presence of functional lipid raft in immune cells of ectothermic organisms.
483 Dev Comp Immunol 37:257-269.

484 Gylfason G. A., Knútsdóttir E., Ásgeirsson B. 2010. Isolation and biochemical
485 characterisation of lipid raft from Atlantic cod (*Gadus morhua*) intestinal
486 enterocytes. Comp Biochem Physiol B Biochem Mol Biol 155:86-95.

487 Harris W.E. 1985. Modulation of (Na⁺, K⁺)-ATPase activity by the lipid bilayer
488 examined with dansylated phosphatidylserine. Biochemistry 24:2873–2883.

489 Harvey W.R., Maddrell S.H., Telfer W.H., Wieczorek H. 1998. H⁺ V-ATPases
490 energize animal plasma membranes for secretion and absorption of ions and
491 fluids. Am Zool 38:426-441.

492 Haviv H., Habeck M., Kanai R., Toyoshima C., Karlisch S.J. 2013. Neutral
493 phospholipids stimulate Na,K-ATPase activity: a specific lipid-protein
494 interaction. J Biol Chem 288:10073-10081.

495 Hirose S., Kaneko T., Naito N., Takei Y. 2003. Molecular biology of major
496 components of chloride cells. Comp Biochem Physiol B Biochem Mol Biol,
497 136:593-620.

498 Hu Y.C., Kang C.K., Tang C.H., Lee T.H. 2015. Transcriptomic analysis of metabolic
499 pathways in milkfish that respond to salinity and temperature changes. PLoS
500 One 10:e0134959.

501 Katoh F., Hyodo S., Kaneko T. 2003. Vacuolar-type proton pump in the basolateral
502 plasma membrane energizes ion uptake in branchial mitochondria-rich cells of
503 killifish *Fundulus heteroclitus*, adapted to a low ion environment. J Exp Biol
504 206:793-803.

505 Kelly S.P., Chow I.N., Woo N.Y. 1999. Haloplasticity of black seabream (*Mylio*
506 *macrocephalus*): hypersaline to freshwater acclimation. J Exp Zool
507 283:226-241.

508 Kravtsova V.V., Petrov A.M., Vasil'ev A.N., Zefirov A.L., Krivoi I.I. 2015. Role of
509 cholesterol in the maintenance of endplate electrogenesis in rat diaphragm.
510 Bull Exp Biol Med 158: 298-300.

511 Lafourcade C., Sobo K., Kieffer-Jaquinod S., Garin J., Van Der Goot F.G. 2008.
512 Regulation of the V-ATPase along the endocytic pathway occurs through
513 reversible subunit association and membrane localization. PloS one 3:e2758.

514 Langhorst M.F., Reuter A., Stuermer C.A. 2006. Scaffolding microdomains and
515 beyond: the function of reggie/flotillin proteins. Cell Mol Life Sci 62:2228–
516 2240.

517 Lee T. H., Feng S. H., Lin C. H., Hwang Y. H., Huang C. L., Hwang P. P. 2003.
518 Ambient salinity modulates the expression of sodium pumps in branchial
519 mitochondria-rich cells of Mozambique tilapia, *Oreochromis*
520 *mossambicus*. *Zoological science*, 20(1), 29-36.

521 Levental I., Lingwood D., Grzybek M., Coskun U., Simons K. 2010. Palmitoylation
522 regulates raft affinity for the majority of integral raft proteins. Proc Natl Acad
523 Sci 107:22050-22054.

524 Lin H., Randall D.J. 1993. H⁺-ATPase activity in crude homogenates of fish gill
525 tissue: inhibitor sensitivity and environmental and hormonal regulation. J Exp
526 Biol 180:163-174.

527 Lin H., Pfeiffer D., Vogl A., Pan J., Randall D. 1994. Immunolocalization of
528 H⁺-ATPase in the gill epithelia of rainbow trout. J Exp Biol 195:169-183.

529 Lin Y.M., Chen C.N., Lee T.H. 2003. The expression of gill Na, K-ATPase in
530 milkfish, *Chanos chanos*, acclimated to seawater, brackish water and fresh
531 water. Comp Biochem Physiol A Mol Integr Physiol 135:489-497.

532 Lin C.H., Huang C.L., Yang C.H., Lee T.H., Hwang P.P. 2004. Time-course changes
533 in the expression of Na, K-ATPase and the morphometry of mitochondrion-
534 rich cells in gills of euryhaline tilapia (*Oreochromis mossambicus*) during
535 freshwater acclimation. J Exp Zool Part A 301:85-96.

536 Lingwood D., Harauz G., Ballantyne J.S. 2005. Regulation of fish gill
537 Na⁺-K⁺-ATPase by selective sulfatide-enriched raft partitioning during
538 seawater adaptation. J Biol Chem 280:36545-36550.

539 Lingwood D., Simons K. 2010. Lipid raft as a membrane-organizing principle.
540 Science 327:46-50.

541 Liu J., DeYoung S.M., Zhang M., Dold L.H., Saltiel A.R. 2005. The
542 stomatin/prohibitin/flotillin/HflK/C domain of flotillin-1 contains distinct

543 sequences that direct plasma membrane localization and protein interactions in
544 3T3-L1 adipocytes. *J Biol Chem* 280:16125-16134.

545 Madore N., Smith K.L., Graham C.H., Jen A., Brady K., Hall S., Morris R. 1999.
546 Functionally different GPI proteins are organized in different domains on the
547 neuronal surface. *The EMBO journal* 18:6917-6926.

548 Mancera J.M., Carrión, R.L., del Rio M.P.M. 2002. Osmoregulatory action of PRL,
549 GH, and cortisol in the gilthead seabream (*Sparus aurata* L.). *Gen Comp*
550 *Endocrinol* 129:95-103.

551 Marshall W.S. 2002. Na⁺, Cl⁻, Ca²⁺ and Zn²⁺ transport by fish gills: retrospective
552 review and prospective synthesis. *J Exp Zool A Ecol Genet Physiol*
553 293:264-283.

554 Marshall W., Bryson S. 1998. Transport mechanisms of seawater teleost chloride cells:
555 an inclusive model of a multifunctional cell. *Comp Biochem Physiol A Mol*
556 *Integr Physiol* 119:97-106.

557 McGuinn, K. P., Mahoney, M. G. 2014. Lipid rafts and detergent-resistant
558 membranes in epithelial keratinocytes. In *Epidermal Cells* (pp. 133-144).
559 Springer, New York, NY.

560 Morrow I.C., Rea S., Martin S., Prior I.A., Prohaska R., Hancock J.F., James D.E.,
561 Parton R.G. 2002. Flotillin-1/reggie-2 traffics to surface raft domains via a
562 novel golgi-independent pathway. Identification of a novel membrane
563 targeting domain and a role for palmitoylation. *J Biol Chem* 277:48834-48841.

564 Murtazina R., Kovbasnjuk O., Donowitz M., Li X. 2006. Na⁺/H⁺ exchanger NHE3
565 activity and trafficking are lipid raft-dependent. *J Biol Chem* 281: 17845–
566 17855.

567 Musch M.W., Koomoa D.L., Goldstein L. 2004. Hypotonicity-induced exocytosis of
568 the skate anion exchanger skAE1: role of lipid raft regions. *J Biol Chem*
569 279:39447-39453.

570 Neumann-Giesen C., Falkenbach B., Beicht P., Claasen S., Luers G., Stuermer C.A.,
571 Tikkanen R. 2004. Membrane and raft association of reggie-1/flotillin-2: role
572 of myristoylation, palmitoylation and oligomerization and induction of
573 filopodia by overexpression. *Biochem J* 378:509-518.

574 Neumann-Giesen .C, Fernow I., Amaddii M., Tikkanen R. 2007. Role of
575 EGF-induced tyrosine phosphorylation of reggie-1/flotillin-2 in cell spreading
576 and signaling to the actin cytoskeleton. *J Cell Sci* 120:395-406.

577 Nguyen D.H., Hildreth J.E. 2000. Evidence for budding of human immunodeficiency
578 virus type 1 selectively from glycolipid-enriched membrane lipid raft. *J. Virol.*
579 74:3264-3272.

580 Nishi T., Forgac M. 2002. The vacuolar (H⁺)-ATPases—nature’s most versatile proton

581 pumps. Nat Rev Mol Cell Biol 3:94-103.

582 Ono A., Freed E.O. 2001. Plasma membrane raft play a critical role in HIV-1
583 assembly and release. Proc Natl Acad Sci USA 98:13925-13930.

584 Perry S.F., Furimsky M., Bayaa M., Georgalis T., Shahsavarani A., Nickerson J.G.,
585 Moon T.W. 2003. Integrated responses of Na⁺/HCO₃⁻ cotransporters and
586 V-type H⁺-ATPases in the fish gill and kidney during respiratory acidosis.
587 Biochim Biophys Acta 1618:175–184.

588 Piermarini P.M., Evans D.H. 2001. Immunochemical analysis of the vacuolar
589 proton-ATPase B-subunit in the gills of a euryhaline stingray (*Dasyatis*
590 *sabina*): effects of salinity and relation to Na⁺/K⁺-ATPase. J Exp Biol
591 204:3251-3259.

592 Pike L.J. 2006. Raft defined: a report on the keystone symposium on lipid raft and cell
593 function. J Lipid Res 47:1597-1598.

594 Resh M.D. 2006. Palmitoylation of ligands, receptors, and intracellular signaling
595 molecules. Sci STKE 2006:re14.

596 Röper K., Corbeil D., Huttner W.B. 2000. Retention of prominin in microvilli reveals
597 distinct cholesterol-based lipid micro-domains in the apical plasma membrane.
598 Nat Cell Biol 2:582-592.

599 Scheiner-Bobis G. 2002. The sodium pump. Eur J Biochem 269:2424-2433.

600 Schroeder R.J., Ahmed S.N., Zhu Y., London E., Brown D.A. 1998. Cholesterol and
601 sphingolipid enhance the Triton X-100 insolubility of
602 glycosylphosphatidylinositol-anchored proteins by promoting the formation of
603 detergent-insoluble ordered membrane domains. J Biol Chem 273:1150-1157.

604 Schuck S., Honsho M., Ekroos K., Shevchenko A., Simons K. 2003. Resistance of
605 cell membranes to different detergents. Proc Natl Acad Sci USA
606 100:5795-5800.

607 Scott G.R., Richards J.G., Forbush B., Isenring P., Schulte P.M., 2004. Changes in
608 gene expression in gills of the euryhaline killifish *Fundulus heteroclitus* after
609 abrupt salinity transfer. Am J Physiol Cell Physiol 287:C300-C309.

610 Skou J.C., Esmann M. 1992. The Na, K-ATPase. J Bioenerg Biomembr 24:249.

611 Simons K, Ikonen E. 1997. Functional raft in cell membranes. Nature 387:569-572.

612 Simons K, Toomre D. 2000. Lipid raft and signal transduction. Nat Rev Mol Cell Biol
613 1:31–39.

614 Smart, E. J., Graf, G. A., McNiven, M. A., Sessa, W. C., Engelman, J. A., Scherer, P.
615 E., Okamoto, T., Lisanti, M. P. 1999. Caveolins, liquid-ordered domains, and
616 signal transduction. Molecular and cellular biology, 19(11), 7289-7304.

617 Stuermer C.A.O. 2010. The reggie/flotillin connection to axon growth. Trends Cell
618 Biol 20:6–13.

619 Stuermer C.A.O, Plattner H. 2004. The “lipid raft”/microdomain proteins reggie-1 and
620 reggie-2 (flotillins) form scaffolds for protein interactions and signaling.
621 Biochem Soc Symp 72:109–118.

622 Tang C.H., Lee T.H. 2010. Ion-deficient environment induces the expression of
623 basolateral chloride channel, ClC-3-like protein, in gill mitochondrion-rich
624 cells for chloride uptake of the tilapia *Oreochromis mossambicus*. Physiol
625 Biochem Zool 84:54-67.

626 Tillman T.S., Cascio M. 2003. Effects of membrane lipids on ion channel structure
627 and function. Cell Biochem Biophys 38:161-190.

628 Toei M., Saum R., Forgac M. 2010. Regulation and isoform function of the
629 V-ATPases. Biochemistry 49:4715-4723.

630 Uchida K., Kaneko T., Miyazaki H., Hasegawa S., Hirano T. 2000. Excellent salinity
631 tolerance of Mozambique tilapia (*Oreochromis mossambicus*): elevated
632 chloride cell activity in the branchial and opercular epithelia of the fish
633 adapted to concentrated seawater. Zool Sci 17:149-160.

634 Varma R., Mayor S. 1998. GPI-Anchored Proteins Are Organized in Submicron
635 Domains at the Cell Surface. Nature 394:798-801.

636 von Philipsborn A.C., Ferrer-Vaquer A., Rivera-Milla E., Stuermer C.A.,
637 Malaga-Trillo E. 2005. Restricted expression of reggie genes and proteins
638 during early zebrafish development. J Comp Neurol 482:257-272.

639 Welker P., Geist B., Fruhauf J.H., Salanova M., Groneberg D.A., Krause E.,
640 Bachmann S. 2007. Role of lipid raft in membrane delivery of renal epithelial
641 Na⁺-K⁺-ATPase, thick ascending limb. Am J Physiol Regul Integr Comp
642 Physiol 292:R1328-R1337.

643 Yang S.H., Kang C.K., Hu Y.C., Yen L.C., Lee T.H. 2015. Comparisons of two types
644 of teleostean pseudobranchs, silver moony (*Monodactylus argenteus*) and
645 tilapia (*Oreochromis mossambicus*), with salinity-dependent morphology and
646 ion transporter expression. J Comp Physiol B 185:677-693.

647 Yoshinaka K., Kumanogoh H., Nakamura S., Maekawa S. 2004. Identification of
648 V-ATPase as a major component in the raft fraction prepared from the
649 synaptic plasma membrane and the synaptic vesicle of rat brain. Neurosci Lett
650 363:168-172.

651

652

Figure legends

653 **Fig. 1** Expression of NKA α -subunit (NKA) and flotillin-2 protein in lipid raft of fresh
654 water (FW) tilapia gills after digestion with 0.1% Triton X-100 for 30, 60,
655 and 120 min, as well as 0.05% Triton X-100 and 0.05% Tween-20 for 60 min.
656 Immunoblots revealed an immunoreactive band in each condition with a
657 molecular mass of 100 kDa (NKA α -subunit) and 48 kDa (flotillin-2). "mem",
658 non-lipid raft; "raft", lipid raft. The tilapia were reared in brackish water (15
659 ‰) for two weeks and then acclimated to FW for four weeks before
660 experiments.

661 **Fig. 2** Expression of NKA α -subunit (NKA) and flotillin-2 protein in lipid raft of
662 seawater (SW) milkfish gills after digestion with 0.1% Triton X-100 for 30,
663 60, and 120 min. The immunoblots revealed an immunoreactive band in each
664 condition with a molecular mass of 100 kDa (NKA α -subunit) and 48 kDa
665 (flotillin-2), respectively. "mem", non-lipid raft; "raft", lipid raft. The
666 milkfish were reared in brackish water (15 ‰) for two weeks and then
667 acclimated to SW for four weeks before experiments.

668 **Fig. 3** Relative protein abundance of (A) flotillin-2 (Flotillin) and (B) NKA α -subunit
669 (NKA) in lipid raft (raft) and non-lipid raft (mem) fractions in gills of
670 seawater (SW) and freshwater (FW) tilapia. The representative immunoblots
671 showed an immunoreactive band in each environment with a molecular mass
672 of (A) 48 kDa (flotillin-2) and (B) 100 kDa (NKA α -subunit). The asterisk
673 indicated the significant difference of protein abundance in branchial lipid
674 raft (raft) fractions between the SW and the FW groups. The pound signs
675 indicated significant differences of protein abundance between the lipid raft
676 (raft) and non-lipid raft (mem) fractions of either SW or FW tilapia gills. N/A,

677 not detected. (n = 6, mean ± S.E.M., t-test, P < 0.05). The tilapia were reared
678 in brackish water (15 ‰) for two weeks and then acclimated to either FW or
679 SW for four weeks before experiments.

680 **Fig. 4** Relative protein abundance of (A) flotillin-2 (Flotillin) and (B) NKA α - subunit
681 (NKA) in lipid raft (raft) and non-lipid raft (mem) fractions in gills of
682 seawater (SW) and freshwater (FW) milkfish. The representative
683 immunoblots showed an immunoreactive band in each environment with a
684 molecular mass of (A) 48 kDa (flotillin-2) and (B) 100 kDa (NKA α -subunit).
685 The asterisk indicated the significant difference of NKA abundance between
686 the SW and FW groups in lipid raft (raft) or non-lipid raft (mem) fractions.
687 The pound signs indicated significant differences of protein abundance
688 between the lipid raft (raft) and non-lipid raft (mem) fractions of either SW
689 or FW milkfish gills. N/A, not detected. (n = 6, mean ± S.E.M., t-test, P <
690 0.05). The milkfish were reared in brackish water (15 ‰) for two weeks and
691 then acclimated to either FW or SW for four weeks before experiments.

692

693 **Fig. 5** Relative protein abundance of V-type H⁺-ATPase A subunit (VHA A) in lipid
694 raft (raft) and non-lipid raft (mem) fractions in gills of seawater (SW) and
695 freshwater (FW) tilapia. (A) The representative immunoblot showed an
696 immunoreactive band in each group with a molecular mass of 68 kDa. (B)
697 The asterisks indicated significant differences of VHA A abundance between
698 the SW and FW groups in lipid raft (raft) or non-lipid raft (mem) fractions.
699 The pound signs indicated significant differences of VHA A abundance
700 between the lipid raft (raft) and non-lipid raft (mem) fractions of either SW
701 or FW tilapia gills. N/A, not detected. (n = 6, mean ± S.E.M., t-test, P < 0.05).
702 The tilapia were reared in brackish water (15 ‰) for two weeks and then

703 acclimated to either FW or SW for four weeks before experiments.
704
705 **Fig. 6** Relative protein abundance of V-type H⁺-ATPase A subunit (VHA A) in lipid
706 raft (raft) and non-lipid raft (mem) fractions in gills of seawater (SW) and
707 freshwater (FW) milkfish. The representative immunoblot of V-type
708 H⁺-ATPase A subunit (VHA A) showed two bands at molecular weights of 69
709 kDa (isoform 1) and 60 kDa (isoform 2) (A). Relative protein abundance of
710 VHA A isoform 1 (B) and isoform 2 (C) revealed the significant difference
711 indicated by the asterisk between the SW and FW groups in non-lipid raft
712 (mem) fractions of gills. Meanwhile, the pound signs indicated significant
713 differences in VHA A isoform 1 (B) and isoform 2 (C) between the lipid raft
714 (raft) and non-lipid raft (mem) fractions of either SW or FW milkfish gills. (n
715 = 6, mean ± S.E.M., t-test, P < 0.05). The milkfish were reared in brackish
716 water (15 ‰) for two weeks and then acclimated to either FW or SW for four
717 weeks before experiments.

718

719

720

721

Fig. 1

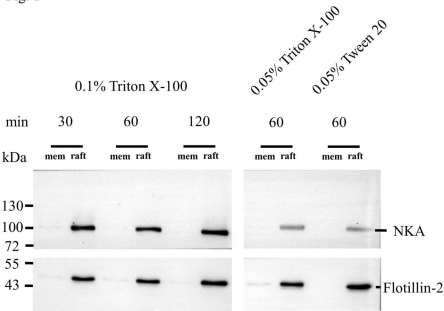


Fig. 2

0.1% Triton X-100

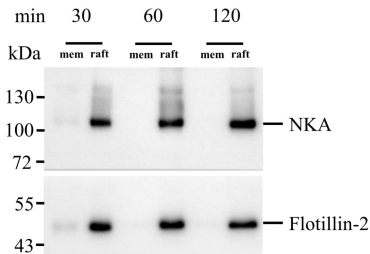


Fig. 3

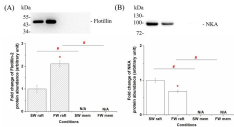


Fig. 4

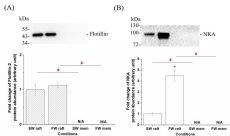


Fig. 5

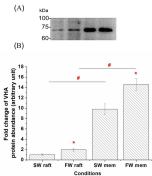
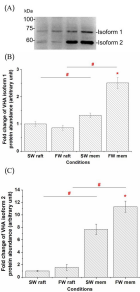


Fig. 6





Tilapia (*Oreochromis mossambicus*)



Milkfish (*Chanos chanos*)

Fresh water

VS

Seawater (35‰)



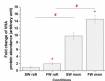
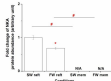
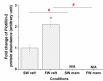
Gills

Establishing lipid raft (LR) isolation method

Flotillin-2
(LR marker)

Na⁺, K⁺-ATPase
(NKA)

V-type H⁺-ATPase
(VHA)



Tilapia



Milkfish