



HAL
open science

Mitochondrial morphology is associated with respiratory chain uncoupling in autism spectrum disorder

Richard E Frye, Loïc Lionnard, Indrapal Singh, Mohammad A Karim, Hanane Chajra, Mathilde Frechet, Karima Kissa, Victor Racine, Amrit Ammanamanchi, Patrick John Mccarty, et al.

► To cite this version:

Richard E Frye, Loïc Lionnard, Indrapal Singh, Mohammad A Karim, Hanane Chajra, et al.. Mitochondrial morphology is associated with respiratory chain uncoupling in autism spectrum disorder. *Translational Psychiatry*, 2021, 11 (1), pp.527. 10.1038/s41398-021-01647-6 . hal-03388170

HAL Id: hal-03388170

<https://hal.umontpellier.fr/hal-03388170>

Submitted on 20 Oct 2021

HAL is a multi-disciplinary open access archive for the deposit and dissemination of scientific research documents, whether they are published or not. The documents may come from teaching and research institutions in France or abroad, or from public or private research centers.

L'archive ouverte pluridisciplinaire **HAL**, est destinée au dépôt et à la diffusion de documents scientifiques de niveau recherche, publiés ou non, émanant des établissements d'enseignement et de recherche français ou étrangers, des laboratoires publics ou privés.



Distributed under a Creative Commons Attribution 4.0 International License

ARTICLE OPEN



Mitochondrial morphology is associated with respiratory chain uncoupling in autism spectrum disorder

Richard E. Frye^{1,2,8}✉, Loïc Lionnard³, Indrapal Singh^{1,2}, Mohammad A. Karim^{1,2}, Hanane Chajra⁴, Mathilde Frechet⁴, Karima Kissa⁵, Victor Racine⁶, Amrit Ammanamanchi^{1,2}, Patrick John McCarty^{1,2}, Leanna Delhey⁷, Marie Tippet⁷, Shannon Rose⁷ and Abdel Ouacheria^{3,8}

© The Author(s) 2021

Autism spectrum disorder (ASD) is a neurodevelopmental disorder that is associated with unique changes in mitochondrial metabolism, including elevated respiration rates and morphological alterations. We examined electron transport chain (ETC) complex activity in fibroblasts derived from 18 children with ASD as well as mitochondrial morphology measurements in fibroblasts derived from the ASD participants and four typically developing controls. In ASD participants, symptoms severity was measured by the Social Responsiveness Scale and Aberrant Behavior Checklist. Mixed-model regression demonstrated that alterations in mitochondrial morphology were associated with both ETC Complex I+III and IV activity as well as the difference between ETC Complex I+III and IV activity. The subgroup of ASD participants with relative elevation in Complex IV activity demonstrated more typical mitochondrial morphology and milder ASD related symptoms. This study is limited by sample size given the invasive nature of obtaining fibroblasts from children. Furthermore, since mitochondrial function is heterogeneous across tissues, the result may be specific to fibroblast respiration. Previous studies have separately described elevated ETC Complex IV activity and changes in mitochondrial morphology in cells derived from children with ASD but this is the first study to link these two findings in mitochondrial metabolism. The association between a difference in ETC complex I+III and IV activity and normal morphology suggests that mitochondrial in individuals with ASD may require ETC uncoupling to function optimally. Further studies should assess the molecular mechanisms behind these unique metabolic changes.

Trial registration: Protocols used in this study were registered in clinicaltrials.gov as NCT02000284 and NCT02003170.

Translational Psychiatry (2021)11:527; <https://doi.org/10.1038/s41398-021-01647-6>

INTRODUCTION

Autism spectrum disorder (ASD) is a neurodevelopmental disorder that is characterized by deficits in social-communication along with restrictive and repetitive behaviors and interests [1]. Although diagnosing ASD can be complicated [2], the diagnosis is currently defined by a specific pattern of behavior which is outlined in the Diagnostic Statistical Manual of Mental Disorders Version 5 [1]. The Centers for Disease Control and Prevention funded Autism and Developmental Disabilities Monitoring Network currently estimates that ASD affects 1 in 54 children in the United States [3]. Despite decades of research, the etiology of ASD remains uncertain in most cases. Even though ASD is highly heritable, inherited genetic defects are rare [4] and most identified genetic mutations are de novo [5, 6]. For example, unbiased empirical clinical genetic evaluations show a low yield (~16%) even when using both chromosomal microarray and whole exome sequencing [7] and most of the time (69%) siblings with ASD have different de novo mutation [8].

Environmental exposures [9], especially during the prenatal period [10], may have a major role in modulating the risk of developing ASD. Indeed, it is now believed that ASD may arise from an interaction between genetic predisposition and environmental exposures [11, 12] including the availability of essential nutrients such as folate during the prenatal and preconception period [13]. For example, polymorphisms associated with one-carbon metabolism found in either the offspring [14] or mother [15] and autoantibodies that block folate transport into the brain and across the placenta [16] are associated with ASD, demonstrating that underlying weaknesses in the folate pathway might interact with environmental (folate intake) factors to increase the risk of ASD [13]. Likewise, multiple prenatal nutritional and toxicant exposures may disrupt physiology during prenatal development [10], particularly mitochondrial homeostasis [17]. Indeed, recent studies have linked long-term changes in mitochondrial function in children with ASD to prenatal environmental exposures [10, 17], including air pollution [18] and essential metals including Zn, Cu, and Mn [19, 20].

¹Phoenix Children's Hospital, Phoenix, AZ, USA. ²University of Arizona College of Medicine – Phoenix, Phoenix, AZ, USA. ³Institut des Sciences de l'Evolution de Montpellier, UMR 5554 CNRS, UM, IRD, EPHE, Université de Montpellier, Place Eugène Bataillon, 34095 Montpellier cedex 05, France. ⁴Clariant Active ingredients, 195 Route d'Espagne, 31036 Toulouse Cedex 1, France. ⁵LPHI, CNRS, INSERM, Emergence of Haematopoietic Stem Cells and Cancer, Univ Montpellier, Montpellier, France. ⁶QuantaCell SAS, 2 allée du Doyen Georges Brus, 33600 Pessac, France. ⁷Arkansas Children's Research Institute, Little Rock, AR, USA. ⁸These authors contributed equally: Richard E. Frye, Abdel Ouacheria. ✉email: rfrye@phoenixchildrens.com

Received: 3 June 2021 Revised: 20 September 2021 Accepted: 29 September 2021

Published online: 13 October 2021

Best known for their role in adenosine triphosphate (ATP) production, mitochondria are also integrally involved in a variety of important cellular functions such as calcium buffering, redox regulation, apoptosis and inflammation [21–23]. Interestingly, studies have demonstrated that 30–50% of individuals with ASD demonstrate biomarkers of abnormal mitochondrial function [24, 25], while 80% of children with ASD may manifest abnormal electron transport chain (ETC) activity in immune cells [26, 27]. Compelling for ASD, many toxicants and nutrients associated with ASD risk can influence mitochondrial respiration [17].

Abnormalities in mitochondrial function have been linked to symptomatology in children with ASD. For example, a diagnosis of mitochondrial disease in children with ASD has been linked to fatigability, gastrointestinal disorders and unusual types of neurodevelopmental regression (NDR) including multiple regressions or regression later than commonly associated with ASD [28], seizures/epilepsy and motor delay [24] as well as other clinical abnormalities commonly associated with mitochondrial diseases such as developmental delays, ataxia, muscle weakness, peripheral neuropathy, endocrinology abnormalities, and failure to thrive [29].

One of the most compelling links between mitochondrial dysfunction and ASD symptomatology is the subset of children with NDR. Indeed, the majority of children with ASD who are diagnosed with classic mitochondrial disease have a history of NDR, usually associated with a fever or inflammatory trigger [30]. Recently, NDR was also associated with elevated mitochondrial respiration in peripheral blood mononuclear cells (PBMCs) in children with ASD [31] and this mitochondrial abnormality has been linked to prenatal environmental influences [18, 19].

Unlike individuals diagnosed with classic mitochondrial disease where ETC activity is significantly depressed, some individuals with ASD have elevated ETC activity. Elevation in ETC Complex IV activity was first reported in ASD through muscle biopsy [32] and later confirmed in other tissues, including fibroblasts [33], buccal epithelium [34], brain [35] and lymphoblastoid cell lines (LCLs) [36]. Since ETC Complex IV is the ETC enzyme responsible for oxygen consumption, elevations in ETC Complex IV activity results in enhanced oxygen consumption also known as increased mitochondrial respiration. Parallel to elevations in ETC Complex IV activity, an LCL model of ASD shows elevation in mitochondrial respiration, about 200% of control LCLs, in a subset of ASD individuals [34, 37–43].

Most ETC complexes (I, III, IV) transport protons across the inner mitochondrial membrane in order to create a proton gradient which drives ETC Complex V, also referred to as ATP synthase, to make ATP. The ETC is the major source and target of reactive oxygen species (ROS) such as oxygen radicals. Oxidative stress occurs when ROS become elevated to the point where they can interfere with ETC function. In order to reduce ROS, the mitochondrion leaks protons back across the inner mitochondrial membrane, essentially decreasing the proton gradient and reducing mitochondrial efficiency. This proton leak uncouples the ETC complexes such that the activity across the ETC complexes is unequal. Interesting, the LCLs from individuals with ASD with elevated respiratory rates are associated with greater proton leak, uncoupling of the respiratory chain and superoxide elevation in the mitochondrial compartment [39, 43]. Consistent with this is a relative disassociation between ETC Complex I and IV activity in buccal epithelium from individuals with ASD, suggesting an uncoupling of the respiratory chain [44–46].

Preliminary studies have investigated the molecular regulation and consequences of elevated mitochondrial respiration in individuals with ASD. One study found that the LCLs with elevated mitochondrial respiration do not upregulate genes involved in mitochondrial dynamics and repair (SIRT1, SIRT3, PINK1, MFN2, DRP1, PGC1 α , HIF1 α) as compared to LCLs from children with ASD which have mitochondrial respiration similar to control LCLs [41]. Dysregulation of genes important for mitochondrial dynamics and

repair is consistent with a recent study using nanometer-scale transmission electron microscopy which demonstrated morphological changes in individual mitochondria in fibroblasts from children with ASD and elevated mitochondrial respiration [47].

The discovery that genes involved in mitochondrial dynamics may be involved in variations in mitochondrial respiration in ASD is compelling. Mitochondria constantly undergo cycles of fission and fusion, dynamic processes which maintain mitochondrial health by eliminating dysfunctional mitochondria and repairing damaged mitochondria. Failure of these processes is associated with clinical disease and aging [48, 49]. Mitochondria demonstrate considerable variability in shape and size with morphology varying from long tubules and small spheres. Commonly thought of as an isolated static organelle, mitochondria are now known to form networks that may optimize their function and change subcellular positioning by moving along cytoskeletal tracks to reach sites of high-energy need [50]. Thus, understanding variation in mitochondrial morphology and their link to mitochondrial respiration can provide insight into the significance of mitochondrial function and dysfunction in ASD.

Only nanometer-scale electron microscopy has been used to examine mitochondrial morphology in ASD [47]. Imaging on a nanometer scale cannot quantitatively assess mitochondrial morphology in large numbers of mitochondria or understand mitochondrial positioning and branching in the entire, live cell. Indeed, laser confocal fluorescence microscopy techniques which image on a micrometer scale can measure mitochondrial morphometric characteristics of both individual mitochondria and networks of mitochondria as well as provide information regarding the cellular position of mitochondria [51]. Thus, this study aims to make the connection between quantitative measurements of morphological changes in the mitochondrial reticulum at the whole-cell level with specific changes in mitochondrial respiration in relation to ASD.

MATERIAL AND METHODS

Protocols used in this study were registered in clinicaltrials.gov as NCT02000284 and NCT02003170 and approved by the Institutional Review Board at the University of Arkansas for Medical Sciences (Little Rock, AR).

Participants

Parents of participants provided written informed consent. All participants were recruited from the Arkansas Children's Hospital Autism Multispecialty clinic directed by Dr Richard E Frye (first author).

The ASD diagnosis was documented by at least one of the following criteria: (i) a gold-standard diagnostic instrument such as the Autism Diagnostic Observation Schedule and/or Autism Diagnostic Interview-Revised (ADI-R); (ii) the state of Arkansas diagnostic standard, defined as agreement of a physician, psychologist and speech therapist who specializes in ASD; and/or (iii) Diagnostic Statistical Manual of Mental Disorders diagnosis by a physician along with standardized validated questionnaires including the Social Responsiveness Scale (SRS) [52, 53], the Social Communication Questionnaire [54–56] and the Autism Symptoms Questionnaire [57], all of which have excellent correspondence to gold-standard instruments, along with diagnosis confirmation by the Principal Investigator (first author). In our recent clinical trial [58], we found that methods (ii) and (iii) are consistent with the ADI-R diagnostic criteria for ASD.

In 17 of the 18 ASD participants, ASD symptoms were characterized using standardized instruments, specifically the caretaker completed Aberrant Behavior Checklist (ABC) and SRS [44, 58]. The ABC measures disruptive behaviors commonly associated with ASD and has convergent and divergent validity [59–61]. The SRS measures social skill deficits across five domains and corresponds well with gold-standard instruments [52, 53].

In general, fibroblast samples were obtained for clinical use and then transferred to the research laboratory. For individuals who underwent sedated procedures, most commonly muscle biopsy, the samples were obtained under sedation by the surgeon. For individuals that did not undergo other procedures, Dr Richard E Frye personally obtained the

sample by punch biopsy with local anesthesia. Overall, all available fibroblast samples that were available at the time of analysis were included in this study. Demographics are given in Table 1. Average (SD) age was 7 years 0 months (3 years 7 months), with 72% Male, 78% White and 22% Asian, all without Hispanic ethnicity.

Four control fibroblasts from children of slightly older age [Average (SD) age 10 years 9 months (2 years 1 month)], slightly less males [50% Male] and 100% White race without Hispanic ethnicity who did not manifest any known medical disease or genetic abnormalities were obtained from Coriell Institute for Medical Research (Camden, NJ). Although there are fewer control fibroblasts than ASD fibroblasts, there are several justifications for this. First, control fibroblasts from appropriate age (children) are limited in their availability due to ethical reasons since they require a skin biopsy which is a painful procedure. Second, the variability in mitochondrial function is much greater in individuals with ASD, so a greater number of samples are needed to adequately obtain a representative sample in those with ASD.

Fibroblast processing and culture

Excised skin was placed immediately into 15 mL conical tube containing DMEM (1X) plus Glutamax with 15% fetal bovine serum, 4.5 g/L D-Glucose, 110 mg/ml Sodium Pyruvate and 1% penicillin-streptomycin. Samples were then transferred under sterile hood into separate 15 mL conical tubes containing 2 mL digestion media with DMEM, 20% FBS, 0.25% collagenase type I (Worthington-biochem.com; CLS-1; 235U/mg; lot 49E11273), 0.05% DNase (Sigma Cat# DN25-100MG), and 1% penicillin-streptomycin and placed in upright position in an incubator at 37 °C overnight. The next day the conical tube was vortexed for 20 s to disrupt the skin, separate the epidermis and disintegrate the dermis. The outside of the 15 mL conical tube was sterilized and 3.0 mL of fibroblast culture media (DMEM + glucose, sodium pyruvate, and L-glutamine, 15% FBS, and 1% penicillin-streptomycin) was added. This mixture was pipetted up and down gently to mix thoroughly and then the contents were plated in a T25 tissue

culture flask. The T25 culture flask was incubated and fibroblasts were split using 0.25% trypsin/EDTA when confluent.

Mitochondrial respiratory measurements

Mitochondrial enzyme activity, including ETC and citrate synthase activities, was measured in fibroblasts derived from the ASD participants by one of the few standard clinical laboratories, Baylor Medical Genetics Laboratory (Houston, TX). Normative values (mean, standard deviation) from this laboratory are widely used and widely accepted to define normal and abnormal enzyme activity and used to diagnosis mitochondrial disease by physicians in the United States [62]. Such normative values have been used in previous studies of ETC activity in ASD [33, 63]. Briefly, the assays typically use spectrophotometry to quantify the resulting reaction when substrates are provided for a specific enzyme complex. The portion of ETC Complex I that is sensitive to rotenone (a complex I inhibitor) is also quantified. ETC Complex III activity is measured in combination with ETC Complex I and II for several reasons. First, the substrate for ETC Complex III is Ubiquinol, which is that product of ETC Complex I and II which reduces Ubiquinone to Ubiquinol. Thus, an effective manner for providing substrate to ETC Complex III is through testing along with ETC Complex I or II. Second, testing the combination of ETC Complex II and III together provides an index of CoQ10 deficiency. Third, ETC Complex I and III are part of an ETC super complex which functions most efficiently when the enzymes are functioning together. Examining their activity in combination can provide an index of the function of the super complex. Lastly, ETC Complex V is unstable in isolation, so it is less routinely measured and was not measured in this study.

For the current analysis, ETC activity was normalized into standard deviation (SD) units using these laboratory normative values. For each ETC complex, mean, SD and skewness of the ETC activity were calculated for the fibroblasts gathered from ASD participants. Skewness above or below 1 was considered significant. The number of cases outside the normative range was calculated as the number of cases above or below the 1.96 SD

Table 1. Fibroblast Cell Lines Examined.

Cell line	Age	Gender	Race	Number of experiments	Number of cells	Number of microscope fields
<i>Autism spectrum disorder</i>						
AMC007	5yo	M	White	3	511	44
AMC027	5yo	F	White	3	328	43
AMC109	11yo	F	White	3	400	45
AMC147	6yo	M	White	3	280	45
AMC163	16yo	M	White	3	422	45
AMC234	8yo	F	White	3	370	45
AMC293	7yo	M	Asian	3	384	45
AMC315	6yo	M	White	3	327	45
AMC317	3yo	F	White	3	307	45
AMC410	4yo	M	Asian	3	579	45
AMC439	7yo	M	White	3	630	45
AMC440	3yo	M	White	3	315	45
AMC447	13yo	M	White	3	456	45
AMC507	7yo	M	Asian	3	1043	45
AMC525	5yo	F	White	3	712	45
AMC553	11yo	M	White	3	372	45
AMC565	4yo	M	Asian	3	955	45
AMC582	5yo	M	White	3	445	45
Avg (SD)	7y 0m (3y 7m)	72% Male	78% White	3 (0)	490 (226)	45 (0.5)
<i>Controls</i>						
GM01651	13yo	F	White	3	579	45
GM01864	11yo	M	White	3	202	45
GM02036	11yo	F	White	3	243	45
GM08398	8yo	M	White	3	666	50
Avg (SD)	10y 9m (2y 1m)	50% Male	100% White	3 (0)	423 (234)	46 (2.5)

cutoff (i.e., below 2.5% and above 97.5% of the normal distribution). The significance of the number of cases outside the normal range was calculated using a binomial distribution with $p = 0.975$. A cutoff for significance was set to $p < = 0.001$ given that 14 statistical comparisons were conducted (Bonferroni correction $0.05/14 = 0.004$).

Measurements of mitochondrial morphology

Measurement of mitochondrial morphology was conducted at the Institut des Sciences de l'Evolution de Montpellier (Montpellier, France) on both ASD and control fibroblasts. The laboratory was blind to the diagnosis of any specific sample. Fibroblasts were stained with MitoTracker Red FM, CellMask Green Plasma Membrane Stain (ThermoFisher Scientific) and Hoechst 33342 (Merck) to concomitantly visualize mitochondria, cell membranes and nuclei. This procedure was adapted from our previously published protocol [64]. Following staining, cells were incubated in fresh, pre-warmed phenol-free medium at 37 °C and imaged live within an hour. Live-cell imaging was carried out under a Spinning Disc Nikon TI Andor CSU-W1 confocal microscope with objective set to $\times 60$. Experiments were carried out in triplicate. A total 10,527 cells were examined over 992 microscope fields (Table 1).

Images were processed using the MITO TOUCH[®] proprietary software which will be described in detail elsewhere [65, 66]. Briefly, this computational image analysis program extracts a total of 31 features associated with geometrical (e.g., size, shape, connectivity) and non-geometrical cues (including texture and intensity) that provide a mathematical characterization of mitochondrial morphology and network organization in relation to cellular parameters (such as the shortest distance of mitochondria to the nucleus and to the cell membrane proximal region) (Table 2). As depicted in Fig. 1A, mitochondria clusters are identified and skeletonized. Branching points (black dots) and ending points (green dots) are identified from the skeleton (Fig. 1B). Branching points are used to divide clusters into mitochondrial fragments (Fig. 1C). Metrics are then derived from the cluster and mitochondrial fragments. Metrics represent cellular morphology, mitochondrial cluster morphology, mitochondrial skeleton morphology and mitochondrial cellular location together. Texture features that are usually not easy to capture through naked eye observation were also measured. For example, three measures of the fractal dimension capture the complexity of the mitochondrial structure at different resolutions. Likewise, the Euler number, also known as the Euler-Poincaré characteristic, measures curvature. The mean mitochondrial cluster count provides a relative index of the number of mitochondria per cell.

Statistical analysis

Statistical analysis was performed using PAWS Statistics 18 (SPSS Inc, Quarry Bay, HK). Graphs were produced using Excel version 16.0 (Microsoft Corp, Redmond, WA). A linear mixed-model was used to account for within-subject variation from repeated mitochondrial measurements on the same individual (replicates). Data were normally distributed.

Linear mixed-models expands the general linear model to allow the analysis of data with correlated and nonconstant variability. In other words, the mixed linear model not only models the means of the data but the variances and covariances as well. This is important for data in which the variance may be different across participants. The mixed-model does not require the variability to be the same across participants and allows this variability to be modeled as well as tested. This is important in measures of mitochondrial morphology where variation in morphology may differ across participants given the large number of mitochondria in the cell and the fact that mitochondria exhibit heteroplasmy—the notion that within the same cell, mitochondria can have genetic and functional variation. A detailed explanation of the mixed model is provided below.

The general mixed model is in matrix form

$$y = X\beta + Z\gamma + \epsilon$$

where y is the dependent variable, which in this case is the measure of mitochondrial morphology, X is the design matrix for the fixed effects, which in this case is the standardized ETC activity or group constants, β is a vector containing the parameters of the fixed effects, Z is the design matrix for the random effects, γ contains the parameters of the random effects and ϵ is the variance-covariance matrix of the model error. The key assumption of the mixed model is that both γ and ϵ have the expected value of zero (i.e., $E(\gamma) = 0$ and $E(\epsilon) = 0$) and known covariance structure given by the matrixes $\text{Var}(\gamma)$ and $\text{Var}(\epsilon)$. Random effects are modeled

Table 2. Parameters for quantitative mitochondrial morphology measurements.

Feature	Definition
<i>Cellular parameters</i>	
Area	Total number of pixels occupied by the cell
Mean Intensity	Cellular mean intensity on cell channel
Max Intensity	Cellular max intensity on cell channel
Perimeter	Perimeter length in pixels
Compaction	Minor Axis Diameter/Major axis diameter on cell ellipse
Roundness	$\sqrt{4 \times \text{Area}/\pi} / (\text{Perimeter}/4 \times \pi)$
<i>Mitochondrial cluster parameters</i>	
Fractal8	Fractal dimension for a 8 × 8 pixels square
Fractal32	Fractal dimension for a 32 × 32 pixels square
Fractal64	Fractal dimension for a 64 × 64 pixels square
Count	Number of mitochondria cluster
Area	Mean of mitochondria cluster area
Elongation	Major Axis/Minor Axis Diameter on mitochondria cluster ellipse
Compaction	Minor Axis/Major Axis Diameter on mitochondria cluster ellipse
Roundness	Mean of $\sqrt{4 \times \text{Area}/\pi} / (\text{Perimeter}/4 \times \pi)$
Euler number	Mean of Euler Number of each mitochondrial cluster
Mito Mean Intensity	Mean intensity of mitochondrial cluster
Mito Max Intensity	Mean of Max intensity of mitochondrial cluster
Perimeter	Mean perimeter of mitochondrial cluster
Solidity	Perimeter of the convex hull/Perimeter of the object
<i>Mitochondrial skeletonization parameters</i>	
Width	Mitochondria width compared to skeleton
Length	Total skeleton length
Branch Points	Number of skeleton branching points
Ending Points	Number of skeleton ending points
Branch Points Ratio	Branching points/(Branching points + ending points)
<i>Isolated mitochondria</i>	
Compaction	Minor Axis/Major Axis Diameter of isolated mitochondria
Elongation	Major Axis/Minor Axis Diameter of isolated mitochondria
Roundness	$\sqrt{4 \times \text{Area}/\pi} / (\text{Perimeter}/4 \times \pi)$ of isolated mitochondria
Length	Mitochondrial length
<i>Mitochondrial location</i>	
Distance To Membrane	Distance between mitochondria and cell membrane
Distance To Nuclei	Distance between mitochondria and nuclear envelope
Distance Ratio	$\text{DistToNuclei}/(\text{DistToCellMembrane} + \text{DistToNuclei})$

independently for each participant with a diagonal covariance structure assumed for the residuals. The linear mixed-model equation is solved by restricted maximum likelihood estimation with 100 maximum interaction, 5 maximum step-halvings, log-likelihood convergence of 0, parameter convergence of 0.000001, hessian convergence of 0 and singularity tolerance of 0.0000000001. In general, although not specifically reported

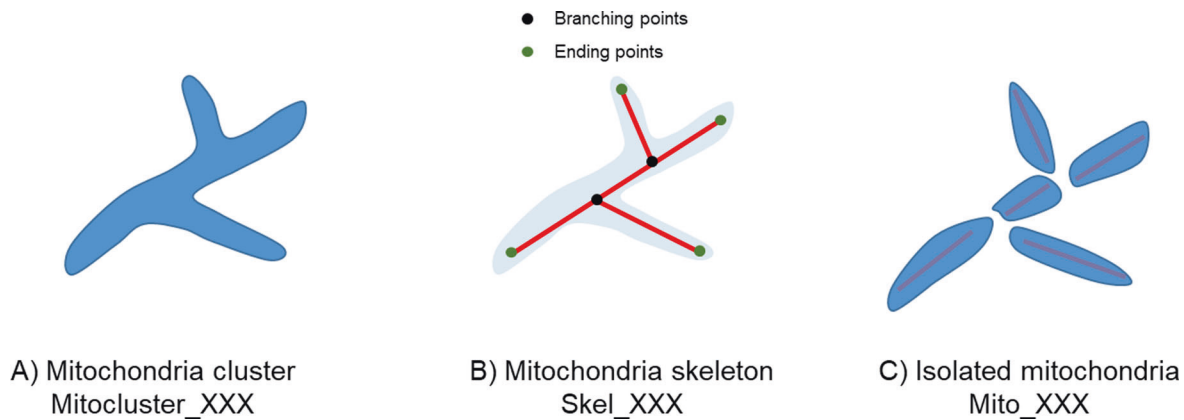


Fig. 1 Process for obtaining mitochondrial morphology parameters. MITOTOUCH® proprietary software identifies mitochondrial clusters, skeletonizes the clusters and divides them into individual mitochondria to derive both cluster and isolated mitochondrial metrics at the single cell level.

for each model, the participant level random effects parameter of the y matrix was significant at the $p \leq 0.01$ level as assessed by the Wald Z statistic.

For the regression examining relationship between mitochondrial morphological measurements and mitochondrial enzyme activity, the proportion of variance accounted for by the regression was determined by calculating the R^2 using the equation below where n is the number of data points, y is the dependent variable and \hat{y} is the predicted value of the dependent variable. The R^2 is represented as a percent and the r value is also calculated to provide an index of the effect size of the relationship. r values are a standardized measures of relationship strength with the following conventions: r of 0.1–0.3 is a small effect, r of 0.3–0.5 is a medium effect and $r \geq 0.50$ is a large effect [67].

$$R^2 = 1 - \frac{\sum_{k=1}^n (y_i - \hat{y}_i)^2}{\sum_{k=1}^n (y_i - \bar{y}_i)^2}$$

To determine the relationship between mitochondrial morphological measurements and mitochondrial enzyme activity, ETC complex activities were considered independent variables. Only parameters with $p < 0.001$ were retained to account for multiple comparisons. Specifically, with 31 morphological measurements, Bonferroni correction suggests a p of 0.0016 (0.05/31). As described in the results, because of findings within the first analysis (Model 1), a transformed variable of ETC Complex IV minus ETC Complex I/III activity was created, and the models were rerun (Model 2).

Linear mixed-models were also used to examine the difference in mitochondrial morphology parameters between ASD vs Control groups. Since we found distinct variation in mitochondrial morphology depending on the relative elevation in ETC Complex IV activity as compared to ETC Complex I+III activity, we divided the ASD fibroblasts into two groups based on this difference in ETC complex activity to determine if the mitochondrial morphology of either group was similar to the mitochondrial morphology of the control fibroblasts. Comparison of the two ASD subgroups and controls were conducted for each morphology parameter. For analyses that demonstrated an overall significant group effect, the two ASD subgroups were compared to the control using planned post-hoc contrasts. An overall significant difference with Bonferroni correction of $p = 0.0008$ (0.05/(31*2)) was used. For two-tailed t -test with $\alpha = 0.0008$, given the large number of observations, the difference between groups achieves a power of at least 95% down to a small effect size of Cohen's $d = 0.1$. To provide an index of the magnitude of the difference between the two ASD group, the effect size as represented by Cohen's d was calculated and interpreted as follows: 0.2 small effect, 0.5 medium effect and 0.8 large effect.

To investigate the relationship between mitochondrial morphology and ASD symptoms, two mitochondrial morphology measurements which differentiated the two ASD subgroups with different mitochondrial function the most, as based on the effect size, were selected. These morphology measurements were correlated with subscales of the ABC and SRS, two widely used measurements of ASD symptoms. Further, to determine whether the two ASD subgroups demonstrated distinct behavior, ABC and SRS scales were entered into a Fisher Discriminant

Analysis to assess if a linear discriminant function could separate the two ASD subgroups.

RESULTS

In this study, mitochondrial enzyme activities from ASD fibroblasts are first compared to laboratory normative values. Next, an analysis of the relationship between ASD fibroblasts mitochondrial morphological measurements and mitochondrial complex activity is presented. Fibroblasts from individuals with ASD are then divided into two groups based on their mitochondrial enzyme activity, and the mitochondrial morphological measurements between these two groups are compared to the morphological measurements from the control fibroblasts. Lastly, the relationship between ASD behavior and selected morphological measurements and the two ASD groups is investigated.

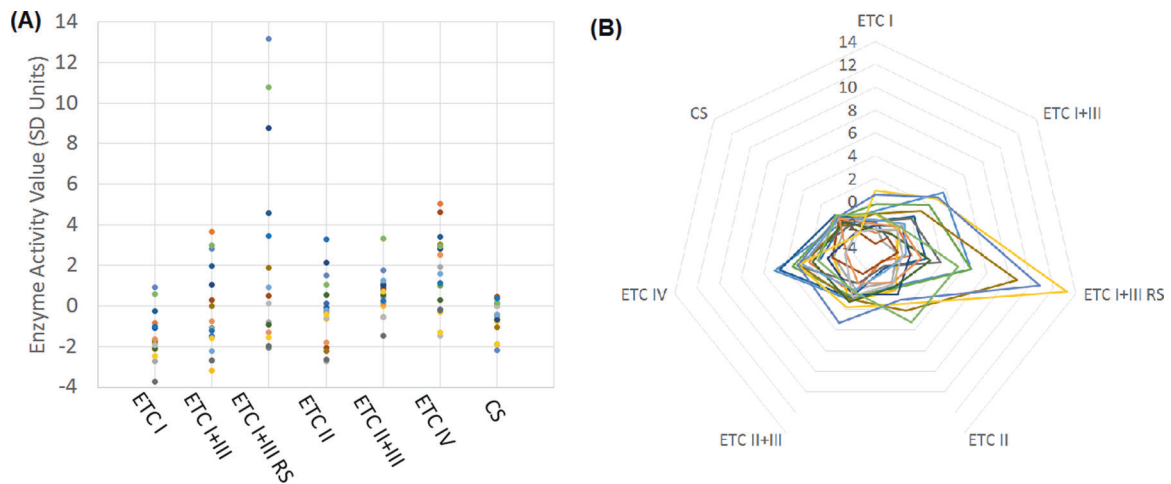
ETC complex activity in ASD fibroblasts

Table 3 outlines the laboratory normative mean and SD for fibroblast mitochondrial enzyme activities, along with the mean and SD for the fibroblasts obtained from the ASD participants. To examine the ASD participant values relative to the normative control values and to equalize the activity scales between the different enzymes, enzyme activity was standardized to the normative control values [i.e., Standardized Value = (ASD Value – Normative Mean)/Normative SD]. Figure 2 provides standardized enzyme activity values in graphical form. Table 4 outlines the standardized mitochondrial enzyme activity mean, SD and skewness.

ETC Complex I demonstrated a low mean with a relatively normal SD and skewness suggesting that the distribution was depressed across the group of ASD individuals, consistent with Fig. 2A which demonstrates a downward shift in the distribution. ETC Complex I+III demonstrated a relatively normal mean and skewness with an increased SD, suggesting increased variability, consistent with Fig. 2A. ETC Complex I+III RS demonstrated an increased SD with positive skewness indicating unique cases with elevated activity, producing a long distribution tail. In other words, the ASD participants as a group did not have an overall average increase in ETC Complex I+III RS activity but rather there were a few unique individuals, perhaps a subgroup, that represented elevated activity in this mitochondrial enzyme, consistent with Fig. 2A, B. Complex II demonstrated a relatively normal mean, SD and skewness. Complex IV demonstrated an elevated mean with a relatively normal SD and skewness suggesting that the distribution was increased across the group of ASD individuals equally, consistent with Fig. 2A.

Table 3. Electron transport chain complex activity in Fibroblasts for clinical normative reference range and for fibroblasts derived from children with autism spectrum disorder.

Enzyme (nmoles/min/mg protein)	Normative		ASD Participants	
	Mean	Standard deviation	Mean	Standard deviation
ETC Complex I	1026	196	730.74	224.36
ETC Complex I+III	190	25.0	180.71	51.90
ETC Complex I+III RS	56.5	15.0	86.73	70.38
ETC Complex II	6.98	0.98	6.33	2.25
ETC Complex II+III	4.00	0.90	4.32	1.41
ETC Complex IV	17.1	4.10	23.91	7.86
Citrate Synthase	67.8	14.1	61.47	11.58

**Fig. 2** Electronic transport chain activity of autism spectrum disorder fibroblast cell lines. Standardized mitochondrial enzyme activity from 18 ASD fibroblasts represented in (A) linear graph and (B) radar plot. Green box represents normative range (± 1.96 SD). ETC = Electron transport chain; CS = Citrate Synthase.**Table 4.** Electron transport chain complex activity (normalized) in fibroblasts derived from children with autism spectrum disorder.

Enzyme	Mean	Standard deviation	Skewness	Below normal	Above normal
ETC Complex I	-1.51	1.45	0.45	33% (6/18)****	0% (0/18)
ETC Complex I+III	-0.37	2.08	0.62	22% (4/18)**	17% (3/18)
ETC Complex I+III RS	2.02	4.69	1.18	11% (2/18)	33% (6/18)****
ETC Complex II	-0.29	1.68	0.34	22% (4/17)**	11% (2/17)
ETC Complex II+III	0.63	1.05	0.49	0% (0/17)	6% (1/17)
ETC Complex IV	1.66	1.92	0.00	0% (0/17)	44% (8/18)****
Citrate Synthase	-0.44	0.82	-0.90	6% (1/17)	0% (0/17)

Values in bold, underline and italic are outside the normal range. Since these are normalized values, they are in standard deviation units.

** $p < 0.001$; *** $p < 0.0001$; **** $p < 0.00001$; ***** $p < 0.000001$.

Table 4 outlines the number of cases outside the normative range as well as the significance of this number as calculated using a Binomial distribution. Three ETC Complexes had more cases below the normal range than would be expected by chance. ETC Complex I demonstrated below normal activity in 33% of the ASD participants while ETC Complex I+III and II demonstrated below normal activity in 22% of the ASD participants. Two ETC Complex demonstrated more cases above the normal range than would be expected by chance. ETC Complex I+III RS demonstrated above normal activity in 33% of the ASD participants while ETC Complex IV demonstrated above normal activity in 44% of the ASD participants.

Relationship between mitochondrial morphology and ETC complex activity

A mixed-model regression was used to determine the relationship between mitochondrial enzyme activity and mitochondrial morphology. Parameters for enzymes found to be non-significant (cutoff $p < 0.001$) were eliminated from the model. Two models were analyzed. Model 1 included all mitochondrial enzyme variables. Model 2 added the transformed variable of Complex IV activity minus Complex I+III activity because of findings from the first model. F statistics for each significant mitochondrial enzyme activity parameter is provided in Supplementary Table 1 while parameter values are provided in Table 5.

Table 5. Coefficients for two mixed-models [Mean (Standard Error)] examining the association between electron transport chain (ETC) complex activity and morphology in fibroblasts derived from children with autism spectrum disorder. R^2 and r values for model 2 are also depicted to provide a representation of the effect size of the regression.

Morphological measurement	Model 1		Model 2	
	Complex I+III	Complex IV	Complex IV minus I/III Parameter value	R^2/r
Cellular parameters				
Area	<i>-58,300 (5628)</i>	<i>60,553 (5080)</i>	<i>59,357 (1987)</i>	<i>33.7%/0.58</i>
Max Intensity	<i>-490.2 (61.0)</i>	<i>439.1 (54.7)</i>	<i>462 (18.2)</i>	<i>31.2%/0.56</i>
Perimeter	<i>-951.5 (88.2)</i>	<i>966.8 (79.6)</i>	<i>957 (31.2)</i>	<i>27.8%/0.53</i>
Compaction	<i>0.064 (0.006)</i>	<i>-0.059 (0.006)</i>	<i>-0.0611 (0.003)</i>	<i>12.4%/0.35</i>
Roundness	<i>0.023 (0.002)</i>	<i>-0.021 (0.002)</i>	<i>-0.022 (0.001)</i>	<i>20.4%/0.45</i>
Mitochondrial cluster parameters				
Fractal 8	<i>-0.106 (0.013)</i>	<i>0.094 (0.012)</i>	<i>0.099 (0.005)</i>	<i>29.6%/0.54</i>
Fractal 32	<i>-0.218 (0.027)</i>	<i>0.197 (0.024)</i>	<i>0.206 (0.011)</i>	<i>32.0%/0.56</i>
Fractal 64	<i>-0.210 (0.090)</i>	<i>0.193 (0.023)</i>	<i>0.200 (0.010)</i>	<i>34.8%/0.59</i>
Count	<i>-19.41 (2.43)</i>	<i>21.04 (2.24)</i>	<i>20.2 (1.2)</i>	<i>21.0%/0.46</i>
Area	<i>-6.50 (1.17)</i>	<i>5.42 (1.07)</i>	<i>5.91 (0.5)</i>	<i>44.9%/0.67</i>
Compaction	<i>0.012 (0.002)</i>	<i>-0.011 (0.001)</i>	<i>-0.012 (0.001)</i>	<i>26.5%/0.51</i>
Elongation	<i>-0.126 (0.014)</i>	<i>0.120 (0.013)</i>	<i>0.122 (0.008)</i>	<i>32.3%/0.57</i>
Roundness	<i>0.0027 (0.0004)</i>	<i>-0.0022 (0.0004)</i>	<i>-0.0024 (0.0002)</i>	<i>34.0%/0.58</i>
Mito Mean Intensity	<i>854 (29.8)</i>		<i>13.04 (3.84)</i>	<i>30.8%/0.56</i>
Mito Max Intensity	<i>-76.1 (11.1)</i>		<i>40.00 (5.62)</i>	<i>30.1%/0.55</i>
Perimeter	<i>-2.38 (0.47)</i>	<i>1.89 (0.43)</i>	<i>2.11 (0.20)</i>	<i>45.0%/0.67</i>
Solidity	<i>0.0034 (0.0010)</i>		<i>-0.019 (0.0005)</i>	<i>36.8%/0.61</i>
Mitochondrial skeletonization parameters				
Skeletal Width	<i>-0.047 (0.007)</i>	<i>0.048 (0.007)</i>	<i>0.048 (0.003)</i>	<i>45.8%/0.68</i>
Skeletal Length	<i>-478 (57)</i>	<i>484 (53)</i>	<i>-1083 (176)</i>	<i>18.2%/0.43</i>
Branch Points	<i>-24.0 (3.26)</i>	<i>25.0 (3.12)</i>	<i>24.3 (1.76)</i>	<i>18.7%/0.43</i>
Ending Points	<i>-61.76 (7.95)</i>	<i>66.08 (7.34)</i>	<i>63.6 (3.97)</i>	<i>20.0%/0.45</i>
Isolated mitochondria				
Compaction	<i>0.007 (0.002)</i>	<i>-0.006 (0.001)</i>	<i>-0.0067 (0.0009)</i>	<i>23.5%/0.48</i>
Elongation	<i>-0.181 (0.022)</i>	<i>0.170 (0.020)</i>	<i>0.174 (0.0105)</i>	<i>37.5%/0.61</i>
Roundness	<i>0.0055 (0.0009)</i>	<i>-0.0047 (0.0009)</i>	<i>-0.0050 (0.0005)</i>	<i>19.3%/0.44</i>
Length	<i>-0.414 (0.051)</i>	<i>0.382 (0.047)</i>	<i>0.395 (0.025)</i>	<i>37.1%/0.61</i>
Mitochondrial location				
Cell Membrane	<i>-6.11 (1.13)</i>	<i>6.44 (1.02)</i>	<i>6.26 (0.41)</i>	<i>51.1%/0.72</i>
Nucleus	<i>-17.17 (1.71)</i>	<i>17.48 (2.48)</i>	<i>19.5 (0.98)</i>	<i>30.2%/0.55</i>

Model 1 examined individuals ETC complex activity while Model 2 examined a transformed variable which represents the difference between ETC complex I/III and IV. All coefficients were significant $p < 0.0001$. The morphological measurements with large effect sizes are bold, italic and underlined for emphasis.

R^2 was rather consistent for morphological measures across both models (Supplementary Table 1) with the percent variance accounted for varying from 12.4% to 51.1% with an average across all models of 30.5%. Corresponding r values varied, ranging from 0.35 (medium effect) to 0.72 (large effect) with an average of 0.55 (large effect). R^2 and r values for Model 2 are provided in Table 5. Morphological measurements with large effect sizes are bold, italic and underlined.

For Model 1, the majority of the morphological measurements were found to be significantly associated with ETC Complex I+III and Complex IV activity with the relationships between morphology and mitochondrial enzyme activity opposite for these two ETC complexes. For example, higher ETC Complex I+III activity was associated with a smaller cellular area, maximum intensity and perimeter and a higher cellular mean intensity, compaction and roundness, whereas a higher ETC Complex IV activity was

associated with a larger cellular area, maximum intensity and perimeter and a lower cellular mean intensity, compaction and roundness. Thus, the analyses using Model 1 suggested that, in general, activity of ETC Complex I+III and ETC Complex IV had an opposite association with cellular and mitochondrial morphology. Thus, a transformed variable which represented that activity in ETC Complex IV relative to ETC Complex I+III was created to determine if morphology was driven by the activity difference. Analysis using Model 2 demonstrated that the transformed variable was highly significant and accounted for the variance of ETC Complex IV and ETC Complex I+III activity parameters (See Table 5). Examples of the relationships between enzyme activity and mitochondrial morphology are shown in Fig. 3. Parameters from each parameter group with the largest effect sizes were chosen for display.

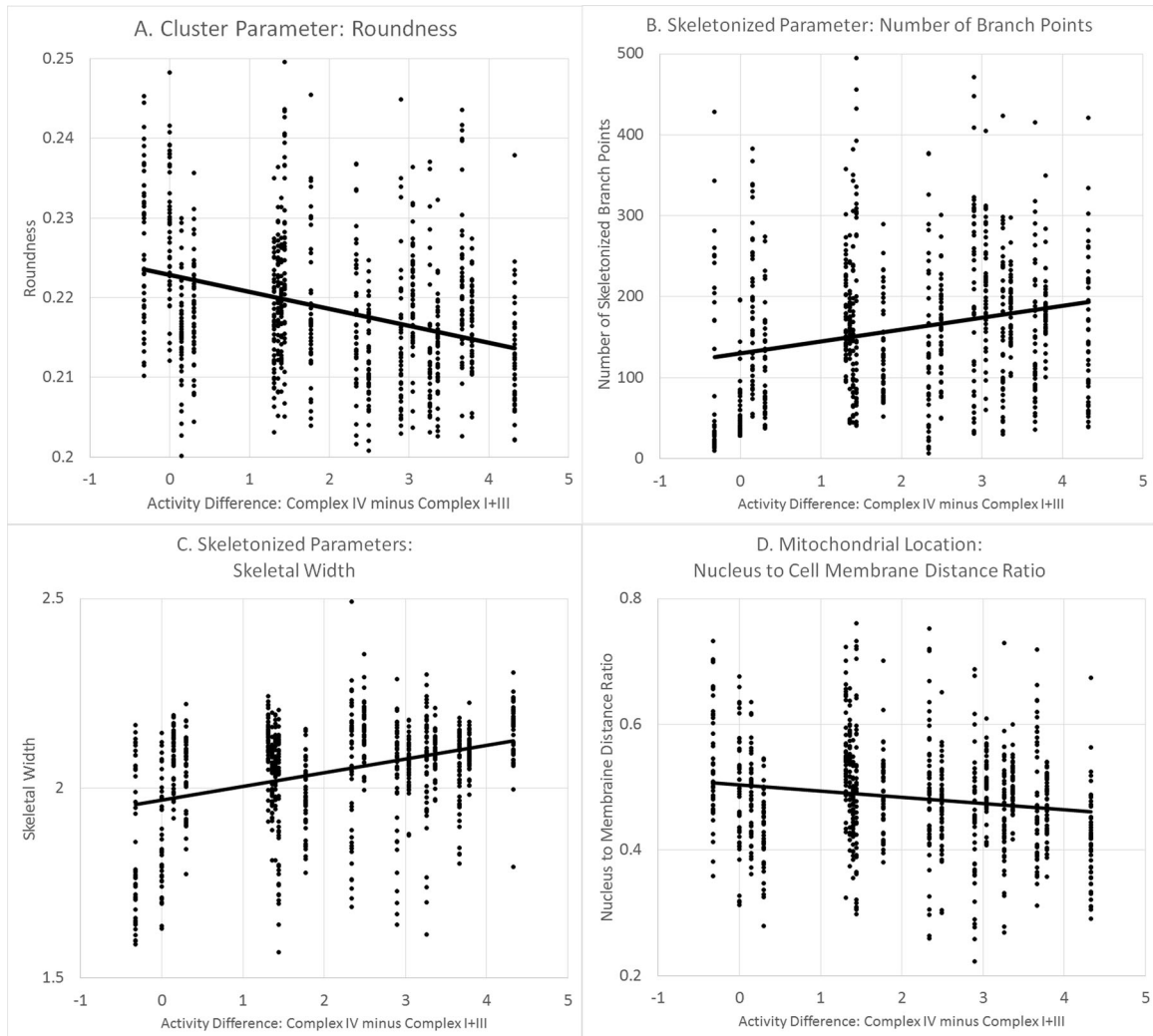


Fig. 3 Relationship between mitochondrial respiration and morphology in autism spectrum disorder fibroblast cell line. Examples of the relationship between mitochondrial morphological parameters and mitochondrial ETC complex activity for fibroblasts derived from children with ASD. Individual morphological measurements from each cell examined are depicted.

Mitochondrial morphological measurements compared to controls

The above analysis suggests that the ASD fibroblasts have variation in cellular and mitochondrial morphology associated with ETC complex activity. To understand which of these variations was more like controls, ASD participants were split into two subgroups, a subgroup with relatively equal ETC Complex IV and I+III activities and a subgroup with higher activity in Complex IV relative to Complex I+III. An analysis of the subgroup values relative to controls was conducted (Table 6).

As seen in Table 6, except for the Cluster parameter Maximum Intensity, the morphological measurements from the control fibroblasts were closer to fibroblasts with greater ETC Complex IV activity relative to Complex I+III activity as demonstrated by the bold and italic mean. In fact, the mean difference between the controls and the fibroblasts with greater ETC Complex IV activity relative to Complex I+III activity is 2 to 10 times smaller as compared to the mean difference between the controls and the fibroblasts with relatively equal ETC Complex IV and I+III activities. Furthermore, the difference between the controls and the fibroblasts with relatively equal ETC Complex IV and I+III activities was statistically significant for all the morphological measurements. In contrast, the differences in the morphological measurements between controls and the fibroblasts with greater ETC Complex IV activity relative to Complex I

+III activity was not significant for Cellular Maximum Intensity and Cellular Roundness, Mitochondrial Cluster measurements Fractal 8, Fractal 32, Fractal 64, and Compaction and Mitochondrial Location parameters representing distance from Cell Membrane, Distance from Nucleus and Distance Ratio. Given the excellent power of the analysis, these non-significant mitochondrial morphology differences between the controls and the ASD subgroup with relatively high ETC Complex IV activity can be considered equivalent.

Figure 4 depict images of mitochondria in fibroblasts with relatively higher ETC Complex IV activity (top panels), relatively similar ETC Complex I+III and IV activities (middle panels) and control fibroblasts (bottom panels), respectively. As can be seen, fibroblasts with relatively elevated ETC Complex IV activity share more resemblance to control fibroblasts in their mitochondrial (network) morphology than fibroblasts with relatively equal ETC Complex IV and I+III activities.

Table 7 outlines the morphological parameters that have higher values in the mitochondria with relatively equal ETC Complex I+III and IV activities and those with relatively elevated ETC Complex IV activity. Fibroblasts with mitochondria exhibiting increased ETC Complex IV activity tend to be larger (having greater area and perimeter with a higher mean staining intensity) and display more clusters of reticulated mitochondria (with more branch points). In contrast, fibroblasts with mitochondria with similar ETC Complex I

Table 6. Means (SE = Standard Error) of morphological measurements for three groups, control fibroblasts, ASD fibroblasts with elevated Complex IV activity relative to Complex I+III and ASD fibroblasts with relatively equal Complex IV and I+III activities.

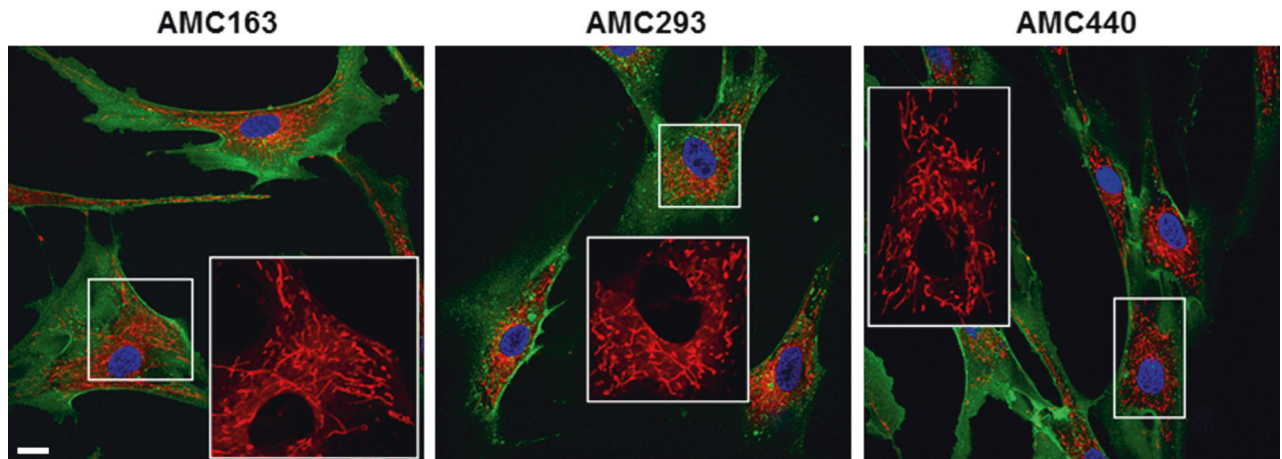
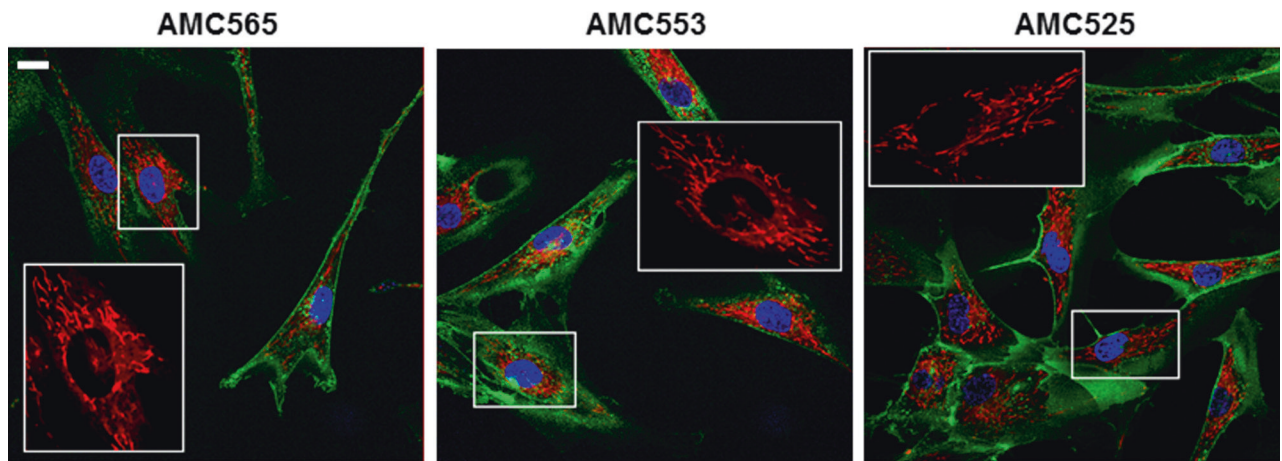
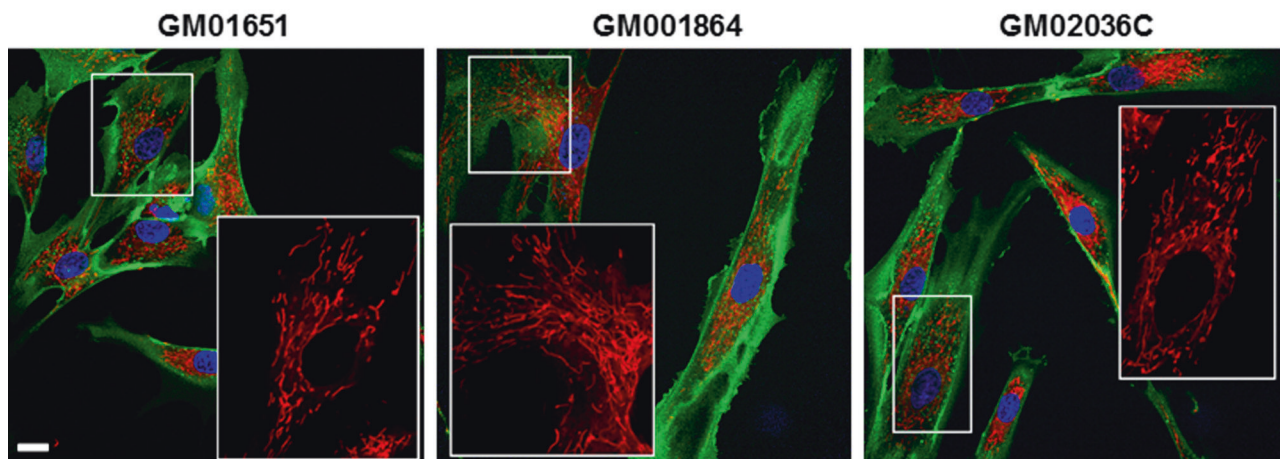
Morphological Measurement	Control	Elevated Complex IV			Equal Complex I+III and IV			ASD Group Difference
	Mean (SE)	Mean (SE)	Diff	% Diff	Mean (SE)	Diff	% Diff	Cohen <i>d</i> '
Cellular Parameters								
Area	85,925 (1,756)	103,253 (1,346)	17327‡	20%	58,572 (797)	-27,353‡	-32%	0.44
Mean Intensity	272 (2.24)	316 (1.72)	44.20‡	16%	360 (1.02)	87.60‡	32%	-0.45
Max Intensity	1591 (17.17)	1532 (13.17)	-58.44	-4%	1327 (7.80)	-263.82‡	-17%	0.15
Perimeter	1775 (27.11)	1911 (20.79)	135‡	8%	1279 (12.31)	-496.13‡	-28%	0.43
Compaction	0.633 (0.003)	0.616 (0.002)	-0.018‡	-3%	0.666 (0.001)	0.033‡	5%	-0.40
Roundness	0.179 (0.001)	0.178 (0.001)	-0.001	-1%	0.192 (0.000)	0.014‡	8%	-0.39
Mitochondrial Cluster Parameters								
Fractal 8	1.538 (0.005)	1.528 (0.004)	-0.011	-1%	1.439 (0.002)	-0.099‡	-6%	0.37
Fractal 32	0.929 (0.011)	0.928 (0.008)	-0.001	0%	0.730 (0.005)	-0.199‡	-21%	0.37
Fractal 64	0.744 (0.010)	0.730 (0.008)	-0.014	-2%	0.545 (0.004)	-0.198‡	-27%	0.37
Count	51.56 (0.963)	60.23 (0.738)	8.665‡	17%	40.91 (0.437)	-10.659‡	-21%	0.22
Area	106.38 (0.563)	96.84 (0.432)	-9.542‡	-9%	72.99 (0.256)	-33.394‡	-31%	0.60
Compaction	0.460 (0.001)	0.462 (0.001)	0.002	0%	0.489 (0.000)	0.029‡	6%	-0.55
Elongation	3.005 (0.008)	2.930 (0.006)	-0.075‡	-2%	2.672 (0.004)	-0.333‡	-11%	0.59
Roundness	0.216 (0.000)	0.219 (0.000)	0.002‡	1%	0.228 (0.000)	0.012‡	6%	-0.60
Euler Number	0.979 (0.000)	0.983 (0.000)	0.004‡	0%	0.991 (0.000)	0.012‡	1%	-0.33
Mean Intensity	856.1 (4.32)	831.5 (3.31)	-24.6‡	-3%	883.0 (1.96)	26.9‡	3%	-0.34
Max Intensity	1220 (6.32)	1148 (4.85)	-73.28‡	-6%	1182 (2.87)	-38.98‡	-3%	-0.21
Perimeter	51.01 (0.23)	47.28 (0.18)	-3.73‡	-7%	37.79 (0.10)	-13.23‡	-26%	0.61
Solidity	0.828 (0.001)	0.832 (0.000)	0.004‡	0%	0.854 (0.000)	0.027‡	3%	-0.54
Mitochondrial Skeletonization Parameters								
Skeletal Width	2.048 (0.004)	1.986 (0.003)	-0.061‡	-3%	1.855 (0.002)	-0.193‡	-9%	0.50
Skeletal Length	1402 (24.98)	1564 (19.15)	162.1‡	12%	947 (11.34)	-454.9‡	-32%	0.32
Branch Points	79.64 (1.40)	88.33 (1.07)	8.70‡	11%	55.75 (0.63)	-23.89‡	-30%	0.22
Ending Points	177.20 (3.22)	203.18 (2.47)	25.99‡	15%	134.4 (3.97)	-42.83‡	-24%	0.22
Branch Ratio	0.298 (0.001)	0.287 (0.001)	-0.011‡	-4%	0.266 (0.000)	-0.032‡	-11%	0.38
Isolated Mitochondria								
Compaction	0.443 (0.001)	0.450 (0.001)	0.008‡	2%	0.468 (0.000)	0.025‡	6%	-0.39
Elongation	4.329 (0.012)	4.195 (0.009)	-0.134‡	-3%	3.868 (0.006)	-0.461‡	-11%	0.56
Roundness	0.255 (0.001)	0.258 (0.000)	0.003‡	1%	0.266 (0.000)	0.011‡	4%	-0.37
Length	7.212 (0.029)	6.938 (0.022)	-0.274‡	-4%	6.107 (0.013)	-1.105‡	-15%	0.58
Mitochondrial Location								
Cell Membrane	37.81 (0.495)	36.61 (0.379)	-1.19	-3%	24.11 (0.225)	-13.697‡	-36%	0.35
Nucleus	102.03 (1.02)	102.30 (0.782)	0.264	0%	74.96 (0.463)	-27.08‡	-27%	0.47
Distance Ratio	0.485 (0.002)	0.481 (0.002)	-0.004	-1%	0.519 (0.001)	0.034‡	7%	-0.29

The mean and percent difference between the ASD subgroups and control group is provided. The subgroup mean that is closer to the control values has bold and italic values.

‡*p* < 0.0008 which is the threshold based on Bonferroni correction. The difference between the ASD groups is also represented by the Cohen *d*' effect size with medium effect sizes in bold and italic. Color code: mean is statistically significantly higher than control (dark green); mean is higher than control but did not reach statistical significance (light green); mean is statistically significantly lower than control (red); mean is lower than control but did not reach statistical significance (orange).

+III and IV activities have more compact and rounder cellular and mitochondrial morphology with mitochondrial clusters having less complex geometry and more uniform distribution within cells. Results from the morphological measurements were roughly consistent with the confocal microscopy data (Fig. 4), demonstrating the usefulness of objective quantitative evaluation of morphological parameters for image interpretation. Last, we used radar graphs (Fig. 5) to synthesize (in the form of 'phenotypic

signatures') the multivariate data from three representative samples (bottom panel), paired with their respective segmented images (top panels). This visual display further underscores the fact that fibroblasts with relatively increased Complex IV activity have a mitochondrial morphology more similar to that of control fibroblasts whereas those with relatively equal ETC Complex I+III and IV activities tend to differ from controls in most of their morphological parameter values.

(A) ASD Fibroblasts with Relatively High Complex IV Activity**(B) ASD Fibroblasts with Relatively Equal Complex I+III and IV Activity****(C) Control Fibroblasts****Association of mitochondrial morphological measurements with ASD symptoms**

To investigate the relationship between mitochondrial morphology and ASD symptoms, the mitochondrial cluster perimeter was selected as it had the largest effect size and was higher for the

ASD subgroup with relatively greater Complex IV activity and mitochondrial cluster roundness was selected since it had the second highest effect size and was higher for the ASD subgroup with relative equal Complex I+III and Complex IV activity. As seen in Fig. 6, higher mitochondrial cluster roundness was significantly

Fig. 4 Images of mitochondrial morphology in fibroblast cell lines. Fibroblasts from patients with (A, B) autism spectrum disorder or from (C) control individuals. Mitochondria are highlighted in red, the cell membrane in green and nuclei in blue. **A** Top panels: fibroblasts from three ASD patients with relatively increased Electron Transport Chain Complex IV activity. **B** Middle Panels: fibroblasts from three individuals with autism spectrum disorder with roughly similar Electron Transport Chain Complex I+III RS and Complex IV activity. **C** Bottom Panels: fibroblasts from three control individuals. Scale bar: 15 μ m. In each case, the inset is a $\times 2$ magnification of a region-of-interest (indicated by a white box) showing the mitochondrial compartment. Consistent with the morphological measurements, mitochondria present in cells from ASD patients with relatively increased Electron Transport Chain Complex IV activity are found in larger cells and tend to be more abundant, more clustered and more branched. In contrast, mitochondria present in cells from ASD patients with relatively similar Electron Transport Chain Complex I+III RS and Complex IV activity tend to form more compact clusters of less complex geometry and appear to be more uniformly distributed throughout smaller cells.

Table 7. Morphological parameters from Table 6 which have higher values organized by ETC complex IV activity.

Higher for mitochondria with elevated ETC complex IV activity		Higher for mitochondria with similar ETC complex IV and I+III activity	
Cellular	Skeletonization	Cellular	
Area	Width and Length	Mean Intensity	
Max Intensity	Branch Points	Compaction	<u>Isolated</u>
Perimeter	Ending Points	Roundness	Compaction
Cluster	<u>Isolated</u>	Cluster	Roundness
Fractal 8,32,64	Elongation	Compaction	<u>Location</u>
Count, Area	Length	Roundness	Distance Ratio
Elongation	<u>Location</u>	Solidity	
Perimeter	Cell Membrane	Mean & Max Intensity	
	Nucleus	Euler Number	

Parameters which demonstrate at least medium effect sizes (as calculated by Cohen d') are displayed in bold and italic.

associated with more severe deficits in Social Withdrawal [$F(1,15.3) = 8.50, p = 0.01; R^2 32\%, r = 0.57$; Fig. 6B] and Stereotyped Movements [$F(1,15.1) = 8.86, R^2 32\%, r = 0.57; p < 0.01$; Fig. 6C]. As seen in Fig. 7, higher mitochondrial cluster perimeter was significantly associated with better Social Withdrawal [$F(1,15.0) = 6.33, p = 0.02; R^2 43\%, r = 0.66$; Fig. 7B] and Stereotyped Movement [$F(1,15.0) = 4.33, p = 0.05; R^2 43\%, r = 0.66$; Fig. 7C].

Given the relationship between mitochondrial function and morphology and the relationship outlined above between morphology and behavior, it would be expected that differences in behavior would correspond to the ASD mitochondrial function subgroups. Hence, Fisher Discriminant analysis was used to determine if symptoms could classify cases into the two groups. Fisher Discriminant analysis created a linear function which classified the cases with a 100% accuracy (Fig. 8A). Loadings indicated that more negative scores were driven by stereotypes and deficits in social communication while more positive scores were driven by impairments in social cognition, social motivation and social withdrawal.

DISCUSSION

This study examined the mitochondrial morphology of fibroblasts from individuals with ASD as well as mitochondrial enzyme activity, particularly activity of the ETC complexes. Mitochondrial features were examined using a computerized, automated method [65, 66] that objectively captured subtle differences in morphology and network connectivity from confocal fluorescence images. Both significant depression in ETC complex activity, particularly ETC Complex I activity, as well as elevation in ETC complex activity, particularly of Complex IV, was found; these changes are consistent with previous findings on mitochondrial ETC Complex activity in ASD, as discussed below. ETC Complex I+III and IV activities were both found to be significantly associated with variations in mitochondrial morphology albeit in opposite directions. Examining the difference between activities in these

two ETC complexes revealed that this difference was distributed over a continuum from no difference to ETC Complex IV having a higher activity than ETC Complex I+III. This variation in activity was associated with mitochondrial morphology. When comparing the two groups of ASD fibroblasts, the fibroblasts with ETC Complex IV activity greater than ETC Complex I+III activity were larger and contained more clusters of mitochondria which, on average, were more branched while fibroblasts with relatively similar ETC Complex I+III and Complex IV activity tended to be smaller cells and contained less reticulated and less complex mitochondria that were also smaller in size and more evenly distributed throughout the cell. ASD fibroblasts with a relatively higher ETC Complex IV activity relative to ETC Complex I+III activity were most like the control fibroblasts in their mitochondrial morphology. Mitochondrial morphology was also found to be related to ASD symptoms and behavior.

Abnormal mitochondrial function is one of the most prevalent metabolic disorders associated with ASD, although the type of mitochondrial abnormality seems to vary considerably from study to study. A meta-analysis found that the prevalence of classic mitochondrial disease in ASD is approximately 5% [24]. Consistent with the findings of this study, the meta-analysis found that ETC Complex I deficiency was the most common respiratory deficiency in those with classically defined mitochondrial disease [24]. Interestingly, this meta-analysis also found that genetic defects could explain the mitochondrial abnormalities in only about 25% of the cases, suggesting that the great majority of cases were not caused by simple known genetic defects [24].

In contrast to a 5% prevalence of classic mitochondrial disease, studies that have measured ETC activity in individuals with ASD have reported much higher prevalence of abnormal mitochondrial enzyme activity. Measurements of ETC Complex I, IV and Citrate Synthase activity from buccal samples found activity outside of the normal range in 62–65% of the ASD participants in two studies [44, 45] while two other studies measuring ETC activity in lymphocytes and granulocytes reported that 80% of the ASD

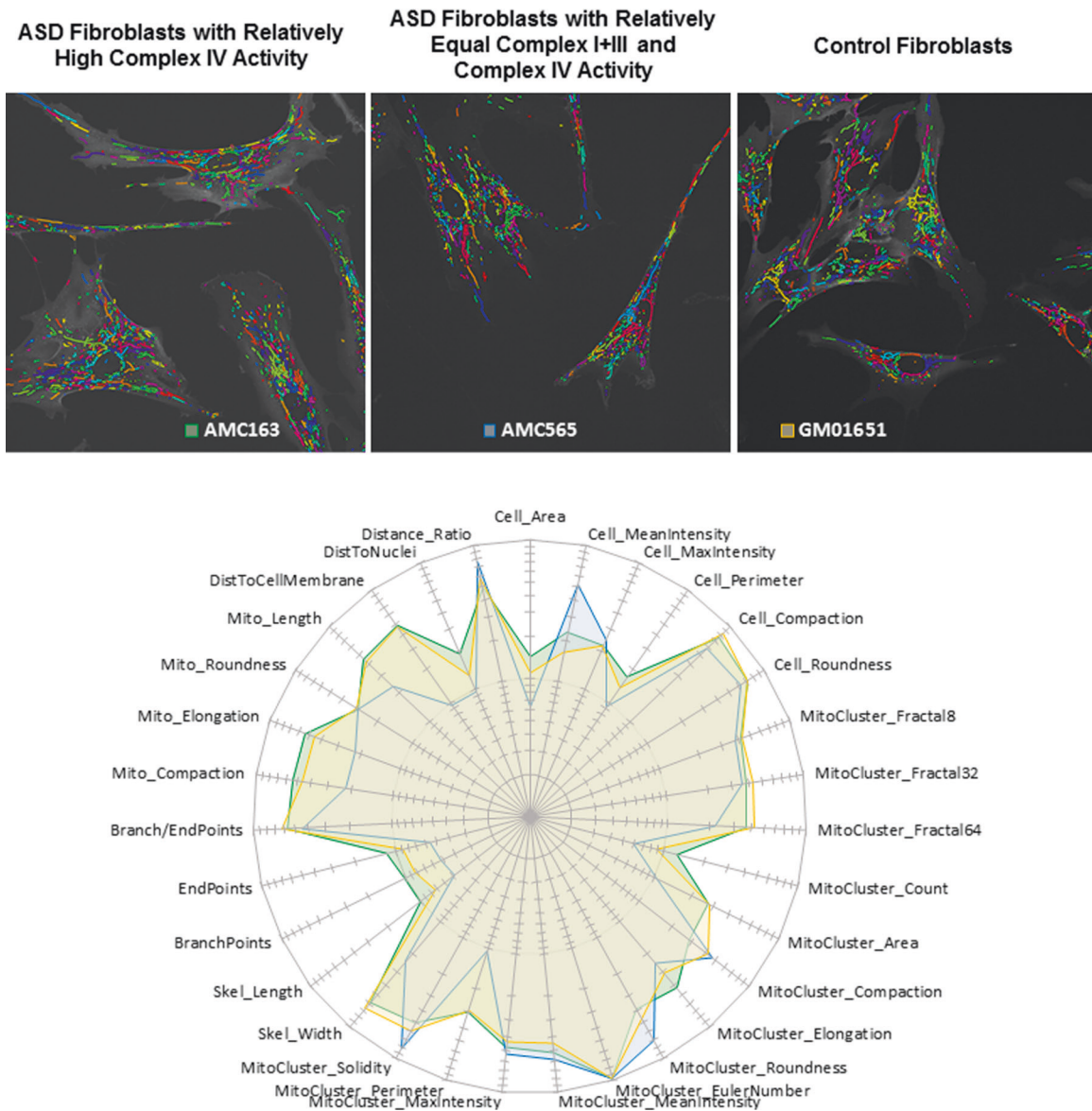


Fig. 5 Radar-chart distribution of normalized morphological features obtained for representative fibroblasts from patients with autism spectrum disorder or from control individuals. Three representative microscopic fields are shown that correspond to control fibroblasts (GM01651), ASD fibroblasts with elevated Complex IV activity relative to Complex I+III (AMC163) and ASD fibroblasts with relatively equal Complex IV and I+III activities (AMC565). The segmented images (top panels) were randomly colored for illustrative purposes. Parameter values V_p (expressed as arbitrary units) were obtained using the MITOTOUCH[®] software. Minimum value (V_{min}) and maximum value (V_{max}) were derived for each parameter based on the entire data set. Values V_p were normalized (to give V_n) by applying the following formula: $V_n = (V_p - V_{min}) / (V_{max} - V_{min})$ and V_n values were reported on the radar chart (bottom panel). Fibroblasts with relatively increased Complex IV activity (green line) have their morphological feature space more similar to that of control fibroblasts (orange) (for 29 parameters out of 31) whereas the morphological feature space of fibroblasts with relatively equal ETC Complex I+III and IV activities (blue) appear to be slightly distant.

samples had enzyme activity outside of the normal range [26, 27]. Supportive of a high prevalence of abnormal mitochondrial enzyme activity is the fact that biomarkers of mitochondrial dysfunction are also reported to be abnormal in 8–47% of individuals with ASD [24, 68].

The discrepancy between the prevalence of classic mitochondrial disease and physiological measurement of mitochondrial dysfunction can be explained by the findings of atypical (i.e., different from classical mitochondrial disease) mitochondrial dysfunction in individuals with ASD. Several variations of unique abnormalities in mitochondrial dysfunction have been reported. Abnormalities in fatty-acid oxidation metabolism have been associated with ASD in many studies [69]. One study reported

unique elevations in short and long chain acyl-carnitine in a subset of ASD patients in a large case series [25] with a follow-up study further estimating the prevalence of these abnormalities to be approximately 17% and further defining alterations in mitochondrial enzyme activity, most notably a depression in ETC Complex II activity in fibroblasts [33]. Thus, the depression in ETC Complex II activity in 22% of the patients as found in the current study is consistent with these previous observations.

Another type of mitochondrial dysfunction associated with ASD is manifested by increased activity of the mitochondrial respiratory chain, particularly an elevation in ETC Complex IV activity, also consistent with the findings of our study. The first report of significant elevation in ETC Complex IV activity was a case series of

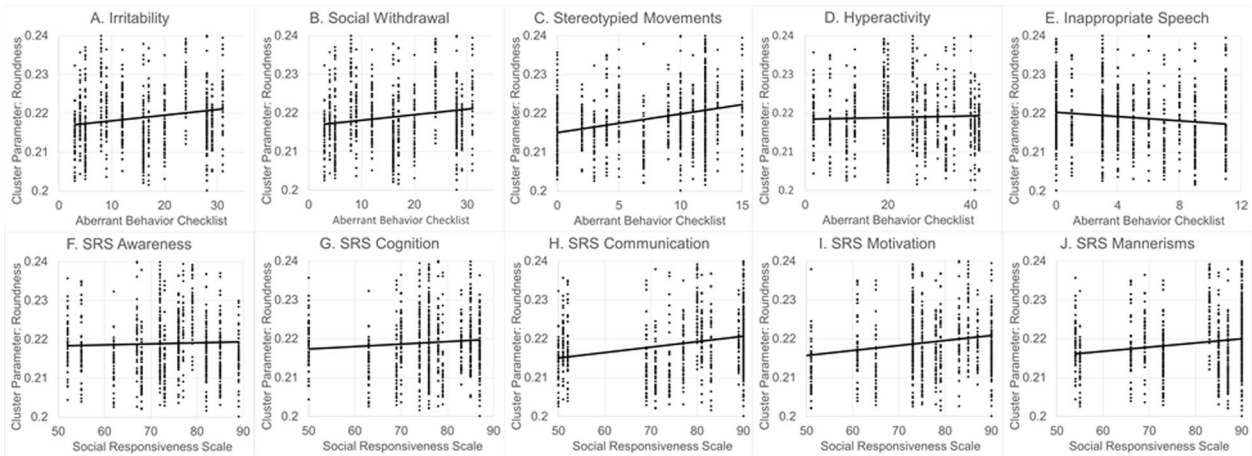


Fig. 6 The relationship between ASD symptoms and behaviors for mitochondrial cluster roundness. Both (B) social withdrawal and (C) stereotyped movements on the aberrant behavior checklist (ABC) were significantly worse with increased mitochondrial cluster roundness.

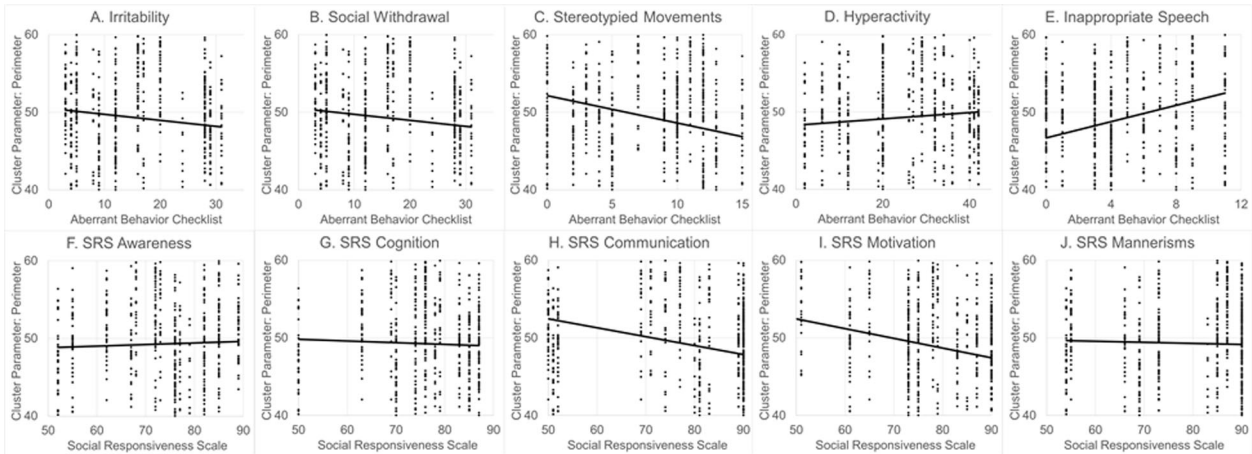


Fig. 7 The relationship between ASD symptoms and behaviors for mitochondrial cluster perimeter. Both (B) Social Withdrawal and (C) Stereotyped Movements on the Aberrant Behavior Checklist (ABC) were significantly better with higher mitochondrial cluster perimeter.

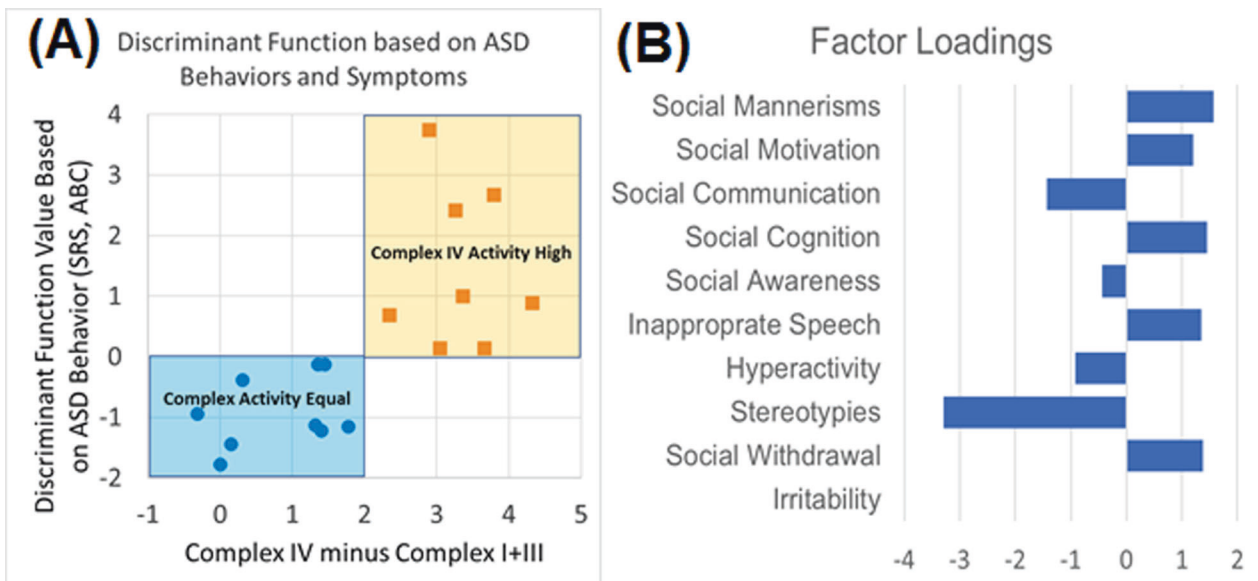


Fig. 8 The Discriminant Function developed from scales of ASD symptoms and behavior. **A** Function separates ASD individuals into the two mitochondrial activity subgroups. **B** Loadings (influence) of individual ASD symptom and behavior scales.

five ASD patients with muscle ETC Complex IV activity about 200% of normal [32]. Subsequently, associations of ASD with significantly high ETC Complex IV activity has been reported in buccal cells [44], LCLs [36] and fresh frozen post-mortem superior temporal gyrus [35]. Elevations in mitochondrial respiration, about 200% higher than control LCLs, has been shown to affect approximately 1/3 of ASD LCLs. These ASD LCLs can be divided into two subgroups depending on their mitochondrial respiratory rates: those with normal bioenergetics (AD-N) and those with atypical bioenergetics because of elevated respiratory rates (AD-A) [39]. This pattern of abnormal respiration in this subset of LCLs has been confirmed over eight studies [34, 37–43]. Interestingly, ASD LCLs with normal bioenergetics (i.e., AD-N LCLs) were found to upregulate genes associated with mitophagy including PINK1, MNF2, SIRT3, DNM1L, HIF1 α and PGC1 α . In contrast, ASD LCLs with elevated respiratory rates (i.e., AD-A LCLs) did not upregulate these genes involved in mitochondrial dynamics, repair and resistance to physiological stress [41]. As ETC Complex IV is the source of oxygen consumption in the ETC, the fact that mitochondrial morphology in the fibroblasts with relatively elevated Complex IV activity is similar to controls is consistent with this previous gene expression data demonstrating a more normal-like gene expression signature of the genes involved in mitochondrial morphology.

The finding that elevated ETC Complex IV activity relative to ETC Complex I+III rather than an absolute elevation in ETC Complex IV activity itself was related to maintaining normal mitochondrial morphology suggests that it is the uncoupling of the respiratory chain that is important to maintain normal mitochondrial morphology. This apparent uncoupling of the respiratory chain is consistent with other research on mitochondrial abnormalities associated with ASD. In fact, uncoupling of the respiratory chain by increasing proton leak through the inner membrane may be associated with the ASD phenotype [17]. An increase in proton leak respiration has been reported in ASD LCLs [68, 70]. An increase in Uncoupling Protein 2 gene expression [41, 43] and protein concentration [39] has been reported in ASD LCLs with elevated respiratory rates (i.e., AD-A LCLs). Adenine Nucleotide Translocator, which has a significant role in the regulation of inner mitochondrial membrane proton leak, shows increased expression when heteroplasmic levels of the mtDNA 3243A>G mutation is within the range associated with ASD [71] and a mutation in the ANT2 gene is associated with non-syndromic intellectual disability with ASD [72]. Lastly, the Fragile X syndrome mouse demonstrates proton leak through a dysfunctional ETC Complex IV and this increased leak has been shown to directly affect synaptic growth in this mouse model [73]. Thus, although proton leak could be a compensatory mechanism for controlling mitochondrial ROS, it may inhibit synaptic development.

The findings from this study may have significant treatment implications. One study on ASD LCLs with elevated respiratory rates (AD-A LCLs) demonstrated that activation of the S6K1 pathway may have been inhibiting the expression of genes involved in the regulation of mitochondrial morphology and response to cellular stress [41]. Since the S6K1 pathway is downstream from the mammalian target of rapamycin complex 1 (mTORC1), involvement of S6K1 was demonstrated by showing that low-dose rapamycin normalized the elevated respiratory rates in the AD-A LCLs [41]. Additional studies in MTORopathies demonstrate the importance of MTORC1 hyperactivity inhibiting mitochondrial dynamics in neurons [74]. Parallel to these cellular *in vitro* studies, several clinical trials have examined the effect of mTOR inhibitors on ASD symptoms. One case report [75] and series [76] suggested that ASD symptoms improved in 6 patients with ASD and tuberous sclerosis complex (TSC) with everolimus treatment. However, the two controlled clinical trials that have evaluated everolimus in children with tuberous sclerosis complex only found marginal positive effect in one trial [77] and no benefit in another [78].

PGC1 α is not upregulated in LCLs from ASD individuals with elevated mitochondrial respiratory rates (AD-A) but is in LCLs from ASD with normal respiratory rates [41]. Other studies have demonstrated that PGC1 α regulates mitochondrial biogenesis in a mouse model of ASD [79] and methylation of the PGC1 α promoter region was associated with mitochondrial DNA copy number in children with ASD [80]. Interesting, medication and treatments that activate PGC1 α may have some benefit in ASD. Pioglitazone, an activator of PGC1 α and mitochondrial biogenesis, attenuated neuroinflammation and oxidative stress in the propionic acid [81] and valproic acid [82] rat model of ASD and cognitive and behavioral impairments in a maternal immune activation [83] and valproic acid [82] rat model of ASD. Pioglitazone has also been shown to improve ASD symptoms in a small open-label case series [84] and in a single-blind placebo controlled prospective cohort [85] and as an add-on to risperidone in a double-blind placebo-controlled trial [86].

Butyrate is an important short-chain fatty acid produced by the enteric microbiome which has been shown to have many positive effects on gut health as well as metabolism [87]. In an LCL model of mitochondrial dysfunction in ASD, butyrate has been shown to protect the LCLs with high respiratory rates (AD-A) from physiological stress and upregulate genes important in mitochondrial dynamics related to repair and morphology (MFN2, DRP1, FIS1, PINK1), resistance to oxidative (UCP2, SOD2, NRF2) and cellular (PCG1 α , HIF1 α) stress and mitochondrial biogenesis (SIRT3) [42]. In animal models of ASD butyrate normalized behavior and physiological brain abnormalities [88, 89]. Butyrate has been proposed as one of the links between ASD and imbalances in the microbiome [90].

LIMITATIONS

This study is limited by sample size given the invasive nature of obtaining fibroblasts from children. Furthermore, since mitochondrial function is heterogenous across tissues, result may be specific to fibroblast respiration and further studies will be needed to investigate relationships between mitochondrial morphology and mitochondrial respiration in other tissues.

CONCLUSIONS

This study suggests that variations in mitochondrial morphology of fibroblasts from individuals with ASD are associated with mitochondrial enzyme activity. Interestingly, fibroblasts with a relatively uncoupled respiratory chain have a mitochondrial morphology more akin to that of control fibroblasts, whereas those with a more coupled respiratory chain tend to have a more atypical morphology. The cause-effect relationship between respiratory chain status and mitochondrial morphology is not clear. However, given the fact that multiple lines of research suggest that high levels of oxidative stress are associated with ASD [91] and the fact that uncoupling of the mitochondrial respiratory chain can reduce oxidative stress, we speculate that respiratory chain uncoupling is most likely an adaptive mechanism to maintain mitochondrial health. However, although such an adaptive process might help maintaining a healthy mitochondrial pool, increased proton leak across the inner mitochondrial membrane has been associated with reduced synaptic plasticity, potentially resulting in atypical neurodevelopment. The fact that these pathophysiological abnormalities were associated with the severity of ASD symptoms suggest that, at least for a subset of patients, ASD severity may be on a continuum which could be positively modulated by targeting specific subcellular pathways. Therefore, further research is needed to explore the dynamics of this relationship and how it is phenotypically expressed in the characteristics of ASD.

REFERENCES

- Association AP. Diagnostic and statistical manual of mental disorders (DSM-5®). 5th edn. Washington, DC: American Psychiatric Association Publishing; 2013.
- McCarty P, Frye RE. Early detection and diagnosis of autism spectrum disorder: why is it so difficult? *Semin Pediatr Neurol.* 2020;35:100831.
- Maenner MJ, Shaw KA, Baio J, Washington A, Washington A, Patrick M, et al. Prevalence of autism spectrum disorder among children aged 8 years—autism and developmental disabilities monitoring network, 11 sites, United States, 2016. *MMWR Surveill Summ.* 2020;69:1–12.
- Schaefer GB, Mendelsohn NJ, Professional P, Guidelines C. Clinical genetics evaluation in identifying the etiology of autism spectrum disorders: 2013 guideline revisions. *Genet Med.* 2013;15:399–407.
- O’roak BJ, Stessman HA, Boyle EA, Witherspoon KT, Martin B, Lee C, et al. Recurrent de novo mutations implicate novel genes underlying simplex autism risk. *Nat Commun.* 2014;5:5595.
- Wang L, Zhang Y, Li K, Wang Z, Wang X, Li B, et al. Functional relationships between recessive inherited genes and genes with de novo variants in autism spectrum disorder. *Mol Autism.* 2020;11:75.
- Tammimies K, Marshall CR, Walker S, Kaur G, Thiruvahindrapuram B, Lionel AC, et al. Molecular diagnostic yield of chromosomal microarray analysis and whole-exome sequencing in children with autism spectrum disorder. *JAMA.* 2015;314:895–903.
- Yuen RK, Thiruvahindrapuram B, Merico D, Walker S, Tammimies K, Hoang N, et al. Whole-genome sequencing of quartet families with autism spectrum disorder. *Nat Med.* 2015;21:185–91.
- Rossignol DA, Genus SJ, Frye RE. Environmental toxicants and autism spectrum disorders: a systematic review. *Transl Psychiatry.* 2014;4:e360.
- Frye RE, Cakir J, Rose S, Palmer RF, Austin C, Curtin P. Physiological mediators of prenatal environmental influences in autism spectrum disorder. *Bioessays.* 2021;43:e2000307.
- Hallmayer J, Cleveland S, Torres A, Phillips J, Cohen B, Torigoe T, et al. Genetic heritability and shared environmental factors among twin pairs with autism. *Arch Gen Psychiatry.* 2011;68:1095–102.
- Sandin S, Lichtenstein P, Kuja-Halkola R, Larsson H, Hultman CM, Reichenberg A. The familial risk of autism. *JAMA.* 2014;311:1770–7.
- Frye RE, Slattery JC, Quadros EV. Folate metabolism abnormalities in autism: potential biomarkers. *Biomark Med.* 2017;11:687–99.
- James SJ, Melnyk S, Jernigan S, Cleves MA, Halsted CH, Wong DH, et al. Metabolic endophenotype and related genotypes are associated with oxidative stress in children with autism. *Am J Med Genet B: Neuropsychiatr Genet.* 2006;141B:947–56.
- James SJ, Melnyk S, Jernigan S, Pavliv O, Trusty T, Lehman S, et al. A functional polymorphism in the reduced folate carrier gene and DNA hypomethylation in mothers of children with autism. *Am J Med Genet B: Neuropsychiatr Genet.* 2010;153B:1209–20.
- Sequeira JM, Desai A, Berrocal-Zaragoza MI, Murphy MM, Fernandez-Ballart JD, Quadros EV. Exposure to folate receptor alpha antibodies during gestation and weaning leads to severe behavioral deficits in rats: a pilot study. *PLoS ONE.* 2016;11:e0152249.
- Frye RE, Cakir J, Rose S, Palmer RF, Austin C, Curtin P, et al. Mitochondria may mediate prenatal environmental influences in autism spectrum disorder. *J Personalized Med.* 2021;11:218.
- Frye RE, Cakir J, Rose S, Delhey L, Bennuri SC, Tippett M, et al. Prenatal air pollution influences neurodevelopment and behavior in autism spectrum disorder by modulating mitochondrial physiology. *Mol Psychiatry.* 2021;26:1561–77.
- Frye RE, Cakir J, Rose S, Delhey L, Bennuri SC, Tippett M, et al. Early life metal exposure dysregulates cellular bioenergetics in children with regressive autism spectrum disorder. *Transl Psychiatry.* 2020;10:223.
- Curtin P, Austin C, Curtin A, Gennings C, Arora M, (for the Emergent Dynamical Systems G. et al. Dynamical features in fetal and postnatal zinc-copper metabolic cycles predict the emergence of autism spectrum disorder. *Sci Adv.* 2018;4:eat1293.
- Nunnari J, Suomalainen A. Mitochondria: in sickness and in health. *Cell.* 2012;148:1145–59.
- Bornstein R, Gonzalez B, Johnson SC. Mitochondrial pathways in human health and aging. *Mitochondrion.* 2020;54:72–84.
- Cabral-Costa JV, Kowaltowski AJ. Neurological disorders and mitochondria. *Mol Asp Med.* 2020;71:100826.
- Rossignol DA, Frye RE. Mitochondrial dysfunction in autism spectrum disorders: a systematic review and meta-analysis. *Mol Psychiatry.* 2012;17:290–314.
- Frye RE. Biomarkers of abnormal energy metabolism in children with autism spectrum disorder. *N. Am J Med Sci.* 2012;5:141–7.
- Giulivi C, Zhang YF, Omanska-Klusek A, Ross-Inta C, Wong S, Hertz-Picciotto I, et al. Mitochondrial dysfunction in autism. *JAMA.* 2010;304:2389–96.
- Napoli E, Wong S, Hertz-Picciotto I, Giulivi C. Deficits in bioenergetics and impaired immune response in granulocytes from children with autism. *Pediatrics.* 2014;133:e1405–1410.
- Weissman JR, Kelley RI, Bauman ML, Cohen BH, Murray KF, Mitchell RL, et al. Mitochondrial disease in autism spectrum disorder patients: a cohort analysis. *PLoS ONE.* 2008;3:e3815.
- Frye RE, Rossignol DA. Mitochondrial dysfunction can connect the diverse medical symptoms associated with autism spectrum disorders. *Pediatr Res.* 2011;69:41R–47R.
- Shoffner J, Hyams L, Langley GN, Cossette S, Mylacraine L, Dale J, et al. Fever plus mitochondrial disease could be risk factors for autistic regression. *J Child Neurol.* 2010;25:429–34.
- Singh K, Singh IN, Diggins E, Connors SL, Karim MA, Lee D, et al. Developmental regression and mitochondrial function in children with autism. *Ann Clin Transl Neurol.* 2020;7:683–94.
- Frye RE, Naviaux RK. Autistic disorder with complex IV overactivity: a new mitochondrial syndrome. *J Pediatr Neurol.* 2011;9:427–34.
- Frye RE, Melnyk S, Macfabe DF. Unique acyl-carnitine profiles are potential biomarkers for acquired mitochondrial disease in autism spectrum disorder. *Transl Psychiatry.* 2013;3:e220.
- Frye RE, Cox D, Slattery J, Tippett M, Kahler S, Granpeesheh D, et al. Mitochondrial Dysfunction may explain symptom variation in Phelan-McDermid Syndrome. *Sci Rep.* 2016;6:19544.
- Palmieri L, Papaleo V, Porcelli V, Scarcia P, Gaita L, Sacco R, et al. Altered calcium homeostasis in autism-spectrum disorders: evidence from biochemical and genetic studies of the mitochondrial aspartate/glutamate carrier AGC1. *Mol Psychiatry.* 2010;15:38–52.
- Hassan H, Gnaiger E, Zakaria F, Makpol S, Karim NA. Alterations in mitochondrial respiratory capacity and membrane potential: a link between mitochondrial dysregulation and autism. *MitoFit Preprint Arch.* 2020;3:1–14.
- Frye RE, Rose S, Wynne R, Bennuri SC, Blossom S, Gilbert KM, et al. Oxidative stress challenge uncovers trichloroacetaldehyde hydrate-induced mitoplasticity in autistic and control lymphoblastoid cell lines. *Sci Rep.* 2017;7:4478.
- Rose S, Frye RE, Slattery J, Wynne R, Tippett M, Melnyk S, et al. Oxidative stress induces mitochondrial dysfunction in a subset of autistic lymphoblastoid cell lines. *Transl Psychiatry.* 2015;5:e526.
- Rose S, Frye RE, Slattery J, Wynne R, Tippett M, Pavliv O, et al. Oxidative stress induces mitochondrial dysfunction in a subset of autism lymphoblastoid cell lines in a well-matched case control cohort. *PLoS ONE.* 2014;9:e85436.
- Rose S, Wynne R, Frye RE, Melnyk S, James SJ. Increased susceptibility to ethylmercury-induced mitochondrial dysfunction in a subset of autism lymphoblastoid cell lines. *J Toxicol.* 2015;2015:573701.
- Bennuri SC, Rose S, Frye RE. Mitochondrial dysfunction is inducible in lymphoblastoid cell lines from children with autism and may involve the TORC1 pathway. *Front Psychiatry.* 2019;10:269.
- Rose S, Bennuri SC, Davis JE, Wynne R, Slattery JC, Tippett M, et al. Butyrate enhances mitochondrial function during oxidative stress in cell lines from boys with autism. *Transl Psychiatry.* 2018;8:42.
- Rose S, Bennuri SC, Wynne R, Melnyk S, James SJ, Frye RE. Mitochondrial and redox abnormalities in autism lymphoblastoid cells: a sibling control study. *FASEB J.* 2017;31:904–9.
- Delhey L, Kilinc EN, Yin L, Slattery J, Tippett M, Wynne R, et al. Bioenergetic variation is related to autism symptomatology. *Metab Brain Dis.* 2017;32:2021–31.
- Goldenthal MJ, Damle S, Sheth S, Shah N, Melvin J, Jethva R, et al. Mitochondrial enzyme dysfunction in autism spectrum disorders; a novel biomarker revealed from buccal swab analysis. *Biomark Med.* 2015;9:957–65.
- Legido A, Jethva R, Goldenthal MJ. Mitochondrial dysfunction in autism. *Semin Pediatr Neurol.* 2013;20:163–75.
- Pecorelli A, Ferrara F, Messano N, Cordone V, Schiavone ML, Cervellati F, et al. Alterations of mitochondrial bioenergetics, dynamics, and morphology support the theory of oxidative damage involvement in autism spectrum disorder. *FASEB J.* 2020;34:6521–38.
- Fealy CE, Grevendonk L, Hoeks J, Hesselink MKC. Skeletal muscle mitochondrial network dynamics in metabolic disorders and aging. *Trends Mol Med.* 2021; S1471–4914:00198-2.
- Leduc-Gaudet JP, Hussain SNA, Barreiro E, Gouspillou G. Mitochondrial dynamics and mitophagy in skeletal muscle health and aging. *Int J Mol Sci.* 2021;22:8179.
- Saxton WM, Hollenbeck PJ. The axonal transport of mitochondria. *J Cell Sci.* 2012;125:2095–104.
- Aouacheria A, Baghdiguan S, Lamb HM, Huska JD, Pineda FJ, Hardwick JM. Connecting mitochondrial dynamics and life-or-death events via Bcl-2 family proteins. *Neurochem Int.* 2017;109:141–61.
- Duvekot J, van der Ende J, Verhulst FC, Greaves-Lord K. The screening accuracy of the parent and teacher-reported Social Responsiveness Scale (SRS): comparison with the 3Di and ADOS. *J Autism Dev Disord.* 2015;45:1658–72.
- Murray MJ, Mayes SD, Smith LA. Brief report: excellent agreement between two brief autism scales (Checklist for Autism Spectrum Disorder and Social

- Responsiveness Scale) completed independently by parents and the Autism Diagnostic Interview-Revised. *J Autism Dev Disord.* 2011;41:1586–90.
54. Bolte S, Westerwald E, Holtmann M, Freitag C, Poustka F. Autistic traits and autism spectrum disorders: the clinical validity of two measures presuming a continuum of social communication skills. *J Autism Dev Disord.* 2011;41:66–72.
 55. Corsello C, Hus V, Pickles A, Risi S, Cook EH Jr, Leventhal BL, et al. Between a ROC and a hard place: decision making and making decisions about using the SCQ. *J Child Psychol Psychiatry.* 2007;48:932–40.
 56. Bishop DV, Norbury CF. Exploring the borderlands of autistic disorder and specific language impairment: a study using standardised diagnostic instruments. *J Child Psychol Psychiatry.* 2002;43:917–29.
 57. Frye RE, Tippett M, Delhey L, Slattery J. Test-retest reliability and validity of the autism symptoms questionnaire. *N Am J Med Sci.* 2015;8:149–53.
 58. Frye RE, Slattery J, Delhey L, Furgerson B, Strickland T, Tippett M, et al. Folinic acid improves verbal communication in children with autism and language impairment: a randomized double-blind placebo-controlled trial. *Mol Psychiatry.* 2018;23:247–56.
 59. Kaat AJ, Lecavalier L, Aman MG. Validity of the aberrant behavior checklist in children with autism spectrum disorder. *J Autism Dev Disord.* 2014;44:1103–16.
 60. Hill J, Powlitch S, Furniss F. Convergent validity of the aberrant behavior checklist and behavior problems inventory with people with complex needs. *Res Dev Disabil.* 2008;29:45–60.
 61. Rojahn J, Aman MG, Matson JL, Mayville E. The Aberrant Behavior Checklist and the Behavior Problems Inventory: convergent and divergent validity. *Res Dev Disabil.* 2003;24:391–404.
 62. Kirby DM, Thorburn DR, Turnbull DM, Taylor RW. Biochemical assays of respiratory chain complex activity. *Methods Cell Biol.* 2007;80:93–119.
 63. Burger BJ, Rose S, Bennuri SC, Gill PS, Tippett ML, Delhey L, et al. Autistic siblings with novel mutations in two different genes: insight for genetic workups of autistic siblings and connection to mitochondrial dysfunction. *Front Pediatr.* 2017;5:219.
 64. Jugé R, Breugnot J, Da Silva C, Bordes S, Closs B, Auouacheria A. Quantification and characterization of UVB-induced mitochondrial fragmentation in normal primary human keratinocytes. *Sci Rep.* 2016;6:35065.
 65. Lionnard L et al. Analyse des patrons de structuration et de distribution mitochondriale à des échelles subcellulaires locales ou globales. In: 10th Symposium de Morphométrie et Evolution des Formes Conference Bordeaux, France; 2018.
 66. Chajra H et al. An innovative strategy for quantitative analysis and visualization of mitochondrial organization, dynamics and activity in live skin cells. Milan, Italy: International Federation of Societies of Cosmetic Chemists; 2019.
 67. Cohen J. Statistical power analysis for the behavioral sciences. 2nd edn. Hillsdale, NJ: Lawrence Erlbaum Associates; 1988.
 68. Rose S, Melnyk S, Pavliv O, Bai S, Nick TG, Frye RE, et al. Evidence of oxidative damage and inflammation associated with low glutathione redox status in the autism brain. *Transl Psychiatry.* 2012;2:e134.
 69. Rose S, Niyazov DM, Rossignol DA, Goldenthal M, Kahler SG, Frye RE. Clinical and molecular characteristics of mitochondrial dysfunction in autism spectrum disorder. *Mol Diagn Ther.* 2018;22:571–93.
 70. Rose S, Melnyk S, Trusty TA, Pavliv O, Seidel L, Li J, et al. Intracellular and extracellular redox status and free radical generation in primary immune cells from children with autism. *Autism Res Treat.* 2012;2012:986519.
 71. Picard M, Zhang J, Hancock S, Derbeneva O, Golhar R, Golik P, et al. Progressive increase in mtDNA 3243A>G heteroplasmy causes abrupt transcriptional reprogramming. *Proc Natl Acad Sci USA.* 2014;111:E4033–4042.
 72. Vandewalle J, Bauters M, Van Esch H, Belet S, Verbeeck J, Fieremans N, et al. The mitochondrial solute carrier SLC25A5 at Xq24 is a novel candidate gene for non-syndromic intellectual disability. *Hum Genet.* 2013;132:1177–85.
 73. Licznarski P, Park HA, Rolyan H, Chen R, Mnatsakanyan N, Miranda P, et al. ATP synthase c-subunit leak causes aberrant cellular metabolism in fragile X syndrome. *Cell.* 2020;182:1170–85. e1179.
 74. Ebrahimi-Fakhari D, Saffari A, Wahlster L, Sahin M. Using tuberous sclerosis complex to understand the impact of MTORC1 signaling on mitochondrial dynamics and mitophagy in neurons. *Autophagy.* 2017;13:754–6.
 75. Hwang SK, Lee JH, Yang JE, Lim CS, Lee JA, Lee YS, et al. Everolimus improves neuropsychiatric symptoms in a patient with tuberous sclerosis carrying a novel TSC2 mutation. *Mol Brain.* 2016;9:56.
 76. Kilincaslan A, Kok BE, Tekturk P, Yalcinkaya C, Ozkara C, Yapici Z. Beneficial effects of everolimus on autism and attention-deficit/hyperactivity disorder symptoms in a group of patients with tuberous sclerosis complex. *J Child Adolesc Psychopharmacol.* 2017;27:383–8.
 77. Mizuguchi M, Ikeda H, Kagitani-Shimono K, Yoshinaga H, Suzuki Y, Aoki M, et al. Everolimus for epilepsy and autism spectrum disorder in tuberous sclerosis complex: EXIST-3 substudy in Japan. *Brain Dev.* 2019;41:1–10.
 78. Overwater IE, Rietman AB, Mous SE, Bindels-de Heus K, Rizopoulos D, Ten Hoopen LW, et al. A randomized controlled trial with everolimus for IQ and autism in tuberous sclerosis complex. *Neurology.* 2019;93:e200–e209.
 79. Feng C, Chen Y, Zhang Y, Yan Y, Yang M, Gui H, et al. PTEN regulates mitochondrial biogenesis via the AKT/GSK-3beta/PGC-1alpha pathway in autism. *Neuroscience.* 2021;465:85–94.
 80. Bam S, Buchanan E, Mahony C, O’Ryan C. DNA methylation of PGC-1alpha is associated with elevated mtDNA copy number and altered urinary metabolites in autism spectrum disorder. *Front Cell Dev Biol.* 2021;9:696428.
 81. Mirza R, Sharma B. A selective peroxisome proliferator-activated receptor-gamma agonist benefited propionic acid induced autism-like behavioral phenotypes in rats by attenuation of neuroinflammation and oxidative stress. *Chem Biol Interact.* 2019;311:108758.
 82. Mirza R, Sharma B. Beneficial effects of pioglitazone, a selective peroxisome proliferator-activated receptor-gamma agonist in prenatal valproic acid-induced behavioral and biochemical autistic like features in Wistar rats. *Int J Dev Neurosci.* 2019;76:6–16.
 83. Kirsten TB, Casarin RC, Bernardi MM, Felicio LF. Pioglitazone abolishes cognition impairments as well as BDNF and neurotensin disturbances in a rat model of autism. *Biol Open.* 2019;10:8.
 84. Boris M, Kaiser CC, Goldblatt A, Elice MW, Edelson SM, Adams JB, et al. Effect of pioglitazone treatment on behavioral symptoms in autistic children. *J Neuroinflammation.* 2007;4:3.
 85. Capano L, Dupuis A, Brian J, Mankad D, Genore L, Hastie Adams R, et al. A pilot dose finding study of pioglitazone in autistic children. *Mol Autism.* 2018;9:59.
 86. Ghaleiha A, Rasa SM, Nikoo M, Farokhnia M, Mohammadi MR, Akhondzadeh S. A pilot double-blind placebo-controlled trial of pioglitazone as adjunctive treatment to risperidone: effects on aberrant behavior in children with autism. *Psychiatry Res.* 2015;229:181–7.
 87. Frye RE, Rose S, Slattery J, MacFabe DF. Gastrointestinal dysfunction in autism spectrum disorder: the role of the mitochondria and the enteric microbiome. *Micro Ecol Health Dis.* 2015;26:27458.
 88. Takuma K, Hara Y, Kataoka S, Kawanai T, Maeda Y, Watanabe R, et al. Chronic treatment with valproic acid or sodium butyrate attenuates novel object recognition deficits and hippocampal dendritic spine loss in a mouse model of autism. *Pharm Biochem Behav.* 2014;126:43–49.
 89. Kratsman N, Getselter D, Elliott E. Sodium butyrate attenuates social behavior deficits and modifies the transcription of inhibitory/excitatory genes in the frontal cortex of an autism model. *Neuropharmacology.* 2016;102:136–45.
 90. Macfabe DF. Short-chain fatty acid fermentation products of the gut microbiome: implications in autism spectrum disorders. *Microb Ecol Health Dis.* 2012;23:19260.
 91. Frye RE, James SJ. Metabolic pathology of autism in relation to redox metabolism. *Biomark Med.* 2014;8:321–30.

ACKNOWLEDGEMENTS

The authors would also like to thank John Slattery for his help with coordination participants, Sirish C. Bennuri for help coordinating samples, Dr Stephen Kahler for his help with patient recruitment, Dr. Sophie Charrasse and Charlotte Saint-Omer for careful review of the manuscript and the families who have volunteer to be involved in research despite their demanding lives. This work was performed with the help of Vicky Diakou and Elodie Jublanc at the imaging facility Montpellier Ressources Imagerie (MRI), member of the national infrastructure France-Biomed (IBiSA, ISO 9001-2015 NFX 50-900). This research was funded, in part, by the N of 1 Foundation (Dallas TX), the Phoenix Children’s Hospital Foundation (Phoenix, AZ), the Arkansas Biosciences Institute (Little Rock, AR, USA), The Jonty Foundation (St Paul, MN), the Gupta Family Foundation (Atherton, CA), and the Jager Family Foundation (Chicago, IL). This work was supported by CNRS, University of Montpellier, Fondation ARC No LS 172351 (to A.A.), the Ligue Contre le Cancer Comité du Gard No LS 176487 (to A.A.), MUSE-Montpellier University of Excellence (to A.A.) and CLARIANT Active Ingredients.

AUTHOR CONTRIBUTIONS

Conceptualization: R.E.F., A.A., and S.R.; methodology: R.E.F., A.A., and L.L.; software: A. A. and V.R.; formal analysis: R.E.F.; laboratory: I.S., M.K., A.A., P.J.M., and S.R.; data curation: L.D. and M.T.; writing—original draft preparation: R.E.F.; writing—review and editing: R.E.F., A.A., and S.R.; visualization: A.A. V.R., and L.L.; supervision and project administration: R.E.F., A.A., and S.R.; funding acquisition, R.E.F. and A.A. All authors have read and agreed to the published version of the manuscript.

COMPETING INTERESTS

The authors R.E.F., I.S., M.A.K., A.A., L.L., H.C., M.F., K.K., V.R., P.J.M., L.D., M.T., and S.R. declare no conflict of interest. The funders had no role in the design of the study; in

the collection, analyses, or interpretation of data; in the writing of the manuscript, or in the decision to publish the results. The MITOTOUCH[®] algorithm was registered to the APP, the French Software registration agency.

ADDITIONAL INFORMATION

Supplementary information The online version contains supplementary material available at <https://doi.org/10.1038/s41398-021-01647-6>.

Correspondence and requests for materials should be addressed to Richard E. Frye.

Reprints and permission information is available at <http://www.nature.com/reprints>

Publisher's note Springer Nature remains neutral with regard to jurisdictional claims in published maps and institutional affiliations.



Open Access This article is licensed under a Creative Commons Attribution 4.0 International License, which permits use, sharing, adaptation, distribution and reproduction in any medium or format, as long as you give appropriate credit to the original author(s) and the source, provide a link to the Creative Commons license, and indicate if changes were made. The images or other third party material in this article are included in the article's Creative Commons license, unless indicated otherwise in a credit line to the material. If material is not included in the article's Creative Commons license and your intended use is not permitted by statutory regulation or exceeds the permitted use, you will need to obtain permission directly from the copyright holder. To view a copy of this license, visit <http://creativecommons.org/licenses/by/4.0/>.

© The Author(s) 2021