



HAL
open science

Estimation of the Impact of Climate Change on Water Resources Using a Deterministic Distributed Hydrological Model in Côte d'Ivoire: Case of the Aghien Lagoon

Wa Kouakou Charles N'dri, Séverin Pistre, Jean Patrice Jourda, Kan Jean Kouamé

► To cite this version:

Wa Kouakou Charles N'dri, Séverin Pistre, Jean Patrice Jourda, Kan Jean Kouamé. Estimation of the Impact of Climate Change on Water Resources Using a Deterministic Distributed Hydrological Model in Côte d'Ivoire: Case of the Aghien Lagoon. *Journal of Geoscience and Environment Protection*, 2019, 7 (7), pp.74 - 91. 10.4236/gep.2019.77007 . hal-03332131

HAL Id: hal-03332131

<https://hal.umontpellier.fr/hal-03332131>

Submitted on 2 Sep 2021

HAL is a multi-disciplinary open access archive for the deposit and dissemination of scientific research documents, whether they are published or not. The documents may come from teaching and research institutions in France or abroad, or from public or private research centers.

L'archive ouverte pluridisciplinaire **HAL**, est destinée au dépôt et à la diffusion de documents scientifiques de niveau recherche, publiés ou non, émanant des établissements d'enseignement et de recherche français ou étrangers, des laboratoires publics ou privés.



Distributed under a Creative Commons Attribution 4.0 International License

Estimation of the Impact of Climate Change on Water Resources Using a Deterministic Distributed Hydrological Model in Côte d'Ivoire: Case of the Aghien Lagoon

Wa Kouakou Charles N'Dri^{1,2}, Séverin Pistre^{2*}, Jean Patrice Jourda¹, Kan Jean Kouamé¹

¹Laboratory of Sciences and Techniques of Water and Environment, Felix Houphouët-Boigny University of Cocody-Abidjan, Abidjan, Côte d'Ivoire

²IRD, CNRS, HSM, University of Montpellier, Montpellier, France

Email: *charlesndri10@yahoo.fr

How to cite this paper: N'Dri, W. K. C., Pistre, S., Jourda, J. P., & Kouamé, K. J. (2019). Estimation of the Impact of Climate Change on Water Resources Using a Deterministic Distributed Hydrological Model in Côte d'Ivoire: Case of the Aghien Lagoon. *Journal of Geoscience and Environment Protection*, 7, 74-91.

<https://doi.org/10.4236/gep.2019.77007>

Received: December 1, 2018

Accepted: July 23, 2019

Published: July 26, 2019

Copyright © 2019 by author(s) and Scientific Research Publishing Inc.

This work is licensed under the Creative Commons Attribution International License (CC BY 4.0).

<http://creativecommons.org/licenses/by/4.0/>



Open Access

Abstract

This work aims to evaluate the impact of climate change on the quantitative availability of the Aghien lagoon located in the north of the Abidjan district in Côte d'Ivoire. In the first step, the semi-distributed SWAT (Soil and Water Assessment Tools) based physical model (Arnold et al., 1998) was calibrated and validated at the monthly time step over the period 1960-1981, in the Me watershed for which data from flow rates are available. SWAT was then applied on the watershed of the lagoon of Aghien which is ungauged but for which the challenges are considerable for the drinking water supply of the Abidjanese population. In the second step, the gross outputs (precipitation, temperatures) of six climate models of the CORDEX-Africa project under the "Representative Concentration Pathways" (RCP 4.5 and RCP 8.5) scenarios were corrected using the delta method. These corrected outputs were used at the SWAT model input to project the impact of climate change on the flow of the Aghien lagoon to horizons 2040 (2035-2056), 2060 (2057-2078) and 2080 (2079-2100). The projections made on these different horizons were compared with the simulated flow over the period 1960-1981. The results show a sensible decrease in the annual flow of the Aghien lagoon compared to the reference period (1960-1981). Under the medium assumption (RCP 4.5), the models predict a decrease in the annual discharge almost 10% on average. Under the pessimistic hypothesis (RCP 8.5), the average annual discharge should decrease by more than 17%. On a monthly basis, flows in August and September would increase by more than 80% and those in October and November would increase by more than 20% in both RCP scenarios.

Keywords

Abidjan, Climate Change, Côte d'Ivoire, Aghien Lagoon, SWAT

1. Introduction

Management and water supply remain a major challenge for the Ivorian government. At present, the water needs of the Ivorian populations have increased, in particular those of the autonomous district of Abidjan. A deficit of 58 million m³/year must be mobilized to meet the water needs of this population (Ehouman et al., 2017). With a view to filling the water deficit in the economic capital Abidjan, it was decided to operate the Aghien lagoon located north of this city. However, this resource could be impacted by climate change that influences the water balance by altering evapotranspiration rate, temperature, and precipitation (Abdelkrim, 2013). Change of these hydrological variables will have a negative impact on the availability of water resources in West Africa (Kouakou et al., 2012; Servat et al., 1998) as well as in the rest of the world. Water resources of Côte d'Ivoire, a country in West Africa, will not escape the consequences of this phenomenon caused by the increase of greenhouse gases in the atmosphere. Indeed, studies have shown that the flow rates of some main rivers, in particular, the flows of the Bandama and Sassandra rivers will decrease during the 21st century (Goula et al., 2006; Soro et al., 2017). What would be the case for the Aghien lagoon? For a better understanding of the effects of climate change on the future quantitative availability of this lagoon, the Soil and Water Assessment Tools (SWAT) hydrological model was applied to its basin to simulate the flow over the periods 1960-1981, 2035-2056 (horizon 2040), 2057-2078 (horizon 2060) and 2079-2100 (horizon 2080). The robustness of the SWAT model to the flow in Ivorian context has been demonstrated simulate on the basin of Buyo (Koua, 2014) and of Taabo (Anoh, 2014).

2. Study Area

The Aghien basin is located in the southeastern part in Côte d'Ivoire, in the north of economical capital Abidjan. It is a subwatershed of the Me River basin. The basin area of this river is 4140 km² (Figure 1). The Aghien basin has a surface area of approximately 365 km² and lies between 3°49'W and 3°58'W longitude and 5°21'N and 5°28'N latitude. The main tributaries of lagoon Aghien are Me river, Djibi and Bété rivers. The Aghien area belongs to the equatorial transition climate. It is characterized by two wet periods (May to July and October to November) and two dry periods (December to April and August to September). The average annual rainfall of the study area is about 1500 mm and average annual air temperature range from 23°C to 28.5°C. The vegetation on the borders of the Aghien lagoon is mainly dominated by Swamp forest composed of mangroves and bamboos. This vegetation plays an important role in the stability of

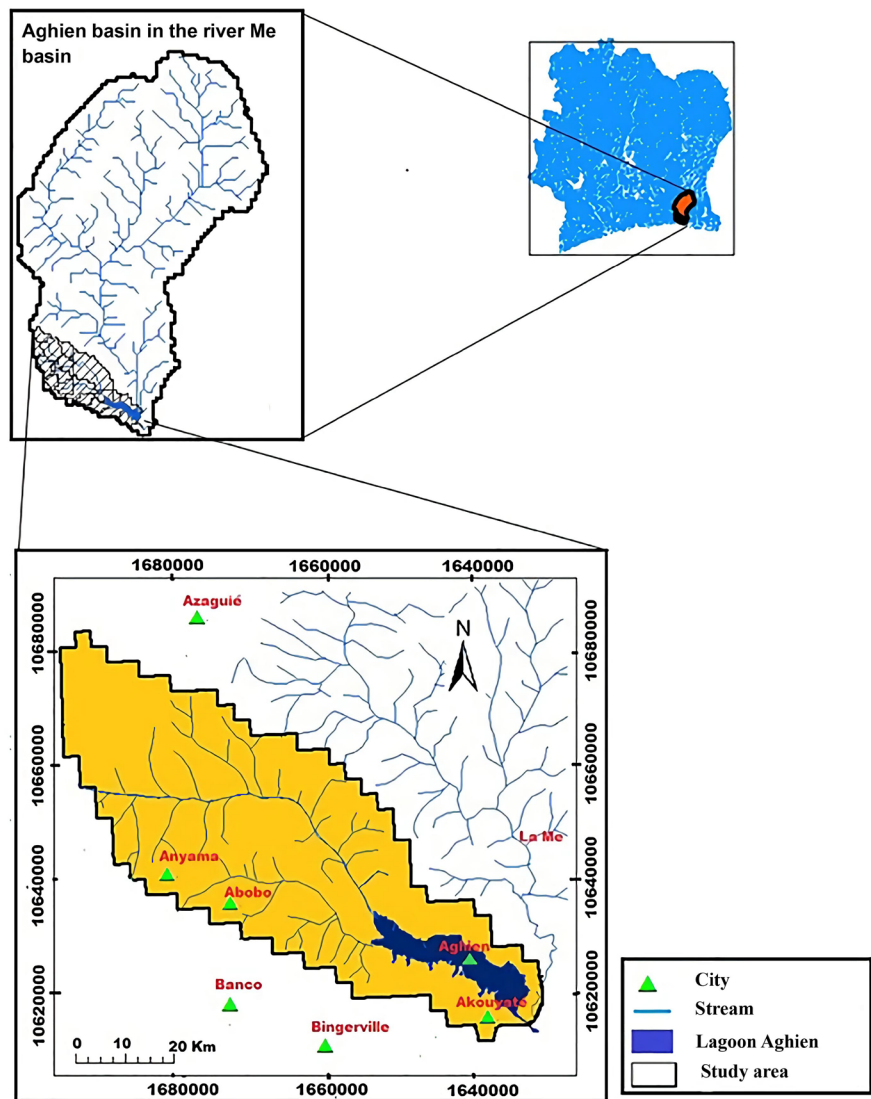


Figure 1. Location of the study area with Aghien watershed and Me.

the lagoon environment. It acts as a buffer zone by preventing nutrients and sediments from being discharged into the Aghien lagoon and ensures wildlife habitat.

3. Materials and Methods

3.1. Materials

3.1.1. Digital Elevation Model (DEM) Data

The digital elevation model (DEM) was downloaded from the shuttle radar topography mission (STRM) website (<http://srtm.csi.cgiar.org/SELECTION/inputCoord.asp>). It allowed to delineate the watershed, the sub-basins and to calculate slopes and to extract stream network.

3.1.2. Land Use Data

The Aghien Lagoon Basin land cover map (**Figure 2**) made from Land SAT Oli-Tirs image under Envi 5.1 (https://www.youtube.com/watch?v=OAtIh_5qUv8 (use to

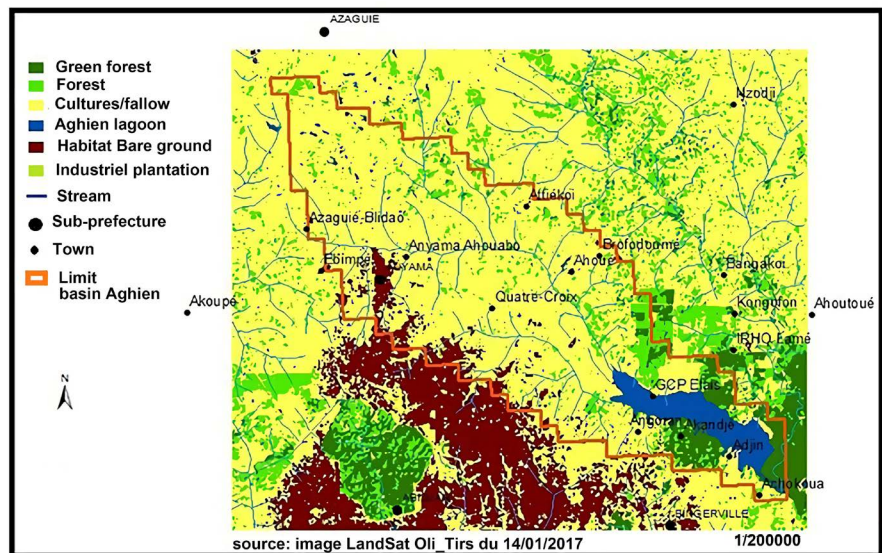


Figure 2. Aghien lagoon basin land cover map and surroundings.

Extraction of the study area and resampling),

https://www.youtube.com/watch?v=yk9kH7tU_BQ (use for the classification)) software was used. It dates from January 2017.

3.1.3. Soil Map and Soil Type Data

The soil map used in this article is that of FAO (Food and Agriculture Organization of the United Nations), established in 1995 at the scale 1/5,000,000 for all Africa. It takes into account 5000 soil types and includes the physicochemical properties of soils made by Reynolds et al. (1999) for all Africa. These are essential for the implementation of the SWAT model. The soil data to be integrated into SWAT are: the texture, the available water content, the hydraulic conductivity, the apparent density, the organic carbon content of the different soil layers. SWAT soil data from the study area were automatically extracted from FAO soil data. To do this, we have established a correspondence between the soil types (moderately and strongly desaturated Ferralitic soil and hydromorphic soil) of the Aghien lagoon basin and that of the ArcSwat database in which the values of the physicochemical parameters of the soils used by SWAT are recorded. This correspondence allowed to obtain three types of SWAT soils for the Aghien lagoon basin (Figure 3) which are representative of the types and characteristics of the soil of the zone.

3.1.4. Weather Data

Meteorological data are extracted from the SIEREM database (<http://www.hydrosociences.fr/sierem>). These data include precipitation and maximum and minimum temperatures at the daily time step and cover the period from 1951 to 1998, which is 47 years. With no data from stations in Aghien Lagoon Basin, we selected SIEREM stations near the Aghien lagoon watershed (Figure 4) to simulate the flow in this basin. These are the Azaguié, Banco and Binger-ville stations.

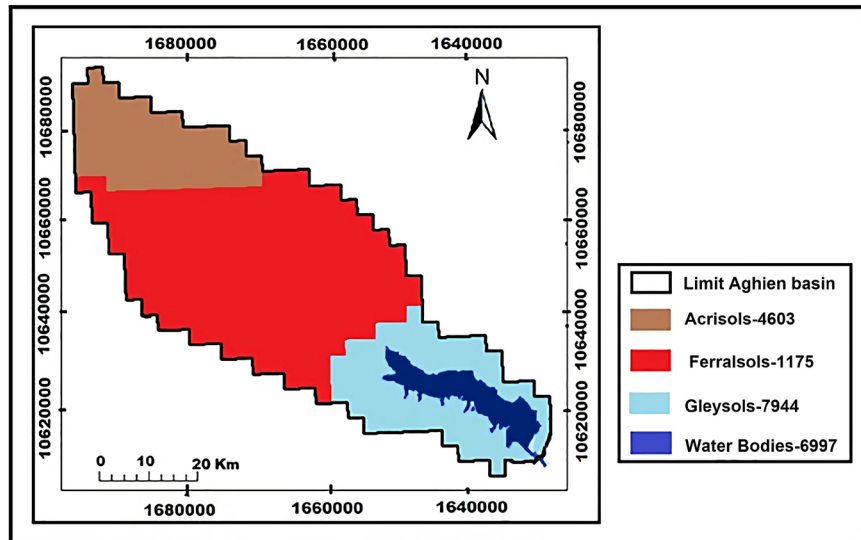


Figure 3. SWAT soils class map of the Aghien lagoon watershed.

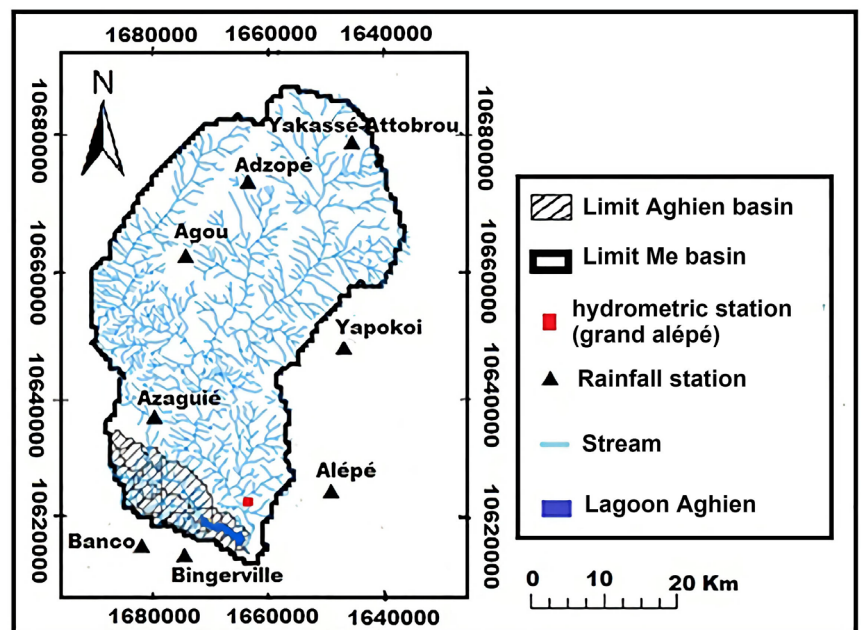


Figure 4. Location of the hydrometric station and rainfall stations.

Figure 5 shows the area of influence of each station. The different zones of influence were determined by polygon cutting of the Aghien lagoon watershed using Thiessen’s improved polygonation method (Atchade, 2004). This method is developed under “extension analyse tools, Proximity, create Thiessen polygons of arc-gis 10.2” (<http://www.esri.com>).

3.1.5. Discharge Data

These are daily discharge daily data from the database of Hydrosiences Montpellier (HSM). These data cover the period 1957-1993. It should be noted that they were provided to them by the Water Directorate of Côte d’Ivoire and were

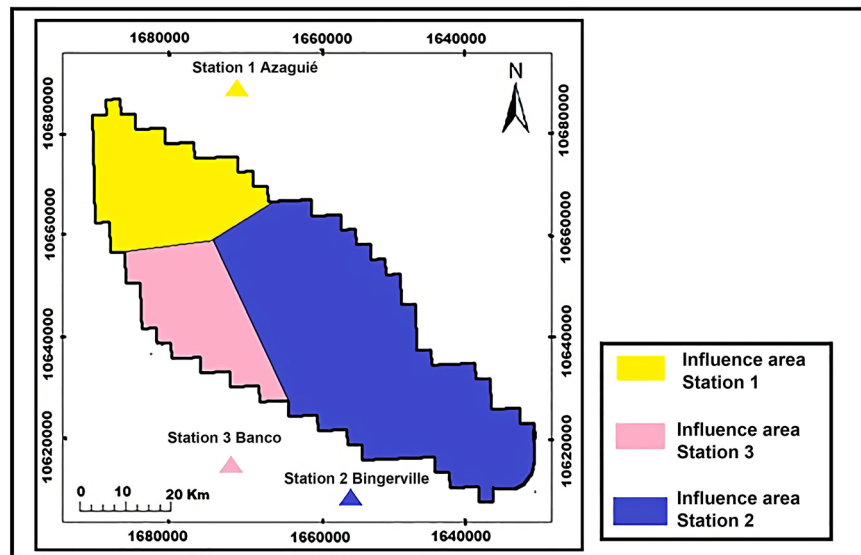


Figure 5. Influence area of rainfall.

recorded at the gauging station of Grand Alépé (Figure 4). The availability of discharge data is shown in Table 1.

3.1.6. Future Climate Data

Ten global climate models (GCM) of the CORDEX-AFRICA project under two CMIP5 scenarios (RCP4.5 and RCP 8.5) were considered in this study. These models are presented in Table 2. The variables available in daily under the RCP4.5 and RCP8.5 scenarios are: precipitation, maximum and minimum temperatures, potential evapotranspiration. The outputs of these models cover the period from 1951 to 2100. This period is divided in two: 1951-2005 for historical data and 2006-2100 for future data. RCP 4.5 is a scenario that simulates an increase in the radiative forcing to reach a maximum around 2100 before stabilizing. Under this scenario, greenhouse gas (GES) emissions will peak around 2040, then decline and stabilize around 2080. RCP 4.5 is close to the SRES B1 marker scenario (Van Vuuren et al., 2011). Contrariwise the RCP 8.5 simulates a constant increase in radiative forcing to reach 8.5 W/m² in 2100 without reaching a maximum. It is close to the SRES A2 marker scenario (Riahi et al., 2011). RCP 8.5 is the most pessimistic.

3.2. Methods

3.2.1. Evaluation of the Performance of Climate Models

The assessment of the performance of the models to reproduce the two most influential parameters of the hydrological cycle (observed temperature and rainfall), was carried out using the bias method (Sabrina, 2015). This method consists to estimating the difference in between simulated (X_{sim}) and observed (X_{obs}) parameters compared to those observed over the 1960-1981 reference period (Equation (1)). It is therefore a “relative difference”. It makes it possible to evaluate the difference between rainfall and simulated temperatures at the observations.

Table 1. Availability of discharge measurements (1957-1993).

STATION	parameter	DATE			
		1957 to 1974	1975	1976 to 1981	1982 to 1993
GRAND ALÉPÉ (ME)	Discharge	Available	No available	Available	No available

No available: little or no data.

Table 2. List of ten (10) Global Climate Models (GCMs).

MCG	Institution	RCM (Regional Climate Models)	Reference
CNRM-ARPEGE	CNRM. France	RCA4 (CNRM-CM5)	(Déqué, 2010)
MPI-ESM-LR	Max-Planck institut für meteorologie. Allemagne	RCA4 (MPI-ESM-LR)	(Jacob et al., 2007)
IPSL-CM5	Institut Pierre-Simon Laplace. France	RCA4 (IPSL-CM5)	(Dufresne et al., 2013)
CANESM2	Canadien Centre for Climate Modelling and analysis. Victoria. BC. Canada	RCA4 (CanESM2)	(Scinocca et al., 2008)
CSIRO-Mk3.6.0	Organisation de recherche scientifique et industrielle du Commonwealth australien	RCA4 (Csiro-MK 3.6.0)	
EC-EARTH	Consortium européen (multiple)	RCA4 (EC-EARTH)	(Baker & Huang, 2013)
HadGEM2-ES	UKMO Hadley Centre (Royaume-Uni)	RCA4 (HadGEM2-ES)	
MIROC-ESM	Japan Agency of Science and Earth Technology. Institute of Atmosphere and Ocean Research (University of Tokyo). Japan	RCA4 (MIROC-ESM)	(Miao et al., 2014)
NorESM1-M	Climat center of Norwegian. Norvège	RCA4 (NorESM1-M)	
NOAA-GFDL	Laboratory of Geophysical Fluid Dynamics (GFDL; États-Unis)	RCA4 (NOAA-GFDL)	(Baker & Huang, 2013)

If the value of the bias is negative then the model underestimates the observed data and if it is positive it overstates the observed data. The interest in evaluating the performance of climate models is to identify the model that best reproduces the interannual variability of cumulated rainfall and temperatures of the Aghien lagoon watershed.

$$Bias = \frac{\bar{X}_{sim} - \bar{X}_{obs}}{\bar{X}_{obs}} \quad (1)$$

1) Analysis of simulated interannual and seasonal temperatures

Most models provide reasonably reliable predictions of the annual and seasonal mean temperature of the study basin. Of the 10 global climate models, seven models (CSIRO, hadGEM2, MIROC, NOAA-G, CNRM, Ec-EARTH, and MPI) underestimate the average annual and seasonal temperature of the Binger-ville station, while the others (CanESM2, IsplCM5, norESM1) overestimate it (Figure 6(a)). At the Azaguié station, only three of the GCMs have temperature and rainfall data. Two (MPI and Ec-EARTH) underestimate the average annual and seasonal temperature while the CNRM model overestimates it (Figure 6(b)). The models that give the least biased results are: CNRM, MIROC, HadGEM2, CSIRO (annual) and CNRM, MIROC, HadGEM2 (seasonal) at Binger-ville station and MPI, CNRM at Azaguié station. The choice of the performing

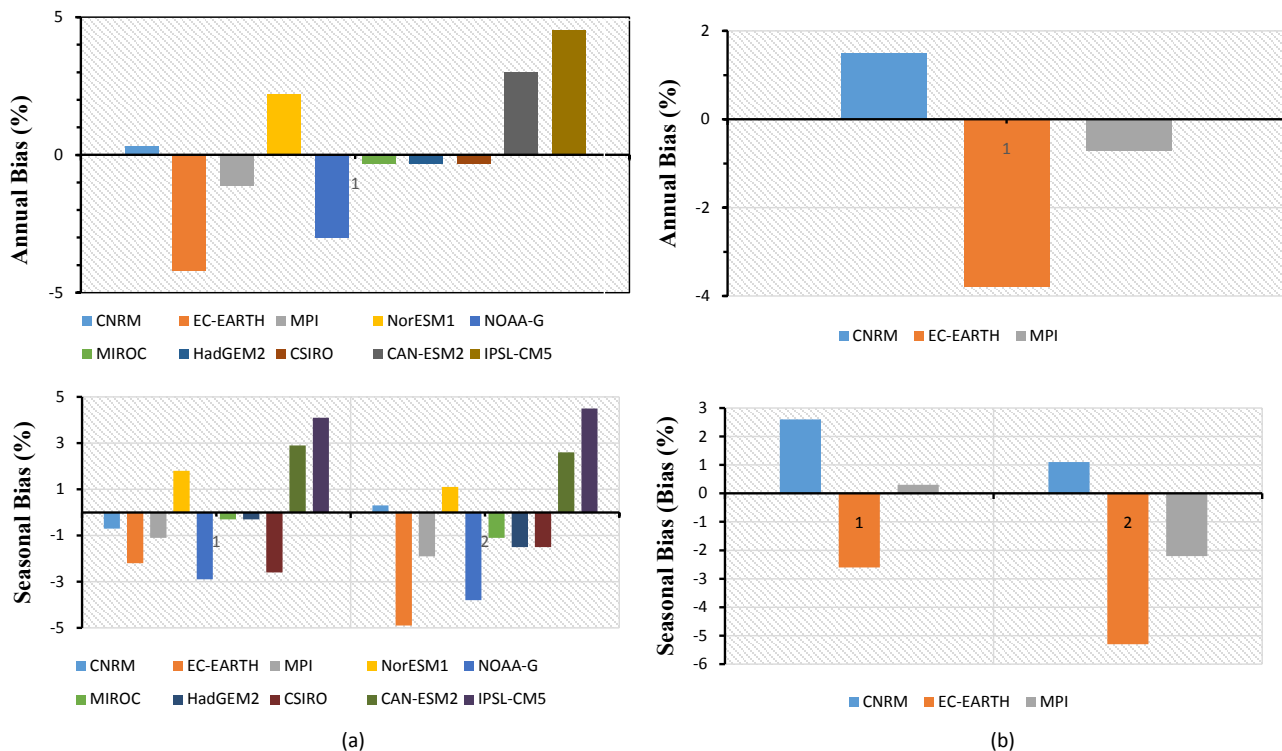


Figure 6. Estimation of the bias between observed baseline (1960-1981) and simulated GCM temperatures (a) Bingerville station; (b) Azaguié station.

model was based on the model that overestimates the least and another that underestimates the least.

2) Analysis of simulated interannual and seasonal rainfall

As a first step, a comparison between simulated and observed annual cumulated rainfall was performed. The annual rainfall is overestimated by most GCMs except the CNRM, MPI, CSIRO, IPSL-CM5 models of the Bingerville Station (**Figure 7(a)**). At the Azaguié station, the CNRM, Ec-EARTH and MPI models also overestimate the annual rainfall (**Figure 7(b)**). The models that best reproduce the annual rainfall are: Ec-EARTH, NorESM1, CanESM2 at Bingerville station and CNRM at Azaguié station.

The seasonal cycle simulated by the GCMs clearly shows that they tend to underestimate precipitation during the wet period (May to July and October to November) and overestimate rainfall during the dry period (December to April and August to September). The total wet period rainfall simulated by the different models show that the IPSL-CM5, HadGEM2, MIROC models for the Bingerville station (**Figure 8(a)**) and CNRM, MPI, Ec-EARTH for the Azaguié station (**Figure 8(b)**) overall reproduce a structure in phase with the observations. Contrariwise the CNRM, MPI, CSIRO, Ec-EARTH, NorESM1, CanESM2, NOAA-G models (Bingerville station) deviate strongly from the observations. In dry periods models strongly overestimate total rainfall with the exception of CNRM, CSIRO models from Bingerville station. This large difference between simulated wet season rainfall and simulated dry season rainfall influences the

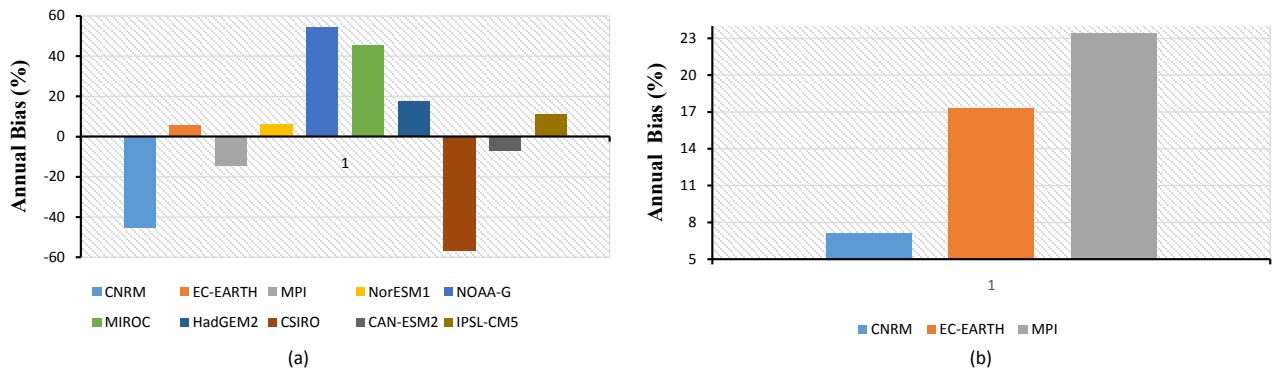


Figure 7. Estimation of the bias between observed baseline (1960-1981) and simulated GCM rainfall; (a) Bingerville station; (b) Azaguié station.

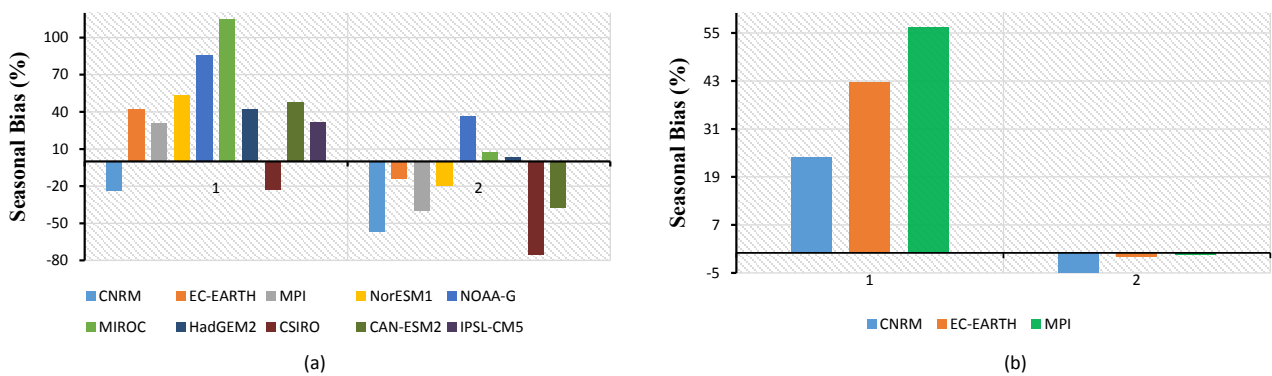


Figure 8. Estimation of the bias (%) between seasonal total rainfalls observed and simulated over the period 1960-1981; (a) Bingerville station; (b) Azaguié station.

variability of annual rainfall cumul, as well as the choice of model. The total rainfall of the Aghien lagoon basin being better reproduced by the climate models during the wet period than during the dry period. It is therefore suitable to facilitate the choice of the most efficient model, to compare the observed and simulated data of the wet period only.

The results of the comparison of the biases of the different global climatic models of the CORDEX-AFRIQUE project have shown that a single climate model cannot perform well to reproduce the variability of precipitation for the two stations. There is at least one model capable of reproducing the temporal variability of precipitation for each station and for each time scale.

Since the SWAT hydrological model simulation is carried out at the monthly time step in this study, the global climate models selected are the ones that best simulate the observations at the seasonal scale. Thus, the performing models selected following the analysis of the observed and simulated data are recorded in **Table 3** below.

Affected of bias more or less importantly, the raw outputs of these models must be accompanied by bias correction methods (Paturel, 2014). Thus, the delta method (Ducharne et al., 2003) was required in this study to correct the bias of the selected climate models. This approach corrects two types of distributions:

Table 3. Lists of selected models.

STATIONS	BINGERVILLE		AZAGUIE	
PARAMETERS	RAINFALL	TEMPERATURE	RAINFALL	TEMPERATURE
MODELS	<u>IPSL-CM5</u> <u>HADGEM2</u> <u>MIROC</u>	<u>CNRM</u> <u>MIROC HADGEM2</u>	<u>CNRM</u> <u>MPI</u> <u>EC-EARTH</u>	<u>MPI</u> <u>CNRM</u>

- “additive” disturbances for temperatures

$$T_{scen,j,h} = T_{obs,j} + (T_{scen,m,h} - T_{ref,m}) \quad (2)$$

- “multiplicative” disturbances for the precipitations

$$P_{scen,j,h} = P_{obs,j} \times (P_{scen,m,h} \div P_{ref,m}) \quad (3)$$

$T_{obs,j}$ and $P_{obs,j}$ are the daily observed temperature and precipitation; $T_{scen,m,h}$ and $P_{scen,m,h}$ are the mean monthly temperatures and precipitation simulated by the models over the period of the scenario considered; $T_{ref,m}$ $P_{ref,m}$ are the mean monthly temperatures and precipitation over the reference period. $T_{scen,j,h}$ and $P_{scen,j,h}$ are the daily temperature and precipitation of the considered time period.

3.2.2. Hydrological Model: SWAT

1) SWAT model description

SWAT “Soil and Water Assessment Tool” is a semi-distributed physical-based model, developed to predict the impact of management practices on water and agricultural chemical yields on a basin scale (Arnold et al., 1998). It has developed by researchers at the USDA (United States Department of Agriculture)—Agricultural Research Service (Ogden et al., 2001; Neitsch et al., 2005). SWAT takes into account all the hydrologic cycle, represented in the watershed, so spatialized. The time step used for analysis is the day. SWAT can analyze the impacts of climate, soil, vegetation and agricultural activities on water flow. The basic space unit at SWAT calculations is the Hydrological Response Unit (HRU). It is the result of the combination of a soil type, a land use class and a subwatershed. It is coupled with a GIS (geographic information system) such as ArcView GIS 3.2 or Arcgis 9.x. or Arcgis 10.x from ESRI. This has a double interest. Indeed, the use of a GIS makes it possible both to facilitate the pretreatment of the data to be integrated into the model and also to visualize the results of the simulation. Its implementation requires several input data: digital elevation model (DEM), soil data, weather data, land use data, agricultural practice etc. SWAT, subdivides hydrological modeling of the watershed into two phases (Neitsch et al., 2005): the land phase and routing phase. The land phase is based on soil water balance equation for each day of simulation (4):

$$SW_t = SW_0 + \sum_{i=1}^t (R_{day} - Q_{surf} - E_a - W_{seep} - Q_{gw})_i \quad (4)$$

where: SW_t is the final soil water content (mm); SW_0 is the initial soil water content on day i (mm); t is the time (days); R_{day} is amount of precipitation on day i

(mm); Q_{surf} is the amount of surface runoff on day i (mm), E_a is the amount of evaporation on day i (mm); W_{seep} is the amount of water entering the vadose zone from the soil profile on day i (mm); Q_{gw} is the amount of return flow on day i (mm).

2) Calibration and validation of SWAT model

The Aghien lagoon basin is an ungauged basin. However, as shown in **Figure 1**, the Aghien lagoon basin is a sub-basin of the Me basin. They therefore belong to the same geographical area. This geographical proximity is a sufficient indicator of the hydrogeological, climatic and pedological similarity of these two basins. On the basis of this similarity hypothesis, we used the flux data at the daily time step of the Grand Alépé hydrological station on the Mé to calibrate the SWAT model on this watershed. The calibration procedure requires three main steps. It is first necessary to identify the sensitive parameters (parameters that can influence the performance of the model), then adjust the parameters and finally validate the model over a different period of the calibration phase. Thus, the period 1960-1969 (wet period) was chosen for calibration of the model and validation was carried out on the dry period (1970-1981). **Figure 9** illustrates the periods used for calibration and validation. The Nash-Sutcliffe criteria (NSE) and determination coefficient (R2) used to evaluate the performance of the SWAT model are satisfactory because they are greater than the guide value (0.5) (Santhi et al., 2001). NSE = 0.807 and R2 = 0.809 in calibration (1960 to 1969) and NSE = 0.59 and R2 = 0.64 in validation (1970 to 1981) (N'Dri et al., 2019). The SWAT model has therefore, in view of the values of these coefficients, demonstrated its robustness to reproduce the flow on the basin of the Me river. Thus, the adjusted parameters of the model for the Mé basin have been reintegrated into the model to simulate the flow over the lagoon of Aghien (ungauged) over the period 1960-1981 (baseline period).

3.2.3. Climate Change Simulations

Rainfall and temperature data of the six climate models selected for the RCP 4.5

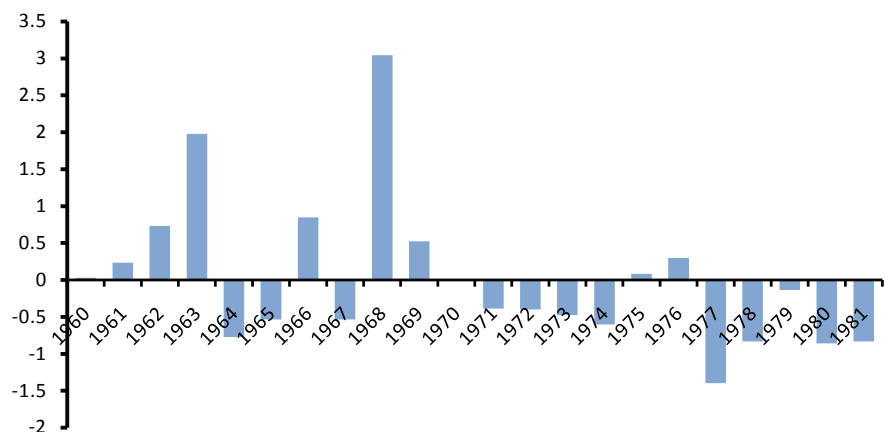


Figure 9. Reduced centered index on precipitation and calibration-validation period retained.

and RCP 8.5 scenarios allowed simulations of the discharge of the Aghien lagoon. Future simulations of the Aghien lagoon discharge 2040 (2035-2056), 2060 (2057-2078) and 2080 (2079-2100) horizons were compared to the simulations of the baseline period 1960-1981. The comparison between the future simulations and the simulations over the baseline period is made possible because the reproduction of the processes on this period (1960-1981) was validated beforehand, during the calibration/validation phase of the SWAT model. This comparison allowed to analyze the impacts of climate change on the future (quantitative) availability of the Aghien lagoon.

4. Results and Discussion

4.1. Potential Impacts of Climate Change on Precipitation and Potential Evapotranspiration of Aghien Lagoon Basin

4.1.1. Change in Potential Evapotranspiration (PET)

PET shows an overall increasing trend in the 21st century under the RCP 4.5 and RCP 8.5 scenarios. Indeed, trends are becoming more pronounced under both scenarios, towards the end of the 21st century (**Table 4**), but also a slight stationarity of the PET is observed under the RCP 8.5 scenario between the 2060 and 2080 horizons.

4.1.2. Change in Rainfall

The evolution of precipitation at different horizons is shown in **Figure 10**. The rates of decrease in rainfall are relatively more in RCP 8.5 than RCP 4.5 over the basin. Under RCP 4.5, the rainfall may decrease from 9.06% on average and under RCP 8.5 rainfall may decrease from 16.96% on average in future periods. The calculated rates of change are shown in **Table 5** below. The decrease in precipitation is more pronounced towards the end of the century under the two scenarios:

Table 4. Percentage change in the annual evapotranspiration potential for the different horizons compared the baseline period (1960-1981).

		Baseline period	2040 (2035-2056)		2060 (2057-2078)		2080 (2079-2100)	
			Average	Variation (%)	Average	Variation (%)	Average	Variation (%)
PET (mm)	RCP 4.5	1230.65	1330.28	+8.09	1342.23	+9.06	1369.47	+11.28
	RCP 8.5		1358.81	+10.42	1367.95	+11.15	1366.16	+11.05

Table 5. Percentage change in the annual rainfall for the different horizons compared the baseline period (1960-1981).

		Baseline period	2040 (2035-2056)		2060 (2057-2078)		2080 (2079-2100)	
			Average	Variation (%)	Average	Variation (%)	Average	Variation (%)
Rainfall (mm)	RCP 4.5	1569.12	1455.7	-7.23	1383.94	-11.80	1385.80	-11.68
	RCP 8.5		1329.26	-15.29	1268.79	-19.14	1268.32	-19.16

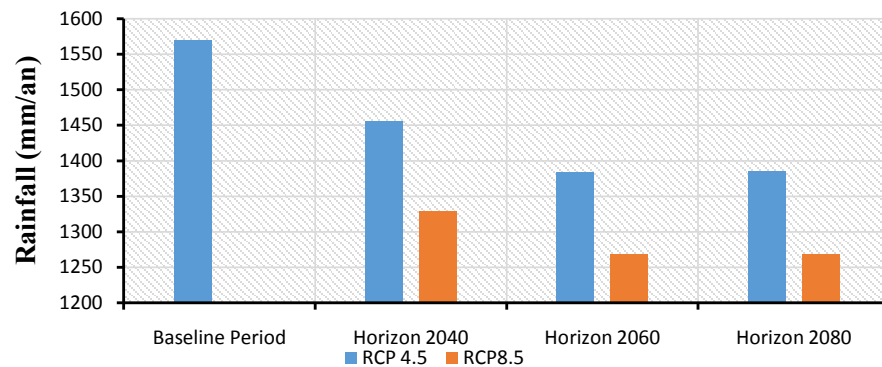


Figure 10. Evolution of annual rainfall compared to the baseline period (1960-1981).

11.80% (horizon 2060), 11.68% (horizon 2080) under the RCP 4.5 scenario and 19.14% (horizon 2060), 19.16% (horizon 2080) under the RCP 8.5 scenario. This rainfall deficit has already been observed in West Africa under the scenarios RCP 4.5 and RCP 8.5 on the watersheds of Senegal and Bandama respectively by (Mbaye et al., 2015) and (Soro et al., 2017). Also, the work of (Koua, 2014) revealed a decrease of precipitation of 10.27% by 2050 and 14.90% by 2080 on the watershed of the Buyo dam (Côte d'Ivoire) using the SWAT model and the UKMO-HadGEM1 model according to A1B scenario. Given the evolution of these variables (PET and Rainfall), we can expect that the flow of the Aghien lagoon will be impacted by both the decrease in precipitation and the increase in potential evapotranspiration.

4.2. Potential Impacts of Climate Change on Aghien Lagoon Discharge: Annual and Seasonal Discharge Evolution

RCP Scenarios 4.5 and 8.5 project a reduction in the annual flow of the lagoon until 2080 (Figure 11). Under the RCP 4.5 scenario the average annual flow would decrease by -8.33%, -10.02%, and -9.72% respectively over the different horizons (2040, 2060, and 2080). RCP 8.5 scenario forecasts a decrease average flow rate over the different horizon: -16.36% by 2040, -19.15% by 2060 and -19.22% by 2080.

Figure 12(a) and Figure 12(b) show the seasonal evolution of the lagoon discharge over the different horizons for the RCP 4.5 and RCP 8.5 scenarios compared to the observed flow over the reference period (1960-1981). We note that under both scenarios, the hydrological regime could be disrupted with respect to seasonal flow patterns and the date of occurrence of flood peaks. Indeed, the flood peaks will now appear in August and September instead of June and July over the past period (1960-1981). This situation means that the seasons could move in the 21st century. The RCP 4.5 scenario projects a decrease in the lagoon flow during the long dry season (December to April) of 42% and a decrease during the long rainy season (May to July) of 57%. As for the RCP 8.5 scenario, it predicts a decrease in flow of 44% in the dry season (December to April). It also projects a decrease in the flow of the lagoon of 64% in rainy season

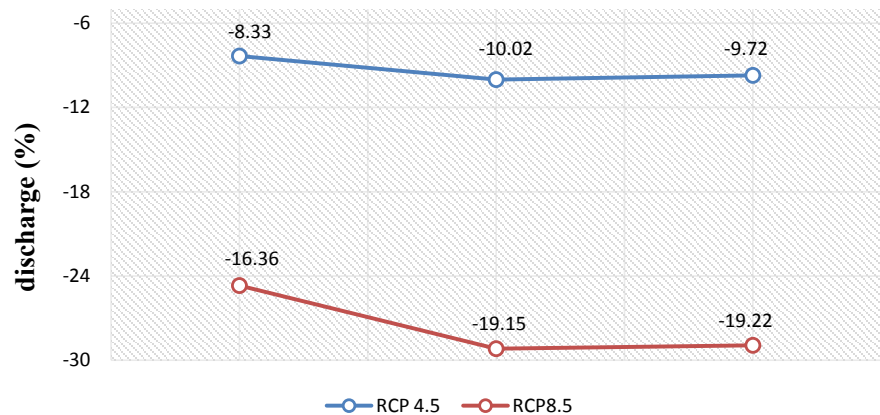


Figure 11. Evolution of the annual discharge of the Aghien lagoon under the RCP 4.5 and RCP 8.5 scenario compared to the baseline period (1960-1981).

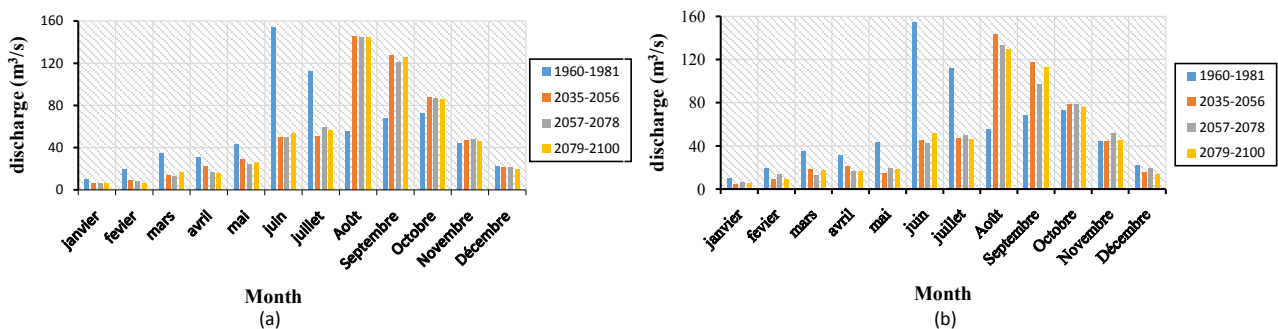


Figure 12. (a) Seasonal evolution of the discharge (compared to the reference period 1960-1981) of the Aghien lagoon under scenarios RCP 4.5; (b) Seasonal evolution of the discharge (compared to the reference period 1960-1981) of the Aghien lagoon under scenarios RCP 8.5.

(May to July). Both scenarios predict a greater increase in flow (more than 80%) in August and September during the short dry season and a slight increase in flow (more than 20%) in October and November during the short rainy season.

The discharge of the Aghien lagoon would decrease by an average of 9.42% under the RCP 4.5 scenario and would also decrease by an average of 18.24% under the RCP 8.5 scenario. These results are in agreement with those of (Ardoin-Bardin, 2004) in the watersheds of Senegal, Gambia and Sassandra (Biao, 2017) in the Ouémé river basin in Benin (West Africa) (Koua, 2014) in the watershed of the Buyo dam or (Kouakou et al., 2012) in the Comoé river watershed. These authors describe a decrease in stream flows in these different basins, up to about 20% under the influence of climate change.

5. Conclusion

This study evaluates the impact of climate change on the flow of the Aghien lagoon. Six climate models (CNRM, MIROC, HadGEM2, IPSLCM5, MPI and Ec-EARTH) of the CORDEX-AFRICA project under the scenarios RCP 4.5 and RCP 8.5 were used for the assessment of the impact of climate change. The SWAT hydrological model is used to simulate the hydrological processes in the

Aghien lagoon watershed. Calibration and validation results for the Me basin showed a good performance of the SWAT model in the simulation of hydrological processes. Considering the geographical proximity and the hydrogeological, climatic and pedological similarities of the Aghien lagoon basin and the Mé watershed, the SWAT model was therefore applied with confidence on the Aghien lagoon basin to simulate the future evolutions of the PET, the precipitation and the flow of the Aghien lagoon in a context of climate change. The results indicate an increase in future PET of the order of 7% to 12% while precipitation is expected to decrease on average by more than 16% under RCP 8.5 and 10% under RCP 4.5. Like precipitation, the annual flow of the Aghien lagoon would decrease under the two RCP scenarios. The annual discharge should decrease by an average of 10% under RCP 4.5 and more than 17% under RCP 8.5. The scenarios also project a decrease in the seasonal flow of the lagoon. Under the RCP 4.5 scenario, a 42% decrease in discharge during the dry period (December to April) and 57% during the wet period (July to May) is projected. Under the RCP 8.5 scenario, a 44% decrease in flow in the dry period and 64% in the wet season is expected. However, the flow should increase by more than 80% in August and September (dry period) and by more than 20% in October and November (wet period) over the 2040, 2060 and 2080 horizons. It should be kept in mind that this is modeling that implements a hydrological model and the average of six climate models that involve uncertainties. Given these uncertainties, the results of this study are not forecasts, but projections of two possible future situations and equiprobable to the 2040, 2060 and 2080 horizons. Thus, taking into account the potential impact of climate change on the future evolution of the Aghien lagoon will reinforce the planning and management policy of this water resource, which will have to be adjusted according to observed or foreseeable uses.

Acknowledgements

This reflection received financial support from the ERASMUS MUNDUS program through the KITE (Knowledge Integration and Transparency in Education) mobility project. All our gratitude to the authorities of this program. We would like to express our gratitude to Professor Séverin Pistre, professor of hydrogeology at the University of Montpellier, my academic supervisor of KITE program for his constructive suggestions and as well its collaborators who gave me the datasets that made this study possible. Finally, we would like to pay a final tribute to the professors Jourda Jean Patrice and KouaméKan of the Félix Houphouët Boigny University who agreed respectively to be Director and co-director of my thesis project.

Conflicts of Interest

The authors declare no conflicts of interest regarding the publication of this paper.

References

Abdelkrim, B. S. (2013). *Vulnérabilité et Adaptation Aux Changements Climatiques Dans*

- les Oasis de la Région de Tafilalet-Maroc*. Ph.D. Thesis, Marrakech, Maroc: Université Cadi Ayyad.
- Anoh, K. A. (2014). *Apport d'un SIG et du modèle agrohydrologique SWAT dans la gestion durable des ressources en eau du bassin versant du lac de Taabo (centre de la Côte d'Ivoire)*. Thèse de Doctorat en Sciences de la Terre, option Hydrogéologie, Abidjan, Côte d'Ivoire: Université Félix Houphouët Boigny de Cocody Abidjan.
- Ardoin-Bardin, S. (2004). *Variabilité hydroclimatique et impacts sur les ressources en eau de grands bassins hydrographiques en zone soudano-sahélienne*. Thèse de Doctorat, Montpellier: l'Université de Montpellier II.
- Arnold, J. G., Srinivasan, R., & Williams, J. R. (1998). Large Area Hydrologic Modeling Assessment: Part 1 Model Development. *Journal of the American Water Resources Association*, 34, 73-89. <https://doi.org/10.1111/j.1752-1688.1998.tb05961.x>
- Atchade (2004). *Impacts de la dynamique du climat et de l'occupation des terres sur les ressources en eau du bassin versant de la rivière zou dans le Bénin méridional*. Thèse de Doctorat unique, Bénin: Géoscience de l'Environnement et Aménagement de l'Espace, Université d'Abomey-Calavi.
- Baker, N. C., & Huang, H. P. (2013). A Comparative Study of Precipitation and Evaporation between CMIP3 and CMIP5 Climate Model Ensembles in Semiarid Regions. *Journal of Climate*, 27, 3731-3749. <https://doi.org/10.1175/JCLI-D-13-00398.1>
- Biao, E. I. (2017). Assessing the Impacts of Climate Change on River Discharge Dynamics in Oueme River Basin (Benin, West Africa). *Hydrology*, 4, 47. <https://doi.org/10.3390/hydrology4040047>
- Déqué, M. (2010). Regional Climate Simulation with a Mosaic of RCMs. *Meteorologische Zeitschrift*, 19, 259-266. <https://doi.org/10.1127/0941-2948/2010/0455>
- Ducharne, A., Théry, S., Vienne, P., Ledoux, E., Gomez, E., & Déqué, M. (2003). Influence du changement climatique sur l'hydrologie du bassin de la Seine. *Vertigo*, 4, 40. <https://doi.org/10.4000/vertigo.3845>
- Dufresne, J. L., Foujols, M. A., Denvil, S., Caubel, A., Marti, O., Aumont, O., Balkanski, Y., & Bekki, S. (2013). Climate Change Projections Using the IPSL-CM5 Earth System Model: From CMIP3 to CMIP5. *Climate Dynamics*, 40, 2123-2165. <https://doi.org/10.1007/s00382-012-1636-1>
- Ehouman, S. K., Amidou, D., Djibril, D., Noufé, B., Kamagate, B., Koffi, J., Thierry, K., Seydou, D., & Droh, L. G. (2017). Bilan des apports liquides des rivières Bété et Djibi à la lagune aghien (Côte d'Ivoire). *American Journal of Innovative Research and Applied Sciences*, 6, 86-99.
- Goula, B. T. A., Savané, I., Konan, B., Fadika, V., & Kouadio, G. B. (2006). Impact de la variabilité climatique sur les ressources hydriques des bassins de N'Zo et N'Zi en Côte d'Ivoire (Afrique tropicale humide). *Vertigo, la revue électronique en sciences de l'environnement*, 7, 1-12. <https://doi.org/10.4000/vertigo.2038>
- Jacob, D., Bärring, L., Christensen, O. B., Christensen, J. H., Hagemann, S., Hirschi, M., Kjellström, E., Lenderink, G., Rockel, B., Schär, C., Seneviratne, S. I., Somot, S., van Ulden, A., & van den Hurk, B. (2007). An Inter-Comparison of Regional Climate Models for Europe: Design of the Experiments and Model Performance. *Climate Change*, 81, 31-52. <https://doi.org/10.1007/s10584-006-9213-4>
- Koua, T. J. (2014). *Apport de la modélisation hydrologique et des systèmes d'information géographique (SIG) dans l'étude du transfert des polluants et des impacts climatiques sur les ressources en eau: cas du bassin versant du lac de Buyo (Sud-ouest de la Côte d'Ivoire)*. Thèse de Doctorat en Sciences de la Terre, option Hydrogéologie, Abidjan, Côte d'Ivoire: Université Félix Houphouët Boigny de Cocody Abidjan.

- Kouakou, K. E., Goula, B. T. A., & Kouassi, A. M. (2012). Analyze of Climate Variability and Change Impacts on Hydro-Climate Parameters: Case Study of Côte d'Ivoire. *International Journal of Scientific and Engineering Research*, 3, 1-8.
- Mbaye, M. L., Hagemann, S., Haensler, A., Stacke, T., Gaye, A. T., & Afouda, A. (2015). Assessment of Climate Change Impact on Water Resources in the Upper Senegal Basin (West Africa). *American Journal of Climate Change*, 4, 77-93.
<https://doi.org/10.4236/ajcc.2015.41008>
- Miao, C. Y., Duan, Q. Y., Sun, Q. H., Huang, Y., Kong, D. X., Yang, T. T., Ye, A. Z., Di, Z. H., & Gong, W. (2014). *Assessment of CMIP5 Climate Models and Projected Temperature Changes over Northern Eurasia* (pp. 1-13). State Key Laboratory of Earth Surface Processes and Resource Ecology, College of Global Change and Earth System Science, Beijing Normal University, Beijing.
- N'Dri, W. K. C., Séverin, P., Jourda, J. P., & Kouamé, K. J. (2019). Application of SWAT to Estimate Water Balance in the Aghien Lagoon Basin, South-East of Côte d'Ivoire. *International Journal of Science and Research*, 8, 10.
- Neitsch, S. L., Arnold, J. G., Kiniry, J. R., & Williams, J. R. (2005). *Soil and Water Assessment Tool Theoretical Documentation, Version 2005*. Grassland, Soil and Water Research Laboratory: Agricultural Research Service.
- Ogden, F. L., Garbrecht, J., DeBarry, P. A., & Johnson, L. E., (2001). GIS and Distributed Watershed Models. II: Modules, Interfaces, and Models. *Journal of Hydrologic Engineering*, 6, 515-523. [https://doi.org/10.1061/\(ASCE\)1084-0699\(2001\)6:6\(515\)](https://doi.org/10.1061/(ASCE)1084-0699(2001)6:6(515))
- Paturol, J. E. (2014). Exercice de scénarisation hydrologique en Afrique de l'Ouest: Bassin du Bani. *Hydrological Sciences Journal*, 59, 1135-1153.
<https://doi.org/10.1080/02626667.2013.834340>
- Reynolds, C. A., Jackson, T. J., & Rawls, W. J. (1999). Estimating Available Water Content by Linking the FAO Soil Map of the World with Global Soil Profile Database and Pdo-Transfer Functions. *Water Resources Research*, 36, 3653-3662.
<https://doi.org/10.1029/2000WR900130>
- Riahi, K., Rao, S., Krey, V., Cho, C., Chirkov, V., Guenther, F., Georg, K., Nakicenovic, N., & Rafaj, P. (2011). RCP 8.5-A Scenario of Comparatively High Greenhouse Gas Emissions. *Climatic Change*, 109, 33. <https://doi.org/10.1007/s10584-011-0149-y>
- Sabrina, T. F. (2015). *Influence de la circulation atmosphérique générale sur les précipitations du Nord de l'Algérie*. Thèse de Doctorat, Algérie: de l'École Nationale Supérieure d'Hydraulique.
- Santhi, C., Arnold, J. G., Williams, J. R., Dugas, W. A., Srinivasan, R., & Hauck, L. M. (2001). Validation of the SWAT Model on a Large River Basin with Point and Non-point Sources. *Journal of the American Water Resources Association*, 37, 1169-1188.
<https://doi.org/10.1111/j.1752-1688.2001.tb03630.x>
- Scinocca, J. F., McFarlane, N. A., Lazare, M. L. J., & Plummer, D. (2008). Technical Note: The CCCma Third Generation AGCM and Its Extension into the Middle Atmosphere. *Atmospheric Chemistry and Physics Impact*, 8, 7055-7074.
<https://doi.org/10.5194/acp-8-7055-2008>
- Servat, E., Paturol, J. E., Kouamé, B., Travaglio, M., Ouedraogo, M., Boyer, J. F., Lubès-Niel, H., Fritsch, J. M., Masson, J. M., & Marieu, B. (1998). Identification, caractérisation et conséquences d'une variabilité hydrologique en Afrique de l'Ouest et Centrale. *International Association of Hydrological Sciences Journal*, 252, 323-337.
- Soro, G. E., Yao, A. B., Kouamé, Y. M., & Goula, B. T. A. (2017). Climate Change and Its Impacts on Water Resources in the Bandama Basin, Côte d'Ivoire. *Hydrology*, 4, 18.
<https://doi.org/10.3390/hydrology4010018>

Van Vuuren, D., Edmonds, J., Kainuma, M., Riahi, K., Thomson, A., Hibbard, K., Hurtt, G., Kram, T., Krey, V., & Lamarque, J. F. (2011). The Representative Concentration Pathways: An Overview. *Climatic Change*, *109*, 5-31.

<https://doi.org/10.1007/s10584-011-0148-z>