



HAL
open science

Use of short message service in at-home COVID-19 patient management

Paul Loubet, Christian Czeschan, Matthieu Sintes, Albert Sotto, Didier Laureillard

► **To cite this version:**

Paul Loubet, Christian Czeschan, Matthieu Sintes, Albert Sotto, Didier Laureillard. Use of short message service in at-home COVID-19 patient management. BMC Medicine, 2020, 18, pp.391. 10.1186/s12916-020-01863-9 . hal-03274536

HAL Id: hal-03274536

<https://hal.umontpellier.fr/hal-03274536>

Submitted on 30 Jun 2021

HAL is a multi-disciplinary open access archive for the deposit and dissemination of scientific research documents, whether they are published or not. The documents may come from teaching and research institutions in France or abroad, or from public or private research centers.

L'archive ouverte pluridisciplinaire **HAL**, est destinée au dépôt et à la diffusion de documents scientifiques de niveau recherche, publiés ou non, émanant des établissements d'enseignement et de recherche français ou étrangers, des laboratoires publics ou privés.



Distributed under a Creative Commons Attribution| 4.0 International License

CORRESPONDENCE

Open Access

Use of short message service in at-home COVID-19 patient management



Paul Loubet^{1,2*} , Christian Czeschan³, Matthieu Sintès³, Albert Sotto^{1,2} and Didier Laureillard^{1,4}

Abstract

Background: Mobile health innovations are well adapted for ambulatory coronavirus disease 2019 (COVID-19) patients who risk clinical deterioration at home during the second week of illness.

Methods: A short message service (SMS) communication program was implemented by French physicians to monitor COVID-19 patients after discharge from outpatient or emergency care. The aim of the SMS tracking is to advise patients about their need for medical reassessment if reporting worsening of COVID-19 symptoms. A follow-up via SMS to all confirmed positive patients in the Nîmes area (France) was established. Every morning, patients received four follow-up questions. Daily responses were converted to green, orange or red trees, analysed in real time by physicians. “Red” patients were called immediately to check their condition and organise transfer to hospital if needed. “Orange” patients were called within two hours to verify whether the specific instructions following the SMS had been followed.

Results: From March 21 to June 30, 2020, 1007 patients agreed to sign up to the SMS tracking, 62% were women and the mean age was 41.5 years (standard deviation (SD) 16.0). During follow-up, 649 (64%) became “orange” and 69 (7%) “red”. Ten patients were directly admitted to the Infectious Diseases Department during their follow-up due to clinical worsening, all but one as a result of SMS alerts and subsequent telephone assessment by physicians.

Conclusion: SMS tracking platforms could be useful as an early warning system to refer patients with worsening clinical status to hospital-based care or additional clinician advice.

Keywords: Short message service, COVID-19, Follow-up, Outpatients

Background

The first non-imported coronavirus disease 2019 (COVID-19) cases were reported in France on February 24, 2020 [1], and the first detected case in the Gard department, south-eastern France, was hospitalised in the Infectious Diseases Department (IDD) of Nîmes University Hospital (CHU Caremeau) on March 2, 2020.

At that time, the diagnostic strategy was to screen all patients with symptoms suggestive of COVID-19 and close contacts of confirmed COVID-19 patients. Screening

was performed in the “Ambulatory COVID-19 Screening Centre” and the Emergency Department of the hospital, whereby suspected patients underwent clinical examination and reverse transcriptase polymerase chain reaction (RT-PCR assay) for detecting severe acute respiratory syndrome coronavirus 2 (SARS-CoV-2) on nasopharyngeal samples. Some reports describe clinical deterioration during the second week of illness [2]; thus, follow-up of non-hospitalised, confirmed cases was considered essential. The national lockdown and the risk of transmission made face-to-face consultations logistically difficult.

Methods

We therefore offered follow-up through a short message service (SMS) to all confirmed positive outpatients and

* Correspondence: paul.loubet@chu-nimes.fr

¹Department of Infectious and Tropical Diseases, CHU Nîmes, Univ Montpellier, 1 Place du Pr Robert Debré, 30029 Nîmes Cedex 9, France

²Inserm U1047, University of Montpellier, Nîmes, France

Full list of author information is available at the end of the article



© The Author(s). 2020 **Open Access** This article is licensed under a Creative Commons Attribution 4.0 International License, which permits use, sharing, adaptation, distribution and reproduction in any medium or format, as long as you give appropriate credit to the original author(s) and the source, provide a link to the Creative Commons licence, and indicate if changes were made. The images or other third party material in this article are included in the article's Creative Commons licence, unless indicated otherwise in a credit line to the material. If material is not included in the article's Creative Commons licence and your intended use is not permitted by statutory regulation or exceeds the permitted use, you will need to obtain permission directly from the copyright holder. To view a copy of this licence, visit <http://creativecommons.org/licenses/by/4.0/>. The Creative Commons Public Domain Dedication waiver (<http://creativecommons.org/publicdomain/zero/1.0/>) applies to the data made available in this article, unless otherwise stated in a credit line to the data.

discharged patients from 21 March. Physicians from the IDD developed the SMS tracking platform in collaboration with the Information Technology Department of the Nîmes University Hospital, France. All confirmed patients were called by an IDD physician who relayed the result of the RT-PCR test, explained hygiene and isolation instructions and offered inclusion in the SMS tracking platform. Consenting patients were included in the platform and follow-up started the following day for 14 days.

Every morning at 08:45, patients received the following questions:

“You’re being followed for COVID-19. As agreed, please answer these 4 questions, if possible before 10:30 am. Are you ready? If so, send [1].”

“Question 1: Has your condition worsened since yesterday? (No (Send [1]), Moderately (Send [2]), A lot (Send [3])).

Question 2: Do you have trouble breathing? (No (Send [1]), Moderately (Send [2]), Very much, while doing very little (Send [3]))

Question 3: Can you easily manage your daily life (washing, dressing, and eating)? (Yes (Send [1]), No, not at all (Send [2]))

Question 4: Do you feel able to continue home confinement? (Yes (Send [1]), No, not at all (Send [2]))

Questions were chosen to be easily understandable and to cover the different aspects of COVID-19 symptoms and the related isolation (clinical, psychological and practical). The questionnaire took less than 5 min per day to complete.

An automated reminder was sent if no response was received by 12:00. The tracking platform generated a

web page with each row representing a patient integrated in a separate dashboard distinct from patients’ medical chart. Daily responses were converted to green, orange or red trees, analysed daily in real time from 08:00 to 20:00. One infectious diseases physician dedicated 50% of their working hours to the inclusion of patients, colour checking and contacting the orange/red patients.

Patients with only “1” responses were displayed in green and received the following message: “Thank you for participating. Your condition is stable or improving. Follow-up continues at home. Continue to adhere to strict containment guidelines. See you tomorrow.”

If there was at least one “2” response but no “3”, patients were displayed in orange and the following message was sent: “Thank you for participating. It seems to us that your condition requires re-evaluation by your general practitioner today to continue follow-up at home. Please continue to adhere to the strict containment guidelines. See you tomorrow.”

If there was at least one “3” response, patients were displayed in red and the following message was sent: “Please dial 15 [emergency medical assistance service] promptly so that your condition can be assessed by an emergency and/or infectious diseases specialist.”

“Red” patients were called immediately to check the patient’s condition and organise transfer to hospital if needed. “Orange” patients were called within 2 h to see if the specific instructions following the SMS had been followed.

We were rapidly able to offer the inclusion of patients into the tracking platform to nine other ambulatory COVID-19 centres in the Gard department: two secondary general hospitals and seven general practitioner groups caring for suspected and confirmed COVID-19 patients.

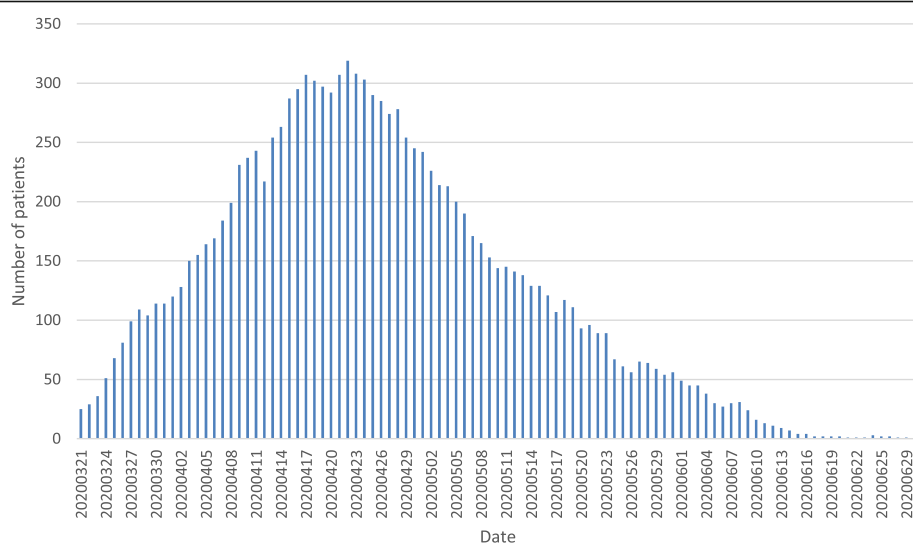


Fig. 1 Number of COVID-19 confirmed patients followed in the SMS tracking platform every day from March 21 to June 30, 2020

Table 1 Characteristics of the 1007 COVID-19 confirmed patients followed in the SMS tracking platform every day from March 21 to June 30, 2020, according to their follow-up status

	Total N = 1007	Stayed "green" n = 688	Moved to "orange" and/or "red" n = 319	p value
Percentage of women (95% CI)	62 (59–65)	60 (56–64)	64 (59–69)	0.16 ^a
Mean age, years (SD)	41.5 (5.0)	40.8 (18.2)	41.7 (15.2)	0.64 ^b
Follow-up, days (SD)	13.2 (5.4)	11.2 (5.4)	14.4 (5.2)	0.19 ^b

^aFisher's exact test^bStudent's t test

General practitioners were informed of the existence of the SMS tracking system and how to join via e-mail from the ARS (Regional Health Agency).

Results

From March 21 to June 30, 2020, five patients (all health-care workers) refused to be included and 1007 patients agreed to sign up to the SMS tracking, 62% were women and the mean age was 41.5 years (standard deviation (SD) 16.0). Of these, 994 (99%) had at least 1 day of follow-up and 850 (85%) more than 5 days of follow-up. The mean length of follow-up was 13.2 days (SD 5.4).

Figure 1 displays the number of people who used the SMS system at any point during the study period.

During follow-up, 649 (64%) became "orange" and 69 (7%) "red", of whom 30 progressed from "orange" to "red" and 39 from "green" to "red". We found no differences in age and sex between the 688 patients who became red or orange (64% of women, mean age 41.7 years, SD 15.2) and those who stayed green (60% of women, mean age 40.8 years, SD 18.2) (Table 1).

Ten patients were directly admitted to the IDD during their follow-up due to clinical worsening. Nine were evaluated as "orange" and one as "red". Admission resulted from SMS alerts and subsequent telephone assessment by physicians. The mean time from SMS tracking inclusion and hospital admission was 3 days (SD 0.5).

Discussion

The main limitation of our study is that the impact assessment of our SMS tracking platform was not possible because we were unable to create a control group due to the high participation rate and the early launch of the platform in the epidemic, without data for the cases that occurred prior to the launch.

Mobile health interventions, including SMS, increase access to care and enhance the efficiency of health service delivery in different conditions [3–5]. Patients with moderate COVID-19 disease can often isolate and be monitored at home to avoid overcrowding in healthcare facilities and save hospital beds for more severe cases. SMS, compared to traditional phone call,

provides low cost, instant transmission of information and better accessibility compared to phone apps, especially in older patients who are particularly affected by the severe forms of COVID-19.

Most mobile health interventions in the context of COVID-19 have been developed for screening patients (self-reported symptoms tracking app in healthy volunteers may help identify incidence of the disease, as well as novel symptoms [6, 7]) or to help contact tracing.

Conclusion

We share here one example of a physician-monitored SMS to connect with patients with COVID-19 after discharge from outpatient or emergency care that was quickly developed and highly acceptable to patients and clinicians. SMS tracking platforms could be useful as an early warning system to refer patients with worsening clinical status to hospital-based care or additional clinician advice.

Abbreviations

COVID-19: Coronavirus disease 2019; IDD: Infectious Diseases Department; RT-PCR: Reverse transcriptase polymerase chain reaction; SARS-CoV-2: Severe acute respiratory syndrome coronavirus 2; SMS: Short message service

Acknowledgements

We thank Sarah Kabani for her editing assistance.

Authors' contributions

PL, DL and AS conceptualised the tracking platform. CC and MS created the tracking platform. PL, DL and AS wrote the report. All authors approved the final version of the manuscript.

Funding

The current work received no funding.

Availability of data and materials

Data are available upon reasonable request to the corresponding author.

Ethics approval and consent to participate

This study was approved by the institutional review boards of the University Hospital of Nîmes, France (20-04-10). All included patients gave their consent to be included in the SMS tracking platform.

Consent for publication

Not applicable

Competing interests

PL has received personal fees and non-financial support from Pfizer and Sanofi Pasteur outside the submitted work. CC, MS, AS and DL declared no conflict of interest.

Author details

¹Department of Infectious and Tropical Diseases, CHU Nîmes, Univ Montpellier, 1 Place du Pr Robert Debré, 30029 Nîmes Cedex 9, France.

²Inserm U1047, University of Montpellier, Nîmes, France. ³Information Technology Department, CHU Nîmes, Univ Montpellier, Nîmes, France.

⁴Pathogenesis and control of Chronic Infections, Inserm, Etablissement Français du Sang, University of Montpellier, Montpellier, France.

Received: 19 May 2020 Accepted: 19 November 2020

Published online: 16 December 2020

References

1. Infection au nouveau Coronavirus (SARS-CoV-2), COVID-19, France et Monde. Available from: <https://www.santepubliquefrance.fr/dossiers/coronavirus-covid-19>.
2. Huang C, Wang Y, Li X, Ren L, Zhao J, Hu Y, et al. Clinical features of patients infected with 2019 novel coronavirus in Wuhan, China. *Lancet*. 2020;395:497–506.
3. Dobson R, Whittaker R, Jiang Y, Maddison R, Shepherd M, McNamara C, et al. Effectiveness of text message based, diabetes self management support programme (SMS4BG): two arm, parallel randomised controlled trial. *BMJ*. 2018;361:k1959.
4. van der Kop ML, Muhula S, Nagide PI, Thabane L, Gelmon L, Awiti PO, et al. Effect of an interactive text-messaging service on patient retention during the first year of HIV care in Kenya (WeITel Retain): an open-label, randomised parallel-group study. *Lancet Public Health*. 2018;3:e143–52.
5. Free C, Knight R, Robertson S, Whittaker R, Edwards P, Zhou W, et al. Smoking cessation support delivered via mobile phone text messaging (txt2stop): a single-blind, randomised trial. *Lancet*. 2011;378:49–55.
6. Menni C, Valdes AM, Freidin MB, Sudre CH, Nguyen LH, Drew DA, et al. Real-time tracking of self-reported symptoms to predict potential COVID-19. *Nat Med*. 2020;26:1037–40.
7. Zens M, Brammertz A, Herpich J, Südkamp N, Hinterseer M. App-based tracking of self-reported COVID-19 symptoms: analysis of questionnaire data. *J Med Internet Res*. 2020;22:e21956.

Publisher's Note

Springer Nature remains neutral with regard to jurisdictional claims in published maps and institutional affiliations.

Ready to submit your research? Choose BMC and benefit from:

- fast, convenient online submission
- thorough peer review by experienced researchers in your field
- rapid publication on acceptance
- support for research data, including large and complex data types
- gold Open Access which fosters wider collaboration and increased citations
- maximum visibility for your research: over 100M website views per year

At BMC, research is always in progress.

Learn more biomedcentral.com/submissions

