



**HAL**  
open science

## **Cost-Utility Analysis of a Dolutegravir-Based Versus Low-Dose Efavirenz-Based Regimen for the Initial Treatment of HIV-Infected Patients in Cameroon (NAMSAL ANRS 12313 Trial)**

Marwân-Al-Qays Bousmah, Marie Libérée Nishimwe, Tamara Tovar-Sanchez, Martial Lantche Wandji, Mireille Mpoudi-Etame, Gwenaëlle Maradan, Pierrette Omgba Bassega, Marie Varloteaux, Alice Montoyo, Charles Kouanfack, et al.

### ► To cite this version:

Marwân-Al-Qays Bousmah, Marie Libérée Nishimwe, Tamara Tovar-Sanchez, Martial Lantche Wandji, Mireille Mpoudi-Etame, et al.. Cost-Utility Analysis of a Dolutegravir-Based Versus Low-Dose Efavirenz-Based Regimen for the Initial Treatment of HIV-Infected Patients in Cameroon (NAMSAL ANRS 12313 Trial). *PharmacoEconomics*, 2021, 39 (3), pp.331-343. 10.1007/s40273-020-00987-3 . hal-03174666

**HAL Id: hal-03174666**

**<https://hal.umontpellier.fr/hal-03174666>**

Submitted on 19 Mar 2021

**HAL** is a multi-disciplinary open access archive for the deposit and dissemination of scientific research documents, whether they are published or not. The documents may come from teaching and research institutions in France or abroad, or from public or private research centers.

L'archive ouverte pluridisciplinaire **HAL**, est destinée au dépôt et à la diffusion de documents scientifiques de niveau recherche, publiés ou non, émanant des établissements d'enseignement et de recherche français ou étrangers, des laboratoires publics ou privés.



Distributed under a Creative Commons Attribution - NonCommercial 4.0 International License



# Cost-Utility Analysis of a Dolutegravir-Based Versus Low-Dose Efavirenz-Based Regimen for the Initial Treatment of HIV-Infected Patients in Cameroon (NAMSAL ANRS 12313 Trial)

Marwân-al-Qays Bousmah<sup>1</sup> · Marie Libérée Nishimwe<sup>1,2</sup> · Tamara Tovar-Sanchez<sup>3</sup> · Martial Lantche Wandji<sup>4</sup> · Mireille Mpoudi-Etame<sup>5</sup> · Gwenaëlle Maradan<sup>2</sup> · Pierrette Omgba Bassega<sup>6</sup> · Marie Varloteaux<sup>4</sup> · Alice Montoyo<sup>7</sup> · Charles Kouanfack<sup>4,8</sup> · Eric Delaporte<sup>3</sup> · Sylvie Boyer<sup>1</sup> For The New Antiretroviral and Monitoring Strategies in HIV-infected Adults in Low-Income Countries (NAMSAL) ANRS 12313 Study Group

Accepted: 20 November 2020 / Published online: 23 December 2020  
© The Author(s) 2020

## Abstract

**Objectives** Evidence comparing the economic and patient values of the World Health Organization's preferred (dolutegravir 50 mg [DTG]-based) and alternative (low-dose [400 mg] efavirenz [EFV400]-based) first-line antiretroviral regimens is limited. We compared patient-reported outcomes (PROs), costs, and the cost-utility of DTG- versus EFV400-based regimens in treatment-naïve HIV-1 adults in the randomised NAMSAL ANRS 12313 trial in Yaoundé, Cameroon.

**Methods** We used clinical data, PROs, and health resource use data collected in the trial's first 96 weeks (2016–2019). Quality-adjusted life-years (QALYs) were computed using utility scores obtained from the 12-item Short Form (SF-12) generic health scale. Other PROs included perceived symptoms, depression, anxiety, and stress. In the 96-week base-case analysis, we estimated the unadjusted and multivariate-adjusted (1) mean costs (in US\$, 2016 values) and QALYs/patient, (2) incremental costs and QALYs/patient, and (3) net health benefit (NHB). Outcomes were extrapolated over 5 and 10 years. Uncertainty was assessed using the cost-effectiveness acceptability curve and scenario and cost-effective price threshold analyses.

**Results** In the base-case analysis, the NHB (95% confidence interval) for the DTG-based regimen relative to the EFV400-based regimen was 0.056 (−0.037 to 0.153), corresponding to an 88% probability of DTG being cost-effective. A 10% decrease in this regimen's price (from \$5.2 to \$4.7/month) would increase its cost-effectiveness probability to 95%. When extrapolating outcomes over 5 and 10 years, the DTG-based regimen had a 100% probability of being cost-effective for a large range of cost-effectiveness thresholds.

**Conclusions** At 2020 antiretroviral drug prices, a DTG-based first-line regimen should be preferred over an EFV400-based regimen in sub-Saharan Africa.

**Trial Registration** ClinicalTrials.gov Identifier: NCT02777229.

---

A complete list of members of the NAMSAL ANRS 12313 Study Group is given in the Acknowledgements section.

---

**Supplementary Information** The online version contains supplementary material available at <https://doi.org/10.1007/s40273-020-00987-3>.

---

✉ Sylvie Boyer  
sylvie.boyer@inserm.fr

Extended author information available on the last page of the article

## 1 Introduction

Until mid-2018, the preferred first-line regimen for treating human immunodeficiency virus type 1 (HIV-1) infection in low- and middle-income countries (LMIC) was a 600 mg efavirenz (EFV)-based regimen (EFV600) [1]. However, concerns about adverse neurosensory effects of EFV600 [2], as well as the low genetic barriers of this drug—which may result in the accumulation of drug-resistance mutations in the absence of regular viral-load monitoring [3]—led to two other first-line regimens being subsequently considered. The first is based on dolutegravir (DTG) (50 mg), a new integrase inhibitor, which is superior to EFV600 in terms

## Key Points

Overall, the two first-line antiretroviral regimens recommended by the World Health Organization (i.e. dolutegravir 50 mg [DTG]-based and low-dose [400 mg] efavirenz [EFV400]-based regimens) provided similar patient-reported outcomes (including perceived symptoms, depression, anxiety, and mental and physical quality of life) over the first 96 weeks of follow-up in HIV-1-positive patients enrolled in the randomised NAMSAL ANRS 12313 trial in Cameroon.

Despite the higher risk of obesity associated with DTG, which in turn may impair quality of life, the base-case analysis over 96 weeks showed that the DTG-based regimen was the preferred first-line regimen, with a net health benefit of 0.056 (−0.037 to 0.153), corresponding to a cost-effectiveness probability of 88% at the threshold of US\$500 per quality-adjusted life-year gained.

When extrapolating the outcomes over 5 and 10 years, the cost-effectiveness of the DTG-based first-line regimen further improved, with a  $\geq 95\%$  probability of being cost-effective for a large range of cost-effectiveness thresholds (from US\$0 to US\$5147 over 10 years) thanks to both the lower virological failure risk (using the World Health Organization definition) and lower acquired drug resistance observed in the DTG arm compared with in the EFV400 arm, resulting in turn in higher long-term health benefits and lower costs.

of viral suppression and immunological recovery [3]. Additional advantages of DTG include its high genetic barrier to resistance and its availability in a low-cost fixed-dose combination (FDC). However, concerns have been raised about its safety during pre-conception and pregnancy [4] and about its tolerability, because of the associated risk of insomnia and obesity [3, 5, 6]. The second alternative is a low-dose (400 mg) EFV-based regimen (EFV400), which is non-inferior to EFV600 in terms of efficacy and has a better safety profile [7]. Moreover, it is efficient and safe in pregnant women and in patients with tuberculosis [7]. The updated World Health Organization (WHO) 2019 guidelines recommend using a DTG (50 mg)-based regimen as the preferred first-line antiretroviral therapy (ART) and an EFV400-based regimen as an alternative [8].

Conducted in Cameroon, the New Antiretroviral and Monitoring Strategies in HIV-infected Adults in Low-Income Countries (NAMSAL) ANRS 12313 trial is the first trial designed to assess the performance of these two regimens in a head-to-head comparison in HIV-infected

individuals initiating ART [9]. Primary results at 48 weeks demonstrated the non-inferiority of the DTG-based regimen [9]. Analyses at 96 weeks confirmed this result and found a lower proportion of virological failure (defined by the WHO as an HIV-RNA viral load  $> 1000$  copies/mL after adherence reinforcement) in the DTG arm (eight of 310 vs 19 of 303 in the EFV400 arm), with no observed resistance mutation to DTG (versus 17 among the 19 EFV400 failure cases) [10]. However, weight gain and incidence of obesity were significantly higher in the DTG arm.

Beyond the clinical challenges, the choice of which first-line regimen to use raises important economic questions in sub-Saharan Africa (SSA), where the prevalence of primary drug resistance continues to increase while access to viral-load monitoring and resistance testing are still limited, mainly because of their high cost [11]. In addition, taking the patient's point of view into account when assessing treatment alternatives is of particular importance [12], especially considering the concerns about DTG tolerability in terms of weight gain and obesity.

Despite these challenges, knowledge about the patient and economic values of these two regimens in SSA is limited. Although the cost-effectiveness of a DTG-based first-line regimen in this region has recently been assessed using modelling [13–15], no study has compared DTG with EFV400 while taking the patient's point of view into account.

The present study aimed to provide a comprehensive assessment comparing patient-reported outcomes (PROs), costs, and the cost-utility of the WHO's preferred DTG-based and alternative EFV400-based first-line regimens in the randomised trial NAMSAL ANRS 12313 in Yaoundé, Cameroon.

## 2 Methods

### 2.1 Trial Design, Data Collection, and Study Population

NAMSAL was conducted among 613 HIV-1 positive, treatment-naïve adults (i.e. aged  $> 18$  years) enrolled between July 2016 and August 2017 in three HIV day-care centres in Yaoundé. It was initially intended to last 48 weeks, but was extended an additional 96 weeks. The present economic evaluation was conducted using the first 96 weeks of the trial to provide evidence on the economic value of DTG- and EFV400-based first-line regimens concomitantly with the recently published clinical results at 96 weeks [10]. Full details of the trial design, procedures, analysis, and results are described elsewhere [9, 10]. Briefly, participants were randomly assigned (1:1) to receive either DTG 50 mg (DTG arm) or low-dose (i.e. 400 mg) EFV (EFV400 arm) once

daily, both combined with tenofovir disoproxil fumarate (TDF) and lamivudine (3TC).

Clinical visits were scheduled at baseline and then quarterly. Laboratory monitoring, including CD4 count and plasma viral load measurements, continued biannually until week 96 (W96). Genotypic drug-resistance testing was performed retrospectively at baseline and at the time of virological failure. Patients with virological failure were switched to a boosted protease inhibitor (bPI)-based second-line regimen, primarily based on lopinavir and darunavir.

Data on PROs were collected through face-to-face questionnaires administered to participants after the clinical visit at baseline and then quarterly. The following instruments were used: (1) the Justice index [16] complemented with 12 items on neuro-sensorial symptoms known to be associated with EFV (see the Online Resource, p. 4) [17]; (2) the short-form version of the Depression, Anxiety and Stress Scale (DASS-21) [18]; and (3) the 12-item Medical Outcomes Study Short-Form General Health Survey (MOS SF-12, 2nd version) [19]. The 21 items of the DASS-21—each response having a 4-point ordinal severity/frequency scale—enabled the construction of depression, anxiety, and stress scores (ranging from 0 to 42, with higher values corresponding to poorer outcomes). These scores were used to classify patients according to their severity of depression, anxiety, and stress, based on validated cut-offs [18]. The SF-12 enabled the computation of eight sub-scales and two aggregate scores—the physical component summary (PCS) and mental component summary (MCS)—both ranging from 0 to 100 (higher values corresponding to better health-related quality of life).

The base-case analysis was conducted using a modified per-protocol analysis ( $n = 575$ , with 275 and 300 participants in the DTG and EFV400 arms, respectively). Thirty-eight participants were excluded due to major protocol deviations, mainly related to switching from DTG to EFV600 because of pregnancy (see the flowchart in the Online Resource, p. 5). Overall, the median (interquartile range [IQR]) age of the study population was 37 (29–45) years, and 64% were women. At baseline, median (IQR) CD4 cells/mm<sup>3</sup> and viral load (log<sub>10</sub>) were 282 (151–444) and 5.3 (4.8–5.8), respectively, and 66% of patients had a viral load  $\geq 100,000$  copies/mL.

## 2.2 Outcomes

The main outcomes considered in the analysis were (1) PROs and quality-adjusted life-years (QALYs), (2) costs reflecting prices over the 2016–2020 period (expressed in US\$, 2016 values) and assessed from the perspective of the Cameroonian health system, and (3) incremental costs and QALYs. Outcomes were first measured over the first

96 weeks of follow-up based on NAMSAL data, and then extrapolated over 5 and 10 years using modelling. QALYs and costs were discounted at an annual rate of 3% [20].

The distribution of PROs per arm was described at the different follow-up time points using mean (standard deviation [SD]) or proportions (standard error [SE]). Mean or proportion differences between the two arms were assessed at each time point using independent group *t* tests and two-sample proportions tests, respectively. Median and proportion changes over time were assessed using the Wilcoxon rank sum test and the McNemar's chi-squared test, respectively. Analyses were also stratified by gender and obesity status at each time point.

For each arm, we then estimated the total number of QALYs gained and the mean number (95% confidence interval [CI]) of QALYs gained per patient over 96 weeks. The total number of QALYs gained per arm was measured as the sum of QALYs gained by each patient, computed as the time spent in a given health state weighted by its utility score. We used the MOS SF-12 scale (which has been validated in Cameroon [21]) to describe patients' health states and a mapping algorithm—developed from a sample of the general population in the United Kingdom (UK) using the standard gamble (SG) valuation technique—to obtain the corresponding preference-based health-related SF-6D utility scores [22].

We computed costs incurred from enrolment to W96 or, if follow-up time was shorter, to the last visit [23]. The following cost items were included: antiretroviral drugs (ARV), outpatient consultations (including non-routine visits), laboratory tests, concomitant drugs, and hospitalisations. For each arm, total costs were computed as the sum of all individual healthcare resources used by patients during follow-up (as reported in standardised case report forms) multiplied by their respective unit cost.

Data on unit costs were obtained using data collected prospectively in the study sites during the trial period complemented by the most recent relevant national sources for concomitant drugs and laboratory tests, and international sources for ARV (Online Resource, p. 6). In the base-case analysis, considering the most recent ARV prices (3rd quarter 2020), the monthly prices of DTG- and EFV400-based FDC regimens were \$5.2 and \$5.4 (year 2016 values), respectively [24]. All nominal unit costs were first converted to US dollars using the year-specific exchange rates [25] and then deflated in real value (base year 2016) using the annual US gross domestic product (GDP) deflator [26].

The treatment of monotone and non-monotone missing data for both costs and QALYs is described in the Online Resource (p. 7).

### 2.3 Economic Analysis

The methods employed in the economic analysis were in line with international guidelines [27, 28]. Using generalised linear models (GLM) to adjust for any imbalances in baseline characteristics, we estimated for each arm (1) the adjusted-mean costs and QALYs per patient and (2) the adjusted-incremental costs and QALYs (Online Resource, p. 8). We then calculated the net health benefit (NHB) of the DTG-based regimen relative to the EFV400-based regimen [29], assuming a cost-effectiveness threshold of \$500/QALY based on opportunity cost [30]:  $NHB = \text{incremental QALYs} - \text{incremental costs}/\$500$ .

Uncertainty was addressed using a probabilistic sensitivity analysis (PSA) based on Monte Carlo simulations. We first performed a Cholesky decomposition of the variance-covariance matrices obtained from both cost and QALY regressions. This allowed us to parametrise a multivariate normal distribution that was then used to randomly simulate 5000 draws of incremental mean costs and QALYs [29]. Based on these simulations, we computed 95% CI for adjusted-incremental costs, QALYs, and the NHB. We then calculated the probability that the DTG-based regimen was cost-effective for cost-effectiveness thresholds varying from \$0 to \$10,000/QALY, including \$500/QALY, as the proportion of bootstrap replicates with a positive NHB. The cost-effectiveness acceptability curve (CEAC) was finally obtained by plotting these probabilities on the y-axis versus the cost-effectiveness thresholds (from \$0 to \$10,000/QALY) on the x-axis [31].

Deterministic sensitivity analysis was also performed to address other types of uncertainties and specific scenarios as follows: (1) we varied the discount rate from 0 to 6%; (2) we performed an intention-to-treat analysis including all participants who received at least one dose of their assigned treatment; and (3) we considered only the subgroup of patients with high baseline viral load ( $> 100,000$  copies/mL), as they had a greater risk of virological failure.

Additionally, we performed a cost-effectiveness price threshold (CEPT) analysis to indicate which regimen would be preferred for any price combination of DTG- and EFV400-based first-line regimens.

### 2.4 Extrapolation of Health Benefits and Costs over 5 and 10 Years

We explored the implications of considering two longer time horizons (i.e. 5 and 10 years) by developing a Markov cohort model to extrapolate disease progression and outcomes beyond W96. These time horizons were chosen to take into account the medium- to long-term effects of both regimens on disease progression and on outcomes. We assumed that given the context of Cameroon (i.e. a lower-middle-income

country in SSA), current monitoring and treatment will not change greatly over these timeframes. The model structure depicted in Fig. 1 was adapted from a previous model used in high-income countries and applied in LMIC [32, 33]. It had one absorbing health state (death, whether HIV-related or not) and ten transitional health states defined according to CD4 count ranges combined with virological status (success vs failure, as defined by WHO) and treatment type (first- vs second-line). At model entry, patients were classified into one of the model health states according to their clinical outcome at W96 (Online Resource, p. 9). Depending on treatment success, patients either remained in the same health state or moved to another one, including virological failure and death. Patients on a first-line regimen who had virological failure switched to a bPI-based second-line regimen and either (1) achieved viral suppression or (2) failed to achieve viral suppression or (3) died. We assumed that patients with second-line treatment failure did not have access to third-line treatment and therefore remained in failure and eventually died.

Transition probabilities between first-line health states and from first-line to second-line health states were estimated from the intensity transition matrix, computed using transitions observed in the study population during the period from 24 to 96 weeks (Online Resource, p. 10–11). We excluded the first 24 weeks of follow-up to remove the effects of substantial immunological recovery and mortality observed in the first months after treatment initiation [9]. This enabled us to estimate transition probabilities based only on transitions observed once patients have been stabilised with ART.

Furthermore, given the relatively small number of second-line treatment observations in NAMSAL, especially in the DTG arm, we estimated second-line transition probabilities using data collected over 2010–2015 in the second-line ANRS 12169 2-LADY trial [34]. This randomised trial was mainly conducted in Yaoundé, Cameroon, to assess the effectiveness and cost-effectiveness of three alternative bPI-based second-line regimens, including the bPI-based regimens used in NAMSAL (i.e. lopinavir/ritonavir combined with abacavir + didanosine or tenofovir/emtricitabine and darunavir/ritonavir combined with tenofovir/emtricitabine) in patients with first-line ART failure [33, 34]. As the three regimens provided very similar health outcomes, the three arms were pooled and second-line transition probabilities were estimated from the intensity transition matrices observed in the sub-population of participants receiving an EFV-based first-line regimen ( $n = 181$ ).

Estimated transition probabilities were used to predict health state after W96 and until 5 and 10 years (i.e. 13 and 35 3-month cycles, respectively). Life tables were used to update probability matrices to account for the probability of death conditional on age. The model also accounted for any

excess mortality risk related to overweightness and obesity, estimated at 1.11 and 1.25, respectively [15].

For each arm and each health state, the mean cost and the mean number of QALYs per 3-month cycle were estimated using the trial data from 24 to 96 weeks. The total cost and number of QALYs per arm over 5 and 10 years were computed by adding the cumulated costs and number of QALYs obtained over the total 13 and 35 simulated cycles to the cost and number of QALYs accrued over the first 96 weeks of follow-up. We estimated the 95% CI for incremental costs, incremental QALYs, NHB, as well as CEAC using a non-parametric bootstrapping technique.

We tested the internal validity of our model by simulating a cohort receiving the EFV400-based (DTG-based) regimen (1) with the same transition probabilities as its counterpart (life-years saved were equal to 0), (2) with the same transition probabilities and QALYs per cycle and health state as its counterpart (incremental QALYs were equal to 0), and (3) with the same transition probabilities and costs per cycle and health state as its counterpart (incremental costs were equal to 0).

Analyses were performed using Stata version 14.2 and R version 3.5.0 (*msm* package).

### 3 Results

#### 3.1 Patient-Reported Outcomes

Most PROs significantly improved over time in both arms, mainly during the first 48 weeks, with no significant changes

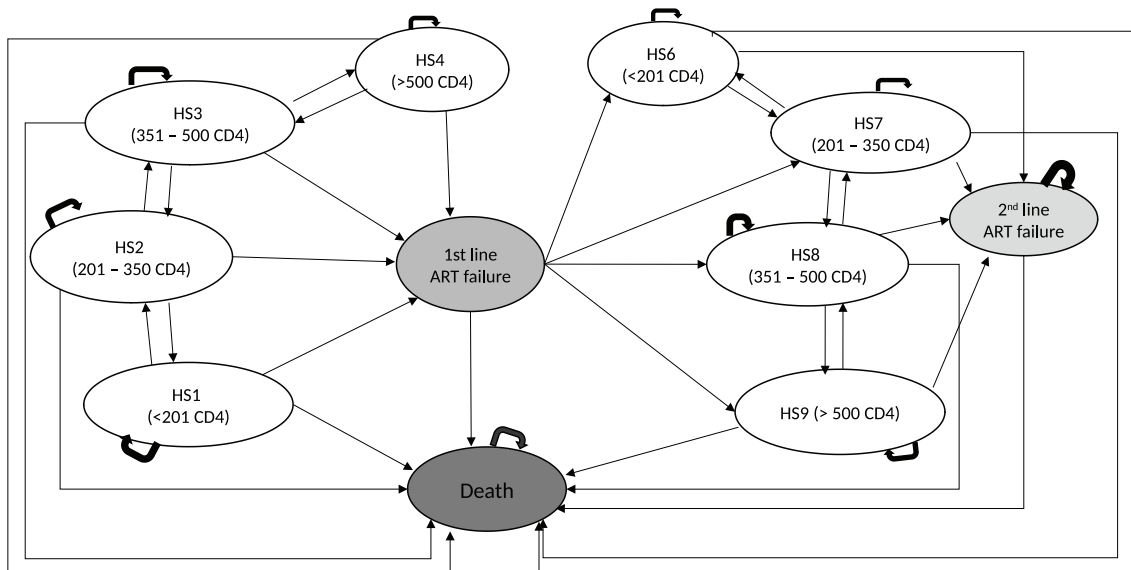
observed beyond W48 or significant differences between arms at W96 (complete results are available in the Online Resource, p. 13–15).

Between baseline and W96, PCS and MCS scores increased significantly by 11.9% ( $p < 0.0001$ ) and 8.0% ( $p = 0.0001$ ), respectively, in the DTG arm, and by 9.0% ( $p < 0.0001$ ) and 7.5% ( $p < 0.0001$ ), respectively, in the EFV400 arm (Fig. 2). This was reflected in the SF-6D utility scores, which increased by 11.6% ( $p < 0.0001$ ) in the DTG arm and by 9.2% ( $p < 0.0001$ ) in the EFV400 arm during the trial's first 96 weeks.

Over the same period, the proportions of patients with at least mild depression decreased from 22.3 to 6.2% ( $p < 0.0001$ ) in the DTG arm versus 23.1 to 6.5% ( $p < 0.0001$ ) in the EFV400 arm (Fig. 3). For those with at least mild anxiety, proportions decreased from 23.1 to 7.4% ( $p < 0.0001$ ) versus 22.1 to 10.4% ( $p = 0.0002$ ). However, the proportion of patients with at least mild stress did not decrease significantly between baseline and W96 in both arms (from 7.0 to 4.5%,  $p = 0.24$ , in the DTG arm vs 7.7 to 3.8%,  $p = 0.054$ , in the EFV400 arm).

The mean (SD) number of symptoms of at least mild severity per patient decreased from  $7.1 \pm 5.4$  at baseline to  $4.7 \pm 4.8$  at W96 ( $p < 0.0001$ ) in the DTG arm versus  $7.1 \pm 5.2$  to  $4.7 \pm 4.5$  ( $p < 0.0001$ ) in the EFV400 arm. Additionally, we did not observe a higher number of neurological symptoms in the EFV400 arm or a higher proportion of patients reporting insomnia in the DTG arm (Online Resource, p. 4 and p. 13–15).

Results from the gender- and obesity-status stratified analyses are presented in the Online Resource (p. 16–25).



**Fig. 1** State transition diagram for the Markov cohort simulation model. The oval boxes represent the different HSs in the model. Arrows denote the transitions between HSs according to immunological progression and treatment success. ART antiretroviral treatment, HS health state

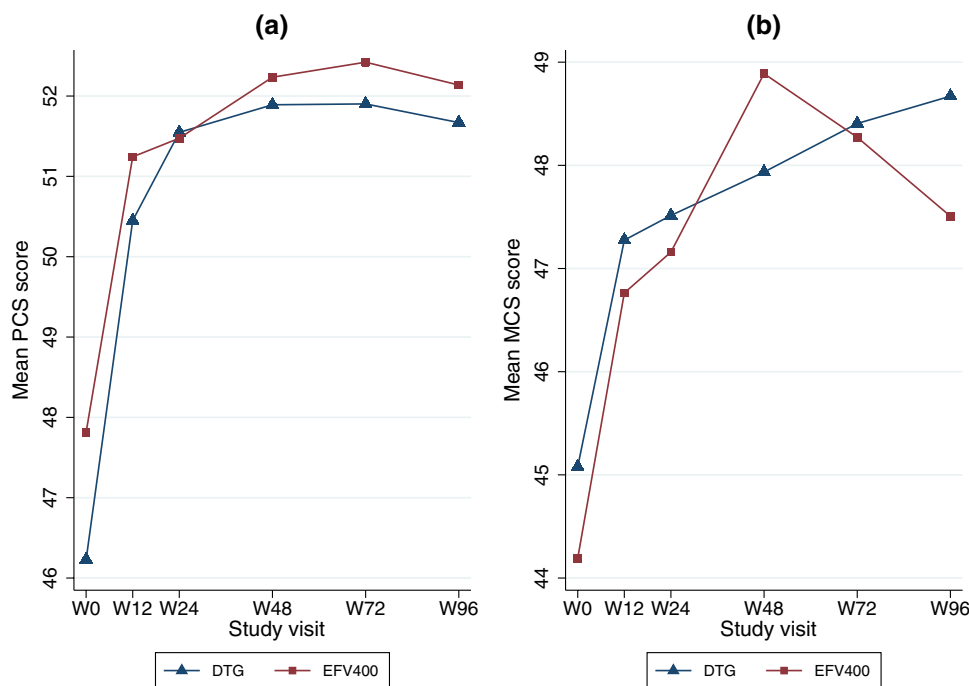
In the former, results were qualitatively similar, except for a non-significant increase over 96 weeks in the MCS score in men in the DTG arm, which might be explained by the significantly higher baseline MCS score in this subgroup than in the EFV400 arm. Results from the obesity-stratified analysis were also, in general, qualitatively similar than those for the whole sample. One notable exception observed at W96 was the slightly higher number of very severe perceived HIV symptoms in patients in the DTG arm with obesity than in those without obesity ( $0.2 \pm 0.9$  vs  $0.0 \pm 0.2$ ,  $p = 0.010$ ). Furthermore, the incidence of obesity was not significantly different between arms at baseline, but was substantially higher in the DTG arm at W96 (see the Online Resource, p. 13–15, for a full description).

### 3.2 Base-Case Cost-Effectiveness

Unadjusted mean costs (US\$, year 2016 values) and QALYs per patient accrued over 96 weeks are described in the Online Resource (p. 26) and adjusted-incremental mean (95% CI) costs and QALYs per patient in Table 1. In the base-case analysis over 96 weeks, QALYs per patient were similar for both the DTG-based and EFV400-based regimens (adjusted-incremental mean [95% CI] QALYs 0.000

[−0.034 to 0.035]). Costs for the DTG-based regimen were slightly lower but not significantly different from that for the EFV400-based regimen (adjusted-incremental mean [95% CI] costs −\$27.8 [−72.1 to 16.6]). The NHB (95% CI) was equal to 0.056 (−0.037 to 0.153), indicating that the DTG-based regimen was the most cost-effective regimen at the \$500 threshold, although it was not cost-effective at the 95% confidence level. Based on the 5000 bootstrap iterations, the probability of DTG-based regimen being cost-effective at the \$500 threshold was 88%. Furthermore, the cost-effectiveness plane (Fig. 4a) shows that 46.0% of the 5000 incremental cost-effect pairs obtained in the PSA were located in the southeast quadrant (DTG less costly and more effective, quadrant II [QII]) and were therefore cost-saving. A large proportion (43.2%) of incremental cost-effect pairs were also located in the southwest quadrant (DTG less costly and less effective, QIII), where the cost-effectiveness of DTG increased for lower cost-effectiveness thresholds. Accordingly, the probability of DTG being cost-effective increased and tended toward 90% for cost-effectiveness thresholds lower than \$500, as illustrated by the CEAC (Fig. 4b).

Increasing (or decreasing) the discount rate to 6% (0%) had little impact on the cost-effectiveness results, yielding an NHB of 0.053 (0.059), which corresponded to an 87%



**Fig. 2** Baseline and evolution of the mean Physical and Mental Component Summary (NAMSAL ANRS 12313 trial,  $n = 575$ ). Baseline and evolution between baseline and W96 of the mean PCS (a) and MCS (b) in the DTG and EFV400 arms. Both scores range from 0 to 100, with higher values corresponding to better health-related quality of life. No significant differences were found between arms at any time point for both the PCS and MCS. The PCS increased by 11.9%

( $p < 0.0001$ ) and 9.0% ( $p < 0.0001$ ) in the DTG and EFV400 arm, respectively. The MCS increased by 8.0% ( $p = 0.0001$ ) and 7.5% ( $p < 0.0001$ ) in the DTG and EFV400 arms, respectively. DTG dolutegravir, EFV400 efavirenz 400 mg, HIV human immunodeficiency virus, MCS mental component summary, NAMSAL New Antiretroviral and Monitoring Strategies in HIV-infected Adults in Low-Income Countries, PCS physical component summary, W week

(89%) probability of DTG being cost-effective. The cost-effectiveness of DTG slightly increased in the intention-to-treat analysis with an NHB of 0.055 and an 89% probability of being cost-effective. When considering the subgroup of patients with a viral load > 100,000 copies/mL at baseline, the NHB improved to 0.092 mainly due to larger cost differences, resulting in a 92% probability of DTG being cost-effective.

The CEPT analysis indicates which strategy would be preferred at the \$500 threshold for any price combination of DTG- and EFV400-based regimens (Fig. 5). The solid square represents the current (3rd quarter 2020) price combination of generic FDC, corresponding to an 88% probability of DTG being cost-effective. Results showed that the DTG FDC would be preferred with a probability of 95% if (1) its price decreased by 10% (from \$5.2 to \$4.7/month) or (2) the price of the EFV400 FDC increased by 11% (from \$5.4 to \$6.0/month), all other things being equal. Conversely, the EFV400 FDC would be preferred with a probability of 95% if (1) its price decreased by 57% (from \$5.4 to \$2.3/month) or (2) the price of the DTG FDC increased by 63% (from \$5.2 to \$8.5/month) all other things being equal. Results for the CEPT analysis at the threshold of one times the

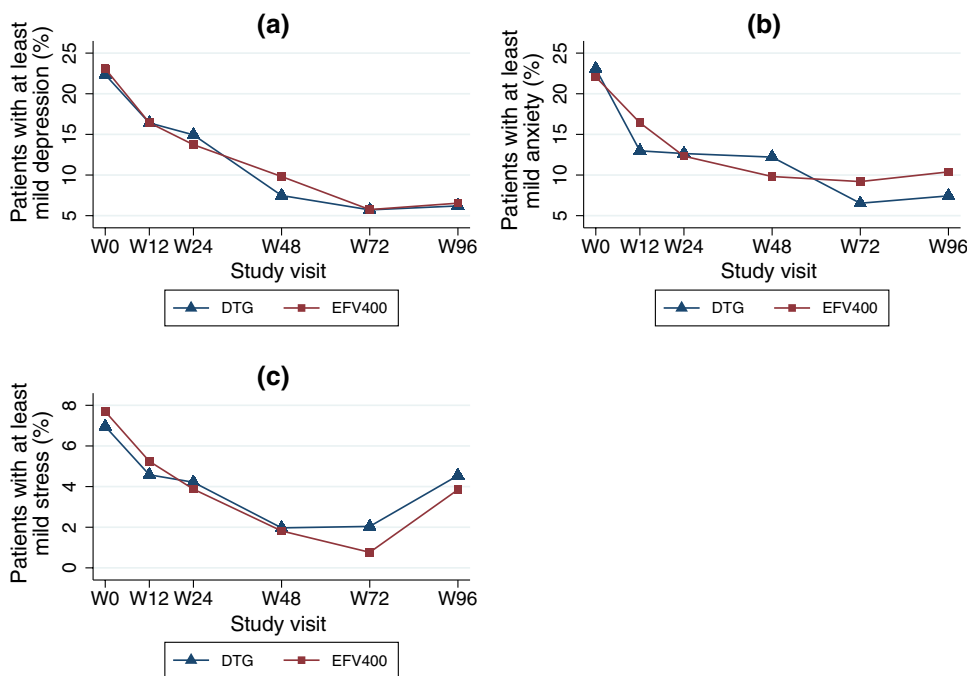
Cameroonian per capita GDP (i.e. \$1392/QALY) are presented in the Online Resource (p. 27).

### 3.3 Extrapolation of Health Benefits and Costs Beyond Week 96

Estimated transition probabilities and mean cost and number of QALYs per 3-month cycle used to extrapolate disease progression and outcomes beyond W96 are presented in the Online Resource (p. 10–12).

Health benefits were similar over 5 years (incremental QALYs [95% CI]: -0.005 [-0.061 to 0.052]), but increased progressively more in the DTG arm over 10 years (0.161 [-0.097 to 0.404]), while cost differences were larger with significantly lower costs in the DTG arm over 5 and 10 years (Table 1).

Accordingly, the NHB (95% CI) increased to 0.194 (0.123–0.261) over 5 years and to 0.484 (0.341–0.622) over 10 years, respectively, which both corresponded to a 100% probability of DTG being cost-effective at the \$500 threshold (see the Online Resource, p. 28–29, for the CEAC at 5 and 10 years).



**Fig. 3** Baseline and evolution of the proportions of patients with at least mild depression, anxiety, and stress (NAMSAL ANRS 12313 trial,  $n = 575$ ). Baseline and evolution between baseline and W96 of the proportions of patients with at least mild depression (a), mild anxiety (b), and mild stress (c), assessed using the DASS-21 scale, in the DTG and EFV400 arms. No significant differences were found between arms at any time point for all three outcomes. The decrease of the proportion between baseline and W96 of patients with at least

mild depression and mild anxiety was significant in both arms. However, the decrease in the proportion of patients with at least mild stress between baseline and W96 was not significant in the DTG arm ( $p = 0.24$ ) and in the EFV400 arm ( $p = 0.054$ ). DASS-21 Depression, Anxiety and Stress Scale—21 items, DTG dolutegravir, EFV400 efavirenz 400 mg, HIV human immunodeficiency virus, NAMSAL New Antiretroviral and Monitoring Strategies in HIV-infected Adults in Low-Income Countries, W week



**Table 1** Multivariate-adjusted QALYs, costs (US\$, year 2016 values) and cost-effectiveness (NAMSAL ANRS 12313 trial,  $n = 575$ )

	EFV400-based regimen ( $n = 300$ )	DTG-based regimen ( $n = 275$ )	Differences (DTG vs EFV400)	NHB	Prob(DTG:CE)
<b>Base-case analysis</b>					
Total cost per patient	982.8 (899.8–1065.7)	955.0 (872.0–1037.9)	–27.8 (–72.1 to 16.6)	0.056 (–0.037 to 0.153)	88%
QALYs per patient	1.367 (1.248–1.486)	1.368 (1.249–1.486)	0.000 (–0.034 to 0.035)		
<b>Alternative scenarios</b>					
Discount rate of 0%					
Total cost per patient	1016.8 (929.3–1104.3)	988.0 (900.5–1075.5)	–28.8 (–74.4 to 16.9)	0.059 (–0.037 to 0.160)	89%
QALYs per patient	1.436 (1.309–1.562)	1.437 (1.311–1.564)	0.002 (–0.034 to 0.038)		
Discount rate of 6%					
Total cost per patient	951.4 (872.5–1030.3)	924.6 (845.7–1003.5)	–26.8 (–70.0 to 16.4)	0.053 (–0.037 to 0.148)	87%
QALYs per patient	1.304 (1.192–1.416)	1.304 (1.192–1.416)	–0.001 (–0.033 to 0.032)		
<b>Intention-to-treat population (<math>n = 613</math>)</b>					
Total cost per patient	984.4 (903.2–1065.6)	954.2 (873.0–1035.4)	–30.2 (–72.0 to 11.7)	0.055 (–0.033 to 0.147)	89%
QALYs per patient	1.368 (1.256–1.481)	1.363 (1.250–1.475)	–0.005 (–0.038 to 0.028)		
<b>Patients with &gt; 100,000 copies/mL HIV RNA load only (<math>n = 379</math>)</b>					
Total cost per patient	1005.8 (942.6–1,069.0)	951.7 (888.5–1014.9)	–54.1 (–112.7 to 4.5)	0.092 (–0.031 to 0.221)	92%
QALYs per patient	1.370 (1.238–1.502)	1.354 (1.222–1.486)	–0.017 (–0.062 to 0.030)		
<b>Markov cohort simulation model</b>					
Over 5 years					
Total cost per patient	2140.4 (2106.3–2171.6)	2041.3 (2010.2–2076.3)	–99.1 (–142.3 to –51.8)	0.194 (0.123–0.261)	100%
QALYs per patient	3.440 (3.397–3.482)	3.436 (3.395–3.474)	–0.005 (–0.061 to 0.052)		
Over 10 years					
Total cost per patient	3831.1 (3710.3–3929.7)	3669.6 (3546.6–3764.9)	–161.5 (–314.6 to –5.8)	0.484 (0.341–0.622)	100%
QALYs per patient	6.270 (6.076–6.438)	6.431 (6.212–6.576)	0.161 (–0.097 to 0.404)		

Data are presented as mean values (95% confidence interval). Covariates for the multivariate-adjusted models were gender, age, CD4 count, HIV RNA level, and utilities at baseline. 95% confidence intervals for the costs and QALYs differences, the NHB, and the Prob(DTG:CE) were computed based on 5000 bootstrap replicates. Cost-effectiveness threshold: \$500 per QALY gained

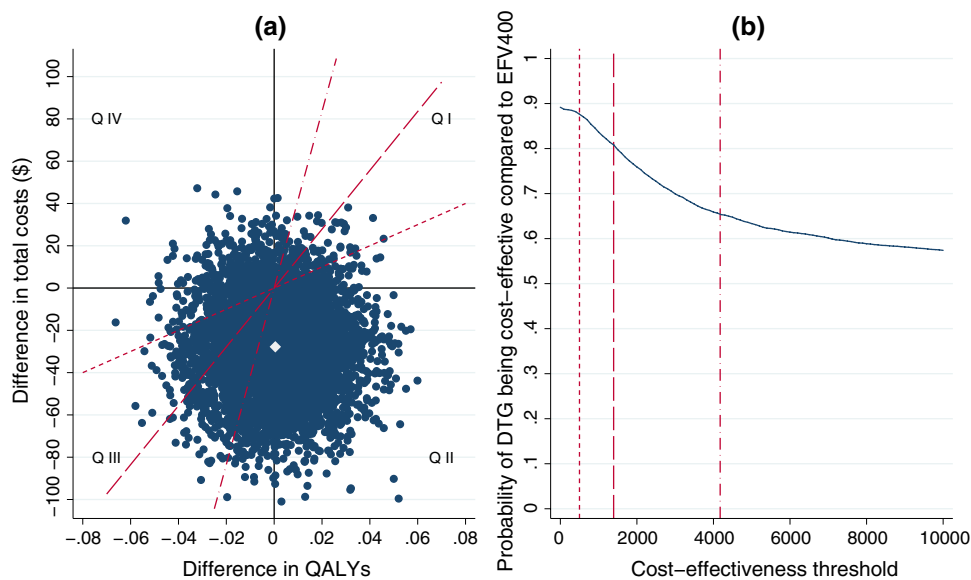
DTG dolutegravir, EFV400 efavirenz 400 mg, HIV human immunodeficiency virus, NAMSAL New Antiretroviral and Monitoring Strategies in HIV-infected Adults in Low-Income Countries, NHB net health benefit, Prob(DTG:CE) probability of DTG being cost-effective at the \$500 threshold, QALY quality-adjusted life-year

## 4 Discussion

Using individual data from the NAMSAL trial, this study provides information about PROs, costs, and the cost-effectiveness of the two first-line ART regimens recommended in the 2019 WHO guidelines: DTG 50 mg-based (preferred) and EFV 400 mg-based (alternative) regimens.

In the base-case analysis conducted over 96 weeks alongside the trial, our findings confirmed that a DTG-based regimen is the preferred first-line treatment, with a NHB (95% CI) of 0.056 (–0.037 to 0.153) at the threshold of \$500 per

QALY, corresponding to a cost-effectiveness probability of 88%. In scenario analyses, the probability of the DTG-based regimen being cost-effective varied from 87 to 92%. When extrapolating outcomes beyond the observation period to take into account the respective medium- to long-term benefits and risks of each regimen, the DTG-based regimen had a NHB of 0.194 (0.123–0.261) and 0.484 (0.341–0.622) over 5 and 10 years, respectively, and a  $\geq 95\%$  probability of being cost-effective for a large range of cost-effectiveness thresholds (from \$0 to \$5147 over 10 years).



**Fig. 4** Cost-effectiveness plane and acceptability curve of DTG- vs low-dose EFV-based regimen (NAMSAL ANRS 12313 trial). **a** Cost-effectiveness plane depicting the 5000 simulated pairs of incremental costs and QALYs of DTG vs EFV400, with the hollow diamond representing the base-case estimate ( $\Delta$ Costs = -US\$27.8;  $\Delta$ QALYs = 0.000). **b** Cost-effectiveness acceptability curve showing the probability of DTG being cost-effective compared with EFV400 at various thresholds ranging from 0 to US\$10,000/QALY. In both figures,

the short-dashed line, the long-dashed line, and the dashed-dotted line indicate the cost-effectiveness thresholds of US\$500/QALY and one (US\$1392/QALY) and three (US\$4175/QALY) times the 2016 Cameroonian GDP per capita, respectively. *DTG* dolutegravir, *EFV* efavirenz, *EFV400* efavirenz 400 mg, *GDP* gross domestic product, *HIV* human immunodeficiency virus, *NAMSAL* New Antiretroviral and Monitoring Strategies in HIV-infected Adults in Low-Income Countries, *Q* quadrant, *QALY* quality-adjusted life-year,  $\Delta$  difference

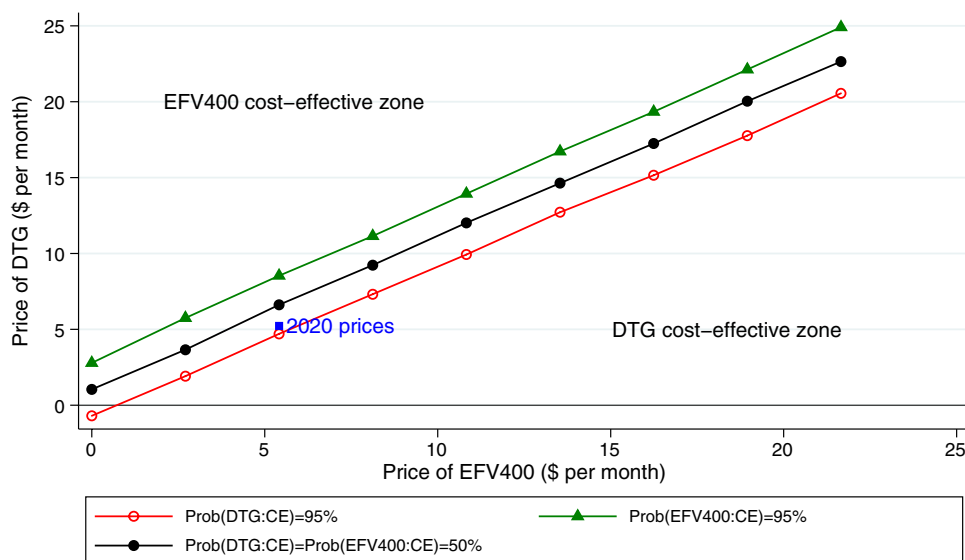
In the short term (i.e. over the first 96 weeks), the health benefits assessed in terms of QALYs were very similar in both arms, which is consistent with the results found for PROs and clinical outcomes. Overall, we observed an improvement of PROs between baseline and W96 in both arms, mainly during the first 48 weeks. The results remained qualitatively similar when stratifying the analysis by gender and obesity status. Furthermore, comparisons of clinical outcomes at W96 showed small differences in terms of efficacy and tolerance, except regarding body weight, which increased more in the DTG arm [10]. However, both the proportions of virological failure—as defined by the WHO—and acquired drug resistance were significantly lower in the DTG arm (see the Online Resource, p. 30). These better outcomes explained the greater long-term health benefits observed over 10 years in the DTG arm than in the EFV400 arm, even when taking into account the excess mortality risk associated with overweightness and obesity.

With regard to costs, the DTG-based regimen tended to be slightly less costly than its EFV400-based counterpart in the base-case analysis, mainly because of the lower rate of virological failure, translating into less frequent switching to more costly second-line treatments in the DTG arm. This explained the larger cost differences in favour of the DTG regimen observed over the medium- to long-term despite the very similar monthly prices of generic FDC

ARV (specifically \$5.2 and \$5.4, year 2016 values) for the DTG- and EFV400-based regimens, respectively. However, given that ARV price evolution has important implications with regard to cost-effectiveness results, we performed a CEPT analysis to identify which of the two regimens would have the best economic value for a large range of ARV price combinations.

Our results are in line with those of Phillips and colleagues [13–15] who showed that a DTG-based regimen would be more cost-effective than an EFV-based regimen in the majority of cases. Our study brings added value as it (1) compared the economic value of a DTG-based regimen with a low-dose EFV-based regimen, both recommended first-line ART regimens in the 2019 WHO guidelines; (2) relied on individual data for clinical outcomes and medical resource use collected in a randomised trial in a setting close to real-world healthcare delivery in SSA; and (3) investigated patient value by assessing PROs and QALYs, which are the preferred health outcome measures in economic evaluations [35].

The study does however have several limitations. First, although the EuroQoL-Five Dimensions (EQ-5D) scale is the most widely used scale to derive QALYs in economic evaluations [20], we chose the SF-12 instrument as, unlike the EQ-5D, it has already been validated in Cameroon in people living with HIV [21]. However, the utility scores



**Fig. 5** Cost-effectiveness price thresholds for DTG- and low-dose EFV-based regimens (NAMSAL ANRS 12313 trial). CE price thresholds for DTG- and EFV400-based regimens indicating which regimen would be preferred at the threshold of US\$500 per QALY gained, and for any price combination of DTG and EFV400 FDC. The price combinations on the hollow circle line would make DTG CE with a probability of 95%. Any price combination on the solid triangle line would make EFV400 CE with a probability of 95%.

associated with the health state derived from the SF-12 scale were estimated using the SG technique rather than the time trade-off (TTO) technique, which may have led to upwardly biased estimates, as suggested by studies in high-income countries [36]. Although evidence for LMIC is limited, a Ugandan study comparing SG and TTO utility assessments of HIV/AIDS-related health states did not find any upward bias in SG utilities [37]. While acknowledging the potential for upward bias in SG utilities, it is not expected to differ between arms and therefore should not influence the cost-effectiveness results. Furthermore, given the unavailability of existing utility scores for a sample of the Cameroonian population, we also acknowledge the potential for bias induced by using population norms from another context, specifically the UK [22].

Second, we extrapolated long-term clinical outcomes and costs using a Markov cohort model whose parameters were mainly estimated from the data obtained in the NAMSAL trial from 24 to 96 weeks. One limitation of this approach is its inability to simulate patient trajectories using specific individual risk factors that may affect disease progression over time. However, the first-line transition probabilities obtained after exclusion of the first 24 weeks of follow-up may be representative of the experience of patients over the medium to long term, as immunological progression and virological response are relatively stable once virological

The solid circle line depicts the price combinations for which both strategies have the same probability of being CE:  $\text{Prob}(\text{DTG:CE}) = \text{Prob}(\text{EFV400:CE}) = 50\%$ . CE cost-effective, DTG dolutegravir, EFV efavirenz, EFV400 efavirenz 400 mg, FDC fixed-dose combinations, HIV human immunodeficiency virus, NAMSAL New Antiretroviral and Monitoring Strategies in HIV-infected Adults in Low-Income Countries, Prob probability, QALY quality-adjusted life-year

success has been achieved if patients maintain good adherence to treatment [38, 39]. The latter condition is an optimistic but also conservative hypothesis, as it is likely to overestimate more the effectiveness of EFV400 than that of DTG, which is more robust to development of resistances.

Third, the use of external data from the 2-LADY trial [33] to estimate second-line transition probabilities may constitute a limitation as the characteristics of patients switching to second-line treatment may have been different in the two trials (Online Resource, p. 9). However, the 2-LADY trial was conducted in two of the three hospitals participating in NAMSAL, and the second-line treatments used in both trials were similar. Extrapolated second-line outcomes were therefore likely to be conservative, as the transition probabilities obtained using 2-LADY data likely provided conservative, yet relatively accurate estimations (the risk of treatment failure being expected to be lower in the DTG arm because of lower resistance acquired).

Fourth, our model did not account for the DTG-based regimen indirect benefit of reduced mother-to-child HIV transmission. Accordingly, overall, our modelling approach may have led to an underestimation of the DTG regimen's health benefits and, consequently, underestimation of its cost-effectiveness.

Finally, our study was conducted using data from a single trial conducted in Cameroon, which may limit the

generalisability of the results. Nevertheless, NAMSAL was conducted in a setting close to real-world healthcare delivery in LMIC with limited eligibility restrictions, allowing the inclusion of patients with a high viral load or a low CD4 cell count at baseline. It is therefore likely that the trial population reflected patients initiating first-line treatment in real-world SSA contexts.

## 5 Conclusions

This study brings new evidence about PROs in treatment-naïve HIV patients receiving either DTG- or low-dose EFV-based regimens. Despite a greater increase in the incidence of obesity in the DTG arm than in the EFV400 arm over the trial's first 96 weeks, PROs were overall similar in both study arms. Our results show that at current ARV prices (3rd quarter 2020), using a DTG-based regimen as the preferred first-line regimen may constitute the most efficient use of available resources in SSA. This finding supports the latest recommendations of the 2019 WHO guidelines.

**Acknowledgements** We thank all the patients and staff from the HIV centres who participated in the NAMSAL trial. Our thanks also to Sylvie Legac and Jules Eric Adjedi Emadoua at the ANRS Cameroon site for their support with the data collection, to Nelly Feukeng, Serge Bibeki, Martine Mbog, and Bara Nibilla, who collected the socio-economic data, to Jude Sweeney for the English revision and editing of the manuscript, and to the editor and two anonymous referees for their valuable comments. Members of the NAMSAL Study Group: TransVIHMI, University of Montpellier-IRD-INSERM, Montpellier, France: A. Ayoub, A. Agholeng, C. Butel, A. Cournil, E. Delaporte, S. Eymard-Duvernay, B. Granouillac, S. Izard, A. Lacroix, S. Leroy, M. Peeters, S. Perrineau, L. Serrano, J. Reynes, T. Tovar-Sanchez, N. Vidal. Central Hospital of Yaoundé, Yaoundé, Cameroon: P. J. Fouda, C. Kounfack, R. Mognoutou, J. Olinga, V. Omgba, S. C. Tchokonte Ngandé, B. Ymele. Military Hospital of Yaoundé, Yaoundé, Cameroon: A. Kambi, C. D. Epoupa Mpacko, M. Mpoudi-Etame, M. Fotso, R. Moukoko, T. Nké. Cité Verte Hospital, Yaoundé, Cameroon: A. Akamba, S. Lekelem, P. Omgba Bassega, S. B. Tongo Fotack, S. Ngono, M. Tanga. CREMER, Yaoundé, Cameroon: E. Ebong, G. Edoul Mbesse, M. Tsongo, E. Mpoudi-Ngolé. Cameroon ANRS site, Yaoundé, Cameroon: T. Abong, L. Ciaffi, S. Koulla-Shiro, M. Lantché Wandji, G. Manirakiza, E. D. Mimbé, D. Tetsa Tata, M. Varlo-teaux. SESSTIM, Aix-Marseille University-INSERM-IRD, Marseille, France: S. Boyer, M.-Q. Bousmah, G. Maradan, M. L. Nishimwe, B. Spire. Pharmacology-Toxicology Unit, INSERM-University of Paris Diderot, Paris, France: M. P. Lê, G. Peytavin. ANRS, Paris, France: A. Diallo, I. Fournier, A. Montoyo, N. Mercier, C. Rekeciewicz. UNI-TAID, Geneva, Switzerland: C. Perez Casa. Data Safety Monitoring Board: C. Charpentier (University Hospital Bichat, Paris, France), N. Clumeck (University Hospital Saint-Pierre, Bruxelles, Belgium), P. Flandre (INSERM, Paris, France), F. Ngom Gueye (Fann Hospital, Dakar, Senegal), L. Weiss (chair, University Hospital Pitié-Salpêtrière, Paris, France). Trial Steering Committee: A. Calmy (University Hospitals Geneva, Geneva, Switzerland), C. Kouanfack (University of Dschang, Cameroon), A. Hill (University of Liverpool, UK), J. Reynes (University of Montpellier), E. Delaporte (University of Montpellier).

**Author contributions** ED and CK designed the NAMSAL ANRS 12313 trial and ensured its overall coordination. SB designed and was responsible for the overall economic study. TTS managed the trial implementation and was responsible for clinical data management. MLW was responsible for the management and supervision of participants' clinical follow-up in the three study sites. CK, MME, POB, and MLW collected clinical data. GM was responsible for the socio-economic data collection. AM was responsible for the regulatory management and good clinical practices. MV was responsible for the general management and supervision of the trial in Cameroon. MQB built the costing database. MQB and MLN performed the economic analysis. The manuscript was drafted by MQB and SB. All authors made critical comments on the manuscript draft and approved the final version of the manuscript for submission and agreed to be responsible for all aspects of the work.

**Funding** This study was funded by Unitaid and the French National Agency for AIDS Research (ANRS).

## Declarations

**Conflict of interest** All authors report no conflict of interest in relation to this study.

**Ethics approval** The study protocol was approved by the Cameroon National Ethics Committee. All participants provided written informed consent.

**Availability of data and material** The manuscript has data included as electronic supplementary material. More complete data are available from the authors upon request.

**Code availability** Available from the authors upon reasonable request.

**Open Access** This article is licensed under a Creative Commons Attribution-NonCommercial 4.0 International License, which permits any non-commercial use, sharing, adaptation, distribution and reproduction in any medium or format, as long as you give appropriate credit to the original author(s) and the source, provide a link to the Creative Commons licence, and indicate if changes were made. The images or other third party material in this article are included in the article's Creative Commons licence, unless indicated otherwise in a credit line to the material. If material is not included in the article's Creative Commons licence and your intended use is not permitted by statutory regulation or exceeds the permitted use, you will need to obtain permission directly from the copyright holder. To view a copy of this licence, visit <http://creativecommons.org/licenses/by-nc/4.0/>.


## References

1. World Health Organization. Updated recommendations on first-line and second-line antiretroviral regimens and post-exposure prophylaxis and recommendations on early infant diagnosis of HIV [Internet]. Geneva: World Health Organization; 2018. Report No.: WHO/CDS/HIV/18.51. Available from: <http://www.who.int/hiv/pub/guidelines/ARV2018update/en/>.
2. Shubber Z, Calmy A, Andrieux-Meyer I, Vitoria M, Renaud-Théry F, Shaffer N, et al. Adverse events associated with nevirapine and efavirenz-based first-line antiretroviral therapy: a systematic review and meta-analysis. *AIDS*. 2013;27:1403–12.

3. Walmsley SL, Antela A, Clumeck N, Duiculescu D, Eberhard A, Gutiérrez F, et al. Dolutegravir plus abacavir-lamivudine for the treatment of HIV-1 infection. *N Engl J Med*. 2013;369:1807–18.
4. World Health Organization. Statement on DTG—Geneva 18 May 2018 [Internet]. Geneva: World Health Organization; 2018. Available from: [https://www.who.int/medicines/publications/drugalerts/Statement\\_on\\_DTG\\_18May\\_2018final.pdf](https://www.who.int/medicines/publications/drugalerts/Statement_on_DTG_18May_2018final.pdf).
5. Hill AM, Mitchell N, Hughes S, Pozniak AL. Risks of cardiovascular or central nervous system adverse events and immune reconstitution inflammatory syndrome, for dolutegravir versus other antiretrovirals: meta-analysis of randomized trials. *Curr Opin HIV AIDS*. 2018;13:102–11.
6. Hill A, Waters L, Pozniak A. Are new antiretroviral treatments increasing the risks of clinical obesity? *J Virus Erad*. 2019;5:41–3.
7. ENCORE1 Study Group. Efficacy of 400 mg efavirenz versus standard 600 mg dose in HIV-infected, antiretroviral-naïve adults (ENCORE1): a randomised, double-blind, placebo-controlled, non-inferiority trial. *Lancet*. 2014;383:1474–82.
8. World Health Organization. Update of recommendations on first- and second-line antiretroviral regimens [Internet]. Geneva: World Health Organization; 2019. Report No.: WHO/CDS/HIV/19.15. Available from: <https://apps.who.int/iris/bitstream/handle/10665/325892/WHO-CDS-HIV-19.15-eng.pdf>.
9. NAMSAL ANRS 12313 Study Group. Dolutegravir-based or low-dose efavirenz-based regimen for the treatment of HIV-1. *N Engl J Med*. 2019;381:816–26.
10. Calmy A, Sanchez TT, Kouanfack C, Mpoudi-Etame M, Leroy S, Perrineau S, et al. Dolutegravir-based and low-dose efavirenz-based regimen for the initial treatment of HIV-1 infection (NAMSAL): week 96 results from a two-group, multicentre, randomised, open label, phase 3 non-inferiority trial in Cameroon. *Lancet HIV*. 2020;7:e677–87.
11. Inzaule SC, Ondoa P, Peter T, Mugenyi PN, Stevens WS, de Wit TFR, et al. Affordable HIV drug-resistance testing for monitoring of antiretroviral therapy in sub-Saharan Africa. *Lancet Infect Dis*. 2016;16:e267–75.
12. Kall M, Marcellin F, Harding R, Lazarus JV, Carrieri P. Patient-reported outcomes to enhance person-centred HIV care. *Lancet HIV*. 2020;7:e59–68.
13. Phillips AN, Cambiano V, Nakagawa F, Revill P, Jordan MR, Hallett TB, et al. Cost-effectiveness of public-health policy options in the presence of pretreatment NNRTI drug resistance in sub-Saharan Africa: a modelling study. *Lancet HIV*. 2018;5:e146–54.
14. Phillips AN, Venter F, Havlir D, Pozniak A, Kuritzkes D, Wensing A, et al. Risks and benefits of dolutegravir-based antiretroviral drug regimens in sub-Saharan Africa: a modelling study. *Lancet HIV*. 2019;6:e116–27.
15. Phillips AN, Bansi-Matharu L, Venter F, Havlir D, Pozniak A, Kuritzkes DR, et al. Updated assessment of risks and benefits of dolutegravir versus efavirenz in new antiretroviral treatment initiators in sub-Saharan Africa: modelling to inform treatment guidelines. *Lancet HIV*. 2020;7:e193–200.
16. Justice AC, Holmes W, Gifford AL, Rabeneck L, Zackin R, Sinclair G, et al. Development and validation of a self-completed HIV symptom index. *J Clin Epidemiol*. 2001;54(Suppl 1):S77–90.
17. Clifford DB, Evans S, Yang Y, Acosta EP, Goodkin K, Tashima K, et al. Impact of efavirenz on neuropsychological performance and symptoms in HIV-infected individuals. *Ann Intern Med*. 2005;143:714–21.
18. Henry JD, Crawford JR. The short-form version of the Depression Anxiety Stress Scales (DASS-21): construct validity and normative data in a large non-clinical sample. *Br J Clin Psychol*. 2005;44:227–39.
19. Kosinski M, Turner-Bowker DM, Gandek B, Ware JE. User's manual for the SF-12v2 health survey. Lincoln: QualityMetric Incorporated; 2008.
20. Hunter RM, Baio G, Butt T, Morris S, Round J, Freemantle N. An educational review of the statistical issues in analysing utility data for cost-utility analysis. *Pharmacoeconomics*. 2015;33:355–66.
21. Protopopescu C, Boyer S, Marcellin F, Carrieri M-P, Koulla-Shiro S, Spire B. Validation de l'échelle de qualité de vie SF-12 chez des patients infectés par le VIH au Cameroun (enquête EVAL-ANRS 12–116). *Rev Epidemiol Sante Publique*. 2011;59:S9.
22. Brazier JE, Roberts J. The estimation of a preference-based measure of health from the SF-12. *Med Care*. 2004;42:851–9.
23. Dhaliwal I, Duflo E, Glennerster R, Tulloch C. Comparative cost-effectiveness analysis to inform policy in developing countries: a general framework with applications for education. *Education Policy in Developing Countries*. Paul Glewwe. Chicago: University of Chicago Press; 2013. p. 285–338.
24. Global Fund. Pooled Procurement Mechanism Reference Pricing: ARVs (version: quarter 3 2020) [Internet]. 2020. [https://www.theglobalfund.org/media/5813/ppm\\_arvreferencepricing\\_table\\_en.pdf](https://www.theglobalfund.org/media/5813/ppm_arvreferencepricing_table_en.pdf).
25. Organization for Economic Co-operation and Development. Exchange rates (indicator) [Internet]. 2020. <https://doi.org/10.1787/037ed317-en>.
26. Federal Reserve Bank of St. Louis. GDP implicit price deflator in United States [Internet]. 2020. Available from: <https://fred.stlouisfed.org/series/USAGDPDEFSAISMEI>.
27. Glick HA, Doshi JA, Sonnad SS, Polsky D. *Economic evaluation in clinical trials*. 2nd ed. Oxford: Oxford University Press; 2014.
28. Husereau D, Drummond M, Petrou S, Carswell C, Moher D, Greenberg D, et al. Consolidated Health Economic Evaluation Reporting Standards (CHEERS)—explanation and elaboration: a report of the ISPOR Health Economic Evaluation Publication Guidelines Good Reporting Practices Task Force. *Value Health*. 2013;16:231–50.
29. Briggs A, Sculpher M, Claxton K. *Decision modelling for health economic evaluation* [Internet]. Oxford: Oxford University Press; 2006 [cited 2020 May 21]. Available from: <https://econpapers.repec.org/bookchap/oxpobooks/9780198526629.htm>.
30. Woods B, Revill P, Sculpher M, Claxton K. Country-level cost-effectiveness thresholds: initial estimates and the need for further research. *Value Health*. 2016;19:929–35.
31. Löthgren M, Zethraeus N. Definition, interpretation and calculation of cost-effectiveness acceptability curves. *Health Econ*. 2000;9:623–30.
32. Simpson KN, Baran RW, Kirbach SE, Dietz B. Economics of switching to second-line antiretroviral therapy with lopinavir/ritonavir in Africa: estimates based on DART trial results and costs for Uganda and Kenya. *Value Health*. 2011;14:1048–54.
33. Boyer S, Nishimwe ML, Sagaon-Teyssier L, March L, Koulla-Shiro S, Bousmah M-Q, et al. Cost-effectiveness of three alternative boosted protease inhibitor-based second-line regimens in HIV-infected patients in West and Central Africa. *Pharmacoecon Open*. 2020;4:45–60.
34. Ciaffi L, Koulla-Shiro S, Sawadogo A, le Moing V, Eymard-Duvernay S, Izard S, et al. Efficacy and safety of three second-line antiretroviral regimens in HIV-infected patients in Africa. *AIDS*. 2015;29:1473–81.
35. Drummond MF, Sculpher MJ, Claxton K, Stoddart GL, Torrance GW. *Methods for the economic evaluation of health care programmes*. Oxford: Oxford University Press; 2015.
36. van Osch SMC, Wakker PP, van den Hout WB, Stiggelbout AM. Correcting biases in standard gamble and time tradeoff utilities. *Med Decis Mak*. 2004;24:511–7.
37. Medina-Lara A, Wakholi BN, Kasirye A, Munderi P, Watara C, Lalloo DG, et al. Utility assessment of HIV/AIDS-related health states in HIV-infected Ugandans. *AIDS*. 2008;22(Suppl 1):S123–130.

38. Long-Term Virological Suppression Working Group for the Collaboration of Observational HIV Epidemiological Research Europe (COHERE) in EuroCoord. Long-term virological suppression on first-line efavirenz+tenofovir+emtricitabine/lamivudine for HIV-1. *AIDS*. 2019;33:745–51.
39. Altice F, Evuarherhe O, Shina S, Carter G, Beaubrun AC. Adherence to HIV treatment regimens: systematic literature review and meta-analysis. *Patient Prefer Adherence*. 2019;13:475–90.

## Affiliations

**Marwân-al-Qays Bousmah<sup>1</sup> · Marie Libérée Nishimwe<sup>1,2</sup> · Tamara Tovar-Sanchez<sup>3</sup> · Martial Lantche Wandji<sup>4</sup> · Mireille Mpoudi-Etame<sup>5</sup> · Gwenaëlle Maradan<sup>2</sup> · Pierrette Omgba Bassega<sup>6</sup> · Marie Varloteaux<sup>4</sup> · Alice Montoyo<sup>7</sup> · Charles Kouanfack<sup>4,8</sup> · Eric Delaporte<sup>3</sup> · Sylvie Boyer<sup>1</sup>  For The New Antiretroviral and Monitoring Strategies in HIV-infected Adults in Low-Income Countries (NAMSAL) ANRS 12313 Study Group**

<sup>1</sup> INSERM, IRD, SESSTIM, Sciences Economiques & Sociales de La Santé & Traitement de l'Information Médicale, Aix-Marseille University, Marseille, France

<sup>2</sup> ORS PACA, Observatoire Régional de la Santé Provence-Alpes-Côte d'Azur, Marseille, France

<sup>3</sup> Recherches Translationnelles sur le VIH et les Maladies Infectieuses (TransVIHMI), University of Montpellier, Institut de recherche pour le développement (IRD)-INSERM, and University Hospital of Montpellier, Montpellier, France

<sup>4</sup> ANRS Cameroon Site, Central Hospital of Yaoundé, Yaoundé, Cameroon

<sup>5</sup> Military Hospital, Yaoundé, Cameroon

<sup>6</sup> Cité Verte Hospital, Yaoundé, Cameroon

<sup>7</sup> ANRS, Paris, France

<sup>8</sup> Faculty of Medicine and Pharmaceutical Sciences, University of Dshang, Dshang, Cameroon