



**HAL**  
open science

## New prehistoric avifaunas from the Gambier Group, French Polynesia

Stanislas Rigal, Patrick Kirch, Trevor Worthy

► **To cite this version:**

Stanislas Rigal, Patrick Kirch, Trevor Worthy. New prehistoric avifaunas from the Gambier Group, French Polynesia. *Palaeontologia Electronica*, 2018, 21 (3), pp.43. 10.26879/892 . hal-03113335

**HAL Id: hal-03113335**

**<https://hal.umontpellier.fr/hal-03113335>**

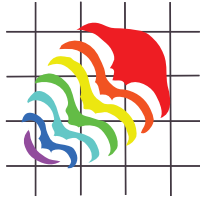
Submitted on 18 Jan 2021

**HAL** is a multi-disciplinary open access archive for the deposit and dissemination of scientific research documents, whether they are published or not. The documents may come from teaching and research institutions in France or abroad, or from public or private research centers.

L'archive ouverte pluridisciplinaire **HAL**, est destinée au dépôt et à la diffusion de documents scientifiques de niveau recherche, publiés ou non, émanant des établissements d'enseignement et de recherche français ou étrangers, des laboratoires publics ou privés.



Distributed under a Creative Commons Attribution - NonCommercial - ShareAlike 4.0 International License



## **New prehistoric avifaunas from the Gambier Group, French Polynesia**

**Stanislas Rigal, Patrick V. Kirch, and Trevor H. Worthy**

### **ABSTRACT**

This paper analyses 647 bird bones identifiable at least to family-level collected from archaeological sites in 2005, 2012 and 2014 by P. Kirch, in the Gambier Group, French Polynesia. The bones derive from Onemea Site (TAR-6) on Taravai Island, Nenega-Iti Rock Shelter (AGA-3) on Agakauitai Island and Kitchen Cave (KAM-1) on Kamaka Island. Eighteen bird species, four newly recorded in this archipelago, are represented among the bones from archaeological layers dating from human arrival in the tenth century to the late pre-European contact period in the early nineteenth century. They reveal that the original avifauna from the Gambier Group minimally included 37 species. These include six now extinct taxa, a species of *Pseudobulweria* petrel, two columbids (*Bountyphaps obsoleta*, *Ducula tihonireasini* n.sp. described herein) and three other land birds that were recorded historically. Minimally, a further six species have been extirpated from the Gambier Group. These archaeological avifaunas are strongly dominated by seabirds (89.4% Minimum Number Individuals) but differences in species representation and dominance suggest the composition of breeding seabird faunas differed between islands. Columbidae were the dominant land birds (58.9% MNI), although no species of this family currently exist on this archipelago.

Stanislas Rigal. Institut des Sciences de l'Evolution de Montpellier, Bâtiment 22, Université de Montpellier  
Place Eugène Bataillon, Cc 0665, 34095 Montpellier cedex 05, France. stanislas.rigal@ens-lyon.fr;  
formerly College of Science and Engineering, Flinders University, GPO 2100, Adelaide 5001, SA,  
Australia.

Patrick V. Kirch. University of California, Berkeley, CA 94720. kirch@berkeley.edu

Trevor H. Worthy. College of Science and Engineering, Flinders University, GPO 2100, Adelaide 5001, SA,  
Australia. trevor.worthy@flinders.edu.au

**Keywords:** Mangareva; Pacific; archaeology; prehistoric birds; procellariiforms; columbids; new species

Submission: 18 May 2018 Acceptance: 16 November 2018

---

<http://zoobank.org/2AB2225A-49DC-437F-B01D-CBFBB489C97C>

Rigal, Stanislas, Kirch, Patrick V., and Worthy, Trevor H. 2018. New prehistoric avifaunas from the Gambier Group, French Polynesia. *Palaeontologia Electronica* 21.3.4A 1-35. <https://doi.org/10.26879/892>  
[palaeo-electronica.org/content/2018/2360-gambier-group-fossil-avifaunas](http://palaeo-electronica.org/content/2018/2360-gambier-group-fossil-avifaunas)

Copyright: December 2018 Paleontological Society.

This is an open access article distributed under the terms of Attribution-NonCommercial-ShareAlike 4.0 International (CC BY-NC-SA 4.0), which permits users to copy and redistribute the material in any medium or format, provided it is not used for commercial purposes and the original author and source are credited, with indications if any changes are made.  
[creativecommons.org/licenses/by-nc-sa/4.0/](http://creativecommons.org/licenses/by-nc-sa/4.0/)

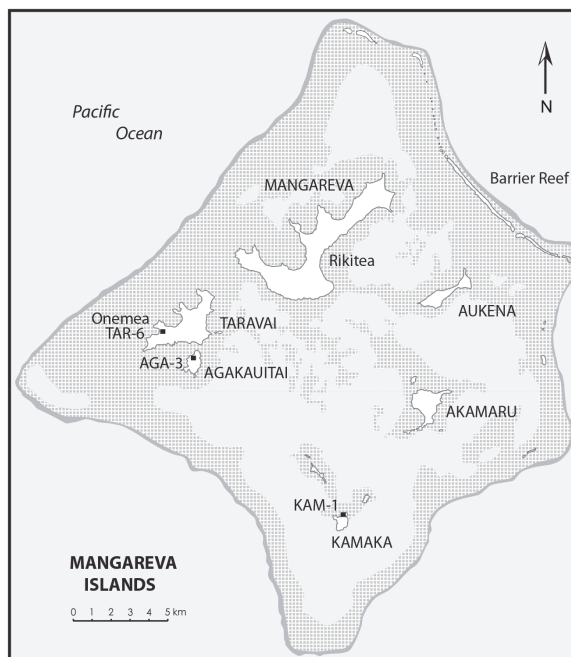
## INTRODUCTION

Extinctions, especially of birds, have often been the unintended consequence of human arrival on islands and the subsequent environmental changes resulting from human activities such as hunting, forest clearance, and habitat disturbance (Steadman, 2006; Kirch, 2007; Hume and Walters, 2012; Walther and Hume, 2016). Historical occurrence data has often documented many of these extinctions (Greenway, 1958; Fuller, 1987), but for many oceanic islands such historical records are lacking, so study of osseous remains is the only way to assess former diversity. However, due to the scarcity of suitable fossil deposits, the study of the archaeological record often provides the primary insight into the pre-human avifaunas. This is especially true for the Polynesian islands of the Pacific where the uneven geographic coverage of Pacific-wide archaeological investigations prevents biogeographers from fully appreciating human influences on the distribution of species, especially for birds (Steadman, 1997, 2006), and therefore restricts our understanding of the evolution of the fauna.

The Gambier Group lies in the southeast corner of French Polynesia, 180 km southeast of the Acteon Group in the Tuamotu Archipelago and 540 km northwest of Henderson Island, on the Tropic of Capricorn about midway between Australia and South America, see maps in Steadman (2006) and Thibault and Cibois (2017) showing the geographical context of the group within eastern Polynesia. Here we use the term Gambier Group for the entire set of 14 islands and islets that are encompassed within a barrier reef and lagoon to form a near atoll (Figure 1). The old and high (441 m) island of Mangareva (14 km<sup>2</sup>) and the 13 smaller associated islands are volcanic in origin. The Tuamotu-Gambier Archipelago owes its existence to the Pitcairn volcanic hotspot, which resulted in volcanic activity between 25 m.y.a. and 500 k.y.a. (Bonvallet et al., 1993; Hekinian, 2003). As the Pacific Plate advanced to the northwest across this hotspot, the volcanic islands of the Gambier Group were the penultimate group to be formed, between 6.0 and 4.8 m.y.a. (Bonvallet et al., 1993), with Pitcairn Island the most recent land to emerge from this volcanic activity. After Mangareva, Taravai (256 m, 5.3 km<sup>2</sup>), Akamaru (2 km<sup>2</sup>), Aukena (1.5 km<sup>2</sup>), Agakaitai (0.7 km<sup>2</sup>) and Kamaka (0.5 km<sup>2</sup>), are the five next largest islands in the Gambier Group. All of these islands including some islets (*motu*) are separated by relatively shallow water, but would

have formed continuous land during most of the Pleistocene.

Archaeological research has revealed that the human pre-European colonization of the Polynesian region occurred in two distinct phases separated by approximately 1800 years (Anderson, 2001, 2003; Kirch et al., 2010; Kirch, 2017). The first phase occurred when people of the Lapita culture expanded eastwards from the Fijian archipelago to colonize the Samoa-Tonga area between 900-800 BC (Burley et al., 2012; Kirch, 2017:88, table 4.2). The second phase involved the expansion of Polynesians out of the Samoa-Tonga homeland into the central eastern Pacific beginning around AD 950, leading to the colonisation of the Society Islands, the Marquesas, Mangareva, the Pitcairn-Henderson group and Easter Island by approximately AD 1100 (Anderson and Sinoto, 2002; Conte and Anderson, 2003; Kirch, 2017:198-200, table 7.2). The more remote Hawaiian archipelago was settled between AD 940-1130 (Athens et al., 2014), while New Zealand was not reached until AD 1140-1340 (Wilmshurst et al., 2008). Given these fairly recent dates for human arrival in the islands of eastern and marginal Polynesia, the impacts of humans on the avifaunas of the eastern Pacific are in all cases quite recent.



**FIGURE 1.** Map showing the various Mangareva Islands that comprise the Gambier Group in the eastern Pacific and locating the archaeological sites for which faunas are presented here.

With regard to the fossil avifauna of the Tuamotu Archipelago and Gambier Group, Steadman (2006: 235) wrote “The lack of bird bones from this region is a void in the avian prehistory of Polynesia that rivals that of Upolu and Savai’i, the two largest islands in Samoa.” The first insight into the avian prehistory of the Gambier Group derived from Roger Green’s pioneering archaeological research in 1959, when he excavated five sites on Aukena, Kamaka and Mangareva dating to the eleventh to seventeenth centuries AD (Weisler, 1996; Green and Weisler, 2000, 2002, 2004; Steadman and Justice, 1998; Steadman, 2006: 236; Conte and Kirch, 2004, 2008). Green’s excavations produced 215 identifiable bird bones, although only four were of native land birds (Steadman and Justice, 1998; Steadman, 2006). A new archaeological campaign launched by P. Kirch and E. Conte in 2001 and 2003 resulted in the discovery of abundant bird bones, especially in the Onemea or TAR-6 site on Taravai Island (166 identified in test pit 2 at TAR-6; Worthy and Tennyson, 2004), foreshadowing the acquisition of a significant sample informing on the former Gambier avifaunas. The rich avifauna and associated early radiocarbon dates suggested that the Onemea site was likely to have been a pioneering settlement (Conte and Kirch, 2004; Conte et al., 2004; Kirch and Conte, 2009). Further investigations at TAR-6 in 2005 greatly expanded the sample of bird bones, and taphonomic analyses of about half of the 1185 recovered bird bones or fragments showed that they derived from birds that humans had consumed (Kirch et al., 2010). Analyses of other faunal remains indicate that the earliest colonisers introduced the Pacific rat (*Rattus exulans*) and probably pig to Taravai (Swift et al., 2016). Additional field campaigns by Kirch in 2012 and 2014 expanded the initial test excavation in site AGA-3 on Agakauitai Island, and re-excavated the Kitchen Cave (KAM-1) site on Kamaka Island first dug by Green; avifaunal remains were recovered from both of these sites. Here we report on the total available avifaunas from the TAR-6, AGA-3 and KAM-1 sites, and present data on 647 bones identifiable to family-level or lower taxon levels, in total representing minimally 192 individuals.

## MATERIALS AND METHODS

### Excavated Sites

The TAR-6 site on Taravai Island is a small calcareous dune at the head of Onemea Bay, on the island’s southwest coast. Two test pits were excavated in 2003, revealing a rich concentration

of bird bones at the cultural/pre-cultural stratigraphic interface (Conte and Kirch, 2004). This led to expanded excavations in 2005, with an additional 10 units being dug, resulting in a total excavated area for the TAR-6 site of 12 m<sup>2</sup> (Kirch et al., 2010). The greatest concentration of bird bones, however, came from the initial test pit (TP) 2, and from three adjacent units (TP-5, -6, and -11) that formed a 1 by 3 m trench at the top of the dune, situated close to TP-2. In these four units, the stratigraphy consisted of a thin, organically enriched loam (Layer I) overlying a reddish-gray, charcoal-enriched cultural deposit (Layer II) about 60 cm thick, which in turn overlies a reddish-yellow aeolian sand (Layer III) generally lacking charcoal but containing a high frequency of bird bones. Although not a midden deposit, the upper part of Layer III was clearly deposited after the arrival of Polynesians on the island, as this deposit contains the bones of human-transported rats (*Rattus exulans*) and landsnails (*Allopeas gracile*) along with a few basalt flakes and pieces of worked pearl shell. Eleven radiocarbon dates were obtained from the TAR-6 site, and bracket initial human activity at the site between approximately AD 900-1100. The main cultural deposit (Layer II) accumulated between AD 1200-1400 (Kirch et al., 2010, table 1). This deposit also contains bird bones, although the density is considerably less than that in Layer III.

The Nenega-iti rockshelter (site AGA-3) lies at the base of the steep volcanic ridge on the north-western side of Agakauitai Island, about 100 m from the present shoreline. A mere overhang with a surface area of about 35 m<sup>2</sup> inside the dripline, the shelter nonetheless has well-stratified deposits with evidence of substantial occupation. A single test pit excavated in 2003 (Conte and Kirch, 2004:87-90) did not fully penetrate to the deepest occupation deposits. In 2012, an excavation of 9 m<sup>2</sup> exposed a significantly expanded sample (Kirch et al., 2015). In particular, the D9/E9/F9 trench exposed a 40-50 cm thick cultural deposit (Layer IV) with considerable numbers of bird bones near the base and at the interface with the underlying pre-cultural deposit (Layer V). Seven radiocarbon dates (Kirch et al., 2015, table 1, figure 7) indicate initial occupation beginning around AD 1300, with use of the shelter continuing up until the early post-European contact period.

The large Kitchen Cave rockshelter (KAM-1) on Kamaka Island, first excavated by Green in 1959, was re-examined by Kirch and his team in 2012, revealing well-stratified deposits in an area

adjacent to Green's original excavation. In 2014, this test pit was expanded with an additional 4 m<sup>2</sup>, for a total of 5 m<sup>2</sup>. The 2012-2014 excavations have yet to be published in full, but a series of 13 radiocarbon dates indicates initial occupation beginning around AD 1300 and more-or-less continual use of the rockshelter (probably intermittently) until European contact. The occupation sequence at KAM-1 thus closely parallels that at AGA-3.

## Methods

We examined bird bones from three sites as follows: 1185 bones from Onemea (Site 190-12-TAR-6) on Taravai Island, 386 bones from Nenega-Iti Rock Shelter (Site 190-02-AGA-3) on Agakaitai Island and 280 bones from Kitchen Cave (Site 190-04-KAM-1) on Kamaka Island, collected by P. Kirch et al. in 2005, 2012 and 2014 respectively. The bones previously reported from the Onemea and Nenega-Iti sites (Worthy and Tennyson, 2004) were re-examined and integrated in the analysis. In total, the collection comprised 647 bird bones identified to family or lower taxon levels and 1362 unidentifiable bird bone fragments. The collections are mainly curated at the Service de la Culture et du Patrimoine, overseen by the Ministry of Culture, Government of French Polynesia, Tahiti, but a small series was deposited in the Museum of New Zealand Te Papa Tongarewa, Wellington, New Zealand, to facilitate taxonomic comparisons.

Specimens were examined under magnification with a binocular microscope for anatomical features and to compare to reference specimens. Comparisons were made with modern skeletons where possible or to the material reported by Worthy and Tennyson (2004), which was identified with reference to the extensive seabird skeletal holdings in the Museum of New Zealand Te Papa Tongarewa (Wellington, New Zealand). In particular, the bones previously identified as *Pseudobulweria* species (Worthy and Tennyson 2004) were our primary reference material for this taxon.

## Abbreviations

**Anatomical.** ant, anterior; art, articular part of mandible; d, distal; juv, juvenile; p, proximal; pt, part; s, shaft; L, left; R, right; cmc, carpometacarpus; cor, coracoid; cran, cranial; dent, dentary; fem, femur; fur, furcula; hum, humerus; mand, mandible; phal, phalanx; pmx, premaxilla; quad, quadrate; rad, radius; scap, scapula; stern, sternum; tmt, tarsometatarsus; tt, tibiotarsus.

**Other.** NISP, number of individual specimens; MNI, minimum number of individuals.

**Institutions.** AM, Australian Museum, Sydney, Australia; SAM, South Australian Museum, South Australia; NMV, Museums Victoria, Victoria, Australia; NMNZ, Museum of New Zealand Te Papa Tongarewa, Wellington, New Zealand.

## Comparative Materials

Skeletons from the South Australian Museum (SAM) and bones from the 2003 archaeological campaign, previously described by Worthy and Tennyson (2004), were used to identify the bones. Reference skeletons used in the identification of these bones are listed here.

Procellariiformes: *Pterodroma heraldica* NMNZ O.24691; *Pterodroma ultima* NMNZ O.24403; *Pterodroma neglecta* NMNZ O.11423; *Pterodroma phaeopygia sandwichensis* NMNZ O.22367; *Pterodroma nigripennis* NMNZ O.13708, NMV B32632; *Pterodroma leucoptera* SAM B31271a; *Puffinus pacificus* NMNZ O.27271, NMV B12741; *Puffinus nativitatis* NMNZ O.19307; *Puffinus gavia* SAM B55367; *Pseudobulweria rostrata*, NMNZ O.23900, 24691; *Bulweria bulweria* NMNZ O.22145. Charadriiformes: *Anous stolidus* NMNZ O.24593, O.25348, NMV B22237, *Anous minutus* NMNZ O.24246, NMV B18451; *Gygis alba* NMNZ O.23894, O.23587, NMV B11025, 30907; *Chlidonias leucopterus* NMV B8969, *Chlidonias hybrida* NMV B55207, *Thalasseus bergii* NMNZ O.23879, NMV B30865; *Pluvialis fulva* NMV B20033. Phaethontidae: *Phaethon rubricauda* NMNZ O.16056, NMV B12819; *Phaethon lepturus* SAM B11476. Columbidae: *Ducula spilorrhhoa* SAM B23902; *Ducula goliath* NMNZ O.22839; *Ducula galeata* NMNZ O.26971; *Ducula lakeba* R tmt, cast of holotype, NMNZ S.38899; *Ptilinopus regina* SAM B37060, NMV B16328; *Ptilinopus magnificus* SAM B46569, NMV B20026; *Gallinula beccarii* NMV B20028; *Alopecoenas stairi* NMNZ S38223. Ardeidae: *Egretta sacra* SAM B.10999. Rallidae: *Hypotaenidia (=Gallirallus) philippensis* SAM B36299.

In addition, the columbid bones were compared with specimens from Teouma (Worthy et al., 2015), and the data reported for the Henderson Island taxa (Worthy and Wragg, 2003, 2008; Wragg and Worthy, 2006).

## Nomenclature

We followed the taxonomic nomenclature in Dickinson and Remsen (2013). The procellariids that occur in the eastern tropical Pacific Ocean fall

into three size classes; small, medium and large (e.g., Brooke, 1995a; Pyle et al., 2011).

Among small shearwaters, the Tropical Shearwater *Puffinus bailloni dichrous*, here including *P. bailloni polynesiae* of Tahiti, is recorded on islands across the Pacific from Palau and the Marianas to the Gambier Group (Thibault and Bretagnolle, 1999; del Hoyo et al., 2017) and is known to breed in the Tuamotu Archipelago (Thibault and Cibois, 2012; del Hoyo et al., 2017). However, several other small shearwaters either probably did or still do forage in the non-breeding period in the Tuamotu Archipelago, and in some cases may have formerly bred there, e.g., *Puffinus bailloni gunax* (breeding Vanuatu), Townsend's Shearwater *P. auricularis myrtae* (= *P. newelli myrtae* in del Hoyo et al. (2017); breeding on Rapa Island; BirdLife International 2017), and Little Shearwater *Puffinus assimilis kermadecensis* (Pyle et al., 2011; BirdLife International 2017; del Hoyo et al., 2017). Among larger shearwaters, the breeding range of Christmas Shearwater *Puffinus nativitatis* spans the tropical central and eastern Pacific, including the Gambier Group and the Pitcairn Islands (Brooke, 1995b; Thibault and Bretagnolle, 1999; del Hoyo et al., 2017). The Wedge-tailed Shearwater *Ardenna pacifica* is known to breed in the eastern Pacific (Marquesas) (Thibault and Cibois, 2012; del Hoyo et al., 2017), so can also be expected, if only as a visitor, in the Gambier Group.

This issue of multiple similar-sized co-occurring taxa is especially problematic among *Pterodroma* petrels. Minimally, five small taxa frequent the tropical eastern Pacific. Gould's Petrel *Pterodroma leucoptera leucoptera* (breeding on islands off the coast of New South Wales, Australia), *P. leucoptera caledonica* (breeding in New Caledonia), Collared Petrel *P. brevipes* (breeding in Fiji and Vanuatu), and Pycroft's Petrel *P. pycrofti* (breeding off Northland, in New Zealand), are all known to forage in this area (Dickinson and Remsen, 2013; Rayner et al., 2016; BirdLife International, 2017). Furthermore, *P. leucoptera* has unconfirmed breeding records from the Austral Islands and further east and Black-winged Petrel *P. nigripennis*, while breeding in the southwest Pacific, has a non-breeding range in the north and eastern Pacific (BirdLife International, 2017). Thus, all these small species of *Pterodroma* could occur in the Gambier Group on occasion.

Several medium-sized *Pterodroma* species breed in the eastern tropical Pacific (Pratt et al., 1987; Brooke, 1995; Thibault and Cibois, 2017), most of which are poorly represented in compara-

tive recent skeleton collections, making specific identification of fragmentary bones difficult. These include Murphy's Petrel *Pterodroma ultima*, the Kermadec Petrel *P. neglecta*, and the slightly smaller Herald Petrel *P. heraldica*, all known to breed on islands in the southeast Tuamotu Archipelago, the Gambier Group, and the nearby Pitcairn Group (Thibault and Cibois, 2017). In addition, the Henderson Petrel *P. atrata*, while only known to breed on the Pitcairn Group (Brooke, 1995; Thibault and Cibois, 2017), is a potential vagrant to the Gambier Group. Similarly, the Phoenix Petrel *P. alba*, has a widespread breeding distribution in the eastern tropical Pacific, including the Marquesas and the Pitcairn Group (Thibault and Cibois, 2017), so vagrants to the Gambier Group would be expected. Given extinction has resulted in the loss of many breeding colonies of petrels since human colonisation, it is likely that more than one taxon each of small and medium petrels formerly bred in the Gambier Group, and certainly several would have and still do forage in the group. As noted by numerous authors, identification of petrels to genera based on skeletal elements is straightforward, but specific separation of congeneric similar-sized species, is often not possible on morphology alone (Wragg, 1995; Olson and Rasmussen, 2001; Tennyson et al., 2015). For example, Murphy and Pennoyer (1952: 1) noted that many of these species are so similar skeletally as to preclude their separation, stating "We have compared, for example, skulls of the species *neglecta*, *arminjoniana*, and *ultima* and can find no detail that would distinguish one from another." Identification is even more difficult with post cranial bones and is compounded by breakage as typifies archaeological deposits, and so specimens are often grouped into large, medium and small size groupings within genera (e.g., Murphy and Pennoyer, 1952; Walker et al., 1990; Wragg, 1995; Olson and Rasmussen, 2001; Cooper and Tennyson, 2008; Tennyson et al., 2015).

Given the diversity of similar-sized taxa either occurring or likely to have occurred in the Gambier Group region, we adopt a conservative approach and identify bones to genus and size categories as follows using the term magn. from the Latin *magnitudo* to indicate the approximate size of the bones in question without implying possible relationship, following Olson and Rasmussen (2001): *Puffinus* magn. *P. bailloni* (to include all small *Puffinus* taxa); *Pterodroma* magn. *P. leucoptera* (for small *Pterodroma* species); *P.* magn. *P. heraldica* (for mid-sized *Pterodroma* species).

## SYSTEMATIC PALAEOLOGY

Order GALLIFORMES Temminck, 1820

Family PHASIANIDAE Horsfield, 1821

Genus *GALLUS* Brisson, 1760

*Gallus gallus* (Linnaeus, 1758), Red Junglefowl

### Material

**Onemea Site (190-12-TAR-6), Taravai Is.** (Total NISP=2; MNI=2).

Layer II: TAR6-TP10-II-2-20A, 1pR cor; (NISP=1; MNI=1).

Layer III/III: TAR6-TP10-III/III-3-28A-F, 1R cor; (NISP=1; MNI=1).

**Nenega-Iti Site (190-12-AGA-3), Agakauitai Is.** (Total NISP=2; MNI=1).

Layer IV: AGA3-G9-IV3-12-1-1J, 1pL scap; (NISP=1; MNI=1).

Layer IV/V: AGA3-E9-IV/V-15-5-35, pt 1R fur; (NISP=1; MNI=1).

The domestic junglefowl was first introduced by Polynesians to widespread islands in Eastern Polynesia (Southern Cook Islands – Marquesas – Easter Island; data limited by archaeological investigation), but had gone extinct in the Gambier Group before European arrival (Green and Weisler, 2004; Thibault and Cibois, 2017). The extant population derives from a European reintroduction of junglefowl to the Gambier Group (Thibault and Cibois, 2017).

Order COLUMBIFORMES Latham, 1790

Family COLUMBIDAE Illiger, 1811

Genus *BOUNTYPHAPS* Worthy and Wragg, 2008

*Bountyphaps* sp. cf. *B. obsoleta* Worthy and Wragg, 2008 (Figure 2)

### Material

**Nenega-Iti Site (190-12-AGA-3), Agakauitai Is.** (Total NISP=1; MNI=1).

Layer IV: NMNZ S.47666, =AGA3-D9-IV4-21-5-1C, 1dR tt; (NISP=1; MNI=1).

**Kitchen Cave (190-04-KAM-1), Kamaka Is.** (Total NISP=4; MNI=2).

Layer V: KAM1-B3TP1-V-3A-B, 1dR ulna; (NISP=1; MNI=1)

Layer VI: KAM1-B3TP1-VI-4A-F, 1sL ulna, 1sL tt, 1sL tmt (NISP=3; MNI=1).

### Measurements

AGA3-D9-IV4-21-5-1C, dR tibiotarsus: distal width 8.9 mm, depth medial condyle 9.4 mm, depth of lateral condyle 8.2 mm. KAM1-B3TP1-V-3A-B, dR ulna: shaft width 3.3 mm; maximum distal width >6.2 mm (tuberculum carpale broken). KAM1-

B3TP1-VI-4A-F, distal shaft L tarsometatarsus, minimum shaft width proximal to metatarsal facet 3.85 mm.

**Comments.** The tibiotarsus NMNZ S.47666 (Figure 2) from Nenega-Iti is referred to *Bountyphaps* and tentatively to *B. obsoleta*, described from Henderson Island, as it has the following unique combination of diagnostic features of that taxon (Wragg, 2008). 1) The medial tuberosity for the proximal attachment of the retinaculum extensorium tibiotarsi (ptRET) is prominent and is separated from the condylus medialis by a distance much less than the height of the medial condyle; 2) the distal attachment point for the retinaculum extensorium tibiotarsi (dtRET) is prominent and adjacent to the pons supratendineus; 3) the lateral margin of the sulcus extensorius proximal to the pons supratendineus is rounded, not with a sharp crest; 4) the medial attachment point for the retinaculum m. fibularis (mtRMF) laterad of the sulcus extensorius is poorly marked; 5) the lateral attachment for the retinaculum m. fibularis (ltRMF) is on the lateral facies and is aligned antero-caudally rather than parallel to the shaft; 6) a small (not large) foramen penetrates the corpus cranially close to the proximal margin of the condylus lateralis; 7) the distal width across the condyles is narrower caudally than cranially; 8) the depth of the condylus medialis is greater than the distal condylar width; and 9) the epicondylaris medialis is prominent and visible in cranial view. The size of NMNZ S.47666 from Agakauitai Island, Gambier Group, is intermediate between that of the two tibiotarsi of *Bountyphaps obsoleta* described by Worthy and Wragg (2008) from Henderson Island and greater than those of *Alopecoenas* (= *Gallicolumba*) *leonpascoi* from that island (DW = 7.5-7.8 mm; Worthy and Wragg, 2003). Note, *Alopecoenas* includes taxa in the Central and Eastern Pacific formerly listed in *Gallicolumba*, so extinct species erected in this genus and from this region are hereafter placed in *Alopecoenas*. Tibiotarsi of *Alopecoenas nui* differ with a markedly prominent mtRMF (4) forming a crest up the lateral side of the sulcus extensorius just proximal to the pons supratendineus; a markedly laterally prominent ltRMF (5) forming a bulge in the lateral margin in cranial aspect and in lacking a prominent epicondylus medialis (8), in addition to their smaller size.

The dR ulna (KAM1-B3TP1-V-3A-B) from Layer V, Kitchen Cave, is referred to *Bountyphaps* sp. cf. *B. obsoleta* because it differs from other likely candidate species as follows: from species of *Ducula*, by the more widely separated papilla





**FIGURE 2.** The distal right tibiotarsus NMNZ S.47666 from Nenega-Iti that is referred to *Bountyphaps obsoleta*, in cranial (1), medial (2), caudal (3) and lateral (4) views. **Abbreviations:** dtRET, distal attachment of the retinaculum extensorium tibiotarsi; lc, condylus lateralis; ItRMF, lateral attachment of the retinaculum musculus fibularis; mc, condylus medialis; ptRET, proximal attachment of the retinaculum extensorium tibiotarsi. Scale bar equals 10 mm.

remiges; from species of *Ptilinopus*, by greater size than all except *P. magnificens* of Australia; and from most species of *Alopecoenas* by larger size. *Alopecoenas leonpascoi* of nearby Henderson Island (Worthy and Wragg, 2003), was one of the larger species in this genus, and had a much smaller and slenderer ulna (shaft width of 2.5-2.6 mm, vs 3.3 mm). Larger species than *A. leonpascoi* are known, notably *A. nui* from the Marquesas (Steadman, 1992), and provisionally from the Cook Islands (Steadman, 1997), but available descriptions do not include ulnae measurements. However, the size *A. nui* may be assessed from the recorded distal width measurements for tibiotarsi (7.6-8.4 mm), which do not differ greatly from those for *A. leonpascoi* (7.5-7.8 mm; Worthy and Wragg,

2003). Given the ulna from Kitchen Cave is much larger than those of *A. leonpascoi* (maximum DW = 4.6-4.9 and SW = 2.5-2.6 mm; Worthy and Wragg, 2003), it is unlikely to be from *A. nui*.

Three other fragmentary columbid bones derive from among burnt bone material from layer VI (KAM1-B3TP1-VI-4A-F). The ulna lacks either end, but the rebuilt shaft section distally overlaps part of the specimen KAM1-B3TP1-V-3A-B and is very similar in size and morphology. It shows that overall the ulna is slenderer than those of species of *Ducula*. The associated shaft of a tibiotarsus is smaller than the specimen referred to *Ducula* from Onemea and similar to NMNZ S.47666 referred to *Bountyphaps* from Nenega-Iti. The shaft of the left tarsometatarsus differs greatly from those of spe-



cies of *Ducula* by having an elongated mid-section. It is more like those of *Didunculus placopedetes*, e.g., L tarsometatarsus, Australian Museum AM138761, in the arrangement of the metatarsal facet and the cristae plantares medialis et lateralis, although the metatarsal facet is medially-prominent in dorsal view (not so in *D. placopedetes*) and the medial crista on the dorsal facies is farther from the medial margin. An elongate shaft also characterises species of *Alopecoenas* and the Kamaka Island specimen is within the size range of *Alopecoenas nui* (Marquesas), see Steadman (1992), but is larger than *Alopecoenas leonpascoi* (Pitcairn Group), which has a shaft width of 3.6-3.7 mm (Worthy and Wragg, 2003). However, *Bountyphaps obsoleta* (Pitcairn Group) is larger than *A. leonpascoi* and of similar size to *A. nui* and is more similar to species of *Didunculus* than other taxa (Worthy and Wragg, 2008), so while a tarsometatarsus is unknown for *B. obsoleta*, it predictably would be elongate like those of species of *Didunculus*. Moreover, while this is only a shaft fragment it has cristae-like dorsal lineae intermusculari at the level of the fossa metatarsi I, with the medial line enclosing a shallow groove between it and the facet in that fossa, which is strongly developed and protrudes medial to the shaft. In both *A. leonpascoi* and in *A. stairi*, the dorsal lineae intermusculari are much weaker and the facet in fossa metatarsi I barely projects medially (Worthy and Wragg, 2003). Given the tibiotarsus and ulna can both be referred to *Bountyphaps* with some confidence and tentatively to *B. obsoleta* from Henderson Island some 540 km distant, we consider it most parsimonious to refer the tarsometatarsus from the same site to the same taxon. We think it less likely that two relatively similar taxa would coexist in the Gambier Group, as a referral of the tarsometatarsus to *Alopecoenas nui*, otherwise known from 1500 km distant in the Marquesas would infer.

Steadman and Justice (1998), repeated in Steadman (2006), referred a humeral end of a coracoid and a shaft of a tibiotarsus from Kamaka Island to *Alopecoenas nui*, which taxon was originally described from the Marquesas, but this was before *A. leonpascoi* from the Pitcairn Group was known (Worthy and Wragg, 2003). This latter species, while slightly smaller than *A. nui*, is also relatively large for the genus and attests to a diversity of big species of *Alopecoenas* across the Central-Eastern Pacific. Moreover, *Bountyphaps obsoleta*, a similarly large taxon, also from the Pitcairn Group, but with affinities to the long-legged *Didunculus*-group (Worthy and Wragg, 2008), was also

then unknown, and so both *Alopecoenas* and *Bountyphaps*, or close relatives, could be expected in the Gambier Group, which is the nearest significant land to Henderson Island. The measurements in Steadman and Justice (1998) do not distinguish the Kamaka Island specimens from either *B. obsoleta* or *A. leonpascoi*, and these authors did not figure them. Descriptions were limited to a statement that they do not differ from those of *A. nui* and some observations of muscular lineae on the tibiotarsus shaft, which in-so-far as they can be compared, match what is seen on the bone referred above to *B. obsoleta* from Nenega-Iiti. Given, the most diagnostic columbid bone from Kamaka Island from one of these taxa that we report herein is the distal tibiotarsus, and it does not differ from that of *B. obsoleta*, we consider the bones Steadman and Justice (1998) reported are most likely of this taxon. Even if they were truly a species of *Alopecoenas*, then it is more likely that they would be from *A. leonpascoi*, given the much closer proximity (540 versus 1500 km) of its type locality on Henderson Island to the Gambier Group. Until, the specimens from Kamaka Island that Steadman and Justice (1998) referred to *A. nui* are compared with *B. obsoleta* and *A. leonpascoi*, their identification as being referable to the Marquesan species *A. nui* must be considered doubtful.

#### Genus *DUCULA* Hodgson, 1836

The following specimens are referred to a species of *Ducula* because they have the following diagnostic features (Worthy, 2001; Wragg and Worthy, 2006; Worthy and Wragg, 2008). Tarsometatarsus: 1) has similar proportions to other members of the genus; 2) the cotyla medialis in medial view is projected dorsally; 3) the medial foramen of the foramina vascularia proximalia is elongate and much larger than its lateral equivalent; 4) the foramina vascularia proximalia are widely separated by a low ridge and lie in a sulcus bound by prominent ridges; 5) the foramen vasculare proximale medialis lies close (less than the foramen width) to the medial edge of the shaft; 6) the tuberositas m. tibialis cranialis is distal to the foramen vasculare proximale medialis in the sulcus extensorius and so is close to the medial margin; 7) the lateral profile of the shaft leading to trochlea metatarsi IV is slightly concave. Tibiotarsus: 8) the medial tuberosity for the proximal attachment of the retinaculum extensorium tibiotarsi (ptRET) is prominent and is separated from the condylus medialis by a distance greater than the proximodistal height of the medial condyle; 9) the distal attachment point for the retinaculum extensorium

tibiotarsi (dtRET) is a marked prominence on the lateral side of the sulcus extensorius proximal to the pons supratendineus; 10) the lateral margin of the sulcus extensorius proximal to the pons supratendineus is bound by a sharp crest; 11) the medial attachment point for the retinaculum m. fibularis (mtRMF) laterad of the sulcus extensorius is poorly marked; 12) the lateral attachment of the retinaculum m. fibularis (ltRMF) is on the lateral facies and is aligned parallel to the shaft; 13) it lacks a foramen penetrating the corpus cranially close to the proximal margin of the condylus lateralis; 14) the distal width across the condyles is about the same caudally and cranially; 15) the depth of the condylus medialis is about equal to the distal condylar width.

The tibiotarsus and tarsometatarsus differ from those of known species of *Ducula*, so they are described as a new taxon. The remaining bones are referred to the same new species because they are of appropriate size and were found in close proximity to the above elements and no other similarly large columbid species was represented in the site.

*Ducula tihonireasini* nov. sp. (Figure 3)

zoobank.org/BF74BA36-4198-4F84-8D97-99929D504084

#### Holotype

NMNZ S.47667, field number TAR6-TP02-II-5-20, right tarsometatarsus, broken through the foramen distale and lacking all trochleae (Figure 3.1-3.4), collected by P. Kirch et al., 19 August 2003.

#### Holotype Locality

Layer II, level 5, test pit 2, Onemea Dune Site (190-12-TAR-6), Taravai Island, Gambier Group, French Polynesia (Conte and Kirch, 2004; Kirch et al., 2010).

#### Paratype

NMNZ S.47668, field number TAR6-TP11-3-19A-C, dR tibiotarsus (Figure 3.5-3.8), collected by P. Kirch et al. August 2005.

#### Paratype Locality

Layer II, level 3, test pit 11, Onemea Dune Site (190-12-TAR-6), Taravai Island, Gambier Group, French Polynesia (Kirch et al., 2010).

#### Diagnosis

A species of *Ducula* with tibiotarsi and tarsometatarsi smaller than those of the extinct *Ducula lakeba* of Fiji, *D. david* of Uvea, *D. harrisoni* of Henderson Island and the extant *D. goliath* of New

Caledonia and *D. galeata* of the Marquesas, but larger than all other species east of the Solomon Islands (Worthy, 2001; Wragg and Worthy, 2006). The tarsometatarsus is robust with similar proportions to that of *D. david* from Uvea (Balouet and Olson, 1987), as defined by maximum shaft width across the articular facet in fossa metatarsi I as a proportion of length, and is more robust than those of other large species such as *D. galeata*, *D. harrisoni* and *D. lakeba* (Worthy, 2001; Worthy and Wragg, 2008). The fossa parahypotarsalis medialis separated from the fossa metatarsi I. Dorsal facies with very well marked lineae intermusculari, one medially, one laterally and one intermediate.

#### Etymology

The species is named after the late Tihoni Reasin, who was the owner of Kamaka Island. Tihoni, as a 14-year old, worked with Roger Green in the first excavation of Kitchen Cave. He then greatly assisted PV Kirch and his team in all of their field trips to Mangareva, and especially during the 2012 and 2014 re-excavations at Kitchen Cave, when he hosted them on Kamaka.

#### Stratigraphy/Age

An archaeological deposit deposited between AD 950 and AD 1350 (Kirch et al., 2010).

#### Referred Material

**Onemea Dune Site (190-12-TAR-6).** Total, including types, NISP= 6; MNI = 3.

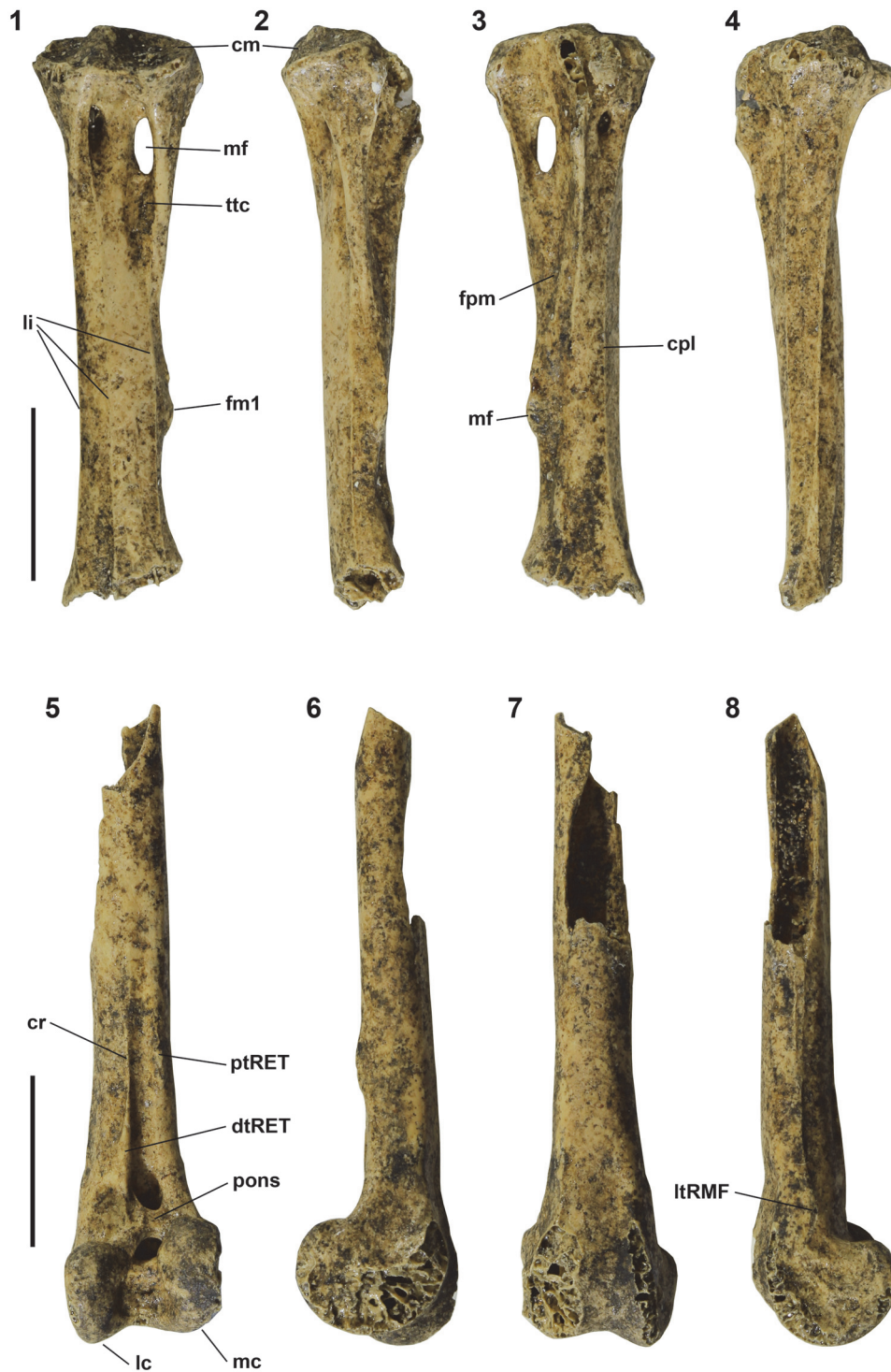
Layer II: TAR6-TP02-II-5-20, pL fem; TAR6-TP11-II-2-9A-D, L metatarsal. Both specimens were in the same layer and in the same (TP2 – holotype) or adjacent (TP11-paratype) excavated units as the type material.

Layer II: TAR6-TP05-II-6-55A-H, sR tt, which overlaps the shaft area preserved in the paratype NMNZ S.47668, is from a second individual, (Total Layer II, including types, NISP= 5; MNI = 2).

Layer III: TAR6-TP02-II-8-33-F, L manus phalanx II.1 (Total NISP= 1; MNI = 1).

#### Measurements

**Holotype.** NMNZ S.47667 (TAR6-TP02-II-5-20), tarsometatarsus, length from proximal end to foramen vasculare distale 33 mm, length to distal side of the metatarsal facet 24.1 mm, length from posterior edge cotyla medialis to proximal end of fossa metatarsi 1 (length 2 – Wragg and Worthy, 2006) 20.1 mm, length from posterior edge cotyla medialis to distal end of medial prominence of fossa metatarsi 1 (length 3 – Wragg and Worthy, 2006)



**FIGURE 3.** *Ductula tihonireasini* n.sp., holotype right tarsometatarsus NMNZ S.47667 (1-4) and paratype distal right tibiotarsus NMNZ S.47668 (5-8) in cranial (1, 5), medial (2, 6), plantar/caudal (3, 7) and lateral (4, 8) views. **Abbreviations:** **cm**, cotylo medialis; **cpl**, crista plantaris lateralis; **cr**, crest; **dtRET**, distal attachment of the retinaculum extensorium tibiotarsi; **fm1**, facet in fossa metatarsi 1; **fpm**, fossa parahypotarsalis medialis; **lc**, condylus lateralis; **li**, lineae intermusculari; **ltRMF**, lateral attachment of the retinaculum musculus fibularis; **mc**, condylus medialis; **mf**, medial foramen vasculare proximale; **pons**, pons supratendineus; **ptRET**, proximal attachment of the retinaculum extensorium tibiotarsi; **ttc**, tuberositas musculus tibialis cranialis. Scale bar equals 10 mm.

24.0 mm, proximal width 9.6 mm, depth cotyla medialis 5.9 mm, least shaft width distal to metatarsal facet 4.6 mm, width at metatarsal facet 5.3 mm.

**Paratype.** NMNZ S.47668 (TAR6-TP11-3-19A-C), tibiotarsus, distal width 8.9 mm, depth of condylus lateralis 7.4 mm; depth of condylus medialis 8.7 mm; shaft width at the medial tuberosity for the proximal attachment of the retinaculum extensorium tibiotarsi 4.3 mm.

**Referred material.** TAR6-TP02-II-5-20, pL fem, proximal width 9.4 mm, proximal depth 8.2 mm; TAR6-TP11-II-2-9A-D, L metatarsal, total length 11.2 mm, maximum distal width 6.3 mm, length of articular facet 8.0 mm; TAR6-TP05-II-6-55A-H, sR tt, preserved length 45 mm, least shaft width 4.5 mm, width at distal end of crista fibularis 6.6 mm, length of crista fibularis 14.5 mm; TAR6-TP02-II-8-33-F, L manus phalanx II.1, total length 23.8 mm, articular length 21.4 mm, width at distal end level with articular surface 7.2 mm.

### Description and Comparisons

In addition to the diagnostic features listed above, we note other features that distinguish *Ducula tihonireasini* n. sp. from its geographically closest congener, *D. harrisoni* of Henderson Island, which has larger and more gracile tarsometatarsi. The dorsal lineae intermusculari form elevated cristae along their length and are much more prominent than those on *D. harrisoni*, see Wragg and Worthy (2006). The one on the medial margin connects the tuberositas m. tibialis cranialis and trochlea metatarsi II. The lateral linea, in dorsal aspect, forms a straight crest extending along the margin distal to the lateral foramen vasculare proximale onto the dorsal surface of trochlea metatarsi IV where it diverges from the shaft. The middle linea commences by defining the lateral margin of the lateral foramen vasculare proximale, then extends distally as the dorsal crest of the dorsal facies to pass on the medial side of the foramen vasculare distale. All three lineae are much more weakly marked on the Henderson *D. harrisoni*. Plantarly, the crista plantaris lateralis in *D. tihonireasini* is more strongly developed. *Ducula harrisoni* further differs from *D. tihonireasini* by greater separation of fossa parahypotarsalis medialis from fossa metatarsi I. The fossa metatarsi I is deeper in *Ducula tihonireasini* and includes a discrete sulcus just distal to the facet for articulation of the os metatarsale. Also, this facet is relatively larger and extends beyond the medial shaft margin to a greater extent. The only species with a similarly stout shaft is *D. david*, however, in this species the fossa parahy-

potarsalis medialis is relatively larger and distally abuts the fossa metatarsi I (Wragg and Worthy, 2006).

*Ducula galeata* has a far more slender tarsometatarsus, with NMNZ O.26971 having greater length and proximal width values, but substantially narrower shaft width values as follows (those of *D. tihonireasini* in brackets for comparison): length from proximal end to foramen vasculare distale 34.6 mm (33.0), length to distal side of the metatarsal facet 26.7 mm (24.1), length from posterior edge cotyla medialis to distal end of medial prominence of fossa metatarsi 1 25.0 mm (18.0), proximal width 10.8 (9.6 mm) mm, least shaft width distal to metatarsal facet 3.6 mm (4.6 mm), width at metatarsal facet 4.1 mm (5.3 mm). The tibiotarsus of *D. galeata* has greater distal width (10.2 mm) but a similar shaft width (4.4 mm), consistent with *D. tihonireasini* having a relatively stout shaft as the measurements of the tarsometatarsus would predict. However, but *D. tihonireasini* differs further with much more robust attachment points for the retinaculum extensorium tibiotarsi and thus a deeper sulcus extensorius.

### Comments

Within the clade of frugivorous pigeons, there were in the prehuman period very often three size-classes in an archipelago, a small *Ptilinopus* fruit dove, and medium- and large-sized species of imperial pigeons in the genus *Ducula*, e.g., *D. pacifica* and *D. goliath*. However, recent phylogenetic analyses of molecular data have shown that the larger species of *Ducula* do not form a clade and have evolved repeatedly from smaller relatives (Cibois et al., 2017). The size classes shown by fruit pigeons doubtless reflect niche segregation based on the size of fruit that can be swallowed (Meehan et al., 2002). The only surviving large species of *Ducula* are *D. goliath* on New Caledonia and *D. galeata* in the Marquesas. However, in the huge intervening area between where these taxa live, there once occurred numerous other large, now extinct, species or populations that could disperse fruit larger than 28 mm in diameter, which is the maximum that *D. pacifica* can eat (Meehan et al., 2002; Steadman, 2006). These include *Ducula* sp. cf. *D. goliath* on Efate in Vanuatu (Worthy et al., 2015), an undescribed *Ducula* sp. on Viti Levu and *D. lakeba* in the Lau Group, Fiji (Worthy, 2001), an undescribed species from Rapa Island in the Austral Group (Tennyson and Anderson, 2012), *D. david* on Uvea in Wallis and Futuna (Balouet and Olson, 1987), an undescribed *Ducula* sp. on

several islands in Tonga (Steadman, 1989b, 1993 [as *D. david*], 1995, 1997, 2006), extirpated populations referred to *D. galeata* on Mangaia in the Cook Islands and Huahine in the Society Islands (Steadman, 1989a, b, 1995, 1997, 2006), and *D. harrisoni* on Henderson Island (Wragg and Worthy, 2006). The discovery here of another large species of *Ducula* in the Gambier Group reinforces the idea that there has been parallel evolution of large forms on many of the islands or archipelagos of the Pacific (Worthy et al., 2015). Furthermore, given the presence of distinct large species of *Ducula* on Henderson Island and in the Gambier Group, then the identification of fossils from the Society and Cook Islands as *D. galeata* (extant only in the Marquesas) may need revisiting, as their identification as a similarly large but distinct species of *Ducula* may be more likely.

It is possible that *Ducula tihonireasini* survived into the Historic period, given the old accounts reported by Thibault and Cibois (2012, 2017) of a “wood-pigeon” (Beechey, 1832) and a “ramier” (Lesson, 1844).

Genus *PTILINOPUS* Swainson, 1825

*Ptilinopus* sp. indet., indeterminate fruit dove

#### Material

**Onemea Site (190-12-TAR-6), Taravai Is.** (Total NISP=3; MNI=3).

Layer II: TAR6-TP11-II-6-38A-B, dR tmt; (NISP=1; MNI=1).

Layer III: TAR6-TP10-III-5-35A-E, 2dL tt; (NISP=2; MNI=2).

#### Comments

A mere three fragmentary specimens attest to the former presence of *Ptilinopus* doves in the Gambier Group. The dR tmt preserves only the area distal to the facet in the fossa metatarsi I, which with a length of 10.2 mm is of a bird a bit larger than *P. regina*. It also lacks all the plantar part of trochlea metatarsi II and all of trochlea metatarsi IV, but has a least shaft width of 2.3 mm and an estimated distal width of about 5.6 mm. Similarly, the two distal tibiotarsi fragments, which lack the condyles and preserve the pons supratendineus and some shaft proximal to that, indicate a dove a bit larger than *P. regina*. They are identified as of a species of *Ptilinopus* by general resemblance to, for example, *P. regina*, and especially by the locations of the attachment points for the retinaculum extensorium tibiotarsi. The proximal attachment point (ptRET) is prominent and lies far proximal to the condylus medialis. The distal

attachment point (dtRET) is a narrow, very elongate and prominent crest, extending from the pons supratendineus proximally along the margin of the sulcus extensorius.

The small columbid *Alopecoenas erythrop-tera*, extant in the nearby Tuamotu Archipelago, was possibly present on the Gambier Group in the nineteenth century (Thibault and Cibois, 2012, 2017) and was recorded from Kamaka Island based on a humerus (Steadman and Justice, 1998). The distal width of the tarsometatarsus in this species is 6.9-7.2 mm (Steadman, 1992) so is larger than the specimen recorded here. Furthermore, the Onemea tarsometatarsus is similar to species of *Ptilinopus* in having the facet in fossa metatarsi I located well proximal to the foramen vasculare distale; the facet lies much closer to the distal end in species of *Alopecoenas*.

Thibault and Cibois (2012) reported a species of *Ptilinopus* based on Kirch et al.'s (2010: 75) statement that “David Steadman.... noted the rare presence of 4 bones of pigeon, 3 bones of fruit dove...”. The latter are the three specimens reported here. Thibault and Cibois (2012) noted that several visitors recorded a probable fruit dove during the nineteenth and early twentieth centuries, but that no specimen was known to have been collected. Species of *Ptilinopus* survive in the Tuamotu Archipelago (*P. chalcurus*, *P. coralensis*), the Marquesas (*P. dupetithouarsii*, *P. mercierii*) and Henderson Island (*P. insularis*) so a former presence of this genus in the Gambier Group is to be expected.

COLUMBIDAE genus et sp. indet.

#### Material

**Kitchen Cave (190-04-KAM-1), Kamaka Is.** (Total NISP=3; MNI=1).

Layer VI: KAM1-B3TP1-VI-16-2A, L cmc; KAM1-B3TP1-VI-16-4A-D, sR hum; KAM1-B3TP1-VI-17-1A-F, R scap; (NISP=1; MNI=1).

Of these bones, the carpometacarpus is potentially the most diagnostic. It is 29.2 mm long and has a large cranially-directed processus extensorius, whereon the proximal margin is at right angles to the bone axis, except for a slight proximal projection at its tip. It has a large and ventrally-prominent processus pisiformis, the ventral rim of the trochlea carpalis is rather short, terminating distally level with the tip of the processus extensorius, and the processus intermetacarpalis is small and in the proximal half of the spatium intermetacarpalis. The carpometacarpus attributed to *Bountyphaps obsoleta* by Worthy and Wragg (2008) is

longer (33.8 mm), and the ventral rim of the trochlea carpalis is longer, extending distally beyond the processus extensorius. However, it is similar in that the processus extensorius is not directed proximally, the trochlea carpalis lacks a fossa infratrochlearis ventrally, and the processus intermetacarpalis is in a similar location (Worthy and Wragg, 2008, figure 2A). KAM1-B3TP1-VI-16-2A also differs markedly from carpometacarpi of *Alopecoenas* species, which are characterised by a strongly proximally-directed processus extensorius, and are smaller, even in the large *A. leonpascoi* (length 21.9-24.2 mm; Worthy and Wragg, 2003). Species of *Didunculus* are also characterised by a proximally directed processus extensorius, but tend to have a distally short ventral rim of trochlea carpalis (Worthy and Wragg, 2008, figure 2). This carpometacarpus is much too small to be associated with the species of *Ducula* recorded from Teouma, and too large to be associated with the *Ptilinopus* bones.

It is possible that KAM1-B3TP1-VI-16-2A, represents a species of *Macropygia*. Steadman (1992) described the relatively large and extinct cuckoo doves *M. arevarevauupa* from Huahine, Society Islands, and *M. heana* from the Marquesas. The latter had carpometacarpi that ranged in length 28.0-29.6 mm, so are of appropriate size for the Kamaka pigeon, but were not described or figured by Steadman (1992). However, *M. amboinensis*, e.g., AM O.70775, differs from the fossil with a more elongate ventral rim of the trochlea carpalis, a more proximally directed processus extensorius and the os metacarpale minus extending distal to os metacarpale majus (equal in the fossil). In summary, this carpometacarpus has features that preclude its attribution to *Bountyphaps* and it is of an appropriate size to be a species of *Macropygia*. Whatever its relationships, it represents a fourth species of pigeon for the Gambier Group.

Of the remaining bones, the scapula is of appropriate size to be associated with the bones identified as *Bountyphaps* sp. cf. *B. obsoleta* but is not so identified because columbid scapulae are poorly diagnostic. The humeral shaft is of appropriate size to be associated with the carpometacarpus, but is too incomplete to inform on relationships.

Order PHAETHONTIFORMES Sharpe, 1891  
 Family PHAETHONTIDAE Brandt, 1840  
 Genus *PHAETHON* Linnaeus, 1758  
*Phaethon lepturus* Daudin, 1802, White-tailed  
 Tropicbird

## Material

**Onemea Site (190-12-TAR-6), Taravai Is.** (Total NISP=20; MNI=4).

Layer II: TAR6-TP05-II-2-25A-C, 1dL ulna; TAR6-TP05-II-5-45A-D, 1L cmc; TAR6-TP05-II-6-55A-D, 1dL cmc; TAR6-TP06-II-2-19A-D, 1dL rad; TAR6-TP06-II-4-36A-B, 1pR1dR 1L1pL ulna, 1pR1L rad, 1R cmc; TAR6-TP06-II-4-37A-C, 2R cmc, 1dR rad, 1dR1dL hum; TAR6-TP10-II-2-13A, 1sR ulna; (NISP=17; MNI=3).

Layer III: TAR6-TP06-III-1-58A-B, 1R cmc; TAR6-TP10-III-4-29A-C, 1dR hum; TAR6-TP11-III-2-65A-A, 1dL hum; (NISP=3; MNI=1).

**Nenega-Iti Site (190-12-AGA-3), Agakauitai Is.** (Total NISP=5; MNI=2).

Layer IV: AGA3-F9-IV3-12-8-1H, 1pL cmc; AGA3-F9-IV3-12-8-1M, 1dL ulna; AGA3-F9-IV3-12-8-1T, 1dR rad; AGA3-G9-IV3-12-1-1D, 1pR rad; AGA3-G9-IV3-12-1-1F, 1R cmc; (NISP=5; MNI=2).

**Kitchen Cave (190-04-KAM-1), Kamaka Is.** (Total NISP=8; MNI=5).

Layer II: KAM1-B2-II-2-1-31D, 1R phal II.1; (NISP=1; MNI=1).

Layer III: KAM1-B3TP1-III2-6-8A-B, 1 anterior pmx; KAM1-B3TP1-III2-7-5A-A, 1dR cor; KAM1-B3TP1-III2-7-5A-E, 1pL rad; KAM1-B4-III2-7-9-1C, 1pL ulna; (NISP=4; MNI=1).

Layer IV: KAM1-B4-IV1-10-3-1B, 1pL tt; KAM1-C4-IV2-13-4-39B, 1pL rad; (NISP=2; MNI=2, allowing for sub-layers).

Layer V: KAM1-C3-V-15-6-25B, 1dL tt; (NISP=1; MNI=1).

The Gambier Group is one of the most southern breeding places for this species, which lives in tropical–sub-tropical waters of the Atlantic, Indian and Pacific oceans.

*Phaethon rubricauda* Boddaert, 1783  
 Red-tailed Tropicbird

## Material

**Onemea Site (190-12-TAR-6), Taravai Is.** (Total NISP=9; MNI=3).

Layer II: TAR6-TP05-II-6-55A-B, 1L tt, 1dL rad; TAR6-TP06-II-1-13A-B, 1sL ulna; (NISP=3; MNI=1).

Layer III: TAR6-TP02-III-8-33-E, juv 1R1L fem; TAR6-TP02-III-8-35-E, 1L tmt; TAR6-TP02-III-9-39-H, 1L cor, 1L scap; (NISP=5; MNI=1).

Unknown (Layer X): TAR6-TP10-X-St.1-34A-E, 1dR hum; (NISP=1; MNI=1).

**Kitchen Cave (190-04-KAM-1), Kamaka Is.** (Total NISP=1; MNI=1).



Layer III: KAM1-C4-III2-8-4-41A, 1pL rad; (NISP=1; MNI=1).

While this taxon breeds at widespread locations in Eastern Polynesia, it does not breed regularly in the Gambier Group nowadays (Thibault and Cibois, 2017).

Order PROCELLARIIFORMES Fürbringer, 1888  
Family PROCELLARIIDAE Leach 1820  
Genus *PSEUDOBULWERIA* Mathews, 1936  
*Pseudobulweria* sp. indet.

## Material

**Onemea Site (190-12-TAR-6), Taravai Is.** (Total NISP=158; MNI=26).

Layer I: TAR6-TP11-I-1-3A-B\*, pR fem; TAR6-TP03-I-2-4A-B\*, dR tt; TAR6-TP05-I-1-1A-A\*, dR tt; TAR6-TP06-I-1-2A-B\*, pR fem; (NISP=4; MNI=2).

Layer II: TAR6-TP02-II-4-14\*, 1dL fem, 1sR tt; TAR6-TP02-II-6-22-C, 1pR hum, 1L cor, 1pL tmt; TAR6-TP02-II-7-31-C, 1L scap, 1R quad; TAR6-TP03-II-1-9A, 1dR tt; TAR6-TP05-II-1-19A\*, 1R tt; TAR6-TP05-II-2-25A-E\*, 1L fem; TAR6-TP05-II-3-31A-C\*, 1dR tt, 1pR tmt; TAR6-TP05-II-6-55A-C\*, 1dL tt, 1pR tmt; TAR6-TP06-II-1-13A-D\*, 1L fem; TAR6-TP06-II-1-13A-E\*, 1dL tt, 1R cor; TAR6-TP06-II-2-19A-C\*, 1pR fem, 1dL tt, 1dR ulna, 1R cor; TAR6-TP06-II-3-31A-B\*, 1L cor, 1L fem, 1dR 1dL tt; TAR6-TP06-II-4-37A-E\*, 1L cor, 1L scap; TAR6-TP11-II-2-9A-C\*, 1L fem, 1R2L cor, 1L scap; TAR6-TP11-II-3-19A-F\*, 1dL tt; TAR6-TP11-II-6-38A-E, 1dL fem; TAR6-TP11-II-8-St.2-51A-B\*, 1pR hum; TAR6-TP12-II-5-32A-A, 1dL hum, 1L cor; TAR6-TP12-II-5-St.2-49A, 1L cor; (NISP=38; MNI=7).

Layer II/III: TAR6-TP10-II/III-3-28A-C\*, 2dL tt, pL tmt; (NISP=3; MNI=2).

Layer III: NMNZ S.47669 (=TAR6-TP02-III-8-33D\*), 1 pmx, 1 pt cran, 1 ant stern, 1dL tt, 1R1pR1L cor, 1dL ulna, 1pL fem; NMNZ S.47670 (=TAR6-TP02-III-8-35D), 1R1sL1dL tt, 1R1L tmt, 1R cor, 1R quad, 1sL ulna, 1 pmx, 1R3L art mand, 1R1L dent, 1L palatine; NMNZ S.47671 (=TAR6-TP02-III-9-39G\*), 1R3L cor, 1 ant stern, 2R2L scap, 1L dent, 1 fur, 1 pt cran, 2 pmx, 1R1L1dL tt, 3L quad, 1R fem, 2dL1pL tmt; TAR6-TP02-III-10-41, 1R quad, 1 pterygoid; TAR6-TP03-III-2-St.1-18A-A\*, 1dR tt; TAR6-TP06-III-3-64A-C\*, 1dR tt, 1dR tmt, 1pL fem; TAR6-TP10-III-4-29A-K, 1R cor, 1pL tt; TAR6-TP10-III-4-29A-B\*, 1dR hum, 1R fem, 1R cor, 1pR2dL tmt, 1dR1dL tt; TAR6-TP10-III-4-29A-G\*, 2dL tt; TAR6-TP10-III-4-29A-J\*, 1dL tt; TAR6-TP10-III-5-35A-C\*, 1dL tt; TAR6-TP10-III-5-35A-D, 1dR tt; TAR6-TP11-III-1-60A-A\*, juv. 1L cor,

1dR tt, 1pL fem; TAR6-TP11-III-2-65A-D\*, 1L1pL rad; TAR6-TP11-III-2-65A-C, 1dL tmt; TAR6-TP11-III-2-65A-Eb\*, 1dR1dL tt; TAR6-TP11-III-2-65A-Fa\*, 2pR1pL tmt, 2pR fem, 5dR 3dL tt; TAR6-TP11-III-2-65A-Ia\*, 3R1pR1dR 2pL2dL fem; TAR6-TP11-III-2-65A-Ja\*, 1R 2dL tt, TAR6-TP11-III-2-65A-P\*, 3L cor; TAR6-TP11-III-2-65A-R\*, 2L cor; TAR6-TP11-III-2-65A-S\*, 3R1L cor; TAR6-TP12-III-9-55A-A, 1L cor; (NISP=113; MNI=15).

**Nenega-Iiti Site (190-12-AGA-3), Agakauitai Is.** (Total NISP=82; MNI=18).

Layer III: AGA3-TP01-III-5-63, dL cmc; AGA3-TP01-III-6-75, sL hum; AGA3-TP01-III-7-86A, 2pR1dL hum, L cmc; (NISP=8; MNI=3).

Layer III/IV: AGA3-TP01-III/IV-interface-94A, pt pR tmt; (NISP=1; MNI=1).

Layer IV/1: AGA3-D9-IV1-12-5-1A\*, 1dL ulna; AGA3-D9-IV1-12-5-1B, 1dL cmc; AGA3-F9-IV1-9-5-54A, 1dL cmc; (NISP=3; MNI=2).

Layer IV/2: AGA3-E9-IV2-12-4-19A\*, 1dL ulna; AGA3-E9-IV2-12-4-19B\*, 1dL ulna; AGA3-F9-IV2-10-1-24A\*, 1L cmc; NMNZ S.47672 (=AGA3-F9-IV2-11-5-1A\*), 1R cmc; AGA3-F9-IV2-11-5-1B, 1pR cmc; AGA3-F9-IV2-11-5-1C, 1R cmc; AGA3-F9-IV2-11-5-1D, 1dL cmc; AGA3-F9-IV2-11-5-1F\*, 1dR tmt; AGA3-F9-IV2-11-5-1G\*, 1dR tmt; AGA3-F9-IV2-11-5-1H, 1pL tmt; AGA3-F9-IV2-11-5-1I, 1L hum; AGA3-F9-IV2-11-5-1J\*, 1dR hum; AGA3-F9-IV2-11-5-1K, 1dR hum; AGA3-F9-IV2-11-5-1M, 1R phal II.1; AGA3-F9-IV2-11-5-1N, 1 phal II.1; (NISP=15; MNI=3).

Layer IV/3: AGA3-D9-IV3-18-5-12B\*, 1dR hum; AGA3-D9-IV3-19-1-1A\*, 1dR hum; NMNZ S.47673 (=AGA3-F9-IV3-12-8-1B\*), 1dL hum; AGA3-F9-IV3-12-8-1C\*, 1dR hum; AGA3-F9-IV3-12-8-1D, 1pL hum; AGA3-F9-IV3-12-8-1E\*, 1dR tmt; AGA3-F9-IV3-12-8-1F, juv. 1dR tmt; AGA3-F9-IV3-12-8-1G, 1pL tmt; AGA3-F9-IV3-12-8-1J, 1dR cmc; AGA3-F9-IV3-12-8-1K, 1dR cmc; AGA3-F9-IV3-12-8-1N\*, 1dR ulna; AGA3-F9-IV3-12-8-1P\*, 1pR ulna; AGA3-F9-IV3-12-8-1Q, 1pR rad; AGA3-F9-IV3-12-8-1R, 1pL rad; AGA3-G9-IV3-12-1-1A\*, 1dR tmt; AGA3-G9-IV3-12-1-1B\*, 1dR ulna; AGA3-G9-IV3-12-1-1C\*, 1pL ulna; AGA3-G9-IV3-12-1-1E\*, 1L cmc; AGA3-G9-IV3-12-1-1G\*, 1dR hum; AGA3-G9-IV3-12-1-1I, 1pL hum; (NISP=20; MNI=4).

Layer IV/4: AGA3-D9-IV4-20-5-1B\*, 1L tmt; AGA3-D9-IV4-20-5-1D\*, 1dL tt; AGA3-D9-IV4-20-5-1E, 1L ulna; AGA3-D9-IV4-20-5-1F\*, 1pR ulna; AGA3-D9-IV4-21-5-1B\*, 1dL hum; AGA3-D9-IV4-21-5-1D\*, 1dL tt; NMNZ S.47674 (=AGA3-D9-IV4-21-5-1E\*), 1pR cmc; NMNZ S.47675 (=AGA3-D9-IV4-21-5-1H\*), 1R ulna; AGA3-D9-IV4-21-5-1J\*, 1dR

ulna; AGA3-D9-IV4-21-5-1P, 1pR hum; AGA3-E9-IV4-14-4-1A\*, 1dR hum; AGA3-E9-IV4-14-4-1C, 1pL cmc; AGA3-F9-IV4-13-1-1A\*, 1dL hum; NMNZ S.47676 (=AGA3-F9-IV4-13-1-1B\*), 1dR hum; AGA3-F9-IV4-13-1-1C, 1pL hum; AGA3-F9-IV4-13-1-1D, 1pR hum; NMNZ S.47677 (=AGA3-F9-IV4-13-1-1E\*), 1pL hum; AGA3-F9-IV4-13-1-1F, 1L phal II.1; AGA3-F9-IV4-13-1-1G\*, 1dL cmc; AGA3-F9-IV4-13-1-1H, 1pL cmc; AGA3-F9-IV4-13-1-1J\*, 1R ulna; AGA3-F9-IV4-13-1-1K\*, 1L ulna; AGA3-F9-IV4-13-1-1O, 1pL rad; AGA3-F9-IV4-13-1-1P, 1dR rad; AGA3-F9-IV4-13-3-1B\*, 1R hum; AGA3-F9-IV4-13-3-1C\*, 1L tmt; AGA3-F9-IV4-13-3-1D\*, 1pL ulna; AGA3-F9-IV4-13-3-1E\*, 1dL ulna; AGA3-F9-IV4-13-6-1A\*, 1R tmt; AGA3-F9-IV4-13-6-1D\*, 1dL tt; AGA3-F9-IV4-13-6-1J, 1dL cmc; AGA3-F9-IV4-13-6-1K, 1dL cmc; AGA3-G9-IV4-13-1-1B\*, 1dR ulna; NISP=33; MNI=4).  
 Layer IV/5: AGA3-F9-IV/V-14-1-1A\*, 1dL hum; AGA3-F9-IV/V-14-1-1B\*, 1dL ulna; (NISP=2; MNI=1).

### Measurements

Summary statistics for measurements (mm) of the *Pseudobulweria* bones are compared to those of individuals of other procellariids in Table 1.

**Skull Measurements.** Anterior cranial fragment (NMNZ S.47669): preorbital width (estimated from the complete right side) is 19.0 mm; nasofrontal hinge width, ~ 9.4 mm, is 52% of preorbital width. Premaxilla (NMNZ S.47669): TL ~30.0 mm; hinge to nares ~4.4 mm; length nares 7.5 mm; length from anterior nares to tip 18.0 mm; depth at cranial end of nares 8.0 mm. Premaxilla (NMNZ S.47670): TL ~31.5 mm; length nares 10.5 mm; length from anterior nares to tip 18.1 mm; depth at cranial end of nares 9.1 mm. Premaxilla (NMNZ S.47671): TL ~30.9 mm; length nares 8.0 mm; length from anterior nares to tip 18.5 mm; depth at cranial end of nares 8.3 mm.

### Comments

The abundant bones listed here represent a small species of *Pseudobulweria*, one that is slightly smaller than *Pterodroma heraldica* or similar to *P. leucoptera*. This taxon was first identified by Worthy and Tennyson (2004) and is much smaller than *P. rostrata*, precluding their being small specimens of that taxon (*contra* Thibault and Cibois, 2017). In terms of proportions, this Gambier species of *Pseudobulweria* compares to the similar-sized and sympatric *Pterodroma leucoptera* (SAM B31271a) as follows: the premaxilla is of similar length; the coracoids are slightly smaller

overall; the ulnae and humeri are slenderer, but slightly longer; the tibiotarsi are slightly longer, but stouter, especially distally; and the tarsometatarsi are slenderer and longer.

The Gambier taxon conforms with *Pseudobulweria rostrata* and differs from species of *Pterodroma* as follows. Cranium: relatively narrower in dorsal view at both lacrymals and processus postorbitales, but with a relatively wider nasofrontal hinge; the preorbital region at the lacrymals is craniocaudally shorter and the preorbital lacrymal processes more directed caudally; the fossae temporales are more extensive both craniocaudally and medially, meeting on the midline; the nares are more widely separated from the nasofrontal hinge on the premaxilla at a distance of about 2/3 hinge width (~1/2 in *Pterodroma*); and the processus nasalis of the premaxilla is not evident at or anterior to hinge (lateral edges well-marked by lines in *Pterodroma*). Humerus: more elongate and the impression for the brachialis anticus within the fossa brachialis is well defined distally and near circular (not defined well distally and oval in *Pterodroma*). Ulna: more elongate and the tip of the tuberculum carpale projects somewhat distally enclosing a notch distally (markedly so in *P. rostrata*; projects somewhat proximally in *Pterodroma*). Carpometacarpus: the processus pisiformis is much larger. Coracoid: the processus acrocoracoideus is much deeper dorsoventrally and depth widens towards the tip, whereas depth at along the processus is similar in *Pterodroma*. Tarsometatarsus: much more elongate relative to both humeri and coracoids and more strongly ridged dorsally, especially along the lateral side enclosing a much deeper sulcus extensorius. Lastly, *Pseudobulweria* has a major structural difference of the hypotarsus, where the middle hypotarsal ridge (crista lateralis flexoris digitorum longus, Mayr, 2016), which is prominent in *Pterodroma*, is markedly reduced. This results in the lateral sulcus for the tendon of musculus flexor hallucis longus (fhl) being merged with that medially for the sulcus for the tendon of musculus flexor digitorum longus (fdl) as a single sulcus. Bounding this laterally, the crista lateralis flexoris hallucis longus is much more robust and, plantarly, is both laterally and medially expanded to form a broad, flat, crista with a shallow sulcus for the tendon of musculus flexor perforatus digiti 2 on its plantar side.

Three species of *Pseudobulweria* occur in the Pacific, Tahiti Petrel *P. rostrata*, Beck's Petrel *P. becki*, and Fiji Petrel *P. macgillivrayi*, one in the Indian Ocean Mascarene Petrel *P. aterrima* and an

**TABLE 1.** Measurements (mm) of exemplary specimens of extant taxa PSRO (*Pseudobulweria rostrata*, NMNZ O.24691), PTLE (*Pterodroma leucoptera* SAM B31271a), and PTHE (*Pterodroma heraldica* NMNZ O.24691) compared to summary statistics of specimens (see \*) listed as *Pseudobulweria* sp. indet. from two Gambier Group sites (Onemea and Nenega-Iti). Abbreviations: TL, total length, except for tibiotarsi, where length is from the proximal articular surface; PW, proximal width; DW, distal width; MDWS, tibiotarsus distal minimum width shaft; Mdws, tibiotarsus craniocaudal depth shaft at minimum width point; Am-a, angulus medialis to acrocoracoideus; Am-cs, angulus medialis to cotyla scapularis; Cs-a, cotyla scapularis to acrocoracoideus; Cs-fah, cotyla scapularis to facies articularis humeralis; MSW, humerus mid-shaft dorsoventral width; Msw, humerus mid-shaft craniocaudal depth; DCW, distal condylus width.

	Femur			Tibiotarsus				Tarsometatarsus			Scapula	Carpometacarpus	
	TL	PW	DW	TL	DW	MDWS	Mdws	TL	PW	DW	PW	TL	PW
PSRO	-	7.5	-	-	6.4	3.6	-	49.1	7.7	7.3	-	51.8	10.6
PTLE	26.6	4.9	4.4	51.8	4.1	2.0	1.8	29.8	5.0	4.7	6.8	35.3	8.6
PTHE	29.7	5.9	5.3	53.5	5.0	2.7	-	33.6	6.0	5.8	-	43.3	10.3
Mean	25.5	5.2	4.8	51.6	4.6	2.6	1.9	36.1	5.5	5.2	6.4	38.0	8.4
Min	24.0	4.9	4.5	50.5	4.2	2.4	1.6	35.6	5.1	4.8	5.7	37.4	8.3
Max	26.2	6.1	5.1	52.7	5.0	2.9	2.2	36.7	5.7	5.5	6.8	38.7	8.4
Std dev	0.70	0.27	0.27	1.00	0.17	0.14	0.13	0.57	0.19	0.22	0.52	0.63	0.06
Count	8	17	9	4	42	30	30	3	9	14	4	3	2

	Coracoid				Humerus				Ulna				Radius	
	Am-a	Am-cs	Cs-a	Cs-fah	PW	DW	MSW	Msw	TL	PW	DW	DCW	TL	DW
PSRO	27.3	-	-	-	15.3	11.7	5.1	-	108.6	7.7	7.7	-	-	-
PTLE	21.5	17.0	8.4	5.7	11.0	8.5	4.1	3.2	71.5	6.5	5.1	4.8	69.0	4.9
PTHE	23.2	-	-	-	13.8	10.6	4.6	-	92.0	7.2	7.7	-	-	-
Mean	19.5	14.7	8.4	5.5	11.0	8.8	4.0	3.0	81.6	6.9	5.8	4.1	79.9	4.1
Min	18.4	13.5	7.9	5.1	10.9	7.5	3.8	2.4	80.0	5.7	5.2	3.2	-	-
Max	21.2	16.0	9.2	6.0	11.1	9.2	4.1	3.2	83.1	7.4	6.8	4.9	-	-
Std dev	0.79	0.63	0.39	0.26	0.11	0.50	0.11	0.23	2.16	0.61	0.40	0.36	-	-
Count	18	18	18	18	3	9	11	11	2	7	14	14	1	1

extinct taxon *P. rupinarum* is known from St Helena Island in the Atlantic Ocean (see Gangloff et al., 2012; Dickinson and Remsen, 2013). The bones recorded here represent a much smaller species than *P. rostrata* (culmen length 33.1-38.2 mm, tarsus length 43.3-51.0 mm; Villard et al., 2006), which is the only extant representative of this genus known from the Gambier Group (Thibault and Cibois, 2017). Based on a tarsometatarsus length of 35.6-36.7 mm (Table 1) and a premaxilla length c. 30.0 mm (NMNZ S.47669) the species formerly in the Gambier Group was of similar size to the remaining three extant species of *Pseudobulweria*. Of the Pacific taxa, *P. macgillivrayi* breeding on Gau Island, Fiji (Watling and Lewanavanua, 1985; Priddel et al., 2008; Shirihai et al., 2009), is geographically the closest breeding species, and is of appropriate size with a tarsus length of 36-38 mm and an unfeathered bill length (slightly less

than premaxilla length) of 25.0-25.7 mm (Shirihai et al., 2009).

Steadman and Justice (1998) identified an ulna 78 mm long as *Bulweria* sp. cf. *B. fallax*, however this bone was not compared to those of any species of *Pseudobulweria*. Among the ulnae, we attribute to *Pseudobulweria* sp. are two with complete length (80, 83 mm; Table 1), which are not the smallest in the sample, so the bone attributed to *Bulweria* could be the same taxon, as suggested by Worthy and Tennyson (2004). This suggestion is supported by the observation that the ulnae we refer to *Pseudobulweria* have the main features used by Steadman and Justice (1998) to typify *Bulweria* (slender shaft and small olecranon). It is not clear to us what Steadman and Justice (1998: table 4) meant by the character "Junction of processus cotylaris dorsalis with shaft in dorsal aspect" identified as intermediate, compared to abrupt in *Puffinus* and gradual in *Pterodroma*. However, the

processus cotylaris dorsalis is smaller/less projecting in the ulnae identified as *Pseudobulweria* sp. than in species of *Puffinus*, but it is similar in size and projection to, for example, *Pterodroma leucoptera*, and in all compared taxa, the distal margin of the processus is at right angles to the shaft in dorsal view.

Genus *PTERODROMA* Bonaparte, 1856  
*Pterodroma* magn. *P. heraldica* (Salvin, 1888),  
 Herald Petrel

## Material

**Onemea Site (190-12-TAR-6), Taravai Is.** (Total NISP=55; MNI=8).

Layer II: TAR6-TP02-II-3-8, 1pR hum; TAR6-TP05-II-1-15A-B, 1L tmt; TAR6-TP05-II-1-15A-D, 1R cor; TAR6-TP05-II-2-25A-A, 1L cmc, 1R cor; TAR6-TP05-II-3-31A-D, 1dR rad; TAR6-TP05-II-3-31A-F, 1L scap; TAR6-TP05-II-4-39A-C, 1R cor; TAR6-TP05-II-4-39A-D, 1L scap; TAR6-TP05-II-5-45A-B, 1R scap; TAR6-TP05-II-6-55A-I, 1L cor; TAR6-TP05-II-6-55A-J, 1L cor, 1R scap; TAR6-TP06-II-1-13A-C, 1R1pL fem; TAR6-TP06-II-1-13A-H, 1pR rad; TAR6-TP06-II-1-13A-J, 1dL hum, 1R scap; TAR6-TP06-II-3-31A-C, 1L cor, 1pR tmt; TAR6-TP06-II-5-Fosse-46A-C, 1dR tt; TAR6-TP11-II-1-6A-A, 1dL hum; TAR6-TP11-II-1-6A-B, 1pL tmt; TAR6-TP11-II-2-9A-A, 1 synsacrum, 1R phal II.1, 1R cmc, 1L cor; TAR6-TP11-II-2-9A-Bb, 1dR hum; TAR6-TP11-II-3-19A-E, 1pR hum; TAR6-TP12-II-5-St.1-27A-B, 1dR1dL tmt, 1R scap; (NISP=32; MNI=4).

Layer III: TAR6-TP02-III-9-39F, 2R1L cor, 1 ant stern, 1dR fem; TAR6-TP10-III-4-29A-I, 1dR tt; TAR6-TP10-III-4-29A-L, 1pR tt; TAR6-TP11-III-2-65A-Bc, 1dR tt; TAR6-TP11-III-2-65A-Fb, 1dR tmt, 1R scap, 1pR ulna; TAR6-TP11-III-2-65A-H, 1R fem; TAR6-TP11-III-2-65A-Ib, 1pR fem; TAR6-TP11-III-2-65A-Jb, 1dR tt; TAR6-TP11-III-2-65A-Ob, 2R cor, 1dL tmt; TAR6-TP11-III-2-65A-Q, 3L cor; (NISP=20; MNI=4).

Unknown (Layer X): TAR6-TP10-X-St.1-34A-B, 1dL tt; TAR6-TP10-X-St.1-34A-D, 1dL tmt, 1pR fem; (NISP=3; MNI=1).

**Nenega-Iti Site (190-12-AGA-3), Agakauitai Is.** (Total NISP=6; MNI=3).

Layer IV: AGA3-F9-IV2-11-5-1E, 1dR tmt; AGA3-D9-IV3-18-5-12A, 1pR tmt; AGA3-F9-IV3-12-8-1O, 1dR cmc; AGA3-F9-IV3-12-8-1S, 1dL rad; AGA3-D9-IV4-21-5-1I, 1pL rad; AGA3-G9-IV4-13-1-1C, 1pR ulna; (NISP=6; MNI=3).

**Kitchen Cave (190-04-KAM-1), Kamaka Is.** (Total NISP=4; MNI=1).

Layer V: KAM1-C3-V-14-3-23C, 1sR hum; KAM1-B2-V-Fe10-1-1, 1L ulna; (NISP=2; MNI=1).

Layer VI: KAM1-B3TP1-VI-17-1A-B, 1pL tmt; KAM1-B3TP1-VI-17-1A-C, 1dL hum; (NISP=2; MNI=1).

As described above in 'Nomenclature', we list under this taxon bones of the medium-sized species of *Pterodroma*. The bones are similar in size to those of our individual reference specimen of *P. heraldica* given in Table 1 and larger than those listed under our small size-class taxon below. However, as detailed above, these are likely to mainly include three taxa with widely overlapping size known to breed in the Gambier Group (Herald Petrel *P. heraldica*, Murphy's Petrel *P. ultima*, and the Kermadec Petrel *P. neglecta*), although bones of vagrant individuals of further similar-sized taxa, such as Phoenix Petrel *P. alba* and Henderson Petrel *P. atrata* could also be present as well (Thibault and Cibois, 2017). It is not considered feasible to distinguish any of these taxa on the basis of the morphology of postcranial remains (Murphy and Pennoyer, 1952; Marchant and Higgins, 1990; Walker et al., 1990; Wragg, 1995; Cooper and Tennyson, 2008; Tennyson et al., 2015).

*Pterodroma* magn. *P. leucoptera* (Gould, 1844)  
 White-winged Petrel

## Material

**Onemea Site (190-12-TAR-6), Taravai Is.** (Total NISP=22; MNI=5).

Layer I: TAR6-TP05-I-2-6A-A, 1R scap; (NISP=1; MNI=1).

Layer II: TAR6-TP05-II-3-31A-E, 1R scap; TAR6-TP06-II-1-13A-I, 1R scap; TAR6-TP11-II-3-19A-B, 1 synsacrum, 1dR tt; TAR6-TP11-II-6-38A-C, 1dR tt; (NISP=5; MNI=2).

Layer III: TAR6-TP10-III-4-29A-D, 1L quad, 1L fem, 1pR tmt, 1dR1dL tt; TAR6-TP10-III-5-35A-B, juv 1pL fem; TAR6-TP11-III-2-65A-Ea, 1dR hum, 1pR fem, 2R1L quad, 1R1L scap; TAR6-TP11-III-2-65A-Oa, 2L cor; TAR6-TP12-III-9-55A-B; 1L scap; (NISP=16; MNI=2).

Under this taxon, we list remains of *Pterodroma*, which derive from smaller species than that in the previous size-class taxon. The bones are similar in size to those of an individual *P. leucoptera* given in Table 1. However, see Cooper and Tennyson (2008, appendix 1.2) for data showing how metrics for a large sample of a similar-sized common species (*P. nigripennis*) far exceed those in the small (n=2) sample for the rare taxon (*P. leucoptera*), whose size range would in reality be expected to approach that of the former species. In

the eastern Pacific region, such small species of *Pterodroma* potentially include either formerly breeding and or seasonally visiting Gould's Petrel *Pterodroma leucoptera*, Collared Petrel *P. brevipes*, Pycroft's Petrel *P. pycrofti* and Black-winged Petrel *P. nigripennis* (Dickinson and Remsen, 2013; Rayner et al., 2016; BirdLife International, 2017). Skeletal measurements for all except *P. brevipes* are given by Cooper and Tennyson (2008). *Pterodroma brevipes*, which mainly breeds in the Vanuatu – Fiji region, has a small breeding population on Raivavae, Austral Islands, and currently forages near the Gambier Group. In 1922, a mummified wing (AMNH 191743) was collected on Mangareva, which may reflect a lost breeding population (Thibault and Cibois, 2012, 2017). As for the previous taxon, these species all have broadly overlapping size and their discrimination based on morphology of post cranial bones is not considered feasible (Murphy and Pennoyer, 1952; Marchant and Higgins, 1990; Walker et al., 1990; Wragg, 1995; Cooper and Tennyson, 2008; Tennyson et al., 2015).

*Pterodroma* sp. indet.

#### Material

**Onemea Site (190-12-TAR-6), Taravai Is.** (Total NISP=7; MNI=3).

Layer II: TAR6-TP05-II-6-55A-G, 1L scap; TAR6-TP06-II-2-19A-B, 1R1L fem, 1dR tt, 1R cor; TAR6-TP11-II-6-38A-D, 2pL fem; (NISP=7; MNI=3).

**Nenega-Iti Site (190-12-AGA-3), Agakauitai Is.** (Total NISP=1; MNI=1).

Layer II: AGA3-D12-II2-3-6-27, 1dR tt; (NISP=1; MNI=1).

**Kitchen Cave (190-04-KAM-1), Kamaka Is.** (Total NISP=1; MNI=1).

Layer III: KAM1-C3-III1-3-11-45A, 1dL rad; (NISP=1; MNI=1).

These bones are not well-enough preserved to be specifically identifiable, but may from the above species of *Pterodroma*.

Genus *PUFFINUS* Brisson, 1760

*Puffinus* magn. *P. bailloni* Bonaparte, 1857,  
Tropical Shearwater

#### Material

**Onemea Site (190-12-TAR-6), Taravai Is.** (Total NISP=26; MNI=8).

Layer I: TAR6-TP11-I-1-3A-A, 1R articular pt mand; (NISP=1; MNI=1).

Layer II: TAR6-TP05-II-1-15A-E, 1dR tt; TAR6-TP05-II-2-25A-F\*, 1dL rad, TAR6-TP05-II-4-39A-B,

1dR tt; TAR6-TP05-II-5-45A-C, 1L cor; TAR6-TP05-II-6-55A-E\*, 1sL tmt, 1R scap, 1dR tt; TAR6-TP11-II-2-9A-Ba\*, 1dR1dL tt; TAR6-TP11-II-3-19A-D, 1pR fem 1R cor; (NISP=11; MNI=4).

Layer III: TAR6-TP10-III-4-29A-F\*, 1R2L scap; TAR6-TP11-III-2-65A-Ba\*, 1R fem, 1L scap, 2pR tmt, 1pR hum, 2dR1dL tt, 1R cor; TAR6-TP12-III-7-47A-A\*, pt 1L fibula, 1L tt; (NISP=14; MNI=3).

**Nenega-Iti Site (190-12-AGA-3), Agakauitai Is.** (Total NISP=6; MNI=4).

Layer II: AGA3-D9-II2-5-4-18\*, 1dL hum; AGA3-E9-II2-5-7-72A\*, 1dL ulna; AGA3-E9-II2-5-7-72B\*, 1dR tt; AGA3-E9-II3-6-1-25A\*, 1dL tt; (NISP=4; MNI=2; treating II2 and II3 separately).

Layer III: AGA3-F9-III-7-3-18A, 1dL tt; (NISP=1; MNI=1).

Layer IV: AGA3-F9-IV4-13-6-1H\*, 1dR rad; (NISP=1; MNI=1).

**Kitchen Cave (190-04-KAM-1), Kamaka Is.** (Total NISP=11; MNI=6).

Layer I: KAM1-C4-I-1-2-13A, 1pL hum; (NISP=1; MNI=1).

Layer II: KAM1-B2-II-2-1-31B\*, 1dL tt, 1pR hum; (NISP=2; MNI=1).

Layer III: KAM1-B3TP1-III2-5-5AO-A, 1dR rad; KAM1-B3TP1-III2-7-5A-C\*, 1pL hum; KAM1-B4-III2-6-6-45B, 1dR tmt; (NISP=3; MNI=1).

Layer IV: KAM1-B2-IV1-7-1-23B\*, 1dL fem; KAM1-B2-IV1-8-2-1, 1pL tt; KAM1-C3-IV1-10-4-45B, 1R cor; KAM1-B4-IV2-12-3-38B, 1L cor; (NISP=4; MNI=2).

Layer V: KAM1-C4-V-14-8-15A\*, 1dL tt; (NISP=1; MNI=1).

As noted above, specimens listed here under the taxon *Puffinus* magn. *P. bailloni* include small (Table 2) *Puffinus* bones, which based on the current breeding distributions of taxa are probably mainly of *P. bailloni*. The taxon *P. bailloni* includes forms from Eastern Polynesia previously listed as Little Shearwater *P. assimilis* or Audubon's Shearwater *P. Iherminieri*. But, as noted in the Introduction under nomenclature, other similar-sized species that probably forage in the region may be included in the sample as follows: *Puffinus bailloni* *gunax* (breeding Vanuatu), *P. auricularis myrtae* (= *P. newelli myrtae* in del Hoyo et al. (2017) and *Puffinus assimilis kermadecensis*; see Marchant and Higgins (1990) and Pyle et al. (2011) for metrics on specimens from extant populations of these taxa. *Puffinus bailloni* currently breeds mainly on Manui and Motu Teiku, but also does so on Manga-eva, Makaroa, Akamaru, and Kamaka (Thibault and Cibois, 2017).

**TABLE 2.** Summary statistics (X, mean; Min minimum; Max maximum; n count) of measurements (mm) of bones listed as *Puffinus magn. P. bailloni* from three sites in the Gambier Group (Onemea TAR-6, Nenega-Iti AGA-3 and Kitchen Cave KAM-1). Gambier specimens used: see \* in specimen list in Systematics section; *gavia* is *P. gavia* SAM B.55367; *assimilis* is *P. assimilis kermadecensis* (NMNZ O.23972, 24230, 24229, 15912, 23986, 24229, 24381, 24382, 15911). Standard length measurements are presented for *P. assimilis kermadecensis* to show how much smaller this taxon is than the *P. gavia* specimen used to identify the Gambier bones to genus. As discussed under nomenclature, the Gambier size-based taxon used here could include *Puffinus bailloni dichrous*, *P. bailloni gunax*, *P. auricularis myrtae* and *P. assimilis kermadecensis*, which all have broadly overlapping size distributions (Marchant and Higgins, 1990; Pyle et al., 2011). However, our data presented here for *P. assimilis kermadecensis* suggest it is a smaller bird than the Gambier birds were. Abbreviations: TL, Total length; PW, proximal width; DW, distal width; TSW, tibiotarsus minimal shaft width; ML, angulus medialis to processus acrocoracoideus; M-cs, angulus medialis to cotyla scapularis; Cs-a, cotyla scapularis to processus acrocoracoideus.

		Fem	Fem	Fem	Tib	Tib	Tib	Cor	Cor	Cor	Hum	Hum	Hum	Ulna	Ulna	Cmc	Rad
		TL	PW	DW	artL	DW	SW	ML	M-cs	Cs-a	L	PW	DW	L	DW	L	DW
Gambier	X	29.8	6.7	5.7		5.3	3.3	25.9	19.1	11.6		10.4	9		5.6		4.7
	Min			5.1		4.2	3					10.3					
	Max			6.2		6.5	3.5					10.6					
	SD					0.69	0.2										
	n	1	1	2		11	9	1	1	1		2	1		1		1
<i>gavia</i>		30.5	7.2	6.6	63.6	5.6	3.4	28	19.8	12.5	73.5	14.1	10.3	64.4	6.7	38.1	5.1
<i>assimilis</i>	X	24.0			53.8			21.1			59.7			51.8		31.9	
	Min	23.1			51.9			20.0			57.0			51.8		30.7	
	Max	25.0			56.8			22.6			62.9			51.8		33.4	
	SD	0.60			1.77			0.92			1.86			51.8		1.00	
	n	9			9			9			9			51.8		9	

*Puffinus nativitatis* Streets, 1877, Christmas Shearwater

### Material

**Onemea Site (190-12-TAR-6), Taravai Is.** (Total NISP=28; MNI=5).

Layer II: TAR6-TP05-II-2-25A-D, 1pL tmt; TAR6-TP06-II-1-13A-F, 1dR tt, 1pL1dL tmt; TAR6-TP06-II-4-37A-D, 1dL rad; (NISP=5; MNI=2).

Layer III: TAR6-TP02-III-8-33-C, 1L cor, 1sL tt, 1R scap; TAR6-TP02-III-8-35-C, 1sR tt, 1R tmt, 1 ant stern, 1R quad; TAR6-TP02-III-9-39-C, 2R1L cor, 1R2L scap, 2 ant stern, 1R tmt, 1dR tt, 1R1sL fem; TAR6-TP06-III-3-64A-A, 1R tmt, 1pR hum, 1R scap; TAR6-TP11-III-2-65A-Bb, 1dR hum; (NISP=23; MNI=3).

**Nenega-Iti Site (190-12-AGA-3), Agakauitai Is.** (Total NISP=9; MNI=3).

Layer IV: AGA3-F9-IV2-10-1-24B, 1R cmc; AGA3-D9-IV4-20-5-1C, 1dL tmt; AGA3-D9-IV4-21-5-1A, 1pL hum; AGA3-D9-IV4-21-5-1F, 1pL cmc; AGA3-E9-IV4-14-4-1B, 1dR cmc; AGA3-F9-IV4-13-6-1B, 1dL tmt; AGA3-F9-IV4-13-6-1C, 1dR tt; AGA3-F9-IV4-13-6-1I, 1dR rad; AGA3-G9-IV4-13-1-1A, 1pL cor; (NISP=9; MNI=3, allowing sub-layers).

**Kitchen Cave (190-04-KAM-1), Kamaka Is.** (Total NISP=1; MNI=1).

Layer IV: KAM1-C4-IV1-11-3-62B, 1dR tt; (NISP=1; MNI=1).

The Christmas Shearwater *P. nativitatis* has a widespread breeding distribution in Eastern Polynesia, including in the Gambier Group (Thibault and Cibois, 2017).

*Puffinus* sp. Indet.

### Material

**Nenega-Iti Site (190-12-AGA-3), Agakauitai Is.** (Total NISP=1; MNI=1).

Layer IV: AGA3-D9-IV3-19-1-B, 1pL tmt; (NISP=1; MNI=1).

Genus *AR DENNA* Reichenbach, 1853  
*Ardenna pacifica* (Gmelin, 1789), Wedge-tailed Shearwater

### Material

**Onemea Site (190-12-TAR-6), Taravai Is.** (Total NISP=12; MNI=4).

Layer I: TAR6-TP05-I-1-1A-B, 1pR hum; (NISP=1; MNI=1).

Layer II: TAR6-TP06-II-1-13A-G, 1R phal II.1; TAR6-TP11-II-3-19A-G, 1pR hum; TAR6-TP11-II-4-23A-B, 1dR ulna; (NISP=3; MNI=1).



Layer III: TAR6-TP02-III-9-39-D, 1R tmt, 1dR tt; TAR6-TP02-III-9-39-E, 1R1L scap, 1pR fem; TAR6-TP11-III-2-65A-C, 1pR hum; TAR6-TP11-III-2-65A-Ec, 1L scap; TAR6-TP11-III-2-65A-K, 1dL tt; (NISP=8; MNI=2).

**Nenega-Iti Site (190-12-AGA-3), Agakauitai Is.** (Total NISP=3; MNI=1).

Layer IV: AGA3-F9-IV3-12-8-1I, dR cmc; AGA3-F9-IV3-12-8-1L, dR ulna; AGA3-G9-IV3-12-1-1H, pL hum; (NISP=3; MNI=1).

**Kitchen Cave (190-04-KAM-1), Kamaka Is.** (Total NISP=2; MNI=2).

Layer IV: KAM1-B3TP1-IV2-12-1A-A, 1pL ulna; (NISP=1; MNI=1).

Layer V: KAM1-C4-V-16-1-1A, 1pL hum; (NISP=1; MNI=1).

*Ardenna pacifica*, previously listed in the genus *Puffinus*, has a widespread breeding distribution in Eastern Polynesia, including in the Gambier Group (Thibault and Cibois, 2017).

Procellariidae genus indet.

#### Material

**Onemea Site (190-12-TAR-6), Taravai Is.** (Total NISP=11; MNI=7).

Layer II: TAR6-TP06-II-5-Fosse-46A-B, 1dL ulna; TAR6-TP11-II-3-19A-F, 1R3L scap; (NISP=5; MNI=3).

Layer II/III: TAR6-TP10-II/III-3-28A-E, 1R scap; (NISP=1; MNI=1).

Layer III: TAR6-TP10-III-4-29A-E, 1sR hum; TAR6-TP11-III-2-65A-M, 3R1L scap; (NISP=5; MNI=3).

**Nenega-Iti Site (190-12-AGA-3), Agakauitai Is.** (Total NISP=17; MNI=5).

Layer IV: AGA3-E9-IV2-11-5-1A, 1sL hum; AGA3-F9-IV2-11-5-1L, 1pR hum; AGA3-F9-IV2-11-5-1Q, 1pL ulna; AGA3-F9-IV2-11-5-1R, 1dL ulna; AGA3-F9-IV2-11-5-1S, 1dL cmc; AGA3-D9-IV3-19-1-1C, 1sR hum; AGA3-D9-IV3-19-1-1D, 1sR ulna; AGA3-F9-IV3-12-8-1U, 1dR rad; AGA3-D9-IV4-20-5-1G, 1pL hum; AGA3-D9-IV4-20-5-1A, dL hum; AGA3-D9-IV4-21-5-1K, 1sR ulna; AGA3-D9-IV4-21-5-1L, 1sR ulna; AGA3-F9-IV4-13-1-1M, 1pR rad; AGA3-F9-IV4-13-1-1N, 1pL rad; AGA3-F9-IV4-13-6-1E, 1dR hum; AGA3-F9-IV4-13-6-1F, 1pL hum; AGA3-F9-IV4-13-6-1G, 1L phal II.1; (NISP=17; MNI=5, allowing for sub-layers).

**Kitchen Cave (190-04-KAM-1), Kamaka Is.** (Total NISP=1; MNI=1).

Layer V: KAM1-C4-V-14-8-15B, 1dL cmc; (NISP=1; MNI=1).

Under this taxon, we list bones belonging to either petrels or shearwaters, but their fragmentary nature precludes a more precise identification.

Family OCEANITIDAE Salvin, 1896

Genus *NESOFREGETTA* Mathews, 1912

*Nesofregetta fuliginosa* (Gmelin, 1789), Polynesian Storm-Petrel

#### Material

**Onemea Site (190-12-TAR-6), Taravai Is.** (Total NISP=1; MNI=1).

Layer III: TAR6-TP10-III-4-29A-H, 1dR tt; (NISP=1; MNI=1).

**Kitchen Cave (190-04-KAM-1), Kamaka Is.** (Total NISP=37; MNI=15, allowing for sub-layers).

Layer I: KAM1-C3-I-1-4-11\*, 1R fem; (NISP=1; MNI=1).

Layer III: KAM1-B2-III1-3-5-39B\*, 1dL tt; KAM1-B4-III1-4-7-7B, 1dL tt; KAM1-B2-III2-5-3-161A\*, 1dL tmt; KAM1-B2-III2-5-3-161B\*, 1dR tt; KAM1-B2-III2-5-3-161C, 1R ulna; KAM1-B3TP1-III2-6-8A-A\*, 1L tmt; KAM1-B3TP1-III2-6-8A-C\*, 1L rad; KAM1-B3TP1-III2-7-5A-D\*, 1pL tmt; KAM1-C3-III2-8-7-58A\*, 1pR tmt; KAM1-C3-III2-9-2-27\*, 1L cmc; KAM1-C4-III2-9-4-36A\*, 1dL tt; KAM1-C4-III2-9-4-36B\*, 1dR tmt; (NISP=12; MNI=5).

Layer IV1: KAM1-B2-IV1-7-1-23A\*, 1dR tmt; KAM1-B3TP1-IV1-8-3A-A\*, 1L tmt; KAM1-B3TP1-IV1-9-6QQ-A, 1dL tmt; KAM1-B3TP1-IV1-9-6QQ-B, 1L ulna; KAM1-B3TP1-IV1-10-4SS-A\*, 1dL tt; KAM1-B3TP1-IV1-11-1A-A\*, 1dL tt; KAM1-B4-IV1-10-3-1A\*, 2dR tt; KAM1-B4-IV1-10-3-1C\*, 1L cmc; KAM1-C3-IV1-10-4-45A\*, 1dL tmt; KAM1-C3-IV1-11-1-37A, 1R hum; KAM1-C4-IV1-11-3-62A\*, 1dR1pL tmt; KAM1-B2-IV2-10-3-20\*, 1dR tt; KAM1-B4-IV2-12-3-38A\*, 1dR tmt; KAM1-C4-IV2-12-4-1\*, 2dL tt; KAM1-C4-IV2-13-4-39A\*, 1dL tmt; (NISP=18; MNI=6, allowing for sub-layers).

Layer V: KAM1-B3TP1-V-14-4A-A, 1dL hum; KAM1-B3TP1-V-15-3A-A\*, 1dL tmt; KAM1-B4-V-13-4-1A\*, 1L tmt; KAM1-C3-V-14-3-23A, 1L fem; KAM1-C3-V-14-3-23B, 1R cmc; KAM1-C3-V-15-6-25A\*, 1dL tmt; (NISP=6; MNI=3).

*Nesofregetta fuliginosa* has a widespread breeding distribution in Eastern Polynesia on islands free from predators, including the Gambier Group (Thibault and Cibois, 2017). Metrics for these specimens are shown in Table 3.

Order PELECANIFORMES Sharpe, 1891

Family ARDEIDAE Leach, 1820

Genus *EGRETTE* T. Forster, 1817

*Egretta sacra* (Gmelin, 1789), Pacific Reef Egret

#### Material

**Nenega-Iti Site (190-12-AGA-3), Agakauitai Is.** (Total NISP=1; MNI=1).

**TABLE 3.** Summary statistics of measurements (mm) of *Nesofregatta fuliginosa* from Kitchen Cave, Gambier Group (KAM-1). Specimens used: see \* in specimen list. Abbreviations: DW, distal width; SW, minimum shaft width; SD, shaft depth at point of minimum SW; PW, proximal width; TL, Total length.

	Tibiotarsus			Tarsometatarsus		Radius		Carpometacarpus	
	DW	SW	SD	TL	PW	DW	TL	TL	PW
Mean	4.6	2.6	2.0	46.9	5.5	6.5	28.9	20.1	6.1
Min	4.3	2.4	1.9	45.8	5.1	6.2			6.1
Max	4.8	2.7	2.2	47.7	5.8	6.8			6.1
Std Dev	0.14	0.08	0.10	0.98	0.24	0.21			
Count	8	8	8	3	5	13	1	1	2

Layer II: AGA3-E9-II2-5-7-72C, 1dL tt; (NISP=1; MNI=1).

This species is widespread in the Pacific, with birds smaller in Eastern Polynesia than in the West (Thibault and Cibois, 2017). It is a common breeding species in the Tuamotu Archipelago, but in the Gambier Group, breeding is limited to a few pairs (Thibault and Cibois, 2017).

Family FREGATIDAE Degland & Gerbe, 1867  
Genus *FREGATA* Lacépède, 1799  
*Fregata ariel* (Gray, 1845), Lesser Frigatebird

#### Material

**Kitchen Cave (190-04-KAM-1), Kamaka Is.** (Total NISP=1; MNI=1).

Layer III: KAM1-C3-III2-7-2-56A, 1pR hum; (NISP=1; MNI=1).

This species breeds in widespread localities in Eastern Polynesia including the southern part of the Tuamotu Archipelago, but is only a visitor to the Gambier Group (Thibault and Cibois, 2017).

*Fregata minor* (Gmelin, 1789), Great Frigatebird

#### Material

**Onemea Site (190-12-TAR-6), Taravai Is.** (Total NISP=2; MNI=1).

Layer III: TAR6-TP11-III-2-65A-G, 1dL cmc, pt 1R furcula; (NISP=2; MNI=1).

**Kitchen Cave (190-04-KAM-1), Kamaka Is.** (Total NISP=3; MNI=2).

Layer III: KAM1-B4-III1-3-14-1A, 1R cor, 1dR ulna; KAM1-B3TP1-III2-6-8A-E, 1dL tt; (NISP=3; MNI=2, allowing for sub-layers).

This species breeds in widespread localities in Eastern Polynesia including the Gambier Group (Thibault and Cibois, 2017).

Order CHARADRIIFORMES Huxley, 1867  
Family LARIDAE Rafinesque, 1815  
Genus *GYGIS* Wagler, 1832  
*Gygis alba* (Sparman, 1786), White Tern

#### Material

**Onemea Site (190-12-TAR-6), Taravai Is.** (Total NISP=66; MNI=16).

Layer II: TAR6-TP02-II-6-22-A, 1pR cor; TAR6-TP02-II-6-22-B, 1 ant stern; TAR6-TP02-II-St.1-28, 1dR tt; TAR6-TP02-II-7-31-A, 1dL tt, 1L tmt; TAR6-TP02-II-7-31-B, 2dR1dL cor, 1R1L scap, 1 ant stern; TAR6-TP05-II-1-15A-A, 1pL cor; TAR6-TP05-II-2-25A-C, 1R cor; TAR6-TP05-II-3-31A-B, 1L cor; TAR6-TP05-II-6-55A-F, 1R cmc, 1R1L cor; TAR6-TP06-II-4-37A-B, 1R cmc; TAR6-TP11-II-1-6A-C, 1R scap; TAR6-TP11-II-9-56A-A, 1R cor; (NISP=20; MNI=6).

Layer II/III: TAR6-TP10-II/III-3-28A-D, 1L phal II.1; (NISP=1; MNI=1).

Layer III: TAR6-TP02-III-8-33-A, 2R1L dent, 2R2L art pt mand, 1R1L1pL cor, 2dR2dL tt, 1sR tmt; TAR6-TP02-III-8-33-B, 2 ant stern, 1 pmx, 1 mand tip, 1R1L scap, 2dR1dL cor; TAR6-TP02-III-8-35-A, 1pL hum, 1R tt, 1R1L cor; TAR6-TP02-III-8-35-B, 1R1L scap, 1 ant stern; TAR6-TP02-III-9-39-A, 2R1L cor; TAR6-TP02-III-9-39-B, 1R scap, 1 ant stern; TAR6-TP06-III-2-61A, 1pL hum; TAR6-TP06-III-3-64A-B, 1L cmc; TAR6-TP11-III-2-65A-L, 2R1L scap 2R1L cor; (NISP=44; MNI=8).

Unknown (Layer X): TAR6-TP10-X-St.1-34A-C, 1dL ulna; (NISP=1; MNI=1).

**Kitchen Cave (190-04-KAM-1), Kamaka Is.** (Total NISP=7; MNI=4).

Layer III: KAM1-B2-III1-4-3-107B, 1R phal II.1; KAM1-B4-III2-6-6-45A, 1dR ulna; KAM1-B4-III2-7-9-1A, 1R hum; (NISP=3; MNI=2, allowing for sub-layers).

Layer IV: KAM1-B2-IV1-7-1-23D, 1dR tt; KAM1-B3TP1-IV1-9-6QQ-C, 1L cmc; KAM1-B3TP1-IV1-10-4SS-B, 1pL ulna; (NISP=3; MNI=1).

Layer V: KAM1-B3TP1-V-15-3A-C, 1dL rad; (NISP=1; MNI=1).

This widespread species breeds in most part of Eastern Polynesia, the Gambier Group included (Thibault and Cibois, 2017).

Laridae magn. *Procelsterna cerulea* (Bennett, 1840), Blue Noddy

## Material

**Nenega-Iti Site (190-12-AGA-3), Agakauitai Is.** (Total NISP=2; MNI=1)

Layer II: AGA3-E13-II2-4-7-1A, 1R ulna; AGA3-E13-II2-4-7-1B, 1pR rad; (NISP=2; MNI=1).

**Kitchen Cave (190-04-KAM-1), Kamaka Is.** (Total NISP=6; MNI=3).

Layer III: KAM1-B4-III1-3-14-1C, 1dR tt; KAM1-C4-III2-6-3-8A, 1dR hum; KAM1-B3TP1-III2-7-5A-B, 1L cmc; KAM1-C4-III2-7-5-17A, 1R cor, 1R phal II.1; (NISP=5; MNI=2).

Layer VI: KAM1-B3TP1-VI-16-4A-B, 1pL rad; (NISP=1; MNI=1).

These bones are too fragmentary for a certain taxonomic assignment from morphology, but they are most similar to bones of terns and based on size are likely to be from *Procelsterna cerulea*, which is widespread in the Tuamotu Archipelago (Thibault and Cibois, 2017). However, the Grey Noddy, *P. albigitta*, has a more southerly breeding distribution that includes the Austral and Pitcairn groups (Dickinson and Remsen, 2013) and, in the Gambier Group, birds have a plumage intermediate between the two taxa (Thibault and Cibois, 2017), precluding a certain specific assignment, if these taxa are indeed distinct.

## Summary

The NISP and MNI generated by taxa for each stratigraphic unit are given in Appendix 1 for the faunas from the three sites from the Gambier Group reported here, Onemea (Taravai Is.), Nenega-Iti Site (Agakauitai Is.) and Kitchen Cave (Kamaka Is.). Table 4 provides a summary of the total NISP and MNI for each taxon, calculated by totalling the MNI from all stratigraphic units by site. A total of 647 bones from 192 individuals were identified to family-level or lower, and were distributed by site as follows: Onemea 419 bones, MNI of 102; Nenega-Iti Site 139 bones, MNI of 44; Kitchen Cave Site 89 bones MNI of 46. These minimally represent 15 species of seabirds and six of land birds, one being the prehistorically introduced junglefowl (*Gallus gallus*). With the addition of the previously identified bones (Table 5), the proportions of seabirds to land birds and of the various families was calculated and shown in Figure 4. This reveals that seabirds dominate the faunas and among those, procellariids predominate. Land bird faunas are too small for discernment of meaningful trends, but columbids dominate the main assemblages.

## DISCUSSION

The new investigations reported here considerably add to the known prehistoric avifaunal record for the Gambier Group, which until now was based on 215 identified bones (Steadman and Justice, 1998; Steadman, 2006). Our new data are compiled in Table 5 with those of Steadman and Justice (1998), and the modern and historic record of birds from the Gambier Group (Thibault and Cibois, 2017), to estimate the former diversity of breeding taxa.

We report minimally 14 species of seabird in the prehistoric record of the Gambier Group (Table 5), including three (*Pseudobulweria* sp., and *Pterodroma* magn. *P. heraldica* and *Pt.* magn. *P. leucoptera*) that have not been previously recorded in the archaeological faunas, although Steadman and Justice (1998) noted indeterminate small to large species of *Pterodroma*. Of these oceanic birds, minimally seven are procellariids (Figure 5), with the proviso that we consider the previous records of *Bulweria* sp. cf. *B. fallax* and *Puffinus lherminieri* to be equivalent to *Pseudobulweria* sp. indet. and *Puffinus bailloni* respectively. However, we reiterate that because of the cryptic nature of procellariids, more than one species may be represented by our taxa that reflect size classes, e.g., *Pterodroma* magn. *leucoptera* and *P.* magn. *heraldica*. For the latter, *Pterodroma ultima*, *P. neglecta* and *P. heraldica* all breed in the Gambier Group, although others, as noted in the Introduction (above), are probable visitors (Thibault and Cibois, 2017). In order to conservatively establish the diversity of former breeding seabirds, we assume that the taxon *Pterodroma* magn. *leucoptera*, which was relatively abundant in the fauna from Onemea (Taravai), represents one breeding species, although several similar-sized small *Pterodroma* species certainly feed seasonally in the oceans about the Gambier Group (see Introduction). This species is likely to be *Pterodroma brevipes*, or a closely related taxon, as this species has the closest breeding populations today (Thibault and Cibois, 2017).

We do not accept the interpretation that the record of *Puffinus tenuirostris* reflects an extirpated population (Steadman, 2006: 237), as this species breeds in the millions in cool-temperate climates about Australia and migrates to the northern Pacific annually, passing on their return through eastern Polynesia (Marchant and Higgins, 1993), as noted by Steadman and Justice (1998). It is therefore likely that the few birds represented, if correctly identified, are from birds caught when

**TABLE 4.** Summary of data for bird bones identified from each site in this study, showing NISP (MNI), where NISP is the Number of Identifiable Specimens and MNI the Minimum Number of Individuals, determined separately for each layer and summed for the site. Taxa in brackets are not necessarily different from those more precisely identified. † is extinct.

Taxa	Onemea Site (Taravai)	Nenega-Iti Site (Agakaitai)	Kitchen Cave Site (Kamaka)	Total NISP (MNI)
<b>Seabirds</b>				
† <i>Pseudobulweria</i> sp.	158 (26)	82 (18)	-	240 (44)
<i>Pterodroma</i> magn. <i>P. heraldica</i>	55 (8)	6 (3)	4 (2)	65 (13)
<i>Pterodroma</i> magn. <i>P. leucoptera</i>	22 (5)	-	-	22 (5)
( <i>Pterodroma</i> sp. indet.)	7 (3)	1 (1)	1 (1)	9 (5)
<i>Puffinus</i> magn. <i>P. bailloni</i>	26 (8)	6 (4)	11 (6)	43 (18)
<i>Puffinus nativitatis</i>	28 (5)	9 (3)	1 (1)	38 (9)
( <i>Puffinus</i> sp. indet.)	-	1 (1)	-	1 (1)
<i>Ardenna pacifica</i>	12 (4)	3 (1)	2 (2)	17 (7)
( <i>Procellariidae</i> spp.)	11 (7)	17 (5)	1 (1)	28 (13)
<i>Nesofregatta fuliginosa</i>	1 (1)	-	37 (15)	38 (16)
<i>Phaethon lepturus</i>	20 (4)	5 (2)	8 (5)	33 (11)
<i>Phaethon rubricauda</i>	9 (3)	-	1 (1)	10 (4)
<i>Fregata ariel</i>	-	-	1 (1)	1 (1)
<i>Fregata minor</i>	2 (1)	-	3 (2)	5 (3)
<i>Gygis alba</i>	66 (16)	-	7 (4)	73 (20)
Larid magn. <i>Procelsterna cerulea</i>	-	2 (1)	6 (3)	8 (4)
<b>Land birds</b>				
<i>Gallus gallus</i>	2 (2)	2 (2)	-	4 (4)
† <i>Bountyphaps</i> sp. cf. <i>B. obsoleta</i>	-	1 (1)	4 (2)	5 (3)
† <i>Ducula tihonireasini</i>	6 (3)	-	-	6 (3)
<i>Ptilinopus</i> sp. indet.	3 (3)	-	-	3 (3)
(Columbidae gen. et sp. indet.)	-	-	3 (1)	3 (1)
<i>Egretta sacra</i>	-	1 (1)	-	1 (1)
Total determinate NISP (MNI)	419 (102)	139(44)	89(46)	647 (192)

attracted to the colonies of resident procellariids as has been regularly reported (e.g., Warham, 1990; Imber et al., 1991).

To establish the likely extent of the actual diversity of breeding seabirds, we have added to Table 5 other taxa known to breed in the Gambier Group (Thibault and Cibois, 2017). This results in the addition of three sulids and the tern *Anous minutus*. Steadman (2006) listed *Pterodroma les-soni* from the Gambier Group, but this species is a non-breeding visitor and so we exclude it from the list of resident seabirds. Similarly, all other procellariiform non-breeding visitors to Eastern Polynesian waters near the Gambier Group, e.g., *Pelagodroma marina*, *Fregatta grallaria*, *Macronectes giganteus*, *Pterodroma cookii*, *Pt. atrata*, *Pt. alba*, *Pt. externa*, *Pt. cervicalis*, *Pt. macroptera*, *Procellaria cinerea*, *Pr. aequinoctialis*, *Pr. parkin-*

*soni*, *Ardenna grisea*, *A. carneipes*, [see Thibault and Cibois (2017)] are not listed. All might be expected to contribute rare specimens to an avifauna in the region. In summary, the 19 oceanic seabird taxa listed as breeding in Table 5 equate minimally to 21 species likely to have been breeding in the Gambier Group.

There are perhaps minimally a further 12 species of land birds in the original breeding avifauna of the Gambier Group. Dominating the prehistoric record are rare bones of five species of columbids. Two of these are extinct and newly recorded for the Group, an imperial pigeon *Ducula tihonireasini* n. sp. and *Bountyphaps* sp. cf. *B. obsoleta* known originally from Henderson Island. The new species of *Ducula* is most likely a local endemic species given that it differs from congeneric taxa on Henderson Island and in the Marquesas (Worthy and

**TABLE 5.** Past and present distribution of birds in the Gambier Group. Data is from this study (bold) with additional data for Aukena, Mangareva and Kamaka from Steadman and Justice (1998) in non-bold text. Species status is from Thiabault and Cibois (2017), B, breeding; H, historic record; M, migrant; e, extirpated; E, extinct; v, visitor. MNI is between brackets. MNI for the data from Steadman and Justice (1998) is derived by the separate additive treatment of each layer and sub-layer, but because elements were not reported to side, MNI for an element within a stratum is assessed by dividing the reported number by two, so 4 humeri would be MNI=2. Taxa in brackets are not necessarily different from those more precisely identified. Taxa in bold are introduced species. † means extinct, †B is extinct breeding population.

Taxa	Modern Status	Prehistoric Records					Total
	Gambier Group	Agakauitai	Aukena	Kamaka	Mangareva	Taravai	
<b>OCEANIC SEABIRDS</b>							205+ <b>632</b> (93+ <b>172</b> )
<b>Procellariidae</b>							135+ <b>464</b> (52+ <b>116</b> )
† <i>Pseudobulweria</i> sp.	E, B	<b>82 (18)</b>	?	-	-	<b>158 (26)</b>	240 (44)
<i>Bulweria</i> sp. cf. <i>B. fallax</i> <sup>1</sup>	-	-	1 (1)	-	-	-	1 (1)
<i>Pterodroma</i> magn. <i>P. heraldica</i>	B	<b>6 (3)</b>	?	4 (2)	-	<b>55 (8)</b>	65 (13)
<i>Pterodroma</i> magn. <i>P. leucoptera</i>	v, †B	-	-	-	-	<b>22 (5)</b>	22 (5)
( <i>Pterodroma</i> sp.)	-	<b>1 (1)</b>	7 (3)	34+1 (10+1)	-	<b>7 (3)</b>	41+9 (13+5)
<i>Puffinus</i> magn. <i>P. bailloni</i>	B	<b>6 (4)</b>	-	11 (6)	-	<b>26 (8)</b>	<b>43 (18)</b>
<i>Puffinus lherminieri</i> <sup>2</sup>	-	-	1 (1)	16 (9)	-	-	17 (10)
<i>Puffinus nativitatis</i>	B	<b>9 (3)</b>	9 (3)	44+1 (12+1)	-	<b>28 (5)</b>	53+ <b>38</b> (15+9)
( <i>Puffinus</i> sp.)	-	<b>1 (1)</b>	-	1 (1)	-	-	1+1 (1+1)
<i>Ardenna pacifica</i>	B	<b>3 (1)</b>	-	5+2 (2+2)	-	<b>12 (4)</b>	5+ <b>17</b> (2+7)
<i>Ardenna tenuirostris</i>	M	-	2 (1)	4 (3)	-	-	6 (4)
(Procellariidae spp.)	-	<b>17 (5)</b>	-	11+1 (6+1)	-	<b>11 (7)</b>	11+ <b>29</b> (6+13)
<b>Oceanitidae</b>							
<i>Nesofregatta fuliginosa</i>	B	-	-	4+ <b>37</b> (4+15)	-	<b>1 (1)</b>	4+ <b>38</b> (4+16)
<b>Phaethontidae</b>							32+ <b>43</b> (15+13)
<i>Phaethon lepturus</i>	B	<b>5 (2)</b>	-	13+8 (7+5)	-	<b>20 (4)</b>	13+ <b>33</b> (7+11)
<i>Phaethon rubricauda</i>	B	-	4 (2)	15+1 (6+1)	-	<b>9 (1)</b>	19+ <b>10</b> (8+2)
<b>Sulidae</b>							
<i>Sula dactylatra</i>	B	-	-	-	-	-	
<i>Sula leucogaster</i>	B	-	-	-	-	-	
<i>Sula sula</i>	B	-	-	-	-	-	
<b>Fregatidae</b>							13+ <b>6</b> (9+3)
<i>Fregata ariel</i>	v	-	2 (1)	1 (1)	-	-	2+1 (1+1)
<i>Fregata minor</i>	B	-	-	11+ <b>3</b> (8+1)	-	<b>2 (1)</b>	11+ <b>5</b> (8+2)
<b>Laridae</b>							21+ <b>81</b> (14+24)
<i>Thalasseus bergii</i>	v, ?B	-	-	-	-	-	
<i>Anous minutus</i>	B	-	-	-	-	-	
<i>Anous stolidus</i>	B	-	-	6 (4)	-	-	6 (4)
<i>Procelsterna cerulea</i>	B	-	-	1 (1)	-	-	1 (1)
Larid magn. <i>Procelsterna cerulea</i>	-	<b>2 (1)</b>	-	6 (3)	-	-	8 (4)
<i>Gygis alba</i>	B	-	-	14+7 (9+4)	-	<b>66 (16)</b>	14+ <b>73</b> (9+20)

TABLE 5 (continued).

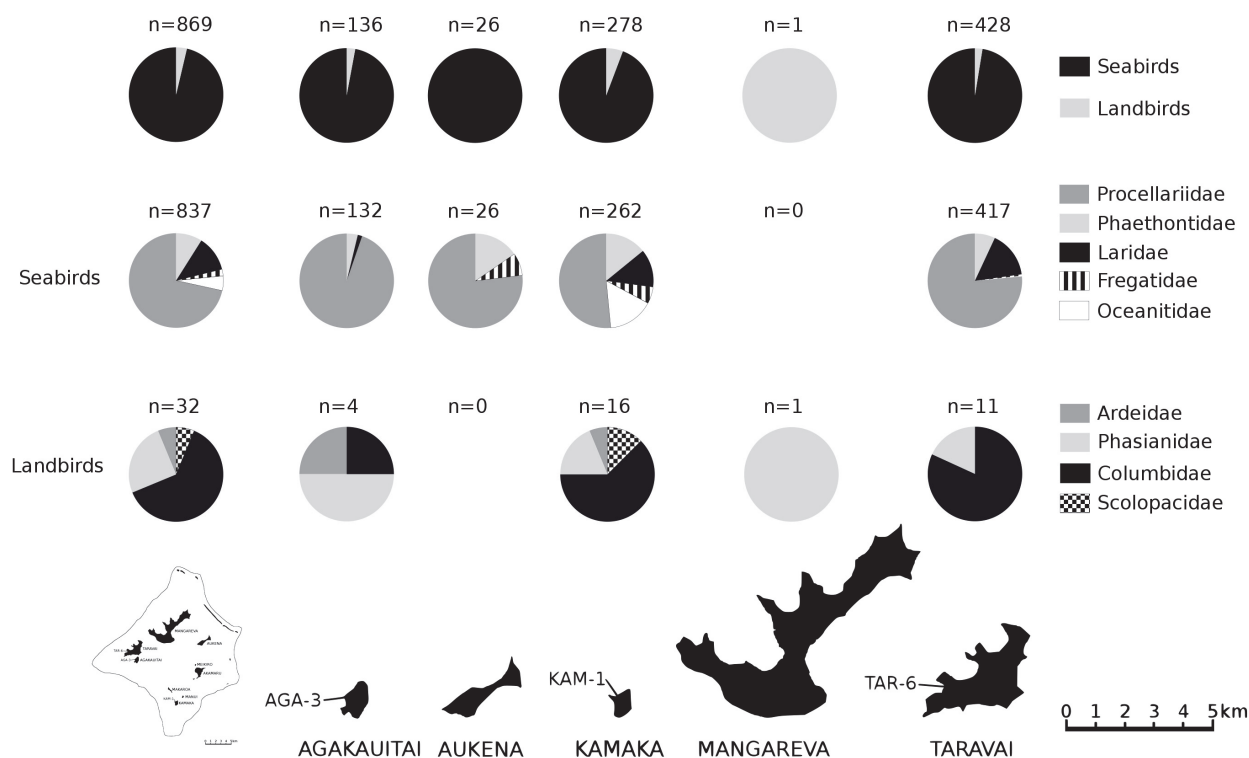
Taxa	Modern Status Gambier Group	Prehistoric Records					Total
		Agakauitai	Aukena	Kamaka	Mangareva	Taravai	
<b>LAND BIRDS</b>							10+22 (9+15)
<b>Phasianidae</b>							
<i>Gallus gallus</i>	B, H	2 (2)	-	3 (3)	1 (1)	2 (2)	4+4 (4+4)
<b>Columbidae</b>							3+17 (3+10)
† <i>Bountyphaps</i> sp. cf. <i>B. obsoleta</i> <sup>3</sup>	E	1 (1)	-	2+4 (2+2)	-	-	2+5 (2+3)
† <i>Alopecoenas erythropterus</i>	e, ?H	-	-	1 (1)	-	-	1 (1)
† <i>Ducula tihonireasini</i>	E, H	-	-	-	-	6 (3)	6 (3)
† <i>Ptilinopus</i> sp. indet.	e, H	-	-	-	-	3 (3)	3 (3)
† (Columbidae genera indet.)	E	-	-	3 (1)	-	-	3 (1)
<i>Columba livia</i>	B	-	-	-	-	-	-
<b>Ardeidae</b>							
<i>Egretta sacra</i>	B	1 (1)	-	1 (1)	-	-	1+1 (1+1)
<b>Rallidae</b>							
<i>Zapornia tabuensis</i>	e, H	-	-	-	-	-	-
<b>Charadriidae</b>							
<i>Pluvialis fulva</i>	M	-	-	-	-	-	-
<b>Scolopacidae</b>							
<i>Numenius tahitiensis</i>	M	-	-	2 (1)	-	-	2 (1)
<i>Tringa incana</i>	M	-	-	-	-	-	-
<i>Prosobonia parvirostris</i>	e, H	-	-	-	-	-	-
<i>Calidris alba</i>	M	-	-	-	-	-	-
<b>Cuculidae</b>							
<i>Urodynamis taitensis</i>	M	-	-	-	-	-	-
<b>Alcedinidae</b>							
† <i>Todiramphus gambieri</i>	E, H	-	-	-	-	-	-
<b>Acrocephalidae</b>							
† <i>Acrocephalus astrolabii</i>	E, H	-	-	-	-	-	-
<i>Acrocephalus atyphus</i>	v, H	-	-	-	-	-	-
<b>Pachycephalidae</b>							
" <i>Pachycephala</i> " <i>gambierana</i>	E?, H?	-	-	-	-	-	-

1. We consider it most likely that this specimen identified by Steadman and Justice (1998) belongs to the taxon identified here as *Pseudobulweria* sp. indet.

2. The bones referred by Steadman (2006) to *Puffinus lherminieri* were identified before separation of that Atlantic Ocean taxon from the Pacific birds, so they would now be listed in our taxon *Puffinus* magn. *P. bailloni*. *Puffinus bailloni* is a common breeding bird in the Gambier Group but the similar sized *P. auricularis myrtae* is a likely visitor to the area and would not be distinguished on bones.

3. We consider it more likely (as discussed above) that the bones referred to *Alopecoenas* (= *Gallicolumba*) *nui* by Steadman and Justice (1998) from Kamaka Island belong to the same taxon as those we refer to *Bountyphaps* sp. cf. *obsoleta*, so they are included here.





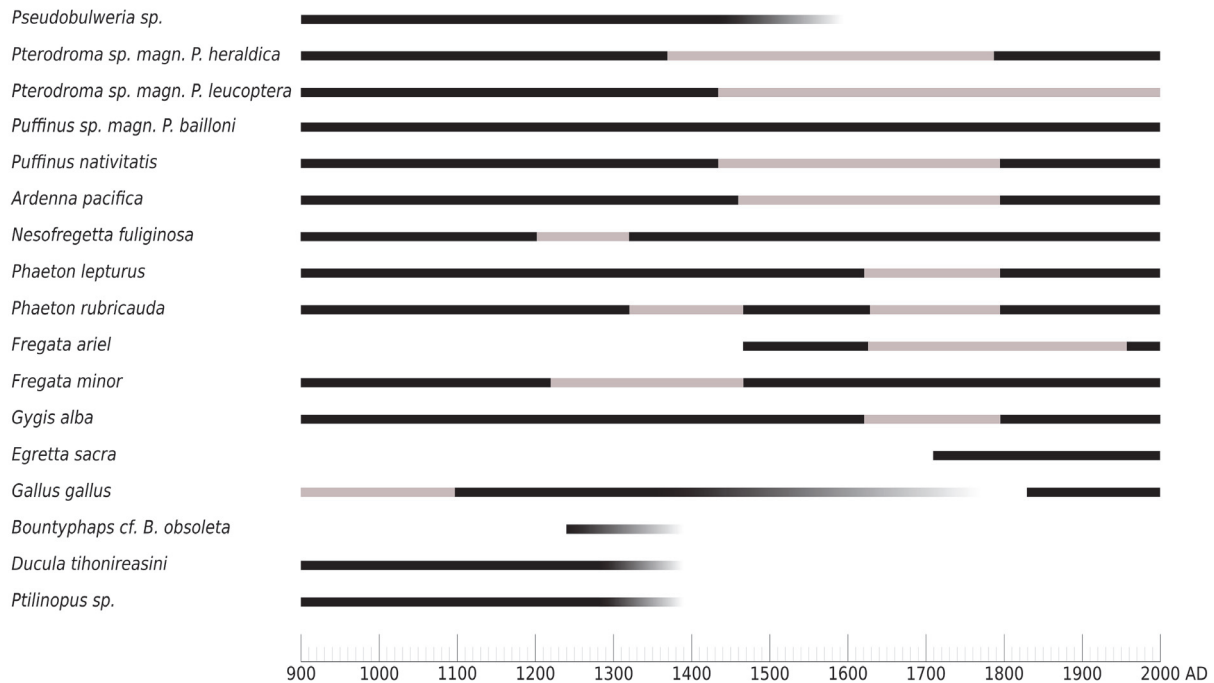
**FIGURE 4.** Relative proportions of seabirds and land birds, and of the constituent families for each group, for the Gambier Group as a whole (left) and individual islands/sites. Data is based on the 647 bones reported herein plus the 215 specimens previously reported as compiled in Table 5.

Wrapp, 2008). However, the same may not be the case for *Bountyphaps*, under which taxon we list the specimens identified as *Gallicolumba nui* by Steadman and Justice (1998), see above in species accounts. Caution is required in interpreting the presence of *Bountyphaps* in sites on Kamaka and Agakauitai as representing an autochthonous population for two reasons. Firstly, these sites are not as old (Anderson et al., 2003; Kirch et al., 2010) as the Onemea site on Taravai, where *Bountyphaps* was not found despite a large sample of bird bones. Secondly, the early Polynesian colonisers were adept at transporting birds, having introduced *Gallus* to the Gambier Group in the earliest period of colonisation (Green and Weisler, 2004) and there is ample evidence of various commodities being transported back and forth from the Pitcairn Group around AD 1000 (Green and Weisler, 2002). This includes basalt tools with a Pitcairn source found in Aukena Rockshelter (GA-1) and on Agakauitai Island (Green and Weisler, 2002). This evidence of return voyaging from the Pitcairn Group makes it at least possible that the *Bountyphaps*

bones may represent birds imported from Henderson Island.

A further three smaller columbids have been extirpated from the Gambier Group but survive elsewhere: a ground dove *Alopecoenas erythropterus*, which possibly was reported historically (Thibault and Cibois, 2017), a fruit dove *Ptilinopus* sp. indet. and a species that perhaps was a cuckoo dove *Macropygia* sp.

The columbids are all rare in the fauna and occur only in the oldest layers (Figure 5), so it is highly likely that other terrestrial taxa have escaped detection due to the relatively small sample sizes from the earliest stratigraphic contexts. The only other native land bird in the prehistoric record is the heron *Egretta sacra*, which still is a breeding species in the Gambier Group. To these prehistorically known land birds, a further six presumed breeding resident species only recorded historically (H – Table 5), from the 18<sup>th</sup> to early 20<sup>th</sup> century) can be added (a rail, a shorebird – *Prosobonia*, a kingfisher and three passerines) for a total of 12 breeding species. It is notable that there are no fossil rails in the prehistoric record of the Gam-



**FIGURE 5.** The recorded presence (black) or inferred presence but no data for (grey) of selected taxa through the archaeological record to the present in the Gambier Group showing how some taxa survived only into the fourteenth and fifteenth centuries.

bier Group, despite an historic record of spotless crane (*Zapornia tabuensis*) in the Gambier Group, and of this and other crakes having a widespread extant and prehistoric presence in Eastern Polynesia (Steadman, 2006; Thibault and Cibois, 2017). Similarly, it is surprising that no parrots have been found, despite the present and former abundance of several species of *Vini* lorikeet in the Tuamotu Archipelago and the Marquesas and of *V. stepheni* on Henderson in the Pitcairn Group (Steadman, 2006; Thibault and Cibois, 2017). Alongside these 12 breeding land birds, we list four migratory charadriid and scolopacid shorebirds, given that they live and feed on land in the coastal areas, and the migrant cuckoo (*Urodynamis*) known from contemporary observations (Table 5), although *Numenius* was recorded in the prehistoric record by Steadman and Justice (1998).

In summary, there were minimally 32 breeding species (20 oceanic seabirds, 12 land birds) in the pre-human avifauna of the Gambier Group. With the addition of five regular migrants (a cuckoo and four shorebirds), a total of minimally 37 species contributed to the resident avifauna in the Gambier Group. Of these, at least seven species, a seabird (a *Pseudobulweria* sp.), three columbids (one conservatively identified as *Bountyphaps obsoleta*, first

described from Henderson Island (Worthy and Wragg, 2008), the new species *Ducula tihonireasini* described herein, and an undetermined taxon that possibly is a species of *Macropygia*) and three other land birds, are extinct. Five others have had their Gambier breeding populations extirpated (one seabird – *Pterodroma* magn. *Pt. leucoptera*, *Prosoptionia parvirostris*, a rail, and two columbids). Of these columbids, the *Ptilinopus* sp. probably represents an extirpated population of *Ptilinopus coralensis* (Atoll Fruit Dove), which is widespread in the Tuamotu Archipelago; it has been recorded as a vagrant in the Gambier Group (Thibault and Cibois, 2017). Similarly, *Alopecoenas erythropterus*, while rare now, historically had a widespread breeding range in the Tuamotu Archipelago and in the Society Group (Thibault and Cibois, 2017). To these taxa can be added *Gallus gallus*, whose bones were rare in all sites but were found in the deeper layers, corroborating the observations of Steadman and Justice (1998) and indicating an early Polynesian introduction to the Gambier Group. However, this species was extirpated prior to European contact (Green and Weisler, 2004).

The size of our Gambier bird bone sample is small compared to other archaeological avifaunal assemblages, e.g., 42,213 bird bones from Hen-

derson Island (Wragg, 1995), so it probably provides a still limited view of the past avifauna. Nevertheless, it suffices to show that the composition of original avifauna, especially of the seabirds, differed between islands in the Gambier Group, as it does currently (Waugh et al., 2013). For instance, on the adjacent Taravai and Agakauitai islands, *Pterodroma* magn. *Pt. heraldica* and *Pseudobulweria* sp. were common, but both were respectively, rare or absent on Kamaka Island. In contrast, *Nesofregatta fuliginosa* was abundant on Kamaka, while represented by just one bone on Taravai and none on Agakauitai. This pattern almost certainly reflects local breeding populations on these islands, and so colonies of a medium-sized petrel and a *Pseudobulweria* sp. were almost certainly on the adjacent islands on Taravai and Agakauitai, but not on Kamaka, a small species of *Pterodroma* only bred on Taravai, and *N. fuliginosa* only had a colony on Kamaka. In contrast, three species of shearwater, including a small species that was most likely *P. bailloni*, *Puffinus nativitatis*, and *Ardenna pacifica* probably bred on all three islands. The numbers of terrestrial birds are probably too small to determine whether there was any regionalisation of species within the Gambier Group. The observation that *Ducula* bones were only found on Taravai and those of *Bountyphaps* mainly on Kamaka is suggestive that these two islands had discrete columbid faunas. However, a *Bountyphaps* bone was also found on Agakauitai, which is very close to Taravai, thus it is most unlikely that Taravai really lacked *Bountyphaps*, and the apparent differences probably relate to the small sample sizes available of land birds.

Overall, the Gambier Group avifauna is most similar to that from prehistoric Henderson Island (Wragg, 1995; Steadman, 2006). Seabirds dominate the assemblages and land birds are relatively rare (2.3 – 11.8% NISP; Steadman, 2006), with the higher values deriving from the non-archaeological assemblages reported by Wragg (1995). These higher numbers of land birds include *Porzana atra* as 4.4% of NISP, and four species of pigeon and one *Vini* parrot, and support the contention that the archaeological sample from the earliest human-contact layers for the Gambier Group is as yet too small to reveal the rail fauna and the relative frequencies of the represented columbids. The prehistoric avifaunas from the Marquesas are also similar to those from the Gambier Group in the rel-

ative proportions of seabirds and their species diversity (Steadman, 2006). However, the land bird fauna is notably more diverse, with three rallids in two genera (*Gallirallus*, *Zapornia* [as *Porzana*]), six columbids in four genera, and three species of *Vini* parrots (Steadman, 2006). Heading west from the Gambier Group, the land bird faunas become increasingly diverse when large samples are available, with the Society Islands having three genera of rails among 25 species of land birds, Mangaia Island in the Cook Islands three genera and six species of rails among 27 land bird species (Steadman, 2006). Therefore, it is to either the Marquesas or Henderson Island that we can turn to estimate what is likely to be found in the Gambier Group when further archaeological excavations expand the recovery of larger and first contact avifaunas. Minimally one, but probably two rails and at least one *Vini* parrot arguably await discovery, and more bones will be required to better elucidate the columbids formerly present.

#### ACKNOWLEDGEMENTS

Excavations in the Gambier Islands that produced the avifaunal assemblages described herein were supported by grants from the U.S. National Science Foundation (grant no. BCS-1030049), and from the Wenner-Gren Foundation for Anthropological Research (grant no. 7177) to PVK. Permission to carry out archaeological research in the Gambiers was granted by the Ministry of Culture and Service de la Culture et du Patrimoine of the Government of French Polynesia, by the Délégation à la Recherche de la Polynésie Française, and by the Maire of the Gambier Commune. For assistance in arranging permits and facilitating the fieldwork, PVK thanks P. Frogier, J. Meyer, T. Maric, B. Mou, M. Richeton, the late T. Paeamara, E. and D. Sanford, R. Reasin, T. Reasin, and in particular the late T. Reasin. PVK thanks E. Conte and G. Molle for their assistance in helping to direct the excavations. École Normale Supérieure de Lyon, France, facilitated the internship for SR at Flinders University that supported this research. For access to skeletal material, we thank P. Horton (South Australian Museum, Adelaide, South Australia); K. Roberts (Museum Victoria, Melbourne, Victoria); and A. Tennyson (Museum of New Zealand Te Papa Tongarewa, Wellington, New Zealand).

## REFERENCES

- Anderson, A. 2001. The chronology of prehistoric colonization in French Polynesia, pp. 247-252. In Stevenson, C.M., Lee, G., and Morin, F.J. (eds.), *Pacific 2000*. Proceedings of the Fifth International Conference on Easter Island and the Pacific. Easter Island Foundation, The Easter Island Foundation, Bearsville Press, Los Osos, CA, 575 pp.
- Anderson, A., 2003. Initial human dispersal in Remote Oceania: Pattern and explanation, pp 71-84. In Sand, C. (ed.), *Pacific Archaeology: Assessments and Prospects*. Le Cahiers de l'Archéologie en Nouvelle-Calédonie, No. 15. Service des Musées de du Patrimoine, Noumea.
- Anderson, A., Conte, E., Kirch, P.V., and Weisler, M.I. 2003. Cultural chronology in Mangareva (Gambier Islands), French Polynesia: Evidence from recent radiocarbon dating. *The Journal of the Polynesian Society*, 112(2):119-140. <http://www.jstor.org/stable/20707144>
- Anderson, A. and Sinoto, Y. 2002. New radiocarbon ages of colonization sites in East Polynesia. *Asian Perspectives*, 41:242-257. <https://doi.org/10.1353/asi.2003.0002>
- Athens, J.S., Rieth, T.M., and Dye, T.S. 2014. A paleoenvironmental and archaeological model-based age estimate for the colonization of Hawai'i. *American Antiquity*, 79:144-155. <https://doi.org/10.7183/0002-7316.79.1.144>
- Balouet, J.C. and Olson, S.L. 1987. An extinct species of giant pigeon (Columbidae: *Ducula*) from archaeological deposits on Wallis (Uvea) Island, South Pacific. *Proceedings of the Biological Society of Washington*, 100:769-775. <https://archive.org/details/biostor-74779>
- Beechey, F.W. 1832. *Narrative of a voyage to the Pacific and Beering's Strait, to cooperate with the Polar Expeditions: Performed in His Majesty's Ship Blossom, under the command of Captain F. W. Beechey, R.N., F.R.S. in the years 1825, 26, 27, 28*. Carey and Lea, Philadelphia. <https://doi.org/10.5962/bhl.title.50863>
- Bennett, F.D. 1840. *Narrative of a whaling voyage round the globe, from the year 1833 to 1836*. Comprising sketches of Polynesia, California, the Indian Archipelago, etc. with an account of southern whales, the sperm whale fishery, and the natural history of the climates visited. Vol. 2, 395 pp, Richard Bentley, London. <https://www.biodiversitylibrary.org/item/59619>
- BirdLife International 2017. IUCN Red List for birds. Downloaded from <http://www.birdlife.org> on 23/06/2017.
- Boddaert, P. 1783. *Table des planches enluminées d'histoire naturelle de M. D'Aubenton: avec les dénominations de M.M. de Buffon, Brisson, Edwards, Linnaeus et Latham, précédé d'une notice des principaux ouvrages zoologiques enluminés*. Utrecht: 1-58. <https://doi.org/10.5962/bhl.title.39835>
- Bonaparte, C.L. 1856. Espèces nouvelles d'oiseaux d'Asie et d'Amérique, et tableaux paralléliques des pélagiens ou Gaviae. *Comptes Rendus Hebdomadaires des Séances de l'Académie des Sciences, Paris*, 42:764-776. <https://www.biodiversitylibrary.org/item/16554>
- Bonaparte, C.L. 1857. *Conspectus Generum Avium*. Volume 2. Lugduni Batavorum & E.J. Brill, Leiden, Netherlands, 232 pp. <https://www.biodiversitylibrary.org/item/141377>
- Bonvallot, J. and Barszczus, H.G. (collab.) 1993. La géologie structurale : planche 25. In Dupon, J.-F. (ed.), Bonvallot, J. (ed.), Vigneron, E. (ed.), Gay, J.C. (collab.), Morhange, C. (collab.), Ollier, C. (collab.), Peugniez, G. (collab.), Reitel, B. (collab.), Yon-Cassat, F. (collab.), Danard, M. (coord.), and Laidet, D. (éd.). *Atlas de la Polynésie Française*. ORSTOM, Paris. <http://www.documentation.ird.fr/hor/fdi:38860>
- Brandt, J.F. 1840. *Beitriige zur Kenntniss der Naturgeschichte der V6gel mit besonderer Beziehung auf Skeletbau und vergleichende Zoologie*. [Read 17 March 1837]. Mémoires de l'Académie Imp. Sci. St. Pétersbourg, Ser. 6. Sci. Math., Phys. Nat. 5(2) Sci. Nat., 3:91-237, 18 plates. <https://doi.org/10.5962/bhl.title.49179>
- Brisson, M.J. 1760. *Ornithologie, ou, Méthode contenant la division des oiseaux en ordres, sections, genres, especes & leurs variétés : a laquelle on a joint une description exacte de chaque espece, avec les citations des auteurs qui en ont traité, les noms quils leur ont donnés, ceux que leur ont donnés les différentes nations, & les noms vulgaires*. Vol 1. Ad Ripam Augustinorum, apud Cl. Joannem-Baptistam Bauche, bibliopolam, ad Insigne S. Genovesae, & S. Joannis in Deserto, Parisiis. <https://www.biodiversitylibrary.org/bibliography/51902>
- Brooke, M. de L. 1995a. The breeding biology of the gadfly petrels *Pterodroma* spp. of the Pitcairn Islands: characteristics, population sizes and controls. *Biological Journal of the Linnean Society*, 56:213-231. <https://doi.org/10.1111/j.1095-8312.1995.tb01086.x>

- Brooke, M. de L. 1995b. The modern avifauna of the Pitcairn Islands. *Biological Journal of the Linnean Society*, 56:199-212. <https://doi.org/10.1111/j.1095-8312.1995.tb01085.x>
- Burley, D., Weisler, M.I., and Zhao, J-x. 2012. High precision U/Th dating of first Polynesian settlement. *PLoS ONE*, 7(11): e48769. <https://doi.org/10.1371/journal.pone.0048769>
- Christidis, L. and Boles, W.E. 2008. *Systematics and taxonomy of Australian birds*. Collingwood, Victoria, Australia: CSIRO Publishing.
- Cibois A, Thibault, J-C. Bonillo, C., Filardi, C.E., and Pasquet, E. 2017. Phylogeny and biogeography of the imperial pigeons (Aves: Columbidae) in the Pacific Ocean. *Molecular Phylogenetics and Evolution*, 110:19-26. <https://doi.org/10.1016/j.ympev.2017.02.016>
- Conte, E. and Anderson, A.J. 2003. Radiocarbon ages for two sites on Ua Huka, Marquesas. *Asian Perspectives*, 42:155-160. <https://doi.org/10.1353/asi.2003.0018>
- Conte, E. and Kirch P.V. (eds.) 2004. *Archaeological investigations in the Mangareva Islands (Gambier Archipelago), French Polynesia*. Contribution of the Archaeological Research Facility, No. 62, University of California, Berkley. <https://escholarship.org/uc/item/8n28k36r>
- Conte, E. and Kirch, P.V. 2008. One thousand years of human environmental transformation in the Gambier Islands (French Polynesia), pp 253-264. In Clark G., Leach, F., and O'Connor, S (eds.), *Terra Australis* 29, Islands of Inquiry, Colonisation, seafaring and the archaeology of maritime landscapes. <http://press.anu.edu.au?p=26551>
- Conte, E., Kirch, P.V., Weisler, M.I., and Anderson, A.J. 2004. Archaeological field investigations, pp. 33-93. In Conte, E. and Kirch P.V. (eds.), *Archaeological Investigations in the Mangareva Islands (Gambier Archipelago), French Polynesia*. Contribution of the Archaeological Research Facility, No. 62, University of California, Berkley. <https://escholarship.org/uc/item/8n28k36r>
- Cooper, J. and Tennyson, A.J.D. 2008. Wrecks and residents: the fossil gadfly petrels (*Pterodroma* spp.) of the Chatham Islands, New Zealand. *Oryctos*, 7:223-244.
- Daudin, F.M. 1802. Tableaux des sous-classes, divisions, sous-divisions, orders et genres des Oiseaux, par Le C. Lacépède; avec l'indication de toutes les espèces décrites par Buffon, et leur distribution dans chacun des genres, pp. 198-346, In Buffon, G.L.L. 1799-1802. *Histoire naturelle, Dédiée au citoyen Lacépède, member de l'Institut National*. *Quadrupedes*, vol. 14, F. Dufart, Paris. <https://www.biodiversitylibrary.org/item/131624>
- Degland, C.D. and Gerbe, Z. 1867. *Ornithologie Européenne ou catalogue descriptive, analytique et raisonné des oiseaux observés en Europe*, 2<sup>nd</sup> Ed. Vol. 2, 637 pp, J.B. Baillière et Fils, Paris. <https://www.biodiversitylibrary.org/item/32502>
- del Hoyo, J., Elliott, A., Sargatal, J., Christie, D.A., and de Juana, E. (eds.) 2017. *Handbook of the Birds of the World Alive*. Lynx Edicions, Barcelona. [retrieved from <http://www.hbw.com/> on 23 June 2017].
- Dickinson, E.C. and Remsen, J.V. 2013. *The Howard and Moore complete checklist of the birds of the world*. Aves Press, Eastbourne, UK.
- Forster, T. 1817. *A synoptical catalogue of British birds: Intended to identify the species mentioned by different names in several catalogues already extant. Forming a book of reference to observations on British ornithology*. Nichols, Son and Bentley, London. <https://www.biodiversitylibrary.org/item/47775>
- Fuller, E. 1987. *Extinct Birds*. Viking/Rainbird, London.
- Fürbringer, M. 1888. *Untersuchungen zur Morphologie und systematik der Vögel. Zugleich ein Beitrag zur Anatomie de Stütz- und Bewegungsorgane*. 2 vol., 1751 pp., 30 pl. T. J. Van Holkema, Amsterdam. <https://www.biodiversitylibrary.org/item/111287>
- Gangloff, B., Shirihai, H., Watling, D., Cruaud, C., Couloux, A., Tillier, A., Pasquet, E., and Bretagnolle, V. 2012. The complete phylogeny of *Pseudobulweria*, the most endangered seabird genus: systematics, species status and conservation implications. *Conservation Genetics*, 13:39-52. <https://doi.org/10.1007/s10592-011-0261-6>
- Gmelin, J.F. 1789. *Systema naturae per regna tria naturae, secundum classes, ordines, genera, species, cum characteribus, differentiis, synonymis, locis. Regnum Animalium*. 13<sup>th</sup> edition. 1(2): 501-1032. G.E. Beer, Lipsiae (Leipzig). <https://www.biodiversitylibrary.org/item/219009>
- Gould, J. 1844. On the Family Procellariidae [sic], with descriptions of ten new species. *Annals and Magazine of Natural History*, 13(82):360-368. <https://doi.org/10.1080/03745484409442618>
- Gray, G.R. 1845. Order VIII Anseres, Family II. Pelecanidae, pp 666-669, In *The genera of birds: comprising their generic characters, a notice of the habits of each genus, and an extensive*

- list of species referred to their several genera*. Vol. 3, Longman, Brown, Green, and Longmans, London. <https://www.biodiversitylibrary.org/item/219683>
- Green, R.C. and Weisler, M.I. 2000. *Mangarevan Archaeology: Interpretations using new data and 40 year old excavations to establish a sequence from 1200 to 1900 AD*. Department of Anthropology & Archaeology, University of Otago. <http://hdl.handle.net/10523/5946>
- Green, R.C. and Weisler, M.I. 2002. The Mangarevan sequence and dating of the geographic expansion into Southeast Polynesia. *Asian Perspectives*, 41:213-241. <https://doi.org/10.1353/asi.2003.0006>
- Green, R.C. and Weisler, M.I. 2004. Prehistoric introduction and extinction of animals in Mangareva, Southeast Polynesia. *Archaeology in Oceania*, 39:34-41. <https://doi.org/10.1002/j.1834-4453.2004.tb00555.x>
- Greenway, J.C., 1958. *Extinct and vanishing birds of the World*. American Committee for International Wild Life Protection, New York.
- Hekinian, R., Cheminee, J.L., Dubois, J., Stoffers, P., Scott, S., Guivel, C., Garbe-Schönberg, D., Devey, C., Bourdon, B., Lackschewtig, K., McMurtry, G., and Le Drezen, E. 2003. The Pitcairn hotspot in the South Pacific: distribution and composition of submarine volcanic sequences. *Journal of volcanology and geothermal research*, 121(3):219-245. [https://doi.org/10.1016/s0377-0273\(02\)00427-4](https://doi.org/10.1016/s0377-0273(02)00427-4)
- Hodgson, B.H. 1836. Notices of the ornithology of Nepal. III. New genera of the Columbidae. *Asiatic Researches*, 19:159-164. <https://www.biodiversitylibrary.org/item/137987>
- Horsfield, T. 1821. Systematic arrangement and description of birds from the Island of Java. *Transactions of the Linnean Society of London*, 13:133-200. <https://doi.org/10.1111/j.1095-8339.1821.tb00061.x>
- Hume, J.P. and Walters, M. 2012. *Extinct Birds*. T. & A.D. Poyser, London.
- Huxley, T.H. 1867. On the classification of birds: and on the taxonomic value of the modifications of certain of the cranial bones observable in that class. *Proceedings of the Zoological Society of London 1867*, 415-471. <https://www.biodiversitylibrary.org/item/93424>
- Illiger, J.K.W. 1811. *Prodromus systematis Mammalium et Avium additis terminis zoographicis utriusque classis, eorumque versone germanica*. C. Salfeld, Berlin, xviii + 301 pp. <https://www.biodiversitylibrary.org/item/92917>
- Imber, M.J., Merton, D.V., West, J.A., and Tennyson, A.J.D. 1991. Juan Fernandez Petrels prospecting at the Chatham Islands. *Notornis*, 38:60-62. <https://www.notornis.osnz.org.nz/juan-fernandez-petrels-prospecting-chatham-islands>
- Kirch, P.V. 2007. Three islands and an archipelago: Reciprocal interactions between humans and island ecosystems in Polynesia. *Earth and Environmental Science Transactions of the Royal Society of Edinburgh*, 98:1-15. <https://doi.org/10.1017/s1755691007000011>
- Kirch, P.V. 2017. *On the Road of the Winds: An Archaeological History of the Pacific Islands Before European Contact*. Revised and enlarged edition. University of California Press, Berkeley.
- Kirch, P.V. and Conte, E. 2009. Comblir une lacune dans la préhistoire de la Polynésie orientale : nouvelles données sur l'archipel des Gambier (Mangareva). *Le Journal de la Société des Océanistes*, 128:91-116. <https://doi.org/10.4000/jso.5873>
- Kirch, P.V., Conte, E., Sharp, W., and Nickelsen, C. 2010. The Onemea Site (Taravai Island, Mangareva) and the human colonization of Southeastern Polynesia. *Archaeology in Oceania*, 45:66-79. <https://doi.org/10.1002/j.1834-4453.2010.tb00081.x>
- Kirch, P.V., Molle, G., Nickelsen, C., Mills, P., Dotte-Sarout, E., Swift, J., Wolfe, A., and Horrocks, M. 2015. Human ecodynamics in the Mangareva Islands: a stratified sequence from Nenega-Iti Rock Shelter (site AGA-3, Agakauitai Island). *Archaeology in Oceania*, 50:23-42. <https://doi.org/10.1002/arco.5050>
- Lacépède, B.G.E. 1799. Tableau des sous-classes, divisions, sous-divisions, ordres et genres des oiseaux. In: *Discours d'ouverture et de clôture du cours d'histoire naturelle : donné dans le Muséum National d'Histoire naturelle, l'an VII de la République : et Tableaux méthodiques des Mammifères et des Oiseaux*. Plassan, Paris.
- Latham, J. 1790. *Index Ornithologicus, sive systema ornithologiæ: complectens Avium divisionem in classes, ordines, genera, species, ipsarumque varietates*. Vol. 1. Leigh & Sotherby, London, xviii + 920 pp. <https://www.biodiversitylibrary.org/item/226470>
- Leach, W.E. 1820. Eleventh room, upper floor. pp. 65-70. In Anonymous (ed.). *Synopsis of the contents of the British Museum*. [With an introductory statement of the rise and progress of



- the museum, and of its existing constitution, and an analytical syllabus of the library, etc.] 17<sup>th</sup> edition. London: British Museum. 166 pp.
- Lesson, P.-A. 1844. *Voyage aux îles Mangareva (Oceanic)*. Mercier et Devois, Rochefort.
- Linnaeus, C. 1758. *Systema Naturae per Regna Tria Naturae, secundum Classes, Ordines, Genera, Species, cum characteribus, differentiis, synonymis, locis*. 10th Edition, revised, Vol 1: Regnum Animale. Salvii, L. Holmiae, Stockholm, Sweden, iv + 824 pp. <https://www.biodiversitylibrary.org/item/10277>
- Marchant, S. and Higgins, P.J. (co-ordinators) 1990. *Handbook of Australian, New Zealand & Antarctic Birds. Vol. 1 - Ratites to Ducks*. Oxford University Press, Melbourne, Australia, 1400 pp.
- Marchant, S. and Higgins, P.J. (eds.) 1993. *Handbook of Australian, New Zealand & Antarctic Birds. Vol. 2*. Oxford University Press, Melbourne, Australia, 984 pp.
- Mathews, G.M. 1912. *The Birds of Australia. Vol. 2*. Witherby, London. <https://www.biodiversitylibrary.org/item/223654>
- Mathews, G.M. 1936. A note on the Black Fiji Petrel. *Ibis*, Ser. 13, 6(2):309. <https://doi.org/10.1111/j.1474-919x.1936.tb03375.x>
- Mayr, G. 2016. Variations in the hypotarsus morphology of birds and their evolutionary significance. *Acta Zoologica*, 97:196-210. <https://doi.org/10.1111/azo.12117>
- Meehan, H.J., McConkey, K.R., and Drake, D.R. 2002. Potential disruptions to seed dispersal mutualisms in Tonga, Western Polynesia. *Journal of Biogeography*, 29:695-712. <https://doi.org/10.1046/j.1365-2699.2002.00718.x>
- Murphy, R.C. and Pennoyer, J.M. 1952. Larger petrels of the genus *Pterodroma*. *American Museum Novitates*, 1580, 43 pp. <http://hdl.handle.net/2246/4049>
- Olson, S.L. and Rasmussen, P.C. 2001. Miocene and Pliocene birds from the Lee Creek Mine, North Carolina. Pp. 233–365. Ray, C.E and Bohaska, D.J. (eds.), *Geology and paleontology of the Lee Creek Mine, North Carolina, III. Smithsonian Contributions to Paleontology* 90. <https://doi.org/10.5479/si.00810266.90.1>
- Pratt, H.D., Bruner, P.L., and Berrett, D.G. 1987. *A Field Guide the birds of Hawaii and the Tropical Pacific*. Princeton University Press, Princeton.
- Priddel, D., Carlile, N., Moce, K., and Watling, D. 2008. A review of records and recovery actions for the 'Critically Endangered' Fiji Petrel *Pseudobulweria macgillivrayi*. *Bird Conservation International*, 18:381-393. <https://doi.org/10.1017/s0959270908007648>
- Pyle, P., Welch, A.J., and Fleischer, R.C. 2011. A new species of shearwater (*Puffinus*) recorded from Midway Atoll, Northwestern Hawaiian Islands. *The Condor*, 113:518-527. <https://doi.org/10.1525/cond.2011.100117>
- Rafinesque, C.S. 1815. *Analyse de la nature, ou Tableau de l'univers et des corps organisés*. published by the author, Palermo, Italy. 224 pp. <https://www.biodiversitylibrary.org/item/188066>
- Rayner, M.J., Carlile, N., Priddel, D., Bretagnolle, V., Miller, M.G.R., Phillips, R.A., Ranjard, L.S., Bury, J., and Torres, L.G. 2016. Niche partitioning by three *Pterodroma* petrel species during non-breeding in the equatorial Pacific Ocean. *Marine Ecology Progress Series*, 549:217-229. <https://doi.org/10.3354/meps11707>
- Reichenbach, H.G.L. 1853. Pp iv, *Die Vogel. The Birds – Aves – Les Oiseaux*, In Reichenbach, H.G.L. 1849–53. *Avium systema naturale: das natürliche System der Vögel mit hundert Tafeln grosstentheils Original-Abbildungen der bis jetzt entdeckten fast zwölfhundert typischen Formen. Vorläufer einer Iconographie der Arten der Vögel aller Welttheile, welche, nachdem bereits fast dreitausend Abbildungen erscheinen sind, ununterbrochen fortgesetzt wird*. Expedition der vollständigsten Naturgeschichte 1850, Dresden & Leipzig. 100 pp., 100 pls. <https://www.biodiversitylibrary.org/item/103886> [in part; publication date incorrect].
- Salvin, O. 1888. Critical notes on the Procellariidae. *Ibis*, 6(Ser. 5):351-360. <https://doi.org/10.1111/j.1474-919x.1888.tb08491.x>
- Salvin, O. 1896. Catalogue of the Gaviae and Tubinares in the collection of the British Museum. *Catalogue of the birds in the British Museum*, vol. 25, 475 pp. Taylor and Francis, London. <https://www.biodiversitylibrary.org/item/34471>
- Sharpe, R.B. 1891. *A Review of Recent Attempts to Classify Birds; an address delivered before the Second International Ornithological Congress*. Hungarian Committee of Second International Ornithological Congress, Budapest, 90 pp. <https://www.biodiversitylibrary.org/item/47733>

- Shirihai, H., Pym, T., Kretzschmar, J., Moce, K., Taukei, A., and Watling, D. 2009. First observations of Fiji Petrel *Pseudobulweria macgillivrayi* at sea off Gau Island, Fiji, in May 2009. *Bulletin of the British Ornithological Club*, 129(3):129-148. <http://boc-online.org/bulletins/downloads/Pseudobulweria%20macgillivrayi%20Shirihai%20et%20al.pdf>
- Sparrman, A. 1786. Museum Carlsonianum, in quo novae et selectae aves, coloribus ad vivum brevique descriptione illustratas, suavis et sumtibus generosissimi possessoris. Fasc. 1: no XI, pl. 11, *Ex Typographia Regia*, Holmiae. <https://doi.org/10.5962/bhl.title.62901>
- Steadman, D.W. 1989a. Extinction of birds in eastern Polynesia: A review of the record, and comparisons with other Pacific Island groups. *Journal of Archaeological Science*, 16:177-205. [https://doi.org/10.1016/0305-4403\(89\)90065-4](https://doi.org/10.1016/0305-4403(89)90065-4)
- Steadman, D.W. 1989b. New species and records of birds (Aves: Megapodiidae, Columbidae) from an archaeological site on Lifuka, Tonga. *Proceedings of the Biological Society of Washington*, 102:537-552. <https://www.biodiversitylibrary.org/item/107493>
- Steadman, D.W. 1992. New species of *Gallicolumba* and *Macropygia* (Aves: Columbidae). *Los Angeles County Museum of Natural History, Science Series*, 36:329-348.
- Steadman, D.W. 1993. Biogeography of Tongan birds before and after human impact. *Proceedings of the National Academy of Science U.S.A.*, 90:818-822. <https://doi.org/10.1073/pnas.90.3.818>
- Steadman, D.W. 1995. Prehistoric extinctions of Pacific island birds: Biodiversity meets zooarchaeology. *Science*, 267:1123-1131. <https://doi.org/10.1126/science.267.5201.1123>
- Steadman, D.W. 1997. The historic biogeography and community ecology of Polynesian pigeons and doves. *Journal of Biogeography*, 24:737-753. <https://doi.org/10.1046/j.1365-2699.1997.00157.x>
- Steadman, D.W. 2006. *Extinction and Biogeography of Tropical Pacific Birds*. The University of Chicago Press, Chicago & London.
- Steadman, D.W. and Justice, L. 1998. Prehistoric Exploitation of Birds on Mangareva, Gambier Islands, French Polynesia. *Man and culture in Oceania*, 14:81-98.
- Streets, T.H. 1877. Contributions to the Natural History of the Hawaiian and Fanning Islands and Lower California made in connection with the United States North Pacific Surveying Expedition, 1873-75. *Bulletin of the United States National Museum*, 1(7):1-172. <https://www.biodiversitylibrary.org/item/100798>
- Swainson, W. 1825. On the characters and natural affinities of several new birds from Australasia; including some observations on the Columbidae. *Zoological Journal London*, 1:463-484. <https://www.biodiversitylibrary.org/item/48988>
- Swift, J., Miller, M.J., and Kirch, P.V. 2016. Stable isotope analysis of Pacific rat (*Rattus exulans*) from archaeological sites in Mangareva (French Polynesia): Implications for nutrient flows in island socio-ecosystems. *Environmental Archaeology*, 22:283-297. <https://doi.org/10.1080/14614103.2016.1216933>
- Temminck, C.J. 1820. *Manuel d'ornithologie, ou, Tableau systématique des oiseaux qui se trouvent en Europe; précédé d'une analyse du système général d'ornithologie, et suivi d'une table alphabétique des espèces*, 2nd edn. Gabriel Dutour, Paris, France. <https://www.biodiversitylibrary.org/item/127471>
- Tennyson, A.J.D. and Anderson, A. 2012. Bird, reptile and mammal remains from archaeological sites on Rapa Island. pp. 105-114. In Anderson, A. and Kennett, D.J. (eds.), *Taking the High Ground. The archaeology of Rapa, a fortified island in remote east Polynesia*. *Terra Australis* 37. Australian National University Press, Canberra, Australia. <https://doi.org/10.22459/ta37.11.2012.06>
- Tennyson, A.J.D., Cooper, J., and Shepherd, L. 2015. A new species of extinct *Pterodroma* petrel (Procellariiformes: Procellariidae) from the Chatham Islands, New Zealand. *Bulletin of the British Ornithologists' Club*, 135(3):267-277.
- Thibault, J.-C. and Cibois, A. 2012. From early Polynesian settlements to the present: bird extinctions in the Gambier Islands. *Pacific Science*, 66(3):271-281. <https://doi.org/10.2984/66.3.2>
- Thibault, J.-C. and Cibois, A. 2017. *Birds of Eastern Polynesia. A biogeographic atlas*. Lynx Edicions, Barcelona.
- Thibault, J.-C. and Bretagnolle, V. 1999. Breeding seabirds of Gambier Islands, Eastern Polynesia: Numbers and changes during the 20th Century. *Emu*, 99:100-107. <https://doi.org/10.1071/mu99013>

- Villard, P., Dano, S., and Bretagnolle, V. 2006. Morphometrics and the breeding biology of the Tahiti Petrel *Pseudobulweria rostrata*. *Ibis*, 148:285-291. <https://doi.org/10.1111/j.1474-919X.2006.00528.x>
- Wagler, J.G. 1832. *Isis von Oken*, Heft 11: col. 1223. <https://www.biodiversitylibrary.org/item/85170>
- Walker, C.A., Wragg, G.M., and Harrison, C.J.O. 1990. A new shearwater from the Pleistocene of the Canary Islands and its bearing on the evolution of certain *Puffinus* shearwaters. *Historical Biology*, 3:203-224. <https://doi.org/10.1080/08912969009386522>
- Walther, M. and Hume, J.P. 2016. *Extinct birds of Hawai'i*. Mutual Publishing, Hawai'i.
- Warham, J. 1990. *The petrels: their ecology and breeding systems*. i-viii, 440 pp; Academic Press, London.
- Watling, D. and Lewanavanua, R.F. 1985. A note to record the continuing survival of the Fiji (MacGillivray's) Petrel *Pseudobulweria macgillivrayi*. *Ibis*, 127:230-233. <https://doi.org/10.1111/j.1474-919x.1985.tb05056.x>
- Waugh, S., Champeau, J., Cranwell, S., and Faulquier, L. 2013. Seabirds of the Gambier Archipelago, French Polynesia, in 2010. *Marine Ornithology*, 41:7-12. <http://www.marineornithology.org/content/get.cgi?m=1001>
- Weisler, M.I. 1996. An archaeological survey of Mangareva: Implications for regional settlement models and interaction studies. *Man and Culture in Oceania*, 12:61-85.
- Wilmshurst, J.M., Anderson, A.J., Higham, T.F.G., and Worthy, T.H. 2008. Dating the late prehistoric dispersal of Polynesians to New Zealand using the commensal Pacific rat. *Proceedings of the National Academy of Sciences, U. S. A.*, 105:7676-7680. <https://doi.org/10.1073/pnas.0801507105>
- Worthy, T.H. 2001. A giant flightless pigeon gen. et sp. nov. and a new species of *Ducula* (Aves: Columbidae), from Quaternary deposits in Fiji. *Journal of the Royal Society of New Zealand*, 31:763-794. <https://doi.org/10.1080/03014223.2001.9517673>
- Worthy, T.H., Hawkins, S., Bedford, S. and Spriggs, M. 2015. Avifauna from the Teouma Lapita Site, Efate Island, Vanuatu, including a new genus and species of megapode. *Pacific Science*, 69(2):205-254. <https://doi.org/10.2984/69.2.6>
- Worthy, T.H. and Tennyson, A.J.D. 2004. Avifaunal assemblages from the Nenega-Iti and Onemea sites. pp. 122-127. Chapter 6. In Conte, E. and Kirch, P.V. (eds.) *Archaeological investigations in the Mangareva Islands (Gambier Archipelago), French Polynesia*. Archaeological Research Facility, University of California, Berkeley, California. <https://escholarship.org/uc/item/8n28k36r>
- Worthy, T.H. and Wragg, G.M. 2003. A new species of *Gallicolumba*: Columbidae from Henderson Island, Pitcairn Group. *Journal of the Royal Society of New Zealand*, 33:769-793. <https://doi.org/10.1080/03014223.2003.9517758>
- Worthy, T.H. and Wragg, G.M. 2008. A new genus and species of pigeon (Aves: Columbidae) from Henderson Island, Pitcairn Group, pp. 499-510. In Clark, G., Leach, F., and O'Connor, S. (eds.), *Terra Australis 29. Islands of Inquiry: Colonisation, seafaring and the archaeology of maritime landscapes*. ANU E Press, The Australian National University, Canberra. 510 pp. <http://press.anu.edu.au?p=26551>
- Wragg, G.M. and Worthy, T.H. 2006. A new species of extinct imperial pigeon (*Ducula*: Columbidae) from Henderson Island, Pitcairn Group. *Historical Biology*, 18:127-140. <https://doi.org/10.1080/08912960600640853>
- Wragg, G.M. 1995. The fossil birds of Henderson Island, Pitcairn Group: natural turnover and human impact, a synopsis. *Biological Journal of the Linnean Society*, 56:405-414. <https://doi.org/10.1111/j.1095-8312.1995.tb01100.x>

