



HAL
open science

Breakdown of coevolution between symbiotic bacteria Wolbachia and their filarial hosts

Emilie Lefoulon, Odile Bain, Benjamin Makepeace, Cyrille d'Haese, Shigehiko
Uni, Coralie Martin, Laurent Gavotte

► **To cite this version:**

Emilie Lefoulon, Odile Bain, Benjamin Makepeace, Cyrille d'Haese, Shigehiko Uni, et al.. Breakdown of coevolution between symbiotic bacteria Wolbachia and their filarial hosts. PeerJ, 2016, 4, pp.e1840. 10.7717/peerj.1840 . hal-03054384

HAL Id: hal-03054384

<https://hal.umontpellier.fr/hal-03054384v1>

Submitted on 8 Jun 2021

HAL is a multi-disciplinary open access archive for the deposit and dissemination of scientific research documents, whether they are published or not. The documents may come from teaching and research institutions in France or abroad, or from public or private research centers.

L'archive ouverte pluridisciplinaire **HAL**, est destinée au dépôt et à la diffusion de documents scientifiques de niveau recherche, publiés ou non, émanant des établissements d'enseignement et de recherche français ou étrangers, des laboratoires publics ou privés.



Distributed under a Creative Commons Attribution 4.0 International License

Breakdown of coevolution between symbiotic bacteria *Wolbachia* and their filarial hosts

Emilie Lefoulon¹, Odile Bain^{1,†}, Benjamin L. Makepeace², Cyrille d'Haese³, Shigehiko Uni⁴, Coralie Martin¹ and Laurent Gavotte⁵

¹UMR7245, MCAM, Museum national d'Histoire naturelle, Paris, France

²Institute of Infection and Global Health, University of Liverpool, Liverpool, United Kingdom

³UMR7179 MECADEV, Museum national d'Histoire naturelle, Paris, France

⁴Institute of Biological Sciences, University of Malaya, Kuala Lumpur, Malaysia

⁵UMR5554 ISEM, Université de Montpellier II, Montpellier, France

† Deceased.

ABSTRACT

Wolbachia is an alpha-proteobacterial symbiont widely distributed in arthropods. Since the identification of *Wolbachia* in certain animal-parasitic nematodes (the Onchocercidae or filariae), the relationship between arthropod and nematode *Wolbachia* has attracted great interest. The obligate symbiosis in filariae, which renders infected species susceptible to antibiotic chemotherapy, was held to be distinct from the *Wolbachia*-arthropod relationship, typified by reproductive parasitism. While co-evolutionary signatures in *Wolbachia*-arthropod symbioses are generally weak, reflecting horizontal transmission events, strict co-evolution between filariae and *Wolbachia* has been reported previously. However, the absence of close outgroups for phylogenetic studies prevented the determination of which host group originally acquired *Wolbachia*. Here, we present the largest co-phylogenetic analysis of *Wolbachia* in filariae performed to date including: (i) a screening and an updated phylogeny of *Wolbachia*; (ii) a co-phylogenetic analysis; and (iii) a hypothesis on the acquisition of *Wolbachia* infection. First, our results show a general overestimation of *Wolbachia* occurrence and support the hypothesis of an ancestral absence of infection in the nematode phylum. The accuracy of supergroup J is also underlined. Second, although a global pattern of coevolution remains, the signal is derived predominantly from filarial clades associated with *Wolbachia* in supergroups C and J. In other filarial clades, harbouring *Wolbachia* supergroups D and F, horizontal acquisitions and secondary losses are common. Finally, our results suggest that supergroup C is the basal *Wolbachia* clade within the Ecdysozoa. This hypothesis on the origin of *Wolbachia* would change drastically our understanding of *Wolbachia* evolution.

Subjects Evolutionary Studies, Parasitology

Keywords Symbiosis, Horizontal transmission, Cophylogenetic analysis, *Wolbachia*, Coevolution, Filarial nematodes

INTRODUCTION

Wolbachia (Rickettsiales, *Anaplasmataceae*) are α -proteobacteria closely related to *Ehrlichia* and *Anaplasma* species. They are widespread symbionts detected in all arthropod

Submitted 9 February 2016

Accepted 2 March 2016

Published 28 March 2016

Corresponding author
Coralie Martin, cmartin@mnhn.fr

Academic editor
Marta Sánchez

Additional Information and
Declarations can be found on
page 20

DOI 10.7717/peerj.1840

© Copyright
2016 Lefoulon et al.

Distributed under
Creative Commons CC-BY 4.0

OPEN ACCESS

classes (infecting between 20 and 70% of insect species) (Bourtzis & Miller, 2003; Zug & Hammerstein, 2012) as well as in a nematode family, the Onchocercidae, commonly known as filariae (Bandi et al., 1998; Sironi et al., 1995). Thus, *Wolbachia* are present in millions of species. They are vertically transmitted from females to offspring. In addition, this bacterium induces a large range of phenotypes in its hosts, varying from mutualism, including obligate dependencies for reproduction and long-term survival (mostly described in filariae and some arthropods) (Hosokawa et al., 2010; Zug & Hammerstein, 2015; Hoerauf et al., 2003); to parasitism by interfering with host reproduction (in arthropods only) (Werren, Baldo & Clark, 2008). The spread of *Wolbachia* via cytoplasmic incompatibility, male killing, feminization and induction of parthenogenesis can have a major impact on the evolution of arthropod host populations, and in some cases, may drive speciation (Rokas, 2000; Telschow et al., 2007).

Studies on *Wolbachia* are more largely focused on arthropods mainly due to: the higher incidence of *Wolbachia* in arthropods (e.g., a greater number of infected species), differences of accessibility (rearing and collecting are easier for arthropods) and also the relatively late identification of *Wolbachia* in filariae. Indeed, although intracellular bacterial organisms had been observed in filariae tissues decades ago (Kozek, 1971; Kozek, 1977; McLaren et al., 1975), they were only molecularly identified as closely related to *Wolbachia pipientis* in the mid-1990s (Sironi et al., 1995). The obligate nature of the relationship between *Wolbachia* and filariae has led to clinical trials of antibiotics for the treatment of filarial diseases of humans, including lymphatic filariasis and onchocerciasis (Bandi et al., 1999; Taylor et al., 2000; Taylor et al., 2012).

The different *Wolbachia* strains have been classified in major phylogenetic lineages named supergroups. Initially, the phylogeny of *Wolbachia* described two clades (named supergroups A and B) infecting only arthropods. Two other clades were added after the investigation of bacteria in filariae (supergroups C and D) (Bandi et al., 1998). From 1999 to 2015, a multiplication of supergroup classifications occurred, with 10 clades identified that exclusively infect arthropods (supergroups E, G, H, I, K, M, N, O, P and Q) (Augustinos et al., 2011; Bing et al., 2014; Bordenstein & Rosengaus, 2005; Czarnetzki & Tebbe, 2004; Dittmar & Whiting, 2004; Glowska et al., 2015; Ros et al., 2009; Rowley, Raven & McGraw, 2004; Vandekerckhove et al., 1999; Wang et al., 2014); one infecting filariae (supergroup J) (Casiraghi et al., 2004); one identified in the plant parasite nematode *Radopholus similis* (Tylenchida) (supergroup L) (Haegeman et al., 2009); and finally supergroup F, which is apparently unique in infecting both arthropods and filariae (Casiraghi et al., 2001b; Lo et al., 2002).

These phylogenetic analyses led to *Wolbachia* classification gradually increasing in complexity from single gene analysis (Sironi et al., 1995; Werren, Zhang & Guo, 1995) to multi-locus methods (Baldo et al., 2006b; Bordenstein et al., 2009; Casiraghi et al., 2001a; Casiraghi et al., 2005; Lefoulon et al., 2012). More recently, the complete sequencing of various *Wolbachia* genomes has allowed the development of phylogenomic analyses (Comandatore et al., 2013; Fenn & Blaxter, 2006; Gerth et al., 2014; Nikoh et al., 2014; Ramirez-Puebla et al., 2015). The evolutionary history of *Wolbachia* has been investigated by using outgroups belonging to the *Anaplasma*, *Ehrlichia* or *Rickettsia* genera (O'Neill

et al., 1992; Ramirez-Puebla *et al.*, 2015) as an attempt to establish the origin of the bacteria. However, it has been suggested that these outgroups are too distant to the ingroups, and thus could introduce artefacts to the phylogenetic reconstruction (such as long-branch attraction, LBA), rendering it very challenging to determine the host group that initially acquired *Wolbachia* infection with confidence (Bordenstein *et al.*, 2009).

The co-evolutionary pattern observed for *Wolbachia* varies between hosts (Bandi *et al.*, 1998; Bourtzis & Miller, 2003). First, composite dynamics of acquisition and loss of bacteria strains in arthropods has made the picture very complex at a co-evolutionary scale (Baldo *et al.*, 2008; Gerth, Rothe & Bleidorn, 2013; O'Neill *et al.*, 1992; Vavre *et al.*, 1999). Second, co-speciation of filariae and *Wolbachia* has been hypothesized (Bandi *et al.*, 1998), even if several cases of secondary losses and two cases of horizontal transmission between species have been detected, suggesting this scenario is too simplistic (Ferri *et al.*, 2011; Lefoulon *et al.*, 2012; Martin & Gavotte, 2010). Moreover, to date, the notion of coevolution between *Wolbachia* and filariae was based on a poorly resolved evolutionary history of the Onchocercidae and limited sampling (just 10 examined species) (Bandi *et al.*, 1998).

We have recently revised the evolutionary history of the Onchocercidae by completing the most comprehensive analysis to date, using a multi-gene phylogeny on 45 different species representing seven of the eight subfamilies (Lefoulon *et al.*, 2015). Here, we propose a reappraisal of the coevolutionary pattern between *Wolbachia* and filariae using this significantly more intensive sampling. We identify new *Wolbachia* strains, critically examine the accuracy of the *Wolbachia* supergroups, reassess the prevalence of *Wolbachia* infection within the Onchocercidae and revisit the hypothesis of ancestral *Wolbachia* absence. Our co-phylogenetic analyses reveal multiple events of losses and acquisitions of the bacteria in the filariae, highlighting strong but localized patterns of co-evolution in some clades, in contrast with multiple horizontal transfers and a breakdown of co-evolution in others. Finally, we apply a new approach to the question of initial acquisition of *Wolbachia* within the Ecdysozoa.

MATERIALS AND METHODS

Specimens

DNA from 45 filariae, including 2 outgroup species that fall outside the Onchocercidae (obtained from Lefoulon *et al.* (2015)), as well as 5 specimens of arthropods (Tables 1 and 2), were used for molecular analyses. In addition, some filarial specimens were used for histological analyses (Table 1). All procedures were conducted in compliance with the rules and regulations of the respective competent national ethical bodies (Table S1) (Lefoulon *et al.*, 2015). Some non-human vertebrates were captured for experimental procedures, subject to the ethics approval of the relevant national bodies, while others were obtained at abattoirs or donated to the MNHN by hunters or veterinarians (Table S1). The MNHN does neither solicit nor compensate for these donations. Nematode accession numbers are reported in Table 1. For the author(s) and year of parasite and host species collection, the reader is referred to File S1. All the samples were fixed and kept in 70% ethanol. For nematodes, the median parts were used for molecular analyses; the anterior and posterior parts being retained for possible morphological analyses.

Table 1 Details on filariae and other nematodes for which new molecular and/or histological analyses were performed. The first two columns indicate the subfamilies and the names of the species. For the author(s) and year of collection of each parasite and host species, the reader is referred to [File S1](#). The last three columns indicate respectively: host species; Muséum National d'Histoire Naturelle Paris registration number; and country of specimen collection.

Subfamilies	Species	Host	No.	Collection place
Oswaldofilariinae	<i>Oswaldofilaria chabaudi</i>	<i>Tropidurus torquatus</i>	191YU	Brasil
	<i>Oswaldofilaria petersi</i>	<i>Crocodilurus amazonicus</i>	34PF	Peru
Waltonellinae	<i>Ochoterenella</i> sp.1	<i>Rhinella granulosa</i>	200YU	Venezuela
	<i>Ochoterenella</i> sp.2	<i>Rhinella marina</i>	47YT	Venezuela
	<i>Ochoterenella</i> sp.3	<i>Phyllomedusa bicolor</i>	194JW	French Guyana
Icosiellinae	<i>Icosiella neglecta</i>	<i>Rana ridibunda</i>	44YT	Ukraine
		<i>Rana esculeta</i>	45YT	France
Setariinae	<i>Setaria labiatopapillosa</i>	<i>Bos taurus</i>	413YU	Cameroon
	<i>Setaria tundra</i>	<i>Rangifer tarandus</i>	71YT	Finlande
Dirofilarinae	<i>Dirofilaria (Dirofilaria) immitis</i>	<i>Canis familiaris</i>	79YT	ES
	<i>Dirofilaria (Nochtiella) repens</i>	<i>Canis familiaris</i>	297YU	Italy
	<i>Foleyella candezei</i>	<i>Agama agama</i>	68CE	Togo
	<i>Loa loa</i>	<i>Homo sapiens</i>	80YT	France
	<i>Pelecitus fulicaeatrae</i>	<i>Podiceps nigricollis</i>	49YT	Spain
Splendidofilariinae	<i>Aproctella alessandroi</i>	<i>Saltator similis</i>	117YU	Brasil
	<i>Cardiofilaria pavlovskyi</i>	<i>Oriolus oriolus</i>	180YU	Bulgaria
	<i>Madathamugadia hiepei</i>	<i>Pachycactylus turneri</i>	81YU	South Africa
	<i>Rumenfilaria andersoni</i>	<i>Rangifer tarandus</i>	94YU	Finlande
Onchocercinae	<i>Acanthocheilonema odendhali</i>	<i>Callorhinus ursinus</i>	401YU	Alaska
	<i>Acanthocheilonema viteae</i>	<i>Meriones unguiculatus</i>	7YT	ES
	<i>Breinlia (Breinlia) jittapalapongi</i>	<i>Rattus tanezumi</i>	78YT	Laos
	<i>Brugia malayi</i>	<i>Meriones unguiculatus</i>	8YT	ES
	<i>Brugia pahangi</i>	<i>Meriones unguiculatus</i>	46YT	ES
	<i>Brugia timori</i>	<i>Homo sapiens</i>	6YT	Indonesia
	<i>Cercopithifilaria bainaie</i>	<i>Canis familiaris</i>	9YT	ES
	<i>Cercopithifilaria rugosicauda</i>	<i>Capreolus capreolus</i>	350YU	France
	<i>Cruorifilaria tubero cauda</i>	<i>Hydrochoerus hydrochaeris</i>	55YT	Venezuela
	<i>Dipetalonema caudispina</i>	<i>Ateles paniscus</i>	362YU	Guyana
		<i>Ateles</i> sp.	64YT	Guyana
	<i>Dipetalonema gracile</i>	<i>Cebus olivaceus</i>	124CV	Venezuela
		<i>Cebus apella</i>	215YU	Peru
		<i>Ateles</i> sp.	63YT	Guyana
	<i>Dipetalonema graciliformis</i>	<i>Saimiri sciureus</i>	220YU	Peru
	<i>Dipetalonema robini</i>	<i>Lagothrix poeppigii</i>	216YU	Peru
	<i>Litomosoides brasiliensis</i>	<i>Carollia perspicillata</i>	35/37PF	Peru
	<i>Litomosoides hamletti</i>	<i>glossophaga soricina</i>	36PF1	Peru
	<i>Litomosoides sigmodontis</i>	<i>Meriones unguiculatus</i>	186MS	ES
	<i>Litomosoides solarii</i>	<i>Trachops cirrhosus</i>	213YU	Venezuela

(continued on next page)

Table 1 (continued)

Subfamilies	Species	Host	No.	Collection place
	<i>Loxodontofilaria caprini</i>	<i>Capricornis crispus</i>	YG2-58	Japan
	<i>Mansonella (Cutifilaria) perforata</i>	<i>Cervus nippon</i>	216JW	Japan
	<i>Mansonella (Mansonella) ozzardi</i>	<i>Homo sapiens</i>	77YT	Haiti
	<i>Monanema martini</i>	<i>Arvicanthis niloticus</i>	31NC	Senegal
	<i>Onchocerca armillata</i>	<i>Bos taurus</i>	54FK	Cameroon
	<i>Onchocerca dewittei japonica</i>	<i>S. scrofa leucomystax</i>	OB9	Japan
	<i>Onchocerca eberhardi</i>	<i>Cervus nippon</i>	S63-5	Japan
	<i>Onchocerca gutturosa</i>	<i>Bos taurus</i>	54FK	Cameroon
	<i>Onchocerca ochengi</i>	<i>Bos taurus</i>	54FK	Cameroon
	<i>Onchocerca skrjabini</i>	<i>Cervus nippon</i>	S63-6	Japan
	<i>Yatesia hydrochoerus</i>	<i>Hydrochoerus hydrochaeris</i>	52YT	Venezuela
Outgroups	<i>Filaria latala</i>	<i>Panthera leo</i>	62YT	South Africa
	<i>Protospirura muricola</i>	<i>Gorilla sp.</i>	97YU	Central African Republic

Notes.

Abbreviation: ES, Experimental strains.

Table 2 Details of arthropods specimens for which new molecular analyses were performed. The first columns indicate the families and the name of the species. For the author(s) and collection year of specimens, the reader is referred to [File S1](#). The two last columns indicate Muséum National d'Histoire Naturelle Paris registration number and country of specimen collection, respectively.

Families	Species	No. MNHN	Collection place
Cimicidae	<i>Cimex lectularius</i>	11YT	France
Drosophilidae	<i>Drosophila simulans</i>	394YU	France (experimental)
Encyrtidae	<i>Ixodiphagus hookeri</i>	383YU	France
Isotomidae	<i>Folsomia candida</i>	EA010816	France (experimental)
Termitidae	<i>Nasutitermes sp.</i>	86YT	Venezuela

Molecular screening

DNA was extracted from nematodes or arthropods using the QIAamp kit following the recommended procedures of the manufacturer (Qiagen, France), with a preliminary step of disruption for 2 cycles of 30 s at 30 Hz using a TissueLyser II (Qiagen, Germany) and incubation at 56 °C with proteinase K overnight. The presence of *Wolbachia* was determined by nested PCR screening of the seven genes (16S rDNA gene, *dnaA*, *coxA*, *fbpA*, *gatB*, *ftsZ* and *groEL*) as described in [Table S2](#). PCR products were purified using the SV Wizard PCR Purification Kit (Promega, USA) and directly sequenced. A total of 198 sequences were deposited in the GenBank Data Library: [KU255197](#) to [KU255395](#) ([Table S3](#)).

Immunohistochemical staining of nematode sections

The presence or absence of *Wolbachia* was determined by immunohistochemical staining according to [Kramer et al. \(2003\)](#). A rabbit polyclonal antiserum raised against the *Wolbachia* surface protein (WSP) of *Wolbachia* from *Brugia pahangi* (Wol-Bp-WSP,

dilution 1:2000 (designed by [Bazzocchi et al. \(2000\)](#) and provided by Dr. Maurizio Casiraghi) was used to stain 5 µm paraffin sections of filarial species placed on Superfrost Plus slides (Thermo Scientific) as described by [Ferri et al. \(2011\)](#). Sections of the laboratory strain *Litomosoides sigmodontis* were used as a positive control. Negative controls were carried out by omitting the primary antibody. In addition, transverse sections were stained with haematoxylin and eosin for the identification of anatomical structures.

Phylogenetic reconstruction

The *Wolbachia* 16S rDNA, *dnaA*, *groEL*, *ftsZ*, *coxA*, *fbpA* and *gatB* sequences were aligned with sequences available in Genbank ([Table S3](#)) using Muscle ([Edgar, 2004](#)). To check for the absence of stop codons, the alignment of coding genes was translated using EMBOSS Transeq ([Li et al., 2015](#)), and a comparison with available transcript sequences was performed. 12 complete genomes or draft genomes of *Wolbachia* from arthropods and 5 complete or draft genomes of *Wolbachia* from filariae were used in the analyses ([Table S3](#)). *Wolbachia* from arthropods included in the analyses were selected based on the availability of the 7 genetic markers we used (with exception of *Wolbachia* from *O. horni*, *T. deion*, *Z. angusticollis* and *Z. nevadensis*). Presence of recombination events were evaluated by RDP ([Martin & Rybicki, 2000](#)), GENECONV ([Padidam, Sawyer & Fauquet, 1999](#)), BootScan ([Salminen et al., 1995](#)), MAXCHI ([Smith, 1992](#)), Chimaera ([Posada & Crandall, 2001](#)), SISCAN ([Gibbs, Armstrong & Gibbs, 2000](#)) and 3Sequ ([Boni, Posada & Feldman, 2007](#)) methods using RDP v4.38 ([Martin et al., 2015](#)). Tests of nucleotide substitution saturation were performed on alignments with and without outgroups by Xia's method ([Xia et al., 2003](#)) using DAMBE version 5 ([Xia & Xie, 2001](#)). A supermatrix of these seven alignments was generated using Seaview ([Gouy, Guindon & Gascuel, 2010](#)). Two different nucleotide datasets were analysed for different purposes: one alignment of 64 *Wolbachia* without outgroups for the phylogenetic analysis, and one alignment including only *Wolbachia* from filarial nematodes was studied for the cophylogenetic analysis. In addition, both a nucleotide and an amino-acid dataset of 54 *Wolbachia* strains, including five outgroups (*Anaplasma marginale* Theiler, 1910, *Anaplasma phagocytophilum* ([Dumler et al., 2001](#)), *Ehrlichia chaffeensis* Anderson et al., 1992, *Ehrlichia muris* Wen et al., 1995, *Ehrlichia ruminantium* ([Dumler et al., 2001](#)), were generated. Best-fitting evolutionary models according to a supermatrix were determined by JModelTest 2.1 ([Darriba et al., 2012](#)) or by ProtTest 2.4 ([Abascal, Zardoya & Posada, 2005](#)) using the corrected version of the Akaike Information Criterion (AICc). For the nucleotide supermatrix, the phylogenies of filariae and *Wolbachia* were performed by Maximum Likelihood (ML) inference using the model GTR+ I+Γ with RAxML version 8 ([Stamatakis, 2014](#)). For each gene, a partitioned model was implemented to estimate evolution parameters. The robustness of nodes was assessed with 1,000 bootstrap replicates. ML analysis of the amino acid supermatrix was performed using the model HIVb+ I+Γ+ F with PhyML ([Ronquist & Huelsenbeck, 2003](#)). The robustness of nodes was assessed with 500 bootstrap replicates.

Cophylogenetic analysis

Two methods were performed to study cophylogenetic patterns between filariae and their *Wolbachia* symbionts: a global-fit method and an event-based method.

The global-fit method estimates the congruence between two phylogenetic trees. The global fit of filarial phylogeny with their bacterial phylogeny was estimated using the PACo application ([Balbuena, Miguez-Lozano & Blasco-Costa, 2013](#)) in the R environment ([R Core Team, 2013](#)). This method is a distance-based test: briefly, the ML phylogenetic trees were transformed into matrices of pairwise patristic distance, then into matrices of principal coordinates (PCo). The PCo of *Wolbachia* were transformed by Procrustes analysis using least-squares superimposition to minimize the differences with filarial PCo. An ordination plot was produced, representing the Procrustean global fit. The global fit was evaluated by the residual sum of squares value (m_{XY}^2) of the Procrustean fit calculation, which is inversely proportional to the topological congruence, and its significance was tested by random permutations (100,000,000 permutations). Each host-symbiont association was evaluated by a jackknife procedure ([Sokal & Rohlf, 1981](#)) to estimate the square residual of each single association and its 95% confidence interval. A bar chart plot of these jackknifed squared residual was produced. Low residuals are interpreted as a low contribution of m_{XY}^2 and thus as a strong congruence between the filariae and the bacteria.

The event-based method explores co-evolutionary scenarios in order to find the best reconstructions by minimizing the overall cost, given a cost regime for evolutionary events ([Charleston, 1998](#)). Jane 4.0 ([Conow et al., 2010](#)) was used to associate overall costs of co-evolutionary scenarios between *Wolbachia* and their hosts. The default settings for cost regimes are: a “co-speciation” event (two partners speciate simultaneously) is associated with null cost; a “duplication” event (the symbionts speciate in the same host) and “loss” event (the symbiont does not speciate while the host does) are associated with a cost equal to one; and a “duplication then host switching” event (the symbiont speciates and one switches to another host) is associated with a cost equal to two ([Charleston, 1998](#)). All analyses were performed with a number of generation of 500 and a population of 30.

This method is only manageable on rooted phylogenies, yet rooting of *Wolbachia* phylogeny is contested due to the absence of appropriate outgroups ([Bordenstein et al., 2009](#)). In order to circumvent this problem, the estimation of the co-evolutionary scenario associated with the minimum overall cost was analysed using different rooting constraints on the *Wolbachia* phylogeny.

An initial analysis was performed including only filariae and their *Wolbachia* symbionts (62 hosts and 36 symbionts). This analysis was performed without constraint or with a time constraint. Although Jane’s program does not change topologies (i.e., the relationships between hosts) it can modify the distance branches (i.e., the nodes representing the events of speciation are not fixed by timescale) ([Conow et al., 2010](#)). Thus, without time constraint, “host switch” events are not limited by temporal scales and the algorithm can change branch length on the filarial tree to minimize scenario cost, at the risk that this is inconsistent with filarial evolution. Subsequently, two time zones were defined to provide constraints to indicate that the first speciation events leading to filariae belonging to ONC1, ONC2 and ONC3 (thus within time zone no. 1) occurred before the first speciation events leading to filariae belonging to ONC4 and ONC5 (thus within time zone no. 2) ([Lefoulon et al., 2015](#)). Thus, *Wolbachia* speciation events were constrained within the second time zone.

A second analysis was performed adding *Wolbachia* from arthropods (64 *Wolbachia* strains in total). This analysis was made possible because the Jane program manages topologies and not distance branches (Conow *et al.*, 2010). A hypothetical arthropod evolutionary history based on previous studies (Legendre *et al.*, 2015; Misof *et al.*, 2014; Tong *et al.*, 2015; Wiegmann *et al.*, 2011) was added to the nematode topology in order to perform these analyses. This second analysis was conducted without time constraint because the timescale of evolution for all the hosts (arthropods and filariae) is poorly known. If time zones were defined, events of *Wolbachia* speciation should be constrained into these zones. The definition of these temporal constraints appears arbitrary so far as timescales are not determined.

RESULTS/DISCUSSION

Absence of *Wolbachia* in filariae: ancestral absence and secondary losses

The detection of *Wolbachia* was performed on 16 new filarial species among a total of 45 examined species (Table 1). Nine of the 16 new species were *Wolbachia*-free (based on PCR screening and/or WSP antibody staining) (Fig. 1 and Table 3). The *Wolbachia* infection status (i.e., presence or absence) in the other species was in agreement with previous studies (Fig. 1). Absence of *Wolbachia* infection in filarial species could be explained by two hypotheses: either an ancestral absence or a secondary loss (Casiraghi *et al.*, 2004).

We have previously identified five strongly supported clades within the Onchocercidae that we have named ONC1 to ONC5 based on their monophyly (Fig. 1) (Lefoulon *et al.*, 2015). The ancestrally derived species belonging to the genera *Oswaldofilaria*, *Icosiella* and *Ochoterenella* (clade ONC1) are not infected by *Wolbachia* (Fig. 1). This result supports, as previously suggested, the absence of *Wolbachia* infection as an ancestral trait (Bain *et al.*, 2008; Ferri *et al.*, 2011; Lefoulon *et al.*, 2012). Absence of *Wolbachia* has also been noted in the other nematodes and nematomorph species examined so far (about 30 examined species) (Bordenstein, Fitch & Werren, 2003; Duron & Gavotte, 2007; Foster *et al.*, 2014), with the exception of the plant parasitic nematode *Radopholus similis* (Haegeman *et al.*, 2009), emphasizing the hypothesis of ancestral absence. Nevertheless, the hypothesis of secondary loss(es) cannot be ruled out, especially considering a recent discovery of *Wolbachia* genetic sequences within the host nuclear genome (“nuwts”, nuclear *Wolbachia* transfers) of the *Wolbachia*-free nematode *Dictyocaulus viviparus* (Rhabditina), which would imply secondary losses in at least some nematode clades outside the Onchocercidae (Koutsovoulos *et al.*, 2014).

In more recently derived groups (clades ONC3, ONC4 and ONC5), infection was detected in a majority of species (71%) (Fig. 1). The more parsimonious hypothesis to explain the lack of infection in species belonging to these groups is a series of secondary losses, instead of a more costly scenario with multiple independent acquisitions. Thus, absence of infection in *Pelecitus fulicaeatrae*, *Acanthocheilonema odendhali*, *Breinlia* (*Breinlia*) *jittapalapongi* (ONC5) and *Cercopithifilaria baina*e (ONC4) are likely due to such losses. This hypothesis is strengthened by the identification of nuwts in *Wolbachia*-free species, such as *Onchocerca flexuosa* (ONC 3) and *Acanthocheilonema viteae* (ONC

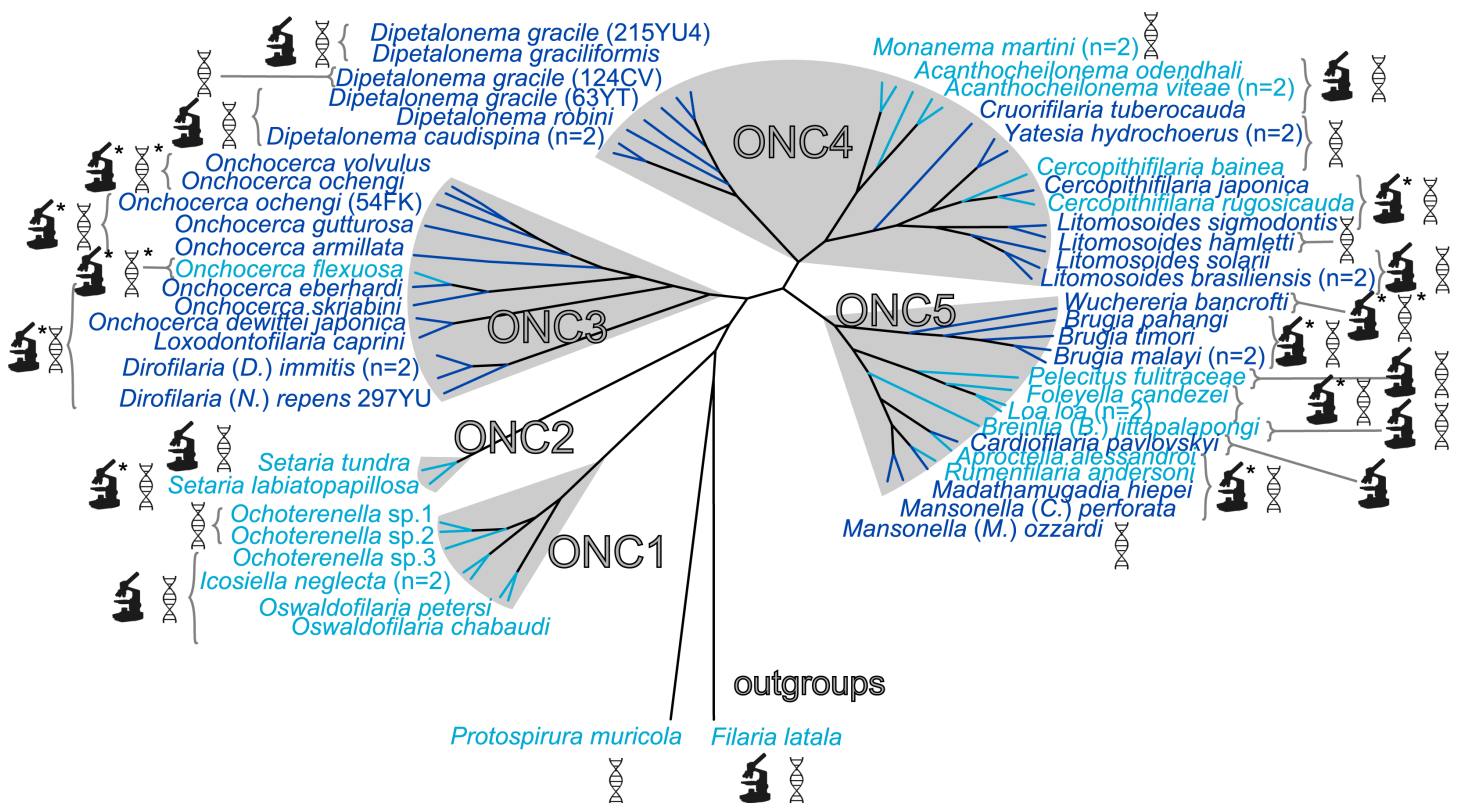


Figure 1 Presence/absence of *Wolbachia* in filariae (Onchocercidae). Sixty onchocercid specimens from 45 species were analysed. *Wolbachia* screening was performed by either PCR and/or immunohistostaining with a rabbit polyclonal antiserum against *Wolbachia* surface protein (WSP) of *Brugia pahangi* *Wolbachia* (Wol-Bp-WSP, dilution 1:2,000). Results of *Wolbachia* screening are indicated by colour: light blue for *Wolbachia*-free species and dark blue for *Wolbachia*-positive species. Detection methods for *Wolbachia* are illustrated next to the species name using specified symbols: DNA double helix symbol, DNA amplification by PCR; microscope symbol, immunohistostaining of WSP; *, determine by previous studies. The filarial clades (ONC1-ONC5) were defined according to Lefoulon *et al.* (2015). Phylogeny of Onchocercidae was based on partitioned concatenated datasets of 12S rDNA, *coxI*, *rbp1*, *hsp70*, *myoHC*, 18S rDNA, and 28S rDNA sequences using Maximum Likelihood Inference.

4) (McNulty *et al.*, 2010) and small *Wolbachia*-derived sequences (<500 bp) in *Loa loa* (ONC 5) (Desjardins *et al.*, 2013).

Occurrence of *Wolbachia* infection: where do we stand?

Among the 26 species harbouring a *Wolbachia* infection, seven new *Wolbachia* strains were identified (Fig. 1) in the following filarial species: *Cruorifilaria tubero cauda*, *Yatesia hydrochoerus*, *Dipetalonema caudispina*, *D. graciliformis*, *D. robini*, *Litomosoides solarii* (all in ONC4) and *Cardiofilaria pavlovskyi* (ONC5). Thus, *Wolbachia* infection occurs in 58% of our sample. Combining these data with those from former studies (Table S4), the occurrence of *Wolbachia* infection is 52.9% across 85 analysed filarial species. However, it is important to emphasise that most of the examined species belong to the more recently derived Onchocercinae subfamily, so the estimated occurrence of *Wolbachia* infection within the filariae still may be biased towards infected species (Fig. 1). For example, the filariae from birds, squamates and amphibians are largely understudied (Ferri *et al.*, 2011). *Wolbachia* were typically present in the hypodermis of filariae and in the female germline

Table 3 *Wolbachia* distribution in tissues of 20 filarial nematode specimens by immunostaining.

Species	MNHN no	Sex	LC	GL			Testes	SG	Intestine
				Oocyte	Egg	mf			
<i>Acanthocheilonema odendhali</i>	401YU	f	–	NA	NA	–	NA	–	–
<i>Breinlia (Breinlia) jittapalapongi</i>	78YT	m	–	NA	NA	NA	–	–	–
<i>Cardiofilaria pavlovskiyi</i>	180YU	f	+	NA	+	NA	NA	–	+
<i>Cruorifilaria tubero cauda</i>	57YT	f	+	NA	NA	+	NA	–	–
<i>Cruorifilaria tubero cauda</i>	60YT	f	+	NA	NA	+	NA	–	–
<i>Dipetalonema caudispina</i>	64YT	f	+	NA	–	NA	NA	–	–
<i>Dipetalonema gracile</i>	215YU	f	+	NA	+	NA	NA	–	–
<i>Dipetalonema graciliformis</i>	220YU	f	+	NA	+	NA	NA	–	–
<i>Dipetalonema robini</i>	216YU	f	+	NA	+	NA	NA	–	–
<i>Icosiella neglecta</i>	122YU	f	–	–	NA	NA	NA	–	NA
<i>Litomosoides brasiliensis</i>	35PF	f	+	+	+	NA	NA	–	–
<i>Litomosoides solarii</i>	213YU	f	+	NA	+	NA	NA	–	–
<i>Ochoterenella phyllomedusa</i>	194JW	f	–	NA	–	–	NA	–	–
<i>Oswaldofilaria chabaudi</i>	102YU	f	NS	NA	–	NA	NA	–	NS
<i>Oswaldofilaria petersi</i>	34PF	f	–	–	NA	NA	NA	–	NA
<i>Pelecitus fulicaeatrae</i>	150YU	f	–	NA	–	–	NA	–	–
<i>Setaria tundra</i>	71YT	f	–	NA	–	NA	NA	–	NS

Notes.

Abbreviation: LC, lateral chords (hypodermis); GL, germline; mf, microfilaria; SG, somatic germline; +, positive staining; –, no staining; ns, no specific staining; NA, not available due to position of the section.

(Table 3, Figs. S1 and S2), except for a specimen of *Cardiofilaria pavlovskiyi*, in which an additional localisation in the intestinal wall cells was observed. This tissue distribution has also been reported for *Madathamugadia hiepei* (Lefoulon et al., 2012) and *Mansonella (Cutifilaria) perforata* (Ferri et al., 2011).

Updated, unrooted *Wolbachia* phylogeny highlights accuracy of supergroup J

The present unrooted *Wolbachia* phylogeny includes 64 *Wolbachia* strains and is based on the concatenation of seven genes (16S rDNA, *groEL*, *ftsZ*, *dnaA*, *gatB*, *fbpA* and *coxA*) (Fig. 2). While no events of recombination were found within *coxA*, *gatB*, *ftsZ*, *dnaA* sequences, some were detected in 16S rDNA, *fbpA* and *groEL* sequences as presented in Table 4. These events occurred exclusively between supergroups A and B *Wolbachia*, as previously described (Baldo et al., 2006a). The resultant phylogeny reveals 7 strongly supported clades representing the seven previously defined supergroups A, B, C, D, F, H, and J (Bandi et al., 1998; Lo et al., 2002; Ros et al., 2009; Werren, Zhang & Guo, 1995).

Wolbachia from the *Dipetalonema* species (*D. gracile*, *D. caudispina*, *D. robini* and *D. graciliformis*) constitute a strongly supported group (Fig. 1). *Wolbachia* from *Yatesia hydrochoerus* and *Cruorifilaria tubero cauda* were closely related and are also linked to the *Wolbachia* from the *Dipetalonema* species. All together, they formed a strongly supported clade that confirm the validity of supergroup J (Ros et al., 2009), even if our results suggest

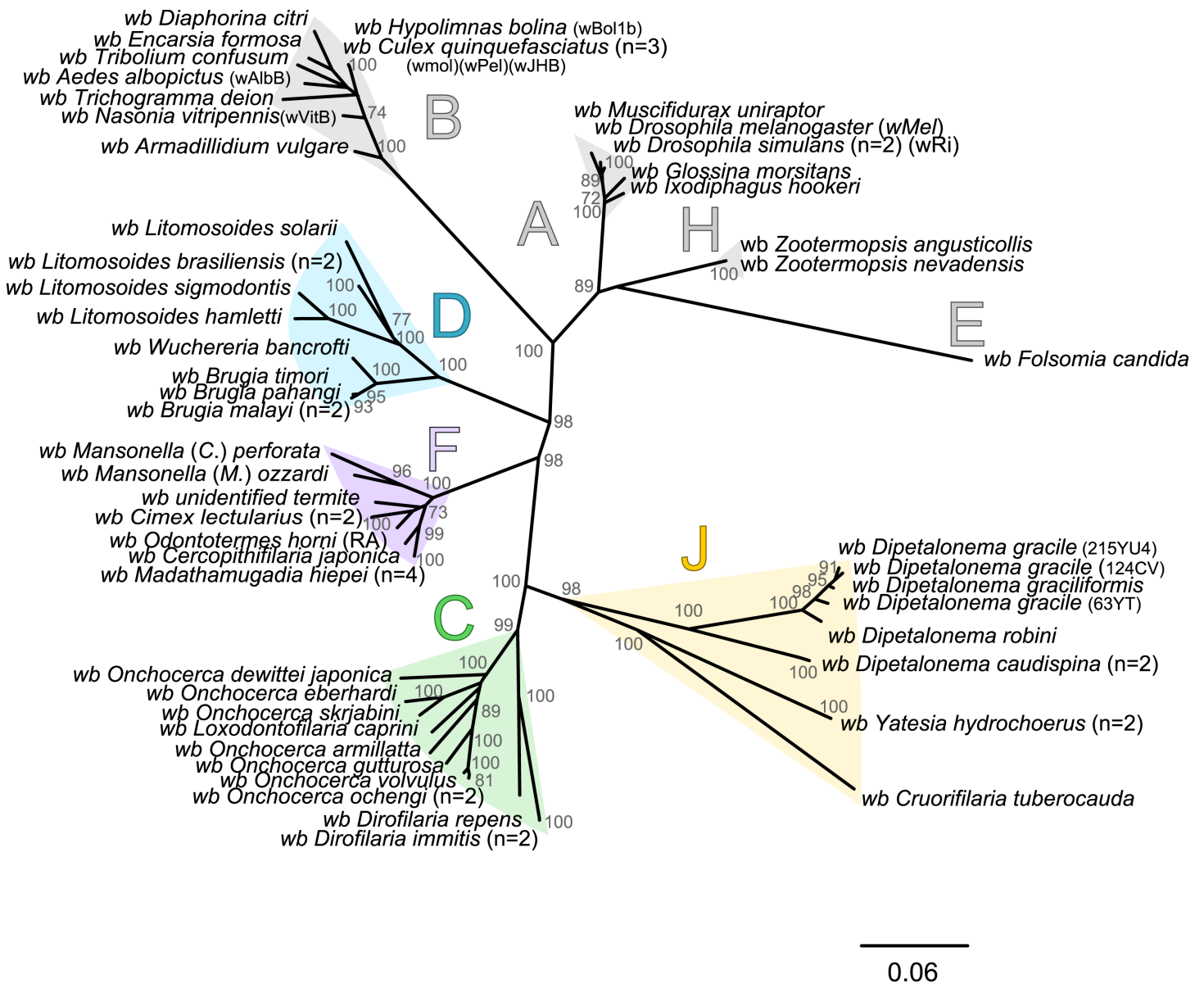


Figure 2 Phylogenetic tree of *Wolbachia* based on 7 markers by Maximum Likelihood. Analysis based on concatenation of 16S rDNA, *dnaA*, *groEL*, *ftsZ*, *coxA*, *fbpA* and *gatB*. The total length of datasets is approximately 4,600 bp. Sixty-four *Wolbachia* strains were analysed. The topology was inferred using Maximum Likelihood (ML) inference using RaxML. Nodes are associated with Bootstrap values based on 1,000 replicates. The *Wolbachia* supergroups (A–H) were identified according to [Werren, Zhang & Guo \(1995\)](#), [Bandi et al. \(1998\)](#), [Lo et al. \(2002\)](#) and [Ros et al. \(2009\)](#). The scale bar indicates the distance in substitutions per nucleotide. Abbreviation: *wb*, *Wolbachia*; n, number of studied specimens.

two distinct J subgroups. However, we do not propose a new supergroup to prevent the multiplication of *Wolbachia* clades. We hold this position due to the following facts: the status of several supergroups is questionable because either they were described only on the basis of a few genetic markers (for example supergroups M and N infecting aphids ([Augustinos et al., 2011](#); [Bing et al., 2014](#))), or they contained only one or few host species such as supergroup J ([Casiraghi et al., 2004](#); [Ros et al., 2009](#)). Up to now, *Wolbachia* in

Table 4 Detection of potential recombination events between *Wolbachia* sequences. Analyses of trace evidence of recombination events were performed using different methods as specified in the first column, and a *p*-value for their significance is indicated in parentheses. Regarding the trace evidence detected, no beginning breakpoint was identified.

Methods	16S rDNA	<i>coxA</i>	<i>gatB</i>	<i>ftsZ</i>	<i>dnaA</i>	<i>fbpA</i>	<i>groEL</i>
RDP	0	0	0	0	0	0	0
GENECONV	0	0	0	0	0	0	0
BootScan	0	0	0	0	0	0	1 ($9,12 \times 10^{-3}$)
MaxChi	7 ($1,7161 \times 10^{-2}$)	0	0	0	0	0	11 ($3,35 \times 10^{-2}$)
Chimaera	0	0	0	0	0	0	0
SiScan	3 ($1,909 \times 10^{-13}$)	0	0	0	0	0	0
3Sequ	0	0	0	0	0	2 ($8,522 \times 10^{-3}$)	0

Dipetalonema gracile was the only representative of supergroup J. It was initially described as a deep branch within the supergroup C (Casiraghi et al., 2004), and then defined as a divergent lineage (Casiraghi et al., 2005; Ros et al., 2009). The accuracy of supergroup J was subsequently questioned, and its insertion into supergroup C has been proposed (Bordenstein et al., 2009; Glowska et al., 2015; Koutsovoulos et al., 2014). Our result clearly supports the accuracy of supergroup J and confirm its position as a sister group of supergroup C as previously suggested (Casiraghi et al., 2005).

Coevolution of *Wolbachia* and Onchocercidae

Since 1998, the hypothesis suggesting that *Wolbachia* is ubiquitous in filariae and co-evolved with them has been commonly accepted (Bandi et al., 1998). However, our recent studies on supergroup F of *Wolbachia* have clearly exposed incongruences with this hypothesis (Ferri et al., 2011; Lefoulon et al., 2012). The key problem in the former studies was that they were based on either a small sampling of *Wolbachia*-infected filarial species and/or a low phylogenetic resolution of the onchocercid evolutionary history. Indeed, the commonly accepted phylogeny of Onchocercidae was erroneous, with distant species considered to be close and vice-versa (Lefoulon et al., 2015). Now, given the 5 strongly supported clades we described within the Onchocercidae (Fig. 1) (Lefoulon et al., 2015), the coevolution of *Wolbachia* and filariae needs to be reassessed. Although a general co-evolutionary pattern was observed (Fig. 3), and the PACo global-fit analysis also indicated a global coevolution between filariae and their *Wolbachia* symbionts ($m_{XY}^2 = 1.097837$, *p*-value <0,001), distinct local features are apparent. Indeed, the superimposition plot shows 7 groups of filariae-*Wolbachia* associations (Fig. 4A), and the relative contribution of each association to the global fit appears strongly unequal (Fig. 4B). The comparison of both filariae and *Wolbachia* phylogenies revealed strong disparities of the co-phylogenies among the different symbiont supergroups (Fig. 3).

Thus, supergroup C *Wolbachia* and their filarial hosts form one cluster as a result of a strong congruence between their phylogenies (Fig. 4A). Each association in this group presents low squared residual values, which are representative of strong co-evolutionary associations (Fig. 4B). Interestingly, in general, supergroup C *Wolbachia* follows the same evolutionary pattern as that of the ONC3 filarial clade (Fig. 3). Two exceptions can

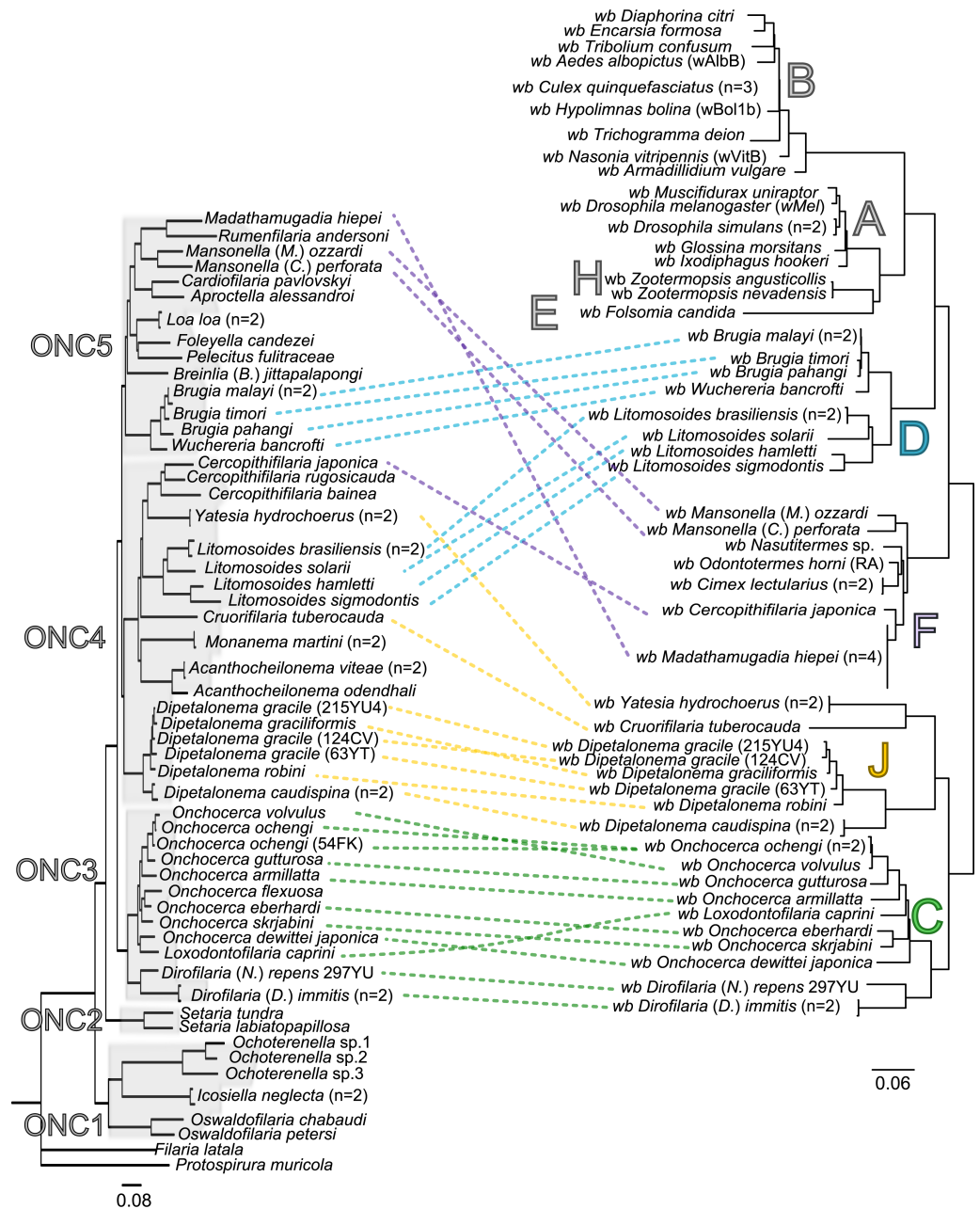


Figure 3 Congruence between filariae and *Wolbachia* phylogenies. The phylogenies of filariae and *Wolbachia* were performed by Maximum Likelihood (ML) inference using RAXML. The scale bar indicates the distance in substitutions per nucleotide. The filariae clades (ONC1-ONC5) were defined according to Lefoulon et al. (2015). The *Wolbachia* supergroups (A-H) were identified according to Werren, Zhang & Guo (1995), Bandi et al. (1998), Lo et al. (2002), and Ros et al. (2009). Abbreviation: *wb*, *Wolbachia*; n, number of studied specimens. Dotted lines show the association between a filarial species and its symbiont. Colors illustrate the bacterial supergroup in filariae.

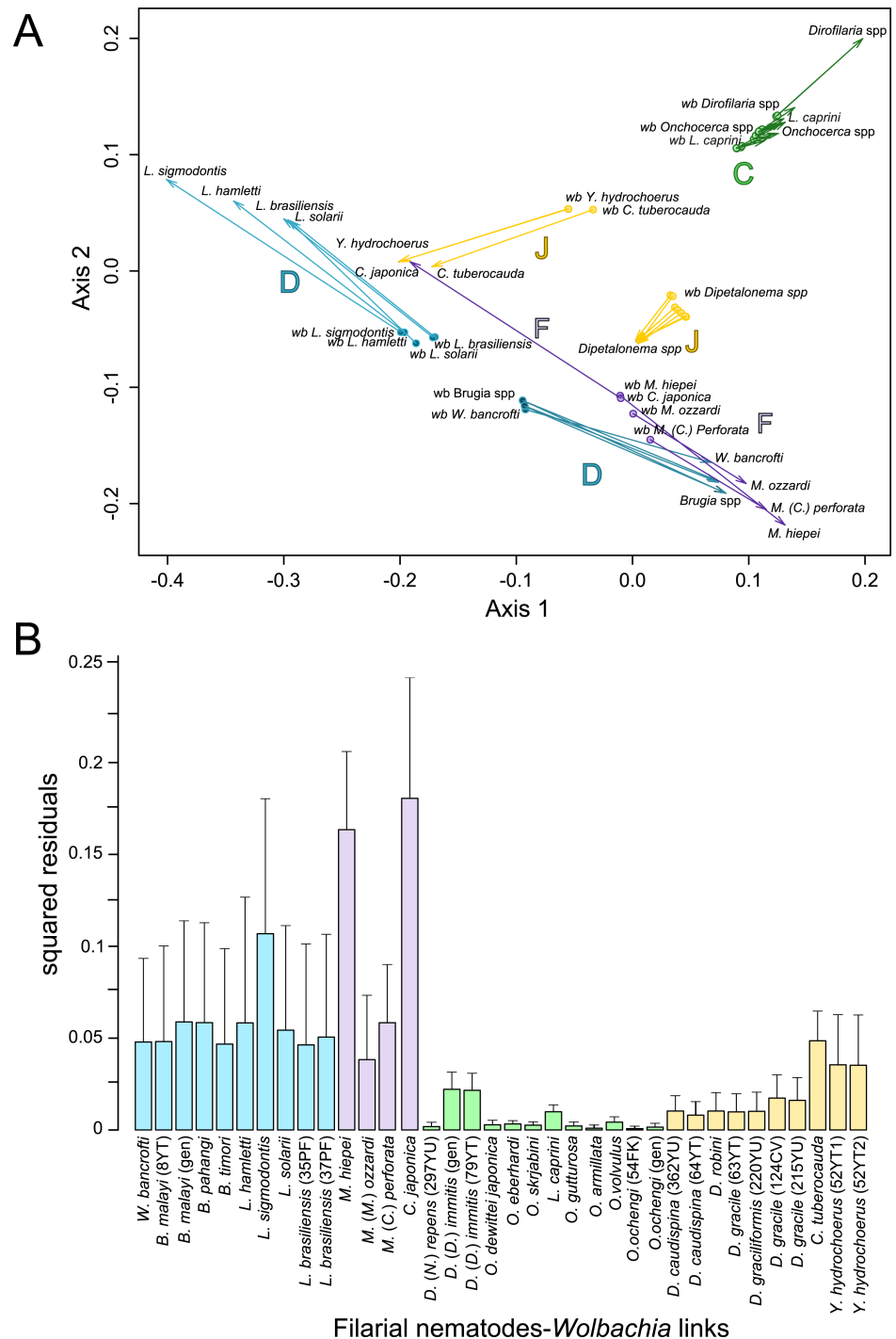


Figure 4 Analysis of coevolution between filariae and *Wolbachia*. A PACo global-fit analysis of *Wolbachia* and their filarial hosts phylogenies was performed. (A) Representative plot of a Procrustes superimposition analysis which minimizes differences between the two partners' principal correspondence coordinates of patristic distances. For each vector, the start point represents the configuration of *Wolbachia* and the arrowhead the configuration of filarial hosts. The vector length represents the global fit (residual sum of squares) which is inversely proportional to the topological congruence. (B) Contribution of each *Wolbachia*-filariae association to a general coevolution. Each bar represents a Jackknifed squared residual and error bars represent upper 95% confidence intervals. Abbreviation: *wb*, *Wolbachia*.

be observed: the position of *Wolbachia* from *Loxodontofilaria caprini* appears not to be congruent, although statistically weakly supported (bootstrap: 42); and *Onchocerca flexuosa* is not infected by *Wolbachia*, which is known to be a secondary loss due to the large number of nuwts in the genome of this species (McNulty et al., 2010).

Supergroup J *Wolbachia* and their filarial hosts are divided in two clusters, one including *Dipetalonema* spp. and their endosymbionts, and the second one including *C. tubero cauda* and *Y. hydrochoerus* and their endosymbionts (Fig. 4A). Within the type J, evolution of *Wolbachia* from *Dipetalonema* species displays a strong congruence with the evolution of their host, unlike *Wolbachia* from *Cruorifilaria* and *Yatesia* (Fig. 4B). Indeed, these two filariae species are not closely related, although they both belong to the same ONC4 clade (Fig. 3). Nonetheless, *C. tubero cauda* and *Y. hydrochoerus* share the same host (*Hydrochoerus hydrochaeris*) and the same neotropical localization as the *Dipetalonema* species; therefore, horizontal transmission is conceivable. Supergroup J *Wolbachia* infect exclusively filariae from ONC4, but this clade also contains five *Wolbachia*-free species: *Acanthocheilonema viteae*, *A. odendhali*, *Monanema martini*, *Cercopithifilaria baina*e and *C. rugosicauda* (Fig. 3). Hence, our results suggest events of horizontal transmission of supergroup J *Wolbachia* in the ONC4 clade, as well as secondary losses.

The supergroups D and F *Wolbachia* and their filarial hosts are each divided into two clusters, supporting an absence of global coevolution between the bacteria and the filariae (Fig. 4). Indeed, the evolution of supergroups D and F are not perfectly congruent with the evolution of their filarial hosts (Fig. 3). Some associations are clearly incongruent with a co-evolutionary hypothesis, such as the relationship between *Wolbachia* and *C. japonica* (supergroup F), *M. hiepei* (supergroup F), *M. (C.) perforata* (supergroup F), and *L. sigmodontis* (supergroup D) (Fig. 4B). Regarding the *Wolbachia* from supergroup D, one subgroup is distributed in the *Litomosoides* group belonging to the ONC4 clade, and a second group is distributed in the *Brugia/Wuchereria* group belonging to the ONC5 clade. The filarial host discontinuity observed in the supergroup D *Wolbachia* suggests that horizontal transfer events occurred between the two filarial host groups. Regarding the supergroup F *Wolbachia*, the bacteria were identified in distant filarial host species (Fig. 3): *Madathamugadia hiepei* and *Mansonella* spp. belonging to the ONC5 clade, and *Cercopithifilaria japonica* belonging to the ONC4 clade. The ONC5 clade also contains 7 *Wolbachia*-free species: *Pelecitus fulitraceae*, *Foleyella candezei*, *L. loa*, *Breinlia (B.) jittapalapongi*, *Aproctella alessandroi*, *Cardiofilaria pavlovskyi* and *Rumenfilaria andersoni*. Supergroup F also has the peculiarity of including some bacteria infecting arthropods species (e.g. *Cimex lectularius* and termite species), supporting one or several horizontal transfers from filariae to arthropods during evolution.

Our current results indicate local patterns of co-evolution and multiple horizontal transmission events of *Wolbachia* within the Onchocercidae family, which are not limited to supergroup F. In addition, supergroup C is the only one to exhibit strong co-speciation with their hosts and not to show any evidence of horizontal transmission events. Recent identification of higher genome plasticity and a lack of synteny within supergroup D compared to supergroup C (Comandatore et al., 2015) supports the uniqueness of supergroup C.

Origin of *Wolbachia* infection

To date, 26 scientific articles have presented a rooted phylogenetic tree of *Wolbachia* and discuss the evolutionary origin of *Wolbachia* using different methods and a variety of datasets (genes, multi-genes or genomes). The majority of these phylogenetic trees were rooted with *Ehrlichia*, *Anaplasma* or *Rickettsia* as outgroups. Among them, 10 have established the origin of *Wolbachia* between symbionts of arthropods (supergroups A and B) and symbionts of filariae (supergroups C, D, and J) (Baldini et al., 2014; Bandi et al., 1998; Comandatore et al., 2013; Dumler et al., 2001; Fenn & Blaxter, 2006; Ferri et al., 2011; Nikoh et al., 2014; Sironi et al., 1995; Taylor & Hoerauf, 1999; Unver et al., 2003); 4 have indicated a rooting in the symbionts of arthropods, and more specifically between supergroups A and B (Anderson & Karr, 2001; Bordenstein & Rosengaus, 2005; Bordenstein et al., 2009; Giordano, O'Neill & Robertson, 1995; Koutsovoulos et al., 2014); 6 have found a rooting in the symbionts of filariae (Casiraghi et al., 2001a; Casiraghi et al., 2004; Casiraghi et al., 2001b; Czarnetzki & Tebbe, 2004; Dittmar & Whiting, 2004; Rowley, Raven & McGraw, 2004); 2 studies have proposed the symbiont of *Radopholus similis* as a sister group of all other *Wolbachia* (Glowska et al., 2015; Haegeman et al., 2009); and finally 3 studies, including a recent phylogenomic analysis (Casiraghi et al., 2003; Gerth et al., 2014; Ramirez-Puebla et al., 2015), have presented the symbiont of *Folsomia candida* (supergroup E) as a sister group of all other *Wolbachia*.

Our rooted phylogenetic tree of *Wolbachia* is based on the concatenation of six genes (*groEL*, *ftsZ*, *dnaA*, *gatB*, *fbpA* and *coxA*) and presents the supergroup B of *Wolbachia* as a sister group of all other *Wolbachia* (Fig. 5). However, our analysis also reveals high branch distance between outgroups and ingroups suggesting that the choice of *Ehrlichia* and *Anaplasma* as outgroups induces a long-branch attraction (LBA) artefact due to their high genetic divergence compared to ingroups, as previously suggested (Bordenstein et al., 2009). Moreover, when their outgroups are included in the alignments, substitution saturation was also detected by the Xia method (Xia et al., 2003) for three molecular markers (*coxA*, p -value = 0.92; *gatB*, p -value = 0.15; and *dnaA*, p -value = 0.83) out of 7 analysed (Table 5). Substitution saturation decreases phylogenetic information contained in the sequences and generates phylogenetic reconstruction which does not reveal correct phylogenetic relationships (Xia & Xie, 2001; Xia et al., 2003). Thus, without identification of accurate outgroups, rooting of *Wolbachia* phylogeny and subsequent analyses are misleading. Consequently, alternative methods need to be investigated.

The current phylogenies of both *Wolbachia* and their filarial hosts allow us to attempt an explanation of the symbiotic history on the basis of the most parsimonious co-phylogeny scenario. Our data raise the hypothesis that *Wolbachia* infection in the onchocercid family was acquired between the diversification of ONC2 (Setarinae) and the later derived clades (Fig. 3). Phylogenetic and co-evolutionary data suggest that supergroup C has diverged in the ONC3 filarial clade, which is the first diverged clade from ONC2 (Fig. 3). These data imply that supergroup C of *Wolbachia* would be the ancestral symbionts. All other alternatives involve numerous horizontal transfers of *Wolbachia* within the Onchocercidae. Upon agreement on the basal position of supergroup C in the co-phylogeny of *Wolbachia* and filariae, a “walking” method can be used to analyse the other bacteria supergroups

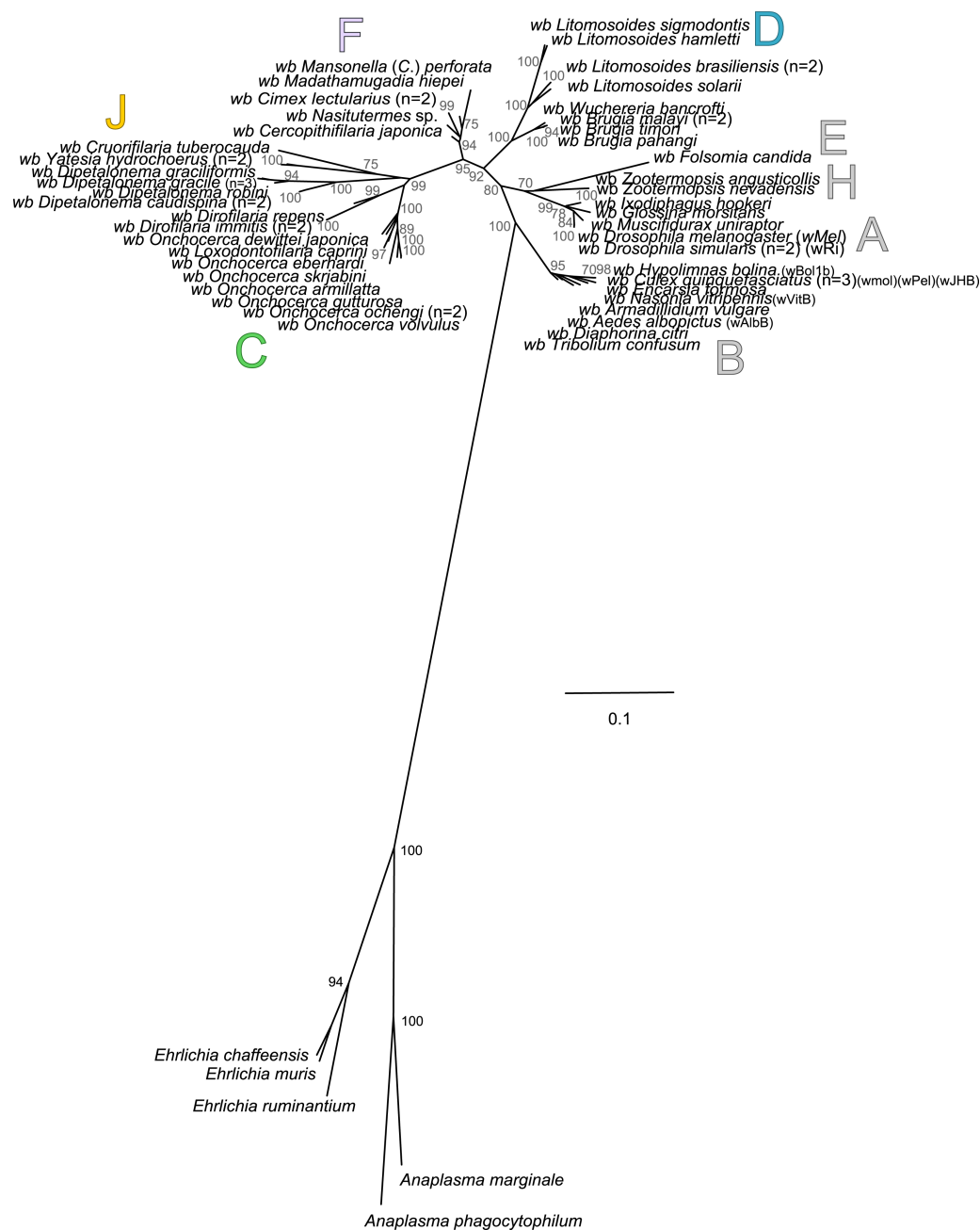


Figure 5 Rooted phylogenetic tree of *Wolbachia* based on 7 markers by Maximum Likelihood. Analysis based on partitioned concatenation of *dnaA*, *groEL*, *ftsZ*, *coxA*, *fbpA* and *gatB* amino acid sequences. The total length of datasets is approximately 1,100 aa. 54 *Wolbachia* strains were analysed. The species *Anaplasma marginale*, *A. phagocytophilum*, *Ehrlichia chaffeensis*, *E. muris* and *E. ruminantium* species were used as outgroups. The topology was inferred using Maximum Likelihood (ML) inference using phyML. Nodes are associated with Bootstrap values based on 500 replicates. The *Wolbachia* supergroups (A–H) were identified according to Werren, Zhang & Guo (1995), Bandi et al. (1998), Lo et al. (2002) and Ros et al. (2009). The scale bar indicates the distance in substitutions per nucleotide. Abbreviation: *wb*, *Wolbachia*; n, number of studied specimens.

Table 5 Detection of substitution saturation in dataset. Detection of substitution saturation in alignments of *fbpA*, *ftsZ*, *coxA*, 16S rDNA, *gatB*, *groEL*, and *dnaA* markers with and without inclusion of outgroups by the Xia method (2003). “N” indicates the number of operational taxonomic units (OTU) simultaneously analysed. “DF” indicates the number of nucleotides considered by the analysis. “ISS” is the index of substitution saturation computed by the Xia method (2003). “ISS.cSym” and “ISS.cAsym” are the theoretical critical substitution saturation index for extreme symmetric or asymmetric topologies, respectively. Saturation is detected if ISS is superior to ISS critical. The difference between indices is compared by a two-tailed *t* test, and the *p*-values are indicated for each alignment.

Markers	N	DF	ISS	ISS.cSym	<i>p</i> -value	ISS.cAsym	<i>p</i> -value
<i>fbpA</i>	32	462	0.244	0.698	0	0.372	0
<i>fbpA</i> + outgp	32	461	0.281	0.698	0	0.371	0.0002
<i>ftsZ</i>	32	515	0.177	0.704	0	0.378	0
<i>ftsZ</i> + outgp	32	518	0.246	0.704	0	0.378	0
<i>coxA</i>	32	488	0.274	0.701	0	0.376	0.0001
<i>coxA</i> + outgp	32	489	0.378	0.701	0	0.376	0.9229
16S rDNA	32	1,255	0.339	0.763	0	0.471	0
16S rDNA + outgp	32	1,251	0.327	0.763	0	0.471	0
<i>gatB</i>	32	564	0.251	0.709	0	0.381	0
<i>gatB</i> + outgp	32	558	0.338	0.708	0	0.38	0.155
<i>groEL</i>	32	745	0.13	0.727	0	0.405	0
<i>groEL</i> + outgp	32	836	0.267	0.735	0	0.419	0
<i>dnaA</i>	32	407	0.259	0.692	0	0.363	0
<i>dnaA</i> + outgp	32	410	0.357	0.692	0	0.364	0.8301

Notes.

Abbreviation: Outgp, outgroups.

(Fig. 3): supergroup J is thus the closest to supergroup C, infecting filarial species in ONC4 clade; subsequently, supergroups F and D appear, infecting respectively both ONC4 and ONC5 and showing horizontal transfers and losses, but also local coevolution.

To further analyse the coevolution scenarios, an event-based method using Jane v4 (Conow et al., 2010) was applied to our data, computing each scenario while minimizing the cost of evolutionary events. Focusing on *Wolbachia* from filariae reveals that a rooting of the phylogeny of *Wolbachia* within supergroup C represents the co-evolutionary scenario associated with the lowest cost (Figs. 6A and 6B). Cost differences between different *Wolbachia*-rooted tree analyses are increased if a time constraint is applied to limit host switch events which could be inconsistent with filarial phylogeny (see Material and Method) (Figs. 6A and 6B). Similarly, the analysis including *Wolbachia* from arthropods also suggests a rooting of the phylogenetic tree of *Wolbachia* within supergroup C because of its lowest co-evolutionary scenario cost, even if cost differences are weak (Fig. 6C). Unfortunately, it would be difficult to increase these cost differences by defining time zones, as for analysis performed with the *Wolbachia* from filariae (see Material and Method). Indeed, timescale evolution of filariae is unknown due to absence of paleontological data, so it is not possible to position their speciation versus the evolutionary history of arthropods. The two proposed analyses using Jane have limitations (such as time zone definition), but all results suggest that supergroup C is the ancestrally derived group of nematode *Wolbachia* symbionts. This

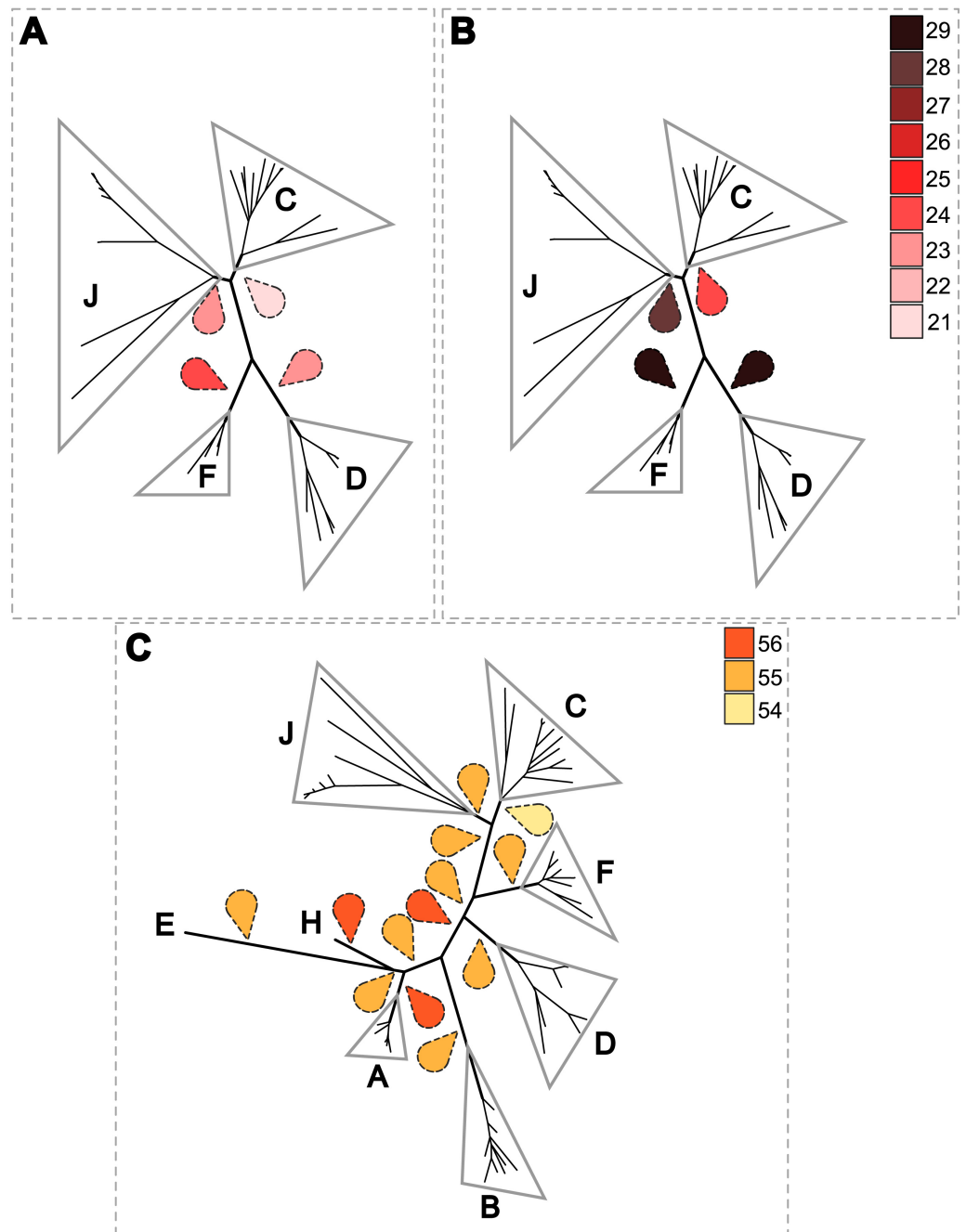


Figure 6 Estimation of the cost of co-evolutionary scenarios based on different rooted *Wolbachia* phylogenies. An event-cost method with Jane software was performed. Representations of the costless co-evolutionary reconstructions between *Wolbachia* and their hosts are shown using the following regime cost criteria: co-speciation = 0; duplication = 1; loss = 1; and duplication and host switch = 2. Different roots for the phylogeny of *Wolbachia* were tested. The colored drop tips indicate the examined rooting and the color represents the lowest associated cost. (A) co-evolutionary reconstruction between 36 *Wolbachia* and their filarial hosts without time constraint. (B) co-evolutionary reconstruction between 36 *Wolbachia* and their filarial hosts with time constraint. (C) co-evolutionary reconstructions between 60 *Wolbachia* and their filarial and arthropod hosts.

scenario may lead to the hypothesis that *Wolbachia* have primarily infected and diverged within the filarial species and then were transferred from the supergroup D *Wolbachia* to arthropod species.

Such a hypothesis on the origin of *Wolbachia* does not simply change the reading of the phylogenetic tree, but may also improve our understanding of *Wolbachia* adaptation to their hosts at the evolutionary scale. Indeed, the genome structures of *Wolbachia* infecting arthropods are relatively large and plastic, including numerous mobile elements (repeated elements, transposons, and phages); whereas symbionts of filariae present more compact genomes without actively mobile DNA. Thus, the genomic structure could be regarded differently, as the acquisition of plasticity and increased insertions of mobile DNA may be patterns linked to a change of host range. Recently, analyses of complete genomes of *Wolbachia* indicated that symbionts belonging to supergroup C from *Onchocerca ochengi* (*wOo*) and *Dirofilaria immitis* (*wDi*), present specific genomic features including reduced genome size, a low number of genomic rearrangements, fewer insertion sequences, and losses or pseudogenization of numerous genes (e.g., 88 unique losses for *wOo*) (Comandatore et al., 2015; Darby et al., 2012). These data would support a reductive evolution of supergroup C (Darby et al., 2012). However, it was also suggested that such features are characteristic of endosymbiotic bacteria with long-lasting relationships with their hosts (Comandatore et al., 2015), which is consistent with our results showing that supergroup C is strongly co-evolved with its hosts. Nevertheless, we cannot rule out that *Wolbachia* could have originally had a very plastic genome structure and reductive evolution may have been promoted by strong coevolution with their hosts.

In conclusion, we show that patterns of coevolution between *Wolbachia* and their filarial hosts are much more complex than previously assumed, with numerous examples of secondary losses of symbionts and horizontal transfers between clades. Strict coevolution is restricted to filarial clade ONC 3 with *Wolbachia* in supergroup C. Moreover, since tree-rooting options are contentious for *Wolbachia*, we have applied a series of novel analyses to address the question of the origin of the *Wolbachia* symbiosis. These methods, although not without their own limitations, place the origin within supergroup C rather than an arthropod-specific supergroup.

ACKNOWLEDGEMENTS

The authors wish to thank the following collaborators for the new material they provided: Dr. MO Plantard (specimen of *Ixodiphagus hookeri*); Dr. R Guerrero (specimen of *Nasutitermes* sp.); and Dr. Thomas Tully (specimen of *Folsomia candida*). We also thank Dr. N Lhermitte-Vallarino for her assistance with the experimental cycle of *Litomosoides sigmodontis*.

ADDITIONAL INFORMATION AND DECLARATIONS

Funding

This work was supported by European Community grants FP7- HEALTH-2010-243121 and the Interdisciplinary Programs of the MNHN (ATM Biodiversité actuelle et fossile

and ATM Taxonomie moléculaire: DNA Barcode et gestion durable des collections). SU holds a Grant of the Ministry of Higher Education of Malaysia (FRGS FP020-2012). The funders had no role in study design, data collection and analysis, decision to publish, or preparation of the manuscript.

Grant Disclosures

The following grant information was disclosed by the authors:

European Community: FP7- HEALTH-2010-24312.

Interdisciplinary Programs of the MNHN.

Ministry of Higher Education of Malaysia: FRGS FP020-2012.

Competing Interests

The authors declare there are no competing interests.

Author Contributions

- Emilie Lefoulon conceived and designed the experiments, performed the experiments, analyzed the data, wrote the paper, prepared figures and/or tables.
- Odile Bain conceived and designed the experiments, contributed reagents/materials/analysis tools.
- Benjamin L. Makepeace wrote the paper, reviewed drafts of the paper.
- Cyrille d'Haese contributed reagents/materials/analysis tools, reviewed drafts of the paper.
- Shigehiko Uni contributed reagents/materials/analysis tools.
- Coralie Martin conceived and designed the experiments, wrote the paper.
- Laurent Gavotte conceived and designed the experiments, analyzed the data, wrote the paper.

Animal Ethics

The following information was supplied relating to ethical approvals (i.e., approving body and any reference numbers):

The DNA samples were obtained from *Lefoulon et al. (2015)* (DOI: [10.1371/journal.pntd.0004233](https://doi.org/10.1371/journal.pntd.0004233)). In this published article it was indicated that: “Jirds are maintained in the animal facilities of UMR7245, MNHN, as hosts of *L. sigmodontis*; they are inoculated intraperitoneally with 70 infective larvae and sacrificed 60 days post infection, upon which adult worms are recovered from the peritoneal cavity. All experimental procedures were carried out in strict accordance with the EU Directive 2010/63/UE and the relevant national legislation, namely the French “Décret no 2013-118, 1er février 2013, Ministère de l’Agriculture, de l’Agroalimentaire et de la Forêt”, National licence number 75-1415 approved animal experiments: protocols were approved by the ethical committee of the Museum National d’Histoire Naturelle (Comité Cuvier, Licence: 68-002) and by the “Direction départementale de la cohésion sociale et de la protection des populations” (DDCSPP) (No. C75-05-15).

Some non-human vertebrates were captured for experimental procedures, subject to the ethics approval of the relevant national bodies, while others were obtained at abattoirs

or donated to the MNHN by hunters or veterinarians (Table S1). The MNHN does not solicit nor compensate for these donations.”

Field Study Permissions

The following information was supplied relating to field study approvals (i.e., approving body and any reference numbers):

All information is indicated in Table S1.

- Marine Mammal Protection Act; 14327 NMML.
- Universidad Nacional Agraria La Molina Ethical Committee; WGS84.
- Ethical committee of the Museum National d’Histoire Naturelle; EU Directive; Comitee Cuvier Licence: 68-002; DDCSPP: No. C75-05-15.
- BESK; 55/17.04.2006.
- CNRS; Prob-DOM-06-PCVI-0007.
- National Agriculture and Forestry Research Institute; BDIV 012 CERoPath.
- Ministerio del Ambiente de la Republica Bolivariana de Venezuela; Nu 33/2007.
- Brazilian Institute of the Environment and Renewable Resources; 261/05, NUFAS/MG-IBAMA.
- Peru: local hunting (food collection).
- Venezuela: national hunting (population regulation + food collection).

DNA Deposition

The following information was supplied regarding the deposition of DNA sequences:

GenBank Data Library: [KU255197](#) to [KU255395](#).

Data Availability

The following information was supplied regarding data availability:

TreeBase: <http://purl.org/phylo/treebase/phyloids/study/TB2:S19008>.

Supplemental Information

Supplemental information for this article can be found online at <http://dx.doi.org/10.7717/peerj.1840#supplemental-information>.

REFERENCES

- Abascal F, Zardoya R, Posada D. 2005.** ProtTest: selection of best-fit models of protein evolution. *Bioinformatics* 21:2104–2105 DOI [10.1093/bioinformatics/bti263](https://doi.org/10.1093/bioinformatics/bti263).
- Anderson CL, Karr TL. 2001.** *Wolbachia*: evolutionary novelty in a rickettsial bacteria. *BMC Evolutionary Biology* 1:10 DOI [10.1186/1471-2148-1-10](https://doi.org/10.1186/1471-2148-1-10).
- Augustinos AA, Santos-Garcia D, Dionyssopoulou E, Moreira M, Papapanagiotou A, Scarvelakis M, Doudoumis V, Ramos S, Aguiar AF, Borges PA, Khadem M, Latorre A, Tsiamis G, Bourtzis K. 2011.** Detection and characterization of *Wolbachia* infections in natural populations of aphids: is the hidden diversity fully unraveled? *PLoS ONE* 6:e28695 DOI [10.1371/journal.pone.0028695](https://doi.org/10.1371/journal.pone.0028695).

- Bain O, Casiraghi M, Martin C, Uni S. 2008.** The Nematode Filarioidea: critical analysis linking molecular and traditional approaches. *Parasite* **15**:342–348 DOI [10.1051/parasite/2008153342](https://doi.org/10.1051/parasite/2008153342).
- Balbuena JA, Miguez-Lozano R, Blasco-Costa I. 2013.** PACo: a novel procrustes application to cophylogenetic analysis. *PLoS ONE* **8**:e61048 DOI [10.1371/journal.pone.0061048](https://doi.org/10.1371/journal.pone.0061048).
- Baldini F, Segata N, Pompon J, Marcenac P, Robert Shaw W, Dabire RK, Diabate A, Levashina EA, Catteruccia F. 2014.** Evidence of natural *Wolbachia* infections in field populations of *Anopheles gambiae*. *Nature Communications* **5**:Article 3985 DOI [10.1038/ncomms4985](https://doi.org/10.1038/ncomms4985).
- Baldo L, Ayoub NA, Hayashi CY, Russell JA, Stahlhut JK, Werren JH. 2008.** Insight into the routes of *Wolbachia* invasion: high levels of horizontal transfer in the spider genus *Agelenopsis* revealed by *Wolbachia* strain and mitochondrial DNA diversity. *Molecular Ecology* **17**:557–569 DOI [10.1111/j.1365-294X.2007.03608.x](https://doi.org/10.1111/j.1365-294X.2007.03608.x).
- Baldo L, Bordenstein S, Wernegreen JJ, Werren JH. 2006a.** Widespread recombination throughout *Wolbachia* genomes. *Molecular Biology and Evolution* **23**:437–449 DOI [10.1093/molbev/msj049](https://doi.org/10.1093/molbev/msj049).
- Baldo L, Dunning Hotopp JC, Jolley KA, Bordenstein SR, Biber SA, Choudhury RR, Hayashi C, Maiden MC, Tettelin H, Werren JH. 2006b.** Multilocus sequence typing system for the endosymbiont *Wolbachia pipientis*. *Applied and Environmental Microbiology* **72**:7098–7110 DOI [10.1128/AEM.00731-06](https://doi.org/10.1128/AEM.00731-06).
- Bandi C, Anderson TJ, Genchi C, Blaxter ML. 1998.** Phylogeny of *Wolbachia* in filarial nematodes. *Proceedings of the Royal Society B: Biological Sciences* **265**:2407–2413 DOI [10.1098/rspb.1998.0591](https://doi.org/10.1098/rspb.1998.0591).
- Bandi C, McCall JW, Genchi C, Corona S, Venco L, Sacchi L. 1999.** Effects of tetracycline on the filarial worms *Brugia pahangi* and *Dirofilaria immitis* and their bacterial endosymbionts *Wolbachia*. *International Journal for Parasitology* **29**:357–364 DOI [10.1016/S0020-7519\(98\)00200-8](https://doi.org/10.1016/S0020-7519(98)00200-8).
- Bazzocchi C, Jamnongluk W, O'Neill SL, Anderson TJ, Genchi C, Bandi C. 2000.** wsp gene sequences from the *Wolbachia* of filarial nematodes. *Current Microbiology* **41**:96–100 DOI [10.1007/s002840010100](https://doi.org/10.1007/s002840010100).
- Bing XL, Xia WQ, Gui JD, Yan GH, Wang XW, Liu SS. 2014.** Diversity and evolution of the *Wolbachia* endosymbionts of *Bemisia* (Hemiptera: Aleyrodidae) whiteflies. *Ecology and Evolution* **4**:2714–2737 DOI [10.1002/ece3.1126](https://doi.org/10.1002/ece3.1126).
- Boni MF, Posada D, Feldman MW. 2007.** An exact nonparametric method for inferring mosaic structure in sequence triplets. *Genetics* **176**:1035–1047 DOI [10.1534/genetics.106.068874](https://doi.org/10.1534/genetics.106.068874).
- Bordenstein S, Fitch D, Werren J. 2003.** Absence of *Wolbachia* in nonfiliariid nematodes. *Journal of Nematology* **35**:266–270.
- Bordenstein SR, Paraskevopoulos C, Dunning Hotopp JC, Sapountzis P, Lo N, Bandi C, Tettelin H, Werren JH, Bourtzis K. 2009.** Parasitism and mutualism in *Wolbachia*: what the phylogenomic trees can and cannot say. *Molecular Biology and Evolution* **26**:231–241 DOI [10.1093/molbev/msn243](https://doi.org/10.1093/molbev/msn243).

- Bordenstein S, Rosengaus RB. 2005.** Discovery of a novel *Wolbachia* super group in Isoptera. *Current Microbiology* 51:393–398 DOI [10.1007/s00284-005-0084-0](https://doi.org/10.1007/s00284-005-0084-0).
- Bourtzis K, Miller TA. 2003.** *Insect symbiosis*. Vol. 1. Boca Raton: CRC Press, 347 pp.
- Casiraghi M, Anderson TJ, Bandi C, Bazzocchi C, Genchi C. 2001a.** A phylogenetic analysis of filarial nematodes: comparison with the phylogeny of *Wolbachia* endosymbionts. *Parasitology* 122(Pt 1):93–103 DOI [10.1017/S0031182000007149](https://doi.org/10.1017/S0031182000007149).
- Casiraghi M, Bain O, Guerrero R, Martin C, Pocacqua V, Gardner SL, Franceschi A, Bandi C. 2004.** Mapping the presence of *Wolbachia pipientis* on the phylogeny of filarial nematodes: evidence for symbiont loss during evolution. *International Journal for Parasitology* 34:191–203 DOI [10.1016/j.ijpara.2003.10.004](https://doi.org/10.1016/j.ijpara.2003.10.004).
- Casiraghi M, Bordenstein SR, Baldo L, Lo N, Beninati T, Wernegreen JJ, Werren JH, Bandi C. 2005.** Phylogeny of *Wolbachia pipientis* based on *gltA*, *groEL* and *ftsZ* gene sequences: clustering of arthropod and nematode symbionts in the F supergroup, and evidence for further diversity in the *Wolbachia* tree. *Microbiology* 151:4015–4022 DOI [10.1099/mic.0.28313-0](https://doi.org/10.1099/mic.0.28313-0).
- Casiraghi M, Favia G, Cancrini G, Bartoloni A, Bandi C. 2001b.** Molecular identification of *Wolbachia* from the filarial nematode *Mansonella ozzardi*. *Parasitology Research* 87:417–420 DOI [10.1007/s004360000368](https://doi.org/10.1007/s004360000368).
- Casiraghi M, Werren JH, Bazzocchi C, Biserni A, Bandi C. 2003.** *dnaA* gene sequences from *Wolbachia pipientis* support subdivision into supergroups and provide no evidence for recombination in the lineages infecting nematodes. *Parassitologia* 45:13–18.
- Charleston MA. 1998.** Jungles: a new solution to the host/parasite phylogeny reconciliation problem. *Mathematical Biosciences* 149:191–223 DOI [10.1016/S0025-5564\(97\)10012-8](https://doi.org/10.1016/S0025-5564(97)10012-8).
- Comandatore F, Cordaux R, Bandi C, Blaxter M, Darby A, Makepeace BL, Montagna M, Sasser D. 2015.** Supergroup C *Wolbachia*, mutualist symbionts of filarial nematodes, have a distinct genome structure. *Open Biology* 5:e150099 DOI [10.1098/rsob.150099](https://doi.org/10.1098/rsob.150099).
- Comandatore F, Sasser D, Montagna M, Kumar S, Koutsovoulos G, Thomas G, Repton C, Babayan SA, Gray N, Cordaux R, Darby A, Makepeace B, Blaxter M. 2013.** Phylogenomics and analysis of shared genes suggest a single transition to mutualism in *Wolbachia* of nematodes. *Genome Biology and Evolution* 5:1668–1674 DOI [10.1093/gbe/evt125](https://doi.org/10.1093/gbe/evt125).
- Conow C, Fielder D, Ovadia Y, Libeskind-Hadas R. 2010.** Jane: a new tool for the cophylogeny reconstruction problem. *Algorithms for Molecular Biology* 5:Article 16 DOI [10.1186/1748-7188-5-16](https://doi.org/10.1186/1748-7188-5-16).
- Czarnetzki AB, Tebbe CC. 2004.** Detection and phylogenetic analysis of *Wolbachia* in Collembola. *Environmental Microbiology* 6:35–44.
- Darby AC, Armstrong SD, Bah GS, Kaur G, Hughes MA, Kay SM, Koldkjaer P, Radford AD, Blaxter ML, Tanya VN, Trees AJ, Cordaux R, Wastling JM, Makepeace BL. 2012.** Analysis of gene expression from the *Wolbachia* genome of a filarial nematode

- supports both metabolic and defensive roles within the symbiosis. *Genome Research* 22:2467–2477 DOI 10.1101/gr.138420.112.
- Darriba D, Taboada GL, Doallo R, Posada D. 2012.** jModelTest 2: more models, new heuristics and parallel computing. *Nature Methods* 9:772 DOI 10.1038/nmeth.2109.
- Desjardins CA, Cerqueira GC, Goldberg JM, Dunning Hotopp JC, Haas BJ, Zucker J, Ribeiro JM, Saif S, Levin JZ, Fan L, Zeng Q, Russ C, Wortman JR, Fink DL, Birren BW, Nutman TB. 2013.** Genomics of *Loa loa*, a *Wolbachia*-free filarial parasite of humans. *Nature Genetics* 45:495–500 DOI 10.1038/ng.2585.
- Dittmar K, Whiting MF. 2004.** New *Wolbachia* endosymbionts from Nearctic and Neotropical fleas (Siphonaptera). *Journal of Parasitology* 90:953–957 DOI 10.1645/GE-186R.
- Dumler JS, Barbet AF, Bekker CP, Dasch GA, Palmer GH, Ray SC, Rikihisa Y, Rurangirwa FR. 2001.** Reorganization of genera in the families Rickettsiaceae and Anaplasmataceae in the order Rickettsiales: unification of some species of *Ehrlichia* with *Anaplasma*, *Cowdria* with *Ehrlichia* and *Ehrlichia* with *Neorickettsia*, descriptions of six new species combinations and designation of *Ehrlichia equi* and ‘HGE agent’ as subjective synonyms of *Ehrlichia phagocytophila*. *International Journal of Systematic and Evolutionary Microbiology* 51:2145–2165 DOI 10.1099/00207713-51-6-2145.
- Duron O, Gavotte L. 2007.** Absence of *Wolbachia* in nonfilarid worms parasitizing arthropods. *Current Microbiology* 55:193–197 DOI 10.1007/s00284-006-0578-4.
- Edgar RC. 2004.** MUSCLE: a multiple sequence alignment method with reduced time and space complexity. *BMC Bioinformatics* 5:113 DOI 10.1186/1471-2105-5-113.
- Fenn K, Blaxter M. 2006.** *Wolbachia* genomes: revealing the biology of parasitism and mutualism. *Trends in Parasitology* 22:60–65 DOI 10.1016/j.pt.2005.12.012.
- Ferri E, Bain O, Barbuto M, Martin C, Lo N, Uni S, Landmann F, Baccei SG, Guerrero R, De Souza Lima S, Bandi C, Wanji S, Diagne M, Casiraghi M. 2011.** New insights into the evolution of *Wolbachia* infections in filarial nematodes inferred from a large range of screened species. *PLoS ONE* 6:e20843 DOI 10.1371/journal.pone.0020843.
- Foster JM, Landmann F, Ford L, Johnston KL, Elsasser SC, Schulte-Hostedde AI, Taylor MJ, Slatko BE. 2014.** Absence of *Wolbachia* endobacteria in the human parasitic nematode *Dracunculus medinensis* and two related *Dracunculus* species infecting wildlife. *Parasites and Vectors* 7:Article 140 DOI 10.1186/1756-3305-7-140.
- Gerth M, Gansauge MT, Weigert A, Bleidorn C. 2014.** Phylogenomic analyses uncover origin and spread of the *Wolbachia* pandemic. *Nature Communications* 5:Article 5117 DOI 10.1038/ncomms6117.
- Gerth M, Rothe J, Bleidorn C. 2013.** Tracing horizontal *Wolbachia* movements among bees (Anthophila): a combined approach using multilocus sequence typing data and host phylogeny. *Molecular Ecology* 22:6149–6162 DOI 10.1111/mec.12549.
- Gibbs MJ, Armstrong JS, Gibbs AJ. 2000.** Sister-scanning: a Monte Carlo procedure for assessing signals in recombinant sequences. *Bioinformatics* 16:573–582 DOI 10.1093/bioinformatics/16.7.573.

- Giordano R, O'Neill SL, Robertson HM. 1995.** *Wolbachia* infections and the expression of cytoplasmic incompatibility in *Drosophila sechellia* and *D. mauritiana*. *Genetics* **140**:1307–1317.
- Glowska E, Dragun-Damian A, Dabert M, Gerth M. 2015.** New *Wolbachia* supergroups detected in quill mites (Acari: Syringophilidae). *Infection, Genetics and Evolution* **30**:140–146 DOI [10.1016/j.meegid.2014.12.019](https://doi.org/10.1016/j.meegid.2014.12.019).
- Gouy M, Guindon S, Gascuel O. 2010.** SeaView version 4: a multiplatform graphical user interface for sequence alignment and phylogenetic tree building. *Molecular Biology and Evolution* **27**:221–224 DOI [10.1093/molbev/msp259](https://doi.org/10.1093/molbev/msp259).
- Haegeman A, Vanholme B, Jacob J, Vandekerckhove TT, Claeys M, Borgonie G, Gheysen G. 2009.** An endosymbiotic bacterium in a plant-parasitic nematode: member of a new *Wolbachia* supergroup. *International Journal for Parasitology* **39**:1045–1054 DOI [10.1016/j.ijpara.2009.01.006](https://doi.org/10.1016/j.ijpara.2009.01.006).
- Hoerauf A, Mand S, Volkmann L, Büttner M, Marfo-Debrekyei Y, Taylor M, Adjei O, Büttner DW. 2003.** Doxycycline in the treatment of human onchocerciasis: kinetics of *Wolbachia* endobacteria reduction and of inhibition of embryogenesis in female *Onchocerca* worms. *Microbes and Infection* **5**:261–273 DOI [10.1016/S1286-4579\(03\)00026-1](https://doi.org/10.1016/S1286-4579(03)00026-1).
- Hosokawa T, Koga R, Kikuchi Y, Meng XY, Fukatsu T. 2010.** *Wolbachia* as a bacteriocyte-associated nutritional mutualist. *Proceedings of the National Academy of Sciences of the United States of America* **107**:769–774 DOI [10.1073/pnas.0911476107](https://doi.org/10.1073/pnas.0911476107).
- Koutsovoulos G, Makepeace B, Tanya VN, Blaxter M. 2014.** Palaeosymbiosis revealed by genomic fossils of *Wolbachia* in a strongyloidean nematode. *PLoS Genetics* **10**:e1004397 DOI [10.1371/journal.pgen.1004397](https://doi.org/10.1371/journal.pgen.1004397).
- Kozek WJ. 1971.** Ultrastructure of the microfilaria of *Dirofilaria immitis*. *Journal of Parasitology* **57**:1052–1067 DOI [10.2307/3277865](https://doi.org/10.2307/3277865).
- Kozek WJ. 1977.** Transovarially-transmitted intracellular microorganisms in adult and larval stages of *Brugia malayi*. *Journal of Parasitology* **63**:992–1000 DOI [10.2307/3279832](https://doi.org/10.2307/3279832).
- Kramer LH, Passeri B, Corona S, Simoncini L, Casiraghi M. 2003.** Immunohistochemical/immunogold detection and distribution of the endosymbiont *Wolbachia* of *Dirofilaria immitis* and *Brugia pahangi* using a polyclonal antiserum raised against WSP (*Wolbachia* surface protein). *Parasitology Research* **89**:381–386 DOI [10.1007/s00436-002-0765-6](https://doi.org/10.1007/s00436-002-0765-6).
- Lefoulon E, Bain O, Bourret J, Junker K, Guerrero R, Canizales I, Kuzmin Y, Satoto TB, Cardenas-Callirgos JM, De Souza Lima S, Raccurt C, Mutafchiev Y, Gavotte L, Martin C. 2015.** Shaking the tree: multi-locus sequence typing usurps current onchocercid (Filarial Nematode) phylogeny. *PLoS Neglected Tropical Diseases* **9**:e0004233 DOI [10.1371/journal.pntd.0004233](https://doi.org/10.1371/journal.pntd.0004233).
- Lefoulon E, Gavotte L, Junker K, Barbuto M, Uni S, Landmann F, Laaksonen S, Saari S, Nikander S, De Souza Lima S, Casiraghi M, Bain O, Martin C. 2012.** A new type F *Wolbachia* from Splendidofilariinae (Onchocercidae) supports the recent

- emergence of this supergroup. *International Journal for Parasitology* **42**:1025–1036
DOI [10.1016/j.ijpara.2012.09.004](https://doi.org/10.1016/j.ijpara.2012.09.004).
- Legendre F, Nel A, Svenson GJ, Robillard T, Pellens R, Grandcolas P. 2015.** Phylogeny of dictyoptera: dating the origin of cockroaches, praying mantises and termites with molecular data and controlled fossil evidence. *PLoS ONE* **10**:e0130127
DOI [10.1371/journal.pone.0130127](https://doi.org/10.1371/journal.pone.0130127).
- Li W, Cowley A, Uludag M, Gur T, McWilliam H, Squizzato S, Park YM, Buso N, Lopez R. 2015.** The EMBL-EBI bioinformatics web and programmatic tools framework. *Nucleic Acids Research* **43**:W580–W584 DOI [10.1093/nar/gkv279](https://doi.org/10.1093/nar/gkv279).
- Lo N, Casiraghi M, Salati E, Bazzocchi C, Bandi C. 2002.** How many *Wolbachia* supergroups exist? *Molecular Biology and Evolution* **19**:341–346
DOI [10.1093/oxfordjournals.molbev.a004087](https://doi.org/10.1093/oxfordjournals.molbev.a004087).
- Martin C, Gavotte L. 2010.** The bacteria *Wolbachia* in filariae, a biological Russian dolls' system: new trends in antifilarial treatments. *Parasite* **17**:79–89
DOI [10.1051/parasite/2010172079](https://doi.org/10.1051/parasite/2010172079).
- Martin D, Rybicki E. 2000.** RDP: detection of recombination amongst aligned sequences. *Bioinformatics* **16**:562–563 DOI [10.1093/bioinformatics/16.6.562](https://doi.org/10.1093/bioinformatics/16.6.562).
- Martin DP, Murrell B, Golden M, Khoosal A, Muhire B. 2015.** RDP4: detection and analysis of recombination patterns in virus genomes. *Virus Evolution* **1**:Article vev003 DOI [10.1093/ve/vev003](https://doi.org/10.1093/ve/vev003).
- McLaren DJ, Worms MJ, Laurence BR, Simpson MG. 1975.** Micro-organisms in filarial larvae (Nematoda). *Transactions of the Royal Society of Tropical Medicine and Hygiene* **69**:509–514 DOI [10.1016/0035-9203\(75\)90110-8](https://doi.org/10.1016/0035-9203(75)90110-8).
- McNulty S, Foster J, Mitreva M, Dunning Hotopp J, Martin J, Fischer K, Wu B, Davis P, Kumar S, Brattig N, Slatko B, Weil G, Fischer P. 2010.** Endosymbiont DNA in endobacteria-free filarial nematodes indicates ancient horizontal genetic transfer. *PLoS ONE* **5**:e11029 DOI [10.1371/journal.pone.0011029](https://doi.org/10.1371/journal.pone.0011029).
- Misof B, Liu S, Meusemann K, Peters RS, Donath A, Mayer C, Frandsen PB, Ware J, Flouri T, Beutel RG, Niehuis O, Petersen M, Izquierdo-Carrasco F, Wappler T, Rust J, Aberer AJ, Aspöck U, Aspöck H, Bartel D, Blanke A, Berger S, Böhm A, Buckley TR, Calcott B, Chen J, Friedrich F, Fukui M, Fujita M, Greve C, Grobe P, Gu S, Huang Y, Jermiin LS, Kawahara AY, Krogmann L, Kubiak M, Lanfear R, Letsch H, Li Y, Li Z, Li J, Lu H, Machida R, Mashimo Y, Kapli P, McKenna DD, Meng G, Nakagaki Y, Navarrete-Heredia JL, Ott M, Ou Y, Pass G, Podsiadlowski L, Pohl H, Von Reumont BM, Schütte K, Sekiya K, Shimizu S, Slipinski A, Stamatakis A, Song W, Su X, Szucsich NU, Tan M, Tan X, Tang M, Tang J, Timelthaler G, Tomizuka S, Trautwein M, Tong X, Uchifune T, Walz MG, Wiegmann BM, Wilbrandt J, Wipfler B, Wong TK, Wu Q, Wu G, Xie Y, Yang S, Yang Q, Yeates DK, Yoshizawa K, Zhang Q, Zhang R, Zhang W, Zhang Y, Zhao J, Zhou C, Zhou L, Ziesmann T, Zou S, Xu X, Yang H, Wang J, Kjer KM, Zhou X. 2014.** Phylogenomics resolves the timing and pattern of insect evolution. *Science* **346**:763–767
DOI [10.1126/science.1257570](https://doi.org/10.1126/science.1257570).

- Nikoh N, Hosokawa T, Moriyama M, Oshima K, Hattori M, Fukatsu T. 2014.** Evolutionary origin of insect-Wolbachia nutritional mutualism. *Proceedings of the National Academy of Sciences of the United States of America* **111**:10257–10262 DOI [10.1073/pnas.1409284111](https://doi.org/10.1073/pnas.1409284111).
- O'Neill SL, Giordano R, Colbert AM, Karr TL, Robertson HM. 1992.** 16S rRNA phylogenetic analysis of the bacterial endosymbionts associated with cytoplasmic incompatibility in insects. *Proceedings of the National Academy of Sciences of the United States of America* **89**:2699–2702 DOI [10.1073/pnas.89.7.2699](https://doi.org/10.1073/pnas.89.7.2699).
- Padidam M, Sawyer S, Fauquet CM. 1999.** Possible emergence of new geminiviruses by frequent recombination. *Virology* **265**:218–225 DOI [10.1006/viro.1999.0056](https://doi.org/10.1006/viro.1999.0056).
- Posada D, Crandall KA. 2001.** Evaluation of methods for detecting recombination from DNA sequences: computer simulations. *Proceedings of the National Academy of Sciences of the United States of America* **98**:13757–13762 DOI [10.1073/pnas.241370698](https://doi.org/10.1073/pnas.241370698).
- R Core Team. 2013.** *R: a language and environment for statistical computing*. R Foundation for Statistical Computing.
- Ramirez-Puebla ST, Servin-Garciduenas LE, Ormeno-Orrillo E, Vera-Ponce de Leon A, Rosenblueth M, Delaye L, Martinez J, Martinez-Romero E. 2015.** Species in *Wolbachia*? Proposal for the designation of ‘*Candidatus Wolbachia bourtzisii*’, ‘*Candidatus Wolbachia onchocercicola*’, ‘*Candidatus Wolbachia blaxteri*’, ‘*Candidatus Wolbachia brugii*’, ‘*Candidatus Wolbachia taylori*’, ‘*Candidatus Wolbachia collem-bolicola*’ and ‘*Candidatus Wolbachia multihospitum*’ for the different species within *Wolbachia* supergroups. *Systematic and Applied Microbiology* **38**:390–399 DOI [10.1016/j.syapm.2015.05.005](https://doi.org/10.1016/j.syapm.2015.05.005).
- Rokas II. 2000.** *Wolbachia* as a speciation agent. *Trends in Ecology & Evolution* **15**:44–45 DOI [10.1016/S0169-5347\(99\)01783-8](https://doi.org/10.1016/S0169-5347(99)01783-8).
- Ronquist F, Huelsenbeck JP. 2003.** MrBayes 3: Bayesian phylogenetic inference under mixed models. *Bioinformatics* **19**:1572–1574 DOI [10.1093/bioinformatics/btg180](https://doi.org/10.1093/bioinformatics/btg180).
- Ros VI, Fleming VM, Feil EJ, Breeuwer JA. 2009.** How diverse is the genus *Wolbachia*? Multiple-gene sequencing reveals a putatively new *Wolbachia* supergroup recovered from spider mites (Acari: Tetranychidae). *Applied and Environmental Microbiology* **75**:1036–1043 DOI [10.1128/AEM.01109-08](https://doi.org/10.1128/AEM.01109-08).
- Rowley SM, Raven RJ, McGraw EA. 2004.** *Wolbachia pipientis* in Australian spiders. *Current Microbiology* **49**:208–214 DOI [10.1007/s00284-004-4346-z](https://doi.org/10.1007/s00284-004-4346-z).
- Salminen MO, Carr JK, Burke DS, McCutchan FE. 1995.** Identification of breakpoints in intergenotypic recombinants of HIV type 1 by bootscanning. *AIDS Research and Human Retroviruses* **11**:1423–1425 DOI [10.1089/aid.1995.11.1423](https://doi.org/10.1089/aid.1995.11.1423).
- Sironi M, Bandi C, Sacchi L, Di Sacco B, Damiani G, Genchi C. 1995.** Molecular evidence for a close relative of the arthropod endosymbiont *Wolbachia* in a filarial worm. *Molecular and Biochemical Parasitology* **74**:223–227 DOI [10.1016/0166-6851\(95\)02494-8](https://doi.org/10.1016/0166-6851(95)02494-8).
- Smith MF. 1992.** Analyzing the mosaic structure of genes. *Journal of Molecular Evolution* **34**:126–129.

- Sokal RR, Rohlf FJ. 1981.** *Biometry. The principles and practice of statistics in biological research.* San Francisco: W.H. Freeman & Co.
- Stamatakis A. 2014.** RAxML version 8: a tool for phylogenetic analysis and post-analysis of large phylogenies. *Bioinformatics* **30**:1312–1313
DOI [10.1093/bioinformatics/btu033](https://doi.org/10.1093/bioinformatics/btu033).
- Taylor MJ, Bandi C, Hoerauf AM, Lazdins J. 2000.** *Wolbachia* bacteria of filarial nematodes: a target for control? *Parasitology Today* **16**:179–180
DOI [10.1016/S0169-4758\(00\)01661-6](https://doi.org/10.1016/S0169-4758(00)01661-6).
- Taylor MJ, Hoerauf A. 1999.** *Wolbachia* bacteria of filarial nematodes. *Parasitology Today* **15**:437–442 DOI [10.1016/S0169-4758\(99\)01533-1](https://doi.org/10.1016/S0169-4758(99)01533-1).
- Taylor MJ, Voronin D, Johnston KL, Ford L. 2012.** *Wolbachia* filarial interactions. *Cellular Microbiology* **15**:520–526 DOI [10.1111/cmi.12084](https://doi.org/10.1111/cmi.12084).
- Telschow A, Flor M, Kobayashi Y, Hammerstein P, Werren JH. 2007.** *Wolbachia*-induced unidirectional cytoplasmic incompatibility and speciation: mainland-island model. *PLoS ONE* **2**:e701 DOI [10.1371/journal.pone.0000701](https://doi.org/10.1371/journal.pone.0000701).
- Tong KJ, Duchene S, Ho SY, Lo N. 2015.** Comment on “Phylogenomics resolves the timing and pattern of insect evolution”. *Science* **349**:Article 487
DOI [10.1126/science.aaa5460](https://doi.org/10.1126/science.aaa5460).
- Unver A, Rikihisa Y, Kawahara M, Yamamoto S. 2003.** Analysis of 16S rRNA gene sequences of *Ehrlichia canis*, *Anaplasma platys*, and *Wolbachia* species from canine blood in Japan. *Annals of the New York Academy of Sciences* **990**:692–698
DOI [10.1111/j.1749-6632.2003.tb07445.x](https://doi.org/10.1111/j.1749-6632.2003.tb07445.x).
- Vandekerckhove TT, Watteyne S, Willems A, Swings JG, Mertens J, Gillis M. 1999.** Phylogenetic analysis of the 16S rDNA of the cytoplasmic bacterium *Wolbachia* from the novel host *Folsomia candida* (Hexapoda, Collembola) and its implications for wolbachial taxonomy. *FEMS Microbiology Letters* **180**:279–286
DOI [10.1111/j.1574-6968.1999.tb08807.x](https://doi.org/10.1111/j.1574-6968.1999.tb08807.x).
- Vavre F, Fleury F, Lepetit D, Fouillet P, Bouletreau M. 1999.** Phylogenetic evidence for horizontal transmission of *Wolbachia* in host-parasitoid associations. *Molecular Biology and Evolution* **16**:1711–1723 DOI [10.1093/oxfordjournals.molbev.a026084](https://doi.org/10.1093/oxfordjournals.molbev.a026084).
- Wang Z, Su XM, Wen J, Jiang LY, Qiao GX. 2014.** Widespread infection and diverse infection patterns of *Wolbachia* in Chinese aphids. *Insect Science* **21**:313–325
DOI [10.1111/1744-7917.12102](https://doi.org/10.1111/1744-7917.12102).
- Werren JH, Baldo L, Clark ME. 2008.** *Wolbachia*: master manipulators of invertebrate biology. *Nature Reviews Microbiology* **6**:741–751 DOI [10.1038/nrmicro1969](https://doi.org/10.1038/nrmicro1969).
- Werren JH, Zhang W, Guo LR. 1995.** Evolution and phylogeny of *Wolbachia*: reproductive parasites of arthropods. *Proceedings of the Royal Society B: Biological Sciences* **261**:55–63 DOI [10.1098/rspb.1995.0117](https://doi.org/10.1098/rspb.1995.0117).
- Wiegmann BM, Trautwein MD, Winkler IS, Barr NB, Kim JW, Lambkin C, Bertone MA, Cassel BK, Bayless KM, Heimberg AM, Wheeler BM, Peterson KJ, Pape T, Sinclair BJ, Skevington JH, Blagoderov V, Caravas J, Kutty SN, Schmidt-Ott U, Kampmeier GE, Thompson FC, Grimaldi DA, Beckenbach AT, Courtney GW, Friedrich M, Meier R, Yeates DK. 2011.** Episodic radiations in the fly tree of life.

Proceedings of the National Academy of Sciences of the United States of America
108:5690–5695 DOI [10.1073/pnas.1012675108](https://doi.org/10.1073/pnas.1012675108).

Xia X, Xie Z. 2001. DAMBE: software package for data analysis in molecular biology and evolution. *Journal of Heredity* **92**:371–373 DOI [10.1093/jhered/92.4.371](https://doi.org/10.1093/jhered/92.4.371).

Xia X, Xie Z, Salemi M, Chen L, Wang Y. 2003. An index of substitution saturation and its application. *Molecular Phylogenetics and Evolution* **26**:1–7 DOI [10.1016/S1055-7903\(02\)00326-3](https://doi.org/10.1016/S1055-7903(02)00326-3).

Zug R, Hammerstein P. 2012. Still a host of hosts for *Wolbachia*: analysis of recent data suggests that 40% of terrestrial arthropod species are infected. *PLoS ONE* **7**:e38544 DOI [10.1371/journal.pone.0038544](https://doi.org/10.1371/journal.pone.0038544).

Zug R, Hammerstein P. 2015. Bad guys turned nice? A critical assessment of *Wolbachia* mutualisms in arthropod hosts. *Biological Reviews of the Cambridge Philosophical Society* **90**:89–111 DOI [10.1111/brv.12098](https://doi.org/10.1111/brv.12098).