



**HAL**  
open science

## Specific antibodies to Anopheles gSG6-P1 salivary peptide to assess early childhood exposure to malaria vector bites

Papa Drame, Anne Poinsignon, Célia Dechavanne, Gilles Cottrell, Manon Farce, Rodolphe Ladekpo, Achille Massougbodji, Sylvie Cornélie, David Courtin, Florence Migot-Nabias, et al.

### ► To cite this version:

Papa Drame, Anne Poinsignon, Célia Dechavanne, Gilles Cottrell, Manon Farce, et al.. Specific antibodies to Anopheles gSG6-P1 salivary peptide to assess early childhood exposure to malaria vector bites. *Malaria Journal*, 2015, 14, pp.285. 10.1186/s12936-015-0800-6 . hal-02991240

**HAL Id: hal-02991240**

**<https://hal.umontpellier.fr/hal-02991240>**

Submitted on 28 May 2021

**HAL** is a multi-disciplinary open access archive for the deposit and dissemination of scientific research documents, whether they are published or not. The documents may come from teaching and research institutions in France or abroad, or from public or private research centers.

L'archive ouverte pluridisciplinaire **HAL**, est destinée au dépôt et à la diffusion de documents scientifiques de niveau recherche, publiés ou non, émanant des établissements d'enseignement et de recherche français ou étrangers, des laboratoires publics ou privés.



Distributed under a Creative Commons Attribution 4.0 International License

RESEARCH

Open Access



# Specific antibodies to *Anopheles* gSG6-P1 salivary peptide to assess early childhood exposure to malaria vector bites

Papa M Drame<sup>1,2,8\*</sup>, Anne Poinsignon<sup>1</sup>, Célia Dechavanne<sup>3,4</sup>, Gilles Cottrell<sup>3,5</sup>, Manon Farce<sup>1</sup>, Rodolphe Ladekpo<sup>6</sup>, Achille Massougbojji<sup>6,7</sup>, Sylvie Cornélie<sup>1</sup>, David Courtin<sup>3,4,6</sup>, Florence Migot-Nabias<sup>3,4</sup>, André Garcia<sup>3,4</sup> and Franck Remoué<sup>1,2</sup>

## Abstract

**Background:** The estimates of risk of malaria in early childhood are imprecise given the current entomologic and parasitological tools. Thus, the utility of anti-*Anopheles* salivary gSG6-P1 peptide antibody responses in measuring exposure to *Anopheles* bites during early infancy has been assessed.

**Methods:** Anti-gSG6-P1 IgG and IgM levels were evaluated in 133 infants (in Benin) at three (M3), six (M6), nine (M9) and 12 (M12) months of age. Specific IgG levels were also assessed in their respective umbilical cord blood (IUCB) and maternal blood (MPB).

**Results:** At M3, 93.98 and 41.35% of infants had anti-gSG6-P1 IgG and IgM Ab, respectively. Specific median IgG and IgM levels gradually increased between M3 and M6 ( $p < 0.0001$  and  $p < 0.001$ ), M6–M9 ( $p < 0.0001$  and  $p = 0.085$ ) and M9–M12 ( $p = 0.002$  and  $p = 0.03$ ). These levels were positively associated with the *Plasmodium falciparum* infection intensity ( $p = 0.006$  and  $0.003$ ), and inversely with the use of insecticide-treated bed nets ( $p = 0.003$  and  $0.3$ ). Levels of specific IgG in the MPB were positively correlated to those in the IUCB ( $R = 0.73$ ;  $p < 0.0001$ ) and those at M3 ( $R = 0.34$ ;  $p < 0.0001$ ).

**Conclusion:** The exposure level to *Anopheles* bites, and then the risk of malaria infection, can be evaluated in young infants by assessing anti-gSG6-P1 IgM and IgG responses before and after 6-months of age, respectively. This tool can be useful in epidemiological evaluation and surveillance of malaria risk during the first year of life.

**Keywords:** Malaria, Salivary proteins, Biomarker of exposure, *Anopheles* bites, Maternal IgG transfer, Infants, Africa

## Background

In the absence of effective vaccines, malaria control and prevention strategies are primarily based on the widespread use of effective drugs and vector control by insecticide-treated bed nets (ITNs) and indoor residual sprays [1–3]. Such interventions are associated with recent decline in malaria burden across a range of settings [4–6]. However, malaria incidence and risk are static or increasing in several African countries, including the Republic of

Benin, where the disease is still the first leading cause of child morbidity and mortality [7].

Naïve newborns are at increased risk of malaria infection during the first year of life in endemic areas [8–10]. Newborn exposure to malaria has traditionally been assessed using entomological and parasitological methods. However, these methods are labour-intensive and difficult to sustain especially in low transmission or exposure contexts [11, 12]. In addition, these methods are typically used at the community level measure and do not target the individual [13]. Moreover, these methods typically exclude infants or newborns because of numerous ethical concerns [14, 15]. Evaluating the risk of malaria

\*Correspondence: [papa.drame@nih.gov](mailto:papa.drame@nih.gov)

<sup>8</sup> Present Address: Laboratory of Parasitic Diseases, NIAID, NIH, 4 Center Dr, Bethesda, MD 20892-0425, USA

Full list of author information is available at the end of the article

in vulnerable infants is not only challenging but also requires new tools [16, 17].

Improving an understanding of human-*Anopheles* interactions can potentially provide a promising alternative [18, 19]. *Plasmodium* spp. are transmitted to humans by the saliva of infected-female *Anopheles* mosquitoes during a blood meal. Injected mosquito salivary molecules facilitate the mosquito blood-feeding activity both by counteracting the human haemostatic and inflammatory reactions and by modulating its innate and adaptive immune responses [20, 21]. Following mosquito infecting as well as not-infecting bites, humans produce immunoglobulin G (IgG), M (IgM), and/or E (IgE) specific to injected mosquito salivary proteins [22–24]. Such humoral responses may be a marker of human exposure to vector bites and pathogens associated with mosquito-borne diseases [25–30].

A specific and highly conserved *Anopheles gambiae* salivary gland protein-6 peptide 1 (gSG6-P1) antigen has been validated as a biomarker of *Anopheles* bites [13]. The anti-gSG6-P1 IgG response has been associated with local exposure level to *An. gambiae s.l.* and *Anopheles funestus s.s.* bites in zones with various transmission intensities [22, 31–33]. Moreover, anti-gSG6-P1 IgG responses have been shown to reflect the success of ITN-based [31, 34] and other [34] malaria vector control methods in that they diminish quite rapidly when exposure level drops [31]. However, this tool has not yet been tested in vulnerable young infants (<1-year old), therefore limiting its field application to malaria epidemiological studies or surveys.

The present study aimed to evaluate and to follow, during the first months of life, the acquisition level of human IgM and IgG responses to gSG6-P1 in southern Benin. Associations between specific gSG6-P1 IgG and IgM responses and parasitological and entomological parameters were evaluated. Whether mothers provide their infant with specific IgG through fetal-maternal transfer was also investigated.

## Methods

### Study area

The study was conducted in the district of Tori Bossito, a rural area located on the coastal plain of south Benin, 40 km northwest of Cotonou (the economic capital city). It is a sub-tropical area with an annual average rainfall of 1,100 mm. There are two rainy seasons: April–July and October–November. The distribution of rainfalls, maximal during the two rainy seasons, was heterogeneous over the area. Average temperatures monthly varied between 27 and 31°C. *Anopheles gambiae s.s.* and *An. funestus*, the most abundant anopheline species, are the major vectors for the transmission of *Plasmodium*

*falciparum*, the major human malaria parasite in this region [35, 36]. A recent study has described an average annual *P. falciparum* entomological inoculation rate of 15.5, with important time and space variations depending on villages [37]. *Anopheles nili*, *Anopheles pharoensis* and *Anopheles lesoni*, also locally present, are not yet associated with malaria transmission [36].

### Study design, population and sampling

The study included nine villages (Avame Centre, Gbedjougou, Houngo, Anavie, Dohinoko, Gbetaga, Tori Cada Centre, Zebe, and Zoungoudo) distributed within three maternity hospitals (MHs: Avame, Cada and Gare) providing birth attendance and primary health care. Women who attended the maternity hospitals for antenatal care were asked to enter into the study and were recruited from anytime after the 7th month of pregnancy. Inclusion criteria were to: (1) live in one of the nine villages; (2) have no intention to move within the next 12 months; and, (3) plan to deliver at the maternity hospital. At delivery, maternal peripheral (MPB) and infant umbilical cord (IUCB) blood spots were collected on filter papers (Whatman No 1, Saint-Louis, MO, USA). After delivery, newborns were actively followed monthly over the subsequent 12 months. Capillary blood on filter paper and venous blood for smears (thick blood smears) were collected every 3 months (M3, M6, M9, and M12) for each live newborn to study the kinetics of antibody responses to gSG6-P1 peptide and to determine the presence and/or intensity of *P. falciparum* infections. Parasite density (parasitaemia) was calculated as the number of *P. falciparum* (99% of identified *Plasmodium*) parasites per microlitre of blood; mean parasitaemia values ( $x + 1$ ) were calculated. Mothers were asked to fill out questionnaires, including the use of ITNs and any clinical sign of the malaria for themselves and their babies. A birth cohort was then set up in July 2007 and recruitment performed until July 2008 as previously described [37].

The IRD Consultative Committee on Professional Conduct and Ethics (5 May, 2008) and the Ethical Committee of the Faculté des Sciences de la Santé of the University of Abomey-Calavi in Benin approved the study. All necessary permits were obtained for the described field studies. Informed written consent in French and Fon (major spoken language in the studied region) was obtained from the mothers.

Immunoassays were performed for 133 infants who completed a cord blood and the all four three-monthly blood spot samplings during the first 12 months of life follow-up.

### Prediction of spatiotemporal risk of malaria transmission

Entomological data (by human landing catch of mosquitoes) were collected every 6 weeks on three successive

nights from July 2007 to July 2008 at four catch houses (four indoors and four outdoors) in each village, as previously described [38]. A statistical model predicting the spatiotemporal transmission of malaria at the household level in all nine villages was then developed based on correlation results between *Anopheles* density and climatic/environmental factors [38], allowing comparisons between the individual risk of malaria transmission data from that model to anti-gSG6-P1 IgG and IgM Ab levels.

#### Salivary peptide gSG6-P1

The gSG6-P1 peptide was designed using bioinformatics to maximize its *Anopheles* specificity, synthesized and purified by Genepex SA (Saint Jean de Vedas, Hérault, France). It was used for immunological tests (ELISA) as previously described [13, 32].

#### Human IgG and IgM assays by indirect ELISA

Standardized dried blood spots were eluted as previously described [28]. ELISAs were carried out on blood spot eluates to assay IgG and IgM responses to gSG6-P1. Briefly, Maxisorp plates (Nunc, Roskilde, Denmark) were coated with gSG6-P1 antigen (20 µg/mL) in PBS. Plates were blocked using 300 µL of Protein-Free Blocking-Buffer (Pierce, Thermo Scientific, France) for 45 min at 37°C. Eluates were diluted 1/40 (IgG) or 1/20 (IgM) in PBS-Tween-1% and incubated in duplicate at 4°C overnight. Monoclonal mouse biotinylated Ab against human IgG or IgM (BD Pharmingen, San Diego, CA, USA) were incubated at 1/2,000 (IgG) or 1/500 (IgM) dilution. Peroxidase-conjugated streptavidin (Amersham, Les Ulis, France) was then added (1/2,000 for IgG and 1/500 for IgM). Colorimetric development was carried out using ABTS (2,2'-azino-bis (3-ethylbenzothiazoline-6-sulfonic acid) diammonium; Sigma, St Louis, MO, USA) in 50 mM citrate buffer (pH 4) containing 0.003% H<sub>2</sub>O<sub>2</sub>. The optical density (OD) was measured at 405 nm. In parallel, each test sample was assessed in a blank well containing no gSG6-P1 antigen (OD<sub>n</sub>). Results were expressed as the ΔOD value: ΔOD = OD<sub>x</sub> - OD<sub>n</sub>, where OD<sub>x</sub> represents the mean of individual OD in both antigen wells. Anti-gSG6-P1 IgG and IgM levels were also assessed in 14 non-*Anopheles* exposed individuals (negative controls) from northern France to calculate the immune response threshold (TR). The TR was calculated by the following formula: TR = mean (ΔOD<sub>neg</sub>) + 3SD = for IgG for IgM. In the present study an IgG responder had a ΔOD<sub>IgG</sub> > 0.204 and an IgM responder had a ΔOD<sub>IgM</sub> > 0.288.

#### Statistical analysis

Data were analysed using R (version 2.14.1), and graphs were constructed with GraphPad Prism5<sup>®</sup> software (San Diego, CA, USA). A simple linear mixed effect (LME)

regression model was constructed to determine the correlation between anti-gSG6-P1 IgG or IgM response and each of potential epidemiological, biological and environmental factors, such as age (M3, M6, M9, and M12), gender (male vs female), the season of sampling (end dry season: February to April; beginning rainy season: May to July; end rainy season: August to October; beginning dry season: November to January), *P. falciparum* prevalence (yes/no), *P. falciparum* infection intensity (continuous variable), bed net use (yes/no), and environmental risk of exposure (continuous variable). Then, a multivariate LME analysis was performed by including all explanatory variables that have shown significant (or close) *p* value in the univariate (simple) model. In this multivariate model, two random intercepts at individual and village levels were introduced, correcting then biological inter-individual and inter-village variations. Two or more percentages of immune responders were compared using the Fisher's exact-test. Spearman rank correlations were used to estimate the force of the association between specific IgG in the MPB, IUCB and M3-infants' peripheral (M3) bloods.

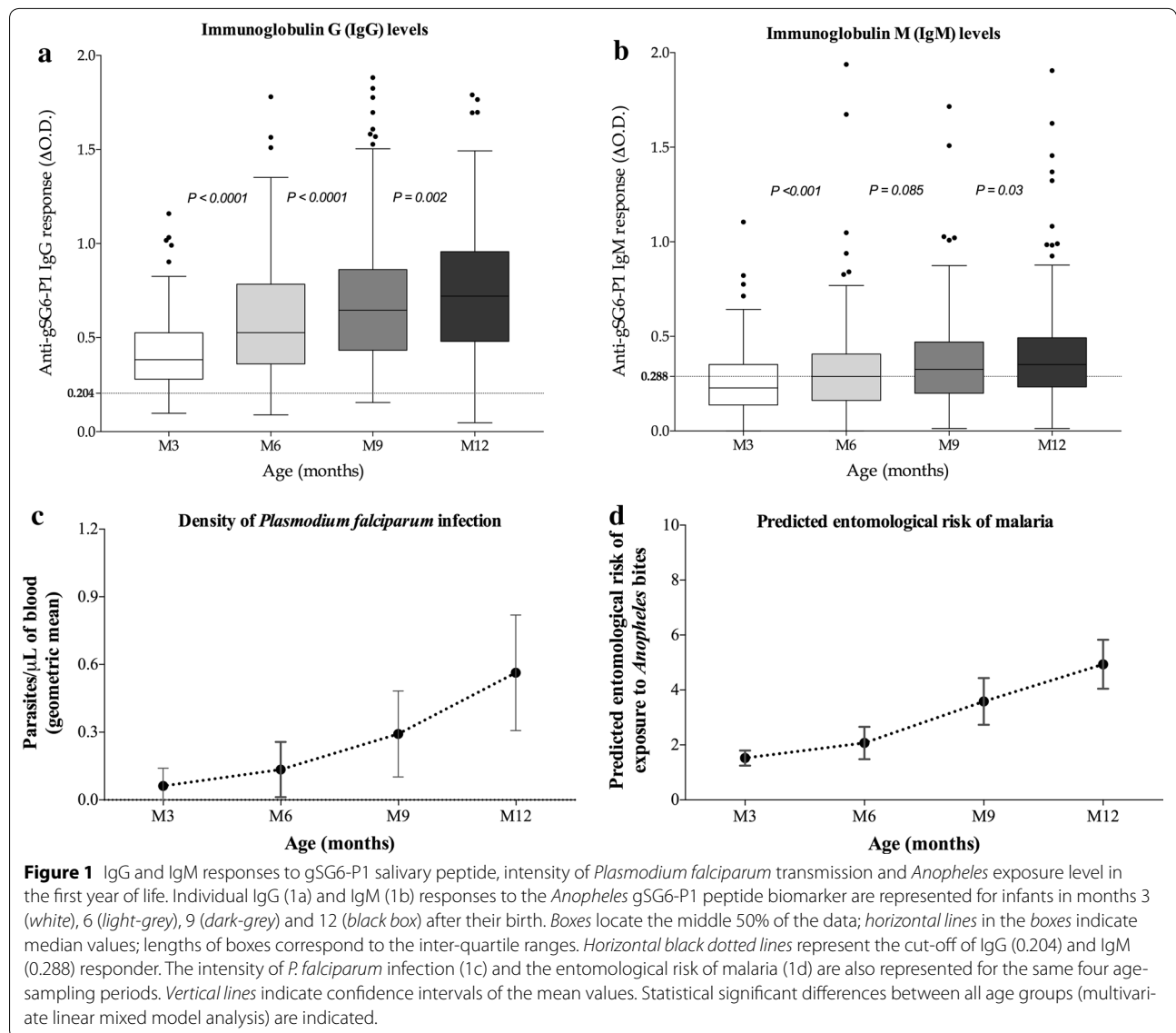
## Results

### Evolution of specific IgG and IgM levels during the first year of life

At month 3 (M3), levels of specific gSG6-P1 IgG (Figure 1a) and IgM (Figure 1b) in the peripheral blood of infants were low [median IgG level (M<sub>IgG</sub>) = 0.383 and median IgM level (M<sub>IgM</sub>) = 0.228]. Importantly, these levels of IgG and IgM gradually increased from M3 to M12 (M<sub>IgG</sub> = 0.721 and M<sub>IgM</sub> = 0.352), with intermediate values at M6 (M<sub>IgG</sub> = 0.527 and M<sub>IgM</sub> = 0.288) and M9 (M<sub>IgG</sub> = 0.646 and M<sub>IgM</sub> = 0.326). The increase of specific IgG levels (Figure 1a) was significant between two successive sampled age periods: M3–M6 (*p* < 0.0001), M6–M9 (*p* < 0.0001) and M9–M12 (*p* = 0.002). Similarly, specific IgM levels (Figure 1b) significantly increased only between M3 and M6 (*p* < 0.001) and M9–M12 (*p* = 0.03). No significant increase in specific IgM levels was noted between M6 and M9 (*p* = 0.085).

Interestingly, as observed for anti-gSG6-P1 IgG and IgM, the intensity of *P. falciparum* infection in infants (Figure 1c) and the predicted entomological risk of infant exposure to *Anopheles* bites (Figure 1d) were also low at M3 and increased from M3 to M12. However, the difference in the intensity of *P. falciparum* infection and the predicted entomological risk of exposure between any two consecutive age periods (M3–M6, M6–M9 and M9–M12) were not significant, unlike that observed for anti-gSG6-P1 Ab levels.

The percentages of IgG and IgM responders were calculated for the four time-sampling dates (Table 1). Results show that by M3, 94% of the infants were IgG



**Table 1 Percentages of IgG and IgM responders according to age and the place of birth/residence**

Variables	Groups	Individual Ab responders to gSG6-P1 peptide	
		Percentage (%) of IgG responders	Percentage (%) of IgM responders
Age	M3	93.98 (125/133)	41.35 (55/133)
	M6	97.74 (130/133)	50.37 (67/133)
	M9	98.96 (131/133)	56.39 (75/133)
	M12	98.96 (131/133)	65.41 (87/133)
Maternity hospitals	Avame	97.87 (230/235)	17.02 (40/235)
	Gare	93.11 (108/116)	89.65 (104/116)
	Cada	98.37 (181/184)	76.63 (141/184)

The place of birth/residence was studied by combining infants of all ages (n = 532).

responders, and this increased to 98% by M6 and to 99% by M9–M12. The percentage of IgM responders was lower at M3 (41%), and gradually increased to 65% by M12 with values of 50% at M6 and 56% at M9.

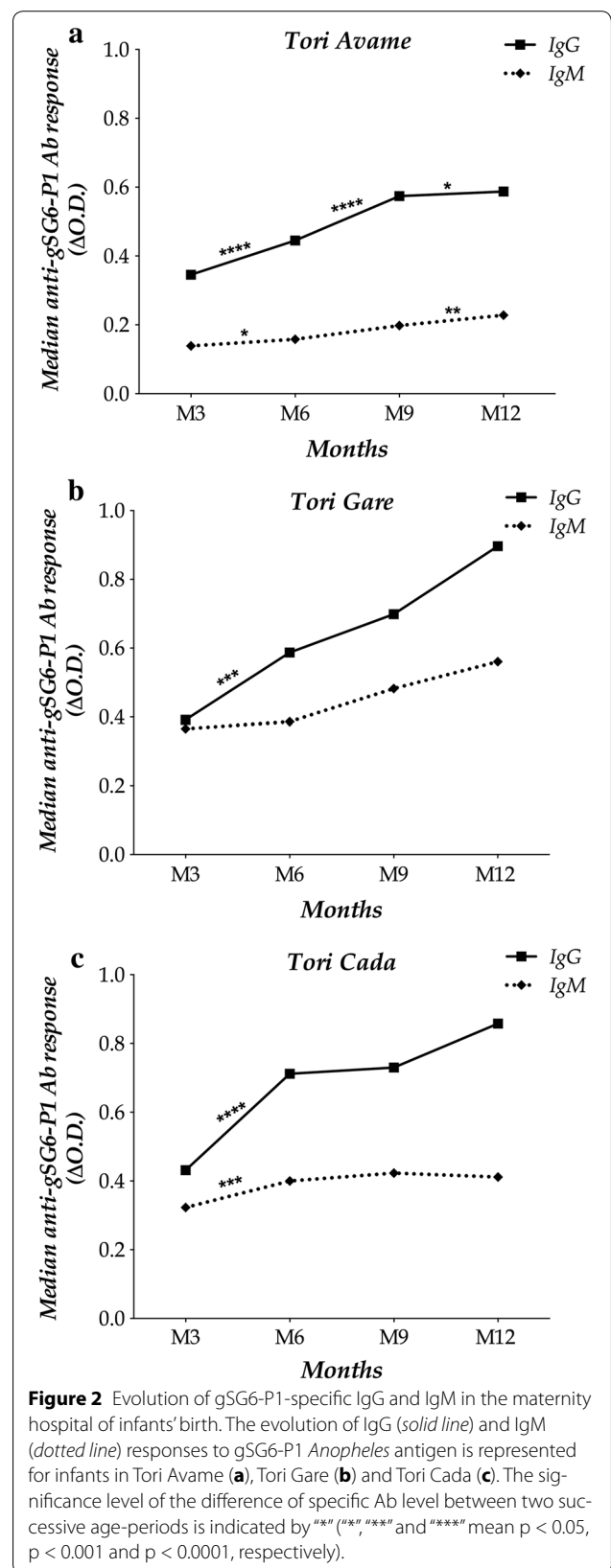
**Specific gSG6-IgG levels according to maternity hospital of delivery**

Assuming that each pregnant woman delivered her baby at the closest maternity hospital, Immunological data were analysed based on the hospital of delivery. Avame, Gare and Cada received pregnant women from three (Avame centre, Gbedjougo and Houndjo), two (Dohinoko and Gbetaga) and four villages (Anavie, Cada, Zebe and Zoungoudo), respectively. The M3 levels of IgG and IgM (Figure 2) and the percentage of IgM responders at M3 (Table 1) were lower in Avame compared to Gare ( $p = 0.0013$ ,  $p < 0.0001$  and  $p < 0.0001$ , respectively) or to Cada ( $p < 0.0001$  for all three), although the percentage of IgG responders (Table 1) was not significantly different among the three locations of birth. Median IgG levels did not differ between Gare and Cada ( $p = 0.47$ ), in contrast to the median IgM levels, which were higher in Gare ( $p = 0.0008$ ).

The profile of median of specific Ab levels during the first life year was similar in the three MHs: a gradual increase from M3 to M12 (Figure 2). However, some differences between two successive age-sampling periods were observed. In detail, in Avame (Figure 2a) where anti-gSG6-P1 Ab responses were lower, IgG levels increased significantly between M3 and M6 ( $p < 0.0001$ ), M6–M9 ( $p < 0.0001$ ), M9–M12 ( $p < 0.05$ ), and IgM levels between M3 and M6 ( $p < 0.05$ ), M9–M12 ( $p < 0.01$ ). However, IgG and IgM levels significantly increased only between M3 and M6 in Gare ( $p < 0.001$  for IgG; Figure 2b) and in Cada ( $p < 0.0001$  and  $p < 0.001$  respectively; Figure 2c).

**Age, intensity of *Plasmodium falciparum* infection, use of vector control and exposure to *Anopheles* bites: main factors of variation of anti-gSG6-P1 IgG and IgM levels**

Independent of location and individual cofactors (random intercepts at individual and village levels), both individual IgG and IgM responses to gSG6-P1 were 20 and 8% higher at M6 (regression coefficient (RE) = 1.20 and  $p < 0.0001$ , RE = 1.08 and  $p = 0.0117$ , respectively), 34 and 12% at M9 (RE = 1.34 and  $p < 0.0001$ , RE = 1.12 and  $p < 0.0001$ , respectively) and 39 and 16% at M12 (RE = 1.39 and  $p < 0.0001$ , RE = 1.16 and  $p < 0.0001$ , respectively) compared to M3 (Table 2). Specific IgG and IgM levels were also positively associated with the density of *P. falciparum* infection (RE = 1.03 and  $p = 0.0065$ , RE = 1.03 and  $p = 0.0037$ , respectively). In contrast,





**Table 2 Linear Mixed-Effects (LME) model to study anti-gSG6-P1 response according to age, gender, seasonality, vector control, location and *Plasmodium falciparum* infection**

	Anti-gSG6-P1 IgG response		Anti-gSG6-P1 IgM response	
	Estimated coefficient (SE)	P-value	Estimated coefficient (SE)	P-value
Fixed effects				
Intercept	0.57 (0.09)	0.0000	0.36 (0.06)	0.0000
Age (months)				
3 (n = 133)	–	–	–	–
6 (n = 133)	0.184 (0.024)	0.0000	0.081 (0.025)	0.0117
9 (n = 133)	0.289 (0.025)	0.0000	0.110 (0.026)	0.0000
12 (n = 133)	0.327 (0.026)	0.0000	0.152 (0.026)	0.0000
Season				
Dry season 1	–	–	–	–
Dry season 2	0.57 (0.09)	0.1445	-0.001 (0.028)	0.9561
Rain season 1	0.57 (0.09)	0.3689	-0.040 (0.044)	0.3590
Rain season 2	0.57 (0.09)	0.7927	-0.029 (0.030)	0.3218
Vector control				
No ITN	–	–	–	–
ITN	-0.075 (0.025)	0.0037	-0.023 (0.027)	0.3904
<i>Plasmodium</i> prevalence				
Not infected	–	–	–	–
Infected	0.016 (0.064)	0.8084	0.089 (0.068)	0.1943
<i>Plasmodium</i> density				
Entomological risk of exposure	-0.003 (0.004)	0.4677	0.009 (0.005)	0.0578
Random effects				
Village level	0.074 (0.045)	–	0.091 (0.086)	–
Individual level	0.241 (0.183)	–	0.157 (0.202)	–

The classes of variables with significant *p* value are highlighted in italic

The intercept is the constant value when all independent variables are zeros (e.g. the value of median Ab response in someone with no risk factors). Random effects of the model were estimated at individual and village levels in the form of standard deviation. The estimated coefficient, its confidence interval and the degree of signification (P-value) are indicated. A positive regression coefficient means that the explanatory variable increases the probability of Ab response to gSG6-P1, while a negative regression coefficient means the contrary.

anti-gSG6-P1 IgG responses significantly decreased with the use of vector control (ITNs) (RE = 0.47 and *p* = 0.0037). Finally, no significant variation of specific gSG6-P1 IgG or IgM levels was observed according to seasonality, the predictive risk of exposure to malaria or the prevalence of infection with *P. falciparum* (Table 2).

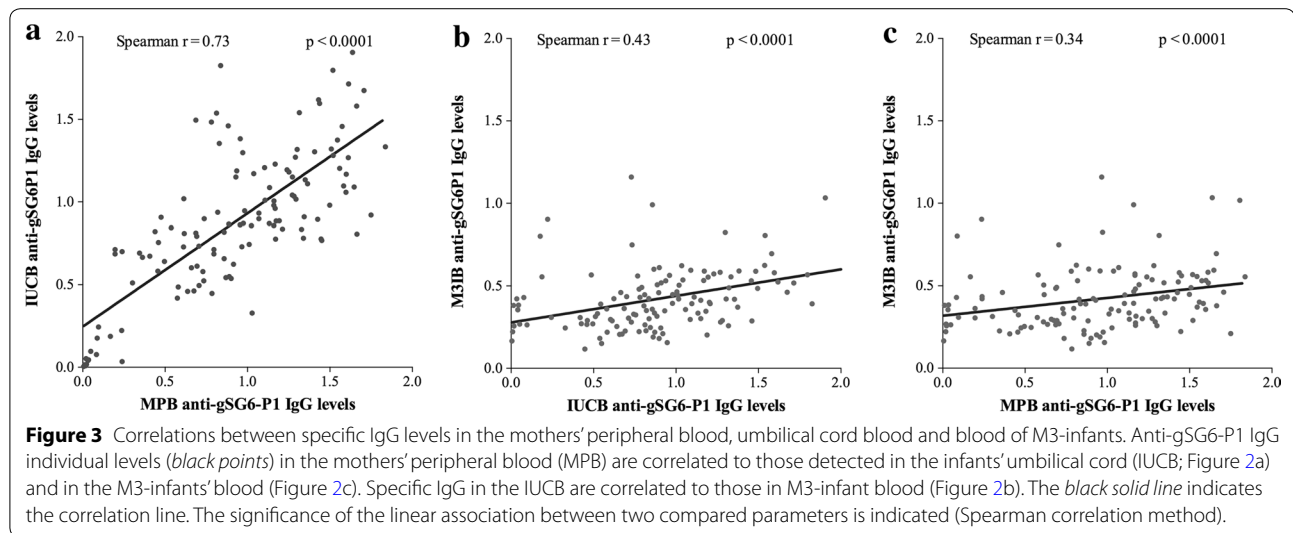
#### Evidence of mother-to-child transmission of anti-gSG6-P1 IgG

As mentioned before, the percentage of specific IgG responders was surprisingly high (93.98%), and considerably higher (*p* < 0.0001) than that of anti-gSG6-P1 IgM responders (41.35%). In addition, a positive association was observed between specific IgG levels in the MPB and the IUCB (Spearman *R* = 0.73; *p* < 0.0001; Figure 3a), in the IUCB and the peripheral blood of M3-infants (*R* = 0.43; *p* < 0.0001; Figure 3b), and in the MPB and the peripheral blood of M3-infants (*R* = 0.34; *p* < 0.0001; Figure 3c). Moreover, a positive association

was observed between specific IgG levels in the MPB and the M3-infant bloods in Avame (Spearman *R* = 0.36; *p* = 0.006) and Cada (*R* = 0.40; *p* = 0.005), and not in Gare (*R* = 0.07; *p* = 0.7).

#### Discussion

This study reports the presence of IgG and IgM Ab specific to gSG6-P1, a salivary biomarker of *Anopheles* bites, in the blood of Beninese infants. A major point is that levels of such IgG and IgM responses gradually increased from three to 12 months of age, in parallel with the intensity of infection with *P. falciparum* and the predicted entomological risk of exposure to *Anopheles* bites. These data extend to infants the utility of such a biomarker and show also that *mother-to-child* transplacental transfer of IgG specific to a salivary protein of a blood-feeding arthropod occurs. This transfer, however, could cause an overestimate of the risk of malaria exposure or transmission during early childhood in a high endemic malaria area.



In the study, anti-gSG6-P1 IgG and IgM Ab were detected in respectively 93.98 and 41.35% of infants at 3 months (M3) of age. *Anopheles* mosquitoes then early bite the majority of infants in these localities of south Benin. However, the pressure of mosquito bites they were exposed to at 3 months was not high, as pointed by the low median values of IgG ( $M = 0.383$ , slightly upper the  $TR_{IgG}$ ) and IgM ( $M = 0.228$ , under the  $TR_{IgM}$ ). These 'low' endogenous M3-levels of plasma specific antibodies were not surprising, in that the newborn immune system is relatively considered as immature during early infancy [39–41]. In endemic malaria areas, young infants are progressively exposed to *Anopheles* bites, their salivary antigens, and eventually the *Plasmodium* spp. they carry [42]. This is suggested by the correlation observed between anti-gSG6-P1 Ab and both the intensity of infection with *P. falciparum* and the entomological risk of infant exposure to *Anopheles* bites [22, 26, 28, 33].

Specific IgG and IgM levels significantly differed based on the location of residence, suggesting spatial differences in human-*Anopheles* contact levels. Infants in the Avame area had lower specific IgG and IgM responses and presumably a lower contact level with *Anopheles* during their first year of life. This can be linked to a likely lower aggressiveness of *Anopheles* in this area, a higher protection level against vectors or different household characteristics (type, well-closed doors and windows) [22, 31–33, 38]. This might explain the slower gradual increase of specific IgG and IgM in Avame compared to Cada and Gare. The role of individual factors (genetic background, nutritional status or nocturnal activities) in that differential gradual acquisition cannot be excluded [37, 43, 44]. All this means that infants were more highly bitten by mosquitoes, acquired more rapidly maturity of

immune system and synthesized more specific antibodies in Gare settings than in Avame and Cada.

Maternal IgG is provided to the infant by transplacental transport [9, 45]. This study describes the evidence of a mother-infant transplacental transfer of anti-gSG6-P1 IgG, contributing to the high percentage of IgG infant responders at 3 months of age (about 94%). Maternal blood concentrations of specific IgG were positively correlated with respective umbilical cord and three-month old infant blood values. In addition, higher specific IgG levels were found in the maternal and cord blood of M3-infants with higher IgG titers, suggesting that the quantity of transferred specific IgG is dependent on the level in the mother that likely reflects the level of maternal exposure to *Anopheles* bites. Despite this positive association, maternal levels of specific IgG transfer could not accurately predict the level of infant specific IgG. In addition, such transfer also depends on the placental integrity, IgG subclass and nature of antigen [9, 46]. Unfortunately, investigating the effects of such factors was not possible in this study.

For a reliable evaluation of the young infant-*Anopheles* contact level by using anti-gSG6-P1 IgG, the proportion contributed from the mother must be considered. The linear regression analysis has estimated about 52 and 21% of the maternal gSG6-P1-specific IgG found in blood of newborns just after delivery and at 3 months of life, respectively, indicating a rapid decline of maternally transferred IgG [47, 48]. It also suggests that maternally transferred IgG are probably cleared in the blood of infants by 6 months of age, suggesting that anti-gSG6-P1 IgG should be more relevant as biomarker of infant exposure to mosquito bites after 6 months of age. Another possibility would be to distinguish maternal and neonatal



specific Ab in infant plasma by mass spectrometry [49], but such technology is unavailable in resource-limited countries. The third approach would be to use IgM Ab that form polymers (usually pentamers) in humans and does not cross the maternal-feta barrier [9, 50]. Interestingly, the M3 proportion of infants presenting IgM against gSG6-P1 peptide (41.35%) was significantly lower than the percentage of those with specific IgG (93.98%). In addition, the highest percentage of IgM responders (89.65%) was obtained in Gare areas, where levels of mother specific IgG were not correlated to levels of IgG of their M3-infants, contrary to Avame and Cada areas. Moreover, no differences in IgM levels or percentage of responders were observed between two successive sampling ages after 6 months of age, in contrast to IgG levels. In infants older than 6 months, specific IgG levels were better at assessing exposure to *Anopheles* bites and the risk of malaria transmission. One hypothesis is that, depending on the level of exposure to mosquito bites, the initial anti-*Anopheles* saliva IgM response may have failed to switch to IgG after several weeks or months as has been shown previously for responses to *P. falciparum* antigens [50, 51]. Nevertheless, the kinetics of IgG (and subclasses) and IgM responses to gSG6-P1 salivary peptide must be elucidated in additional studies.

## Conclusion

In summary, individual exposure levels to *Anopheles* mosquito bites and therefore the risk for malaria transmission in early infancy has been described in a malaria-endemic area of Benin. Moreover, because of transfer of IgG specific to salivary gSG6-P1 *Anopheles* peptide from mother to infant there may be an overestimation of the utility of such a 'biomarker' early in infancy (less than 3 months). To overcome that potential challenge, specific IgM and IgG isotypes may be assayed for in infants younger and older than 6 months, respectively.

## Authors' contributions

FR, AG, DC, AM, and FMN designed the study. PMD, AP, SC, and FR conceived and designed the experiments. RL and CD collected the samples. PMD and MF performed the experiments. PMD analysed the data. PMD and FR wrote the paper. AP, CD, GC, AM, SC, DC, FMN, and AG reviewed the paper. All authors read and approved the final manuscript.

## Author details

<sup>1</sup> UMR MIVEGEC (IRD224-CNRS5290-Universités Montpellier 1 et 2), Institut de Recherche pour le Développement (IRD), BP64501, 34394 Montpellier, France. <sup>2</sup> IRD-UMR MIVEGEC (IRD224-CNRS5290-Universités Montpellier 1 et 2), Centre de Recherche Entomologique de Cotonou (CREC), 01 BP 4414RP, Cotonou, Benin. <sup>3</sup> IRD UMR 216 Mère et enfant face aux infections tropicales, 75006 Paris, France. <sup>4</sup> Faculté de Pharmacie, Université Paris Descartes, Sorbonne Paris Cité, 75006 Paris, France. <sup>5</sup> Laboratoire de Mathématiques Appliquées, Université Paris Descartes, 75006 Paris, France. <sup>6</sup> Centre d'Etudes et de Recherche sur le Paludisme Associé à la Grossesse et à l'Enfant (CERPAGE), Cotonou, Benin. <sup>7</sup> Faculté des Sciences de la Santé, Université d'Abomey-Calavi, 01 BP 188,

Cotonou, Benin. <sup>8</sup> Present Address: Laboratory of Parasitic Diseases, NIAID, NIH, 4 Center Dr, Bethesda, MD 20892-0425, USA.

## Acknowledgements

We thank Thomas B Nutman (NIH) for the language review and re-editing of the manuscript. We thank populations of Tori Bossito, especially women, for their great support and collaboration. We also thank all the field and laboratory staff for their strong commitment to this project. Funding received from the French Ministry of Foreign Affairs and the IRD provided all of the funds for this study.

## Compliance with ethical guidelines

## Competing interests

The authors declare that they have no competing interests.

Received: 22 April 2015 Accepted: 3 July 2015

Published online: 22 July 2015

## References

- Aponte JJ, Schellenberg D, Egan A, Breckenridge A, Carneiro I, Critchley J et al (2009) Efficacy and safety of intermittent preventive treatment with sulfadoxine-pyrimethamine for malaria in African infants: a pooled analysis of six randomised, placebo-controlled trials. *Lancet* 374:1533–1542
- Eastman RT, Fidock DA (2009) Artemisinin-based combination therapies: a vital tool in efforts to eliminate malaria. *Nat Rev Microbiol* 7:864–874
- Lengeler C (2004) Insecticide-treated bed nets and curtains for preventing malaria. *Cochrane Database Syst Rev* CD000363
- Barnes KI, Durrheim DN, Little F, Jackson A, Mehta U, Allen E et al (2005) Effect of artemether-lumefantrine policy and improved vector control on malaria burden in KwaZulu-Natal, South Africa. *PLoS Med* 2:e330
- Cotter C, Sturrock HJ, Hsiang MS, Liu J, Phillips AA, Hwang J et al (2013) The changing epidemiology of malaria elimination: new strategies for new challenges. *Lancet* 382:900–911
- Noor AM, Kinyoki DK, Mundia CW, Kabaria CW, Mutua JW, Alegana VA et al (2014) The changing risk of *Plasmodium falciparum* malaria infection in Africa: 2000–10: a spatial and temporal analysis of transmission intensity. *Lancet* 383:1739–1747
- WHO (2014) World malaria report. World Health Organization, Geneva
- Le Port A, Watier L, Cottrell G, Ouedraogo S, Dechavanne C, Pierrat C et al (2011) Infections in infants during the first 12 months of life: role of placental malaria and environmental factors. *PLoS One* 6:e27516
- Palmeira P, Quinello C, Silveira-Lessa AL, Zago CA, Carneiro-Sampaio M (2012) IgG placental transfer in healthy and pathological pregnancies. *Clin Dev Immunol* 2012:985646
- Le Port A, Cottrell G, Martin-Prevel Y, Migot-Nabias F, Cot M, Garcia A (2012) First malaria infections in a cohort of infants in Benin: biological, environmental and genetic determinants. Description of the study site, population methods and preliminary results. *BMJ Open* 2:e000342
- Beier JC, Killeen GF, Githure JI (1999) Entomologic inoculation rates and *Plasmodium falciparum* malaria prevalence in Africa. *Am J Trop Med Hyg* 61:109–113
- Drakeley CJ, Corran PH, Coleman PG, Tongren JE, McDonald SL, Carneiro I et al (2005) Estimating medium- and long-term trends in malaria transmission by using serological markers of malaria exposure. *Proc Natl Acad Sci USA* 102:5108–5113
- Poinsignon A, Cornelie S, Mestres-Simon M, Lanfrancotti A, Rossignol M, Boulanger D et al (2008) Novel peptide marker corresponding to salivary protein gSG6 potentially identifies exposure to *Anopheles* bites. *PLoS One* 3:e2472
- Govella NJ, Chaki PP, Geissbuhler Y, Kannady K, Okumu F, Charlwood JD et al (2009) A new tent trap for sampling exophagic and endophagic members of the *Anopheles gambiae* complex. *Malar J* 8:157
- Mboera LE (2005) Sampling techniques for adult Afrotropical malaria vectors and their reliability in the estimation of entomological inoculation rate. *Tanzan Health Res Bull* 7:117–124

16. The MalERA Consultative group on Monitoring EaS (2011) A research agenda for malaria eradication: monitoring, evaluation, and surveillance. *PLoS Med* 8:e1000400
17. WHO (2009) Global malaria action plan. World Health Organization, Geneva
18. Ribeiro JM, Francischetti IM (2003) Role of arthropod saliva in blood feeding: sialome and post-sialome perspectives. *Annu Rev Entomol* 48:73–88
19. Fontaine A, Diouf I, Bakkali N, Misse D, Pages F, Fusai T et al (2011) Implication of haematophagous arthropod salivary proteins in host-vector interactions. *Parasit Vectors* 4:187
20. Champagne DE (2004) Antihemostatic strategies of blood-feeding arthropods. *Curr Drug Targets Cardiovasc Haematol Disord* 4:375–396
21. Ribeiro JM (1995) Blood-feeding arthropods: live syringes or invertebrate pharmacologists? *Infect Agents Dis* 4:143–152
22. Drame PM, Machault V, Diallo A, Cornélie S, Poinsignon A, Lalou R et al (2012) IgG responses to the gSG6-P1 salivary peptide for evaluating human exposure to *Anopheles* bites in urban areas of Dakar region, Senegal. *Malar J* 11:72
23. Orlandi-Pradines E, Almeras L, de Denis Senneville L, Barbe S, Remoue F, Villard C et al (2007) Antibody response against saliva antigens of *Anopheles gambiae* and *Aedes aegypti* in travellers in tropical Africa. *Microbes Infect* 9:1454–1462
24. Reunala T, Brummer-Korvenkontio H, Lappalainen P, Rasanen L, Palosuo T (1990) Immunology and treatment of mosquito bites. *Clin Exp Allergy* 20(Suppl 4):19–24
25. King JG, Vernick KD, Hillyer JF (2011) Members of the salivary gland surface protein (SGS) family are major immunogenic components of mosquito saliva. *J Biol Chem* 286:40824–40834
26. Remoue F, Cisse B, Ba F, Sokhna C, Herve JP, Boulanger D et al (2006) Evaluation of the antibody response to *Anopheles* salivary antigens as a potential marker of risk of malaria. *Trans R Soc Trop Med Hyg* 100:363–370
27. Andrade BB, Rocha BC, Reis-Filho A, Camargo LM, Tadei WP, Moreira LA et al (2009) Anti-*Anopheles darlingi* saliva antibodies as marker of *Plasmodium vivax* infection and clinical immunity in the Brazilian Amazon. *Malar J* 8:121
28. Drame PM, Poinsignon A, Besnard P, Le Mire J, Dos-Santos MA, Sow CS et al (2010) Human antibody response to *Anopheles gambiae* saliva: an immuno-epidemiological biomarker to evaluate the efficacy of insecticide-treated nets in malaria vector control. *Am J Trop Med Hyg* 83:115–121
29. Rizzo C, Ronca R, Fiorentino G, Verra F, Mangano V, Poinsignon A et al (2011) Humoral response to the *Anopheles gambiae* salivary protein gSG6: a serological indicator of exposure to Afrotropical malaria vectors. *PLoS One* 6:e17980
30. Waitayakul A, Somsri S, Sattabongkot J, Looareesuwan S, Cui L, Udomsangpetch R (2006) Natural human humoral response to salivary gland proteins of *Anopheles* mosquitoes in Thailand. *Acta Trop* 98:66–73
31. Drame PM, Poinsignon A, Besnard P, Cornélie S, Le Mire J, Toto JC et al (2010) Human antibody responses to the *Anopheles* salivary gSG6-P1 peptide: a novel tool for evaluating the efficacy of ITNs in malaria vector control. *PLoS One* 5:e15596
32. Poinsignon A, Cornélie S, Ba F, Boulanger D, Sow C, Rossignol M et al (2009) Human IgG response to a salivary peptide, gSG6-P1, as a new immuno-epidemiological tool for evaluating low-level exposure to *Anopheles* bites. *Malar J* 8:198
33. Poinsignon A, Samb B, Doucoure S, Drame PM, Sarr JB, Sow C et al (2010) First attempt to validate the gSG6-P1 salivary peptide as an immuno-epidemiological tool for evaluating human exposure to *Anopheles funestus* bites. *Trop Med Int Health* 15:1198–1203
34. Drame PM, Diallo A, Poinsignon A, Boussari O, Dos Santos S, Machault V et al (2013) Evaluation of the effectiveness of malaria vector control measures in urban settings of Dakar by a specific anopheles salivary biomarker. *PLoS One* 8:e66354
35. Damien GB, Djenontin A, Rogier C, Corbel V, Bangana SB, Chandre F et al (2010) Malaria infection and disease in an area with pyrethroid-resistant vectors in southern Benin. *Malar J* 9:380
36. Djenontin A, Bio-Bangana S, Moiroux N, Henry MC, Bousari O, Chabi J et al (2010) Culicidae diversity, malaria transmission and insecticide resistance alleles in malaria vectors in Ouidah-Kpomasse-Tori district from Benin (West Africa): A pre-intervention study. *Parasit Vectors* 3:83
37. Le Port A, Cottrell G, Martin-Prevel Y, Migot-Nabias F, Cot M, Garcia A (2012) First malaria infections in a cohort of infants in Benin: biological, environmental and genetic determinants. Description of the study site, population methods and preliminary results. *BMJ Open* 2:e000342
38. Cottrell G, Kouwaye B, Pierrat C, Le Port A, Bouraima A, Fonton N et al (2012) Modeling the influence of local environmental factors on malaria transmission in Benin and its implications for cohort study. *PLoS One* 7:e28812
39. Ellinger I, Fuchs R (2012) HfCRn-mediated transplacental immunoglobulin G transport: protection of and threat to the human fetus and newborn. *Wien Med Wochenschr* 162:207–213
40. Lisciandro JG, van den Biggelaar AH (2010) Neonatal immune function and inflammatory illnesses in later life: lessons to be learnt from the developing world? *Clin Exp Allergy* 40:1719–1731
41. Martin R, Nauta AJ, Ben Amor K, Knippels LM, Knol J, Garssen J (2010) Early life: gut microbiota and immune development in infancy. *Benef Microbes* 1:367–382
42. Rogier C (2003) Childhood malaria in endemic areas: epidemiology, acquired immunity and control strategies (in French). *Med Trop (Mars)* 63:449–464
43. Carnevale P, Frezil JL, Bosseno MF, Le Pont F, Lancien J (1978) The aggressiveness of *Anopheles gambiae* A in relation to the age and sex of the human subjects (in French). *Bull World Health Organ* 56:147–154
44. Geissbuhler Y, Chaki P, Emidi B, Govella NJ, Shirima R, Mayagaya V et al (2007) Interdependence of domestic malaria prevention measures and mosquito-human interactions in urban Dar es Salaam, Tanzania. *Malar J* 6:126
45. Deloron P, Dubois B, Le Hesran JY, Riche D, Fievet N, Cornet M et al (1997) Isotypic analysis of maternally transmitted *Plasmodium falciparum*-specific antibodies in Cameroon, and relationship with risk of *P. falciparum* infection. *Clin Exp Immunol* 110:212–218
46. Costa-Carvalho BT, Viera HM, Dimantas RB, Arslanian C, Naspitz CK, Sole D et al (1996) Transfer of IgG subclasses across placenta in term and preterm newborns. *Braz J Med Biol Res* 29:201–204
47. Andrade BB, Barral-Netto M (2011) Biomarkers for susceptibility to infection and disease severity in human malaria. *Mem Inst Oswaldo Cruz* 106(Suppl 1):70–78
48. De Serres G, Joly JR, Fauvel M, Meyer F, Masse B, Boulianne N (1997) Passive immunity against measles during the first 8 months of life of infants born to vaccinated mothers or to mothers who sustained measles. *Vaccine* 15:620–623
49. Leuridan E, Hens N, Hutse V, Ieven M, Aerts M, Van Damme P (2010) Early waning of maternal measles antibodies in era of measles elimination: longitudinal study. *BMJ* 340:c1626
50. Dechavanne C, Guillonnet F, Chiappetta G, Sago L, Lévy P, Salnot V et al (2012) Mass spectrometry detection of G3 m and IGHG3 alleles and follow-up of differential mother and neonate IgG3. *PLoS One* 7:e46097
51. Kinyanjui SM, Bull P, Newbold CI, Marsh K (2003) Kinetics of antibody responses to *Plasmodium falciparum*-infected erythrocyte variant surface antigens. *J Infect Dis* 187:667–674

**Submit your next manuscript to BioMed Central and take full advantage of:**

- Convenient online submission
- Thorough peer review
- No space constraints or color figure charges
- Immediate publication on acceptance
- Inclusion in PubMed, CAS, Scopus and Google Scholar
- Research which is freely available for redistribution

Submit your manuscript at  
www.biomedcentral.com/submit

