



HAL
open science

Fixing our global agricultural system to prevent the next COVID-19

Frédéric Baudron, Florian Liegeois

► **To cite this version:**

Frédéric Baudron, Florian Liegeois. Fixing our global agricultural system to prevent the next COVID-19. *Outlook On Agriculture*, 2020, 49 (2), pp.111-118. 10.1177/0030727020931122 . hal-02902808

HAL Id: hal-02902808

<https://hal.umontpellier.fr/hal-02902808>

Submitted on 20 Jul 2020

HAL is a multi-disciplinary open access archive for the deposit and dissemination of scientific research documents, whether they are published or not. The documents may come from teaching and research institutions in France or abroad, or from public or private research centers.

L'archive ouverte pluridisciplinaire **HAL**, est destinée au dépôt et à la diffusion de documents scientifiques de niveau recherche, publiés ou non, émanant des établissements d'enseignement et de recherche français ou étrangers, des laboratoires publics ou privés.

Fixing our global agricultural system to prevent the next COVID-19

Frédéric Baudron¹  and Florian Liégeois²

Outlook on Agriculture
2020, Vol. 49(2) 111–118
© The Author(s) 2020



Article reuse guidelines:
sagepub.com/journals-permissions
DOI: 10.1177/0030727020931122
journals.sagepub.com/home/oag



Abstract

While the world's attention is focused on controlling COVID-19, evidence points at the biodiversity crisis as a leading factor in its emergence, and the outbreak of many past emerging infectious diseases. Agriculture is a major driver of biodiversity loss globally. Feeding a growing human population in ways that minimize harm to biodiversity is thus imperative to prevent the next COVID-19. Solutions exist, but the burden of implementing them should not be left to farmers alone, who are mainly small-scale family farmers. Supportive policies and markets are needed, but unlikely to bring about the required changes alone. A global concerted effort similar to the Paris Agreement for climate is probably required.

Keywords

Emerging infectious diseases, biodiversity, farming, land sparing, land sharing, ecosystem services

Viewpoint

Infectious diseases are caused by pathogenic microorganisms, such as bacteria, viruses, parasites or fungi (Anderson et al., 1991). The most recent, COVID-19, is caused by the SARS-CoV-2, a virus that belongs to the *Coronaviridae* family, and has spread across the globe in about 2 months from its origin in China, infecting people and claiming lives at an exponential rate, and leading to measures that are disrupting the global economy in an attempt to contain it (Hellewell et al., 2020; McKibbin and Fernando, 2020; Ramelli and Wagner, 2020; Sohrabi et al., 2020). Outbreaks of infectious diseases are on the rise (Smith et al., 2014). Most are zoonotic (60% of 335 infectious disease outbreaks that occurred between 1940 and 2004), meaning that they are spread from animals to humans, and the majority of these zoonoses (72% of the zoonoses that occurred between 1940 and 2004) originates from wildlife (Jones et al., 2008). COVID-19 is just the last in a long list of zoonoses originating from wildlife species (Zhou et al., 2020). In the past 20 years only, humanity was hit by three coronaviruses (SARS-CoV-1, 2003, Li et al., 2005; MERS-CoV, 2012, Zumla et al., 2015, SARS-CoV-2, 2019, Sohrabi et al., 2020), one influenza virus (Swine flu, 2009, Borkenhagen et al., 2019), two arboviruses (Sam et al., 2015; Zika virus, 2015, Metsky et al., 2017) and one filovirus (Ebola virus, 2014 and 2018, Bourgarel and Liégeois, 2019). When in 2017, it was demonstrated that SARS-CoV-1 may have emerged through recombination among different virus strains in a single bat population in a cave in Southern China, the authors of the paper warned that “*the risk of spillover into people and emergence of a disease similar to SARS is possible*” (Hu et al., 2017). This indeed

reads like a forecast of SARS-CoV-2 and the current COVID-19 pandemic . . .

So why do we see more cases of pathogens crossing from wildlife to humans? Several lines of evidence point to the current biodiversity crisis—which can be qualified as mass extinction (Barnosky et al., 2011)—as one of the primary causes. Land use change has been the leading driver in the emergence of zoonoses caused by a pathogen with a wildlife origin between 1940 and 2004 (Figure 1). The link between deforestation and these events has been established both theoretically (Faust et al., 2018), as well as empirically in a number of cases, including the emergence of *Mycobacterium ulcerans* and the recent outbreak of Ebola (Morris et al., 2016; Olivero et al., 2017). First, deforestation brings wildlife and people (and their livestock) into greater contact, increasing the risk of spillover (Morse et al., 2012). The fact that 70% of forests are within 1 km of a forest edge (Haddad et al., 2015) illustrates how pervasive ecotones, where wildlife, people and livestock interact, are. Second, species that survive (or thrive) during deforestation tend to be less sensitive to human disturbance (opportunistic/generalist species), and thus the ones most able to transmit pathogens to humans (or their livestock) (Johnson et al., 2020; Keesing et al., 2010).

¹ CIMMYT (International Maize and Wheat Improvement Center) Southern Africa Regional Office, Harare, Zimbabwe

² IRD UMR-MIVEGEC, University of Montpellier, Montpellier, France

Corresponding author:

Frédéric Baudron, CIMMYT, 12.5 km Peg Mazowe Road, Harare, Zimbabwe.

Email: f.baudron@cgiar.org

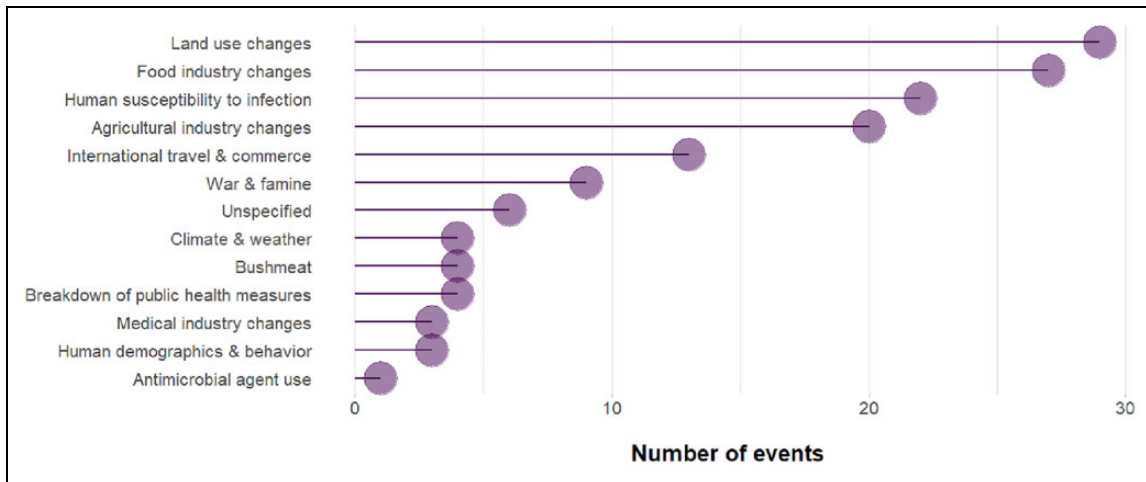


Figure 1. Most commonly cited driver associated with 145 events of zoonotic emerging infectious diseases caused by a pathogen with a wildlife origin between 1940 and 2004 (from data published by Jones et al., 2008). “Land use changes” generally refer to changes in cropping practices and “agricultural industry changes” generally refers to changes in livestock husbandry. Together, they represent more than a third of all events.

Finally, pathogens may be more prevalent in animal communities with reduced diversity. Diverse host communities tend to include less competent reservoir species for any given pathogen, lowering prevalence and risk of spillover (to humans or livestock), a phenomenon known as the “dilution effect” (Ostfeld, 2009). Trophic downgrading—the extirpation of apex consumers through human activities (Estes et al., 2011)—is less visible and quantifiable than deforestation, but can lead to similar changes in wildlife communities with ripple effects on a number of ecosystem processes including disease dynamics (Dirzo et al., 2014). For example, the continuing emergence of Lyme disease in North America has been attributed to the decline of the red fox, leading to an increase in the abundance of small mammal hosts of the pathogen (Levi et al., 2012). Extirpation of lions and leopards in parts of Ghana led to an increased abundance of baboons coming more frequently into contact with people, with high transmission risk of intestinal parasites (Ryan et al., 2012; Taylor et al., 2016). In India, the increasing number of human cases of rabies has been linked to the decline of vultures (Markandya et al., 2008).

Once biodiversity changes have altered the dynamics of pathogen transmission, the likelihood of spillover to humans is high. Indeed, humans are one of the most abundant vertebrates worldwide, representing 36% of the global biomass of mammals (Bar-On et al., 2018), and we interact with almost every ecosystem around the world (Ellis and Ramankutty, 2008). This risk is, of course, increased by practices such as bush meat consumption (Wolfe et al., 2005). Yet at the same time, bushmeat represents a critical source of quality protein and readily available micronutrients with few alternatives for millions of people in tropical countries (Fa et al., 2003; Golden et al., 2011). Rodents and bats are often the origin of zoonoses caused by a pathogen with a wildlife origin (Figure 2; bats are for example known reservoirs of SARS-like coronaviruses; Hu et al., 2017), simply because these two orders represent more than 60% of all mammal species (Burgin et al., 2018) while

pathogen richness tends to correlate with host species richness (Mollentze and Streicker, 2020). Many zoonotic pathogens may then be transmitted to humans directly from these reservoirs (e.g., Ebola, Olivero et al., 2017) or through another intermediate wild host (e.g., SARS, for which the palm masked civet was likely an intermediate host between bats and humans; Li et al., 2005). For many others, however, livestock is an intermediate host (Figure 2). Livestock and poultry are indeed very abundant vertebrates worldwide, representing 60% of the global biomass of mammals and 70% of the global biomass of birds, respectively (Bar-On et al., 2018), and have accompanied human in most ecosystems around the world (Gilbert et al., 2018). Livestock—particularly when kept in industrial operations where large numbers of animals of low genetic diversity are confined—may amplify pathogens and provide them with an opportunity to mutate and become transmissible to humans (Jones et al., 2013). Change in livestock husbandry has been an important driver in the emergence of zoonoses caused by a pathogen with a wildlife origin between 1940 and 2004 (Figure 1). Industrial poultry farming played a major role in the outbreak of the H5N1 avian influenza (Graham et al., 2008). The recent outbreak of Middle East respiratory syndrome (which is caused by a coronavirus, similarly to COVID-19) is thought to have crossed from bats to humans, with camels as an intermediate “stepping stone” (Zumla et al., 2015).

Safeguarding biodiversity thus appears essential to prevent future pandemic zoonotic diseases. In a 2017 article of Nature that followed the publication of evidence suggesting that SARS-CoV-1 emerged from a bat colony in Southern China, Professor Kwok-Yung Yuen—one of the co-discoverer of the SARS coronavirus—warned that to prevent the emergence of another SARS-like zoonosis “we should not disturb wildlife habitats and never put wild animals into markets” (Cyranoski, 2017). If overexploitation remains a leading threat, agriculture was found to be one of the “biggest killers” for 62% of the species listed as

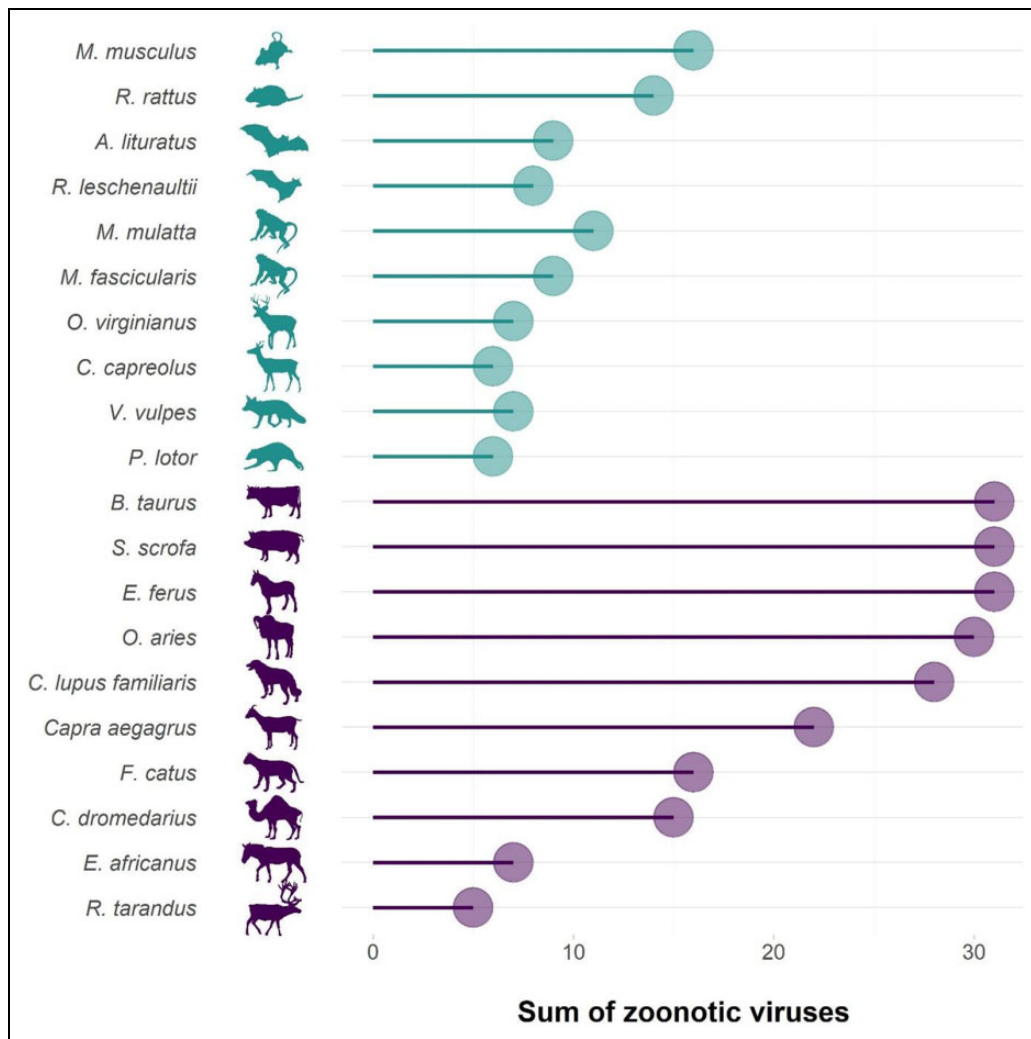


Figure 2. Sum of zoonotic viruses carried by most common livestock and pet mammal species compared to the wild mammal species with the highest sums in the orders Rodentia, Chiroptera, Primates, Artiodactyla and Carnivora (two species per order, from data published by Johnson et al., 2020).

threatened or nearly threatened (Maxwell et al., 2016) (crop farming was found to threaten 54% of these species and livestock farming 26%). About 22% of the land area represented by Biodiversity Hotspots is threatened by agricultural expansion (Veach et al., 2017). Furthermore, these areas often overlap with emerging disease “hotspots” (Jones et al., 2008). Agricultural expansion, as well as agricultural intensification, are major drivers of biodiversity loss (Baudron and Giller, 2014; Foley et al., 2011; Kehoe et al., 2017). Feeding a growing human population in ways that minimize harm to biodiversity is thus imperative, and core to achieving the “World we Want” (UN General Assembly, 2015).

Norman Borlaug—wheat scientist, “Father of the Green Revolution” and recipient of the Nobel Peace Prize in 1970—argued that agricultural intensification does just that: sparing land for nature (Borlaug, 2007). If crop yields had remained at their 1961 levels, India would have required 19.9 million ha of additional land to reach the amount of maize produced in 2018 and 87.6 million ha of additional land for its wheat production in 2018 (Figure 3).

Mexico would have similarly required a substantial amount of additional land, likely through conversion of nature to farmland (22.2 million ha for maize and 1.2 million ha for wheat; Figure 3). Spared areas are smaller in countries largely bypassed by the Green Revolution, such as Kenya, but still substantial (1.1 million ha for maize, and 0.2 million ha for wheat; Figure 3). Several publications have demonstrated that maximizing crop yields and thereby limiting the total area under agriculture—an approach known as “the Borlaug hypothesis” or “land sparing”—could be our best option to minimize trade-offs between agriculture and biodiversity (Balmford et al., 2019; Phalan et al., 2011). Recommending to segregate biodiversity and agriculture (and other human activities) is indeed tempting to reduce the risk of emerging zoonoses (Marco et al., 2020).

Land sparing however, suffers from at least two major weaknesses. First, maximizing yields implies the use of large quantities of agricultural inputs, often impacting a larger area than merely the land farmed intensively. When large rates of nutrients (e.g., nitrates and phosphates) and pesticides are used, they may be transported for thousands

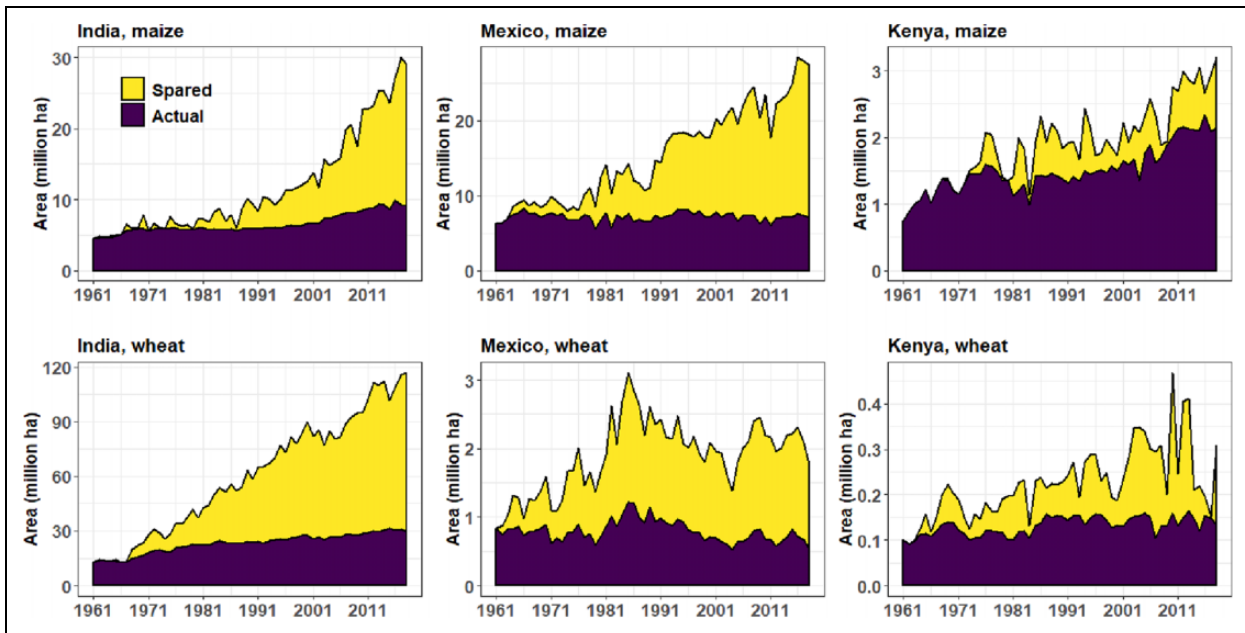


Figure 3. Comparison of actual land and land that has been theoretically spared by yield increase (i.e., additional land that would have been needed if yields had remained at their 1961 levels) for maize and wheat in India, Mexico and Kenya (source: FAOSTAT).

of kilometers downstream and downwind (Carpenter et al., 1998; Gordon et al., 2008; Hoferkamp et al., 2010; Smith et al., 1999). Second, maximizing yields is often accompanied by extreme simplification of agroecosystems and loss of farmland biodiversity. This may reduce ecosystem dis-services—such as the risk of zoonosis emergence—but it also cuts farmers from vital ecosystem services, including soil fertility maintenance, pest control and regulation of microclimate (Kebede et al., 2018; Sida et al., 2019; Yang et al., 2020). Ecosystem services provided by biodiversity may have far reaching impacts on human well-being, including improved diets (Baudron et al., 2019b). Indeed, such services are particularly crucial to family farmers in developing countries (as in the examples given), as they use insignificant quantities of external input and often cannot afford them. They are often qualified as being “organic by default”—but still produce more than half of the food consumed globally through processes supported by nature (Tittonell et al., 2016). Ecosystem services are also important for the sustainability of other—more intensive—production systems as well, as they also depend on ecosystem services as highlighted by a recent FAO report (FAO, 2019). The urgency to maintain ecosystem services to sustain the global food system is epitomized by the increase in soil degradation and in pesticide use (illustrating the decline of pest biocontrol), and by the decline of pollinators worldwide (Garibaldi et al., 2009; Oldeman, 1994; Wilson and Tisdell, 2001).

In response to these issues, and at the opposite side of the spectrum of solutions to minimize trade-offs between agriculture and biodiversity is “land sharing” (Clough et al., 2011; Perfecto and Vandermeer, 2010; Wright et al., 2012). It is based on a land-use model that integrates (rather than segregates) production and biodiversity on the same land units, by minimizing the use of external inputs

and retaining patches of natural habitat within farmlands. Land sharing, however, also suffers from at least two major weaknesses. First, low-input agriculture generally achieves yields inferior to those achieved by intensive farming, and thus consumes more space—likely taken away from nature—to meet any production target (Green et al., 2005). Second, agriculture can rarely be sustained without some degree of external inputs. For instance, some nutrient inputs are needed to at least compensate nutrients exported in harvest (Vitousek et al., 2009). In addition, crop losses due to pests tend to be severe and pesticide-free farming can only be achieved in rare situations (Lucchi and Benelli, 2018; Oerke, 2006).

Ultimately, principles from both land sparing and land sharing will be part of the required solution: inputs are needed, but their spill-over needs to be managed (through e.g., conservation agriculture and precision farming); efforts to increase productivity need to be balanced with the need to retain ecosystem services; and using a landscape approach, as ecological flows of energy, materials (e.g., soil, water) and organisms (e.g., natural enemies, pollinators, species of concern to conservation) are best understood and managed at landscape-level, not at plot-level (Baudron and Giller, 2014). A landscape approach to reduce tradeoffs between farming and biodiversity involves “targeted sparing,” in biodiversity hotspots only, and only to the degree necessary for maintaining critical wildlife habitats (e.g., habitat of species with restricted range; Folberth et al., 2020). In areas where the opportunity cost of taking land away from production is high, such targeted sparing should center on the establishment of networks of small natural or semi-natural areas across the landscape rather than large contiguous conservation areas (Maes et al., 2015). These networks should however cover the range of abiotic conditions in the landscape, including

some highly productive land, for biodiversity to be effectively conserved (Fischer et al., 2006). It is also beneficiary for the network to include critical transition zones (e.g., riparian areas, mangroves), due to the critical role they play as conduits for materials and organisms between adjacent ecosystems (Ewel et al., 2001). In addition to be feeding and breeding grounds, as well as dispersal corridors, for many species, they provide critical ecosystem services including the regulation of water flow, and the trapping and transformation of sediments, nutrients and pollutants (Levin et al., 2001; Richardson et al., 2007). The role multifunctional landscapes can play in both conserving biodiversity and feeding people now and in the future is increasingly recognized (Kremen and Merenlender, 2018). Southern Ethiopia offers an example of such a multifunctional landscape that hosts high biodiversity while being more productive than simpler landscapes (Baudron et al., 2019a). This multifunctional landscape of Southern Ethiopia is also more sustainable and resilient (Duriaux Chavarría et al., 2018), provide more diverse diets (Baudron et al., 2017) and produce staple food with higher nutritional content (Wood et al., 2018).

Current policies and markets, however, tend to impede multifunctional landscapes, and to promote instead simplified agricultural landscapes depleted in biodiversity, highly dependent on external inputs and susceptible to shocks and stresses. Promoting “*landscapes that work for nature and people*” (Kremen and Merenlender, 2018) requires the removal of perverse policies such as subsidies and distortions, and their replacement by incentives that promote production systems that are less demanding of land and other natural resources (Mooney et al., 2005). Agricultural landscapes are also shaped by our consumption patterns. Consumers in developed countries (in particular) export biodiversity threats through their consumption of coffee, tea, chocolate, sugar, textiles, fish, etc (Lenzen et al., 2012). In order to promote consumption patterns that reduce impact on biodiversity, proper pricing, certification and labeling are required. The true costs and benefits to nature of agricultural practices need to be embodied in the prices of the corresponding commodities (Balmford et al., 2002). Environmental labels have a long history (e.g., organic produce, Protected Designation of Origin, Gracia and de-Magistris, 2016) and could be expanded to communicate impacts and benefits on nature to consumers, as an incentive to purchase more environmentally-friendly products. Consumption patterns that cause biodiversity loss tend to also be those causing unhealthy diets, one of today’s leading risk factors for mortality globally (Willett et al., 2019).

Yet supportive policies and markets alone are unlikely to bring about the required changes. A large share of the global food produced does not enter the market, but is consumed by the small-scale family farmers who produce it (Frelat et al., 2016). Reducing the negative impact of our agricultural systems on biodiversity will thus require a global, concerted effort similar to the Paris Agreements for climate. Although several high-profile reports have recently highlighted the importance of biodiversity for our

very existence (FAO, 2019; HLPE, 2017; IPBES, 2019), raising public awareness of the consequences of the biodiversity crisis to the same intensity as awareness of the consequences of the climate crisis is critical (Legagneux et al., 2018). In a more-and-more connected world, we share joint responsibility for our global future. We must shoulder the burden of feeding humanity whilst maintaining the very biodiversity that confers resilience on our increasingly cultivated planet against shocks such as the global pandemic of COVID-19.

Acknowledgements

We are grateful to Ken E. Giller and Bruno Gérard for their comments on an earlier version of the manuscript. We also thank an anonymous reviewer for his/her critical and constructive comments.

Author contributions

FB conceived the paper and wrote the first draft of the manuscript. FL contributed to the writing of the final manuscript


Declaration of conflicting interests

The author(s) declared no potential conflicts of interest with respect to the research, authorship, and/or publication of this article.

Funding

The author(s) received no financial support for the research, authorship, and/or publication of this article.

ORCID iD

Frédéric Baudron  <https://orcid.org/0000-0002-5648-2083>

References

- Anderson RM, Anderson B and May RM (1991) *Infectious Diseases of Humans: Dynamics and Control*. Oxford: Oxford University. Available at: https://books.google.co.zw/books?hl=en&lr=&id=HT0-xXBguQC&oi=fnd&pg=PA27&ots=IdoeOPVScn&sig=HDpUgcZLc3VMYPhRiX-ou_fRWeg&redir_esc=y#v=onepage&q&f=false (accessed 30 March 2020).
- Balmford A, Bruner AG, Cooper P, et al. (2002) Economic reasons for conserving wild nature. *Science (New York, N.Y.)* 297(5583): 950–953.
- Balmford B, Green RE, Onial M, et al. (2019) How imperfect can land sparing be before land sharing is more favourable for wild species? *Journal of Applied Ecology* 56(1): 73–84
- Barnosky AD, Matzke N and Tomiya S (2011) Has the Earth’s sixth mass extinction already arrived? *Nature* 471(7336): 51–57.
- Bar-On YM, Phillips R and Milo R (2018). The biomass distribution on Earth. *Proceedings of the National Academy of Sciences* 115(25): 6506–6511. DOI: 10.1073/pnas.1711842115.
- Baudron F and Giller KE (2014) Agriculture and nature: trouble and strife? *Biological Conservation* 170: 232–245.
- Baudron F, Duriaux J-Y, Remans R, et al. (2017) Indirect contributions of forests to dietary diversity in southern Ethiopia. *Ecology and Society* 22: 28.

- Baudron F, Schultner J, Duriaux J-Y, et al. (2019a). Agriculturally productive yet biodiverse: human benefits and conservation values along a forest-agriculture gradient in Southern Ethiopia. *Landscape ecology* 34(2): 341–356. DOI: 10.1007/s10980-019-00770-6.
- Baudron F, Tomscha SA, Powell B, et al. (2019b). Testing the various pathways linking forest cover to dietary diversity in tropical landscapes. *Frontiers in Sustainable Food Systems* 3: 97. DOI: 10.3389/fsufs.2019.00097.
- Borkenhagen LK, Salman MD, Ma MJ, et al. (2019) Animal influenza virus infections in humans: a commentary. *International Journal of Infectious Diseases* 88: 113–119.
- Borlaug N (2007) Feeding a hungry world. *Science* 318(5849): 359.
- Bourgarel M and Liégeois F (2019) Ebola and other haemorrhagic fevers. In: Kardjadj M, Diallo A and Lancelot R (eds) *Transboundary Animal Diseases in Sahelian Africa and Connected Regions*. New York City: Springer International Publishing, pp. 179–205.
- Burgin CJ, Colella JP, Kahn PL, et al. (2018) How many species of mammals are there? *Journal of Mammalogy* 99(1): 1–14.
- Carpenter SR, Caraco NF, Correll DL, et al. (1998) Nonpoint pollution of surface waters with phosphorus and nitrogen. *Ecological Applications* 8(3): 559–568.
- Clough Y, Barkmann J, Juhbandt J, et al. (2011) Combining high biodiversity with high yields in tropical agroforests. *Proceedings of the National Academy of Sciences of the United States of America* 108(20): 8311–8316.
- Cyranoski D (2017) SARS outbreak linked to Chinese bat cave scientists pitch for remote human lab. *Nature* 552: 15–16.
- Dirzo R, Young HS, Galetti M, et al. (2014) Defaunation in the anthropocene. *Science* 345(6195): 401–406.
- Duriaux Chavarría JY, Baudron F and Sunderland T (2018) Retaining forests within agricultural landscapes as a pathway to sustainable intensification: evidence from Southern Ethiopia. *Agriculture, Ecosystems and Environment* 263(April): 41–52.
- Ellis EC and Ramankutty N (2008) Putting people in the map: anthropogenic biomes of the world. *Frontiers in Ecology and the Environment* 6(8): 439–447.
- Estes JA, Terborgh J, Brashares JS, et al. (2011) Trophic downgrading of planet earth. *Science (New York, N.Y.)* 333(6040): 301–306.
- Ewel KC, Cressa C, Kneib RT, et al. (2001) Managing critical transition zones. *Ecosystems* 4(5): 452–460.
- Fa JE, Currie D and Meeuwig J (2003) Bushmeat and food security in the Congo Basin: linkages between wildlife and people's future. *Environmental Conservation* 30(1): 71–78.
- FAO (2019) *The State of the World's Biodiversity for Food and Agriculture*. In: Bélanger J and Pilling D (eds) Rome, Italy: FAO.
- Faust CL, McCallum HI, Bloomfield LSP, et al. (2018) Pathogen spillover during land conversion. Ostfeld R (ed.) *Ecology Letters* 21(4): 471–483.
- Fischer J, Lindenmayer DB and Manning AD (2006) Biodiversity, ecosystem function, and resilience: ten guiding principles for commodity production landscapes. *Frontiers in Ecology and the Environment* 4(2): 80–86.
- Folberth C, Khabarov N, Balkovič J, et al. (2020) The global cropland-sparing potential of high-yield farming. *Nature Sustainability* 3(4): 281–289.
- Foley JA, Ramankutty N, Brauman KA, et al. (2011) Solutions for a cultivated planet. *Nature* 478(7369): 337–342.
- Frelat R, Lopez-Ridaura S, Giller KE, et al. (2016) Drivers of household food availability in Sub-Saharan Africa based on big data from small farms. *Proceedings of the National Academy of Sciences of the United States of America* 113(2): 458–463.
- Garibaldi LA, Aizen MA, Cunningham SA, et al. (2009) Pollinator shortage and global crop yield: looking at the whole spectrum of pollinator dependency. *Communicative and Integrative Biology* 2(1): 37–39.
- Gilbert M, Nicolas G, Cinardi G, et al. (2018) Global distribution data for cattle, buffaloes, horses, sheep, goats, pigs, chickens and ducks in 2010. *Scientific Data* 5: 1–11.
- Golden CD, Fernald LCH, Brashares JS, et al. (2011) Benefits of wildlife consumption to child nutrition in a biodiversity hotspot. *Proceedings of the National Academy of Sciences* 108(49): 19653–19656
- Gordon LJ, Peterson GD and Bennett EM (2008) Agricultural modifications of hydrological flows create ecological surprises. *Trends in Ecology and Evolution* 23(4): 211–219.
- Gracia A and de-Magistris T (2016) Consumer preferences for food labeling: what ranks first? *Food Control* 61: 39–46.
- Graham JP, Leibler JH, Price LB, et al. (2008) The animal-human interface and infectious disease in industrial food animal production: rethinking biosecurity and biocontainment. *Public Health Reports* 123(3): 282–299.
- Green RE, Cornell SJ, Scharlemann JPW, et al. (2005) Farming and the fate of wild nature. *Science (New York, N.Y.)* 307(5709): 550–555.
- Haddad NM, Brudvig LA, Clobert J, et al. (2015) Habitat fragmentation and its lasting impact on earth's ecosystems. *Science Advances* 1(2): 1–9.
- Hellewell J, Abbott S, Gimma A, et al. (2020) Feasibility of controlling COVID-19 outbreaks by isolation of cases and contacts. *The Lancet Global Health* 488–496.
- HLPE (2017) *Nutrition and food systems*. A report by the High Level Panel of Experts on Food Security and Nutrition of the Committee on World Food Security, Rome, Italy.
- Hoferkamp L, Hermanson MH and Muir DCG (2010) Current use pesticides in arctic media; 2000-2007. *Science of the Total Environment* 408(15): 2985–2994.
- Hu B, Zeng LP, Yang XL, et al. (2017) Discovery of a rich gene pool of bat SARS-related coronaviruses provides new insights into the origin of SARS coronavirus. *PLoS Pathogens* 13(11): 1–27.
- IPBES (2019) *Global Assessment Report on Biodiversity and Ecosystem Services of the Intergovernmental Science-Policy Platform on Biodiversity and Ecosystem Services*. Brondizio ES, Settele J, Díaz S, et al. (eds). Bonn, Germany: IPBES Secretariat.
- Johnson CK, Hitchens PL, Pandit PS, et al. (2020) Global shifts in mammalian population trends reveal key predictors of virus spillover risk. *Proceedings of the Royal Society B* 287: 20192736.

- Jones BA, Grace D, Kock R, et al. (2013) Zoonosis emergence linked to agricultural intensification and environmental change. *Proceedings of the National Academy of Sciences* 110(21): 8399–8404.
- Jones KE, Patel NG, Levy MA, et al. (2008) Global trends in emerging infectious diseases. *Nature* 451(7181): 990–993.
- Kebede Y, Bianchi F, Baudron F, et al. (2018) Implications of changes in land cover and landscape structure for the biocontrol potential of stemborers in Ethiopia. *Biological Control* 122: 1–10.
- Keesing F, Belden LK, Daszak P, et al. (2010) Impacts of biodiversity on the emergence and transmission of infectious diseases. *Nature* 468(7324): 647–652.
- Kehoe L, Romero-Muñoz A, Polaina E, et al. (2017) Biodiversity at risk under future cropland expansion and intensification. *Nature Ecology and Evolution* 1(8): 1129–1135.
- Kremen C and Merenlender AM (2018) Landscapes that work for biodiversity and people. *Science* 362(6412): eaau6020.
- Legagneux P, Casajus N, Cazelles K, et al. (2018) Our house is burning: discrepancy in climate change vs. biodiversity coverage in the media as compared to scientific literature. *Frontiers in Ecology and Evolution* 5(January): 1–6.
- Lenzen M, Moran D, Kanemoto K, et al. (2012) International trade drives biodiversity threats in developing nations. *Nature* 486(7401): 109–112.
- Levi T, Kilpatrick AM, Mangel M, et al. (2012) Deer, predators, and the emergence of Lyme disease. *Proceedings of the National Academy of Sciences of the United States of America* 109(27): 10942–10947.
- Levin LA, Boesch DF, Covich A, et al. (2001) The function of marine critical transition zones and the importance of sediment biodiversity. *Ecosystems* 4(5): 430–451.
- Li W, Shi Z, Yu M, et al. (2005) Bats are natural reservoirs of SARS-like coronaviruses. *Science* 310(5748): 676–679.
- Lucchi A and Benelli G (2018) Towards pesticide-free farming? Sharing needs and knowledge promotes Integrated Pest Management. *Environmental Science and Pollution Research* 25(14): 13439–13445.
- Maes J, Barbosa A, Baranzelli C, et al. (2015) More green infrastructure is required to maintain ecosystem services under current trends in land-use change in Europe. *Landscape Ecology* 30(3): 517–534.
- DiMarco M, Baker ML, Daszak P, et al. (2020) Sustainable development must account for pandemic risk. *Proceedings of the National Academy of Sciences of the United States of America* 117(8): 3888–3892.
- Markandya A, Taylor T, Longo A, et al. (2008) Counting the cost of vulture decline—an appraisal of the human health and other benefits of vultures in India. *Ecological Economics* 67(2): 194–204.
- Maxwell SL, Fuller RA, Brooks TM, et al. (2016) Biodiversity: the ravages of guns, nets and bulldozers. *Nature* 536(7615): 143–145.
- McKibbin W and Fernando R (2020) The global macroeconomic impacts of COVID-19: Seven scenarios. *Centre for Applied Macroeconomic Analysis working paper No. 19/2020*, p. 43.
- Metsky HC, Matranga CB, Wohl S, et al. (2017) Zika virus evolution and spread in the Americas. *Nature* 546(7658): 411–415.
- Mollentze N and Streicker DG (2020) Viral zoonotic risk is homogenous among taxonomic orders of mammalian and avian reservoir hosts. *Proceedings of the National Academy of Sciences* 201919176. DOI: 10.1073/pnas.1919176117.
- Mooney HA, Cropper A and Reid W (2005) Confronting the human dilemma. *Nature* 434(7033): 561–562.
- Morris AL, Guégan JF, Andreou D, et al. (2016) Deforestation-driven food-web collapse linked to emerging tropical infectious disease, *Mycobacterium ulcerans*. *Science Advances* 2(12): e1600387.
- Morse SS, Mazet JAK, Woolhouse M, et al. (2012) Prediction and prevention of the next pandemic zoonosis. *The Lancet* 380(9857): 1956–1965.
- Oerke E-C (2006) Crop losses to pests. *Journal of Agricultural and Resource Economics* 144: 31–43.
- Oldeman LR (1994) The global extent of soil degradation. In: Greenland DJ and Szabolcs I (eds) *Soil Resilience and Sustainable Land Use*. Wallingford, UK: CAB Intern, pp. 19–36.
- Olivero J, Fa JE, Real R, et al. (2017) Recent loss of closed forests is associated with Ebola virus disease outbreaks. *Scientific Reports* 7(1): 1–9.
- Ostfeld RS (2009) Biodiversity loss and the rise of zoonotic pathogens. *Clinical Microbiology and Infection* 15(SUPPL. 1): 40–43.
- Perfecto I and Vandermeer J (2010) The agroecological matrix as alternative to the land-sparing/agriculture intensification model. *Proceedings of the National Academy of Sciences* 107(13): 5786–5791.
- Phalan B, Onial M, Balmford A, et al. (2011) Reconciling food production and biodiversity conservation: land sharing and land sparing compared. *Science (New York, N.Y.)* 333(6047): 1289–1291.
- Ramelli S and Wagner A (2020). Feverish stock price reactions to COVID-19. SSRN working paper, p. 53.
- Richardson DM, Holmes PM, Esler KJ, et al. (2007) Riparian vegetation: degradation, alien plant invasions, and restoration prospects. *Diversity and Distributions* 13(1): 126–139.
- Ryan SJ, Brashares JS, Walsh C, et al. (2012) A survey of gastrointestinal parasites of olive baboons (*Papio anubis*) in human settlement areas of mole national park, Ghana. *Journal of Parasitology* 98(4): 885–888.
- Sam IC, Kümmerer BM, Chan YF, et al. (2015) Updates on chikungunya epidemiology, clinical disease, and diagnostics. *Vector-Borne and Zoonotic Diseases* 15(4): 223–230.
- Sida TS, Baudron F, Ndoli A, et al. (2019) Should fertilizer recommendations be adapted to parkland agroforestry systems? Case studies from Ethiopia and Rwanda. *Plant and Soil* 4: 1–16. DOI: 10.1007/s11104-019-04271-y.
- Smith KF, Goldberg M, Rosenthal S, et al. (2014) Global rise in human infectious disease outbreaks. *Journal of the Royal Society Interface* 11(101): 1–6.
- Smith VH, Tilman GD and Nekola JC (1999) Eutrophication: impacts of excess nutrient inputs on freshwater, marine, and terrestrial ecosystems. *Environmental Pollution* 100(1–3): 179–196. Available at: <http://www.sciencedirect.com/science/article/pii/S0269749199000913#sec3.1>.
- Sohrabi C, Alsafi Z, O’Neill N, et al. (2020) World health organization declares global emergency: a review of the 2019 novel coronavirus (COVID-19). *International Journal of Surgery* 76(February): 71–76.

- Taylor RA, Ryan SJ, Brashares JS, et al. (2016) Hunting, food subsidies, and Mesopredator release: the dynamics of crop-raiding baboons in a managed landscape. *Ecology* 97(4): 951–960.
- Tittonell P, Klerkx L, Baudron F, et al. (2016) Ecological intensification: local innovation to address global challenges. In: Lichtfouse E (ed) *Sustainable Agriculture Reviews*. Cham, Switzerland: Springer International Publishing, pp. 1–34.
- UN General Assembly (2015) Transforming our World: the 2030 Agenda for Sustainable Development, 21 October 2015, A/RES/70/1. Available at: <https://www.refworld.org/docid/57b6e3e44.html> (accessed 2 April 2020).
- Veach V, Moilanen A and Minin ED (2017) Threats from urban expansion, agricultural transformation and forest loss on global conservation priority areas. *PLoS One* 12(11): 1–14.
- Vitousek PM, Naylor RL, Crews TE, et al. (2009) Nutrient imbalances in agricultural development. *Science* 324: 1519–1520.
- Willett W, Rockström J, Loken B, et al. (2019) Food in the Anthropocene: the EAT-Lancet Commission on healthy diets from sustainable food systems. *Lancet (London, England)* 393(10170): 447–492.
- Wilson C and Tisdell C (2001) Why farmers continue to use pesticides despite environmental, health and sustainability costs. *Ecological Economics* 39(3): 449–462.
- Wolfe ND, Daszak P, Kilpatrick AM, et al. (2005) Bushmeat hunting, deforestation, and prediction of zoonotic disease emergence. *Emerging Infectious Diseases* 11(12): 1822–1827.
- Wood SA, Baudron F and Tirfessa D (2018) Soil organic matter underlies crop nutritional quality and productivity in small-holder agriculture. *Agriculture, Ecosystems and Environment* 266(July): 100–108.
- Wright HL, Lake IR and Dolman PM (2012) Agriculture—a key element for conservation in the developing world. *Conservation Letters* 5(1): 11–19.
- Yang KF, Gergel SE and Baudron F (2020) Forest restoration scenarios produce synergies for agricultural production in southern Ethiopia. *Agriculture, Ecosystems and Environment* 295(September 2019): 106888.
- Zhou P, Yang X-L, Wang X-G, et al. (2020) Discovery of a novel coronavirus associated with the recent pneumonia outbreak in humans and its potential bat origin. *Nature* 579(7798): 270–273. DOI: 10.1101/2020.01.22.914952.
- Zumla A, Hui DS and Perlman S (2015) Middle East respiratory syndrome. *The Lancet* 386(9997): 995–1007.