



HAL
open science

Enhanced Cardiomyocyte Ca²⁺ + Cycling Precedes Terminal AV-Block in Mitochondrial Cardiomyopathy Mterf3 KO Mice

Daniel Andersson, J. Fauconnier, Chan Bae Park, Shi-Jin Zhang, Jérôme Thireau, Niklas Ivarsson, Nils-Göran Larsson, Håkan Westerblad

► **To cite this version:**

Daniel Andersson, J. Fauconnier, Chan Bae Park, Shi-Jin Zhang, Jérôme Thireau, et al.. Enhanced Cardiomyocyte Ca²⁺ + Cycling Precedes Terminal AV-Block in Mitochondrial Cardiomyopathy Mterf3 KO Mice. *Antioxidants and Redox Signaling*, 2011, 15 (9), pp.2455-2464. 10.1089/ars.2011.3915 . hal-02542081

HAL Id: hal-02542081

<https://hal.umontpellier.fr/hal-02542081>

Submitted on 14 Apr 2020

HAL is a multi-disciplinary open access archive for the deposit and dissemination of scientific research documents, whether they are published or not. The documents may come from teaching and research institutions in France or abroad, or from public or private research centers.

L'archive ouverte pluridisciplinaire **HAL**, est destinée au dépôt et à la diffusion de documents scientifiques de niveau recherche, publiés ou non, émanant des établissements d'enseignement et de recherche français ou étrangers, des laboratoires publics ou privés.

Enhanced Cardiomyocyte Ca²⁺ Cycling Precedes Terminal AV-Block in Mitochondrial Cardiomyopathy *Mterf3* KO Mice

Daniel C. Andersson,^{1,*} Jérémy Fauconnier,² Chan Bae Park,^{3,†} Shi-Jin Zhang,¹ Jérôme Thireau,² Niklas Ivarsson,¹ Nils-Göran Larsson,^{3,‡} and Håkan Westerblad¹

Abstract

Aims: Heart disease is commonly associated with altered mitochondrial function and signs of oxidative stress. This study elucidates whether primary cardiac mitochondrial dysfunction causes changes in cardiomyocyte handling of reactive oxygen species (ROS) and Ca²⁺. We used a mouse model with a tissue-specific ablation of the recently discovered mtDNA transcription regulator *Mterf3* (*Mterf3* KO). These mice display a cardiomyopathy with severe respiratory chain dysfunction, cardiac hypertrophy, and shortened lifespan. ROS and Ca²⁺ handling were measured using fluorescent indicators and confocal microscopy. **Results:** *Mterf3* KO hearts displayed no signs of increased ROS production or oxidative stress. Surprisingly, *Mterf3* KO cardiomyocytes showed enlarged Ca²⁺ transient amplitudes, faster sarcoplasmic reticulum (SR) Ca²⁺ reuptake, and increased SR Ca²⁺ load, resembling increased adrenergic stimulation. Furthermore, spontaneous releases of Ca²⁺ were frequent in *Mterf3* KO cardiomyocytes. Electrocardiography (measured with telemetry in freely moving mice) showed a terminal state in *Mterf3* KO mice with gradually developing bradycardia and atrioventricular block. **Conclusion:** In conclusion, mitochondrial dysfunction induced by *Mterf3* KO leads to a cardiomyopathy without signs of oxidative stress but with increased cardiomyocyte Ca²⁺ cycling and an arrhythmogenic phenotype. These findings highlight the complex interaction between mitochondrial function, cardiomyocyte contractility, and compensatory mechanisms, such as activation of adrenergic signaling.

Introduction

PRIMARY MITOCHONDRIAL DISEASES are characterized by defective cellular respiration and are typically caused by mutations in genes encoding for proteins in the respiratory chain (22). The proteins of the mitochondrial respiratory chain are transcribed by genes from both the nuclear DNA and the mitochondrial DNA (mtDNA). Moreover, all transcription factors for the mitochondrial genome are encoded in the nucleus. Thus, respiratory chain function is dependent on a complex interplay between mitochondrial and nuclear genomes (38). Tissues with high energy demand (*e.g.*, brain, cardiac and skeletal muscle) are commonly affected in mitochondrial disease (33). Cardiac involvement in mitochondrial disease can be manifested both as dilated and hypertrophic cardiomyopathy, often in conjunction with rhythm distur-

bances, such as atrioventricular conduction block (AV-block) (22). Moreover, mitochondrial dysfunction is implicated in the mechanisms of heart failure in general (26, 47). It has been suggested that the respiratory chain dysfunction in mitochondrial diseases leads to increased production of reactive oxygen species (ROS) and oxidative stress (13).

Transcription of mtDNA is controlled by proteins encoded in the nucleus that are imported into the mitochondria, for example, mitochondrial RNA polymerase (POLRMT), mitochondrial transcription factor A (Tfam), and mitochondrial transcription factor B1 (TFB1M) and B2 (TFB2M). Recently, a new regulatory protein of mammalian mtDNA transcription was described, the mitochondrial transcription termination factor 3 (MTERF3) (31). MTERF3 works by repressing initiation of mtDNA transcription and is the first specific negative regulator of mtDNA transcription to be described.

¹Department of Physiology and Pharmacology, Karolinska Institutet, Stockholm, Sweden. Most of the work was done in this department.

²INSERM U1064, Université Montpellier 1; Université Montpellier 2, Montpellier, France.

³Department of Laboratory Medicine, Karolinska Institutet, Stockholm, Sweden.

*Current affiliation: Department of Physiology and Cellular Biophysics, Columbia University, New York, New York.

†Current affiliation: Institute for Medical Sciences, Ajou University School of Medicine, Suwon, Korea.

‡Current affiliation: Max Planck Institute for Biology of Ageing, Cologne, Germany.

Innovation

Heart disease is commonly associated with altered mitochondrial function. To study the link between defective mitochondria and cardiac dysfunction, a genetically engineered mouse model was used that displays severe respiratory chain dysfunction in cardiomyocytes, muscle-specific *Mterf3* KO mice. *Mterf3* KO cardiomyocytes showed no signs of oxidative stress, sarcoplasmic reticulum Ca^{2+} overload and an increased number of spontaneous Ca^{2+} release-events, reduced heart rate variability indicating increased sympathetic drive, and terminal progressive bradycardia ending with a complete atrioventricular conduction block. These findings highlight the complex interaction between mitochondrial function, cardiomyocyte contractility, and compensatory mechanisms such as activation of adrenergic signaling. The results support a central role of mitochondria in the early phase of cardiomyopathic disease, characterized by activation of adrenergic signaling and elevated risk of premature death.

Cardiac contractility critically depends on tightly controlled fluxes of Ca^{2+} within the cardiomyocyte. Disturbances in the Ca^{2+} handling can underlie pathological conditions such as heart failure and cardiac arrhythmias (5). In cardiomyocytes of end-stage cardiomyopathy and heart failure, action potential-triggered Ca^{2+} release from the sarcoplasmic reticulum (SR) into the cytoplasm is reduced and the reuptake of Ca^{2+} into the SR is slowed (16). Thus, in failing cardiomyocytes, the SR Ca^{2+} cycling process is depressed, leading to reduced contractility. The inotropic response to β -adrenergic stimulation in the end-stage cardiomyopathy is typically blunted (6) due to downregulation of mediators in the β -adrenoreceptor signaling cascade (49). However, cardiomyocytes from hypertrophic hearts have been shown to have preserved responsiveness to β -adrenergic stimulation (23).

This suggests that in the cardiomyopathy progress, before the disease enters a fulminant heart failure, there is a point where reduced cardiac contractility can be compensated by increased sympathetic drive.

We have studied a new mouse model of primary mitochondrial cardiomyopathy where the *Mterf3* gene was ablated specifically in cardiac and skeletal muscle. Mice with *Mterf3* ablation (*Mterf3* KO) display a defective mtDNA transcription. This causes dramatically decreased activity in respiratory chain complexes and a consequent decline in mitochondrial ATP production rate from ~ 12 weeks age (31). Moreover, the mitochondria *Mterf3* KO mice show a disfigured appearance and the relative mitochondrial mass is markedly increased in >12 weeks old *Mterf3* KO compared to control mice (31). These findings are consistent with what is seen in biopsy specimens from patients with mitochondrial cardiomyopathy (22). Furthermore, *Mterf3* KO mice develop cardiac hypertrophy and have a maximal lifespan of only 18 weeks (31). No pathological phenotype is observed in skeletal muscles of the *Mterf3* KO mice (3, 31).

In the present study, we used the *Mterf3* KO model to investigate cardiomyocyte ROS production, Ca^{2+} signaling, and contractility associated with primary mitochondrial dysfunction. We used hearts from >12 -week-old mice, where major changes in mitochondrial function is observed in *Mterf3* KO mice. Surprisingly, cardiomyocytes of *Mterf3* KO mice display increased SR Ca^{2+} load with larger amplitude and faster decay of cytoplasmic Ca^{2+} transients. Since these changes cannot explain the short lifespan of *Mterf3* KO mice, we used telemetry to follow cardiac function with electrocardiography (ECG), body temperature, and locomotor activity for several days at the end of their expected lifetime. The results show that shortly before death, the *Mterf3* KO mice display a gradually developing bradycardia and AV-block. Thus, this model of cardiomyopathy shed light on the role of mitochondrial dysfunction in the complex mechanisms of cardiac arrhythmias and cardiomyopathy.

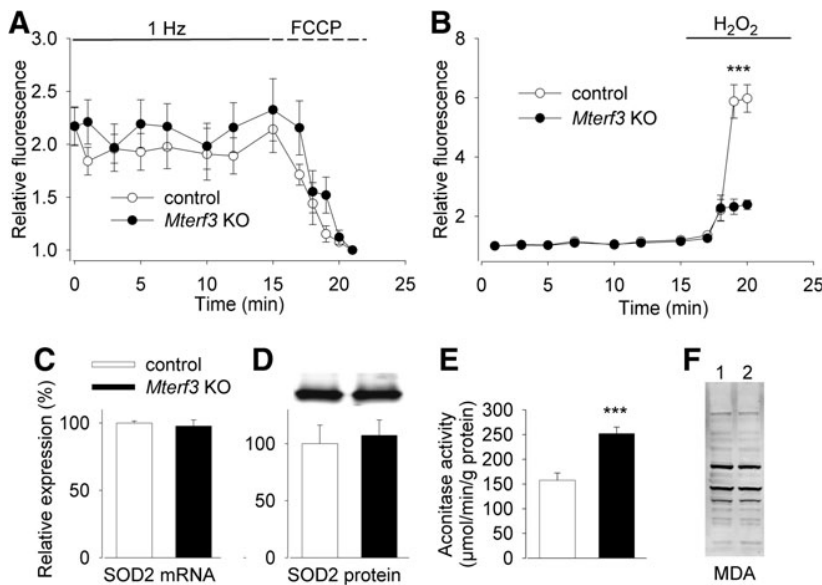


FIG. 1. Signs of reduced ROS production in *Mterf3* KO hearts. (A) Mitochondrial membrane potential ($\Delta\Psi_m$) during 1 Hz stimulation and in the presence of the depolarizing agent FCCP (relative fluorescence normalized to the maximal depolarizing effect of FCCP; control, $n=12$ cells from 2 mice; *Mterf3* KO, $n=15$ cells from 2 mice). (B) Change in MitoSOX Red fluorescence on 1 Hz stimulation and under product inhibition of SOD with H_2O_2 (control, $n=12$ cells from 2 animals, *Mterf3* KO, $n=7$ cells from 2 animals). (C) mRNA expression of SOD2 in the control ($n=3$) and *Mterf3* KO ($n=3$) hearts. Mean value in control set to 100%. (D) Protein expression of SOD2 in control ($n=3$) and *Mterf3* KO ($n=4$) hearts. Measurements normalized to protein content and the mean value in control set to 100%. Representative blots shown above bars. (E) Aconitase activity normalized to the sample protein content in control ($n=5$) and *Mterf3* KO ($n=7$) hearts; *** $p < 0.001$. (F) Representative Western blot of total MDA protein adducts in control (lane 1) and *Mterf3* KO (lane 2) heart. Similar results were obtained in three more hearts of each group.

Results

No signs of mitochondrial membrane depolarization or oxidative stress in *Mterf3* KO

Mterf3 KO mice display severely defective cardiac respiratory chain function and reduced mitochondrial ATP production rate (31). This prompted us to investigate whether the mitochondrial membrane potential ($\Delta\Psi_m$) was altered in the *Mterf3* KO mouse. We used intact cardiomyocytes loaded with the membrane permeable fluorescent indicator TMRE that accumulates in the mitochondria in a $\Delta\Psi_m$ -dependent manner. No difference in $\Delta\Psi_m$ was found between *Mterf3* KO and control cardiomyocytes either during 1 Hz stimulation under control conditions or in the presence of the depolarizing agent FCCP (Fig. 1A). We also measured mitochondrial $O_2^{\cdot-}$ production in *Mterf3* KO cardiomyocytes. Freshly isolated cardiomyocytes were loaded with the $O_2^{\cdot-}$ specific indicator MitoSOX Red and paced at 1 Hz. The MitoSOX Red signal was not changed during the stimulation period in either control or *Mterf3* KO (Fig. 1B). To assess the mitochondrial capacity of $O_2^{\cdot-}$ production, we exposed the cells to 1 mM of H_2O_2 , which would induce product inhibition of the SOD2 and thereby restrain the conversion of $O_2^{\cdot-}$ to H_2O_2 (3, 17, 29). This resulted in large increases in MitoSOX Red fluorescence in the control cardiomyocytes, whereas this increase was considerably smaller in the *Mterf3* KO cells (Fig. 1B).

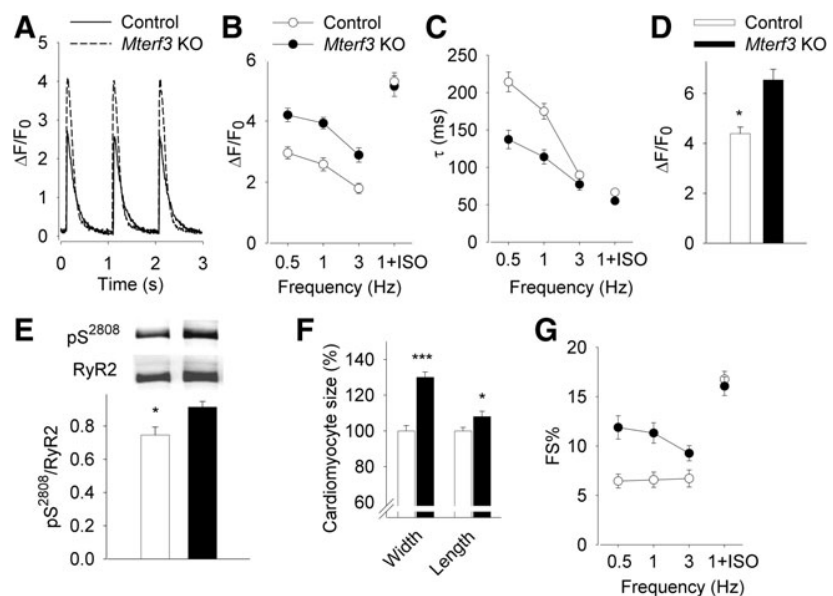
The expression of SOD2 can be altered under conditions of oxidative stress (40). However, neither mRNA nor protein expression of SOD2 differed between *Mterf3* KO and control hearts (Figs. 1C and 1D). We also measured the activity of the mitochondrial enzyme aconitase, which may decrease in oxidative stress (15). Interestingly, there was a significant increase in aconitase activity in the *Mterf3* KO heart compared to control, both when normalized to total protein (Fig. 1E) or to the mitochondrial mass (measured as citrate synthase activity; *Mterf3* KO, 62 ± 2.1 vs. control, 53 ± 2.1 (mU/U), $p < 0.05$). Increased ROS production is associated with decomposition of polyunsaturated fatty acids, which leads

to the formation of reactive carbonyl species that can bind to protein (1). We used Western blotting and an antibody specific for protein binding of one such carbonyl species, malondialdehyde (MDA), and observed no difference between *Mterf3* KO and control hearts (Fig. 1F). Taken together, we found no evidence of oxidative stress in the *Mterf3* KO heart. Conversely, there were actually signs of reduced ROS production in the mitochondria of *Mterf3* KO hearts.

Increased SR Ca^{2+} cycling in *Mterf3* cardiomyocytes

Altered cellular Ca^{2+} handling is a central feature in cardiomyocytes from failing hearts. Cardiomyocytes from ~14-week-old control and MTERF3 KO mice were used to measure action potential-induced Ca^{2+} transients and cardiac cell shortening. Interestingly, Ca^{2+} transient amplitudes were notably larger in *Mterf3* KO cardiomyocytes compared to control at all pacing frequencies (Figs. 2A and 2B). Furthermore, the Ca^{2+} transient decay was faster in *Mterf3* KO cells at 0.5–1 Hz stimulation, as shown by a lower decay time constant (τ) (Fig. 2C). Application of 100 nM of the β -adrenergic agonist isoproterenol (ISO), together with 1 Hz stimulation, made Ca^{2+} transients larger and faster and the difference between control and *Mterf3* KO cardiomyocytes disappeared (Figs. 2B and 2C). An increased decay speed of the Ca^{2+} transient is mainly a result of enhanced Ca^{2+} uptake into the SR. Thus, a faster decay normally reflects an increased loading of Ca^{2+} into the SR. We therefore measured the SR Ca^{2+} load by briefly applying caffeine (10 mM) which activates the RyR2 and fully releases the SR Ca^{2+} . As expected, the SR Ca^{2+} load was higher in *Mterf3* KO than in control cardiomyocytes (Fig. 2D). An increased activity of the sympathetic nervous system has been associated with phosphorylation of RyR2 at Ser²⁸⁰⁸ (36). We used Western blotting to measure the relation between Ser²⁸⁰⁸ phosphorylated and total RyR2 and observed ~25% higher degree of phosphorylation in *Mterf3* KO than in control hearts (Fig. 2E).

FIG. 2. Cardiomyocyte Ca^{2+} cycling and contractility are enhanced in *Mterf3* KO. (A) Typical examples of cardiomyocyte Ca^{2+} transients in *Mterf3* KO and control at 1 Hz stimulation. Average data (\pm SEM) of Ca^{2+} transient amplitudes (**B**) and decay time constant (**C**) at 0.5 Hz, 1 Hz, and 3 Hz stimulation and in the presence of ISO (100 nM), respectively ($n \geq 16$ cells from 3 mice in all groups). (**D**) Amplitude of the caffeine (10 mM) triggered Ca^{2+} transient. (**E**) The relation of RyR2 phosphorylated at Ser²⁸⁰⁸ (pS²⁸⁰⁸) to total RyR2; average data from 3 control and 4 *Mterf3* KO hearts. Representative blots are shown above bars. (**F**) Cardiomyocyte size measured in confocal images. Average width and length of control cardiomyocytes set to 100%. Data from ≥ 21 cells from 3 mice. (**G**) Contractility measured as fractional shortening in percent of the resting cardiac cell length (FS %) at 0.5, 1, and 3 Hz stimulation and in the presence of ISO. * $p < 0.05$, *** $p < 0.001$.



Increased contractility and cell size in *Mterf3* KO cardiomyocytes

The size of cardiomyocytes was measured in confocal images. Consistent with a cardiac hypertrophy phenotype, the cardiomyocyte diameter and length were $\sim 30\%$ and $\sim 10\%$ larger in *Mterf3* KO as compared to control (Fig. 2F).

Contractility was assessed by measuring fractional shortening (FS%) of the cardiomyocytes. *Mterf3* KO cardiomyocytes displayed increased FS% relative to control when paced at 0.5–3 Hz but not in the presence of ISO (Fig. 2G). Using the same cells as for the contractility measurements, cardiac cell size (measured as the length of the cardiomyocyte long axis) was investigated.

Spontaneous Ca^{2+} release in *Mterf3* KO

Spontaneous Ca^{2+} release events (either in the form of spontaneously activated “aberrant” Ca^{2+} transients as in Fig. 3A or scattered localized Ca^{2+} releases as in Fig. 3B) were more prevalent in *Mterf3* KO cardiomyocytes than in control. When paced at 0.5 or 1 Hz, $\sim 13\%$ (3 out of 23 cells, from 3 mice) and $\sim 15\%$ (5 out of 34 cells, from 3 mice), respectively, of the *Mterf3*

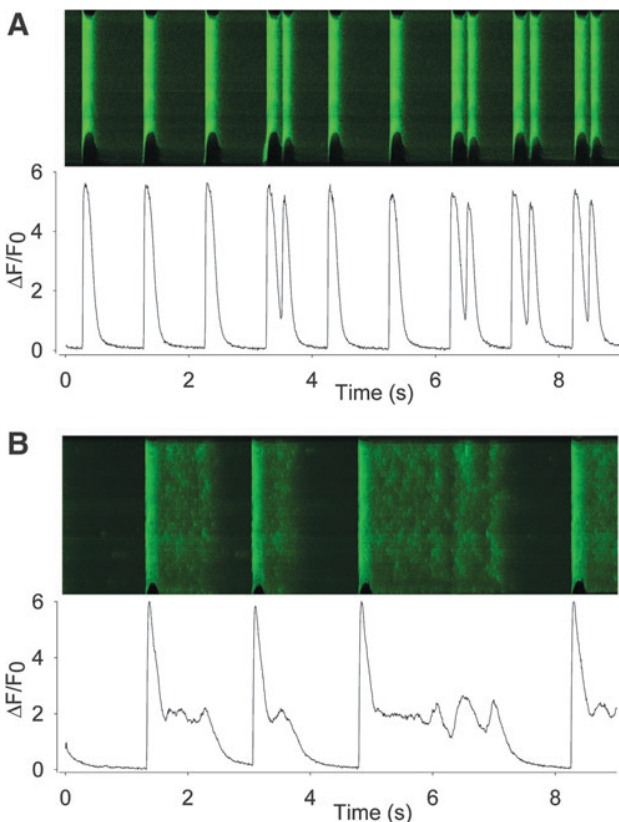


FIG. 3. Spontaneous Ca^{2+} release events in *Mterf3* KO cardiomyocytes. Pseudocolor line scans and fluorescence intensity graphs from *Mterf3* KO displaying aberrant Ca^{2+} release events: (A) doublet Ca^{2+} transients after ISO exposure (the cell was paced at 1 Hz); (B) spontaneous Ca^{2+} release events at 1 Hz stimulation without ISO. Note that in B, pacing-induced Ca^{2+} transients were intermittently absent in the presence of spontaneous Ca^{2+} release events. (To see this illustration in color the reader is referred to the web version of this article at www.liebertonline.com/ars).

KO cardiomyocytes displayed spontaneous Ca^{2+} release events. In control cardiomyocytes, such events occurred in no cells (0 out of 33, from 3 mice) during 0.5 Hz pacing and in $\sim 7\%$ of the cells (2 out of 30 cells, from 3 mice) during 1 Hz pacing. When cells were stressed by applying ISO, $\sim 43\%$ (23 out of 53 cells, from 3 mice) of the *Mterf3* KO cardiomyocytes displayed spontaneous Ca^{2+} events as compared to only $\sim 18\%$ (7 out of 40 cells, from 3 mice) in the control group.

Reduced heart rate variability and progressive AV-block in *Mterf3* KO

To capture changes in whole heart function, we performed long-term ECG measurements. Two phases were discerned in the *Mterf3* KO mice, a moribund stage, starting around 24 hours prior to the endpoint and a pre-moribund stage >24 hours before the endpoint (Figs. 4 and 5). In the pre-moribund stage, the *Mterf3* KO mice displayed similar R-R, P-R, and QRS times compared to control. On the other hand, the heart rate variability was lower in the *Mterf3* KO than in the control ($p < 0.001$; Fig. 4D). Spectral analysis of the *Mterf3* KO heart rate variability in the pre-moribund stage revealed a diminished low frequency (LF) power density and a slightly increased high frequency (HF) power density compared to control (Fig. 4E). Thus, the quotient between LF and HF (LF/HF) was substantially decreased (Fig. 4E).

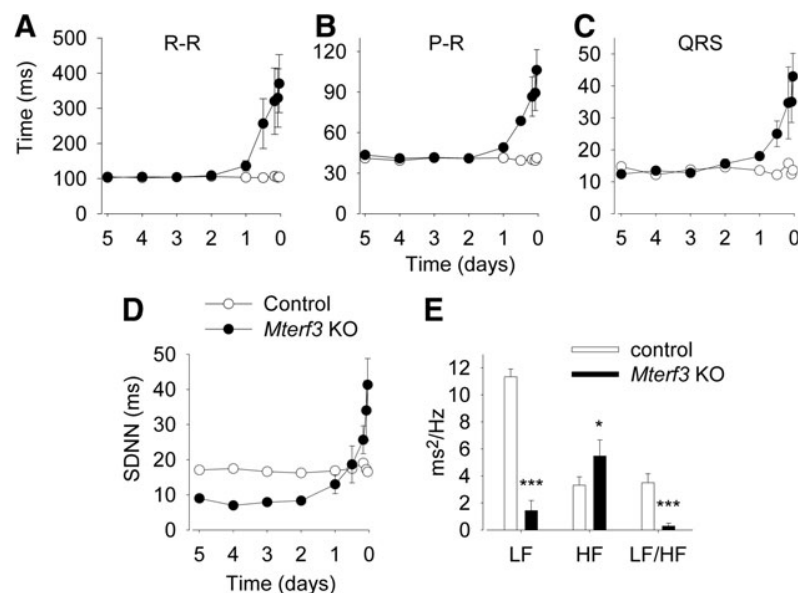
Towards the end of the lifespan of *Mterf3* KO mice, we noted a gradually developing bradycardia with increasing R-R, P-R, and QRS times (Figs. 4A–4C). The original ECG records in Figure 5 show increasing AV conduction times in *Mterf3* KO mice, which developed into a complete AV-block 30 min before the endpoint (Fig. 5D). Furthermore, at the start of the moribund stage, we noted a progressive decline in core body temperature in all the *Mterf3* KO mice from $\sim 35^\circ\text{C}$ to 25°C . Also, locomotor activity in the *Mterf3* KO was reduced by $\sim 75\%$ compared to the control.

Discussion

We have studied muscle-specific *Mterf3* KO mice, a model of mitochondrial cardiomyopathy with a partly unexpected phenotype consisting of: 1) no signs of increased mitochondrial ROS production or oxidative stress; 2) SR Ca^{2+} overload and enhanced cellular Ca^{2+} cycling; 3) reduced heart rate variability and collapsed low frequency spectrum indicating increased sympathetic drive; and 4) terminal progressive bradycardia ending with a complete AV-block.

Mterf3 ablation in the mouse heart leads to respiratory chain failure and increased mitochondrial mass (31), consistent with the findings in humans with mitochondrial cardiomyopathy. It has been suggested that respiratory chain dysfunction in mitochondrial diseases would lead to an increase in ROS production and oxidative stress (13). However, our results show no signs of increased ROS or oxidative stress in *Mterf3* KO hearts. Aconitase activity decreases under oxidative stress (15) and we saw an increase in the activity in *Mterf3* KO hearts. SOD2 expression has been shown to be increased in oxidative stress (40) but SOD2 mRNA and protein expression was unchanged in *Mterf3* KO hearts. Increased ROS production is associated with increased MDA protein binding (1), but we observed no difference between *Mterf3* KO and control hearts in this respect. Also, MitoSOX Red fluorescence was diminished in *Mterf3* KO cardiomyocytes after

FIG. 4. ECG changes in *Mterf3* KO mice. ECG recordings in *Mterf3* KO mice during 5 days prior to the endpoint (*Mterf3* KO, ●, $n=3$; control mice followed during the same time period, ○, $n=3$). R-R time (A), P-R time (B), and QRS time (C). (D) Heart rate variability, measured as the standard deviation of all normal R-R intervals (SDNN). (E) Frequency domain analysis of heart rate variability 48 hours before endpoint of *Mterf3* KO. Powers of the low frequency (LF, 0.15–1.5 Hz), high frequency (HF, 1.5–5 Hz) and the quotient between LF and HF (LF/HF). * $p < 0.05$, *** $p < 0.001$.



inducing product inhibition of SOD, indicating that mitochondrial $O_2^{\cdot-}$ production was, if anything, lower in *Mterf3* KO. Reduced $O_2^{\cdot-}$ production and absence of oxidative stress were recently shown in a different model of respiratory chain deficiency, the *Tfam* skeletal muscle KO (3). These results corroborate what has been found in two aging models, which develop mitochondrial respiratory chain dysfunction and fail to show an increase in ROS production or ROS induced cell damage (21, 45). Thus, several pieces of evidence are now accumulating against the view that mitochondrial dysfunction mandatorily leads to increased ROS production. In fact, it might be argued that impaired respiratory chain function is correlated with decreased mitochondrial ROS production based on our present and previously published findings (3).

In end-stage cardiomyopathy and heart failure, cardiomyocytes typically exhibit decreased SR Ca^{2+} cycling properties with reduction in SR Ca^{2+} release during systole and slowed SR Ca^{2+} uptake in diastole (37). Surprisingly, cardi-

omyocytes obtained from *Mterf3* KO mice before the moribund stage displayed increased amplitudes and faster decay of the Ca^{2+} transients, along with improved contractility. Moreover, SR Ca^{2+} load was elevated and the extent of RyR2 Ser²⁸⁰⁸ phosphorylation was increased. These findings are in line with what is seen during β -adrenergic stimulation (4, 36) and the difference between *Mterf3* KO and control cells disappeared when ISO was applied. Larger and faster Ca^{2+} transients and increased contractility have also been seen in cardiomyocytes of a genetic mouse model where the SR-associated protein junctin was ablated (51). Similar to *Mterf3* KO hearts, the junctin-deficient hearts displayed elevated SR Ca^{2+} load compared to controls, and the difference in contractile parameters and Ca^{2+} transient amplitude vanished in the presence of ISO. Larger and faster Ca^{2+} transients, increased SR Ca^{2+} load, and increased contractility have also been observed in cardiomyocytes from a mouse model of early congestive heart failure following myocardial infarction (30). Thus, an initial phase, where increased Ca^{2+} cycling serves as an adaptive mechanism to sustain cardiac pumping function, is observed subsequent to several perturbations of the heart.

The kinetics of mitochondrial Ca^{2+} uptake are uncertain, but the results of many studies indicate microdomains with close proximity between mitochondria and SR Ca^{2+} release sites where a fast mitochondrial Ca^{2+} uptake may occur (25). Mitochondrial Ca^{2+} uptake may then act as a buffer and reduce the size of cytosolic Ca^{2+} transients (25). Compared to controls, cardiomyocytes of *Mterf3* KO mice have a markedly higher mitochondrial content (31) and their mitochondrial Ca^{2+} uptake may then be larger, which would tend to decrease the size of cytosolic Ca^{2+} transients. In this study, we did not measure mitochondrial Ca^{2+} , but our results show larger and faster Ca^{2+} transients in *Mterf3* KO cardiomyocytes as compared to controls. Thus, if an increased mitochondrial Ca^{2+} uptake were present in *Mterf3* KO cardiomyocytes, this was not large enough to counteract other factors acting towards increased Ca^{2+} transients.

Increased SR Ca^{2+} load and cycling is beneficial for improving the contractile performance. However, elevated SR

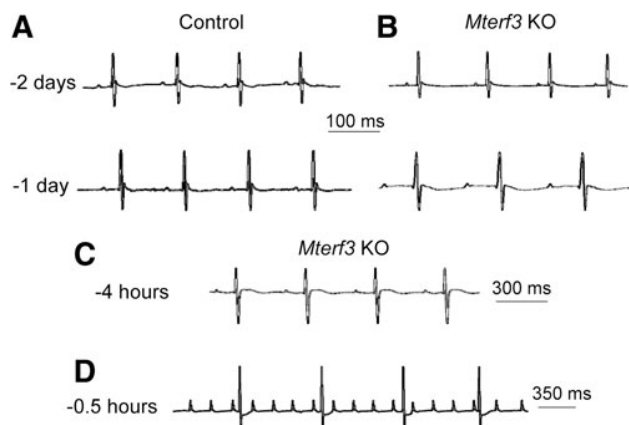


FIG. 5. Gradually developing AV-block and bradycardia in *Mterf3* KO hearts. Representative ECG records from control (A) and *Mterf3* KO mice (B–D). Times to the right of records indicate times before the endpoint. Note the different time bars in A and B compared to C and D.

Ca²⁺ load can trigger spontaneous Ca²⁺ release events through increased opening of the SR Ca²⁺ release channels, which can lead to triggered arrhythmias and thereby a risk of offsetting the benefits of increased contractility (10, 35, 51). In this context, the positive effects of enhanced Ca²⁺ release and inotropy in the *Mterf3* KO cardiomyocytes are accompanied by a high prevalence of spontaneous Ca²⁺ release events.

Stimulation of β -adrenergic receptors through increased drive of the sympathetic nervous system is the principal signaling to elicit increased Ca²⁺ cycling and inotropy (4). It is therefore assumed that the increased sympathetic drive commonly found in humans as well as in animal models of cardiomyopathy and heart failure (manifested as higher levels of catecholamines in the blood and decreased heart rate variability) constitutes the key signal by which the organism tries to compensate for the failing cardiac output. Chronic increase in sympathetic drive can, however, aggravate the cardiomyopathy phenotype and show strong correlation with premature mortality and sudden cardiac death in heart failure (8, 9, 28). In the *Mterf3* KO mice, we found evidence of elevated sympathetic signaling in the pre-moribund stage, indicated by cardiomyocytes showing a decreased response to ISO and an increased RyR2 Ser²⁸⁰⁸ phosphorylation (see Fig. 2) and by drastically reduced heart rate variability (see Fig. 4D). Moreover, spectral analysis of the heart rate variability revealed a collapsed LF power spectrum and a low LF/HF ratio (see Fig. 4E). In normal physiology, an increased sympathetic drive is sometimes associated with elevated LF and reduced HF components (41). However, in cardiac failure, the markedly excited sympathetic drive is typically followed by a dramatic decrease in LF power spectrum (19, 46). These data are, thus, consistent with a picture of chronic adrenergic stress in *Mterf3* KO mice.

Morphological remodeling of the heart and cardiomyocytes, which occurs in cardiac hypertrophic diseases, is another phenomenon that poses restraints on cardiac contractile function (27). *Mterf3* KO mice display cardiac hypertrophy (31) with increased width and length of cardiomyocytes (Fig. 2E). Cardiac failure is sometimes associated with alterations in transverse tubular structure. This may affect Ca²⁺ release synchrony, due to reduced juxtaposition between L-type Ca²⁺ channels and RyR, resulting in slowed Ca²⁺ transients (24). However, in *Mterf3* KO cardiomyocytes, pacing-induced Ca²⁺ transients are larger and faster and the initiation of Ca²⁺ release is synchronous, even in cells showing aberrant Ca²⁺ releases (see Fig. 3), which speaks against adverse alterations in transverse tubular structure.

During the moribund stage, the *Mterf3* KO mice show a progressive bradycardia due to an increasing AV conduction time and a terminal complete AV-block (Fig. 5). AV-block in mitochondrial cardiomyopathy is part of the features seen in the Kearns-Sayre syndrome (2, 22). In the cardiac respiratory chain-deficient *Tfam* KO mice, heart enlargement and ventricular dilatation was coupled with AV-block (48). Moreover, AV-block is described in cardiomyopathies of other types than primary mitochondrial cardiomyopathy (7, 32). The role of mitochondria in the cellular mechanisms underlying AV-block is elusive. However, the presence of AV-block in experimental models of mitochondrial cardiomyopathy, such as the *Mterf3* KO and the *Tfam* KO (48) as well as in patients with mitochondrial disease (2, 22), suggests a role of the mitochondria in the cellular mechanisms of AV-block.

In conclusion, we show that mitochondrial dysfunction can lead to cardiomyopathy with a complex arrhythmogenic

phenotype with spontaneous Ca²⁺ release events occurring at the level of the cardiomyocyte and terminal conduction system defects causing AV-block. These phenomena appear in the context of increased adrenergic signaling and enhanced cardiomyocyte Ca²⁺ cycling. This highlights the role of mitochondria in the early phase of cardiomyopathic disease, characterized by activation of adrenergic signaling and elevated risk of premature death.

Materials and Methods

Animals

Mice with tissue-specific ablation of *Mterf3* the *Mterf3*^{loxP/loxP}; +/*Ckmm-cre* (*Mterf3* KO), and littermate controls *Mterf3*^{loxP/loxP} (control) were generated as described elsewhere (31). Mice were killed by cervical dislocation, and hearts excised. The investigation conforms to the *Guide for the Care and Use of Laboratory Animals* published by the US National Institutes of Health (NIH Publication No. 85-23, revised 1996). All animal experiments were approved by the Stockholm North and South local animal ethics committees.

Cardiomyocyte isolation

Isolation of cardiomyocytes was done according to protocols of the Alliance for Cellular Signalling (AfCS Procedure Protocol ID PP00000 125) (34) and has been described elsewhere (42). Cardiomyocytes were isolated from ~14-week-old *Mterf3* KO and control mice. Cardiomyocytes were loaded with fluorescent indicators (see below) and placed on laminin-coated coverslips that made up the bottom of the perfusion chamber. Cells were allowed to attach to the coverslip for ~5 min before the start of experiments. The cells were then superfused with Tyrode solution (in mM): 121 NaCl, 5.0 KCl, 1.8 CaCl₂, 0.5 MgCl₂, 0.4 NaH₂PO₄, 24 NaHCO₃, 0.1 EDTA, and 5.5 glucose. The Tyrode solution was bubbled with 5% CO₂/95% O₂, which gives a bath pH of 7.4, and experiments were performed at room temperature (~24°C). Cells were continuously stimulated at 0.5 Hz, 1 Hz, or 3 Hz with 1-ms current pulses delivered via two platinum electrodes, one on each side of the perfusion chamber. Measurements were only performed on rod-shaped cells that displayed a uniform contraction in response to each stimulation pulse and showed no spontaneous contractile activity.

Confocal imaging of cytoplasmic Ca²⁺ and shortening in isolated cardiomyocytes

Confocal microscopy was performed using a Bio-Rad (Hercules, CA) MRC 1024 unit attached to a Nikon Diaphot inverted microscope with a Nikon Plan Apo 40x oil immersion objective (NA 1.3) (14). Cytoplasmic Ca²⁺ in isolated cardiomyocytes was measured with the fluorescent Ca²⁺ indicator fluo-3 and confocal images were obtained by line scanning along the long axis. Images were analyzed off line with ImageJ (National Institutes of Health [available at <http://rsb.info.nih.gov/ij>; accessed April 7, 2011]). To enable comparisons between cells, changes in the fluo-3 fluorescence signal (ΔF) were divided by the fluorescence immediately before a stimulation pulse was given under control conditions (F_0). The decay of the Ca²⁺ transients was assessed by measuring the time constant (τ) of the exponential part of the decay phase, ignoring the initial phase that often diverges

from a monoexponential function (11). Cell shortening was determined simultaneously with measurements of Ca^{2+} by following the edges of the fluorescence images of the cells during contractions. The cell length was measured in the rested state and the maximally contracted state, and fractional shortening (FS%) was defined as: $((\text{relaxed cell length} - \text{contracted cell length}) / (\text{relaxed cell length})) * 100$. Measurements of Ca^{2+} transients and cell shortening on exposure to the β -adrenergic agonist isoproterenol (ISO; 100 nM) were done within 4–10 min after application of the drug. Presence of spontaneous Ca^{2+} events during line scan was defined as either: 1) the presence of at least one spontaneously activated “aberrant” Ca^{2+} transient; 2) > 5 localized increases in fluorescence that is larger than 2 standard deviations of the surrounding fluorescence at the same time point. Line scans that displayed spontaneous Ca^{2+} events was not included in the measurements of Ca^{2+} transient amplitude and decay, or cell shortening.

Confocal imaging of mitochondrial ROS production

Changes in mitochondrial $\text{O}_2^{\cdot -}$ production were monitored using MitoSOX Red (Invitrogen/Molecular Probes, Eugene, OR) (14). Isolated cardiomyocytes were incubated with MitoSOX Red (5 μM) for 30 min at room temperature and experiments started after 5 min of washing. MitoSOX Red was excited at 488 nm and emitted light collected through a 585 nm long-pass filter. A confocal image of cardiomyocytes at rest was obtained to get a starting point of MitoSOX Red fluorescence. Thereafter, myocytes were continuously paced at 1 Hz and images were taken. After 15 min of pacing, 1 mM H_2O_2 was applied to induce product inhibition of superoxide dismutase 2 (SOD2) (17, 29) and fluorescence was measured at regular intervals for as long as the cardiomyocyte was viable. The fluorescent signal at all time points was normalized to the signal at the starting point.

Confocal imaging of mitochondrial membrane potential

Tetramethylrhodamine ethyl ester (TMRE; Invitrogen/Molecular Probes) was used to measure mitochondrial membrane potential ($\Delta\Psi_m$) (12, 14). Isolated cardiomyocytes were loaded with 10 nM TMRE for 15 min at room temperature, followed by washout. Confocal images of TMRE fluorescence were obtained by excitation at 568 nm while measuring the emitted light at 585 nm. The cells were continuously stimulated at 1 Hz. Images were taken every 2–3 min. After 15 min, cells were exposed to the mitochondrial uncoupler carbonyl cyanide 4-(trifluoromethoxy)phenylhydrazone (FCCP) (1 μM) to determine the dynamic range of the dye. Measurements were done in the same cell regions at each time point. Fluorescence signals obtained from mitochondria-rich areas were divided by fluorescence from an adjacent cytosolic region. The ratio thereby obtained for each time point was normalized to the point where the mitochondrial depolarizing effect of FCCP reached its maximum.

Northern blot analysis on SOD2 mRNA expression

RNA from hearts of ~12-week-old *Mterf3* KO and control mice was isolated using the TRIzol Reagent (Invitrogen/GIBCO-BRL Life Technologies). DNA probes specific to the genes of interest were labeled with [α - ^{32}P]-dCTP by using random primer extension method. Phosphorimager analysis of Northern

blots was used to assess levels of transcripts in comparison to the nuclear 18S rRNA levels as described previously (39).

Aconitase and citrate synthase activity

Measurements of aconitase activity was performed using isolated mitochondria from hearts of 12–16-week-old *Mterf3* KO and control mice according to a protocol described elsewhere (15). The activity of aconitase was normalized to the total protein content in the sample. Aconitase was also normalized to the citrate synthase (CS) activity and given the unit: mU aconitase activity / U CS activity (mU/U). CS activity was measured from the same sample (50).

Western blot analysis

Hearts of ~12-week-old mice were homogenized in ice-cold homogenization buffer pH 7.4 (20 μl per mg wet weight) consisting of (mM): 20 HEPES, 150 NaCl, 5 EDTA, 25 KF, 1 Na_3VO_4 ; 20% glycerol, 0.5% TritonX, protease inhibitor cocktail (Roche, Basel, Switzerland) 1 tablet/50 ml. The homogenate was centrifuged at 3000 g for 10 min at 4°C. Samples were diluted 1:2 in Laemmli buffer (Bio-Rad); for ryanodine receptor (RyR) and SOD2 analyses, samples were heated to 70°C 10 min. 30 μg were then loaded into each well and separated by electrophoresis using NuPAGE Novex 4%–12% Bis-Tris Gels (Invitrogen) and transferred onto polyvinylidene fluoride membranes (Immobilon FL, Millipore, Billerica, MA). Membranes were blocked for 1 hour at room temperature in LI-COR blocking buffer (LI-COR Biosciences, Lincoln, NE) and incubated with antibodies overnight at 4°C. All antibodies were diluted in blocking buffer and the following antibodies and dilutions were used: anti-phospho-RyR2-pSer²⁸⁰⁸ 1:2500 (gift from Andrew Marks, Columbia University College of Physicians & Surgeons, NY), anti-RyR2 total 1:1000 (5029, gift from Andrew Marks), anti-SOD2 1:1000 (06-984, Upstate, Lake Placid, NY), anti-malondialdehyde (MDA) 1:500 (MD20A-R1a, Academy Bio-Medical, Houston, TX). RyR2(pho-Ser2809) was stripped by incubating in 50 mM TrisBase, SDS 2%, pH 6.8 at 60°C for 40 min before incubating with anti-RyR total. Membranes were then washed 3X 5 min in TBS-T and incubated for 1 h at room temperature with IRDye 680 conjugated goat anti-mouse IgG and IRDye 800 conjugated goat anti-mouse IgG (1:15000, LI-COR) diluted in LI-COR blocking buffer with 0.01% SDS and 0.005% Tween20. Finally, membranes were washed for 4X 10 min in TBS-T. Immunoreactive bands were visualized using infrared fluorescence (IR-Odyssey scanner, LI-COR Biosciences) densitometric quantifications of band intensities were done using ImageJ (National Institutes of Health [available at <http://rsb.info.nih.gov/ij>]). Membranes were later stained with SimplyBlue Safe stain (Invitrogen) to assess protein loading of each well.

Telemetric ECG recordings

ECG, core body temperature, and locomotor activity recordings were performed on conscious, freely moving individually caged ~14-week-old *Mterf3* KO ($n=3$) and control mice ($n=3$) (18). The telemetry transmitter-receiver system (TA10ETA-F20; RPC-1) was connected to a data acquisition system (Data Science International, St. Paul, MN). Data were collected continuously (24 h/day) at a sampling rate of 1000 Hz until the endpoint in the *Mterf3* KO and for 14 days in the

control. Transmitters were implanted in the abdominal cavity during isoflurane anesthesia (~20 min). Two ECG electrodes were placed subcutaneously, one at the right shoulder (negative) and the other in the lower left chest region (positive) approximating the Einthoven lead II (20). ECG recordings were analyzed off line with the software ECG-auto (version 1.5.12.22, EMKA Technologies, Paris, France). The telemetric data were analyzed as described previously (43, 44).

Analysis of ECG recordings

ECG signals were digitally pass filtered between 0.1 and 1000 Hz and then analyzed during the night time period. R-R, P-R, and QRS intervals were calculated from 5 days prior to the endpoint of the *Mterf3* KO and compared to results obtained during the same period in the control. On the same records, heart rate variability (HRV) was calculated from the R-R values. The standard deviation of all normal R-R intervals (SDNN) was used as the measure for HRV. Moreover, power spectral analysis of the HRV was performed. One ECG period of 3 min was selected every 2 h during a period of low locomotor activity. The power spectra analysis was done using the fast Fourier transform (segment length 2048 beats, linear interpolation with re-sampling to a 20-Hz interbeat time series and Hamming windowing). The frequency range was divided into a low-frequency (LF) range (0.15–1.5 Hz) and a high-frequency (HF) range (1.5–5 Hz) (43, 44).

Statistics

For comparisons between two independent data groups, unpaired Student's *t*-test was used. When more than two groups were compared, analysis of variance (ANOVA) was used, followed by an appropriate *post hoc* test. Significance level was set to $P < 0.05$. SigmaStat (version 3.1, Systat Software, Point Richmond, CA) was used for statistical computations. Data are expressed as average \pm standard error of the mean (SEM) unless stated otherwise.

Acknowledgments

We thank Professor Anders Arner and Dr. Rolf Wibom for valuable technical assistance. Whole animal physiology experiments were performed in the Genetic Physiology Core Facility at Karolinska Institutet. Funds from the following sources were used to support this work: Swedish Heart Lung Foundation; Swedish Research Council; Lars Hierta Memorial Foundation; Sigurd och Elsa Goljes Memorial Foundation; Association Française contre les Myopathies (AFM), and Funds at the Karolinska Institute.

Author Disclosure Statement

No competing financial interests exist.

References

- Aldini G, Dalle-Donne I, Facino RM, Milzani A, and Carini M. Intervention strategies to inhibit protein carbonylation by lipoxidation-derived reactive carbonyls. *Med Res Rev* 27: 817–868, 2007.
- Anan R, Nakagawa M, Miyata M, Higuchi I, Nakao S, Suehara M, Osame M, and Tanaka H. Cardiac involvement in mitochondrial diseases. A study on 17 patients with documented mitochondrial DNA defects. *Circulation* 91: 955–961, 1995.
- Aydin J, Andersson DC, Hanninen SL, Wredenberg A, Tavi P, Park CB, Larsson NG, Bruton JD, and Westerblad H. Increased mitochondrial Ca^{2+} and decreased sarcoplasmic reticulum Ca^{2+} in mitochondrial myopathy. *Human Mol Genet* 18: 278–288, 2009.
- Bers DM. Cardiac excitation–contraction coupling. *Nature* 415: 198–205, 2002.
- Bers DM. Altered cardiac myocyte Ca regulation in heart failure. *Physiology (Bethesda)* 21: 380–387, 2006.
- Bristow MR, Ginsburg R, Minobe W, Cubicciotti RS, Sageman WS, Lurie K, Billingham ME, Harrison DC, and Stinson EB. Decreased catecholamine sensitivity and beta-adrenergic-receptor density in failing human hearts. *New Engl J Med* 307: 205–211, 1982.
- Cicek D, Camsari A, and Doven O. Familial hypertrophic cardiomyopathy complicated by complete atrioventricular block. *Acta Cardiol* 59: 71–74, 2004.
- Clark AL, and Cleland JG. The control of adrenergic function in heart failure: Therapeutic intervention. *Heart Fail Rev* 5: 101–114, 2000.
- Curran J, Hinton MJ, Rios E, Bers DM, and Shannon TR. Beta-adrenergic enhancement of sarcoplasmic reticulum calcium leak in cardiac myocytes is mediated by calcium/calmodulin-dependent protein kinase. *Circ Res* 100: 391–398, 2007.
- Diaz ME, Graham HK, O'Neill SC, Trafford AW, and Eisner DA. The control of sarcoplasmic reticulum Ca content in cardiac muscle. *Cell Calcium* 38: 391–396, 2005.
- Diaz ME, Trafford AW, and Eisner DA. The role of intracellular Ca buffers in determining the shape of the systolic Ca transient in cardiac ventricular myocytes. *Pflügers Arch* 442: 96–100, 2001.
- Duchen MR, Leyssens A, and Crompton M. Transient mitochondrial depolarizations reflect focal sarcoplasmic reticulum calcium release in single rat cardiomyocytes. *J Cell Biol* 142: 975–988, 1998.
- Esposito LA, Melov S, Panov A, Cottrell BA, and Wallace DC. Mitochondrial disease in mouse results in increased oxidative stress. *Proc Natl Acad Sci USA* 96: 4820–4825, 1999.
- Fauconnier J, Andersson DC, Zhang SJ, Lanner JT, Wibom R, Katz A, Bruton JD, and Westerblad H. Effects of palmitate on Ca^{2+} handling in adult control and *ob/ob* cardiomyocytes: Impact of mitochondrial reactive oxygen species. *Diabetes* 56: 1136–1142, 2007.
- Gardner PR. Aconitase: Sensitive target and measure of superoxide. *Methods Enzymol* 349: 9–23, 2002.
- Gwathmey JK, Copelas L, MacKinnon R, Schoen FJ, Feldman MD, Grossman W, and Morgan JP. Abnormal intracellular calcium handling in myocardium from patients with end-stage heart failure. *Circ Res* 61: 70–76, 1987.
- Hearn AS, Tu C, Nick HS, and Silverman DN. Characterization of the product-inhibited complex in catalysis by human manganese superoxide dismutase. *J Biol Chem* 274: 24457–24460, 1999.
- Johansson C and Thoren P. The effects of triiodothyronine (T_3) on heart rate, temperature and ECG measured with telemetry in freely moving mice. *Acta Physiol Scand* 160: 133–138, 1997.
- Kienzle MG, Ferguson DW, Birkett CL, Myers GA, Berg WJ, and Mariano DJ. Clinical, hemodynamic and sympathetic neural correlates of heart rate variability in congestive heart failure. *Am J Cardiol* 69: 761–767, 1992.
- Kramer K, van Acker SA, Voss HP, Grimbergen JA, van der Vijgh WJ, and Bast A. Use of telemetry to record electro-

- cardiogram and heart rate in freely moving mice. *J Pharmacol Toxicol Methods* 30: 209–215, 1993.
21. Kujoth GC, Hiona A, Pugh TD, Someya S, Panzer K, Wohlgemuth SE, Hofer T, Seo AY, Sullivan R, Jobling WA, Morrow JD, Van Remmen H, Sedivy JM, Yamasoba T, Tanokura M, Weindruch R, Leeuwenburgh C, and Prolla TA. Mitochondrial DNA mutations, oxidative stress, and apoptosis in mammalian aging. *Science* 309: 481–484, 2005.
 22. Larsson NG and Oldfors A. Mitochondrial myopathies. *Acta Physiol Scand* 171: 385–393, 2001.
 23. Litwin SE, Zhang D, and Bridge JH. Dyssynchronous Ca²⁺ sparks in myocytes from infarcted hearts. *Circ Res* 87: 1040–1047, 2000.
 24. Louch WE, Sejersted OM, and Swift F. There goes the neighborhood: Pathological alterations in T-tubule morphology and consequences for cardiomyocyte Ca²⁺ handling. *J Biomed Biotechnol* 2010: 503906, 2010.
 25. Maack C and O'Rourke B. Excitation-contraction coupling and mitochondrial energetics. *Basic Res Cardiol* 102: 369–392, 2007.
 26. Marin-Garcia J and Goldenthal MJ. Mitochondrial centrality in heart failure. *Heart Fail Rev* 13: 137–150, 2008.
 27. Maron BJ. Hypertrophic cardiomyopathy. *Lancet* 350: 127–133, 1997.
 28. Marx SO, Reiken S, Hisamatsu Y, Jayaraman T, Burkhoff D, Rosemblyt N, and Marks AR. PKA phosphorylation dissociates FKBP12.6 from the calcium release channel (ryanodine receptor): Defective regulation in failing hearts. *Cell* 101: 365–376, 2000.
 29. McAdam ME, Levelle F, Fox RA, and Fielden EM. A pulse-radiolysis study of the manganese-containing superoxide dismutase from *Bacillus stearothermophilus*. *Biochem J* 165: 81–87, 1977.
 30. Mørk HK, Sjaastad I, Sande JB, Periasamy M, Sejersted OM, and Louch WE. Increased cardiomyocyte function and Ca²⁺ transients in mice during early congestive heart failure. *J Mol Cell Cardiol* 43: 177–186, 2007.
 31. Park CB, Asin-Cayuela J, Camara Y, Shi Y, Pellegrini M, Gaspari M, Wibom R, Hultenby K, Erdjument-Bromage H, Tempst P, Falkenberg M, Gustafsson CM, and Larsson NG. MTERF3 is a negative regulator of mammalian mtDNA transcription. *Cell* 130: 273–285, 2007.
 32. Rosen KL, Cameron RW, Bigham PJ, and Neish SR. Hypertrophic cardiomyopathy presenting with 3rd-degree atrioventricular block. *Tex Heart Inst J* 24: 372–375, 1997.
 33. Rossignol R, Letellier T, Malgat M, Rocher C, and Mazat JP. Tissue variation in the control of oxidative phosphorylation: Implication for mitochondrial diseases. *Biochem J* 347: 45–53, 2000.
 34. Sambrano GR, Fraser I, Han H, Ni Y, O'Connell T, Yan Z, and Stull JT. Navigating the signalling network in mouse cardiac myocytes. *Nature* 420: 712–714, 2002.
 35. Satoh H, Blatter LA, and Bers DM. Effects of [Ca²⁺]_i, SR Ca²⁺ load, and rest on Ca²⁺ spark frequency in ventricular myocytes. *Am J Physiol* 272: H657–H668, 1997.
 36. Shan J, Kushnir A, Betzenhauser MJ, Reiken S, Li J, Lehnart SE, Lindegger N, Mongillo M, Mohler PJ, and Marks AR. Phosphorylation of the ryanodine receptor mediates the cardiac fight or flight response in mice. *J Clin Invest* 120: 4388–4398, 2010.
 37. Shannon TR and Bers DM. Integrated Ca²⁺ management in cardiac myocytes. *Ann NY Acad Sci* 1015: 28–38, 2004.
 38. Smeitink J, van den HL, and DiMauro S. The genetics and pathology of oxidative phosphorylation. *Nat Rev Genet* 2: 342–352, 2001.
 39. Sørensen L, Ekstrand M, Silva JP, Lindqvist E, Xu B, Rustin P, Olson L, and Larsson NG. Late-onset corticohippocampal neurodepletion attributable to catastrophic failure of oxidative phosphorylation in MILON mice. *J Neurosci* 21: 8082–8090, 2001.
 40. St Pierre J, Drori S, Uldry M, Silvaggi JM, Rhee J, Jager S, Handschin C, Zheng K, Lin J, Yang W, Simon DK, Bachoo R, and Spiegelman BM. Suppression of reactive oxygen species and neurodegeneration by the PGC-1 transcriptional coactivators. *Cell* 127: 397–408, 2006.
 41. Task Force of the European Society of C. Heart rate variability. Standards of measurement, physiological interpretation, and clinical use. *Eur Heart J* 17: 354–381, 1996.
 42. Tavi P, Hansson A, Zhang SJ, Larsson NG, and Westerblad H. Abnormal Ca²⁺ release and catecholamine-induced arrhythmias in mitochondrial cardiomyopathy. *Hum Mol Genet* 14: 1069–1076, 2005.
 43. Thireau J, Poisson D, Zhang BL, Gillet L, Le Pecheur M, Andres C, London J, and Babuty D. Increased heart rate variability in mice overexpressing the Cu/Zn superoxide dismutase. *Free Radic Biol Med* 45: 396–403, 2008.
 44. Thireau J, Zhang BL, Poisson D, and Babuty D. Heart rate variability in mice: A theoretical and practical guide. *Exp Physiol* 93: 83–94, 2008.
 45. Trifunovic A, Wredenberg A, Falkenberg M, Spelbrink JN, Rovio AT, Bruder CE, Bohlooly Y, Gidlof S, Oldfors A, Wibom R, Tornell J, Jacobs HT, and Larsson NG. Premature ageing in mice expressing defective mitochondrial DNA polymerase. *Nature* 429: 417–423, 2004.
 46. van de Borne P, Montano N, Pagani M, Oren R, and Somers VK. Absence of low-frequency variability of sympathetic nerve activity in severe heart failure. *Circulation* 95: 1449–1454, 1997.
 47. Wallace DC. A mitochondrial paradigm of metabolic and degenerative diseases, aging, and cancer: A dawn for evolutionary medicine. *Annu Rev Genet* 39: 359–407, 2005.
 48. Wang J, Wilhelmsson H, Graff C, Li H, Oldfors A, Rustin P, Bruning JC, Kahn CR, Clayton DA, Barsh GS, Thoren P, and Larsson NG. Dilated cardiomyopathy and atrioventricular conduction blocks induced by heart-specific inactivation of mitochondrial DNA gene expression. *Nat Genet* 21: 133–137, 1999.
 49. Wehrens XH, Lehnart SE, and Marks AR. Intracellular calcium release and cardiac disease. *Annu Rev Physiol* 67: 69–98, 2005.
 50. Wibom R, Hagenfeldt L, and von Döbeln U. Measurement of ATP production and respiratory chain enzyme activities in mitochondria isolated from small muscle biopsy samples. *Anal Biochem* 311: 139–151, 2002.
 51. Yuan Q, Fan GC, Dong M, Altschaff B, Diwan A, Ren X, Hahn HH, Zhao W, Waggoner JR, Jones LR, Jones WK, Bers DM, Dorn GW, Wang HS, Valdivia HH, Chu G, and Kranias EG. Sarcoplasmic reticulum calcium overloading in junctin deficiency enhances cardiac contractility but increases ventricular automaticity. *Circulation* 115: 300–309, 2007.

Address correspondence to:

Prof. Håkan Westerblad

Department of Physiology and Pharmacology

Karolinska Institutet

von Eulers väg 8

SE-171 77 Stockholm

Sweden

E-mail: hakan.westerblad@ki.se

Abbreviations Used

$\Delta\Psi_m$ = mitochondrial membrane potential
ANOVA = analysis of variance
AV-block = atrioventricular conduction block
CS = citrate synthase
ECG = electrocardiography
FCCP = carbonyl cyanide 4-(trifluoromethoxy)
phenylhydrazone
FS = fractional shortening
HF = high-frequency
HRV = heart rate variability
ISO = isoproterenol
LF = low-frequency
MDA = malondialdehyde

mtDNA = mitochondrial DNA
MTERF3 = mitochondrial transcription termination
factor 3
POLRMT = mitochondrial RNA polymerase
ROS = reactive oxygen species
RyR = ryanodine receptor
SDNN = standard deviation of all normal R-R
intervals
SEM = standard error of the mean
SOD = superoxide dismutase
SR = sarcoplasmic reticulum
Tfam = mitochondrial transcription factor A
TFB1M = mitochondrial transcription factor B1
TFB2M = mitochondrial transcription factor B2
TMRE = tetramethylrhodamine ethyl ester