



Prognostic relevance of RIP140 and ER β expression in unifocal versus multifocal breast cancers: a preliminary report

Katharina Müller, Sophie Sixou, Christina Kuhn, Stéphan Jalaguier, Doris Mayr, Nina Ditsch, Tobias Weissenbacher, Nadia Harbeck, Sven Mahner, Vincent Cavaillès, et al.

► To cite this version:

Katharina Müller, Sophie Sixou, Christina Kuhn, Stéphan Jalaguier, Doris Mayr, et al.. Prognostic relevance of RIP140 and ER β expression in unifocal versus multifocal breast cancers: a preliminary report. *International Journal of Molecular Sciences*, 2019, 20 (2), pp.418. 10.3390/ijms20020418 . hal-02413723v1

HAL Id: hal-02413723

<https://hal.umontpellier.fr/hal-02413723v1>

Submitted on 16 Dec 2019 (v1), last revised 16 Dec 2019 (v2)

HAL is a multi-disciplinary open access archive for the deposit and dissemination of scientific research documents, whether they are published or not. The documents may come from teaching and research institutions in France or abroad, or from public or private research centers.

L'archive ouverte pluridisciplinaire **HAL**, est destinée au dépôt et à la diffusion de documents scientifiques de niveau recherche, publiés ou non, émanant des établissements d'enseignement et de recherche français ou étrangers, des laboratoires publics ou privés.



Article

Prognostic Relevance of RIP140 and ER β Expression in Unifocal Versus Multifocal Breast Cancers: A Preliminary Report

Katharina Müller ^{1,†}, Sophie Sixou ^{1,2,†}, Christina Kuhn ¹, Stephan Jalaguier ³, Doris Mayr ⁴, Nina Ditsch ¹, Tobias Weissenbacher ¹, Nadia Harbeck ¹, Sven Mahner ¹, Vincent Cavaillès ^{3,‡} and Udo Jeschke ^{1,*}

¹ Department of Obstetrics and Gynecology, LMU Munich, University Hospital, 81377 Munich, Germany; kontakt@katharinamueller.net (K.M.); sophie.sixou@univ-tlse3.fr (S.S.); Christina.kuhn@med.uni-muenchen.de (C.K.); nina.ditsch@med.uni-muenchen.de (N.D.); tobias.weissenbacher@med.uni-muenchen.de (T.W.); nadia.harbeck@med.uni-muenchen.de (N.H.); sven.mahner@med.uni-muenchen.de (S.M.)

² Faculté des Sciences Pharmaceutiques, Université Paul Sabatier Toulouse III, 31062 Toulouse Cedex 09, France

³ IRCM, Institut de Recherche en Cancérologie de Montpellier, 34298 Montpellier, France; stephan.jalaguier@inserm.fr (S.J.); vincent.cavaillès@inserm.fr (V.C.)

⁴ Department of Pathology, LMU Munich, 80337 Munich, Germany; doris.mayr@med.uni-muenchen.de

* Correspondence: udo.jeschke@med.uni-muenchen.de; Tel.: +49-89-4400-74775

† These authors contributed equally as first authors.

‡ These authors contributed equally as senior authors.

Received: 9 November 2018; Accepted: 16 January 2019; Published: 18 January 2019



Abstract: The aim of this study was to investigate the expression of two nuclear receptor transcriptional coregulators, namely RIP140 (receptor-interacting protein of 140 kDa) and LCoR (ligand-dependent corepressor) in unifocal versus multifocal breast cancers. The expression of these two proteins was analyzed by immunohistochemistry in a matched-pair cohort of 21 unifocal and 21 multifocal breast tumors. The expression of the two estrogen receptors (ER α and ER β) was studied in parallel. RIP140 and LCoR levels appeared lower in unifocal tumors compared to multifocal samples (decreased of immune-reactive scores and reduced number of high expressing cells). In both tumor types, RIP140 and LCoR expression was correlated with each other and with expression of ER β . Very interestingly, the expression of RIP140, LCoR, and ER β was inversely correlated with overall survival only for the unifocal group. The negative correlation with overall and recurrence free survival was more pronounced in patients whose unifocal tumors expressed high levels of both RIP140 and ER β . Altogether, this preliminary report indicates that the ER β /RIP140 signaling is altered in unifocal breast cancers and correlated with patient outcome. Further investigation is needed to decipher the molecular mechanisms and the biological relevance of this deregulation.

Keywords: breast cancer; tumor focality; RIP140; LCoR; estrogen receptors

1. Introduction

The last decade provided clear evidence for the importance of focality regarding breast cancer (BC) aggressiveness [1,2]. Although a standard classification of focality status is still debated, multifocality was initially defined as two or more separate invasive tumors in the same quadrant and multicentricity as two or more separate invasive tumors in more than one quadrant of the same breast [3]. Nonetheless, since the quadrant definition is not linked to breast anatomy, the difference between multifocality and

multicentricity is becoming less and less important. More recently, multifocality has been defined as multiple simultaneous ipsilateral BC lesions, provided they are macroscopically distinct and measurable, irrespective of the localization of the lesions [4]. Multifocality has been associated with lymph node and distant metastases [5,6], with shorter survival [7], and higher mortality rates [8]. Our previous work demonstrated that multicentricity/multifocality was a significant independent predictor for local relapse, distant metastasis, and reduced overall survival (OS) [9]. This previous study emphasized the importance of the combined tumor volume rather than that of the larger tumor diameter. More recently, using a well-balanced matched-pair cohort, we demonstrated a significant lower expression of E-cadherin in the multifocal group [10].

Together with the tumor node metastasis (TNM) classification, the hormone receptor (estrogen receptor ER, progesterone receptor PR) and the HER2 receptor status are standard diagnostic parameters to describe tumor biology and support therapy decisions. For multifocal tumors, assessment of ER, PR, and HER2 status only in the largest lesion (if the lesions do not differ in grade or histological subtype) is still questionable, and an accurate biological characterization of all lesions should be recommended [4]. Regarding estrogen signaling, the expression ratio between ER α and ER β has a great effect on tumorigenesis in breast and ovarian cancers; ER β was shown to have inhibiting effects on ER α and thus on cell proliferation. ER β , especially the isoform 2, is expressed at a higher level than ER α in the normal human mammary gland, but its expression decreased in BC cells, particularly in ER α expressing cells [11,12].

BC signaling and progression is also influenced by the complex interplay of nuclear receptors and their transcriptional coactivators and corepressors [5]. The importance of nuclear receptors and coregulators networks which appear disrupted in BC and have prognostic significance was previously demonstrated [13]. RIP140 (receptor-interacting protein of 140 kDa) is one of the first transcriptional coregulators shown to interact with ERs [14] and to regulate BC cell proliferation and invasion in vitro [15–17]. RIP140 was found to be an important transcriptional cofactor for estrogen signaling in ovarian and BC cells [18,19]. The effect of RIP140 appeared stronger on ER β than on ER α (better in vitro interaction and greater modulation of estradiol-dependent transactivation) [20,21]. Moreover, RIP140 was shown to be more efficiently upregulated by estradiol in ER β expressing BC cells [22]. Finally, analysis of knock-out mice revealed that RIP140 is an essential factor for normal mammary gland development through its functions on estrogen signaling [23].

LCoR (ligand-dependent corepressor) is another transcriptional coregulator which interacts with agonist-activated ER α and represses its activity via histone deacetylase-dependent and independent mechanisms [24]. The physiological role of LCoR is poorly understood but biological effects on prostate cancer and liver homeostasis have been reported [25,26]. Previously, we reported that LCoR was engaged in a complex with RIP140 and negatively regulated BC cell proliferation in a RIP140-dependent manner [27]. Moreover, we recently analyzed RIP140 and LCoR expression at the protein level in BC biopsies showing that the two proteins were highly correlated in more than 80% of tumors and that RIP140 expression was significantly correlated with patient survival [28].

The present work analyzes the expression of RIP140 and LCoR in BC samples according to their focality status. We used a previously characterized, small but well-balanced matched-pair cohort of 42 unifocal and multifocal BC samples [10]. This cohort is homogenous for the two types of tumors in terms of tumor size, histology grade, lymph node status, and patient survival. Using immunohistochemistry, RIP140 and LCoR expression was monitored in parallel to that of ER α and ER β , and data were correlated with OS. The results highlight a highly significant negative prognostic impact of RIP140/ER β coexpression, only in unifocal tumors.

2. Results

2.1. RIP140 and LCoR Expression in Unifocal vs. Multifocal Tumors

Using immunohistochemistry, we evaluated RIP140 and LCoR expression on 21 matched pairs of unifocal or multifocal tumors described in Table 1.

Table 1. Clinicopathological features of the matched-pair cohort.

Parameters	Unifocal (n = 21)	Multifocal (n = 21)
Age		
Mean (years)	58.5	63.7
Histological type		
Ductal	13 (61.9%)	16 (71.4%)
Lobular	3 (14.3%)	4 (19%)
Ductal-Lobular	1 (4.8%)	2 (9.5%)
Medullary	1 (4.8%)	0 (0%)
Micropapillary	2 (9.5%)	0 (0%)
Unknown	1 (4.8%)	0 (0%)
Tumor size		
pT1 a, b, c	18 (85.7%)	18 (85.7%)
pT2	2 (9.5%)	2 (9.5%)
pT3	0 (0%)	0 (0%)
pT4a, b, c, d	1 (4.8%)	1 (4.8%)
Grade		
I	0 (0%)	0 (0%)
II	17 (81.0%)	17 (81.0%)
III	4 (19.0%)	4 (19.0%)
Lymph node metastasis		
No	16 (76.2%)	16 (76.2%)
Yes	4 (19%)	4 (19%)
Unknown	1 (4.8%)	1 (4.8%)
Local recurrence		
No	13 (61.9%)	17 (81%)
Yes	8 (38.1%)	4 (19%)
Overall survival		
Mean time (months)	130.79	133.41
ERα status		
Negative	5 (23.8%)	5 (23.8%)
Positive	16 (76.2%)	16 (76.2%)
ERβ status		
Negative	10 (47.6%)	5 (23.8%)
Positive	11 (52.4%)	16 (76.2%)
HER2 status		
Negative	18 (85.7%)	16 (76.2%)
Positive	3 (14.3%)	5 (23.8%)

Semi-quantitative immunoreactive scores (IRS) were quantified by assessing the percentage of positively stained cells together with staining intensity. Figure 1 illustrates RIP140 and LCoR staining results with low or high IRS, in unifocal and multifocal samples. The mean IRS of RIP140 and LCoR expression were compared in unifocal vs. multifocal tumors and found to be lower in the unifocal group compared to the multifocal one, with a significant difference only for LCoR.

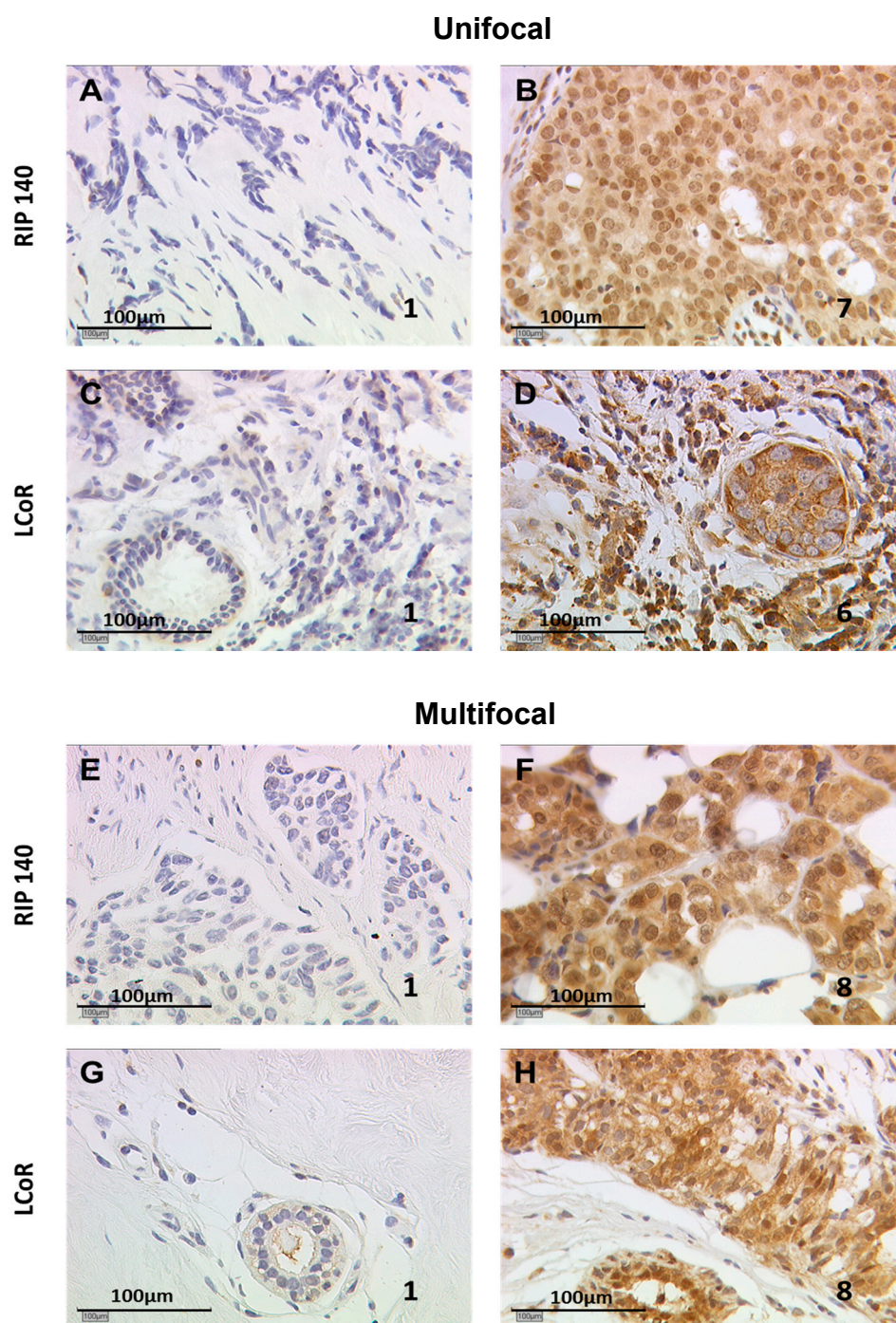


Figure 1. Immunohistological staining of receptor interacting protein of 140 kDa (RIP140) and ligand dependent corepressor (LCoR) in unifocal or multifocal breast cancers. RIP140 (A,B,E,F), and LCoR (C,D,G,H) expression was evaluated by immunohistochemistry in unifocal (A–D) and multifocal (E–H) cases. Positive staining appears in brown color, nuclei appear in blue. Examples of low expression (A,C,E,G) vs. high expression (B,D,F,H) have been selected (immunoreactive score (IRS) values indicated in each photograph).

As shown in Table 2, the mean IRS for RIP140 was 2.61 in the unifocal group vs. 2.98 in the multifocal, and for LCoR expression, 2.38 vs. 3.38, respectively ($p < 0.05$). Considering IRS values ≥ 3.25 as positive, the percentage of samples expressing low or high levels of each coregulator was analyzed in the two types of tumors, as shown in Table 2. The majority of the 42 tumors expressed low

levels of RIP140, and the percentage of RIP140 high expressing tumors decreased in the unifocal group (23.8% high expressing vs. 42.9% in the multifocal group). Similarly, the percentage of LCoR high expressing tumors decreased in the unifocal group (19% high expressing vs. 57.1% in the multifocal group, $p = 0.011$). Finally, a positive and significant correlation between RIP140 and LCoR expression was observed in the two tumor types ($p < 0.01$) confirming our previous observation [28].

Table 2. Distribution and correlation of RIP140 and LCoR expression in unifocal versus multifocal breast cancers.

Parameters	Unifocal (n = 21)	Multifocal (n = 21)
RIP140 expression		
Mean IRS \pm SE	2.61 \pm 1.74	2.98 \pm 2.12
Low expressing tumors n (%)	16 (76.2%)	12 (57.1%)
High expressing tumors n (%)	5 (23.8%)	9 (42.9%)
LCoR expression		
Mean IRS \pm SE	2.38 * \pm 1.49	3.38 \pm 1.93
Low expressing tumors n (%)	17 * (80.1%)	9 (42.9%)
High expressing tumors n (%)	4 * (19%)	12 (57.1%)
Correlation between RIP140 and LCoR		
Spearman's Rho correlation coefficient	0.714 **	0.686 **

The cut-off value between low and high expression is defined for RIP140 and LCoR as an IRS ≥ 3.25 . The difference or correlation are statistically significant for $p < 0.05$ (*) and for $p < 0.01$ (**), using mean or percentage bilateral analysis and Spearman's Rho test.

2.2. Correlation with Clinical and Biological Parameters

RIP140 and LCoR expression was then correlated with clinical parameters linked to tumor aggressiveness and prognosis. These parameters were the recurrence status, pT, pN, pM, grade, histology types (classified as ductal, lobular, ductal-lobular, medullary, micro papillary, as described in Table 1), as well as expression of the two ER (ER α and ER β), and HER2. No correlation was observed between RIP140 or LCoR, and most of the clinical and biological parameters analyzed, except for ER β , as shown in Table 3. Indeed, we observed positive and significant correlations between ER β and RIP140 or LCoR, both in unifocal and multifocal tumors. The correlations did not appear statistically different in unifocal cases ($r = 0.741$ and 0.783 , for RIP140 and LCoR, respectively) and multifocal tumors ($r = 0.699$ and 0.612 , respectively).

Table 3. Correlation analysis of RIP140 and LCoR expression with clinical parameters and estrogen receptor (ER) expression in unifocal versus multifocal breast cancers.

	RIP140		LCoR	
	Unifocal	Multifocal	Unifocal	Multifocal
Recurrence Status	0.368	−0.01	0.353	0.091
pT	−0.157	0.083	0.017	0.091
pN	−0.204	−0.054	0.018	−0.096
pM	−0.257	0.159	−0.34	0.011
Grade	−0.152	−0.01	0.071	0.081
Histology	0.034	0.124	−0.12	0.004
ER α	0.012	0.126	0.181	−0.212
ER β	0.741 **	0.699 **	0.783 **	0.612 **
HER2	0.397	0.196	0.239	0.309

Spearman's Rho correlation coefficient are presented. Correlation are statistically significant for $p < 0.01$ (**), using a Spearman's Rho test. pT: primary tumor size; pN: lymph node involvement; pM: state of metastasis.

2.3. Correlation with Patient Survival

To analyze whether patient survival was linked to expression of the transcription factors, we then performed Kaplan–Meier analyses using the optimal threshold IRS values determined by receiver operating characteristic curve (ROC-curve) analysis for each selected parameter (as detailed in the “Survival Analysis” section of “Materials and Methods”). In the matched-pair cohort, the mean survival time of patients with unifocal cancer was not significantly different from that of patients with multifocal cancer, as shown in Table 1. As shown in Figure 2, we observed a significant correlation of either high RIP140 ($p = 0.003$), high LCoR ($p = 0.028$), or high ER β ($p = 0.001$) expression with poor OS in the unifocal group, whereas OS analysis in the multifocal group showed no significant correlation to transcription factor expression levels. Mean survival times in the unifocal group were 153.9 and 53.4 months for low vs. high RIP140 expression, 146.3 and 56.8 months for low vs. high LCoR expression, and 161.9 and 55.7 months for low vs. high ER β expression, whereas no correlation in either group was observed for ER α expression.

We then combined the parameters to evaluate whether the positivity of two markers could better predict OS. The combination of ER α expression with either RIP140, LCoR, or ER β expression did not reveal any change in correlation with OS, neither in the unifocal nor in the multifocal group. As illustrated in Figure 3, high LCoR expression combined with high RIP140 expression (A,B) or ER β expression (C,D) maintained a significant correlation with a poor OS in the unifocal cases only ($p < 0.01$) but did not improve the prognostic impact compared to the individual markers, as shown in Figure 2. In contrast, combined RIP140 and ER β expression (E,F) had an even stronger correlation with poor OS ($p = 0.0004$), again only in the unifocal group (mean survival times of 160.9 and 44.2 months for low vs. high combined expression).

Taking into account this strong correlation of the combined RIP140 and ER β expression with poor OS, we calculated the correlation with recurrence free survival (RFS), as shown in Supplementary Figure S1. We observed again a significant correlation of either high RIP140 ($p = 0.004$) or high ER β ($p = 0.0002$) expression with poor RFS in the unifocal group (A and C, respectively), whereas RFS analysis in the multifocal group showed no significant correlation (B and D, respectively). The combined RIP140 and ER β expression (E,F) had again an even stronger correlation with poor RFS ($p = 0.00001$) only in the unifocal group.

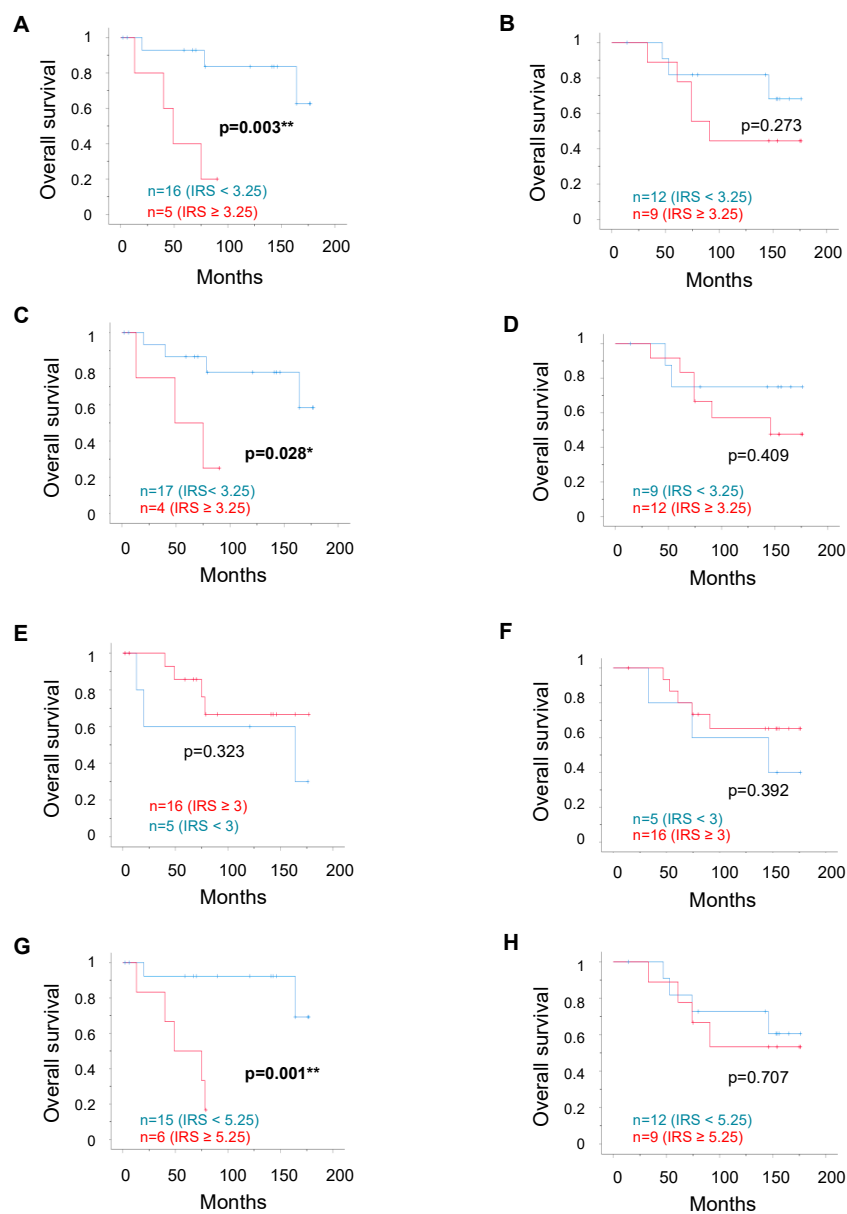


Figure 2. Patient overall survival (OS) according to RIP140, LCoR, ERα, or ERβ expression. Kaplan–Meier analysis of the correlation between RIP140 (A,B), LCoR (C,D), ERα (E,F), or ERβ (G,H) expression with OS in the matched pairs of unifocal (A,C,E,G) or multifocal (B,D,F,H) breast cancers. The IRS cut-off values together with the number of cases in each arm are indicated in each panel. Correlations are statistically significant for $p < 0.05$ (*) and for $p < 0.01$ (**).

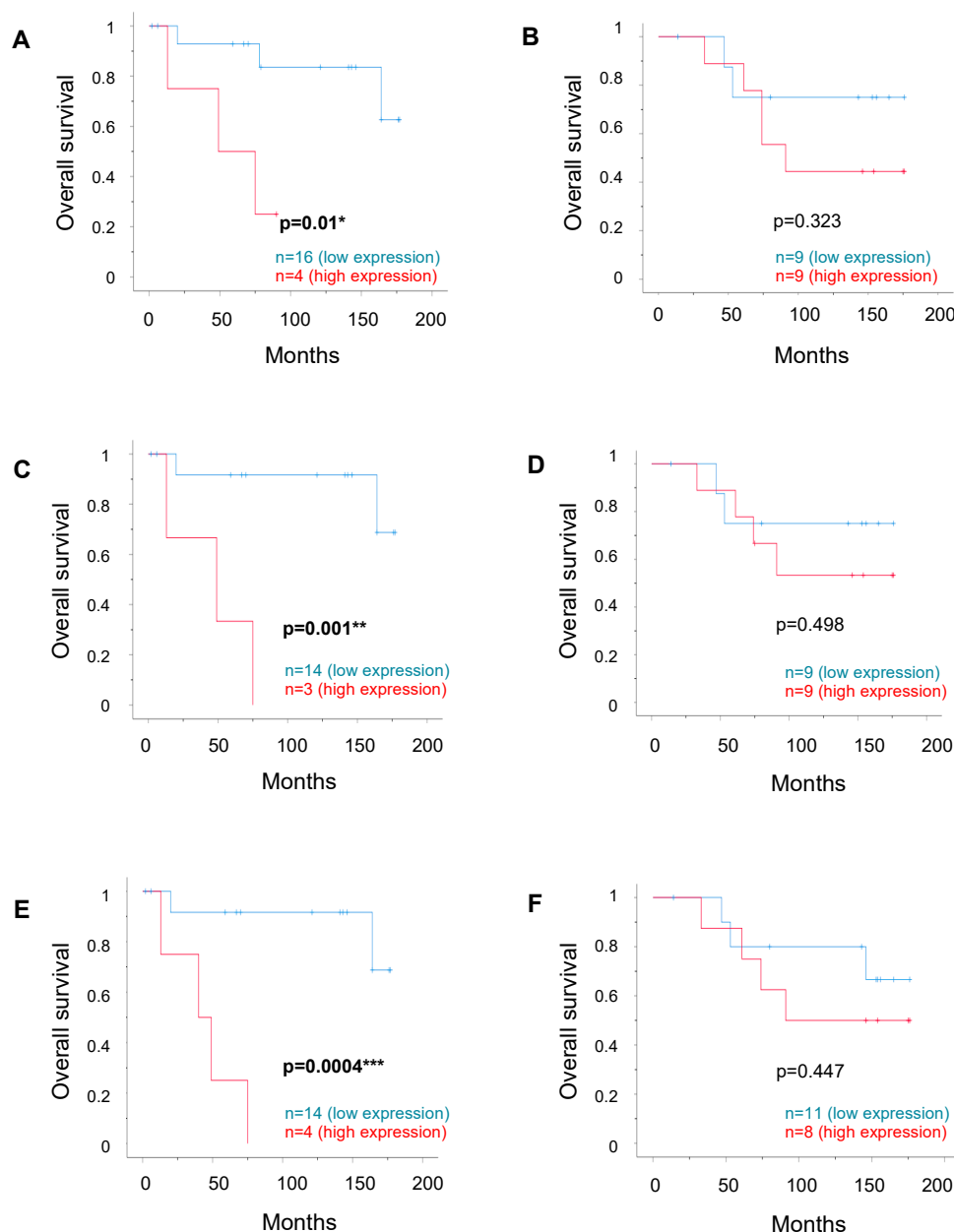


Figure 3. Overall survival according to combined expression of RIP140, LCoR, or ER β . Kaplan–Meier analysis of the correlation between combined low vs. high expression of two markers with OS in the matched pairs (unifocal for **A**, **C**, **E** or multifocal for **B**, **D**, **F**). The analysis was performed with LCoR expression combined with RIP140 (**A**,**B**) or ER β (**C**,**D**) expression, or with RIP140 expression combined with ER β expression (**E**, **F**). Correlations are statistically significant for $p < 0.05$ (*), for $p < 0.01$ (**), and for $p < 0.001$ (***)

3. Discussion

The aim of this study was to compare RIP140 and LCoR expression in unifocal and multifocal BC samples, and to identify correlations with clinical parameters. We did not analyze multifocal and multicentric cancers separately but grouped them in the multifocal cohort and compared them to unifocal tumors.

In our matched-pair cohort of BC samples, LCoR appeared expressed at lower levels in the unifocal tumors (lower average IRS values and lower percentage of high expressing tumors). The same trend was noticed for RIP140 although the difference was not significant. Nonetheless, expression of

the two transcription factors was highly correlated in both groups, as recently described in a large BC patient cohort [28].

RIP140 or LCoR expression did not correlate with clinicopathological parameters, neither in unifocal nor in multifocal samples, except with ER β levels. Indeed, a strong and significant correlation with ER β expression was observed for both coregulators in the unifocal and in the multifocal group. In contrast, no significant correlations were observed between RIP140, LCoR, or ER β expression and cell adhesion-related glycoproteins, namely E-cadherin, MUC1, and β -catenin compared in the unifocal vs. multifocal groups (data not shown). We previously quantified these three proteins in the same matched cohort, demonstrating that cytoplasmic β -catenin was associated significantly with reduced OS in unifocal patients [10].

Survival analysis demonstrated that high LCoR expression, and to a stronger extent high RIP140 or ER β expression, correlated significantly with poor OS only in the unifocal BC samples. No significant correlation with survival was seen in the multifocal BC cohort, indicating a difference in the expression patterns and prognostic relevance of these transcription factors according to the focality status. It should be mentioned again that other biological parameters, such as tumor size, histology grade, and lymph node status, were similar between the two groups.

Concerning RIP140, these results are in accordance with our data obtained on a cohort of 320 samples showing that high RIP140 protein levels were correlated with short disease-free survival (DFS) [28]. With respect to ER β , the biological relevance of high expression and its consequences on clinical outcome are still controversially discussed, depending on patient cohorts, analysis method (ER β mRNA or protein) or ER β isoforms tested [29–32]. We analyzed ER β 1, the full-length fully functional ER β isoform [29]. Indeed, ER β overexpression was found to be correlated either with poor [33,34] or with favorable [35] DFS. A study performed on 139 ER-positive BC samples demonstrated that ER β protein levels were correlated with small tumor size, while ER β mRNA levels were associated with poor DFS and were found to be an independent predictor of disease recurrence [33]. However, none of these studies analyzed survival according to tumor focality.

Interestingly, our data demonstrated an enhanced prognostic impact of combined ER β /RIP140 expression on OS. RIP140 exerts a strong inhibitory effect on estrogen signaling; it was previously shown to interact more efficiently with ER β than with ER α and to inhibit its activity with greater efficacy [20]. Cistrome and transcriptome analyses combined with clustering algorithms also supported a preferential recruitment of RIP140 by ER β [22]. Moreover, the induction of RIP140 appeared mainly driven by ER β in ovarian cancer cells [20]. Being aware of the small number of patients in our study, and the limitations of the immunostaining as a semi-quantitative assessment technique, we looked for confirmation of this significant effect on unifocal BC patients. We could confirm the negative impact of RIP140 or ER β alone, and of the combined high ER β /RIP140 expression on DFS also, suggesting that the two proteins may control various aspects of BC progression.

4. Materials and Methods

4.1. Collective

As previously described [10], our total collective was formed of a consecutive patient cohort consisting of 112 patients documented and surgically treated for primary BC between 2000 and 2002 at the Department of Gynecology of the University Hospital in Munich-Innenstadt; 57 unifocal BC patients and 55 patients with multicentric/multifocal disease. Data were entered into the database in an anonymized and coded fashion.

Because of the uneven distribution of prognostic factors in our original patient group, a matched pair analysis was performed. From this collective, two equivalent groups of 23 BC patients with multicentric/multifocal vs. unifocal tumors were selected according to the highest degree of equivalence in the following hierarchical and sequential order: tumor size at the time of primary diagnosis, histology grading, and lymph node status. We deliberately matched patients based on

the criteria at the time of primary diagnosis. Kruskal–Wallis one-way analysis of variance was used, which tests the equality of population medians among groups in a non-parametric way (continuation of the Mann–Whitney U test to analyze ≥ 3 groups). Hereby BC were equally allocated into the two groups ($p = 1.000$). The Institutional Review Board of the Ludwig Maximilian University (LMU) Munich, Germany, approved the study (approval number 048–08, 18 03. 2008) and all the patients gave informed consent. For the present study, from these 2 groups of 23 patients, only tumors of 2 groups of 21 patients could be stained for RIP140. Our study was then based upon a total of 42 primary BC, with 21 tumors classified as primary unifocal BC and 21 as multifocal or multicentric BC.

The focality status was evaluated by clinical examination, ultrasound, and mammography. In some cases, further investigation including nuclear magnetic resonance imaging (NMRI), galactography, or pneumocystography was necessary to accurately describe the focality status. Tumors with unconfirmed or questionable focality status (prior to histological examination) were excluded. All patients included in this project had to be free of any other disease at the time of the primary diagnosis and to be treated for resectable BC.

Tumor stage at primary diagnosis was histologically evaluated using the “Union internationale contre le cancer” (UICC) TNM classification which includes tumor size (primary tumor size, or pT, classified as: pT1a-c, pT2, pT3, pT4a-d), involvement of regional lymph nodes (N), and presence or absence of metastases (M). The tumor grade was determined by an experienced pathologist (Dr D. Mayr) of the LMU Department of Pathology and classified according to the WHO (Nottingham grading respectively to Elston and Ellis modification of Bloom–Richardson grading) [36]. For multifocal samples, each tumor was analyzed and classified as ER α or HER2 positive BC if at least one tumor lesion was positive. Additional data, such as age, ER α status, HER2-status, histological grade, metastases, local recurrence, progression, and survival, were retrieved from the Munich Cancer Registry.

All patient data were fully anonymized, and all diagnostic procedures had already been fully completed when samples were collected for the study. Authors were blinded from the clinical information during the experimental analysis. This study was approved by the Ethical Committee of the Medical Faculty, LMU, Munich, Germany and informed consent was obtained from all patients.

4.2. Immunohistochemistry

Expression of ER α and HER2 was determined at diagnosis, in all BC samples of this cohort at the LMU Department of Pathology, Germany. ER α expression was evaluated by immunohistochemistry, as previously described [36]. Samples showing nuclear staining in more than 10% of tumor cells were considered as hormone receptor-positive, in agreement with the guidelines at the time of the analysis (2000–2002). HER2 expression was analyzed with an automated staining system (Ventana; Roche, Mannheim, Germany), according to the manufacturer’s instructions. Data on MUC-1, β -catenin, and E-cadherin expression in these BC samples were extracted from a previously published study [10]. For ER β , RIP140, and LCoR analysis, samples were processed as previously described [28,37,38]. Formalin-fixed and paraffin-embedded sections of 3 μ m were deparaffinized using xylol for 20 minutes, rehydrated in a descending ethanol gradient (100%, 96%, and 70%) and subjected to epitope retrieval for 5 min in a pressure cooker using sodium citrate buffer (pH 6.0). After returning to room temperature, sections were washed twice in PBS (phosphate buffered saline). The sections were immersed in 3% H₂O₂ in methanol for 20 min to block endogenous peroxidase activity. To prevent non-specific binding of the primary antibody, the sections were treated by the appropriate blocking solution. Incubation with the primary antibody (RIP140: polyclonal antibody, Sigma Aldrich; LCoR: polyclonal antibody, Novus Biologicals; ER β 1: monoclonal antibody, Dako, Glostrup) was performed for 16 hours at a temperature of 8 °C. After washing with PBS, reactivity was detected by the Vectastain Elite ABC-Kit (Vector Laboratories, Burlingame, CA, USA) according to the producer’s protocol. Visualization was reached with DAB substrate and chromogen (3, 3'-diaminobenzidine DAB, Dako, Glostrup, Denmark) for 2 minutes. Then the slides were counterstained with Maier’s acidic hematoxylin and dehydrated

in an ascending alcohol series (50–98%), then immersed in xylol. The sections were embedded and covered. Placenta tissue served as positive control staining. Replacement of the primary antibody with mouse or rabbit IgG was used as negative control.

The slides were investigated using a Leitz Diaplan microscope (Wetzlar, Germany) with a 3CCD color camera (JVC, Victor Company of Japan, Yokohama, Japan). To differentiate the intensity and distribution patterns, the semi-quantitative IRS was used. The IRS assesses the percentage of positively stained cells (graded as 0 = none, 1 = weak, 2 = moderate, and 3 = strong) with the cells' intensity of staining (0 = no staining, 1 = <10% of cells, 2 = 11–50% of cells, 3 = 51–80%, and 4 = >81% of cells) by multiplying. The reproducibility of RIP140 and LCoR stainings was checked by triplicate stainings of some sections and for all sections, the stainings were analyzed by two independent observers.

4.3. Statistical Analyses

Statistical analyses were performed on the 21 matched pairs resulting in a total collective of 42 patients. Besides the collective characterization described above, the differences were calculated using mean or percentage bilateral analysis, as shown in Table 2, and the correlations using Spearman's Rho test, as shown in Tables 2 and 3. All differences or correlations are statistically significant for $p < 0.05$ (*), $p < 0.01$ (**) or $p < 0.001$ (***). The IBM Statistical Package for the Social Sciences 24.0 (SPSS Inc., Chicago, IL, USA) was used to test for statistical significance.

4.4. Survival Analysis

To compare the mean immunoreactivity levels described by the IRS, the groups were divided into low vs. high expressing (RIP140, LCoR, ER β , and ER α) cases. Therefore ROC-curve analyses were performed and the maximum difference between sensitivity and specificity was used for identification of the cut-off level for RIP140, LCoR, ER β , and ER α . The following thresholds were determined regarding OS: RIP140 ≥ 3.25 , LCoR ≥ 3.25 , ER β ≥ 5.25 , ER α ≥ 3.0 . These thresholds were used to determine the percentages of low or high RIP140 and LCoR expression described in Table 2, besides the survival analysis.

Survival times were compared by Kaplan–Meier graphics and differences in OS, as shown in Figures 2 and 3, and DFS, as shown in Figure S1, were tested for significance using the chi-square statistics of the log rank test. Data were assumed to be statistically significant in case of p -value < 0.05 . Kaplan–Meier graphics were then provided for each subgroup and each marker as well as for the combined expression of two markers in order to compare the differences of survival times between unifocal and multifocal tumors and between low and high receptor expression. Only mean survival times are presented, as median survival times were not reached for all sub-groups.

5. Conclusions

In conclusion, this preliminary report shows that the prognostic value of ER β /RIP140 coexpression differs according to tumor focality and significantly correlates with poor OS and DFS only in patients with unifocal BC. While being small, our cohort presents the great advantage of being a matched-pair cohort with perfect matching criteria. Moreover, despite the relatively limited number of cases, the results obtained in unifocal tumors for RIP140 and ER β were highly significant. These data strengthen the need to further investigate the relevance of these two genes as independent prognostic markers in extended cohorts and to enlarge the analysis to other nuclear receptors and coregulators. It would also be of interest to understand why ER β and RIP140 lose their prognostic impact (as single markers or in combination) in multifocal BC. Altogether, our results may lead to a better understanding of key transcription networks involved in multifocal BC and to define the clinical potential of new biological markers.

Supplementary Materials: Supplementary materials can be found at <http://www.mdpi.com/1422-0067/20/2/418/s1>. Figure S1: Recurrence free survival (RFS) according to the expression of RIP140 and ER β , alone or combined.

Author Contributions: S.S., V.C., and U.J. conceived and supervised the project. D.M., N.D., T.W., and S.M. provided the samples and the related clinical data. K.M. performed most experiments, with the help of C.K. K.M. wrote the first draft of the paper. S.S., V.C., U.J., S.J., and N.H. contributed to manuscript writing and editing. All authors read and approved the final manuscript.

Funding: S.S. salary was supported by the University Paul Sabatier in Toulouse (France). The project was supported by the “Centre de Coopération Universitaire Franco-Bavarois” (CCUFB) or “Bayerisch-Französisches Hochschulzentrum” (BFHZ), Project funding FK19-15.

Acknowledgments: We want to acknowledge technical support from Simone Hofmann and this paper is dedicated to the memory of Sandra Schulze.

Conflicts of Interest: The authors declare no conflict of interest.

Abbreviations

BC	breast cancer
DFS	disease free survival
DCIS	ductal carcinoma in situ
ER	estrogen receptor
HER2	human epidermal growth factor receptor 2
IRS	immunoreactive score
LCoR	ligand dependent corepressor
MUC-1	epithelial mucin-1
NST	non-special type
pN	lymph node involvement
LMU	Ludwig Maximilians University
M	Metastasis
NMRI	nuclear magnetic resonance imaging
NR	nuclear receptor
OS	overall survival
PBS	phosphate buffered saline
pT	primary tumor size
PR	progesterone receptor
RFS	recurrence free survival
ROC-curve	receiver operating characteristic curve
RIP140	receptor interacting protein of 140 kDa
TNM status	tumor node metastasis status

References

1. Cserni, G.; Bori, R.; Sejben, I.; Vörös, A.; Kaiser, L.; Hamar, S.; Csörgő, E.; Kulka, J. Unifocal, multifocal and diffuse carcinomas: A reproducibility study of breast cancer distribution. *Breast* **2013**, *22*, 34–38. [[CrossRef](#)] [[PubMed](#)]
2. Tot, T.; Pekár, G. Multifocality in “basal-like” breast carcinomas and its influence on lymph node status. *Ann. Surg. Oncol.* **2011**, *18*, 1671–1677. [[CrossRef](#)] [[PubMed](#)]
3. Lynch, S.P.; Lei, X.; Hsu, L.; Meric-Bernstam, F.; Buchholz, T.A.; Zhang, H.; Hortobágyi, G.N.; Gonzalez-Angulo, A.M.; Valero, V. Breast cancer multifocality and multicentricity and locoregional recurrence. *Oncologist* **2013**, *18*, 1167–1173. [[CrossRef](#)] [[PubMed](#)]
4. Salgado, R.; Aftimos, P.; Sotiriou, C.; Desmedt, C. Evolving paradigms in multifocal breast cancer. *Semin. Cancer Biol.* **2015**, *31*, 111–118. [[CrossRef](#)] [[PubMed](#)]
5. Manavathi, B.; Dey, O.; Gajulapalli, V.N.R.; Bhatia, R.S.; Bugide, S.; Kumar, R. Derailed estrogen signaling and breast cancer: An authentic couple. *Endocr. Rev.* **2013**, *34*, 1–32. [[CrossRef](#)] [[PubMed](#)]
6. Lang, Z.; Wu, Y.; Li, C.; Li, X.; Wang, X.; Qu, G. Multifocal and Multicentric Breast Carcinoma: A Significantly More Aggressive Tumor than Unifocal Breast Cancer. *Anticancer Res.* **2017**, *37*, 4593–4598. [[PubMed](#)]
7. Vera-Badillo, F.E.; Napoleone, M.; Ocana, A.; Templeton, A.J.; Seruga, B.; Al-Mubarak, M.; AlHashem, H.; Tannock, I.F.; Amir, E. Effect of multifocality and multicentricity on outcome in early stage breast cancer: A systematic review and meta-analysis. *Breast Cancer Res. Treat.* **2014**, *146*, 235–244. [[CrossRef](#)] [[PubMed](#)]

8. Boros, M.; Voidazan, S.; Moldovan, C.; Georgescu, R.; Toganel, C.; Moncea, D.; Molnar, C.V.; Podoleanu, C.; Eniu, A.; Stolnicu, S. Clinical implications of multifocality as a prognostic factor in breast carcinoma—A multivariate analysis study comprising 460 cases. *Int. J. Clin. Exp. Med.* **2015**, *8*, 9839–9846. [[PubMed](#)]
9. Weissenbacher, T.M.; Zschage, M.; Janni, W.; Jeschke, U.; Dimpfl, T.; Mayr, D.; Rack, B.; Schindlbeck, C.; Friese, K.; Dian, D. Multicentric and multifocal versus unifocal breast cancer: Is the tumor-node-metastasis classification justified? *Breast Cancer Res. Treat.* **2010**, *122*, 27–34. [[CrossRef](#)]
10. Weissenbacher, T.; Hirte, E.; Kuhn, C.; Janni, W.; Mayr, D.; Karsten, U.; Rack, B.; Friese, K.; Jeschke, U.; Heublein, S.; et al. Multicentric and multifocal versus unifocal breast cancer: Differences in the expression of E-cadherin suggest differences in tumor biology. *BMC Cancer* **2013**, *13*, 361. [[CrossRef](#)]
11. Park, B.-W.; Kim, K.-S.; Heo, M.-K.; Ko, S.-S.; Hong, S.W.; Yang, W.-I.; Kim, J.-H.; Kim, G.E.; Lee, K.S. Expression of estrogen receptor-beta in normal mammary and tumor tissues: Is it protective in breast carcinogenesis? *Breast Cancer Res. Treat.* **2003**, *80*, 79–85. [[CrossRef](#)] [[PubMed](#)]
12. Park, B.-W.; Kim, K.-S.; Heo, M.-K.; Yang, W.-I.; Kim, S.I.; Kim, J.-H.; Kim, G.E.; Lee, K.S. The changes of estrogen receptor-beta variants expression in breast carcinogenesis: Decrease of estrogen receptor-beta2 expression is the key event in breast cancer development. *J. Surg. Oncol.* **2006**, *93*, 504–510. [[CrossRef](#)] [[PubMed](#)]
13. Doan, T.B.; Eriksson, N.A.; Graham, D.; Funder, J.W.; Simpson, E.R.; Kuczek, E.S.; Clyne, C.; Leedman, P.J.; Tilley, W.D.; Fuller, P.J.; et al. Breast cancer prognosis predicted by nuclear receptor-coregulator networks. *Mol. Oncol.* **2014**, *8*, 998–1013. [[CrossRef](#)]
14. Cavallès, V.; Dauvois, S.; L'Horset, F.; Lopez, G.; Hoare, S.; Kushner, P.J.; Parker, M.G. Nuclear factor RIP140 modulates transcriptional activation by the estrogen receptor. *EMBO J.* **1995**, *14*, 3741–3751. [[CrossRef](#)] [[PubMed](#)]
15. Gurevich, I.; Flores, A.M.; Aneskievich, B.J. Corepressors of agonist-bound nuclear receptors. *Toxicol. Appl. Pharmacol.* **2007**, *223*, 288–298. [[CrossRef](#)] [[PubMed](#)]
16. Docquier, A.; Harmand, P.-O.; Fritsch, S.; Chanrion, M.; Darbon, J.-M.; Cavallès, V. The transcriptional coregulator RIP140 represses E2F1 activity and discriminates breast cancer subtypes. *Clin. Cancer Res.* **2010**, *16*, 2959–2970. [[CrossRef](#)] [[PubMed](#)]
17. Lei, J.-J.; Peng, R.-J.; Kuang, B.-H.; Yuan, Z.-Y.; Qin, T.; Liu, W.-S.; Guo, Y.-M.; Han, H.-Q.; Lian, Y.-F.; Deng, C.-C.; et al. NOP14 suppresses breast cancer progression by inhibiting NR1P1/Wnt/ β -catenin pathway. *Oncotarget* **2015**, *6*, 25701–25714. [[CrossRef](#)]
18. Lapierre, M.; Docquier, A.; Castet-Nicolas, A.; Gitenay, D.; Jalaguier, S.; Teyssier, C.; Cavallès, V. The emerging role of the transcriptional coregulator RIP140 in solid tumors. *Biochim. Biophys. Acta* **2015**, *1856*, 144–150. [[CrossRef](#)]
19. Augereau, P.; Badia, E.; Carascossa, S.; Castet, A.; Fritsch, S.; Harmand, P.-O.; Jalaguier, S.; Cavallès, V. The nuclear receptor transcriptional coregulator RIP140. *Nucl. Recept. Signal.* **2006**, *4*, e024. [[CrossRef](#)] [[PubMed](#)]
20. Docquier, A.; Garcia, A.; Savatier, J.; Boulahtouf, A.; Bonnet, S.; Bellet, V.; Busson, M.; Margeat, E.; Jalaguier, S.; Royer, C.; et al. Negative regulation of estrogen signaling by ER β and RIP140 in ovarian cancer cells. *Mol. Endocrinol.* **2013**, *27*, 1429–1441. [[CrossRef](#)] [[PubMed](#)]
21. Ruddy, S.C.; Lau, R.; Cabrita, M.A.; McGregor, C.; McKay, B.C.; Murphy, L.C.; Wright, J.S.; Durst, T.; Pratt, M.A.C. Preferential estrogen receptor β ligands reduce Bcl-2 expression in hormone-resistant breast cancer cells to increase autophagy. *Mol. Cancer Ther.* **2014**, *13*, 1882–1893. [[CrossRef](#)] [[PubMed](#)]
22. Madak-Erdogan, Z.; Charn, T.-H.; Jiang, Y.; Liu, E.T.; Katzenellenbogen, J.A.; Katzenellenbogen, B.S. Integrative genomics of gene and metabolic regulation by estrogen receptors α and β , and their coregulators. *Mol. Syst. Biol.* **2013**, *9*, 676. [[CrossRef](#)] [[PubMed](#)]
23. Nautiyal, J.; Steel, J.H.; Mane, M.R.; Oduwole, O.; Poliandri, A.; Alexi, X.; Wood, N.; Poutanen, M.; Zwart, W.; Stingl, J.; et al. The transcriptional co-factor RIP140 regulates mammary gland development by promoting the generation of key mitogenic signals. *Development* **2013**, *140*, 1079–1089. [[CrossRef](#)] [[PubMed](#)]
24. Fernandes, I.; Bastien, Y.; Wai, T.; Nygard, K.; Lin, R.; Cormier, O.; Lee, H.S.; Eng, F.; Bertos, N.R.; Pelletier, N.; et al. Ligand-dependent nuclear receptor corepressor LCoR functions by histone deacetylase-dependent and -independent mechanisms. *Mol. Cell* **2003**, *11*, 139–150. [[CrossRef](#)]
25. Song, Y.; Shan, S.; Zhang, Y.; Liu, W.; Ding, W.; Ren, W.; Xia, H.; Li, X.; Zhang, Q.; Zhao, L.; et al. Ligand-dependent corepressor acts as a novel corepressor of thyroid hormone receptor and represses hepatic lipogenesis in mice. *J. Hepatol.* **2012**, *56*, 248–254. [[CrossRef](#)] [[PubMed](#)]

26. Asim, M.; Hafeez, B.B.; Siddiqui, I.A.; Gerlach, C.; Patz, M.; Mukhtar, H.; Baniahmad, A. Ligand-dependent corepressor acts as a novel androgen receptor corepressor, inhibits prostate cancer growth, and is functionally inactivated by the Src protein kinase. *J. Biol. Chem.* **2011**, *286*, 37108–37117. [[CrossRef](#)] [[PubMed](#)]
27. Jalaguier, S.; Teyssier, C.; Nait Achour, T.; Lucas, A.; Bonnet, S.; Rodriguez, C.; Elarouci, N.; Lapierre, M.; Cavaillès, V. Complex regulation of LCoR signaling in breast cancer cells. *Oncogene* **2017**, *36*, 4790–4801. [[CrossRef](#)]
28. Sixou, S.; Müller, K.; Jalaguier, S.; Kuhn, C.; Harbeck, N.; Mayr, D.; Engel, J.; Jeschke, U.; Ditsch, N.; Cavaillès, V. Importance of RIP140 and LCoR Sub-Cellular Localization for Their Association With Breast Cancer Aggressiveness and Patient Survival. *Transl. Oncol.* **2018**, *11*, 1090–1096. [[CrossRef](#)]
29. Shaaban, A.M.; Green, A.R.; Karthik, S.; Alizadeh, Y.; Hughes, T.A.; Harkins, L.; Ellis, I.O.; Robertson, J.F.; Paish, E.C.; Saunders, P.T.K.; et al. Nuclear and cytoplasmic expression of ERbeta1, ERbeta2, and ERbeta5 identifies distinct prognostic outcome for breast cancer patients. *Clin. Cancer Res.* **2008**, *14*, 5228–5235. [[CrossRef](#)]
30. Yan, M.; Rayoo, M.; Takano, E.A.; kConFab Investigators; Fox, S.B. Nuclear and cytoplasmic expressions of ERβ1 and ERβ2 are predictive of response to therapy and alters prognosis in familial breast cancers. *Breast Cancer Res. Treat.* **2011**, *126*, 395–405. [[CrossRef](#)]
31. Shanle, E.K.; Onitilo, A.A.; Huang, W.; Kim, K.; Zang, C.; Engel, J.M.; Xu, W.; Wisinski, K.B. Prognostic significance of full-length estrogen receptor beta expression in stage I-III triple negative breast cancer. *Am J. Transl. Res.* **2015**, *7*, 1246–1259. [[PubMed](#)]
32. Dall, G.V.; Hawthorne, S.; Seyed-Razavi, Y.; Vieusseux, J.; Wu, W.; Gustafsson, J.-A.; Byrne, D.; Murphy, L.; Risbridger, G.P.; Britt, K.L. Estrogen receptor subtypes dictate the proliferative nature of the mammary gland. *J. Endocrinol.* **2018**, *237*, 323–336. [[CrossRef](#)] [[PubMed](#)]
33. Kim, T.-J.; Lee, A.; Choi, Y.-J.; Song, B.J.; Yim, H.W.; Kang, C.S. Prognostic Significance of High Expression of ER-beta in Surgically Treated ER-Positive Breast Cancer Following Endocrine Therapy. *J Breast Cancer* **2012**, *15*, 79–86. [[CrossRef](#)] [[PubMed](#)]
34. Guo, L.; Zhu, Q.; Yilamu, D.; Jakulin, A.; Liu, S.; Liang, T. Expression and prognostic value of estrogen receptor beta in breast cancer patients. *Int. J. Clin. Exp. Med.* **2014**, *7*, 3730–3736. [[PubMed](#)]
35. Tan, W.; Li, Q.; Chen, K.; Su, F.; Song, E.; Gong, C. Estrogen receptor beta as a prognostic factor in breast cancer patients: A systematic review and meta-analysis. *Oncotarget* **2016**, *7*, 10373–10385. [[CrossRef](#)] [[PubMed](#)]
36. Elston, E.W.; Ellis, I.O. Method for grading breast cancer. *J. Clin. Pathol.* **1993**, *46*, 189–190. [[CrossRef](#)] [[PubMed](#)]
37. Mylonas, I.; Makovitzky, J.; Jeschke, U.; Briese, V.; Frieze, K.; Gerber, B. Expression of Her2/neu, steroid receptors (ER and PR), Ki67 and p53 in invasive mammary ductal carcinoma associated with ductal carcinoma In Situ (DCIS) Versus invasive breast cancer alone. *Anticancer Res.* **2005**, *25*, 1719–1723.
38. Bock, C.; Kuhn, C.; Ditsch, N.; Krebold, R.; Heublein, S.; Mayr, D.; Doisneau-Sixou, S.; Jeschke, U. Strong correlation between N-cadherin and CD133 in breast cancer: Role of both markers in metastatic events. *J. Cancer Res. Clin. Oncol.* **2014**, *140*, 1873–1881. [[CrossRef](#)]

