



HAL
open science

Assessing different components of diversity across a river network using eDNA

Elvira Mächler, Chelsea Little, Remo Wüthrich, Roman Alther, Emanuel Fronhofer, Isabelle Gounand, Eric Harvey, Samuel Hürlemann, Jean-claude Walser, Florian Altermatt

► To cite this version:

Elvira Mächler, Chelsea Little, Remo Wüthrich, Roman Alther, Emanuel Fronhofer, et al.. Assessing different components of diversity across a river network using eDNA. *Environmental DNA*, 2019, 1 (3), pp.290-301. 10.1002/edn3.33 . hal-02286085

HAL Id: hal-02286085

<https://hal.umontpellier.fr/hal-02286085>

Submitted on 13 Sep 2019

HAL is a multi-disciplinary open access archive for the deposit and dissemination of scientific research documents, whether they are published or not. The documents may come from teaching and research institutions in France or abroad, or from public or private research centers.

L'archive ouverte pluridisciplinaire **HAL**, est destinée au dépôt et à la diffusion de documents scientifiques de niveau recherche, publiés ou non, émanant des établissements d'enseignement et de recherche français ou étrangers, des laboratoires publics ou privés.

Assessing different components of diversity across a river network using eDNA

Elvira Mächler^{1,2}  | Chelsea J. Little^{1,2}  | Remo Wüthrich¹ | Roman Alther^{1,2}  | Emanuel A. Fronhofer^{1,2,3}  | Isabelle Gounand^{1,2}  | Eric Harvey^{1,2,4}  | Samuel Hürlemann¹ | Jean-Claude Walser⁵ | Florian Altermatt^{1,2} 

¹Department of Aquatic Ecology, Eawag: Swiss Federal Institute of Aquatic Science and Technology, Dübendorf, Switzerland

²Institute of Evolutionary Biology and Environmental Studies, University of Zurich, Zurich, Switzerland

³ISEM, Univ Montpellier, CNRS, EPHE, IRD, Montpellier, France

⁴Département de Sciences Biologiques, Université de Montréal, Montréal, QC, Canada

⁵Genetic Diversity Centre, Federal Institute of Technology (ETH), Zurich, Switzerland

Correspondence

Elvira Mächler and Florian Altermatt, Department of Aquatic Ecology, Eawag: Swiss Federal Institute of Aquatic Science and Technology, Überlandstrasse 133, CH-8600 Dübendorf, Switzerland. Emails: elvira.maechler@eawag.ch (EM); florian.altermatt@eawag.ch (FA)

Funding information

Velux Stiftung; Schweizerischer Nationalfonds zur Förderung der Wissenschaftlichen Forschung, Grant/Award Number: 31003A_173074 and PP00P3_179089; Forschungskredit grant of the University of Zurich; Zurich Research Priority Program "URPP Global Change and Biodiversity"

Abstract

Assessing individual components of biodiversity, such as local or regional taxon richness, and differences in community composition is a long-standing challenge in ecology. It is especially relevant in spatially structured and diverse ecosystems. Environmental DNA (eDNA) has been suggested as a novel technique to detect taxa and therefore may allow to accurately measure biodiversity. However, we do not yet fully understand the comparability of eDNA-based assessments to classical morphological approaches. We assessed may-, stone-, and caddisfly genera with two contemporary methods, namely eDNA sampling followed by molecular identification and kicknet sampling followed by morphological identification. We sampled 61 sites distributed over a large river network, allowing a comparison of various diversity measures from the catchment to site levels and providing insights into how these measures relate to network properties. We extended our data with historical morphological records of total diversity at the catchment level. At the catchment scale, identification based on eDNA and kicknet samples detected similar proportions of the overall and cumulative historically documented richness (gamma diversity), 42% and 46%, respectively. We detected a good overlap (62%) between genera identified from eDNA and kicknet samples at the regional scale. At the local scale, we found highly congruent values of local taxon richness (alpha diversity) between eDNA and kicknet samples. Richness of eDNA was positively related to discharge, a descriptor of network position, while kicknet was not. Beta diversity, a measure of dissimilarity between sites, was comparable for the two contemporary methods and is driven by species replacement and not by nestedness. Although eDNA approaches are still in their infancy and optimization regarding sampling design and laboratory work is still needed, our results indicate that it can capture different components of diversity, proving its potential utility as a new tool for large sampling campaigns across hitherto understudied complete river catchments.

Elvira Mächler and Chelsea J. Little shared first authorship.

This is an open access article under the terms of the Creative Commons Attribution License, which permits use, distribution and reproduction in any medium, provided the original work is properly cited.

© 2019 The Authors. *Environmental DNA* published by John Wiley & Sons Ltd

KEYWORDS

dendritic networks, Ephemeroptera, freshwater biodiversity, metabarcoding, Plecoptera, Trichoptera

1 | INTRODUCTION

Quantifying biodiversity accurately is a long-standing challenge of primary importance in ecology (Dornelas et al., 2013; Gotelli & Colwell, 2011; Whittaker, 1972). On the one hand, there is a fundamental interest to understand the distribution of diversity in time and space and the mechanistic drivers from regional to local scales (e.g., Gaston, 2000; Gotelli & Colwell, 2011; Koleff, Gaston, & Lennon, 2003). On the other hand, the ecological state and functioning of ecosystems is often inherently linked to biodiversity (Pennekamp et al., 2018) and the current loss of biodiversity has potentially large negative consequences on the functions and services of ecosystems (Chapin et al., 1998; Isbell et al., 2017). This is especially relevant for freshwater habitats because they provide crucial ecosystem services such as drinking water, food security, or recreational value to humanity (Cardinale et al., 2012; Dudgeon et al., 2006; Postel & Carpenter, 1997).

In river systems, may-, stone-, and caddisflies (Ephemeroptera, Plecoptera, and Trichoptera; thereafter abbreviated as EPT) are often used as indicators of water quality due to their sensitivity to environmental change, their different preferences for ecological niches, and their relatively well-known taxonomy (Schmidt-Kloiber & Hering, 2015). The presence or absence of certain EPT taxa or their overall richness is highly informative and can be tightly linked to habitat quality (Resh & Rosenberg, 1993). Importantly, they not only describe the current state of a water body, like a single water chemistry samples, but also integrate its changes over time and therefore also inform on the long-term status of the water body. Thus, EPT are at the heart of many freshwater quality assessments around the world and are included in many regulatory frameworks, such as the Water Framework Directive (Directive 2000/60/EC, but see also Borja, Miles, Occhipinti-Ambrogi, & Berg, 2009) or the Canadian Aquatic Biomonitoring Network (CABIN, Reynoldson, Logan, Pascoe, & Thompson, 2003).

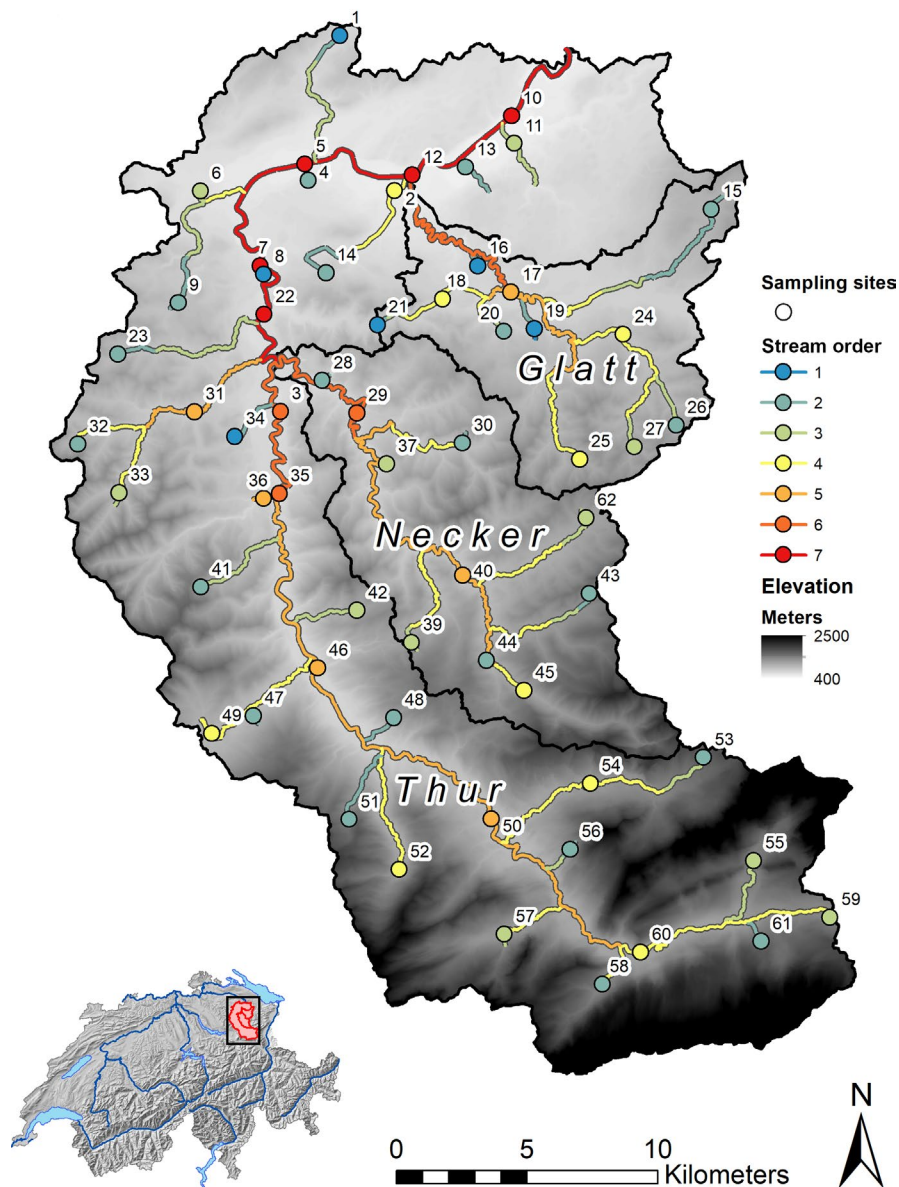
Classically, EPT are collected with a standardized kicknet method (Barbour et al., 1999). Taxa are then identified under a dissecting microscope, which is time-consuming and therefore costly. Taxon richness is the most fundamental approach to estimate biodiversity and is still widely used. Even though the number of taxa is a convincingly intuitive proxy of biodiversity and the basis of many fundamental concepts in ecology, it is a difficult variable to measure accurately (Gotelli & Colwell, 2011; Purvis & Hector, 2000). Diversity can be further divided into different metrics, such as local richness, regional richness, and between-site dissimilarity (also known as alpha, gamma, and beta diversity, respectively). Importantly, the latter metric also includes information on taxonomic identity. The emerging technique of environmental DNA (eDNA) metabarcoding is expected to become a complementary or even replacement method of classical morphological identification (Deiner et al., 2017;

Hajibabaei, Shokralla, Zhou, Singer, & Baird, 2011; Lawson Handley, 2015). About a decade ago, the first study was published on the detection of species through DNA in an environmental sample (Ficetola, Miaud, Pompanon, & Taberlet, 2008). With the implementation of high-throughput sequencing, which allowed not only detection of single species but also detection of whole communities, eDNA metabarcoding has been proposed to revolutionize biodiversity assessments (Bohmann et al., 2014; Lawson Handley, 2015; Shokralla, Spall, Gibson, & Hajibabaei, 2012). As with every novel technique, eDNA metabarcoding creates new opportunities but also challenges, especially in terms of recognizing what information it provides and how it compares to previously implemented and established methodologies (Blackman et al., 2019).

Comparisons between eDNA and traditional morphological methods have hitherto mostly focused on either local or regional richness comparisons. In river systems, previous studies have generally detected higher taxon richness with eDNA than kicknet approaches (Civade et al., 2016; Olds et al., 2016; Valentini et al., 2016). Those results were likely due to eDNA at one location integrating taxon information from upstream reaches via downstream transportation of eDNA (Deiner & Altermatt, 2014; Deiner, Fronhofer, Mächler, Walser, & Altermatt, 2016; Pont et al., 2018). This suggests that traditional techniques represent a more accurate local estimate, while eDNA integrates information across space. In that context, any comparison of the two techniques will be influenced by the spatial scale of the study. However, we still do not know whether findings are directly comparable, complementary, or different across different spatial scales and across different components of biodiversity, due to the specific spatial properties of kicknet being a local sampling technique versus eDNA reflecting more an integrated sample. A detailed understanding is needed to make decisions on how to sample biodiversity in complex landscapes and to compare both local and regional measures. This is particularly relevant in river landscapes, where the typical underlying dendritic network structure is known to affect biodiversity (Altermatt, 2013; Altermatt et al., 2013; Carrara, Altermatt, Rodriguez-Iturbe, & Rinaldo, 2012; Harvey et al., 2018; Tonkin et al., 2018).

In our study, we compared different measures of biodiversity of EPT sampled traditionally (i.e., by kicknet) or by eDNA, using a spatially structured approach that representatively covered a river network in a 740-km² catchment. We analyzed how these two different approaches capture the facets of biodiversity at the level of alpha (local site), beta (between sites), and gamma diversity (catchment level). Gamma diversity information was supplemented with all historically available data. We hypothesize that (a) revealed gamma diversity would be similar in the two

FIGURE 1 Field sites in the river Thur catchment in northwestern Switzerland (insert at bottom right). Colors are coding for stream order (first- to seventh-order streams: blue, cyan, green, yellow, orange, orange-red, and red, respectively). Black lines indicate the three major subcatchments: Thur, Necker, and Glatt. Data source: swisstopo: VECTOR200 (2017), DEM25 (2003), SWISSTLM3D (2018); BAFU: EZG (2012); Bundesamt für Landestopographie (Art.30 Geo IV): 5,704,000,000, reproduced by permission of swisstopo/ JA100119



contemporary methods; (b) alpha diversity estimated by eDNA is higher compared to kicknet sampling and morphological analysis; and (c) beta diversity between sites is driven by nestedness for eDNA samples but should be less pronounced for kicknet samples. The latter two hypotheses are expected to be driven by the transport of eDNA in the river system. Given that taxon richness, community composition, and taxon identity are among the most commonly studied biodiversity variables, we discuss the design of biodiversity monitoring with eDNA in dendritic river networks.

2 | MATERIALS AND METHODS

We studied a river network in a 740-km² catchment containing 61 sampling sites in the upper river Thur in northeastern Switzerland

(Figure 1, Table S1). The catchment comprises three main river stems: Thur, Glatt, and Necker, the latter two draining into the Thur. In a sampling campaign conducted from 11 June to 22 June 2016, we collected eDNA and benthic invertebrate kicknet samples, with the two sampling methods performed at each site within a two-day window. To characterize the position of sites in the network, we extracted stream order, catchment area, and the mean annual discharge data for each site from existing databases (BAFU, 2013, 2014; Pfandler & Schoenenberger, 2013).

2.1 | Historical data

We obtained long-term biodiversity data on gamma diversity in our catchment from the Centre Suisse de la Cartographie de la Faune (CSCF). These data include all EPT species ever recorded in the

whole catchment over the time period 1981–2016. The data are of various sampling origins, but of high quality, thus giving a highly robust and reliable cumulative estimate of EPT genus richness (and the respective EPT genus identity) at the whole catchment scale. The cumulative data consist of 3,467 individual records based on observations of the species in an area of the catchment, which we then converted into genus richness.

2.2 | Contemporary kicknet data

We collected benthic macroinvertebrates based on three-minute kicknet sampling applied to three microhabitats present at a given site (Barbour et al., 1999). Leaves and debris were removed from the sample, and the remaining material was pooled and stored in 96% molecular grade ethanol. In the laboratory, all EPT individuals were identified with a microscope to species level. A few taxa, only present as early instar larva or containing cryptic species, were grouped in predefined complexes, subsequently treated at the genus level. We could not assess EPT taxa at one site due to the loss of a sample.

2.3 | eDNA filtration in the field

At each site, we sampled three times 250 ml of river water, each on a separate GF/F filter (pore size 0.7 μm , Whatman International Ltd., Maidstone, UK; for more details, see supplementary materials and Mächler, Osathanunkul, & Altermatt, 2018). We collected eDNA samples about 5–10 m upstream of the kicknet sampling to minimize cross-contamination. We directly sampled water with a disposable syringe out of the water body; for more detailed sampling procedure, see also Mächler et al. (2018). Samples were stored in a Styrofoam box equipped with cooling elements until we came back from the field (no longer than 9 hr). Thereafter, the samples were stored at -20°C until further processing. On each field day, we performed a replicated filter control (FC) that consisted of 250 ml of nanopore water previously treated with UVC light and sealed in the clean laboratory facilities. We filtered the FC in the field before any sampling site was visited in order to check whether the reused material (i.e., filter housings and syringes) was clean. In total, we generated 11 such filter controls, each consisting of three replicates and thus resulting in 33 filter controls. Zero-radius operational taxonomic units (thereafter called ZOTUs) found in at least two replicates of a filter control from the same date were removed from all samples for the further analysis. Further information on filtration, eDNA facilities, and material preparation can be found in the supplementary file.

2.4 | Extraction and library preparation

Detailed information about the extraction and library preparation can be found in the supplementary file. In short, we used the DNeasy Blood and Tissue Kit (Qiagen GmbH) to extract the DNA from eDNA samples in a randomized order, also including extraction controls (EC) and filter controls (FC). Finally, DNA was eluted in 75 μl AE buffer at the end of the extraction and cleaned with One Step

PCR Inhibitor Removal Kit (Zymo Research). We used the Illumina MiSeq dual-barcoded two-step PCR amplicon sequencing protocol. We targeted the short COI barcoding region specified by Leray et al. (2013) and Geller, Meyer, Parker, & Hawk (2013). The first PCR was performed with primers that contained an Illumina adaptor-specific tail, a heterogeneity spacer, and the amplicon target site (see Table S2). On each of the 96-well PCR plates, we included a negative (NC) and a positive PCR control (PC). The negative control consisted of 5 μl molecular biology grade Sigma water (Merck AG), and the positive control consisted of 4 μl of an eDNA sample and 1 μl (0.01 ng/ μl) of an artificial dummy DNA (a randomly generated double-stranded DNA sequence of 313 bp in length with matched primer region; see supplementary information). We pooled three PCR replicates per sample and cleaned it with SPRI beads (Applied Biological Materials Inc.). For the second PCR, we used the Nextera XT Index Kit v2 (Illumina) to index each sample in a PCR with 10 cycles and cleaned afterward the index reaction with SPRI beads again. We quantified each sample with the Spark 10M Multimode Microplate Reader (Tecan Group Ltd.) by using the Qubit dsDNA BR assay (Thermo Fisher) and pooled them in equimolar parts into a final pool that we cleaned again with SPRI beads. All controls (FC, EC, PC, NC) were run alongside the samples and were pooled according to their concentrations. Controls that were too low to quantify were pooled into the second lowest concentrated pool with 10 μl , equal to the volume of the lowest sample in the respective pool. The libraries were added at 16 pM concentration, and PhiX control was added at a 10% concentration. A paired-end 600 cycle (2×300 nt) sequencing was performed on an Illumina MiSeq (MiSeq Reagent Kit v3, 300 cycles) following the manufacturer's run protocols (Illumina). To increase the sequencing depth, a second run of the same pooled libraries was conducted.

2.5 | Bioinformatic data processing

After the two successful Illumina MiSeq runs, the data were demultiplexed and the quality of the reads was checked with FastQC (Andrews, 2015). Raw reads were end-trimmed (usearch, version 10.0.240, R1:30nt, R2:50nt) and merged with an overlap of min 15 bp max 300 bp (Flash, version 1.2.11). Next, the primer sites were removed (full length, no mismatch allowed (cutadapt, version 1.12)), and thereafter, the data were quality-filtered (prinseq-lite, version 0.20.4) using the following parameters: size range (100–500), GC range (30–70), mean quality (20), and low complexity filter dust (30). In a next step, UNOISE3 (usearch, version 10.0.240) was used to determine amplicon sequence variants (ZOTUs). UNOISE3 has a build-in error correction to reduce the influence of sequencing errors (Edgar, 2016). An additional clustering at 99% sequence identity was performed to reduce sequence diversity and to account for possible amplification errors in the first PCR. The resulting ZOTUs were checked for stop codons using the invertebrate mitochondrial code, to ensure an intact open reading frame. This resulted in 27 M reads corresponding to 11,313 ZOTUs (Table S3). In a first step, all COI-related sequences were downloaded from NCBI. In a next step,

the ZOTUs were blasted against the NCBI COI collection and the top five best blast hits were extracted. We used the R packages “taxize” (Chamberlain & Szöcs, 2013, version 0.9.7) and “rentrez” (Winter, 2017, version 1.2.2) to obtain taxonomic labels based on the accession numbers. The fasta headers of the selected COI sequences were modified with the taxonomic labels in order to index the database. As a final step, the ZOTUs were assigned to taxa using Sntax (usearch, version 10.0.240) and the NCBI COI-based reference. The annotations of taxonomic problematic or missing predictions were verified later using Sntax and the MIDORI references (Machida, Leray, Ho, & Knowlton, 2017).

2.6 | Data analysis

Our analysis was based on the following strategy: First, we confirmed that the two Illumina runs could be combined, and second, we cleaned the sequencing data and selected only ZOTUs that were assigned to an EPT order (see detailed information in the supplementary file). For individual sites, ZOTUs were only counted if they were present in at least two of the three independent replicates (Figure S1), which is a highly stringent assumption and conservative with respect to detection of taxa. Thereafter, we were able to analyze various diversity measures to identify congruence and differences between eDNA and kicknet sampling approaches: (a) gamma, (b) alpha, (c) beta diversity, and (d) between-method community dissimilarity. All statistical analyses were performed using R (R Development Core Team 2008, version 3.5.2).

2.6.1 | Gamma diversity

We used the R package “venneuler” (Wilkinson & Urbanek, 2011, version 1.1-0) to draw Venn diagrams for gamma richness of historic, eDNA, and kicknet data. We used the R package “vegan” (Oksanen et al., 2011, version 2.5-4) to calculate two different taxon accumulation curves of the two sampling methods over the whole catchment: the first one with “random” method and the second in “collector” method where we ordered the samples from down- to upstream.

2.6.2 | Alpha diversity

To compare diversity estimates delivered by the two methods, we used the R packages “phyloseq” (McMurdie & Holmes, 2013, version 1.24.2) to calculate richness. With Pearson's correlation test, we identified whether richness measures at sampling sites correlate between the two contemporary methods. We then tested whether genus richness of the two methods increased with discharge, using a linear model.

2.6.3 | Beta diversity

We used Sørensen dissimilarity as a measure of beta diversity, based on the presence/absence data. With the R package “betapart” (Baselga, Orme, Villeger, De Bortoli, & Leprieur, 2017, version

1.5.1), we calculated Sørensen dissimilarity, which can be further partitioned into nestedness and turnover components, allowing us to distinguish dissimilarity arising through embedment (i.e., loss) or replacement of species (Baselga, 2010; Baselga et al., 2017). To observe how beta diversity measures relate to stream distance, we extracted distances between sites and nodes (junctions where two rivers join) from GIS data (swisstopo) and added these as edge weights. We then constructed the adjacency matrix representing our fluvial network consisting of edges and vertices with the R package “igraph” (Csardi & Nepusz, 2006, version 1.2.4) to calculate stream distance between flow-connected sampling points. We used linear models to test whether distance and the difference in stream order of the compared sites explain patterns in the beta diversity measures. We compared models including a null model (by fitting a constant to test the null hypothesis that the slope is zero), models containing only one of the explanatory variables, or both variables (with and without interaction), and performed model averaging in order to calculate relative variable importance (R package “MuMIn”, Barton, 2009, version 1.43.6). We additionally calculated Sørensen dissimilarity and checked for differences among stream orders. First, we tested for heterogeneous variance with a Bartlett test, and if it was significant, we performed a Kruskal–Wallis test to identify whether there was at least one difference in means. If this was true, then we followed a multiple mean comparison post hoc test on rank sums (R package “pgirmess”, Giraudoux, 2018, version 1.6.9).

2.6.4 | Between-method community dissimilarity

We also calculated Sørensen dissimilarity and its two components, nestedness and turnover, between eDNA and kicknet samples for each individual site to detect discrepancies in community composition between the two contemporary methods.

3 | RESULTS

3.1 | Gamma diversity

At the regional scale (i.e., the whole catchment level), 96 different EPT genera were historically documented. We found 47 EPT genera with our kicknet samples and 42 genera with our eDNA samples, reflecting 46% and 42% of the historically established taxon richness, respectively (Figure 2 and Table S4). A high proportion of these sampled taxa were already present in the historic records (94% and 95%, respectively). Thirty-six of these EPT genera were detected with both the kicknet method and the eDNA method, reflecting a 62% overlap of the two methods. Both methods also detected a similar additional proportion of taxa found by one method only, but present in the historic dataset (Figure 2). Finally, we found four genera with eDNA, kicknet sampling, or both approaches that were not previously listed in the historic data. All of these four genera occur at the border of our studied catchment, and due to more recent range expansions rare, single appearances within the catchment are possible. Separate taxon accumulation curves (accumulating gamma richness

with number of sites included) for the kicknet and the eDNA methods were qualitatively similar (Figure S2A), based on visual comparison of the curves and their 95% confidence band. This pattern remained similar even if sites were accumulated in the order from the most downstream to the most upstream sites (Figure S2B).

3.2 | Alpha diversity

At the local scale, the two contemporary methods revealed similar genus richness (eDNA $M = 10.22$, $SD = 4.2$; kicknet $M = 10.47$, $SD = 3.1$), and the detected richness values were positively correlated ($r(58) = .42$, $p < .001$; Figure 3). As eDNA is transported through the river network, we found a positive relationship between genus richness and discharge for eDNA ($\beta = .537$, $t(58) = 2.848$, $p = .006$) but not for kicknet ($\beta = .073$, $t(58) = 0.495$, $p = .62$); however, the adjusted R^2 was relatively low (eDNA $R^2 = .101$; Figure 4).

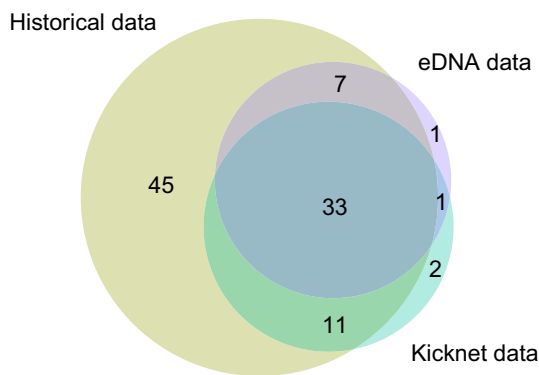


FIGURE 2 Overlap of EPT genera in the three different datasets over the whole catchment. Bubble size is proportionate to the number of genera detected

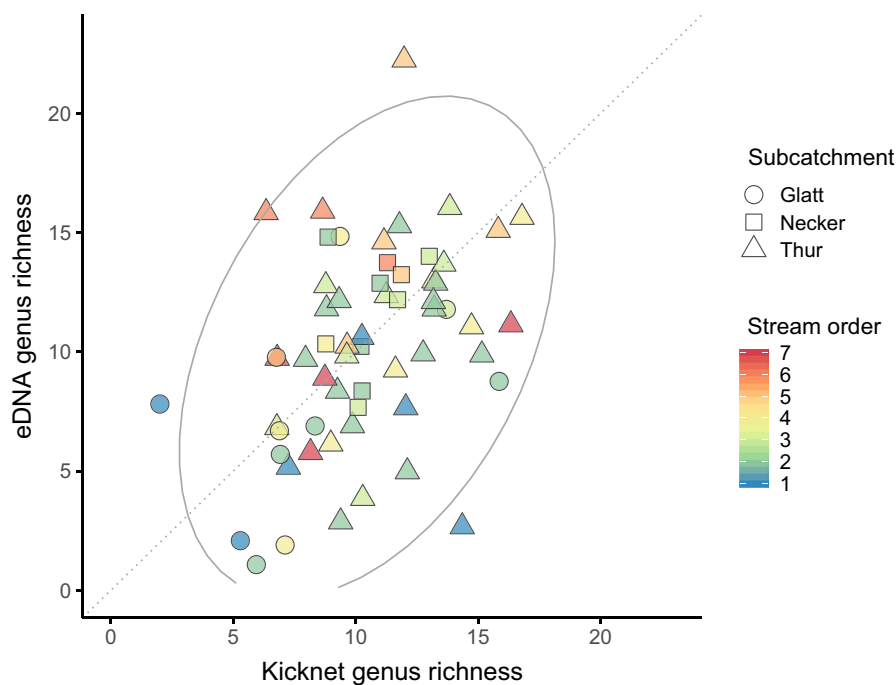


FIGURE 3 Detected richness of EPT genera comparing kicknet versus eDNA sampling. The gray line indicates the confidence ellipse based on multivariate normal distribution, and the dotted line is the 1:1 line. Colors and shapes of the individual data points are according to stream order and the sampling sites' subcatchment, respectively. Points are minimally jittered due to overlapping cases

3.3 | Beta diversity

Overall, we found comparable Sørensen dissimilarity between flow-connected sites for eDNA and kicknet. For both methods, the turnover component contributed more to the dissimilarity than nestedness-related components (Figure 5; see Table S5 for information on detected genera per site), which was more pronounced for eDNA than kicknet. The analysis for the relative importance of variables showed that differences in stream order were generally more important for all beta diversity measures; however, for turnover of both eDNA and kicknet, pairwise distance between sites showed only partially lower importance compared to the differences in stream order (Table S6). Both methods showed significant differences in mean Sørensen dissimilarity among stream orders, and we found significant group differences for the post hoc mean comparisons in stream orders (Figure 6 and Table S7).

3.4 | Between-method community dissimilarity

We found an intermediate discrepancy in the community compositions described by the two contemporary methods ($M = 0.48$, $SD = 0.14$, Figure S3), and partitioning this difference into nestedness and turnover components indicates that turnover contributes more to the differences in detected EPT genera.

4 | DISCUSSION

By using a spatially structured approach covering a major river network, we found similar patterns of diversity measures of EPT sampled with kicknet and eDNA. Using a unique historically assembled overview of cumulative, "true" gamma diversity within the study region,

FIGURE 4 Richness of eDNA and kicknet samples plotted against the logarithmic annual mean discharge. The gray line gives the significant linear regression line for eDNA only due to nonsignificance for kicknet genus richness. Colors are according to stream order, and the shape indicates to what subcatchment the site belongs to. Points are minimally jittered due to overlapping cases

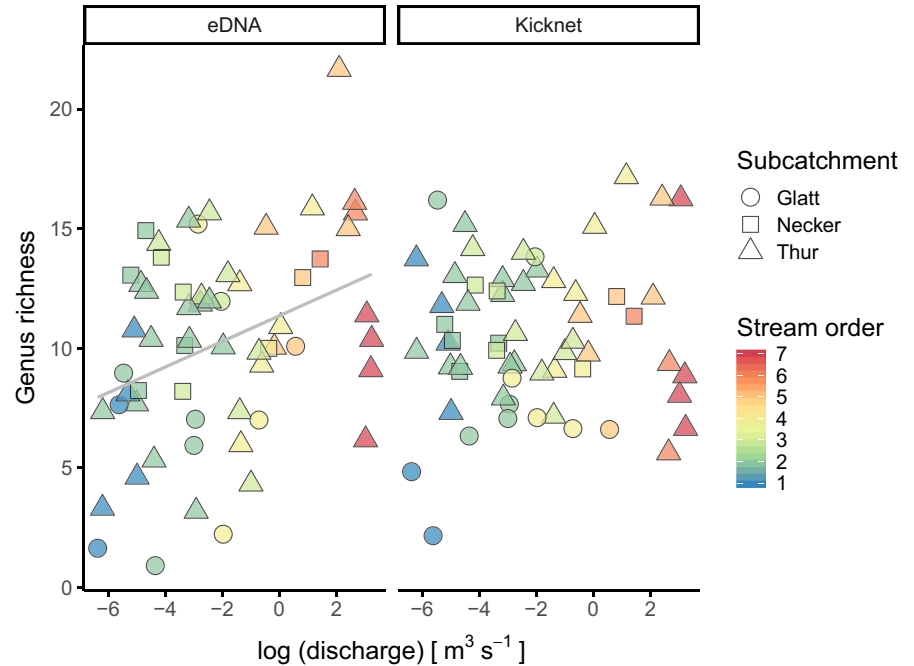
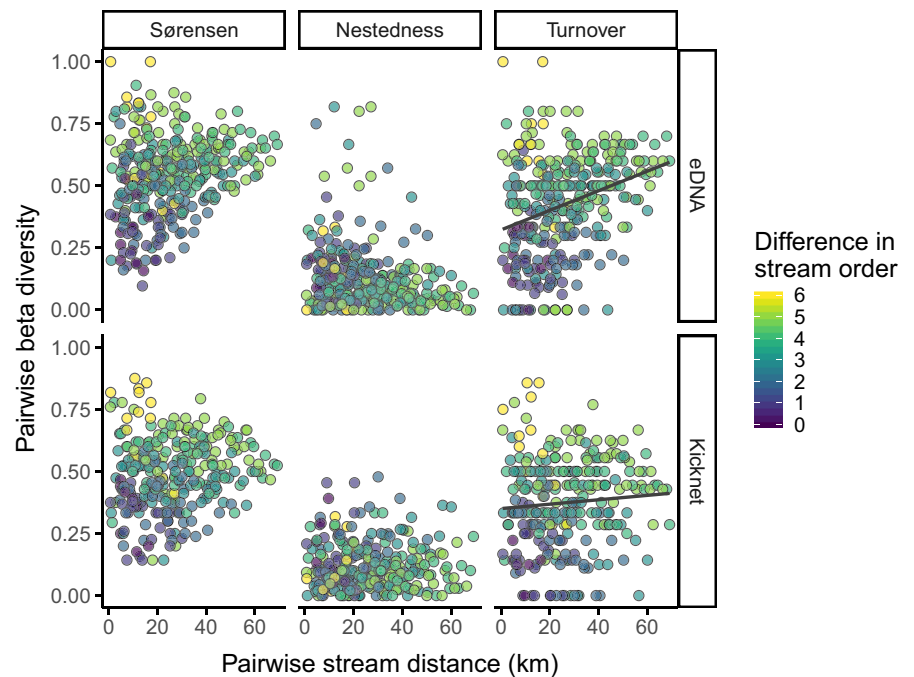


FIGURE 5 Pairwise beta diversity against pairwise stream distance for flow-connected sites only. Beta diversity is calculated based on the Sørensen dissimilarity and is split into the two components of nestedness and turnover. The color gradient indicates the difference in stream orders of the pairwise compared sites, and solid lines indicate the regression line in cases where stream distance showed relative importance too



we were able to put our contemporary samples in a historic context. We found a quantitatively similar overlap between each contemporary approach and historic gamma diversity, in accordance with other studies comparing eDNA with long-term data in freshwater systems (e.g., Hänfling et al., 2016; Valentini et al., 2016). Given that the historic dataset covers several decades (1981–2016), we do not expect that all taxa are still present in the catchment at the time of this study (2016) due to changes in distribution or local extinctions, and we would also expect some new taxa to appear. Thus, the observed 42% overlap between a single snapshot sampling campaign and the gamma

diversity obtained by cumulative sampling efforts over almost four decades is relatively high. Surprisingly, taxon accumulation curves for eDNA and kicknet sampling were not significantly different, although we expected that downstream transport of DNA would contribute to a faster increase and saturation of genera for eDNA compared to kicknet sampling. Our approach suggests that a single eDNA sampling campaign may cover large parts of historically detected gamma diversity. This indicates that eDNA could be used as a new tool for rapid network-level richness analyses and biodiversity assessments. Such systematic BioBlitz sampling (Laforest et al., 2013; Lundmark, 2003)

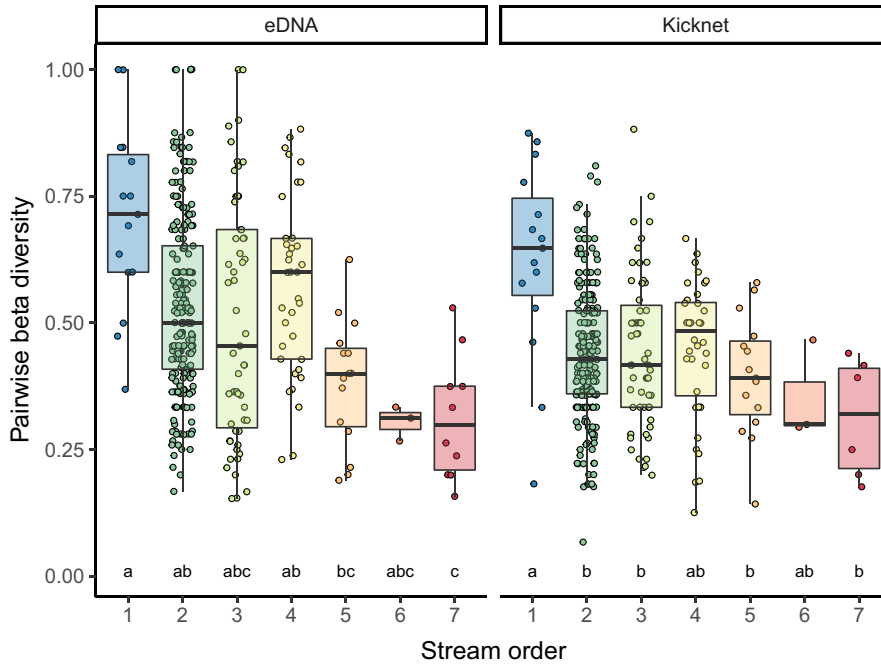


FIGURE 6 Pairwise beta diversity (Sørensen dissimilarity) within stream orders. Stream orders with the same letter are not significantly different according to multiple mean comparison test after Kruskal–Wallis; see Table S7 for the statistical results

across hitherto understudied complete river catchments may be a promising avenue, since minimally trained people without any taxonomic expertise can collect great parts of regional or even landscape richness in a rapid time frame with this method.

We also found a reasonable congruency in local alpha diversity of the two contemporary methods and identified a new dependency of eDNA estimates on discharge level. Overall, local richness estimates of eDNA and kicknet sampling are highly comparable. This comparability may be strengthened by our highly stringent inclusion criteria for eDNA estimates, which are more conservative than those used in previous studies that detected higher richness with eDNA compared to traditional methods (e.g., Deiner et al., 2016; Valentini et al., 2016). In addition, we used a COI barcoding primer targeting a broad taxonomic range, which may also have a lower detection rate for specific taxonomic groups. In near future, the forthcoming design and use of EPT-specific primers or the completion of EPT sequence references should reduce the current drawbacks of eDNA methods regarding taxonomic identification. For eDNA, we found a positive relationship between richness and discharge, which was not the case for kicknet data and could be attributed to eDNA integrating biodiversity detection across space due to downstream transport (Deiner & Altermatt, 2014; Li et al., 2018; Pont et al., 2018). Alternatively, richness indeed increased with discharge (i.e., downstream), but the slightly suboptimal sampling period (summer) and the simplified kicknet protocol we used was an inappropriate technique for sampling larger streams, and thus obscured the relationship. Both aspects reduce detection of genera with the traditional methods, as some species might be missed due to reduced sampling effort or immature larval stages hampering identification. Surprisingly, the 7th stream order sites diverge from this pattern, potentially because we could only access part of these wide river cross sections, and sampling was restricted to the river edge where

less mixing occurs, where more extensive sampling may be needed with eDNA (Bylemans et al., 2018). Also, recent studies indicate that eDNA is not evenly distributed in the water column (Macher & Leese, 2017), and it is still unclear how spatial variance in structures, such as riffles and ponds, is affecting the mixing of the water column and thus the equal detection of eDNA along the water column. We speculate that only in smaller streams (1st to 5th order), one or two samples from the edge or in the center adequately reflect the eDNA distribution across the river transect, while in larger rivers, multiple samples across the cross section may be recommended.

We found that pairwise beta diversity (Sørensen dissimilarity) at the local scale was similarly assessed by the two methods, which is congruent to findings by Li et al. (2018). Despite differences among sites in Sørensen dissimilarity, the turnover component (i.e., species replacement) contributes more to the dissimilarity than nestedness for both methods but is even more pronounced for eDNA than kicknet. Turnover indicates that species are replaced between the sites and implies that transportation of eDNA is not the main mechanisms driving differences; otherwise, nestedness would be expected to be stronger. Barnes & Turner (2016) presented many processes (e.g., degradation, re-suspension, or fragmentation) that influence eDNA in the environment and therefore challenge our mechanistic understanding. Thus, it remains unclear whether the detected differences stem from ecological or methodological variation.

Studies on diversity patterns have long focused on a linear view of streams. But it is now increasingly acknowledged that the underlying network structure plays a significant role in shaping species distributions (Carrara et al., 2012; Harvey & Altermatt, 2019; Harvey et al., 2018; Holyoak, Leibold, & Holt, 2005; Seymour, Fronhofer, & Altermatt, 2015; Tonkin et al., 2018). While experimental laboratory studies and field surveys have found general patterns of diversity distribution in river landscapes, we do not know whether eDNA will lead

to similar findings or not. Multiple studies showed that there is higher beta diversity among headwaters compared to downstream reaches (Altermatt et al., 2013; Carrara et al., 2012; Finn, Bonada, Múrria, & Hughes, 2011). When comparing beta diversity within stream orders, we detect differences between groups of stream orders for both methods. These differences are mainly between beta diversity of large stream orders and small stream orders, as expected by theory.

Overall, for local composition, we see some discrepancy of the two methods for community composition at specific sites. This discrepancy is driven by turnover, indicating that detection of different species with the two methods differs and is not due to the integration of eDNA over distance. We see several mechanisms that could cause this difference between the two methods. First, bias introduced in the laboratory process may have hampered the detection of species that were actually present (e.g., through primer bias (Elbrecht & Leese, 2017), PCR stochasticity (Leray & Knowlton, 2017), sequencing depth). The design of specific EPT primers may improve comparison and deliver even a better overlap than a universal eukaryotic primer as we used in this study. Second, DNA shedding rates, densities, and activity can differ between genera (Bylemans et al., 2017; de Souza, Godwin, Renshaw, & Larson, 2016; Sassoubre, Yamahara, Gardner, Block, & Boehm, 2016) and affect the eDNA detection. Also, it remains unknown how habitat preferences of different genera affect detection due to limited mixing or flow of the preferred habitat. Third, it is possible that DNA got resuspended from sediments through the mixing of the water column or other disturbances (Jerde et al., 2016; Shogren et al., 2016, 2017), resulting in a signal of locally extinct taxa. However, we have no indication from the historic data that genera detected only with eDNA have been absent in the catchment for a longer time.

The distribution of biodiversity and indicator species is of interest to many fields in ecology, from basic research and theory to applied projects of biodiversity conservation and ecosystem assessments. Our work identifies novel opportunities of eDNA as a reliable tool to detect biodiversity patterns, similar to traditional kicknet sampling in riverine networks. Our findings show high robustness of the method, allowing its use for rapid richness analyses and offering the potential to do quick assessments of biodiversity with untrained collectors for BioBlitz campaigns or citizen science projects. However, if the goal is to extend previous biomonitoring or biodiversity datasets with eDNA sampling, the spatial scale must be considered when designing sampling schemes to detect taxon richness.

ACKNOWLEDGMENTS

Data analyzed in this paper were generated in collaboration with the Genetic Diversity Centre (GDC), ETH Zurich. We would like to thank Simon Flückiger and Sereina Gut for help in the laboratory and Rosi Sieber for support with the GIS data. Special thanks go to Rosetta Blackman, Kristy Deiner, Hanna Hartikainen, and two anonymous reviewers for comments on the manuscript. We thank

the Centre Suisse de Cartographie de la Faune (CSCF)/InfoFauna for the historic data on EPT in the Thur catchment. Funding is from the Swiss National Science Foundation Grants No PP00P3_179089 and 31003A_173074, the Velux Foundation, and the University of Zurich Research Priority Program "URPP Global Change and Biodiversity" (to FA), and the Forschungskredit Grant of the University of Zürich (to IG). This is publication ISEM-2019-157 of the Institut des Sciences de l'Evolution—Montpellier.

CONFLICT OF INTEREST

All authors declare that there is no conflict of interest regarding the publication of this article.

AUTHOR CONTRIBUTIONS

EM, CJL, RA, EF, IG, EH, JCW, and FA conceived the ideas and designed methodology; EM, CJL, RW, RA, EF, IG, EH, SH, JCW, and FA collected the data; EM, JCL, RW, and JCW analyzed the data; EM and FA led the writing of the manuscript. All authors contributed to the manuscript and gave final approval for publication.

DATA AVAILABILITY STATEMENT

Sequencing data is publicly available on European Nucleotide Archive under the study accession numbers (secondary accession number) PRJEB31920 (ERP114535) and PRJEB33506 (ERP116301).

ORCID

Elvira Mächler  <https://orcid.org/0000-0003-0430-6173>

Chelsea J. Little  <https://orcid.org/0000-0003-2803-7465>

Roman Alther  <https://orcid.org/0000-0001-7582-3966>

Emanuel A. Fronhofer  <https://orcid.org/0000-0002-2219-784X>

Isabelle Gounand  <https://orcid.org/0000-0002-0675-3973>

Eric Harvey  <https://orcid.org/0000-0002-8601-7326>

Florian Altermatt  <https://orcid.org/0000-0002-4831-6958>

REFERENCES

- Altermatt, F. (2013). Diversity in riverine metacommunities: A network perspective. *Aquatic Ecology*, 47(3), 365–377. <https://doi.org/10.1007/s10452-013-9450-3>
- Altermatt, F., Seymour, M., & Martinez, N. (2013). River network properties shape α -diversity and community similarity patterns of aquatic insect communities across major drainage basins. *Journal of Biogeography*, 40(12), 2249–2260. <https://doi.org/10.1111/jbi.12178>
- Andrews, S. (2015). FASTQC A Quality Control tool for High Throughput Sequence Data. Babraham Institute. Retrieved from <http://www.bioinformatics.babraham.ac.uk/projects/fastqc/Help/3AnalysisModules/>
- BAFU (2013). *Flussordnungszahl (FLOZ)*. CH-3003 Bern, Switzerland: Bundesamt für Umwelt (BAFU).

- BAFU (2014). *Gewässerabschnittsbasierte Einzugsgebietsgliederung der Schweiz GAB-EZGG-CH*. CH-3003 Bern, Switzerland: Bundesamt für Umwelt (BAFU).
- Barbour, M. T., Gerritsen, J., Snyder, B. D., & Stribling, J. B. (1999). *Rapid bioassessment protocols for use in streams and wadeable rivers*. Washington, DC: USEPA.
- Barnes, M. A., & Turner, C. R. (2016). The ecology of environmental DNA and implications for conservation genetics. *Conservation Genetics*, 17(1), 1–17. <https://doi.org/10.1007/s10592-015-0775-4>
- Barton, K. (2009). *MuMIn: multi-model inference, R package version 0.12.0*. Retrieved from <http://R-Forge.r-Project.Org/Projects/Mumin/>
- Baselga, A. (2010). Partitioning the turnover and nestedness components of beta diversity. *Global Ecology and Biogeography*, 19(1), 134–143. <https://doi.org/10.1111/j.1466-8238.2009.00490.x>
- Baselga, A., Orme, D., Villeger, S., De Bortoli, J., & Leprieux, F. (2017). *Partitioning beta diversity into turnover and nestedness components. Package Betapart, Version, 1.4-1*.
- Blackman, R., Mächler, E., Altermatt, F., Arnold, A., Beja, P., Boets, P., ... Deiner, K. (2019). Advancing the use of molecular methods for routine freshwater macroinvertebrate biomonitoring—the need for calibration experiments. *Metabarcoding and Metagenomics*, 3, e34735. <https://doi.org/10.3897/mbmg.3.34735>
- Bohmann, K., Evans, A., Gilbert, M. T. P., Carvalho, G. R., Creer, S., Knapp, M., ... de Bruyn, M. (2014). Environmental DNA for wildlife biology and biodiversity monitoring. *Trends in Ecology & Evolution*, 29(6), 358–367. <https://doi.org/10.1016/j.tree.2014.04.003>
- Borja, A., Miles, A., Occhipinti-Ambrogi, A., & Berg, T. (2009). Current status of macroinvertebrate methods used for assessing the quality of European marine waters: Implementing the Water Framework Directive. *Hydrobiologia*, 633(1 LB-Borja2009), 181–196. <https://doi.org/10.1007/s10750-009-9881-y>
- Bylemans, J., Furlan, E. M., Hardy, C. M., McGuffie, P., Lintermans, M., & Gleeson, D. M. (2017). An environmental DNA-based method for monitoring spawning activity: A case study, using the endangered Macquarie perch (*Macquaria australasica*). *Methods in Ecology and Evolution*, 8(5), 646–655.
- Bylemans, J., Gleeson, D. M., Lintermans, M., Hardy, C. M., Beitzel, M., Gilligan, D. M., & Furlan, E. M. (2018). Monitoring riverine fish communities through eDNA metabarcoding: Determining optimal sampling strategies along an altitudinal and biodiversity gradient. *Metabarcoding and Metagenomics*, 2, e30457. <https://doi.org/10.3897/mbmg.2.30457>
- Cardinale, B. J., Duffy, J. E., Gonzalez, A., Hooper, D. U., Perrings, C., Venail, P., ... Naeem, S. (2012). Biodiversity loss and its impact on humanity. *Nature*, 486(7401), 59–67. <https://doi.org/10.1038/nature11148>
- Carrara, F., Altermatt, F., Rodriguez-Iturbe, I., & Rinaldo, A. (2012). Dendritic connectivity controls biodiversity patterns in experimental metacommunities. *Proceedings of the National Academy of Sciences*, 109(15), 5761–5766. <https://doi.org/10.1073/pnas.1119651109>
- Chamberlain, S. A., & Szöcs, E. (2013). taxize: taxonomic search and retrieval in R. *F1000Research*, 2, 191. <https://doi.org/10.12688/f1000research.2-191.v1>
- Chapin, F. S., Sala, O. E., Burke, I. C., Grime, J. P., Hooper, D. U., Lauenroth, W. K., ... Tilman, D. (1998). Ecosystem consequences of changing biodiversity. *BioScience*, 48(1), 45–52. <https://doi.org/10.2307/1313227>
- Civade, R., Dejean, T., Valentini, A., Roset, N., Raymond, J.-C., Bonin, A., ... Pont, D. (2016). Spatial representativeness of environmental DNA metabarcoding signal for fish biodiversity assessment in a natural freshwater system. *PLoS One*, 11(6), e0157366. <https://doi.org/10.1371/journal.pone.0157366>
- Csardi, G., & Nepusz, T. (2006). The igraph software package for complex network research. *InterJournal, Complex Systems*, 1695(5), 1–9.
- de Souza, L. S., Godwin, J. C., Renshaw, M. A., & Larson, E. (2016). Environmental DNA (eDNA) detection probability is influenced by seasonal activity of organisms. *PLoS One*, 11(10), e0165273. <https://doi.org/10.1371/journal.pone.0165273>
- Deiner, K., & Altermatt, F. (2014). Transport distance of invertebrate environmental DNA in a natural river. *PLoS One*, 9(2), e88786. <https://doi.org/10.1371/journal.pone.0088786>
- Deiner, K., Bik, H. M., Mächler, E., Seymour, M., Lacoursiere-Roussel, A., Altermatt, F., ... Bernatchez, L. (2017). Environmental DNA metabarcoding: Transforming how we survey animal and plant communities. *Molecular Ecology*, 26(21), 5872–5895. <https://doi.org/10.1111/mec.14350>
- Deiner, K., Fronhofer, E. A., Mächler, E., Walser, J. C., & Altermatt, F. (2016). Environmental DNA reveals that rivers are conveyor belts of biodiversity information. *Nat Commun*, 7, 12544. <https://doi.org/10.1038/ncomms12544>
- Dornelas, M., Magurran, A. E., Buckland, S. T., Chao, A., Chazdon, R. L., Colwell, R. K., ... Kosnik, M. A. (2013). Quantifying temporal change in biodiversity: Challenges and opportunities. *Proceedings of the Royal Society B: Biological Sciences*, 280(1750), 20121931.
- Dudgeon, D., Arthington, A. H., Gessner, M. O., Kawabata, Z.-I., Knowler, D. J., Lévêque, C., ... Sullivan, C. A. (2006). Freshwater biodiversity: Importance, threats, status and conservation challenges. *Biological Reviews*, 81(2), 163–182. <https://doi.org/10.1017/S1464793105006950>
- Edgar, R. C. (2016). UNOISE2: Improved error-correction for Illumina 16S and ITS amplicon sequencing. *BioRxiv*, 81257. <https://doi.org/10.1101/081257>
- Elbrecht, V., & Leese, F. (2017). Validation and development of COI metabarcoding primers for freshwater macroinvertebrate bioassessment. *Frontiers in Environmental Science*, 5, 11. <https://doi.org/10.3389/fenvs.2017.00011>
- Ficetola, G. F., Miaud, C., Pompanon, F., & Taberlet, P. (2008). Species detection using environmental DNA from water samples. *Biology Letters*, 4(4), 423–425. <https://doi.org/10.1098/rsbl.2008.0118>
- Finn, D. S., Bonada, N., Múrria, C., & Hughes, J. M. (2011). Small but mighty: Headwaters are vital to stream network biodiversity at two levels of organization. *Journal of the North American Benthological Society*, 30(4), 963–980. <https://doi.org/10.1899/11-012.1>
- Gaston, K. J. (2000). Global patterns in biodiversity. *Nature*, 405, 220–227. <https://doi.org/10.1038/35012228>
- Geller, J., Meyer, C., Parker, M., & Hawk, H. (2013). Redesign of PCR primers for mitochondrial cytochrome c oxidase subunit I for marine invertebrates and application in all-taxa biotic surveys. *Molecular Ecology Resources*, 13(5), 851–861. <https://doi.org/10.1111/1755-0998.12138>
- Giraudoux, P. (2018). pgrimm: Spatial analysis and data mining for field ecologists. *R Package Version*, 361(1.6), 9.
- Gotelli, N. J., & Colwell, R. K. (2011). Estimating species richness. *Biological Diversity: Frontiers in Measurement and Assessment*, 12, 39–54.
- Hajibabaei, M., Shokralla, S., Zhou, X., Singer, G. A., & Baird, D. J. (2011). Environmental barcoding: A next-generation sequencing approach for biomonitoring applications using river benthos. *PLoS One*, 6(4), e17497. <https://doi.org/10.1371/journal.pone.0017497>
- Hänfling, B., Lawson Handley, L., Read, D. S., Hahn, C., Li, J., Nichols, P., ... Winfield, I. J. (2016). Environmental DNA metabarcoding of lake fish communities reflects long-term data from established survey methods. *Molecular Ecology*, 25(13), 3101–3119. <https://doi.org/10.1111/mec.13660>
- Harvey, E., & Altermatt, F. (2019). Regulation of the functional structure of aquatic communities across spatial scales in a major river network. *Ecology*, 100(4), e02633. <https://doi.org/10.1002/ecy.2633>
- Harvey, E., Gounand, I., Fronhofer, E. A., & Altermatt, F. (2018). Disturbance reverses classic biodiversity predictions in river-like

- landscapes. *Proceedings of the Royal Society B: Biological Sciences*, 285(1893), 20182441–<https://doi.org/10.1098/rspb.2018.2441>
- Holyoak, M., Leibold, M. A., & Holt, R. D. (2005). *Metacommunities: Spatial dynamics and ecological communities*. Chicago, IL: University of Chicago Press.
- Isbell, F., Gonzalez, A., Loreau, M., Cowles, J., Díaz, S., Hector, A., ... Larigauderie, A. (2017). Linking the influence and dependence of people on biodiversity across scales. *Nature*, 546, 65–72. <https://doi.org/10.1038/nature22899>
- Jerde, C. L., Olds, B. P., Shogren, A. J., Andruszkiewicz, E. A., Mahon, A. R., Bolster, D., & Tank, J. L. (2016). Influence of stream bottom substrate on retention and transport of vertebrate environmental DNA. *Environmental Science & Technology*, 50(16), 8770–8779. <https://doi.org/10.1021/acs.est.6b01761>
- Koleff, P., Gaston, K. J., & Lennon, J. J. (2003). Measuring beta diversity for presence-absence data. *Journal of Animal Ecology*, 72(3), 367–382. <https://doi.org/10.1046/j.1365-2656.2003.00710.x>
- Laforest, B. J., Winegardner, A. K., Zaheer, O. A., Jeffery, N. W., Boyle, E. E., & Adamowicz, S. J. (2013). Insights into biodiversity sampling strategies for freshwater microinvertebrate faunas through bioblitz campaigns and DNA barcoding. *BMC Ecology*, 13(1), 13. <https://doi.org/10.1186/1472-6785-13-13>
- Lawson Handley, L. (2015). How will the 'molecular revolution' contribute to biological recording? *Biological Journal of the Linnean Society*, 115(3), 750–766. <https://doi.org/10.1111/bij.12516>
- Leray, M., & Knowlton, N. (2017). Random sampling causes the low reproducibility of rare eukaryotic OTUs in Illumina COI metabarcoding. *PeerJ*, 5, e3006. <https://doi.org/10.7717/peerj.3006>
- Leray, M., Yang, J. Y., Meyer, C. P., Mills, S. C., Agudelo, N., Ranwez, V., ... Machida, R. J. (2013). A new versatile primer set targeting a short fragment of the mitochondrial COI region for metabarcoding metazoan diversity: Application for characterizing coral reef fish gut contents. *Frontiers in Zoology*, 10(1), 34. <https://doi.org/10.1186/1742-9994-10-34>
- Li, Y., Evans, N. T., Renshaw, M. A., Jerde, C. L., Olds, B. P., Shogren, A. J., ... Pfrender, M. E. (2018). Estimating fish alpha-and beta-diversity along a small stream with environmental DNA metabarcoding. *Metabarcoding and Metagenomics*, 2, e24262. <https://doi.org/10.3897/mbmg.2.24262>
- Lundmark, C. (2003). BioBlitz: Getting into backyard biodiversity. *BioScience*, 53(4), 329. [https://doi.org/10.1641/0006-3568\(2003\)053\[0329:BGIBB\]2.0.CO;2](https://doi.org/10.1641/0006-3568(2003)053[0329:BGIBB]2.0.CO;2)
- Macher, J.-N., & Leese, F. (2017). Environmental DNA metabarcoding of rivers: Not all eDNA is everywhere, and not all the time. *BioRxiv*. <https://doi.org/10.1101/164046>
- Machida, R. J., Leray, M., Ho, S.-L., & Knowlton, N. (2017). Metazoan mitochondrial gene sequence reference datasets for taxonomic assignment of environmental samples. *Scientific Data*, 4, 170027. <https://doi.org/10.1038/sdata.2017.27>
- Mächler, E., Osathanukul, M., & Altermatt, F. (2018). Shedding light on eDNA: Neither natural levels of UV radiation nor the presence of a filter feeder affect eDNA-based detection of aquatic organisms. *PLoS One*, 13(4), e0195529. <https://doi.org/10.1371/journal.pone.0195529>
- McMurdie, P. J., & Holmes, S. (2013). phyloseq: An R package for reproducible interactive analysis and graphics of microbiome census data. *PLoS One*, 8(4), e61217. <https://doi.org/10.1371/journal.pone.0061217>
- Oksanen, J., Blanchet, F. G., Kindt, R., Legendre, P., Minchin, P. R., O'hara, R. B., ... Wagner, H. (2011). *vegan: Community ecology package*. R Package Version, 117–118.
- Olds, B. P., Jerde, C. L., Renshaw, M. A., Li, Y., Evans, N. T., Turner, C. R., ... Lamberti, G. A. (2016). Estimating species richness using environmental DNA. *Ecology and Evolution*, 6(12), 4214–4226. <https://doi.org/10.1002/ece3.2186>
- Pennekamp, F., Pontarp, M., Tabi, A., Altermatt, F., Alther, R., Choffat, Y., ... Petchey, O. L. (2018). Biodiversity increases and decreases ecosystem stability. *Nature*, 563(7729), 109–112. <https://doi.org/10.1038/s41586-018-0627-8>
- Pfaundler, M., & Schoenenberger, U. (2013). *Datensatz MQ-GWN-CH, modellierte mittlere natürliche Abflüsse für das Gewässernetz der Schweiz*. CH-3003 Bern, Switzerland: Bundesamt für Umwelt (BAFU).
- Pont, D., Rocle, M., Valentini, A., Civade, R., Jean, P., Maire, A., ... Dejean, T. (2018). Environmental DNA reveals quantitative patterns of fish biodiversity in large rivers despite its downstream transportation. *Scientific Reports*, 8(1), 10361. <https://doi.org/10.1038/s41598-018-28424-8>
- Postel, S., & Carpenter, S. (1997). *Freshwater ecosystem services*. Nature's Services: Societal Dependence on Natural Ecosystems, 195.
- Purvis, A., & Hector, A. (2000). Getting the measure of biodiversity. *Nature*, 405, 212. <https://doi.org/10.1038/35012221>
- R Development Core Team (2008). *R: A language and environment for statistical computing*. Vienna, Austria: R foundation for statistical computing.
- Resh, V. H., & Rosenberg, D. M. (1993). *Freshwater biomonitoring and benthic macroinvertebrates*.
- Reynoldson, T. B., Logan, C., Pascoe, T., & Thompson, S. P. (2003). *CABIN (Canadian Aquatic Biomonitoring Network) invertebrate biomonitoring field and laboratory manual*. Environment Canada, National Water Research Institute.
- Sassoubre, L. M., Yamahara, K. M., Gardner, L. D., Block, B. A., & Boehm, A. B. (2016). Quantification of environmental DNA (eDNA) shedding and decay rates for three marine fish. *Environ Sci Technol*, 50(19), 10456–10464. <https://doi.org/10.1021/acs.est.6b03114>
- Schmidt-Kloiber, A., & Hering, D. (2015). www.freshwaterecology.info—An online tool that unifies, standardises and codifies more than 20,000 European freshwater organisms and their ecological preferences. *Ecological Indicators*, 53, 271–282. <https://doi.org/10.1016/j.ecolind.2015.02.007>
- Seymour, M., Fronhofer, E. A., & Altermatt, F. (2015). Dendritic network structure and dispersal affect temporal dynamics of diversity and species persistence. *Oikos*, 124(7), 908–916. <https://doi.org/10.1111/oik.02354>
- Shogren, A. J., Tank, J. L., Andruszkiewicz, E. A., Olds, B., Jerde, C., & Bolster, D. (2016). Modelling the transport of environmental DNA through a porous substrate using continuous flow-through column experiments. *Journal of the Royal Society Interface*, 13(119), <https://doi.org/10.1098/rsif.2016.0290>
- Shogren, A. J., Tank, J. L., Andruszkiewicz, E., Olds, B., Mahon, A. R., Jerde, C. L., & Bolster, D. (2017). Controls on eDNA movement in streams: Transport, retention, and resuspension. *Scientific Reports*, 7(1), 5065. <https://doi.org/10.1038/s41598-017-05223-1>
- Shokralla, S., Spall, J. L., Gibson, J. F., & Hajibabaei, M. (2012). Next-generation sequencing technologies for environmental DNA research. *Molecular Ecology*, 21(8), 1794–1805. <https://doi.org/10.1111/j.1365-294X.2012.05538.x>
- Tonkin, J. D., Altermatt, F., Finn, D. S., Heino, J., Olden, J. D., Pauls, S. U., & Lytle, D. A. (2018). The role of dispersal in river network metacommunities: Patterns, processes, and pathways. *Freshwater Biology*, 63(1), 141–163.
- Valentini, A., Taberlet, P., Miaud, C., Civade, R., Herder, J., Thomsen, P. F., ... Dejean, T. (2016). Next-generation monitoring of aquatic biodiversity using environmental DNA metabarcoding. *Molecular Ecology*, 25(4), 929–942. <https://doi.org/10.1111/mec.13428>
- Whittaker, R. H. (1972). Evolution and measurement of species diversity. *Taxon*, 213–251. <https://doi.org/10.2307/1218190>

- Wilkinson, L., & Urbanek, S. (2011). *venneuler: Venn and Euler diagrams*. R Package Version, 1(1).
- Winter, D. J. (2017). *rentrez*: An R package for the NCBI eUtils API. *The R Journal*, 9(2), 520. <https://doi.org/10.32614/RJ-2017-058>

How to cite this article: Mächler E, Little CJ, Wüthrich R, et al. Assessing different components of diversity across a river network using eDNA. *Environmental DNA*. 2019;00:1-12. <https://doi.org/10.1002/edn3.33>

SUPPORTING INFORMATION

Additional supporting information may be found online in the Supporting Information section at the end of the article.