



**HAL**  
open science

# Ecosystem-based reference points under varying plankton productivity states and fisheries management strategies

Chuanbo Guo, Caihong Fu, Robyn E Forrest, Norm Olsen, Huizhu Liu,  
Philippe Verley, Yunne-Jai Shin

► **To cite this version:**

Chuanbo Guo, Caihong Fu, Robyn E Forrest, Norm Olsen, Huizhu Liu, et al.. Ecosystem-based reference points under varying plankton productivity states and fisheries management strategies. *ICES Journal of Marine Science*, 2019, 76 (7), pp.2045-2059. 10.1093/icesjms/fsz120 . hal-02284160

**HAL Id: hal-02284160**

<https://hal.umontpellier.fr/hal-02284160v1>

Submitted on 11 Sep 2019

**HAL** is a multi-disciplinary open access archive for the deposit and dissemination of scientific research documents, whether they are published or not. The documents may come from teaching and research institutions in France or abroad, or from public or private research centers.

L'archive ouverte pluridisciplinaire **HAL**, est destinée au dépôt et à la diffusion de documents scientifiques de niveau recherche, publiés ou non, émanant des établissements d'enseignement et de recherche français ou étrangers, des laboratoires publics ou privés.

## Ecosystem-based reference points under varying plankton productivity states and fisheries management strategies

Chuanbo Guo <sup>1\*</sup>, Caihong Fu <sup>1</sup>, Robyn E. Forrest<sup>1</sup>, Norm Olsen<sup>1</sup>, Huizhu Liu<sup>2</sup>, Philippe Verley<sup>3</sup>, and Yunne-Jai Shin<sup>4,5</sup>

<sup>1</sup>Fisheries and Oceans Canada, Pacific Biological Station, Nanaimo, BC V9T 6N7, Canada

<sup>2</sup>Vancouver Island University, Nanaimo, Canada

<sup>3</sup>Institut de Recherche pour le Développement, UMR AMAP (IRD, Cirad, INRA, CNRS, Université de Montpellier), Montpellier, France

<sup>4</sup>Institut de Recherche pour le Développement, Sète, France

<sup>5</sup>Université de Montpellier, 34095 Montpellier Cedex 5, France

\*Corresponding author: tel: + 1 250 7298373; fax: + 1 250 7567053; e-mail: [chuanbo.guo@dfo-mpo.gc.ca](mailto:chuanbo.guo@dfo-mpo.gc.ca), [guochuanbo@gmail.com](mailto:guochuanbo@gmail.com).

Guo, C., Fu, C., Forrest, R. E., Olsen, N., Liu, H., Verley, P., and Shin, Y.-J. Ecosystem-based reference points under varying plankton productivity states and fisheries management strategies. – ICES Journal of Marine Science, doi:10.1093/icesjms/fsz120.

Received 12 March 2019; revised 31 May 2019; accepted 4 June 2019.

In the context of ecosystem-based fisheries management, which should consider changing and uncertain environmental conditions, the development of ecosystem-based biological reference points (EBRPs) to account for important multi-species (MS) interactions, fishery operations, and climate change, is of paramount importance for sustainable fisheries management. However, EBRPs under varying plankton productivity states and fisheries management strategies are seldom developed, and the ecosystem effects of these changes are still largely unknown. In this study, ecosystem-based  $F_{MSY}$  (fishing mortality rate at MSY) values were estimated within an end-to-end ecosystem model (OSMOSE) for three focused fish species (Pacific Herring, *Clupea pallasii*; Pacific Cod, *Gadus macrocephalus*; Lingcod, *Ophiodon elongatus*) under three plankton productivity states of differing plankton biomass at high, current, and low levels. In addition, ecosystem effects were compared across different plankton productivity and fisheries management strategies with the latter consisting of two fishery scenarios (i.e. single-species-focused (SS) and MS-focused), various fishing mortality rates, and two harvest policies (with and without harvest control rules, HCRs). Main findings of this study include: (i) plankton productivity change affected the values of ecosystem-based  $F_{MSY}$ , which increased as plankton productivity states changed from low to high plankton biomass; (ii) ecosystem-based  $F_{MSY}$  for Pacific Herring and Pacific Cod stocks increased when fishery scenarios shifted from SS-focused to MS-focused; (iii) fisheries management incorporating HCR yielded more stable system catch and system biomass; and (iv) high plankton biomass combined with fisheries management using HCR could maintain stable ecosystem production and sustainable fisheries. Based on our findings, we highlight possible adaptive fisheries management strategies in the face of future climate and ocean changes. Overall, EBRPs complement SS stock assessments by incorporating key ecological processes and ecosystem properties, thus providing supporting evidence for better incorporation of ecosystem considerations into scientific advice for sustainable fisheries management.

**Keywords:** ecosystem-based fisheries management, ecosystem-based reference point, ecosystem model, harvest control rules, OSMOSE

### Introduction

Biological reference points (BRPs) are a set of assigned or estimated objectives for a fish stock that represent biomass targets to achieve or thresholds for avoidance (Sainsbury, 2008; Punt *et al.*,

2016). BRPs are generally used as benchmarks for indicating stock status and for identifying desirable levels of fishing mortality for achieving objectives. The most commonly used BRPs are based on the concept of MSY, i.e. the biomass or fishing mortality rate

© International Council for the Exploration of the Sea 2019.

This is an Open Access article distributed under the terms of the Creative Commons Attribution License (<http://creativecommons.org/licenses/by/4.0/>), which permits unrestricted reuse, distribution, and reproduction in any medium, provided the original work is properly cited.

at MSY (i.e.  $B_{MSY}$ ,  $F_{MSY}$ ) (Gabriel and Mace, 1999; Mace, 2001; Punt and Smith, 2001; Tyrrell *et al.*, 2011). Over the last several decades, BRPs have been employed worldwide to support decisions for fisheries management (Braccini *et al.*, 2015; Holsman *et al.*, 2016). However, routinely used BRPs are mostly derived from SS equilibrium models, and do not account for ecosystem-level ecological processes (e.g. species interactions, ecosystem productivity, or other environmental changes such as those arising from climate change). Failure to account for such uncertainties may reduce the effectiveness of applied BRPs (Gislason, 1999; Collie and Gislason, 2001; Holsman *et al.*, 2016). Consequently, fisheries management decisions based on BRPs may become either more or less precautionary than originally intended (Heino *et al.*, 2013). Therefore, the development and testing of ecosystem-based biological reference points (EBRPs) to account for important MS interactions (Smith *et al.*, 2015; Dolan *et al.*, 2016; Holsman *et al.*, 2016), fishery operations (Forrest and Walters 2009; Forrest *et al.*, 2015b), and climatic changes (Tyrrell *et al.*, 2011; Moffitt *et al.*, 2016; Payne *et al.*, 2017) at the ecosystem level, is of paramount importance for moving towards sustainable ecosystem-based fisheries management (EBFM; Hall and Mainprize, 2004; Link, 2010) in the context of uncertain future changes. Development and testing of EBRPs is an important step in the move towards EBFM.

Despite increasing importance and awareness of the need for EBRPs, details on how EBRPs should be developed and assessed, how they differ under future scenarios of climate change and varying human activities (e.g. shifts in fishing strategies and harvest policies), and how ecosystems will be impacted by their applications are still not well-studied (Hall and Mainprize, 2004; Brunel *et al.*, 2010; Link, 2010; Smith *et al.*, 2015; Moffitt *et al.*, 2016). However, there is increasing evidence that climate and ocean changes could have considerable impacts on marine ecosystems and fisheries sustainability (Brunel *et al.*, 2010; Little *et al.*, 2011; Sumaila *et al.*, 2011; Heino *et al.*, 2013; Smith *et al.*, 2015).

Development and simulation-testing of EBRPs requires comprehensive and robust ecosystem modelling platforms (Plagányi, 2007; Fulton, 2010; Travers-Trolet *et al.*, 2014). Ecosystem models can serve as excellent platforms for generating and evaluating EBRPs and quantifying the trade-offs between different management strategies in the face of climate change (Brown *et al.*, 2010). Examples of such ecosystem models include Ecopath with Ecosim (Christensen and Walters, 2004), Atlantis (Fulton *et al.*, 2005), and OSMOSE (Shin and Cury, 2004). Specifically, OSMOSE is an individual-based, spatially and temporally explicit modelling platform, able to account for size-based predator-prey interactions, whole life cycle dynamics of marine organisms, impacts of environmental changes on growth and survival of marine organisms, as well as the effects of harvest strategies and marine protected areas (Shin and Cury, 2004; Yemane *et al.*, 2008; Travers-Trolet *et al.*, 2014; Fu *et al.*, 2017; Payne *et al.*, 2017).

In the Northeast Pacific, climate and ocean changes has produced shifts in physical and chemical properties of the ocean, such as increased sea surface temperature, dissolved CO<sub>2</sub> and decreased dissolved oxygen (Foreman *et al.*, 2014; Morrison *et al.*, 2014), as well as altered lower-trophic-level (LTL) communities, resulting in alterations of food nutritional quality for juvenile fish (reviewed in Cummins *et al.*, 2010). Plankton productivity, on which most marine animals depend directly or indirectly, as a source of energy, can be a useful indicator of potential changes in

marine environments due to climate and ocean changes (Horwood *et al.*, 2000; Hays *et al.*, 2005).

In the face of such climate and ocean changes, we propose to develop EBRPs for exploited fish species and explore the ecosystem effects of fisheries exploitation under various scenarios of plankton productivity states (changes in plankton biomass) and fisheries management strategies with the latter consisting of two fishery scenarios (SS-focused and MS-focused), various fishing mortality rates, and two harvest policies (with and without harvest control rules, HCRs). We used an existing ecosystem model (OSMOSE-PNCIMA) for the Pacific North Coast Integrated Management Area (PNCIMA) off western Canada (Fu *et al.*, 2017) to mimic the complex changes of climate and fisheries management strategies. The primary objectives of this study were to (i) derive ecosystem-level  $F_{MSY}$  values for three exploited species [Pacific Herring (*Clupea pallasii*), Pacific Cod (*Gadus macrocephalus*), and Lingcod (*Ophiodon elongatus*)] under alternative scenarios of plankton productivity state and fisheries management strategy; (ii) explore the effects of different plankton productivity states and fishery management strategies on ecosystem-based  $F_{MSY}$ ; and (iii) investigate ecosystem effects of interactions between plankton productivity states and fishery management strategies. The development of ecosystem-based BRPs in our study could be used to complement SS stock assessments by identifying key ecosystem dynamics that impact multiple species and fisheries over the long term, thus contributing to the need for incorporation of ecosystem considerations into scientific advice for sustainable fisheries management. Moreover, this study aims to guide the adaptation of fisheries management strategies in the face of climate and ocean changes.

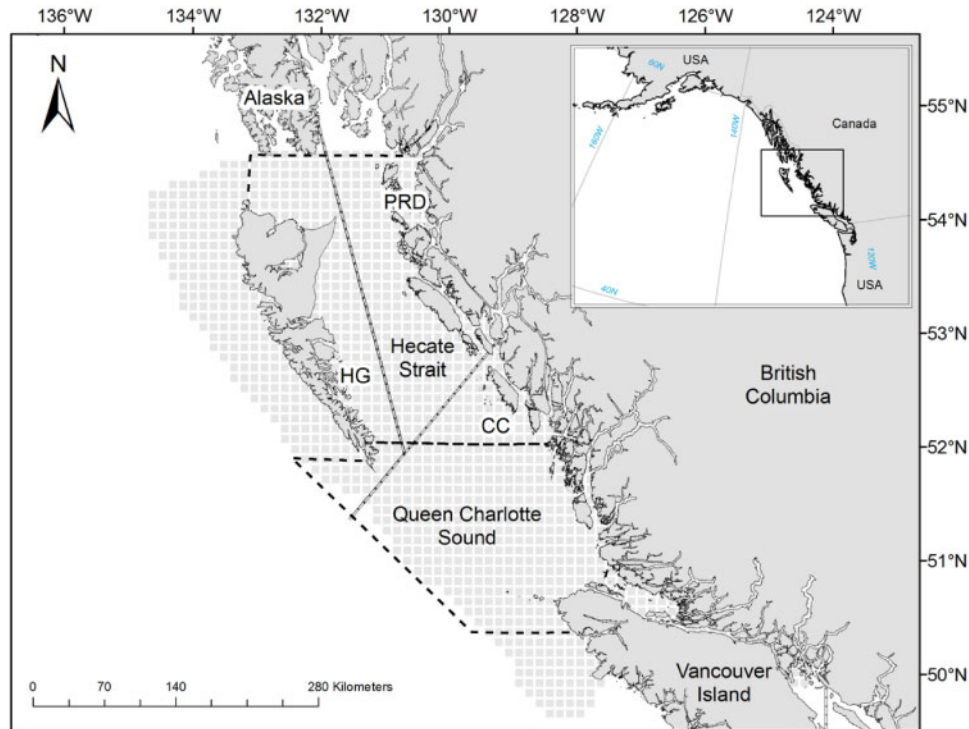
## Material and methods

### Study area

The PNCIMA off western Canada encompasses around 88 000 km<sup>2</sup>, extending from the coastal watersheds to the outer limit of the continental slope. It is bounded to the north by the Canada-Alaska border and to the south by Brooks Peninsula on northwest Vancouver Island and Quadra Island to the east of Vancouver Island (Lucas *et al.*, 2007). The PNCIMA ecosystem supports hundreds of species, a few dozen of which are commercially exploited (Lucas *et al.*, 2007; Fu *et al.*, 2017). The spatial grid of the OSMOSE model developed in this study covers the whole PNCIMA region, divided into grid cells of 10 × 10 km<sup>2</sup> (Figure 1).

### OSMOSE-PNCIMA model

The OSMOSE-PNCIMA model was originally developed by Fu *et al.* (2017), focusing on 6 key species, 19 “background” taxa, and 2 LTL groups (Supplementary Table S1). The key species are Pacific Herring, Pacific Cod, Lingcod, Arrowtooth Flounder (*Atheresthes stomias*), Walleye Pollock (*Theragra chalcogramma*), and Euphausiids (*Thysanoessa* spp. and *Euphausia* spp.). These key species are generally viewed as resident species among which strong predator-prey interactions occur (Fu *et al.*, 2017). The inclusion of “background” taxa in OSMOSE-PNCIMA is to explicitly consider the species and taxa that are of secondary importance for this study but have potentially important trophic interactions with the modelled key species (see Supplementary Table S1 for details of represented species in each background



**Figure 1.** Map of the PNCIMA showing the spatial grid of the OSMOSE-PNCIMA model (light grey cells), the three management areas (PRD, HG, and CC) of Pacific Herring (delineated by double dashed lines), and the two management areas (separated by dashed lines) of Cod and Lingcod (Hecate Strait and Queen Charlotte Sound).

taxon). LTL groups (i.e. phytoplankton, and copepods) in OSMOSE-PNCIMA only serve as food and are represented as spatially distributed biomass pools (Supplementary Table S1; Fu *et al.*, 2017).

Within the OSMOSE-PNCIMA model, Pacific Herring is assumed to have three separate populations in three distinct areas: the Prince Rupert District (PRD), the Haida Gwaii (HG), and the Central Coast (CC) based on genetic and tagging studies (Beacham *et al.*, 2008; Flostrand *et al.*, 2009). Pacific Cod and Lingcod have both been treated in stock assessments as having two different populations in two distinct areas: Hecate Strait (HS) and Queen Charlotte Sound (QCS) (King *et al.*, 2012; Forrest *et al.*, 2015a; Figure 1), albeit these distinctions are not based on genetic and tagging studies and simply use management areas as a proxy for stock structure. Therefore, a total of ten focus stocks were considered in OSMOSE-PNCIMA, i.e. Herring-PRD, Herring-HG, Herring-CC, Cod-HS, Cod-QCS, Lingcod-HS, Lingcod-QCS, Walleye Pollock, Arrowtooth Flounder, and Euphausiids. OSMOSE-PNCIMA simulated the life cycles of the ten focus stocks, from the egg stage to the terminal age, with a time-step of 3 months. At the first time-step after the production of eggs, the total number of eggs of each population was split into 120 super individuals called “schools,” which were distributed spatially according to input distribution maps. The distribution maps ( $10 \times 10 \text{ km}^2$ ) were density-based and obtained from georeferenced data of both commercial fisheries and research surveys (data archives are maintained by Fisheries and Oceans Canada, Pacific Biological Station, Nanaimo, British Columbia). At each time-step, OSMOSE simulated the biological and ecological processes of these schools, including growth, predation, starvation,

other natural mortality (due to causes unaccounted for by the model), fishing, reproduction, and spatial movement (including migration). However for the background taxa, only the predation, spatial distribution, and movement processes are simulated. Predation in OSMOSE was considered as an opportunistic process, occurring under the conditions of size suitability (with a minimum and a maximum predator to prey size ratio) and spatiotemporal co-occurrence between a predator and its prey (Fu *et al.*, 2013, 2017). Biomass estimates of Herring and Cod from the most recently available stock assessments (Forrest *et al.*, 2015a; DFO, 2019) were used to validate the OSMOSE-PNCIMA ecosystem model because these two species have the most complete and reliable stock assessment results, and the model generated good fits to the assessed biomass time series for Herring and Cod. For detailed information on biological parameters, spatial distributions, and fishing as well as model construction and validation procedures, readers are referred to Fu *et al.* (2017).

### Simulation scenarios

Changes in plankton biomass is often considered as a comprehensive indicator that accounts for climate and ocean changes in physical and biological functioning of marine ecosystems (Travers *et al.*, 2007; Barange *et al.*, 2014; Fu *et al.*, 2018). Therefore, we used the change in plankton biomass (i.e. the sum of both phytoplankton and copepod biomass in the OSMOSE-PNCIMA model) as a proxy for plankton productivity change. Three plankton productivity states were thus hypothesized as current, high, and low plankton biomass scenarios. The assumed current plankton biomass scenario, denoted as Curr, was based

on the plankton biomass in the existing OSMOSE-PNCIMA model (Fu *et al.*, 2017). The high plankton biomass (denoted as Doub) and low plankton biomass (denoted as Half) scenarios represented doubling and halving of the plankton biomass from the current level in the last 30 years, respectively. Due to the fisheries interaction effects (i.e. fishing one species may indirectly affect other species), which may affect the estimation of BRPs (Smith *et al.*, 2015), this study explored two different fishery scenarios, single-species-focused (SS) and multi-species-focused (MS), as suggested by Smith *et al.* (2015). Nevertheless, BRPs estimated in both SS and MS scenarios were ecosystem-based BRPs which account for ecosystem processes. In the SS scenario, only one target species was subjected to fishing mortality experiments (i.e. a total of 33 fishing mortality rates changing from 0 to 2 year<sup>-1</sup> were employed for each simulation run, fishing mortality rates were listed in Supplementary Table S2) while all other species were fished at the baseline fishing mortality rates. In the MS scenario, all the exploited key species undergo the same set of experimental fishing mortality rates from 0 to 2 year<sup>-1</sup>.

Two harvest policies were applied to the focus stocks: HCR, denoting a policy with an applied HCR (details below), and NHCR, where no HCR was applied. For the HCR scenario, the fishing mortality rate of a specific species was subjected to a HCR based on the status of spawning stock biomass (SSB), following Fu and Schweigert (2004), i.e.

$$F_{i,t} = \begin{cases} 0, & \text{if } SSB_{i,t} < SSB_{low_i} \\ F \frac{SSB_{i,t} - SSB_{low_i}}{SSB_{up_i} - SSB_{low_i}}, & \text{if } SSB_{low_i} \leq SSB_{i,t} \leq SSB_{up_i} \\ F, & \text{if } SSB_{i,t} > SSB_{up_i} \end{cases}, \quad (1)$$

where  $t$  is for year, and  $SSB_{low_i}$  and  $SSB_{up_i}$  are the lower and upper SSB cutoff and target thresholds for species  $i$ . Here, we used the same SSB thresholds for Pacific Herring, Pacific Cod, and Lingcod, i.e.  $SSB_{low} = 0.30 * SSB_0$  and  $SSB_{up} = 0.60 * SSB_0$ . The values of  $SSB_{low}$  and  $SSB_{up}$  used here were introduced for the potential management of Pacific Herring in British Columbia, Canada, and termed as limit reference point (LRP) and operational control points (OCPs), respectively (Kronlund *et al.*, 2018). Here, LRP describes biomass level to be avoided with high probability; OCP specifies the biomass level where management action of reducing fishing mortality rate needs to take place (Kronlund *et al.*, 2018).

In total, 12 scenarios were simulated with the combination of three plankton productivity states (Doub, Curr, and Half), two fishery scenarios (SS and MS), and two harvest policies (HCR and NHCR) (see Supplementary Table S2).

Under each SS scenario, simulation runs were carried out using 1 of the 33 experimental fishing mortality rates ranging from 0 to 2 year<sup>-1</sup> for the focus stocks (fish mortality levels were listed in Supplementary Table S2), while holding fishing mortality at the current levels for all other exploited species. Under the HCR scenario, the experimental fishing mortality was further subjected to the HCR according to the relative SSB [Equation (1)]. The experimental fishing mortality rates were applied to the focus stocks for the last 30 years of the simulation runs, after a 44-year burn-in period, following Fu *et al.* (2017). The outputs of the last 10 years were summarized to calculate  $F_{MSY}$  for all the focus stocks

and to analyse the ecosystem effects (see following section). For each focus stock under the NHCR scenario, all the long-term catch values were plotted against experimental fishing mortality rates, and Locally Weighted Scatterplot Smoothing (Cleveland and Devlin, 1988) was fitted to the data points. Based on the constructed catch curves for each exploited stock (i.e. long-term fisheries catches as a function of fixed fishing mortality rates),  $F_{MSY}$  was defined as the fishing mortality rate that achieved maximum yield (MSY) for the stock. This procedure of estimating  $F_{MSY}$  is relatively standard and has been routinely employed in the field of ecosystem modelling (Smith *et al.*, 2015; Grüss *et al.*, 2016; Moffitt *et al.*, 2016).

### Indicators for assessing ecosystem effects

To investigate ecosystem dynamics under different scenarios, system catch ( $Y$ , represented by the sum of catches of all exploited species) and system biomass ( $B$ , represented by the sum of biomass for the same exploited species) were calculated and used as system-level indicators. In addition to the system catch and system biomass, the variability of these quantities can also function as indicators for ecosystem status and fisheries performance (Carpenter and Brock, 2006; Shin *et al.*, 2010; Fu *et al.*, 2013). The variability of  $B$  can be captured by its coefficient of variation (CV), denoted as  $CVB$ . This indicator reflects overall ecosystem stability (Shin *et al.*, 2010) with a high  $CVB$  indicating a low ecosystem stability and low resistance to perturbations (Shin *et al.*, 2010). The CV of system catch ( $CVY$ ) was employed as an indicator of fisheries performance as achieving low inter-annual variability in fishery production is a desirable objective in fisheries management (Punt and Ralston, 2007; Punt, 2011). To improve comparability, both  $CVB$  and  $CVY$  were double square root transformed (Clarke and Warwick, 2001) and plotted against fishing mortality.

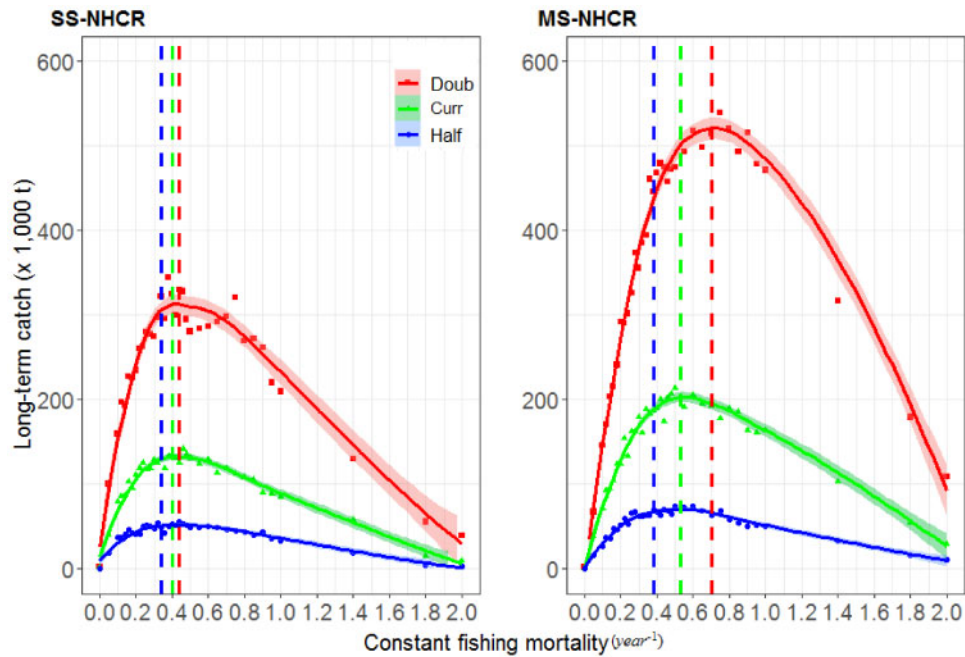
## Results

### Estimation and comparison of ecosystem-based $F_{MSY}$ and MSY under various scenarios

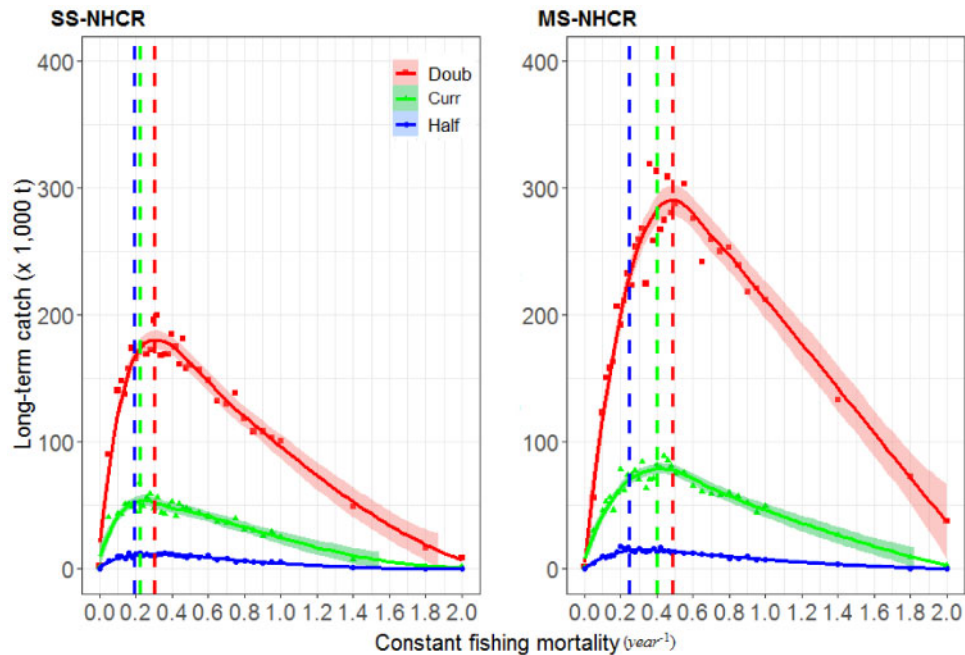
Catch curves based on fisheries management without HCR (i.e. NHCR) yielded incrementally higher  $F_{MSY}$  and MSY values for all seven focus stocks (i.e. Herring-PRD, Herring-HG, Herring-CC, Pacific Cod-QCS, Pacific Cod-HS, Lingcod-QCS, and Lingcod-HS) when plankton productivity shifted from low, current, to high scenario, respectively (Figures 2–8).

Under NHCR, it is worth noting that ecosystem-based  $F_{MSY}$  values increased dramatically for all three herring stocks (i.e. Herring-PRD, Herring-HG, and Herring-CC) when fishery scenarios moved from SS-focused to MS-focused (Figures 2–4). Specifically, for Herring-PRD, the ecosystem-based  $F_{MSY}$  values of 0.31, 0.40, and 0.42 in the low, current, and high plankton biomass scenarios, respectively, under the SS scenario (Figure 2, SS-NHCR), and increased to 0.38, 0.52, and 0.70, respectively, in the MS scenario (Figure 2, MS-NHCR). Similarly, for Herring-HG, the ecosystem-based  $F_{MSY}$  values increased from 0.18, 0.21, and 0.30 (Figure 3, SS-NHCR) to 0.24, 0.40, and 0.49 (Figure 3, MS-NHCR), respectively. The ecosystem-based  $F_{MSY}$  values for Herring-CC rose from 0.21, 0.30, and 0.34 (Figure 4, SS-NHCR) to 0.30, 0.39, and 0.55 (Figure 4, MS-NHCR) under low, current, and high plankton productivity scenarios, respectively.

In comparison, differences in ecosystem-based  $F_{MSY}$  values for the Pacific Cod stocks (Pacific Cod-QCS and Pacific



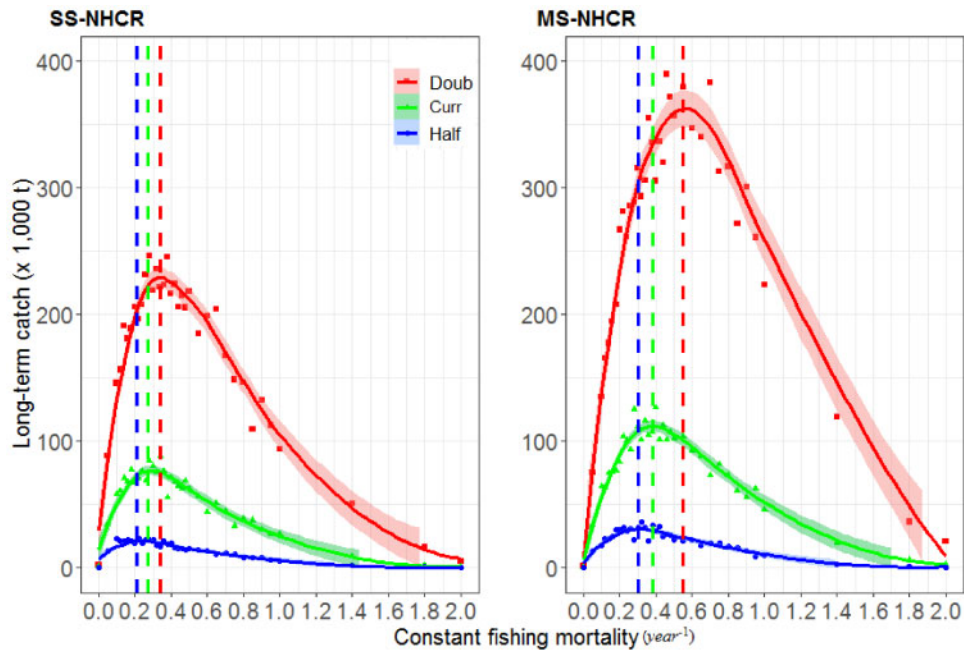
**Figure 2.** Catch curves (with 95% of confidence level intervals) of Herring-PRD for estimating  $F_{MSY}$  in different scenarios with the vertical dashed lines showing the reference points in each of the three plankton productivity states of differing plankton biomass at high (Doub), current (Curr), and low (Half) levels; SS-NHCR, SS-focused fishery without harvest control rules; MS-NHCR, MS-focused fishery without harvest control rules.



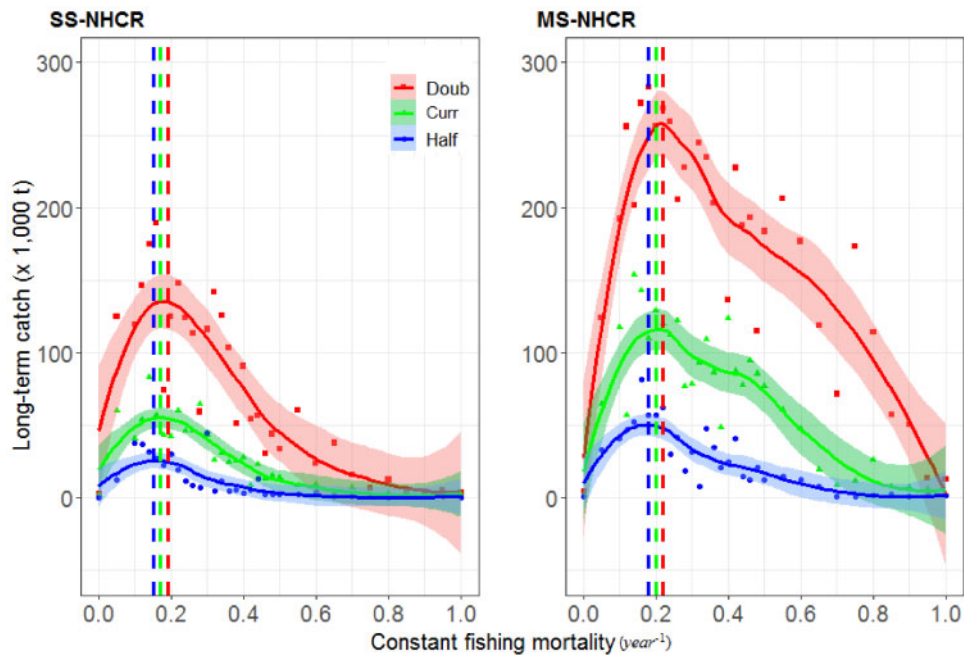
**Figure 3.** Catch curves (with 95% of confidence level intervals) of Herring-HG for estimating  $F_{MSY}$  in different scenarios with the vertical dashed lines showing the reference points in each of the three plankton productivity states of differing plankton biomass at high (Doub), current (Curr), and low (Half) levels; SS-NHCR, SS-focused fishery without harvest control rules; MS-NHCR, MS-focused fishery without harvest control rules.

Cod-HS) between the SS and MS scenarios were only marginal (Figures 5 and 6). Specifically, Pacific Cod-QCS was estimated to have a set of  $F_{MSY}$  values of 0.16, 0.17, and 0.19 in the low, current, and high plankton biomass scenarios under the SS

scenario (Figure 5, SS-NHCR); these values increased to 0.18, 0.20, and 0.21, respectively, under the MS scenario (Figure 5, MS-NHCR). Similarly, the ecosystem-based  $F_{MSY}$  values for the Pacific Cod-HS stock increased slightly from 0.16, 0.17, and



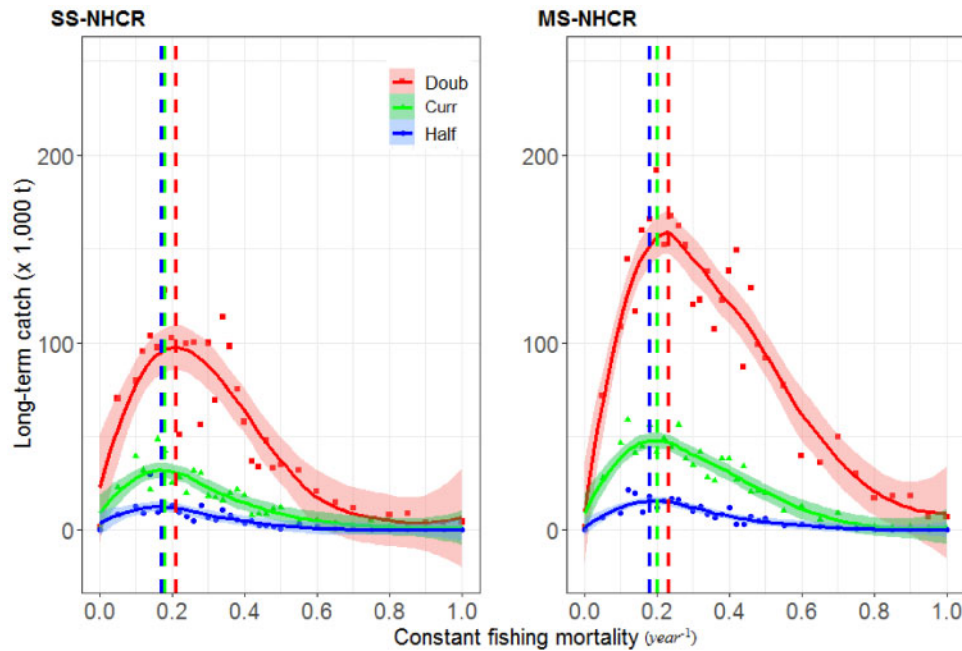
**Figure 4.** Catch curves (with 95% of confidence level intervals) of Herring-CC for estimating  $F_{MSY}$  in different scenarios with the vertical dashed lines showing the reference points in each of the three plankton productivity states of differing plankton biomass at high (Doub), current (Curr), and low (Half) levels; SS-NHCR, SS-focused fishery without harvest control rules; MS-NHCR, MS-focused fishery without harvest control rules.



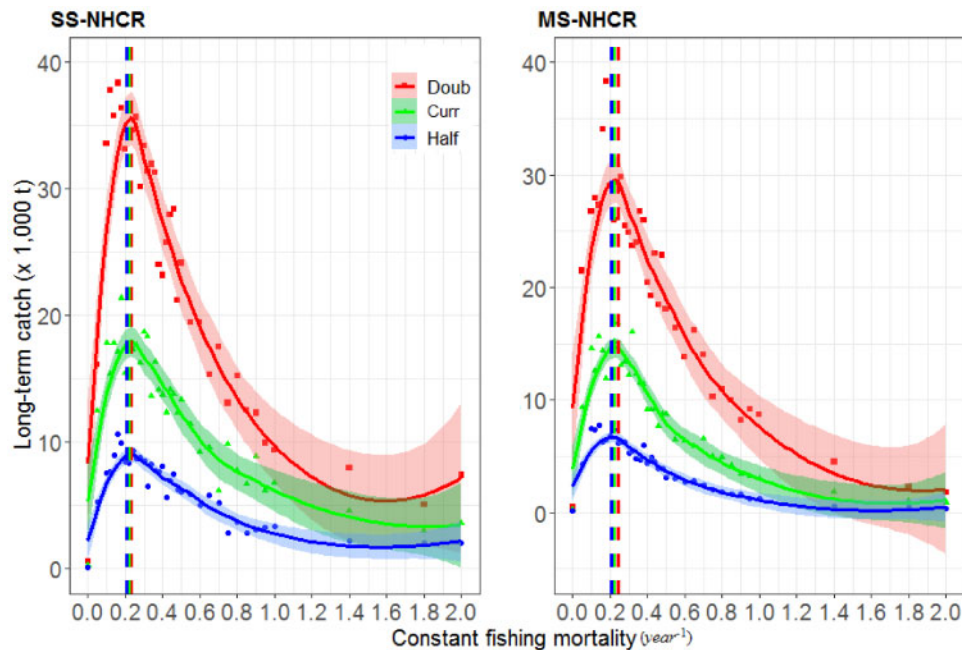
**Figure 5.** Catch curves (with 95% of confidence level intervals) of Pacific Cod-QCS for estimating  $F_{MSY}$  in different scenarios with the vertical dashed lines showing the reference points in each of the three plankton productivity states of differing plankton biomass at high (Doub), current (Curr), and low (Half) levels; SS-NHCR, SS-focused fishery without harvest control rules; MS-NHCR, MS-focused fishery without harvest control rules.

0.21 under the SS scenario (Figure 6, SS-NHCR) to 0.18, 0.20, and 0.22 under the MS scenario (Figure 6, MS-NHCR). Unlike Herring and Cod stocks, Lingcod stocks (Lingcod-QCS and Lingcod-HS) did not have higher ecosystem-based  $F_{MSY}$  values

when the fishery strategy changed from SS to MS (i.e. ecosystem-based values were 0.21, 0.22, 0.23 in the low, current, and high plankton productivity scenarios, respectively) (Figures 7 and 8).



**Figure 6.** Catch curves (with 95% of confidence level intervals) of Pacific Cod-HS for estimating  $F_{MSY}$  in different scenarios with the vertical dashed lines showing the reference points in each of the three plankton productivity states of differing plankton biomass at high (Doub), current (Curr), and low (Half) levels; SS-NHCR, SS-focused fishery without harvest control rules; MS-NHCR, MS-focused fishery without harvest control rules.

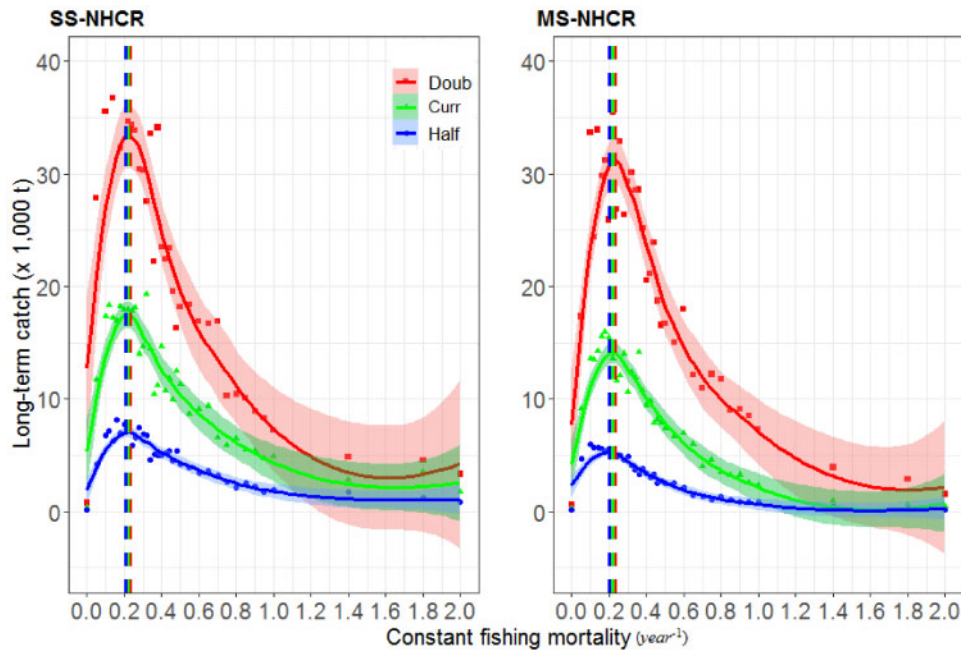


**Figure 7.** Catch curves (with 95% of confidence level intervals) of Lingcod-QCS for estimating  $F_{MSY}$  in different scenarios with the vertical dashed lines showing the reference points in each of the three plankton productivity states of differing plankton biomass at high (Doub), current (Curr), and low (Half) levels; SS-NHCR, SS-focused fishery without harvest control rules; MS-NHCR, MS-focused fishery without harvest control rules.

In terms of ecosystem-based MSY, the values estimated for all Pacific Herring (i.e. Herring-PRD, Herring-HG, and Herring-CC) and Pacific Cod (i.e. Pacific Cod-QCS and Pacific Cod-HS) stocks were relatively lower in SS than those in the

MS scenario (Figures 2–6). However, MSY differences between SS and MS scenarios for two Lingcod stocks were only marginal with relatively higher MSY in the SS scenario (Figures 7 and 8).





**Figure 8.** Catch curves (with 95% of confidence level intervals) of Lingcod-HS for estimating  $F_{MSY}$  in different scenarios with the vertical dashed lines showing the reference points in each of the three plankton productivity states of differing plankton biomass at high (Doub), current (Curr), and low (Half) levels; SS-NHCR, SS-focused fishery without harvest control rules; MS-NHCR, MS-focused fishery without harvest control rules.

### Ecosystem effects of various plankton productivity states and fisheries management strategies

To investigate ecosystem effects under different plankton productivity states and fishing, we only focused on the MS fishery scenario. Comparisons of the ecosystem indicators in the SS fishery scenario were provided in Appendix (Supplementary Figures S1–S6).

As expected, both system catch and system biomass decreased as plankton productivity states changed from high, current, to low plankton biomass regardless of fisheries management with or without HCR (Figures 9 and 10). Specifically, long-term system catch curves under the NHCR scenario were dome-shaped under all plankton productivity states peaking at fishing mortality rates of 0.90, 0.75, and 0.55 in high, current, and low plankton biomass scenarios, respectively (Figure 9a, c, and e). However, under the HCR scenario, long-term system catch increased with the increase in fishing mortality in the high plankton biomass scenario (Figure 9b). However, no obvious trend was seen in the current plankton biomass scenario (Figure 9d). In contrast, long-term system catch generally showed a decreasing trend when fishing mortality was  $>0.1$  in the low plankton biomass scenario (Figure 9e). Although higher long-term system catch was achieved for fishing mortality rates ranging from 0.2 to 1 in the NHCR scenario compared to the HCR scenario, system catch in the HCR scenario was more consistent even under high fishing mortality  $>1.0$  (Figure 9).

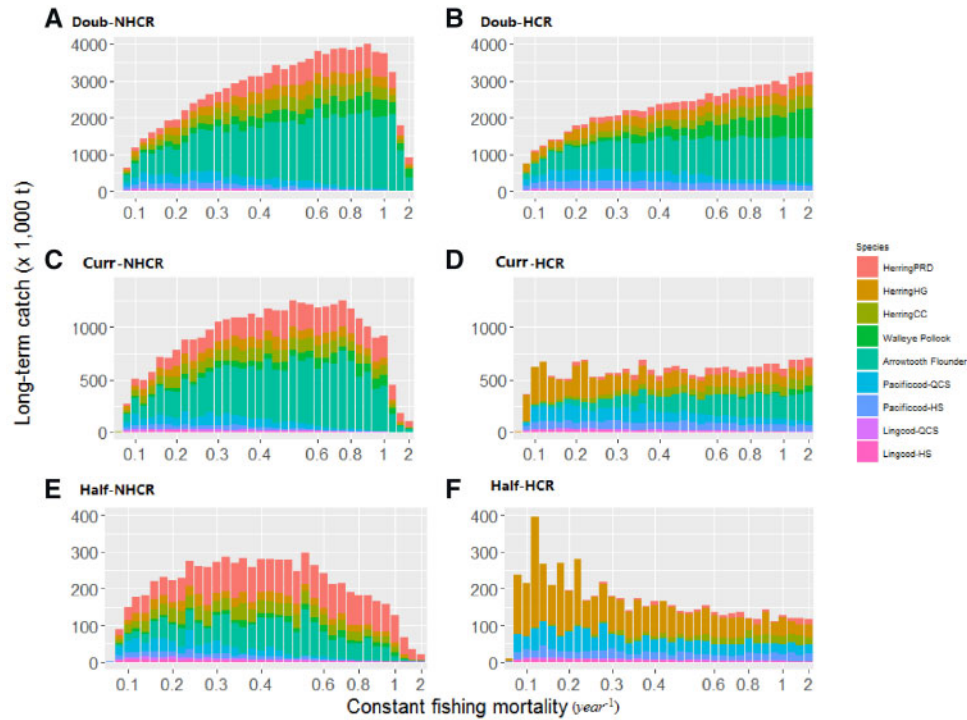
In contrast with system catch, system biomass in the NHCR scenario was always lower than that in the HCR scenario (Figure 10). System biomass in the NHCR scenario decreased with increasing fishing mortality under all three plankton productivity states (Figure 10a, c, and e). However, under the HCR

scenario, system biomass remained stable even under high fishing mortality (Figure 10b, d, and f).

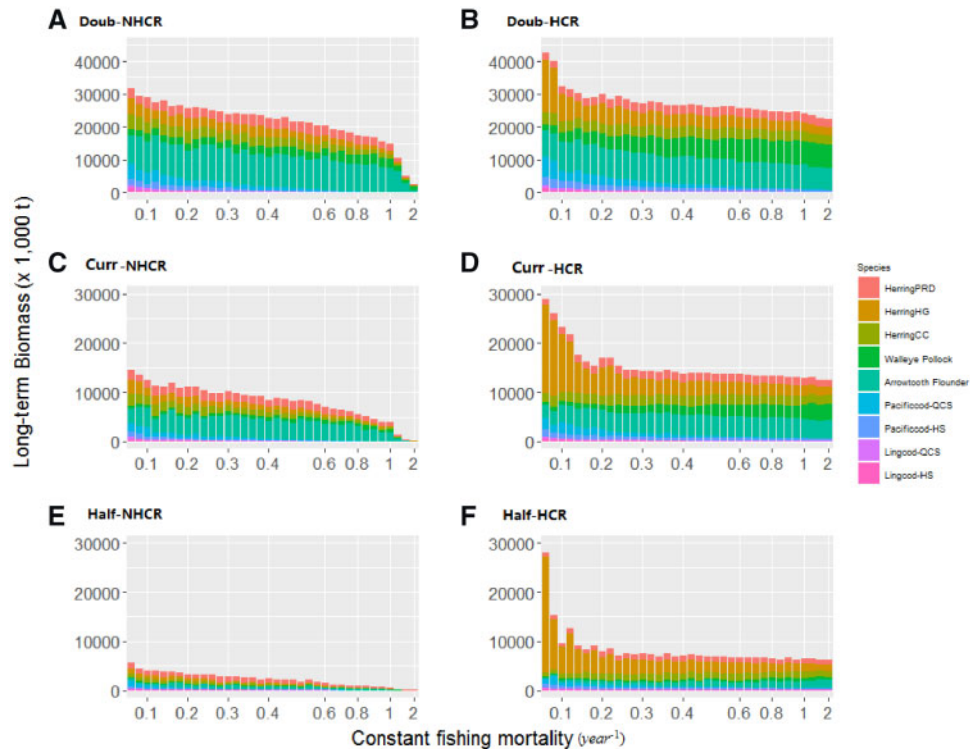
Both CVB and CVY increased as plankton productivity states varied from high, current, to low plankton biomass, regardless of whether HCR was applied (Figures 11 and 12). Under the NHCR scenario, the values of CVB and CVY generally increased with fishing mortality rates and the inter-stock variability (represented by the height of a box plot) of both CVB and CVY also increased with fishing mortality rates particularly under the high plankton biomass (Figure 11 NHCR and Figure 12 NHCR). In contrast, values of CVB and CVY in the HCR scenario were generally more stable along the gradient of fishing mortality. In addition, the inter-stock variability of both CVB and CVY were generally lower in the HCR scenario than under the NHCR scenario particularly under high fishing mortality  $>0.8$  (Figure 11 HCR and Figure 12 HCR).

### Discussion

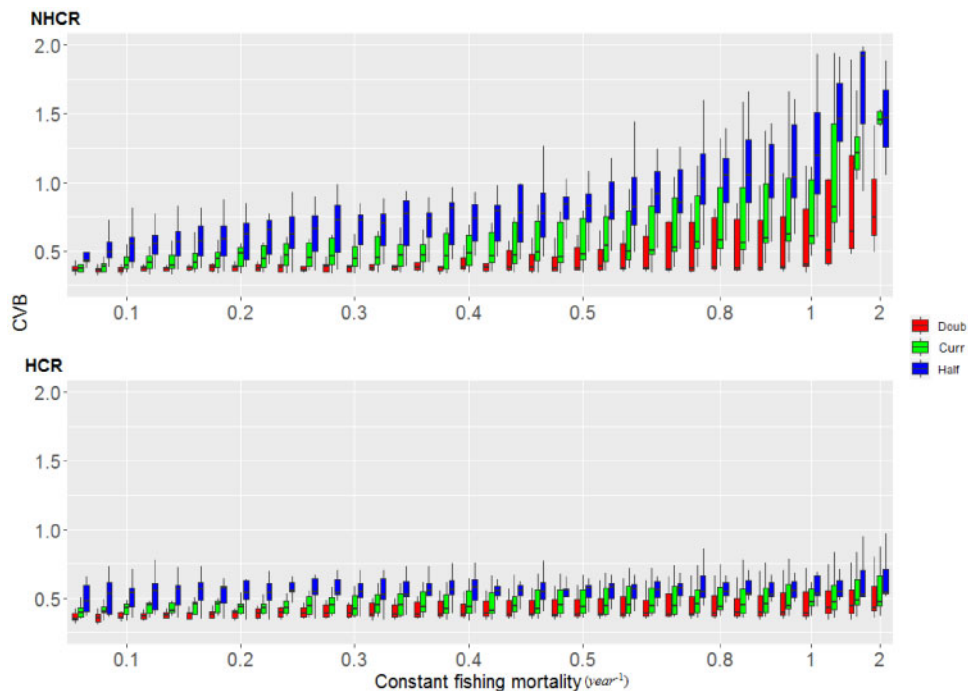
With the end-to-end OSMOSE-PNCIMA model, this study estimated the ecosystem-based  $F_{MSY}$  values for Pacific Herring, Pacific Cod, and Lingcod under three plankton productivity states. Main findings of this study include: (i) plankton productivity change (approximated by changes in plankton biomass) affected the values of ecosystem-based  $F_{MSY}$  and MSY, which increased as plankton productivity states changed from low to high plankton biomass; (ii) ecosystem-based  $F_{MSY}$  and MSY for Pacific Herring and Pacific Cod stocks increased when fishery scenarios shifted from SS to MS; and (iii) fisheries management incorporating HCRs helped maintain stable ecosystem production and sustainable fisheries.



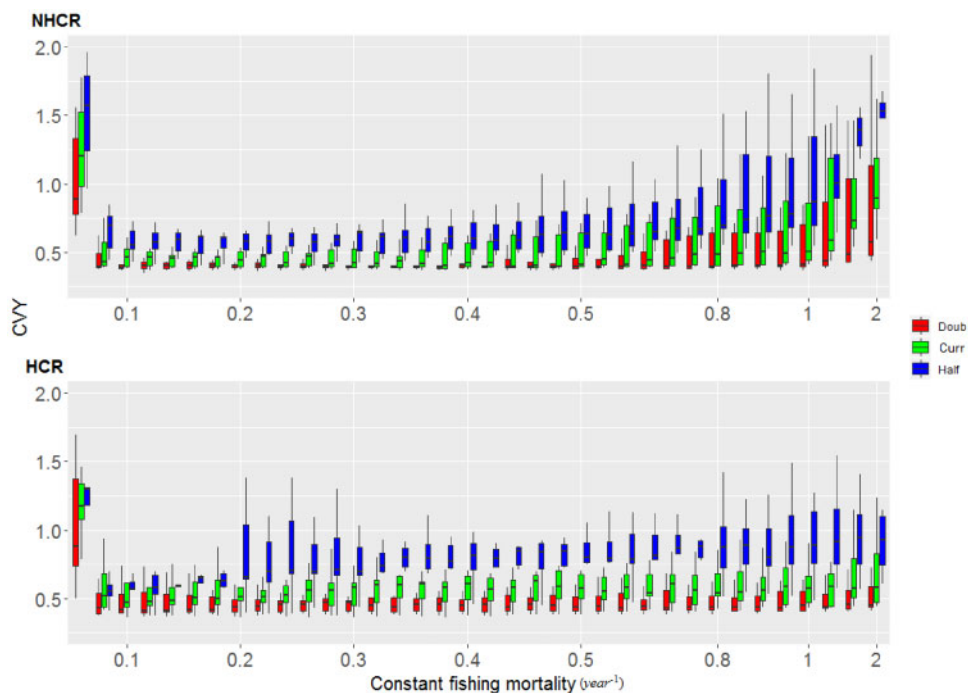
**Figure 9.** Comparisons of long-term system catches under varying plankton productivity states and harvest policies related to HCR in the MS-focused fishery scenario (a) Doub-NHCR, high plankton biomass without HCR; (b) Doub-HCR, high plankton biomass with HCR; (c) Curr-NHCR, current plankton biomass without HCR; (d) Curr-HCR, current plankton biomass with HCR; (e) Half-NHCR, low plankton biomass without HCR; (f) Half-HCR, low plankton biomass with HCR).



**Figure 10.** Comparisons of long-term system biomass under varying plankton productivity states and harvest policies related to HCR in the MS-focused fishery scenario (a) Doub-NHCR, high plankton biomass without HCR; (b) Doub-HCR, high plankton biomass with HCR; (c) Curr-NHCR, current plankton biomass without HCR; (d) Curr-HCR, current plankton biomass with HCR; (e) Half-NHCR, low plankton biomass without HCR; (f) Half-HCR, low plankton biomass with HCR).



**Figure 11.** Comparisons of the coefficients of variation of system biomass (CVB) (double square rooted) under various plankton productivity states of differing plankton biomass at high (Doub), current (Curr), and low (Half) levels without harvest control rule in fisheries management (NHCR, upper panel) and with harvest control rule in fisheries management (HCR, lower panel).



**Figure 12.** Comparisons of the coefficients of variation of system fisheries yield (CVY) (double square rooted) under various plankton productivity states of differing plankton biomass at high (Doub), current (Curr), and low (Half) levels without harvest control rules in fisheries management (NHCR, upper panel) and with harvest control rules in fisheries management (HCR, lower panel).

### Moving beyond SS-based BRPs

Developing BRPs is an essential component of decision-making for fisheries management (Restrepo *et al.*, 1998; Gabriel and

Mace, 1999; Sainsbury, 2008; Holsman *et al.*, 2016). While the literature supports development of reference points that account for multispecies interactions (Gislason, 1999; Collie and Gislason

2001; Walters *et al.*, 2005; Tyrrell *et al.*, 2011; Holsman *et al.*, 2016), in practice, reference points usually account only for SS population dynamics. However, advancement towards implementation of EBFM would benefit from development of EBRPs that account for key ecosystem processes and environmental changes (Link, 2010; Moffitt *et al.*, 2016).

SS stock assessments were available for all the exploited stocks included in our OSMOSE-PNCIMA model, including estimates of BRPs (King *et al.*, 2012; Forrest *et al.*, 2015a; Grandin and Forrest, 2017; DFO, 2018, 2019). For instance,  $F_{MSY}$  was estimated at  $0.298 \text{ year}^{-1}$  and  $0.312 \text{ year}^{-1}$  for Pacific Cod-QCS and Pacific Cod-HS, respectively (higher than the ecosystem-based  $F_{MSY}$  values estimated from OSMOSE-PNCIMA), although these were not adopted for management purposes (Forrest *et al.*, 2015a). For Lingcod,  $F_{MSY}$  was estimated at  $0.07 \text{ year}^{-1}$  and  $0.09 \text{ year}^{-1}$  for Lingcod-QCS and Lingcod-HS, respectively (lower than the ecosystem-based  $F_{MSY}$  values estimated from OSMOSE-PNCIMA) (King *et al.*, 2012). With the development of ecosystem models, it is now possible to explore ecosystem-based BRPs in fisheries management to better address issues associated with ecosystem processes and species interactions (Walters *et al.*, 2005; Smith *et al.*, 2015; Holsman *et al.*, 2016).

Over the last decade, managers and fisheries scientists globally were committing to the development of methods for integrating ecosystem considerations and objectives into the estimation of ecosystem-based BRPs (Link, 2010; Fogarty and McCarthy, 2014; Buchheister *et al.*, 2017). This study is the first attempt to investigate ecosystem-based  $F_{MSY}$  for seven fish stocks in PNCIMA by using OSMOSE-PNCIMA (Fu *et al.*, 2017). Although disparities exist between the previously estimated SS-based  $F_{MSY}$  and our currently estimated ecosystem-based  $F_{MSY}$ , such disparities were expected, and having also been noted by previous studies comparing SS and MS (or ecosystem-based) BRPs (Gislason, 1999; Holsman *et al.*, 2016; Moffitt *et al.*, 2016).

### EBRPs under various plankton productivity and fishing scenarios

While BRPs were usually assumed to be equilibrium-based, there was growing recognition that BRPs for fisheries management were not static quantities, but instead may shift due to either internal or external factors (Murawski *et al.*, 2001; Haltuch *et al.*, 2009; Haltuch and Punt, 2011). For example, Collie and Gislason (2001) illustrated that life-history parameters as well as external factors, such as climate change, regime shift, eutrophication, or other environmental fluctuations could affect the values of BRPs. Chang *et al.* (2011) demonstrated that high-temperature-induced extra mortality under global warming could affect stock productivity and BRPs values, resulting in high risk of overexploitation in the long term if these changes were not incorporated into fisheries management. Holsman *et al.* (2016) suggested that the inclusion of environmental variables in projections, such as the variability in water temperature, may have a strong effect on the estimation of BRPs (see also in Basson, 1999). Moreover, Tyrrell *et al.* (2011) showed that incorporating predation mortality led to more conservative BRPs. A recent study using an EwE model built for Mille Lacs Lake also highlighted the trophic and temperature effects on the MSY reference points estimation (Kumar *et al.*, 2017).

This study highlighted that ecosystem-based  $F_{MSY}$  and MSY were affected by plankton productivity states. This was generally

consistent with previous conclusions drawn by Heino *et al.* (2013) and Holsman *et al.* (2016), both of which showed the similar climatic effects on the estimation of BRPs. In addition, this study demonstrated that EBRPs were stock-specific in terms of the magnitude of difference in value among the three plankton productivity states. For instance, while EBRPs of Pacific Herring differed notably across the three plankton productivity states, those of Lingcod stocks did not show much difference among different plankton productivity states. Therefore, the impact of climate on EBRPs was stock-specific. Different variation of EBRPs in prey (e.g. Pacific Herring) and predator (e.g. Pacific Cod and Lingcod) stocks under various plankton productivity states may be due to the different trophic roles that these explored species play in the marine food web resulting in different trophic interactions (Travers-Trolet *et al.*, 2014; Fu *et al.*, 2017).

In addition, increasing values of  $F_{MSY}$  and MSY for Pacific Herring and Pacific Cod stocks from SS to MS scenarios, may mainly be due to the effects of fisheries interactions which is consistent with the previous findings from an Atlantis model in Benguela system (Smith *et al.*, 2015). In fact, exploitation of one species will invariably have some impact on other species in the system. Effective EBFM required an understanding of how a fishery that targets one species may indirectly affect other species in the same ecosystem. Competition and predator/prey interactions are important considerations in the design of sustainable fisheries management plans (Smith *et al.*, 2015; Fu *et al.*, 2017).

### Effects of HCR in fisheries management

Fisheries management required the evaluation of harvest polices to evaluate trade-offs among multiple objectives such as meeting conservation concerns and achieving sustainable economic benefits (Punt, 2017). Harvest polices with cutoff thresholds (i.e. LRP) may be more robust to adverse environmental regimes under which the average survival rate falls below the long-term average for extended periods (Fu *et al.*, 2000; King *et al.*, 2014; Punt *et al.*, 2014). To implement harvest polices with output controls (i.e. setting catch quotas), HCRs prescribe the annual fishing mortality as a function of stock status (Deroba and Bence, 2008). The purpose of implementing HCR was to reduce fishing mortality such that the stock biomass can grow to a target level where desirable economic outcomes are achieved and serious harm to the stock is avoided (Punt *et al.*, 2008; Sainsbury, 2008; DFO, 2009). In short, HCRs were explicit guidelines designed to prevent future stock collapses, allow rebuilding depleted stocks, or maintain stocks at healthy levels (Kvamsdal *et al.*, 2016).

Cutoff thresholds were often set at 25% of unfished equilibrium abundances or biomass (i.e.  $0.25 \times \text{SSB}_0$ , Thompson, 1993) and have been used for the management of Pacific Herring stocks in British Columbia, Canada since 1986 (Cleary *et al.*, 2010). Alternatively, the Department of Fisheries and Oceans Canada's harvest polices apply provisional LRP and OCP of  $0.4 \times B_{MSY}$  and  $0.8 \times B_{MSY}$ , respectively (DFO, 2006, 2009), and Kronlund *et al.* (2018) recently suggested a LRP of  $0.30 \times \text{SSB}_0$  for managing Herring Stocks in British Columbia, Canada. In an evaluation of common BRPs used in fisheries management, control rules based on estimated  $B_0$  and stock depletion may perform better than those based on the estimates of  $B_{MSY}$ , mainly because of the difficulty in estimating the latter (Haltuch *et al.*, 2009; Forrest *et al.*, 2018). Therefore in this study, we used  $0.30 \times \text{SSB}_0$  and  $0.60 \times \text{SSB}_0$  as LRP and OCP in the HCRs respectively (DFO, 2019), for

Pacific Herring, Pacific Cod, and Lingcod stocks. Results of our simulations generally showed that application of HCRs yielded higher system catch and system biomass as well as lower *CVY* and *CVB*, suggesting that fisheries management incorporating HCRs tended to maintain a more stable ecosystem and more sustainable fisheries.

However, different stocks responded quite differently to HCRs. For instance, HCRs were more effective for forage Pacific Herring stocks than for predatory Pacific Cod and Lingcod stocks. Different LRP of HCRs have often been derived for different stocks depending on their productivity (Forrest *et al.*, 2018; Kronlund *et al.*, 2018), data availability (Forrest *et al.*, 2015a; Holt *et al.*, 2016), and sometimes environmental variability (Froese *et al.*, 2011; Little *et al.*, 2011). Thus, further investigation of system- and stock-specific HCRs for Pacific Cod, and especially Lingcod was warranted in future research. Moreover, evaluation of the performance of alternative HCRs for stocks in a feedback simulation context was also important for evaluating acceptable outcomes and trade-offs (Haltuch *et al.*, 2009; Cleary *et al.*, 2010; Forrest *et al.*, 2018). More advanced simulations using the OSMOSE platform were underway for obtaining stock-specific thresholds of HCRs for these predatory stocks. Such ecosystem simulations can further explore alternative decisions on harvest rates and cutoff thresholds that explicitly consider the trade-offs among multiple ecosystem objectives, such as maintaining socio-economic outcomes, biodiversity and ecosystem health (Fulton *et al.*, 2014; Grüss *et al.*, 2016).

### Adapting fisheries management strategies in the face of climate and ocean changes

One of the core questions for fisheries scientists and managers was how to develop fisheries management strategies that are adaptive to uncertain environmental changes (Sumaila *et al.*, 2011; King *et al.*, 2014). For instance, Gaines *et al.* (2018) showed that improvement of fisheries management could offset many negative effects of climate change.

Our simulations compared the combined ecosystem effects of alternative plankton productivity states and fisheries management strategies, and may contribute to the development of adaptive fisheries management strategies in a changing environment for the PNCIMA ecosystem. For instance, when the plankton productivity state changed from low to high plankton biomass, the PNCIMA ecosystem tended to have higher system catch and system biomass but lower *CVY* and *CVB*, implying that more sustainable fisheries and stable ecosystem status was achieved. In addition, our simulation results generally concluded that to adapt to climate and ocean changes, incorporating suitable HCRs in fisheries management could benefit not only ecosystem health but also fisheries sustainability. The current study has taken a positive step forward by applying an ecosystem platform to facilitate the development of adaptive fisheries management strategies and the implementation of EBFM in a changing future.

### Conclusions and future work

Although more progress is needed, ecosystem models can play a critical role in helping fisheries scientists to account for key ecosystem processes and environmental changes in fisheries management and provide guidance on adaptation to future changes in climate and human activities (Fulton, 2010; Fulton *et al.*, 2014). With the application of the end-to-end OSMOSE model, this study has drawn the following conclusions that are potentially

important for the future fisheries management: (i) ecosystem-based BRPs complement SS BRPs by incorporating ecosystem considerations; and (ii) adopting HCRs can yield more stable ecosystem states and sustainable fisheries, especially in the face of climate and ocean changes.

This study, although not intended to provide tactical guidance regarding the fisheries management practices, helps build better knowledge of ecosystem-based BRPs and climate change impacts and may thus help identify future avenues towards EBFM. Future investigations may be aided by comparisons across a suite of models including minimum realistic models (Punt and Butterworth, 1995) and models of intermediate complexity (Plagányi *et al.*, 2014) which represent attempts to introduce explicit interactions between multiple species while retaining the model precision necessary for tactical decision-making. Moreover, management strategy evaluation, a decision support tool that has been increasingly used in fisheries management for the last decade (Fulton *et al.*, 2014; Grüss *et al.*, 2016; Punt *et al.*, 2016), can be conducted to determine the performance of the existing management strategy and to identify a “best” one among a set of candidate strategies. In addition, although plankton productivity employed in this study can be a useful forcing function for mimicking climate and ocean changes (Horwood *et al.*, 2000; Hays *et al.*, 2005), metabolic effects on fish from climate and ocean changes, such as water temperature, hypoxia, and ocean acidification, are also important considerations that have increasingly drawn attention over the last decade (Pörtner and Knust, 2007; Pörtner and Peck, 2010). Future simulations with ecosystem models may benefit from incorporating experimental results on metabolic impacts, directly or indirectly (e.g. reviewed in Koenigstein *et al.*, 2016). Last but not least, this paper only considered a single climate driver, an extension of this study could evaluate synergistic and/or antagonistic effects of multiple drivers like ocean warming, ocean acidification and fishing (Griffith *et al.*, 2012).

### Supplementary data

Supplementary material is available at the *ICESJMS* online version of the manuscript.

### Acknowledgements

We thank Jackie King and Jennifer Boldt for providing valuable comments on the earlier version of the manuscript. We are grateful to the following colleagues (listed alphabetically) who have generously provided different types of data: Leslie Barton, Jaclyn Cleary, Kristen Daniel, John Ford, Moira Galbraith, Chris Grandin, Kendra Holt, Jim Irvine, Sheena Majewski, John Morris, R. Ian Perry, Ian Stewart, Matt Thompson, and Marc Trudel.

### Funding

This research is funded by the Strategic Program for Ecosystem-based Research and Advice in Fisheries and Oceans Canada.

### References

- Barange, M., Merino, G., Blanchard, J. L., Scholtens, J., Harle, J., Allison, E. H., and Allen, J. I. 2014. Impacts of climate change on marine ecosystem production in societies dependent on fisheries. *Nature Climate Change*, 4: 211.
- Basson, M. 1999. The importance of environmental factors in the design of management procedures. *ICES Journal of Marine Science*, 56: 933–942.

- Beacham, T. D., Schweigert, J. F., MacConnachie, C., Le, K. D., and Flostrand, L. 2008. Use of microsatellites to determine population structure and migration of Pacific Herring in British Columbia and adjacent regions. *Transactions of the American Fisheries Society*, 137: 1795–1811.
- Braccini, M., Brooks, E. N., Wise, B., and McAuley, R. 2015. Displaying uncertainty in the biological reference points of sharks. *Ocean & Coastal Management*, 116: 143–149.
- Brown, C. J., Fulton, E. A., Hobday, A. J., Matear, R., Possingham, H., Bulman, C., Christensen, V. *et al.* 2010. Effects of climate-driven primary production change on marine food webs: implications for fisheries and conservation. *Global Change Biology*, 16: 1194–1212.
- Brunel, T., Piet, G. J., van Hal, R., and Röckmann, C. 2010. Performance of harvest control rules in a variable environment. *ICES Journal of Marine Science*, 67: 1051–1062.
- Buchheister, A., Miller, T. J., and Houde, E. D. 2017. Evaluating ecosystem-based reference points for Atlantic Menhaden. *Marine and Coastal Fisheries*, 9: 457–478.
- Carpenter, S. R., and Brock, W. A. 2006. Rising variance: a leading indicator of ecological transition. *Ecology Letters*, 9: 311–318.
- Chang, Y. J., Sun, C. L., Chen, Y., Zhang, Y., and Yeh, S. Z. 2011. Incorporating climate changes into population dynamic modelling: an individual-based modelling approach for lobster. *Canadian Journal of Fisheries and Aquatic Sciences*, 68: 122–136.
- Christensen, V., and Walters, C. J. 2004. Ecopath with Ecosim: methods, capabilities and limitations. *Ecological Modelling*, 172: 109–139.
- Clarke, K. R., and Warwick, R. M. 2001. *Changes in Marine Communities: An Approach to Statistical Analysis and Interpretation*, 2nd edn. PRIMER-E Ltd, Plymouth, UK.
- Cleary, J. S., Cox, S. P., and Schweigert, J. F. 2010. Performance evaluation of harvest control rules for Pacific Herring management in British Columbia, Canada. *ICES Journal of Marine Science*, 67: 2005–2011.
- Cleveland, W. S., and Devlin, S. J. 1988. Locally weighted regression: an approach to regression analysis by local fitting. *Journal of the American Statistical Association*, 83: 596–610.
- Collie, J. S., and Gislason, H. 2001. Biological reference points for fish stocks in a multispecies context. *Canadian Journal of Fisheries and Aquatic Sciences*, 58: 2167–2176.
- Cummins, P., Haigh, R., and Sidney, C. B. 2010. Ecosystem status and trends report for north coast and Hecate Strait ecozone. *Fisheries*, 8: 4B2.
- Deroba, J. J., and Bence, J. R. 2008. A review of harvest policies: understanding relative performance of control rules. *Fisheries Research*, 94: 210–223.
- DFO. 2006. A Harvest Strategy Compliant With the Precautionary Approach. DFO Can. Sci. Advis. Sec. Sci. Advis. Rep. 2006/023. [http://www.dfo-mpo.gc.ca/csas/Csas/status/2006/SAR-AS2006\\_023\\_E.pdf](http://www.dfo-mpo.gc.ca/csas/Csas/status/2006/SAR-AS2006_023_E.pdf) (last accessed 10 April 2018).
- DFO. 2009. A Fishery Decision-making Framework Incorporating the Precautionary Approach. <http://www.dfo-mpo.gc.ca/reports-rapports/regs/sff-cpd/precautioneng.html> (last accessed 10 April 2018).
- DFO. 2018. Walleye Pollock (*Theragra chalcogramma*) Stock Assessment for British Columbia in 2017. DFO Can. Sci. Advis. Sec. Sci. Advis. Rep. 2018/020.
- DFO. 2019. Status of Pacific Herring (*Clupea pallasii*) in 2018 and Forecast for 2019. DFO Can. Sci. Advis. Sec. Sci. Resp. 2019/001.
- Dolan, T. E., Patrick, W. S., and Link, J. S. 2016. Delineating the continuum of marine ecosystem-based management: a US fisheries reference point perspective. *ICES Journal of Marine Science*, 73: 1042–1050.
- Flostrand, L. A., Schweigert, J. F., Daniel, K. S., and Cleary, J. S. 2009. Measuring and modelling Pacific Herring spawning-site fidelity and dispersal using tag-recovery dispersal curves. *ICES Journal of Marine Science*, 66: 1754–1761.
- Fogarty, M. J., and McCarthy, J. J. (Eds). 2014. *Marine Ecosystem-based Management. The Sea. Ideas and Observations on Progress in the Study of the Seas*, 16. Harvard University Press, Cambridge, USA and London, UK.
- Foreman, M. G. G., Callendar, W., Masson, D., Morrison, J., and Fine, I. 2014. A model simulation of future oceanic conditions along the British Columbia continental shelf. Part II: results and analyses. *Atmosphere-Ocean*, 52: 20–38.
- Forrest, R. E., Holt, K. R., and Kronlund, A. R. 2018. Performance of alternative harvest control rules for two Pacific groundfish stocks with uncertain natural mortality: bias, robustness and trade-offs. *Fisheries Research*, 206: 259–286.
- Forrest, R. E., Rutherford, K. L., Lacko, L., Kronlund, A. R., Starr, P. J., and McClelland, E. K. 2015a. Assessment of Pacific Cod (*Gadus macrocephalus*) for Hecate Strait (5CD) and Queen Charlotte Sound (5AB) in 2013. DFO Can. Sci. Advis. Sec. Res. Doc. 2015/052. xii + 197 pp.
- Forrest, R. E., Savina, M., Fulton, E. A., and Pitcher, T. J. 2015b. Do marine ecosystem models give consistent policy evaluations? A comparison of Atlantis and Ecosim. *Fisheries Research*, 167: 293–312.
- Forrest, R. E., and Walters, C. J. 2009. Estimating thresholds to optimal harvest rate for long-lived, low-fecundity sharks accounting for selectivity and density dependence in recruitment. *Canadian Journal of Fisheries and Aquatic Sciences*, 66: 2062–2080.
- Froese, R., Branch, T. A., Proelß, A., Quaas, M., Sainsbury, K., and Zimmermann, C. 2011. Generic harvest control rules for European fisheries. *Fish and Fisheries*, 12: 340–351.
- Fu, C., Olsen, N., Taylor, N., Grüss, A., Batten, S., Liu, H., Verley, P. *et al.* 2017. Spatial and temporal dynamics of predator–prey species interactions off western Canada. *ICES Journal of Marine Science*, 74: 2107–2119.
- Fu, C., Perry, R. I., Shin, Y. J., Schweigert, J., and Liu, H. 2013. An ecosystem modelling framework for incorporating climate regime shifts into fisheries management. *Progress in Oceanography*, 115: 53–64.
- Fu, C., Quinn, T. J., and Kruse, G. H. 2000. Analyses of harvest strategies for pandalid shrimp populations. *Journal of Northwest Atlantic Fishery Science*, 27: 247–260.
- Fu, C., and Schweigert, J. 2004. Pacific Herring in Canada: generic framework for evaluating conservation limits and harvest strategies. *In Species Conservation and Management Case Studies*, Chapter 23, pp. 256–269. Ed. by H. R. Akcakaya, M. A. Burgman, O. Kindvall, C. C. Wood, P. Sjogren-Gulve, J. Hatfield and M. McCarthy. Oxford University Press, Oxford, UK.
- Fu, C., Travers-Trolet, M., Velez, L., Grüss, A., Bundy, A., Shannon, L. J., Fulton, E. A. *et al.* 2018. Risky business: the combined effects of fishing and changes in primary productivity on fish communities. *Ecological Modelling*, 368: 265–276.
- Fulton, E. A. 2010. Approaches to end-to-end ecosystem models. *Journal of Marine Systems*, 81: 171–183.
- Fulton, E. A., Smith, A. D., and Punt, A. E. 2005. Which ecological indicators can robustly detect effects of fishing? *ICES Journal of Marine Science*, 62: 540–551.
- Fulton, E. A., Smith, A. D., Smith, D. C., and Johnson, P. 2014. An integrated approach is needed for ecosystem based fisheries management: insights from ecosystem-level management strategy evaluation. *PLoS One*, 9: e84242.
- Gabriel, W. L., and Mace, P. M. 1999. A review of biological reference points in the context of the precautionary approach. *In Proceedings of the Fifth National NMFS Stock Assessment Workshop: Providing Scientific Advice to Implement the Precautionary Approach Under the Magnuson–Stevens Fishery Conservation and Management Act*, pp. 34–45. NOAA Tech Memo NMFS-F/SPO-40.

- Gaines, S. D., Costello, C., Owashi, B., Mangin, T., Bone, J., Molinos, J. G., and Burden, M. *et al.* 2018. Improved fisheries management could offset many negative effects of climate change. *Science Advances*, 4: eaao1378.
- Gislason, H. 1999. Single and multispecies reference points for Baltic fish stocks. *ICES Journal of Marine Science*, 56: 571–583.
- Grandin, C., and Forrest, R. 2017. Arrowtooth Flounder (*Atheresthes stomias*) Stock Assessment for the West Coast of British Columbia. DFO Can. Sci. Advis. Sec. Res. Doc. 2017/025. v + 87 pp.
- Griffith, G. P., Fulton, E. A., Gorton, R., and Richardson, A. J. 2012. Predicting interactions among fishing, ocean warming, and ocean acidification in a marine system with whole-ecosystem models. *Conservation Biology*, 26: 1145–1152.
- Grüss, A., Harford, W. J., Schirripa, M. J., Velez, L., Sagarese, S. R., Shin, Y. J., and Verley, P. 2016. Management strategy evaluation using the individual-based, multispecies modeling approach OSMOSE. *Ecological Modelling*, 340: 86–105.
- Hall, S. J., and Mainprize, B. 2004. Towards ecosystem-based fisheries management. *Fish and Fisheries*, 5: 1–20.
- Haltuch, M. A., and Punt, A. E. 2011. The promises and pitfalls of including decadal scale climate forcing of recruitment in groundfish stock assessment. *Canadian Journal of Fish and Aquatic Science*, 68: 912–926.
- Haltuch, M. A., Punt, A. E., and Dorn, M. W. 2009. Evaluating the estimation of fishery management reference points in a variable environment. *Fisheries Research*, 100: 42–56.
- Hays, G. C., Richardson, A. J., and Robinson, C. 2005. Climate change and marine plankton. *Trends in Ecology & Evolution*, 20: 337–344.
- Heino, M., Baulier, L., Boukal, D. S., Ernande, B., Johnston, F. D., Mollet, F. M., Pardoe, H. *et al.* 2013. Can fisheries-induced evolution shift reference points for fisheries management? *ICES Journal of Marine Science*, 70: 707–721.
- Holsman, K. K., Ianelli, J., Aydin, K., Punt, A. E., and Moffitt, E. A. 2016. A comparison of fisheries biological reference points estimated from temperature-specific multi-species and single-species climate-enhanced stock assessment models. *Deep Sea Research Part II: Topical Studies in Oceanography*, 134: 360–378.
- Holt, K. R., Starr, P. J., Haigh, R., and Krishka, B. 2016. Stock Assessment and Harvest Advice for Rock Sole (*Lepidopsetta* spp.) in British Columbia. DFO Can. Sci. Advis. Sec. Res. Doc. 2016/009. ix + 256 pp. <http://waves-vagues.dfo-mpo.gc.ca/Library/363948.pdf> (last accessed 10 April 2018).
- Horwood, J., Cushing, D., and Wyatt, T. 2000. Planktonic determination of variability and sustainability of fisheries. *Journal of Plankton Research*, 22: 1419–1422.
- King, J. R., McAllister, M., Holt, K. R., and Starr, P. J. 2012. Lingcod (*Ophiodon elongatus*) Stock Assessment and Yield Advice for Outside Stocks in British Columbia. DFO Can. Sci. Advis. Sec. Res. Doc. 2011/124. viii + 177 pp.
- King, J. R., McFarlane, G. A., and Punt, A. E. 2014. Shifts in fisheries management: adapting to regime shifts. *Philosophical Transactions of the Royal Society of London B: Biological Sciences*, 370: 20130277.
- Koenigstein, S., Mark, F. C., Gößling-Reisemann, S., Reuter, H., and Poertner, H. O. 2016. Modelling climate change impacts on marine fish populations: process-based integration of ocean warming, acidification and other environmental drivers. *Fish and Fisheries*, 17: 972–1004.
- Kronlund, A. R., Forrest, R. E., Cleary, J. S., and Grinnell, M. H. 2018. The Selection and Role of Limit Reference Points for Pacific Herring (*Clupea pallasii*) in British Columbia, Canada. DFO Can. Sci. Advis. Sec. Res. Doc. 2018/009. ix + 125 pp.
- Kumar, R., Pitcher, T. J., and Varkey, D. A. 2017. Ecosystem approach to fisheries: exploring environmental and trophic effects on Maximum Sustainable Yield (MSY) reference point estimates. *PLoS One*, 12: e0185575.
- Kvamsdal, S. F., Eide, A., Ekerhovd, N. A., Enberg, K., Gudmundsdottir, A., Hoel, A. H., Mills, K. E. *et al.* 2016. Harvest control rules in modern fisheries management. *Elementa: Science of the Anthropocene*, 4: 000114.
- Link, J. 2010. *Ecosystem-based Fisheries Management: Confronting Tradeoffs*. Cambridge University Press, Cambridge, UK.
- Little, L. R., Wayte, S. E., Tuck, G. N., Smith, A. D., Klaer, N., Haddon, M., Punt, A. E. *et al.* 2011. Development and evaluation of a CPUE-based harvest control rule for the southern and eastern scalefish and shark fishery of Australia. *ICES Journal of Marine Science*, 68: 1699–1705.
- Lucas, B. G., Verrin, S., and Brown, R. (Eds.) 2007. *Ecosystem Overview: Pacific North Coast Integrated Management Area (PNCIMA)*. Can. Tech. Rep. Fish. Aquat. Sci. 2667: xiii + 104 pp.
- Mace, P. M. 2001. A new role for MSY in single-species and ecosystem approaches to fisheries stock assessment and management. *Fish and Fisheries*, 2: 2–32.
- Moffitt, E. A., Punt, A. E., Holsman, K., Aydin, K. Y., Ianelli, J. N., and Ortiz, I. 2016. Moving towards ecosystem-based fisheries management: options for parameterizing multi-species biological reference points. *Deep Sea Research Part II: Topical Studies in Oceanography*, 134: 350–359.
- Morrison, J., Callendar, W., Foreman, M. G. G., Masson, D., and Fine, I. 2014. A model simulation of future oceanic conditions along the British Columbia continental shelf. Part I: forcing fields and initial conditions. *Atmosphere-Ocean*, 52: 1–19.
- Murawski, S. A., Rago, P. J., and Trippel, E. A. 2001. Impacts of demographic variation in spawning characteristics on reference points for fishery management. *ICES Journal of Marine Science*, 58: 1002–1014.
- Payne, M. R., Hobday, A. J., MacKenzie, B. R., Tommasi, D., Dempsey, D. P., Fässler, S. M., Haynie, A. C. *et al.* 2017. Lessons from the first generation of marine ecological forecast products. *Frontiers in Marine Science*, 4: 289.
- Plagányi, É. E. 2007. Models for an ecosystem approach to fisheries (No. 477). *Food & Agriculture Organization*.
- Plagányi, É. E., Punt, A. E., Hillary, R., Morello, E. B., Thébaud, O., Hutton, T., Pillans, R. D. *et al.* 2014. Multispecies fisheries management and conservation: tactical applications using models of intermediate complexity. *Fish and Fisheries*, 15: 1–22.
- Pörtner, H. O., and Knust, R. 2007. Climate change affects marine fishes through the oxygen limitation of thermal tolerance. *Science*, 315: 95–97.
- Pörtner, H. O., and Peck, M. A. 2010. Climate change effects on fishes and fisheries: towards a cause-and-effect understanding. *Journal of Fish Biology*, 77: 1745–1779.
- Punt, A. E. 2011. The impact of climate change on the performance of rebuilding strategies for overfished groundfish species of the US west coast. *Fisheries Research*, 109: 320–329.
- Punt, A. E. 2017. Strategic management decision-making in a complex world: quantifying, understanding, and using trade-offs. *ICES Journal of Marine Science*, 74: 499–510.
- Punt, A. E., A'mar, T., Bond, N. A., Butterworth, D. S., de Moor, C. L., De Oliveira, J. A. A., Haltuch, M. A. *et al.* 2014. Fisheries management under climate and environmental uncertainty: control rules and performance simulation. *ICES Journal of Marine Science*, 71: 2208–2220.
- Punt, A. E., and Butterworth, D. S. 1995. The effects of future consumption by the Cape fur seal on catches and catch rates of the Cape hakes. 4. Modelling the biological interaction between Cape fur seals *Arctocephalus pusillus pusillus* and the Cape hakes *Merluccius capensis* and *M. paradoxus*. *South African Journal of Marine Science*, 16: 255–285.

- Punt, A. E., Butterworth, D. S., de Moor, C. L., De Oliveira, J. A. A., and Haddon, M. 2016. Management strategy evaluation: best practices. *Fish and Fisheries*, 17: 303–334.
- Punt, A. E., Dorn, M. W., and Haltuch, M. A. 2008. Evaluation of threshold management strategies for groundfish off the U.S. West Coast. *Fisheries Research*, 94: 251–266.
- Punt, A. E., and Ralston, S. 2007. A management strategy evaluation of rebuilding revision rules for overfished rockfish stocks. *In Proceedings of the 2005 Lowell Wakefield Symposium-biology, Assessment, and Management of North Pacific Rockfishes*, pp. 329–351. Ed. by J. Heifetz, J. Dicosimo, A. J. Gharrett, M. S. Love, V. M. O'Connell, and R. D. Stanley. Alaska Sea Grant College Program AK-SG-07-01. University of Alaska, Fairbanks.
- Punt, A. E., and Smith, A. D. M. 2001. The gospel of maximum sustainable yield in fisheries management: birth, crucifixion and reincarnation. *In Conservation of Exploited Species*, pp. 41–66. Ed. by J. D. Reynolds, G. M. Mace, K. H. Redford, and J. G. Robinson. Cambridge University Press, Cambridge.
- Restrepo, V. R., Thompson, G. G., Mace, P. M., Gabriel, W. L., Low, L. L., MacCall, A. D., Methot, R. D. *et al.* 1998. Technical Guidance on the Use of Precautionary Approaches to Implementing National Standard 1 of the Magnuson-Stevens Fishery Conservation and Management Act. NOAA Technical Memorandum NMFS-F/SPO-31. 54 pp.
- Sainsbury, K. 2008. Best Practice Reference Points for Australian Fisheries. A Report to Australian Fisheries Management Authority and the Department of the Environment, Water, Heritage and the Arts. R2001/0999. 157 pp.
- Shin, Y. J., and Cury, P. 2004. Using an individual-based model of fish assemblages to study the response of size spectra to changes in fishing. *Canadian Journal of Fisheries and Aquatic Sciences*, 61: 414–431.
- Shin, Y. J., Shannon, L. J., Bundy, A., Coll, M., Aydin, K., Bez, N., Blanchard, J. L. *et al.* 2010. Using indicators for evaluating, comparing, and communicating the ecological status of exploited marine ecosystems. 2. Setting the scene. *ICES Journal of Marine Science*, 67: 692–716.
- Smith, M. D., Fulton, E. A., and Day, R. W. 2015. An investigation into fisheries interaction effects using Atlantis. *ICES Journal of Marine Science*, 72: 275–283.
- Sumaila, U. R., Cheung, W. W., Lam, V. W., Pauly, D., and Herrick, S. 2011. Climate change impacts on the biophysics and economics of world fisheries. *Nature Climate Change*, 1: 449.
- Thompson, G. G. 1993. A proposal for a threshold stock size and maximum fishing mortality rate. *Canadian special publication of fisheries and aquatic sciences*, 303–320.
- Travers, M., Shin, Y. J., Jennings, S., and Cury, P. 2007. Towards end-to-end models for investigating the effects of climate and fishing in marine ecosystems. *Progress in Oceanography*, 75: 751–770.
- Travers-Trolet, M., Shin, Y. J., Shannon, L. J., Moloney, C. L., and Field, J. G. 2014. Combined fishing and climate forcing in the southern Benguela upwelling ecosystem: an end-to-end modelling approach reveals dampened effects. *PLoS One*, 9: 1–9.
- Tyrrell, M. C., Link, J. S., and Moustahfid, H. 2011. The importance of including predation in fish population models: implications for biological reference points. *Fisheries Research*, 108: 1–8.
- Walters, C. J., Christensen, V., Martell, S. J., and Kitchell, J. F. 2005. Possible ecosystem impacts of applying MSY policies from single-species assessment. *ICES Journal of Marine Science*, 62: 558–568.
- Yemane, D., Shin, Y. J., and Field, J. G. 2008. Exploring the effect of Marine Protected Areas on the dynamics of fish communities in the southern Benguela: an individual-based modelling approach. *ICES Journal of Marine Science*, 66: 378–387.

Handling editor: Jason Link