



HAL
open science

Plant hydraulic architecture through time: lessons and questions on the evolution of vascular systems

Anne-Laure Decombeix, Anais Boura, Alexandru Tomescu

► **To cite this version:**

Anne-Laure Decombeix, Anais Boura, Alexandru Tomescu. Plant hydraulic architecture through time: lessons and questions on the evolution of vascular systems. *IAWA Journal*, 2019, pp.1-34. 10.1163/22941932-40190254 . hal-02271765

HAL Id: hal-02271765

<https://hal.umontpellier.fr/hal-02271765>

Submitted on 12 Oct 2021

HAL is a multi-disciplinary open access archive for the deposit and dissemination of scientific research documents, whether they are published or not. The documents may come from teaching and research institutions in France or abroad, or from public or private research centers.

L'archive ouverte pluridisciplinaire **HAL**, est destinée au dépôt et à la diffusion de documents scientifiques de niveau recherche, publiés ou non, émanant des établissements d'enseignement et de recherche français ou étrangers, des laboratoires publics ou privés.

Running title: Hydraulic architecture through time

Plant hydraulic architecture through time: lessons and questions on the evolution of vascular systems

Anne-Laure Decombeix¹, Anaïs Boura² & Alexandru M.F. Tomescu³

¹*AMAP, Université de Montpellier, CIRAD, CNRS, INRA, IRD, Montpellier, France*

²*CR2P, Sorbonne Université, MNHN, CNRS, Paris, France*

³*Department of Biological Sciences, Humboldt State University, Arcata, California 95521, USA*

ABSTRACT

Studies of anatomically preserved fossils provide a wealth of information on the evolution of plant vascular systems through time, from the oldest evidence of vascular plants more than 400 million years ago to the rise of the modern angiosperm-dominated flora. In reviewing the key contributions of the fossil record, we discuss knowledge gaps and major outstanding questions about the processes attending the evolution of vascular systems. The appearance and diversification of early vascular plants in the late Silurian-Devonian was accompanied by the evolution of different types of tracheids, which initially improved the hydraulics of conduction but had less of a mechanical support function. This was followed in the Devonian and Carboniferous by an increase in complexity of the organization of primary vascular tissues, with different types of steles evolving in response to mechanical, hydraulic, and developmental regulatory constraints. Concurrently, secondary vascular tissues, such as wood, produced by unifacial or bifacial cambia are documented in a wide array of plant

1 groups, including some that do not undergo secondary growth today. While wood production
2 has traditionally been thought to have evolved independently in different lineages,
3
4 accumulating evidence suggests that this taxonomic breadth reflects mosaic deployment of
5
6 basic developmental mechanisms, some of which are derived by common ancestry. For most
7
8 of vascular plant history, wood contained a single type of conducting element: tracheids
9
10 (homoxyle). However, quantitative (e.g. diameter and length) and qualitative (e.g. pitting
11
12 type) diversity of these tracheids allowed various taxa to cover a broad range of hydraulic
13
14 properties. A second type of conducting elements vessels, is first documented in an extinct
15
16 late Permian (c. 260 Ma) group. While the putative hydraulic advantages of vessels are still
17
18 debated, wood characterized by presence of vessels (heteroxyle) would become the dominant
19
20 type, following the diversification of angiosperms during the Cretaceous.
21
22
23
24
25
26
27
28

29 **KEYWORDS:** fossil; xylem; tracheids; vessels; Paleozoic; Mesozoic; wood; cambium.
30
31
32
33

34 INTRODUCTION

35
36 The term “hydraulic architecture” was first used in the title of a 1978 paper by Martin
37
38 Zimmermann that compared water flow in different parts of trees with diffuse porous wood.
39
40 Hydraulic architecture has since received several definitions (see Cruziat *et al.* 2002 for a
41
42 review), the simplest and most general of which defines it as “the structure of the water
43
44 conducting system” (Tyree & Ewers 1991). The functioning of plants as hydraulic systems
45
46 has always intrigued botanists and the continued development of new techniques to assess and
47
48 quantify xylem hydraulic properties has provided a wealth of data on the physical laws and
49
50 structure-function relationships that control water flow in plants (McCulloh *et al.* 2003; Hacke
51
52 *et al.* 2005; Sperry *et al.* 2006, 2008; Choat *et al.* 2008; Pittermann *et al.* 2011).
53
54
55
56
57
58 Understanding the anatomy of vascular tissues, the pipelines of the plant’s hydraulic system
59
60
61
62
63
64
65

1 and reticulate or pitted. Pits are cell wall areas without secondary wall (i.e., holes in the
2 secondary wall), through which water can move from one cell to the next, typically through a
3 permeable membrane formed by the primary wall and middle lamella.
4
5

6
7 Microscopic tubes with internal thickenings found in early Silurian to Early Devonian
8
9 (c. 440-410 Ma) deposits were initially interpreted as fossil tracheids (Martin 1971).
10

11 However, the wall ultrastructure of these banded tubes is distinctly different from that of
12 vascular plant tracheary elements (tracheids and vessels) and their role, as well as the
13 organisms they belonged to, remain highly conjectural (Gray & Boucot 1977; Taylor &
14 Wellman 2009). The oldest unequivocal tracheids are a little younger, dating back to the late
15 Silurian-Early Devonian, a little over 400 million years ago (Edwards & Davies 1976). Early
16 Devonian coalified fragments of *Cooksonia* (Paratracheophyta) possess a central strand
17 composed of a few tracheids that are 2-11 μm in diameter (Lang 1937; Edwards *et al.* 1992).
18 Because *Cooksonia* is first recorded in the Silurian (Fig. 2), and tracheids have also been
19 reported from late Silurian sterile axes in a fossil assemblage containing *Cooksonia-type*
20 sporangia (Edwards & Davies 1976), *Cooksonia* is traditionally regarded as the oldest
21 vascular plant. However, the anatomy of Silurian *Cooksonia* specimens is unknown and since
22 recent analyses show that the various species of the genus do not form a monophyletic group
23 (Gonez & Gerrienne 2010), the vascular plant status of the oldest *Cooksonia* remains
24 equivocal.
25
26
27
28
29
30
31
32
33
34
35
36
37
38
39
40
41
42
43
44

45 Investigations of early tracheids with scanning electron microscopy, starting in the
46 1990s, have led to the recognition of several types that are based on the structure of their wall
47 thickenings (Kenrick & Crane 1991; Friedman & Cook 2000; Edwards 2003; Fig. 3). S-type
48 tracheids have large and simple annular or helical thickenings. The spongy material of the
49 wall thickenings is covered on the lumen side by a thin decay-resistant microporate layer
50 (Kenrick & Crane 1997; Fig. 3B). S-type tracheids, named after the first fossil plant in which
51
52
53
54
55
56
57
58
59
60
61
62
63
64
65

1 they were described, *Sennicaulis* (Paratracheophyta, Fig. 1), are also found in a few other
2 fossil plants of Early and Middle Devonian age (Pfeiler & Tomescu 2018). The G-type
3 tracheid, exemplified by the fossil plant *Gosslingia* (Zosterophyllales, Fig. 1), has annular or
4 helical thickenings that can take a scalariform or reticulate aspect through the development of
5 connections between horizontal thickenings. The cell wall between thickenings bears multiple
6 minute perforations (Fig. 3C). G-type tracheids are found in some early representatives of the
7 lycopsids and their extinct precursors, the zosterophylls. Tracheids of the P-type, exemplified
8 by *Psilophyton* (Trimerophyta, Fig. 1), have bordered pits that are scalariform, more rarely
9 almost circular (Edwards 2003). Unlike the bordered pits found in the tracheids of extant
10 plants, their relatively large apertures are covered by a characteristic perforate membrane
11 made of secondary wall material (Fig. 3D). This peculiarity is found in basal members of the
12 euphyllophytes (Kenrick & Crane 1997; Strullu-Derrien *et al.* 2014; Bickner & Tomescu this
13 issue, Fig. 1), the clade that comprises all living non-lycopsid tracheophytes and their extinct
14 relatives, also known as Trimerophyta. The tracheids of some fossil and extant lycopsids also
15 possess a perforated membrane or fimbrials (“Williamson’s striations”) across the scalariform
16 pit aperture (Cichan *et al.* 1981), but it is unknown whether these structures are homologous
17 to the ones observed in early euphyllophytes (Edwards 2003). Interestingly, some Devonian
18 taxa show a combination of different types of tracheids within a single plant. This is the case
19 for example in an unnamed fossil from the Early Devonian of Norway in which the main axis
20 has G-type tracheids, while the tracheids of lateral branches possess circular to scalariform or
21 reticulate bordered pits (Edwards *et al.* 2006).

22
23
24
25
26
27
28
29
30
31
32
33
34
35
36
37
38
39
40
41
42
43
44
45
46
47
48
49
50
51 Some of the most emblematic representatives of early vascular plants were found
52 silicified in hydrothermal cherts from the Rhynie area in Aberdeenshire, Scotland (mid-
53 Pragian-?earliest Emsian; Edwards *et al.* 2017). While these cherts preserve the vegetation of
54 unusual environments (volcanic hot springs) (Wellman 2018), they have yielded some of the
55
56
57
58
59
60
61
62
63
64
65

1 best anatomically preserved fossil plants from the Early Devonian interval. Among them,
2 *Aglaophyton* (Protracheophyta), *Rhynia* (Paratracheophyta), *Asteroxylon* (Drepanophycales),
3
4 and *Horneophyton* (Horneophyta) are all small plants (<20 cm tall) that lack leaves and true
5 roots and illustrate different stages in the evolution of vascular systems. In *Aglaophyton*, the
6 water conducting cells lack wall thickenings of the kind typically seen in tracheids. Because
7 these cells have a structure intermediate between true tracheids and the hydroids found in
8 bryophytes, *Aglaophyton* is considered a protracheophyte, not a true vascular plant. *Rhynia*,
9 on the other hand, possesses true tracheids with annular to helical thickenings (S-type). The
10 tracheids of *Asteroxylon* are of the G-type. Analyses of fossil cell wall chemistry by Boyce *et*
11 *al.* (2003) have shown that the tracheids of *Rhynia* were likely unlignified, whereas those of
12 *Asteroxylon* were heavily lignified. A fourth plant found in the Rhynie chert, *Horneophyton*,
13 was regarded as another protracheophyte, but recently Cascales-Miñana *et al.* (2019)
14 documented cells with irregular, annular to helical wall thickenings of putative secondary
15 origin. They interpreted these cells as representing a new intermediate, this time between the
16 simple cells without secondary thickenings found in protracheophytes, such as *Aglaophyton*,
17 and the true tracheids found in *Rhynia* or *Asteroxylon*.

18
19
20
21
22
23
24
25
26
27
28
29
30
31
32
33
34
35
36
37
38
39 Biomechanical studies by Speck and Vogellehner (1988, 1992) showed that the
40 tracheids of the first vascular plants did not contribute much to the flexural stiffness of axes,
41 of which >80-90% could be attributed to either turgor pressure in the parenchymatous cortex,
42 or to a sclerified hypodermal sterome. The observed increase in the complexity and strength
43 of tracheid secondary wall thickenings is, thus, likely linked to maintenance of their water
44 conducting properties, i.e., improved resistance to inward collapse and cavitation (Carlquist
45 1975; Hacke *et al.* 2001), in correlation with the trend of increasing tracheid diameters for
46 increased water conductivity that was documented for the Devonian (Niklas 1994). Thus, a
47 first important lesson from the fossil record is that the early evolution of vascular tissues was
48
49
50
51
52
53
54
55
56
57
58
59
60
61
62
63
64
65

1
2 in all likelihood not under the constraint of a compromise between hydraulic and mechanical
3 functions.

4
5 A significant time interval separates the oldest fossil evidence of land plants (Fig. 1),
6 represented by middle Ordovician spores (Rubinstein *et al.* 2010), and the diversification of
7 vascular plants in the Early Devonian. However, it is important to note that the oldest
8 evidence for plants with vascular tissue consists of late Silurian macrofossils (Kotik *et al.*
9 2002; Libertin *et al.* 2018) and possibly of hilate/trilete spores of early Silurian age (Gray &
10 Boucot 1977; Steemans *et al.* 2009). The age disparity between these different types of fossils
11 may be a reflection of different biases in taphonomy, geographic sampling, or the nature of
12 the rock record, with respect to different plant parts and fragments. Vascular tissues are
13 known to be quite resistant to degradation, thus, early vascular plants are expected to be better
14 preserved than other types of plants. Kenrick *et al.* (2012) argue that the paucity of their
15 remains before the late Silurian-Early Devonian could be due to biases, including (1) the poor
16 prospection of the supercontinent Gondwana, which corresponded to today's southern
17 continents and where land colonization by plants might have started (Steemans *et al.* 2009),
18 and (2) the paucity of terrestrial deposits that pre-date the latest Silurian and that are exposed
19 today, especially those representing fluvial or lacustrine depositional environments in which
20 most early vascular plant remains are typically found. Until these potential biases are better
21 understood and addressed, the tempo of evolution of plant vascular tissues following the
22 initial colonization of land and the possible underlying processes cannot be assessed with
23 confidence. The most recent timescale of plant evolution using fossil calibrations and genetic
24 data (Morris *et al.* 2018) proposes a middle Cambrian to Early Ordovician age for crown
25 embryophytes and a Late Ordovician to Silurian age for crown tracheophytes.
26
27
28
29
30
31
32
33
34
35
36
37
38
39
40
41
42
43
44
45
46
47
48
49
50
51
52
53
54
55
56
57

58 **THE INCREASE IN COMPLEXITY OF THE PRIMARY VASCULAR SYSTEM**

59
60
61
62
63
64
65

1 During the Devonian, major innovations, such as the appearance of leaves (Sanders *et*
2 *al.* 2009; Langdale & Harrison 2008; Tomescu 2009; Galtier 2010), the evolution of root
3 systems (Boyce 2005; Hetherington & Dolan 2018), or the appearance of pseudomonopodial
4 branching - with morphological differentiation of a main axis and subordinate lateral branches
5 (Gensel *et al.* 2001), led to an increase in complexity of plant architecture (Chomicki *et al.*
6 2017; Bonacorsi & Leslie 2019; Crepet & Niklas 2019). This was paralleled by an increase in
7 complexity of the organization of the primary vascular tissues and the appearance of new
8 types of steles (Figs.4-5). The stele of an axis includes the tissues derived from the
9 procambium. In terms of mature tissues, this translates into vascular tissues (xylem and
10 phloem) and associated ground tissues (such as the pericycle, leaf gaps, interfascicular areas) -
11 these issues are discussed in detail in an upcoming paper by Tomescu (work in progress).

12 In the most simple type of stele, the protostele, there is no pith and vascular tissues
13 form a central strand. This type of stele, present throughout the entire geologic time scale of
14 tracheophytes, occurs today in some taxa such as *Lycopodium* (Lycopodiales), *Psilotum*
15 (Psilotidae), or *Gleichenia* (Glecheniales). A protostele is also the vascular organization found
16 in the vast majority of roots, independently of their systematic affinities (Esau 1965; Beck
17 2005). The oldest type of protostele, the haplostele, has circular to elliptical shape in cross-
18 section, with the xylem located in the center (Fig.4A-C). This architecture is typical of the
19 earliest vascular plants (Kenrick & Crane 1997; Fig. 2). Another type of protostele that
20 became common in the Middle Devonian is the actinostele, in which the xylem has a lobed or
21 star-shaped structure in cross-section (Figs.4D-F). Actinosteles are found in many Middle and
22 Late Devonian taxa, including lycopsids, cladoxyloids (i.e., Iridopteridales and
23 Pseudosporochnales, Fig. 1), progymnosperms, Stenokoleales, and the first spermatophytes
24 (Scheckler 1974, 1976; Beck & Stein 1993; Rothwell & Serbet 1994; Momont *et al.* 2016;
25 Toledo *et al.* 2018; Fig.4F).

1
2 The development of a central pith led to a new major type of stele, in which the
3 vascular tissues form a hollow cylinder (with pith at the center), the siphonostele (Beck *et al.*
4 1982; Stewart and Rothwell 1993). The vascular cylinder can be interrupted by leaf gaps
5 where vascular traces diverge toward the leaves (Fig.4J-L). Various types of siphonosteles are
6 present from the Late Carboniferous on, especially among the filicopsids (e.g., Phillips 1974;
7 Beck *et al.* 1982; Rothwell 1999; Schneider *et al.* 2002). Late Devonian and Carboniferous
8 lycopsid trees such as *Sublepidodendron* and *Paralycopodites* have vascular tissues arranged
9 in a hollow cylinder in the largest part of their stems (Eggert 1961), but they lack leaf gaps
10 and the question of whether these represent true siphonosteles is still debated. A variation of
11 the siphonostele is the dictyostele, in which leaf gaps are long (tall) and overlap vertically,
12 giving the impression of a dissected vascular system (Fig.5A-C). The oldest dictyosteles date
13 from the Carboniferous, as seen for example in the marattialean tree fern *Psaronius*
14 (Delevoryas 1964; Fig.5C). Today they are found in many ferns, such as *Osmunda*
15 (*Osmundales*, Fig. 1) or the tree fern *Dicksonia* (*Cyatheales*) (Bower 1926).
16
17
18
19
20
21
22
23
24
25
26
27
28
29
30
31
32

33
34 In the eustele, which is typically found in spermatophytes, the vascular tissues are
35 organized as discrete longitudinal sympodia around the pith (Fig.5D-F). The oldest example
36 of this type of organization is seen in the Middle Devonian progymnosperm *Archaeopteris*
37 (Scheckler 1978; Beck 1979; Fig.5F). Eusteles become more common following the
38 diversification of seed plants in the Carboniferous, a period during which they are found in
39 Cordaitales, early conifers (*Voltziales*), and various families of pteridosperms. Today,
40 eusteles featuring more or less complex connections between the xylem of the stem and that
41 of branches and leaves (Namboodiri & Beck 1968; Beck *et al.* 1982) characterize the
42 gymnosperms and angiosperms. Some monocotyledons have a modified eustele in which the
43 sympodia are arranged in multiple concentric cycles (Beck *et al.* 1982). These multiple
44 sympodia, in combination with the multiple leaf traces diverging from them, produce the
45
46
47
48
49
50
51
52
53
54
55
56
57
58
59
60
61
62
63
64
65

1 impression of vascular bundles scattered randomly throughout the ground tissue and preclude
2 recognition of a typical pith or cortex (Fig.5G-I). This type of eustele, called an atactostele, is
3
4 first documented in fossil palm trunks (*Palmoxylon*; Fig.5I) from the Late Cretaceous
5
6
7 (Santonian-Campanian, and possibly as old as the Turonian; Crié 1892; Berry 1916).
8

9
10 Several Middle Devonian to Early Carboniferous plants assigned to the extinct group
11
12 of the cladoxyloids displayed a vascular system with numerous separate xylem strands of
13
14 various size and shape in transverse section. The number of strands ranges from a few in some
15
16 specimens of *Xenocladia* (Pseudosporochnales) (Arnold 1952; Fig.4I) or *Cladoxylon*
17
18 (Pseudosporochnales) (Bertrand 1935) to over 130 in the Late Devonian tree *Xinicaulis*
19
20 (Cladoxyloid) (Xu *et al.* 2017). Stewart and Rothwell (1993) interpreted this organisation as
21
22 a transition from an actinostele to a plectostele, a type of protostele in which the xylem and
23
24 phloem are arranged in alternating plates or U or V-shaped bands (in cross section) (Fig.4G-
25
26 I); in the most extreme cases, the central strands are absent and the architecture resembles that
27
28
29 of a eustele.
30
31
32

33
34 While the diversity of stelar anatomy and the evolutionary pathways that led from one
35
36 type of stele to another have been the subject of many hypotheses and discussions, very little
37
38 is certain regarding the processes driving the diversification of stelar organization in the
39
40 Devonian and thereafter. Different scenarios involving several categories of factors have been
41
42 considered.
43
44

45
46 (1) Increasing mechanical demands. Walter Zimmerman was one of the first proponents of
47
48 this mechanical hypothesis (Zimmermann 1959). Because the most peripheral tissues of the
49
50 axis are the ones that have the highest impact on resistance to bending forces, the arrangement
51
52 of the xylem at the periphery of a pith vs. at the center of the axis provides more stiffness
53
54 (Speck & Vogellehner 1988). This suggests that the evolution of stelar organizations that
55
56
57
58
59
60
61
62
63
64
65

1 include a pith may have been driven, at least in part, by mechanical constraints associated
2 with increase in size.
3

4 (2) Increasing demand of fluid transport. F.O. Bower proposed in 1908 the hypothesis that the
5 stele increased in complexity in order to optimize water transport in plants that were evolving
6 larger sizes and more complex organization (Bower 1908). The development of a central pith
7 and peripheral xylem minimizes the distances between the water conducting cells and other
8 tissues while limiting the amount of energy spent on producing expensive xylem cells (Raven
9 1994; Roth & Mossbruger 1996). Thus, such hydraulic demands may have represented a
10 different type of driver in the evolution of the pith.
11

12 (3) Changes in hormonal signals linked to the evolution of lateral organs. Building on earlier
13 ideas formulated by Wight (1987), Stein (1993) modelled how the evolution of stelar
14 architecture can be linked to the gradients of auxin produced by more complex lateral
15 appendages (branches, leaves). Stein's models support an origin of pith at the center of the
16 stele related to changes in shoot apex geometry under different hormonal gradient regimes,
17 and the dissection of the stele into discrete vascular bundles as a result of changing receptivity
18 to hormonal signaling.
19

20 In all likelihood, combinations of these different factors, which are not mutually
21 exclusive, were responsible for stelar evolution in different groups, especially since the
22 increase in complexity of lateral organs has a direct impact on the biomechanical and
23 hydraulic demands of the plant, in addition to driving shifts in hormonal signaling patterns
24 and homeostasis. It is also possible that these factors had different relative importance in
25 shaping the vascular systems of different plant lineages. Leaves evolved independently in the
26 two major tracheophyte groups - the lycopsids and euphyllophytes - and then, again,
27 independently in several euphyllophyte groups (Tomescu 2009; Sanders *et al.* 2009; Galtier
28 2010). Given their independent origins, as well as differences in their developmental,
29
30
31
32
33
34
35
36
37
38
39
40
41
42
43
44
45
46
47
48
49
50
51
52
53
54
55
56
57
58
59
60
61
62
63
64
65

1 anatomical, and physiological relationships with subtending stems, specific to each lineage,
2 the advent of leaves must have had different impacts on the architecture of the vascular
3 system in each of these lineages. Nevertheless, the evolution of leaves, along with that of
4 roots (also thought to have evolved independently, at least between the lycopsids and
5 euphyllophytes; Boyce 2005; Hetherington & Dolan 2018), and with the general increase in
6 plant size, led to increasingly more complex plant architectures. These are all factors that can
7 be linked to the increase in complexity of the architecture of the primary vascular system.
8
9
10
11
12
13
14
15
16
17
18

19 **VASCULAR CAMBIA AND SECONDARY GROWTH**

20
21 Another major event in plant evolution that occurred during the Devonian is the
22 advent of the vascular cambium, a lateral meristem producing secondary vascular
23 tissues. Two types can be distinguished: unifacial cambium, producing only secondary xylem
24 (wood), and bifacial cambium that produces secondary xylem on one side and secondary
25 phloem on the other side. Like other meristems, the vascular cambium can have permanent
26 activity, leading to indeterminate growth, or can cease functioning at a genetically determined
27 point, leading to determinate growth. Today, all plants with secondary vascular tissue - with
28 the possible exception of the lycopsid *Isoetes* (Isoetales; Fig.6A-B)- are seed plants and have
29 a bifacial cambium with indeterminate growth. In *Isoetes*, a cambial layer (the lateral
30 meristem) produces a “prismatic layer” (consisting of tracheids and sieve cells) toward the
31 inside and a thin layer of parenchymatous tissue toward the outside (Paolillo 1963; Gifford &
32 Foster 1989). Although functionally bifacial, this cambial layer produces vascular tissues only
33 on one of its sides, like the unifacial cambia. Compared to the dearth of lineages exhibiting
34 vascular cambial growth in the modern flora, the fossil record reveals a much broader
35 diversity of modes of secondary growth (Tomescu & Groover 2019; Fig.6).
36
37
38
39
40
41
42
43
44
45
46
47
48
49
50
51
52
53
54
55
56
57
58
59
60
61
62
63
64
65

1
2 To date, the oldest known occurrences of secondary xylem are known from the Early
3 Devonian euphyllophytes *Armoricaphyton* (Strullu-Derrien *et al.* 2014; Gerrienne and Gensel
4 2016) from France and *Franhueberia gerriennei* (Hoffman & Tomescu 2013) (Fig. 2) from
5 Gaspé (Canada), and from a few additional, as yet unnamed, plant types from New Brunswick
6 and Quebec (Canada) (Gerrienne *et al.* 2011; Gensel 2018). Subsequent to these early
7 examples, the fossil record has revealed a remarkable diversity of geologically younger
8 (Middle Devonian and early Carboniferous) plants that produced secondary xylem. This
9 structural feature has been reported in lycopsids, basal euphyllophytes, cladoxyloids,
10 sphenopsids, basal filicopsids such as the zygopterids, stenokoleales, and lignophytes (Figs. 1,
11 2, 6). Thus, two key lessons are that (1) secondary growth evolved early (possibly earlier than
12 410 Ma ago) and that (2) the occurrence of secondary xylem in vascular plants is quite
13 common, even in groups that do not produce wood today, like the lycopsids and sphenopsids.

14
15
16
17
18
19
20
21
22
23
24
25
26
27
28
29
30
31
32
33
34
35
36
37
38
39
40
41
42
43
44
45
46
47
48
49
50
51
52
53
54
55
56
57
58
59
60
61
62
63
64
65
Lycopsids, basal euphyllophytes, cladoxyloids, basal filicopsids, and sphenopsids
are all interpreted as having a unifacial cambium (Cichan & Taylor 1990; Fig.6A-E). This
type of cambium usually produced a small amount of wood (a few millimeters to a few
centimeters) and no secondary phloem, but there are examples of Permian sphenopsids in
which the wood cylinder exceeded 30 cm in radial thickness (Rößler & Noll 2006). The
bifacial cambium, producing both secondary xylem and secondary phloem, is considered the
synapomorphy of the lignophyte clade, which includes the spermatophyte plants and their
extinct progymnosperm sister group (Crane 1985; Doyle & Donoghue 1986; Rothwell &
Serbet 1994; Fig. 6G-H). The oldest evidence for this type of cambium dates to the Middle
Devonian, in the aneurophytalean progymnosperms *Tetraxylopteris*, *Triloboxylon*, and
Proteokalon, all of which possess a well preserved complement of secondary phloem in
addition to secondary xylem (Beck 1957; Scheckler & Banks 1971; Stein & Beck 1983; Fig.
2; Fig. 6G). The Stenokoleales, a Late Devonian-Early Carboniferous group of plants

1 sometimes associated with the lignophytes (Matten 1992; Toledo *et al.* 2018), have some
2 secondary xylem (Beck & Stein 1993; Momont *et al.* 2016) but there is no evidence to date
3
4 for secondary phloem, which would indicate the presence of a bifacial cambium in that group.
5
6 Interestingly, a bifacial cambium is also documented in the Sphenophyllales, an extinct group
7
8 of sphenopsids from the Late Devonian-Triassic (Taylor *et al.* 2009; Fig. 2). However, unlike
9
10 that of the lignophytes, their cambium is usually interpreted as having determinate growth and
11
12 the largest axes of the best known genus, *Sphenophyllum*, are only up to about 1 cm in
13
14 diameter. Late Carboniferous and Permian representatives of *Sphenophyllum* had wood with a
15
16 peculiar system of vertical parenchyma cells located at the corners of tracheids and connected
17
18 to the rays that has no equivalent in other fossil or extant taxa (Cichan & Taylor 1982; Cichan
19
20 1985; Fig. 6F). However, older representatives of the Sphenophyllales seem to have possessed
21
22 a more typical wood anatomy (Terreaux de Felice *et al.* in press).
23
24
25
26
27
28

29 Among extant plants, the bifacial vascular cambium can show important variations in
30
31 functioning, which lead to the development of secondary tissue configurations designated as
32
33 cambial variants (e.g., Angyalossy *et al.* 2012; Pace *et al.* 2018a, b). Evidence for these
34
35 different types of “anomalous secondary growth” has also been documented in the fossil
36
37 record (reviewed by Bodnar & Coturel 2012). For example, some members of the
38
39 *Corytospermales*, an extinct group of spermatophytes from the Triassic (250-200 Ma),
40
41 exhibit both centripetal and centrifugal wood development, as well as possible included
42
43 phloem (Artabe & Brea 2003; Decombeix *et al.* 2014).
44
45
46
47

48 As in the case of the first tracheids, the initial role of wood seems to have been
49
50 hydraulic rather than structural (Gerrienne *et al.* 2011), and the wood of Devonian-
51
52 Carboniferous plants already exhibited hydraulic properties comparable to those of some
53
54 modern taxa (Cichan 1986; Wilson *et al.* 2008; Cascales-Miñana *et al.* 2019, this issue;
55
56 Tanrattana *et al.* 2019, this issue). A role in mechanical support was acquired later and only in
57
58
59
60
61
62
63
64
65

1 certain groups (e.g., Rowe & Speck 2004). Today, most trees are gymnosperms or
2 eudicotyledons in which the wood has a dual function: water conduction and mechanical
3 support. However, several plant types, such as palms (monocotyledons) and tree ferns,
4 demonstrate that secondary xylem is not needed to reach arborescence (i.e., the tree habit).
5 Similarly, there are fossil examples of arborescent plants with no secondary xylem or in
6 which the secondary xylem did not contribute much to the stiffness of the stem (Mosbrugger
7 1990; Meyer-Berthaud & Decombeix 2009). Such is the case of the arborescent lycopsids,
8 like the famous *Lepidodendron* (and related species of Lepidodendrales) of the Carboniferous,
9 in which most of the mechanical support function was filled by a well-developed bark of
10 secondary origin. The small central ring of wood, while very efficient for water conduction
11 (Cichan 1986), played no role in the stem's stiffness (Mosbrugger 1990).

26 One of the major questions that remains regarding the evolution of secondary xylem is
27 whether vascular cambial growth evolved independently in several tracheophyte lineages or
28 only once, at the base of the clade (Tomescu & Groover 2019). The traditional view, based on
29 records of representatives with secondary growth in multiple lineages that could be traced
30 back to the Middle Devonian (Fig. 2), was that there had been multiple independent
31 evolutionary origins of this important developmental and structural feature. This perspective
32 found support in the more-or-less major perceived differences in the anatomy of secondary
33 tissues between the different lineages.

46 These traditional views are being reshaped by evidence coming from two directions.
47 One of these is the realization that some mechanisms regulating vascular cambial growth are
48 shared among major tracheophyte lineages spanning both the lycopsids and the
49 euphyllophytes: lepidodendrales, sphenopsids, progymnosperms, and spermatophytes
50 (Rothwell *et al.* 2008; Sanders *et al.* 2011). The other line of evidence is provided by the
51 discovery of multiple euphyllophyte types that demonstrate secondary xylem production in
52

1 the Early Devonian (Gerrienne *et al.* 2011; Hoffman & Tomescu 2013; Strullu-Derrien *et al.*
2 2014; Gensel 2018). These fossils are pushing the documented occurrence of this feature to
3
4 within a few million-years from the oldest representatives (and, potentially, the origin) of the
5
6 clade. These data prompted Hoffman and Tomescu (2013) to propose that underlying
7
8 mechanisms for secondary growth had become part of the euphyllophyte developmental
9
10 toolkit very early in the evolution of the clade, and to raise the question of whether some of
11
12 these mechanisms may have originated even earlier, in a common ancestor of euphyllophytes
13
14 and lycopsids.
15
16
17
18

19 To provide an empirical framework for addressing such questions, Tomescu and
20
21 Groover (2019) proposed an updated perspective that approaches vascular cambial growth as
22
23 a complex developmental process of modular nature. Their view explains the diverse
24
25 anatomies of secondary growth seen in different lineages (referred to as modes of secondary
26
27 growth) as a mosaic pattern of expression of distinct developmental-regulatory modules
28
29 (responsible for different component processes of secondary growth) among different
30
31 lineages, living and extinct. This view emphasizes patterns of shared processes and
32
33 developmental regulation, and accommodates a hypothesis-testing approach to address
34
35 questions about the evolutionary origins of secondary growth.
36
37
38
39
40
41
42

43 **FURTHER EVOLUTION OF HOMOXYLOUS WOODS IN SEED PLANTS** 44 45 **(SPERMATOPHYTES)** 46 47

48 From its first appearance in the basal euphyllophytes, through the lignophytes and all
49
50 the way to the extant conifers, wood has fulfilled both its functions - conduction and
51
52 mechanical support - with only one type of cell, the tracheid. The structure of wood that has
53
54 only tracheids as conducting cells is referred to as homoxylous (Fig. 7). For example, in most
55
56 conifers the tracheids have a small diameter (<50 μm) and the rays are small - short and
57
58
59
60
61
62
63
64
65

1 uniseriate. Wood of this type is known as pinoxylic (Fig. 7A). In contrast, extant cycads, as
2 well as many Paleozoic pteridosperms have manoxylic wood, characterized by large tracheids
3 with diameters up to 150 μm and large rays (more than 5 cells wide and up to 200 cells tall)
4
5 (Galtier 1992; (Fig. 7B-C).
6
7

8
9 The first spermatophytes that appeared in the Late Devonian are represented by small
10 axes with only a small amount of wood (Serbet & Rothwell 1992), but significant patterns of
11 anatomical disparity can be observed in the wood of homoxyloous spermatophytes as soon as
12 the early Carboniferous. For example, ray size in early Carboniferous spermatophytes ranged
13 from uniseriate rays only one or two cells high in some taxa (such as like *Bilignea*) to
14 multiseriate rays up to a hundred cells high in *Calamopitys* or *Pitus* (Galtier 1992; Galtier &
15 Meyer-Berthaud 2006; Dunn 2006; Fig.7B-C). A combination of very large rays and small
16 tracheids (<50 μm in diameter) occurs in several early Carboniferous taxa, but is extremely
17 rare in the rest of the fossil record prior to the appearance of vesselless angiosperms, toward
18 the end of the Mesozoic (Philippe *et al.* 2010; Boura *et al.* 2019, this issue). Ray tracheids and
19 axial parenchyma are present since at least the Late Devonian-early Carboniferous (Beck &
20 Wight 1988; Galtier & Meyer-Berthaud 2006) (Fig. 7A).
21
22
23
24
25
26
27
28
29
30
31
32
33
34
35
36
37
38

39 Secondary xylem tracheids range widely between 15 and 97 μm in diameter in
40 *Elkinsia*, one of the best known Late Devonian spermatophytes (Serbet & Rothwell 1992). In
41 the Carboniferous and Permian, taxa with tangential tracheid diameters exceeding 100 μm are
42 found among several groups of pteridosperms, including the Calamopityales,
43 Lyginopteridales, and Medullosales, while the Cordaitales, the first conifers, and other
44 spermatophytes such as the Glossopteridales, had smaller tracheids (Cichan 1986; Pigg &
45 Taylor 1993; Vozenin-Serra *et al.* 1991). Tracheid length is less well documented, in part
46 because the longest tracheids exceed the size of thin-section slides that have been prepared
47 from fossil material. Tracheid length reaches at least 1 cm in *Callistophyton*
48
49
50
51
52
53
54
55
56
57
58
59
60
61
62
63
64
65

1
2
3
4
5
6
7
8
9
10
11
12
13
14
15
16
17
18
19
20
21
22
23
24
25
26
27
28
29
30
31
32
33
34
35
36
37
38
39
40
41
42
43
44
45
46
47
48
49
50
51
52
53
54
55
56
57
58
59
60
61
62
63
64
65

(Callistophytales), and several centimeters in *Medullosa*, both of which are late Carboniferous spermatophytes.

Reconstructions of the hydraulic properties of selected fossil plants by Cichan (1986) and Wilson & Knoll (2010) suggest that the wide, long, and densely pitted tracheids of the Carboniferous pteridosperms *Medullosa*, *Callistophyton*, and *Lyginopteris* occupied an area of tracheid morphospace that is not populated by any younger or extant seed plant taxa. Those authors hypothesized that the unusually high conductivity of these tracheids was related to the combination of a non-selfsupporting growth habit, in which tracheids do not play a role in mechanical support, and growth in a warm wetland environment in which there is little risk of embolism (air bubbles in the vascular system) caused by drought or frost. It is interesting to note that such high-conductivity tracheids are to date unknown in the Mesozoic pteridosperms, despite the existence at that time of broadly similar conditions.

The pitting of secondary xylem tracheids in the earliest spermatophytes typically consists of crowded multiseriate oval to oblique pits with oval aperture (Serbet & Rothwell 1992), similar to most representatives of their sister group, the progymnosperms (Beck & Wight 1988; Fig. 7D). A different type of pitting, with uniseriate circular pits possessing circular apertures, is documented in three Late Devonian-early Carboniferous woods belonging to progymnosperms or spermatophytes (Beck & Wight 1988; Prestianni *et al.* 2010; Decombeix *et al.* 2011). Scalariform pits in secondary xylem tracheids are first documented in progymnosperms, such as *Rellimia* and *Protopitys* (Beck & Wight 1988; Fig. 7E), and occur afterwards throughout the history of spermatophytes, for example, in the putative Permian conifer *Xuanweioxylon scalariforme* (He *et al.* 2013), and some cycads, bennettitales, and angiosperms, as well as in some Mesozoic taxa of uncertain affinities, such as *Sahnioxylon* or *Ecpagloxyton* (Philippe *et al.* 2010). Wilson & Knoll (2010) hypothesized that the tracheids with scalariform pitting of the Cretaceous bennettitale *Cycadeoidea* had pit

1
2
3
4
5
6
7
8
9
10
11
12
13
14
15
16
17
18
19
20
21
22
23
24
25
26
27
28
29
30
31
32
33
34
35
36
37
38
39
40
41
42
43
44
45
46
47
48
49
50
51
52
53
54
55
56
57
58
59
60
61
62
63
64
65

area resistances similar to those of extant vesselless angiosperms, such as *Trochodendron*, but the evolutionary history and hydraulic properties of homoxylous woods with scalariform pitting have yet to be properly understood.

One of the major events in the evolution of homoxylous woods was the advent of torus-margo pit membranes with a highly permeable water-porous marginal region, the margo, and a thickened central zone impermeable to water, the torus. Under normal and favorable conditions, water moves from one tracheid to the adjacent one through the margo while the torus is centrally located in the pit chamber allowing water flow. In the case of an embolism, the pit membrane is aspirated against the pit border, such that the torus blocks the pit aperture, preventing the spread of air through the xylem (Bailey 1916). Torus-margo pit membranes ensure, thus, both a high efficiency of water conduction when environmental conditions are hydraulically safe, and a high degree of hydraulic safety when conditions are degraded (Pittermann *et al.* 2005, 2006b; Sperry *et al.* 2006).

Today, torus-margo pit membranes are found in all extant conifer families (Bauch *et al.* 1972; Dute 2015), as well as in other gymnosperm taxa, such as extant *Ginkgo* (Wilson & Knoll 2010) or the gnetales (*Ephedra*, *Gnetum* and *Welwitschia*) (Carlquist 2012), but are absent in the cycads (Bauch *et al.* 1972). Torus-margo pit membranes have also been reported in the fern genus *Botrychium* (Ophioglossidae) (Morrow & Dute 1998). Most angiosperms lack a torus and have homogeneous membranes with smaller size pores randomly distributed. However, in a few angiosperm families (Ericaceae, Oleaceae, Thymeleaceae, Rosaceae, Ulmaceae, Cannabaceae, Schisandraceae), the fine mesh of the typical intervacular pit membrane is associated with a centrally thickened area that resembles a torus (Ohtani & Ishida 1978; Ohtani 1983; Wheeler 1983; Jansen *et al.* 2004; Dute 2015; Nguyen *et al.* 2017).

In 1967, Schmid pointed out that because of the small number of records of torus-margo pit membranes in the fossil record, the evolution of this character has been inferred

1 largely based on data from living plants. Fifty years later this is still the case (Pittermann *et al.*
2 2010; Wilson & Knoll 2010; Wilson 2016) and the timing of the evolution of torus-margo pit
3 membranes remains an enigma. It is possible that this character evolved independently in
4 different lineages, in response to environmental pressures, contributing to the optimization of
5 the balance between safety and efficiency of the secondary xylem (Wilson 2013; Pittermann
6 *et al.* 2010). All Paleozoic conifers have bordered pits with simple pit membranes, i.e., devoid
7 of a torus (Wilson & Knoll 2010). Pre-Cretaceous occurrences of fossil wood with a well-
8 defined torus-margo are very rare and sometimes questionable (Holden 1915), but the
9 presence of torus-margo pit membranes is documented in many coniferous fossil woods from
10 the Cretaceous on (Schmid 1967). Nevertheless, there are recent reports of torus-margo pit
11 membranes from the middle Triassic of Argentina (Bodnar *et al.* 2015) and the basal Jurassic
12 of France (Moreau *et al.* 2019) (Fig. 2).

13
14
15
16
17
18
19
20
21
22
23
24
25
26
27
28
29 In sum, the combination of fossil data and modelling thus shows that homoxylous
30 woods in fossil seed plants displayed a wide range of hydraulic properties resulting from (1) a
31 rapid increase in anatomical diversity in the Carboniferous, and (2) the advent of torus-margo
32 pit membranes possibly as early as the Triassic.
33
34
35
36
37
38
39
40

41 **VESSELS AND EARLY ANGIOSPERM EVOLUTION**

42
43 Vessels are water-conducting units consisting of several non-living cells (vessel
44 elements) that are connected vertically by perforated end walls (perforation plates). Unlike the
45 pits found on the lateral walls of tracheids, perforation plates lack a pit membrane and are
46 complete holes through both primary and secondary walls. The end wall can have one (simple
47 perforation plate) or several perforations (multiple perforation plate). In the latter case, the
48 perforations can be scalariform, reticulate, or foraminate (grouped circular) (Esau 1965;
49 IAWA Committee 1989). Vessel elements are thought to have evolved by dissolution of the
50
51
52
53
54
55
56
57
58
59
60
61
62
63
64
65

1 primary wall in certain areas of the end wall of tracheids. Vessels range from a few
2 millimeters to several meters in length and can exceed 500 μm in diameter, in some
3
4 angiosperm lianas (e.g., Angyalossy *et al.* 2015; Apgaua *et al.* 2017).
5
6

7 The presence of vessels is generally associated with the wood of angiosperms and the
8 evolution of vessels has often been cited as one of the main reasons for the evolutionary
9 success of angiosperms, due to the putative increase in hydraulic conductivity that it entailed
10 (e.g., Bailey 1944; Carlquist 1975; Bond 1989). However, not all angiosperm have vessels
11 and vessels have also been reported in other living and extinct plant groups. Among free-
12 spring vascular plants, vessels have been reported in the primary xylem of lycopsids, such as
13 *Selaginella*, of the sphenopsid *Equisteum*, and of several filicopsids, such as *Pteridium*
14 (Duerden 1934; Bailey 1944; Bierhorst 1958; Carlquist & Schneider 1997; Schneider &
15 Carlquist 2000; Fig. 8A-C). It is generally agreed that the vessels of these plants have evolved
16 independently from those found in spermatophytes.
17
18
19
20
21
22
23
24
25
26
27
28
29
30

31 In the spermatophytes, vessels are present in the angiosperms, the gnetales (Fig. 8E-
32 G) and the extinct Gigantopteridales (Li *et al.* 1996; Li & Taylor 1999; Figs. 2, 8D). The
33 oldest occurrence of vessels in spermatophytes was reported in small stems of late Permian
34 age (ca. 270 Ma) assigned to the Gigantopteridales, a group of unclear affinities from the
35 Permian-Triassic (Li *et al.* 1996; Li & Taylor 1999; Fig. 1; Fig. 8D). Vessels in the wood of
36 *Vasovinea tiannii* are 150-250 μm in diameter, more rarely up to 500 μm , and each vessel
37 element is 4.5-5 mm long. The perforation plates superficially resemble those commonly
38 found in gnetales (foraminate perforation plates, Fig. 8G) but can be distinguished from the
39 latter by a few characters, including the high number of pores (about 14 rows) and the
40 presence of pores that bear remnants of primary wall. One putative vessel observed in the
41 primary xylem shows a scalariform perforation plate more similar to those found in
42 angiosperms. Tian and Li (1992) also reported the presence of “scalariform-reticulate
43
44
45
46
47
48
49
50
51
52
53
54
55
56
57
58
59
60
61
62
63
64
65

1 perforation plates” in some primary xylem tracheary elements of *Guizhouxylon*, another
2 possible gigantopterid from the Late Permian of China. Currently, no other evidence is
3
4 available for vessels in the secondary xylem of spermatophytes prior to the Cretaceous,
5
6 almost 150 million years after the Gigantopteridales (Fig. 2).
7
8

9 Permian and Triassic polyplicate pollen grains reminiscent of gnetalean pollen are the
10 oldest putative evidence for the Gnetales. By the Cretaceous they are well represented in the
11 fossil record by pollen, charcoalfied seeds, and impressions/compressions of reproductive
12 and vegetative structures (Friis *et al.* 2011). There is, however, no convincing record of fossil
13 gnetalean wood and hypotheses about wood evolution in this group (e.g., Carlquist 2012) are
14 based exclusively on extant taxa. Vessel diameters are broadly variable within the group, from
15 around 15 μm in the desert plant *Welwitschia* to $>400 \mu\text{m}$ in some lianescent *Gnetum* species
16 (Fischer & Ewers 1995).
17
18
19
20
21
22
23
24
25
26
27

28 Despite recent claims of Jurassic angiosperms and even older pollen exhibiting
29 angiospermous features (reviewed by Herendeen *et al.* 2016), the oldest widely accepted
30 fossil evidence for angiosperms consists of pollen from the Early Cretaceous (Hauterivian, ca
31 130 Ma; Brenner & Bickoff 1992). Macrofossil evidence in the form of flowers and leaves
32 documents significant diversification of the group throughout the Cretaceous (see Friis *et al.*
33 2011 for a review of the angiosperm fossil record). The oldest unequivocal angiosperm woods
34 with vessels date to the Albian, 110-100 million years ago (Herendeen *et al.* 1999). The
35 vessels in these woods have either simple (e.g., *Paraphyllanthoxylon*) or scalariform (e.g.,
36 *Icacinoxylon*) perforation plates, with some taxa having both types of perforations (Baas &
37 Wheeler 1996; Wheeler & Baas 2019, this issue). Whereas wide vessels ($>200 \mu\text{m}$) occur in
38 some of the earliest angiosperm woods (Albian-Cenomanian), mean tangential vessel
39 diameter is $<100 \mu\text{m}$ in most Cretaceous angiosperm woods (Wheeler & Baas 2019, this
40 issue). In one Late Cretaceous (Maastrichtian) assemblage with ten wood types, maximum
41
42
43
44
45
46
47
48
49
50
51
52
53
54
55
56
57
58
59
60
61
62
63
64
65

1
2 vessel diameters ranged from 80–250 μm (Olmos Formation, Mexico; Martinez-Cabrera &
3 Estrada-Ruiz 2014..

4
5 One long-standing matter of debate has been the single vs. multiple origin of vessels in
6
7 the seed plants. Classical studies from the 1900's and the first cladistic analyses based on
8
9 morphological characters (e.g., Doyle & Donoghue 1986) have interpreted the occurrence of
10
11 vessels in both gnetales and angiosperms as a synapomorphy supporting a close relationship
12
13 between the two groups. On the other hand, detailed anatomical studies have suggested
14
15 independent origins of the vessels in the two groups: the foraminate perforations typical of
16
17 gnetaleans (Fig. 8G) thought to have evolved from tracheids with circular bordered pits on the
18
19 end walls, and the angiosperm perforation plate from tracheids that had scalariform pits on the
20
21 end walls (see Thompson 1918; Bailey 1944, 1953). Other authors (Muhamad & Sattler 1982)
22
23 have suggested that both types of perforation plates occur in the gnetales and, thus, that the
24
25 two types of vessels are homologous. More recently, Fischer and Ewers (1995) and Carlquist
26
27 (1996) have taken the view that the apparent similarities between gnetales and angiosperm
28
29 vessels are the result of convergence. If convergent evolution is, indeed, the explanation for
30
31 the vessels of angiosperms and gnetales, then the secondary xylem vessels of the Permian
32
33 Gigantopteridales, with their distinctive perforation plates, could represent another instance of
34
35 convergence.

36
37 Another key question is that of the putative advantage provided by vessels over
38
39 tracheids and their roles in angiosperm evolution. Vessels have often been considered a key
40
41 element in the success of the angiosperms (e.g., Bailey 1944; Carlquist 1975; Bond 1989).
42
43 However data from both extant and fossil angiosperms suggests a more nuanced situation.
44
45 First, ecophysiological studies comparing the hydraulic capacity in extant angiosperms and
46
47 gymnosperms show that at small lumen diameters, below 60-70 μm , tracheids can be as
48
49 efficient hydraulically as vessels (e.g., Hacke *et al.* 2005; Sperry *et al.* 2006; Brodribb *et al.*
50
51
52
53
54
55
56
57
58
59
60
61
62
63
64
65

1
2
3
4
5
6
7
8
9
10
11
12
13
14
15
16
17
18
19
20
21
22
23
24
25
26
27
28
29
30
31
32
33
34
35
36
37
38
39
40
41
42
43
44
45
46
47
48
49
50
51
52
53
54
55
56
57
58
59
60
61
62
63
64
65

2012). Pitterman *et al.* (2005) showed that the hydraulic efficiency of conifer wood for a given sapwood-area exceeds that of angiosperm wood for the same average conduit diameter, in part thanks to the presence of torus-margo pits (see above). As a result, if vessel diameter is limited (as the result of selection pressures, because narrower vessels are less sensitive to embolism caused by freeze-thaw events or by drought), conifer wood can be more efficient. However, vessels have the advantage of reaching a given conductivity with lower investment in wood conduit area (Tyree *et al.* 1994; Feild & Arens 2007). It is possible that the earliest angiosperm vessels did not provide a significant hydraulic advantage. If they did, it might have also caused a decreased embolism tolerance compared to contemporaneous vesselless seed plants, according to Feild and Wilson (2012). A recent study of rainforest angiosperms from New Caledonia shows that taxa bearing vessels with scalariform plates and vesselless taxa have comparable (low) hydraulic efficiency and safety (Trueba *et al.* in press).

The importance of vessels in angiosperm diversification, at least in its early stages, is also challenged by several lines of evidence suggesting that the earliest angiosperms were vesselless (Baas & Wheeler 1996; Herendeen *et al.* 1999). Recent phylogenetic analyses of extant angiosperms place the vesselless genus *Amborella* (ANA grade, Fig. 1) as sister-group to all other angiosperms. Several other vesselless taxa occur in relatively basal angiosperm groups (e.g., Winteraceae; Fig. 7H), although loss of vessels in some of the latter cannot be excluded (Baas & Wheeler 1996; Herendeen *et al.* 1999; Feild *et al.* 2002; see also Boura *et al.* 2019, this issue). On the other hand, the fossil record provides a counterpoint to the hypothesis of initially vesselless early angiosperms, as the oldest known angiosperm woods have vessels. Nevertheless, the oldest evidence for angiosperms, represented by pollen, predates the oldest angiosperm wood (Hickey & Doyle 1977; Friis *et al.* 2011), indicating that the oldest angiosperm wood has yet to be found. Furthermore, the distinction between vesselless early angiosperm woods and non-angiosperm homoxylous woods in the fossil

1 record can be problematic, especially since potentially useful characters appear to be
2 plesiomorphic or convergent within seed plants (see discussion in Philippe *et al.* 2010).
3
4 Several Mesozoic fossil woods with homoxylous structure, like *Lhassoxylon aptianum*
5
6 (Vozenin-Serra & Pons 1990; Fig. 7F), *Ecpagloxyton mathiesenii* (Philippe *et al.* 2010) or one
7
8 of the specimens described in Neraudeau *et al.* (2017; Fig. 7G), also show unusual features
9
10 (respectively tangential lines of axial parenchyma, scalariform intertracheary radial pits, or
11
12 very abundant axial parenchyma) compared to extant conifer taxa, so that they are sometimes
13
14 described and considered as an early stage of the evolution that led to angiosperm wood types.
15
16
17

18
19 The high hydraulic efficiency of vessels led to a significant increase in wood
20
21 anatomical diversity among angiosperms by allowing the diversification of other cell types
22
23 devoted to distinct functions (Hudson *et al.* 2010). This diversity likely contributed to the
24
25 diversification of angiosperm growth forms. The diversification of angiosperm lianas, for
26
27 example, has been associated to heteroxyly (e.g., Isnard & Feild 2015), although there are also
28
29 many examples of lianas in homoxylous fossil seed plants (Burnham 2015). The fossil record
30
31 suggests that Early Cretaceous (120-110 Ma) angiosperms were small-sized (see Philippe *et*
32
33 *al.* 2008; Coiffard *et al.* 2012), with the first large angiosperm trees found in the Cenomanian
34
35 and Turonian (about 100-90 Ma) (Coiffard *et al.* 2012; Jud *et al.* 2018; Saulnier *et al.* 2018).
36
37 However, this is based mostly on high-latitude localities and more investigations of lower
38
39 latitude floras are needed. Evidence of angiosperm-dominated forests with a significant
40
41 diversity can be found in latest Cretaceous-Paleocene wood assemblages from India (Wheeler
42
43 *et al.* 2017); such assemblages become more common and similar in composition to extant
44
45 communities during the Eocene (Licht *et al.* 2014; 2015; Woodcock *et al.*, 2019, this issue).
46
47 While vessels certainly played a role in the increasing diversity of angiosperms throughout the
48
49 Cretaceous, many questions remain on the evolution of their wood anatomy, especially in the
50
51 context of whole-plant physiology and environmental factors.
52
53
54
55
56
57
58
59
60
61
62
63
64
65

CONCLUSIONS

1
2
3
4
5 Since the first observations of anatomically preserved plants in the XIXth century,
6
7 paleobotany has contributed significant - and sometimes unexpected - data to our
8
9 understanding of the evolution of plant vascular systems. Important among these is the
10
11 realization that many key features of the vascular systems that we observe today appeared
12
13 very early in plant evolution (i.e., in the Paleozoic, >250 million years ago, Fig. 2). This is
14
15 true at various levels, from the organisation of vascular tissues within plant axes (stelar
16
17 architecture, secondary tissues), to the types of conducting cells (tracheids, vessel elements),
18
19 and even the fine elements of cell structure (pitting type, variation in conduit diameter).
20
21 Furthermore, current advances in the methods used to model water flow in the xylem of fossil
22
23 plants suggest that, as a result of these early evolutionary developments, significant
24
25 differences in hydraulic properties existed as early as the Carboniferous. Another important
26
27 lesson from the fossil record is that features related to xylem hydraulic properties might have
28
29 ranked among the main drivers of the diversification of vascular plants in the late Silurian-
30
31 Early Devonian and the evolution of secondary xylem (wood) in the Early Devonian. Finally,
32
33 consideration of the rich data provided by the fossil record in a phylogenetic context raises
34
35 numerous questions about the perceived homoplastic nature vs. potential single origin of
36
37 major features of the vascular system, such as the presence and functional details of a vascular
38
39 cambium or of vessels. Understanding the developmental mechanisms and the evolutionary
40
41 and environmental constraints that led to the anatomies observed today will undoubtedly
42
43 require continued study of the anatomy and physiology of extinct and extant plants. The fossil
44
45 record will play an important role in these studies, as an irreplaceable source of (1)
46
47 chronostratigraphic data as calibration points for the timing of main evolutionary events, and
48
49
50
51
52
53
54
55
56
57
58
59
60
61
62
63
64
65

1 (2) examples of character combinations that do not exist today and can be used to test
2 hypotheses formulated based on extant taxa or can be incorporated in such hypotheses.
3
4
5

6 7 **ACKNOWLEDGEMENTS**

8
9 We thank Jean-Yves Dubuisson for providing the outline used for Figure 1, Jean
10 Galtier for discussions on Paleozoic wood and stele evolution, Kelly Matsunaga for
11 discussions on the palm fossil record, Dennis K. Walker for producing the *Isoetes* sections,
12 and Dario De Franceschi, Sabine Hennequin, Hongqi Li, Brigitte Meyer-Berthaud, and
13 Romain Thomas for providing photos of fossil or extant material. We also thank Pieter Baas
14 and Elisabeth Wheeler for the invitation to submit this paper. AMAP (Botany and
15 Computational Plant Architecture) is a joint research unit which associates CIRAD (UMR51),
16 CNRS (UMR5120), INRA (UMR931), IRD (R123), and Montpellier University (UM);
17 <http://amap.cirad.fr>.
18
19
20
21
22
23
24
25
26
27
28
29
30
31
32
33

34 **REFERENCES**

- 35
36 Angyalossy V, Angeles G, Pace MR, Lima AC, Dias-Leme CL, Lohmann LG & Madero-
37 Vega C. 2012. An overview of the anatomy, development and evolution of the vascular
38 system of lianas. *Plant Ecol. Divers.* 5: 167--182.
39 <https://doi.org/10.1080/17550874.2011.615574>
40
41
42
43
44
45
46 Angyalossy V, Pace MR, Lima AC. 2015. Liana anatomy: a broad perspective on structural
47 evolution of the vascular system. In: SA Schnitzer, FBongers, RJ Burnham & FE Putz
48 (eds.), *The Ecology of Lianas*: 252-287. Wiley-Blackwell, Oxford, UK.
49
50
51 <https://doi.org/10.1002/9781118392409.ch19>
52
53
54
55
56
57
58
59
60
61
62
63
64
65

- 1
2
3
4
5
6
7
8
9
10
11
12
13
14
15
16
17
18
19
20
21
22
23
24
25
26
27
28
29
30
31
32
33
34
35
36
37
38
39
40
41
42
43
44
45
46
47
48
49
50
51
52
53
54
55
56
57
58
59
60
61
62
63
64
65
- Apgaua DM, Tng DY, Cernusak LA, Cheesman AW, Santos RM, Edwards WJ & Laurance SG. 2017. Plant functional groups within a tropical forest exhibit different wood functional anatomy. *Func. Ecol.* 31: 582--591. <https://doi.org/10.1111/1365-2435.12787>
- Arnold CA. 1952. Observations on fossil plants from the Devonian of eastern north America. VI. *Xenocladia medullosina*. *Contr. Mus. Paleontol. Univ. Michigan* 9: 297--309.
- Artabe A & Brea M. 2003. A new approach to *Corystospermales* based on Triassic permineralized stems from Argentina. *Alcheringa* 27: 209--229. <https://doi.org/10.1080/03115510308619353>
- Baas P & Wheeler EA . 1996. Parallelism and reversibility in xylem evolution – a review. *IAWA J.* 17: 351--36. <https://doi.org/10.1163/22941932-90000633>
- Bailey, IW. 1916. The structure of the bordered pits of conifers and its bearing upon the tension hypothesis of the ascent of sap. *Botanical Gazette* 62: 133–142.
- Bailey IW. 1944. The development of vessels in angiosperms and its significance in morphological research. *Am. J. Bot.* 31:421--428. <https://doi.org/10.1002/j.1537-2197.1944.tb08053.x>
- Bailey IW. 1953. Evolution of the tracheary tissue of land plants. *Am. J. Bot.* 40: 4--8. <https://doi.org/10.2307/2438485>.
- Bauch J, Liese W & Schultze R. 1972. The morphological variability of the bordered pit membranes in gymnosperms. *Wood. Sci. Technol.* 6: 165--184. <https://doi.org/10.1007/BF00351575>
- Beck CB. 1957. *Tetraxylopteris schmidtii* gen. et. sp. nov., a probable pteridosperm precursor from the Devonian of New York. *Am. J. Bot.* 44:350--367. <https://doi.org/10.2307/2438387>
- Beck CB. 1979. The primary vascular system of *Callixylon*. *Rev. Palaeobot. Palynol.* 28: 103-115. [https://doi.org/10.1016/0034-6667\(79\)90003-4](https://doi.org/10.1016/0034-6667(79)90003-4)

- 1 Beck CB. 2005. An introduction to plant structure and development. Cambridge University
2 Press, NY. <https://doi.org/10.1017/CBO9781139165365>
3
- 4 Beck CB & Stein WE. 1993. *Crossia virginiana* gen. et sp. nov., a new member of the
5 Stenokoleales from the Middle Devonian of southwestern Virginia. *Palaeontographica*
6 229B: 115--134.
7
- 8 Beck CB & Wight DC. 1988. Progymnosperms. In: CB Beck (ed), Origin and evolution of
9 gymnosperms: 1--84. Columbia University Press, New York.
10
- 11 Beck CB, Schmid R & Rothwell GW. 1982. Stellar morphology and the primary vascular
12 system of seed plants. *Bot. Rev.* 48: 691--815. <https://doi.org/10.1007/BF02860874>
13
- 14 Berry EW. 1916. A petrified palm from the Cretaceous of New Jersey. *Am. J. Sci.* 41: 193--
15 197. <https://doi.org/10.2475/ajs.s4-41.242.193>
16
- 17 Bertrand P. 1935. Contribution a l'étude des Cladoxylalées de Saalfeld. *Palaeontographica B*
18 80: 101--170.
19
- 20 Bickner MA & Tomescu AMF. 2019. Structurally complex, yet anatomically plesiomorphic:
21 permineralized plants from the Emsian of Gaspé (Quebec, Canada) expand the diversity
22 of Early Devonian euphyllophytes. *IAWA J.* <https://doi.org/10.1163/22941932-40190234>
23
- 24 Bierhorst D. 1958. Vessels in *Equisetum*. *Am. J. Bot.* 45: 534--537.
25
26 <https://doi.org/10.1002/j.1537-2197.1958.tb13162.x>
27
- 28 Bodnar J & Coturel EP. 2012. El origen y diversificación del crecimiento cambial atípico en
29 plantas fósiles: procesos del desarrollo involucrado. *Bol. Soc. Argent. Bot.* 47: 33--70.
30
- 31 Bodnar J, Ruiz D P, Artabe AEE, Morel EM & Ganuza DG. 2015. Voltziales y Pinales (=
32 Coniferales) de la Formación Cortaderita (Triásico Medio), Argentina, y su implicancia
33 en la reconstrucción de las coníferas triásicas. *Rev. Bras. Paleontol.* 18: 141--160.
34
35 <http://dx.doi.org/10.4072/rbp.2015.1.10>
36
37
38
39
40
41
42
43
44
45
46
47
48
49
50
51
52
53
54
55
56
57
58
59
60
61
62
63
64
65

- 1
2
3
4
5
6
7
8
9
10
11
12
13
14
15
16
17
18
19
20
21
22
23
24
25
26
27
28
29
30
31
32
33
34
35
36
37
38
39
40
41
42
43
44
45
46
47
48
49
50
51
52
53
54
55
56
57
58
59
60
61
62
63
64
65
- Bonacorsi NK & Leslie AB. In press. Sporangium position, branching architecture, and the evolution of reproductive morphology in Devonian plants. *Int. J. Plant Sci.*
- Bond WJ. 1989. The tortoise and the hare: ecology of angiosperm dominance and gymnosperm persistence. *Biol. J. Linn. Soc.* 36:227--249. <https://doi.org/10.1111/j.1095-8312.1989.tb00492.x>
- Boura A, Saulnier G, De Franceschi D, Gomez B, Daviero-Gomez V, Pons D, Garcia G, Robin N, Boiteau J-M & Valentin X. 2019. An early record of a vesselless angiosperm from the middle Cenomanian of the Envigne valley (Vienne, Western France). *IAWA J.* <https://doi.org/10.1163/22941932-40190238>
- Bower FO. 1908. *The origin of a land flora.* Macmillan & Co., Ltd., London.
- Bower FO. 1926. *The Ferns.* Vol. II. Univ. Press, Cambridge.
- Boyce CK. 2005. The evolutionary history of roots and leaves. In: NM Holbrook & MA Zwieniecki (eds.). *Vascular transport in plants: 479--499.* Elsevier, Amsterdam. <https://doi.org/10.1016/B978-012088457-5/50025-3>
- Boyce CK, Cody GD, Fogel ML, Hazen RM, Alexander CMOD & Knoll AH. 2003. Chemical evidence for cell wall lignification and the evolution of tracheids in early Devonian plants. *Int. J. Plant Sci.* 164: 691--702. <https://doi.org/10.1086/377113>
- Brenner GJ & Bickoff IS. 1992. Palynology and age of the Lower Cretaceous basal Kurnub Group from the coastal plain to the northern Negev of Israel. *Palynology* 16(1): 137--185. <https://doi.org/10.1080/01916122.1992.9989411>
- Brodribb TJ, Pittermann J & Coomes DA. 2012. Elegance versus speed: Examining the competition between conifer and angiosperm trees. *Int. J. Plant Sci.* 173: 673--694. <https://doi.org/10.1086/666005>

- 1
2
3
4
5
6
7
8
9
10
11
12
13
14
15
16
17
18
19
20
21
22
23
24
25
26
27
28
29
30
31
32
33
34
35
36
37
38
39
40
41
42
43
44
45
46
47
48
49
50
51
52
53
54
55
56
57
58
59
60
61
62
63
64
65
- Burnham R.J. 2015. Climbing plants in the fossil record: Paleozoic to Present. In: SA
Schnitzer, F Bongers, RJ Burnham & FE Putz (eds.) *The Ecology of Lianas*: 205--220.
Wiley-Blackwell, Oxford, UK. <https://doi.org/10.1002/9781118392409.ch16>
- Carlquist S. 1975. *Ecological strategies of xylem evolution*. Univ. Calif. Press, Berkeley, Los
Angeles & London.
- Carlquist S. 1996. Wood, bark, and stem anatomy of gnetales: a summary. *Int. J. Plant Sci.*,
157:S58--S76. <https://doi.org/10.1086/297404>
- Carlquist S. 2012. Wood anatomy of Gnetales in a functional, ecological, and evolutionary
context. *Aliso* 30: 33--47. <https://doi.org/10.5642/aliso.20123001.05>.
- Carlquist S & Schneider EL. 1997. SEM studies on vessels in ferns. 2. *Pteridium*. *Am. J. Bot.*
84: 581--585. <https://doi.org/10.2307/2445893>
- Cascales-Miñana B, Gerrienne P, Sirjacq B & Steemans P. 2019. On the hydraulic
conductance of three woody Devonian plants. *IAWA J.*
<https://doi.org/10.1163/22941932-40190232>
- Cascales-Miñana B, Steemans P, Servais T, Lepot K & Gerrienne P. 2019. An alternative
model for the earliest evolution of vascular plants. *Lethaia*.
<https://doi.org/10.1111/let.12323>
- Choat B, Cobb AR & Jansen S. 2008. Structure and function of bordered pits: new
discoveries and impacts on whole-plant hydraulic function. *New Phytol.* 177: 608--626.
<https://doi.org/10.1111/j.1469-8137.2007.02317.x>
- Chomicki G, Coiro M & Renner SS. 2017. Evolution and ecology of plant architecture:
integrating insights from the fossil record, extant morphology, developmental genetics
and phylogenies. *Ann. Bot.* 120: 855--891. <https://doi.org/10.1093/aob/mcx113>

- 1
2 Cichan MA. 1985. Vascular cambium and wood development in Carboniferous plants. II.
3 *Sphenophyllum plurifoliatum* Williamson and Scott (Sphenophyllales). Bot. Gaz. 146:
4 395--403. <https://doi.org/10.1086/337539>
5
6
7 Cichan MA 1986. Conductance in the wood of selected Carboniferous plants. Paleobiology
8
9 12: 302--310. <https://doi.org/10.1017/S0094837300013804>
10
11
12 Cichan MA & Taylor TN. 1982. Vascular cambium development in *Sphenophyllum*: a
13
14 Carboniferous arthropyte. IAWA Bull. 3: 155--160. [https://doi.org/10.1163/22941932-](https://doi.org/10.1163/22941932-90000830)
15
16
17
18
19 Cichan MA & Taylor TN. 1990. Evolution of cambium in geologic time - a reappraisal. In:
20
21 M Iqbal (ed.), The vascular cambium: 213--228. Research Studies Press / Wiley,
22
23 Taunton, England / New York.
24
25
26 Cichan MA, Taylor TN & Smoot EL. 1981. The application of scanning electron microscopy
27
28 in the characterization of Carboniferous lycopod wood. Scanning Electron Microscopy 3:
29
30 197--201.
31
32
33
34 Coiffard C, Gomez B, Daviero-Gomez V & Dilcher DL. 2012. Rise to dominance of
35
36 angiosperm pioneers in European Cretaceous environments. Proc. Nat. Acad. Sci. 109:
37
38 20955--20959. <https://doi.org/10.1073/pnas.1218633110>
39
40
41 Crane PR. 1985. Phylogenetic analysis of seed plants and the origin of angiosperms. Ann.
42
43 Mo. Bot. Gard. 72: 716--793. <https://doi.org/10.2307/2399221>
44
45
46 Crepet WL, & Niklas KJ. 2019 (in press). The evolution of early vascular plant complexity.
47
48 Int. J. Plant Sci.
49
50
51 Crié L. 1892. Recherches sur les Palmiers silicifiés des terrains crétacés de l'Anjou. Bull. Soc.
52
53 Etudes Scient. Angers. 21: 99.
54
55
56 Cruiziat P, Cochard H & Améglio T. 2002. Hydraulic architecture of trees: main concepts and
57
58 results Ann. For. Sci. 59, 723--752. <https://doi.org/10.1051/forest:2002060>
59
60
61
62
63
64
65

- 1
2
3
4
5
6
7
8
9
10
11
12
13
14
15
16
17
18
19
20
21
22
23
24
25
26
27
28
29
30
31
32
33
34
35
36
37
38
39
40
41
42
43
44
45
46
47
48
49
50
51
52
53
54
55
56
57
58
59
60
61
62
63
64
65
- Decombeix A-L, Bomfleur B, Taylor EL & Taylor TN. 2014. New insights into the anatomy, development, and affinities of corystosperm trees from the Triassic of Antarctica. *Rev. Palaeobot. Palynol.* 203: 22--34. <https://doi.org/10.1016/j.revpalbo.2014.01.002>
- Decombeix A-L, Meyer-Berthaud B, Galtier J, Talent J & Mawson R. 2011. Diversity of arborescent lignophytes in the Tournaisian vegetation of Queensland (Australia): paleoecological and paleogeographical significance. *Palaeog. Palaeoclimatol. Palaeoecol.* 301: 39--55. <https://doi.org/10.1016/j.palaeo.2010.12.017>
- Delevoryas T. 1964. Ontogenetic studies of fossil plants. *Phytomorphology* 14: 299--314.
- Doyle JA & Donoghue MJ. 1986. Seed plant phylogeny and the origin of angiosperms: an experimental cladistic approach. *Bot. Rev.* 52: 331--429. <https://doi.org/10.1007/BF02861082>
- Duerden H. 1934. On the occurrence of vessels in *Selaginella*. *Ann. Bot.* 48: 459--465. <https://doi.org/10.1093/oxfordjournals.aob.a090458>
- Dunn MT. 2006. A review of permineralized seed fern stems of the Upper Paleozoic. *J. Torrey Bot. Soc.* 133:20--32. [https://doi.org/10.3159/1095-5674\(2006\)133\[20:AROPSF\]2.0.CO;2](https://doi.org/10.3159/1095-5674(2006)133[20:AROPSF]2.0.CO;2)
- Dute RR. 2015. Development, structure, and function of torus–margo pits in conifers, ginkgo and dicots. In: Hacke U (ed.), *Functional and ecological xylem anatomy*: 77--102. Springer, Cham. https://doi.org/10.1007/978-3-319-15783-2_3
- Edwards 2003. Xylem in early tracheophytes. *Plant Cell Environ.* 26: 57--72. <https://doi.org/10.1046/j.1365-3040.2003.00878.x>
- Edwards D & Davies ECW. 1976. Oldest recorded *in situ* tracheids. *Nature* 263: 494--495. <https://doi.org/10.1038/263494a0>
- Edwards D, Davies ECW & Axe L. 1992. A vascular conducting strand in the early land plant *Cooksonia*. *Nature* 357: 683-685. <https://doi.org/10.1038/357683a0>

- 1
2 Edwards D, Li C.-S & Raven JA. 2006. Tracheids in an early vascular plant: a tale of two
3
4 branches. Bot. J. Linn. Soc. 150: 115--130. <https://doi.org/10.1111/j.1095->
5
6 [8339.2006.00450.x](https://doi.org/10.1111/j.1095-8339.2006.00450.x)
7
8
9 Edwards D, Kenrick P & Dolan L. 2017. History and contemporary significance of the
10
11 Rhynie cherts - our earliest preserved terrestrial ecosystem. Phil. Trans. Roy. Soc. B 373:
12
13 20160489. doi: [10.1098/rstb.2016.0489](https://doi.org/10.1098/rstb.2016.0489)
14
15
16 Eggert DA. 1961. The ontogeny of Carboniferous arborescent Lycopsidea. Palaeontographica
17
18 B 108: 43--92.
19
20
21 Esau K. 1965. Plant anatomy, 2nd ed. Wiley & Sons, New York-London-Sydney.
22
23
24 Feild TS & Arens NC. 2007. The ecophysiology of early angiosperms. Plant Cell Environ. 30:
25
26 291--309. <https://doi.org/10.1111/j.1365-3040.2006.01625.x>
27
28
29 Feild TS & Wilson JP. 2012. Evolutionary voyage of angiosperm vessel structure-function
30
31 and its significance for early angiosperm success. Int. J. Plant Sci. 173: 596--609.
32
33
34 <https://doi.org/10.1086/666099>
35
36 Feild TS, Brodribb T & Holbrook NM. 2002. Hardly a relict: freezing and the evolution of
37
38 vesselless wood in Winteraceae. Evolution 56: 464--478. <https://doi.org/10.1111/j.0014->
39
40 [3820.2002.tb01359.x](https://doi.org/10.1111/j.0014-3820.2002.tb01359.x)
41
42
43 Fisher JB & Ewers FW. 1995. Vessel dimensions in liana and tree species of *Gnetum*
44
45 (Gnetales). Am. J. Bot. 82: 1350--1357. <https://doi.org/10.2307/2445861>
46
47
48 Friedman WE & Cook ME. 2000. The origin and early evolution of tracheids in vascular
49
50 plants: integration of palaeobotanical and neobotanical data. Phil. Trans. R. Soc. Lond. B
51
52 355: 857--868. doi: [10.1098/rstb.2000.0620](https://doi.org/10.1098/rstb.2000.0620)
53
54
55
56
57
58
59
60
61
62
63
64
65

1 Friis EM, Crane PR & Pedersen KR. 2011. Early Flowers and Angiosperm Evolution.

2 Cambridge University Press, Cambridge, UK.

3
4 <https://doi.org/10.1017/CBO9780511980206>

5
6
7 Galtier J. 1992. On the earliest arborescent gymnosperms. *Cour. Forsch.-Inst. Senckenberg*
8
9 147: 119--125.

10
11 Galtier J. 2010. The origins and early evolution of the megaphyllous leaf. *Int. J. Plant Sci.*
12
13 171: 641--661. <https://doi.org/10.1086/653130>

14
15
16 Galtier J & Meyer-Berthaud B. 2006. The diversification of early arborescent seed ferns. *J.*
17
18 *Torrey Bot. Soc.* 133: 7--19. <https://www.jstor.org/stable/20063819>

19
20
21 Gensel PG. 2018. Early Devonian woody plants and implications for the early evolution of
22
23 vascular cambia. In: M Krings, NR Cúneo, CJ Harper & GW Rothwell (eds.),
24
25 *Transformative paleobotany. Papers to commemorate the life and legacy of Thomas N.*
26
27 *Taylor*: 21-33. Academic Press / Elsevier. [https://doi.org/10.1016/B978-0-12-813012-](https://doi.org/10.1016/B978-0-12-813012-4.00002-4)
28
29
30 [4.00002-4](https://doi.org/10.1016/B978-0-12-813012-4.00002-4)

31
32
33 Gensel PG, Kotyk ME & Basinger JF. 2001. Morphology of above- and below-ground
34
35 structures in the Early Devonian (Pragian-Emasian) plants. In: PG Gensel & D Edwards
36
37 (eds.). *Plants Invade the Land: Evolutionary and Environmental Perspectives*: 83–102.
38
39
40
41 Columbia University Press, New York.

42
43 Gerrienne P & Gensel PG. 2016. New data about anatomy, branching, and inferred growth
44
45 patterns in the Early Devonian plant *Armoricaphyton chateaupannense*, Montjean-sur-
46
47 Loire, France. *Rev. Palaeobot. Palynol.* 224: 38--53.
48
49
50
51 <https://doi.org/10.1016/j.revpalbo.2015.07.014>

52
53 Gerrienne P, Gensel PG, Strullu-Derrien C, Lardeux H, Steemans P & Prestianni C. 2011. A
54
55 simple type of wood in two Early Devonian plants. *Nature* 333: 837.
56
57
58 <https://doi.org/10.1126/science.1208882>

- 1 Gifford EM & Foster AS. 1989. Morphology and evolution of vascular plants, 3rd ed. WH
2 Freeman & Co., New York.
3
4 Göppert HR and Stenzel G. 1882. Die Medulloseae. Eine neue Gruppe der fossilen Cycadeen.
5
6 Palaeontographica 28: 111--128.
7
8
9 Gonez G & Gerrienne P. 2010. A new definition and a lectotypification of the genus
10
11 *Cooksonia* Lang 1937. Int. J. Plant Sci.171: 199--215. <https://doi.org/10.1086/648988>
12
13
14
15
16 Gray J & Boucot AJ. 1977. Early vascular plants: proof and conjecture. Lethaia 10: 145--174.
17
18
19 <https://doi.org/10.1111/j.1502-3931.1977.tb00604.x>
20
21 Hacke UG, Sperry JS, Pockman WT, Davis SD & McCulloh KA. 2001. Trends in wood
22
23 density and structure are linked to prevention of xylem implosion by negative pressure.
24
25
26 Oecologia 126: 457--461. <https://doi.org/10.1007/s004420100628>
27
28 Hacke UG, Sperry JS & Pittermann J. 2005. Efficiency versus safety tradeoffs for water
29
30 conduction in angiosperm vessels versus gymnosperm tracheids. In: NM Holbrook &
31
32 MA Zwieniecki (eds.), Vascular transport in plants: 333-353. Elsevier, Amsterdam.
33
34
35
36 <https://doi.org/10.1016/B978-012088457-5/50018-6>
37
38 He J, Wang S-J, Hilton J & Shao L. 2013. *Xuanweioxylon scalariforme* gen. et sp. nov.:
39
40
41 Novel Permian coniferophyte stems with scalariform bordered pitting on secondary
42
43 xylem tracheids. Rev. Palaeobot. Palynol. 197: 152-165.
44
45
46 <https://doi.org/10.1016/j.revpalbo.2013.05.010>
47
48 Herendeen PS, Wheeler EA & Baas P. 1999. Angiosperm wood evolution and the potential
49
50 contribution of paleontological data. Bot. Rev. 65: 278--300.
51
52
53 <https://doi.org/10.1007/BF02857632>
54
55 Herendeen PS, Friis EM, Pedersen KR & Crane PR. 2017. Palaeobotanical redux: revisiting
56
57 the age of the angiosperms. Nature Plants 3: 17015. doi: 10.1038/nplants.2017.15
58
59
60
61
62
63
64
65

- 1
2
3
4
5
6
7
8
9
10
11
12
13
14
15
16
17
18
19
20
21
22
23
24
25
26
27
28
29
30
31
32
33
34
35
36
37
38
39
40
41
42
43
44
45
46
47
48
49
50
51
52
53
54
55
56
57
58
59
60
61
62
63
64
65
- Hetherington AJ & Dolan L. 2018. Rhynie chert fossils demonstrate the independent origin and gradual evolution of lycophyte roots. *Curr. Opin. Plant Biol.* 47: 119--126.
<https://doi.org/10.1016/j.pbi.2018.12.001>
- Hickey LJ & Doyle JA. 1977. Early Cretaceous fossil evidence for angiosperm evolution. *Bot. Rev.* 43: 3--104. <https://doi.org/10.1007/BF02860849>
- Hoffman LA & Tomescu AMF. 2013. An early origin of secondary growth: *Franhueberia gerriennei* gen. et sp. nov. from the Lower Devonian of Gaspé (Quebec, Canada). *Am. J. Bot.* 100: 754--763. <https://doi.org/10.3732/ajb.1300024>
- Holden R. 1915. A Jurassic wood from Scotland. *New Phytol.* 14: 205--209.
<https://doi.org/10.1111/j.1469-8137.1915.tb07187.x>
- Hudson PJ, Razanatsoa J & Feild TS. 2010. Early vessel evolution and the diversification of wood function: Insights from Malagasy Canellales. *Am. J. Bot.* 97: 80--93.
<https://doi.org/10.3732/ajb.0900130>
- Isnard S & Feild TS. 2015. The evolution of angiosperm lianesence : a perspective from xylem structure-function. In: SA Schnitzer, FBongers, RJ Burnham & FE Putz (eds.), *The Ecology of Lianas*: 221-238. Wiley-Blackwell, Oxford, UK.
<https://doi.org/10.1002/9781118392409.ch17>
- Jansen S, Choat B, Vinckier S, Lens F, Schols P & Smets E. 2004. Intervascular pit membranes with a torus in the wood of *Ulmus* (Ulmaceae) and related genera. *New Phytol.* 163: 51--59. <https://doi.org/10.1111/j.1469-8137.2004.01097.x>
- Jud NA, D'Emic MD, Williams SA, Mathews JC., Tremaine KM & Bhattacharya, J. 2018. A new fossil assemblage shows that large angiosperm trees grew in North America by the Turonian (Late Cretaceous). *Science Advances* 4: eaar8568.
<https://doi.org/10.1126/sciadv.aar8568>

1 Kenrick P & Crane PR. 1991: Water-conducting cells in early fossil land plants: implications
2 for the Early Evolution of Tracheophytes. Bot. Gaz.152: 335--336.

3
4 <https://doi.org/10.1086/337897>
5

6
7 Kenrick P & Crane PR. 1997. The origin and early diversification of land plants. Smithsonian
8 Institution Press, Washington, D.C.
9

10
11 Kenrick P, Wellman CH, Schneider H & Edgecombe GD. 2012. A timeline for
12 terrestrialization: consequences for the carbon cycle in the Palaeozoic. Phil. Trans. R.
13 Soc. B 367: 519--536. <https://doi.org/10.1098/rstb.2011.0271>
14
15
16

17
18
19 Kotyk ME, Basinger JF, Gensel PG & de Freitas TA. 2002. Morphologically complex plant
20 macrofossils from the Late Silurian of Arctic Canada. Am. J. Bot. 89: 1004--1013.
21
22 <https://doi.org/10.3732/ajb.89.6.1004>
23
24

25
26 Lang WH. 1937. On the plant-remains from the Downtonian of England and Wales. Phil.
27 Trans. R. Soc. B227: 245--291. <https://doi.org/10.1098/rstb.1937.0004>
28
29

30
31 Langdale JA & Harrison CJ. 2008. Developmental transitions during the evolution of plant
32 form. In: A Minelli & G Fusco (eds.), Evolving pathways. Key themes in evolutionary
33 developmental biology: 299-315. Cambridge University Press, Cambridge, UK.
34
35
36

37
38 Li H & Taylor DW. 1999. Vessel-bearing stems of *Asovinea tianii* gen. et sp. nov.
39 (Gigantopteridales) from the Upper Permian of Guizhou Province, China. Am. J. Bot. 86:
40
41 1563--75. <https://doi.org/10.2307/2656794>
42
43
44

45
46 Li H, Taylor EL & Taylor TN. 1996. Permian vessel elements. Science 271: 188--189.
47
48 <https://doi.org/10.1126/science.271.5246.188>
49

50
51 Libertin M, Kvacek J, Bek J, Zarsky V & Storch P. 2018. Sporophytes of polysporangiate
52 land plants from the early Sil-urian period may have been photosynthetically
53
54 autonomous. Nature Plants 4: 269271. <https://doi.org/10.1038/s41477-018-0140-y>
55
56
57

- 1
2 Licht A, Boura A, De Franceschi D, Ducrocq S, Soe AN & Jaeger JJ. 2014. Fossil woods
3 from the late middle Eocene Pondaung Formation, Myanmar. Rev. Paleobot. Palynol.
4 202: 29--46. <https://doi.org/10.1016/j.revpalbo.2013.12.002>
5
6
7 Licht A, Boura A, De Franceschi D, Utescher T, Sein C & Jaeger JJ. 2015. Late middle
8 Eocene fossil wood of Myanmar: Implications for the landscape and the climate of the
9 Eocene Bengal Bay. Rev. Paleobot. Palynol. 216: 44--54.
10
11 <https://doi.org/10.1016/j.revpalbo.2015.01.010>
12
13
14
15
16
17 Martin F. 1971. Palynofacies et microfacies du Silurien inférieur à Deerlijk. Bulletin de
18 l'Institut Royal des Sciences Naturelles de Belgique, Biologie 47: 1--26.
19
20
21
22 Martínez-Cabrera HI & Estrada-Ruiz E. 2014. Wood anatomy reveals high theoretical
23 hydraulic conductivity and low resistance to vessel implosion in a Cretaceous fossil forest
24 from Northern Mexico. PLoS ONE 9: e108866.
25
26 <https://doi.org/10.1371/journal.pone.0108866>
27
28
29
30
31
32 Matten LC. 1992. Studies on Devonian plants from New York State: *Stenokoleos holmesii* n.
33 sp. from the Cairo Flora (Givetian) with an alternative model for lycopodioid seed fern
34 evolution. Cour. Forsch. Inst. Senckenberg 147: 75--85.
35
36
37
38
39 McCulloh KA, Sperry JS & Adler FR. 2003. Water transport in plants obeys Murray's law.
40 Nature 421: 939--942. <https://doi.org/10.1038/nature01444>
41
42
43
44 Meyer-Berthaud B & Decombeix A-L. 2009. Evolution of first trees: the Devonian strategies.
45 C. R. Palevol 8: 155--165. <https://doi.org/10.1016/j.crpv.2008.08.002>
46
47
48
49 Momont N, Decombeix A-L, Gerrienne P & Prestianni C. 2016. New information, including
50 anatomy of the secondary xylem, on the genus *Brabantophyton* (Stenokoleales) from
51 Ronquières (Middle Devonian, Belgium). Rev. Palaeobot. Palynol. 234: 44--60.
52
53 <https://doi.org/10.1016/j.revpalbo.2016.08.009>
54
55
56
57
58
59
60
61
62
63
64
65

- 1
2
3
4
5
6
7
8
9
10
11
12
13
14
15
16
17
18
19
20
21
22
23
24
25
26
27
28
29
30
31
32
33
34
35
36
37
38
39
40
41
42
43
44
45
46
47
48
49
50
51
52
53
54
55
56
57
58
59
60
61
62
63
64
65
- Moreau JD, Philippe M & Thévenard F. 2019. Flore du Jurassique basal de la ville de Mende (Lozère): synthèse des gisements historiques, nouvelles données sédimentologiques, paléontologiques et paléoenvironnementales. C. R. Palevol 18: 159--177.
<https://doi.org/10.1016/j.crvp.2018.07.002>
- Morris JL, Puttick MN, Clark JW, Edwards D, Kernick P, Pressel S, Wellman CH, Yang Z, Scheneider H & Donoghue PCJ. 2018. The timescale of early land plant evolution. Proc. Nat. Acad. Sci. 115: E2274--E2283. <https://doi.org/10.1073/pnas.1719588115>
- Morrow AC & Dute RR. 1998. Development and structure of pit membranes in the rhizome of the woody fern *Botrychium dissectum*. IAWA J. 19:429--441.
<https://doi.org/10.1163/22941932-90000664>
- Mosbrugger V. 1990. The tree habit in land plants. Lecture Notes in Earth Sciences 28 Springer-Verlag, Berlin. <https://doi.org/10.1007/BFb0011397>
- Muhammad AF & Sattler R. 1982. Vessel structure of *Gnetum* and the origin of Angiosperms. Am. J. Bot. 69: 1004--1021. <https://doi.org/10.1002/j.1537-2197.1982.tb13345.x>
- Namboodiri KK & Beck CB. 1968. A comparative study of the primary vascular system of conifers. III. Stelar evolution in gymnosperms. Am. J. Bot. 55: 464--472.
<https://doi.org/10.2307/2440576>
- Néraudeau D, Perrichot V, Batten DJ, Boura A, Girard V, Jeanneau L & Thomas R. 2017. Upper Cretaceous amber from Vendée, north-western France: age dating and geological, chemical, and palaeontological characteristics. Cretac. Res. 70: 77--95.
<https://doi.org/10.1016/j.cretres.2016.10.001>
- Nguyen C, Andrews A, Baas P, Bond JE, Auad M & Dute R. 2017. Pit membranes and their evolution in the Oleinae of the Oleaceae. IAWA J. 38: 201--219.
<https://doi.org/10.1163/22941932-20170168>

- 1
2 Niklas KJ. 1994. Plant allometry: the scaling of form and process. University of Chicago
3 Press, Chicago.
- 4
5 Ohtani J. 1983. SEM investigation on the micromorphology of vessel wall sculptures.
6
7 Research Bulletin of the College Experiment Forests, College of Agriculture, Hokkaido
8
9 University 40: 323--386.
- 10
11
12 Ohtani J & Ishida S. 1978. Pit membrane with torus in dicotyledonous woods [angiosperm
13
14 tree]. Journal of the Japan Wood Research Society 24: 673--675.
- 15
16
17 Pace MR, Acevedo-Rodriguez P, Amorim AM & Angyalossy V. 2018a. Ontogeny, structure
18
19 and occurrence of interxylary cambia in Malpighiaceae. Flora 241: 46--60.
20
21 <https://doi.org/10.1016/j.flora.2018.02.004>
- 22
23
24 Pace MR, Angyalossy V, Acevedo-Rodriguez P, Wen J. 2018b. Structure and ontogeny of
25
26 successive cambia in *Tetrastigma* (Vitaceae), the host plants of Rafflesiaceae. J. Syst.
27
28 Evol. 56: 394--400. <https://doi.org/10.1111/jse.12303>
- 29
30
31 Paolillo DJ, Jr. 1963. The developmental anatomy of *Isoetes*. Illinois Biological Monographs
32
33 31. University of Illinois Press, Urbana.
- 34
35
36 Pfeiler KC & Tomescu AMF. 2018. An Early Devonian permineralized rhyniopsid from the
37
38 Battery Point Formation of Gaspé (Canada). Bot. J. Linn. Soc. 187: 292--302.
39
40 <https://doi.org/10.1093/botlinnean/boy011>
- 41
42
43 Philippe M, Gomez B, Girard V, Coiffard C, Daviero-Gomez V, Thevenard F, Billon-Bruyat
44
45 J-P, Guiomard M, Latil J-L, Le Loeuff J, Néraudeau D, Olivero D & Schlögl J. 2008.
46
47 Woody or not woody? Evidence for early angiosperm habit from the Early Cretaceous
48
49 fossil wood record of Europe. Paleoworld 17: 142--152.
50
51 <https://doi.org/10.1016/j.palwor.2008.06.001>
- 52
53
54
55
56
57
58
59
60
61
62
63
64
65

- 1
2
3
4
5
6
7
8
9
10
11
12
13
14
15
16
17
18
19
20
21
22
23
24
25
26
27
28
29
30
31
32
33
34
35
36
37
38
39
40
41
42
43
44
45
46
47
48
49
50
51
52
53
54
55
56
57
58
59
60
61
62
63
64
65
- Philippe M, Cuny G & Bashforth A. 2010. *Ecpagloxylon mathiesenii* gen. nov. et sp. nov., a Jurassic wood from Greenland with several primitive angiosperm features. *Plant Syst. Evol.* 287: 153--165. <https://doi.org/10.1007/s00606-010-0308-z>
- Phillips TL. 1974. Evolution of vegetative morphology in coenopterid ferns. *Ann. Mo. Bot. Gard.* 61: 427--461. <https://doi.org/10.2307/2395067>
- Pigg KB & Taylor TN. 1993. Anatomically preserved *Glossopteris* stems with attached leaves from the Central Transantarctic Mountains, Antarctica. *Am. J. Bot.* 80: 500--516. <https://doi.org/10.1002/j.1537-2197.1993.tb13833.x>
- Pittermann J, Sperry JS, Hacke UG, Wheeler JK & Sikkema EH. 2005. Torus-margo pits help conifers compete with angiosperms. *Science* 310: 1924--1924. <https://doi.org/10.1126/science.1120479>
- Pittermann J, Sperry JS, Hacke UG, Wheeler JK & Sikkema EH. 2006a. Inter-tracheid pitting and the hydraulic efficiency of conifer wood: the role of tracheid allometry and cavitation protection. *Am. J. Bot.* 93: 1265--1273. <https://doi.org/10.3732/ajb.93.9.1265>
- Pittermann J, Sperry JS, Wheeler JK, Hacke UG & Sikkema EH. 2006b. Mechanical reinforcement of tracheids compromises the hydraulic efficiency of conifer xylem. *Plant Cell Environ.* 29: 1618--1628. <https://doi.org/10.1111/j.1365-3040.2006.01539.x>
- Pittermann J, Choat B, Jansen S, Stuart SA, Lynn L & Dawson TE. 2010. The relationships between xylem safety and hydraulic efficiency in the Cupressaceae: the evolution of pit membrane form and function. *Plant Physiology* 153: 1919--1931. <https://doi.org/10.1104/pp.110.158824>
- Pittermann J, Limm E, Rico C & Christman MA. 2011. Structure-function constraints of tracheid-based xylem: a comparison of conifers and ferns. *New Phytol.* 192: 449--461. <https://doi.org/10.1111/j.1469-8137.2011.03817.x>

- 1
2
3
4
5
6
7
8
9
10
11
12
13
14
15
16
17
18
19
20
21
22
23
24
25
26
27
28
29
30
31
32
33
34
35
36
37
38
39
40
41
42
43
44
45
46
47
48
49
50
51
52
53
54
55
56
57
58
59
60
61
62
63
64
65
- Prestianni C, Decombeix A-L, Thorez J, Fokand D & Gerrienne P. 2010. Famennian charcoal of Belgium. *Palaeogeogr. Palaeoclimatol. Palaeoecol.* 291: 60--71.
<https://doi.org/10.1016/j.palaeo.2009.10.008>
- Raven JA. 1994. Physiological analyses of aspects of the functioning of vascular tissue in early plants. *Botanical Journal of Scotland* 47: 49--64.
<https://doi.org/10.1080/03746609408684817>
- Renault B. 1879. Structure comparée de quelques tiges de la flore carbonifère. *Nouvelles Annales du Muséum d'Histoire Naturelle* 2: 213--348.
- Rößler R & Noll R. 2006. Sphenopsids of the Permian (I): The largest known anatomically preserved calamite, an exceptional find from the petrified forest of Chemnitz, Germany. *Rev. Palaeobot. Palynol.* 140: 145--162. <https://doi.org/10.1016/j.revpalbo.2006.03.008>
- Roth A & Mossbruger V. 1996. Numerical studies of water conduction in land plants: evolution of early stele types. *Paleobiology* 22: 411--421.
<https://doi.org/10.1017/S0094837300016365>
- Rothwell GW. 1999. Fossils and ferns in the resolution of land plant phylogeny. *Bot. Rev.* 65: 188--218. <https://doi.org/10.1007/BF02857629>
- Rothwell GW & Serbet R. 1994. Lignophyte phylogeny and the evolution of spermatophytes: a numerical cladistic analysis. *Syst. Bot.* 19: 443--482. <https://doi.org/10.2307/2419767>
- Rothwell GW, Sanders H, Wyatt SE & Lev-Yadun S. 2008. A fossil record for growth regulation: the role of auxin in wood evolution. *Ann. Mo. Bot. Gard.* 95: 121--134.
<https://doi.org/10.3417/2006208>
- Rowe NP & Speck T. 2004. Hydraulics and mechanics of plants: novelty, innovation and evolution. In: I Poole & AR Hemsley (eds.), *The evolution of plant physiology*: 297--325. Elsevier Academic Press, Kew, UK. <https://doi.org/10.1016/B978-012339552-8/50017-2>

- 1
2 Rubinstein CV, Gerrienne P, de la Punte GS, Astini RA & Steemans P. 2010. Early Middle
3 Ordovician evidence for land plants in Argentina (eastern Gondwana). *New Phytol.* 188:
4 365--369. <https://doi.org/10.1111/j.1469-8137.2010.03433.x>
5
6
7 Sanders H, Rothwell GW & Wyatt SE. 2009. Key morphological alterations in the evolution
8 of leaves. *Int. J. Plant Sci.* 170: 860--868. <https://doi.org/10.1086/600135>
9
10
11 Sanders H, Rothwell GW & Wyatt SE. 2011. Parallel evolution of auxin regulation in rooting
12 systems. *Plant Sys. Evol.* 291: 221--225. <https://doi.org/10.1007/s00606-010-0383-1>
13
14
15 Saulnier G, Boura A, Bernard G, Daviero-Gomez V, De Franceschi D, Pons D, Garcia G,
16
17 Boiteau J-M & Valentin X. 2018. Diversity in Cenomanian forests: an example from the
18
19 Envigne Valley (Vienne), France. 10th European Palaeobotany and Palynolog
20
21
22 Conference, Dublin.
23
24
25
26 Scheckler SE. 1974. Systematic characters of Devonian ferns. *Ann. Mo. Bot. Gard.* 61: 462--
27
28 473. <https://doi.org/10.2307/2395068>
29
30
31 Scheckler SE. 1976. Ontogeny of progymnosperms. I. Shoots of Upper Devonian
32
33 Aneurophytales. *Can. J. Bot.* 54: 202--219. <https://doi.org/10.1139/b76-020>
34
35
36 Scheckler SE. 1978. Ontogeny of progymnosperms. II. Shoots of Upper Devonian
37
38 Archaeopteridales. *Can. J. Bot.* 56: 3136--3170. <https://doi.org/10.1139/b78-376>
39
40
41 Scheckler SE & Banks HP. 1971. *Proteokalon*, a new genus of progymnosperm from the
42
43 Devonian of New York State and its bearing on phylogenetic trends in the group. *Am. J.*
44
45 *Bot.* 58: 874--884. <https://doi.org/10.2307/2441566>
46
47
48 Schmid R. 1967. Electron microscopy of wood of *Callixylon* and *Cordaites*. *Am. J. Bot.* 54:
49
50 720--729. <https://doi.org/10.2307/2440949>
51
52
53 Schneider EL & Carlquist S. 2000. SEM Studies on the vessels of heterophyllous species of
54
55 *Selaginella*. *J. Torrey Bot. Soc.* 127: 263--270. <https://doi.org/10.1086/317557>
56
57
58
59
60
61
62
63
64
65

- 1
2
3
4
5
6
7
8
9
10
11
12
13
14
15
16
17
18
19
20
21
22
23
24
25
26
27
28
29
30
31
32
33
34
35
36
37
38
39
40
41
42
43
44
45
46
47
48
49
50
51
52
53
54
55
56
57
58
59
60
61
62
63
64
65
- Schneider H, Pryer K, Cranfill R, Smith A & Wolf P. 2002. Evolution of vascular plant body plans: a phylogenetic perspective In: QCB Cronk, RM Bateman & JA Hawkins (eds.), *Developmental Genetics and Plant Evolution*: 330-364. Taylor & Francis, London, UK.
<https://doi.org/10.1201/9781420024982.ch17>
- Serbet R & Rothwell GW. 1992. Characterizing the most primitive seed ferns. I. A Reconstruction of *Elkinsia polymorpha*. *Int. J. Plant Sci.* 4: 602-621.
<https://doi.org/10.1086/297083>
- Speck T & Vogellehner D. 1988. Biophysical examinations of the bending stability of various stele types and the upright axes of early "vascular" land plants. *Botanica Acta* 101: 262--268. <https://doi.org/10.1111/j.1438-8677.1988.tb00042.x>
- Speck T & Vogellehner D. 1992. Biomechanics and maximum height of some Devonian land plants. In: J Kovar-Eder (ed.), *Palaeovegetational development in Europe and regions relevant to its palaeofloristic evolution: proceedings of the Pan-European Palaeobotanical Conference, Vienna, 19-23 September 1991*, PEPC 1991: 413--422. Museum of Natural History, Vienna, Austria.
- Sperry JS, Hacke UG & Pittermann J. 2006. Size and function in conifer tracheids and angiosperm vessels. *Am. J. Bot.* 93: 1490--1500. <https://doi.org/10.3732/ajb.93.10.1490>
- Sperry JS, Meinzer FC & McCulloh KA. 2008. Safety and efficiency conflicts in hydraulic architecture: scaling from tissues to trees. *Plant Cell Environ.* 31: 632--645.
<https://doi.org/10.1111/j.1365-3040.2007.01765.x>
- Steemans P, Le Hérissé A, Melvin J, Miller MA, Paris F, Verniers J & Wellman CH. 2009. Origin and radiation of the earliest vascular land plants. *Science* 324: 353.
<https://doi.org/10.1126/science.1169659>

- 1
2 Stein WE. 1993. Modeling the evolution of stelar architecture in vascular plants. *Int. J. Plant*
3 *Sci.* 154: 229--263. <https://doi.org/10.1086/297106>
4
5 Stein WE & Beck CB. 1983. *Triloboxylon arnoldii* from the Middle Devonian of western
6
7 New York. *Contrib. Mus. Paleontol. Univ. Mich.* 26: 257--288.
8
9
10 Stewart WN & Rothwell GW. 1993. *Paleobotany and the evolution of plants*. Second edition.
11
12 Cambridge University Press, Cambridge, UK.
13
14 Strullu- Derrien C, Kenrick P, Tafforeau P, Cochard H, Bonnemain J- L, Le Hérissé A,
15
16 Lardeux H & Badel E. 2014. The earliest wood and its hydraulic properties documented
17
18 in c. 407- million- year- old fossils using synchrotron microtomography. *Bot. J. Linn.*
19
20 *Soc.* 175: 423--437. <https://doi.org/10.1111/boj.12175>
21
22
23
24 Tanrattana M, Barczi J-F, Decombeix A-L, Meyer-Berthaud B & Wilson JP. 2019. A new
25
26 approach for modelling water transport in fossil plants. *IAWA J.*
27
28
29 Taylor TN, Taylor EL & Krings M. 2009. *Paleobotany: The Biology and Evolution of Fossil*
30
31 *Plants*. Second ed. Academic Press, Amsterdam.
32
33
34 Taylor WA & Wellman CH. 2009. Ultrastructure of enigmatic phytoclasts (banded tubes)
35
36 from the Silurian–Lower Devonian: evidence for affinities and role in early terrestrial
37
38 ecosystems. *Palaios* 24: 167--180. <https://doi.org/10.2110/palo.2008.p08-046r>
39
40
41 Terreaux de Félice H, Decombeix A-L & Galtier J. In press. Anatomy, affinities, and
42
43 evolutionary implications of new silicified stems of *Sphenophyllum* from the early
44
45 Carboniferous (Mississippian) of France and Germany. *Geodiversitas*.
46
47
48
49 Thompson WP. 1918. Independent evolution of vessels in Gnetales and Angiosperms. *Bot.*
50
51 *Gaz.* 65: 83--90. <https://doi.org/10.1086/332191>
52
53
54
55
56
57
58
59
60
61
62
63
64
65

- 1
2
3
4
5
6
7
8
9
10
11
12
13
14
15
16
17
18
19
20
21
22
23
24
25
26
27
28
29
30
31
32
33
34
35
36
37
38
39
40
41
42
43
44
45
46
47
48
49
50
51
52
53
54
55
56
57
58
59
60
61
62
63
64
65
- Tian BL & Li HQ. 1992. A new special petrified stem, *Guizhouoxylon dahebianense* gen. et sp. nov., from Upper Permian in Suicheng district, Guizhou, China. *Acta Palaeontol. Sin.* 31: 336--345 [in Chinese with English Abstract].
- Toledo S, Bippus AC & Tomescu AMF. 2018. Buried deep beyond the veil of extinction: euphyllophyte relationships at the base of the spermatophyte clade. *Am. J. Bot.* 105: 1264--1285. <https://doi.org/10.1002/ajb2.1102>
- Tomescu AMF. 2009. Megaphylls, microphylls and the evolution of leaf development. *Trends Plant Sci.* 14: 5--12. <https://doi.org/10.1016/j.tplants.2008.10.008>
- Tomescu AMF & Groover AT. 2019. Mosaic modularity: an updated perspective and research agenda for the evolution of vascular cambial growth. *New Phytol.* <https://doi.org/10.1111/nph.15640>
- Trueba S, Delzon S, Isnard S & Lens F. 2019. Similar hydraulic efficiency and safety across vesselless angiosperms and vessel-bearing species with scalariform perforation plates. *J. Exp. Bot.* <https://doi.org/10.1093/jxb/erz133>
- Tyree MT & Ewers FW. 1991. The hydraulic architecture of trees and other woody plants, *New Phytol.* 119: 345--360. <https://doi.org/10.1111/j.1469-8137.1991.tb00035.x>
- Tyree MT, Davis SD & Cochard H. 1994. Biophysical perspectives of xylem evolution: is there a tradeoff of hydraulic efficiency for vulnerability to dysfunction? *IAWA J.* 15(4): 335--360. <https://doi.org/10.1163/22941932-90001369>
- Unger HR. 1847. *Chloris protogæa*. Beiträge zur flora der vorwelt. W Engelmann, Leiptzig. <https://doi.org/10.5962/bhl.title.141709>
- Vozenin-Serra C & Pons D. 1990. Intérêts phylogénétique et paléoécologique des structures ligneuses homoxylées découvertes dans le Crétacé inférieur du Tibet méridional. *Palaeontographica* 126B:107--127.

- 1 Wellman CH. 2018. Palaeoecology and palaeophytogeography of the Rhynie chert plants:
2 further evidence from integrated analysis of in situ and dispersed spores. Philos. Trans. R.
3 Soc. Lond. B Biol. Sci. 373: 20160491. <https://dx.doi.org/10.1098%2Frstb.2016.0491>
4
5
6
7 Wheeler, E.A. 1983. Intervascular pit membranes in *Ulmus* and *Celtis* native to the United
8 States. IAWA Journal 4: 79-88. <https://doi.org/10.1163/22941932-90000400>
9
10
11
12 Wheeler EA & Baas P. 2019. Wood evolution: Baileyan trends and Functional traits in the
13 fossil record. IAWA J. <https://doi.org/10.1163/22941932-40190230>
14
15
16
17 Wheeler EA, Srivastava R, Manchester SR & Baas P. 2017. Surprisingly modern Latest
18 Cretaceous– earliest Paleocene woods of India. IAWA J. 38: 456--542.
19
20
21 <https://doi.org/10.1163/22941932-20170174>
22
23
24 Wight DC. 1987. Non-adaptive change in early land plant evolution. Paleobiology 13: 208--
25 214. <https://doi.org/10.1017/S0094837300008757>
26
27
28
29 Willis KJ. 2017. State of the world's plants 2017. Report. Royal Botanic Gardens, Kew.
30
31 <https://stateoftheworldsplants.org/>
32
33
34 Wilson JP. 2013. Modeling 400 million years of plant hydraulics. The Paleontological Society
35 Papers 19: 175--194. <https://doi.org/10.1017/S1089332600002734>
36
37
38
39 Wilson JP. 2016. Hydraulics of *Psilophyton* and evolutionary trends in plant water transport
40 after terrestrialization. Rev. Palaeobot. Palynol. 227: 65--76.
41
42
43 <https://doi.org/10.1016/j.revpalbo.2015.11.010>
44
45
46 Wilson JP & Knoll AH. 2010. A physiologically explicit morphospace for tracheid-based
47 water transport in modern and extinct seed plants. Paleobiology 36: 335--355.
48
49
50 <https://doi.org/10.1666/08071.1>
51
52
53
54 Wilson JP, Knoll AH, Holbrook NM & Marshall CR. 2008. Modeling fluid flow in
55 *Medullosa*, an anatomically unusual Carboniferous seed plant. Paleobiology 34: 472--
56 493. <https://doi.org/10.1666/07076.1>
57
58
59
60
61
62
63
64
65

1 Witham HTM. 1831. Observations on fossil vegetables accompanied by representation of
2 their internal structure, as seen through the microscope. W Blackwood, Edinburgh & T
3 Cadell, London.
4
5
6

7 Witham HTM. 1833. The internal structure of fossil vegetables found in the carboniferous and
8 oolitic deposits of Great Britain. A & C Black, Edinburgh.
9
10
11
12 <https://doi.org/10.5962/bhl.title.119949>
13

14 Woodcock DW, Meyer HW & Prado Y. 2019. The Piedra Chamana fossil woods (Eocene,
15 Peru), II. IAWA J. 40: --- <https://doi.org/10.1163/22941932-40190231>
16
17
18

19 Xu H-H, Berry CM, Stein WE, Wang Y, Tang P & Fu Q. 2017. Unique growth strategy of the
20 oldest fossil trees. Proc. Nat. Acad. Sci. 114:201708241.
21
22
23
24 <https://doi.org/10.1073/pnas.1708241114>
25

26 Zimmermann MH. 1978. Hydraulic architecture of some diffuse-porous trees. Can. J. Bot. 56:
27 2286--2295. <https://doi.org/10.1139/b78-274>
28
29
30

31 Zimmermann W. 1959. Die Phylogenie der Pflanzen, 2nd ed. Gustav Fischer, Stuttgart,
32 Germany.
33
34
35
36
37
38
39
40
41
42
43
44
45
46
47
48
49
50
51
52
53
54
55
56
57
58
59
60
61
62
63
64
65

FIGURE LEGENDS

Fig. 1. Simplified phylogenetic tree of embryophytes and stratigraphic ranges of the main lineages. The tree topology is composite, based on several studies from the recent literature. Observed stratigraphic ranges (as documented by unambiguous fossils) shown by continuous lines. Dashed lines represent ranges hypothesized based on phylogenetic analyses or molecular dating. Extinct groups in blue; taxa in quotation marks are considered paraphyletic. Geologic time scale as adopted by the International Commission on Stratigraphy (v2018/08).

Fig. 2. First occurrences and stratigraphic ranges of main characters in vascular plant evolution discussed in this paper. Sections 1-5 correspond to the text sections. Stratigraphic ranges of early tracheid types based on Edwards (2003, Fig.1). “Modern tracheids” include both those of lycopsids and of euphyllophytes. A cambial layer in extant lycopsids is present in *Isoetes* (see text and Fig. 6A, B). Taxa in blue are extinct groups. Taxon names and geologic time scale as in Fig. 1.

Fig. 3. Water-conducting cells in early land plants (top) with details of their wall structure (bottom). A. Bryophyte hydroid; B. S-type tracheid (fossil) typical of rhyniopsids; C: G-type tracheid (fossil) typical of zosterophyllophytes; D: P-type tracheid (fossil) typical of trimerophyte grade plants (basal euphyllophytes). **From Kenrick & Crane 1997**

Fig. 4. Stellar diversity part 1. Dotted line = epidermis, white = ground tissues, grey = primary phloem, black = primary xylem. Ts = transverse section.
A-C. Protostele; B. Ts of *Gleichenia* sp. stem (extant); C. Ts of *Lepidodendron esnostense* stem, early Carboniferous, France.

1 D-F. Actinostele; E. Ts of *Psilotum* sp. axis (extant); F. Ts of *Tristichia longii*, early
2 Carboniferous, France.
3

4 G-I. Plectostele; H. Ts of *Selaginella* sp. stem (extant); I. Ts of *Xenocladia medullosina*,
5 Middle Devonian, Kazakhstan.
6

7 J-L. Solenostele; K. Ts of *Adiantum* sp. rhizome (extant); L. Ts of *Tempskya* sp. rhizome,
8 middle Cenomanian, France.
9

10 Scale bars: E = 250 μ m; B, H, K = 500 μ m; C, L = 1 mm; F, I = 2 mm.
11
12
13

14
15
16
17
18
19 **Fig. 5.** Stelar diversity part 2. Dotted line = epidermis, white = ground tissues, grey = primary
20 phloem, black = primary xylem. Ts = transverse section.
21

22
23
24 A-C. Dictyostele; B. Ts of *Polypodium* sp. rhizome (extant); C. Ts of *Psaronius brasiliensis*
25 stem (MNHN.F.1445 picture. R. Thomas), Permian, Brazil.
26

27
28
29 D-F. Eustele; E. Ts of *Vitis vinifera* stem (extant); F. Ts of *Callixylon zalessky*, Late
30 Devonian, USA.
31

32
33
34 G-I. Atactostele; H. Ts of *Oenocarpus* sp. stem (extant); I. Ts of *Palmoxylon* sp., Oligocene,
35 France.
36

37
38
39 Scale bars: E = 500 μ m; B, I = 1 mm; F = 2 mm; H = 5 mm; C = 5 cm.
40
41
42

43
44 **Fig. 6.** Secondary growth. Ts = transverse section.
45

46 A-B. Secondary growth from a bifacial cambium in *Isoetes* sp. stem (extant); A. Ts, cambium
47 located at the periphery of lighter, vacuolated area around the central tissues; B. Radial
48 longitudinal section, cambium located along the vertical boundaries between the lighter,
49 vacuolated layers and the dark-nucleated layers that border them externally.
50
51
52
53
54
55
56
57
58
59
60
61
62
63
64
65

1 C-E. Unifacial cambial growth; C. Ts of *Lepidodendron serratum*, late Carboniferous, USA;

2 D. Ts of *Cladoxylon* sp., early Carboniferous, Germany; E. Ts of *Arthropitys* sp., late
3 Carboniferous, USA.
4

5 F. Bifacial cambium in *Sphenophyllum* sp., Permian, France.
6

7 G-H. Bifacial cambium with well-preserved secondary phloem; G. Ts of *Tetraxylopteris* sp.,
8 Middle Devonian, USA; H. Ts of *Stanwoodia* sp., early Carboniferous, Scotland.
9

10 Scale bars: A, G, H = 250 μm ; B, E, F = 500 μm ; D=1.5 mm; C = 5 mm.
11
12
13

14
15
16
17
18
19 **Fig. 7.** Homoxylous wood. Ts = transverse section.
20

21 A. Ts; Picoxylic wood in *Callixylon* sp., Late Devonian, USA.
22

23 B. Ts; Manoxylic wood in *Calamopitys schweitzeri*, early Carboniferous, France.
24

25 C. Tangential longitudinal section (Tls); Multiseriate rays up to 100 cells high in *Eristophyton*
26 *waltonii*, early Carboniferous, Scotland.
27
28

29 D. Radial longitudinal section (Rls); Crowded multiseriate oval to oblique bordered pits with
30 oval aperture in *Callixylon* sp., Late Devonian, USA.
31
32

33 E. Rls; Scalariform pits in *Protopitys* sp., early Carboniferous, France.
34
35

36 F-G. Ts; Unusual homoxylous wood structure in *Lhassoxylon aptianum* (UPMC 10468) and
37 in a specimen from Neraudeau et al. (2017).
38
39

40 H. Ts; Homoxylous wood structure in *Drimys* sp. (Winteraceae; extant)
41
42

43 Scale bar D, E = 100 μm , A, B = 200 μm , F, G = 250 μm , C, H = 500 μm .
44
45
46
47
48
49
50

51 **Fig. 8.** Vessels and heteroxylous woods.
52

53 A-C. Vessels in the primary xylem A-B. *Pteris* sp. (extant) C. *Tempskya* sp. rhizome, middle
54 Cenomanian, France.
55
56

57 D. Ts. Vessels in *Vasovinea tianii* (Gigantopteridales)
58
59
60
61
62
63
64
65

1 E-G. Heteroxylous wood in *Ephedra* sp. (extant) (Gnetales), E-F. Ts, G. Rls. foraminate
2 perforation plate.
3

4 Scale bar G = 50 μm , B, C = 100 μm A, F = 200 μm D, E = 1 mm.
5
6
7
8
9
10
11
12
13
14
15
16
17
18
19
20
21
22
23
24
25
26
27
28
29
30
31
32
33
34
35
36
37
38
39
40
41
42
43
44
45
46
47
48
49
50
51
52
53
54
55
56
57
58
59
60
61
62
63
64
65

Figure 1 Phylogeny

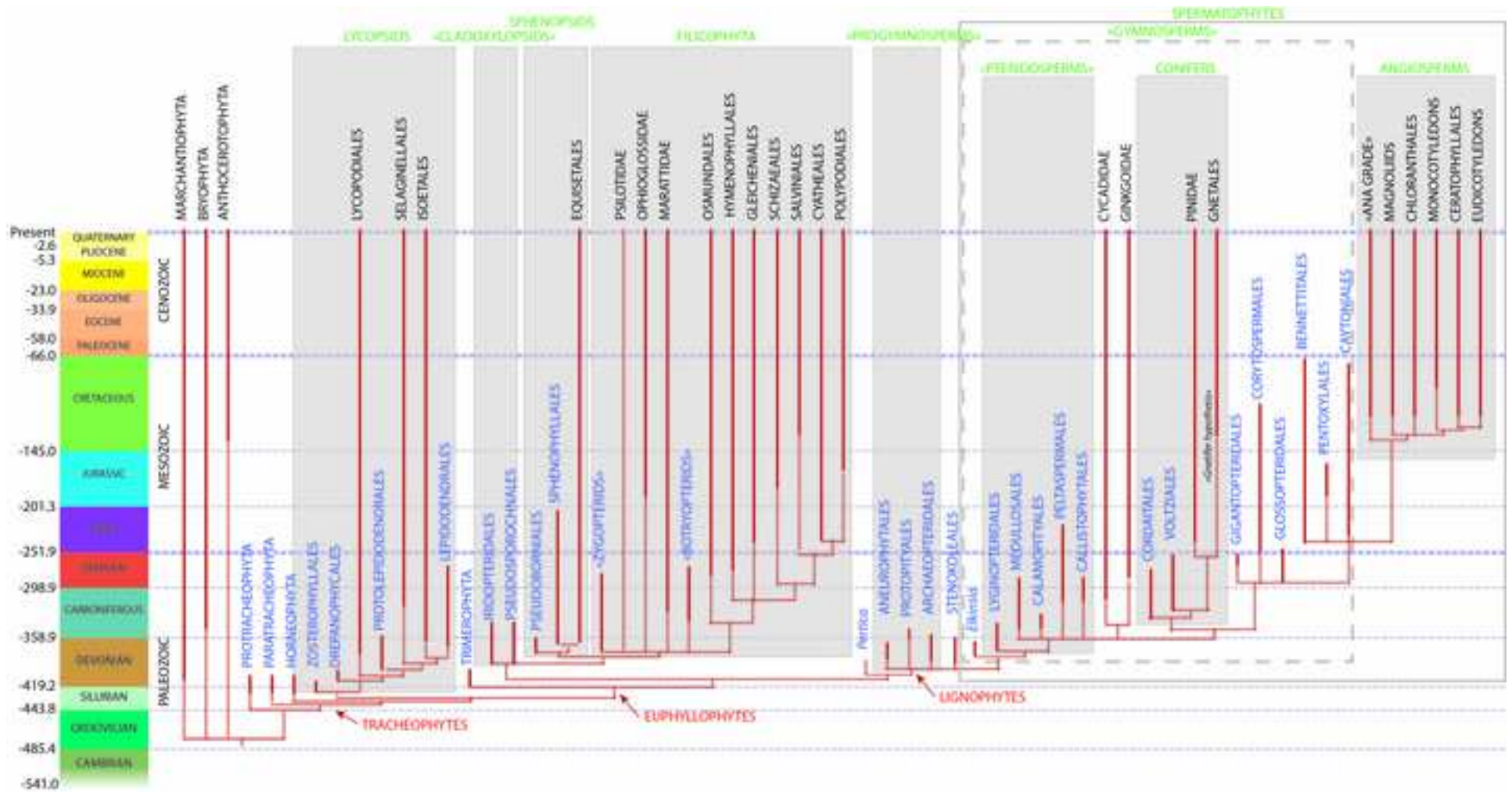
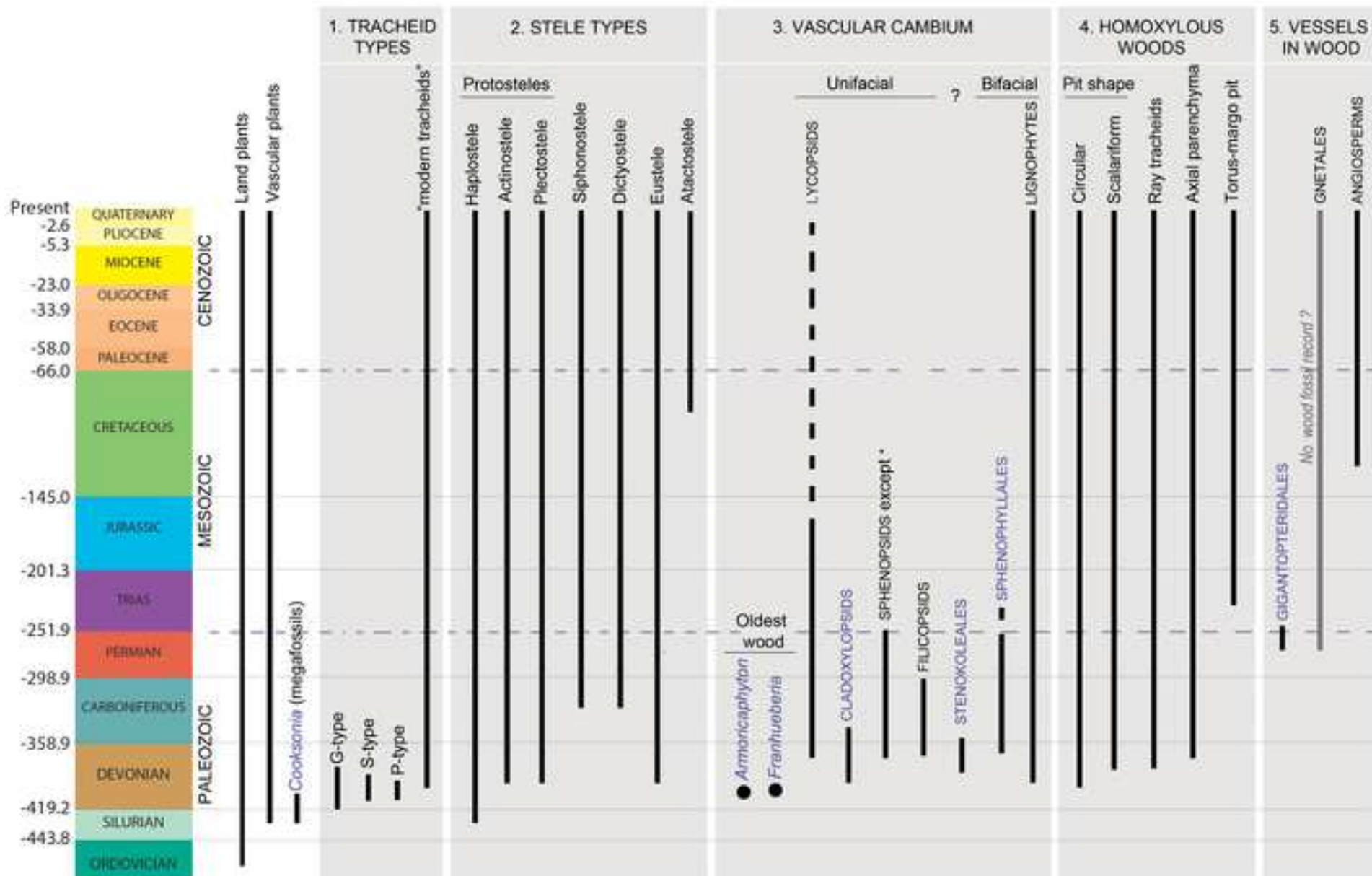
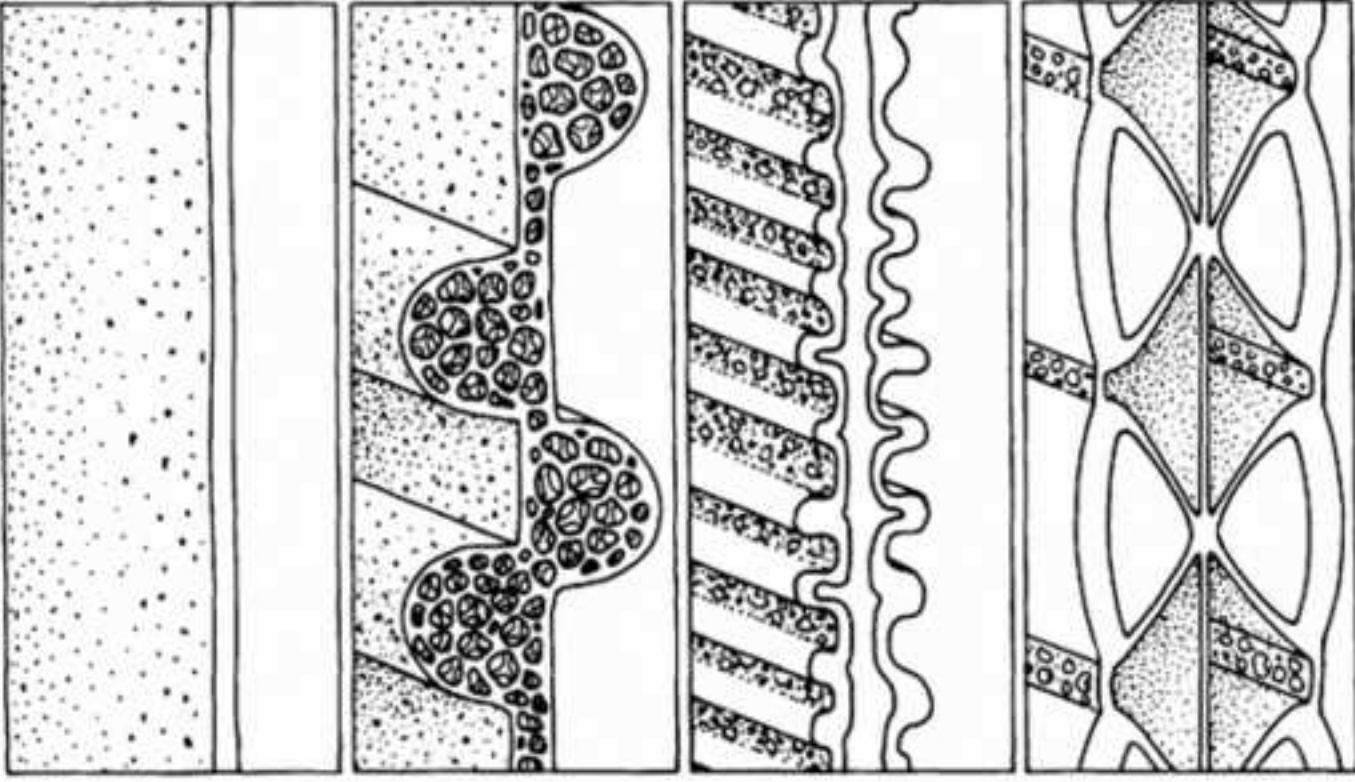
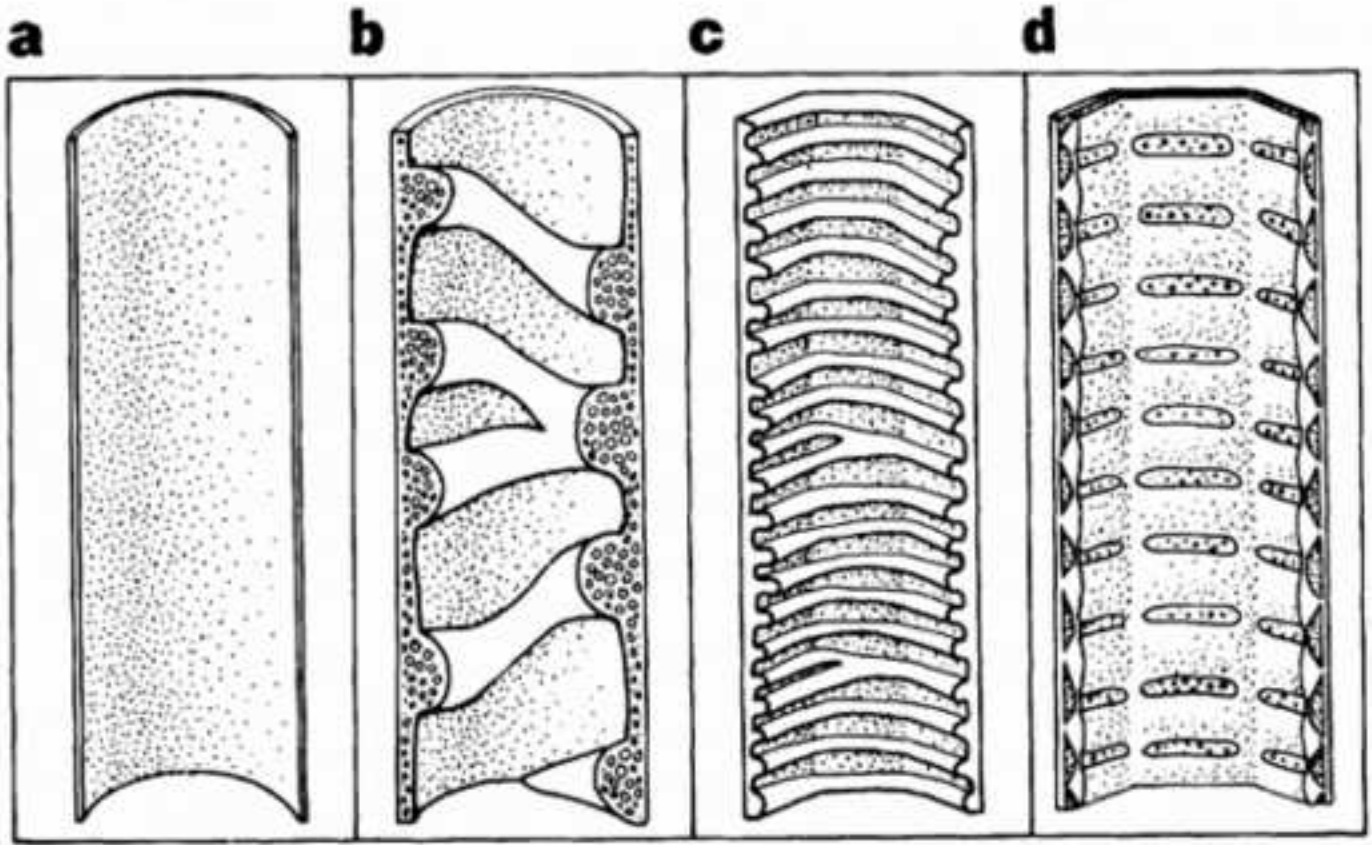
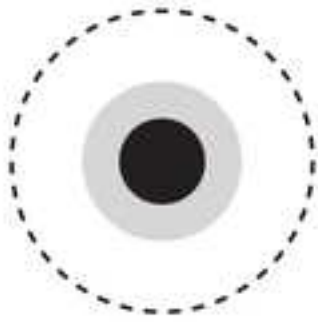


Figure 2 Main events





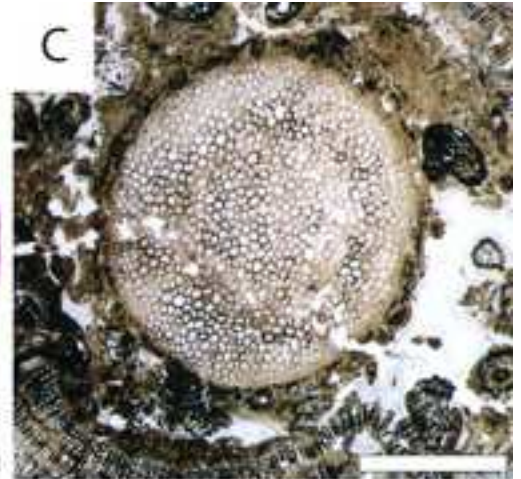
A



B



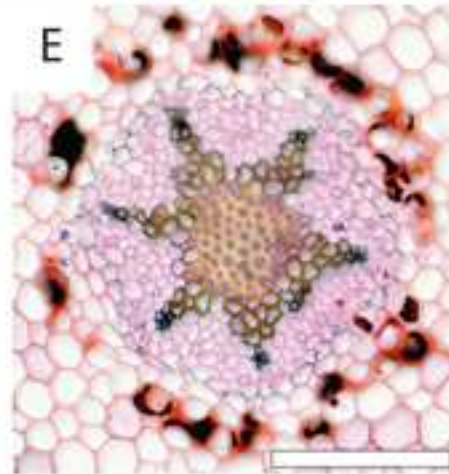
C



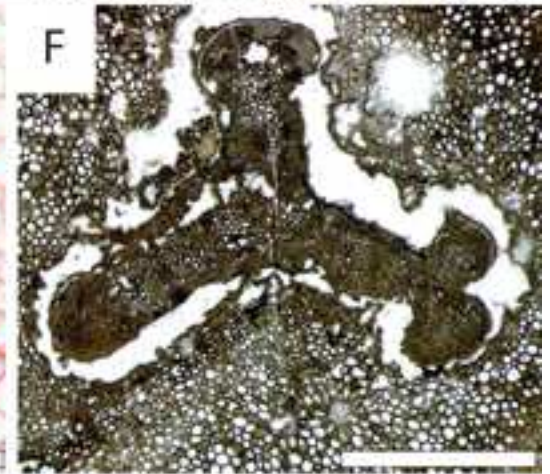
D



E



F



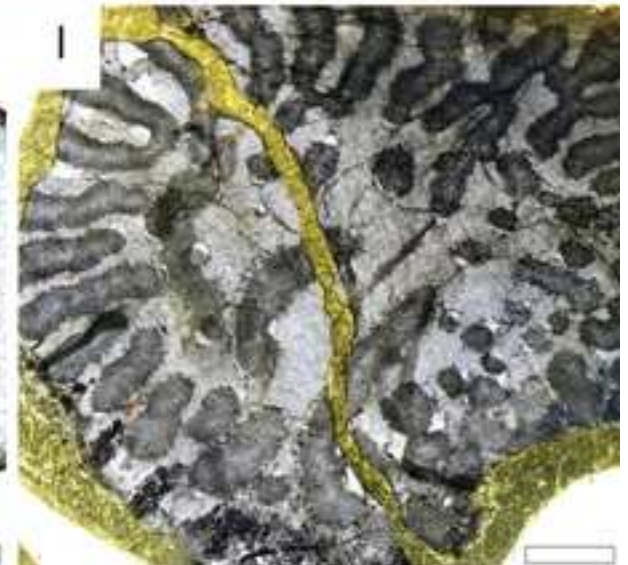
G



H



I



J



K



L



