

No evidence of interspecific genetic exchange by multi-locus microsatellite typing between *Leishmania Killicki* and *Leishmania Major* in a mixed focus of cutaneous Leishmaniasis in Southeast Tunisia

Myriam Harrabi, Wissem Ghawar, Mallorie Hide, Jihene Bettaieb, Rihab Yazidi, Kaouthar Jaouadi, Chaabane Sana, Bilel Chalgha, Amine Toumi, Amor Zaatour, et al.

► **To cite this version:**

Myriam Harrabi, Wissem Ghawar, Mallorie Hide, Jihene Bettaieb, Rihab Yazidi, et al.. No evidence of interspecific genetic exchange by multi-locus microsatellite typing between *Leishmania Killicki* and *Leishmania Major* in a mixed focus of cutaneous Leishmaniasis in Southeast Tunisia. *Journal of Infectious Diseases*

Preventive Medicine, OMICS International, 2017, 5 (2), pp.1000163. <10.4172/2329-8731.1000163>. <hal-02011014>

HAL Id: hal-02011014

<https://hal.umontpellier.fr/hal-02011014>

Submitted on 7 Feb 2019

HAL is a multi-disciplinary open access archive for the deposit and dissemination of scientific research documents, whether they are published or not. The documents may come from teaching and research institutions in France or abroad, or from public or private research centers.

L'archive ouverte pluridisciplinaire **HAL**, est destinée au dépôt et à la diffusion de documents scientifiques de niveau recherche, publiés ou non, émanant des établissements d'enseignement et de recherche français ou étrangers, des laboratoires publics ou privés.

No Evidence of Interspecific Genetic Exchange by Multi-Locus Microsatellite Typing Between *Leishmania Killicki* and *Leishmania Major* in a Mixed Focus of Cutaneous Leishmaniasis in Southeast Tunisia

Myriam Harrabi^{1,2*}, Wissem Ghawar¹, Mallorie Hide³, Jihène Bettaieb¹, Rihab Yazidi¹, Kaouther Jaouadi¹, Chaâbane Sana¹, Bilel Chalgha¹, Amine Toumi¹, Amor Zaâtour¹, Mohamed Raouène⁴, Anne-Laure Bañuls³ and Afif Ben Salah¹

¹Institut Pasteur, 13, Place Pasteur, Service du Laboratoire d'Épidémiologie Médicale et Laboratoire de Transmission, Tunisia

²Faculté des Sciences de Bizerte-7021 Jarzouna-Université de Carthage, Tunis, Tunisia

³UMR MIVEGEC, Centre IRD de Montpellier 911, Montpellier, France

⁴Direction Régionale de la santé de Tataouine- 3263 Tataouine Nouvelle- Tunisie, Tunisia

*Corresponding author: Myriam Harrabi, Institut Pasteur, 13, Place Pasteur, Service du Laboratoire d'Épidémiologie Médicale et Laboratoire de Transmission, Contrôle et Immunobiologie des Infections, Tunisia, Tel: +216 23 400 448; E-mail: myriamharrabi@yahoo.fr

Received date: March 16, 2017; Accepted date: May 10, 2017; Published date: May 17, 2017

Copyright: ©2017 Harrabi M, et al. This is an open access article distributed under the terms of the Creative Commons Attribution License, which permits unrestricted use, distribution, and reproduction in any medium, provided the original author and source are credited.

Abstract

Sixty-four *Leishmania* samples were isolated from patients in several villages in the Tataouine governorate, southeast Tunisia. This region is known to be a mixed focus of human cutaneous leishmaniasis caused by *Leishmania* (*L.*) *killicki* (synonymous *L. tropica*) and *L. Major*. To identify the *Leishmania* species in this governorate, a nested polymerase chain reaction based on the variable region of the kinetoplast minicircle was performed on each isolate. Multi-locus microsatellite typing using markers selected for their ability to amplify the two species was used to explore patterns of interspecific genetic exchange. Thirteen *L. major* and 51 *L. killicki* isolates were identified. The analysis of microsatellite data showed very low genetic diversity in each species with this set of microsatellites but a high differentiation between the two species. Nine *L. major* and five *L. killicki* strains revealed heterozygous genotypes with no shared allele between the two species. These heterozygotes probably resulted from genetic mutation events and not from interspecific genetic exchange. Specific and different epidemiological cycles at the sympatric level might explain the absence of genetic exchange between the two *Leishmania* species in the Tataouine governorate.

Keywords: *L. major*; *L. killicki*; Cutaneous leishmaniasis; Tunisia; Heterozygosity; Microsatellites

Introduction

Leishmaniasis is widespread in Tunisia and considered to be one of the major health problems for the human population [1]. In Tataouine, southeast Tunisia, *Leishmania* (*L.*) *major* and *L. killicki* (synonymous *L. tropica*) [2] are currently the causative agents of cutaneous leishmaniasis (CL) [3]. *Leishmania killicki* is responsible for the chronic CL observed in villages built on the flank of the Rocky Mountains [3-5]. *Leishmania major*, the causative agent of zoonotic CL, probably emerged as a human pathogen in this area as a result of recent establishment of a high density of susceptible human populations at the margins of villages [3].

In Tunisia, *Phlebotomus* (*P.*) *sergenti* and *P. papatasi* are the proven vectors of *L. killicki* (syn. *L. tropica*) and *L. major* species, respectively [6-8]. Recent studies on sandflies showed that *P. papatasi* is the most abundant in the burrows of rodents such as *Meriones*, which are known reservoir hosts of *L. major*. Indoors, *P. sergenti* and *P. papatasi*, known to be endophilic were co-dominant [8]. *Phlebotomus riouxi* (or *P. chabaudi*), which is suspected to be linked to *L. killicki* transmission [9], was the dominant species in the semi-natural rocky habitats associated with the presence of *Ctenodactylus* (*C.*) *gundi*, described as a potential reservoir [7-10]. Concerning the reproductive strategy, the current assumption, mainly based on population genetics studies, is that *Leishmania* alternates between three modes of reproduction:

clonality, allogamy (interspecific recombination), and endogamy (intraspecific recombination), varying according to the species and the environment [11-18].

The occurrence of genetic exchange between different *Leishmania* species (corresponding to allogamy) is now largely accepted. Several cases of hybridization have been described in natural populations between both genetically close or distinct species (*L. braziliensis* and *L. panamensis/guyanensis* [19]; *L. panamensis* and *L. braziliensis* [20]; *L. braziliensis* and *L. guyanensis* [21]; *L. major* and *L. arabica* [22]; multiple hybrid genotypes of *Leishmania* (*Viannia*) species [23]; *L. infantum* and *L. major* [24]; *L. donovani* and *L. aethiopica* [25]; *L. donovani*, *L. major* and *L. infantum* [26]; *L. braziliensis* and *L. peruviana*) [27]. All these hybrids were evidenced by the detection of heterozygous profiles reflecting genetic exchange between different species. Additionally, some reports also suggested that intraspecific hybridization events (corresponding to endogamy) could also occur [28-31]. Several *in vivo* studies demonstrated the capacity of *Leishmania* species to undergo intraspecific genetic exchange in sandflies [32-34]. Although genetic exchanges have been experimentally and empirically demonstrated, questions remain about its frequency in natural *Leishmania* populations and their impact on the evolution of these populations.

In this context, our objective was to explore the existence of hybridization patterns between *L. major* and *L. killicki* by multi-locus microsatellite typing (MLMT) in a CL focus, where the two species are

spreading. A total of 64 *Leishmania* isolates from patients with CL in the southeast of Tunisia (Tataouine governorate) were analyzed.

Materials and Methods

Study area

The study was carried out in the governorate of Tataouine, located in far southeast Tunisia at 32°55'40.16" North, 10°26'57.28" East and an altitude of c. 300 m above sea level [35] (Figure 1). Tataouine is characterized by its vast area (23.7% of the country) and by its international frontiers (Libya and Algeria). This region covers an area of 38,889 km² with a population of 149,453 (2014 census) [36]. Tataouine is subdivided into three biogeographical zones: the desert, the mountain (Dhaher), and the plain (Djefara) (Republic of Tunisia Ministry of Development, Investment and International Cooperation, South Development Office). It has a Mediterranean-desert climate [35]; the average temperature is 22°C and annual rainfall varies between 88 and 157 mm [37]. The regional landscape is characterized by poor vegetation, dominated by steppe species, and rocky escarpments. The area is pastoral with olive groves and cereals cultivated around water points. *Ctenodactylus gundi* is the most prevalent wild rodent living in the stony mountains. However, gerbils (*Meriones* species) are found at the periphery of villages [38].

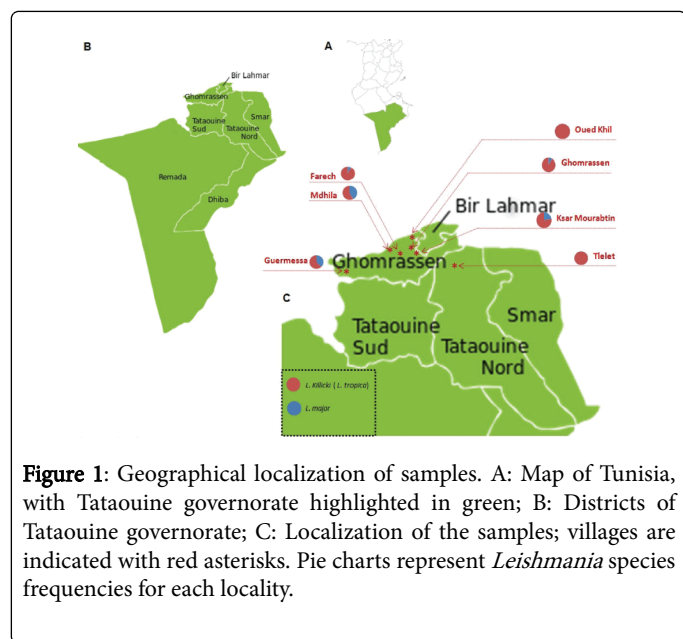


Figure 1: Geographical localization of samples. A: Map of Tunisia, with Tataouine governorate highlighted in green; B: Districts of Tataouine governorate; C: Localization of the samples; villages are indicated with red asterisks. Pie charts represent *Leishmania* species frequencies for each locality.

Parasite samples

Analysis of isolates from 64 human CL cases from the Tataouine governorate was undertaken. The medical records of the patients were collected and provided by the local government hospitals. Data related to age, address, sex, disease onset, number and location of the lesions were recorded, respecting the anonymity of the patients. Cases were mainly recorded from Farech, Ghomrassen, and Guermessa localities. Direct smear and culture growth in modified NNN medium followed by sub-culture in RPMI-1640 was performed for each case during the diagnosis of the disease as part of the standard of care.

Leishmania identification

Some isolates were previously characterized by the multi-locus enzyme electrophoresis technique performed in the World Health Organization (WHO) reference center of leishmaniasis in Montpellier “Centre National de Référence des Leishmanioses”; they are indicated in Supplementary Table 2 with a WHO code (unpublished data). For our study, genomic DNA was extracted from the 64 parasite cultures (promastigotes) using the QIAamp[®] DNA Mini Kit (Qiagen, CA) according to the manufacturer’s protocol. DNA quality was checked by agarose gel electrophoresis and the concentration was measured with a Nano Drop spectrophotometer. For identification of the *Leishmania* species, a nested PCR, previously designed by Noyes et al. (1998) was performed with modifications [39,40].

The presence of a product of approximately 560-bp indicated *L. major* and a product of approximately 750-bp indicated *L. tropica*. Negative control were included in each reaction mix. Two reference strains, *L. tropica* MHOM/SU/74/SAF-K27 and *L. major* MHOM/SU/73/5-ASKH, were included for comparison.

Multilocus Microsatellite Typing

Microsatellite markers

A panel of 11 microsatellite markers designed for the characterization of *L. tropica* species or *L. major* was selected for their potential ability to amplify the two species (Table 1). The selected microsatellite markers were previously described in Schwenkenbecher et al. [41]. As it was recently confirmed that *L. killicki* belongs to the *L. tropica* complex with close genetic relationships [2], we used the *L. tropica* microsatellite markers for genetic characterization of *L. killicki*. In addition to microsatellite markers designed for *L. tropica* with positive PCR products for *L. major*, we selected microsatellite loci originally designed for *L. major* and also able to be amplified in *L. tropica*.

All the selected loci were tested on three *L. major* strains (one reference strain and two isolates from our sample) and three *L. tropica* and *L. killicki* strains (one reference strain and two isolates from our sample). PCR conditions were optimized for the 11 markers to increase the probability of amplifying the loci for both species. Approximately 50 ng of genomic DNA was added to each PCR. A negative control was included in each experiment. Microsatellites were amplified using the following conditions: 94°C for 2 min, followed by 35 cycles of 94°C for 30s, annealing temperature for 1 min (Table 1), and 72°C for 1 min (extension), followed by a final extension at 72°C for 10 min. Genotyping was performed by capillary electrophoresis using an ABI Prism 3130 XL automated DNA sequencer (Applied Biosystems, USA). Fragment size was determined automatically using GeneMapper 4.0 software (Applied Biosystems). Genescan 500 LIZ (Applied Biosystems, France) was used as internal size standard. The loci were then selected and evaluated according to the peak quality and sizing information.

Genetic and Phylogenetic Analyses

FSTAT Version 2.9.3.2 software [42] updated from [43] was used to analyze the data. Genetic polymorphism was measured based on the allelic richness (A) and the Nei’s unbiased estimate of genetic diversity within subsamples (Hs) [44]. FST measures the relative inbreeding in subpopulations attributable to the subdivision of the total population

into subpopulations of limited size. FST also measures the genetic differentiation between subpopulations. The significant departure from zero of these parameters was tested by 10,000 randomization procedures with FSTAT. The significance of these estimates was confirmed by p-values ≤ 0.05 . A neighbor-joining tree, based on Nei's minimum genetic distances was used to cluster the genotypes. Data were computed using POPULATION software to build the distance matrix (version 1.2.28; Centre National de la Recherche Scientifique, UPR9034, Langella, O) and the phylogenetic tree was generated using MEGA software, version 4.0.2 [45].

Results

Lesion type and clinical impression

The lesions were unique in 68.75% (n=44) of cases and showed a clinical polymorphism. The most frequent pattern of eruption was seen

in 78.12% of cases (n=50) patients who had a nodular ulcerative crusting aspects localized predominantly in the limbs (65.62%), followed by nine patients who had plaque-like ulcerative eruption followed by 5 patients who had a dry plaque/nodular eruption. All dry lesions were found to be *Leishmania killicki* (syn. *L. tropica*) (see supplementary Tables 1,2 and Figure 2).

Primer tested	Repeat array	Flanking region size	Labeled Forward Primer (5'→3')	Unlabeled reverse Primer (5'→3')	AT (°C)	Fragment size (bp)c	Applicability for both species <i>L. major</i> and <i>L. tropica</i>
GA1 ^a	(GA)11	44	6FAM-TCGGAGTCACCTCGCACCGC	GGTGGGGCAGGTAAAGCGGC	56	66	Applicable*
GA2 ^a	(GA)8	46	VIC-GATCACAGCGACGTCTGAAG	CCTGCTGCCACCATCTTAGC	56	62	Not applicable**
GA3 ^a	(GA)7	50	NED-GCAGGCGCACACATACCACA	CGCAGCTATTGTGGCCCGG	50	64	Applicable*
GA6 ^a	(GA)8	45	PET-GTGTGAGCTAATCGATTGGG	CGCTCTCTGTCTCTGTCT	42	61	Not applicable**
GA10 ^a	(GA)19	50	6FAM-ACTCACTCCGTTGGGATGAT	CGCGCATATCTCTATCCACT	42	89	Applicable*
Mix9 ^a	(GC/GT)12	44	VIC-CGGCTGAAAGGAGCGCGCC	GTCTGTCTGTCTGTGTGAGC	60	60	Applicable*
GTG3 ^a	(GTG)5	50	NED-TAGAGTGACATCAGGGAGGG	GCCGACAGCGTCTGCTGCCG	50	65	Applicable*
GT4 ^a	(GT)12	50	PET-TCTGTGCATCACTCTCGCCA	TGAGTCTGCGGGCGCGCT	56	74	Applicable*
GACA4 ^a	(GACA)3	50	6FAM-AGCCACACACGGACACACAT	CTCTTCGTCCTCCGTGTGT	62	62	Not applicable**
4GTG ^b	(GTG)5	47	VIC-CGGTTTGGCGCTGAAAGCGG	CGTGAGGACGCCACCGAGGC	54.5	62	Applicable*
27GTG ^b	(GTG)5	44	NED-GGAGGTGGCTGTGGTTGTTG	GCCGCTGACGCTGCAGGCT	50	59	Applicable*

^aOriginally designed for *L. tropica*; ^bOriginally designed for *L. major*; ^cFragment sizes as in the reference strain MHOM/PS/2001/ISL590; ^{*}Usable for both species, *L. major* and *L. tropica*. ^{**}Not usable for both species, *L. major* and *L. tropica*; AT: Annealing temperature.

Table 1: Details of the 11 microsatellite loci selected for the characterization of *L. major* and *L. killicki* species [28].

Population (number of isolates)	Descriptive statistics			
	A	Hs	Ho	He
<i>L. major</i> population (n=13)	1.247	0.08	0.102	0.081
<i>L. killicki</i> population (n=51)	1.118	0.012	0.012	0.012

A: Allelic richness per population based on the standardized minimal sample size; Hs: Gene diversity; Ho: Observed heterozygosity; He: expected heterozygosity.

Table 2: Genetic diversity indices estimated from microsatellite data (eight loci) for the 64 *L. major* and *L. killicki* isolates included in this study.



Figure 2: Clinical spectrum of the cutaneous leishmaniasis. The disease encompasses a range of clinical symptoms, including infiltrated plaque, ulcero-crusted lesions of the leg. (A: lesion caused by *L. major*), small Ulcerative nodule of the hand (B: Lesion caused by *L. killicki*), and non-ulcerative nodule (C: Lesion caused by *L. killicki*), ulcero-crusted nodule of the ear (D: Lesion caused by *L. killicki*) and ulcerative plaque on the face (E: Lesion caused by *L. killicki*).

Identification of *Leishmania* species by nested PCR

All isolates analyzed presented a single *Leishmania* kinetoplast minicircle amplicon of approximately 560-bp or 750-bp, corresponding to *L. major* and *L. tropica* species, respectively. These identifications corroborated the CNRL data for *L. killicki* and *L. major* strains of the 64 samples under study, 51 isolates showed an amplicon size corresponding to *L. tropica* and 13 to *L. major*. The identification of each sample is detailed in Supplementary Table 2 and the village distribution of the two species in Supplementary Table 1 and Figure 1. Both chronic and zoonotic CL co-exist in the Tataouine governorate with *L. killicki* (syn. *L. tropica*) as the predominant species. The majority of the villages under study contained the two species except Tlelet (seven *L. killicki* strains) and Oued Khil (one *L. killicki* strain) localities (see Figure 1).

Microsatellite genotyping

From the 11 microsatellite loci selected from Schwenkenbecher et al. [41], our choice was essentially based on the ability of primer pairs to amplify products from the two species. Eight markers were usable for our purpose including those originally designed for *L. major* (4GTG and 27GTG) [46] (see Table 1). Three markers (GA2, GA6, and GACA4) could not be used because of their inability to amplify both species (GA6), imperfect reproducibility (GACA4), or, in the case of GA2, under the same MLMT-PCR conditions; primer pairs amplified a 66-bp product for *L. killicki* and a 499-bp product for *L. major*, suggesting different genomic targets in the different species.

Forty of the 64 isolates yielded complete genotype data for the eight selected loci. In some cases, no PCR products were obtained in repeated PCR runs, and were treated as missing data for the statistical analyses (see supplementary Table 2). The eight microsatellite markers

were polymorphic, based on number of microsatellite repeats, across the whole sample set, including the reference strains, and five of them revealed heterozygous patterns. Among the 51 *L. killicki* and 13 *L. major* isolates genotyped with the eight loci, a total of 20 different alleles were identified and allelic richness (A) was 1.12 and 1.25, respectively.

The number of alleles per locus ranged from two (GA1, GA3, GTG3, and 4GTG) to three (GA10, Mix9, GT4, and 27GTG). The level of unbiased gene diversity (H_s) across populations was very low for the two species ($H_s=0.080$ for *L. major*; $H_s=0.012$ for *L. killicki*) (Table 2). Overall, 20 different genotypes were detected among the 64 samples analyzed; 5 genotypes for *L. major* populations of 13 isolates and 15 genotypes for *L. killicki* populations of 51 isolates. Nine of the 13 *L. major* isolates from Mdhila, Ferech, and Guermessa displayed an identical heterozygous genotype (64/68) at locus Mix9 (see Supplementary Table 2 and samples with green dots on Figure 2). Four isolates from Ghomrassen and Ksar Mourabtin differed from the first nine either by a distinct allele at locus 27GTG (GHO010) or were homozygous at the Mix9 locus (GHO022, KSM001, and KSM006). Among the *L. killicki* isolates, we obtained two clusters of 28 and 9 isolates showing identical genotypes in each cluster, of which 11 samples had missing data at one or more markers. Seventeen strains had unique genotypes, of which five were heterozygous at loci GA10 (79/85) or GT4 (72/78) (see Supplementary Table 2 and Figure 2). The *L. tropica* reference strains (SAF-K27) revealed four different heterozygous patterns at loci GA10, GTG3, GT4, and 27GTG.

Homozygous genotypes prevailed in our samples. As described above, heterozygous profiles were recorded for 14 isolates (without including *L. tropica* reference strain, MHOM/SU/74/SAF-K27) and on only one locus for each (MIX9 or GT4 or GA10). H_o ranged from 0 to 0.818 and H_e ranged from 0 to 0.506 per locus in the *L. major* population. For *L. killicki*, observed and expected values ranged from 0 to 0.063 and from 0 to 0.062, respectively (data not shown). The mean observed heterozygosity was very low for the *L. killicki* population and slightly higher for the *L. major* population (Table 2). Mean expected heterozygosity within the *L. killicki* population was similar to the mean observed heterozygosity and different to that of the *L. major* population (see Table 2)

Furthermore, it is worth noting that all the heterozygotes displayed one allele observed in the homozygous state in the same species and a second allele absent in the homozygous state. For example, the heterozygotes observed for *L. major* isolates at the locus Mix9 displayed allele (68) found in the homozygous state in the *L. major* population (68/68) and allele (64), which is absent in the homozygous state in the whole population (*L. major* + *L. killicki*) (see Supplementary Table 2). The same pattern is observed in the *L. killicki* population for the GT4 and GA10 markers. The mean F_{ST} value estimated was 0.966 (p -value ≤ 0.05), showing, as expected, a significant level of differentiation between the two species [47]. The data from the MLMT analysis on the 64 *L. major* and *L. killicki* isolates and the two reference strains were used to create matrix distances and construct a neighbor-joining tree representing the relationships among all the strains used in this study. As expected, the MLMT data classified isolates according to the species taxonomy (see supplementary Table 2). Strains with heterozygous genotypes (tagged with green dots) clustered either in *L. killicki* cluster or in *L. major*

one in agreement with their species identification. The phenetic tree did not reveal any cluster with an intermediate position between the two species (see Figure 3).

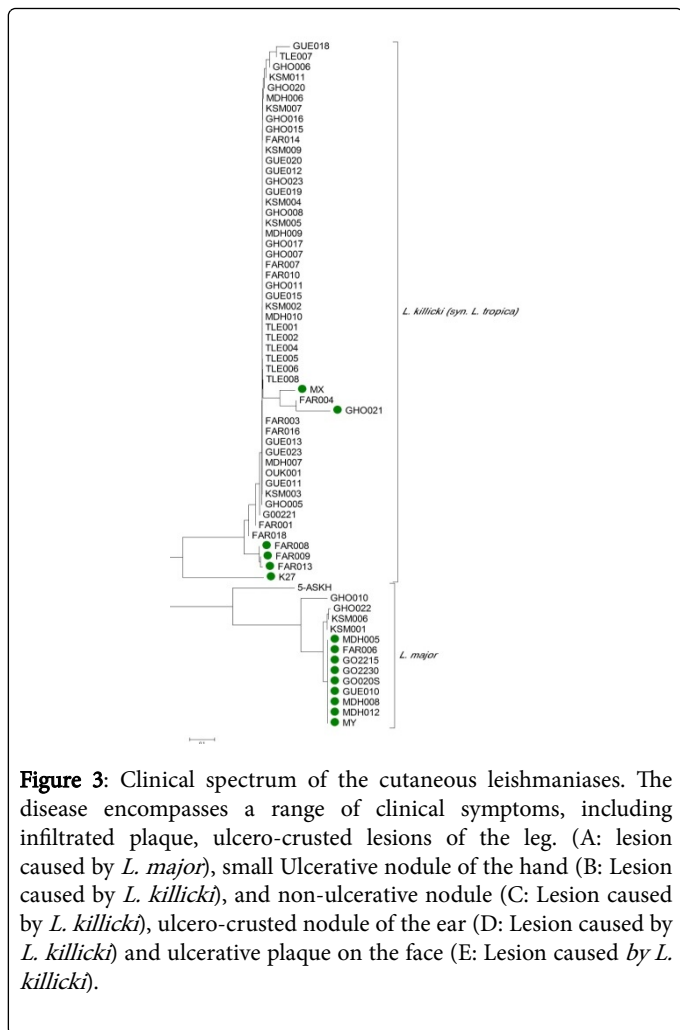


Figure 3: Clinical spectrum of the cutaneous leishmaniasis. The disease encompasses a range of clinical symptoms, including infiltrated plaque, ulcero-crusted lesions of the leg (A: lesion caused by *L. major*), small Ulcerative nodule of the hand (B: Lesion caused by *L. killicki*), and non-ulcerative nodule (C: Lesion caused by *L. killicki*), ulcero-crusted nodule of the ear (D: Lesion caused by *L. killicki*) and ulcerative plaque on the face (E: Lesion caused by *L. killicki*).

Discussion

L. killicki was first detected in the micro-focus of Tataouine in southeast Tunisia in 1980, in an epidemic of CL [4,48]. The first cases of *L. major* in Tataouine were only recorded in 1991 [49,50], but now chronic and zoonotic CL co-exist in this governorate [3-5]. In agreement with previous epidemiological reports, our analysis found that *L. major* and *L. killicki* (syn. *L.tropica*) are the only species circulating in the Tataouine governorate. The isolates were collected in different villages of the investigated region, confirming the geographical spread of *Leishmania* [3,7,9]. Contrary to previous studies, the most abundant species was *L. killicki*, accounting for 80% of our sampling. This difference between our study and previous studies was probably due to the investigation of different villages [3].

The two species showed a very low level of genetic diversity with this set of microsatellite markers. The low degree of polymorphism of *L. killicki* is in agreement with recent data published by Chaara et al. [2]. The authors suggested that the recent emergence and the low level of transmission in humans of this taxon can explain the low level of genetic diversity. Nevertheless, conversely to the data of Chaara et al. [2], we obtained similar observed and expected heterozygosity. This difference can be explained by the extremely low genetic diversity (Hs=0.012) in our study precluding the analysis of the *L. killicki*

population structure. For *L. major*, the previous published data showed a higher genetic diversity in Gafsa, Kairouan, and Sidi Bouzid governorates (Hs=0.321, 0.306, and 0.236, respectively) compared with the results obtained in our study (Hs=0.080) [51], because *L. major* would have emerged simultaneously in Tataouine and Sidi Bouzid, the low heterogeneity found in our analysis is more likely due to the low number of isolates or the different sets of microsatellites between the two studies. We could not further investigate the population structure of this species in Tataouine because of the reduced sample size and low level of genetic diversity. Despite the low level of genetic diversity in each species, the marked differentiation between *L.major* and *L.killicki* allowed us to explore patterns of hybridization between the two species. Furthermore, since the microsatellites are co-dominant and generally neutral markers [52], they have been widely used to study genetic exchange within many organisms [53-55] of which *Leishmania* at both intra and interspecific level (between *L. (Viannia) braziliensis* and *L. (Viannia) guyanensis* [17]; between *L.braziliensis* and *L. peruviana* [23]; between *L.guyanensis* and *L.panamensis* [56]; between MON-1 and MON-24-80 of *L. infantum* [29,57]; between MON-1 and non MON-1 of *L.infantum* [58]; within *L.tropica* [59,60]; within *L. donovani* [31]. In our sample, neither the raw data nor the phenetic analysis suggests the occurrence of interspecific genetic exchange. Fourteen isolates (without including *L.tropica* MHOM/SU/74/SAF-K27 reference strain), belonging either to *L.killicki* or to *L.major*, revealed heterozygous genotypes, with no shared allele between the two species. The accumulation of mutations, consisting of gain/loss of repeat units in microsatellites [61,62] may explain these heterozygous profiles. Both species (*L. major* and *L. killicki*) were collected in Ghomrassen, Guermessa, Farech, and Mdhila villages. The absence of interspecific genetic exchange might be explained by different epidemiological cycles at the sympatric level. These two species seem to have overlapped geographical foci but different vector species and different mammalian reservoir hosts [7,9,10,63], limiting the interactions between them. As reported by Tabbabi et al. the incriminated vectors for *L. major* and *L. killicki* in the Tataouine region would be species specific [9]. Thus, the most likely opportunity for these two species to interact is during mixed infections in humans. According to published data, cross-species genetic exchange between *Leishmania* strains would mainly occur in the invertebrate stage [32-34,64]. These epidemiological and biological aspects could explain the absence of interspecific genetic exchange between *L. killicki* and *L. major* in the Tataouine governorate. Nevertheless, from our data we cannot infer any hypothesis on intraspecific genetic exchange.

Conclusion

In our study, we detected two sympatric species responsible for CL in southeast Tunisia, Tataouine governorate: *L. major* and *L. killicki*. Each species revealed very low intraspecific diversity but high genetic differentiation. Nine *L. major* strains and five *L. killicki* strains displayed heterozygous profiles probably owing to genetic mutations and not to genetic exchange. Specific and different epidemiological cycles at the sympatric level might explain the absence of cross-species genetic exchange between the two species in the Tataouine governorate.

Acknowledgment

The authors thank the Regional Health Directorate of the Tataouine governorate (Tunisia), the "Institut Pasteur Tunis" and the "Institut de Recherche pour le Développement" (Montpellier, France), and the

“Centre National de la Recherche Scientifique” (France) for this cooperative and collaborative project. We acknowledge the field staff of the Department of Medical Biology, Institut Pasteur Tunis, for strain collection and cryobank management; Adel Gharbi and Mongi Dellagi, for ensuring strain and patient data collection in accordance with current Good Clinical Practice guidelines. We gratefully acknowledge the “Centre National de Référence des Leishmanioses” for the multi-locus enzyme electrophoresis typing of some strains.

Conflict of Interest

The authors declare that there is no conflict of interest regarding the publication of this paper.

References

1. Salah AB, Kamarianakis Y, Chlif S, Alaya NB, Prastacos P (2007) Zoonotic cutaneous leishmaniasis in central Tunisia: spatio temporal dynamics. *Int J Epidemiol* 36: 991-1000.
2. Chaara D, Ravel C, Bañuls A, Haouas N, Lami P, et al. (2015) Evolutionary history of *Leishmania killicki* (synonymous *Leishmania tropica*) and taxonomic implications. *Parasit Vectors* 8: 198.
3. Bousslimi N, Aoun K, Ben-Abda I, Ben-Alaya-Bouafif N, Raouane M, et al. (2010) Epidemiologic and clinical features of cutaneous leishmaniasis in southeastern Tunisia. *Am J Trop Med Hyg* 83: 1034-1039.
4. Rioux JA, Lanotte G, Pratlong F (1986b) *Leishmania killicki* n.sp (Kinetoplastida: Trypanosomatidae) *Leishmania*. Taxonomie et phylogénèse. Application éco-épidémiologique. (Coll Int CNRS/INSERM, 1984). IMEEE Montpellier 139-142.
5. Ben Ismail R, Ben Rachid MS (1989) Epidemiologie des leishmanioses en Tunisie. In: *Maladies Tropicales Transmissibles*. AUPELF-UREF ed. John Libbey Eurotext, Paris, France. 73-80.
6. Jaouadi Jaouadi K, Depaquit J, Haouas N, Chaara D, Gorcii M, et al. (2012) Twenty-four new human cases of cutaneous leishmaniasis due to *Leishmania killicki* in Metlaoui, southwestern Tunisia: probable role of *Phlebotomus sergenti* in the transmission. *Acta Trop* 122: 276-283.
7. Tabbabi A, Bousslimi N, Rhim A, Aoun K, Bouratbine A (2011) First report on natural infection of *Phlebotomus sergenti* with *Leishmania promastigotes* in the cutaneous leishmaniasis focus in southeastern Tunisia. *Am J Trop Med Hyg* 85: 646-647.
8. Ghrab J, Rhim A, Bach-Hamba D, Chahed MK, Aoun K, et al. (2006) Phlebotominae (Diptera: Psychodidae) of human leishmaniasis sites in Tunisia. *Parasite* 13: 23-33.
9. Tabbabi A, Ghrab J, Aoun K, Ready PD, Bouratbine A (2011) Habitats of the sandfly vectors of *Leishmania tropica* and *L. major* in a mixed focus of cutaneous leishmaniasis in southeast Tunisia. *Acta Trop* 119: 131-137.
10. Jaouadi K, Haouas N, Chaara D, Gorcii M, Chargui N, et al. (2011) First detection of *Leishmania killicki* (Kinetoplastida, Trypanosomatidae) in *Ctenodactylus gundi* (Rodentia, Ctenodactylidae), a possible reservoir of human cutaneous leishmaniasis in Tunisia. *Parasit Vectors* 4: 159.
11. Tibayrenc M, Ben Abderrazak S, Guerrini F, Bañuls A (1993) *Leishmania* and the clonal theory of parasitic protozoa. *Arch. Inst. Pasteur Tunis* 70: 375-382.
12. Tibayrenc M, Ayala FJ (2013) How clonal are Trypanosoma and *Leishmania*? *Trends Parasitol*. 29: 264-269.
13. Rougeron V, De Meeus T, Hide M, Waleckx E, Bermudez H, et al. (2009) Extreme inbreeding in *Leishmania braziliensis*. *Proc Natl Acad Sci USA* 106: 10224-10229.
14. Rougeron V, De Meeus T, Kako Ouraga S, Hide M, Bañuls AL (2010) "Everything you always wanted to know about sex (but were afraid to ask)" in *Leishmania* after two decades of laboratory and field analyses. *PLoS Pathog* 6: e1001004.
15. Rougeron V, Bañuls AL, Carne B, Simon S, Couppié P, et al. (2011) Reproductive strategies and population structure in *Leishmania*: substantial amount of sex in *Leishmania Viannia* guyanensis. *Mol Ecol* 20: 3116-3127.
16. Rougeron V, De Meeus T, Hide M, Le Falher G, Bucheton B, et al. (2011) Multifaceted population structure and reproductive strategy in *Leishmania donovani* complex in one Sudanese village. *PLoS Negl Trop Dis* 5: e1448.
17. Kuhls K, Cupolillo E, Silva S, Schweynoch C, Boité M, et al. (2013) Population structure and evidence for both clonality and recombination among Brazilian strains of the subgenus *Leishmania (Viannia)*. *PLoS Negl Trop Dis* 7: e2490.
18. Rougeron V, De Meeus T, Bañuls AL (2015) A primer for *Leishmania* population genetic studies. *Trends Parasitol* 31: 52-59.
19. Bañuls, Guerrini F, Le Pont F, Barrera C, Espinel I, et al. (1997) Evidence for hybridization by multilocus enzyme electrophoresis and random amplified polymorphic DNA between *Leishmani braziliensis* and *Leishmania panamensis/guyanensis* in Ecuador. *J Eukaryot Microbiol* 44: 408-411.
20. Belli AA, Miles MA, Kelly JM (1994) A putative *Leishmania panamensis/Leishmania braziliensis* hybrid is a causative agent of human cutaneous leishmaniasis in Nicaragua. *Parasitol* 109: 435-442.
21. Delgado O, Cupolillo E, Bonfante-Garrido R, Silva S, Belfort E, et al. (1997) Cutaneous leishmaniasis in Venezuela caused by infection with a new hybrid between *Leishmania (Viannia) braziliensis* and *L. (V.) guyanensis*. *Mem. Inst Oswaldo Cruz* 92: 581-582.
22. Kelly JM, Law JM, Chapman CJ, Van Eys GJ, Evans DA (1991) Evidence of genetic recombination in *Leishmania*. *Mol Biochem Parasitol* 46: 253-263.
23. Nolder D, Roncal N, Davies CR, Llanos-Cuentas A, Miles MA (2007) Multiple hybrid genotypes of *Leishmania (viannia)* in a focus of mucocutaneous leishmaniasis. *Am J Trop Med Hyg* 76: 573-578.
24. Ravel C, Cortes S, Pratlong F, Morio F, Dedet J-P, et al. (2006) First report of genetic hybrids between two very divergent *Leishmania* species: *Leishmania infantum* and *Leishmania major*. *Int J Parasitol* 36: 1383-1388.
25. Odiwuor S, De Doncker S, Maes I, Dujardin JC, Van der Auwera G (2011) Natural *Leishmania donovani/Leishmania aethiopica* hybrids identified from Ethiopia. *Infect Genet Evol* 11: 2113-2118.
26. Hamad SH, Musa AM, Khalil EAG, Abebe T, Younis BM (2011) *Leishmania*: probable genetic hybrids between species in Sudanese isolates. *J Microbiol Antimicrob* 3: 142-145.
27. Cortes S, Esteves C, Mauricio I, Maia C, Cristovao JM, et al. (2012) In vitro and in vivo behaviour of sympatric *Leishmania (V.) braziliensis*, *L. (V.) peruviana* and their hybrids. *Parasitol* 139: 191-199.
28. Schwenkenbecher JM, Wirth T, Schnur LF, Jaffe CL, Schallig H, et al. (2006) Microsatellite analysis reveals genetic structure of *Leishmania tropica*. *Int J Parasitol* 36: 237-246.
29. Chargui N, Amro A, Haouas N, Schonian G, Babba H, et al. (2009) Population structure of Tunisian *Leishmania infantum* and evidence for the existence of hybrids and gene flow between genetically different populations. *Int J Parasitol* 39: 801-811.
30. Gelanew T, Kuhls K, Hurissa Z, Weldegebreal T, Hailu W, et al. (2010) Inference of population structure of *Leishmania donovani* strains isolated from different Ethiopian visceral leishmaniasis endemic areas. *PLoS Negl Trop Dis* 4: e889.
31. Gelanew T, Hailu A, Schonian G, Lewis MD, Miles MA, et al. (2014) Multilocus sequence and microsatellite identification of intra-specific hybrids and ancestor-like donors among natural Ethiopian isolates of *Leishmania donovani*. *In J Parasitol* 44: 751-757.
32. Akopyants NS, Kimblin N, Secundino N, Patrick R, Peters N, et al. (2009) Demonstration of genetic exchange during cyclical development of *Leishmania* in the sand fly vector. *Science* 324: 265-268.
33. Inbar E, Akopyants NS, Charmoy M, Romano A, Lawyer P, et al. (2013) The mating competence of geographically diverse *Leishmania major* strains in their natural and unnatural sand fly vectors. *PLoS Genet* 9: e1003672.

34. Inbar E, Debrabant A, Charmoy M, Lawyer P (2014) Cross-species genetic exchange between visceral and cutaneous strains of *Leishmania* in the sand fly vector. *Proc Natl Acad Sci USA* 111: 16808-16813.
35. Gounot M, Le Houerou HN (1985) Carte bioclimatique de la Tunisie à l'échelle 1/1000000.
36. Institut National de Statistique [En ligne].
37. Institut National de Météorologie [En ligne].
38. Ammar H, Bodas R, Ben Younes M, López S (2011) Goat breeding systems in the South of Tunisia (Tataouine) Options Méditerranéennes : Série A Séminaires Méditerranéens. 100: 283-288.
39. Tomás-Pérez M, Khaldi M, Riera C, Mozo-León D, Ribas A, et al. (2014) First report of natural infection in hedgehogs with *Leishmania major*, a possible reservoir of zoonotic cutaneous leishmaniasis in Algeria. *Acta Trop* 135: 44-49.
40. Noyes HA, Reyburn H, Bailey JW, Smith D (1998) A nested-PCR-based schizodeme method for identifying *Leishmania* kinetoplast minicircle classes directly from clinical samples and its application to the study of the epidemiology of *Leishmania tropica* in Pakistan. *J Clin Microbiol* 36: 2877-2881.
41. Schwenkenbecher JM, Frohlich C, Gehre F, Schnur LF, Schonian G (2004) Evolution and conservation of microsatellite markers for *Leishmania tropica*. *Infect Genet Evol* 4: 99-105.
42. Goudet J (2002) FSTAT: a program to estimate and test gene diversities and fixation indices. Version 2.9.3
43. Goudet J (1995) FSTAT (Version 1.2): A computer program to calculate F-statistics. *JHered* 86: 485-486.
44. Nei M, Tajima F, Tatenos Y (1983) Accuracy of estimated phylogenetic trees from molecular data. II. Gene frequency data. *J Mol Evol* 19: 153-170.
45. Tamura K, Dudley J, Nei M, Kumar S (2007) MEGA4: Molecular Evolutionary Genetics Analysis (MEGA) software version 4.0. *Mol Biol Evol* 24: 1596-1599.
46. Al-Jawabreh A, Diezmann S, Muller M, Wirth T, Schnur LF, et al. (2008) Identification of geographically distributed sub-populations of *Leishmania (Leishmania) major* by microsatellite analysis. *BMC Evol Biol* 8: 183.
47. Wright S (1978) Evolution and the genetics of natural populations, Variability within and among natural populations. University of Chicago Press, Chicago 4.
48. Rioux JA, Lanotte G, Petter F, Dereure J, Akalay O, et al. (1986a) Les Leishmanioses cutanées du bassin Méditerranéen occidental. De l'identification enzymatique à l'analyse éco-épidémiologique. L'exemple de trois "foyers", tunisien, marocain et français. Applications éco-épidémiologiques. (CollInt CNRS/INSERM, 1984). IMEEE Montpellier 365-395.
49. Anonyme Rapport annuel des Bulletins épidémiologiques de la Direction des soins de santé de base, Ministère de la Santé Publique-République Tunisienne Imprimerie officielle de la république Tunisienne 1980-2006.
50. Ben Ismail R, Ben Rachid MS (1989) Epidémiologie des leishmanioses en Tunisie. *Mal Trop Trans* 1: 73-80.
51. Harrabi M, Bettaieb J, Ghawar W, Toumi A, Zaâtour A, et al. (2015) Spatio-temporal Genetic Structuring of *Leishmania major* in Tunisia by Microsatellite Analysis. *PLoS Negl Trop Dis* 9: e0004017.
52. Jarne P, Lagoda PJ (1996) Microsatellites, from molecules to populations and back. *Trends Ecol Evol* 11: 424-429.
53. Llewellyn MS, Miles MA, Carrasco HJ, Lewis MD, Yeo M, et al. (2009) Genome-scale multilocus microsatellite typing of *Trypanosoma cruzi* discrete typing unit I reveals phylogeographic structure and specific genotypes linked to human infection. e1000410.
54. Lewis MD, Llewellyn MS, Gaunt MW, Yeo M, Carrasco HJ, et al. (2009) Flow cytometric analysis and microsatellite genotyping reveal extensive DNA content variation in *Trypanosoma cruzi* populations and expose contrasts between natural and experimental hybrids. *Int J Parasitol* 39: 1305-1317.
55. Gaunt MW, Yeo M, Frame IA, Stothard JR, Carrasco HJ, et al. (2003) Mechanism of genetic exchange in American trypanosomes. *Nature* 421: 936-939.
56. Rougeron V, De Meeus T, Hide M, Waleckx E, Dereure J, et al. (2010) A battery of 12 microsatellite markers for genetic analysis of the *Leishmania (Viannia) guyanensis* complex. *Parasitol* 137: 1879-1884.
57. Seridia N, Amroc A, Kuhlsc K, Belkaid M, Zidaned C, et al. (2008) Genetic polymorphism of Algerian *Leishmania infantum* strains revealed by multilocus microsatellite analysis. *Microbes Infect* 10: 1309e1315.
58. Gouzou E, Haralambous C, Amro A, Mentis A, Pralong F, et al. (2012) Multilocus microsatellite typing (MLMT) of strains from Turkey and Cyprus reveals a novel monophyletic *L. donovani* sensu lato group. *PLoS Negl Trop Dis* 6: e1507.
59. Krayter L, Bumb RA, Azmi K, Wuttke J, Malik MD, et al. (2014) Multilocus microsatellite typing reveals a genetic relationship but, also, genetic differences between Indian strains of *Leishmania tropica* causing cutaneous leishmaniasis and those causing visceral leishmaniasis. *Parasit Vectors* 7: 123.
60. Krayter L, Alam MZ, Rhajaoui M, Schnur LF, Schonian G (2014) Multilocus Microsatellite Typing reveals intra-focal genetic diversity among strains of *Leishmania tropica* in Chichaoua Province, Morocco. *Infect Genet Evol* 28: 233-239.
61. Ellegren H (2000) Microsatellite mutations in the germline: implications for evolutionary inference. *Trends Genet* 16: 551-558.
62. Ellegren H (2004) Microsatellites: simple sequences with complex evolution. *Nat Rev Genet* 5: 435-445.
63. Ghawar W, Toumi A, Snoussi MA, Chlif S, Zaatour A, et al. (2011) *Leishmania major* infection among *Psammomys obesus* and *Meriones shawi*: reservoirs of zoonotic cutaneous leishmaniasis in Sidi Bouzid (central Tunisia). *Vector Borne Zoonotic Dis* 11: 1561-1568.
64. Rougeron V, De Meeus T, Bañuls AL (2015) A primer for *Leishmania* population genetic studies. *Trends Parasitol* 31: 52-59.