



HAL
open science

“More Than Meets the Eye”: Cryptic Diversity and Contrasting Patterns of Host-Specificity in Feather Mites Inhabiting Seabirds

Laura M Stefan, Elena Gómez-Díaz, Sergey V Mironov, Jacob González-Solís,
Karen Mccoy

► To cite this version:

Laura M Stefan, Elena Gómez-Díaz, Sergey V Mironov, Jacob González-Solís, Karen Mccoy. “More Than Meets the Eye”: Cryptic Diversity and Contrasting Patterns of Host-Specificity in Feather Mites Inhabiting Seabirds. *Frontiers in Ecology and Evolution*, 2018, 6, pp.97. 10.3389/fevo.2018.00097 . hal-01957259

HAL Id: hal-01957259

<https://hal.umontpellier.fr/hal-01957259>

Submitted on 17 Dec 2018

HAL is a multi-disciplinary open access archive for the deposit and dissemination of scientific research documents, whether they are published or not. The documents may come from teaching and research institutions in France or abroad, or from public or private research centers.

L'archive ouverte pluridisciplinaire **HAL**, est destinée au dépôt et à la diffusion de documents scientifiques de niveau recherche, publiés ou non, émanant des établissements d'enseignement et de recherche français ou étrangers, des laboratoires publics ou privés.



“More Than Meets the Eye”: Cryptic Diversity and Contrasting Patterns of Host-Specificity in Feather Mites Inhabiting Seabirds

Laura M. Stefan^{1,2†}, Elena Gómez-Díaz^{3*†}, Sergey V. Mironov⁴, Jacob González-Solís³ and Karen D. McCoy²

¹ Departament de Biologia Evolutiva, Ecologia i Ciències Ambientals, Institut de Recerca de la Biodiversitat, Universitat de Barcelona, Barcelona, Spain, ² MIVEGEC Research Unit, UMR 5290, Centre IRD, Centre National de la Recherche Scientifique-IRD-University of Montpellier, Montpellier, France, ³ Estación Biológica de Doñana, Consejo Superior de Investigaciones Científicas, Sevilla, Spain, ⁴ Zoological Institute, Russian Academy of Sciences, Saint Petersburg, Russia

OPEN ACCESS

Edited by:

Jingchun Li,
University of Colorado Boulder,
United States

Reviewed by:

Lucia Pita,
GEOMAR Helmholtz-Zentrum für
Ozeanforschung Kiel, Germany
Gillian H. Gile,
Arizona State University, United States

*Correspondence:

Elena Gómez-Díaz
elena.gomez@csic.es

†These authors have contributed
equally to this work.

Specialty section:

This article was submitted to
Coevolution,
a section of the journal
Frontiers in Ecology and Evolution

Received: 17 April 2018

Accepted: 20 June 2018

Published: 16 July 2018

Citation:

Stefan LM, Gómez-Díaz E,
Mironov SV, González-Solís J and
McCoy KD (2018) “More Than Meets
the Eye”: Cryptic Diversity and
Contrasting Patterns of
Host-Specificity in Feather Mites
Inhabiting Seabirds.
Front. Ecol. Evol. 6:97.
doi: 10.3389/fevo.2018.00097

Feather mites are useful models for studying speciation due to their high diversity and strong degree of host specialization. However, studies to date have focused on the evolution of higher-level mite taxa while much hidden diversity likely occurs at the level of host genera and species. In this study, we examined the diversity and evolution of feather mites infesting six sympatric seabird species from six genera, breeding in the Cape Verde archipelago. We report 32 feather mite morphospecies categorized into 10 genera and three families, of which nine correspond to new, undescribed species. Molecular data corroborated morphological species descriptions, except for two morphologically-cryptic, but genetically distinct mite lineages related to *Zachvatkinia oceanodromae* and *Laminalloptes simplex*. Using these communities, we then applied a co-structure approach to test the contribution of ectosymbiont and host factors in driving feather mite evolution. Most seabird species hosted specific and unique feather mite species, even under sympatric conditions, and in general, feather mite species exhibited strong host-driven genetic structure. However, patterns of genetic differentiation were variable. That is, some mite species are more generalist than others and mite lineages/haplotypes can be shared by related seabird species. Interestingly, host-specific mites (e.g., *Zachvatkinia* spp.) tend to display much higher intra-specific diversity compared to more generalist mites (e.g., *Microspalax* and *Plicatalloptes* spp.). We discuss ectosymbiont and host life-history traits that might generate these patterns, such as host dispersal and breeding behavior and/or mite spatial and trophic specialization. Our findings highlight both the vast and largely unrecognized diversity of avian feather mites on seabirds, and the intrinsic complexity of the ecological processes underlying the evolution of these ectosymbionts.

Keywords: host-symbiont systems, cryptic species, co-structure, host-specialization, adaptation, Procellariiformes, morphology, Analgoidea

INTRODUCTION

By definition, parasites and symbionts depend almost entirely on their host for survival and transmission, and thus have evolved intricate adaptations to optimize their life cycle (de Meeùs et al., 1998; Criscione et al., 2005). The degree of host dependency is thought to determine the specificity of the interaction, and we expect to find higher species diversity and stronger patterns of host specialization with increasingly intimate interactions (Poulin and Morand, 2000; Mouillot et al., 2006). This specificity may be due to limited opportunities for dispersal and colonization of new hosts (Clayton et al., 1992; Johnson et al., 2002; Whiteman et al., 2004) or may be determined by specific adaptations to host structures (e.g., feather, hair, immune responses), such that parasites/symbionts are incapable of establishing, surviving and/or reproducing on foreign hosts (Tompkins and Clayton, 1999; Reed et al., 2000).

Comparative studies of parasite co-structures have been shown to be useful in elucidating the proximal factors underlying variation in host-specificity and patterns of parasite/symbiont genetic structure (Johnson et al., 2002; Criscione, 2008; Mazé-Guilmo et al., 2016). This approach consists in comparing population demographic or genetic structures between two or more interacting species: a parasite/symbiont inhabiting multiple host species, or multiple parasite/symbiont species on a single host. Studies of this type have previously been used to improve our understanding of avian ectoparasite diversity (Johnson et al., 2002). However, multiple host and parasite/symbiont life-history traits can influence the specificity of an interaction and the resulting population structure of the parasite/symbiont (i.e., dispersal and drift, host ecology and behavior, symbiont life-cycle complexity and demography) (Blouin et al., 1995; McCoy et al., 2003; Criscione and Blouin, 2004; Bruyndonckx et al., 2009; Mazé-Guilmo et al., 2016). This can lead to conflicting predictions on patterns of structure. In this context, communities of ecologically similar and geographically overlapping host species provide an ideal framework to investigate the proximate factors involved in the divergent evolution of their parasites and symbionts. This scenario also offers the opportunity to test parasite/symbiont structure at hierarchical spatial scales (among host individuals, populations and communities), and make predictions on selection and adaptation processes (McCoy et al., 2001). Not surprisingly, few studies have used this multi-species and multi-scale approach (but see Johnson et al., 2002; Rivera-Parra et al., 2015).

Feather mites (Acari: Astigmata: Analgoidea and Pterolichoidea) are particularly useful models to study divergence and speciation processes. They are common obligate ectosymbionts of birds, with approximately 2,500 species described from extant avian orders (Gaud and Atyeo, 1996; Proctor, 2003; Mironov and Proctor, 2008). Feather mites cannot survive in the off-host environment, and have evolved diverse habitat and trophic specializations to the host environment (Dabert and Mironov, 1999; Doña et al., 2015a; Stefan et al., 2015). This strong dependency has led to the “paradigm” that feather mites are highly host-specific, and co-evolved with their bird hosts. However, previous studies reported varying degrees

of co-phylogenetic patterns among mite groups, calling this paradigm into question (Gaud and Atyeo, 1996; Proctor, 2003; Doña et al., 2017a,b). That is, some feather mite species appear restricted to one or a few closely-related host species, others are associated with a wide range of hosts from different genera, and there have even been a couple of records of mite species infesting hosts from different avian families and orders (Doña et al., 2017b). One of the main difficulties in evaluating specificity in feather mite-host associations is the potential presence of cryptic diversity. Indeed, the morphological identification of feather mites is difficult. Immature stages of many taxa and females of closely-related species are often indistinguishable, while male morphological characterization is a laborious task even for experienced taxonomists (Doña et al., 2015b). Molecular studies hold much promise for documenting and understanding diversity in this group, but are still relatively scarce (but see Dabert et al., 2001, 2015; Klimov and OConnor, 2008; Knowles and Klimov, 2011; Štefka et al., 2011; Doña et al., 2015b).

In feather mites, divergence might be affected by either host-related factors; feather structure and dynamics (i.e., moult), defenses (i.e., preening), and/or ectosymbiont life-history traits; dispersal abilities, population size, generation time (Table 1, Proctor, 2003; Pap et al., 2005; Jovani et al., 2006; Clayton et al., 2010; Fernández-González et al., 2015). Due to the dependency of feather mites on host, as their main environment, and the assumed predominant role of vertical transmission, host factors could act as important selective forces promoting the specialization of mite traits. For example, in our previous study, we showed that competition has likely led to within-host spatial and trophic niche partitioning in two co-occurring seabird mite species (*M. brevipes* and *Z. ovata*), which in turn correlates with mite-specific morphological traits (Stefan et al., 2015). These adaptations have been hypothesized to shape mite genetic structure and divergence (Gaud and Atyeo, 1996; Dabert and Mironov, 1999; Proctor and Owens, 2000; Proctor, 2003). However, comparative studies examining multiple feather mite species and considering various host and spatial factors are currently lacking.

In the present study, we explore the diversity and genetic structure of feather mite species inhabiting the community of procellariiform seabirds of the Cape Verde Islands. These colonial seabirds represent excellent hosts for investigating divergence processes in feather mites. Seabirds are highly pelagic birds that breed in large colonies on remote oceanic islands. These colonies represent spatially discrete and hierarchical habitats, with extremely high host densities. Most seabird species show strong interannual fidelity and natal philopatry to their breeding sites, features that can favor parasite specialization and host specificity (Brooke, 2004; McCoy et al., 2013). However, seabirds are also long distance migrants and frequently breed sympatrically in mixed species colonies, which in turn can promote dispersal and host switching in their ectosymbionts.

The specific aims of our study were: (1) to characterize the diversity of feather mites inhabiting the community of seabirds breeding in the Cape Verde Archipelago; (2) to compare genetic

TABLE 1 | Key differences in life-history traits of the feather mite genera.

	<i>Zachvatkinia</i>	<i>Microspalax</i>	<i>Brephosceles</i>	<i>Plicatalloptes</i>	<i>Laminalloptes</i>	<i>Onychalloptes</i>
Micro-habitat occupied on the host body	Flight feathers	Flight feathers	Soft body feathers and wing coverts, occasionally on flight feathers	Soft body feathers and wing coverts, occasionally on flight feathers	Flight feathers	Flight feathers
Body size	Large (400–700 μm)	Small (330–360 μm)	Small (230–400 μm)	Small (330–380 μm)	Large (500–900 μm)	Relatively large (410–440 μm)
Body sclerotization	Heavy	Heavy	Weak	Weak	Heavy	Heavy
References	Mironov and Stefan, 2013	Atyeo and Gaud, 1991	Peterson, 1971	Mironov, 1996	Mironov and Stefan, 2016	Peterson and Ayeo, 1968

structure among feather mite species using different hosts in sympatric and allopatric breeding conditions, and (3) to evaluate the role of different host (breeding and nesting behavior) and mite (dispersal ability and within host habitat use) factors in generating these patterns.

MATERIALS AND METHODS

Study Species and Feather Mite Sampling

The Cape Verde Archipelago is located in the mid-Atlantic Ocean (16°N 24°W) approximately 570 km off the west coast of Africa. Mite sampling was performed on six seabird species, five from the order Procellariiformes (Cape Verde shearwater, *Calonectris edwardsii*; Boyd's shearwater, *Puffinus boydi*; Bulwer's petrel, *Bulweria bulwerii*; band-rumped storm petrel, *Hydrobates castro*; Cape Verde petrel, *Pterodroma feae*) and one from the order Phaethontiformes (the red-billed tropicbird, *Phaethon aethereus*), breeding on five islands and islets of the archipelago: Raso, Ilhéu Cima, Ilhéu Grande, Curral Velho and Fogo (Figure 1). All sampled islands harbor multiple seabird species, except Fogo, which is inhabited by a single procellariiform species. From 2004 to 2012, feather mites were collected from captured adult birds using the dust-ruffling method (Walther and Clayton, 1997) and stored in absolute ethanol for subsequent morphological identification and molecular analyses. A total of 453 birds (*C. edwardsii*: 46, *P. boydi*: 60, *B. bulwerii*: 83, *P. feae*: 76, *H. castro*: 173 and *P. aethereus*: 15) were sampled; details on the geographic locations and number of individuals sampled per locality and host species are shown in Figure 1. Main life-history characteristics of the feather mite genera and seabird hosts are detailed in Table 2.

Morphological Identifications

Initial screening of feather mites used morphological criteria to characterize the feather mite community composition on a host. Mites were cleared in lactic acid for 24 h and mounted on microscope slides in PVA medium (BioQuip Products, Rancho Dominguez, California). The slides were cured on a slidewarmer at 40°C for 4 days and then examined using a Leica DM 5000B light microscope with differential interference contrast (DIC) illumination. Mites were identified using the identification keys for bonnetellines (Mironov, 1989a,b, 2000), xolalgids (Dabert and Ehrnsberger, 1991; Mironov and Palma, 2006) and alloptids (Peterson and Ayeo, 1968; Peterson, 1971; Ayeo and Gaud,

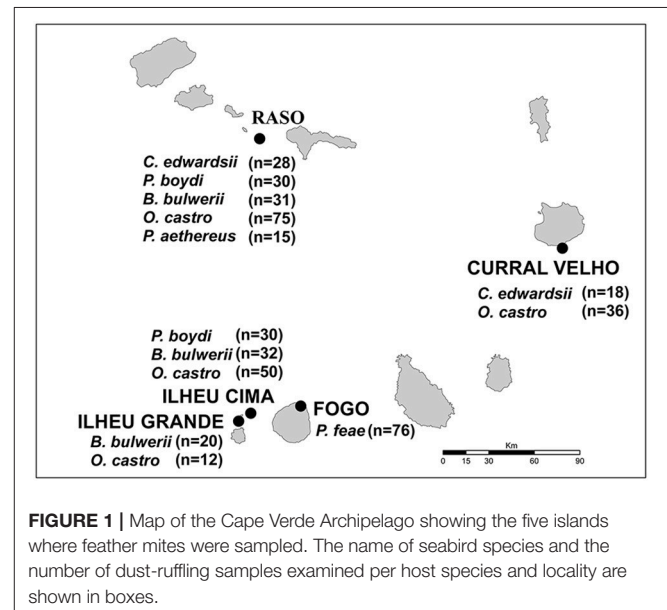


FIGURE 1 | Map of the Cape Verde Archipelago showing the five islands where feather mites were sampled. The name of seabird species and the number of dust-ruffling samples examined per host species and locality are shown in boxes.

1991; Mironov, 1996; Mironov and Stefan, 2016). Feather mite specimens of each identified morphospecies are deposited in the Zoological Institute of the Russian Academy of Sciences, Saint Petersburg, Russia (ZISP) and in the Museum of the Faculty of Biology (Centro de Recursos de Biodiversidad Animal), University of Barcelona, Spain.

DNA Isolation, Amplification and Sequencing

When possible, five specimens of each feather mite morphospecies per seabird host and island and from different host individuals were selected for the molecular analyses. Total numbers of mites were: 50 specimens from the genus *Zachvatkinia* (five species), 37 from the genus *Microspalax* (four species), 66 from the genus *Brephosceles* (nine species), 19 from the genus *Plicatalloptes* (one species), 13 from the genus *Laminalloptes* (three species) and 5 specimens from *Onychalloptes* (one species) (Table S1). The mite genera: *Rhinozachvatkinia*, *Promegnina*, *Ingrassia* and *Opetiopoda*, were not included in the molecular analyses due either to low sample size and/or failure to obtain DNA sequences.

TABLE 2 | Key differences in life-history traits of the seabird host species.

	Cape Verde shearwater	Boyd's shearwater	Bulwer's petrel	Cape Verde petrel	Band-rumped storm-petrel	Red-billed tropicbird
Mixed colonies	Yes, with Boyd's shearwater (but differ in their breeding season) and Bulwer's petrel	Yes, with Cape Verde shearwater, Bulwer's petrel and Band-rumped storm-petrel	Yes, with Cape Verde shearwater, Boyd's shearwater and Band-rumped storm-petrel	No	Yes, with Cape Verde shearwater, Boyd's shearwater and Bulwer's petrel	No
Shared nests	No	Yes, with Bulwer's petrel and Band-rumped storm-petrel	Yes, with Boyd's shearwater and Band-rumped storm-petrel	No	Yes, with Boyd's shearwater and Bulwer's petrel	No
Nesting area	Hollows in cliffs and offshore rocks, and under large boulders	Burrows in soft soil or in rocky cavities	Crevices or under rocks at the base of cliffs	Burrows between rocks on remote cliffs and steep slopes at more than 800 m of altitude	Burrows or rock crevices and sandy soil	Rocky crevices, or on the ground, preferentially on cliffs
Breeding season	March-October	January-June	April-October	November-May	Protracted breeding period (December-June)	All year, but with reproduction peak reached between January and March
Migratory distance	Medium	Medium	Medium	Resident	Medium	Resident?
Wintering areas	Between the Brazil and Falklands current, in front of the coast of southern Brazil and Uruguay	Short migrations to the Central Atlantic; some individuals remain around the Cape Verde Islands	Mid-equatorial Atlantic Ocean, north of the Saint Peter and Saint Paul archipelago	Remain around the breeding area	Unclear if undertake systematic migrations; may migrate to the western Atlantic	Remain around the breeding area
References	González-Solis et al., 2009	Zajkova et al., 2017	Ramos et al., 2015	Ramos et al., 2016; Militão et al., 2017	Monteiro and Furness, 1998	Furness and Monteiro, 1995

DNA extractions were performed on each individual mite using a DNeasy Tissue Kit (Qiagen, Valencia, CA, USA) and the non-destructive method described by Dabert et al. (2008). After DNA extraction, mite exoskeletons were recovered, mounted on microslides, re-identified morphologically and kept as reference vouchers. Partial sequences of two mitochondrial genes, 12S rRNA (12S) and 16S rRNA (16S), were amplified for each feather mite using the following primers: SR-J-14199 (5'-TACTATGTTACGACTTAT-3') and SR-N-14594 (5'-AAACTAGGATTAGATACCC-3') for the 12S gene (Kambhampati and Smith, 1995); and 16SA2 (5'-TTTAATTGGTTACTTGTATGAATG-3') and 16C2 (5'-CGCTGTTATCCCTAGAGTAT-3') for the 16S gene (Dabert et al., 2001). Amplifications were carried out in a total volume of 25 μ l containing 2.5 μ l 10x reaction buffer with 15 mM MgCl₂ (Roche Diagnostics), 2 mM MgCl₂, 0.2 mM of each dNTP, 0.4 μ M of each primer, 1.25 U *Taq* DNA polymerase (Roche Diagnostics) and 2 μ l of DNA template. Amplification conditions for the 12S rRNA gene consisted of an initial step of 2 min at 94°C, followed by 10 cycles of denaturation at 94°C for 30 sec, annealing at 40°C for 30 sec, and extension at 68°C for 1 min, and 35 cycles of denaturation at 94°C for 30 sec, annealing at 43°C for 30 sec, and extension at 68°C for 1 min, with a final step of 5 min at 72°C. For the 16S rRNA gene, the PCR conditions followed Black and Piesman (1994). Amplification products were separated by electrophoresis in a 2% agarose gel and visualized under UV light. Successful amplifications were sent for sequencing to Beckman Coulter Genomics (France). Only mite specimens with complete sequence information for the two mitochondrial genes were included in the analyses. DNA sequences were checked and edited using Bioedit version 7.0.5.3 (Hall, 1999) and all variable sites were confirmed by visual inspection of the chromatograms. Sequences were aligned for each gene independently using MAFFT version 7, with default parameters.

Molecular Diversity and Species Delimitation

We tested for neutrality for each gene of each mite genus using Tajima's D test included in DNASP v.5 (Librado and Rozas, 2009). Genetic statistics (number of polymorphic sites, number of haplotypes, nucleotide and haplotype diversity) for each gene and morphospecies/genetic lineage were assessed using DNASP v.5. Mean genetic distances within and between morphospecies/genetic lineages were calculated with MEGA 4.1 using Kimura's 2-parameter (K2P) distance model (Tamura et al., 2007).

Following the initial morphological characterization of all mites and to control for the potential presence of cryptic species, we conducted two different species delimitation analyses on the molecular data. First, we applied the general mixed Yule-coalescent (GMYC) method (Pons et al., 2006). This method infers an ultrametric tree and, based on this topology, attempts to detect transitions in the tree where branching patterns switch from being attributed to speciation (one lineage per species) to being attributed to an intra-species coalescent process (multiple

lineages per species). The GMYC analysis was conducted using the "splits" package (Species Limits by Threshold Statistics) in R version 3.0.3. The single threshold method was applied in order to find the Maximum Likelihood solution of the GMYC model. The ultrametric tree was generated using BEAST v.1.6.2 (Drummond and Rambaut, 2007) after removing identical sequences. In order to choose the most appropriate tree prior, we considered different parameter combinations: Yule vs. coalescent tree priors which refers to the model used to express the expected branching pattern on the tree, and strict clock vs. relaxed uncorrelated lognormal clock, which is compared to determine the model of molecular evolution. Secondly, for each mite genus, we inferred haplotype networks using the concatenated sequences of the two mitochondrial genes to which we applied the statistical parsimony algorithm implemented in TCS version 1.21 (Clement et al., 2000). This method partitions the data into independent haplotype sub-networks connected by changes that are non-homoplastic with a 95% probability (Templeton, 2001). Although this threshold does not necessarily correspond to species boundaries, the algorithm has been shown to be useful in separating independent lineages, which in most cases correspond to good species (Hart and Sunday, 2007).

Genetic Structure

To examine the genetic structure of the mites, we first mapped host and geographic information onto the mitochondrial haplotype network of each mite species. In general, each host species harbored its own set of feather mite species, except for three mite species (*M. brevipes*, *B. puffini*, and *Plicatalloptes* sp.1) shared by the Cape Verde and Boyd's shearwaters (see results). For these mite species, we evaluated the partitioning of genetic variation within and between feather mite populations (in this case at host species and host individual levels), using one-way analyses of molecular variance (AMOVA) in ARLEQUIN version 3.5 and determined significance using 10,000 permutations. We also calculated overall and pairwise estimates of F_{ST} in ARLEQUIN (Excoffier and Lischer, 2010) and then examined genetic structure over geographic space. We ran AMOVA analyses, partitioning genetic variation among islands and among individuals within islands for each mite species that occurred on at least two islands.

RESULTS

Morphological Diversity of Feather Mites

Thirty-two feather mite species belonging to ten genera and three families were found on the six studied seabird species based only on morphological criteria: *Zachvatkinia*, *Rhinozachvatkinia*, *Promegninia* (Avenzoariidae), *Microspalax*, *Brephosceles*, *Plicatalloptes*, *Laminalloptes*, *Onychalloptes* (Alloptidae), *Ingrassia*, and *Opetiopoda* (Xolalgidae) (Table 3). Many of these genera, such as *Zachvatkinia*, *Microspalax*, *Brephosceles* and *Ingrassia*, co-occurred in multiple seabird species in the Cape Verde Islands, whereas the genera *Rhinozachvatkinia*, *Promegninia*, *Opetiopoda*, *Plicatalloptes*, *Laminalloptes*, and *Onychalloptes* were restricted to one or two host species

TABLE 3 | Feather mite richness for each seabird species breeding in the Cape Verde Islands.

	Cape Verde shearwater (46)	Boyd's Shearwater (60)	Bulwer's petrel (83)	Cape Verde petrel (76)	Band-rumped storm-petrel (173)	Red-billed tropicbird (15)	Locality
Fam. Avenzoariidae							
<i>Zachvatkinia ovata</i>	+ (29)						Raso, Curral Velho
Z. sp.1		+ (23)					Raso, Ilhéu Cima
Z. sp.2			+ (24)				Raso, Ilhéu Cima, Ilhéu Grande
<i>Z. oceanodromae</i>					+ (29)		Raso, Curral Velho, Ilhéu Cima, Ilhéu Grande
Z. sp.3				+ (10)			Fogo
<i>Rhinozachvatkinia calonectris</i>	+ (8)						Raso, Curral Velho
<i>Promegninia calonectris</i>	+ (1)						Raso
<i>P. bulweriae</i>			+ (2)				Raso, Ilhéu Cima
Fam. Alloptidae							
<i>Microspalax brevipes</i>	+ (37)	+ (13)					Raso, Curral Velho, Ilhéu Cima
<i>M. bulweriae</i>			+ (9)				Raso, Ilhéu Cima, Ilhéu Grande
<i>M. cymochoreae</i>					+ (12)		Raso, Curral Velho, Ilhéu Cima
<i>M. pterodromae</i>				+ (1)			Fogo
<i>Brephosceles puffini</i>	+ (27)	+ (22)					Raso, Curral Velho, Ilhéu Cima
B. sp.1			+ (29)				Raso, Ilhéu Cima, Ilhéu Grande
B. sp.2			+ (4)				Raso, Ilhéu Cima
B. sp.3			+ (2)				Ilhéu Cima
B. sp.4	+ (5)						Raso
B. sp.5		+ (3)					Raso
<i>B. decapus</i>					+ (42)		Raso, Curral Velho
<i>B. lanceolatus</i>					+ (12)		Raso, Curral Velho, Ilhéu Cima
<i>B. disjunctus</i>				+ (20)			Fogo
<i>Plicatalloptes</i> sp.1	+ (25)	+ (12)					Raso, Curral Velho, Ilhéu Cima
<i>Laminalloptes phaetontis</i>						+ (12)	Raso
<i>L. minor</i>						+ (12)	Raso
<i>L. simplex</i>						+ (11)	Raso
<i>Onychalloptes microphaeton</i>						+ (14)	Raso
Fam. Xolalgidae							
<i>Ingrassia calonectris</i>	+ (30)						Raso, Curral Velho
<i>I. dubinini</i>		+ (23)					Raso, Ilhéu Cima
<i>I. micronota</i>			+ (26)				Raso, Ilhéu Cima, Ilhéu Grande
<i>I. oceanodromae</i>					+ (59)		Raso, Curral Velho, Ilhéu Cima
<i>I. aequinoctialis</i>						+ (9)	Raso
<i>Opetiopoda bulweriae</i>			+ (4)				Raso
Total number of mite species	8	6	8	3	5	5	

The number of birds sampled for each species is indicated. The number of birds on which a given mite species was found is indicated in brackets preceded by the "+" symbol.

(Table 3). The procellariiform seabirds harbored distinct acarofauna compared to the phaethontiform species, being *Ingrassia* the only mite genus shared by the two avian orders.

Nine of the recorded mite species corresponded to new undescribed species, and six were recently described species (*Rhinozachvatkinia calonectris*, *Promegninia calonectris*, *Promegninia bulweriae*, *Opetiopoda bulweriae*, *Ingrassia calonectris*, and *Ingrassia micronota*) (Stefan et al., 2013, 2014; Mironov et al., 2015). The Cape Verde shearwater and

Bulwer's petrel hosted the greatest number of feather mite species (eight each) with the highest number of new species (three for the Cape Verde shearwater and four for Bulwer's petrel), whereas the Cape Verde petrel harbored the lowest mite richness with only three species found. Except for three feather mite species (*M. brevipes*, *B. puffini*, and *Plicatalloptes* sp.1) which were shared by Cape Verde and Boyd's shearwaters, each host species harbored its own feather mite assembly (Table 3).

Molecular Diversity and Structure of Feather Mites

In total, 190 sequences for each of the two mitochondrial genes were obtained for 23 out of the 32 morphologically distinct species (Table S1).

The number of haplotypes per mite species ranged from 1 to 11 for the 12S gene and from 1 to 6 for the 16S gene. Haplotype diversity ranged from 0 to 1 for both genes, while nucleotide diversity ranged from 0 to 0.0051 once cryptic lineages were accounted for (Table S2). No deviation from neutrality was found for any mite genus or gene (12S and 16S) (all $P > 0.05$), except for the 12S data of *Plicatalloptes* sp.1, which may indicate purifying selection or population expansion (Tajima's $D = -1.87$; $P < 0.05$). A Tajima's test could not be computed for the 16S data of *Onychaloptes* due to a lack of polymorphism.

Sequence divergence between feather mite morphospecies within each genus are shown in Table S3. Mean divergences ranged from 3.7% (*Brephosceles*) to 24.9% (*Laminalloptes*) for the 12S, and from 1.9% (*Brephosceles*) to 32.2% (*Laminalloptes*) for the 16S gene (Table S3). Mean genetic distances between mite individuals within morphospecies ranged from 0 to 0.7% for all species from all genera and for both genes, except for *Z. oceanodromae* (1%, SE = 0.002 for 12S gene and 1.5%, SE = 0.006 for 16S gene; bootstrap 1,000 replicates) and *L. simplex* (2.8%, SE = 0.005 for 12S gene and 4.4%, SE = 0.010 for 16S gene, respectively; bootstrap 1,000 replicates), indicating a high degree of intra-specific diversity and the presence of putative distinct genetic lineages within these two morphospecies (Table S2). Sequence divergence between the genetic lineages of *Z. oceanodromae* A and *Z. oceanodromae* B was 6.6% for the 12S gene and 7% for the 16S gene, whereas between *L. simplex* A and *L. simplex* B it was 11.2 and 16.4%, respectively for the two genes.

The GMYC analysis suggested the presence of 26 putative mite species within Cape Verde Islands when considering the Yule-strict clock combination [$N_{\text{GMYC}} = 29$ (CI 28–30), $L_{\text{GMYC}} = 732.49$; where N = number of species including the 3 outgroups and L = likelihood of GMYC model]. For the coalescent strict clock, the GMYC analysis resulted in 25 putative mite species [$N_{\text{GMYC}} = 28$ (CI 28–30), $L_{\text{GMYC}} = 738.21$] (Figure S1). For both models (Yule and coalescent), the GMYC method indicated that there are two species within *Z. oceanodromae* and two within *L. simplex*. The only disagreement between the two models used to delimit species concerned *M. brevipes*, which was partitioned into two distinct species corresponding to different host species (Cape Verde and Boyd's shearwaters) for the Yule-strict clock combination. Neither the coalescent strict clock nor the TCS network analysis (see below) recognized these as separate lineages. In favor of this split, the Bayes factor of the Yule prior with a strict clock gave a slightly better fit than a coalescent prior (Yule: -5755.31 , coalescent: -5741.33).

The mtDNA networks revealed high levels of haplotypic diversity, with 102 distinct haplotypes, based on the concatenated 12S and 16S sequences. These sequences grouped into 25 different networks, which agrees with the 25 genetic lineages

identified by the GMYC approach. Furthermore, we a high degree of correspondence between morphological and molecular data (Figures 2A–F). Again, the only exceptions were *Z. oceanodromae* from band-rumped storm petrels and *L. simplex* from red-billed tropicbirds for which two different sub-networks were found (*Z. oceanodromae* A and B; Figure 2A and *L. simplex* A and B; Figure 2E).

As outlined above, clear patterns of host-associated genetic structure were apparent in most of the feather mite genera analyzed. Twenty out of the 23 mite species examined showed a one-host one-mite species pattern (Figure 2). *M. brevipes*, *B. puffini*, and *Plicatalloptes* sp.1 were shared by two related hosts, Cape Verde and Boyd's shearwaters (Figure 2). The two shearwater hosts share breeding habitats, but differ in their breeding phenology (Table 2). In accordance with this temporal isolation, AMOVA results showed significant host-associated genetic differentiation for *M. brevipes* ($\Phi = 0.669$, $P = 0$) and *B. puffini* ($\Phi = 0.225$, $P = 0.010$) (Table 4). This was not the case for *Plicatalloptes* sp.1 ($\Phi = 0.048$, $P = 0.069$), in which genetic structure between host species was not statistically significant. In contrast, when testing for the effect of geography, the TCS parsimony networks showed only weak spatial genetic structure in the feather mite species that occurred on more than one island population (Figures 3A–D). Indeed, almost all mite species shared haplotypes among islands. Furthermore, the AMOVA analyses with island as a grouping factor supported this observation, with only *Zachvatkinia* sp.1 and *M. brevipes* showing a tendency for island-related genetic structure (Table S4).

DISCUSSION

In studying the diversity of feather mites on procellariiform and phaethontiform seabirds from Cape Verde, we uncovered a unique mite fauna composed of 32 morphologically distinct species belonging to ten genera, of which nine are new, undescribed species. All seabird species examined in this study hosted at least three feather mite species, with Cape Verde shearwaters and Bulwer's petrels presenting the richest mite communities (eight species each). This number is in line with mite richness documented in other groups of birds, including seabirds (Fitzpatrick and Threlfall, 1977; Doña et al., 2016). For instance, other procellariiform seabirds are known to harbor more than one mite species: *Puffinus gravis* (nine), *Oceanodroma leucorhoa* (eight), and *Puffinus tenuirostris* (seven) (Bourgeois and Threlfall, 1979; Doña et al., 2016).

The host-feather mite associations found in the present study are largely in agreement with previous records in the literature (Peterson, 1971; Mironov, 1989a; Atyeo and Gaud, 1991; Stefan et al., 2013; Mironov and Stefan, 2016), although some inconsistencies were detected. First, *Z. ovata* was previously reported from *Calonectris diomedea borealis* and different species of *Puffinus* shearwaters (Mironov, 1989a). Our study clearly shows that these two host genera harbor distinct species of *Zachvatkinia*. Another disagreement concerns *Brephosceles puffini*, previously known only from *Puffinus* hosts (Peterson,

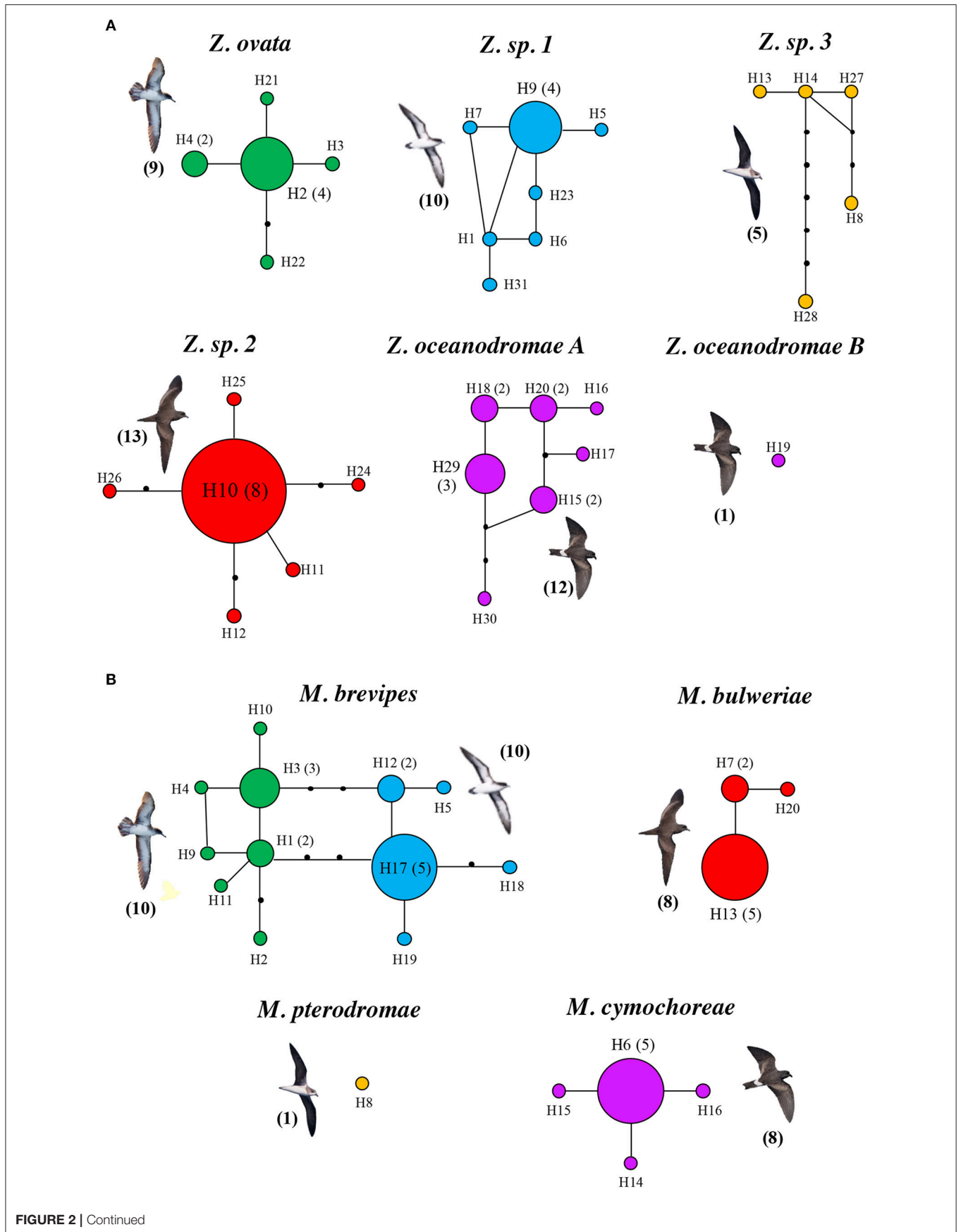


FIGURE 2 | Continued

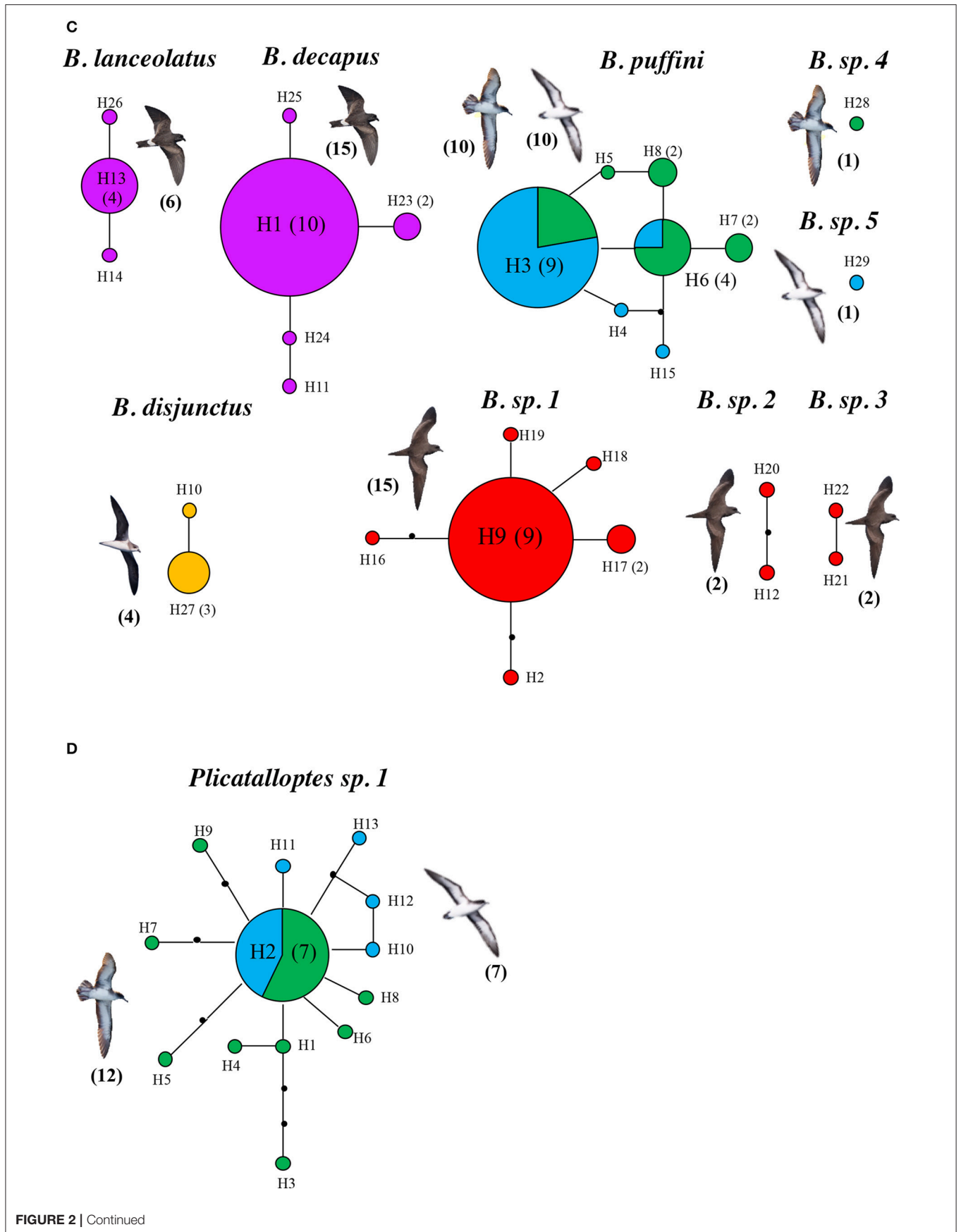


FIGURE 2 | Continued

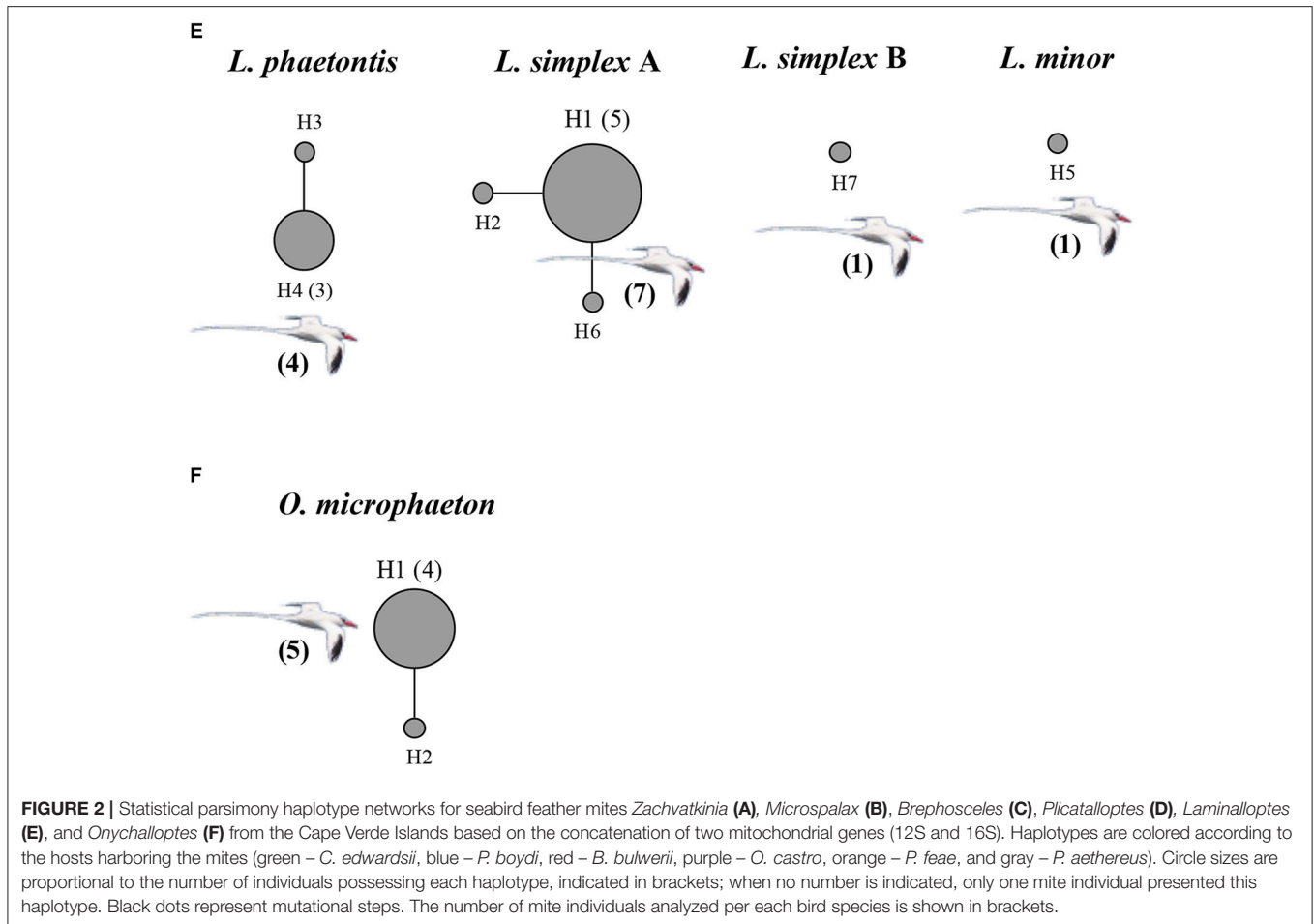


TABLE 4 | Analysis of molecular variance (AMOVA) on mitochondrial haplotypes partitioned by seabird host.

Species	Partition	d.f.	Sum of squares	% Variation	Φ_{ST}	P
<i>Microspalax brevipes</i>	Among-host populations	1	15.800	66.91	0.669	0
	Within-host populations	18	13.400	33.09	–	–
<i>Brephosceles puffini</i>	Among-host populations	1	2.150	22.54	0.225	0.010
	Within-host populations	18	9.900	77.46	–	–
<i>Plicatalloptes sp.1</i>	Among-host populations	1	1.503	4.82	0.048	0.069
	Within-host populations	17	17.655	95.18	–	–

This analysis was conducted on the three feather mite species that are shared by Cape Verde shearwater and Boyd's shearwater.

1971); the present study revealed that *B. puffini* also inhabits *Calonectris* shearwaters. This does not seem to be a spurious result given that *B. puffini* specimens were found in various localities in which the two seabird genera (*Calonectris* and *Puffinus*) are not sympatric.

One of the difficulties in measuring diversity and in studying host-parasite associations is the presence of cryptic species. Cryptic speciation appears to be common in ectosymbionts, such as lice (Malenke et al., 2009) and mites (Miller et al., 2013; Doña et al., 2015b). The strong host-associated adaptive pressures on these ectosymbionts can promote convergence in morphology, rendering traditional morphological methods

insufficient for species identification (Doña et al., 2015b). To address this problem, we integrated morphological and molecular data. We found that, in general, morphospecies correlated well with genetic lineages, with the exception of two species (*Zachvatkinia oceanodromae*, *Laminalloptes simplex*). Similar examples of cases of hidden diversity were found in the literature in avian skin (Whiteman et al., 2006), nasal and feather mites (Doña et al., 2015b). In the case of *Z. oceanodromae*, some small morphological differences could be detected on secondary examination (i.e., slightly shorter incision in the interlobar membrane; S. Mironov personal observation). Therefore, in order to confirm the existence of the two cryptic species found

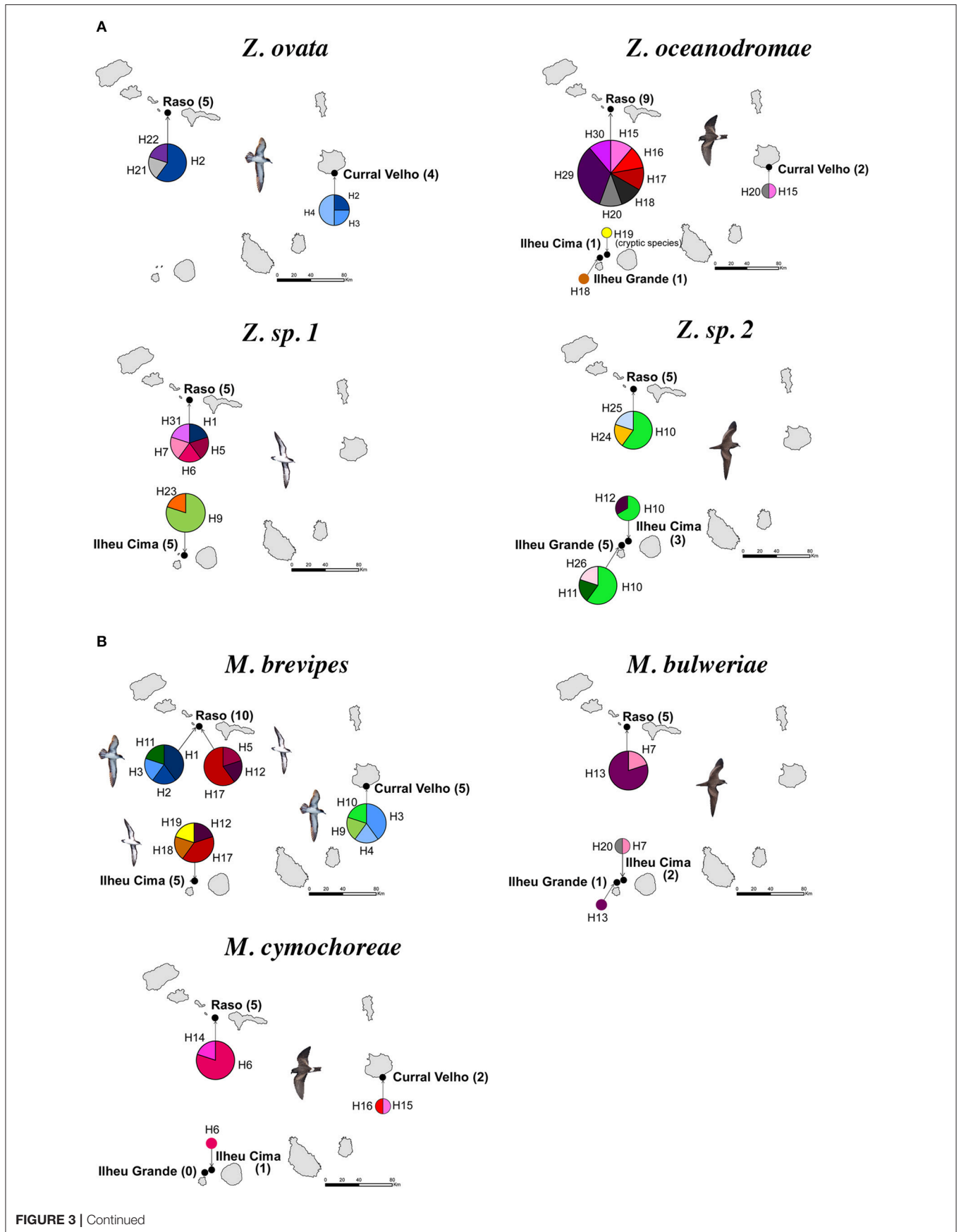
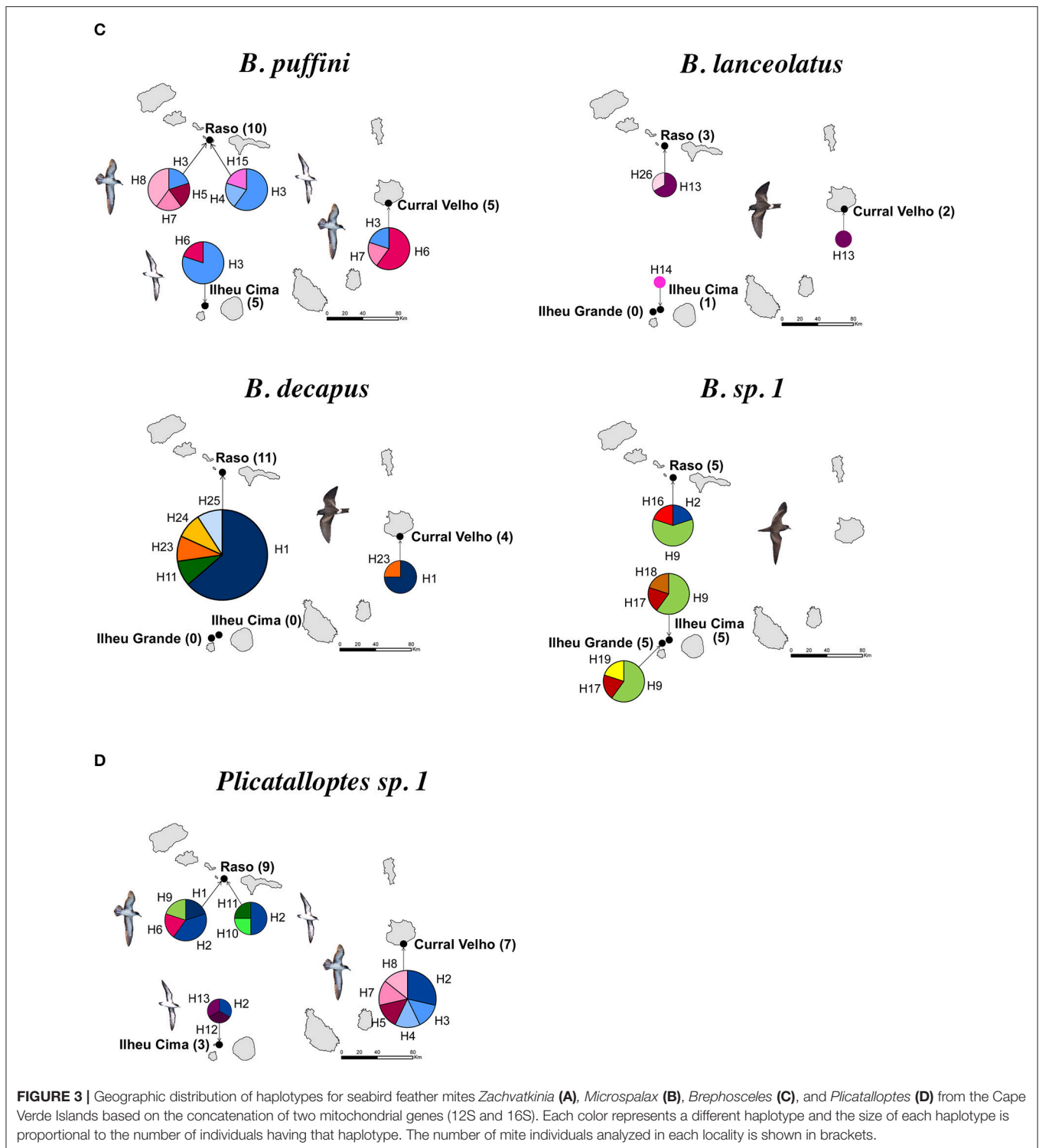


FIGURE 3 | Continued



in the present study, more specimens belonging to each species should be collected and redescribed using multilocus genetic data and more quantitative morphological methods (e.g., geometric morphometrics).

Hosts are the most important driving force generating diversity in symbionts due to the selective pressure imposed

by the host environment, i.e. immune and behavioral responses (Magalhães et al., 2007). This selection can result in host adaptation, which in turn, can promote specialization and diversification (Gandon and Michalakis, 2002; Lajeunesse and Forbes, 2002; Malenke et al., 2009). In agreement with the hypothesis of host-driven diversification, this study revealed

that most seabird species hosted specific and unique mite species, even under sympatry. When mite species were shared, it was between phylogenetically related seabird host taxa (“clade-limited switches”) (Krasnov et al., 2010; Poulin, 2010; Poulin et al., 2011; Braga et al., 2015). For example, *Zachvatkinia*, *Microspalax*, *Brephosceles* and *Plicatalloptes*, all occurred on multiple host species, but with evident host-associated genetic structure that conforms with the high degree of trophic, spatial and morphological specialization reported in previous studies (Dabert and Mironov, 1999; Dabert et al., 2015; Stefan et al., 2015). Our findings are also in agreement with previous co-phylogenetic studies reporting that host switching is infrequent and likely plays a relatively minor role in the diversification of these ectosymbionts (Doña et al., 2016, 2017b).

Despite the high level of host-specificity, we observed differences in host-driven feather mite genetic structuring. That is, *Zachvatkinia* appear highly genetically structured by the host. In contrast, *M. brevipes* and *B. puffini* occur in two related shearwater species but with low host-associated genetic divergence. More extreme is the case of *Plicatalloptes* sp.1 which showed no genetic differentiation among mites inhabiting each of the two host species. Accumulating evidence suggests that multiple parasite and host life-history traits are important in determining the adaptative dynamics and population structure of parasites (Mazé-Guilmo et al., 2016). In this context, studying multiple host-symbiont/parasite associations, where hosts and symbionts/parasites differ in key characteristics such as dispersal and behavior, can provide insight on the factors that affect their microevolutionary dynamics. In lice, differences in specific habitat use within the host body has been shown to alter patterns of among-host dispersal, with body lice having reduced dispersal potential compared to wing lice (Johnson et al., 2002). In the case of feather mites, ecological characteristics linked to differential dispersal abilities between wing and body mites are not congruent with host-associated patterns of structure. *Zachvatkinia* and *Microspalax* are large vane-dwelling wing mites with heavily sclerotized bodies that occupy exposed areas along the ventral surfaces of flight feathers (Stefan et al., 2015), features that should favor dispersal. In contrast, *Brephosceles* and *Plicatalloptes* are small bodied mites with weakly sclerotized bodies that occupy more protected areas, wing coverts and soft body feathers, and are less mobile (Peterson, 1971; Bourgeois and Threlfall, 1979; Dabert et al., 2015; L. Stefan personal observations). These incoherencies suggest that successful host-switching in this group may depend more on host behavior and ecology than mite life histories *per se*.

Due to high host-specificity, host dispersal is generally assumed to drive parasite dispersal, such that their genetic structure is expected to conform to that of their hosts (McCoy et al., 2003; Barrett et al., 2008). However, empirical studies show contrasting results in relation to the degree of co-structure; some parasites mirroring host spatial genetic structuring whereas others appear completely undifferentiated (Mazé-Guilmo et al., 2016). Dispersal opportunities in otherwise highly host-specific mite lineages may arise by the fact that phylogenetically related seabird host species breed sympatrically and may even share nest sites, promoting host switching (i.e., Cape Verde and Boyd's

shearwaters). However, in the case of the shearwaters in Cape Verde, although they share habitat, they are often temporally isolated during the breeding season. Temporal segregation should “a priori” prevent host-switching given that feather mites are not able to live for long periods outside of the host body (Dubinin, 1951; Proctor, 2003; Doña et al., 2017c). It could be that feather mites survive in molted feathers in the nest substrate for relatively long periods of time, but this explanation seems unlikely given the escape behavior of feather mites during molting (Jovani and Serrano, 2001). That is, it has been shown that feather mites tend to avoid the feathers destined to be molted and leave these feathers shortly before they are dropped (Pap et al., 2005).

In contrast to strong host-associated structure, we found little geographic differentiation between mites of different islands. Direct physical contact among hosts of the same species could occur during mating and chick rearing throughout the breeding period. Mite dispersal between host populations could also be favored by juvenile birds that prospect among breeding colonies, or adult birds that change their breeding locality (Boulinier et al., 2016), or even by phoresy (Harbison et al., 2009). This is supported by previous population genetic studies of the seabird hosts that show weak genetic structuring at local geographic scales and high between island population gene flow (Gómez-Díaz et al., 2006, 2009; Friesen et al., 2007). Regardless of the specific mechanism of dispersal, the weak structure found at relatively large geographic scales suggest that mite dispersal regularly occurs among host populations and occasionally between certain seabird host species, i.e., host switch. This supports the hypothesis that host-associated selection, rather than simple isolation, is likely responsible for the strong patterns of host-associated divergence in these ectosymbionts. Variation among some mite species in genetic diversity and geographic structure may then arise through interspecific differences in generation times and population sizes that lead, in turn, to a variable impact of genetic drift (Johnson et al., 2003). Regular population bottlenecks have been proposed to explain strong structure in contact-transmitted wing mites of social bats (Bruyndonckx et al., 2009). Unfortunately, with the genetic markers at hand and the limited knowledge on the biology of seabird mites, the drift hypothesis is difficult to test in our system. At present, we only have mite abundance data on individual hosts for two species, *M. brevipes* and *Z. ovata*, and both species show similar infestation levels (Stefan et al., 2015). Mitochondrial DNA is typically useful to resolve taxonomic uncertainties, but records few traces of contemporary events. Future studies employing more powerful SNP or microsatellite markers, combined with temporal samples on the same bird host will be needed to explore these alternatives more in-depth.

Overall, this study highlights the rich and diverse fauna of feather mites exploiting seabirds. Our morphological and molecular data have revealed the presence of nine new species and suggest the existence of at least two putative cryptic species. Our findings also reinforce the hypothesis that host specialization is a major driver of parasite/symbiont diversification with infrequent host-switching between related

seabird host species. Different degrees of host-associated genetic structure among mite species may reflect different transmission probabilities and/or genetic drift effects linked to mite life-history traits and population dynamics. Detailed examination of specific parasite/symbiont traits associated with host specificity combined with field-transplantation experiments, and temporal population genetic studies are now called for to test the relative roles of isolation and adaptation in generating mite diversity.

AVAILABILITY OF DATA AND MATERIALS

Sequence data is available at GenBank: Accession nos. KX372354-KX372371; MH077590-MH077951

ETHICS STATEMENT

Bird captures and mite sampling were performed in accordance with good animal practices as defined by current European legislation and under permission from the government authorities of Cape Verde.

AUTHOR CONTRIBUTIONS

EG-D, LS, JG-S, and KM conceived and designed the study. EG-D and JG-S collected data. LS performed the laboratory work. LS performed data analysis with input from EG-D, SM, and KM. EG-D, JG-S, and KM contributed to the interpretation of the results. EG-D, LS, and KM wrote the manuscript with input from JG-S and SM. EG-D, JG-S, and KM supervised the study.

REFERENCES

- Ateyo, W. T., and Gaud, J. (1991). Microspalacinae, a new subfamily of the feather mite family Alloptidae Gaud (Acarina, Analgoidea). *Folia Parasitol.* 38, 327–343.
- Barrett, L. G., Thrall, P. H., Burdon, J. J., and Linde, C. C. (2008). Life history determines genetic structure and evolutionary potential of host-parasite interactions. *Trends Ecol. Evol.* 23, 678–685. doi: 10.1016/j.tree.2008.06.017
- Black, IV. W. C., and Piesman, J. (1994). Phylogeny of hard- and soft-tick taxa (Acari: Ixodida) based on mitochondrial 16S rDNA sequences. *Proc. Natl. Acad. Sci.* 91, 10034–10038. doi: 10.1073/pnas.91.21.10034
- Blouin, M. S., Yowell, C. A., Courtney, C. H., and Dame, J. B. (1995). Host movement and the genetic structure of populations of parasitic nematodes. *Genetics* 141, 1007–1014.
- Boulinier, T., Kada, S., Ponchon, A., Dupraz, M., Dietrich, M., Gamble, A., et al. (2016). Migration, prospecting, dispersal? What host movement matters for infectious agent circulation? *Integr. Comp. Biol.* 56, 330–342. doi: 10.1093/icb/icw015
- Bourgeois, C. E., and Threlfall, W. (1979). Parasites of the greater shearwater (*Puffinus gravis*) from Newfoundland, Canada. *Can. J. Zool.* 57, 1355–1357. doi: 10.1139/z79-176
- Braga, M. P., Razzolini, E., and Boeger, W. A. (2015). Drivers of parasite sharing among Neotropical freshwater fishes. *J. Anim. Ecol.* 84, 487–497. doi: 10.1111/1365-2656.12298
- Brooke, M. (2004). *Albatrosses and Petrels Across The World*. Oxford, UK: Oxford University Press.
- Bruyndonckx, N., Dubey, S., Ruedi, M., and Christe, P. (2009). Molecular cophylogenetic relationships between European bats and their ectoparasitic

KM and JG-S provided infrastructures and funds to conduct the study. All the authors revised the manuscript and approved the final version.

ACKNOWLEDGMENTS

We thank T. Militão, R. Ramos, P. Rodrigues, J.M. de los Reyes, P. Lopez., L. F. López-Jurado, E. Vendrell, S. Martins, A. Rendall, M. Brooke and H. Dinis for their help during fieldwork at different stages and mite sample collection and Valérie Noël for molecular assistance. Permits to capture and examine live procellariiform birds were issued by Direção Geral do Ambiente and the Instituto Nacional de Investigação e Desenvolvimento Agrário from Cape Verde. The present investigation was performed during the postgraduate project of LMS supported by the University of Barcelona. EG-D was supported by JdC and RyC contracts from the MINECO, Spain. Financial support was provided by CGL2009-11278/BOS from the Ministerio de Ciencia e Innovación (Spain) and Fondos FEDER for LMS, by French ANR project ESPEVEC (ANR-13-BSV7-0018) and the CNRS, France for KM and by a Marie Curie Reintegration Grant to EG-D (ERG-2010-276838).

SUPPLEMENTARY MATERIAL

The Supplementary Material for this article can be found online at: <https://www.frontiersin.org/articles/10.3389/fevo.2018.00097/full#supplementary-material>

- mites (Acari, Spinturnicidae). *Mol. Phylogenet. Evol.* 51, 227–237. doi: 10.1016/j.ympev.2009.02.005
- Clayton, D. H., Gregory, R. D., and Price, R. D. (1992). Comparative ecology of Neotropical bird lice (Insecta: Phthiraptera). *J. Anim. Ecol.* 61, 195–206. doi: 10.2307/5631
- Clayton, D. H., Koop, J. A. H., Harbison, C. W., Moyer, B. R., and Bush, S. E. (2010). How birds combat ectoparasites. *Open Ornithol. J.* 3, 41–71. doi: 10.2174/1874453201003010041
- Clement, M., Posada, D., and Crandall, K. A. (2000). TCS: a computer program to estimate gene genealogies. *Mol. Ecol.* 9, 1657–1660. doi: 10.1046/j.1365-294x.2000.01020.x
- Criscione, C. D. (2008). Parasite co-structure: broad and local scale approaches. *Parasite* 15, 439–443. doi: 10.1051/parasite/2008153439
- Criscione, C. D., and Blouin, M. S. (2004). Life cycles shape parasite evolution: comparative population genetics of salmon trematodes. *Evolution* 58, 198–202. doi: 10.1111/j.0014-3820.2004.tb01587.x
- Criscione, C. D., Poulin, R., and Blouin, M. S. (2005). Molecular ecology of parasites: elucidating ecological and microevolutionary processes. *Mol. Ecol.* 14, 2247–2257. doi: 10.1111/j.1365-294X.2005.02587.x
- Dabert, J., Dabert, M., and Mironov, S. V. (2001). Phylogeny of feather mite subfamily Avenzoariinae (Acari: Analgoidea: Avenzoariidae) inferred from combined analyses of molecular and morphological data. *Mol. Phylogenet. Evol.* 20, 124–135. doi: 10.1006/mpev.2001.0948
- Dabert, J., and Ehrnsberger, R. (1991). Zwei neue Federmilben-Arten aus der Gattung *Ingrassia* Oudemans, 1905 (Analgoidea; Xolalgidae, Ingrassiinae). *Osnabrücker Naturw. Mitt.* 17, 127–142.
- Dabert, J., Ehrnsberger, R., and Dabert, M. (2008). *Glaucalges tytonis* sp. n. (Analgoidea, Xolalgidae) from the barn owl *Tyto alba* (Strigiformes, Tytonidae): compiling morphology with DNA barcode data for taxon descriptions in mites (Acari). *Zootaxa* 1719, 41–52.

- Dabert, J., and Mironov, S. V. (1999). Origin and evolution of feather mites (Astigmata). *Exp. Appl. Acarol.* 23, 437–454. doi: 10.1023/A:1006180705101
- Dabert, M., Coulson, S. J., Gwiadziowicz, D. J., Moe, B., Are Hanssen, S., Biersma, E. M., et al. (2015). Differences in speciation progress in feather mites (Analgoidea) inhabiting the same host: the case of *Zachvatkinia* and *Alloptes* living on arctic and long-tailed skuas. *Exp. Appl. Acarol.* 65, 163–179. doi: 10.1007/s10493-014-9856-1
- de Meeuus, T., Michalakakis, Y., and Renaud, F. (1998). Santa Rosalia revisited: or why are there so many kinds of parasites in “the garden of earthly delights”? *Parasitol. Today* 14, 10–13.
- Doña, J., Diaz-Real, J., Mironov, S., Bazaga, P., Serrano, D., and Jovani, R. (2015b). DNA barcoding and minibarcoding as a powerful tool for feather mite studies. *Mol. Ecol. Resour.* 5, 1216–1225. doi: 10.1111/1755-0998.12384
- Doña, J., Moreno-García, M., Criscione, C. D., Serrano, D., and Jovani, R. (2015a). Species mtDNA genetic diversity explained by infrapopulation size in a host-symbiont system. *Ecol. Evol.* 5, 5801–5809. doi: 10.1002/ece3.1842
- Doña, J., Potti, J., de la Hera, I., Blanco, G., Frías, O., and Jovani, R. (2017c). Vertical transmission in feather mites: insights into its adaptive value. *Ecol. Entomol.* 42, 492–499. doi: 10.1111/een.12408
- Doña, J., Proctor, H., Mironov, S., Serrano, D., and Jovani, R. (2016). Global associations between birds and vane-dwelling feather mites. *Ecology* 97, 3242. doi: 10.1002/ecy.1528
- Doña, J., Proctor, H., Mironov, S., Serrano, D., and Jovani, R. (2017b). Host specificity, infrequent major host switching and the diversification of highly host-specific symbionts: The case of vane-dwelling feather mites. *Global Ecol. Biogeogr.* 27, 188–198. doi: 10.1111/geb.12680
- Doña, J., Sweet, A. D., Johnson, K. P., Serrano, D., Mironov, S., and Jovani, R. (2017a). Cophylogenetic analyses reveal extensive host-shift speciation in a highly specialized and host-specific symbiont system. *Mol. Phylogenet. Evol.* 115, 190–196. doi: 10.1016/j.ympev.2017.08.005
- Drummond, A., and Rambaut, A. (2007). BEAST: Bayesian evolutionary analysis by sampling trees. *BMC Evol. Biol.* 7:214. doi: 10.1186/1471-2148-7-214
- Dubinin, V. B. (1951). Feather mites (Analgoidea). Part I. Introduction to their study. *Fauna USSR* 6, 1–363.
- Excoffier, L., and Lischer, H. E. L. (2010). Arlequin suite ver 3.5: a new series of programs to perform population genetics analyses under Linux and Windows. *Mol. Ecol. Resour.* 10, 564–567. doi: 10.1111/j.1755-0998.2010.02847.x
- Fernández-González, S., Pérez-Rodríguez, A., de la Hera, I., Proctor, H. C., and Pérez-Tris, J. (2015). Different space preferences and within-host competition promote niche partitioning between symbiotic feather mite species. *Int. J. Parasitol.* 45, 655–662. doi: 10.1016/j.ijpara.2015.04.003
- Fitzpatrick, C., and Threlfall, W. (1977). The ectoparasites of three species of seabirds from Newfoundland, Canada. *Can. J. Zool.* 55, 1205–1209. doi: 10.1139/z77-158
- Friesen, V. L., Smith, A. L., Gómez-Díaz, E., Bolton, M., Furness, R. W., González Solís, J., et al. (2007). Sympatric speciation by allochrony in a seabird. *Proc. Natl. Acad. Sci. U.S.A.* 104, 18589–18594. doi: 10.1073/pnas.0700446104
- Furness, R. W., and Monteiro, L. R. (1995). Red-billed tropic bird *Phaethon aethereus* in the Azores: first breeding record for Europe. *Bull. Br. Orn. Club.* 115, 6–8.
- Gandon, S., and Michalakakis, Y. (2002). Local adaptation, evolutionary potential and host parasite coevolution: interactions between migration, mutation, population size and generation time. *J. Evol. Biol.* 15, 451–462. doi: 10.1046/j.1420-9101.2002.00402.x
- Gaud, J., and Atyeo, W. T. (1996). Feather mites of the World (Acarina, Astigmata): the supraspecific taxa. *Ann. Zool. Wet.* 277:1–193 (Part I. Text), 1–436 (Part II. Illustrations).
- González-Solís, J., Felicísimo, A., Fox, J. W., Afanasyev, V., Kolbeinsson, Y., and Muñoz, J. (2009). Influence of sea surface winds on shearwater migration detours. *Mar. Ecol. Prog. Ser.* 391, 221–230. doi: 10.3354/meps08128
- Gómez-Díaz, E., González-Solís, J., and Peinado, M. A. (2009). Population structure in a highly pelagic seabird, the Cory's shearwater *Calonectris diomedea*: an examination of genetics, morphology and ecology. *Mar. Ecol. Prog. Ser.* 382, 197–209. doi: 10.3354/meps07974
- Gómez-Díaz, E., González-Solís, J., Peinado, M. A., and Page, R. D. M. (2006). Phylogeography of the *Calonectris* shearwaters using molecular and morphometric data. *Mol. Phylogenet. Evol.* 41, 322–332. doi: 10.1016/j.ympev.2006.05.006
- Hall, T. A. (1999). BioEdit: a user-friendly biological sequence alignment editor and analysis program for Windows 95/98/NT. *Nucleic Acids Symp. Ser.* 41, 95–98.
- Harbison, C. W., Jacobsen, M. V., and Clayton, D. H. (2009). A hitchhiker's guide to parasite transmission: the phoretic behaviour of feather lice. *Int. J. Parasitol.* 39, 569–575. doi: 10.1016/j.ijpara.2008.09.014
- Hart, M. W., and Sunday, J. (2007). Things fall apart: biological species form unconnected parsimony networks. *Biol. Lett.* 3, 509–512. doi: 10.1098/rsbl.2007.0307
- Štefka, J., Hoeck, P. E. A., Keller, L. F., and Smith, V. S. (2011). A hitchhikers guide to the Galápagos: co-phylogeography of Galápagos mockingbirds and their parasites. *BMC Evol. Biol.* 11:284. doi: 10.1186/1471-2148-11-284
- Johnson, K. P., Adams, R. J., Page, R. D., and Clayton, D. H. (2003). When do parasites fail to speciate in response to host speciation? *Syst. Biol.* 52, 37–47. doi: 10.1080/10635150390132704
- Johnson, K. P., Williams, B. L., Drown, D. M., Adams, R. J., and Clayton, D. H. (2002). The population genetics of host specificity: genetic differentiation in dove lice (Insecta: Phthiraptera). *Mol. Ecol.* 11, 25–38. doi: 10.1046/j.0962-1083.2001.01412.x
- Jovani, R., and Serrano, D. (2001). Feather mites (Astigmata) avoid moulting wing feathers of passerine birds. *Anim. Behav.* 62, 723–727. doi: 10.1006/anbe.2001.1814
- Jovani, R., Serrano, D., Frías, Ó., and Blanco, G. (2006). Shift in feather mite distribution during the molt of passerines: the case of barn swallows (*Hirundo rustica*). *Can. J. Zool.* 84, 729–735. doi: 10.1139/z06-042
- Kambhampati, S., and Smith, P. T. (1995). PCR primers for the amplification of four insect mitochondrial gene fragments. *Insect Mol. Biol.* 4, 233–236. doi: 10.1111/j.1365-2583.1995.tb00028.x
- Klimov, P. B., and O'Connor, B. M. (2008). Origin and higher-level relationships of psoroptidian mites (Acari: Astigmata: Psoroptidia): Evidence from three nuclear genes. *Mol. Phylogenet. Evol.* 47, 1135–1156. doi: 10.1016/j.ympev.2007.12.025
- Knowles, L. L., and Klimov, P. B. (2011). Estimating phylogenetic relationships despite discordant gene trees across loci: the species tree of a diverse species group of feather mites (Acari: Proctophylloidae). *Parasitology* 138, 1750–1759. doi: 10.1017/S003118201100031X
- Krasnov, B. R., Mouillot, D., Shenbrot, G. I., Khokhlova, I. S., Vinarski, M. V., Korall-Vinarskaya, N. P., et al. (2010). Similarity in ectoparasite faunas of Palaearctic rodents as a function of host phylogenetic, geographic or environmental distances: which matters the most? *Int. J. Parasitol.* 40, 807–817. doi: 10.1016/j.ijpara.2009.12.002
- Lajeunesse, M. J., and Forbes, M. R. (2002). Host range and local parasite adaptation. *Proc. R. Soc. Lond. B. Biol. Sci.* 269, 703–710. doi: 10.1098/rspb.2001.1943
- Librado, P., and Rozas, J. (2009). DnaSP v5: a software for comprehensive analysis of DNA polymorphism data. *Bioinformatics* 25, 1451–1452. doi: 10.1093/bioinformatics/btp187
- Magalhães, S., Forbes, M. R., Skoracka, A., Osakabe, M., Chevillon, C., and McCoy, K. D. (2007). Host race formation in the Acari. *Exp. Appl. Acarol.* 42, 225–238. doi: 10.1007/s10493-007-9091-0
- Malenke, J. R., Johnson, K. P., and Clayton, D. H. (2009). Host specialization differentiates cryptic species of feather-feeding lice. *Evolution* 63, 1427–1438. doi: 10.1111/j.1558-5646.2009.00642.x
- Mazé-Guilmo, E., Blanchet, S., McCoy, K. D., and Loot, G. (2016). Host dispersal as the driver of parasite genetic structure: a paradigm lost? *Ecol. Lett.* 19, 336–347. doi: 10.1111/ele.12564
- McCoy, K. D., Boulinier, T., Tirard, C., and Michalakakis, Y. (2001). Host specificity of a generalist parasite: genetic evidence of sympatric host races in the seabird tick *Ixodes uriae*. *J. Evol. Biol.* 14, 395–405. doi: 10.1046/j.1420-9101.2001.00290.x
- McCoy, K. D., Boulinier, T., Tirard, C., and Michalakakis, Y. (2003). Host-dependent genetic structure of parasite populations: differential dispersal of seabird tick host races. *Evolution* 57, 288–296. doi: 10.1111/j.0014-3820.2003.tb00263.x
- McCoy, K. D., Léger, E., and Dietrich, M. (2013). Host specialization in ticks and transmission of tick-borne diseases: a review. *Front. Cell. Infect. Microbiol.* 3:57. doi: 10.3389/fcimb.2013.00057
- Militão, T., Dinis, H. A., Zango, L., Calabuig, P., Stefan, L. M., and González-Solís, J. (2017). Population size, breeding biology and on-land threats of Cape Verde

- petrel (*Pterodroma feae*) in Fogo Island, Cape Verde. *PLoS ONE* 12:e0174803. doi: 10.1371/journal.pone.0174803
- Miller, A. D., Skoracka, A., Navia, D., de Mendonca, R. S., Szydło, W., Schultz, M. B., et al. (2013). Phylogenetic analyses reveal extensive cryptic speciation and host specialization in an economically important mite taxon. *Mol. Phylogenet. Evol.* 66, 928–940. doi: 10.1016/j.ympev.2012.11.021
- Mironov, S. V. (1989a). A brief review of the feather mites of the genus *Zachvatkinia* in the USSR (Analgoidea, Avenzoariidae). *Parazitol. Sb.* 36, 91–115.
- Mironov, S. V. (1989b). A new subgenus and three new species of the feather mite genus *Zachvatkinia* from Procellariiformes. *Parazitologia*. 23, 309–319.
- Mironov, S. V. (1996). On a validity of the genus *Plicatalloptes* (Acarina: Analgoidea: Alloptidae). *Parazitologiya* 30, 216–222.
- Mironov, S. V. (2000). Seasonal dynamics of the feather mite *Monojoubertia microphylla* (Astigmata: Analgoidea: Proctophylloidae) on the chaffinch *Fringilla coelebs*. *Parazitologia*. 34, 457–469.
- Mironov, S. V., and Palma, R. L. (2006). Two new feather mite species (Acari: Analgoidea) from the Tuamotu Sandpiper *Aechmorrhynchus parvirostris* (Charadriiformes: Scolopacidae). *Tuhinga* 17, 49–59.
- Mironov, S. V., and Proctor, H. C. (2008). The probable association of feather mites of the genus *Ingrassia* Oudemans, 1905 (Analgoidea: Xolalgidae) with the blue penguin *Eudyptula minor* (Aves: Sphenisciformes) in Australia. *J. Parasitol.* 94, 1243–1248. doi: 10.1645/GE-1579.1
- Mironov, S. V., and Stefan, L. M. (2013). Redescription of the feather mite species, *Zachvatkinia puffini* (Buchholz, 1869) (Acariformes: Avenzoariidae), from its type host, the grey petrel *Procellaria cinerea* (Procellariiformes: Procellariidae). *Acarina* 21, 27–37.
- Mironov, S. V., and Stefan, L. M. (2016). On identification of species in the feather mite genus *Laminalloptes* Dubinin, 1955 (Acari: Alloptidae). *Acarina* 24, 77–85. doi: 10.21684/0132-8077.2016.24.1.77.85
- Mironov, S. V., Stefan, L. M., and González-Solis, J. (2015). New species of the feather mite genus *Promegnina* Gaud and Atyeo (Acari: Avenzoariidae) from petrels and shearwaters (Procellariiformes: Procellariidae). *Syst. Parasitol.* 90, 91–103. doi: 10.1007/s11230-014-9532-1
- Monteiro, L. R., and Furness, R. W. (1998). Speciation through temporal segregation of Madeiran storm petrel (*Oceanodroma castro*) populations in the Azores? *Phil. Trans. R. Soc. Lond. B* 353, 945–953. doi: 10.1098/rstb.1998.0259
- Mouillot, D., Krasnov, B. R., Shenbrot, G. I., Gaston, K. J., and Poulin, R. (2006). Conservatism of host specificity in parasites. *Ecography* 29, 596–602. doi: 10.1111/j.0906-7590.2006.04507.x
- Pap, P. L., Szép, T., Tökölly, J., and Piper, S. (2005). Habitat preference, escape behavior, and cues used by feather mites to avoid molting wing feathers. *Behav. Ecol.* 17, 277–284. doi: 10.1093/beheco/arj026
- Peterson, P. C. (1971). A revision of the feather mite genus *Brephosceles* (Proctophylloidae: Alloptinae). *Bull. Univ. Nebr. State Mus.* 9, 89–172.
- Peterson, P. C., and Atyeo, W. T. (1968). New genera related to the genus *Brephosceles* Hull, 1934 (Acarina: Proctophylloidae). *Bull. Univ. Nebr. State Mus.* 8, 217–236.
- Pons, J., Barraclough, T. G., Gomez-Zurita, J., Cardoso, A., Duran, D. P., Hazell, S., et al. (2006). Sequence-based species delimitation for the DNA taxonomy of undescribed insects. *Syst. Biol.* 55, 595–609. doi: 10.1080/10635150600852011
- Poulin, R. (2010). Decay of similarity with host phylogenetic distance in parasite faunas. *Parasitology* 137, 733–741. doi: 10.1017/S0031182009991491
- Poulin, R., Krasnov, B. R., and Mouillot, D. (2011). Host specificity in phylogenetic and geographic space. *Trends Parasitol.* 27, 355–361. doi: 10.1016/j.pt.2011.05.003
- Poulin, R., and Morand, S. (2000). The diversity of parasites. *Q. Rev. Biol.* 75, 277–293. doi: 10.1086/393500
- Proctor, H. C. (2003). Feather mites (Acari: Astigmata): ecology, behavior and evolution. *Annu. Rev. Entomol.* 48, 185–209. doi: 10.1146/annurev.ento.48.091801.112725
- Proctor, H., and Owens, I. (2000). Mites and birds: diversity, parasitism and coevolution. *Trends Ecol. Evol. (Amst)*. 15, 358–364. doi: 10.1016/S0169-5347(00)01924-8
- Ramos, R., Ramirez, I., Paiva, V. H., Militão, T., Biscoito, M., Menezes, D., et al. (2016). Global spatial ecology of three closely-related gadfly petrels. *Sci. Rep.* 6:23447. doi: 10.1038/srep23447
- Ramos, R., Sanz, V., Militão, T., Bried, J., Neves, V. C., Biscoito, M., et al. (2015). Leapfrog migration and habitat preferences of a small oceanic seabird, Bulwer's petrel (*Bulweria bulwerii*). *J. Biogeogr.* 42, 1651–1664. doi: 10.1111/jbi.12541
- Reed, D. L., Allen, S. K., and Hafner, M. S. (2000). Mammal hair diameter as a possible mechanism for host specialization in chewing lice. *J. Mammal.* 81, 999–1007. doi: 10.1644/1545-1542(2000)081<0999:MHDAAP>2.0.CO;2
- Rivera-Parra, J. L., Levin, I. I., Johnson, K. P., and Parker, P. G. (2015). Lineage sorting in multihost parasites: *Eidmanniella albescens* and *Fregatiella aurifasciata* on seabirds from the Galapagos Islands. *Ecol. Evol.* 5, 3264–3271. doi: 10.1002/ece3.1587
- Stefan, L. M., Gómez-Díaz, E., Elguero, E., Proctor, H. C., McCoy, K. D., and González-Solis, J. (2015). Niche partitioning of feather mites within a seabird host, *Calonectris borealis*. *PLoS ONE* 10:e0144728. doi: 10.1371/journal.pone.0144728
- Stefan, L. M., Gómez-Díaz, E., and Mironov, S. V. (2013). Three new species of the feather mite subfamily Ingrassiinae (Acariformes: Xolalgidae) from shearwaters and petrels (Procellariiformes: Procellariidae). *Zootaxa* 3682, 105–120. doi: 10.11646/zootaxa.3682.1.4
- Stefan, L. M., McCoy, K. D., and Mironov, S. V. (2014). A new species of the feather mite genus *Rhinozachvatkinia* (Acari: Avenzoariidae) from *Calonectris* shearwaters (Procellariiformes: Procellariidae): integrating morphological descriptions with DNA barcode data. *Folia Parasitol.* 61, 90–96. doi: 10.14411/fp.2014.009
- Tamura, K., Dudley, J., Nei, M., and Kumar, S. (2007). MEGA4: molecular evolutionary genetics analysis (MEGA) software version 4.0. *Mol. Biol. Evol.* 24, 1596–1599. doi: 10.1093/molbev/msm092
- Templeton, A. R. (2001). Using phylogeographic analyses of gene trees to test species status and processes. *Mol. Ecol.* 10, 779–791. doi: 10.1046/j.1365-294x.2001.01199.x
- Tompkins, D. M., and Clayton, D. H. (1999). Host resources govern the specificity of swiftlet lice: size matters. *J. Anim. Ecol.* 68, 489–500. doi: 10.1046/j.1365-2656.1999.00297.x
- Walther, B. A., and Clayton, D. H. (1997). Dust-ruffling: a simple method for quantifying ectoparasite loads of live birds. *J. Field. Ornithol.* 68, 509–518.
- Whiteman, N. K., Sánchez, P., Merkel, J., Klompen, H., and Parker, P. G. (2006). Cryptic host specificity of an avian skin mite (Epidermoptidae) vectored by louseflies (Hippoboscidae) associated with two endemic Galapagos bird species. *J. Parasitol.* 92, 1218–1228. doi: 10.1645/GE-918R.1
- Whiteman, N. K., Santiago-Alarcon, D., Johnson, K. P., and Parker, P. G. (2004). Differences in straggling rates between two genera of dove lice (Insecta: Phthiraptera) reinforce population genetic and cophylogenetic patterns. *Int. J. Parasitol.* 34, 1113–1119. doi: 10.1016/j.ijpara.2004.06.003
- Zajková, Z., Militão, T., and González-Solis, J. (2017). Year-round movements of a small seabird and oceanic isotopic gradient in the tropical Atlantic. *Mar. Ecol. Prog. Ser.* 579, 169–183. doi: 10.3354/meps12269

Conflict of Interest Statement: The authors declare that the research was conducted in the absence of any commercial or financial relationships that could be construed as a potential conflict of interest.

Copyright © 2018 Stefan, Gómez-Díaz, Mironov, González-Solis and McCoy. This is an open-access article distributed under the terms of the Creative Commons Attribution License (CC BY). The use, distribution or reproduction in other forums is permitted, provided the original author(s) and the copyright owner(s) are credited and that the original publication in this journal is cited, in accordance with accepted academic practice. No use, distribution or reproduction is permitted which does not comply with these terms.