



**HAL**  
open science

# Analysis of genetic polymorphisms and tropism in East African *Leishmania donovani* by Amplified Fragment Length Polymorphism and kDNA minicircle sequencing

Hanan T Jaber, Asrat Hailu, Francine Pratlong, Patrick Lami, Patrick Bastien, Charles Jaffe

## ► To cite this version:

Hanan T Jaber, Asrat Hailu, Francine Pratlong, Patrick Lami, Patrick Bastien, et al.. Analysis of genetic polymorphisms and tropism in East African *Leishmania donovani* by Amplified Fragment Length Polymorphism and kDNA minicircle sequencing. *Infection, Genetics and Evolution*, 2018, 65, pp.80 - 90. 10.1016/j.meegid.2018.07.016 . hal-01914735

**HAL Id: hal-01914735**

**<https://hal.umontpellier.fr/hal-01914735>**

Submitted on 7 Nov 2018

**HAL** is a multi-disciplinary open access archive for the deposit and dissemination of scientific research documents, whether they are published or not. The documents may come from teaching and research institutions in France or abroad, or from public or private research centers.

L'archive ouverte pluridisciplinaire **HAL**, est destinée au dépôt et à la diffusion de documents scientifiques de niveau recherche, publiés ou non, émanant des établissements d'enseignement et de recherche français ou étrangers, des laboratoires publics ou privés.



## Research paper

# Analysis of genetic polymorphisms and tropism in East African *Leishmania donovani* by Amplified Fragment Length Polymorphism and kDNA minicircle sequencing

Hanan T. Jaber<sup>a</sup>, Asrat Hailu<sup>b</sup>, Francine Pratlong<sup>c,d</sup>, Patrick Lami<sup>c,d</sup>, Patrick Bastien<sup>c,d</sup>, Charles L. Jaffe<sup>a,\*</sup>

<sup>a</sup> Department of Microbiology and Molecular Genetics, Kuvim Centre for the Study of Infectious and Tropical Diseases, IMRIC, Hebrew University - Hadassah Medical School, Jerusalem, Israel

<sup>b</sup> School of Medicine, College of Health Sciences, Department of Microbiology, Immunology & Parasitology, Addis Ababa University, Addis Ababa, Ethiopia

<sup>c</sup> Department of Parasitology-Mycology, National Reference Centre for Leishmanioses, Academic Hospital of Montpellier, France

<sup>d</sup> University of Montpellier, CNRS 5290/IRD 224 "MiVEGEC", Montpellier, France

## ARTICLE INFO

## Keywords:

Amplified Fragment Length Polymorphism  
HIV-visceral leishmaniasis co-infections  
Post-kala azar dermal leishmaniasis  
*Leishmania donovani*  
Genetic polymorphism  
kDNA minicircle sequence

## ABSTRACT

Visceral leishmaniasis (VL), the most severe form of leishmaniasis, is caused by *Leishmania donovani*. In addition to fatal VL, these parasites also cause skin diseases in immune-competent and -suppressed people, post-kala azar dermal leishmaniasis (PKDL) and HIV/VL co-infections, respectively. Genetic polymorphism in 36 Ethiopian and Sudanese *L. donovani* strains from VL, PKDL and HIV/VL patients was examined using Amplified Fragment Length Polymorphism (AFLP), kDNA minicircle sequencing and Southern blotting. Strains were isolated from different patient tissues: in VL from lymph node, spleen or bone marrow; and in HIV/VL from skin, spleen or bone marrow. When VL and PKDL strains from the same region in Sudan were examined by Southern blotting using a DNA probe to the *L. donovani* 28S rRNA gene only minor differences were observed. kDNA sequence analysis distributed the strains in no particular order among four clusters (A – D), while AFLP analysis grouped the strains according to geographical origin into two major clades, Southern Ethiopia (SE) and Sudan/Northern Ethiopia (SD/NE). Strains in the latter clade were further divided into subpopulations by zymodeme, geography and year of isolation, but not by clinical symptoms. However, skin isolates showed significantly ( $p < 0.0001$ ) fewer polymorphic AFLP fragments (average 10 strains =  $348.6 \pm 8.1$ ) than VL strains (average 26 strains =  $383.5 \pm 3.8$ ).

## 1. Introduction

The leishmaniasis are vector-borne diseases caused by several species and subspecies of obligate intracellular parasites belonging to the genus *Leishmania*. Diseases caused by these parasites are endemic in tropical and subtropical regions of both the Old and New World. Based on the clinical pattern of disease they are classified into three major forms: cutaneous, mucocutaneous and visceral leishmaniasis (Bañuls et al., 2011). Cutaneous leishmaniasis is the mildest form of the disease and is typified by localized skin lesions at the site of the sandfly bite that generally heal spontaneously with significant scarring. In mucocutaneous leishmaniasis, the parasites metastasize from the original lesion to the naso-pharynx region where massive tissue destruction may occur resulting in extensive disfigurement. This form of disease does not self-cure nor does it respond well to drug treatment. Finally, visceral

leishmaniasis (VL), the most severe form of disease, has a high mortality rate if not diagnosed and treated efficaciously. VL is caused by *Leishmania donovani* and *L. infantum*. These parasites preferentially infect the liver, spleen and bone marrow. The estimated annual number of new cases of VL worldwide is about 200,000–400,000 (Alvar et al., 2012).

Post kala-azar dermal leishmaniasis (PKDL) is a skin-condition that can develop in VL patients either during or after treatment but may also occur in previously asymptomatic patients with no history of VL. PKDL is usually chronic and exhibits various pathologies that include macular, papular or nodular lesions. It is restricted to areas where *L. donovani* is prevalent, and occurs in approximately 5–10% of Indian, and 50% of Sudanese VL cases. It generally appears following recovery from VL within 0.5–6 years in India and Nepal, or 0–13 months in East Africa (Mukhopadhyay et al., 2014; Zijlstra, 2014; Zijlstra et al., 2003). In

\* Corresponding author.

E-mail address: [cjaffe@cc.huji.ac.il](mailto:cjaffe@cc.huji.ac.il) (C.L. Jaffe).

<https://doi.org/10.1016/j.meegid.2018.07.016>

Received 24 December 2017; Received in revised form 6 July 2018; Accepted 13 July 2018

Available online 19 July 2018

1567-1348/© 2018 The Authors. Published by Elsevier B.V. This is an open access article under the CC BY license (<http://creativecommons.org/licenses/by/4.0/>).

Ethiopia, PKDL is endemic in the northern focus (Metema/Humera), which is an extension of the endemic region in Eastern Sudan (Zijlstra et al., 2003). Approximately, 14% of the VL patients develop PKDL within 6 months after cure, and PKDL is more prevalent in HIV-positive patients (27.3%) than in HIV-negative patients (13.3%) (Ritmeijer et al., 2001).

Even though the same species, *L. donovani*, causes both VL and PKDL, little is known regarding the factors, both host and parasite, that regulate these different pathologies. In addition to host parameters, parasite genetic determinants may play a role in the survival and persistence of *Leishmania* in different host organs, skin versus viscera. A few reports have compared Indian VL and PKDL strains. In one study, polymorphism in the 28S rRNA gene locus was postulated to account for the difference in tissue tropism (Sreenivas et al., 2004). PKDL parasites were shown to have higher expression levels of surface proteins e.g., gp63 and gp46 (Salotra et al., 2006). Southern blotting using a  $\beta$ -tubulin probe identified different banding patterns for PKDL and VL isolates (Dey and Singh, 2007). In addition, PKDL isolates showed lower aquaglyceroporin (AQP1) expression compared to VL isolates (Mishra et al., 2013).

*Leishmania*, especially *L. infantum* and *L. donovani*, are opportunistic pathogens. HIV/*Leishmania* co-infections have been reported in 35 countries, and currently account for 2–9% of all VL cases in endemic countries (Alvar et al., 2008). In Sudan, HIV prevalence is low (1.3%), so few cases of HIV/VL co-infection have been reported (Diro et al., 2014; Zijlstra, 2014). The rate of HIV/VL co-infection in Ethiopia is between 15 and 30%, with the most important foci found in the Metema / Humera regions where 60% of the total cases of VL occur (Haile and Anderson, 2006; Hurissa et al., 2010; Lyons et al., 2003). In AIDS patients, *Leishmania* are found in organs they do not normally invade in immunocompetent people, and skin lesions are commonly described in HIV/VL patients infected with *L. donovani* or *L. infantum* (Zijlstra, 2014).

One of the central questions in the *Leishmania* research is why some species only cause cutaneous disease, whereas others cause primarily visceral disease? In the case of the *L. donovani* complex, parasites reside in various internal organs (liver, spleen, lymph nodes, bone marrow), as well as the skin of PKDL and HIV/VL patients (Zijlstra et al., 2003). In recent years, our understanding of the parasite genetic determinants of tropism has improved, and several reports suggest that specific parasite genes such as the A2 family, LinJ.28.0340, LinJ.15.0900, and a ras-like RagC GTPase are involved (Zhang et al., 2014).

Despite these new findings, the underlying biology of tropism and the development of PKDL still remain elusive (Mukhopadhyay et al., 2014; Zijlstra, 2014; Zijlstra et al., 2003). Little is known about the factors, parasite or host, which cause a shift in the infection site from the viscera to the dermis resulting in PKDL. Furthermore, it is not known whether the parasites in PKDL lesions represent residual parasites from the original infection or are due to re-infection. In the former case, the shift could be due to the altered immune status of the host (Zijlstra, 2016).

East Africa is an important focus of VL where it is endemic in eight countries, with an estimated incidence between 29,400–56,700 cases per year (Alvar et al., 2012; Consortium, 2010). Most of the cases are found in Sudan, South Sudan and Ethiopia (Alvar et al., 2012). In Ethiopia six endemic areas with an estimated annual incidence of 4000 cases have been identified (Haile and Anderson, 2006). In Sudan, VL occurs in different foci: Kapoeta near the Kenyan border, the Western Upper Nile (Seaman et al., 1996), and a wide belt extending from the White Nile eastward to the Sudanese-Ethiopian border (El-Hassan et al., 1995; El-Safi et al., 2002; Elnaiem et al., 2003); and extending into the Metema - Humera focus in Ethiopia (Consortium, 2010).

Amplified Fragment Length Polymorphisms (AFLP) is a PCR technique that allows the comparison and identification of genetic polymorphisms randomly distributed across the entire genome and has been proven as a powerful technique to infer phylogenetic relationships

among many organisms. This method allows the simultaneous screening of multiple markers randomly distributed over the entire genome and can be applied to organisms where genomic sequences are not available. As such it offers a good alternative to whole genome sequencing (Meudt and Clarke, 2007; Odiwuor et al., 2011), and can be used to identify unique regions that may be associated with phenotypic differences among organisms.

In *Leishmania*, AFLP has been used to examine parasite drug resistance (Kumar et al., 2009), differences between species causing VL and CL (Kumar et al., 2010), and taxonomy of the *L. Viannia* subgenus (Odiwuor et al., 2012; Restrepo et al., 2013). Odiwuor et al. (Odiwuor et al., 2011) employed twelve specific primer pairs, six of which were used in this study, to analyze genetic diversity among 29 strains belonging to the *L. donovani* complex (11 *L. donovani* and 18 *L. infantum*) from East Africa, Indian subcontinent, Europe and South America. A total of 852 markers, 52% polymorphic, were used. Three major clusters were identified: one containing East African (Sudan and Ethiopia) strains, a second containing mixed Kenyan and Indian isolates, and the third comprised of *L. infantum* strains. These results were consistent with molecular analysis of the same isolates using other techniques such as MLMT, MLST and MLEE (Baleela et al., 2014; Downing et al., 2011, 2012; Kuhls et al., 2007; Lukes et al., 2007; Mauricio et al., 2006; Ochsenreither et al., 2006; Zemanová et al., 2007) showing that AFLP provides a reliable reproducible method for analyzing genetic diversity.

Mitochondrial or kinetoplast DNA (kDNA) in trypanosomatids consists of a network of 10–20 maxicircles (20–40 kbp in size) and ~10,000 minicircles (< 1 kbp in size) (Jensen and Englund, 2012). The maxicircle encodes mitochondrial genes and rRNA, while minicircles, with the exception of a few small regions involved in their replication, are highly polymorphic and encode guide RNAs that function in the process of mRNA editing of the mitochondrial genes (Jensen and Englund, 2012). Minicircle DNA sequences are highly heterogeneous and undergo rapid evolution (Rogers and Wirth, 1987). kDNA minicircle analysis, by either PCR-RFLP or sequencing, has been shown to be highly discriminatory, even among strains that appear genetically homogenous by other techniques (Bhattarai et al., 2010; Cortes et al., 2006; Cuervo et al., 2004; Laurent et al., 2007). Some reports have shown that kDNA genotypes are associated with host species origin (Alonso et al., 2010; Oryan et al., 2013a) and clinical disease (Oryan et al., 2013b).

In this work genetic polymorphism was examined in *L. donovani* strains isolated from patients with different clinical symptoms (VL, PKDL and HIV/VL co-infections) and tropism (lymph node, spleen, bone marrow and skin isolates) using two methods, AFLP analysis and kDNA minicircle sequencing. The majority of strains originated from similar biotopes in Northern Ethiopia (NE) and Eastern Sudan (SD) where the parasite is transmitted by *P. orientalis* (Elnaiem, 2011). Most of the SD strains were isolated in a single village, Barbar El Fugara, not far from the Ethiopian border (El-Safi et al., 2002; Elnaiem et al., 2003) during the large outbreak that occurred in Gedarf state between 1996 and 1999. This epidemic has spread to Eritrea and northwest Ethiopia, and the NE strains were isolated from a VL focus near the border with SD (Consortium, 2010). VL predominantly affects young male migrant workers in NE (Alvar et al., 2007; Mengesha and Abuhoy, 1978; Ritmeijer et al., 2006), whereas in SD the majority of cases were children (Collin et al., 2004; El-Safi et al., 2002; Elnaiem et al., 2003). Polymorphisms and subtle differences in nuclear DNA and kDNA minicircles among the strains were explored.

## 2. Materials and methods

### 2.1. Parasites and DNA extraction

A total of 37 *L. donovani* strains from Ethiopia ( $n = 22$ ) and Sudan ( $n = 15$ ) were used in this study. Nine strains are from HIV/VL co-infected patients. Eight strains are from PKDL patients in Sudan. A

description of the *L. donovani* parasites used is given in Table S1. *L. major* (MHOM/IL/81/Friedlin) was used as an outlier for the AFLP studies. All parasites were grown at 26 °C in complete M199 medium (pH 6.8) supplemented with 10% fetal calf serum (Zackay et al., 2013). Leishmanial DNA was extracted using the phenol-chloroform method (Schonian et al., 2003). Strain MHOM/SD/97/LEM3472 (SD9) was cloned using the hanging drop methodology as previously described by (Garin et al., 2002).

## 2.2. Ethics statement

This study was reviewed and approved by the Institutional Review Board (IRB), Medical Faculty, Addis Ababa University. Written informed consent was obtained from each study participant.

## 2.3. Parasite characterization

Initial species characterization was carried out by several methods including: Internal Transcribed Spacer-1 (ITS-1) PCR followed by restriction fragment length polymorphism (RFLP) (Schonian et al., 2003), cpbE/F - PCR (Zackay et al., 2013), k26 - PCR (Zackay et al., 2013) and/or multilocus enzyme electrophoresis (MLEE) (Dereure et al., 2003; El-Safi et al., 2002; Pralong et al., 2001). The ITS-1 PCR product of one strain, SD9, which gave an atypical RFLP pattern (Fig. S1, panel A), was purified using Wizard SV Gel and PCR Clean-Up System (Promega®) and cloned into pGEM-T Easy Vector System (Promega®). Colonies ( $n = 4$ ) were picked and the inserts were sequenced. In addition, the PCR product of the parental strain was sequenced. These sequences (Fig. S1, panel B), and the sequence previously deposited in GenBank (Accession No. [emb|AJ634370.1](https://www.ncbi.nlm.nih.gov/nuclot/emb|AJ634370.1)) were compared using MultAlin (Corpet, 1988).

## 2.4. kDNA minicircle genotyping

PCR was performed using the primer pair: Uni21 (5'-GGG GTT GGT GTA AAA TAG GG) and Lmj4 (5'-AAA ATG AAC GGG ATT TCT GC) (Anders et al., 2002). *Leishmania* DNA was added to a reaction mixture (25- $\mu$ l final volume) containing High Yield ready mix (Syntezza Bioscience®) and primers (2  $\mu$ M). The PCR conditions were as follows: initial denaturation 95 °C 5 min; 30 cycles of denaturation 95 °C 20 s, annealing 63 °C 25 s and extension 72 °C 40 s; final extension in the last cycle was 6 min 72 °C. Amplicons were analyzed by 2% agarose gel electrophoresis, and the gels stained with ethidium bromide (0.3  $\mu$ g/ml). PCR products were isolated using the Wizard SV gel and PCR Clean-Up System (Promega®) and cloned into pGEM-T Easy vector (pGEM-T Easy Vector System, Promega®) according to the manufacturer's instructions. DH5 $\alpha$  cells were transformed using heat shock for 45 s at 42 °C and grown in LB medium. Colonies containing inserts were picked and added directly to a PCR mix containing Dream Taq PCR master mix (MBI Fermentas®) in a total volume of 50  $\mu$ l containing 0.5  $\mu$ M of the pGEM-T Easy Vector primers: SP6: 5'-TAT TTA GGT GAC ACT ATA G-3', and T7: 5'-TAA TAC GAC TCA CTA TAG GG-3'. PCR conditions for insert amplification were: initial denaturation 5 min at 95 °C followed by 35 cycles of 30 s at 95 °C, 40 s at 56 °C and 45 s at 72 °C with a final elongation step of 10 min at 72 °C. PCR products, one colony per strain, were sequenced directly. The sequences were aligned using Muscle algorithm with gaps, and the phylogenetic tree was built using Maximum Likelihood method (ML). The best model, Hasegawa-Kishino-Yano model (Hasegawa et al., 1985) with Gamma-distributed rates (5 categories, +G = 1.6955) plus Invariant Sites (+I = 0.1725) was determined using the "Find best DNA/protein model (ML) function" in MEGA 7.0.2 (Kumar et al., 2016). An essentially identical tree was obtained using the Tamura-Nei model +G and +I (Tamura and Nei, 1993). Nearest-Neighbor-Interchange (NNI) was used as the ML Heuristic Method. Initial tree(s) for the heuristic search were obtained automatically by applying Neighbor-Join and BioNJ algorithms to a

matrix of pairwise distances estimated using the Maximum Composite Likelihood (MCL) approach, and then selecting the topology with superior log likelihood value (-4468.83). The analysis involved 35 nucleotide sequences. All positions containing gaps and missing data were eliminated. There was a total of 287 positions in the final dataset.

## 2.5. Southern blotting

A DIG-dUTP (Roche Applied Science®) labeled DNA probe (Ld28S) to the  $\zeta$  and  $\epsilon$  subunit regions of the *L. donovani* (MHOM/SD/00/Khartoum) 28S rRNA gene (accession no. AF115465) was prepared by PCR, and used for Southern blotting of parasite DNAs. The complete protocol is described in the supporting material.

## 2.6. Amplified Fragment Length Polymorphism (AFLP) fingerprinting

AFLP was carried out as previously described (Odiwuor et al., 2011) with some modifications.

### 2.6.1. Restriction digestion and ligation of adaptors

Following digestion with TaqI (10 U, New England Biolabs®), the mixture was cooled on ice, and then 10 U PstI HF (New England Biolabs®) was added and the reaction incubated for an additional 1 h at 37 °C. Subsequently, the pre-annealed specific adaptors (Syntezza Bioscience®) (Table S2) were ligated to the genomic DNA fragments using T4 DNA ligase (1 U, MBI Fermentas®). Ligation was done at 22 °C for 3 h, and the resulting RL products used as templates in AFLP PCR without heat inactivation of endonucleases.

### 2.6.2. AFLP PCR

Adaptor-ligated fragments were subjected to two successive PCR reactions. First, pre-selective PCR was done using Dream Taq PCR master mix (MBI Fermentas®) in a total volume of 50  $\mu$ l containing 5  $\mu$ l of the four-fold diluted RL products and 0.5  $\mu$ M of the primers PstI + 0 and TaqI + 0 (Table S2). The PCR conditions were: initial denaturation 5 min at 95 °C followed by 20 cycles of 20 s at 95 °C, 30 s at 56 °C and 1 min at 72 °C with a final elongation step of 15 min at 72 °C. Pre-selective amplification products were four folded diluted in water and used as templates for a second, selective, PCR. Selective PCR amplification was carried out using JumpStart™ Taq DNA Polymerase with MgCl<sub>2</sub> (Sigma Aldrich®) in a total volume of 50  $\mu$ l using different pairs of labeled and non-labeled primers (Table S2). Each reaction mixture contained: 1  $\times$  PCR buffer, MgCl<sub>2</sub> (2.5 mM), 0.2 mM each dNTP (Larova GmbH®), 1  $\mu$ M each selective primer pair (Table S2), 2.5 U Taq DNA polymerase, and 5  $\mu$ l of the diluted pre-selective amplification products. The selective PCR conditions were as follows: the DNA was denatured for 5 min at 95 °C then subjected to nine cycles: denaturation for 20 s at 95 °C, annealing for 30 s at 66 °C and elongation 3 min at 72 °C. The annealing temperature was lowered by 1 °C in each cycle. Following this, the PCR was subjected to 20 cycles: denaturation at 95 °C for 20 s, annealing at 56 °C for 30 s and elongation 72 °C for 3 min; the last elongation step lasted for 45 min at 72 °C.

### 2.6.3. Fragment and data analysis

Labeled selective AFLP PCR fragments were detected by capillary gel electrophoresis (CGE). PCR products (1  $\mu$ l) were combined with 0.04  $\mu$ l of Genescan 500 LIZ Size Standard (Applied Biosystems®) and HiDi formamide (10  $\mu$ l, Applied Biosystems®). CGE was carried out on an ABI PRISM™ 3730xl DNA Analyzer (50 cm POP 7 polymer capillary and a G5 filter). The raw data were collected with Peak Scanner Software version 1.0. (Applied Biosystems®) and analyzed using the following programs: optiFLP (Arthofer et al., 2011), tinyFLP (Arthofer, 2010), tinyCAT (Arthofer, 2010) and SplitsTree 4 (Huson and Bryant, 2006). The AFLP scoring parameters were optimized using optiFLP (Arthofer et al., 2011). Nine different parameters were examined and individually set for each primer pair in order to identify genuine bands



Fig. 1. Map indicating the sites where the *Leishmania donovani* strains examined in this study were isolated in Sudan and Ethiopia. This figure was adapted from Gelanew et al., 2010b.

and eliminate background noise. Of the nine parameters, minimum peak height and minimum peak size were determined by examining the negative control profile for a sample lacking DNA. The minimum peak height was set slightly above the highest value seen in the negative control profile, while minimum peak size was designated as bands showing at least 3-fold increase in signal to noise ratio relative to the negative control. Peaks ranging from 48 bp to a maximum of 350–500 bp, depending on the primer pair, were included in the analysis. tinyFLP (Arthofer, 2010) generates statistical data for all the bands allowing the user to identify: 1) samples with poor performance; 2) monomorphic bands that are present in all the samples and have no phylogenetic value, and 3) artifacts e.g., bands that appear in only one sample. Bins with rare alleles present only in one sample, as well as monomorphic bands that lack phylogenetic information, were removed from further analysis. tinyCAT was used to concatenate the binary allele matrices (BAM) for each sample, using the 6 different primer combinations, into one combined matrix (Arthofer, 2010). This combined BAM was used in all subsequent applications for phylogenetic analysis (Arthofer et al., 2011). A network tree containing 37 strains was generated using the program SplitsTree 4 (Huson and Bryant, 2006) by using Neighbor-net from 411 data points i.e., AFLP peaks (Bryant and Moulton, 2004).

Validation of the AFLP data and the phylogenetic tree derived by combined analysis using 6 primer pairs was carried out by bootstrapping (Holland et al., 2008). The reliability of AFLP markers was assessed by the error rate, which is the ratio of the number of mismatched loci to the total number of loci (Bonin et al., 2004; Ley and Hardy, 2013). Mismatches can be calculated within duplicates across all loci or for each locus across all duplicates (Bonin et al., 2004; Bonin et al., 2007; Zhang and Hare, 2012). Replicate error rate due to biological or technical causes was used to calculate the mismatch error rate using the formula stated in (Bonin et al., 2004; Bonin et al., 2007; Holland et al., 2008).

Technical error was evaluated using two approaches: 1) by performing duplicate selective AFLP PCRs using the same pre-selective

PCR product obtained from two strains MHOM/SD/1997/LEM3459 (SD8a and SD8b), and MHOM/ET/2009/GR353 (NE2a and NE2b), and 2) by performing the complete AFLP protocol on 25 different parasite genomic DNA samples using one selective primer pair (PstI + AG / TaqI + AA). The amplicon fragments were analyzed separately for each approach on individual capillary electrophoresis runs (Odiwuor et al., 2011). Biological error was determined by comparing, for one parasite strain NE11 (MHOM/ET/2010/GR363sp), the fragments generated after the AFLP PCR (pre-selective and selective PCR) procedure using pure DNA from three separate extractions. Only one set of selective PCR primers (PstI + AG / TaqI + AA) was tested, and all the products were analyzed by capillary gel electrophoresis at the same time (Odiwuor et al., 2011). Previous AFLP studies have shown that error rates, due to biological or technical origins, ranging from 2% to 5%, (Bonin et al., 2004; Bonin et al., 2007; Holland et al., 2008) are expected for this technique (Bonin et al., 2004). The calculated error due to biological or technical origins was 3.0%.

The concatenated BAM containing all the strains except *L. major* and two of the technical replicate control: SD8b and NE2b were analyzed using the software STRUCTURE (Pritchard et al., 2000) in three steps. Ten iterations were run for K1 to 10 after a burn-in of 100,000 simulations, using the options of admixture and correlated allele frequencies. The most suitable K number was calculated using Structure Harvester (Earl and Vonholdt, 2012) then the same analysis was run for another round on two (NE strains and SD MON-18 strains) of the 4 subpopulations, and K1 to 5/6 was checked using 10 iterations. A third round of analysis for SD MON-18 strains was performed using 10 iterations and K1 to 9.

### 3. Results

Genetic polymorphism of 33 *L. donovani* strains originating from the endemic region extending from eastern Sudan into northwestern Ethiopia (Fig. 1) was investigated by several techniques. Three strains from southern Ethiopia (SE), all from spleens, were included for

comparison. Most Sudanese (SD) strains originated from the village Barbar El Fugara, while the majority of Ethiopian strains originated from the Metema - Humera region (Dereure et al., 2003; Gelanew et al., 2010b; Pralong et al., 2001; Rougeron et al., 2011; Zackay et al., 2013) in northwestern Ethiopia. The Ethiopian strains are more recent in origin and were isolated from patients in 2009–2010, while most of SD strains were isolated 11–14 years earlier (Table S1). The parasites examined were isolated from patients with: VL, PKDL and HIV/VL co-infections. Strains were isolated from different organs including bone marrow ( $n = 6$ ), spleen ( $n = 10$ ), lymph nodes ( $n = 5$ ) and skin ( $n = 10$ ) (Dereure et al., 2003; Pralong et al., 2001; Zackay et al., 2013). HIV infection was absent in the SD patients (Dereure et al., 2003). Eight of the skin strains were isolated from PKDL patients and the remaining two from HIV/VL patients. The strains examined also included three parasite pairs, isolated from two different tissues of HIV/VL patients: either spleen and skin (2 pairs) or spleen and bone marrow (1 pair).

All the SD strains were originally typed by MLEE analysis (Dereure et al., 2003; Pralong et al., 2001) and Table S1); however, prior to AFLP they were re-examined by ITS-1 PCR-RFLP (Schonian et al., 2003), cpb E/F - (Zackay et al., 2013) and k26-PCR (Zackay et al., 2013). All the SD strains showed PCR and RFLP products characteristic of *L. donovani*; and a 290 bp k26 PCR amplicon typical of parasites isolated in SD and Northern Ethiopia (NE) (Zackay et al., 2013). Characterization of the Ethiopian strains by ITS-1-PCR RFLP, cpb E/F - and k26-PCR has already been described (Zackay et al., 2013).

One isolate from a PKDL patient, SD9 (MHOM/SD/97/LEM3472), showed an extra 239-bp band, a pattern previously described in a strain isolated from an Ethiopian PKDL patient (Gelanew et al., 2010a) carrying a mutation in the HaeIII restriction site, in addition to the three bands normally observed for *L. donovani* following HaeIII digestion of the ITS-1-PCR product (Fig. S1, panel A). We ruled out the possibility that SD9 represents a mixture of several parasite variants by carrying out RFLP analysis on a clone, and sequencing of ITS1-PCR amplicons (Fig. S1, panel B).

### 3.1. Amplified Fragment Length Polymorphisms (AFLP) alleles

AFLP analysis using six selective primer combinations (Taq + AA & PstI + AG, Taq + AC & PstI + AG, Taq + AA & PstI + GT, Taq + AC & PstI + TG, Taq + AG & PstI + TG and Taq + AC & PstI + CC; Table S2) was performed on 36 *L. donovani* strains from SD and Ethiopia, and *L. major* included as an outlier. These primer pairs were chosen because they gave the most intense PCR products and widest molecular weight range of products of all the 12 primer pairs examined in initial AFLP runs on six of the strains. Of the 456 AFLP alleles included in this study, 45 alleles (~10%) were monomorphic while the remaining 411 (90%) were polymorphic. A Neighbor-net network (Fig. 2) was built using the 411 polymorphic data points i.e., AFLP peaks. Strains GR353 (NE2a and NE2b) and LEM3459 (SD8a and SD8b) were used as internal controls. The selective PCR was performed in duplicate using the same pre-selective PCR product giving essentially identical replicates.

As can be seen in Fig. 2 strains from Southern Ethiopia (SE) group separately from the Northern Ethiopian and Sudanese (NE/SD) strains. The latter strains include parasites from VL (blue symbols), HIV/VL co-infected (red symbols) and PKDL (green symbols) patients, as well as two reference *L. donovani* strains (SD1 and SD2) isolated 66 and 48 years, respectively, prior to the other SD strains. Only 5 out of 33 NE/SD strains fail to cluster with the two main populations. These include two PKDL strains, SD3 and S15, from Barbar El Fugara that are found in group 1. Group 1 is strongly supported by a bootstrap value of 100%. These strains have the zymodemes, MON-82 and MON-30, respectively, and have been classified in the past by isoenzyme analysis as *L. archibaldi* and *L. infantum*, respectively (Dereure et al., 2003; Pralong et al., 2013), though characterization using other molecular markers recommended classification as *L. donovani* s.s (Jamjoom et al., 2004;

Lukes et al., 2007). They cluster differently from all the other SD strains. SD9 which has zymodeme MON-267 also fails to group with any of the SD strains examined. The zymodemes for the NE strains were not determined. The NE/SD strains were further divided into four groups. Group 2 contains all the MON-18 strains from Barbar El Fugara isolated in 1997/1998 (SD4 – SD8 and SD10 – SD14). This clade includes isolates from both VL (blue) and PKDL (green) patients. Finally, the two laboratory reference strains SD1 (Khartoum) and SD2 (1S Sudan) isolated in 1943 and 1962, respectively, clustered together with five NE strains (Group 3c) isolated in 2009–2010, rather than the SD strains from Barbar El Fugara. Most of the NE strains (16 out of 18) clustered in one large clade (group 3) that also contains the reference Sudanese strains mentioned above. The NE strains, isolated in 2009–2010, appear to be more polymorphic than the SD strains from Barbar El Fugara, and are distributed among several subpopulations. Interestingly, 5 out of 8 NE HIV/VL strains (NE11 – NE15) clustered together (group 3a), however four of these strains, NE11 – NE14, originated from different tissues, spleen (NE11 and NE13) or skin (NE12 and NE14), of only two patients. In a previous study on *L. donovani* genotypes in Ethiopia, identical multilocus microsatellite typing (MLMT) profiles were found for three different pairs of parasites, each pair originating from a single HIV/VL patient (spleen and skin or bone marrow and skin). These authors suggested that parasites in the skin of these patients disseminated from visceral tissues (Gelanew et al., 2011). Interestingly, NE15, the fifth strain in group 3a, also belongs to a matched pair isolated from one patient. However, in this case, NE15 (spleen) and NE16 (bone marrow) did not cluster together. These two isolates also differed in the size of their k26-PCR product. The amplicon for the spleen isolate is typical of NE strains (290 bp), while the amplicon for the bone marrow isolate is atypical for this region (410 bp) (Zackay et al., 2013). The remaining two HIV/VL strains (NE17 and NE18) isolated from spleens clustered in yet a third group (Fig. 2, group 3b). Interestingly, 5 out of 6 strains in group 3b were isolated from the spleen (NE2, NE3, NE9, NE17 and NE18). This group includes isolates from both VL and HIV/VL co-infected patients. The remaining five NE strains formed a third group (3c) that contains three bone marrow (NE1, NE4 and NE5) and two spleen isolates (NE7 and NE8).

The AFLP alleles for all the strains, except were also analyzed using Bayesian clustering by STRUCTURE (Pritchard et al., 2000). Only one technical control replicate for SD8 and NE2 was included in this analysis. Ten iterations were run for increasing values of  $K$  (1 – 10) using the default parameters. Four clusters were defined and stable at  $K = 4$ . Calculation of  $\Delta K$  using Structure harvester (Earl and Vonholdt, 2012) confirmed this value (Fig. 3, panel A left). The population distribution observed using STRUCTURE is very similar to that seen in the Neighbor-net graph in Fig. 2 with the 36 *L. donovani* strains distributed among four major populations (Fig. 3, panel A right) as follows: a) the SD MON-18 group, which only contains SD strains with this zymodeme; b) the SE group, which contains the three SE strains examined, and an atypical NE HIV/VL bone marrow strain (NE16) that is genetically similar to SE strains based on k26-PCR (410 bp amplicon) (Zackay et al., 2013) and SNP analysis (Zackay et al., 2018); c) the NE/SD group that contains 17 out of 18 NE strains, and three SD strains. The latter includes the reference strains SD1 and SD2, and the PKDL strain SD9 with zymodeme MON-267; and d) a small group containing only the two PKDL strains belonging to either zymodeme MON-82 or MON-30. The two major populations, a and c, were analyzed separately by STRUCTURE to check for hidden structures within these groups. Two subpopulations (a1 and SD8) in population a containing the SD MON-18 strains, and four (c1 – c3 and SD9) in population c containing NE/SD strains were identified (Fig. 3, panel B). The c subpopulations contained the following strains: c1 - bone marrow (NE1, NE4 and NE6) and spleen strains from VL patients (NE7, NE8), as well as the reference strain SD2; c2 - spleen and bone marrow strains from VL patients (NE2, NE3, NE9 and NE5, NE10, respectively), strains from HIV/VL (NE17 and NE18) patients, and the reference strain SD1; c3 - spleen and skin strains

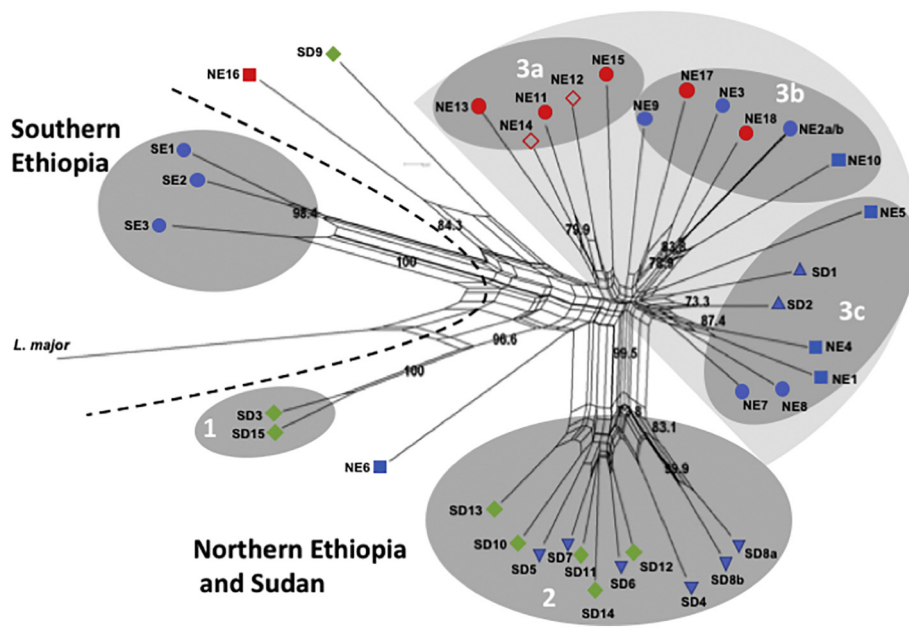


Fig. 2. Neighbor-net splits graph derived from combined analysis of AFLP using six selective primers. Results were analyzed using optiFLP (Arthofer et al., 2011) and tinyFLP (Arthofer, 2010), and the binary matrices concatenated using tinyCAT (Arthofer, 2010). The tree above was built using Neighbor-net analysis of the concatenated binary matrix with Splitstree 4 (Huson and Bryant, 2006). The numbers above each branch indicate the bootstrap support in percentage from 1000 replicates. SD1 and SD2 are reference strains from Sudan that were isolated in 1943 and 1962, respectively. Strains NE2a and NE2b, as well as SD8a and SD8b, are technical duplicates. Selective PCRs for these strains were run in duplicate using the same pre-selective PCR product. Strain origin: Northern Ethiopia (NE) groups 3a, 3b and 3c, Southern Ethiopia (SE) group1, and Sudan (SD) groups 2 and 3c. Clinical presentation: VL – blue, HIV/VL co-infection – red, PKDL – green. Tissue source: skin isolates – both full and empty diamonds, spleen isolates - circles, lymph node -inverted triangle, bone marrow isolates - squares, and no information - pyramid. *Leishmania major* was included as an outlier. (For interpretation of the references to colour in this figure legend, the reader is referred to the web version of this article.)

isolated from the same two Ethiopian HIV/VL patients (NE11 - NE14), as well as the spleen HIV/VL strain NE15.

A third and last round of analysis was performed on all the SD/MON-18 strains in subpopulation a1. Nine iterations were run for

increasing values of K (1–9) using the default parameters. Calculation of  $\Delta K$  (Fig. 3, panel C left) using Structure harvester (Earl and Vonholdt, 2012) suggested the presence of additional substructures which included one major cluster a1 containing five strains. Each of the

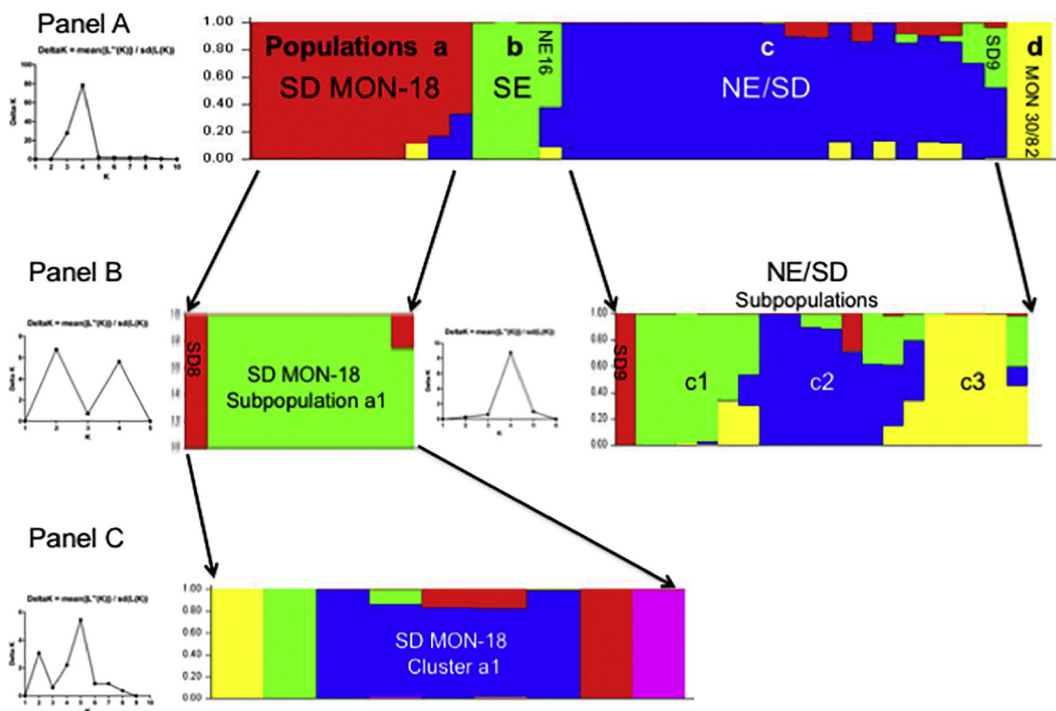
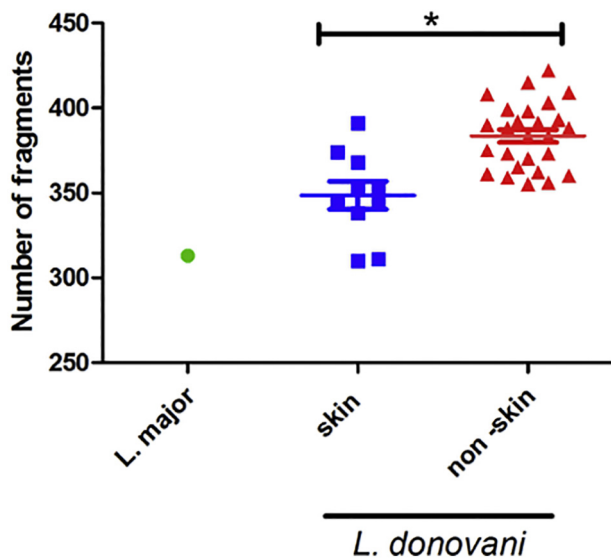


Fig. 3. Population analysis of the 36 east African *Leishmania donovani* strains as determined by STRUCTURE (Pritchard et al., 2000) based on AFLP using six selective primers. A single vertical bar represents each strain with the different colors indicating to the fraction of genotype attributed by each population (Q). A single colour indicates that a strain belongs to only one genetic group. Population parameters were estimated by 10 Markov Chain Monte Carlo iterations after a burn-in of 100,000 simulations. Panel A. At K = 4 the strains group into four distinct populations which was confirmed by  $\Delta K$  analysis, plot on left, using Structure Harvester (Earl and Vonholdt, 2012): a) SD MON-18 - all 10 Sudanese MON-18 strains; b) SE - the southern Ethiopian strains plus one atypical northern Ethiopian (NE) HIV/VL bone marrow strain (NE16); c) NE/SD - 17/18 NE strains and three of the SD strains: PKDL strain SD9 (MON-267), SD1 and SD2; and d) MON30/82 –PKDL strains SD3 and SD15 with zymodemes MON-82 and MON-30, respectively. Panel B. Further analysis of SD MON-18 and NE/SD by STRUCTURE identified additional subgroups. Subpopulation a1 contains all of the SD MON-18 strains except SD8, while the NE/SD population was divided into four subpopulations: c1 - NE1, NE4, NE6 - NE8 and SD2; c2 - NE2, NE3, NE5, NE9, NE10, NE17, NE18 and SD1; c3 - NE11 - NE15; and a fourth group containing the PKDL isolate SD9 (zymodeme MON-267). Panel C. Further analysis of SD MON-18 subpopulation a1. Cluster a1 contains SD6 SD7, SD10, SD11 and SD12.



**Fig. 4.** Number of AFLP alleles for skin and non-skin *Leishmania* strains. AFLP analysis using six selective primers was performed on 36 *L. donovani* and one *L. major* strains. The total number of polymorphic AFLP fragments was plotted according to tissue from which strain was cultured. Skin: 10 strains were isolated from the skin of northern Ethiopian HIV/VL and Sudanese PKDL patients. Non-skin: 26 strains were isolated from the spleen, bone marrow and lymph nodes of VL and HIV/VL patients from Sudan and Ethiopia. Skin isolates (average 10 strains =  $348.6 \pm 8.1$ ), VL strains (average 26 strains =  $383.5 \pm 3.8$ ). \*unpaired *t*-test,  $p < 0.0001$ .

remaining strains (SD13, SD5, SD4 and SD14) grouped separately.

The total polymorphic AFLP allele number using 6 pairs of primers for each strain examined is plotted in Fig. 4. The skin group includes strains isolated from the skin of HIV/VL and PKDL patients, while the non-skin group includes strains isolated from the spleen, bone marrow or lymph nodes of VL patients from SD, SE & NE; and from HIV/VL patients in NE. Interestingly, skin isolates have significantly fewer polymorphic AFLP fragments (average 10 strains =  $348.6 \pm 8.1$ ) than VL strains (average 26 strains =  $383.5 \pm 3.8$ ) regardless of the year of the isolation or the place of origin (95% CI difference in means = 18.86 to 50.94, unpaired *t*-test,  $p < 0.0001$ ). Further work is needed to confirm whether strains isolated from the skin show lower genetic complexity than strains isolated from internal organs.

### 3.2. Kinetoplast DNA sequences

kDNA minicircles are highly polymorphic (Rogers and Wirth, 1987), and both kDNA RFLP and sequencing have been used to examine *Leishmania* genotypes (Bhattarai et al., 2010; Cortes et al., 2006; Cuervo et al., 2004; Laurent et al., 2007). The complete minicircle was amplified using PCR primers to conserved regions, cloned and sequenced. The minicircle sequences were aligned and the distribution of the genotypes examined. The dendrogram based on analysis of minicircle kDNA sequences (Fig. 5) differed from that obtained by AFLP based on genomic DNA (Fig. 2). Unlike the latter case where the strains were distributed into major clades, SE and SD/NE, according to geographical origin or within the SD/NE population, by year of isolation, this was not observed using kDNA sequence analysis. Instead the strains were distributed in no particular order or pattern among four groups A - D. Group A was the most heterogeneous including sixteen strains isolated from all the tissues examined (spleen, lymph node, skin and bone marrow); from SD and NE; and from HIV co-infected (red), PKDL (green) and VL (blue) patients. Group B was comprised of five strains, three from NE and two from SD. The kDNA sequences of NE15 and the reference strain, SD2, are identical even though they were isolated 47 years apart. Group C contained eight strains the majority of which,

six, were from NE. Interestingly, five of the strains in this group, isolated from spleens of VL patients (NE2, NE7, NE8, NE17 and NE18), have almost identical kDNA minicircle sequences ( $> 98.3\%$ ). The remaining three strains were isolated from the skin (two PKDL and one HIV/VL co-infection). Finally, Group D contains 6 strains. This group is highly heterogeneous containing strains from NE, SE and SD, as well as VL, PKDL and HIV/VL co-infected patients. No information describing the tissue source for the SD1 or SD2 strains was found in the literature, but they were likely isolated from spleen or bone marrow, and not skin.

Parasites isolated from skin or spleen of identical patients (NE11 and NE12; and NE13 and NE14) grouped in different branches in the kDNA minicircle tree, unlike the AFLP where all four strains clustered together (Fig. 2), and by Southern blotting where isolates from the same patient had identical profiles (Fig. S2, panel B).

### 3.3. Southern blot analysis

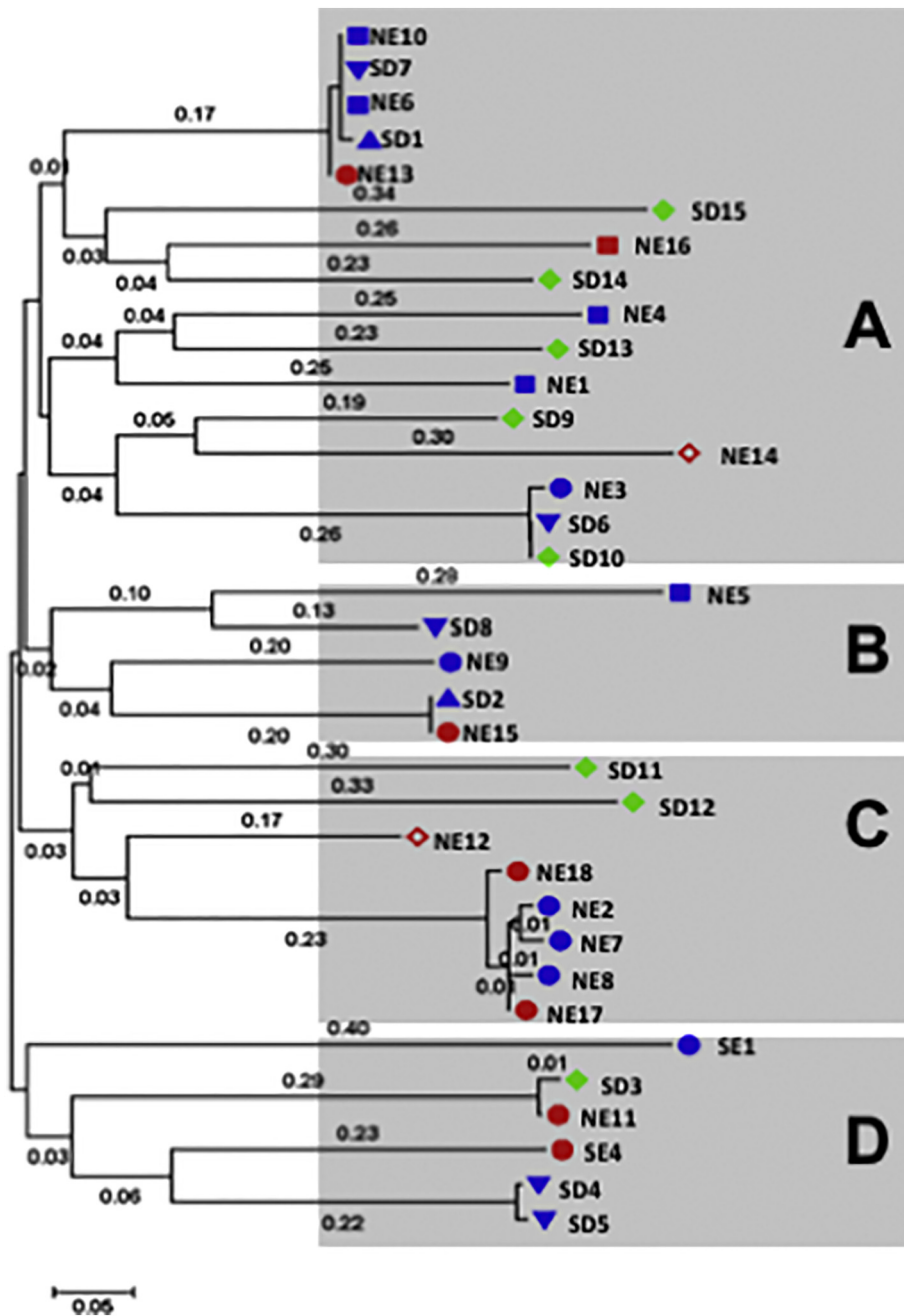
An earlier study suggested that Southern blotting using a DNA probe to the *L. donovani* 28S ribosomal RNA (28S rRNA)  $\zeta$  and  $\epsilon$  subunits could differentiate between parasites isolated from Indian VL (spleen) and PKDL (skin) patients (Sreenivas et al., 2004). A similar probe (Ld28S) was used to examine strains belonging to zymodeme MON-18 isolated from SD VL (lymph node) and PKDL (skin) patients (Fig. S2, panel A), as well as NE strains isolated from different tissues, skin and spleen, of the same patients (Fig. S2, panel B). Only minor differences in the Southern blotting patterns were observed among the SD parasites regardless of the clinical pathology, VL or PKDL. Indeed, with the exception of SD4 and SD8 (Panel A) the patterns looked almost identical, and differences observed for strain SD4 may be due to the low labeling intensity. In addition, no specific band or pattern, as previously suggested for Indian VL and PKDL strains (Sreenivas et al., 2004), was observed that differentiates between SD VL and PKDL strains. Interestingly, the VL strain SD8 also did not group with the SD MON-18 subpopulation a1 when analyzed by STRUCTURE (Fig. 3). Likewise, when matched strains, taken at the same time from different tissues in two HIV/VL NE patients (NE11 / NE12 and NE13 / NE14), were examined (Fig. S2, panel B), the patterns obtained for the spleen and skin isolates from each patient appeared essentially identical, while the banding patterns between parasites from the two patients were different.

## 4. Discussion

In this study, 36 East African *L. donovani* strains were examined by AFLP generating 411 polymorphic markers that were used for analysis of genetic diversity. The population distribution obtained by Neighbor-net (Fig. 2) and STRUCTURE (Fig. 3) analysis of the AFLP alleles was similar. The SE strains, using both methods, consistently grouped together and separate from the SD/NE strains, which were split into several subpopulations. Geographic separation of the SE and SD/NE *L. donovani* strains is congruent with other molecular genetic techniques such as MLMT (Gelanew et al., 2010b; Kuhls et al., 2007) and SNP analysis of whole genome sequences (Zackay et al., 2018). This also supports previous AFLP results using a limited number of East African strains (Odiwuor et al., 2011). This finding is perhaps not surprising, as the biotopes and vectors that transmit these parasites are different between the two regions. In addition, patients with VL in NE/SD and SE were shown to respond differently to drug treatment.

STRUCTURE analysis divides the East African panel of *L. donovani* from NE and SD into three distinct populations a, c and d as seen in Fig. 3. These populations also appear as distinct groups in the Neighbor-net graph (groups 1–3) and are supported by high bootstrapping values. The SE strains also group as a separate population, b, by STRUCTURE analysis. Subpopulation a1 contains all the Sudanese MON-18 isolates. These strains were isolated from both VL and PKDL patients in the village of Barbar El Fugara during a two-year period. The VL and PKDL





**Fig. 5.** Phylogenetic tree of East African *Leishmania donovani* strains based on analysis of kDNA minicircle sequences. The sequences (GeneBank accession numbers KY950645 to KY950679) were aligned using Muscle algorithm with gaps, and the phylogenetic tree was built using the Maximum Likelihood method based on the Hasegawa-Kishino-Yano model (Hasegawa et al., 1985) using MEGA7 (Kumar et al., 2016) as described in Material and Methods. The tree is drawn to scale, with branch lengths measured in the number of substitutions per site (next to the branches). Strain origin: Northern (NE) or Southern Ethiopia (SE), Sudan (SD). Clinical presentation: VL – blue, HIV/VL co-infection – red, PKDL – green. Tissue source: skin isolates – full and empty diamonds, spleen isolates - circles, lymph node -inverted triangle, bone marrow isolates - squares, and no information - pyramid. Strains included in Group A – NE1, NE3, NE4, NE6, NE10, NE13, NE14, NE16, SD1, SD6, SD7, SD9, SD10, SD13 - SD15; Group B –NE5, NE9, NE15, SD2 and SD8; Group C – NE2, NE7, NE8, NE12, NE17, NE18, SD11 and SD12; Group D –NE11, SD3, SD4, SD5, SE1 and SE4. (For interpretation of the references to colour in this figure legend, the reader is referred to the web version of this article.)

isolates were interspersed suggesting that parasites causing these different clinical symptoms are highly similar. Population c contains all of the NE strains, except for NE16 that appeared to group with the SE strains. The latter isolate was more similar to SE strains when genome-wide SNP analysis of Ethiopian *L. donovani* strains was carried out (Zackay et al., 2018). The further distribution of population c among three subpopulations (c1 - c3) was supported by the almost identical grouping of these strains by the Neighbor-net analysis into three clusters 3a, 3b and 3c. Interestingly, the two reference strains SD1 and SD2 also group with the NE isolates in population c, similar to what is observed in the Neighbor-net graph. Finally, population d consists of only two SD PKDL strains, SD3 (MON-82) and SD15 (MON-30) and is supported by a 100% bootstrap value (Group 1, Fig. 2).

Analysis of the AFLP markers failed to group the East African *L. donovani* strains according to clinical symptoms, since PKDL and other skin isolates (NE12 and NE14) were interspersed among the VL isolates from lymph nodes, bone marrows and spleens. Lack of grouping by

clinical symptoms was also found when *L. donovani* strains from East Africa were examined by MLMT and MLST (Baleela et al., 2014). However, it is interesting to note that the number of polymorphic AFLP fragments in skin strains is lower than for the non-skin strains, regardless of the year or site of isolate origin. AFLP allele number was also lower in *L. (V.) peruviana* which only causes CL compared to the *L. (V.) braziliensis* which causes both CL and the mucocutaneous form (Odiwuor et al., 2012). This simpler genetic profile may arise from (i) changes in enzyme restriction site distribution due to point mutations; and (ii) gene rearrangements caused by amplification/deletion of repetitive sequences (Lighthall and Giannini, 1992) or DNA recombination (Liu et al., 1992). Thus, the finding that *L. donovani* skin isolates have lower number of polymorphic AFLP fragments than non-skin isolates warrants further investigation.

kDNA minicircle sequencing was also used to examine genetic diversity of all the East African *L. donovani* strains. A high degree of polymorphism was observed using this approach where the isolates

were distributed among four different groups (A – D). Unlike with AFLP, no connection to geographic origin was observed and the SD, NE and SE strains were mixed among most of the clusters. Moreover, there appeared to be no association between parasite tissue origin and group. The PKDL and other skin isolates were distributed throughout three of the four clusters. While only one kDNA minicircle sequence per strain was examined in this study, each parasite strain actually contains multiple, varying minicircle sequence classes (Simpson et al., 2015). In addition, the percentage of individual minicircle classes is known to change during continuous long-term culture potentially affecting analysis of leishmanial genetic diversity (Simpson et al., 2000). Further studies, using Next Generation Sequencing of PCR products directly amplified from lesion biopsy material, would allow for accurate, in-depth evaluation of different kDNA minicircle classes and their sequences without need to culture parasites.

Interestingly, kDNA minicircle sequencing (Fig. 5) discriminated between pairs of isolates taken from the skin and spleen of the same HIV/VL co-infected patient, unlike AFLP and Southern blotting where each pair was essentially identical. While we can't exclude the possibility that the differences observed in kDNA minicircle sequences for each skin/spleen pair originates from subcloning the PCR products prior to sequencing, kDNA PCR-RFLP analysis shows different patterns for the spleen (NE11 and NE13) and skin (NE12 and NE14) strains of each patient indicating that these strains contain kDNA minicircle classes with different sequences (Fig. S3). A similar result was seen when spleen (NE15) and bone marrow (NE16) isolates from the HIV/VL co-infected patient LDS373/08 were analyzed by kDNA PCR-RFLP. Interestingly, cluster analysis, based on chromosome copy number, grouped the skin and spleen strain pairs (NE12 and NE14; NE11 and NE13, respectively) separately based on tissue source (Zackay et al., 2018). While the presence of mixed tissue infections and subsequent selection of distinct lines by culture passage of primary isolates prior to analysis cannot be ruled out, these results suggest that parasite residence in the distinct tissue environments can lead to selection of different kDNA minicircle classes. Similarly, kDNA PCR-RFLP was also shown to differentiate between pairs of cutaneous and mucosal *L. (Viannia)* strains isolated from the same patients (Cuervo et al., 2004). Searching the literature, we have found only one report indicating the relationship between kDNA and tropism where the authors cloned a kinetoplast DNA mini-fragment from *Leishmania* strains that hybridized only to strains from PKDL patients and not to strains from VL patients (Das Gupta et al., 1991).

On the other hand, the strain pair NE15 and NE16 isolated at the same time from spleen and bone marrow, respectively, of an HIV/VL co-infected patient, appears to be the result of a mixed infection showing different genotypes by AFLP, kDNA sequencing, whole genome SNP analysis and k26 –PCR (this study; Zackay et al., 2013; Zackay et al., 2018). Mixed infections in a Brazilian HIV/VL co-infected patient have been described where parasites isolated from the bone marrow and skin were typed as *L. infantum* MON-1 and *L. donovani* MON-2, respectively (Scaglia et al., 1996). Similarly, *L. infantum* parasites with two different zymodemes, MON-1 and MON-77, were isolated simultaneously from the skin and lymph nodes of a dog with diffuse leishmaniasis (Pratlong et al., 1989).

Finally, our results agree with the previous studies investigating strains collected from the same outbreak that occurred in the 1990s in the village Barbar El Fugara (Dereure et al., 2003; El-Safi et al., 2002; Pratlong et al., 2001; Rougeron et al., 2011). Of the seven zymodemes circulating in the VL endemic area in eastern SD, four zymodemes were isolated from PKDL and VL patients (MON-18, MON-30, MON-267 and MON-82) suggesting no association between a particular zymodeme and the risk of developing PKDL (Dereure et al., 2003; Pratlong et al., 2001; Rougeron et al., 2011; Zijlstra and El-Hassan, 2001). Similarly, when PCR single-strand conformation polymorphism was used to examine the SD strains, no correlation was found with the clinical manifestations of VL and PKDL (El Tai et al., 2001). Analysis of strains from

Barbar El Fugara by MLMT or MLST showed that parasites from both VL and PKDL patients clustered in the same branches of the tree (Baleela et al., 2014; Rougeron et al., 2011). Similarly, AFLP analysis grouped most of the VL and PKDL strains from this focus together.

Even though we attempted to limit possible confounding factors (zymodeme, location, years collected) for the Sudanese strains examined, information on the development of PKDL in the VL patients, and the corresponding parasite strains, are lacking. Thus, it is very possible that unidentified genetic factors play a role in PKDL development. Comparison of paired VL and PKDL strains sequentially collected from individual patients, as well as strains from VL patients which never develop PKDL, by techniques such as whole genome sequencing is needed. Unfortunately, such paired strains are frequently difficult to acquire, and most results reported to date suggest that the development of PKDL is correlated with other factors (Dereure et al., 2003; El-Safi et al., 2002).

To our knowledge, this is the first time that AFLP and kDNA minicircle sequencing was used to differentiate between East African *L. donovani* strains isolated from different organs. AFLP has proved to be a powerful technique for inferring phylogenetic relationships within a *Leishmania* species isolated from different geographic regions, but similar to MLMT and MLST, was not able to identify genetic associations with the clinical outcome. On the contrary, kDNA minicircle sequences yielded a completely different phylogenetic distribution of the strains, which was not associated with geographic origin. No correlation between the two techniques was observed. Further analysis of additional East African *L. donovani* strains from different tissue sources and from patients with varying clinical presentations are needed to substantiate these findings, as only a limited number of strains (36) from restricted geographic regions, and years of isolation were examined in this study. However, these preliminary results pave the way for more research aimed at understanding the genetic determinants and the underlying biology of tropism in this parasite.

Supplementary data to this article can be found online at <https://doi.org/10.1016/j.meegid.2018.07.016>.

## Acknowledgements

All 'LEM' strains from Sudan were isolated by Dr. Jacques Dereure (French National Reference Center for Leishmanioses, Montpellier, France). This work was supported by grant OPPGH5336 from the Bill and Melinda Gates Foundation to A.H. and C.L.J.

The authors would like to thank Dr. Wolfgang Arthofer, University of Innsbruck, Innsbruck, Austria for his help and useful discussion regarding the programs optiFLP, tinyFLP, and tinyCAT. C.L.J. holds the Michael and Penny Feiweil Chair of Dermatology.

## References

- Alonso, D.P., Costa, D.L., de Mendonca, I.L., Costa, C.H., Ribolla, P.E., 2010. Heterogeneity of *Leishmania infantum chagasi* kinetoplast DNA in Teresina (Brazil). *Am. J. Trop. Med. Hyg.* 82, 819–821.
- Alvar, J., Bashaye, S., Argaw, D., Cruz, I., Aparicio, P., Kassa, A., Orfanos, G., Parreno, F., Babaniyi, O., Gudeta, N., Canavate, C., Bern, C., 2007. Kala-azar outbreak in Libo Kemkem, Ethiopia: epidemiologic and parasitologic assessment. *Am. J. Trop. Med. Hyg.* 77, 275–282.
- Alvar, J., Aparicio, P., Aseffa, A., Den Boer, M., Canavate, C., Dedet, J.P., Gradoni, L., Ter Horst, R., Lopez-Velez, R., Moreno, J., 2008. The relationship between leishmaniasis and AIDS: the second 10 years. *Clin. Microbiol. Rev.* 21, 334–359.
- Alvar, J., Vélez, I.D., Bern, C., Herrero, M., Desjeux, P., Cano, J., Jannin, J., den Boer, M., Team, W.L.C., 2012. Leishmaniasis worldwide and global estimates of its incidence. *PLoS One* 7, e35671.
- Anders, G., Eisenberger, C.L., Jonas, F., Greenblatt, C.L., 2002. Distinguishing *Leishmania tropica* and *Leishmania major* in the Middle East using the polymerase chain reaction with kinetoplast DNA-specific primers. *Trans. R. Soc. Trop. Med. Hyg.* 96, S87–S92 Suppl 1.
- Arthofer, W., 2010. tinyFLP and tinyCAT: software for automatic peak selection and scoring of AFLP data tables. *Mol. Ecol. Resour.* 10, 385–388.
- Arthofer, W., Schlick-Steiner, B.C., Steiner, F.M., 2011. optiFLP: software for automated optimization of amplified fragment length polymorphism scoring parameters. *Mol. Ecol. Resour.* 11, 1113–1118.

- Baleela, R., Llewellyn, M.S., Fitzpatrick, S., Kuhls, K., Schonian, G., Miles, M.A., Mauricio, I.L., 2014. *Leishmania donovani* populations in Eastern Sudan: temporal structuring and a link between human and canine transmission. *Parasit. Vectors* 7, 496.
- Bañuls, A.L., Bastien, P., Pomares, C., Arevalo, J., Fisa, R., Hide, M., 2011. Clinical pleiomorphism in human leishmaniases, with special mention of asymptomatic infection. *Clin. Microbiol. Infect.* 17, 1451–1461.
- Bhattachari, N.R., Dujardin, J.C., Rijal, S., De Doncker, S., Boelaert, M., Van der Auwera, G., 2010. Development and evaluation of different PCR-based typing methods for discrimination of *Leishmania donovani* isolates from Nepal. *Parasitology* 137, 947–957.
- Bonin, A., Bellemain, E., Bronken Eidesen, P., Pompanon, F., Brochmann, C., Taberlet, P., 2004. How to track and assess genotyping errors in population genetics studies. *Mol. Ecol.* 13, 3261–3273.
- Bonin, A., Ehrlich, D., Manel, S., 2007. Statistical analysis of amplified fragment length polymorphism data: a toolbox for molecular ecologists and evolutionists. *Mol. Ecol.* 16, 3737–3758.
- Bryant, D., Moulton, V., 2004. Neighbor-net: an agglomerative method for the construction of phylogenetic networks. *Mol. Biol. Evol.* 21, 255–265.
- Collin, S., Davidson, R., Ritmeijer, K., Keus, K., Melaku, Y., Kipnetich, S., Davies, C., 2004. Conflict and kala-azar: determinants of adverse outcomes of kala-azar among patients in southern Sudan. *Clin. Infect. Dis.* 38, 612–619.
- Consortium, M., 2010. Leishmaniasis control in eastern Africa: past and present efforts and future needs. In: *Situation and Gap Analysis*, (November 2010).
- Corpet, F., 1988. Multiple sequence alignment with hierarchical clustering. *Nucleic Acids Res.* 16, 10881–10890.
- Cortes, S., Mauricio, I., Almeida, A., Cristovao, J.M., Pralong, F., Dedet, J.P., Campino, L., 2006. Application of kDNA as a molecular marker to analyse *Leishmania infantum* diversity in Portugal. *Parasitol. Int.* 55, 277–283.
- Cuervo, P., Cupolillo, E., Nehme, N., Hernandez, V., Saravia, N., Fernandes, O., 2004. *Leishmania (Viannia)*: genetic analysis of cutaneous and mucosal strains isolated from the same patient. *Exp. Parasitol.* 108, 59–66.
- Das Gupta, S., Ghosh, D.K., Majumder, H.K., 1991. A cloned kinetoplast DNA mini-circle fragment from a *Leishmania* spp. specific for post-kala-azar dermal leishmaniasis strains. *Parasitology* 102 (Pt 2), 187–191.
- Dereure, J., El-Safi, S.H., Bucheton, B., Boni, M., Kheir, M.M., Davoust, B., Pralong, F., Feugier, E., Lambert, M., Dessein, A., Dedet, J.P., 2003. Visceral leishmaniasis in eastern Sudan: parasite identification in humans and dogs; host-parasite relationships. *Microbes Infect.* 5, 1103–1108.
- Dey, A., Singh, S., 2007. Genetic heterogeneity among visceral and post-Kala-Azar dermal leishmaniasis strains from eastern India. *Infect. Genet. Evol.* 7, 219–222.
- Diro, E., Lynen, L., Ritmeijer, K., Boelaert, M., Hailu, A., van Griensven, J., 2014. Visceral Leishmaniasis and HIV coinfection in East Africa. *PLoS Negl. Trop. Dis.* 8, e2869.
- Downing, T., Imamura, H., Decuyper, S., Clark, T.G., Coombs, G.H., Cotton, J.A., Hilley, J.D., de Doncker, S., Maes, I., Mottram, J.C., Quail, M.A., Rijal, S., Sanders, M., Schonian, G., Stark, O., Sundar, S., Vanaerschot, M., Hertz-Fowler, C., Dujardin, J.C., Berriman, M., 2011. Whole genome sequencing of multiple *Leishmania donovani* clinical isolates provides insights into population structure and mechanisms of drug resistance. *Genome Res.* 21, 2143–2156.
- Downing, T., Stark, O., Vanaerschot, M., Imamura, H., Sanders, M., Decuyper, S., de Doncker, S., Maes, I., Rijal, S., Sundar, S., Dujardin, J.C., Berriman, M., Schonian, G., 2012. Genome-wide SNP and microsatellite variation illuminate population-level epidemiology in the *Leishmania donovani* species complex. *Infect. Genet. Evol.* 12, 149–159.
- Earl, D.A., Vonholdt, B.M., 2012. STRUCTURE HARVESTER: a website and program for visualizing STRUCTURE output and implementing the Evanno method. *Conserv. Genet. Resour.* 4, 359–361.
- El Tai, N.O., El Fari, M., Mauricio, I., Miles, M.A., Oskam, L., El Safi, S.H., Presber, W.H., Schonian, G., 2001. *Leishmania donovani*: intraspecific polymorphisms of Sudanese isolates revealed by PCR-based analyses and DNA sequencing. *Exp. Parasitol.* 97, 35–44.
- El-Hassan, A.M., Zijlstra, E.E., Ismael, A., Ghalib, H.W., 1995. Recent observations on the epidemiology of kala-azar in the eastern and central states of the Sudan. *Trop. Geogr. Med.* 47, 151–156.
- Elnaiem, D.E., 2011. Ecology and control of the sand fly vectors of *Leishmania donovani* in East Africa, with special emphasis on *Phlebotomus orientalis*. *J. Vector Ecol.* 36 (Suppl 1), S23–S31.
- Elnaiem, D.E., Schorscher, J., Bendall, A., Obsomer, V., Osman, M.E., Mekki, A.M., Connor, S.J., Ashford, R.W., Thomson, M.C., 2003. Risk mapping of visceral leishmaniasis: the role of local variation in rainfall and altitude on the presence and incidence of kala-azar in eastern Sudan. *Am. J. Trop. Med. Hyg.* 68, 10–17.
- El-Safi, S.H., Bucheton, B., Kheir, M.M., Musa, H.A., El-Obaid, M., Hammad, A., Dessein, A., 2002. Epidemiology of visceral leishmaniasis in Atbara River area, eastern Sudan: the outbreak of Barbar El Fugara village (1996–1997). *Microbes Infect.* 4, 1439–1447.
- Garin, Y.J., Meneceur, P., Sulahian, A., Derouin, F., 2002. Microplate method for obtaining *Leishmania* clonal populations. *J. Parasitol.* 88, 803–804.
- Gelanew, T., Amogne, W., Abebe, T., Kuhls, K., Hailu, A., Schonian, G., 2010a. A clinical isolate of *Leishmania donovani* with ITS1 sequence polymorphism as a cause of para-kala-azar dermal leishmaniasis in an Ethiopian human immunodeficiency virus-positive patient on highly active antiretroviral therapy. *Br. J. Dermatol.* 163, 870–874.
- Gelanew, T., Kuhls, K., Hurissa, Z., Weldegebreal, T., Hailu, W., Kassahun, A., Abebe, T., Hailu, A., Schönian, G., 2010b. Inference of population structure of *Leishmania donovani* strains isolated from different Ethiopian visceral leishmaniasis endemic areas. *PLoS Negl. Trop. Dis.* 4, e889.
- Gelanew, T., Hurissa, Z., Diro, E., Kassahun, A., Kuhls, K., Schonian, G., Hailu, A., 2011. Disseminated cutaneous leishmaniasis resembling post-kala-azar dermal leishmaniasis caused by *Leishmania donovani* in three patients co-infected with visceral leishmaniasis and human immunodeficiency virus/acquired immunodeficiency syndrome in Ethiopia. *Am. J. Trop. Med. Hyg.* 84, 906–912.
- Haile, T., Anderson, S.D., 2006. Visceral leishmaniasis in northern Ethiopia. *East Afr. Med. J.* 83, 389–392.
- Hasegawa, M., Kishino, H., Yano, T., 1985. Dating of the human-ape splitting by a molecular clock of mitochondrial DNA. *J. Mol. Evol.* 22, 160–174.
- Holland, B.R., Clarke, A.C., Meudt, H.M., 2008. Optimizing automated AFLP scoring parameters to improve phylogenetic resolution. *Syst. Biol.* 57, 347–366.
- Hurissa, Z., Gebre-Silassie, S., Hailu, W., Tefera, T., Lalloo, D.G., Cuevas, L.E., Hailu, A., 2010. Clinical characteristics and treatment outcome of patients with visceral leishmaniasis and HIV co-infection in northwest Ethiopia. *Tropical Med. Int. Health* 15, 848–855.
- Huson, D.H., Bryant, D., 2006. Application of phylogenetic networks in evolutionary studies. *Mol. Biol. Evol.* 23, 254–267.
- Jamjoom, M.B., Ashford, R.W., Bates, P.A., Chance, M.L., Kemp, S.J., Watts, P.C., Noyes, H.A., 2004. *Leishmania donovani* is the only cause of visceral leishmaniasis in East Africa; previous descriptions of *L. infantum* and "*L. archibaldi*" from this region are a consequence of convergent evolution in the isoenzyme data. *Parasitology* 129, 399–409.
- Jensen, R.E., Englund, P.T., 2012. Network news: the replication of kinetoplast DNA. *Annu. Rev. Microbiol.* 66, 473–491.
- Kuhls, K., Keilonat, L., Ochsenreither, S., Schaar, M., Schweynoch, C., Presber, W., Schonian, G., 2007. Multilocus microsatellite typing (MLMT) reveals genetically isolated populations between and within the main endemic regions of visceral leishmaniasis. *Microbes Infect.* 9, 334–343.
- Kumar, A., Boggula, V.R., Sundar, S., Shasany, A.K., Dube, A., 2009. Identification of genetic markers in sodium antimony gluconate (SAG) sensitive and resistant Indian clinical isolates of *Leishmania donovani* through amplified fragment length polymorphism (AFLP). *Acta Trop.* 110, 80–85.
- Kumar, A., Boggula, V.R., Misra, P., Sundar, S., Shasany, A.K., Dube, A., 2010. Amplified fragment length polymorphism (AFLP) analysis is useful for distinguishing *Leishmania* species of visceral and cutaneous forms. *Acta Trop.* 113, 202–206.
- Kumar, S., Stecher, G., Tamura, K., 2016. MEGA7: molecular evolutionary genetics analysis version 7.0 for bigger datasets. *Mol. Biol. Evol.* 33, 1870–1874.
- Laurent, T., Rijal, S., Yardley, V., Croft, S., De Doncker, S., Decuyper, S., Khanal, B., Singh, R., Schönian, G., Kuhls, K., Chappuis, F., Dujardin, J.C., 2007. Epidemiological dynamics of antimonial resistance in *Leishmania donovani*: genotyping reveals a polyclonal population structure among naturally-resistant clinical isolates from Nepal. *Infect. Genet. Evol.* 7, 206–212.
- Ley, A.C., Hardy, O.J., 2013. Improving AFLP analysis of large-scale patterns of genetic variation—a case study with the Central African lianas *Haumania* spp (Marantaceae) showing interspecific gene flow. *Mol. Ecol.* 22, 1984–1997.
- Lighthall, G.K., Giannini, S.H., 1992. The chromosomes of *Leishmania*. *Parasitol. Today* 8, 192–199.
- Liu, J., Salinas, G., Gajendran, N., Muthui, D., Muyldermans, S., Hamers, R., 1992. DNA recombination associated with short direct repeats in *Leishmania mexicana* M379. *Mol. Biochem. Parasitol.* 50, 351–353.
- Lukes, J., Mauricio, I.L., Schonian, G., Dujardin, J.C., Soteriadou, K., Dedet, J.P., Kuhls, K., Tintaya, K.W., Jirku, M., Chocholeova, E., Haralambous, C., Pralong, F., Obornik, M., Horak, A., Ayala, F.J., Miles, M.A., 2007. Evolutionary and geographical history of the *Leishmania donovani* complex with a revision of current taxonomy. *Proc. Natl. Acad. Sci. U. S. A.* 104, 9375–9380.
- Lyons, S., Veeken, H., Long, J., 2003. Visceral leishmaniasis and HIV in Tigray, Ethiopia. *Tropical Med. Int. Health* 8, 733–739.
- Mauricio, I.L., Yeo, M., Baghaei, M., Doto, D., Pralong, F., Zemanova, E., Dedet, J.P., Lukes, J., Miles, M.A., 2006. Towards multilocus sequence typing of the *Leishmania donovani* complex: resolving genotypes and haplotypes for five polymorphic metabolic enzymes (ASAT, GPL, NH1, NH2, PGD). *Int. J. Parasitol.* 36, 757–769.
- Mengesha, B., Abuhoj, M., 1978. Kala-azar among labour migrants in Metema-Humera region of Ethiopia. *Trop. Geogr. Med.* 30, 199–206.
- Meudt, H.M., Clarke, A.C., 2007. Almost forgotten or latest practice? AFLP applications, analyses and advances. *Trends Plant Sci.* 12, 106–117.
- Mishra, J., Madhubala, R., Singh, S., 2013. Visceral and post-kala-azar dermal leishmaniasis isolates show significant difference in their in vitro drug susceptibility pattern. *Parasitol. Res.* 112, 1001–1009.
- Mukhopadhyay, D., Dalton, J.E., Kaye, P.M., Chatterjee, M., 2014. Post kala-azar dermal leishmaniasis: an unresolved mystery. *Trends Parasitol.* 30, 65–74.
- Ochsenreither, S., Kuhls, K., Schaar, M., Presber, W., Schonian, G., 2006. Multilocus microsatellite typing as a new tool for discrimination of *Leishmania infantum* MON-1 strains. *J. Clin. Microbiol.* 44, 495–503.
- Odiwuor, S., Vuylsteke, M., De Doncker, S., Maes, I., Mbuchi, M., Dujardin, J.C., Van der Auwera, G., 2011. *Leishmania* AFLP: paving the way towards improved molecular assays and markers of diversity. *Infect. Genet. Evol.* 11, 960–967.
- Odiwuor, S., Veland, N., Maes, I., Arévalo, J., Dujardin, J.C., Van der Auwera, G., 2012. Evolution of the *Leishmania braziliensis* species complex from amplified fragment length polymorphisms, and clinical implications. *Infect. Genet. Evol.* 12, 1994–2002.
- Oryan, A., Shirian, S., Tabandeh, M.R., Hatam, G.R., Kalantari, M., Daneshbod, Y., 2013a. Molecular, cytological, and immunocytochemical study and kDNA sequencing of larval *Leishmania infantum* infection. *Parasitol. Res.* 112, 1799–1804.
- Oryan, A., Shirian, S., Tabandeh, M.R., Hatam, G.R., Randau, G., Daneshbod, Y., 2013b. Genetic diversity of *Leishmania major* strains isolated from different clinical forms of cutaneous leishmaniasis in southern Iran based on minicircle kDNA. *Infect. Genet. Evol.* 19, 226–231.
- Pralong, F., Portus, M., Risipal, P., Moreno, G., Bastien, P., Rioux, J.A., 1989. Ann. Parasitol. Hum. Comp. 64, 312–314 Simultaneous presence in dogs of 2 zymodemes of the *Leishmania infantum* complex.
- Pralong, F., Dereure, J., Bucheton, B., El-Safi, S., Dessein, A., Lanotte, G., Dedet, J.P.,

2001. Sudan: the possible original focus of visceral leishmaniasis. *Parasitology* 122, 599–605.
- Pratlong, F., Lami, P., Ravel, C., Balard, Y., Dereure, J., Serres, G., Baidouri, F.E., Dedet, J.P., 2013. Geographical distribution and epidemiological features of Old World *Leishmania infantum* and *Leishmania donovani* foci, based on the isoenzyme analysis of 2277 strains. *Parasitology* 140, 423–434.
- Pritchard, J.K., Stephens, M., Donnelly, P., 2000. Inference of population structure using multilocus genotype data. *Genetics* 155, 945–959.
- Restrepo, C.M., De La Guardia, C., Sousa, O.E., Calzada, J.E., Fernández, P.L., Lleonart, R., 2013. AFLP polymorphisms allow high resolution genetic analysis of American Tegumentary Leishmaniasis agents circulating in Panama and other members of the *Leishmania* genus. *PLoS One* 8, e73177.
- Ritmeijer, K., Veecken, H., Melaku, Y., Leal, G., Amsalu, R., Seaman, J., Davidson, R.N., 2001. Ethiopian visceral leishmaniasis: generic and proprietary sodium stibogluconate are equivalent; HIV co-infected patients have a poor outcome. *Trans. R. Soc. Trop. Med. Hyg.* 95, 668–672.
- Ritmeijer, K., Dejenie, A., Assefa, Y., Hundie, T.B., Mesure, J., Boots, G., den Boer, M., Davidson, R.N., 2006. A comparison of miltefosine and sodium stibogluconate for treatment of visceral leishmaniasis in an Ethiopian population with high prevalence of HIV infection. *Clin. Infect. Dis.* 43, 357–364.
- Rogers, W.O., Wirth, D.F., 1987. Kinetoplast DNA minicircles: regions of extensive sequence divergence. *Proc. Natl. Acad. Sci. U. S. A.* 84, 565–569.
- Rougeron, V., De Meeûs, T., Hide, M., Le Falher, G., Bucheton, B., Dereure, J., El-Safi, S.H., Dessein, A., Bañuls, A.L., 2011. Multifaceted population structure and reproductive strategy in *Leishmania donovani* complex in one Sudanese village. *PLoS Negl. Trop. Dis.* 5, e1448.
- Salotra, P., Duncan, R.C., Singh, R., Subba Raju, B.V., Sreenivas, G., Nakhasi, H.L., 2006. Upregulation of surface proteins in *Leishmania donovani* isolated from patients of post kala-azar dermal leishmaniasis. *Microbes Infect.* 8, 637–644.
- Scaglia, M., Malfitano, A., Douville, H., Sacchi, P., Gatti, S., Gradoni, L., Gramiccia, M., 1996. Dermodular and visceral leishmaniasis due to *Leishmania infantum* with a new isoenzyme pattern: report of a case involving a patient with AIDS. *Clin. Infect. Dis.* 22, 376–377.
- Schonian, G., Nasereddin, A., Dinse, N., Schweynoch, C., Schallig, H.D., Presber, W., Jaffe, C.L., 2003. PCR diagnosis and characterization of *Leishmania* in local and imported clinical samples. *Diagn. Microbiol. Infect. Dis.* 47, 349–358.
- Seaman, J., Mercer, A.J., Sondorp, H.E., Herwaldt, B.L., 1996. Epidemic visceral leishmaniasis in southern Sudan: treatment of severely debilitated patients under wartime conditions and with limited resources. *Ann. Intern. Med.* 124, 664–672.
- Simpson, L., Thiemann, O.H., Savill, N.J., Alfonso, J.D., Maslov, D.A., 2000. Evolution of RNA editing in trypanosome mitochondria. *Proc. Natl. Acad. Sci. U. S. A.* 97, 6986–6993.
- Simpson, L., Douglass, S.M., Lake, J.A., Pellegrini, M., Li, F., 2015. Comparison of the mitochondrial genomes and steady state transcriptomes of two strains of the trypanosomatid parasite, *Leishmania tarentolae*. *PLoS Negl. Trop. Dis.* 9, e0003841.
- Sreenivas, G., Raju, B.V., Singh, R., Selvapandiyar, A., Duncan, R., Sarkar, D., Nakhasi, H.L., Salotra, P., 2004. DNA polymorphism assay distinguishes isolates of *Leishmania donovani* that cause kala-azar from those that cause post-kala-azar dermal leishmaniasis in humans. *J. Clin. Microbiol.* 42, 1739–1741.
- Tamura, K., Nei, M., 1993. Estimation of the number of nucleotide substitutions in the control region of mitochondrial DNA in humans and chimpanzees. *Mol. Biol. Evol.* 10, 512–526.
- Zackay, A., Nasereddin, A., Takele, Y., Tadesse, D., Hailu, W., Hurissa, Z., Yifru, S., Weldegebreal, T., Diro, E., Kassahun, A., Hailu, A., Jaffe, C.L., 2013. Polymorphism in the HASPB repeat region of East African *Leishmania donovani* strains. *PLoS Negl. Trop. Dis.* 7, e2031.
- Zackay, A., Cotton, J.A., Sanders, M., Hailu, A., Nasereddin, A., Warburg, A., Jaffe, C.L., 2018. Genome wide comparison of Ethiopian *Leishmania donovani* strains reveals differences potentially related to parasite survival. *PLoS Genet.* 14, e1007133.
- Zemanová, E., Jirků, M., Mauricio, I.L., Horák, A., Miles, M.A., Lukes, J., 2007. The *Leishmania donovani* complex: genotypes of five metabolic enzymes (ICD, ME, MPI, G6PDH, and FH), new targets for multilocus sequence typing. *Int. J. Parasitol.* 37, 149–160.
- Zhang, H., Hare, M.P., 2012. Identifying and reducing AFLP genotyping error: an example of tradeoffs when comparing population structure in broadcast spawning versus brooding oysters. *Heredity (Edinb)* 108, 616–625.
- Zhang, W.W., Ramasamy, G., McCall, L.I., Haydock, A., Ranasinghe, S., Abeygunasekara, P., Sirimanna, G., Wickremasinghe, R., Myler, P., Matlashewski, G., 2014. Genetic analysis of *Leishmania donovani* tropism using a naturally attenuated cutaneous strain. *PLoS Pathog.* 10, e1004244.
- Zijlstra, E.E., 2014. PKDL and other dermal lesions in HIV co-infected patients with leishmaniasis: review of clinical presentation in relation to immune responses. *PLoS Negl. Trop. Dis.* 8, e3258.
- Zijlstra, E.E., 2016. The immunology of post-kala-azar dermal leishmaniasis (PKDL). *Parasit. Vectors* 9, 464.
- Zijlstra, E.E., El-Hassan, A.M., 2001. Leishmaniasis in Sudan. Post kala-azar dermal leishmaniasis. *Trans. R. Soc. Trop. Med. Hyg.* 95, S59–S76 Suppl 1.
- Zijlstra, E.E., Musa, A.M., Khalil, E.A., El-Hassan, I.M., El-Hassan, A.M., 2003. Post-kala-azar dermal leishmaniasis. *Lancet Infect. Dis.* 3, 87–98.