



**HAL**  
open science

## **New insights in molecular mechanisms involved in chronic kidney disease using high-resolution plasma proteome analysis**

Griet Glorieux, William Mullen, Flore Durantou, Szymon Filip, Nathalie Gayraud, Holger Husi, Eva Schepers, Nathalie Neiryneck, Joost Schanstra, Joachim Jankowski, et al.

### ► To cite this version:

Griet Glorieux, William Mullen, Flore Durantou, Szymon Filip, Nathalie Gayraud, et al.. New insights in molecular mechanisms involved in chronic kidney disease using high-resolution plasma proteome analysis. *Nephrology Dialysis Transplantation*, 2015, 30 (11), pp.1842 - 1852. 10.1093/ndt/gfv254 . hal-01907598

**HAL Id: hal-01907598**

**<https://hal.umontpellier.fr/hal-01907598v1>**

Submitted on 4 Dec 2024

**HAL** is a multi-disciplinary open access archive for the deposit and dissemination of scientific research documents, whether they are published or not. The documents may come from teaching and research institutions in France or abroad, or from public or private research centers.

L'archive ouverte pluridisciplinaire **HAL**, est destinée au dépôt et à la diffusion de documents scientifiques de niveau recherche, publiés ou non, émanant des établissements d'enseignement et de recherche français ou étrangers, des laboratoires publics ou privés.



Glorieux, G. et al. (2015) New insights in molecular mechanisms involved in chronic kidney disease using high-resolution plasma proteome analysis. *Nephrology Dialysis Transplantation*, 30(11), pp. 1842-1852.

There may be differences between this version and the published version. You are advised to consult the publisher's version if you wish to cite from it.

<http://eprints.gla.ac.uk/128438/>

Deposited on: 16 November 2016

Enlighten – Research publications by members of the University of Glasgow  
<http://eprints.gla.ac.uk>

# New insights in molecular mechanisms involved in chronic kidney disease using high-resolution plasma proteome analysis.

*Griet Glorieux<sup>1</sup>, William Mullen<sup>2</sup>, Flore Durantou<sup>3</sup>, Szymon Filip<sup>4,5</sup>, Nathalie Gayraud<sup>3</sup>, Holger Husi<sup>2</sup>, Eva Schepers<sup>1</sup>, Nathalie Neiryck<sup>1</sup>, Joost P. Schanstra<sup>6, 7</sup>, Joachim Jankowski<sup>8</sup>, Harald Mischak<sup>2,9</sup>, Àngel Argilés<sup>3</sup>, Raymond Vanholder<sup>1</sup>, Antonia Vlahou<sup>4</sup>, Julie Klein<sup>6, 7\*</sup>.*

<sup>1</sup>Nephrology Section, Ghent University Hospital, Gent, Belgium

<sup>2</sup>BHF Glasgow Cardiovascular Research Centre, University of Glasgow, United Kingdom

<sup>3</sup>RD Néphrologie, Montpellier, France

<sup>4</sup>Biomedical Research Foundation, Academy of Athens, Greece

<sup>5</sup>Charité - Universitätsmedizin Berlin, Germany

<sup>6</sup>Institut National de la Santé et de la Recherche Médicale (INSERM), U1048, Institute of Cardiovascular and Metabolic Disease, Toulouse, France

<sup>7</sup>Université Toulouse III Paul-Sabatier, Toulouse, France

<sup>8</sup>University Hospital RWTH, Institute for Molecular Cardiovascular Research, Aachen, Germany

<sup>9</sup>Mosaiques Diagnostics, Hannover, Germany

## **Corresponding Author**

\* Julie Klein

Inserm U1048/I2MC

Equipe 12 : Fibrose rénale, mécanismes et détection

1 avenue Jean Poulhès  
BP 84225  
31432 Toulouse Cedex 4  
00 33 5 31 22 40 70  
[julie.klein64@gmail.com](mailto:julie.klein64@gmail.com)

## **Abstract**

**Background:** The reduced glomerular filtration rate in the advanced stages of chronic kidney disease (CKD) leads to plasma accumulation of uremic retention solutes including proteins. It has been hypothesized that these changes may, at least in part, be responsible for CKD-associated morbidity and mortality. However, most studies focused on the role of individual proteins while a holistic, large-scale, integrative approach may generate significant additional insight.

**Methods:** In a discovery study, we analysed the plasma proteomes of patients with stage 2-3 CKD (n=14) and stage 5 CKD with hemodialysis (HD)(n=15), using high-resolution LC-MS/MS analysis. Selected results were validated in cohort of 40 patients with different CKD stages with or without HD, using ELISA.

**Results:** Of a total of 2054 detected proteins, 127 displayed lower, while 206 displayed higher abundance in plasma of patients on HD. Molecular pathway analysis confirmed modification of known processes involved in CKD complications including decreased hemostasis and increased inflammation, complement activation and vascular damage. In addition, we identified the plasma increase during CKD progression of lysozyme C and leucine-rich alpha-2 glycoprotein, two proteins related to vascular damage and heart failure not yet found to be associated to CKD. Interestingly high level of leucine-rich alpha-2 glycoprotein was associated with higher mortality in stage 5 CKD patients on HD.

**Conclusions:** This study provides for the first time comprehensive assessment of CKD plasma proteome, contributes to new knowledge and potential markers in the field of late stage CKD and will serve as a basis for future studies investigating the relevance of these molecules in CKD-associated morbidity and mortality.

**Keywords:** Chronic kidney disease, hemodialysis, uremic solutes, proteomics, mechanisms, biomarkers.

**Short summary:** Plasma proteome analysis identified >300 proteins with modified abundance in patients on hemodialysis. Systems biology analysis and validation of key-proteins with ELISA suggested the association of these proteins to processes involved in the morbidity and mortality encountered in late stage CKD and identified potential new targets.

## Introduction

Chronic kidney disease (CKD) is characterized by progressive loss of renal function, with the final stage being end-stage renal disease (ESRD)<sup>1</sup>. At this stage, patients require permanent renal replacement therapy, *i.e.* hemodialysis (HD)/peritoneal dialysis (PD) or transplantation<sup>1</sup>. As kidney function declines, there is a progressive increase in both mortality and co-morbidities, such as cardiovascular complications<sup>2-6</sup>.

The molecular mechanisms involved in CKD and ESRD complications are complex and comprise coagulation abnormalities, endothelial dysfunction, vascular calcification due to impaired calcium and phosphate metabolism, increased oxidative and metabolic stress and inflammation<sup>7-10</sup>. The reduced glomerular filtration rate (GFR) in the advanced stages of CKD affects blood clearance and leads to subsequent accumulation of organic products (uremic retention solutes) and drugs that are normally metabolized or excreted by the kidney. Such uremic retention solutes include proteins, and may induce toxic effects<sup>11, 12</sup>. Significant changes in the blood protein composition have been reported in the past<sup>13-17</sup>, and it has been hypothesized that these changes in plasma proteins may, at least in part, be responsible for CKD-associated morbidity and mortality<sup>13, 14, 18</sup>. However these different studies mostly focused on the role of individual proteins and this promising yet disparate molecular evidence indicates a clear need for a holistic, large-scale approach. Plasma proteomics (*i.e.* analysis of the total plasma protein content) could be of particular interest to provide an integrated view and better understanding of CKD-associated complications. The recent advancement in proteomics technologies and software solutions have enabled assessing highly complex samples with high validity<sup>19, 20</sup>, indicating that high-resolution plasma proteome analysis should inform about CKD-associated molecular changes.

The rationale of the present study was to apply untargeted high-resolution plasma proteome analysis to investigate molecular changes associated with CKD. Our aim was to identify proteins with altered plasma levels and estimate the functional consequences of such changes.

## **Material and Methods**

### ***Patients***

The discovery cohort consisted of 29 patients with CKD. Fourteen CKD patients not treated with HD were recruited from the Department of Nephrology, Transplantation and Dialysis of the University Hospital of Montpellier and the Public Hospital of Sète. Fifteen patients on maintenance HD were recruited from the Néphrologie Dialyse Saint Guilhem Dialysis Unit in Sète. Recruitment was performed between February and June of 2008. The study was approved by the Comité de Protection des Personnes of Montpellier and declared to the French Ministry (reference number DC-2008–417).

The validation cohort consisted out of 32 CKD patients and 8 healthy controls selected from the sample collection of the Nephrology Department of the Ghent University Hospital, Belgium. Subjects were sampled under fasting conditions between January 2011 and July 2012. The study was approved by the local ethical committee (Belgian registration number B67020107926). The study was in accordance with the principles of the Declaration of Helsinki. Written informed consent was obtained from all participants before sampling.

Patients on hemodialysis underwent either hemodialysis or online-hemodiafiltration 3 times 4 hours a week. The quality of the dialysis fluid met the ultrapure standards (bacteria <0.1 CFU/ml, endotoxin <0.03 EU/ml) as checked on a regular basis. Plasma samples were collected



prior to dialysis, before anticoagulant administration. One patient on home hemodialysis was sampled when consulting the out-patient clinic.

K-EDTA-plasma samples were processed immediately after collection and stored at  $-80^{\circ}\text{C}$ . Urine protein, C-reactive protein and creatinine concentrations were determined by routine techniques by the hospital laboratory. eGFR was calculated based on serum creatinine using the CKD-EPI creatinine equation. Proteinuria was determined using urine dipstick or with  $>0.25\text{g}$  protein/g creatinine.

### ***Sample preparation for proteomic analysis***

Ten  $\mu\text{L}$  of thawed plasma sample was diluted with 90  $\mu\text{L}$  0.1% sodium dodecyl sulfate, 20mM dithiothreitol, and 0.1 M TrisHCl (pH=7.6). The sample was sonicated at room temperature for 30 minutes, followed by denaturation at  $95^{\circ}\text{C}$  for 3 min. Samples were subsequently incubated with 50 mM Iodoacetamide at room temperature for 30 min in the dark followed by the addition of ammonium bicarbonate buffer solution (300  $\mu\text{L}$ , 50mM), applied to NAP-5 column, and eluted with 1 mL of 50mM ammonium bicarbonate buffer solution.

Twenty  $\mu\text{g}$  of lyophilized trypsin was added to 50  $\mu\text{L}$  of activation buffer solution, and 2  $\mu\text{L}$  of this solution was added to the eluted sample. Trypsin digestion was carried out overnight at a temperature of  $37^{\circ}\text{C}$ . Samples were then lyophilized, stored at  $4^{\circ}\text{C}$  and resuspended in 100  $\mu\text{L}$  HPLC-grade  $\text{H}_2\text{O}$  shortly before mass spectrometry analysis.

### ***Proteome analysis***

The plasma extracts (5 µl) were analysed by nanoflow LC-MS/MS using a Orbitrap velos FTMS as per<sup>19</sup>. The gradient was run from at 1% B for 5 mins rising to 25% B after 360 mins then on to 65% B after 480 mins.

### ***Proteomics data processing***

Peptide analysis was performed using SEQUEST against the Human Uniprot Database as per<sup>19</sup>.

The relative quantitative analysis was performed based on the peptide area values. Before analysis, ppm-normalization of peptide areas was conducted.

$$\text{Normalized mass-peak area} = \text{Peptide mass-peak area} / \text{Total sample mass-peak area} \times 10^6$$

Protein abundance was calculated as the sum of all normalized peptide areas for the given protein. Proteins covered by at least two valid peptides were considered valid. Mean protein abundance in the CKD2-3 group was compared to the mean protein abundance in the ESRD/HD group. Protein entries were mapped to the SwissProt database using either the mapping service provided by UniProt or via Blast searching ([web.expasy.org/blast/](http://web.expasy.org/blast/)) and merged according to the SwissProt names.

### ***ELISA***

Lysozyme C (Abcam (ab108880)), Complement factor D (R&D Systems (DFD00)), Leucine-rich alpha-2-glycoprotein (Cusabio (CSB-E12962h)) and histidine-rich glycoprotein (Cusabio (CSB-E13159h)) were quantified by ELISA according to manufacturer's guidelines. Samples were analysed using the EL808 Ultra Microplate Reader from Bio-Tek Instruments (Winooski, VT) using KC4V3.0 Analysis Software.

### ***Functional analysis***

Functional analysis was performed with Ingenuity Pathway Analysis (Qiagen) and Cytoscape (version 3.0.2; ClueGO plugin version 2.0.6) software. Individual analyses were performed by comparison of up-regulated versus down-regulated proteins, thereby eliminating common terminology-clusters associated with both conditions, using the GO-class of biological functions.

### ***Statistical analysis***

Statistical analysis was performed using Graph Pad Prism 5.0 software. F-test was performed to test for data distribution. When data were normally distributed, parametric t-test was performed; otherwise, the statistical analysis was performed using Mann-Whitney test or Wilcoxon signed rank test. Multiple hypotheses testing correction was performed using Benjamini-Hochberg test for false discovery rate. Comparison of survival curves was performed using Log-rank (Mantel-Cox) test.

## **Results**

### ***Plasma proteome analysis***

We studied the plasma proteome of 14 patients with moderate CKD (stage 2 and 3, CKD2-3 group) and 15 patients on hemodialysis for at least one year (CKD5/HD group) (Table 1). A schematic of the design is given in Figure 1. LC-MS/MS analysis enabled identification of 9017 peptides (Supplementary Table 1), representing a total of 2054 unique proteins quantified using a label-free approach (Supplementary Table 2). To assess the validity of the quantification strategy, the reported concentration of 20 high abundant plasma proteins<sup>21-23</sup> (Supplementary Table 3) was compared to their respective relative abundance in the LC-MS/MS experiment

(normalized-ppm mass-peak area, arbitrary units). As evident from Figure 2A significant correlation between existing data and LC-MS/MS quantification was observed (CKD2-3 Spearman  $r = 0.8480$ ,  $p < 0.0001$ , CKD5/HD Spearman  $r = 0.7889$ ,  $p < 0.0001$ ). A further validation of the plasma proteome-based approach was obtained by measuring C-reactive protein (CRP). We observed significant correlation between quantitative measurement of CRP obtained by routine laboratory testing (Table 1) and semi-quantitative LC-MS/MS abundance in the discovery cohort (Figure 2B), confirming the validity of the approach.

### ***Plasma proteome changes in CKD5/HD versus CKD2-3 patients***

When comparing the 15 datasets from patients on HD with the 14 from patients at early stage CKD, we identified 333 proteins as significantly different between the two groups, 127 with lower and 206 with higher abundance in CKD5/HD compared to CKD2-3 (Supplementary Table 2). Upon correction for multiple testing, 39 of the 333 remained significant (Table 2). To exclude bias introduced by age or gender, we also investigated an age- and sex-matched subcohort of 7 CKD2-3 patients and 7 CKD5/HD patients (Table 1). Although this subcohort comparison is of lower statistical power, the initial results could be generally confirmed (Table 2).

Using LC-MS/MS, we confirmed increased abundance of 7 of 39 well-characterized uremic toxins<sup>11, 12</sup> including beta-2-microglobulin and prostaglandin-H2 D-isomerase, while two of them were detected but showed unmodified abundance (i.e. immunoglobulins kappa and lambda) (Supplementary Table 4).

### ***Pathway analysis***

Functional analysis of the 333 modified plasma proteins was performed using Gene Ontology (GO) and Ingenuity Pathway Analysis (IPA) software. The pathways with the highest modification scores included acute phase response signaling and complement and coagulation systems (Figure 3-4, Supplementary Table 5). Other pathways included platelet degranulation, calcium ion-dependent exocytosis, response to selenium ion, liver X receptor (LXR)/retinoid R receptor (RXR) activation, atherosclerosis signaling and production of nitric oxide (NO) and reactive oxygen species (ROS) (Supplementary Table 5).

Of the 33 proteins associated with the complement system, 24 were detected in the plasma using LC-MS/MS. Among those 5 were significantly increased in abundance in the plasma of patients at CKD5/HD compared to CKD2-3 (Figure 3A), suggesting activation of the complement system in advanced CKD. On the other hand, 23 out of 35 proteins associated with the coagulation system were detected in the plasma using LC-MS/MS (not shown), and levels of 5 were significantly modified, 3 with lower, and 2 with higher abundance in CKD5/HD compared to CKD2-3 (Figure 3B). From a total of 169 proteins associated with acute phase response signaling in Ingenuity database, 62 were detected in plasma and 17 were significantly modified in CKD5/HD patients (Figure 4). Most of these changes were in accordance with the activation of the pathway (Figure 4): 9 proteins known to be increased in the plasma during the acute phase response were found to be more abundant, and 4 known to be decreased were found to be less abundant in CKD5/HD compared to CKD2-3 (Figure 4). In particular, CRP levels determined by LC-MS/MS or routine analysis showed similar increase in the plasma of CKD5/HD patients compared to CKD2-3 (Figure 4, Bold and Table 1), confirming activation of the acute phase response in CKD. Of note, the same analysis was performed after exclusion of 6 patients of the CKD5/HD group with highest CRP values and this lead to same results.

### ***Validation of newly identified plasma proteins using ELISA***

We next aimed to validate key novel proteins in an independent cohort of healthy controls and patients with stage 3b (CKD3b), stage 4 (CKD4), and stage 5 CKD not on HD (CKD5 no HD) and on HD (CKD5/HD)(n=8/group), all matched for age and gender (Table 1) using ELISA. We confirmed that the abundance of complement factor D, lysozyme C and leucine-rich alpha-2 glycoprotein were significantly increased in plasma of CKD5 patients compared to controls. We further showed that their abundance progressively increased during CKD progression (Figure 5A-5C). We also demonstrated that protein levels were increased in the CKD5/HD group compared to CKD5 not on dialysis (Figure 5E-5G). We could not validate LC-MS/MS change for histidine-rich glycoprotein (Figure 5D and 5H). We further correlated plasma concentrations of the proteins with the eGFR of the patients. Complement factor D ( $r=-0.9084$ ,  $p<0.0001$ ), lysozyme C ( $r=-0.7115$ ,  $p<0.0001$ ) and leucine-rich alpha-2 glycoprotein ( $r=-0.8236$ ,  $p<0.0001$ ) were inversely correlated with eGFR while histidine-rich glycoprotein showed no significant correlation ( $r=-0.0046$ , n.s.)(Supplementary Figure).

### ***Association of complement factor D, lysozyme C, leucine-rich alpha-2 glycoprotein and histidine-rich glycoprotein to mortality in CKD5/HD patients***

We next assessed the association of complement factor D, lysozyme C, leucine-rich alpha-2 glycoprotein and histidine-rich glycoprotein to the occurrence of all-cause mortality in CKD patients after a follow-up period of  $3.14\pm 0.14$  years post sampling (Figure 6). In the discovery cohort, no mortality was observed in the CKD2-3 patient group. From the 15 patients

of the CKD5/HD group, two patients were excluded as one was transplanted and one was lost for follow-up. Among the 13 remaining patients, 10 died and 3 were still alive at the last follow-up. We determined the median LC-MS/MS abundance as the threshold for the four proteins. We observed that high abundance of leucine-rich alpha-2 glycoprotein was significantly associated with higher mortality in patients with CKD5 on hemodialysis compared to patients with low leucine-rich alpha-2 glycoprotein abundance (Figure 6C). Level of leucine-rich alpha-2 glycoprotein was neither affected by age ( $73.86 \pm 4.37$  and  $71.33 \pm 6.15$  years old in low versus high,  $p > 0.05$ ) nor time on dialysis ( $2 \pm 1.26$  and  $2 \pm 1.15$  years in low versus high,  $p > 0.05$ ).

## ***Discussion***

The aim of the present study was to assess global plasma protein changes in late stage CKD patients and identify those proteins associated to CKD progression. The knowledge provided by this global approach is likely to help in progressing in our understanding of the pathophysiology of the different aspects of CKD and in recognizing those of prognosis value. To this aim, we compared the plasma proteome changes in patients with moderate CKD (stage 2 and 3) to patients with advanced CKD undergoing HD using LC-MS/MS (Figure 1).

Uremic toxins are solutes normally excreted by the kidneys, which accumulate and negatively impact biologic functions when renal function declines. Reviews from the European Uremic Toxin Work Group listed and classified 39 uremic retention proteins and their normal and uremic concentrations, as measured with antibody-based techniques, such as ELISA or radioimmunoassay<sup>11, 12</sup>. In our study, we confirmed the accumulation of seven of these well-known uremic solutes (*e.g.* beta-2-microglobulina and prostaglandin-H2 D-isomerase) out of the 333 proteins that were significantly different between the two groups. The technology did not

allow the detection of the other uremic toxins most likely due to their very low molecular weight (e.g. proenkephalin-A) and/or their very low abundance (e.g. fibroblast growth factor 23) and the masking effect of highly abundant plasma proteins such as albumin (Supplementary Table 4).

To verify our findings, we focused on new candidates generally not described in the context of CKD (lysozyme C, leucine-rich alpha-2-glycoprotein and histidine-rich glycoprotein). Using ELISA, we observed in an independent validation cohort that lysozyme C and leucine-rich alpha-2-glycoprotein abundance was increased in CKD patients compared to healthy controls, and were further increased during HD (Figure 5). Conversely, although histidine-rich glycoprotein level was clearly significantly decreased in ESRD as measured using LC-MS/MS, we were not able to confirm this difference using ELISA. Such technical discrepancy between MS-based and antibody-based approaches such as western blot or ELISA is not uncommon and has been observed in other proteome studies<sup>24-26</sup>, making the validation process, yet necessary, sometimes difficult.

Circulating lysozyme C, a protein released from leukocytes and macrophages and primarily known for its bacteriolytic function, binds to the endocardial endothelium and within the vascular smooth muscle layer of arteries, leading to the generation of hydrogen peroxide and nitric oxide and ultimately causing persistent systemic vasodilatation and myocardial depression<sup>27, 28</sup>. Leucine-rich alpha-2-glycoprotein is a secreted glycoprotein of not too well known function and has been linked to different type of cancer, appendicitis and ulcerative colitis<sup>29-34</sup>. It also promotes aberrant angiogenesis<sup>35</sup> which is a key feature of a number of diseases including age-related macular degeneration, diabetic retinopathy, cancer, atherosclerosis and plaque rupture<sup>36</sup>. Moreover, leucine rich alpha-2 glycoprotein was previously shown to be excreted in the urine of patients with IgA nephropathy and CKD<sup>37, 38</sup>. Plasma accumulation of the proteins



was significantly correlated with renal function decline (Supplementary Figure), showing that the increased plasma levels of the molecules reflect at least in part alteration of glomerular filtration. Although we do not know whether this accumulation can be responsible for the development of complications in patients with advanced CKD, it is interesting to note that increased plasma level of lysozyme C was significantly associated with atheromatous disease and could predict the severity of coronary artery disease<sup>39</sup>, while increased serum leucine-rich alpha-2-glycoprotein has been found to be a biomarker of heart failure<sup>29</sup>.

The functional relevance of the 333 proteins identified with our proteomic approach and their putative prognostic value, are to be further explored. As a first attempt to gain insight we assessed the cellular activities to which these proteins are related with and observed that many of them participate in acute phase response and complement and coagulation system activation (Figure 3-4, Supplementary Table 5). Activated systemic inflammatory state is a very well-known epiphenomenon of advanced CKD and dialysis<sup>40, 41</sup>. The levels of CRP and other acute-phase reactants proteins such as alpha-1-antichymotrypsin (Serpina3) and alpha-1-acid glycoprotein (Orm1) were increased in our patients with ESRD and HD confirming acute inflammatory response in uremic conditions (Figure 4 and Supplementary Table 5). Moreover, patients with advanced CKD displayed elevated levels of different members of the complement cascade, such as complement components C1r, C1s, C4, C9 and complement factor D. We confirmed in the validation cohort that complement factor D abundance was increased in CKD patients compared to healthy controls, and was further increased in patients undergoing chronic HD (Figure 5). Complement factor D is a serine protease catabolized by the kidney, resulting in increased circulating complement factor D concentrations in patients with chronic renal failure and on long-term dialysis<sup>42</sup>. The question remains whether plasma accumulation of complement

factor D is only the reflection of an alteration of kidney filtration or is an actor involved in the increased risk of CKD associated complications. Although data are scarce, it has been suggested that complement factor D might be involved in the development of vascular smooth muscle cells abnormalities and arterial cartilaginous lesions in a mouse model of vascular calcifications<sup>43, 44</sup>. In light of our results, further studies should be performed in order to better understand the origin and the role complement factor D and complement system in patients with CKD and HD and its link to vascular disease.

In addition to these inflammatory risk factors, changes in the expression of coagulation factors F5, F10 and F12, as well as in plasma kallikrein (Klkb1), proteins related to blood coagulation and platelet activation (Figure 3B and Supplementary Table 5) were observed. Changes in hemostasis are well described in CKD<sup>41</sup> due to uremic toxins, interaction with dialyzer membranes and the repeated use of anticoagulants all together contributing to the risk of cardiovascular and thrombotic complications in patients undergoing HD<sup>41</sup>. In 1996, Tan et al analyzed the plasma activity of different coagulation factors in patients with IgA nephropathy and found that IgA patients had significantly lower plasma activity of F12 and Klkb1 compared to healthy controls, which was consistent with our observations<sup>45</sup>. More recently, the plasma activity of F5 was found significantly higher in diabetic patients with renal disease compared with diabetic patients without renal disease<sup>46</sup>, a finding in accordance with the observed increased level of F5 in the plasma of CKD patients. However, in this study, plasma activity of F10 tended to decrease as observed in our study but this not reached significant level<sup>46</sup>.

One of the main limitations of this study is that observed molecular changes have not been related to clinical endpoints such as infections, hemorrhages, atherosclerosis or cardiovascular events except for leucine-rich alpha-2 glycoprotein for which we observed that

high plasma levels are significantly associated with higher mortality in patients with CKD5 on hemodialysis compared to patients with low leucine-rich alpha-2 glycoprotein abundance (Figure 6C). Indeed, this study was designed as a discovery study to first identify new candidate proteins among a broad array of hundreds of potential candidates with significant plasma changes, which may in subsequent studies enable better understanding of HD-associated complications.

In conclusion, in this study we have generated for the first time a comprehensive assessment of the plasma proteome of ESRD patients in comparison to early stage CKD, in a cohort of significant size that enabled identification of a large array of proteins altered in ESRD, using high-resolution LC-MS/MS analysis. This study serves as a basis for future studies investigating the relevance of the observed changes, but also as a well-defined comparator for similar studies in the future. In addition, the data may serve for further biomarker identification and systems biology-based assessment of the molecular mechanisms involved CKD-associated morbidity and mortality.

## **Acknowledgments**

This study was funded in part by “Clinical and system –omics for the identification of the Molecular Determinants of established Chronic Kidney Disease” (iMODE-CKD, PEOPLE-ITN-GA-2013-608332), “Systems Biology to Identify Molecular Targets for Vascular Disease Treatment” (SysVasc, HEALTH-2013 603288), Urosystemics (Urosystemics ETB-2006-016) and “Systems biology towards novel chronic kidney disease diagnosis and treatment” (SysKID HEALTH-F2-2009-241544). G.G., J.J., J.P.S., A.A, H.M. and R.V. are members of the

European Uraemic Toxin Working Group of the European Society of Artificial Organs (ESAO) endorsed by the European Renal Association—European Dialysis Transplantation Association.

### **Conflict of interest**

None. The results presented in this paper have not been published previously in whole or part, except in abstract format.

### **References**

1. K/DOQI clinical practice guidelines for chronic kidney disease: evaluation, classification, and stratification. *Am J Kidney Dis* 2002; **39**: S1-266.
2. Coresh J, Selvin E, Stevens LA, *et al.* Prevalence of chronic kidney disease in the United States. *Jama* 2007; **298**: 2038-2047.
3. Dalrymple LS, Katz R, Kestenbaum B, *et al.* Chronic kidney disease and the risk of end-stage renal disease versus death. *J Gen Intern Med* 2011; **26**: 379-385.
4. Moody WE, Edwards NC, Chue CD, *et al.* Arterial disease in chronic kidney disease. *Heart* 2013; **99**: 365-372.
5. Matsushita K, van der Velde M, Astor BC, *et al.* Association of estimated glomerular filtration rate and albuminuria with all-cause and cardiovascular mortality in general population cohorts: a collaborative meta-analysis. *Lancet* 2010; **375**: 2073-2081.
6. Vanholder R, Massy Z, Argiles A, *et al.* Chronic kidney disease as cause of cardiovascular morbidity and mortality. *Nephrol Dial Transplant* 2005; **20**: 1048-1056.
7. Bansal S, Siddarth M, Chawla D, *et al.* Advanced glycation end products enhance reactive oxygen and nitrogen species generation in neutrophils in vitro. *Mol Cell Biochem* 2012; **361**: 289-296.
8. Basta G, Schmidt AM, De Caterina R. Advanced glycation end products and vascular inflammation: implications for accelerated atherosclerosis in diabetes. *Cardiovasc Res* 2004; **63**: 582-592.

9. Nguyen-Khoa T, Massy ZA, De Bandt JP, *et al.* Oxidative stress and haemodialysis: role of inflammation and duration of dialysis treatment. *Nephrol Dial Transplant* 2001; **16**: 335-340.
10. Afsar B, Turkmen K, Covic A, *et al.* An Update on Coronary Artery Disease and Chronic Kidney Disease. *Int J Nephrol* 2014; **2014**: 767424.
11. Duranton F, Cohen G, De Smet R, *et al.* Normal and pathologic concentrations of uremic toxins. *J Am Soc Nephrol* 2012; **23**: 1258-1270.
12. Vanholder R, De Smet R, Glorieux G, *et al.* Review on uremic toxins: classification, concentration, and interindividual variability. *Kidney Int* 2003; **63**: 1934-1943.
13. Liabeuf S, Lenglet A, Desjardins L, *et al.* Plasma beta-2 microglobulin is associated with cardiovascular disease in uremic patients. *Kidney Int* 2012; **82**: 1297-1303.
14. Lin Z, Zhou Z, Liu Y, *et al.* Circulating FGF21 levels are progressively increased from the early to end stages of chronic kidney diseases and are associated with renal function in Chinese. *PLoS One* 2011; **6**: e18398.
15. Malickova K, Brodska H, Lachmanova J, *et al.* Plasma calprotectin in chronically dialyzed end-stage renal disease patients. *Inflamm Res* 2010; **59**: 299-305.
16. Sabbiseti VS, Waikar SS, Antoine DJ, *et al.* Blood Kidney Injury Molecule-1 Is a Biomarker of Acute and Chronic Kidney Injury and Predicts Progression to ESRD in Type I Diabetes. *J Am Soc Nephrol* 2014.
17. Celap I, Simundic AM, Nikolac N, *et al.* Visfatin is not associated with inflammatory markers in patients on hemodialysis. *Clin Lab* 2013; **59**: 1253-1259.
18. Yilmaz MI, Siritopol D, Saglam M, *et al.* Plasma endocan levels associate with inflammation, vascular abnormalities, cardiovascular events, and survival in chronic kidney disease. *Kidney Int* 2014.
19. Husi H, Sanchez-Nino MD, Delles C, *et al.* A combinatorial approach of Proteomics and Systems Biology in unravelling the mechanisms of acute kidney injury (AKI): involvement of NMDA receptor GRIN1 in murine AKI. *BMC Syst Biol* 2013; **7**: 110.

20. Husi H, Van Agtmael T, Mullen W, *et al.* Proteome-based systems biology analysis of the diabetic mouse aorta reveals major changes in fatty acid biosynthesis as potential hallmark in diabetes mellitus-associated vascular disease. *Circ Cardiovasc Genet* 2014; **7**: 161-170.
21. Haab BB, Geierstanger BH, Michailidis G, *et al.* Immunoassay and antibody microarray analysis of the HUPO Plasma Proteome Project reference specimens: systematic variation between sample types and calibration of mass spectrometry data. *Proteomics* 2005; **5**: 3278-3291.
22. Hortin GL, Sviridov D, Anderson NL. High-abundance polypeptides of the human plasma proteome comprising the top 4 logs of polypeptide abundance. *Clin Chem* 2008; **54**: 1608-1616.
23. Polanski M, Anderson NL. A list of candidate cancer biomarkers for targeted proteomics. *Biomark Insights* 2007; **1**: 1-48.
24. Andersen RF, Palmfeldt J, Jespersen B, *et al.* Plasma and urine proteomic profiles in childhood idiopathic nephrotic syndrome. *Proteomics Clin Appl* 2012; **6**: 382-393.
25. Majek P, Riedelova-Reicheltova Z, Suttnar J, *et al.* Proteome changes in the plasma of myelodysplastic syndrome patients with refractory anemia with excess blasts subtype 2. *Dis Markers* 2014; **2014**: 178709.
26. Xu DD, Deng DF, Li X, *et al.* Discovery and identification of serum potential biomarkers for pulmonary tuberculosis using iTRAQ-coupled two-dimensional LC-MS/MS. *Proteomics* 2014; **14**: 322-331.
27. Gotes J, Kasian K, Jacobs H, *et al.* Lysozyme, a mediator of sepsis that deposits in the systemic vasculature and kidney as a possible mechanism of acute organ dysfunction. *Shock* 2014; **41**: 256-265.
28. Mink SN, Kasian K, Santos Martinez LE, *et al.* Lysozyme, a mediator of sepsis that produces vasodilation by hydrogen peroxide signaling in an arterial preparation. *Am J Physiol Heart Circ Physiol* 2008; **294**: H1724-1735.
29. Watson CJ, Ledwidge MT, Phelan D, *et al.* Proteomic analysis of coronary sinus serum reveals leucine-rich alpha2-glycoprotein as a novel biomarker of ventricular dysfunction and heart failure. *Circ Heart Fail* 2011; **4**: 188-197.

30. Linden M, Lind SB, Mayrhofer C, *et al.* Proteomic analysis of urinary biomarker candidates for nonmuscle invasive bladder cancer. *Proteomics* 2012; **12**: 135-144.
31. Wen SY, Zhang LN, Yang XM, *et al.* LRG1 is an independent prognostic factor for endometrial carcinoma. *Tumour Biol* 2014.
32. He X, Wang Y, Zhang W, *et al.* Screening differential expression of serum proteins in AFP-negative HBV-related hepatocellular carcinoma using iTRAQ -MALDI-MS/MS. *Neoplasma* 2014; **61**: 17-26.
33. Kentsis A, Ahmed S, Kurek K, *et al.* Detection and diagnostic value of urine leucine-rich alpha-2-glycoprotein in children with suspected acute appendicitis. *Ann Emerg Med* 2012; **60**: 78-83 e71.
34. Serada S, Fujimoto M, Terabe F, *et al.* Serum leucine-rich alpha-2 glycoprotein is a disease activity biomarker in ulcerative colitis. *Inflamm Bowel Dis* 2012; **18**: 2169-2179.
35. Wang X, Abraham S, McKenzie JA, *et al.* LRG1 promotes angiogenesis by modulating endothelial TGF-beta signalling. *Nature* 2013; **499**: 306-311.
36. Michel JB, Martin-Ventura JL, Nicoletti A, *et al.* Pathology of human plaque vulnerability: Mechanisms and consequences of intraplaque haemorrhages. *Atherosclerosis* 2014; **234**: 311-319.
37. Kalantari S, Rutishauser D, Samavat S, *et al.* Urinary prognostic biomarkers and classification of IgA nephropathy by high resolution mass spectrometry coupled with liquid chromatography. *PLoS One* 2013; **8**: e80830.
38. Vivekanandan-Giri A, Slocum JL, Buller CL, *et al.* Urine glycoprotein profile reveals novel markers for chronic kidney disease. *Int J Proteomics* 2011; **2011**: 214715.
39. Abdul-Salam VB, Ramrakha P, Krishnan U, *et al.* Identification and assessment of plasma lysozyme as a putative biomarker of atherosclerosis. *Arterioscler Thromb Vasc Biol* 2010; **30**: 1027-1033.
40. Romao JE, Jr., Haiashi AR, Elias RM, *et al.* Positive acute-phase inflammatory markers in different stages of chronic kidney disease. *Am J Nephrol* 2006; **26**: 59-66.

41. Schoorl M, Grooteman MP, Bartels PC, *et al.* Aspects of platelet disturbances in haemodialysis patients. *Clin Kidney J* 2013; **6**: 266-271.
42. Volanakis JE, Barnum SR, Giddens M, *et al.* Renal filtration and catabolism of complement protein D. *N Engl J Med* 1985; **312**: 395-399.
43. Beazley KE, Reckard S, Nurminsky D, *et al.* Two sides of MGP null arterial disease: chondrogenic lesions dependent on transglutaminase 2 and elastin fragmentation associated with induction of adipsin. *J Biol Chem* 2013; **288**: 31400-31408.
44. Zhu L, Wigle D, Hinek A, *et al.* The endogenous vascular elastase that governs development and progression of monocrotaline-induced pulmonary hypertension in rats is a novel enzyme related to the serine proteinase adipsin. *J Clin Invest* 1994; **94**: 1163-1171.
45. Tan CC, Lee GS, Lee EJ, *et al.* Plasma activity of contact coagulation factors in patients with IgA nephritis. *Ann Acad Med Singapore* 1996; **25**: 218-221.
46. Erem C, Hacıhasanoglu A, Celik S, *et al.* Coagulation and fibrinolysis parameters in type 2 diabetic patients with and without diabetic vascular complications. *Med Princ Pract* 2005; **14**: 22-30.



**Table 1. Patient selection.** The table summarizes the demographic and clinical data of the patients included in the study. n.d.: not detected. [n.s.: not significant.](#) [n.a.: not available.](#)

	Discovery cohort (complete)			Discovery sub cohort (matched)			Validation cohort						
	CKD2-3	CKD5/HD	pValue	CKD2-3	CKD5/HD	pValue	Controls	CKD3b	CKD4	CKD5 HD	no	CKD5/HD	pValue
N	14	15		7	7		8	8	8	8	8		
Male/Female	6/8	12/3	0.039	3/4	4/3	n.s.	4/4	4/4	4/4	4/4	4/4	4/4	n.s.
eGFR (mL/min/1.73m <sup>2</sup> )	63.78 ±14.42	9.13 ± 3.20	<0.0001	61.30 ±12.39	<10	0.0006	-	37.05 ±4.00	21.81 ±5.46	12.17 ±2.21	<10	<10	<0.0001
<a href="#">Proteinuria (Yes/No)</a>	<a href="#">2/12</a>	<a href="#">n.a.</a>		<a href="#">0/7</a>	<a href="#">n.a.</a>		<a href="#">n.a.</a>	<a href="#">5/3</a>	<a href="#">3/3 (2 n.a.)</a>	<a href="#">5/1 (2 n.a.)</a>	<a href="#">n.a.</a>		
Age (years)	57.16 ±11.63	70.33 ±8.49	0.004	64.51 ±8.57	65.45 ±9.67	n.s.	50.64 ±13.25	60.08 ±10.33	57.92 ±14.66	63.17 ±20.48	59.67 ±10.46		n.s.
Time on dialysis (year)	-	2.58 ±2.57		-	3.00 ±3.21		-	-	-	-	5.17 ±4.32		
BMI (kg/m <sup>2</sup> )	29.39 ±6.79	25.81 ±4.78	n.s.	30.99 ±6.99	26.63 ±6.22	n.s.	23.97 ±4.62	26.88 ±3.96	26.87 ±4.01	27.10 ±5.13	29.55 ±7.98		n.s.
Systolic blood pressure (mmHg)	134±15	150±19	0.032	144±14	154±10	n.s.	124±14	143±21	139±19	128±10	143±16		0.017
Diastolic blood pressure (mmHg)	71±8	77 ±9	n.s.	74±8	78±10	n.s.	75 ±9	82 ±9	84 ±12	80 ±6	71 ±16		n.s.
C-Reactive Protein (mg/L)	2.71 ±2.71	13.35 ±14.26	0.003	3.43 ±3.14	16.46 ±15.72	n.s.	2.22 ±1.52	2.75 ±2.22	3.00 ±1.21	3.25 ±4.75	6.2 ±6.12		n.s.
Etiologies													
<i>Diabetes</i>	4	7	n.s.	3	4	n.s.	-	2	1	1	2	n.s. (between all groups)	
<i>Vascular</i>	4	3		4	2		-	0	3	1	2		
<i>Glomerular</i>	1	2		0	0		-	2	1	2	0		
<i>ADPKD</i>	0	0		0	0		-	2	0	2	2		
<i>Other/Unknown</i>	5	3		0	1		-	2	3	2	2		
Medications (%)													
<i>Vitamin K anta</i>	7	7	n.s.	14	0	n.s.	0	25	13	0	0		n.s.
<i>Antiaggregant</i>	0	53	0.0022	0	43	n.s.	0	63	63	50	25		0.044
<i>ACEi/ARB</i>	36	33	n.s.	43	29	n.s.	25	75	63	88	50		n.s.

---

<i>Statin</i>	21	33	n.s.	29	29	n.s.	13	50	50	88	50	n.s.
<i>Cortisone</i>	0	0	n.s.	0	0	n.s.	0	0	0	0	0	n.s.

---

**Table 2. Plasma proteome changes in CKD2-3 versus CKD5/HD patients.** List of 39 modified proteins identified with LC-MS/MS in the complete discovery cohort (adjusted pValue<0.05) and in the age- and sex- matched sub cohort. Bold: protein validated with ELISA in the validation cohort. n.d.: not detected. n.s.: not significant.

Symbol	Name	Molecular weight (kDa)	Discovery cohort (complete)				Discovery sub cohort (matched)		
			Fold change	Direction	Unadjusted pValue	Adjusted pValue	Fold change	Direction	Unadjusted pValue
IGFBP6	Insulin-like growth factor-binding protein 6	23	n.d. in CKD2-3	Up	<a href="#">0.0001</a>	<a href="#">0.0128</a>	n.d. in CKD2-3	Up	<a href="#">0.0156</a>
<b>LYZ</b>	Lysozyme C	15	n.d. in CKD2-3	Up	<a href="#">0.0002</a>	<a href="#">0.0187</a>	n.d. in CKD2-3	Up	<a href="#">0.0156</a>
B2M	Beta-2-microglobulin	12	99,03	Up	<a href="#">0.0000</a>	<a href="#">0.0105</a>	68,3	Up	<a href="#">0.0170</a>
<b>CFD</b>	Complement factor D	24	97,8	Up	<a href="#">0.0000</a>	<a href="#">0.0044</a>	n.d. in CKD2-3	Up	<a href="#">0.0156</a>
PTGDS	Prostaglandin-H2 D-isomerase	19	32,36	Up	<a href="#">0.0003</a>	<a href="#">0.0245</a>	37,36	Up	<a href="#">0.0364</a>
PRPF3	U4/U6 small nuclear ribonucleoprotein Prp3	78	28,16	Up	<a href="#">0.0001</a>	<a href="#">0.0150</a>	20,4	Up	<a href="#">0.0265</a>
WDFY4	WD repeat- and FYVE domain-containing protein 4	354	7,82	Up	<a href="#">0.0002</a>	<a href="#">0.0204</a>	18,77	Up	<a href="#">0.0088</a>
RUSC2	Iporin	161	6,02	Up	<a href="#">0.0000</a>	<a href="#">0.0012</a>	16,41	Up	<a href="#">0.0003</a>
C1S	Complement C1s subcomponent	47 & 28	4,54	Up	<a href="#">0.0001</a>	<a href="#">0.0128</a>	3,7	Up	<a href="#">0.0018</a>
SSX2IP	Afadin- and alpha-actinin-binding protein	71	4,53	Up	<a href="#">0.0001</a>	<a href="#">0.0114</a>	4,04	Up	<a href="#">n.s.</a>
LENG8	Leukocyte receptor cluster member 8	86	4,41	Up	<a href="#">0.0000</a>	<a href="#">0.0044</a>	4,17	Up	<a href="#">0.0009</a>
AMBP	Protein AMBP	21 & 16 & 7	3,98	Up	<a href="#">0.0000</a>	<a href="#">0.0039</a>	4,05	Up	<a href="#">0.0004</a>
CCDC147	Coiled-coil domain-containing protein 147	103	3,57	Up	<a href="#">0.0002</a>	<a href="#">0.0180</a>	6,53	Up	<a href="#">0.0121</a>
SETD2	Histone-lysine N-methyltransferase SETD2	288	3,37	Up	<a href="#">0.0009</a>	<a href="#">0.0499</a>	3,21	Up	<a href="#">0.0282</a>
NR0B1	Nuclear receptor subfamily 0 group B member 1	52	3,15	Up	<a href="#">0.0001</a>	<a href="#">0.0128</a>	5,18	Up	<a href="#">0.0007</a>

C1R	Complement C1r sucomponent	51 & 27	3	Up	<a href="#">0.0001</a>	<a href="#">0.0123</a>	2,46	Up	<a href="#">0.0271</a>
HBB	Hemoglobin subunit beta	16	2,85	Up	<a href="#">0.0006</a>	<a href="#">0.0403</a>	5,53	Up	<a href="#">0.0036</a>
CNNM4	Metal transporter CNNM4	87	2,55	Up	<a href="#">0.0002</a>	<a href="#">0.0204</a>	1,97	Up	<a href="#">n.s.</a>
SLC9A5	Sodium/hydrogen exchanger 5	99	2,23	Up	<a href="#">0.0002</a>	<a href="#">0.0167</a>	2,69	Up	<a href="#">0.0028</a>
TFAM	Transcription factor A, mitochondrial	24	2,15	Up	<a href="#">0.0007</a>	<a href="#">0.0427</a>	2,28	Up	<a href="#">0.0094</a>
ITPR1	Inositol 1,4,5-trisphosphate receptor type 1	314	2,01	Up	<a href="#">0.0006</a>	<a href="#">0.0394</a>	1,75	Up	<a href="#">0.0133</a>
SERPINF1	Pigment epithelium-derived factor	44	1,92	Up	<a href="#">0.0003</a>	<a href="#">0.0228</a>	2,63	Up	<a href="#">0.0037</a>
IGHA1	Ig alpha-1 chain C region	38	1,88	Up	<a href="#">0.0006</a>	<a href="#">0.0403</a>	1,66	Up	<a href="#">0.0096</a>
CSPP1	Centrosome and spindle pole-associated protein 1	146	0,64	Down	<a href="#">0.0008</a>	<a href="#">0.0459</a>	0,77	Down	<a href="#">n.s.</a>
LRRIQ3	Leucine-rich repeat and IQ domain-containing protein 3	74	0,6	Down	<a href="#">0.0003</a>	<a href="#">0.0210</a>	0,62	Down	<a href="#">0.0194</a>
FNBP1	Formin-binding protein 1	71	0,54	Down	<a href="#">0.0001</a>	<a href="#">0.0134</a>	0,54	Down	<a href="#">0.0025</a>
RLTPR	Leucine-rich repeat-containing protein 16C	155	0,5	Down	<a href="#">0.0003</a>	<a href="#">0.0242</a>	0,56	Down	<a href="#">0.0283</a>
<b>HRG</b>	Histidine-rich glycoprotein	58	0,47	Down	<a href="#">0.0006</a>	<a href="#">0.0403</a>	0,39	Down	<a href="#">0.0153</a>
F12	Coagulation factor XII	40 & 26	0,46	Down	<a href="#">0.0009</a>	<a href="#">0.0472</a>	0,45	Down	<a href="#">0.0306</a>
ARHGAP25	Rho GTPase-activating protein 25	73	0,42	Down	<a href="#">0.0008</a>	<a href="#">0.0472</a>	0,7	Down	<a href="#">n.s.</a>
SNIP1	Smad nuclear-interacting protein 1	46	0,37	Down	<a href="#">0.0002</a>	<a href="#">0.0179</a>	0,42	Down	<a href="#">0.0281</a>
ZNF415	Zinc finger protein 415	69	0,3	Down	<a href="#">0.0007</a>	<a href="#">0.0427</a>	0,13	Down	<a href="#">0.0018</a>
CALR3	Calreticulin-3	43	0,29	Down	<a href="#">0.0009</a>	<a href="#">0.0499</a>	0,24	Down	<a href="#">0.0135</a>
ZFAND4	AN1-type zinc finger protein 4	80	0,23	Down	<a href="#">0.0000</a>	<a href="#">0.0014</a>	0,28	Down	<a href="#">0.0087</a>
NOS2	Nitric oxide synthase, inducible	131	0,16	Down	<a href="#">0.0000</a>	<a href="#">0.0044</a>	0,31	Down	<a href="#">0.0255</a>
GPX3	Glutathione peroxidase 3	23	0,15	Down	<a href="#">0.0000</a>	<a href="#">0.0012</a>	0,13	Down	<a href="#">0.0021</a>
PDE4B	cAMP-specific 3,5-cyclic phosphodiesterase 4B	83	0,15	Down	<a href="#">0.0001</a>	<a href="#">0.0128</a>	0,07	Down	<a href="#">0.0009</a>
SBF1	Myotubularin-related protein 5	208	0,05	Down	<a href="#">0.0000</a>	<a href="#">0.0044</a>	0,08	Down	<a href="#">0.0042</a>

---

MIPEP	Mitochondrial peptidase	intermediate	77	0,01	Down	<a href="#">0,0001</a>	<a href="#">0,0105</a>	0,01	Down	<a href="#">0,0421</a>
-------	----------------------------	--------------	----	------	------	------------------------	------------------------	------	------	------------------------

---

## Figure legends

**Figure 1. Overview of the study design.**

**Figure 2. Correlation of quantification of plasma proteins identified using LC-MS/MS with their plasma concentrations.** **A.** Correlation of the published concentrations of the 20 most abundant plasma proteins as measured in the standard plasma using immune assays to their relative LC-MS/MS abundance in the plasma of the CKD2-3 or CKD5/HD patients as quantified in our study using the normalized-ppm mass-peak area (arbitrary units). **B.** Correlation of the absolute concentration of C-reactive protein (CRP) to its relative LC-MS/MS abundance in the plasma of the CKD2-3 or CKD5/HD patients.

**Figure 3. Alteration of the complement and coagulation systems.** Simplified view of the complement (**A**) and coagulation (**B**) systems using Ingenuity pathway designer. Grey: not modified; Green: decreased abundance; Red: increased abundance; White: not detected with LC-MS/MS; Oval shape: pathway-specific proteins; Square shape: proteins shared with different pathways.

**Figure 4. Alteration of the acute phase response pathway.** Simplified view of the acute phase response signaling pathway using Ingenuity pathway designer. Grey: not modified; Green: decreased abundance; Red: increased abundance; White: not detected with LC-MS/MS; Oval shape: pathway-specific proteins; Square shape: proteins shared with different pathways.

**Figure 5. Validation of plasma protein modifications during CKD progression and HD.** Plasma changes of complement factor D (**A, E**), lysozyme C (**B, F**), leucine-rich alpha-2-glycoprotein (**C, G**), and histidine-rich glycoprotein (**D, H**) identified with high confidence using LC-MS/MS were confirmed using ELISA in an independent validation cohort of healthy controls (n=8), and patients with CKD3b (n=8), CKD4 (n=8), CKD5 not in HD (CKD5 no HD, n=8) and CKD5 with HD (CKD5/HD, n=8). \*p<0.05; \*\*\*\*p<0.0001.

**Figure 6. Association of plasma protein levels with mortality in CKD5/HD patients.** Survival analysis was performed on CKD5/HD patients from the discovery cohort stratified based on high (solid line) versus low (dashed line) LC-MS/MS abundance of complement factor

D ([High n=6; Low n=7](#)) (A), lysozyme C ([High n=6; Low n=7](#)) (B), leucine-rich alpha-2-glycoprotein ([High n=6; Low n=7](#)) (C) and histidin-rich glycoprotein ([High n=6; Low n=7](#)) (D).

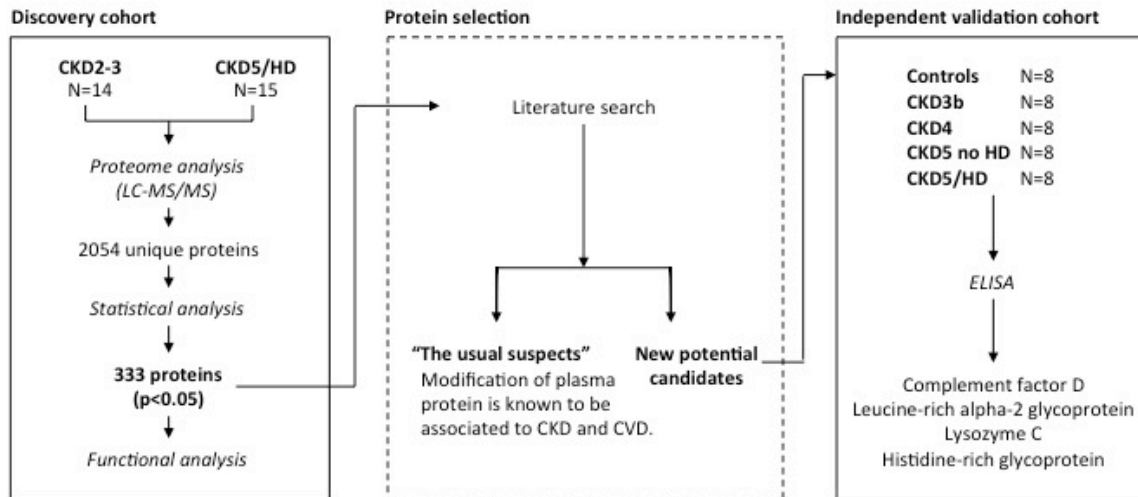


Figure 1

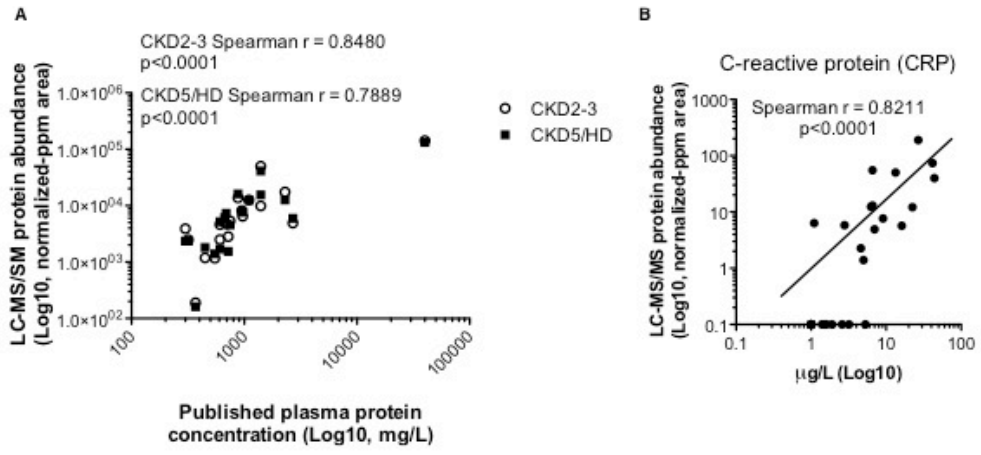


Figure 2



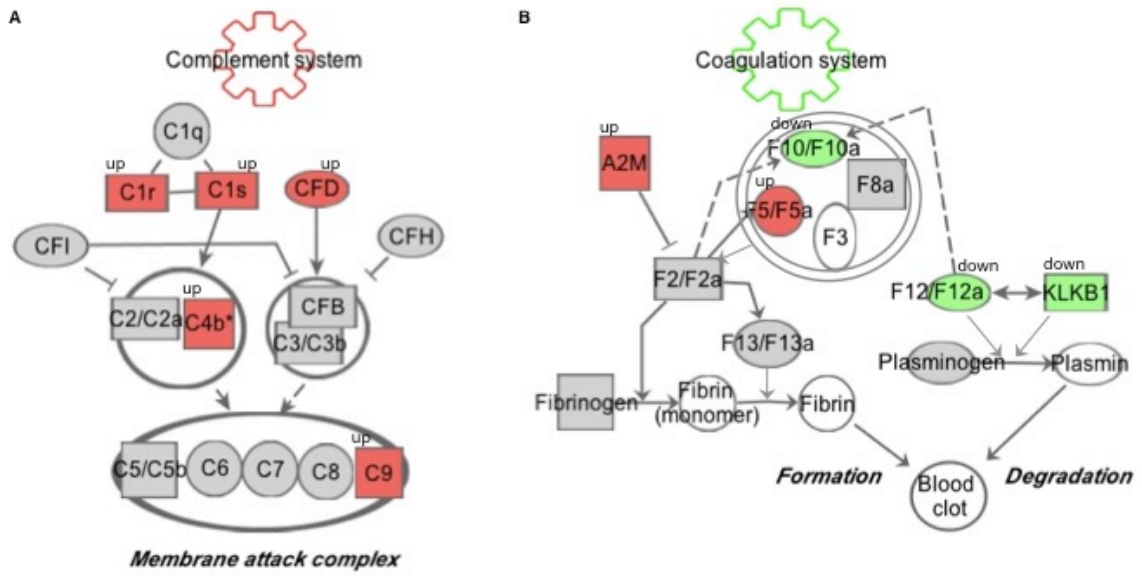


Figure 3

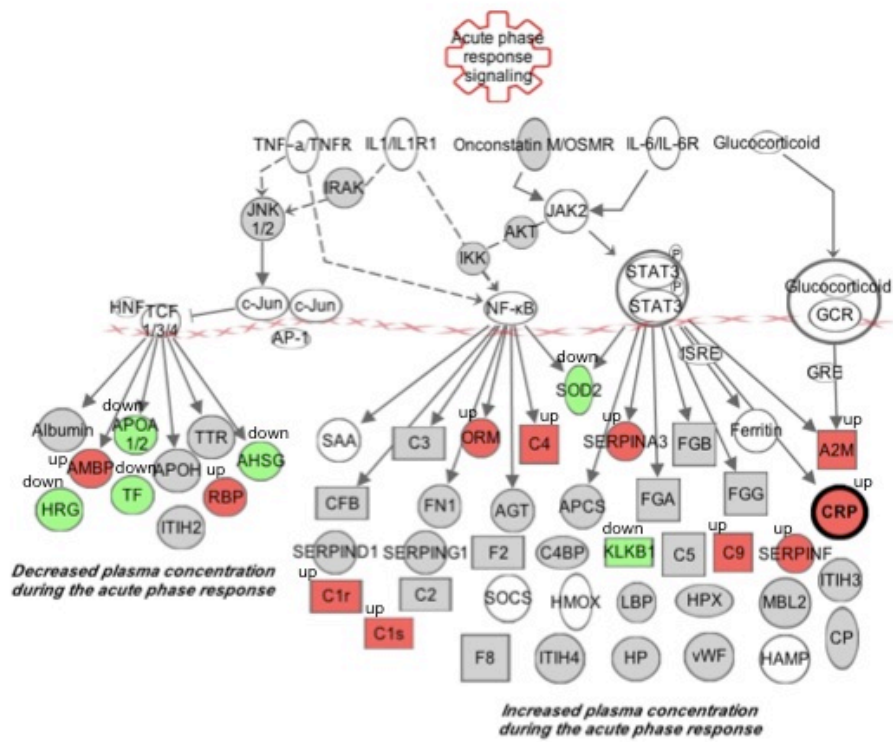
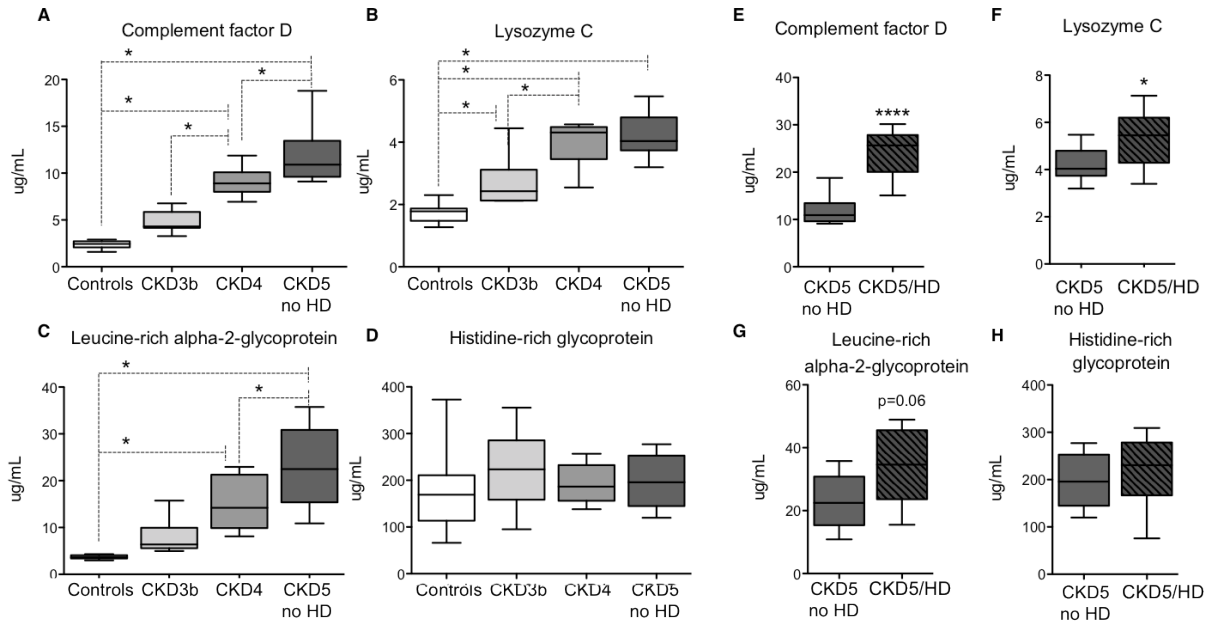


Figure 4



**Figure 5**

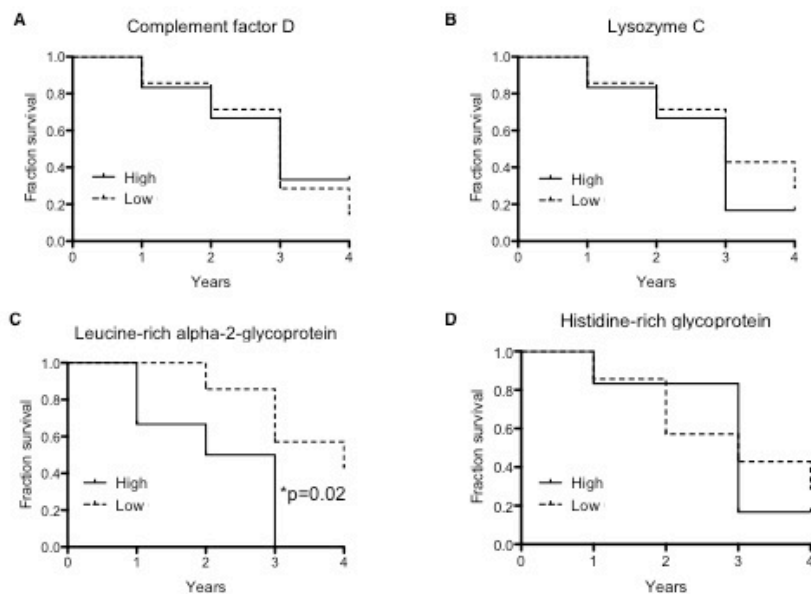


Figure 6

## Supporting Information.

[Supplementary Figure. Correlation of plasma protein concentrations to eGFR.](#) Plasma concentrations of complement factor D, lysozyme C, leucine-rich alpha-2-glycoprotein and histidine-rich glycoprotein using ELISA was correlated to eGFR in the independent validation cohort.

**Supplementary Table 1. Peptide identification using LC-MS/MS.** The table displays the complete list of 9017 tryptic peptides identified using LC-MS/MS associated with their relative abundance (expressed using normalized-ppm mass-peak area (arbitrary units)) and their regulation in the CKD5/HD group compared with CKD2-3 group.

**Supplementary Table 2. Protein identification using LC-MS/MS.** The table displays the complete list of 2054 proteins identified using LC-MS/MS by combination of tryptic peptides, their relative abundance (expressed in ppm) and their regulation in the CKD5/HD group compared with CKD2-3 group.

**Supplementary Table 3. Highly abundant plasma proteins.** The table displays the list of the 20 most abundant plasma proteins associated with their respective published concentrations as measured in the standard plasma using immune assays and their relative LC-MS/MS abundance in the plasma of the CKD2-3 or CKD5/HD patients as quantified in our study using the normalized-ppm mass-peak area (arbitrary units).

**Supplementary Table 4. LC-MS/MS detection of uremic toxins.** The table displays the 25 known low-molecular weight proteins that accumulate in uremic syndrome, their reported normal and uremic concentrations as reviewed in Duranton et al., 2012 (PMID: 22626821) and Vanholder et al., 2003 (PMID: 12675874) and their detection using LC-MS/MS.

**Supplementary Table 5. Functional analysis of plasma proteome changes.** List of functional pathways modified using Gene Ontology (GO) and Ingenuity Pathway Analysis software (IPA) associated with significantly modified proteins. Bold: proteins with adjusted pValue<0.05.