



Effect of pressure and temperature on viscosity of a borosilicate glass

Linfeng Ding, Manuel Thieme, Sylvie Demouchy, Clemens Kunisch, Boris J.P. Kaus

► To cite this version:

Linfeng Ding, Manuel Thieme, Sylvie Demouchy, Clemens Kunisch, Boris J.P. Kaus. Effect of pressure and temperature on viscosity of a borosilicate glass. *Journal of the American Ceramic Society*, 2018, 101 (9), pp.3936 - 3946. 10.1111/jace.15588 . hal-01828542

HAL Id: hal-01828542

<https://hal.science/hal-01828542>

Submitted on 3 Jul 2018

HAL is a multi-disciplinary open access archive for the deposit and dissemination of scientific research documents, whether they are published or not. The documents may come from teaching and research institutions in France or abroad, or from public or private research centers.

L'archive ouverte pluridisciplinaire **HAL**, est destinée au dépôt et à la diffusion de documents scientifiques de niveau recherche, publiés ou non, émanant des établissements d'enseignement et de recherche français ou étrangers, des laboratoires publics ou privés.



Distributed under a Creative Commons Attribution - NonCommercial - NoDerivatives 4.0 International License

Effect of pressure and temperature on viscosity of a borosilicate glass

Linfeng Ding^{1*}, Manuel Thieme², Sylvie Demouchy², Clemens Kunisch³, Boris J.P. Kaus¹

¹Institute of Geosciences, Johannes Gutenberg University, 55128 Mainz, Germany

²Geosciences Montpellier, Université de Montpellier & CNRS, 34095 Montpellier, France

³Schott AG, Corporate Research & Development, 55122 Mainz, Germany

**Corresponding author: dingli@uni-mainz.de*

Abstract

During industrial glass production processes, the actual distribution of stress components in the glass during scribing remains, to date, poorly quantified, and thus continues to be challenging to model numerically. In this work, we experimentally quantified the effect of pressure and temperature on the viscosity of SCHOTT N-BK7[®] glass, by performing *in situ* deformation experiments at temperatures between 550 and 595 °C and confining pressures between 100 MPa and 300 MPa. Experiments were performed at constant displacement rates to produce almost constant strain rates between $9.70 \times 10^{-6} \text{ s}^{-1}$ and $4.98 \times 10^{-5} \text{ s}^{-1}$. The resulting net axial stresses range from 81 MPa to 802 MPa, and the finite strains range from 1.4 % to 8.9 %. The mechanical

results show that the SCHOTT N-BK7[®] glass is viscoelastic near the glass transition temperature at 300 MPa of confining pressure. To elucidate the data, we incorporated both 1-element and 2-element generalized Maxwell viscoelastic models in an inversion approach, for which we provide MATLAB scripts. Results show that the 2-element Maxwell model fits the experimental data well. The stress decreases with increasing temperature at 300 MPa and the temperature dependence yields a similar activation energy ($601 \pm 10 \text{ kJ} \cdot \text{mol}^{-1}$ or $\Delta H/R = 7.2 \times 10^4 \text{ K}$) to a previously reported value at 1-atm ($615 \text{ kJ} \cdot \text{mol}^{-1}$ or $\Delta H/R = 7.4 \times 10^4 \text{ K}$). The SCHOTT N-BK7[®] glass shows a limited linear increase of viscosity with increasing pressure of $\sim 0.1 \log_{10}(\text{Pa} \cdot \text{s})/100 \text{ MPa}$, which is in agreement with the most recent two-internal-parameter relaxation model (based on experiments).

Keywords: Borosilicate glass; high pressure; deformation experiment; viscosity; Maxwell model.

1. Introduction

Hardness measurements^{1, 2} have reported that glass flows viscously at room temperature as well as at high temperature (e.g., up to 630 °C for soda-lime-silica float glass³). Nevertheless, during industrial production processes, scribing with defined tools and breaking are used to separate glass sheets. If scribing velocity or scribing force is not well adjusted, it can lead to poor edge quality with non-desirable cracks at the edges or cracks are not deep enough (or sufficiently well developed) for further breaking.^{1, 4, 5} The propagation of these cracks, desired or not, depends on the stress state underneath the indenter during scribing.^{6, 7} The actual distribution of stress components in the glass during scribing remains, to date, poorly quantified, and thus continues to be challenging to model numerically.^{8, 9} To better quantify the viscous contribution to the deformation¹⁰ underneath an indenter or scribing tool, the effect of pressure on the viscosity of an industrial optical glass, needs to be quantified experimentally by *in situ* measurements.

The temperature dependence of the viscosity of glasses at ambient pressure has already been studied experimentally leading to numerous temperature-dependent models of viscosity for glasses. Notably, the Vogel-Tammann-Fulcher (VTF) model¹¹ which is similar to the Williams-Landel-Ferry (WLF) model,¹² the free-volume model,^{13, 14, 15} the Adam-Gibbs (AG) model¹⁶ and the Mauro-Yue-Ellison-Gupta-Allan(MYEGA) model.¹⁷ The VTF model can accurately fit the temperature dependence of viscosity of SCHOTT N-BK7[®] glass in the range from 1 to 13 log₁₀(Pa·s).

Several experimental studies have quantified the pressure dependence of the viscosity of silicate melts, with a special focus on melts relevant to geological and volcanic systems, such as molten olivine, molten jadeite, dacite and basalt at very high temperatures ($> 1700\text{ }^{\circ}\text{C}$)^{18, 19, 20, 21} and pressure up to 8 GPa. Different behaviors were observed with increasing pressure as a function of the degree of polymerization.^{19, 22} The polymerization parameter is best described by the ratio of non-bridging oxygen (NBO) and tetrahedrally coordinated cations (T, e.g., Si^{4+} , Al^{4+} , Ti^{4+} , Fe^{3+}). The ratio of NBO/T can be simply calculated by the ratio of O/T at ambient pressure with satisfying accuracy.¹⁹ However, under high pressure, highly polymerized silicate melts ($\text{NBO/T} < 1$, e.g., obsidian, basalt, dacite) have a lower tetrahedral connectivity (less oxygen atoms in TO_4 will bond to adjacent tetrahedron and thus forming less 3D networks) than at ambient pressure. These highly polymerized silicate melts¹⁹ display a viscosity decrease with an increase of pressure. While the viscosity of depolymerized silicate melts ($\text{NBO/T} \geq 2$, molten peridotite, molten olivine, Al-poor melt), with higher tetrahedral connectivity, show a viscosity increase with increasing pressure.¹⁹ For borosilicate glasses, in addition to the NBO/T ratio, the structure is greatly influenced by the BO_3/BO_4 ratio.²³ Indeed, the viscosity model presented by Jantzen²⁴ showed an irregular behavior of viscosity versus NBO in radio-active borosilicate glasses, making the prediction of the pressure effect on borosilicate problematic.

Previous experimental studies on the effect of pressure on viscosity and density of glasses have mostly reported a linear relationship for pressure dependence. For example, the pressure dependence of the viscosity of B_2O_3 , studied by Sperry and Makenzie²⁵ at 380-465 °C and from 0.1 to 30 MPa, demonstrated a linear increase of viscosity with increasing pressure ($\Delta\eta/\Delta P = 0.28$ to $0.59 \log_{10}(\text{Pa}\cdot\text{s})/100 \text{ MPa}^{25}$). A special parallel-plate viscometer was developed by Schulze et al.,²⁶ using an internally heated pressure vessel (IHPV) to deform the standard melt DDG1, Di_{100} ($Di=CaMgSi_2O_6$) and $Ab_{55}Di_{45}$ ($Ab=NaAlSi_3O_8$) silicate melt. And their results also suggest a linear change with increasing pressure up to 350 MPa ($\Delta\eta/\Delta P = -0.12$ to $0.23 \log_{10}(\text{Pa}\cdot\text{s})/100 \text{ MPa}^{26}$). Deformation of float glass with high water content²⁷ likewise reported a linear viscosity increase with increasing pressure from 100 MPa to 400 MPa, and a negative correlation with increasing water content (0.03-4.87 wt.%), ($\Delta\eta/\Delta P < 0.22 \log_{10}(\text{Pa}\cdot\text{s})/100 \text{ MPa}^{27}$). To date, the latest high-pressure dataset available for SCHOTT N-BK7[®] is based on relatively fast-cooled glass under high pressure (0.5 GPa to 1.5 GPa using a piston cylinder). Combined with the post-mortem density and volume recovery measurements,²⁸ which also indicate a linear viscosity increase with increasing pressure ($\Delta\eta/\Delta P = 0.05 \log_{10}(\text{Pa}\cdot\text{s})/100 \text{ MPa}^{28}$).

Several phenomenological models^{29, 30, 31, 32} describe the time dependence of glass relaxation as a function of both temperature and pressure history. A recent relaxation model was developed by Ding et al.,²⁸ following the approach of Gupta³³ to use two

internal parameters, named fictive temperature³⁴ (T_f) and fictive pressure³³ (P_f). This type of phenomenological models can predict the pressure dependence of the viscosity of glass forming materials through the Maxwell relation:

$$\eta = G\tau \quad (1)$$

where η is viscosity, τ is the Maxwell relaxation time, and G is the unrelaxed elastic shear modulus.³⁵ For instance, the two-internal-parameter relaxation model presented by Ding et al.,²⁸ predicts a positive linear dependence of pressure on viscosity for pressures up to 1.5 GPa based on the density and volume recovery measurements. On the other hand, some studies directly express the effect of pressure on the viscosity model. For example, the model proposed by Avramov³⁶ describes the pressure dependence of viscosity by relating the viscosity to the entropy of the glass forming melts, using a master equation ϕ . The equation derived by Gupta,³⁷ which follows the Adam-Gibbs model,¹⁶ predicting a negative pressure dependence of viscosity.

SCHOTT N-BK7[®] is available in large formats with high homogeneity. Internally at SCHOTT, it is used as a reference material. It was already used in several studies,^{38, 39, 40, 5} but the rheological properties were never quantified experimentally *in situ* at pressures above 1-atm. To quantify the viscosity of SCHOTT N-BK7[®] glass, compared to (28) we use a totally different experiment set up by performing *in situ* deformation experiments in a gas-medium pressure vessel.

2. Experimental method

2.1 Sample description and preparation

The borosilicate glass SCHOTT N-BK7[®] (chemical composition: 70.0 % SiO₂, 11.5 % B₂O₃, 9.5 % Na₂O, 7.5 % K₂O and 1.5 % BaO) is an optical glass widely used for lenses and prisms, due to its high homogeneity and high light yield. The density of SCHOTT N-BK7[®] at room temperature and ambient pressure is $2.508 \pm 0.001 \text{ g/cm}^3$. The glass transition temperature $T_g = 561 \text{ }^\circ\text{C}$ is defined as the temperature at which the viscosity is $12 \log_{10}(\text{Pa}\cdot\text{s})$. Cylinders of SCHOTT N-BK7[®] with a diameter of $9.95 \pm 0.05 \text{ mm}$ and a length of $17.00 \pm 0.10 \text{ mm}$ were drilled from large glass blocks, which had been slowly cooled at a rate of $-0.4 \text{ }^\circ\text{C/h}$. Both ends of the glass cylinder were mirror polished, and parallelism of both extremities was ensured.

2.2 Deformation experiments

Uniaxial deformation experiments were performed with a high temperature and high pressure *in situ* deformation gas-medium apparatus also called a Paterson Press.⁴¹ The apparatus is used with a routine confining pressure of $300 \pm 1 \text{ MPa}$, but the confining pressure can range from 50 to 350 MPa. Using Argon as pressure-medium prevents chemical reactions with the samples. Diffusion experiments at high pressure and high temperature have reported an Argon diffusivity of about $-3.3 \times 10^{-20} \text{ cm}^2 \text{ s}^{-1}$ at $600 \text{ }^\circ\text{C}$ in silicate glasses.⁴² Thus, for the short duration of our experiments (1h), the

incorporation of Argon is considered negligible. The force is measured using an internal load cell (2 kN to 75 kN), resulting in an uncertainty in net axial stress (σ_{load}) of less than 20 MPa. In this study, uniaxial compressive deformation experiments on SCHOTT N-BK7[®] were performed at constant displacement rates ($\sim 1 \times 10^{-5}$ to $\sim 5 \times 10^{-5}$ mm/s) resulting in almost constant strain rates.

For the deformation experiment, the glass samples were encapsulated with zirconia and alumina pistons and alumina spacers inside a copper jacket as shown in Fig.1, following well-established experimental protocols.^{43, 44, 45, 46, 47}

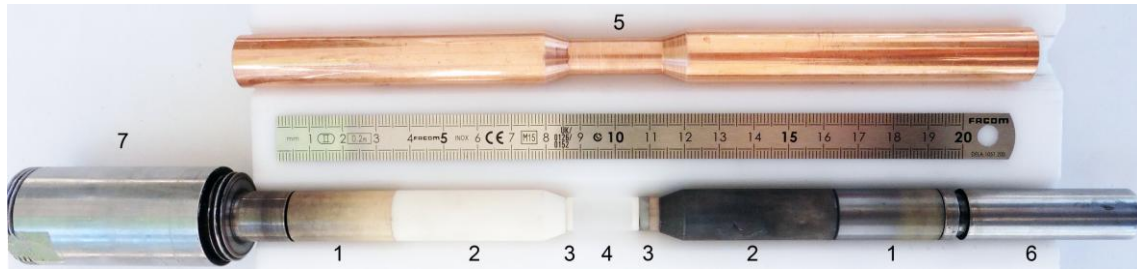


Fig. 1 (a) Photograph of the high-pressure assembly for a deformation experiment; 1- Zirconia piston; 2-Alumina piston; 3-Alumina spacers; 4-SCHOTT N-BK7[®] glass cylinder; 5-Fitted copper jacket; 6-Bottom steel piston; 7-Top steel piston.

A self-made internal furnace is used to anneal the sample at high temperature, with a low thermal gradient (± 5 °C) along the sample zone. The thermal gradient is established from separate calibration experiments before deformation experiments. The temperature was increased at a rate of ~ 15 °C/min to the target temperature and maintained stable for 20 to 30 minutes to insure sufficient relaxation of the glass

structure before applying an axial load to the sample. The temperature was kept constant using a proportional–integral–derivative (PID) controller during the mechanical experiment as a small variation in temperature could result in significant variations of viscosity. A data point is recorded each 1 or 2 s. After the end of the deformation, the piston was maintained in position, and the temperature was decreased at a rate of 70 °C/min by decreasing power. Afterward, the pressure was slowly released at a rate of ~10 MPa/min to ambient pressure.

2.3 Data treatment

The mechanical data must be corrected to account for several experimental approximations adequately. Firstly, the displacement has to be corrected for the elastic distortion⁴⁸ of the apparatus (stiffness = 82.5 kN/mm). Secondly, to determine the contribution of the copper jacket to the measured force, the power flow law for copper from⁴⁹ is used. Thirdly, values of stresses and strain rates were corrected for instantaneous changes in the cross-sectional area of the copper jacket and the glass cylinder during deformation assuming that samples maintained a cylindrical shape (i.e., negligible barreling) and constant volume. These corrections of the mechanical data are identical to corrections used in numerous published experimental studies^{43, 44, 45, 46, 47, 50} on polycrystalline silicates using the same gas-medium deformation apparatus, guaranteeing that this source of uncertainty was properly corrected.

The mean stress (total pressure) on the glass sample during deformation is defined as:

$$\sigma_{mean} = (\sigma_{load} + 2\sigma_{Ar}) / 3 \quad (2)$$

where σ_{load} is the net uniaxial stress⁵¹ measured by an internal load cell and σ_{Ar} is the confining pressure of Argon.

3. Results

Experimental conditions and measured mechanical data obtained from the *in situ* deformation experiments are reported in Table 1. Repeating the experiments permits to check the reproducibility of the mechanical results and the number of the repeated experiments at identical experimental conditions are reported in Table 1 and shown in Figure S1 (supplementary material). A few samples showed a variation in diameter along the deformed cylinder post-deformation (*i.e.*, classic barreling), which could indicate that the temperature distribution on the sample is not perfectly homogenous. Or more likely that, the viscous flow continued to occur post-data acquisition and during quenching, when the temperature distribution has become heterogeneous (*i.e.*, the bottom cylinder being hotter than top).

Table 4-1 Experimental conditions for deformation experiments and mechanical results

Samples	Length [mm]	Diameter [mm]	Confining Pressure [MPa]	Temperature [°C]	Displacement Rate [mm/s]	Strain Rate [s ⁻¹]	Finite Strain [%]	Axial Stress [MPa]	Mean Stress [MPa]	Viscosity* Log ₁₀ [Pa·s]	Repeat times
<i>Constant pressure and strain rate, variable temperature</i>											
LD6	17.10	9.95	300	550 ± 5	5 × 10 ⁻⁵	1.50 × 10 ⁻⁵	1.4	802 ± 6	467 ± 7	-	2
LD9	17.07	9.95	303	565 ± 5	5 × 10 ⁻⁵	3.89 × 10 ⁻⁵	3.9	792 ± 6	466 ± 7	-	1
LD15	17.05	9.95	302	575 ± 5	5 × 10 ⁻⁵	4.82 × 10 ⁻⁵	6.5	560 ± 6	388 ± 7	12.6 ± 0.2	3
LD17	17.10	9.95	303	585 ± 5	5 × 10 ⁻⁵	4.77 × 10 ⁻⁵	8.7	219 ± 6	275 ± 7	12.2 ± 0.2	1
LD18	17.10	9.95	300	595 ± 5	5 × 10 ⁻⁵	4.98 × 10 ⁻⁵	8.4	81 ± 6	227 ± 7	11.7 ± 0.2	2
<i>Constant temperature and strain rate, variable pressure</i>											
LD13	17.05	9.95	105	575 ± 5	5 × 10 ⁻⁵	4.67 × 10 ⁻⁵	5.7	340 ± 6	183 ± 7	12.4 ± 0.2	2
LD16	17.05	9.95	203	575 ± 5	5 × 10 ⁻⁵	4.86 × 10 ⁻⁵	6.5	430 ± 6	279 ± 7	12.5 ± 0.2	3
LD15	17.05	9.95	302	575 ± 5	5 × 10 ⁻⁵	4.82 × 10 ⁻⁵	6.5	560 ± 6	388 ± 7	12.6 ± 0.2	3
<i>Constant temperature and pressure, variable strain rate</i>											
LD20	17.00	9.95	301	575 ± 5	1 × 10 ⁻⁵	9.70 × 10 ⁻⁶	7.6	144 ± 6	249 ± 7	12.7 ± 0.2	1
LD19	17.02	9.95	302	575 ± 5	3 × 10 ⁻⁵	2.88 × 10 ⁻⁵	8.9	235 ± 6	280 ± 7	12.4 ± 0.2	1
LD15	17.05	9.95	302	575 ± 5	5 × 10 ⁻⁵	4.82 × 10 ⁻⁵	6.5	560 ± 6	388 ± 7	12.6 ± 0.2	3

* Viscosity is calculated according to Eq. 4.1

3.1 Mechanical data

The stress-strain curves for all deformation experiments are shown in Fig. 2. The deformation experiments at constant displacement rates yield strain rates ranging from $9.70 \times 10^{-6} \text{ s}^{-1}$ to $4.98 \times 10^{-5} \text{ s}^{-1}$ and finite strains ranging from 1.4 % to 8.9 %. To find the proper temperature and strain rate to study the pressure dependence of the viscosity of our samples, we ran experiments at different temperatures. The temperature dependence is shown in Fig. 2a for experiments performed at a confining pressure of 300 MPa, at a constant displacement rate of $\sim 5 \times 10^{-5} \text{ s}^{-1}$ and for temperatures from 550 °C up to 595 °C. The glass sample showed an approximately constant stress increase at 550 °C, with the stress-strain curve displaying an almost pure elastic behavior. Between 565 and 575 °C, the samples behave viscoelastic. Steady state (viscous) flow is finally achieved at 595 °C. The stress at 595 °C (81 MPa, sample LD18) is rather low with an applied force of approximately 7 kN.

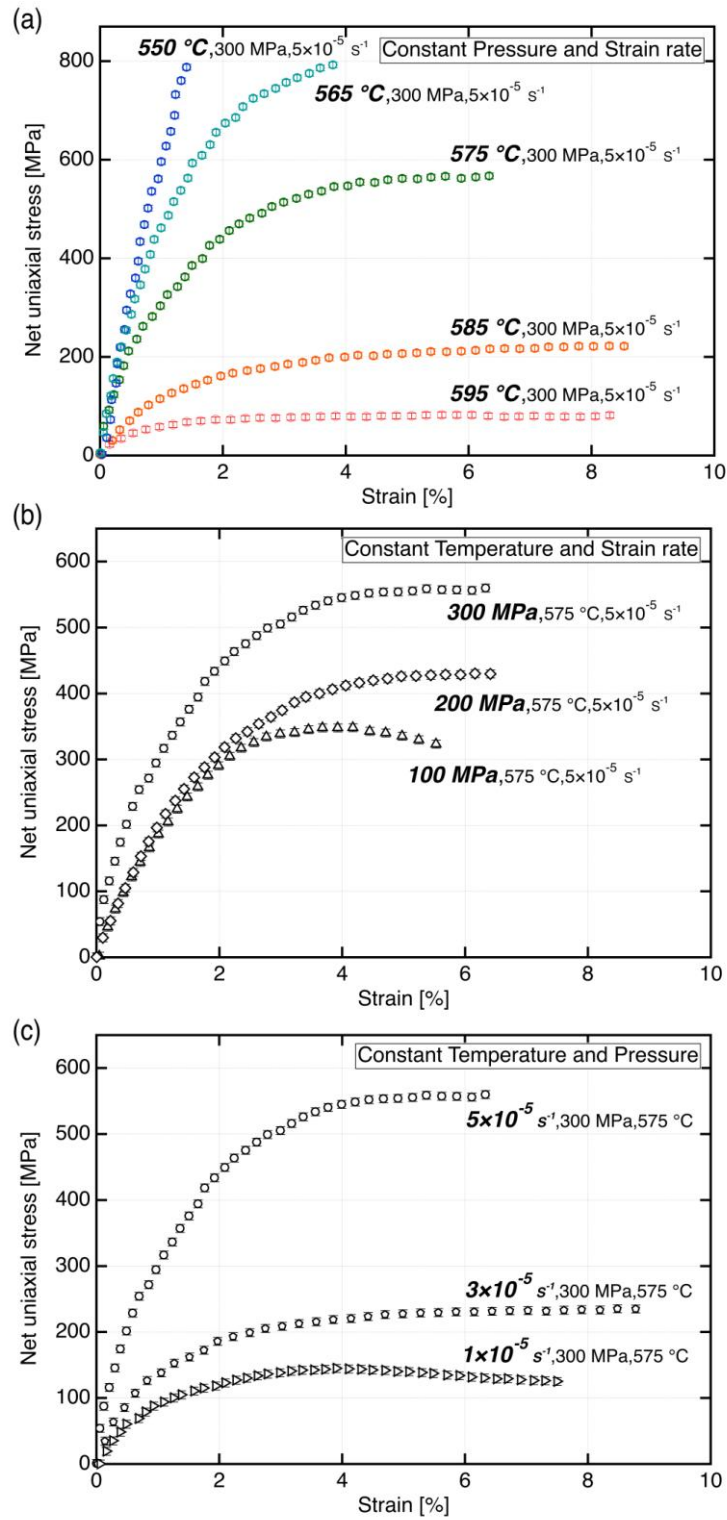


Fig. 2 Net uniaxial stress versus strain (a) at a constant confining pressure and constant strain rate for increasing temperatures; (b) at a constant temperature and constant strain rate for increasing confining pressures; (c) at a constant temperature and constant confining pressure for increasing strain rates. For all curves, 1 data point out of every 50 points is shown for clarity.

To determine the pressure dependence, we conducted experiments at a constant temperature of 575 °C, at a constant strain rate of $\sim 5 \times 10^{-5} \text{ s}^{-1}$ and confining pressures ranging from 100 MPa to 300 MPa as shown in Fig. 2b. The σ_{load} increases with increasing pressure from 340, to 430, and to 560 MPa for a confining pressure of 100, 200 and 300 MPa, respectively (see Table 1). The sample at 100 MPa confining pressure reached steady-state deformation after approximately 4% of strain, which is significantly earlier than for the experiments at 200 MPa and 300 MPa. The stress of the experiment at 100 MPa slightly decreases after reaching steady state, indicating some limited weakening.

To quantify the effect of strain rate, experiments at a constant temperature of 575 °C, a constant pressure of 300 MPa and axial deformation at different strain rates ranging from $9.7 \times 10^{-6} \text{ s}^{-1}$ to $4.82 \times 10^{-5} \text{ s}^{-1}$, as shown in Fig. 2c. The maximal stress increases with increasing strain rate. Indeed, the σ_{load} increases by $\sim 91 \text{ MPa}$ from $\sim 1 \times 10^{-5} \text{ s}^{-1}$ to $\sim 3 \times 10^{-5} \text{ s}^{-1}$, while the σ_{load} increases by $\sim 325 \text{ MPa}$ from $\sim 3 \times 10^{-5} \text{ s}^{-1}$ to $\sim 5 \times 10^{-5} \text{ s}^{-1}$ (Fig. 2c).

3.2 Maxwell model

We use both a single Maxwell and a two-Maxwell viscoelastic model to fit the experimental data combined with an optimization algorithm (MATLAB scripts are provided as supplementary materials).

The single Maxwell viscoelastic model (1-Maxwell) is defined by⁵²

$$\dot{\epsilon} = \dot{\epsilon}_{ela} + \dot{\epsilon}_{vis} = \frac{1}{G} \frac{d\sigma}{dt} + \frac{\sigma}{\eta} \quad (3)$$

$$\frac{d\sigma}{dt} = G\dot{\epsilon} - \frac{G\sigma}{\eta} \quad (4)$$

where $\dot{\epsilon}$ is the total strain rate, $\dot{\epsilon}_{ela}$ is the strain rate of elastic deformation, $\dot{\epsilon}_{vis}$ is the strain rate of viscous deformation, σ is the shear stress converted from the net uniaxial stress by assuming a constant Poisson's ratio of 0.206 for SCHOTT N-BK7[®], η is the viscosity and G is the elastic shear modulus. To keep the model simple, we neglect the contributions from the volumetric bulk deformation strain. Under a constantly applied strain rate $\dot{\epsilon}_0$, the stress can be solved by integrating over time as:

$$\sigma(t) = \eta \left(1 - e^{-\frac{t}{\tau}}\right) \dot{\epsilon}_0 + \sigma(0)e^{-\frac{t}{\tau}} \quad (5)$$

where τ is the Maxwell relaxation time can be calculated by Eq. (1), and $\sigma(0)$ is the initial stress (in the model, we assume $\sigma(0) = 0$). For the elastic shear modulus, we assume G as a free parameter, determined during the inversion process. In the limited temperature range of the present study, the dependence of viscosity on temperature can be described by an Arrhenius law. To account for the influence of pressure on viscosity, the Arrhenius equation is extended to Eq. (6) by introducing an activation volume as has been done in several studies.^{28, 53}

$$\eta = \eta_0 e^{\frac{E+PV_a}{RT}} \quad (6)$$

Combining Eq. (6) with the idea from Narayanaswamy⁵⁴, we assume that the viscosity depends on temperature and pressure as

$$\eta = \eta_0 e^{\frac{\Delta H + PV_a}{RT} - \frac{\Delta H + P_{ref}V_a}{RT_{ref}}} \quad (7)$$

where $P_{ref} = 10^5$ Pa and $T_{ref} = 561$ °C are reference material parameters, and the initial viscosity η_0 , activation energy $\frac{\Delta H}{R}$ and activation volume V_a are free parameters²⁸.

The 1-Maxwell model can fit each experiment separately very well by allowing a change of elastic shear modulus G between the different experiments. However, the elastic shear modulus is known to be nearly constant in both glass science and geoscience applications^{54, 55, 56, 57} for small pressure changes (<2 GPa). Therefore, we tested fitting a single set of material parameters to all experimental mechanical data using a 1-Maxwell model. In order to fit the model to the experiments, we employ a multidimensional unconstrained nonlinear minimization optimization algorithm (using the Nelder-Mead Simplex search algorithm as incorporated in the MATLAB function `fminsearch`⁵⁸), to find the best-fit parameters for the model. The best-fit model we obtained (after experimenting with a range of starting values $\eta = 10^{12}$ Pa · s, $G = 34$ GPa, $\Delta H/R = 7.4 \times 10^4$ K, $V_a = 8.129 \times 10^{-6}$ m³/mol⁵⁹) is shown in Fig. 3a (best-fit yields $G = 24.9$ GPa $\Delta H/R = 5.4 \times 10^4$ K which are different than the reference value of $G_{ref} = 34$ GPa⁵⁹ and $(\Delta H/R)_{ref} = 7.4 \times 10^4$ K at 1-atm), which is rather poor.

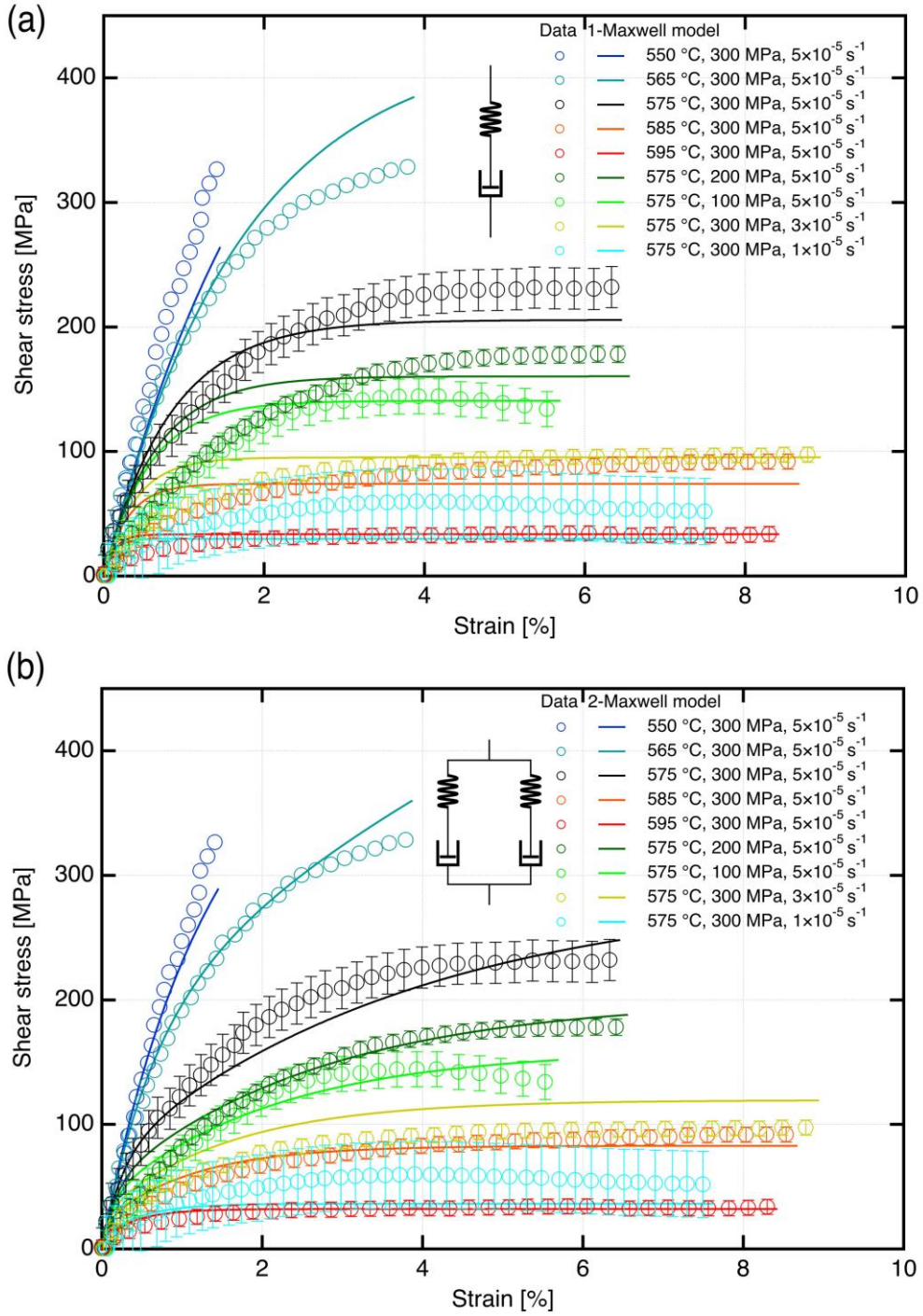


Fig. 3 (a) Best-fit from the 1-Maxwell model with the fitting parameters: $\eta_0 = 4.9 \times 10^{12} \text{ Pa}\cdot\text{s}$, $G = 24.9 \text{ GPa}$, $\frac{\Delta H}{R} = 5.4 \times 10^4 \text{ K}$, and $V_a = 2.0 \times 10^{-6} \text{ m}^3/\text{mol}$; (b) Best-fit from the 2-Maxwell model with the fitting parameters: $\eta_0 = 5.4 \times 10^{12} \text{ Pa}\cdot\text{s}$, $G = 34.2 \text{ GPa}$, $\frac{\Delta H}{R} = 6.1 \times 10^4 \text{ K}$, $V_a = 2.9 \times 10^{-6} \text{ m}^3/\text{mol}$, $w = 0.83$, and $\text{fac} = 15.6$. The uncertainty of the shear stress is calculated from the standard deviation of steady-state viscosity and strain rate.

For many glass types, more than one Maxwell element is needed to describe the experimental data.⁴⁰ To improve the fitting, we applied a generalized Maxwell model with 2 Maxwell elements⁵⁹ (2-Maxwell model applied, MATLAB script available in supplemental materials), which models the rheology of glass as two parallel Maxwell bodies, which was previously found to approximate the uniaxial stress relaxation of glass successfully.⁶⁰ For the stress revolution, we introduce a weighting parameter w for 2-Maxwell model and a free parameter fac to separate the viscosities,⁵⁴

$$\sigma(t) = (1 - w)\sigma_1 + w\sigma_2 \quad (8)$$

where the stresses are

$$\sigma_1 = \eta_1 \left(1 - e^{-\frac{t}{\tau_1}}\right) \dot{\epsilon}_0 + \sigma_1(0) e^{-\frac{t}{\tau_1}} \quad (9)$$

$$\sigma_2 = \eta_2 \left(1 - e^{-\frac{t}{\tau_2}}\right) \dot{\epsilon}_0 + \sigma_2(0) e^{-\frac{t}{\tau_2}} \quad (10)$$

and the viscosities are

$$\eta_1 = \eta_0 / (1 - w + w/fac) e^{\frac{\Delta H + PV_a}{RT} - \frac{\Delta H + P_{ref} V_a}{RT_{ref}}} \quad (11)$$

$$\eta_2 = \eta_1 / fac \quad (12)$$

$$\tau_1 = \eta_1 / G_1 \quad (13)$$

$$\tau_2 = \eta_2 / G_2 \quad (14)$$

$$G = (1 - w)G_1 + wG_2 \quad (15)$$

$$\eta = (1 - w)\eta_1 + w\eta_2 \quad (16)$$

The best overall fit parameters and curves of the 2-Maxwell model are shown in Fig. 3b. We note that the best-fit is not unique, and it is slightly influenced by the initial

guess of the free parameters. We have performed a series of tests with different initial parameters and found an initial guess of $\eta = 4.9 \times 10^{12} \text{ Pa} \cdot \text{s}$ (best-fit of 1-Maxwell model), $G = 34 \text{ GPa}$, $\Delta H/R = 7.4 \times 10^4 \text{ K}$, $V_a = 8.129 \times 10^{-6} \text{ m}^3/\text{mol}^{59}$, $w=0.7$ and $\text{fac} = 10$ to give an overall lowest misfit. The best-fit $G=34.2 \text{ GPa}$ is fit with the reference value of 34 GPa ,⁵⁹ while the best-fit activation energy $\Delta H/R = 6.1 \times 10^4 \text{ K}$ ($482 \text{ kJ} \cdot \text{mol}^{-1}$) is lower than the value obtained at 1-atm of $\Delta H/R = 7.4 \times 10^4 \text{ K}$ ($615 \text{ kJ} \cdot \text{mol}^{-1}$).⁵⁹ The fitting is improved compared to the 1-Maxwell model. Still, the fit is not perfect, especially for the data measured at $1 \times 10^{-5} \text{ s}^{-1}$ and $3 \times 10^{-5} \text{ s}^{-1}$. A generalized Maxwell model with 3-Maxwell elements was also tested, but the results show no significant fitting improvement compared to the 2-Maxwell model. Therefore, the outcome of a 3-Maxwell model is not further discussed here.

3.3 Viscosity

The glass sample is in a uniaxial stress state during the deformation experiment, and the viscosity is then calculated as follows:⁶¹

$$\eta = \sigma / (3\dot{\epsilon}) \quad (17)$$

where σ is the net uniaxial stress, and $\dot{\epsilon}$ is the instantaneous strain rate. The uncertainty of the applied force results in a stress uncertainty of $\pm 6 \text{ MPa}$. Together with a 1 % error of the strain rate, this yields an uncertainty of the viscosity of $\pm 0.01 \log_{10}(\text{Pa} \cdot \text{s})$. The uncertainty of the temperature distribution along the sample (maximal $\pm 5 \text{ }^\circ\text{C}$) would yield more important uncertainties on viscosity, up to $\pm 0.22 \log_{10}(\text{Pa} \cdot \text{s})$,

based on the Arrhenius equation at 1-atm. The latter values are reported in Table 1. Our results show that to change the viscosity of SCHOTT N-BK7[®] glass by $0.1 \log_{10}(\text{Pa}\cdot\text{s})$ has to change the temperature by $2.5 \text{ }^{\circ}\text{C}$ (at 300 MPa) or the pressure by 100 MPa. As shown in Fig. 4a, the viscosity decreases by $\sim 0.4 \log_{10}(\text{Pa}\cdot\text{s})/10 \text{ }^{\circ}\text{C}$ from $575 \text{ }^{\circ}\text{C}$ to $595 \text{ }^{\circ}\text{C}$. Furthermore, the viscosity curve at $595 \text{ }^{\circ}\text{C}$ furthermore takes less time to achieve steady state than deformation experiments at $575 \text{ }^{\circ}\text{C}$.

The effect of pressure on the viscosity of SCHOTT N-BK7[®] is rather small. Viscosity-time curves for 100 MPa and 200 MPa of confining pressure, shown in Fig. 4b, almost overlap each other for finite strains $< 1 \%$. Increasing the strain rate to $\sim 5 \times 10^{-5} \text{ s}^{-1}$ results in a viscosity offset of $\pm 0.2 \log_{10}(\text{Pa}\cdot\text{s})$ (Fig. 4c), which is close to the uncertainty of the machine and also consistent with the results from the 2-Maxwell model. Besides, samples deformed with different strain rates achieve steady state (Fig. 4c) at the similar strain of approximately 2% , indicating that the viscosity of SCHOTT N-BK7[®] does not significantly depend on strain for this strain level.

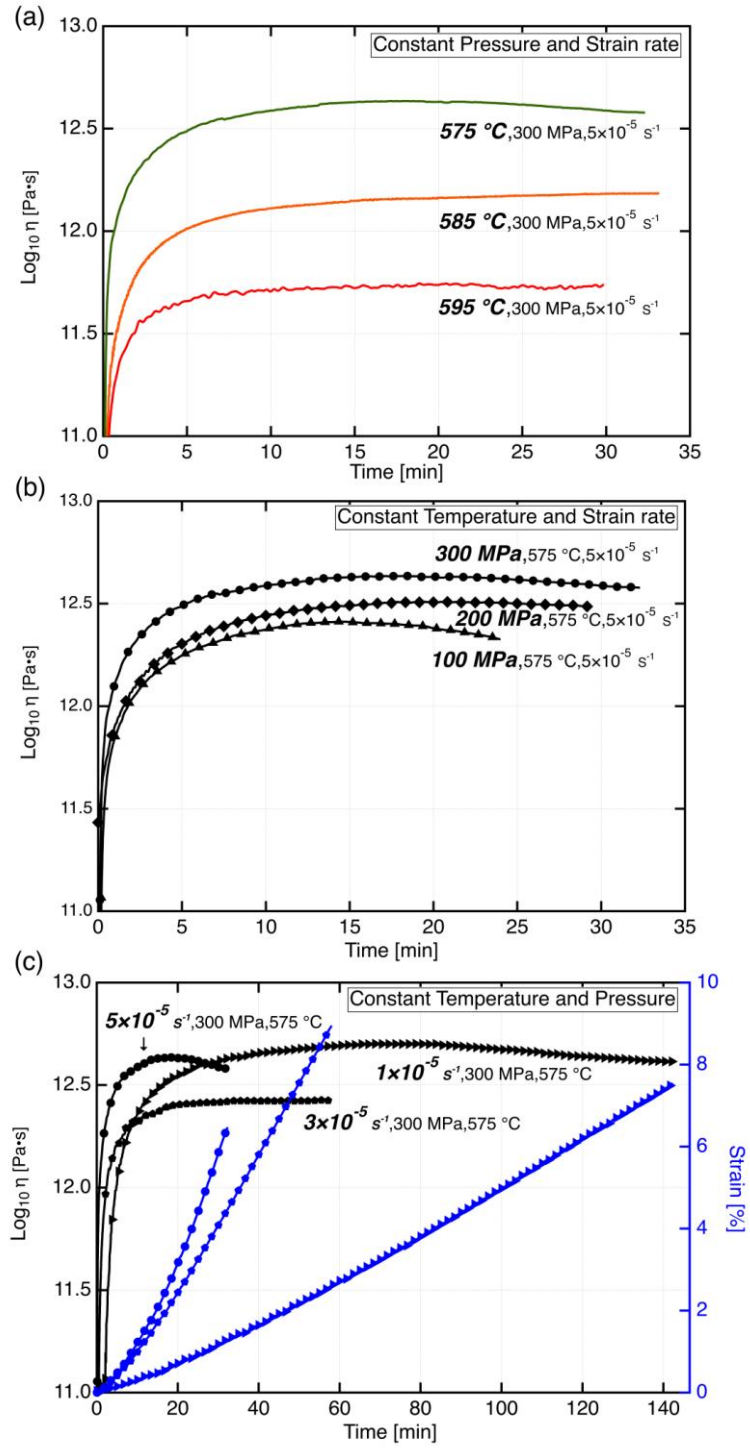


Fig. 4 Time dependence of viscosity (a) at a constant confining pressure and constant strain rate for increasing temperatures; (b) at a constant temperature and constant strain rate for increasing confining pressures; (c) at a constant temperature and constant confining pressure for increasing strain rates. The time dependence of strain is also shown in (c). For all curves, 1 data point out of every 50 points is shown for clarity.

Using an Arrhenius model to describe the temperature dependence of the steady-state viscosity obtained from the deformation experiments at 300 MPa from this study gives $\Delta H/R = 7.2 \times 10^4$ K (activation energy: $601 \pm 10 \cdot \text{kJ mol}^{-1}$, $R^2=0.99$) as illustrated in Fig. 5. The result is in good agreement with the activation energy of approximately $\Delta H/R = 7.4 \times 10^4$ K (activation energy: $615 \text{ kJ} \cdot \text{mol}^{-1}$) obtained experimentally at 1-atm.⁵⁹ However, the viscosities have a significant offset of approximately $+1.0 \log_{10}(\text{Pa} \cdot \text{s})$ compared to the results from the latest two-internal-parameter relaxation model.

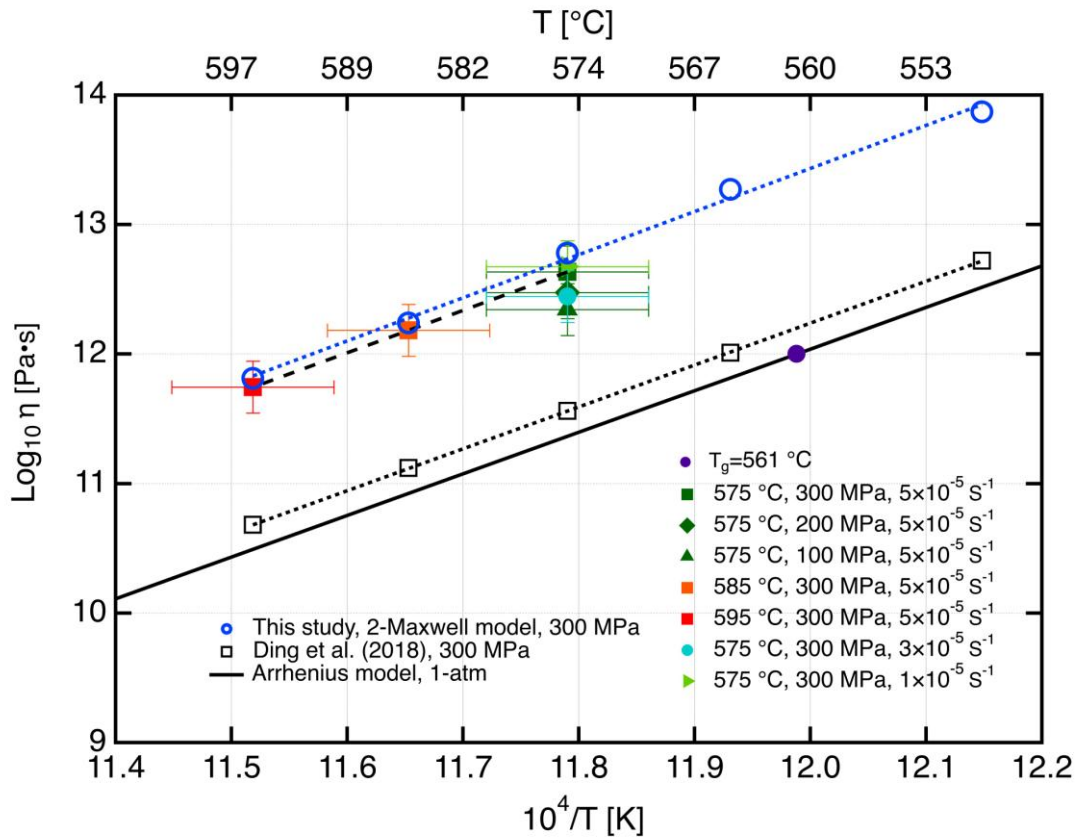


Fig. 5 Temperature dependence of the viscosity of SCHOTT N-BK7[®] at high pressure compared to an Arrhenius model at 1-atm, a 2-Maxwell model at 300 MPa and the latest two-internal-parameter relaxation model at 300 MPa (Ding et al., 2018).

The model developed by Ding et al.²⁸ can be transformed into a viscosity model

$$\eta = \eta_{ref} \exp \left\{ \frac{x}{T} \left[\frac{\Delta H}{R} + f_p \frac{\Delta V_a}{R} (P - P_{ref}) \right] + \frac{1-x}{T_f} \left[\frac{\Delta H}{R} + f_p \frac{\Delta V_a}{R} (P_f - P_{ref}) \right] - \frac{\Delta H}{RT_{ref}} \right\} \quad (18)$$

and gives a positive linear dependence of viscosity on the pressure of SCHOTT N-BK7[®], with a slope of $0.05 \log_{10}(\text{Pa}\cdot\text{s})/100 \text{ MPa}$. The pressure dependent viscosity data from this study, together with the viscosity predicted by the 2-Maxwell model and the latest two-internal-parameter relaxation model²⁸ are shown in Fig. 6. We recall that the mean stress used in Fig. 6 equals to $\sigma_{mean} = (\sigma_{load} + 2\sigma_{Ar}) / 3$ (see Eq. (2),⁵¹) and that the viscosity is calculated using Eq. (17). The overall viscosity change in this study is approximately $0.1 \log_{10}(\text{Pa}\cdot\text{s})/100 \text{ MPa}$, which is similar to the prediction from the 2-Maxwell model and the latest two-internal-parameter relaxation model. The absolute viscosities are still different from the most recent two-internal-parameter relaxation model of approximately $+1.0 \log_{10}(\text{Pa}\cdot\text{s})$ (same as the variable temperature experiments), even though the 2-Maxwell model can fit the data well with a negligible difference.

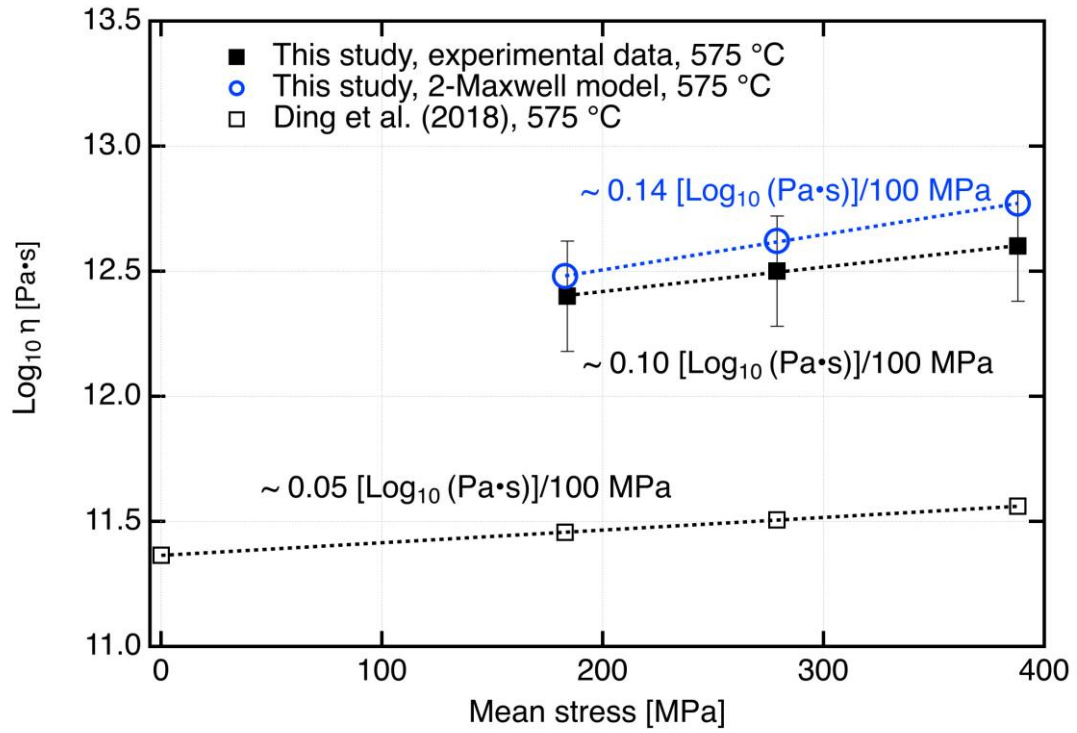


Fig. 6 Viscosity as a function of the mean stress of SCHOTT N-BK7[®] for the experimental data at 575 °C compared to the values calculated by using a 2-Maxwell model as well as the latest two-internal-parameter relaxation model (Ding et al., 2018).

4. Discussion

Since the viscosity increases with increasing pressure, SCHOTT N-BK7[®] glass behaves as a depolymerized glass. The pressure yields a positive effect on forming the 3D networks (oxygen atoms in TO₄ connect to adjacent tetrahedron) in SCHOTT N-BK7[®] glass.

The present *in situ* experiments confirm the previous overall temperature dependence results fitted by an Arrhenius equation. However, the viscosity dependence

on pressure is rather small and sensitive to uncertainties in temperature. Indeed, $\pm 5\text{ }^{\circ}\text{C}$ can yield an uncertainty as high as $\pm 0.22 \log_{10}(\text{Pa}\cdot\text{s})$ on the viscosity at 300 MPa.

Glass (i.e., non-crystalline materials) typically behaves like a Newtonian fluid⁶² under applied stress, yet non-Newtonian viscous flow has also been observed in soda-lime silicate glass⁶² at strain rates around 10^{-4} s^{-1} . Here, mechanical data as a function of strain rate indicate that the SCHOTT N-BK7[®] glass at 300 MPa and 575 $^{\circ}\text{C}$ might have a non-Newtonian behavior (Fig. 2c), which partly affects the overall fit of the 2-Maxwell model in Fig. 3b. During the industrial glass production, the process parameters are chosen to avoid fracture, that is, to be slow enough to remain perfectly Newtonian. Thus, the influence of a large strain rate range on SCHOTT N-BK7[®] viscosity will need further experiments to properly quantify. On the other hand, the non-linear viscosity change with increasing strain rates might also be due to the uncertainty in temperature, such as a local heterogeneous temperature distribution (e.g., radial gradient or the heat distribution difference between the deformation assembly containing the glass cylinder and the furnace calibration assembly containing an alumina cylinder).

For the large absolute viscosity discrepancy between experimental data and the latest two-internal-parameter relaxation model (based on static high pressure and volume recovery measurement), we do not have an unambiguous explanation. It may be due to the following aspects: (i) the deformation apparatus does not permit experiments

at 1-atm and high temperature and thus the current data set cannot be confirmed by experimental data at 1-atm and 575 °C. (ii) The temperature calibration was done by using a hollow alumina cylinder instead of the SCHOTT N-BK7[®] glass cylinder, which may have affected the temperature distribution. We have tried to calibrate the furnace using a specially designed hollow SCHOTT N-BK7[®] glass cylinder, but at high temperature and pressure the hole for the thermocouple (which is at room pressure) shrunk as a result of viscous flow under high confining pressure, preventing any successful temperature calibration with a glass specimen. The different thermal conductivity between the SCHOTT N-BK7[®] glass hollow cylinder and the alumina hollow cylinder could have caused a slight change in temperature distribution. (iii) the surface tension⁶³ and friction⁶⁴ between the glass sample and the copper jacket were not taken into account during the stress determination; or (iv) some other fundamental process is missing in the two-internal parameter relaxation model.

5. Conclusions

Deformation experiments in uniaxial compression on SCHOTT N-BK7[®] glass were performed at temperatures near the glass transition temperature (561 °C) and at confining pressures of 100 to 300 MPa. The main results of this study are:

- (a) The viscosity of SCHOTT N-BK7[®] glass increases linearly with increasing pressure at $\sim 0.1 \log_{10}(\text{Pa}\cdot\text{s})/100 \text{ MPa}$ in the range of confining pressure investigated.
- (b) The pressure dependence of viscosity measured in this study ($\sim 0.1 \log_{10}(\text{Pa}\cdot\text{s})/100 \text{ MPa}$) is consistent with the latest two-internal-parameter relaxation model.
- (c) At the same temperature and the same pressure, the viscosity measured in this study is approximately $+1.0 \log_{10}(\text{Pa}\cdot\text{s})$ higher than in Ding et al. (2018).²⁸ The reason for this discrepancy has not been identified clearly.
- (d) The mechanical data can be overall fitted by a Maxwell viscoelastic model with two parallel elements.

Acknowledgments

S.D. thanks D. Mainprice and M.A. Bouhifd for informative discussions during this study. The authors thank the technicians and engineers at the SCHOTT machine-shop for the sample preparation. This project has received funding from the European Union's Horizon 2020 research and innovation program under the Marie Skłodowska-Curie grant agreement N° 642029.

References

1. Peter K. Densification and flow phenomena of glass in indentation experiments. *J Non-Cryst Solids*. 1970;5(2):103-115.
2. Shang HX, Rouxel T. Creep behavior of soda-lime glass in the 100-500 K temperature range by indentation creep test. *J Am Ceram Soc*. 2005;88(9):2625-2628.
3. Wilantewicz TE, Varner JR. Vickers indentation behavior of several commercial glasses at high temperatures. *J Mater Sci*. 2008;43(1):281-298.
4. Dick E. New experiments on the microplasticity of glass. *Glastech Ber*. 1970;43(1):16-21.
5. An QL, Ming WW, Chen M. Experimental investigation on cutting characteristics in nanometric plunge-cutting of BK7 and fused silica glasses. *Materials*. 2015;8(4):1428-1441.

6. Hagan J, Swain MV. The origin of median and lateral cracks around plastic indents in brittle materials. *J Phys D: Appl Phys.* 1978;11(15):2091.
7. Lawn BR, Dabbs TP, Fairbanks CJ. Kinetics of shear-activated indentation crack initiation in soda-lime glass. *J Mater Sci.* 1983;18(9):2785-2797.
8. Lee EH, Radok JRM. The contact problem for viscoelastic bodies. *J Appl Mech.* 1960;27(3):438-444.
9. Alkorta J, Martinez-Esnaola JM, Sevillano JG. Absence of one-to-one correspondence between elastoplastic properties and sharp-indentation load-penetration data. *J Mater Res.* 2005;20(5):1369-1369.
10. Rouxel T, Sangleboeuf JC. The brittle to ductile transition in a soda-lime-silica glass. *J Non-Cryst Solids.* 2000;271(3):224-235.
11. Fulcher GS. Analysis of recent measurements of the viscosity of glasses. *J Am Ceram Soc.* 1925;8(6):339-355.
12. Williams ML, Landel RF, Ferry JD. The temperature dependence of relaxation mechanisms in amorphous polymers and other glass-forming liquids. *J Am Chem Soc.* 1955;77(14):3701-3707.
13. Cohen MH, Turnbull D. Molecular transport in liquids and glasses. *J Chem Phys.* 1959;31(5):1164-1169.
14. Greet RJ, Turnbull D. Test of adam-gibbs liquid viscosity model with O-Terphenyl specific-heat data. *J Chem Phys.* 1967;47(6):2185-2190.

15. Turnbull D, Cohen MH. On the free - volume model of the liquid - glass transition. *J Chem Phys.* 1970;52(6):3038-3041.
16. Adam G, Gibbs JH. On the temperature dependence of cooperative relaxation properties in glass-forming liquids. *J Chem Phys.* 1965;43(1):139-146.
17. Mauro JC, Yue YZ, Ellison AJ, Gupta PK, Allan DC. Viscosity of glass-forming liquids. *P Natl Acad Sci USA.* 2009;106(47):19780-19784.
18. Mysen BO, Virgo D, Seifert FA. The structure of silicate melts: Implications for chemical and physical properties of natural magma. *Rev Geophys.* 1982;20(3):353-383.
19. Wang Y, Sakamaki T, Skinner LB, Jing Z, Yu T, Kono Y, et al. Atomistic insight into viscosity and density of silicate melts under pressure. *Nat Commun.* 2014;5:3241.
20. Kushiro I. Changes in viscosity and structure of melt of NaAlSi₂O₆ composition at high-pressures. *J Geophys Res.* 1976;81(35):6347-6350.
21. Kushiro I. Viscosity and structural-changes of albite (NaAlSi₃O₈) melt at high-pressures. *Earth Planet Sc Lett.* 1978;41(1):87-90.
22. Scarfe CM, Mysen BO, Virgo D. Pressure dependence of the viscosity of silicate melts. *Magmatic processes: Physicochemical principles.* 1987;1:59-67.
23. Limbach R, Winterstein-Beckmann A, Dellith J, Möncke D, Wondraczek L. Plasticity, crack initiation and defect resistance in alkali-borosilicate glasses: From normal to anomalous behavior. *J Non-Cryst Solids.* 2015;417:15-27.

24. Jantzen CM. Using polymerization, glass structure, and quasicrystalline theory to produce high level radioactive borosilicate glass remotely: A 20+ year legacy. *Journal of the South Carolina Academy of Science*. 2017;15(1):4.
25. Sperry L, JD M. Pressure dependence of viscosity of B_2O_3 . *Phys Chem Glasses*. 1968;9(3):91-95.
26. Schulze F, Behrens H, Hurkuck W. Determination of the influence of pressure and dissolved water on the viscosity of highly viscous melts: Application of a new parallel-plate viscometer. *Am Mineral*. 1999;84(10):1512-1520.
27. Del Gaudio P, Behrens H, Deubener J. Viscosity and glass transition temperature of hydrous float glass. *J Non-Cryst Solids*. 2007;353(3):223-236.
28. Ding L, Buhre S, Kunisch C, Kaus B. Pressure dependence of density and structural relaxation of glass near the glass transition region. *J Am Ceram Soc*. 2018;101(3):1149-1158.
29. Tribone JJ, Oreilly JM, Greener J. Pressure-jump volume-relaxation studies of polystyrene in the glass-transition region. *J Polym Sci Pol Phys*. 1989;27(4):837-857.
30. Hodge IM. Enthalpy relaxation and recovery in amorphous materials. *J Non-Cryst Solids*. 1994;169(3):211-266.
31. Simon SL, Park JY, McKenna GB. Enthalpy recovery of a glass-forming liquid constrained in a nanoporous matrix: Negative pressure effects. *Eur Phys J E*. 2002;8(2):209-216.

32. Grassia L, Simon SL. Modeling volume relaxation of amorphous polymers: Modification of the equation for the relaxation time in the kahr model. *Polymer*. 2012;53(16):3613-3620.
33. Gupta PK. Fictive pressure effects in structural relaxation. *J Non-Cryst Solids*. 1988;102(1-3):231-239.
34. Tool AQ. Relation between inelastic deformability and thermal expansion of glass in its annealing range. *J Am Ceram Soc*. 1946;29(9):240-253.
35. Dingwell DB, Webb SL. Structural relaxation in silicate melts and non-newtonian melt rheology in geologic processes. *Phys Chem Miner*. 1989;16(5):508-516.
36. Avramov I. Pressure dependence of viscosity of glassforming melts. *J Non-Cryst Solids*. 2000;262(1-3):258-263.
37. Gupta PK. Negative-pressure dependence of viscosity. *J Am Ceram Soc*. 1987;70(7):C152-C153.
38. Mosaddegh P, Ziegert JC. Friction measurement in precision glass molding: An experimental study. *J Non-Cryst Solids*. 2011;357(16-17):3221-3225.
39. Dyer PE, Maswadi SM, Walton CD, Ersoz M, Fletcher PDI, Paunov VN. 157-nm laser micromachining of N-BK7 glass and replication for microcontact printing. *Appl Phys a-Mater*. 2003;77(3-4):391-394.

40. Koontz E, Blouin V, Wachtel P, Musgraves JD, Richardson K. Prony series spectra of structural relaxation in N-BK7 for finite element modeling. *J Phys Chem A*. 2012;116(50):12198-12205.
41. Paterson M. Rock deformation experimentation. *Geophys Monogr*. 1990:187-194.
42. Carroll MR, Stolper EM. Argon solubility and diffusion in silica glass - implications for the solution behavior of molecular gases. *Geochim Cosmochim Ac*. 1991;55(1):211-225.
43. Karato SI, Paterson MS, Fitz Gerald JD. Rheology of synthetic olivine aggregates - influence of grain-size and water. *J Geophys Res-Solid*. 1986;91(B8):8151-8176.
44. Mei S, Kohlstedt DL. Influence of water on plastic deformation of olivine aggregates 1. Diffusion creep regime. *J Geophys Res-Sol Ea*. 2000;105(B9):21457-21469.
45. Mei S, Kohlstedt DL. Influence of water on plastic deformation of olivine aggregates 2. Dislocation creep regime. *J Geophys Res-Sol Ea*. 2000;105(B9):21471-21481.
46. Demouchy S, Schneider SE, Mackwell SJ, Zimmerman ME, Kohlstedt DL. Experimental deformation of olivine single crystals at lithospheric temperatures. *Geophys Res Lett*. 2009;36:L04304.

47. Demouchy S, Tommasi A, Ballaran TB, Cordier P. Low strength of earth's uppermost mantle inferred from tri-axial deformation experiments on dry olivine crystals. *Phys Earth Planet In.* 2013;220:37-49.
48. Paterson MS. A high-pressure, high-temperature apparatus for rock deformation. *Int J Rock Mech Min.* 1970;7(5):517-526.
49. Frost HJ, Ashby MF. Deformation mechanism maps: The plasticity and creep of metals and ceramics. Oxford: Pergamon press; 1982.
50. Demouchy S, Mussi A, Barou F, Tommasi A, Cordier P. Viscoplasticity of polycrystalline olivine experimentally deformed at high pressure and 900 degrees C. *Tectonophysics.* 2014;623:123-135.
51. Paterson MS, Wong T-f. Experimental rock deformation-the brittle field. Berlin Heidelberg: Springer Science & Business Media; 2005.
52. Kaus BJP, Becker TW. Effects of elasticity on the rayleigh-taylor instability: Implications for large-scale geodynamics. *Geophys J Int.* 2007;168(2):843-862.
53. Jin HJ, Gu XJ, Wen P, Wang LB, Lu K. Pressure effect on the structural relaxation and glass transition in metallic glasses. *Acta Mater.* 2003;51(20):6219-6231.
54. Narayanaswamy OS. A model of structural relaxation in glass. *J Am Ceram Soc.* 1971;54(10):491-498.
55. Scherer GW. Theories of relaxation. *J Non-Cryst Solids.* 1990;123(1-3):75-89.

56. Webb SL, Dingwell DB. Non-newtonian rheology of igneous melts at high stresses and strain rates - experimental results for rhyolite, andesite, basalt, and nephelinite. *J Geophys Res-Solid*. 1990;95(B10):15695-15701.
57. Zheng QJ, Mauro JC. Viscosity of glass-forming systems. *J Am Ceram Soc*. 2017;100(1):6-25.
58. Lagarias JC, Reeds JA, Wright MH, Wright PE. Convergence properties of the nelder-mead simplex method in low dimensions. *Siam J Optimiz*. 1998;9(1):112-147.
59. Jain A, Yi AY, Xie XP, Sooryakumar R. Finite element modelling of stress relaxation in glass lens moulding using measured, temperature-dependent elastic modulus and viscosity data of glass. *Model Simul Mater Sc*. 2006;14(3):465-477.
60. Scherer GW, Rekhson SM. Viscoelastic - elastic composites: I, general theory. *J Am Ceram Soc*. 1982;65(7):352-360.
61. Rouxel T, Besson J-L, Gault C, Goursat P, Leigh M, Hampshire S. Viscosity and young's modulus of an oxynitride glass. *J Mater Sci Lett*. 1989;8(10):1158-1160.
62. Simmons JH, Mohr RK, Montrose CJ. Non-newtonian viscous-flow in glass. *J Appl Phys*. 1982;53(6):4075-4080.
63. Parikh NM. Effect of atmosphere on surface tension of glass. *J Am Ceram Soc*. 1958;41(1):18-22.
64. Liu T. Sliding friction of copper. *Wear*. 1964;7(2):163-174.