



## Impact of the driving pressure on mortality in obese and non-obese ARDS patients: a retrospective study of 362 cases

Audrey de Jong, Jeanne Cossic, Daniel Verzilli, Clément Monet, Julie Carr, Mathieu Conseil, Marion Monnin, Moussa Fafa Cisse, Fouad Belafia, Nicolas Molinari, et al.

### ► To cite this version:

Audrey de Jong, Jeanne Cossic, Daniel Verzilli, Clément Monet, Julie Carr, et al.. Impact of the driving pressure on mortality in obese and non-obese ARDS patients: a retrospective study of 362 cases. *Intensive Care Medicine*, 2018, pp.1106-1114. 10.1007/s00134-018-5241-6 . hal-01819466

**HAL Id: hal-01819466**

**<https://hal.umontpellier.fr/hal-01819466>**

Submitted on 9 Jan 2020

**HAL** is a multi-disciplinary open access archive for the deposit and dissemination of scientific research documents, whether they are published or not. The documents may come from teaching and research institutions in France or abroad, or from public or private research centers.

L'archive ouverte pluridisciplinaire **HAL**, est destinée au dépôt et à la diffusion de documents scientifiques de niveau recherche, publiés ou non, émanant des établissements d'enseignement et de recherche français ou étrangers, des laboratoires publics ou privés.

# Impact of the driving pressure on mortality in obese and non-obese ARDS patients: a retrospective study of 362 cases

Audrey De Jong<sup>1</sup>, Jeanne Cossic<sup>2</sup>, Daniel Verzilli<sup>2</sup>, Clément Monet<sup>2</sup>, Julie Carr<sup>2</sup>, Mathieu Conseil<sup>2</sup>, Marion Monnin<sup>2</sup>, Moussa Cisse<sup>2</sup>, Fouad Belafia<sup>2</sup>, Nicolas Molinari<sup>3</sup>, Gérald Chanques<sup>1</sup> and Samir Jaber<sup>1\*</sup>

## Abstract

**Purpose:** The relation between driving pressure (plateau pressure-positive end-expiratory pressure) and mortality has never been studied in obese ARDS patients. The main objective of this study was to evaluate the relationship between 90-day mortality and driving pressure in an ARDS population ventilated in the intensive care unit (ICU) according to obesity status.

**Methods:** We conducted a retrospective single-center study of prospectively collected data of all ARDS patients admitted consecutively to a mixed medical-surgical adult ICU from January 2009 to May 2017. Plateau pressure, compliance of the respiratory system (Cr<sub>s</sub>) and driving pressure of the respiratory system within 24 h of ARDS diagnosis were compared between survivors and non-survivors at day 90 and between obese (body mass index  $\geq 30$  kg/m<sup>2</sup>) and non-obese patients. Cox proportional hazard modeling was used for mortality at day 90.

**Results:** Three hundred sixty-two ARDS patients were included, 262 (72%) non-obese and 100 (28%) obese patients. Mortality rate at day 90 was respectively 47% (95% CI, 40–53) in the non-obese and 46% (95% CI, 36–56) in the obese patients. Driving pressure at day 1 in the non-obese patients was significantly lower in survivors at day 90 ( $11.9 \pm 4.2$  cmH<sub>2</sub>O) than in non-survivors ( $15.2 \pm 5.2$  cmH<sub>2</sub>O,  $p < 0.001$ ). Contrarily, in obese patients, driving pressure at day 1 was not significantly different between survivors ( $13.7 \pm 4.5$  cmH<sub>2</sub>O) and non-survivors ( $13.2 \pm 5.1$  cmH<sub>2</sub>O,  $p = 0.41$ ) at day 90. After three multivariate Cox analyses, plateau pressure [HR = 1.04 (95% CI 1.01–1.07) for each point of increase], Cr<sub>s</sub> [HR = 0.97 (95% CI 0.96–0.99) for each point of increase] and driving pressure [HR = 1.07 (95% CI 1.04–1.10) for each point of increase], respectively, were independently associated with 90-day mortality in non-obese patients, but not in obese patients.

**Conclusions:** Contrary to non-obese ARDS patients, driving pressure was not associated with mortality in obese ARDS patients.

**Keywords:** Intensive care unit, Critical care, Obesity, Obese, Acute respiratory distress syndrome, Driving pressure

## Introduction

Obesity has become a worldwide health concern. The prevalence of obese adults worldwide has risen significantly over 25 years [1]. Admissions to intensive care units (ICUs) for complications of bariatric surgery or other surgical or medical reasons are becoming increasingly frequent in obese patients [2]. Obese patients

\*Correspondence: s-jaber@chu-montpellier.fr

<sup>1</sup> Anesthesiology and Intensive Care; Anesthesia and Critical Care Department B, Saint Eloi Teaching Hospital, PhyMedExp, University of Montpellier, INSERM U1046, CNRS, UMR 9214, 80 Avenue Augustin Fliche, 34295 Montpellier Cedex 5, France  
Full author information is available at the end of the article

Audrey De Jong and Jeanne Cossic have contributed equally from this work.

represent a specific population in the ICU, particularly regarding respiratory care [3–5]. The acute respiratory distress syndrome (ARDS) incidence is increased in obese patients [6, 7]. Response to specific treatments such as prone positioning [8] or noninvasive ventilation (NIV) preoxygenation is improved in this population [9–12]. The prognosis of ARDS is controversial, but overall it seems that obese ARDS patients have a lower mortality risk than non-obese patients [7, 8, 13]. The pathophysiology of respiratory system management in obese patients differs from that of the non-obese patient. The negative effects of thoracic wall weight and abdominal fat mass on pulmonary compliance, leading to decreased functional residual capacity and arterial oxygenation, are exacerbated by a supine position and further worsened after general anesthesia and mechanical ventilation.

One of the main targets of respiratory critical care management of the obese patient is the successful management of the respiratory system. Some studies have suggested that higher driving pressure [driving pressure = plateau pressure (Pplat) – positive end expiratory pressure (PEEP)] was associated with higher mortality in ARDS [14], with conflicting results [14–19].

However, no distinction was made between non-obese and obese patients in the different studies assessing the relationship between driving pressure and mortality. Patients were included without focusing on specific populations. Notably, the respiratory system includes the lung and chest wall, and the plateau pressure is related to both transalveolar pressure (“lung”) and transthoracic pressure (“chest”). Chest compliance may be decreased in the obese compared with non-obese patient, being associated with an increase of transthoracic pressure [20]. Given the epidemiologic and pathophysiologic changes observed in this specific population of obese patients, one could hypothesize that the results found in non-obese patients cannot be extrapolated to obese patients without dedicated studies and that the obesity status could be a confounding factor in the relationship between driving pressure and mortality in overall ARDS patients. To our knowledge, no study has specifically evaluated the relationship between mortality and driving pressure in obese ARDS patients.

The main objective of this study was to determine the influence of the obesity status on the relationship between 90-day mortality and driving pressure in a population with ARDS ventilated in the ICU. The secondary objectives were to determine the influence of the obesity status on the relationship between 90-day mortality and plateau pressure and compliance of the respiratory system (Cr<sub>s</sub>). Our hypotheses were that, contrary to

Unlike non-obese-ARDS patients, driving pressure was not associated with mortality in obese-ARDS patients. This study suggests that a pre-defined similar ventilator settings for both obese and non-obese patients may not fit all, since positive end-expiratory pressure requirements and resulting driving pressure of respiratory system might vary widely among patients because of individual anatomy and physiology.

non-obese patients, mortality was not associated with higher driving pressure, higher plateau pressure, or lower Cr<sub>s</sub> in obese ARDS patients.

## Materials and methods

### Study design

We conducted a retrospective analysis of prospectively collected data of all ARDS patients consecutively admitted to a 16-bed mixed medical-surgical adult ICU in a university teaching hospital between January 2008 and May 2017. We obtained approval from the local scientific and ethics committee of the “Comité d’Organisation et de Gestion de l’Anesthésie Réanimation” (COGAR) of the Montpellier University Hospital, who stated that no informed consent of the patient or next of kin was required.

### Data collection

Patient body weight and height were measured at the time of ICU admission. In accordance with international standards [21], patients with a body mass index (BMI)  $\geq 30$  kg/m<sup>2</sup> were defined as obese. All consecutive obese patients hospitalized during the study period in a medical-surgical ICU were included in the study. Additional information on the data collection is available in the electronic supplement content.

### Inclusion criteria

All consecutive ARDS patients were included. ARDS was identified based on the Berlin criteria consensus definition [22]: (1) timing: onset within 1 week of a known clinical insult or new or worsening respiratory symptoms; (2) chest imaging: bilateral opacities, not fully explained by effusions, lobar/lung collapse or nodules; (3) origin of edema: respiratory failure not fully explained by cardiac failure or fluid overload. ARDS diagnosis was retrospectively reviewed by two physicians, JC and ADJ. All included patients were ventilated with a lung-protective mechanical ventilation protocol as defined in the literature: low tidal volume 6 ml/kg, limited plateau pressure and PEEP. Ventilatory parameters were set to avoid intrinsic PEEP.

End points

ICU and hospital mortality rates were obtained using hospital electronic patient records. The primary end point was the mortality rate at 90 days (all-cause mortality). The secondary end points were the ICU mortality rate, ICU and hospital length of stay, duration of invasive mechanical ventilation, use of post-extubation noninvasive ventilation, prone positioning rate, pneumothorax occurrence and presence of ventilator-associated pneumonia.

Statistical analysis

First, a descriptive analysis was performed overall in non-obese and obese patients. Driving pressure, plateau pressure and Crs were also described according to the World Health Organization (WHO) classification of obesity. Then, a univariate analysis was done according to survival at day 90 in non-obese and obese patients. Quantitative variables were expressed as mean [standard deviation (SD)] or median (interquartile range, 25–75%) and compared using the Student *t* test or Wilcoxon test as appropriate (Gaussian or non-Gaussian variables). Qualitative variables were expressed as numbers (%) and compared using the chi-square test or Fisher test as appropriate. In case of missing values, the number of missing values was clearly stated for each variable, and no replacement method was used. In case of missing values, a sensitivity analysis was done using the best-worst case analysis (results are presented in the supplemental content), and in case of similar results, a complete case analysis was performed [assuming missing data as missing completely at random (MCAR), listwise deletion].

Second, receiver-operating characteristic (ROC) curve analysis was performed to assess the ability of the driving pressure, plateau pressure and Crs to predict mortality in the obese and non-obese groups. The best threshold was determined using the Youden index [23]. Then, Kaplan-Meier analysis was performed to determine the survival lifetimes for 90-day survival, and a log-rank test was used to compare the two curves of driving pressure, plateau pressure and Crs according to the best threshold found for each variable. The hazard ratio (HR) of mortality at day 90 was obtained by the Cox method.

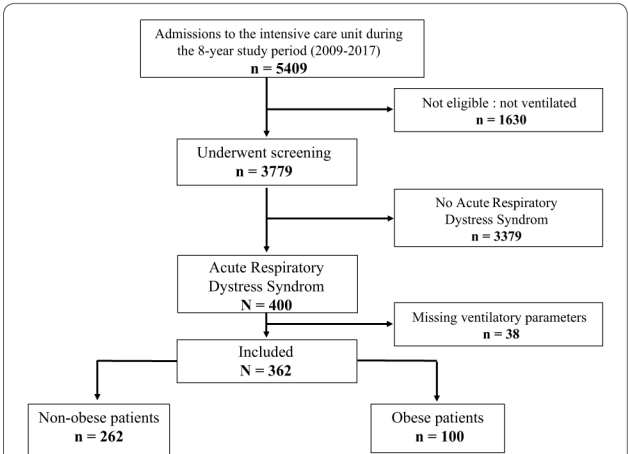
Third, multivariate Cox regression was performed to assess the relationship among driving pressure (forced variable), obesity status (forced variable) and mortality at day 90 in the overall population. Interactions between variables were tested. Age, SAPS II, SOFA score, comorbidities and ARDS characteristics were a priori planned to be entered in the model, and a stepwise procedure (with a threshold of *p* < 0.05 to stay in the final model) was used to select the final model. HRs were provided for each variable included in the final model or the driving pressure according to the obesity status in case of significant interaction between the two variables. As driving pressure, plateau

pressure and Crs are mathematically coupled and collinear within them, we used a specific Cox model for each variable, driving pressure (model 1), plateau pressure (model 2) and Crs (model 3) [15]. The effect of an inclusion period was assessed and not retained in the final model because it was not significant (data not shown). Then, the same analyses were separately performed in obese and non-obese patients. Statistical significance was considered at *p* < 0.05; *p* values were two-tailed. The statistical analysis was performed by the Medical Statistical Department of the Montpellier University Hospital with the help of statistical software (SAS, version 9.4; SAS Institute; Cary, NC).

Results

Of the 5409 patients admitted to the ICU during the study period, 400 with ARDS were identified. Figure 1 presents the flow chart of the study. Complete ventilatory data were available in 362 patients who were included, 262 (72%) non-obese patients and 100 (28%) obese patients. One hundred twelve patients (28%) were already included in randomized studies: 7 in the PROSEVA [24], 42 in the BIRDS [25] and 49 in the LIVE study [26]. The main demographic characteristics of the included non-obese and obese patients are detailed in Table 1 (see supplementary Table 1 for characteristics of overall ARDS non-obese and obese patients and supplementary Table 2 for the analysis according to the WHO classification). The ventilatory characteristics of non-obese and obese included patients are shown in Table 2.

In non-obese patients, the mortality rates in the ICU and at day 90 were 44% (95% CI 38–50) and 47% (95% CI 40–53), respectively. Driving pressure at day 1 in the non-obese patients was significantly lower in survivors at day 90 ( $12 \pm 4$  cmH<sub>2</sub>O) than in non-survivors ( $15 \pm 5$



**Fig. 1** Flow chart of the study. Of the 5409 patients admitted to the ICU during the study period, 362 with mild-to-severe ARDS were included, 262 (72%) non-obese and 100 (28%) obese



**Table 1** Patients' characteristics in non-obese and obese patients

Patients characteristics	Overall (n = 362)		Non obese (n = 262)		p	Obese (n = 100)		p value
	Non obese (n = 262)	Obese (n = 100)	Survivors (n = 140)	Non-survivors (n = 122)		Survivors (n = 54)	Non-survivors (n = 46)	
Age, years	61 ± 16	60 ± 11	59 ± 16	62 ± 16	0.018	58 ± 12	63 ± 10	0.048
Male gender	173 (66)	71 (71)	92 (66)	81 (66)	0.908	35 (64)	40 (80)	0.064
BMI, kg/m <sup>2</sup>	24 ± 3	36 ± 7	23 ± 3	24 ± 3	0.210	37 ± 8	35 ± 6	0.470
Admission SAPS II score	54 ± 17	51 ± 19	48 ± 14	60 ± 18	<0.001	44 ± 16	60 ± 18	<0.001
Admission SOFA score	10 ± 5	10 ± 5	8 ± 4	12 ± 5	<0.001	9 ± 4	13 ± 5	<0.001
Current smoker	94 (36)	38 (38)	56 (40)	38 (31)	0.136	25 (46)	13 (28)	0.064
Chronic alcoholism	81 (31)	32 (32)	50 (36)	31 (25)	0.114	13 (24)	19 (41)	0.066
Systemic arterial hypertension	78 (30)	56 (56)	37 (26)	41 (34)	0.205	29 (54)	27 (59)	0.616
Coronary artery disease	24 (9)	10 (10)	8 (6)	16 (13)	0.038	4 (7)	6 (13)	0.349
Respiratory disease	38 (15)	13 (13)	18 (13)	20 (16)	0.417	8 (15)	5 (11)	0.559
Diabetes mellitus	32 (12)	33 (33)	17 (12)	15 (12)	0.970	14 (26)	19 (41)	0.103
Chronic renal disease	24 (9)	7 (7)	11 (8)	13 (11)	0.433	2 (4)	5 (11)	0.243
Cirrhosis	58 (22)	23 (23)	27 (19)	31 (25)	0.234	8 (15)	15 (33)	0.035
Origin of ARDS								
Primary	123 (47)	39 (39)	70 (50)	53 (43)	0.289	21 (39)	18 (39)	0.980
Secondary	139 (53)	61 (61)	70 (50)	69 (57)	0.289	33 (61)	27 (59)	0.806
ARDS severity								
Mild	22 (8)	6 (6)	11 (8)	11 (9)	0.740	3 (6)	3 (7)	1.000
Moderate	117 (45)	49 (49)	70 (50)	47 (39)	0.080	26 (48)	23 (51)	0.769
Severe	123 (47)	45 (45)	59 (42)	64 (53)	0.072	25 (46)	20 (44)	0.854

Values given as mean ± SD or number (%)

BMI body mass index, SAPS simplified acute physiology score, SOFA sepsis-related organ failure assessment, ARDS acute respiratory distress syndrome

cmH<sub>2</sub>O,  $p < 0.001$ , Fig. 2). Plateau pressure was also lower in survivors at day 90 ( $22 \pm 6$  cmH<sub>2</sub>O) than in non-survivors ( $24 \pm 6$  cmH<sub>2</sub>O,  $p = 0.002$ , Table 2), whereas Crs was higher in survivors ( $37 \pm 19$  ml/cmH<sub>2</sub>O) than in non-survivors ( $29 \pm 11$  ml/cmH<sub>2</sub>O,  $p < 0.001$ , Table 2).

In obese patients, the mortality rates in the ICU and at day 90 were 41% (95% CI 31–51) and 46% (95% CI 36–56), respectively. At day 90, the driving pressure at day 1 did not differ between survivors ( $14 \pm 5$  cmH<sub>2</sub>O) and non-survivors ( $13 \pm 4$  cmH<sub>2</sub>O,  $p = 0.408$ , Fig. 2). At day 90, the plateau pressure and Crs did not differ between survivors at day 90 ( $25 \pm 5$  cmH<sub>2</sub>O and  $34 \pm 17$  ml/cmH<sub>2</sub>O, respectively) and non-survivors ( $23 \pm 5$  cmH<sub>2</sub>O,  $p = 0.258$ , and  $35 \pm 16$  ml/cmH<sub>2</sub>O,  $p = 0.373$ , respectively, Table 2).

Main and secondary outcomes including non-obese and obese patients according to the vital status at day 90 are summarized in Supplementary Table 3. The prognosis of obese and non-obese patients was not different. The prone position and neuromuscular blockers used

for each class of obesity are detailed in Supplementary Table 4. In class II and III obesity, use of neuromuscular blockers and prone position was significantly more frequent than in non-obese patients ( $p < 0.05$ ).

**Kaplan-Meier analysis**

Additional data about Kaplan-Meier analysis are available in the electronic supplementary content (results section, supplementary Fig. 1).

**Multivariate Cox analysis**

After multivariate analysis, there was a significant interaction among driving pressure, plateau pressure, Crs and obesity (Table 3). In non-obese patients, driving pressure [HR = 1.07 (95% CI 1.04–1.10, Table 3a) for each point of increase of driving pressure], plateau pressure [HR = 1.04 (95% CI 1.01–1.07, Table 3b) for each point of increase of plateau pressure] and Crs [HR = 0.97 (95% CI 0.96–0.99, Table 3c) for each point of increase of Crs] were

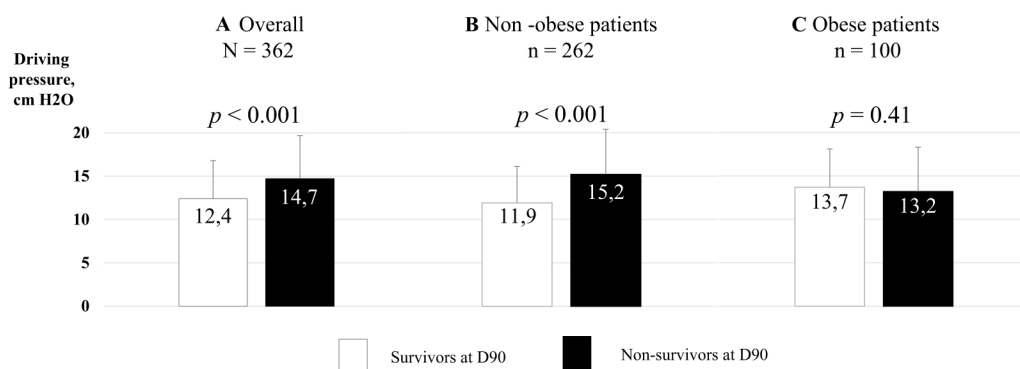
**Table 2 Ventilatory parameters in non-obese and obese patients, according to the vital status at day 90**

Variables	Overall (n = 362)		Non-obese (n = 262)		p	Obese (n = 100)		p value
	Non-obese (n = 262)	Obese (n = 100)	Survivors (n = 140)	Non-survivors (n = 122)		Survivors (n = 54)	Non-survivors (n = 46)	
Biologic parameters								
Arterial pH on day 1	7.31 ± 0.1	7.35 ± 0.1	7.35 ± 0.1	7.28 ± 0.18	< 0.001	7.34 ± 0.1	7.29 ± 0.18	0.025
PaCO <sub>2</sub> on day 1, mmHg	43 ± 6	45 ± 11	44 ± 11	43 ± 12	0.495	46 ± 12	43 ± 8	0.413
PaO <sub>2</sub> on day 1, mmHg	87 ± 36	85 ± 28	88 ± 37	84 ± 35	0.186	79 ± 16	93 ± 36	0.214
PaO <sub>2</sub> /FIO <sub>2</sub> ratio on day 1	123 ± 57	121 ± 52	124 ± 54	121 ± 62	0.314	114 ± 47	130 ± 57	0.137
Bicarbonate on day 1, g/mol	23 ± 6	23 ± 5	25 ± 5	21 ± 6	< 0.001	24 ± 5	21 ± 6	0.008
Lactate on day 1 mmol/l	4 ± 5	4 ± 5	2 ± 2	6 ± 6	< 0.001	2 ± 2	5 ± 6	0.003
Ventilation parameters								
Respiratory rate on day 1/min	24 ± 4	24 ± 4	22 ± 4	25 ± 6	0.027	24 ± 4	24 ± 5	0.580
Tidal volume on day 1, ml	431 ± 92	450 ± 79	427 ± 87	435 ± 99	0.378	447 ± 86	452 ± 71	0.362
Tidal volume on day 1, ml/PBW kg	7 ± 1	7 ± 1	7 ± 1	7 ± 1	0.442	7 ± 1	7 ± 1	0.821
PEEP on day 1, cmH <sub>2</sub> O	9 ± 3	10 ± 3	9 ± 3	8 ± 3	0.123	10 ± 3	9 ± 3	0.206
Peak pressure on day 1, cmH <sub>2</sub> O	35 ± 8	35 ± 6	35 ± 8	36 ± 8	0.914	37 ± 5	37 ± 7	0.173
Plateau pressure on day 1, cmH <sub>2</sub> O	23 ± 6	24 ± 5	22 ± 6	24 ± 6	0.002	25 ± 5	23 ± 5	0.258
Plateau pressure < 25 cmH <sub>2</sub> O	129 (49)	50 (50)	79 (56)	50 (41)	0.02	25 (46)	25 (54)	0.422
Crs on day 1, ml/cmH <sub>2</sub> O	33 ± 16	34 ± 16	37 ± 19	29 ± 11	< 0.001	34 ± 17	35 ± 16	0.373
Crs < 31 ml/cmH <sub>2</sub> O	136 (53)	46 (46)	60 (44)	76 (63)	0.002	28 (52)	18 (40)	0.239
Driving pressure on day 1, cmH <sub>2</sub> O	13 ± 5	13 ± 4	12 ± 4	15 ± 5	< 0.001	14 ± 5	13 ± 4	0.408
Driving pressure < 14 cmH <sub>2</sub> O	134 (51)	54 (54)	86 (69)	48 (39)	< 0.001	29 (54)	25 (54)	0.949
Mechanical power on day 1, J/min	22 ± 7	24 ± 6	21 ± 7	22 ± 7	0.309	24 ± 6	24 ± 6	0.977

Quantitative values are expressed as mean ± SD, and qualitative values are numbers (percentage of group). Compliance of the respiratory system (Crs) was calculated as the ratio of tidal volume to driving pressure. Driving pressure was calculated as the difference between plateau pressure and applied positive end-expiratory pressure (PEEP). Mechanical power was calculated as the product of driving pressure in Newton (cmH<sub>2</sub>O × 0.098), tidal volume and respiratory rate [36]. Day 1 was defined as the 24 h following the inclusion. The PaO<sub>2</sub>/FIO<sub>2</sub> ratio is the ratio of the partial pressure of arterial oxygen to the fraction of inspired oxygen; PaCO<sub>2</sub> is the partial pressure of arterial carbon dioxide; PBW is the predicted body weight

independently associated with day 90 mortality. In obese patients, driving pressure (Table 3a), plateau pressure (Table 3b) and Crs (Table 3c) were not independently associated with 90-day mortality.

Additional data on the multivariate Cox analysis performed separately in non-obese and obese patients are available in the electronic supplemental content (results section, supplementary Table 5).



**Fig. 2** Values of driving pressure according to 90-day mortality. Driving pressure was calculated as the difference between plateau pressure and applied PEEP at day 1. Driving pressures are given according to the vital status at day 90 in three groups: the overall population, non-obese group and obese group. Results among survivors at day 90 are shown in white boxes, and the results among non-survivors are shown in black boxes. Values are given as mean  $\pm$  SD. (1) The overall population. Driving pressure at day 1 in the non-obese patients was significantly lower in survivors at day 90 ( $12.4 \pm 4.4$  cmH<sub>2</sub>O) than in non-survivors ( $14.7 \pm 5.1$  cmH<sub>2</sub>O,  $p < 0.001$ ). (2) The non-obese patients. Driving pressure at day 1 in the non-obese patients was significantly lower in survivors at day 90 ( $11.9 \pm 4.2$  cmH<sub>2</sub>O) than in non-survivors ( $15.2 \pm 5.2$  cmH<sub>2</sub>O,  $p < 0.001$ ). (3) The obese patients. Driving pressure at day 1 in the obese patients was not significantly different in survivors at day 90 ( $13.7 \pm 4.5$  cmH<sub>2</sub>O) compared with non-survivors ( $13.2 \pm 5.1$  cmH<sub>2</sub>O,  $p = 0.41$ )

## Discussion

This is the first study to assess the relationship between driving pressure and mortality in the specific population of obese critically ill ARDS patients. The major finding is that unlike non-obese ARDS patients, driving pressure was not associated with mortality in obese ARDS patients. These results were confirmed after survival and multivariate Cox analysis, showing that driving pressure was not a predictive factor of mortality in obese patients, contrary to non-obese patients. Similar results were found for plateau pressure and Crs.

Recently, Amato et al. [14] suggested that driving pressure was associated with mortality in ARDS. Moreover, Guérin et al. [15] confirmed these results in 2016 in a retrospective analysis of the PROSEVA and ACURAYSIS trials. However, in a recent retrospective observational analysis [17] performed in non-ARDS patients, driving pressure was not associated with hospital mortality.

The values of driving pressure found in the non-obese patients in the current study are in accordance with recently published studies. Guerin et al. [15] found that driving pressure averaged  $13.7 \pm 3.7$  and  $12.8 \pm 3.7$  cmH<sub>2</sub>O ( $p = 0.002$ ) in non-survivors and survivors, respectively. Most recently, Bellani et al. [16] found that patients with a driving pressure  $> 14$  cmH<sub>2</sub>O at day 1 of the ARDS criteria had a higher mortality. This threshold of 14 cmH<sub>2</sub>O was the one found in non-obese patients in the present study, reinforcing the external validity of these results.

The main explanations of the differences observed between the non-obese and obese groups may be the following. First, in obese patients, much of the pressure that is applied by the ventilator will be used to distend the

chest wall rather than the lung. As such, the plateau pressure, which represents the pressure used to distend the chest wall plus lungs, may be high, but the pleural pressure will be too. Hence, there may not be an increase in transpulmonary pressure [27] with accompanying lung overdistension. Second, in relation to these physiologic changes, obese ARDS patients were found to be very different from non-obese ARDS patients in epidemiologic studies. Gong et al. [6] reported an association between increasing BMI and increasing development of ARDS. Higher BMI and obesity were associated with longer lengths of stay but not ARDS mortality after adjusting for baseline clinical factors [6]. Similarly to these results, Anzueto et al. [7] found that the obese patients were more likely to have significant complications during the course of ventilatory support including ARDS and acute renal failure, but there were no associations with increased duration of mechanical ventilation, length of stay or mortality. A recent study [28] confirmed these previous studies, showing that ICU mortality did not differ between obese and non-obese patients and that the medical category of admission was associated with worse prognosis than the surgical category of admission in obese ICU patients. One could hypothesize that ARDS in obese patients is a different entity than ARDS in non-obese patients. ARDS in obese patients may be less severe because of more atelectasis and less of the inflammatory process. The prone position was found to be associated with better outcomes in obese patients than in non-obese patients [8]. Better diaphragmatic function [29] in obese than in non-obese patients could also partly explain the specificities of ARDS in obese patients.

**Table 3 Results of multivariate Cox regression for the 90-day mortality prediction model**

Variable	B Parameter	HR (95% CI)	p value
Model 1 including driving pressure			
Driving pressure	0.069		< 0.0001
Obesity	1.048		0.0497
Driving pressure obesity	− 0.079		0.0354
Driving pressure in non-obese patients		1.07 (1.04–1.10)	
Driving pressure in obese patients		0.99 (0.93–1.06)	
SAPS II	0.025	1.03 (1.02–1.04)	0.0003
SOFA at admission	0.063	1.07 (1.02–1.11)	0.0039
History of coronary artery disease	0.672	1.96 (1.24–3.10)	0.0041
Model 2 including plateau pressure			
Plateau pressure	0.041		0.0078
Obesity	1.429		0.0966
Plateau pressure obesity	− 0.062		0.0840
Plateau pressure in non-obese patients		1.04 (1.01–1.07)	
Plateau pressure in obese patients		0.98 (0.92–1.04)	
SAPS II	0.026	1.03 (1.02–1.04)	< 0.0001
SOFA at admission	0.063	1.07 (1.02–1.11)	0.0038
History of coronary artery disease	0.665	1.94 (1.23–3.09)	0.0047
Model 3 including Crs			
Crs	− 0.027		0.0005
Obesity	− 0.967		0.0128
Crs obesity	− 0.079		0.0354
Crs in non-obese patients		0.97 (0.96–0.99)	
Crs in obese patients		1.00 (0.99–1.02)	
SAPS II	0.027	1.03 (1.02–1.04)	< 0.0001
SOFA at admission	0.065	1.07 (1.02–1.11)	0.0027
History of coronary artery disease	0.689	1.99 (1.26–3.15)	0.0032

HR for tidal compliance is presented for a one-point increase

CI confidence interval, HR hazard ratio, SAPS simple acute physiologic score, SOFA sequential organ failure assessment, Crs compliance of the respiratory system

The current study has some limitations. First, the design was monocentric with a retrospective analysis, which limits the generalizability of the results. However, the data were collected prospectively with the ICU software, and the management of ARDS patients was standardized (lung-protective mechanical ventilation). Only 28% of the present study population was included in randomized controlled trials, and 72% of the study population was consequently a “real-life” observational population. This point allows an external validation of previous results obtained in non-obese patients issued only from randomized controlled trials [14, 15]. Second, a few data are

missing regarding the driving pressure [5/105 (5%) in obese patients and 28/290 (10%) in non-obese patients]. Missing data were considered as MCAR after a sensitivity analysis using a best-worst case analysis, which allowed complete case analysis [30]. Third, although weight was determined on ICU admission, we cannot exclude the possibility that fluids given prior to admission may have affected the BMI. Fourth, the pattern of body fat distribution seems to be relevant to the changes in lung function observed in obese patients [31]. Changes in chest wall compliance are more affected by the amount of fat in both the chest and upper abdomen than by the amount of fat only in the chest, suggesting that respiratory system mechanics may differ in obese individuals with the same BMI but with different patterns of body fat distribution, which was not assessed in the current study. Future studies should be performed, separating abdominal from non-abdominal obesity.

The results of the current study suggest that driving pressure may not be appropriate to assess the severity of obese ARDS patients. A recent study examined the relationship between respiratory system and transpulmonary driving pressure, pulmonary mechanics and day-28 mortality [32]. The results suggest that utilizing PEEP titration to target positive transpulmonary pressure via esophageal manometry causes both improved elastance and driving pressures. Treatment strategies leading to decreased respiratory system and transpulmonary driving pressure at 24 h were found to be associated with improved 28-day mortality. In obese patients, Eichler et al. [33] showed that during laparoscopic bariatric surgery patients require high peroperative levels of PEEP to maintain positive transpulmonary pressure throughout the respiratory cycle. In the critical care setting, Pirrone et al. [34] first revealed that the commonly used positive end-expiratory pressure by clinicians is inadequate for optimal mechanical ventilation of morbidly obese patients, and then Fumagalli et al. [35] found that in obesity low-to-negative values of transpulmonary pressure predict lung collapse and intratidal recruitment/derecruitment. Our results further support the use of transpulmonary pressure rather than driving pressure to monitor obese patients with ARDS, which could lead to higher set levels of PEEP in this specific population [33, 34], to work against derecruitment.

### Conclusions

Contrary to non-obese ARDS patients, 90-day mortality was not associated with higher driving pressure across the respiratory system in obese ARDS patients. We suspected that pre-defined ventilator settings that are similar for obese and non-obese patients may not be appropriate for both since PEEP requirements and the resulting driving pressure of the respiratory system might vary widely among patients because of their individual anatomy and



physiology. Measuring transpulmonary pressure using esophageal pressure could be of interest in obese patients as a prognostic factor of mortality and to optimize the ventilatory settings (i.e., individualized PEEP).

Author details

<sup>1</sup> Anesthesiology and Intensive Care; Anesthesia and Critical Care Department B, Saint Eloi Teaching Hospital, PhyMedExp, University of Montpellier, INSERM U1046, CNRS, UMR 9214, 80 Avenue Augustin Fliche, 34295 Montpellier Cedex 5, France. <sup>2</sup> Anesthesiology and Intensive Care; Anesthesia and Critical Care Department B, Saint Eloi Teaching Hospital, Montpellier Cedex 5 34295, France. <sup>3</sup> Department of Statistics, University of Montpellier Lapeyronie Hospital, UMR 729, MISTEA, Montpellier, France.

Author contributions

AJ contributed to the conception and design of the study, analysis and interpretation of data, drafting the submitted article and providing the final approval of the version to be published. JC contributed to acquisition of the data, analysis of the data, drafting the submitted article and providing final approval of the version to be published. DV contributed to the acquisition of the data and providing the final approval of the version to be published. CM contributed to the acquisition of the data and to providing final approval of the version to be published. JC contributed to the acquisition of data and drafting the submitted article. MC contributed to the acquisition of the data and providing final approval of the version to be published. MC contributed to the acquisition of the data and providing final approval of the version to be published. FB contributed to the acquisition of the data and providing final approval of the version to be published. NM contributed to the acquisition of the data and providing final approval of the version to be published. GC contributed to the analysis and interpretation of the data and to providing final approval of the version to be published. SJ contributed to the conception and design of the study, analysis and interpretation of data, drafting the submitted article and providing final approval of the version to be published.

Funding

Support was provided solely from institutional and/or departmental sources.

Compliance with ethical standards

Conflicts of interest

Dr. Jaber reports receiving consulting fees from Dräger, Hamilton, Maquet and Fisher & Paykel. No potential conflict of interest relevant to this article was reported for other authors.

Ethical approval

Approval from the local scientific and ethics committee of the “Comité d’Organisation et de Gestion de l’Anesthésie Réanimation” (COGAR) of the Montpellier University Hospital was obtained; they stated that no informed consent of the patient or next of kin was required because there was no change in care practices.

References

1. Afshin A, Forouzanfar MH, Reitsma MB, Sur P, Estep K, Lee A, Marczak L, Mokdad AH, Moradi-Lakeh M, Naghavi M, Salama JS, Vos T, Abate KH, Abbafati C, Ahmed MB, Al-Aly Z, Alkerwi A, Al-Raddadi R, Amare AT, Amberbir A, Amegah AK, Amini E, Amrock SM, Anjana RM, Arnlov J, Asayesh H, Banerjee A, Barac A, Baye E, Bennett DA, Beyene AS, Biadgilign S, Biryukov S, Bjertness E, Boneya DJ, Campos-Nonato I, Carrero JJ, Cecilio

P, Cercy K, Ciobanu LG, Cornaby L, Damtew SA, Dandona L, Dandona R, Dharmaratne SD, Duncan BB, Eshrati B, Esteghamati A, Feigin VL, Fernandes JC, Furst T, Gebrehiwot TT, Gold A, Gona PN, Goto A, Habte-wold TD, Hadush KT, Hafezi-Nejad N, Hay SI, Horino M, Islami F, Kamal R, Kasaiean A, Katikireddi SV, Kengne AP, Kesavachandran CN, Khader YS, Khang YH, Khubchandani J, Kim D, Kim YJ, Kinfu Y, Kosen S, Ku T, Defo BK, Kumar GA, Larson HJ, Leinsalu M, Liang X, Lim SS, Liu P, Lopez AD, Lozano R, Majeed A, Malekzadeh R, Malta DC, Mazidi M, McAlinden C, McGarvey ST, Mengistu DT, Mensah GA, Mensink GBM, Mezgebe HB, Mirrahimov EM, Mueller UO, Noubiap JJ, Obermeyer CM, Ogbo FA, Owolabi MO, Patton GC, Pourmalek F, Qorbani M, Rafay A, Rai RK, Ranabhat CL, Reinig N, Safiri S, Salomon JA, Sanabria JR, Santos IS, Sartorius B, Sawhney M, Schmidhuber J, Schutte AE, Schmidt MI, Sepanlou SG, Shamsizadeh M, Sheikhbahaei S, Shin MJ, Shiri R, Shiue I, Roba HS, Silva DAS, Silverberg JL, Singh JA, Stranges S, Swaminathan S, Tabares-Seisdedos R, Tadese F, Tedla BA, Tegegne BS, Terkawi AS, Thakur JS, Tonelli M, Topor-Madry R, Tyrovolas S, Ukwaja KN, Uthman OA, Vaezghasemi M, Vasankari T, Vlassov VV, Vollset SE, Weiderpass E, Werdecker A, Wesana J, Westerman R, Yano Y, Yonemoto N, Yonga G, Zaidi Z, Zenebe ZM, Zipkin B, Murray CJL (2017) Health effects of overweight and obesity in 195 countries over 25 years. *N Engl J Med* 377:13–27

2. Montravers P, Ribeiro-Parenti L, Welsch C (2015) What’s new in post-operative intensive care after bariatric surgery? *Intensive Care Med* 41:1114–1117

3. De Jong A, Molinari N, Pouzeratte Y, Verzilli D, Chanques G, Jung B, Futier E, Perrigault PF, Colson P, Capdevila X, Jaber S (2015) Difficult intubation in obese patients: incidence, risk factors, and complications in the operating theatre and in intensive care units. *Br J Anaesth* 114:297–306

4. Pepin JL, Timsit JF, Tamisier R, Borel JC, Levy P, Jaber S (2016) Prevention and care of respiratory failure in obese patients. *Lancet Respir Med* 4:407–418

5. Mahul M, Jung B, Galia F, Molinari N, de Jong A, Coisel Y, Vaschetto R, Matecki S, Chanques G, Brochard L, Jaber S (2016) Spontaneous breathing trial and post-extubation work of breathing in morbidly obese critically ill patients. *Crit Care* 20:346

6. Gong MN, Bajwa EK, Thompson BT, Christiani DC (2010) Body mass index is associated with the development of acute respiratory distress syndrome. *Thorax* 65:44–50

7. Anzueto A, Frutos-Vivar F, Esteban A, Bensalame N, Marks D, Raymonds K, Apezteguia C, Arabi Y, Hurtado J, Gonzalez M, Tomicic V, Abroug F, Eliazalde J, Cakar N, Pelosi P, Ferguson ND, Ventila Group (2011) Influence of body mass index on outcome of the mechanically ventilated patients. *Thorax* 66:66–73

8. De Jong A, Molinari N, Sebbane M, Prades A, Futier E, Jung B, Chanques G, Jaber S (2013) Feasibility and effectiveness of prone position in morbidly obese patients with ARDS: a case-control clinical study. *Chest* 143:1554–1561

9. Delay J-M, Sebbane M, Jung B, Nocca D, Verzilli D, Pouzeratte Y, Kamel ME, Fabre J-M, Eledjam J-J, Jaber S (2008) The effectiveness of non-invasive positive pressure ventilation to enhance preoxygenation in morbidly obese patients: a randomized controlled study. *Anesth Analg* 107:1707–1713

10. Futier E, Constantin JM, Pelosi P, Chanques G, Massone A, Petit A, Kwiatkowski F, Bazin JE, Jaber S (2011) Noninvasive ventilation and alveolar recruitment maneuver improve respiratory function during and after intubation of morbidly obese patients: a randomized controlled study. *Anesthesiology* 114:1354–1363

11. De Jong A, Futier E, Millot A, Coisel Y, Jung B, Chanques G, Baillard C, Jaber S (2014) How to preoxygenate in operative room: healthy subjects and situations “at risk”. *Ann Fr Anesth Reanim* 33:457–461

12. Constantin JM, Jaber S (2012) Preoxygenation in obese patient with non-invasive pressure support ventilation: keep the pressure. *Ann Fr Anesth Reanim* 31:673–674

13. O’Brien JM Jr, Philips GS, Ali NA, Aberegg SK, Marsh CB, Lemeshow S (2012) The association between body mass index, processes of care, and outcomes from mechanical ventilation: a prospective cohort study. *Crit Care Med* 40:1456–1463

14. Amato MB, Meade MO, Slutsky AS, Brochard L, Costa EL, Schoenfeld DA, Stewart TE, Briel M, Talmor D, Mercat A, Richard JC, Carvalho CR, Brower RG (2015) Driving pressure and survival in the acute respiratory distress syndrome. *N Engl J Med* 372:747–755

15. Guerin C, Papazian L, Reignier J, Ayzac L, Loundou A, Forel JM (2016) Effect of driving pressure on mortality in ARDS patients during lung protective mechanical ventilation in two randomized controlled trials. *Crit Care* 20:384
16. Bellani G, Laffey JG, Pham T, Fan E, Brochard L, Esteban A, Gattinoni L, van Haren F, Larsson A, McAuley DF, Ranieri M, Rubenfeld G, Thompson BT, Wrigge H, Slutsky AS, Pesenti A (2016) Epidemiology, patterns of care, and mortality for patients with acute respiratory distress syndrome in intensive care units in 50 countries. *JAMA* 315:788–800
17. Schmidt MFS, Amaral A, Fan E, Rubenfeld GD (2017) Driving pressure and hospital mortality in patients without ards: a cohort study. *Chest* 153:46–56
18. Villar J, Martin-Rodriguez C, Dominguez-Berrot AM, Fernandez L, Ferrando C, Soler JA, Diaz-Lamas AM, Gonzalez-Higuera E, Nogales L, Ambros A, Carriedo D, Hernandez M, Martinez D, Blanco J, Belda J, Parrilla D, Suarez-Sipmann F, Tarancon C, Mora-Ordóñez JM, Blanch L, Perez-Mendez L, Fernandez RL, Kacmarek RM (2017) A quantile analysis of plateau and driving pressures: effects on mortality in patients with acute respiratory distress syndrome receiving lung-protective ventilation. *Crit Care Med* 45:843–850
19. Aoyama H, Pattenuzzo T, Aoyama K, Pinto R, Englesakis M, Fan E (2017) Association of driving pressure with mortality among ventilated patients with acute respiratory distress syndrome: a systematic review and meta-analysis. *Crit Care Med* 46:300–306
20. De Jong A, Chanques G, Jaber S (2017) Mechanical ventilation in obese ICU patients: from intubation to extubation. *Crit Care* 21:63
21. (1998) Executive summary of the clinical guidelines on the identification, evaluation, and treatment of overweight and obesity in adults. *Arch Intern Med* 158:1855–1867
22. Ranieri VM, Rubenfeld GD, Thompson BT, Ferguson ND, Caldwell E, Fan E, Camporota L, Slutsky AS (2012) Acute respiratory distress syndrome: the Berlin Definition. *JAMA* 307:2526–2533
23. De Jong A, Deras P, Martinez O, Latry P, Jaber S, Capdevila X, Charbit J (2016) Relationship between obesity and massive transfusion needs in trauma patients, and validation of tash score in obese population: a retrospective study on 910 trauma patients. *PLoS One* 11:e0152109
24. Guérin C, Reignier J, Richard J-C, Beuret P, Gacouin A, Boulain T, Mercier E, Badet M, Mercat A, Baudin O, Clavel M, Chatellier D, Jaber S, Rosselli S, Mancebo J, Sirodot M, Hilbert G, Bengler C, Richecœur J, Gainnier M, Bayle F, Bourdin G, Leray V, Girard R, Baboi L, Ayzac L, Group PS (2013) Prone positioning in severe acute respiratory distress syndrome. *N Engl J Med* 368:2159–2168
25. Early Spontaneous Breathing in Acute Respiratory Distress Syndrome (BIRDS). <https://clinicaltrials.gov/ct2/show/NCT01862016>. Accessed 20 Feb 2018
26. Jabaudon M, Godet T, Futier E, Bazin JE, Sapin V, Roszyk L, Pereira B, Constantin JM (2017) Rationale, study design and analysis plan of the lung imaging morphology for ventilator settings in acute respiratory distress syndrome study (LIVE study): study protocol for a randomised controlled trial. *Anaesth Crit Care Pain Med* 36:301–306
27. Mauri T, Yoshida T, Bellani G, Goligher EC, Carreaux G, Rittayamai N, Mojoli F, Chiumello D, Piquilloud L, Grasso S, Jubran A, Laghi F, Magder S, Pesenti A, Loring S, Gattinoni L, Talmor D, Blanch L, Amato M, Chen L, Brochard L, Mancebo J (2016) Esophageal and transpulmonary pressure in the clinical setting: meaning, usefulness and perspectives. *Intensive Care Med* 42:1360–1373
28. De Jong A, Verzilli D, Sebbane M, Monnin M, Belafia F, Cisse M, Conseil M, Carr J, Jung B, Chanques G, Molinari N, Jaber S (2018) Medical versus surgical ICU obese patient outcome: a propensity-matched analysis to resolve clinical trial controversies. *Crit Care Med* 46:e294
29. De Jong A, Carreira S, Na N, Carillion A, Jiang C, Beuvin M, Lacorte JM, Bonnefont-Rousselot D, Riou B, Coirault C (2017) Diaphragmatic function is enhanced in fatty and diabetic fatty rats. *PLoS One* 12:e0174043
30. Mukaka M, White SA, Terlow DJ, Mwapasa V, Kalilani-Phiri L, Faragher EB (2016) Is using multiple imputation better than complete case analysis for estimating a prevalence (risk) difference in randomized controlled trials when binary outcome observations are missing? *Trials* 17:341
31. Mafort TT, Rufino R, Costa CH, Lopes AJ (2016) Obesity: systemic and pulmonary complications, biochemical abnormalities, and impairment of lung function. *Multidiscip Respir Med* 11:28
32. Baedorf Kassiss E, Loring SH, Talmor D (2016) Mortality and pulmonary mechanics in relation to respiratory system and transpulmonary driving pressures in ARDS. *Intensive Care Med* 42:1206–1213
33. Eichler L, Truskowska K, Dupree A, Busch P, Goetz AE, Zollner C (2017) Intraoperative ventilation of morbidly obese patients guided by transpulmonary pressure. *Obes Surg* 8:122–129
34. Pirrone M, Fisher D, Chipman D, Imber DA, Corona J, Mietto C, Kacmarek RM, Berra L (2016) Recruitment maneuvers and positive end-expiratory pressure titration in morbidly obese ICU patients. *Crit Care Med* 44:300–307
35. Fumagalli J, Berra L, Zhang C, Pirrone M, Santiago RRS, Gomes S, Magni F, Dos Santos GAB, Bennett D, Torsani V, Fisher D, Morais C, Amato MBP, Kacmarek RM (2017) Transpulmonary pressure describes lung morphology during decremental positive end-expiratory pressure trials in obesity. *Crit Care Med* 45:1374–1381
36. Gattinoni L, Tonetti T, Cressoni M, Cadringer P, Herrmann P, Moerer O, Protti A, Gotti M, Chiurazzi C, Carlesso E, Chiumello D, Quintel M (2016) Ventilator-related causes of lung injury: the mechanical power. *Intensive Care Med* 42:1567–1575