



HAL
open science

Daily urinary creatinine predicts the weaning of renal replacement therapy in ICU acute kidney injury patients

Nicolas Viallet, Vincent Brunot, Nils Kuster, Delphine Daubin, Noémie Besnard, Laura Platon, Aurèle Buzançais, R. Larcher, Olivier Jonquet, Kada Klouche

► To cite this version:

Nicolas Viallet, Vincent Brunot, Nils Kuster, Delphine Daubin, Noémie Besnard, et al.. Daily urinary creatinine predicts the weaning of renal replacement therapy in ICU acute kidney injury patients. *Annals of Intensive Care*, 2016, 6 (1), pp.71. 10.1186/s13613-016-0176-y . hal-01802402

HAL Id: hal-01802402

<https://hal.umontpellier.fr/hal-01802402>

Submitted on 29 Mar 2020

HAL is a multi-disciplinary open access archive for the deposit and dissemination of scientific research documents, whether they are published or not. The documents may come from teaching and research institutions in France or abroad, or from public or private research centers.

L'archive ouverte pluridisciplinaire **HAL**, est destinée au dépôt et à la diffusion de documents scientifiques de niveau recherche, publiés ou non, émanant des établissements d'enseignement et de recherche français ou étrangers, des laboratoires publics ou privés.

Daily urinary creatinine predicts the weaning of renal replacement therapy in ICU acute kidney injury patients

Nicolas Viallet¹, Vincent Brunot¹, Nils Kuster², Delphine Daubin¹, Noémie Besnard¹, Laura Platon¹, Aurèle Buzançais¹, Romaric Larcher¹, Olivier Jonquet¹ and Kada Klouche^{1,3*}

Abstract

Background: In acute kidney injury (AKI), useless continuation of renal replacement therapy (RRT) may delay renal recovery and impair patient's outcome. In this study, we aimed to identify predictive parameters that may help to a successful RRT weaning for AKI patients.

Methods: We studied 54 surviving AKI patients in which a weaning of RRT was attempted. On the day of weaning (D_0) and the following 2 days (D_1 and D_2), SAPS II and SOFA scores, 24-h diuresis, 24-h urinary creatinine and urea (UCr and UUr), creatinine and urea generation rates (CrGR and UrGR) and clearances (CrCl and UrCl) were collected. Patients who remained free of RRT 15 days after its discontinuation were considered as successfully weaned.

Results: Twenty-six RRT weaning attempts succeeded (S_+) and 28 failed (S_-). Age, previous renal function, SAPS II and SOFA scores were comparable between groups. At D_0 , 24-h diuresis was 2300 versus 1950 ml in S_+ and S_- , respectively, $p = 0.05$. At D_0 , D_1 and D_2 , 24-h UUr and UCr levels, UrCl and CrCl, and UUr/UrGR and UCr/CrGR ratios were significantly higher in S_+ group. By multivariate analysis, D_1 24-h UCr was the most powerful parameter that was associated with RRT weaning success with an area under the ROC curve of 0.86 [0.75–0.97] and an odds ratio of 2.01 [1.27–3.18], $p = 0.003$.

Conclusions: In ICU AKI, 24-h UCr appeared as an efficient and independent marker of a successful weaning of RRT. A 24-h UCr ≥ 5.2 mmol was associated with a successful weaning in 84 % of patients.

Keywords: Acute kidney injury, Renal replacement therapy, Weaning, Urine output, Urinary creatinine

Background

Acute kidney injury (AKI) is a common condition in the intensive care unit (ICU). Approximately 5 % of ICU patients suffering from AKI require renal replacement therapy (RRT) [1]. Such patients have a hospital mortality rate of 45–70 % [1–6], and those surviving to hospital discharge continue to carry a high risk for long-term morbidity and mortality [7–10]. Several studies have shown that between 10 and 30 % of patients with AKI who required RRT will remain dialysis dependent at discharge

[7–13]. Yet, renal function in AKI surviving patients requiring RRT ultimately recovers in the vast majority of case (more than 90 % of patients) [14]. However, performances of RRT may have untoward effects that contribute to the prolongation of renal failure or impede the ultimate recovery of renal function [15]. Indeed, RRT represents an independent and an added risk factor for mortality [16–18] as it exposes the patient to several complications like catheter-related infections or thrombosis, bleeding favored by anticoagulation, hemodynamic instability. The prolonged continuation of RRT could also be deleterious for renal recovery, particularly in cases of intradialytic hemodynamic instability, inducing renal ischemic lesions [19]. Renal biopsy in patients with prolonged AKI treated by hemodialysis showed regions

*Correspondence: k-klouche@chu-montpellier.fr

¹ Department of Intensive Care Medicine, Lapeyronie University Hospital, 371, Avenue du Doyen G. Giraud, 34295 Montpellier, France

of fresh tubular necrosis days-to-weeks after the initial insult [20]. RRT may also delay renal recovery possibly by purification of mediators and growth factors needful for the tubular repair [21]. Moreover, RRT may remove unpredictable amounts of antibiotics, amino acids and nutrients. Also, RRT represents a significant additional cost in the patient's care. It is therefore a matter of concern to identify which factors present at the time of discontinuation may help physicians in predicting successful cessation of RRT [22]. To the best of our knowledge, a paucity of studies has been reported on RRT weaning during AKI [23–26]. Sepsis-related Organ Failure Assessment (SOFA) score [23, 26] and 2-h creatinine clearance [25] have been reported as a reliable predictive factors, but urine output remains the most consistent parameter significantly associated with the success of weaning [24]. This study was therefore undertaken to investigate and identify parameters, particularly 24-h urinary creatinine, present at the time of RRT weaning that would be associated with successful cessation of RRT during AKI.

Patients and methods

This retrospective study was conducted, from January 2008 to December 2012, in two medical ICUs of the Montpellier University Hospital, France. It was approved by our local institutional review board (Ethic Committee of Montpellier; Comité de protection des personnes: CPP Sud Méditerranée 4) which waived informed consent from the patients or their relatives.

Study population

Patients admitted to the ICU for AKI requiring RRT that survived and in which an attempt of weaning was realized were enrolled in the study. Exclusion criteria included pregnancy, age <18 years old, previous chronic renal failure stage ≥ 4 , AKI of obstructive, glomerular or vascular etiology. AKI patients that underwent acute RRT for less than 3 days (no attempt of weaning), and patients without an attempt of weaning RRT or transferred to another unit before an attempt of weaning were also excluded. Decisions regarding the initiation, management and discontinuation of RRT were made by the referring physician according to the guidelines of the intensive care and nephrology societies [22]. The choice of RRT modality was depending on patient hemodynamic stability and was daily re-evaluated. Patients with hemodynamic instability or severe fluid overload were preferentially treated with pre-dilutional continuous venovenous hemodiafiltration (CVVHDF) or on-line sustained low-efficiency daily dialysis-filtration (SLEDD-f), and those with hemodynamic stability were preferentially treated with on-line intermittent hemodiafiltration (IHDF) [27].

Study design

An RRT cessation was considered as an attempt of weaning when referred to a medical decision and if it lasted more than 72 h. Only the first attempt was analyzed for each patient. Current criteria required for weaning attempt were the association of an urine output of at least 20 ml/h without diuretics [24, 28], a restored and stable hemodynamic and respiratory conditions, no new kidney aggression (mainly toxic and predictable), no need to continue RRT for the previously mentioned reasons. A successful weaning was defined as the cessation of RRT for at least 15 days. This endpoint defined two groups of patients: S_+ for the success of the weaning attempt and S_- if it failed.

Data collection

Baseline patient characteristics were recorded, including age, gender, cause of AKI, comorbidities, previous renal function (estimation of glomerular filtration rate—eGFR, by the Chronic Kidney Disease Epidemiology, CKD-epi formula [29]), weight, urine volume. Severity of illness was determined at the inclusion using the simplified acute physiology score II (SAPS II) and the Sequential Organ Failure Assessment (SOFA) score. RRT modalities were collected during treatment.

Day 0 (D_0) was defined as the day of RRT cessation at the weaning attempt, and D_1 , D_2 the 2 following days. From D_0 to D_2 , we daily collected the following parameters: non-renal SOFA score, patient's weight, 24-h urine output, dose of furosemide, fluid balance (intake output), mean arterial pressure, dose of vasopressors, use of mechanical ventilation, creatinine and urea blood and urine levels. Blood samples were drawn and 24-h urine samples were collected at D_0 and every following day. Creatinine and urea clearance (CrCl and UrCl), diuretic response index and creatinine and urea generation rate (CrGR and UrGR, respectively) were estimated at D_1 and D_2 according to:

- Diuretic response index (ml/mg) = 24-h urine output (ml)/daily dose of furosemide (mg)
- CrGR D_1 ($\mu\text{mol}/\text{mn}$) = $[(\text{SCr}D_1 - \text{SCr}D_0) \times 0.6 \times \text{weight}] + (\text{UCr} \times \text{urine volume})/\text{time } D_0 - D_1$
- UrGR D_1 ($\mu\text{mol}/\text{mn}$) = $[(\text{SUR}D_1 - \text{SUR}D_0) \times 0.6 \times \text{weight}] + (\text{UUr} \times \text{urine volume})/\text{time } D_0 - D_1$
- CrCl (ml/mn) = $(\text{UCr} \times 24\text{-h urine volume})/(\text{Scr} \times 1440)$
- UrCl (ml/mn) = $(\text{UUr} \times 24\text{-h urine volume})/(\text{Sur} \times 1440)$

where SCr: serum creatinine ($\mu\text{mol}/\text{l}$), UCr: urinary creatinine (mmol/l), SUR: serum urea (mmol/l), UUr: urinary urea (mmol/l), weight (kg), urine volume (l), time (min).

Early re-renal replacement therapy, defined as relapsed need for RRT within 15 days after D_0 was considered as the primary outcome variable. Duration of mechanical ventilation, vasopressor treatment and RRT, hospital and 3-month mortality, and the need of RRT after 3 months were also collected.

Statistical analyses

Statistical analyses were performed using the software R 3.1.0 (R Foundation for Statistical Computing, Vienna, Austria). We first performed a descriptive analysis by computing the frequencies and the percents for categorical data; means or medians, standard deviations, quartiles and extreme values for continuous data. We also checked for the normality of the continuous data distribution using the Shapiro–Wilk tests. The univariate analysis was performed using two-tailed Student's *t* test for continuous variables, Fisher and Chi-square tests for categorical variables or two-tailed Mann–Whitney–Wilcoxon test when appropriate. The areas under the receiver operator characteristic (ROC) curves and their confidence interval (CI) were calculated using the method of DeLong. The optimal threshold value was set for each ROC curve through the Youden index (corresponding to the maximum of the sum sensitivity + specificity). CIs for sensitivity (Se), specificity (Sp), positive predictive value (PPV) and negative predictive value (NPV) were calculated by bootstrap (2000 bootstrap samples). The most relevant variables including urine output, serum creatinine, creatinine clearance, urea and creatinine generation rate and 24-h urinary urea and creatinine obtained by logistic regression were included in multivariate models. The urea and creatinine kinetics in the two groups of patients were modeled using mixed models. A *p* value less than 0.05 was considered statistically significant.

Results

Population

During the study period, 377 consecutive patients were admitted in ICUs with AKI treated by RRT in which 179 survived (survival rate 47.4 %). After exclusion of 125 patients, 54 were eligible for analysis: 18 females and 36 males (flowchart, Fig. 1). Patient's characteristics, main comorbidities and reasons of ICU admission are summarized in Table 1. The RRT modalities were equally represented in the study population. At D_0 , non-renal SOFA score has decreased reaching a median value of 3, and more than half of population was still on mechanical ventilation (Table 2). Median duration of RRT prior to the first attempt of weaning was 11 days.

Factors related to the success of weaning of RRT

Among the 54 patients, 26 attempts of weaning succeeded (S_+ group) while 28 failed (S_- group). Baseline

characteristics of the two groups were comparable (Table 1). The proportion of CVVHDF was more important in S_+ group (50 vs 21 %) and conversely for IHDF, but differences were not statistically significant ($p = 0.07$). At the day of RRT cessation, the proportion of patients mechanically ventilated was similar between groups as were non-renal SOFA score and prior duration of RRT. Clinical parameters including mean arterial pressure, dose of vasopressors, mechanical ventilation and fluid balance did not differ between the two groups. However, a higher weight decrease was observed in the success group but without significant differences (Table 2).

At D_0 , D_1 and D_2 urea and creatinine blood levels did not differ between the two groups (Table 3). At D_0 , 24-h urine output tended to be higher in S_+ group (2300 vs 1950 ml, $p = 0.052$) but most of patients were treated by diuretics in both groups (73 vs 86 %). Diuretic response index was significantly higher in the S_+ group at D_0 with a significant decrease in furosemide dose the following two days as compared to S_- (Table 3). UrCl, CrCl, UUr and UCr levels were significantly higher in group S_+ at D_0 , D_1 and D_2 . UUr/UrGR and UCr/CrGR ratios were also significantly higher in S_+ group (Table 3). By multivariate analysis, 24-h UCr was the most powerful variable to predict the success of RRT weaning. At D_0 , its area under the ROC curve (AUC and 95 % CI) was 0.76 [0.62–0.89] as compared to that of 24-h urine output: 0.66 [0.51–0.80] (Fig. 2). AUC of 24-h urinary creatinine was 0.86 [0.75–0.97] and 0.86 [0.75–0.97] at D_1 and D_2 , respectively (Fig. 2). D_1 24-h creatinuria was a strong predictor of successful weaning with an odds ratio at 2.01 [1.27–3.18], $p = 0.003$, independently of age, weight and diuresis and showed Se, Sp, NPV and PPV at 75, 88, 82 and 84 %, respectively, when ≥ 5.2 mmol/24 h [3.1–6.3] (Table 4).

Patients' outcome

A significantly shorter ICU length of stay (13.5 vs 24.5 days) and a shorter duration of RRT (10.5 vs 18 days) were observed in the S_+ group (Table 1). Patients from the S_- group had resumed RRT 4 (3–11) days after the attempt of weaning. Twenty-one of the 28 patients of this group were weaned of RRT after a second attempt, whereas 7 needed more than two attempts (only one patient was re-dialyzed after the seventh day). Hospital survival was at 100 % in both groups, but 3 months later, 4 patients deceased in the S_- group and none in the S_+ group.

Discussion

In this study, we found that almost half of surviving AKI patients treated with RRT had their treatment stopped at the first attempt. We found also that the capability of

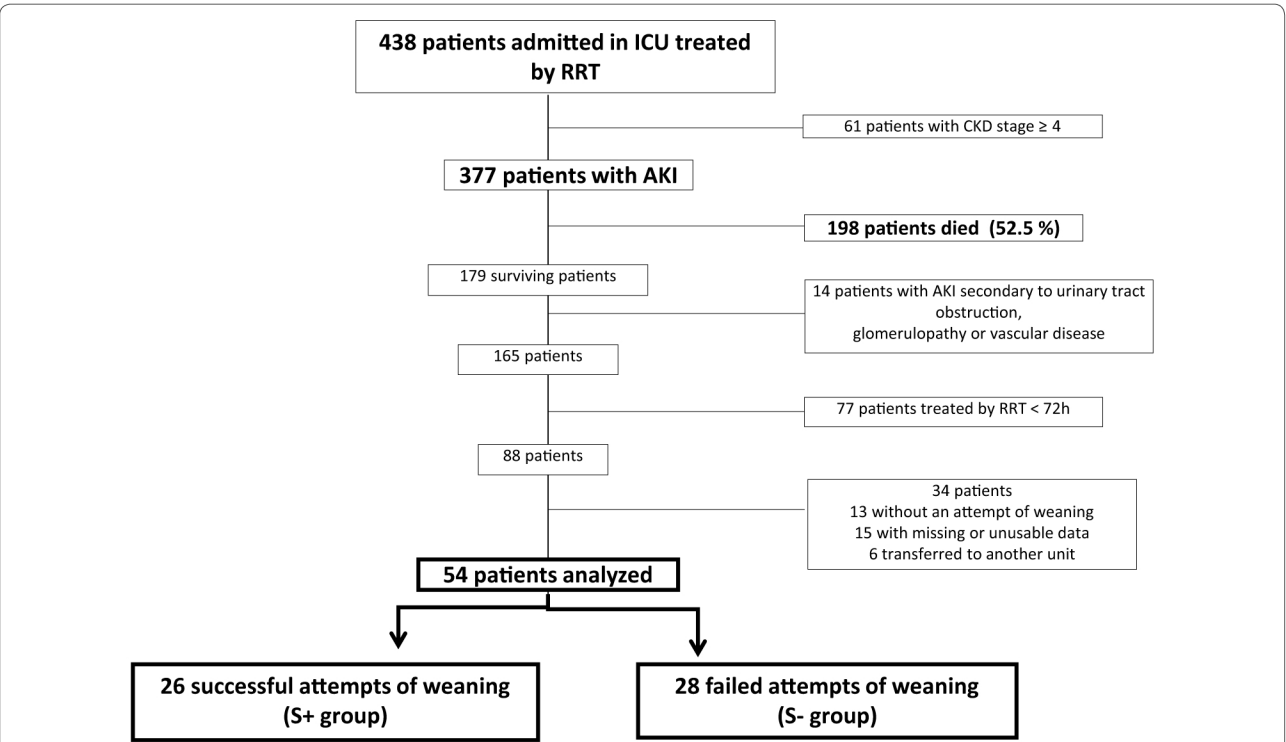


Fig. 1 Flowchart of the study population

24-h urine output to predict RRT weaning was significantly altered by the use of diuretics. In contrast, 24-h urinary creatinine appeared as a powerful marker of successful discontinuation of RRT even if patients received diuretics.

A large majority of ICU patients with AKI may recover sufficient kidney function to be independent of RRT. Indeed, all surviving patients we investigated herein recovered and were weaned from RRT even if several weaning attempts were necessary in some of them. Currently, practices of RRT weaning during AKI depend on every center policy and vary from a “wait and see” and a “go fast” attitudes. The “wait and see” attitude may prolong needlessly RRT and expose the patient to its hazardous effects without any benefits. Conversely a “go fast” attitude may lead to several unsuccessful attempts of weaning with the subsequent requirement of re-institution that is by itself harmful. Appropriate cessation of RRT is obviously critical regarding clinical and economic outcomes. There is, however, a paucity of data about how and when to stop RRT in critically ill patients with AKI, and identification of predictive factors of successful cessation of RRT is scarce. This lack of evidence contrasts with the field of mechanical ventilation, where many studies dealing with the process of weaning have been conducted [30]. We sought therefore to evaluate, in

the present study, whether cessation of RRT can be early determined on the basis of clinical and routinely used parameters.

Previous studies have reported the association of the success of an interruption of RRT with age [23], previous renal function [24, 25], the prior length of RRT, the SOFA score at ICU admission [23, 26] and its decrease from admission to the day of attempt [23]. None of these parameters have been found determinant in the success of weaning in our study. Blood parameters including serum urea and creatinine and their kinetic were also helpless to guide the weaning of RRT in our population. Urine output was reported to be the most important predictor of successful discontinuation of RRT. In the trial by Bouman et al. [31], continuous RRT was discontinued when the urine output returned to and was stable at more than 60 ml/h, but there were no data about the optimal rate of urine output predicting the success of weaning. Wu et al. [23] evaluated retrospectively 94 patients weaned from IHDF for 5 or more days, of which 64 were free from RRT for ≥ 30 days. 24-h diuresis was at 1435 ± 1172 versus 598 ± 700 ml in the success and the re-dialysis groups, respectively, but diuretics were used in 36 % of patients of both groups. Oliguria (100 ml in 8 h) was independently associated with re-initiation of RRT [23]. The BEST Kidney investigators [24] found that urine

Table 1 Patients characteristics, comorbidities, causes of ICU admission, RRT modalities at initiation of therapy and outcome according to the success or failure of RRT weaning attempt

	All patients (n = 54)	S ₊ group (n = 26)	S ₋ group (n = 28)	p
Age (years)	63.5 [56–72.8]	61.5 [56–71]	67.5 [56.5–75.5]	0.12
Male [n (%)]	36 (67)	20 (77)	16 (51)	0.09
SAPS II	55 [39–69]	54 [39.5–65.8]	56 [40.5–74.5]	0.36
SOFA	11 [8–13]	11 [8.3–13]	11 [8.5–13]	0.51
Previous eGFR (ml/min/1.73 m ²)	70 [45–92]	77 [45–96]	65 [46–89]	0.46
Main comorbidities [n (%)]				
Hypertension	28 (52)	12 (46)	16 (57)	0.16
Diabetes	19 (35)	8 (31)	11 (39)	
Cardiac failure	8 (15)	4 (15)	4 (14)	
Hemopathy	8 (15)	2 (8)	6 (21)	
Main reason for ICU admission [n (%)]				
Septic shock	28 (52)	11 (42)	17 (61)	0.15
Cardiogenic shock/cardiac arrest	10 (19)	5 (19)	5 (18)	
Post-surgical	6 (13)	3 (12)	3 (11)	
Other	10 (13)	5 (19)	5 (18)	
Initial RRT technique [n (%)]				
IHDF	19 (35)	6 (23)	13 (46)	0.07
CVVHDF	19 (35)	13 (50)	6 (21)	
SLEDD-f	16 (30)	7 (27)	9 (32)	
Length of ICU stay (days)	19 [8.3–42]	13.5 [8.3–32.3]	24.5 [17.5–42]	0.012
Duration of RRT (days)	15 [5–35]	10.5 [5–14.8]	18 [10–35]	0.006
In-hospital mortality [n (%)]	0 (0)	0 (0)	0 (0)	–
3-month mortality [n (%)]	4 (7.4)	0 (0)	4 (14)	0.11
eGFR at 3 months (ml/min/1.73 m ²)	58 [49–92]	66 [68–92]	55 [49–77]	0.08

Italic values indicate significance of p value (p < 0.05)

Results are displayed in median [interquartile range] if quantitative variable; and number and percentage if categorial variable

p: differences between S₊ and S₋ groups

SAPS II Simplified Acute Physiology Score, SOFA Sequential Organ Failure Assessment, eGFR estimated glomerular filtration rate, IHDF intermittent hemodiafiltration, CVVHDF continuous venovenous hemodiafiltration, SLEDD-f sustained low-efficiency daily dialysis-filtration, RRT renal replacement therapy

Table 2 Characteristics of the 54 analyzed patients at the first day (D₀) of weaning of RRT

	All patients (n = 54)	S ₊ group (n = 26)	S ₋ group (n = 28)	p
Non-renal SOFA	3 [1–6]	3 [1–5]	3.5 [1–7]	0.21
Mean arterial pressure (mmHg)	83 [77–93]	85 [77–93]	83 [76–94]	0.33
Mechanical ventilation [n (%)]	30 (56 %)	15 (57.7 %)	15 (53.6 %)	0.42
Weight's variation (kg)	–2.5 [– 9.3; –2.3]	–6 [– 11; +1.5]	–1.5 [– 4.9; +4]	0.12
Prior RRT length (days)	11 [5–18]	10.5 [5–14.8]	11 [6.3–24.5]	0.46

Weight's variation means between admission and D0

p: differences between S₊ and S₋ groups

SOFA Sequential Organ Failure Assessment

output of >400 ml/day without diuretics had the best operative characteristics with a Se, Sp, PPV and NPV of 0.47, 0.81, 0.81 and 0.77, respectively. However, diuretics administration negatively affected its predictive ability. They concluded that patients with more than 400 ml/day of urine without diuretics or more than 2300 ml/day with

diuretics have more than 80 % of chance to successful discontinuation of RRT. Recently, an urine output >8.5 ml/kg/24 h was also found to predict IHDF weaning [32]. In our study, at the day of attempt, 24-h urine output failed to predict the success of weaning (2300 vs 1900 ml/24 h, p = 0.052) but a high proportion of our patients, more

Table 3 Serum urea, serum creatinine, 24-h urine output, diuretics, urea and creatinine clearance, 24-h urinary urea and creatinine, urea and creatinine generation rate, urinary urea/urea generation rate and urinary creatinine/creatinine generation rate ratios at the day (D₀) of attempt of weaning and the following two days (D₁, D₂)

	D0			D1			D2		
	S ₊	S ₋	<i>p</i>	S ₊	S ₋	<i>p</i>	S ₊	S ₋	<i>p</i>
S urea (mmol/l)	10 [7.6–13]	7.3 [6.2–12]	0.56	16 [12–24]	17 [14–21]	0.26	22 [15–37]	24 [20–27]	0.54
S creat (μmol/l)	105 [73–170]	83 [64–117]	0.36	177 [136–294]	158 [115–197]	0.15	227 [137–309]	218 [155–314]	0.65
24-h urinary output (l)	2.3 [1.5–3.5]	1.9 [1.0–2.5]	0.05	2.4 [1.8–3.7]	2.6 [1.7–3.3]	0.46	2.7 [2.1–3.4]	2.5 [1.7–3.3]	0.32
Use of furo [n (%)]	19 (73)	24 (86)	0.42	15 (59)	25 (89)	<i>0.009</i>	9 (35)	21 (75)	<i>0.005</i>
Dose of furo (mg/24 h)	470 [215–1000]	1000 [483–1000]	0.06	500 [125–970]	1000 [500–1000]	<i>0.01</i>	500 [250–1000]	1000 [500–1000]	<i>0.01</i>
Diuretic RI (ml/mg)	6 [2.9–15.4]	2.1 [1.1–6.4]	<i>0.02</i>	4.6 [3.6–26.4]	3.2 [1.9–4.3]	0.06	5.8 [2.5–8.2]	3.4 [2.6–5.8]	0.09
UrCl (ml/min)	15 [8–20]	6 [4–12]	<i>0.008</i>	12.5 [8–20]	7 [5–9]	<i>0.001</i>	13 [9–18]	6 [4–8]	< <i>0.001</i>
CrCl (ml/min)	31 [15–41]	18 [7–26]	<i>0.009</i>	31 [18–40]	15 [8–21]	<i>0.002</i>	31 [16–42]	13 [6–21]	< <i>0.001</i>
UUr (mmol/24 h)	187 [72–339]	85.9 [44–157]	<i>0.031</i>	357 [195–569]	147 [95–224]	<i>0.002</i>	592 [230–672]	236 [113–272]	<i>0.002</i>
UCr (mmol/24 h)	4.9 [2.5–6.4]	2.55 [0.7–3.9]	<i>0.002</i>	6.65 [5–8.8]	3.5 [1.6–4.4]	< <i>0.001</i>	8.1 [6–9.5]	4.4 [2.2–5.2]	< <i>0.001</i>
UrGR (μmol/min)				530 [331–722]	318 [254–442]	<i>0.02</i>	428 [257–681]	305 [232–393]	0.08
CrGR (μmol/min)				6.8 [5.8–9.9]	4.1 [2.9–5.2]	< <i>0.001</i>	6.2 [4.8–7.8]	4 [3.4–4.9]	<i>0.002</i>
UUr/UrGR (%)				51 [36–61]	36 [24–48]	<i>0.03</i>	71 [62–84]	48 [31–60]	< <i>0.001</i>
UCr/CrGR (%)				72 [53–85]	57 [40–67]	<i>0.047</i>	94 [77–100]	67 [44–82]	< <i>0.001</i>

Italic values indicate significance of *p* value (*p* < 0.05)

Results are displayed in median [interquartile range] if quantitative variable; and number and percentage if categorical variable

p: differences between S₊ and S₋ groups

S urea serum urea, S creat serum creatinine, Furo furosemide, Diuretic RI diuretic response index, Cl clearance, UUr urinary urea, UCr urinary creatinine, UrGR urea generation rate, CrGR creatinine generation rate, Ur urea, Cr creatinine

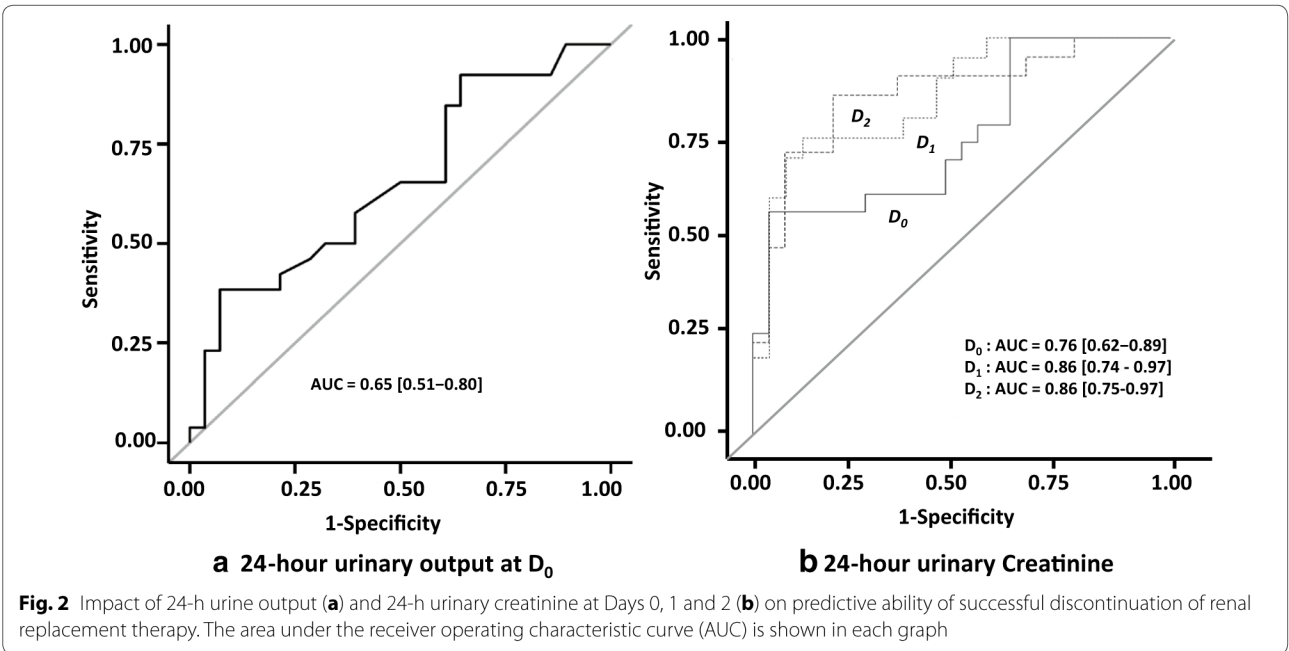


Fig. 2 Impact of 24-h urine output (a) and 24-h urinary creatinine at Days 0, 1 and 2 (b) on predictive ability of successful discontinuation of renal replacement therapy. The area under the receiver operating characteristic curve (AUC) is shown in each graph

than 75 %, received furosemide. We observed, however, that furosemide induced a significantly higher diuresis in the success group. Indeed, recent studies reported a

significantly higher urine output in case of successful discontinuation of RRT even if diuretics were used [25, 26]. Nevertheless, the usefulness of diuresis to guide RRT

Table 4 Performances of 24-h urine output, 24-h urinary creatinine and urea to predict the success of an attempt of renal replacement therapy weaning

	Youden index [95 % CI]	Sensitivity % [95 % CI]	Specificity % [95 % CI]	PPV % [95 % CI]	NPV % [95 % CI]
D0 urinary output (ml/24 h)	2575 [1050–3075]	38.5 [19–58]	93 [82–100]	85 [61.5–100]	62 [55–71]
D0 urinary urea (mmol/24 h)	134 [56–322]	65 [48–83]	73 [58–88.5]	68 [53–84]	70 [58–84]
D0 urinary creatinine (mmol/24 h)	4.7 [0.85–5.1]	56.5 [35–74]	96 [88.5–100]	93 [78–100]	71 [62.5–81]
D1 urinary urea (mmol/24 h)	293 [196–363]	70 [50–90]	88 [76–100]	83 [67–100]	79 [68–92]
D1 urinary creatinine (mmol/24 h)	5.15 [3.01–6.3]	75 [55–90]	88 [72–100]	84 [68–100]	82 [70–93]
D2 urinary urea (mmol/24 h)	318 [292–591]	71 [52–90]	85 [69–96]	80 [64–94]	79 [68–92]
D2 urinary creatinine (mmol/24 h)	5.56 [4.67–6.57]	86 [71–100]	81 [65–96]	78 [65–94]	88 [75–100]

PPV positive predictive value, NPV negative predictive value, CI confidence interval

weaning is clearly reduced since diuretics often may be necessary to correct or avoid a fluid overload [33]. We sought then to determine predictive factors that would be independent of diuretics like urinary creatinine and urea. Urea and creatinine collected in urine during 24-h were significantly higher at the day of attempt of RRT weaning and the following 2 days (with a gradual increase) in the success group. By multivariate analysis, 24-h creatininuria was the most powerful predictor of success of weaning. A level ≥ 5.2 mmol/24 h had a Sp, Se, NPV and PPV of 75, 88, 82 and 84 %, respectively. Differences of creatinine urinary level observed between the two groups should not be related to muscle mass, as they were independent of patient's age and weight. Also, these differences may not be explained by differences of urea or creatinine generation rate since ratios of urinary levels to generation rates were significantly higher in the success group. Of note, clearance of creatinine (and urea) was significantly higher in the S_{+} group, as reported by Fröhlich et al. [25]. In a recent study, Anjort and colleagues [32] sought also to identify predictive factors of intermittent hemodialysis weaning by investigating retrospectively 67 AKI patients. They found that daily urinary urea was the best weaning marker with an optimal threshold >1.35 mmol/kg/24 h (AUC 0.96, 95 % CI 0.93–0.99) as compared to 24-h urine output. In the contrary of our findings, they did not observe any differences in urinary creatinine between weaned and unweaned patients. However, almost 1/3 of their patients (22/67) have a baseline GFR < 30 ml/mn and expectedly 26/67 patients did not recovered renal function. Our population included exclusively patients with a baseline GFR ≥ 60 ml/mn explaining, at least for a part, these discordant results.

RRT modalities (continuous or intermittent) may affect renal recovery and dialysis dependence, but their effects remain a matter of debate. A systematic review of the literature including mainly observational studies concluded

that patients who received intermittent RRT had a significant increased risk of dialysis dependency as compared to those who received continuous RRT [34]. We observed indeed a higher proportion of continuous therapies with a higher weight decrease in the success group. However, differences were not significant and our RRT strategy was based on hemodynamic precluding any conclusions from our study. It is noteworthy that two recent studies failed to demonstrate any impact of RRT modalities on renal recovery [35, 36].

Patients who require RRT for AKI have a mortality exceeding 60 %, but most patients that recover function enough to be free from RRT survive to hospital discharge [37]. In the study of BEST Kidney investigators [24], patients whose CRRT was successfully stopped had better outcome than those who needed to be re-treated (mortality: 28.5 vs 42.7 %, $p = <0.0001$, respectively). In our study, the patients who were weaned from RRT after a second or more attempt had a significantly higher length of RRT and of ICU stay as compared to patients successfully weaned. Moreover, we observed that 4/28 patients of the failed group deceased 3 months later and none in the success group. Whether failure of discontinuation of RRT is just a marker of severity of disease or is harmful by itself remains questioned [38].

This study has several limitations. First, it was a retrospective and bi-center cohort study. Second, the weaning of RRT was not based on standardized criteria but decided by the attending physician who obviously followed general rules. Third, daily urinary creatinine requires 24-h urine collection, a procedure routinely performed with accuracy in ICUs. The measurement of urinary creatinine in a shorter time period or as spot urine concentration would be more easily feasible but may induce less accuracy. Nevertheless, the use of urinary creatinine as a marker of RRT cessation should be internally and externally validated to be used in routine

practice. Last, we defined the attempt of weaning as a discontinuation of RRT during 72 h and estimated a success if discontinuation lasted more than 15 days. Various definitions have been used including an interruption of RRT during at least 5 days [23], but we thought that this duration may be too short regarding the severity of our patients. Also, considering RRT weaned after 7 days of interruption, as chosen by others [24, 25] has revealed insufficient. In the BEST Kidney cohort, for example, 15 patients considered as RRT-free were re-treated by CRRT before discharged from the ICU [24]. Indeed, Wu et al. [23] observed that an average of 10.1 ± 6.1 days lasted before re-dialysis if the attempt of weaning RRT failed.

Conclusions

In summary, the usefulness of 24-h urine output to predict the success of RRT weaning in AKI patients treated by diuretics may be significantly altered. Our study showed that 24-h urinary creatinine, in spite of diuretic use, is an independent and performing predictive factor of successful RRT weaning. A 24-h urinary creatinine ≥ 5.2 mmol indicates that RRT will be successfully stopped in 84 % of cases. Larger and prospective studies are needed to confirm our observations and to test a strategy of RRT weaning based on urine output, urinary creatinine and urea, and severity scores.

Abbreviations

AKI: acute kidney injury; AUC: area under the curve; CI: confidence interval; CrCl: creatinine clearance; CrGR: creatinine generation rate; CVVHDF: continuous venovenous hemodiafiltration; D0, D1, D2: day of renal replacement therapy weaning attempt and the following 2 days; eGFR: estimated glomerular filtration rate; ICU: intensive care unit; IHDF: intermittent hemodiafiltration; NPV: negative predictive value; OR: odds ratio; PPV: positive predictive value; ROC: receiver operating characteristic; RRT: renal replacement therapy; SAPS: Simplified Acute Physiology Score; Se: sensitivity; SLEDD-f: sustained low-efficiency daily dialysis-filtration; SOFA: Sequential Organ Failure Assessment; Sp: specificity; UCr: 24-h diuresis urinary creatinine; UrCl: urea clearance; UrGR: urea generation rate; UUr: 24-h diuresis urinary urea.

Authors' contributions

NV, VB and KK designed the study; NK did the statistical analysis; NV, VB and KK interpreted the data and wrote the manuscript; and NK, DD, NB, LP, AB, RL and OJ contributed to interpretation of data. All authors read and approved the final manuscript.

Author details

¹ Department of Intensive Care Medicine, Lapeyronie University Hospital, 371, Avenue du Doyen G. Giraud, 34295 Montpellier, France. ² Department of Biochemistry, Lapeyronie University Hospital, Montpellier, France. ³ PhyMedExp, INSERM U1046, CNRS UMR 9214, University of Montpellier, Montpellier, France.

Acknowledgements

None.

Competing interests

The authors declare that they have no competing interests.

References

- Uchino S, Kellum JA, Bellomo R, Doig GS, Morimatsu H, Morgera S, Schetz M, Tan I, Bouman C, Macedo E, Gibney N, Tolwani A, Ronco C. Acute renal failure in critically ill patients: a multinational, multicenter study. *JAMA*. 2005;294:813–8.
- Hoste EA, Schurgers M. Epidemiology of acute kidney injury: how big is the problem? *Crit Care Med*. 2008;36(Suppl 4):146–51.
- Metnitz PG, Krenn CG, Steltzer H, Lang T, Ploder J, Lenz K, Le Gall JR, Druml W. Effect of acute renal failure requiring renal replacement therapy on outcome in critically ill patients. *Crit Care Med*. 2002;30:2051–8.
- Andrikos E, Tseke P, Balafa O, Cruz DN, Tsinta A, Androulaki M, Pappas M, Ronco C. Epidemiology of acute renal failure in ICUs: a multi-center prospective study. *Blood Purif*. 2009;28:239–44.
- Mehta RL, Pascual MT, Sorokko S, Savage BR, Himmelfarb J, Ikizler TA, Paganini EP, Chertow GM. Spectrum of acute renal failure in the intensive care unit: the PICARD experience. *Kidney Int*. 2004;66:1613–21.
- Ympa YP, Sakr Y, Reinhart K, Vincent JL. Has mortality from acute renal failure decreased? A systematic review of the literature. *Am J Med*. 2005;118:827–32.
- Coca SG. Long-term outcomes of acute kidney injury. *Curr Opin Nephrol Hypertens*. 2010;19:266–72.
- Lafrance JP, Miller DR. Acute kidney injury associates with increased long-term mortality. *J Am Soc Nephrol*. 2010;21:345–52.
- Goldberg R, Dennen P. Long-term outcomes of acute kidney injury. *Adv Chronic Kidney Dis*. 2008;15:297–307.
- Wald R, Quinn RR, Luo J, Li P, Scales DC, Mamdani MM, Ray JG. Chronic dialysis and death among survivors of acute kidney injury requiring dialysis. *JAMA*. 2009;302:1179–85.
- Bagshaw SM, Mortis G, Godinez-Luna T, Doig CJ, Laupland KB. Renal recovery after severe acute renal failure. *Int J Artif Organs*. 2006;29:1023–30.
- Uchino S, Bellomo R, Kellum JA, Morimatsu H, Morgera S, Schetz MR, Tan I, Bouman C, Macedo E, Gibney N, Tolwani A, Oudemans-Van Straaten HM, Ronco C. Patient and kidney survival by dialysis modality in critically ill patients with acute kidney injury. *Int J Artif Organs*. 2007;30:281–92.
- Van Berendonck AM, Elseviers MM, Lins RL. Outcome of acute kidney injury with different treatment options: long-term follow-up. *Clin J Am Soc Nephrol*. 2010;5:1755–62.
- Delannoy B, Floccard B, Thiollere F, Kaaki M, Badet M, Rosselli S, Ber CE, Saez A, Flandreau G, Guérin C. Six-month outcome in acute kidney injury requiring renal replacement therapy in the ICU: a multicentre prospective study. *Intensive Care Med*. 2009;35:1907–15.
- Palevsky PM, Baldwin I, Davenport A, Goldstein S, Paganini E. Renal replacement therapy and the kidney: minimizing the impact of renal replacement therapy on recovery of acute renal failure. *Curr Opin Crit Care*. 2005;11:548–54.
- Elseviers MM, Lins RL, Van der Niepen P, Hoste E, Malbrain ML, Damas P, Devriendt J. Renal replacement therapy is an independent risk factor for mortality in critically ill patients with acute kidney injury. *Crit Care*. 2010;14:R221.
- Clec'h C, Darmon M, Lautrette A, Chemouni F, Azoulay E, Schwebel C, Dumenil AS, Garrouste-Orgeas M, Goldgran-Toledano D, Cohen Y, Timsit JF. Efficacy of renal replacement therapy in critically ill patients: a propensity analysis. *Crit Care*. 2012;16:R236.
- Bagshaw SM, Uchino S, Kellum JA, Morimatsu H, Morgera S, Schetz M, Tan I, Bouman C, Macedo E, Gibney N, Tolwani A, Oudemans-van Straaten HM, Ronco C, Bellomo R. Association between renal replacement therapy in critically ill patients with severe acute kidney injury and mortality. *J Crit Care*. 2013;28:1011–8.
- Schiff H. Renal recovery after severe acute renal injury. *Eur J Med Res*. 2008;13:552–6.
- Solez K, Morel-Maroger L, Sraer JD. The morphology of "acute tubular necrosis" in man: analysis of 57 renal biopsies and a comparison with the glycerol model. *Medicine (Baltimore)*. 1979;58:362–76.
- Liu KD, Brakeman PR. Renal repair and recovery. *Crit Care Med*. 2008;36(Suppl 4):187–92.
- Kidney Disease Improving Global Outcomes: Clinical practice guidelines for acute kidney injury. http://www.kdigo.org/clinical_practice_guidelines/pdf/KDIGO%20AKI%20Guideline.pdf (2012). Accessed 14 April 2016.
- Wu VC, Ko WJ, Chang HW, Chen YW, Lin YF, Shiao CC, Chen YM, Chen YS, Tsai PR, Hu FC, Wang JY, Lin YH, Wu KD. Risk factors of early redialysis after

weaning from postoperative acute renal replacement therapy. *Intensive Care Med.* 2008;34:101–8.

24. Uchino S, Bellomo R, Morimatsu H, Morgera S, Schetz M, Tan I, Bouman C, Macedo E, Gibney N, Tolwani A, Straaten HO, Ronco C, Kellum JA. Discontinuation of continuous renal replacement therapy: a post hoc analysis of a prospective multicenter observational study. *Crit Care Med.* 2009;37:2576–82.
25. Fröhlich S, Donnelly A, Solymos O, Conlon N. Use of 2-hour creatinine clearance to guide cessation of continuous renal replacement therapy. *J Crit Care.* 2012;27:744.
26. Heise D, Gries D, Moerer O, Bleckmann A, Quintel M. Predicting restoration of kidney function during CRRT-free intervals. *J Cardiothorac Surg.* 2012;7:6.
27. Klouche K, Amigues L, Serveaux-Delous M, Machado S, Delabre JP, Laydet E, Mauran P, Jonquet O, Canaud B. Implementing on-line hemodiafiltration as a renal replacement therapy for ICU acute renal failure: a single-center report of feasibility, safety and hemodynamic tolerance over a seven-year period. *Blood Purif.* 2012;34:10–7.
28. VA/NIH Acute Renal Failure Trial Network, Palevsky PM, Zhang JH, O'Connor TZ, Chertow GM, Crowley ST, Choudhury D, Finkel K, Kellum JA, Paganini E, Schein RM, Smith MW, Swanson KM, Thompson BT, Vijayan A, Watnick S, Star RA, Peduzzi P. Intensity of renal support in critically ill patients with acute kidney injury. *N Engl J Med.* 2008;359:7–20.
29. Levey AS, Stevens LA, Schmid CH, Zhang YL, Castro AF III, Feldman HI, Kusek JW, Eggers P, Van Lente F, Greene T, Coresh J. A new equation to estimate glomerular filtration rate. *Ann Intern Med.* 2009;150:604–12.
30. Esteban A, Frutos F, Tobin MJ, Alía I, Solsona JF, Valverdú I, Fernández R, de la Cal MA, Benito S, Tomás R, Carriedo D, Macías S, Blanco J, for the Spanish Lung Failure Collaborative Group. A comparison of four methods of weaning patients from mechanical ventilation. *N Engl J Med.* 1995;332:345–50.
31. Bouman CS, Oudemans-Van Straaten HM, Tijssen JG, Zandstra DF, Kesecioglu J. Effects of early high-volume continuous venovenous hemofiltration on survival and recovery of renal function in intensive care patients with acute renal failure: a prospective, randomized trial. *Crit Care Med.* 2002;30:2205–11.
32. Aniot J, Ait Hssain A, Pereira B, Coupez E, Pioche PA, Leroy C, Heng AE, Souweine B, Lautrette A. Daily urinary urea excretion to guide intermittent hemodialysis weaning in critically ill patients. *Crit Care.* 2016;20:43.
33. Bouchard J, Soroko SB, Chertow GM, et al. Fluid accumulation, survival and recovery of kidney function in critically ill patients with acute kidney injury. *Kidney Int.* 2009;76:422–7.
34. Antoine G, Schneider AG, RinaldoBellomo R, Sean M, Bagshaw SM, Neil J, Glassford NJ, Lo S, Jun M, Cass A, Gallagher M. Choice of renal replacement therapy modality and dialysis dependence after acute kidney injury: a systematic review and meta-analysis. *Intensive Care Med.* 2013;39:987–97.
35. Truche AS, Darmon M, Bailly S, et al. Continuous renal replacement therapy versus intermittent hemodialysis in intensive care patients: impact on mortality and renal recovery. *Intensive Care Med.* 2016. doi:[10.1007/s00134-016-4404-6](https://doi.org/10.1007/s00134-016-4404-6).
36. Liang KV, Sileanu FE, Clermont G, Murugan R, Pike F, Palevsky PM, Kellum JA. Modality of RRT and recovery of kidney function after AKI in patients surviving to hospital discharge. *Clin J Am Soc Nephrol.* 2016;11:30–8.
37. Uchino S. The epidemiology of acute renal failure in the world. *Curr Opin Crit Care.* 2006;12:538–43.
38. Bell M, Granath F, Schön S, Ekblom A, Martling CR. Continuous renal replacement therapy is associated with less chronic renal failure than intermittent haemodialysis after acute renal failure. *Intensive Care Med.* 2007;33:773–80.