



**HAL**  
open science

## Novel genes and mutations in patients affected by recurrent pregnancy loss

Paul Quintero-Ronderos, Eric Mercier, Michiko Fukuda, Ronald González, Carlos Fernando Suárez, Manuel Alfonso Patarroyo, Daniel Vaiman, Jean-Christophe Gris, Paul Laissue

### ► To cite this version:

Paul Quintero-Ronderos, Eric Mercier, Michiko Fukuda, Ronald González, Carlos Fernando Suárez, et al.. Novel genes and mutations in patients affected by recurrent pregnancy loss. PLoS ONE, 2017, 12 (10), pp.e0186149. 10.1371/journal.pone.0186149 . hal-01801113

HAL Id: hal-01801113

<https://hal.umontpellier.fr/hal-01801113>

Submitted on 25 May 2021

**HAL** is a multi-disciplinary open access archive for the deposit and dissemination of scientific research documents, whether they are published or not. The documents may come from teaching and research institutions in France or abroad, or from public or private research centers.

L'archive ouverte pluridisciplinaire **HAL**, est destinée au dépôt et à la diffusion de documents scientifiques de niveau recherche, publiés ou non, émanant des établissements d'enseignement et de recherche français ou étrangers, des laboratoires publics ou privés.



Distributed under a Creative Commons Attribution 4.0 International License

RESEARCH ARTICLE

# Novel genes and mutations in patients affected by recurrent pregnancy loss

Paula Quintero-Ronderos<sup>1</sup>, Eric Mercier<sup>2</sup>, Michiko Fukuda<sup>3</sup>, Ronald González<sup>4</sup>, Carlos Fernando Suárez<sup>4,5,6</sup>, Manuel Alfonso Patarroyo<sup>4,6</sup>, Daniel Vaiman<sup>7,8</sup>, Jean-Christophe Gris<sup>2</sup>, Paul Laissue<sup>1\*</sup>

**1** Center For Research in Genetics and Genomics-CIGGUR. GENIUIROS Research Group. School of Medicine and Health Sciences, Universidad del Rosario. Bogotá, Colombia, **2** Department of Haematology, University Hospital, Nîmes. Faculty of Pharmacy and Biological Sciences and Research Team EA 2992, University of Montpellier, Montpellier, France, **3** Laboratory for Drug Discovery. National Institute of Advanced Industrial Science and Technology (AIST). Tsukuba city, Ibaraki, Japan, **4** Fundación Instituto de Inmunología de Colombia (FIDIC), Bogotá D.C., Colombia, **5** Universidad de Ciencias Aplicadas y Ambientales (UDCA), Bogotá D.C., Colombia, **6** Basic Sciences Department, School of Medicine and Health Sciences, Universidad del Rosario, Bogotá D.C., Colombia, **7** Institut Cochin, Université Paris Descartes, CNRS (UMR 8104), Paris, France, **8** Inserm, U1016, Paris, France

\* [paul.laissue@urosario.edu.co](mailto:paul.laissue@urosario.edu.co)



**OPEN ACCESS**

**Citation:** Quintero-Ronderos P, Mercier E, Fukuda M, González R, Suárez CF, Patarroyo MA, et al. (2017) Novel genes and mutations in patients affected by recurrent pregnancy loss. PLoS ONE 12 (10): e0186149. <https://doi.org/10.1371/journal.pone.0186149>

**Editor:** Obul Reddy Bandapalli, German Cancer Research Center (DKFZ), GERMANY

**Received:** May 27, 2017

**Accepted:** September 26, 2017

**Published:** October 10, 2017

**Copyright:** © 2017 Quintero-Ronderos et al. This is an open access article distributed under the terms of the [Creative Commons Attribution License](https://creativecommons.org/licenses/by/4.0/), which permits unrestricted use, distribution, and reproduction in any medium, provided the original author and source are credited.

**Data Availability Statement:** NGS data are available at the NIH Short Read Archive repository (<https://www.ncbi.nlm.nih.gov/sra>) (BioProject accession number: PRJNA325830; Short Read Archive- SRA accession number: SRP114508).

**Funding:** The work of Laissue's lab is supported by the Universidad del Rosario (grant: CS/ABN062/ GENIUIROS 017).

**Competing interests:** The authors have declared that no competing interests exist.

## Abstract

Recurrent pregnancy loss is a frequently occurring human infertility-related disease affecting ~1% of women. It has been estimated that the cause remains unexplained in >50% cases which strongly suggests that genetic factors may contribute towards the phenotype. Concerning its molecular aetiology numerous studies have had limited success in identifying the disease's genetic causes. This might have been due to the fact that hundreds of genes are involved in each physiological step necessary for guaranteeing reproductive success in mammals. In such scenario, next generation sequencing provides a potentially interesting tool for research into recurrent pregnancy loss causative mutations.

The present study involved whole-exome sequencing and an innovative bioinformatics analysis, for the first time, in 49 unrelated women affected by recurrent pregnancy loss. We identified 27 coding variants (22 genes) potentially related to the phenotype (41% of patients). The affected genes, which were enriched by potentially deleterious sequence variants, belonged to distinct molecular cascades playing key roles in implantation/pregnancy biology.

Using a quantum chemical approach method we established that mutations in MMP-10 and FGA proteins led to substantial energetic modifications suggesting an impact on their functions and/or stability.

The next generation sequencing and bioinformatics approaches presented here represent an efficient way to find mutations, having potentially moderate/strong functional effects, associated with recurrent pregnancy loss aetiology. We consider that some of these variants (and genes) represent probable future biomarkers for recurrent pregnancy loss.

## Introduction

Recurrent pregnancy loss (RPL), defined as at least two/three pregnancy losses before the 20<sup>th</sup> week of gestation, is a frequently occurring human infertility-related disease affecting ~0.8% to 1.4% of women in the general population [1] (and references therein). Several aetiologies and conditions have been associated with RPL, such as parental and embryo chromosomal abnormalities, prothrombotic states, uterine structural diseases, endocrinological dysfunctions, infections and immunological factors [2]. However, despite significant advances in the clinical and biochemical diagnosis of human infertility, it has been estimated that the cause remains unexplained in 35% to 60% of RPL women, thereby strongly suggesting that genetic, epigenetic and environmental factors may contribute towards the RPL phenotype [2,3].

Concerning the molecular aetiology of RPL, several studies have had limited success in identifying the disease's genetic causes. Numerous genes (e.g. *AMN*, *THBD*, *PROCR*, *VEGF*, *TP53*, *NOS3*, *JAK2*) coding regions have been studied, in a significant number of patients, but causative mutations have rarely been described [4–7] (and references therein). Due to the natural molecular complexity of each physiological step necessary for guaranteeing reproductive success in mammals accurately targeting of the genomic regions responsible for complex traits has been challenging. Indeed, it has been shown that oocyte fecundation in mammals, as well as embryo pre-implantation, implantation and early post-implantation molecular pathways are controlled by hundreds of molecules which are finely regulated in terms of gene expression [8–11].

It has been particularly difficult to determine a priority strategy in such scenario for selecting coherent RPL candidate genes for direct sequencing. Alternative approaches, such as genome-wide association studies (GWAS) and quantitative trait loci (QTL) mapping, have been proposed for mapping loci related to the disease's aetiology. GWAS, extensively used during the past ten years for locating chromosomal regions and SNPs associated with frequent diseases, has also been used in RPL research but it has not led to report consistent molecular markers of the disease [12–14]. Some studies using a particular congenic mouse model (the interspecific recombinant congenic strains-IRCS model), leading to QTL identification, have reported small chromosomal loci containing a limited number of candidate genes related to embryonic resorption, a phenotype analogous to human RPL [15–18]. More recently, a functional association between *FOXD1* mutations and RPL has been described [19].

In such scenario, next generation sequencing (NGS) provides a potentially interesting tool for research into RPL causative mutations. At present, NGS is a reliable technique allowing simultaneous analysis of large genomic regions in numerous patients with affordable costs.

The present study thus involved whole-exome sequencing, for the first time, in unrelated women affected by RPL. Innovative bioinformatics analysis was mainly based on studying non-synonymous sequence variants in a subset of 234 RPL candidate genes.

27 coding variants in 22 genes potentially related to the phenotype were identified in 20 out of 49 patients (41%). Using a quantum chemical approach method, we established that mutations in *MMP-10* and *FGA* led to substantial energetic modifications suggesting an impact on protein function and/or stability. The NGS and bioinformatics approaches presented here represent an efficient way to find mutations, having potentially moderate/strong functional effects, associated with RPL aetiology. We consider that some of these variants (and genes) represent potential future biomarkers for RPL.

## Materials and methods

### Women affected by RPL

Forty-three Caucasian RPL-affected patients (Pt-1 through Pt-43) formed part of a previously-established group (the Nimes Obstetricians and Haematologists patient cohort) of women suffering pregnancy loss [20]. Six additional Caucasian RPL patients (Pt-44 through Pt-49) attended the Rosario University's Genetics and Genomics Centre (Bogotá, Colombia). All patients displayed idiopathic RPL. They presented normal karyotypes and did not display uterine malformations, antecedents of autoimmune, coagulation and/or metabolic disorders. All cases lack familial antecedents of RPL. RPL women did not reported history of consanguinity. Patients' average age was 34 years old. Patients had experienced 2 to 7 primary idiopathic pregnancy losses prior to the 20<sup>th</sup> week of gestation. Miscarriages occurring before 10 weeks of gestation were considered embryonic (EL) while those recorded after such gestation age were classified as foetal (FL). 40 women (82%) had suffered EL and 6 FL (12%). Three patients had suffered both EL and FL (6%). [S1 Table](#) summarises the RPL group's clinical characteristics. All this study's clinical and experimental steps were approved by the Institutional Ethics Committee of the Universidad del Rosario (Bogotá, Colombia) and the University of Montpellier (France) (number: ABN026-000155). The clinical investigation was performed according to the Helsinki Declaration of 1975, as revised in 1996. All the women had given their informed consent to participate.

### NGS, Sanger sequencing and bioinformatics analysis

Total DNA was extracted from patients' blood leucocytes by conventional salting-out procedure. Experimental details of library preparation, sequencing and bioinformatics analysis have been included as [S1 Methods](#). [S2 Table](#) includes the subset of 234 RPL (RPL-234) candidate genes used for bioinformatics analysis. The [S1 Fig](#) describes the methodological pipeline for creating the 234-RPL subset.

### Structure preparation/modelling and Fragment Molecular Orbital (FMO) calculations

Experimental details of protein structural analysis have been included as [S1 Methods](#).

### Statistical analyses

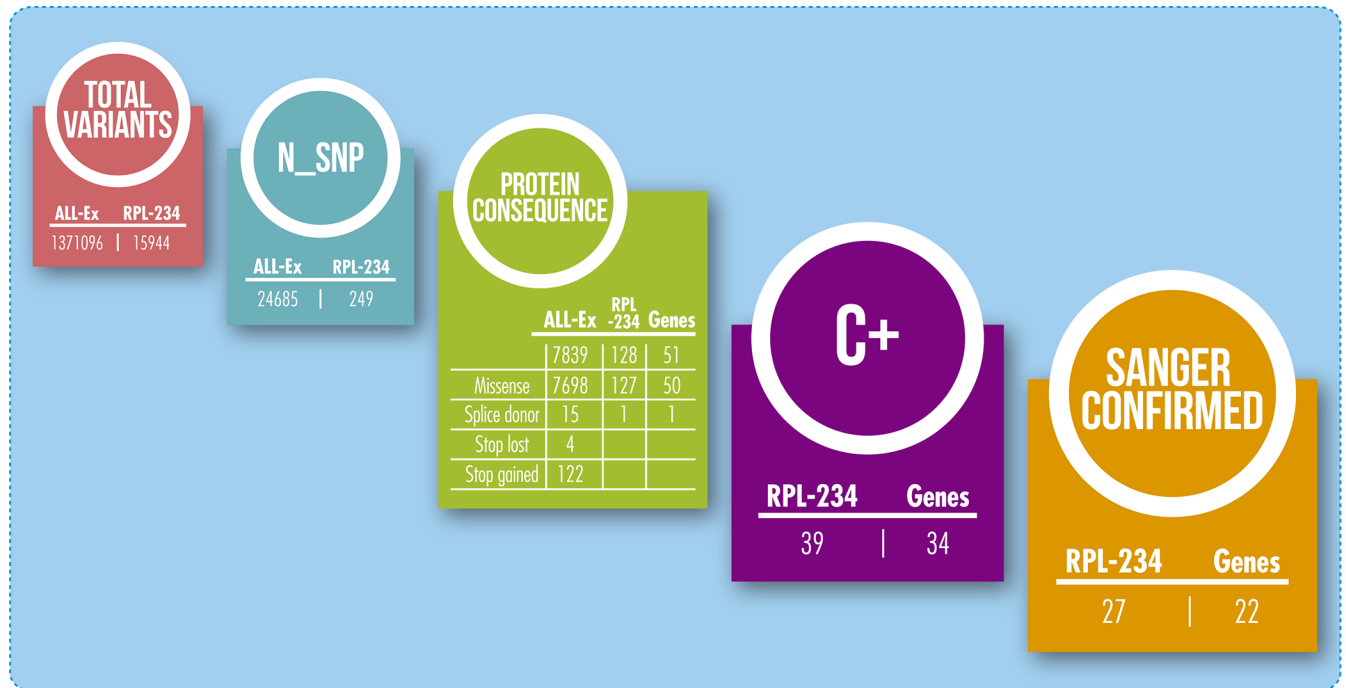
Comparisons between the RPL-234 subset of genes and the rest of the genome were performed using a contingency  $\chi^2$  test.

## Results

### Sequencing and bioinformatics analysis

All samples' alignment ranged from 85%–98%. Almost 98% of the target at 1X depth was covered for all samples and more than 85% of the target was covered at 30X depth. Exome data was uploaded to the NIH Short Read Archive repository (<https://www.ncbi.nlm.nih.gov/sra>) (BioProject accession number: PRJNA325830; Short Read Archive- SRA accession number: SRP114508).

RPL-234 data analysis revealed 15944 sequence variants ([Fig 1](#)). 249 of these were novel (24685 when all the genes/exons were considered throughout the genome). One splice-site variant was found which was not confirmed by direct sequencing (false positive). Among novel RPL-234, 128 variants (51%) induced a protein change while 7839 (31.7%) affected the rest of



**Fig 1. Bioinformatics filtering of exome sequencing data.** All-ex: Complete exome sequencing data excluding RPL-234 results. RPL-234: group of RPL candidate genes. C+: sequence variants involving residues strictly conserved during evolution.

<https://doi.org/10.1371/journal.pone.0186149.g001>

the genome (All-Ex). The statistical comparative analysis of these proportions revealed that the RPL-234 list is strongly enriched by this kind of variants (128 variants observed with 99 expected,  $p = 0.0005$ ).

One hundred and twenty-seven heterozygous missense mutations were detected; 39 of them had led to changes in residues which had been conserved during evolution (C+). Twenty-seven C+ variants, affecting 20 patients, were positively verified via Sanger sequencing and considered strong candidates related to RPL molecular aetiology (Fig 1, Table 1). Sixteen (80%) out of 20 RPL patients carrying aetiological candidate mutations were affected by EL while 10% (2/20) displayed FL. The rest of patients (10%) was affected by EL and FL.

Score values of potential deleterious effects calculated by 4 computational prediction programs are summarized in Table 2.

It is worth mentioning that mutations identified in F5 had originally been reported by our bioinformatics analysis as F5 p.Glu1540Ala and F5 p.Thr1978Pro (compared to the F5 NP\_000121.2 sequence). However, most studies published to date have reported F5 amino acid positions following the original description by Jenny et al., in which signal peptide residues (Met<sup>1</sup> through Ala<sup>28</sup>) are not considered for consecutive numbering. The first amino acid (+1) in their sequence is Ala<sup>29</sup> [21]. We have thus used the numbering reported by Jenny et al., in the present study to enable comparing our results with other studies. F5 p.Glu1540Ala and F5 p.Thr1978Pro mutations (NP\_000121.2 sequence) in the present work have thus been described as F5 p.Glu1512Ala and F5 p.Thr1950Pro, respectively.

### Fragment Molecular Orbital (FMO) analysis

The FMO method was used for studying FGA (fibrinogen alpha chain) (Fig 2) and MMP-10 (matrix metalloproteinase 10) (Fig 3) WT and MT structures regarding the effect of amino acid

**Table 1. Sequence variants identified in RPL patients.**

Patient ID	Gene	Mutation		Biological process
		CDS position	Protein position	
Pt-37	<i>TRO</i>	c.2909G>A	p.Gly970Asp	Cell adhesion-trophoblast endometrium interaction
Pt-39	<i>CDH11</i>	c.1355C>G	p.Ala452Gly	
Pt-20	<i>CDH1</i>	c.164T>G	p.Val55Gly	
Pt-46	<i>THBD</i>	c.457T>G	p.Trp153Gly	Coagulation
Pt-22	<i>F5</i>	c.4619A>C	p.Glu1540Ala (p.Glu1512Ala)	
Pt-22	<i>F5</i>	c.5932A>C	p.Thr1978Pro (p.Thr1950Pro)	
Pt-16	<i>FGA</i>	c.2054T>G	p.Phe685Cys	Extracellular matrix remodeling
Pt-45	<i>MMP10</i>	c.595G>A	p. Asp199Asn	
Pt-26	<i>MMP9</i>	c.17C>T	p.Pro6Leu	
Pt-28	<i>COL6A3</i>	c.6859C>T	p.Arg2287Trp	
Pt-29	<i>ADAMTS1</i>	c.2068G>C	p.Val690Leu	
Pt-45	<i>TNC</i>	c.4063G>A	p.Val1355Met	
Pt-35	<i>FLT1</i>	c.953C>T	p.Ser318Leu	Angiogenesis
Pt-31	<i>FLT1</i>	c.2435G>A	p. Arg812Gln	
Pt-5	<i>EPAS1</i>	c.1510C>G	p.Leu504Val	
Pt-11 / Pt-17	<i>EPAS1</i>	c.1463A>G	p.Tyr488Cys	Cell proliferation, differentiation, migration, apoptosis
Pt-4	<i>LIFR</i>	c.2338C>T	p.Arg780Cys	
Pt-36	<i>FGFR2</i>	c.1088C>T	p.Ala363Val	
Pt-19	<i>BMP7</i>	c.448C>T	p.Arg150Cys	Metabolism
Pt-19	<i>AMN</i>	c.207G>A	p.Met69Ile	
Pt-5	<i>IDO2</i>	c.539T>G	p.Phe180Cys	Immunological function modulation
Pt-48	<i>IDO2</i>	c.749T>C	p.Phe250Ser	
Pt-26	<i>CR1</i>	c.4501A>G	p.Thr1501Ala	
Pt-28	<i>TLR3</i>	c.2384C>T	p.Ala795Val	
Pt-20	<i>TRAF3IP1</i>	c.415C>T	p.Arg139Trp	
Pt-14	<i>NCOA1</i>	c.2011T>G	p.Ser671Ala	Steroid nuclear receptors activation

<https://doi.org/10.1371/journal.pone.0186149.t001>

substitutions. We have selected these proteins for structural analysis because regions carrying putative deleterious mutations were previously crystallized. We have found significant changes in protein stability secondary to FGA- p.Phe685Cys and MMP10-p.Asp199Asn mutations, which strongly suggest a deleterious effect leading to RPL.

Figs 2A and 3A show the calculated values for FGA and MMP-10 models, respectively. Detailed information on results from FMO analysis has been included as S1 Results.

## Discussion

The present work involved whole-exome sequencing in 49 non-related patients affected by RPL. To increase the chances to find potential RPL causative mutations our attention was focused on a subset of 234 candidate genes (RPL-234). The list included genes participating in molecular cascades involved in the distinct stages of pregnancy (S2 Table). Since our patients were unrelated, stringent filters (e.g. novel, non-synonymous, C+) were used in putative aetiological mutation research, enabling the selection of rare variants having (hypothetically) moderate/strong functional effects. This approach led us to identify 39 heterozygous sequence variants, 27 of which (affecting 22 genes) were definitely validated by Sanger sequencing (Table 1, Fig 1). These variants affected 41% of patients, thereby highlighting the fact that



Table 2. Pathogenicity predictions.

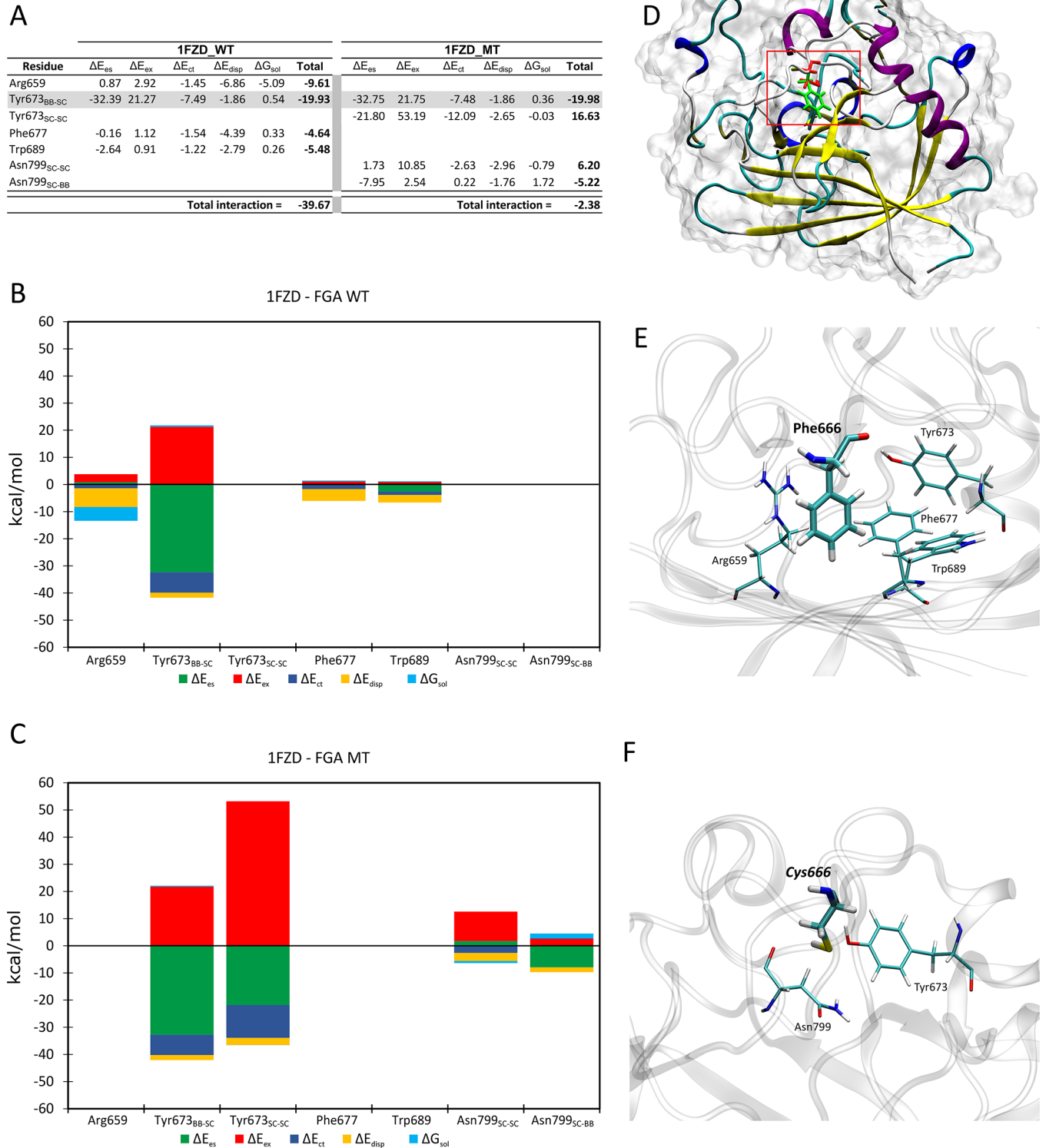
Gene	Protein position	SIFT	Polyphen	Mutation taster			Mutpred	Total
				PhyloP	PhastCons	Prediction		
TRO	p.Gly970Asp	Tolerated (0.07)	Probably damaging (0.999)	1.224	0.019	Polymorphism	0.379	1/4
CDH11	p.Ala452Gly	Tolerated (0.38)	Benign (0.197)	3.39	0.999	Disease causing	0.322	1/4
CDH1	p.Val55Gly	Deleterious (0)	Probably damaging (1)	3.938	1	Disease causing	0.821	4/4
THBD	p.Trp153Gly	Deleterious (0)	Probably damaging (0.976)	3.847	0.987	Disease causing	0.716	4/4
F5	p.Thr1978Pro	Deleterious (0)	Benign (0.388)	3.052	1	Disease causing	0.889	3/4
	p.Glu1540Ala	Deleterious (0.02)	Benign (0.185)	2.084	0.221	Polymorphism	0.455	1/4
FGA	p.Phe685Cys	Deleterious (0)	Probably damaging (1)	5.158	1	Disease causing	0.960	4/4
MMP10	p. Asp199Asn	Deleterious (0)	Probably damaging (0.992)	5.238	1	Disease causing	0.711	4/4
MMP9	p.Pro6Leu	Tolerated (0.4)	Possibly damaging (0.824)	0.878	0.366	Polymorphism	0.461	1/4
COL6A3	p.Arg2287Trp	Deleterious (0.02)	Probably damaging (0.985)	1.479	0.003	Polymorphism	0.517	3/4
ADAMTS1	p.Val690Leu	Tolerated (0.1)	Benign (0.113)	4.077	1	Disease causing	0.547	2/4
TNC	p.Val1355Met	Tolerated (0.06)	Benign (0.316)	1.239	0.843	Disease causing	0.674	2/4
FLT1	p.Ser318Leu	Tolerated (0.16)	Possibly damaging (0.794)	2.463	0.019	Polymorphism	0.472	1/4
	p.Arg812Gln	Tolerated (0.16)	Benign (0.407)	6.18	1	Disease causing	0.334	1/4
EPAS1	p.Tyr488Cys	Tolerated (0.08)	Possibly damaging (0.687)	3.174	1	Disease causing	0.254	2/4
	p.Leu504Val	Deleterious (0)	Probably damaging (0.979)	5.684	1	Disease causing	0.456	3/4
LIFR	p.Arg780Cys	Tolerated (0.07)	Possibly damaging (0.542)	1.265	0.899	Polymorphism	0.577	2/4
FGFR2	p.Ala363Val	Tolerated (0.34)	Possibly damaging (0.492)	4.295	1	Disease causing	0.258	2/4
BMP7	p.Arg150Cys	Deleterious (0)	Probably damaging (0.952)	2.863	0.998	Disease causing	0.658	4/4
AMN	p.Met69Ile	Tolerated (0.05)	Benign (0.016)	2.147	0.98	Disease causing	0.614	2/4
IDO2	p.Phe180Cys	Deleterious (0)	Probably damaging (1)	3.591	0.978	Disease causing	0.936	4/4
	p.Phe250Ser	Deleterious (0)	Probably damaging (0.994)	2.707	1	Disease causing	0.795	4/4
CR1	p.Thr1501Ala	Tolerated (0.3)	Benign (0.076)	-0.206	0	Polymorphism	0.540	1/4
TLR3	p.Ala795Val	Tolerated (0.14)	Probably damaging (0.961)	4.188	1	Disease causing	0.716	3/4
TRAF3IP1	p.Arg139Trp	Tolerated (0.07)	Probably damaging (0.928)	0.261	0.006	Polymorphism	0.603	2/4
NCOA1	p.Ser671Ala	Tolerated (0.64)	Benign (0.041)	0.447	0.997	Polymorphism	0.270	0/4

<https://doi.org/10.1371/journal.pone.0186149.t002>

NGS is an efficient tool for screening the genetic causes of complex reproductive disorders. Our statistical analysis revealed that the RPL-234 subgroup of genes was enriched ( $p = 0.0005$ ) by variants underlying potential functional effects (mutations leading to protein sequence alteration). These findings corroborated that the analysis of a well selected group of genes might be a powerful approach for dissecting complex diseases' molecular aetiology (see below). In a recent work Fonseca et al. reported using of custom target sequencing microarrays, in unrelated patients affected by premature ovarian failure, for identifying the genetic origin of this disorder [22]. In that study, which was performed on 70 candidate genes, 25% of patients presented potential deleterious mutations.

The present study determined that genes carrying C+ mutations were involved in the following biological processes: cell adhesion (e.g. trophoblast/ endometrium interaction), coagulation, angiogenesis, immunological function response/modulation, metabolism (e.g. B12 vitamin), extracellular matrix remodelling, steroidal nuclear receptor activation and specific cell function regulation (proliferation, differentiation, migration and apoptosis) (Table 1).

Concerning cell adhesion molecules, TRO (trophinin) holds particular interest since it has been demonstrated to perform key functions during embryo implantation [23,24] (and references therein). Pt-37 displayed the TRO p.Gly970Asp mutation in our present study which affected an evolutionary conserved amino acid located in the decapeptide tandem repeat domain. Due to natural



**Fig 2. FMO results for FGA WT vs. MT. (A)** Pair interaction decomposition analysis (PIEDA) contributions of amino acids interacting with position 199. Conserved interactions between WT and MT are shadowed in gray (energies are expressed in kcal/mol). **(B) WT and (C) MT.** Bar plots describe the PIEDA of energy interaction terms: electrostatics (green), exchange-repulsion (red), charge-transfer (blue), dispersion (yellow), and solvation (cyan). Positive values are considered destabilising and negative stabilising. **(D)** Overall view of the analysed system. In the red box a detail of the mutation zone. **(E)** Detail of the amino acids interacting with Phe666 in FGA WT. **(F)** Detail of the amino acids interacting with Cys666 in



FGA WT. The phenylalanine mutated residue located at position 685 corresponds, into the crystallographic structure, to the amino acid located at position 666. Therefore, for FMO approach we have used Phe666 instead Phe685.

<https://doi.org/10.1371/journal.pone.0186149.g002>

physicochemical differences between Gly and Asp residues, the p.Gly970Asp mutation might modify the protein's local or global properties (e.g. folding and binding) which might perturb tasin/trophinin/bystin complex formation leading to embryo implantation disturbances and RPL. NGS and filtering analysis led to identifying four mutations in three genes involved in coagulation molecular pathways: coagulation factor V-*F5* c.4619A>C (p.Glu1512Ala), *F5* c.5932A>C (p. Thr1950Pro), thrombomodulin-*THBD* c.457T>G (p.Trp153Gly) and fibrinogen alpha chain-*FGA* c.2054T>G (p.Phe685Cys).

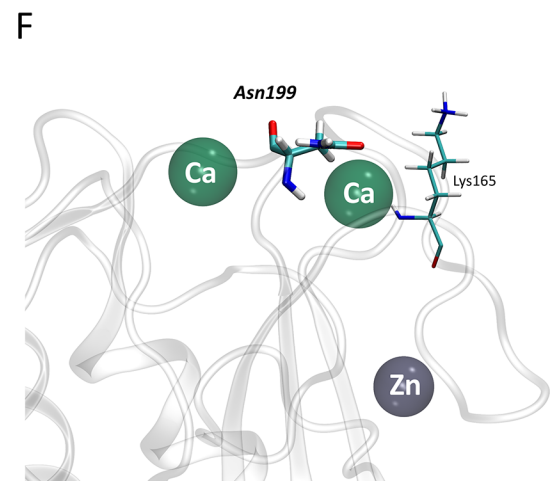
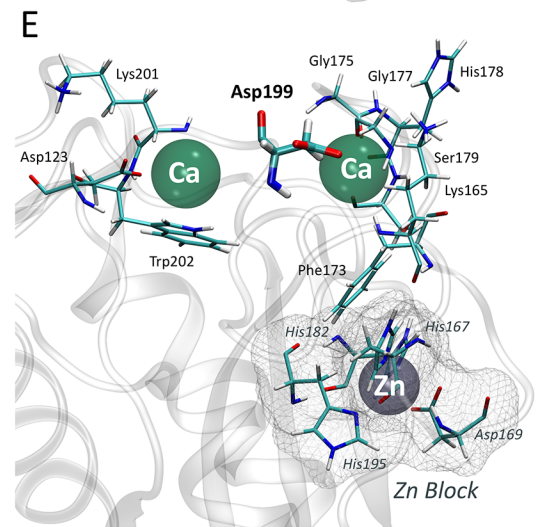
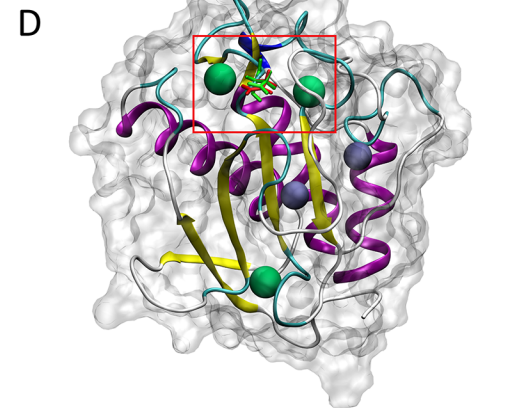
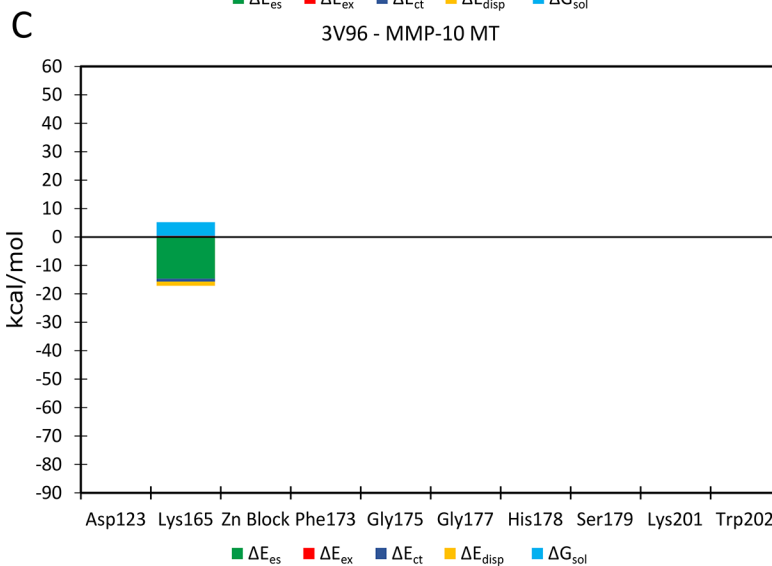
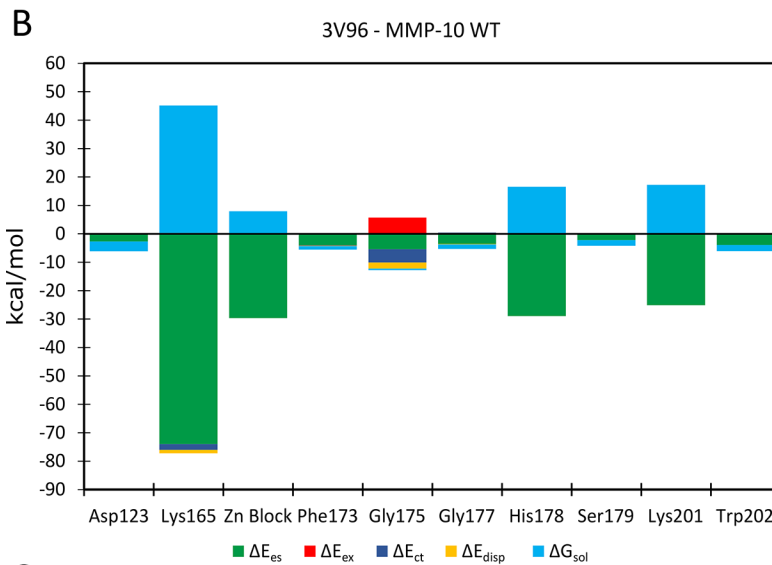
Although controversial results have been published to date regarding F5 and RPL origin, it can be considered a coherent candidate due to its inherent function during coagulation [25,26] (and references therein). The F5-p.Glu1512Ala mutation (Pt-22) is located in the B protein domain which encompasses amino acids Ser<sup>710</sup>-Arg<sup>1545</sup> [27] (considerations regarding F5 residue numbering have been included in the results section). It has been shown that the residue Arg<sup>1545</sup> has a large impact on F5-F10 interaction which is necessary for generating fully-activated F5, probably during late coagulation stages (e.g. when thrombin levels are still low) [27,28]. Furthermore, the B domain contains an acidic region (AR) between the Thr<sup>1493</sup> and Asp<sup>1537</sup> residues interacting with a basic region to keep F5 as an inactive form (procofactor) [29]. It has been shown that the Asp<sup>1508</sup>-Tyr<sup>1515</sup> region is necessary for procofactor cleavage by thrombin and light chain formation [30]. It can thus be assumed that the C-terminal region of the B domain (e.g. AR and Arg<sup>1545</sup>) is crucial for protein activation/inactivation and guaranteeing proper equilibrium between F5 procoagulant and anticoagulant properties in normal conditions. The second mutation, also carried by Pt-22, which we have identified in F5 (p. Thr1950Pro), is located in the protein's C1 domain near to functionally-relevant amino acids (Tyr<sup>1956</sup>, Leu<sup>1957</sup>) necessary for prothrombinase complex (PC) assembly on phosphatidylserine membranes and thrombin production regulation [31]. The p.Thr1950Pro mutation could interfere with normal PC function, leading to changes in thrombin bioavailability and coagulation imbalance. As already described for further F5 missense mutations, p.Glu1512Ala and p. Thr1950Pro might also be related to abnormal cytoplasmic retention, thereby contributing towards the phenotype [27].

THBD is a cell plasma membrane glycoprotein which is mainly expressed in blood vessels and placental syncytiotrophoblast participating in distinct biological processes, such as coagulation, complement activation, fibrinolysis, inflammation and cell proliferation [32–34]. THBD has been described as an anticoagulant factor by enhancing protein C activation and decreasing thrombin specificity [35]. Mice lacking *Thbd* die secondary to developmental failure of placenta associated with abnormal activation of blood coagulation cascade at the foetal-maternal interface [36,37]. The THBD-p.Trp153Gly mutation that we have identified in Pt-46 is located at the end of the C-type lectin-like module (the protein's N-terminal region) which has mainly been linked with anti-inflammatory activity and cell adhesion [33] (and references therein). The THBD-p. Trp153Gly mutant protein might therefore contribute to placental endothelial dysfunction and/or coagulation imbalance.

FGA encodes the fibrinogen alpha subunit, a glycoprotein having several functions during coagulation physiology, such as fibrin clot formation, non-substrate thrombin binding, platelet aggregation and fibrinolysis. *FGA* mutations, especially drastic biallelic variants, have been associated with afibrinogenemia, a rare bleeding disorder [38,39]. *FGA* heterozygous missense mutations have been identified in patients affected by dysfibrinogenemia, a blood disorder having an unpredictable clinical phenotype due to abnormal fibrinogen quality [39,40].

**A**

Residue	3V96_WT					Total	3V96_MT					Total
	$\Delta E_{es}$	$\Delta E_{ex}$	$\Delta E_{ct}$	$\Delta E_{disp}$	$\Delta G_{sol}$		$\Delta E_{es}$	$\Delta E_{ex}$	$\Delta E_{ct}$	$\Delta E_{disp}$	$\Delta G_{sol}$	
Asp123	-2.75	0.00	0.00	0.00	-3.43	-6.18						
Lys165	-74.01	0.26	-2.03	-1.20	44.87	-32.12	-14.66	0.38	-1.03	-1.48	4.82	-11.98
Zn Block	-29.68	0.00	0.00	0.00	7.90	-21.78						
Phe173	-4.11	0.00	-0.16	-0.12	-1.20	-5.59						
Gly175	-5.46	5.68	-4.69	-2.15	-0.53	-7.14						
Gly177	-3.62	0.06	0.34	-0.15	-1.56	-4.92						
His178	-28.97	0.00	0.00	0.00	16.54	-12.44						
Ser179	-2.27	0.00	0.00	0.00	-1.96	-4.22						
Lys201	-25.15	0.00	0.00	0.00	17.21	-7.94						
Trp202	-3.93	0.00	0.00	0.00	-2.18	-6.11						
<b>Total interaction = -108.45</b>							<b>Total interaction = -11.98</b>					



**Fig 3. FMO results for MMP-10 WT vs. MT. (A)** PIEDA contributions of amino acids interacting with position 199, conserved interactions between WT and MT are shadowed in gray (energies are expressed in kcal/mol). **(B) WT and (C) MT.** Bar plots describe the PIEDA of energy interaction terms: electrostatics (green), exchange-repulsion (red), charge-transfer (blue), dispersion (yellow), and solvation (cyan). Positive values are considered destabilising and negative stabilizing. **(D)** Overall view of the analysed system. In the red box, a detail of the mutation zone. **(E)** Detail of the amino acids and ions interacting with the Asp199 in MMP-10 WT. **(F)** Detail of the amino acids and ions interacting with the Asn199 in MMP-10.

<https://doi.org/10.1371/journal.pone.0186149.g003>

Similarly to the variants described above affecting coagulation physiology, FGA-p.Phe685Cys mutation in Pt-16 may affect protein folding, thus leading to functional disturbances. In this case, substituting a phenylalanine for a cysteine in position 685 implies a particularly drastic change in terms of physicochemical properties.

Regarding the FMO analysis, it is important to note that we used FGA and MMP-10 proteins for structural analysis because previous studies of the affected regions (based on crystallization assays) revealed reliable/exploitable data. The FGA modelled mutation (Phe to Cys in position 666) involved changes in stabilising interactions (Fig 2). The mutation resulted in a major change in total interaction energy from -39.67 (WT) to -2.38 (MT) kcal/mol (almost 20-fold). The loss of three non-classical H-bonds (CH- $\pi$  interactions) contributed to FGA MT protein destabilisation.

Similarly, further analyses revealed changes of one order of magnitude concerning stabilising interactions between wild-type (MMP-10 WT) and mutant (MMP-10 MT) forms of matrix metalloproteinase 10 (MMP-10) in total interaction energies (-108.45 kcal/mol WT vs. -11.98 kcal/mol MT). MMP-10 Asn199 MT lost all but one stabilising interaction, including strong interactions, such as a salt bridge (Lys165) and the block containing structural Zn<sup>2+</sup> (Fig 3). These findings strongly suggested a significant change in protein stability. Interestingly, Pt-45 displayed 3 early losses which is coherent with the key role of MMP-10 during the invasive process of implantation [41,42]. In conclusion, our computational chemistry calculations of MMP-10 and FGA mutations thus argued strongly in favour of pathogenic effects.

Regarding variants belonging to additional biological processes IDO2-p.Phe180Cys, IDO2-p.Phe250Ser, LIFR-p.Arg780Cys, TLR3-p.Ala795Val, EPAS1-p.Tyr488Cys and EPAS1-p.Leu504Val are particularly interesting because they affected factors (indoleamine 2,3-dioxygenase-IDO2, leukemia inhibitory factor receptor alpha-LIFR, toll like receptor 3-TLR3, endothelial PAS domain protein 1-EPAS1) playing key roles during pregnancy and/or due to the mutations' molecular nature. Although screening large cohorts of RPL individuals is necessary, the EPAS-p.Tyr488Cys mutation might represent a mutational hotspot as it was present in two unrelated patients.

In the present study, we have used 4 bioinformatic tools to predict pathogenicity caused by C+ mutations. We have chosen these programs as they have demonstrated high levels of positive prediction values [43,44]. Seven out of 26 (27%) mutations displayed scores compatible with deleterious effects in all tested programs: CDH1-p.Val55Gly, THBD-p.Trp153Gly, FGA-p.Phe685Cys, BMP7-p.Arg150Cys, IDO2-p.Phe180Cys, IDO2-p.Phe250Ser and MMP-10-p.Asp199Asn (Table 2).

Interestingly, 35% of patients (Pt-5, Pt-19, Pt-20, Pt-22, Pt-26, Pt-28 and Pt-45) had two direct sequencing confirmed C+ sequence variants. The genes affected by these mutations in Pt-5, Pt-19 and Pt-20 are known to have functions in distinct biological processes. However, both mutations carried by Pt-22 or Pt-45 involved genes participating in common biological processes: Pt-22 had two variants in F5 (coagulation) while Pt-45 presented variants in MMP-10 and TNC (extracellular matrix remodelling). Furthermore, Pt-26 and Pt-28 were carriers of mutations present in genes (Pt-26: MMP-9 and CR1; Pt-28: COL6A3 and TLR3) affecting the same biological processes (extracellular matrix remodelling and immunological function modulation). These findings thus suggest that distinct variants' additive/epistatic effects contribute towards RPL aetiology. Indeed, physiological (and pathological) reproductive phenotypes can be considered quantitative traits resulting from the subtle interaction of hundreds of genes. This scenario, as well as the fact that infertility genetic causative variants are under strong negative selection, evokes that reproductive biological processes are modulated by functionally-redundant molecular cascades.

Concerning segregation analysis of potentially functional variants we did propose to most of our RPL patients the idea of contacting their parents regarding their participation in our study but, unfortunately, they decided not to involve their families.

Taken together, our findings add valuable information regarding the maternal molecular origin of RPL and must be the starting point for further functional *in vitro* and *in vivo* studies. To note, RPL has to be considered as the result of a complex combination of maternal/paternal factors, thereby molecular exploration of potential paternal dysfunctions is needed [45]. The bioinformatics analysis presented here represents an efficient approach of identifying mutations (having potentially moderate/strong functional effects) associated with RPL aetiology. We hope that some of these variants (and genes) will be used, after their definitive functional validation, as RPL biomarkers.

## Supporting information

**S1 Fig. Methodological pipeline for creating the 234-RPL subset.**  
(TIF)

**S1 Table. Clinical features of RPL patients.**  
(DOC)

**S2 Table. Gene subset RSA-234.**  
(DOC)

**S1 Methods. Library preparation and sequencing.**  
(DOCX)

**S1 Results. Fragment Molecular Orbital (FMO) calculations.**  
(DOCX)

## Acknowledgments

We would like to thank Oscar Ortega-Recalde for technical support during NGS analysis.

## Author Contributions

**Conceptualization:** Paul Laissue.

**Data curation:** Paula Quintero-Ronderos, Carlos Fernando Suárez, Daniel Vaiman.

**Formal analysis:** Paula Quintero-Ronderos, Carlos Fernando Suárez, Manuel Alfonso Patarroyo, Daniel Vaiman, Jean-Christophe Gris, Paul Laissue.

**Funding acquisition:** Paul Laissue.

**Investigation:** Paula Quintero-Ronderos, Eric Mercier, Michiko Fukuda, Ronald González, Carlos Fernando Suárez, Manuel Alfonso Patarroyo, Daniel Vaiman, Jean-Christophe Gris, Paul Laissue.

**Methodology:** Ronald González, Carlos Fernando Suárez, Manuel Alfonso Patarroyo, Daniel Vaiman, Jean-Christophe Gris, Paul Laissue.

**Project administration:** Paul Laissue.

**Resources:** Eric Mercier, Ronald González, Manuel Alfonso Patarroyo, Jean-Christophe Gris, Paul Laissue.

**Software:** Ronald González, Carlos Fernando Suárez, Manuel Alfonso Patarroyo.

**Supervision:** Paul Laissue.

**Validation:** Paul Laissue.

**Visualization:** Paula Quintero-Ronderos, Paul Laissue.

**Writing – original draft:** Paul Laissue.

**Writing – review & editing:** Paula Quintero-Ronderos, Eric Mercier, Michiko Fukuda, Ronald González, Carlos Fernando Suárez, Manuel Alfonso Patarroyo, Daniel Vaiman, Jean-Christophe Gris, Paul Laissue.

## References

1. Larsen EC, Christiansen OB, Kolte AM, Macklon N. New insights into mechanisms behind miscarriage. *BMC Med.* 2013; 11:154. <https://doi.org/10.1186/1741-7015-11-154> PMID: 23803387
2. Li TC, Makris M, Tomsu M, Tuckerman E, Laird S, Li TC, et al. Recurrent miscarriage: aetiology, management and prognosis. *Hum Reprod Update.* 2002; 8(5): 463–81. <https://doi.org/10.1093/humupd/8.5.463> PMID: 12398226
3. Diejomaoh MFE. Recurrent spontaneous miscarriage is still a challenging diagnostic and therapeutic quagmire. *Med Princ Pract.* 2015; 24 Suppl 1: 38–55. <https://doi.org/10.1159/000365973> <https://doi.org/10.1159/000365973> PMID: 25428171
4. Mercier E, Lissalde-Lavigne G, Gris J-C. JAK2 V617F Mutation in Unexplained Loss of First Pregnancy. *N Engl J Med.* 2007; 357(19): 1984–85. <https://doi.org/10.1056/NEJMc071528> <https://doi.org/10.1056/NEJMc071528> PMID: 17989398
5. Su M-T, Lin S-H, Chen Y-C. Genetic association studies of angiogenesis- and vasoconstriction-related genes in women with recurrent pregnancy loss: a systematic review and meta-analysis. *Hum Reprod Update.* 2011; 17(6): 803–12. <https://doi.org/10.1093/humupd/dmr027> <https://doi.org/10.1093/humupd/dmr027> PMID: 21642294
6. Daher S, Mattar R, Gueuvoghlian-Silva BY, Torloni MR. Genetic Polymorphisms and Recurrent Spontaneous Abortions: An Overview of Current Knowledge. *Am J Reprod Immunol.* 2012; 67(4): 341–7. <https://doi.org/10.1111/j.1600-0897.2012.01123.x> <https://doi.org/10.1111/j.1600-0897.2012.01123.x> PMID: 22390536
7. Vaiman D. Genetic regulation of recurrent spontaneous abortion in humans. *Biomed J.* 2015; 38(1): 11–24. <https://doi.org/10.4103/2319-4170.133777> <https://doi.org/10.4103/2319-4170.133777> PMID: 25179715
8. Cha J, Sun X, Dey SK. Mechanisms of implantation: strategies for successful pregnancy. *Nat Med.* 2012; 18(12): 1754–67. <https://doi.org/10.1038/nm.3012> <https://doi.org/10.1038/nm.3012> PMID: 23223073
9. Anifandis G, Messini C, Dafopoulos K, Sotiriou S, Messinis I. Molecular and cellular mechanisms of sperm-oocyte interactions opinions relative to in vitro fertilization (IVF). *Int J Mol Sci.* 2014; 15(7): 12972–97. <https://doi.org/10.3390/ijms150712972> <https://doi.org/10.3390/ijms150712972> PMID: 25054321
10. Koot YEM, Teklenburg G, Salker MS, Brosens JJ, Macklon NS. Molecular aspects of implantation failure. *Biochim Biophys Acta.* 2012; 1822(12): 1943–50. <https://doi.org/10.1016/j.bbadis.2012.05.017> <https://doi.org/10.1016/j.bbadis.2012.05.017> PMID: 22683339
11. White MD, Plachta N. How adhesion forms the early mammalian embryo. *Curr Top Dev Biol.* 2015; 112: 1–17. <https://doi.org/10.1016/bs.ctdb.2014.11.022> <https://doi.org/10.1016/bs.ctdb.2014.11.022> PMID: 25733136
12. Seng KC, Seng CK. The success of the genome-wide association approach: a brief story of a long struggle. *Eur J Hum Genet.* 2008; 16(4): 554–64. <https://doi.org/10.1038/ejhg.2008.12> <https://doi.org/10.1038/ejhg.2008.12> PMID: 18285837
13. Wang Li, Wang Zeng Chan, Xie Cui, Feng Liu Xiao, Yang Mao Sheng. Genome-wide screening for risk loci of idiopathic recurrent miscarriage in a Han Chinese population: a pilot study. *Reprod Sci.* 2010; 17(6): 578–84. <https://doi.org/10.1177/1933719110364248> <https://doi.org/10.1177/1933719110364248> PMID: 20305137
14. Kolte AM, Nielsen HS, Moltke I, Degn B, Pedersen B, Sunde L, et al. A genome-wide scan in affected sibling pairs with idiopathic recurrent miscarriage suggests genetic linkage. *Mol Hum Reprod.* 2011; 17



- (6): 379–85. <https://doi.org/10.1093/molehr/gar003> <https://doi.org/10.1093/molehr/gar003> PMID: 21257601
15. L'Hôte D, Serres C, Laissue P, Oulmouden A, Rogel-Gaillard C, Montagutelli X, et al. Centimorgan-range one-step mapping of fertility traits using interspecific recombinant congenic mice. *Genetics*. 2007; 176(3): 1907–21. <https://doi.org/10.1534/genetics.107.072157> <https://doi.org/10.1534/genetics.107.072157> PMID: 17483418
  16. L'Hôte D, Laissue P, Serres C, Montagutelli X, Veitia RA, Vaiman D, et al. Interspecific resources: a major tool for quantitative trait locus cloning and speciation research. *BioEssays*. 2010; 32(2): 132–142. <https://doi.org/10.1002/bies.200900027> <https://doi.org/10.1002/bies.200900027> PMID: 20091755
  17. Vatin M, Burgio G, Renault G, Laissue P, Firlej V, Mondon F, et al. Refined Mapping of a Quantitative Trait Locus on Chromosome 1 Responsible for Mouse Embryonic Death. Ebihara S, editor. *PLoS One*. 2012; 7(8): e43356. <https://doi.org/10.1371/journal.pone.0043356> PMID <https://doi.org/10.1371/journal.pone.0043356> PMID: 22916247
  18. Vatin M, Bouvier S, Bellazi L, Montagutelli X, Laissue P, Ziyat A, et al. Polymorphisms of Human Placental Alkaline Phosphatase Are Associated with in Vitro Fertilization Success and Recurrent Pregnancy Loss. *Am J Pathol*. 2014; 184(2): 362–8. <https://doi.org/10.1016/j.ajpath.2013.10.024> <https://doi.org/10.1016/j.ajpath.2013.10.024> PMID: 24296104
  19. Laissue P, Lakhali B, Vatin M, Batista F, Burgio G, Mercier E, et al. Association of FOXD1 variants with adverse pregnancy outcomes in mice and humans. *Open Biol*. 2016; 6(10): 160109. <https://doi.org/10.1098/rsob.160109> <https://doi.org/10.1098/rsob.160109> PMID: 27805902
  20. Lissalde-Lavigne G, Fabbro-Peray P, Cochery-Nouvellon E, Mercier E, Ripart-Neveu S, Balducchi J-P, et al. Factor V Leiden and prothrombin G20210A polymorphisms as risk factors for miscarriage during a first intended pregnancy: the matched case-control “NOHA first” study. *J Thromb Haemost*. 2005; 3(10): 2178–84. <https://doi.org/10.1111/j.1538-7836.2005.01581.x> <https://doi.org/10.1111/j.1538-7836.2005.01581.x> PMID: 16194196
  21. Jenny RJ, Pittman DD, Toole JJ, Kriz RW, Aldape RA, Hewick RM, et al. Complete cDNA and derived amino acid sequence of human factor V. *Proc Natl Acad Sci U S A*. 1987; 84(14): 4846–50. PMID: 3110773
  22. Fonseca DJ, Patiño LC, Suárez YC, de Jesús Rodríguez A, Mateus HE, Jiménez KM, et al. Next generation sequencing in women affected by nonsyndromic premature ovarian failure displays new potential causative genes and mutations. *Fertil Steril*. 2015; 104(1): 154–162.e2. <https://doi.org/10.1016/j.fertnstert.2015.04.016> <https://doi.org/10.1016/j.fertnstert.2015.04.016> PMID: 25989972
  23. Fukuda MN, Sugihara K. An integrated view of L-selectin and trophinin function in human embryo implantation. *J Obstet Gynaecol Res*. 2008; 34(2): 129–36. <https://doi.org/10.1111/j.1447-0756.2008.00776.x> <https://doi.org/10.1111/j.1447-0756.2008.00776.x> PMID: 18412772
  24. Fukuda MN, Sugihara K. Cell adhesion molecules in human embryo implantation. *Sheng Li Xue Bao*. 2012; 64(3): 247–58. PMID: 22717627
  25. Kujovich JL. Factor V Leiden thrombophilia. *Genet Med*. 2011; 13(1): 1–16. <https://doi.org/10.1097/GIM.0b013e3181faa0f2> <https://doi.org/10.1097/GIM.0b013e3181faa0f2> PMID: 21116184
  26. Simcox LE, Ormisher L, Tower C, Greer IA. Thrombophilia and Pregnancy Complications. *Int J Mol Sci*. 2015; 16(12): 28418–28. <https://doi.org/10.3390/ijms161226104> <https://doi.org/10.3390/ijms161226104> PMID: 26633369
  27. Asselta R, Tenchini ML, Duga S. Inherited defects of coagulation factor V: the hemorrhagic side. *J Thromb Haemost*. 2006; 4(1): 26–34. <https://doi.org/10.1111/j.1538-7836.2005.01590.x> <https://doi.org/10.1111/j.1538-7836.2005.01590.x> PMID: 16409445
  28. Steen M, Dahlbäck B. Thrombin-mediated proteolysis of factor V resulting in gradual B-domain release and exposure of the factor Xa-binding site. *J Biol Chem*. 2002; 277(41): 38424–30. <https://doi.org/10.1074/jbc.M204972200> <https://doi.org/10.1074/jbc.M204972200> PMID: 12163491
  29. Bos MHA, Camire RM. A bipartite autoinhibitory region within the B-domain suppresses function in factor V. *J Biol Chem*. 2012; 287(31): 26342–51. <https://doi.org/10.1074/jbc.M112.377168> <https://doi.org/10.1074/jbc.M112.377168> PMID: 22707727
  30. Erdogan E, Bukys MA, Kalafatis M. The contribution of amino acid residues 1508–1515 of factor V to light chain generation. *J Thromb Haemost*. 2008; 6(1): 118–124. <https://doi.org/10.1111/j.1538-7836.2007.02803.x> <https://doi.org/10.1111/j.1538-7836.2007.02803.x> PMID: 17944989
  31. Peng W, Quinn-Allen MA, Kane WH. Mutation of hydrophobic residues in the factor Va C1 and C2 domains blocks membrane-dependent prothrombin activation. *J Thromb Haemost*. 2005; 3(2): 351–4. <https://doi.org/10.1111/j.1538-7836.2004.01083.x> <https://doi.org/10.1111/j.1538-7836.2004.01083.x> PMID: 15670043



32. Maruyama I, Bell CE, Majerus PW. Thrombomodulin is found on endothelium of arteries, veins, capillaries, and lymphatics, and on syncytiotrophoblast of human placenta. *J Cell Biol.* 1985; 101(2): 363–71. PMID: [2991298](https://pubmed.ncbi.nlm.nih.gov/2991298/)
33. Li Y-H, Kuo C-H, Shi G-Y, Wu H-L. The role of thrombomodulin lectin-like domain in inflammation. *J Biomed Sci.* 2012; 19: 34. <https://doi.org/10.1186/1423-0127-19-34> <https://doi.org/10.1186/1423-0127-19-34> PMID: [22449172](https://pubmed.ncbi.nlm.nih.gov/22449172/)
34. Martin FA, Murphy RP, Cummins PM. Thrombomodulin and the vascular endothelium: insights into functional, regulatory, and therapeutic aspects. *AJP Hear Circ Physiol.* 2013; 304(12): H1585–H1597. <https://doi.org/10.1152/ajpheart.00096.2013> <https://doi.org/10.1152/ajpheart.00096.2013> PMID: [23604713](https://pubmed.ncbi.nlm.nih.gov/23604713/)
35. Stortoni P, Cecati M, Giannubilo SR, Sartini D, Turi A, Emanuelli M, et al. Placental thrombomodulin expression in recurrent miscarriage. *Reprod Biol Endocrinol.* 2010; 8: 1. <https://doi.org/10.1186/1477-7827-8-1> <https://doi.org/10.1186/1477-7827-8-1> PMID: [20051099](https://pubmed.ncbi.nlm.nih.gov/20051099/)
36. Isermann B, Sood R, Pawlinski R, Zogg M, Kalloway S, Degen JL, et al. The thrombomodulin-protein C system is essential for the maintenance of pregnancy. *Nat Med.* 2003; 9(3): 331–7. <https://doi.org/10.1038/nm825> <https://doi.org/10.1038/nm825> PMID: [12579195](https://pubmed.ncbi.nlm.nih.gov/12579195/)
37. Sood R, Sholl L, Isermann B, Zogg M, Coughlin SR, Weiler H. Maternal Par4 and platelets contribute to defective placenta formation in mouse embryos lacking thrombomodulin. *Blood.* 2008; 112(3): 585–591. <https://doi.org/10.1182/blood-2007-09-111302> <https://doi.org/10.1182/blood-2007-09-111302> PMID: [18490515](https://pubmed.ncbi.nlm.nih.gov/18490515/)
38. Vu D, Neerman-arbez M. Molecular mechanisms accounting for fibrinogen deficiency: From large deletions to intracellular retention of misfolded proteins. *Journal of Thrombosis and Haemostasis.* 2007. Suppl. 1: 125–131. <https://doi.org/10.1111/j.1538-7836.2007.02465.x> <https://doi.org/10.1111/j.1538-7836.2007.02465.x> PMID: [17635718](https://pubmed.ncbi.nlm.nih.gov/17635718/)
39. Acharya SS, Dimichele DM. Rare inherited disorders of fibrinogen. *Haemophilia.* 2008; 14(6): 1151–58. <https://doi.org/10.1111/j.1365-2516.2008.01831.x> <https://doi.org/10.1111/j.1365-2516.2008.01831.x> PMID: [19141154](https://pubmed.ncbi.nlm.nih.gov/19141154/)
40. Casini A, Neerman-Arbez M, Ariens RA, de Moerloose P. Dysfibrinogenemia: From molecular anomalies to clinical manifestations and management. *J Thromb Haemost.* 2015; 13(6): 909–19. <https://doi.org/10.1111/jth.12916> <https://doi.org/10.1111/jth.12916> PMID: [25816717](https://pubmed.ncbi.nlm.nih.gov/25816717/)
41. Zhao Y, Garcia J, Kolp L, Cheadle C, Rodriguez A, Vlahos NF. The impact of luteal phase support on gene expression of extracellular matrix protein and adhesion molecules in the human endometrium during the window of implantation following controlled ovarian stimulation with a GnRH antagonist protocol. *Fertil Steril.* 2010; 94(6): 2264–71. <https://doi.org/10.1016/j.fertnstert.2010.01.068> <https://doi.org/10.1016/j.fertnstert.2010.01.068> PMID: [20226447](https://pubmed.ncbi.nlm.nih.gov/20226447/)
42. Renaud SJ, Kubota K, Rumi MAK, Soares MJ. The FOS transcription factor family differentially controls trophoblast migration and invasion. *J Biol Chem.* 2014; 289(8): 5025–39. <https://doi.org/10.1074/jbc.M113.523746> <https://doi.org/10.1074/jbc.M113.523746> PMID: [24379408](https://pubmed.ncbi.nlm.nih.gov/24379408/)
43. Thusberg J, Olatubosun A, Vihinen M. Performance of mutation pathogenicity prediction methods on missense variants. *Hum Mutat.* 2011; 32(4): 358–68. <https://doi.org/10.1002/humu.21445> <https://doi.org/10.1002/humu.21445> PMID: [21412949](https://pubmed.ncbi.nlm.nih.gov/21412949/)
44. Walters-Sen LC, Hashimoto S, Thrush DL, Reshmi S, Gastier-Foster JM, Astbury C, et al. Variability in pathogenicity prediction programs: impact on clinical diagnostics. *Mol Genet genomic Med.* 2015; 3(2): 99–110. <https://doi.org/10.1002/mgg3.116> <https://doi.org/10.1002/mgg3.116> PMID: [25802880](https://pubmed.ncbi.nlm.nih.gov/25802880/)
45. Puscheck EE, Jeyendran RS. The impact of male factor on recurrent pregnancy loss. *Curr Opin Obstet Gynecol.* 2007; 19(3): 222–8. <https://doi.org/10.1097/GCO.0b013e32813e3ff0> <https://doi.org/10.1097/GCO.0b013e32813e3ff0> PMID: [17495637](https://pubmed.ncbi.nlm.nih.gov/17495637/).