



HAL
open science

B cells response directed against Cut4 and CFP21 lipolytic enzymes in active and latent tuberculosis infections

Wendy Rénier, Arnaud Bourdin, Pierre-Alain Rubbo, Marianne Peries, Luc Dedieu, Sophie Bendriss, Laurent Kremer, Stéphane Canaan, Dominique Terru, Sylvain Godreuil, et al.

► **To cite this version:**

Wendy Rénier, Arnaud Bourdin, Pierre-Alain Rubbo, Marianne Peries, Luc Dedieu, et al.. B cells response directed against Cut4 and CFP21 lipolytic enzymes in active and latent tuberculosis infections. PLoS ONE, 2018, 13 (4), pp.e0196470. 10.1371/journal.pone.0196470 . hal-01783443

HAL Id: hal-01783443

<https://hal.umontpellier.fr/hal-01783443v1>

Submitted on 25 Sep 2018

HAL is a multi-disciplinary open access archive for the deposit and dissemination of scientific research documents, whether they are published or not. The documents may come from teaching and research institutions in France or abroad, or from public or private research centers.

L'archive ouverte pluridisciplinaire **HAL**, est destinée au dépôt et à la diffusion de documents scientifiques de niveau recherche, publiés ou non, émanant des établissements d'enseignement et de recherche français ou étrangers, des laboratoires publics ou privés.



Distributed under a Creative Commons Attribution 4.0 International License

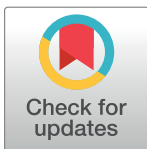
RESEARCH ARTICLE

B cells response directed against Cut4 and CFP21 lipolytic enzymes in active and latent tuberculosis infections

Wendy Rénier¹, Arnaud Bourdin², Pierre-Alain Rubbo¹, Marianne Peries¹, Luc Dedieu³, Sophie Bendriss¹, Laurent Kremer⁴, Stéphane Canaan³, Dominique Terru¹, Sylvain Godreuil¹, Nicolas Nagot¹, Philippe Van de Perre¹, Edouard Tuaillon^{1*}

1 Pathogenesis and Control of Chronic Infections, INSERM, EFS, Université de Montpellier, CHU Montpellier, Montpellier, France, **2** PhyMedExp, INSERM, EFS, Université de Montpellier, CHU Montpellier, Montpellier, France, **3** Laboratory of Enzymology at Interfaces and Physiology of Lipolysis, CNRS, Université Aix-Marseille, France, **4** Institute of Research on Infection of Montpellier, CNRS, INSERM, Université de Montpellier, Montpellier, France

* e-tuaillon@chu-montpellier.fr



OPEN ACCESS

Citation: Rénier W, Bourdin A, Rubbo P-A, Peries M, Dedieu L, Bendriss S, et al. (2018) B cells response directed against Cut4 and CFP21 lipolytic enzymes in active and latent tuberculosis infections. PLoS ONE 13(4): e0196470. <https://doi.org/10.1371/journal.pone.0196470>

Editor: Pere-Joan Cardona, Fundació Institut d'Investigació en Ciències de la Salut Germans Trias i Pujol, Universitat Autònoma de Barcelona, SPAIN

Received: December 19, 2017

Accepted: April 13, 2018

Published: April 30, 2018

Copyright: © 2018 Rénier et al. This is an open access article distributed under the terms of the [Creative Commons Attribution License](https://creativecommons.org/licenses/by/4.0/), which permits unrestricted use, distribution, and reproduction in any medium, provided the original author and source are credited.

Data Availability Statement: All relevant data are within the paper and its Supporting Information files.

Funding: Funding was provided by CHU de Montpellier; ID Number 9179.

Competing interests: The authors have declared that no competing interests exist.

Abstract

Background

Better understanding of the immune response directed against *Mycobacterium tuberculosis* (*Mtb*) is critical for development of vaccine strategies and diagnosis tests. Previous studies suggested that *Mtb* enzymes involved in lipid metabolism, are associated with persistence and/or reactivation of dormant bacilli.

Methods

Circulating antibodies secreting cells (ASCs), memory B cells, and antibodies directed against Cut4 (Rv3452) and CFP21 (Rv1984c) antigens were explored in subjects with either active- or latent-tuberculosis (LTB), and in *Mtb*-uninfected individuals.

Results

Circulating anti-Cut4 ASCs were detected in 11/14 (78.6%) subjects from the active TB group vs. 4/17 (23.5%) from the LTB group ($p = 0.001$). Anti-CFP21 ASCs were found in 11/14 (78.6%) active TB vs. in 5/17 (29.4%) LTB cases ($p = 0.01$). Circulating anti-Cut4 and anti-CFP21 ASCs were not detected in 38 *Mtb* uninfected controls. Memory B cells directed against either Cut4 or CFP21 were identified in 8/11 (72.7%) and in 9/11 (81.8%) subjects with LTB infection, respectively, and in 2/6 *Mtb* uninfected individuals (33.3%). High level of anti-Cut4 and anti-CFP21 IgG were observed in active TB cases.

Conclusion

Circulating IgG SCs directed against Cut4 or CFP21 were mostly detected in patients presenting an active form of the disease, suggesting that TB reactivation triggers an immune response against these two antigens.

Introduction

With almost 8.6 million cases of tuberculosis (TB) and 1.6 million of deaths related to TB each year, TB remains a major burden worldwide [1]. However, among the estimated third of the world's population infected by *Mycobacterium tuberculosis* (*Mtb*), most of individuals will never develop an active form of the disease in their lifetime. Immunological mechanisms involved in the bacterial control during the latent stage of the infection remain incompletely understood [2]. Better understanding of the immune response directed against TB is critical for development of vaccine strategies and diagnosis tests. Regarding immunodiagnostic of TB, interferon gamma released assays (IGRA) has improved the identification of asymptomatic latent TB (LTB) in low incidence countries [3–4] but were unable to distinguish active from latent TB infection [5–7], and commercial assays based on antibody detection failed to reach the expected performances for a diagnosis assay dedicated to TB diagnosis [8]. It is long known that cellular response is essential to maintain TB in the latent form of the infection, but the B-cell response against *Mtb* antigens has been less studied and there is still a controversy about whether humoral immunity contributes to host defense against TB [2, 9, 10]. The tuberculous granuloma may be viewed as a peripheral lymphoid follicle-like structure displaying features of B cell germinal center [11]. Cellular proliferation is observed in these B cell aggregates in the lungs of humans and mice with TB [12]. Recent evidence suggest that antibody response during TB infections in the latent form is distinct from the humoral response observed in active TB [13, 14].

In previous studies, *Mtb* lipolytic enzymes have been identified as targets of humoral response in active-TB [15, 16]. We have observed antibody directed against CUT4 in subjects with active TB [15]. T cell and B cell response directed against CFP21 has been reported in mice and human [17–20]. In addition, CFP21 has been used in multivalent vaccines and induced protective immunity against *Mtb* infection in mice [21]. These enzymes are involved in lipid metabolism and could take part in *Mtb* exit of dormancy [22–25]. During the dormancy phase, *Mtb* remains constrained within lung granulomas, which are composed of several cellular types, including T cells, B cells, and macrophages [11, 12, 26, 27]. *Mtb* persists confined toward the center of the granuloma, in foamy macrophages, that are lipid-rich cells derived from normal macrophages [25, 28–30]. The pathogen itself accumulates the host lipids in the form of intra-cytoplasmic lipid inclusions. These lipidic inclusions, mainly composed of triacylglycerides, could be later used as energy substrate by the bacilli during dormancy or in case of reactivation [25, 28–30].

The analysis of B cell immune response directed against TB lipolytic enzymes such as Cut4 and CFP21 offers an opportunity to explore the host-pathogen interplay because these enzymes are immunogenic, secreted by the bacilli [31], and may be expressed during TB reactivation [15, 16]. Cutinases Cut4 and CFP21 are serine-esterases involved in the metabolism of lipidic substrates, together with other lipolytic enzymes [22, 23, 31]. During viral or bacterial infections, antigen exposure triggers the immune response through B cell activation with differentiation either into plasmablasts (CD20⁻, CD38⁺⁺⁺), and plasma cells (CD20⁻, CD138⁺), or into resting memory B cells. The peaks of circulating plasmablasts and plasma cells can be detected by flow cytometry or by ELISpot techniques as early as seven days after vaccination or infection [32, 33], and remain detectable only as long as the pathogen is actively released from infected cells [34–36]. By contrast, specific memory B cells that play a key role in the long term maintenance of specific immune responses have an estimated half-life exceeding the life expectancy of individuals [37].

This study aimed to explore circulating antibody secreting cells (ASCs), memory B cells, and antibodies directed against two *Mtb* lipolytic enzymes belonging to the cutinase family:

Cut4 and CFP21 antigens, in subjects with either active TB disease or LTB infection or no *Mtb* infection.

Materials and methods

Study participants

Subjects were enrolled at the Montpellier University Hospital. The population consist of subjects diagnosed with active or latent TB and patients uninfected by *Mtb* but immunized against BCG in childhood. The French BCG vaccination program consisted of a mandatory BCG vaccine dose in children until 2007, and of re-vaccination of tuberculin-negative children. The status for TB was based on the results of *Mtb* cultures, IGRA assays, clinical symptoms presentation and/or chest X-Ray-thoracic CT scan. All the subjects were tested for *Mtb* infection using the T-Spot.[®] TB assay (Oxford Immunotec, UK), an ELISpot assay based on the detection IFN- γ SCs after stimulation with ESAT-6 and CFP10 peptides. Patients were included after approval of the local ethics committee (Sud Méditerranée III, France) and after providing a written informed consent, (Trial registration: NCT No. 02898623).

M. tuberculosis antigens preparation

Cut4 (Rv3452) and CFP21 (Rv1984c) were produced as N-terminal His-tag fusion proteins as previously described [6, 31]. Briefly, genes were amplified from cosmids MTCY13E12 and MTCY39, respectively (Pasteur Institute, Paris, France), and cloned into pDEST[™]14 expression vector allowing the expression of N-terminal His-tag fusion proteins. All proteins were produced in *E. coli* strains, refolded from inclusion bodies and purified using a Ni²⁺-NTA column and gel filtration [31].

For CFP21, the His-tag was removed by enzymatic digestion with TEV and proteins without His-tag were purified by exclusion from a Ni²⁺-NTA column and conserved in Tris 10 mM, NaCl 150 mM, pH 8. Due to its peculiar pH instability and NaCl sensitivity, the Cut4 His-tag was not removed and protein was conserved into 50 mM CHES buffer, pH 9 [31]. Tuberculin Purified Protein Derivative (PPD) was purchased from Statens Serum Institut (Denmark).

Cells preparation and ELISpot assay

Peripheral Blood Mononuclear Cells (PBMCs) were purified using lymphocytes separation medium (Eurobio, France, following the manufacturer's indications) and cryopreserved. After thawing, cells were mixed with purified erythrocytes before the addition of the Rosette-Sep cocktail for enrichment of B cells (Stemcell Technologies, France).

Immunobilon-P flat bottomed 96-wells microtiter plates (Millipore, USA) were coated with either phosphate buffered saline (PBS; negative control; Eurobio, France), unlabelled human immunoglobulin G (IgG) (positive control; Rockland Inc, USA), PPD or Cut4 or CFP21 at a final concentration of 50 μ g/ml. Plates were then blocked with complete RPMI culture medium (Eurobio) containing 10% FBS (Foetal Bovine Serum, Eurobio) and supplemented with penicillin (100 U/ml) and streptomycin (100 μ g/ml) (Invitrogen, UK) for 2 hours at 37°C, in the presence of 5% CO₂. One hundred thousand B cells/well were seeded, except for the IgG positive control where only five thousand B cells were used. Cells were then incubated with 200 μ l of RPMI supplemented by 10% FBS/well for 22–24 hours at 37°C, in the presence of 5% CO₂. After removal of the cells, 100 μ l of secondary antibody directed against human IgG conjugated with alkaline phosphatase (Rockland Inc, USA) was added (1/1000 dilution in PBS, incubated over-night at 4°C). Finally, the immunospots were revealed using NBT-BCIP

substrate (BioRad, USA). Enumeration of total IgG secreting cells was used as control of the capacity of the cells to secrete IgG. ASCs were counted using an Axioplan 2 Imaging microscope (Zeiss, Germany) at a magnification of 40×. Results were expressed as the number of immunospots produced by 1×10^5 B lymphocytes after subtraction of the number of ASCs found in the negative control.

***In vitro* memory B cells activation**

Briefly, purified B cells were activated during a 5-day culture at 37°C, in the presence of 5% CO₂ using a polyclonal activator cocktail: CpG oligonucleotide ODN 2006 (InVivoGen, CA, USA; 10 µg/ml), IL2 (100 U/ml), IL10 (50 ng/ml), IL21 (0.1 µg/ml) (Peprotech Inc., USA), histidine-tagged-CD40L (0.5 µg/ml), anti-His (R&D Systems, USA; 5 µg/ml), in RPMI with 10% FBS. Enumeration of IgG secreting cells was used as a positive control to evaluate the capacity of B cells to undergo the terminal differentiation into plasma cells under polyclonal stimulation [28]. The positive controls have to display at least 5 spots without polyclonal activation (5,000 B cells) and 7 spots with polyclonal activation (500 B cells). In other wells, 1×10^5 activated B cells have been needed for the rest of the ELISpot procedures described before.

Enzyme-Linked ImmunoSorbent assay using *Mtb* lipolytic enzymes as antigens

The 96-wells microtiter plates (Nunc, Denmark) were coated overnight with 100 µl of either tuberculin PPD or Cut4 or CFP21 at a final concentration of 5 µg/ml. Wells were blocked with Dulbecco's PBS pH 7.4 (Biowest, France), 2% BSA, 0.01% Tween 20 (Sigma-Aldrich, USA). One hundred microliters of patient blood serum per well (dilution: 1/100 in buffer) were incubated at 37°C for one hour. After several washing steps with PBS-T and PBS, bound antibodies were incubated with 100 µl of HRP-conjugated mouse anti-IgG secondary antibody (25 ng/ml) (antibodies-online GmbH, Germany) for an additional 1 hour at 37°C. After washing, 100 µl of enzymatic substrate tetramethylbenzidine (TMB; Bio-Rad, USA) and hydrogen peroxide were added and the reaction was stopped by adding 50 µl of 1 N phosphoric acid. The intensity of the colorimetric signal was measured using a Bio-Rad plate reader at 450 nm.

Statistical analysis

Data analyses were performed using the SAS version 9.3 software package (SAS Institute, USA). Due to the absence of normal distribution, continuous variables were described as median and inter-quartile range (IQR) and were compared with Wilcoxon Mann-Whitney tests and Chi-square test was used to compare percentages. The Spearman correlation coefficients were calculated to determine the relationship between continuous variables. The results with corresponding *P*-values < 0.05 were considered to be statistically significant.

Results

Clinical and biological characteristics of the subjects

The population studied included 49 individuals negative for *Mtb* infection as defined by a negative IGRA, 27 subjects presenting a LTb infection (IGRA positive without evidence of active TB), and 14 subjects with an active TB disease (*Mtb* culture positive). Subjects were untreated for TB at time of sampling. Clinical characteristics are presented in [Table 1](#). Among the 27 LTb patients, 5 had a history of active TB and were appropriately treated more than 10 years before sampling and 8 had a clinical suspicion of active TB. Among the 14 patients presenting an active form of the disease, nine were pulmonary cases, four presented both pulmonary and

Table 1. Subjects characteristics.

	TB negative n = 49	Latent TB n = 27	Active TB n = 14
Age; mean years (\pm SD)	52.1 (\pm 20.3)	58.0 (\pm 20.0)	41.6 (\pm 22.2) ^a
Female (%)	57.1%	51.9%	21.4% ^b
TB localization; n (%): Pulmonary TB Pulmonary + extra-pulmonary TB Extra-pulmonary TB	Not applicable	Not applicable	9 (64.3%) 4 (28.7%) 1 (7%)
Sputum smear positive (%)	Not applicable	Not applicable	43.0%
T-spot [®] TB; median (IQR) ESAT-6 INF- γ SCs CFP-10 INF- γ SCs	0 (0–0) 0 (0–1)	27 (14–69) ^c 30 (9–49) ^c	135 (23–200) ^d 115 (50–180) ^e

IQR: interquartile range.

Chi-Square and Mann-Whitney Wilcoxon tests

^ap = 0.0101 compared to LTB and p = 0.05 compared to TB negative

^bp = 0.0184 compared to TB negative

^cp < 0.001 compared to TB negative

^dp < 0.001 compared to negative TB and p = 0.0074 compared to LTB

^ep < 0.001 compared to negative TB and p = 0.084 compared to LTB.

<https://doi.org/10.1371/journal.pone.0196470.t001>

extra-pulmonary localizations and one displayed a strictly gastro-intestinal localization. All active TB cases were confirmed by culture and *Mtb* specific probe utilization. A therapy against active TB was initiated after sampling for all the patients included in the active TB group.

Enumeration of spontaneous circulating ASCs directed against Cut4 and CFP21

Circulating cells secreting spontaneously IgG antibodies (Abs) directed against Cut4 or CFP21 were explored by ELISpot assays. Immunospots corresponding to the footprint of cells secreting Abs directed against Cut4 or CFP21 were enumerated after overnight culture without polyclonal activation (Fig 1 and S1 Table). Anti-Cut4 and anti-CFP21 ASCs were observed in LTB and active TB patients but not in *Mtb*-uninfected controls (Fig 1A, 1B and 1C). Anti-Cut4 ASCs were detected in 11/14 subjects in the active TB group and in 4/17 patients of the LTB group, respectively (p = 0.004). Anti-CFP21 ASCs were detected in 11/14 patients of the active TB group vs. 5/17 subjects of the LTB group (p = 0.020) (Fig 1B and 1C). The numbers of anti-Cut4 and anti-CFP21 ASCs displayed a moderate positive correlation ($\rho = 0.597$; p < 0.001, data not shown). No correlation was observed between T-spot.[®] TB results and anti-Cut4 or anti-CFP21 ASCs ($\rho = 0.1$; p = 0.8, data not shown).

Memory B cells directed against Cut4, CFP21 and PPD in LTB and *Mtb* uninfected individuals

Memory B cells response against Cut4 and CFP21 was explored in 11 LTB patients and six *Mtb* uninfected individuals in whom a second blood collection was performed (Fig 2A). After 5 days of polyclonal activation, the ASCs directed against Cut4 and CFP21 were enumerated. Memory B cells secreting Abs directed against either Cut4 or CFP21 were present in 8/11 and in 9/11 patients with LTB infection, respectively, and in two out of six *Mtb* uninfected individuals (Fig 2B and 2C). The number of anti-Cut4 and anti-CFP21 memory B cells detected after polyclonal activation was not correlated ($\rho = 0.286$, p = 0.266, data not shown).

Memory B cell response against PPD was explored in parallel (Fig 2D). No difference was observed for the number of anti-PPD IgG SCs between the two groups of patients (p = 1). As illustrated by Fig 2D, a number of anti-tuberculin PPD IgG SCs over 10 immunospots per 10⁵

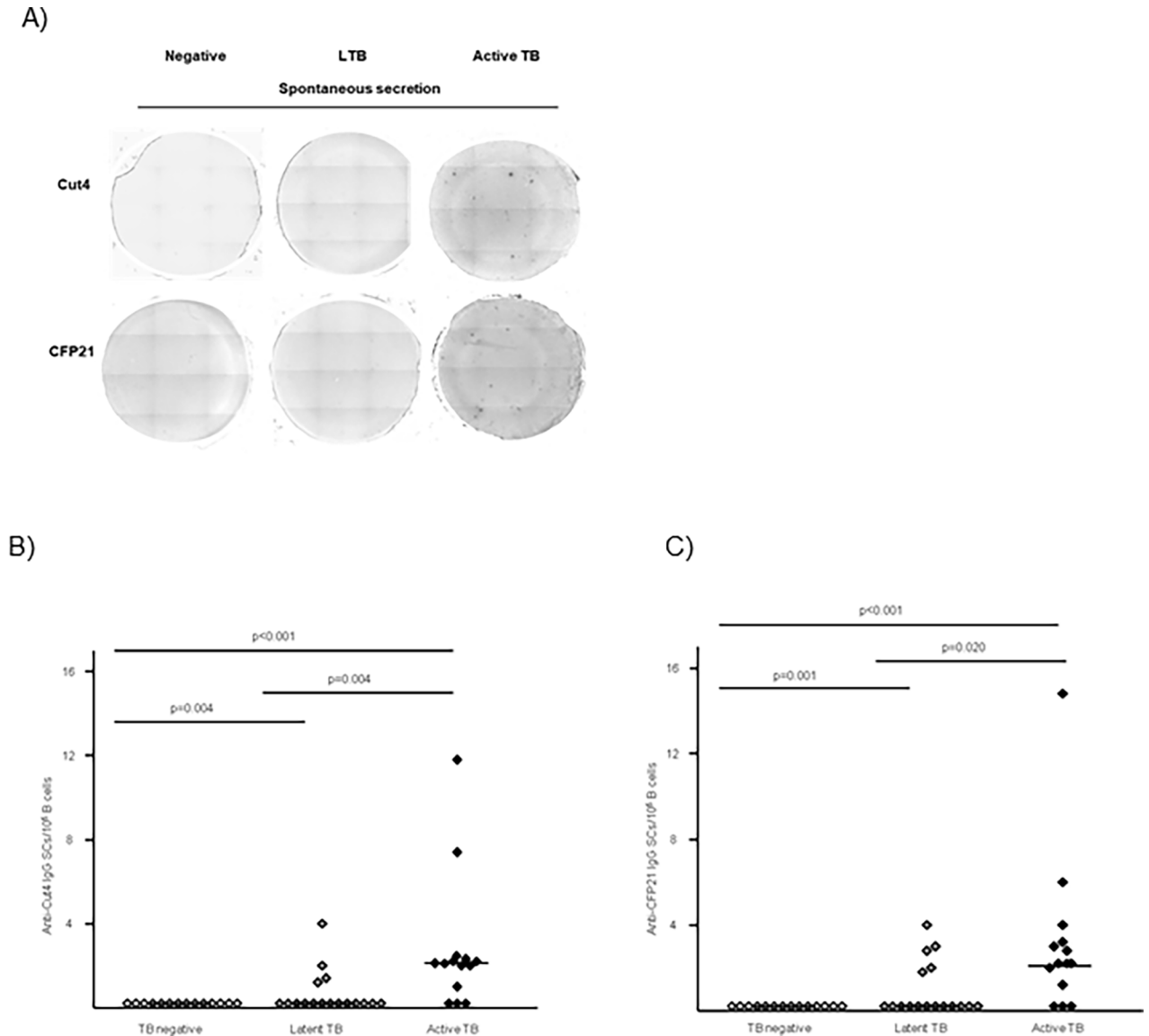


Fig 1. Anti-Cut4 and anti-CFP21 antibody circulating secreting cells (ASCs). (A) Anti-Cut4 and anti-CFP21 ASCs from representative subjects of the three TB groups using ELISpot assay. 0.1 million enriched B cells were seeded per well. Quantification of cells secreting spontaneously anti-Cut4 IgG (B) and anti-CFP21 IgG (C) in *Mtb* uninfected subjects and subjects with LTB and active TB. The median values have been drawn as horizontal lines. Values of Wilcoxon Mann Withney tests are indicated.

<https://doi.org/10.1371/journal.pone.0196470.g001>

B cells, was enumerated in subjects of TB negative and LTB groups. There was no correlation when comparing Cut4 IgG immunospots with PPD IgG immunospots results ($\rho = -0.030$; $p = 0.909$) but a weak positive correlation was found, between CFP21 IgG immunospots and PPD IgG immunospots ($\rho = 0.457$; $p = 0.065$; data not shown).

Serum levels of IgG directed against Cut4, CFP21 and PPD

Levels of IgG anti-Cut4, anti-CFP21 and anti-PPD were explored by ELISA (Fig 3 and S2 Table). High index of anti-Cut4 IgG were only observed in the TB group but the mean value was not significantly higher than in the two other groups ($p = 0.426$, and $p = 0.319$, respectively), and no difference was observed between LTB and *Mtb* uninfected groups ($p = 0.666$)

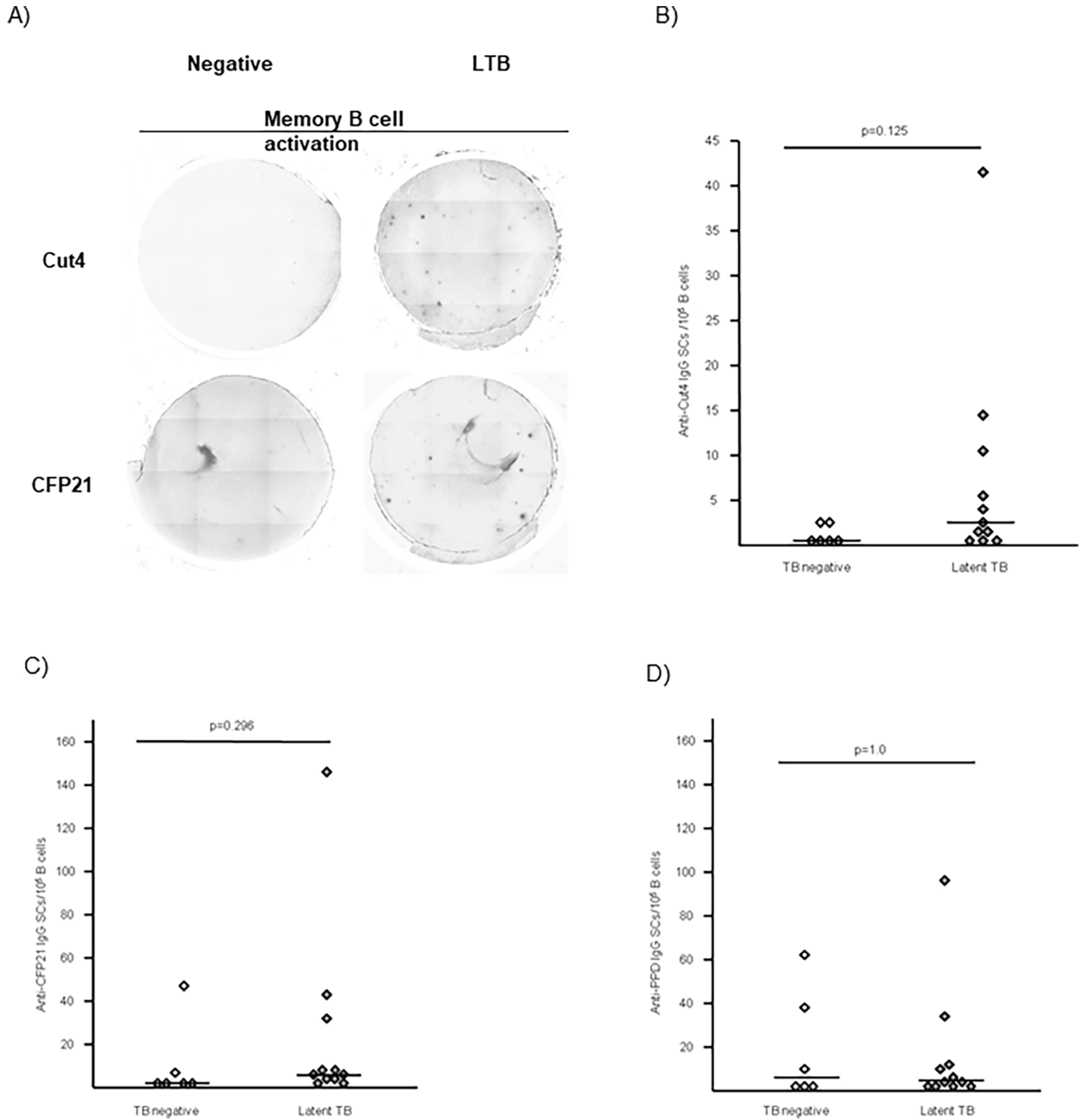


Fig 2. Anti-Cut4 and anti-CFP21 memory B cells. (A) Anti-Cut4 and anti-CFP21 ASCs after polyclonal stimulation from representative subjects of the *Mtb* uninfected and LTB groups, 1.105 enriched B cells were seeded per well. Quantification of ASC after five days of culture, anti-Cut4 IgG (B) and anti-CFP21 IgG (C) in *Mtb* uninfected and LTB subjects. The median values have been drawn as horizontal lines. Values of Wilcoxon Mann Withney tests are indicated.

<https://doi.org/10.1371/journal.pone.0196470.g002>

(Fig 3A). High level of IgG anti-CFP21 were also observed in some subjects with TB (Fig 3B) and the antibodies levels tend to be higher in subjects with an TB than in LTB and *Mtb*

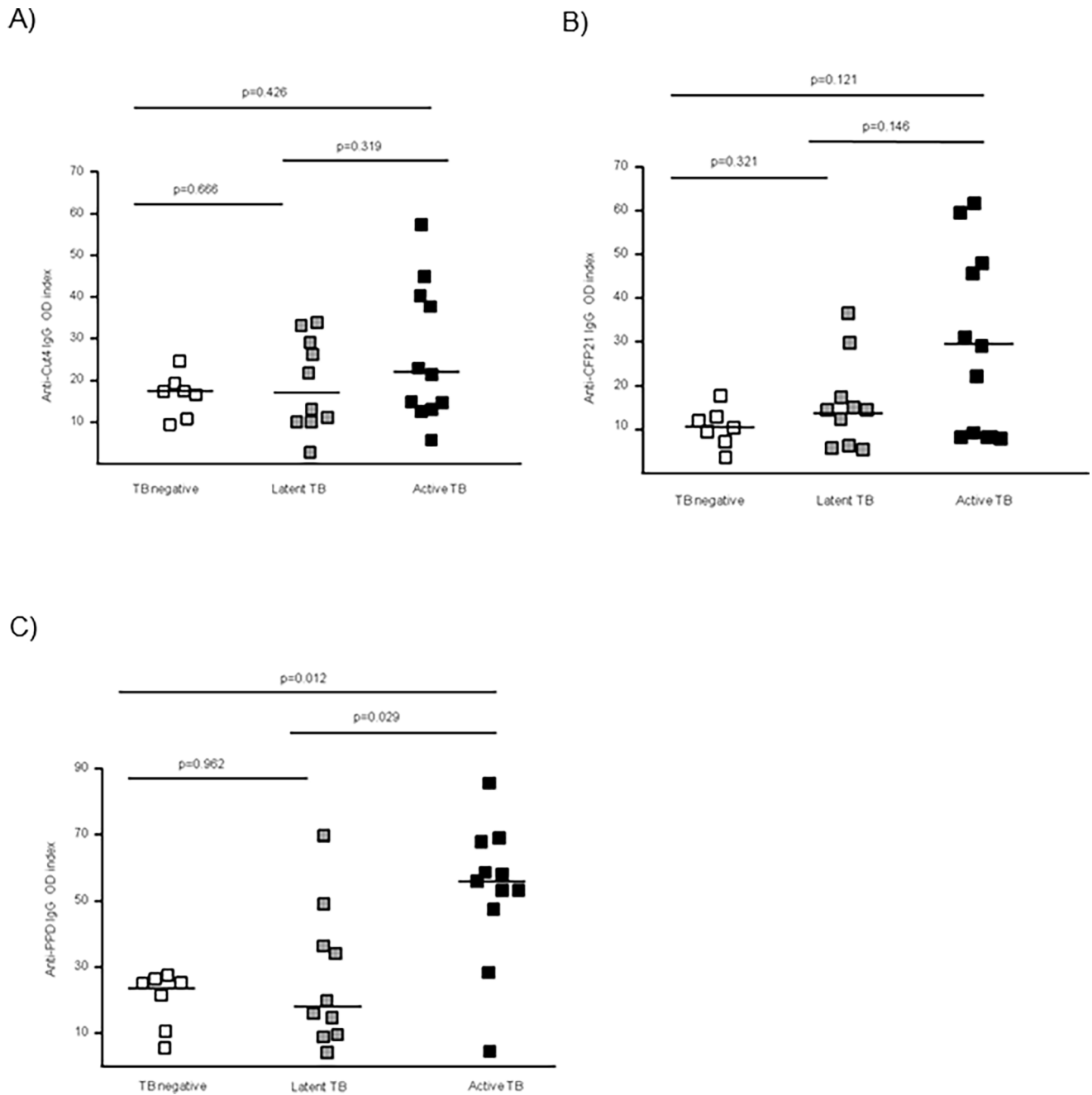


Fig 3. Serum antibody (IgG) levels against CFP21, Cut4 and PPD. The dot plots indicate level of antibodies directed against Cut4 (A), CFP21 (B), and PPD (C) in *Mtb* uninfected subjects, LTB subjects, and TB subjects. Antibodies levels are indicated per index of the optical density (OD), corresponding to the ratio of sample OD450nm/blank OD450nm.

<https://doi.org/10.1371/journal.pone.0196470.g003>

uninfected subjects ($p = 0.146$ and $p = 0.121$), respectively. No difference was observed between *Mtb* uninfected and LTB groups ($p = 0.321$). Higher levels of IgG anti-PPD were observed in the TB group compared to LTB and *Mtb* uninfected groups ($p = 0.029$, $p = 0.012$, respectively) (Fig 3C). A strong positive correlation between anti-CFP21 and anti-Cut4 IgG levels was found ($\rho = 0.822$, $p < 0.001$) whereas the correlations involving tuberculin PPD specific antibodies were only observed for anti-PPD and anti-CFP21 levels (anti-PPD and anti-

CFP21 levels: $\rho = 0.531$, $p = 0.004$; anti-PPD IgG and anti-Cut4 levels: $\rho = 0.433$, $p = 0.021$; data not shown).

Discussion

Complex and dynamic interplay characterized interaction between bacilli and host immune response during *Mtb* infection. In this study we observed a special pattern of effector B cell response directed against CFP21 and Cut4 *Mtb* antigens and associated with the reactivation phase of TB.

Immunospots, that are the footprints of circulating anti-CFP21 and anti-Cut4 IgG SCs, were found in the majority of subjects with active TB, but only in a limited number of LTB subjects, and were not detected in the control group consisting of *Mtb*-uninfected individuals. Antigen-presentation and terminal differentiation in ASCs can occur in B cells of the granuloma. These cells form aggregates at the surface of the structure and are exposed to TB antigens produced by macrophages [10, 38, 39]. A study in nonhuman primates demonstrates that plasma cells are present in lung granulomas and thoracic lymph nodes and actively secrete antibodies specific for *Mtb* antigens [40]. The generation of circulating plasma cells can be transiently observed in blood following antigen exposure. Hence, the detection of anti-CFP21 and anti-Cut4 IgG SCs can be regarded as an instant snapshot of the immune response to antigen at timing of blood collection. B cell response against others *Mtb* antigens have been previously reported during the different phases of TB. Hence, a higher number of circulating B cells directed against ESAT-6, CFP-10 and Ag85A were observed in patients with active TB compared to LTB and healthy controls [41]. Decay of ASCs directed against lipoarabinomannan and 38kDa antigen have been described during treatment of active TB [42]. Spontaneous release of TB antigen-specific Abs by in vitro-cultured, unstimulated PBMCs have been also reported in children with active TB [43].

In this study, the T-spot.® TB test was used to define the TB status of the subjects. No correlations between anti-CFP21/Cut4 SCs and IFN- γ SCs directed against ESAT-6/CFP-10 were observed. This assay is based on the enumeration of IFN- γ secreting T cells directed against *Mtb* antigens. ESAT-6 and CFP-10 antigens are expressed in both the latent and active phase of the disease and encoded by the RD1 genetic locus absent from BCG vaccine strains [44]. The peptides used in the T-spot.® TB assay target CD4+ T cells. After short stimulation with ESAT-6 and CFP10 antigens the IFN- γ SCs displayed the CD4+ effector memory cell phenotype (CD45RA-, CCR7-) [45]. We identified subjects with LTB tested positive for ESAT-6 and CFP-10 IFN- γ SCs but negative or positive for anti-CFP21 and anti-Cut4 ASCs. This observation may be a consequence of different *Mtb* gene expression reflecting metabolic adaptation of the bacilli to different micro-environmental condition at the distinct stages of LTB. During the entrance of the dormancy phase, mycobacteria have been shown to reside within infected foamy macrophages in granulomas, where they can acquire host lipids which accumulate in the form of intracellular lipid-loaded inclusion bodies [30, 46]. The massive accumulation of these lipids may constitute a source of carbon and energy required for bacilli survival during dormancy time-span [25, 26, 30, 47]. The degradation of fatty acids in the bacilli seems to occur during dormancy exit [26, 28]. It has been previously observed that in reactivated bacilli, a reduction in fatty acids levels coincides with an increased lipolytic enzymes activity [26, 48]. Whether Cut4 and CFP21 may be involved in the re-mobilization of the stored intracellular lipids represents an attractive hypothesis that still remains to be demonstrated. About 5–10% of the LTB will undergo a reactivation during their lifetime [48, 49]. A prospective study will need to be performed to establish if stratification of LTB according to anti-CFP21/Cut4 B cell response allows to identified individuals that are at highest risk of developing active TB.

The memory B cells response against Cut4 or CFP21 was also investigated in patients with LTB infection and in individuals uninfected by *Mtb*. Patients with active TB were not tested for memory B cells response because second blood sampling was not possible due to the rapid initiation of the therapy. *In vitro* polyclonal stimulation during a 5-day cell culture step induced the terminal differentiation of memory B cells into ASCs. Memory B cells specific to Cut4 and CFP21 were detected in subjects with a LTB infection whereas their corresponding serum antibodies were not detected. Memory B cells are remarkably long lived cells [37]. The presence of specific memory B cells against Cut4 and CFP21 provides evidence of a previous immune response against these antigens in LTB patients. Surprisingly, a memory B cells response against Cut4 and CFP21 was also observed in two *Mtb* uninfected individuals that were tested negative with the T-spot.® TB assay. This observation may be related to a prior *Mtb* infection followed by a spontaneous recovery. Memory B cell response against Cut4 may also result from past immunization with BCG vaccine CFP21 gene located in the RD2 region is deleted in most of BCG vaccine strains [50]. Since Cut4 and CFP21 amino acids sequences share 52% of identity and 66% of homology [25], the two proteins hold common epitopes and cross reaction may have occurred in BCG vaccinated subjects. Circulating memory B cells directed against tuberculin PPD were also detected in both LTB and *Mtb* uninfected subjects. Previous reports have shown that these cells remain detectable several years after BCG vaccine or anti-tuberculous treatment [51–52].

IgG Abs directed against Cut4 and CFP21 were assessed by ELISA. High levels of anti-Cut4 and CFP21 Abs were observed in some of the subjects with TB but the difference between Abs index in the TB group vs LTB or *Mtb* uninfected groups did not reach statistical significance. Previous reports have established that serum antibodies directed against CFP21 or Cut4 can be found in patients with active TB whereas low Abs titers were generally observed in LTB infected patients [8]. This discrepancy may be related to the small number of patients analyzed here and to the lower proportion of patients positive for *Mtb* in the sputum compared with the previous study. Indeed, we previously reported that smear positive individuals have highest levels of plasma anti-Cut4 and anti-CFP21 antibodies than smear negative subjects [8].

In conclusion, circulating B cells able to spontaneously generate specific antibodies directed against CFP21 and Cut4 were detected during active TB and in some LTB cases suggesting an ongoing exposure to these antigens. The possible roles of lipolytic enzymes in the physiology of *Mtb* dormancy and its reactivation, as well as their immunogenicity, highlight their possible usefulness as diagnostic and therapeutic targets.

Supporting information

S1 Table. Summary of results obtained with different tests. ‘.’: no test done. ‘+’: positive result for the corresponding test or done for the scan. ‘-’: negative result for the corresponding test. Status for TB: N: negative; L: latent TB, A: active TB. M: male; F: female. P: pulmonary TB; E-P: extra-pulmonary TB. Samples: f b: fresh blood; fz: frozen PBMCs; fz s: frozen serum. Without activation: #1 to # 69 included: population analyzed: Negative n = 38, Latent TB n = 17, Active TB n = 14.

With polyclonal B cells activation: # 70 to # 86 included: population analyzed: Negative n = 6, Latent TB n = 11.

Additional negative for ELISA assays: #87 to # 92 included: Negative: n = 6. A Lip B spot assay has been done on a fresh blood sample, PBMCs have been frozen prior to a polyclonal B cells activation and serum or plasma has been collected for ELISA analysis.

Nota bene: ELISA thresholds have been established by analyzing a larger series of sera coming from Montpellier hospital collections (i.e. 286 sera in total). These thresholds correspond to a

biological cut-off and correspond to the mean of the negative ratios (OD450nm negative sample / OD450nm blank), plus one standard deviation.
(DOCX)

S2 Table. ELISA results obtained with the different antigens. Results are express as index of the optical density (OD), corresponding to the ratio of sample OD450nm/blank OD450nm.
(DOCX)

Acknowledgments

We would like to thank Dr. Jean-Pierre Vendrell for all the enlightening conversations and for his advice.

Author Contributions

Conceptualization: Arnaud Bourdin, Pierre-Alain Rubbo, Laurent Kremer, Stéphane Canaan, Edouard Tuaille.

Data curation: Wendy Rénier, Edouard Tuaille.

Formal analysis: Wendy Rénier, Pierre-Alain Rubbo, Marianne Peries, Dominique Terru, Sylvain Godreuil, Edouard Tuaille.

Funding acquisition: Edouard Tuaille.

Investigation: Wendy Rénier, Pierre-Alain Rubbo, Luc Dedieu, Sophie Bendriss, Laurent Kremer, Stéphane Canaan, Dominique Terru, Edouard Tuaille.

Methodology: Marianne Peries, Luc Dedieu, Nicolas Nagot, Edouard Tuaille.

Project administration: Edouard Tuaille.

Resources: Philippe Van de Perre, Edouard Tuaille.

Supervision: Pierre-Alain Rubbo, Laurent Kremer, Stéphane Canaan, Sylvain Godreuil, Nicolas Nagot, Philippe Van de Perre, Edouard Tuaille.

Validation: Wendy Rénier, Pierre-Alain Rubbo, Philippe Van de Perre, Edouard Tuaille.

Visualization: Wendy Rénier.

Writing – original draft: Wendy Rénier, Pierre-Alain Rubbo, Philippe Van de Perre, Edouard Tuaille.

Writing – review & editing: Wendy Rénier, Arnaud Bourdin, Pierre-Alain Rubbo, Marianne Peries, Luc Dedieu, Sophie Bendriss, Laurent Kremer, Stéphane Canaan, Dominique Terru, Sylvain Godreuil, Nicolas Nagot, Philippe Van de Perre, Edouard Tuaille.

References

1. World-330 Health-Organization. Global Tuberculosis Report. 2017.
2. O'Garra A, Redford PS, McNab FW, Bloom CI, Wilkinson RJ, and Berry MP. The immune response in tuberculosis. *Annu Rev Immunol.* 2013; 31: 475–527. <https://doi.org/10.1146/annurev-immunol-032712-095939> PMID: 23516984
3. Pai M, Zwerling A, and Menzies D. Systematic review: T-cell-based assays for the diagnosis of latent tuberculosis infection: an update. *Ann Intern Med.* 2008; 149: 177–184. PMID: 18593687
4. Hinks TS, Varsani N, Godsiff DT, Bull TC, Nash KL, McLuckie L, et al. High background rates of positive tuberculosis-specific interferon-gamma release assays in a low prevalence region of UK: a surveillance study. *BMC Infect Dis.* 2012; 12: 339. <https://doi.org/10.1186/1471-2334-12-339> PMID: 23216965

5. Carrère-Kremer S, Rubbo PA, Pisoni A, Bendriss S, Marin G, Peries M, et al. High IFN- γ Release and Impaired Capacity of Multi-Cytokine Secretion in IGRA Supernatants Are Associated with Active Tuberculosis. *PLoS One*. 2016; 11(9): e0162137. <https://doi.org/10.1371/journal.pone.0162137> PMID: 27603919
6. Diel R, Loddenkemper R, and Nienhaus A. Evidence-based comparison of commercial interferon-gamma release assays for detecting active TB: a metaanalysis. *Chest*. 2010; 137: 952–968. <https://doi.org/10.1378/chest.09-2350> PMID: 20022968
7. Abubakar I, Stagg H R, Whitworth H, and Lalvani A. How should I interpret an interferon gamma release assay result for tuberculosis infection? *Thorax*. 2013; 68: 298–301. <https://doi.org/10.1136/thoraxjnl-2013-203247> PMID: 23400368
8. Steingart KR, Flores LL, Dendukuri N, Schiller I, Laal S, Ramsay A, et al. Commercial serological tests for the diagnosis of active pulmonary and extrapulmonary tuberculosis: an updated systematic review and meta-analysis. *PLoS Med*. 2011; 8: e1001062. <https://doi.org/10.1371/journal.pmed.1001062> PMID: 21857806
9. Maglione PJ, and Chan J. How B cells shape the immune response against *Mycobacterium tuberculosis*. *Eur J Immunol* 2009; 39: 676–686. <https://doi.org/10.1002/eji.200839148> PMID: 19283721
10. Kozakiewicz L, Phuah J, Flynn J, and Chan J. The role of B cells and humoral immunity in *Mycobacterium tuberculosis* infection. *Adv Exp Med Biol*. 2013; 783: 225–250. https://doi.org/10.1007/978-1-4614-6111-1_12 PMID: 23468112
11. Ulrichs T, Kosmiadi GA, Trusov V, Jorg S, Pradl L353, Titukhina M. et al. Human tuberculous granulomas induce peripheral lymphoid follicle-like structures to orchestrate local host defence in the lung. *J Pathol*. 2004; 204: 217–228. <https://doi.org/10.1002/path.1628> PMID: 15376257
12. Gonzalez-Juarrero M, Turner OC, Turner J, Marietta P, Brooks JV, and Orme IM. Temporal and spatial arrangement of lymphocytes within lung granulomas induced by aerosol infection with *Mycobacterium tuberculosis*. *Infect Immun*. 2001; 69: 1722–1728. <https://doi.org/10.1128/IAI.69.3.1722-1728.2001> PMID: 11179349
13. Lu LL, Chung AW, Rosebrock TR, Ghebremichael M, Yu WH, Grace PS et al. A functional role for antibodies in tuberculosis. *Cell* 2016; 167(2): 433–443. <https://doi.org/10.1016/j.cell.2016.08.072> PMID: 27667685
14. Zimmermann N, Thormann V, Hu B, Köhler AB, Imai-Matsushima A, Loch C et al. Human isotype-dependent inhibitory antibody responses against *Mycobacterium tuberculosis*. *EMBO Mol Med*. 2016; 8: 1325–39. <https://doi.org/10.15252/emmm.201606330> PMID: 27729388
15. Brust B, Lecoufle M, Tuaille E, Dedieu L, Canaan S, Valverde V, and Kremer L. *Mycobacterium tuberculosis* lipolytic enzymes as potential biomarkers for the diagnosis of active tuberculosis. *PLoS One*. 2011; 6:e25078. <https://doi.org/10.1371/journal.pone.0025078> PMID: 21966416
16. Mishra KC, de Chastellier C, Narayana Y, Bifani P, Brown AK, Besra GS, et al. Functional role of the PE domain and immunogenicity of the *Mycobacterium tuberculosis* triacylglycerol hydrolase LipY. *Infect Immun*. 2008; 76: 127–140. <https://doi.org/10.1128/IAI.00410-07> PMID: 17938218
17. Weldingh K, Andersen P. Immunological evaluation of novel *Mycobacterium tuberculosis* culture filtrate proteins. *FEMS Immunol Med Microbiol*. 1999; 23: 159–64. PMID: 10076913
18. Sable SB, Kumar R, Kalra M, Verma I, Khuller GK, Dobos K, et al. Peripheral blood and pleural fluid mononuclear cell responses to low-molecular-mass secretory polypeptides of *Mycobacterium tuberculosis* in human models of immunity to tuberculosis. *Infect Immun*. 2005; 73: 3547–58. <https://doi.org/10.1128/IAI.73.6.3547-3558.2005> PMID: 15908384
19. Wang BL, Xu Y, Li ZM, Xu YM, Weng XH, Wang HH. Antibody response to four secretory proteins from *Mycobacterium tuberculosis* and their complex antigen in TB patients. *Int J Tuberc Lung Dis*. 2005; 9: 1327–34. PMID: 16466054
20. Fu R, Wang C, Shi C, Lu M, Fang Z, Lu J, et al. An improved whole-blood gamma interferon assay based on the CFP21-MPT64 fusion protein. *Clin Vaccine Immunol*. 2009; 16: 686–91. <https://doi.org/10.1128/CVI.00486-08> PMID: 19279170
21. Wang C, Chen Z, Fu R, Zhang Y, Chen L, Huang L, et al. A DNA vaccine expressing CFP21 and MPT64 fusion protein enhances BCG-induced protective immunity against *Mycobacterium tuberculosis* infection in mice. *Med Microbiol Immunol*. 2011; 200: 165–75. <https://doi.org/10.1007/s00430-011-0188-z> PMID: 21340709
22. West NP, Chow FM, Randall EJ, Wu J, Chen J, Ribeiro JM, et al. Cutinase-like proteins of *Mycobacterium tuberculosis*: characterization of their variable enzymatic functions and active site identification. *Faseb J*. 2009; 23: 1694–1704. <https://doi.org/10.1096/fj.08-114421> PMID: 19225166
23. de Chastellier C. The many niches and strategies used by pathogenic mycobacteria for survival within host macrophages. *Immunobiology*. 2009; 214: 526–542. <https://doi.org/10.1016/j.imbio.2008.12.005> PMID: 19261352

24. Delorme V, Diomande SV, Dedieu L, Cavalier JF, Carriere F, Kremer L, et al. MmPPOX Inhibits Mycobacterium tuberculosis Lipolytic Enzymes Belonging to the Hormone-Sensitive Lipase Family and Alters Mycobacterial Growth. *PLoS One*. 2012; 7: e46493. <https://doi.org/10.1371/journal.pone.0046493> PMID: 23029536
25. Dedieu L, Serveau-Avesque C, Kremer L, and Canaan S. 378 Mycobacterial lipolytic enzymes: a gold mine for tuberculosis research. *Biochimie*. 2013; 95: 66–73. <https://doi.org/10.1016/j.biochi.2012.07.008> PMID: 22819994
26. Kapoor N, Pawar S, Sirakova T D, Deb C, Warren WL, and Kolattukudy PE. Human Granuloma In Vitro Model, for TB Dormancy and Resuscitation. *PLoS One*. 2013; 8: e53657. <https://doi.org/10.1371/journal.pone.0053657> PMID: 23308269
27. Tsai MC, Chakravarty S, Zhu G, Xu J, Tanaka K, Koch C, et al. Characterization of the tuberculous granuloma in murine and human lungs: cellular composition and relative tissue oxygen tension. *Cell Microbiol*. 2006; 8: 218–232. <https://doi.org/10.1111/j.1462-5822.2005.00612.x> PMID: 16441433
28. Peyron P, Vaubourgeix J, Poquet Y, Levillain F, Botanch C, Bardou F, et al. Foamy macrophages from tuberculous patients' granulomas constitute a nutrient-rich reservoir for *M. tuberculosis* persistence. *PLoS Pathog*. 2008; 4: e1000204. <https://doi.org/10.1371/journal.ppat.1000204> PMID: 19002241
29. Daniel J, Maamar H, Deb C, Sirakova TD, and Kolattukudy PE. Mycobacterium tuberculosis uses host triacylglycerol to accumulate lipid droplets and acquires a dormancy-like phenotype in lipid-loaded macrophages. *PLoS Pathog*. 2011; 7: e1002093. <https://doi.org/10.1371/journal.ppat.1002093> PMID: 21731490
30. Caire-Brandli I, Papadopoulos A, Malaga W, Marais D, Canaan S, Thilo L., et al. Reversible Lipid Accumulation and Associated Division Arrest of Mycobacterium avium in Lipoprotein-Induced Foamy Macrophages May Resemble Key Events during Latency and Reactivation of Tuberculosis. *Infect Immun*. 2014. 82: 476–490. <https://doi.org/10.1128/IAI.01196-13> PMID: 24478064
31. Schue M, Maurin D, Dhoub R, Bakala N'Goma JC, Delorme V, Lambeau G, et al. Two cutinase-like proteins secreted by Mycobacterium tuberculosis show very different lipolytic activities reflecting their physiological function. *Faseb J*. 2010; 24: 1893–1903. <https://doi.org/10.1096/fj.09-144766> PMID: 20103719
32. Vendrell JP. Peripheral Blood Naive and Memory B Cells. *Measuring Immunity: Basic Science and Clinical Practice*. Academic Press. 2004; 277–292. ISBN: 9780080479330.
33. Jourdan M, Caraux A, Caron G, Robert N, Fiol G, Reme T, et al. Characterization of a transitional pre-plasmablast population in the process of human B cell to plasma cell differentiation. *J Immunol*. 2011; 187: 3931–3941. <https://doi.org/10.4049/jimmunol.1101230> PMID: 21918187
34. Fournier AM, Baillat V, Alix-Panabieres C, Fondere JM, 403 Merle C, Segondy M, et al. 2002. Dynamics of spontaneous HIV-1 specific and non-specific B-cell responses in patients receiving antiretroviral therapy. *AIDS* 16: 1755–1760. PMID: 12218386
35. Lee FE, Falsey AR, Halliley JL, Sanz I, and Walsh EE. Circulating antibody-secreting cells during acute respiratory syncytial virus infection in adults. *J Infect Dis*. 2010; 202: 1659–1666. <https://doi.org/10.1086/657158> PMID: 20979459
36. Tuaille E, Valea D, Becquart P, Al Tabaa Y, Meda N, Bollore K, et al. Human milk derived B cells: a highly activated switched memory cell population primed to secrete antibodies. *J Immunol*. 2009; 182: 7155–7162. <https://doi.org/10.4049/jimmunol.0803107> PMID: 19454712
37. Amanna IJ, Carlson NE, and Slifka MK. Duration of humoral immunity to common viral and vaccine antigens. *N Engl J Med*. 2007; 357: 1903–1915. <https://doi.org/10.1056/NEJMoa066092> PMID: 17989383
38. Maglione PJ, Xu J, and Chan J. B cells moderate inflammatory progression and enhance bacterial containment upon pulmonary challenge with Mycobacterium tuberculosis. *J Immunol*. 2007; 178: 7222–7234. PMID: 17513771
39. Kahnert A, Hopken UE, Stein M, Bandermann S, Lipp M, and Kaufmann SH. Mycobacterium tuberculosis triggers formation of lymphoid structure in murine lungs. *J Infect Dis*. 2007; 195: 46–54. <https://doi.org/10.1086/508894> PMID: 17152008
40. Phuah JY, Mattila JT, Lin PL, Flynn JL. Activated B cells in the granulomas of nonhuman primates infected with Mycobacterium tuberculosis. *Am J Pathol*. 2012; 181: 508–514. <https://doi.org/10.1016/j.ajpath.2012.05.009> PMID: 22721647
41. Sebina I, Biraro IA, Dockrell HM, Elliott AM, Cose S. Circulating B-lymphocytes as potential biomarkers of tuberculosis infection activity. *PLoS One*. 2014; 5(9): e106796.
42. Sousa AO, Wargnier A, Poinsignon Y, Simonney N, Gerber F, Lavergne F, et al. Kinetics of circulating antibodies, immune complex and specific antibody-secreting cells in tuberculosis patients during 6 months of antimicrobial therapy. *Tuber Lung Dis*. 2000; 80:27–33. PMID: 10897381

43. Raqib R, Mondal D, Karim MA, Chowdhury F, Ahmed S, 426 Luby S, et al. Detection of antibodies secreted from circulating Mycobacterium tuberculosis-specific plasma cells in the diagnosis of pediatric tuberculosis. *Clin Vaccine Immunol*. 2009; 16: 521–527. <https://doi.org/10.1128/CVI.00391-08> PMID: [19193833](https://pubmed.ncbi.nlm.nih.gov/19193833/)
44. Mahairas GG, Sabo PJ, Hickey MJ, Singh DC, and Stover CK. Molecular analysis of genetic differences between Mycobacterium bovis BCG and virulent M. bovis. *J Bacteriol*. 1996; 178: 1274–1282. PMID: [8631702](https://pubmed.ncbi.nlm.nih.gov/8631702/)
45. Manz RA, Thiel A, and Radbruch A. Lifetime of plasma cells in the bone marrow. *Nature*. 1997; 388: 133–134. <https://doi.org/10.1038/40540> PMID: [9217150](https://pubmed.ncbi.nlm.nih.gov/9217150/)
46. Garton NJ, Christensen H, Minnikin DE, Adegbola RA, and Barer MR. Intracellular lipophilic inclusions of mycobacteria in vitro and in sputum. *Microbiology*. 2002; 148: 2951–2958. <https://doi.org/10.1099/00221287-148-10-2951> PMID: [12368428](https://pubmed.ncbi.nlm.nih.gov/12368428/)
47. Neyrolles O, Hernandez-Pando R, Pietri-Rouxel F, Fornes P, Tailleux L, Barrios JA, et al. Is adipose tissue a place for Mycobacterium tuberculosis persistence? *PLoS One*. 2006. 1:e43. <https://doi.org/10.1371/journal.pone.0000043> PMID: [17183672](https://pubmed.ncbi.nlm.nih.gov/17183672/)
48. Vynnycky E, and Fine PE. Lifetime risks, incubation period, and serial interval of tuberculosis. *Am J Epidemiol*. 2000; 152: 247–263. PMID: [10933272](https://pubmed.ncbi.nlm.nih.gov/10933272/)
49. Horsburgh CR Jr. Priorities for the treatment of latent tuberculosis infection in the United States. *N Engl J Med*. 2004; 350:2060–2067. <https://doi.org/10.1056/NEJMsa031667> PMID: [15141044](https://pubmed.ncbi.nlm.nih.gov/15141044/)
50. Orduña P, Cevallos MA, de León SP, Arvizu A, Hernández-González IL, Mendoza-Hernández G, López-Vidal Y. Genomic and proteomic analyses of Mycobacterium bovis BCG Mexico 1931 reveal a diverse immunogenic repertoire against tuberculosis infection. *BMC Genomics*. 2011; 8: 12: 493. <https://doi.org/10.1186/1471-2164-12-493> PMID: [21981907](https://pubmed.ncbi.nlm.nih.gov/21981907/)
51. Yang Y, Kulka K, Montelaro RC, Reinhart TA, Sissons J, Aderem A, et al. A Hydrolase of Trehalose Dimycolate Induces Nutrient Influx and Stress Sensitivity to Balance Intracellular Growth of Mycobacterium tuberculosis. *Cell Host Microbe*. 2014; 15:153–163. <https://doi.org/10.1016/j.chom.2014.01.008> PMID: [24528862](https://pubmed.ncbi.nlm.nih.gov/24528862/)
52. Sebina I, Cliff JM, Smith SG, Nogaro S, Webb EL, Riley EM450, Dockrell H. M., Elliott A. M., Hafalla J. C., and Cose S. Long-Lived Memory B-Cell Responses following BCG Vaccination. *PLoS One*. 2012; 7: e51381. <https://doi.org/10.1371/journal.pone.0051381> PMID: [23240017](https://pubmed.ncbi.nlm.nih.gov/23240017/)